

COMPARK VILLAGE SOUTH
F1 AMD 2 - MULTIFAMILY
SITE PLAN

LOT 1, COMPARK VILLAGE FILING NO. 1, AMEND NO. 2
SOUTH HALF SECTION 6, TOWNSHIP 6 SOUTH, RANGE 66 WEST OF THE 6TH PRINCIPAL MERIDIAN
TOWN OF PARKER, COUNTY OF DOUGLAS, STATE OF COLORADO

PROJECT NUMBER
65120950

DRAWN BY
TV

DATE
09/06/2022



MODEL: MONOLINE BACKED BENCH
SKU: ML-BENCH-72
SIZE: 72"X27"X38.5"
COLOR: RIVER ROCK
ATTACHMENT: SURFACE MOUNT

NOTE:
INSTALL PER MANUFACTURER'S SPECS

SUPPLIER: SITE PIECES
WEBSITE: SITEPIECES.COM



MODEL: CONTEMPO ROUND FIRE TABLE, 12" STAR BURNER OR APPROVED EQUAL

ITEM #: 782-BA-11-M2NC
MANUFACTURER: AMERICAN FIRE DESIGNS
SIZE: 47"DIA, 15.5"H
COLOR: BLACK LAVA
FUEL: PROPANE

NOTE:
• INSTALL PER MANUFACTURER'S SPECS
• CONTRACTOR TO PROVIDE AUTOMATIC SHUT OFF TIMER

SUPPLIER: STAR FIRE DIRECT
WEBSITE: STARFIREDIRECT.COM



MODEL: MONOLINE CAROUSEL TABLE

SKU: ML-CT
COLOR: RIVER ROCK
ATTACHMENT: SURFACE MOUNT

NOTE:
INSTALL PER MANUFACTURER'S SPECS.

SUPPLIER: SITE PIECES
WEBSITE: SITEPIECES.COM

1 BENCH
Scale: NTS

2 FIRE PIT
Scale: NTS

3 TABLES AND CHAIRS
Scale: NTS



MODEL: AVIANA PLASTIC RESIN ADIRONDACK CHAIR OR APPROVED EQUAL

COLOR: BLACK

NOTE:
INSTALL PER MANUFACTURER'S SPECS.

SUPPLIER: ALL MODERN
WEBSITE: ALLMODERN.COM



MODEL: STANDARD PARK GRILL OR APPROVED EQUAL

ITEM #: 100PRG
SIZE: 10"H x 20"W x 15"D

NOTE:
INSTALL PER MANUFACTURER'S SPECS.

SUPPLIER: ANOVA
WEBSITE: ANOVA.COM



MODEL: MONOLINE STANDARD OR APPROVED EQUAL

MATERIAL: POWDER COATED METAL
COLOR: RIVER ROCK
ATTACHMENT: SURFACE MOUNT

NOTE:
INSTALL PER MANUFACTURER'S SPECS

SUPPLIER: SITE PIECES
WEBSITE: SITEPIECES.COM

4 ADIRONDACK CHAIR
Scale: NTS

5 GRILL
Scale: NTS

6 BIKE RACK
Scale: NTS



MODEL: OUTDOOR DIAMOND STEEL TRASH CAN WITH FLAT LID, 36 GALLON

ITEM #: T9F261924BK
SIZE: 30"H x 23-1/2" W.
COLOR: BLACK
ATTACHMENT: SURFACE MOUNT

NOTE:
INSTALL PER MANUFACTURER'S SPECS.

SUPPLIER: GLOBAL INDUSTRIAL
WEBSITE: GLOBALINDUSTRIAL.COM



COMMERCIAL GRADE SUSPENDED E26

MODEL: LS-MS-24-100-BK
WATTAGE: 25W PER SOCKET

NOTE:
• INSTALL PER MANUFACTURER'S SPECS.
• ELECTRICAL GFI CONNECTION TO BE PROVIDED BY ELECTRICAL

SUPPLIER: AMERICAN LIGHTING
WEBSITE: AMERICANLIGHTING.COM



MODEL: 7408-R, COMPLETE DOG WASTE STATION WITH ROLL DISPENSER OR APPROVED EQUAL

COLOR: GREEN

NOTE:
INSTALL PER MANUFACTURER'S SPECS

CONTACT: ATOZ RECREATION
PHONE: 303.670.3789
WEB: WWW.ATOZRECREATION.COM

7 RECEPTACLE
Scale: NTS

8 FESTOON LIGHTS
Scale: NTS

9 PET WASTE STATION
Scale: NTS

MERRICK
Engineering | Architecture | Design-Build | Surveying |
Planning | Geospatial Solutions
5970 GREENWOOD PLAZA BLVD.
GREENWOOD VILLAGE, CO. 80111
303-751-0741
www.merrick.com

PREPARED FOR CENTURY COMMUNITIES

CENTURY
— LIVING —

PROJECT

COMPARK VILLAGE SOUTH

TOWN OF PARKER, COUNTY OF DOUGLAS, COLORADO 80134

SHEET TITLE

SITE DETAILS

SHEET NUMBER

33

**COMPARK VILLAGE SOUTH
F1 AMD 2 - MULTIFAMILY
SITE PLAN**

LOT 1, COMPARK VILLAGE FILING NO. 1, AMEND NO. 2
SOUTH HALF SECTION 6, TOWNSHIP 6 SOUTH, RANGE 66 WEST OF THE 6TH PRINCIPAL MERIDIAN
TOWN OF PARKER, COUNTY OF DOUGLAS, STATE OF COLORADO



MODEL: SUSPENSION TRAINER
ITEM #: FAZ10101
SIZE: 12'10"L x 3'6"W x 10'11"H
COLOR: ORANGE
NOTE:
INSTALL PER MANUFACTURER'S SPECS.
SUPPLIER: KOMPAN
WEBSITE: KOMPAN.US

1 **OUTDOOR FITNESS EQUIPMENT**
Scale: NTS



DUAL SLOPE SHELTER WITH STANDING SEAM ROOF PANELS OR APPROVED EQUAL
SIZE: 16'X16'
ROOF COLOR: POWER COAT, BASALT GRAY
NOTE:
• INSTALL PER MANUFACTURER'S SPECS.
• MANUFACTURER TO PROVIDE PROPER DETAILING AND STRUCTURAL INFORMATION
SUPPLIER: ICON SHELTERS
WEBSITE: ICONSHELTERS.COM

2 **SHELTER**
Scale: NTS



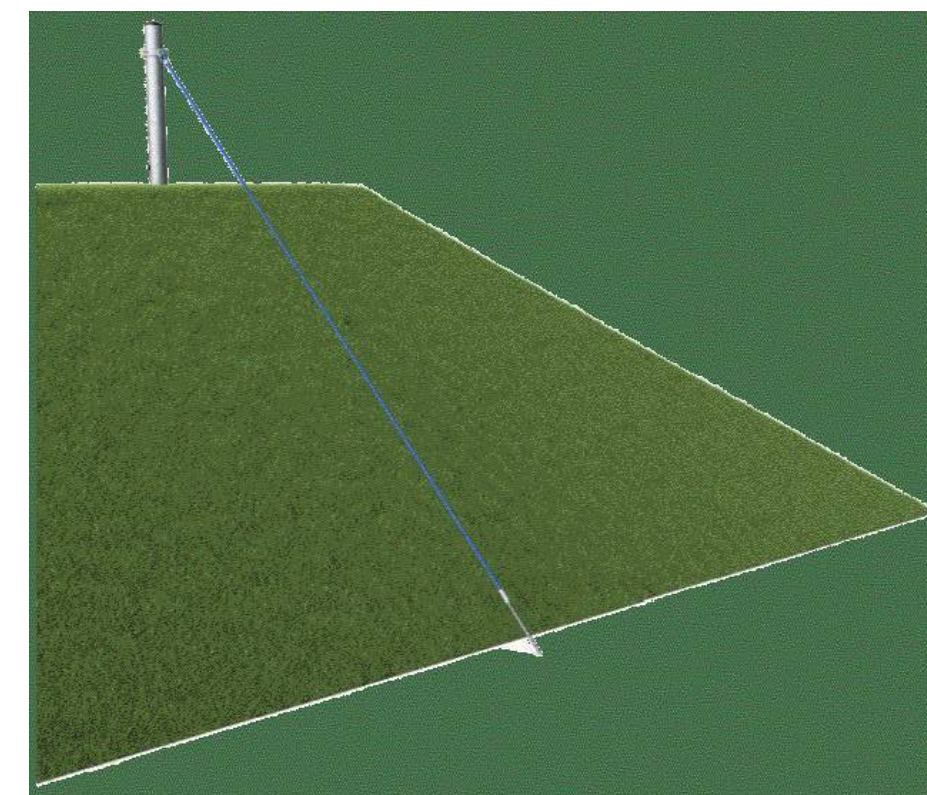
ITEM: S BALANCE BEAM OR APPROVED EQUAL
COLOR: BLUE
NOTE:
INSTALL PER MANUFACTURER'S SPECS
SUPPLIER: BURKE
WEBSITE: BCIBURKE.COM

3 **BALANCE BEAM**
Scale: NTS



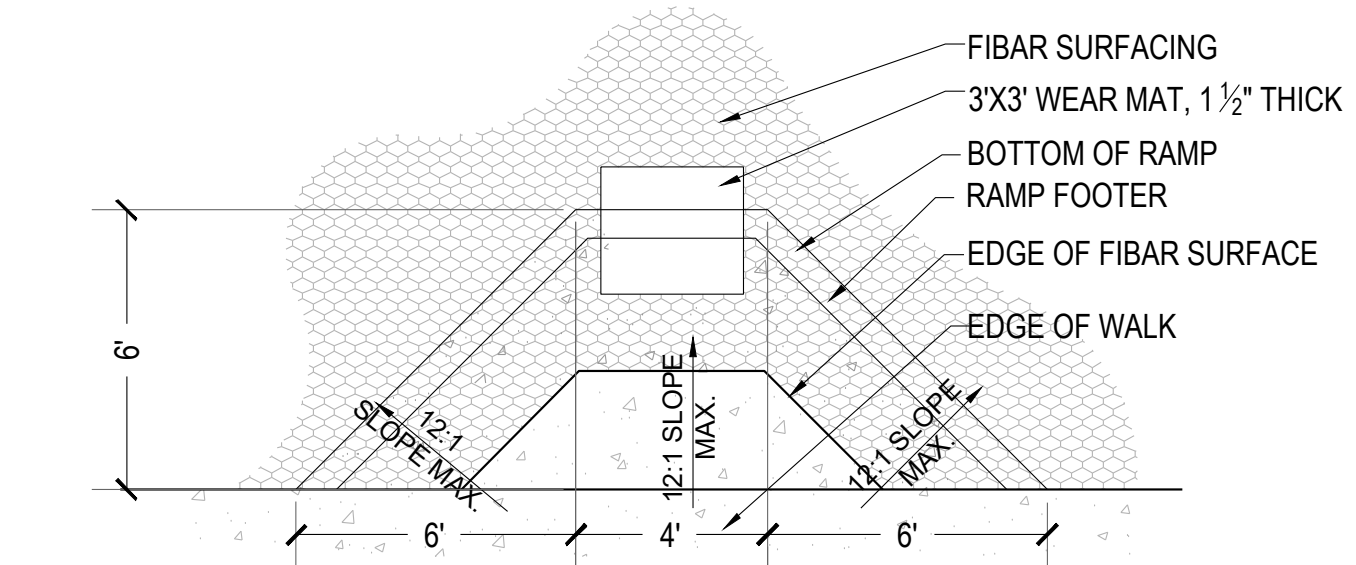
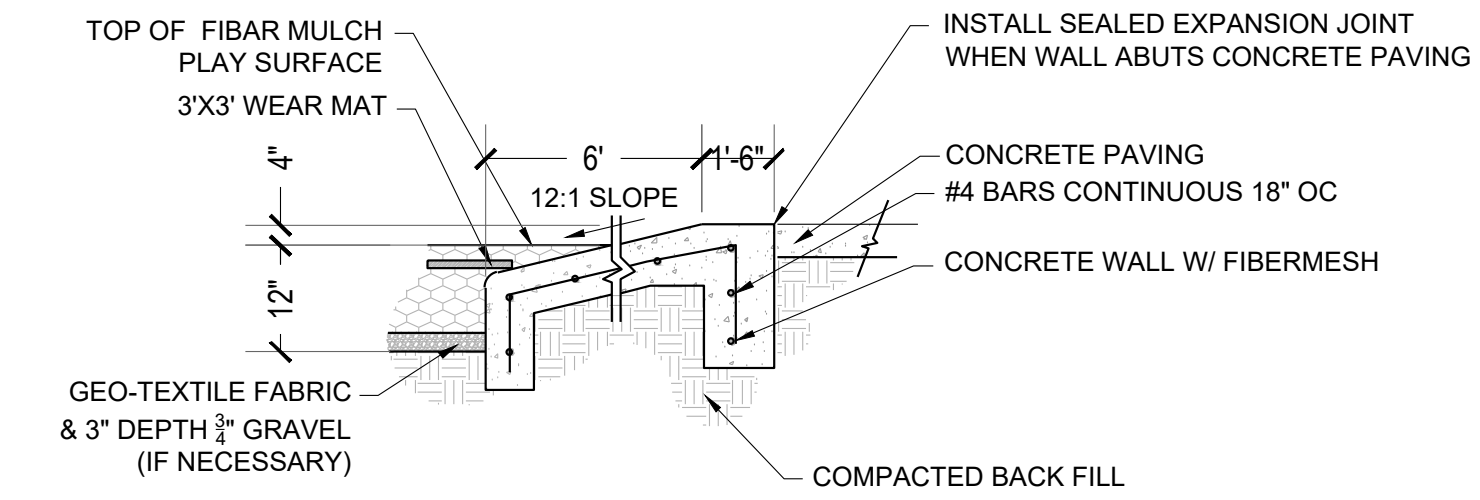
ITEM: EMBANKMENT SLIDE OR APPROVED EQUAL
SLIDE SIZE: 15' 2" x 5' 3" x 3' 7"
MATERIAL: PLASTIC
COLOR: LIME
NOTE:
INSTALL PER MANUFACTURER'S SPECS
SUPPLIER: KOMPAN
WEBSITE: KOMPAN.US

4 **EMBANKMENT SLIDE**
Scale: NTS

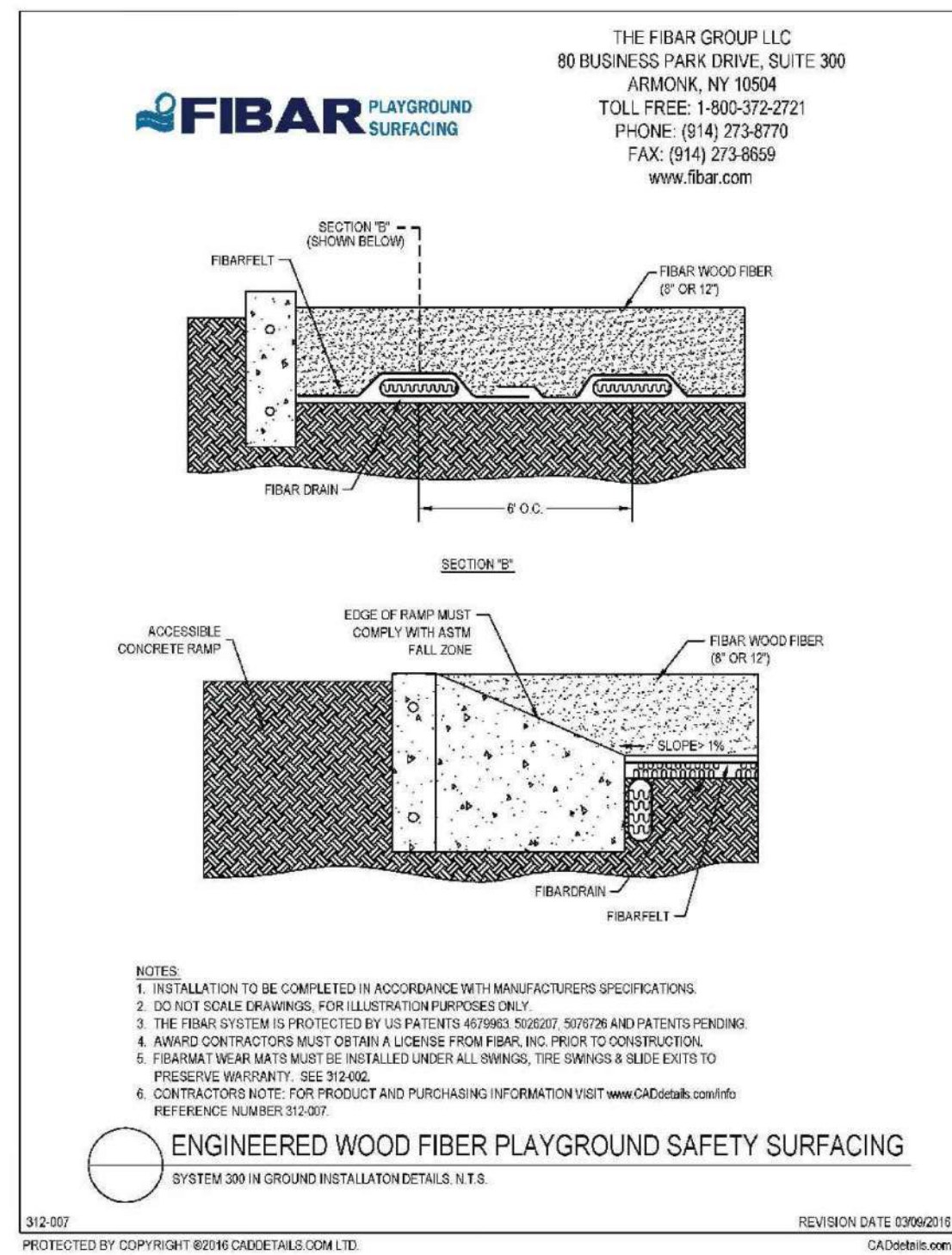


ITEM: HILL CLIMBER ROPE, TYPE 6 OR APPROVED EQUAL
SLIDE SIZE: 16' 8" x 0' 9" x 13' 9"
COLOR: LIGHT BLUE
NOTE:
INSTALL PER MANUFACTURER'S SPECS
SUPPLIER: KOMPAN
WEBSITE: KOMPAN.US

5 **ROPE CLIMBER**
Scale: NTS

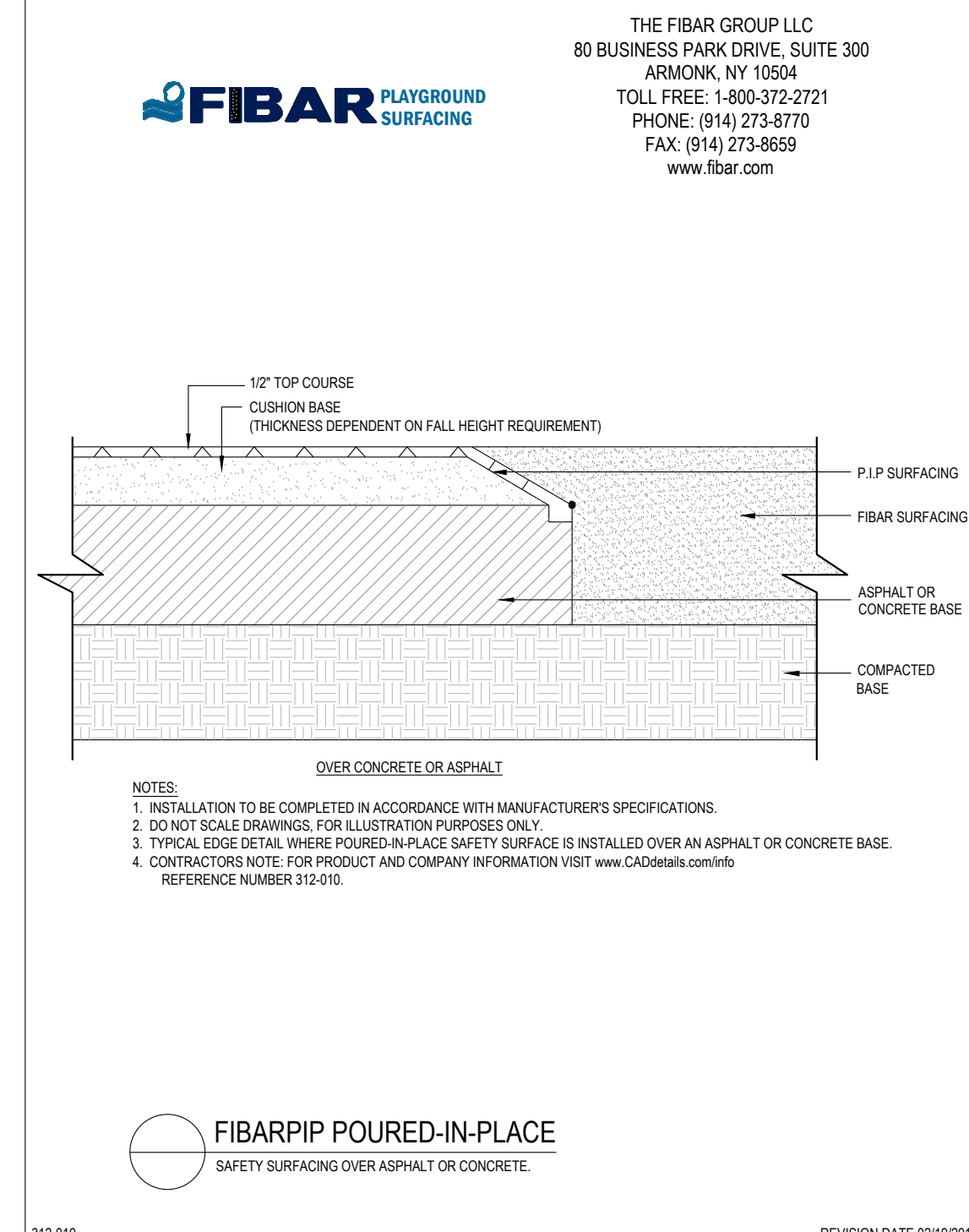


6 **ADA PLAYGROUND RAMP**
Scale: NTS



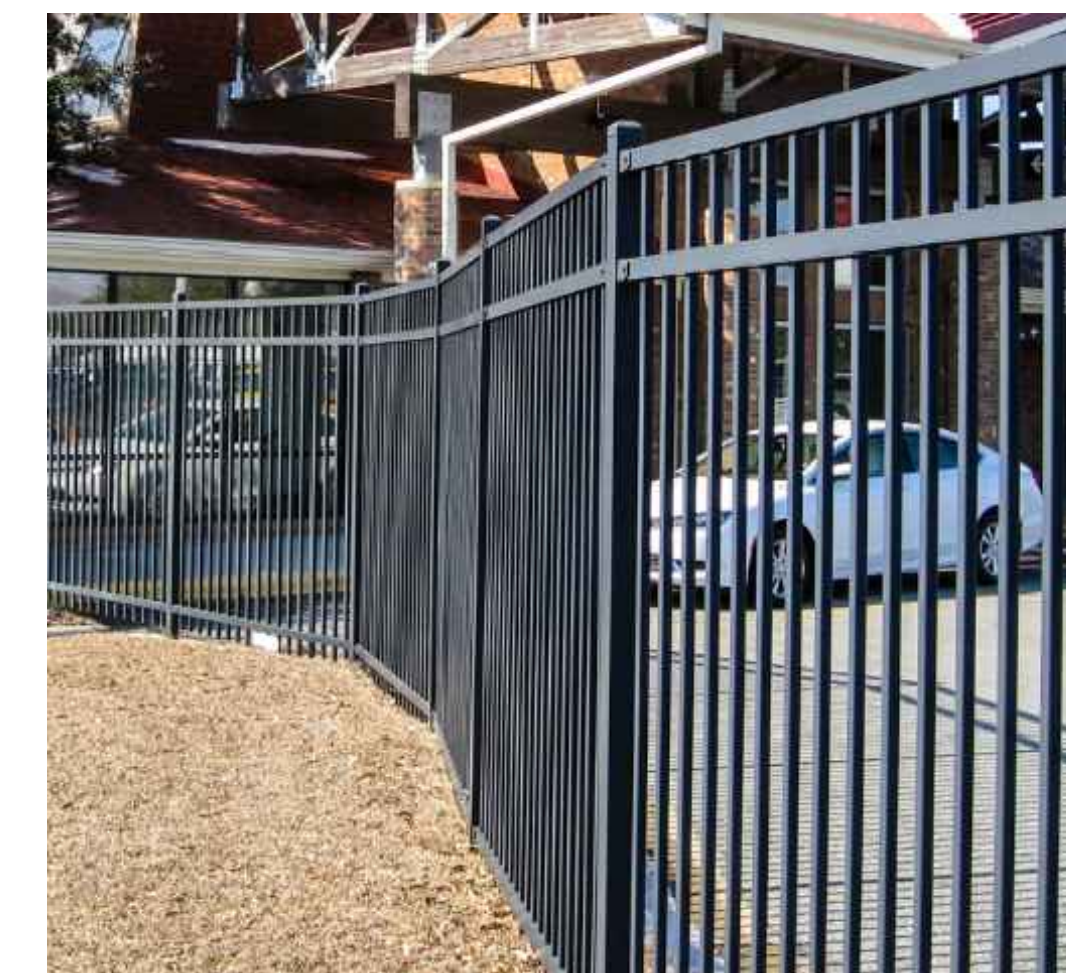
FIBAR 100 SURFACING OR APPROVED EQUAL
NOTE:
INSTALL PER MANUFACTURER'S SPECS.
SUPPLIER: RECREATION PLUS
WEBSITE: RECREATIONPLUS.COM

7 **FIBAR SURFACING**
Scale: NTS



POURED IN PLACE RUBBER PLAYGROUND SURFACE OR APPROVED EQUAL
COLOR: GREEN 067
NOTE:
INSTALL PER MANUFACTURER'S SPECS.
SUPPLIER: RECREATION PLUS
WEBSITE: RECREATIONPLUS.COM

8 **P.I.P. SURFACING**
Scale: NTS



MODEL: ECHELON II OR APPROVED EQUAL
STYLE: MAJESTIC
HEIGHT: 4'-0" MIN.
COLOR: BLACK
NOTE:
• INSTALL PER MANUFACTURER'S INSTRUCTIONS
• STRUCTURAL ENGINEER TO PROVIDE STRUCTURAL DETAILING AND TO STAMP DRAWINGS.
• SEE CIVIL DRAWINGS FOR INFORMATION ON SLEEVE IT SYSTEM FOR INSTALLATION OF FENCE ON TOP OF RETAINING WALL.
SUPPLIER: AMERISTAR
WEBSITE: AMERISTARPERIMETER.COM

9 **PLAYGROUND FENCE**
Scale: NTS

PROJECT NUMBER
65120950
DRAWN BY
TV
DATE
09/06/2022



PREPARED FOR CENTURY COMMUNITIES



PROJECT

COMPARK VILLAGE SOUTH

TOWN OF PARKER, COUNTY OF DOUGLAS, COLORADO 80134

SHEET TITLE

SITE DETAILS

SHEET NUMBER

COMPARK VILLAGE SOUTH
F1 AMD 2 - MULTIFAMILY
SITE PLAN

LOT 1, COMPARK VILLAGE FILING NO. 1, AMEND NO. 2
SOUTH HALF SECTION 6, TOWNSHIP 6 SOUTH, RANGE 66 WEST OF THE 6TH PRINCIPAL MERIDIAN
TOWN OF PARKER, COUNTY OF DOUGLAS, STATE OF COLORADO



ML4: 4" PRO BEACH NET
SIZE: 39"H X 30"W
NET COLOR: WHITE
OPTIONS: STANDARD TOP & BOTTOM LINES, STANDARD SIDE TENSION
NOTE: INSTALL PER MANUFACTURER'S SPECS.
SUPPLIER: VOLLEYBALL USA
WEBSITE: VOLLEYBALLUSA.COM



UV-5000 OUTDOOR ALUMINUM POLES OR APPROVED EQUAL
SIZE: 10'6"H
NOTE: INSTALL PER MANUFACTURER'S SPECS.
SUPPLIER: VOLLEYBALL USA
WEBSITE: VOLLEYBALLUSA.COM



RUBBER VOLLEYBALL CURB OR APPROVED EQUAL
SIZE: 6"W X 6"H X 72"L SECTIONS
TOTAL LF: 148'
MATERIAL: RUBBER
COLOR: BLACK
NOTE: INSTALL PER MANUFACTURER'S SPECS.
SUPPLIER: VOLLEYBALL USA
WEBSITE: VOLLEYBALLUSA.COM

1 VOLLYBALL NETS
Scale: NTS

2 VOLLYBALL POLLS
Scale: NTS

3 VOLLYBALL RUBBER CURB
Scale: NTS



2 INCH PRO ADJUSTABLE BOUNDARY LINES OR APPROVED EQUAL
COLOR: BLACK
NOTE: INSTALL PER MANUFACTURER'S SPECS
SUPPLIER: VOLLEYBALL USA
WEBSITE: VOLLEYBALLUSA.COM



CUSTOM SIGN PLAQUE
COLOR: ALUMINUM EDGE
STAND: 4X4 CEDAR POST
NOTES: SIGN PLAQUE DESIGN, ILLUSTRATIVE/ INFORMATION AND MATERIALS TO BE COMPLETED BY OTHERS



MODEL: KEYSTONE COMPAC OR APPROVED EQUAL
STYLE: REGENCY
COLOR: BROWN
NOTE:
• INSTALL PER MANUFACTURER'S INSTRUCTIONS
• STRUCTURAL ENGINEER TO PROVIDE STRUCTURAL DETAILING AND TO STAMP DRAWINGS.
• SEE CIVIL DRAWINGS FOR INFORMATION ON RAILING AND SLEEVE IT RAILING SYSTEM
SUPPLIER: KEYSTONE
WEBSITE: KEYSTONEWALLS.COM

4 VOLLYBALL BOUNDARIES
Scale: NTS

5 SIGN PLAQUE
Scale: NTS

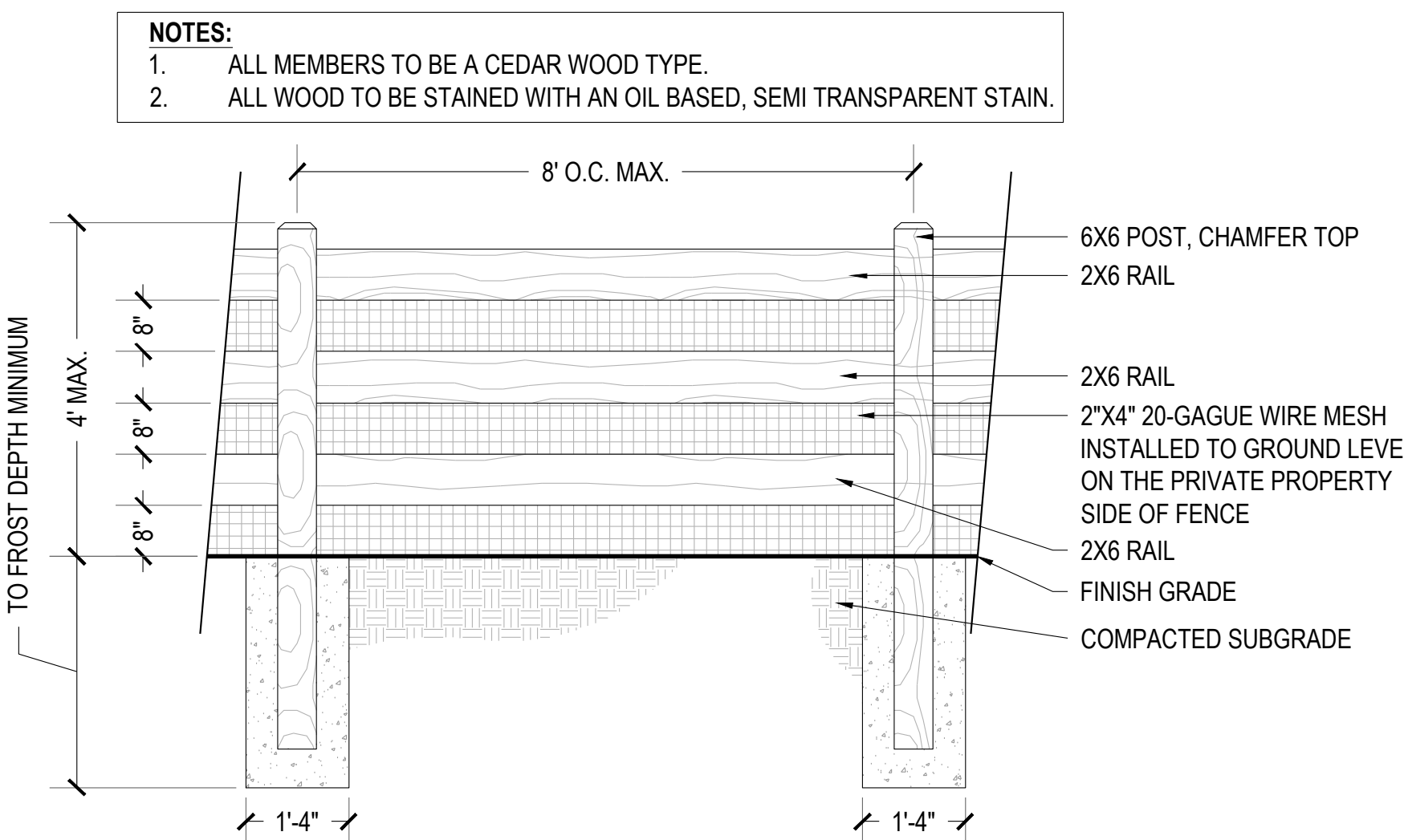
6 RETAINING WALL
Scale: NTS



DECORATIVE CONCRETE
COLOR: TBD
SAW CUT JOINTS
INSTALL PER MANUFACTURER'S SPECS. OR APPROVED EQUAL.



CUSTOM MONUMENT SIGN MATERIALS TO MATCH ARCHITECTURE
***MONUMENT IMAGES ARE FOR CONCEPTUAL REFERENCE ONLY. MONUMENT SIGN TO BE APPROVED THROUGH SEPARATE SIGN SUBMITTAL PROCESS. SHOP DRAWINGS TO BE SUBMITTED BY CONTRACTOR FOR CONSTRUCTION. COMMUNITY NAME IS CONCEPTUAL AND HAS NOT BEEN DETERMINED AT THIS POINT IN TIME.**



7 DECORATIVE PAVING
Scale: NTS

8 MONUMENT SIGN
Scale: NTS

9 3-RAIL FENCE
Scale: NTS

PROJECT NUMBER
65120950
DRAWN BY
TV
DATE
09/06/2022

MERRICK
Engineering | Architecture | Design-Build | Surveying |
Planning | Geospatial Solutions
5970 GREENWOOD PLAZA BLVD.
GREENWOOD VILLAGE, CO. 80111
303-751-0741
www.merrick.com

PREPARED FOR CENTURY COMMUNITIES

CENTURY LIVING

PROJECT

COMPARK VILLAGE SOUTH

TOWN OF PARKER, COUNTY OF DOUGLAS, COLORADO 80134

SHEET TITLE

SITE DETAILS

SHEET NUMBER

35

COMPARK VILLAGE SOUTH
F1 AMD 2 - MULTIFAMILY
SITE PLAN

LOT 1, COMPARK VILLAGE FILING NO. 1, AMEND NO. 2
SOUTH HALF SECTION 6, TOWNSHIP 6 SOUTH, RANGE 66 WEST OF THE 6TH PRINCIPAL MERIDIAN
TOWN OF PARKER, COUNTY OF DOUGLAS, STATE OF COLORADO

PROJECT NUMBER
210512

DRAWN BY

DATE
09/06/2022



Architecture + Planning
820 16th Street, Suite 500
Denver, CO 80202
303.825.6400
ktgy.com



PREPARED FOR CENTURY
COMMUNITIES



PROJECT

COMPARK
VILLAGE
SOUTH

TOWN OF PARKER, COUNTY
OF DOUGLAS, COLORADO
80134

SHEET TITLE
COVER
SHEET

SHEET NUMBER
36

ARCHITECTURAL EXHIBITS

COMPARK VILLAGE SOUTH
F1 AMD 2 - MULTIFAMILY
SITE PLAN
LOT 1, COMPARK VILLAGE FILING NO. 1, AMEND NO. 2
SOUTH HALF SECTION 6, TOWNSHIP 6 SOUTH, RANGE 66 WEST OF THE 6TH PRINCIPAL MERIDIAN
TOWN OF PARKER, COUNTY OF DOUGLAS, STATE OF COLORADO

Building Type A - 24 Plex							
Unit Type	Units per level	Units per bldg	Bedrooms	*NRSF area	No. of bldg	Total units	Total area
P0-1/1A	1	3	1	540		6	3240
P1-2/1D	1	3	1	800		6	4800
P1-3/1E	1	3	1	735		6	4410
P2-1/2B	1	3	2	1060		6	6360
P2-3/2D	(Level 1)	1	2	1125		2	2250
P2-4/2F	2	6	2	1125		12	13500
P3-0/3A	(Level 1)	1	3	1300		10	13000
	(Level 2/3)	2					
Total	8	24			2	48	47,560

Building Type B - 36 Plex							
Unit Type	Units per level	Units per bldg	Bedrooms	*NRSF area	No. of bldg	Total units	Total area
P1-2/1D	1	3	1	800		6	4800
P1-3/1E	3	9	1	735		18	13230
P1-5/1G	1	3	1	980		6	5880
P1-7/1J	1	3	1	790		6	4740
P1-8/1K	(Level 1)	1	1	750		2	1500
P2-0/2A	1	3	2	1050		6	6300
P2-1/2B	(Level 1)	3	2	1060		22	23320
	(Level 2/3)	4					
P2-4/2F	1	3	2	1125		6	6750
Total	8	36			2	72	66,520

Building Type C - 24 Plex							
Unit Type	Units per level	Units per bldg	Bedrooms	*NRSF area	No. of bldg	Total units	Total area
P0-1/1A	1	3	1	540		9	4860
P1-0/1B	1	3	1	790		9	7110
P1-2/1D	1	3	1	800		9	7200
P1-3/1E	2	6	1	735		18	13230
P2-1/2B	1	3	2	1060		9	9540
P2-2/2C	1	3	2	1225		9	11025
P2-7/2J	(Level 1)	1	2	1220		3	3660
P3-1/3B	(Level 2/3)	1	3	1380		6	8280
Total	8	24			3	72	64,905

Building Type D - 36 Plex with mezzanine in center							
Unit Type	Units per level	Units per bldg	Bedrooms	*NRSF area	No. of bldg	Total units	Total area
P1-1/1C	1	3	1	830		9	7470
P1-2/1D	2	6	1	800		18	14400
P1-3/1E	1	3	1	735		9	6615
P1-4/1F	(Level 1/2)	2	4	870		12	10440
P1-6/1H	1	3	1	810		9	7290
P1-9/1L	(Level 3)	2	2	1170		6	7020
P2-0/2A	1	3	2	1050		9	9450
P2-1/2B	1	3	2	1060		9	9540
P2-5/2G	(Level 1/2)	2	2	1085		6	6510
P2-6/2H	(Level 3)	2	1	2 + Den		3	4275
P2-7/2J	(Level 1)	1	4	1220		12	14640
P3-1/3B	(Level 2/3)	1	2	1380		6	8280
Total	12	36			3	108	83,010

*NRSF = Net rentable square footage: To outside face of stud + 1" air gap; does not include balcony

Site Summary	
**Net Site Area	± 9.74 AC
Dwelling Units	300 DU
Net Density	31 DU/AC

**Net Site Area = Lot 1 area only, does not include Tract 1 + 2.

Plan Summary						
Plan	Beds	*NRSF area	Quantity	%	Total NRSF	Avg. NRSF
P0-1/1A	1	550	15	5.0%		
P1-0/1B	1	790	9	3.0%		
P1-1/1C	1	830	9	3.0%		
P1-2/1D	1	830	39	13.0%		
P1-3/1E	1	730	51	17.0%		
P1-4/1F	1	880	12	4.0%		
P1-5/1G	1	980	6	2.0%		
P1-6/1H	1	810	9	3.0%		
P1-7/1J	1	780	6	2.0%		
P1-8/1K	1+Den	770	2	0.7%		
P1-9/1L	1+Mezz	1195	6	2.0%		
P2-0/2A	2	1050	15	5.0%		
P2-1/2B	2	1080	46	15.3%		
P2-2/2C	2	1215	9	3.0%		
P2-3/2D	2	1150	2	0.7%		
P2-4/2E	2	1155	6	2.0%		
P2-5/2F	2	1105	12	4.0%		
P2-6/2G	2+Den	1460	6	2.0%		
P2-7/2H	2	1200	6	2.0%		
P2-8/2J	2	1140	12	4.0%		
P3-0/3A	3	1306	10	3.3%		
P3-1/3B	3	1400	12	4.0%		
Total			300	100%	265,825	886.1
Type			No. Units	Mix		
1 Bedroom Total			164	54.7%		
2 Bedroom Total			114	38.0%		
3 Bedroom Total			22	7.3%		
Total			300	100.0%		

*NRSF = Net rentable square footage: To outside face of stud + 1" air gap; does not include balcony

PROJECT NUMBER
210512
DRAWN BY
DATE
09/06/2022



Architecture + Planning
820 16th Street, Suite 500
Denver, CO 80202
303.825.6400
ktgy.com

PREPARED FOR CENTURY
COMMUNITIES



PROJECT

**COMPARK
VILLAGE
SOUTH**

TOWN OF PARKER, COUNTY
OF DOUGLAS, COLORADO
80134

SHEET TITLE

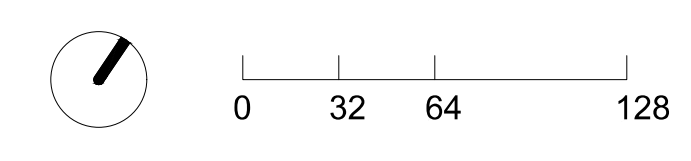
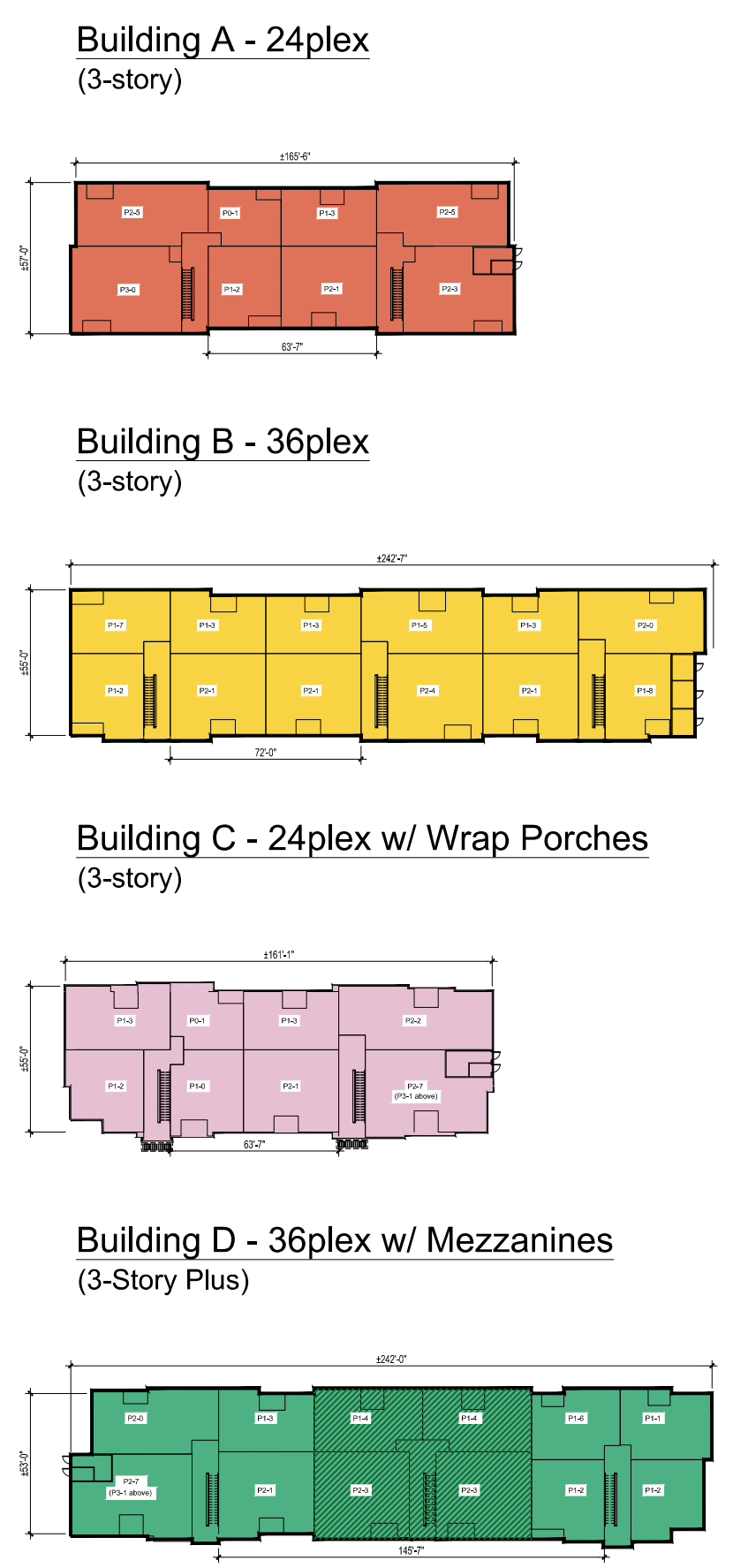
**PROJECT
DATA**

SHEET NUMBER

37

COMPARK VILLAGE SOUTH
F1 AMD 2 - MULTIFAMILY
SITE PLAN

LOT 1, COMPARK VILLAGE FILING NO. 1, AMEND NO. 2
SOUTH HALF SECTION 6, TOWNSHIP 6 SOUTH, RANGE 66 WEST OF THE 6TH PRINCIPAL MERIDIAN
TOWN OF PARKER, COUNTY OF DOUGLAS, STATE OF COLORADO



PROJECT NUMBER
210512

DRAWN BY

DATE
09/06/2022



PREPARED FOR CENTURY COMMUNITIES



PROJECT
COMPARK VILLAGE SOUTH

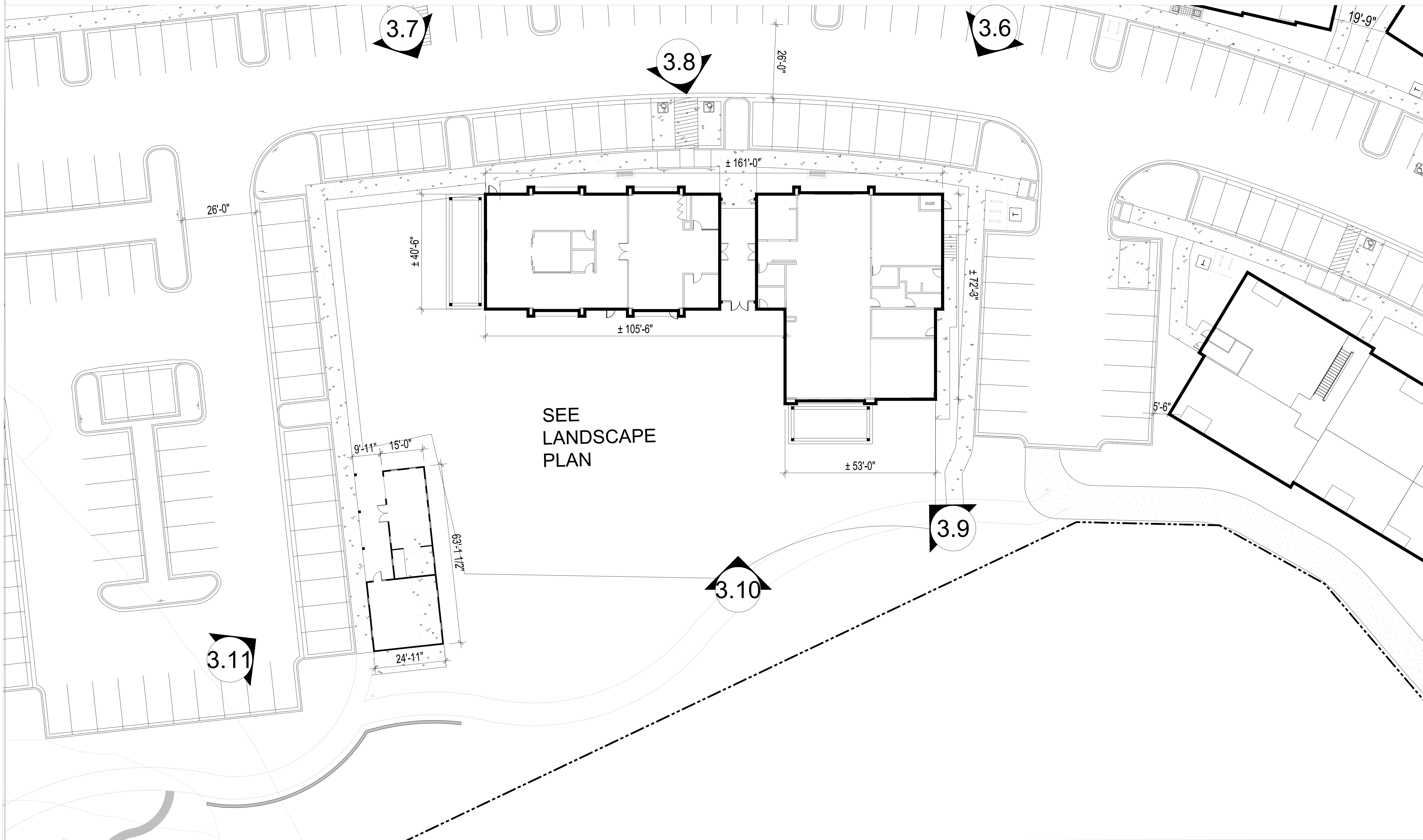
TOWN OF PARKER, COUNTY OF DOUGLAS, COLORADO 80134

SHEET TITLE
BUILDING KEY PLAN - GROUND LEVEL

SHEET NUMBER
38

COMPARK VILLAGE SOUTH
F1 AMD 2 - MULTIFAMILY
SITE PLAN

LOT 1, COMPARK VILLAGE FILING NO. 1, AMEND NO. 2
SOUTH HALF SECTION 6, TOWNSHIP 6 SOUTH, RANGE 66 WEST OF THE 6TH PRINCIPAL MERIDIAN
TOWN OF PARKER, COUNTY OF DOUGLAS, STATE OF COLORADO



PROJECT NUMBER
210512
DRAWN BY
DATE
09/06/2022



PREPARED FOR CENTURY
COMMUNITIES

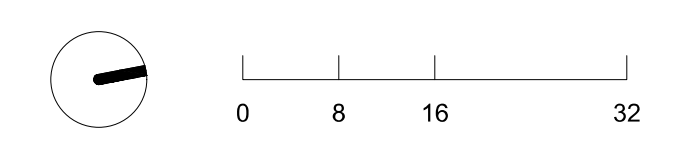


PROJECT
**COMPARK
VILLAGE
SOUTH**

TOWN OF PARKER, COUNTY
OF DOUGLAS, COLORADO
80134

SHEET TITLE
**CLUBHOUSE
BUILDING PLAN**

SHEET NUMBER
39



COMPARK VILLAGE SOUTH
F1 AMD 2 - MULTIFAMILY
SITE PLAN

LOT 1, COMPARK VILLAGE FILING NO. 1, AMEND NO. 2
SOUTH HALF SECTION 6, TOWNSHIP 6 SOUTH, RANGE 66 WEST OF THE 6TH PRINCIPAL MERIDIAN
TOWN OF PARKER, COUNTY OF DOUGLAS, STATE OF COLORADO

PROJECT NUMBER
210512
DRAWN BY
DATE
09/06/2022



Architecture + Planning
820 16th Street, Suite 500
Denver, CO 80202
kitgy.com
303.825.6400



3 BUILDING A - SIDE ELEVATION
1/16" = 1'-0"



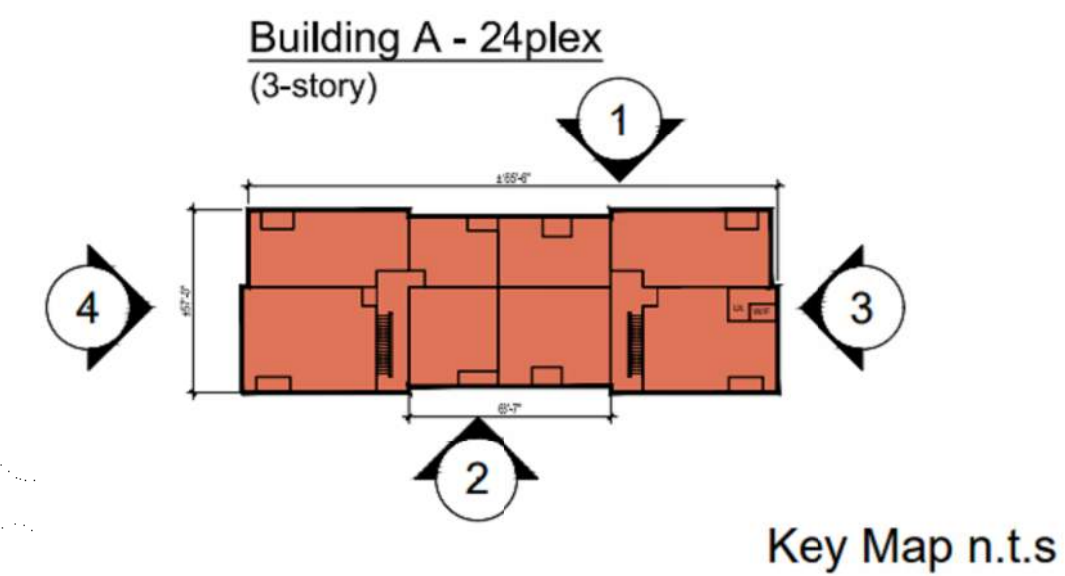
4 BUILDING A - SIDE ELEVATION
1/16" = 1'-0"



2 BUILDING A - REAR ELEVATION
1/16" = 1'-0"



1 BUILDING A - FRONT ELEVATION
1/16" = 1'-0"



#	KEYNOTES - SIP
1	BRICK - RUNNING - COLOR 1
2	BRICK - RUNNING - COLOR 2
3	FIBER CEMENT PANELING - COLOR 1
4	FIBER CEMENT PANELING - COLOR 2
5	FIBER CEMENT PANELING - COLOR 3
6	FIBER CEMENT PANELING - COLOR 4
7	METAL PANEL - COLOR 1
8	METAL PANEL - COLOR 2
9	BOARD AND BATTEN - COLOR 1
10	BOARD AND BATTEN - COLOR 2
11	VERTICAL SIDING - COLOR 1
12	VERTICAL SIDING - COLOR 2
13	VERTICAL SIDING - COLOR 3
14	VERTICAL SIDING - COLOR 4
15	VERTICAL SIDING - COLOR 5
16	VINYL WINDOW
18	METAL RAILING
19	MECHANICAL SCREEN - 58% OPEN WIRE MESH - COLOR 1 (BLACK)
20	STOREFRONT
21	COLUMN
22	ASPHALT SHINGLE ROOFING
23	BOARD & BATTEN - COLOR 3 - DARK GREY
24	STONE - COLOR 1
25	EXTERIOR LIGHT FIXTURE
26	HORIZONTAL SIDING - COLOR 1
27	HORIZONTAL SIDING - COLOR 2
28	HORIZONTAL SIDING - COLOR 3
29	HORIZONTAL SIDING - COLOR 4
30	HORIZONTAL SIDING - COLOR 5
32	DOWNSPOUT

NOTES:
1. SEE MATERIAL BOARDS FOR MORE INFORMATION.
2. SEE SITE PLAN FOR DIMENSIONS BETWEEN ENTRIES.
3. GROUND FLOOR TRANSPARENCY TO BE MIN. OF 25% MEASURED AS A PERCENTAGE OF GLAZING AT THE BASE OF THE BUILDING.
4. UPPER FLOOR TRANSPARENCY TO BE MIN. OF 15% GLAZING MEASURED AS A PERCENTAGE OF GLAZING ON THE MIDDLE OF THE BUILDING.
5. TRIM AROUND WINDOWS SHALL BE A MINIMUM OF THREE AND ONE-HALF (3 1/2) INCHES WIDE, AND TRIM AROUND DOORS SHOULD BE A MINIMUM OF TWO (2) INCHES WIDE.

PREPARED FOR CENTURY COMMUNITIES



PROJECT

COMPARK VILLAGE SOUTH

TOWN OF PARKER, COUNTY OF DOUGLAS, COLORADO 80134

SHEET TITLE

BUILDING A ELEVATIONS

SHEET NUMBER

40

COMPARK VILLAGE SOUTH
F1 AMD 2 - MULTIFAMILY
SITE PLAN

LOT 1, COMPARK VILLAGE FILING NO. 1, AMEND NO. 2
SOUTH HALF SECTION 6, TOWNSHIP 6 SOUTH, RANGE 66 WEST OF THE 6TH PRINCIPAL MERIDIAN
TOWN OF PARKER, COUNTY OF DOUGLAS, STATE OF COLORADO



KEY MAP - n.t.s
BUILDING A

PROJECT NUMBER
210512

DRAWN BY

DATE
09/06/2022



Architecture + Planning
820 16th Street, Suite 500
Denver, CO 80202
ktgy.com
303.825.6400

PREPARED FOR CENTURY
COMMUNITIES



PROJECT
**COMPARK
VILLAGE
SOUTH**

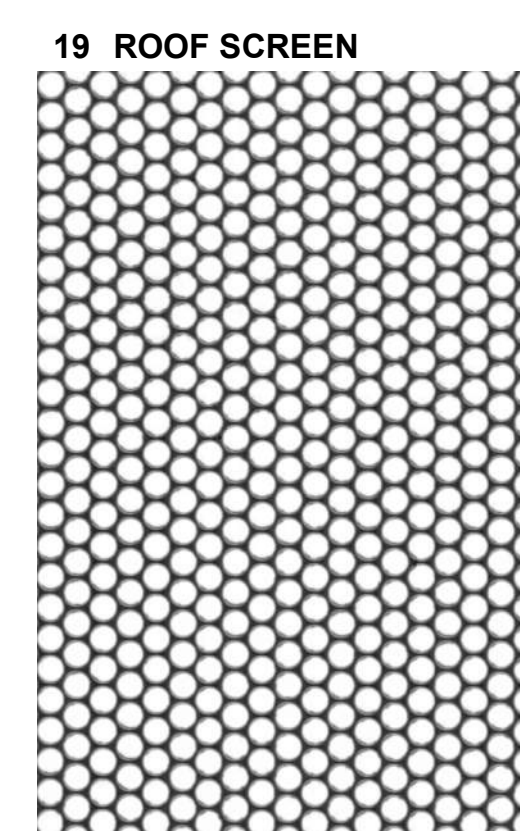
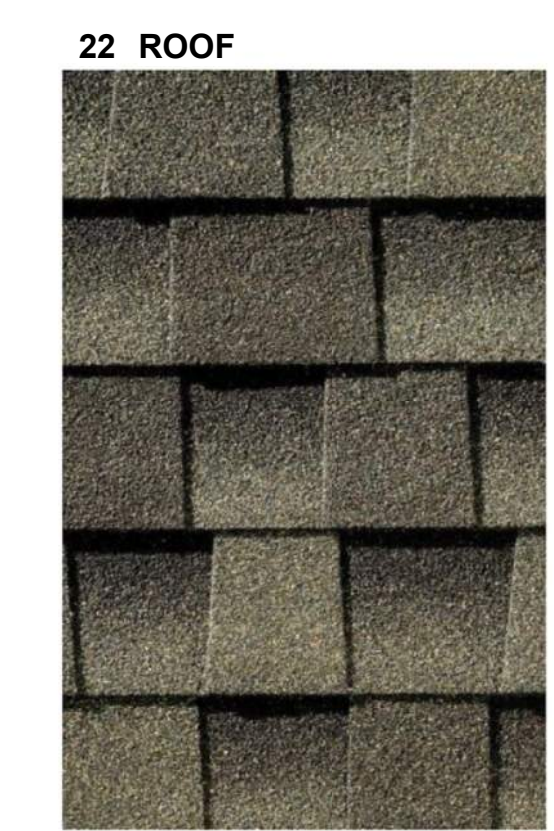
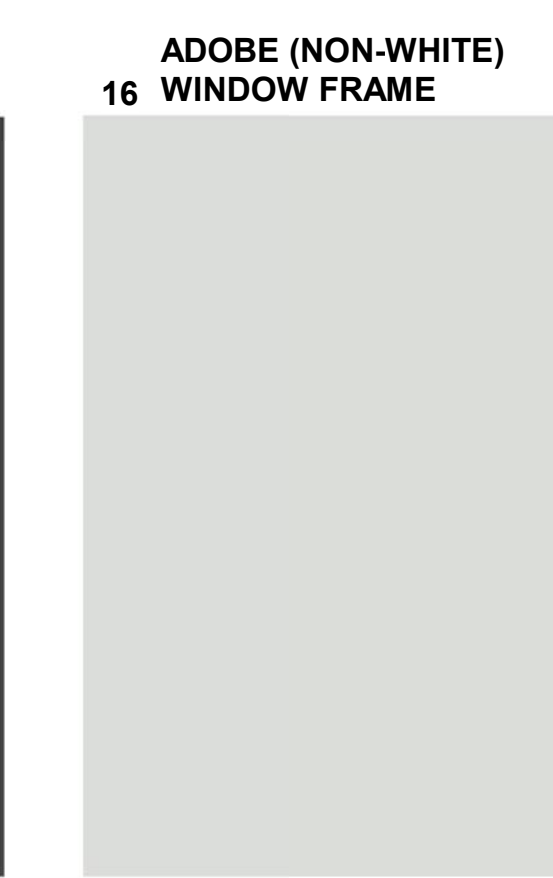
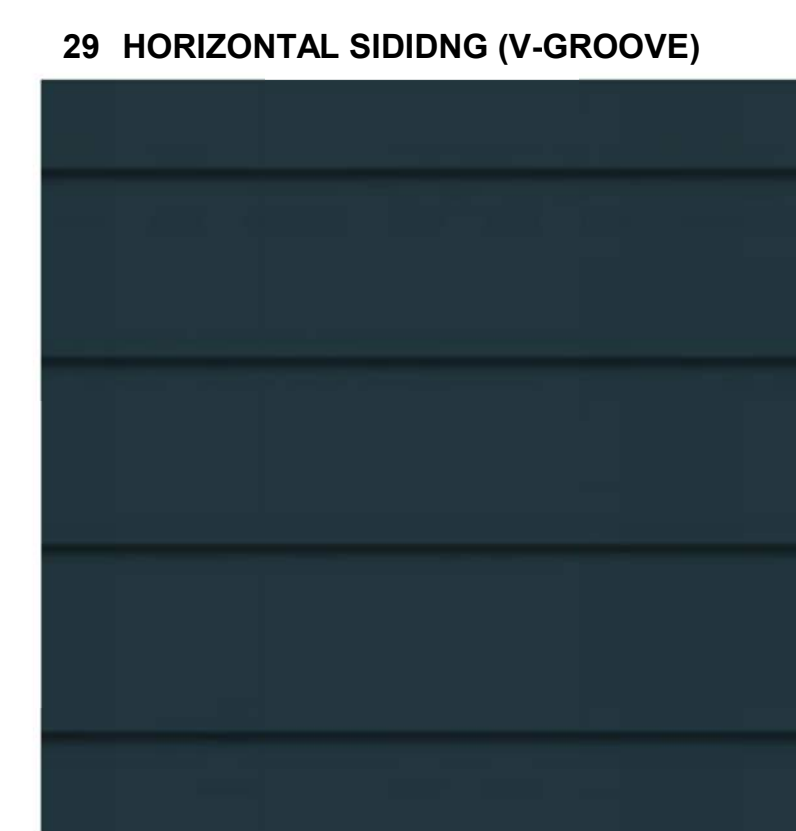
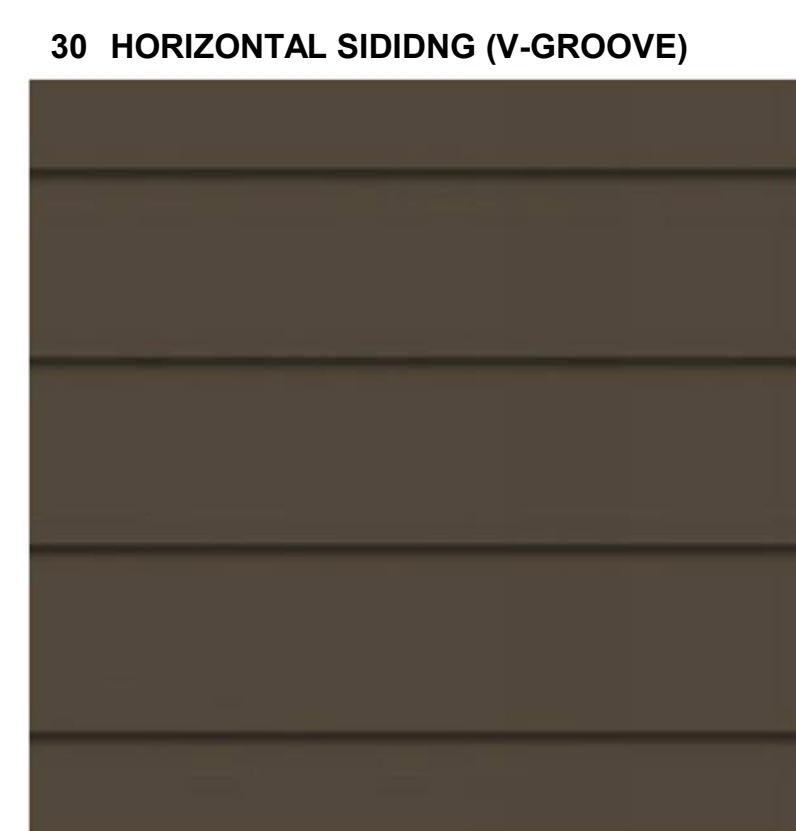
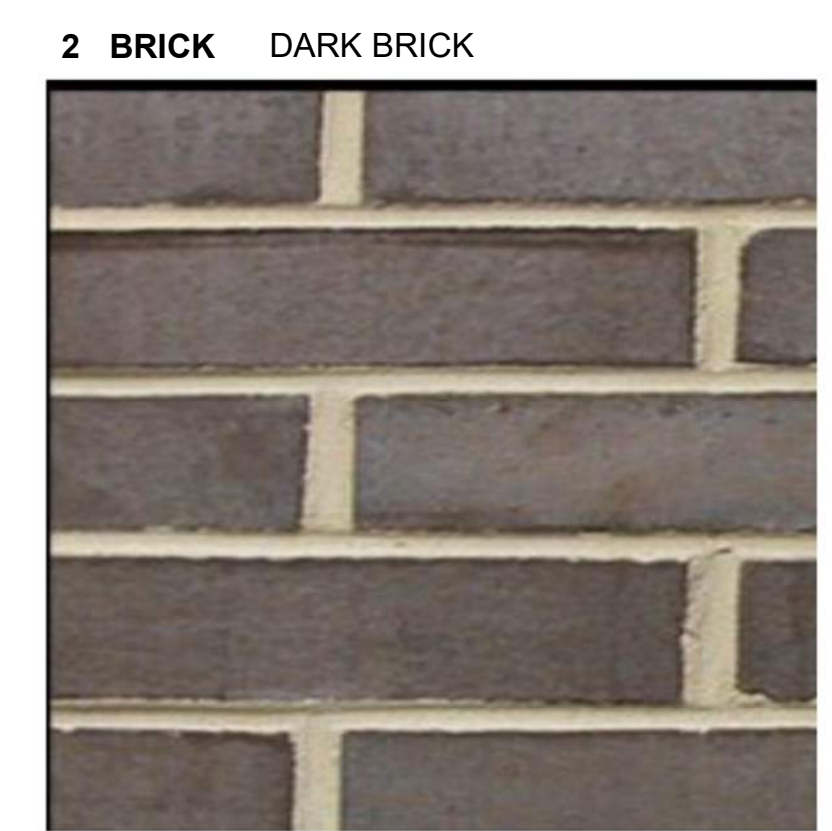
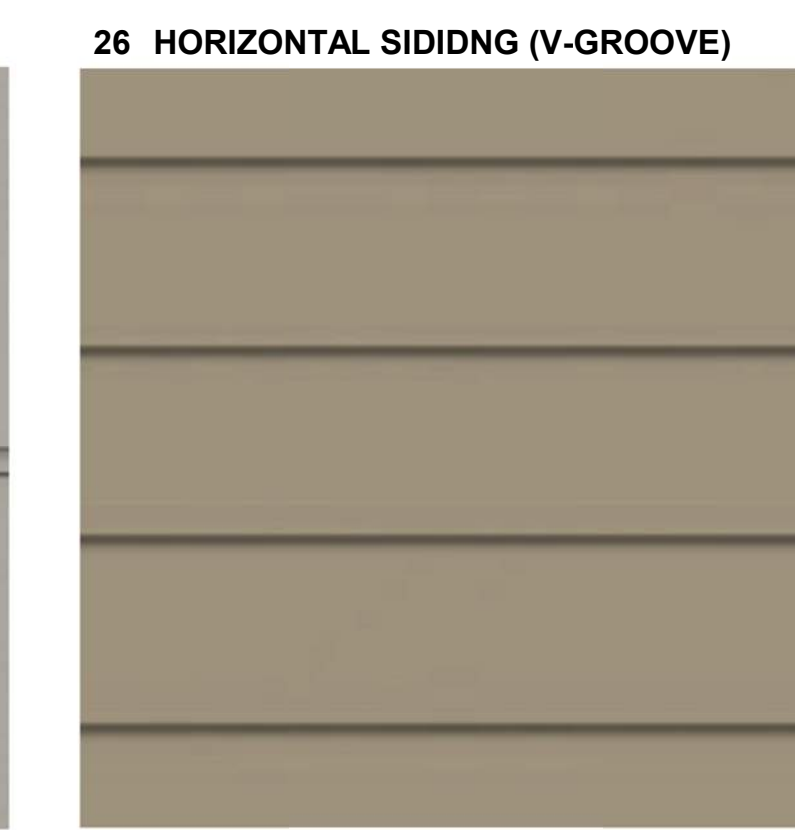
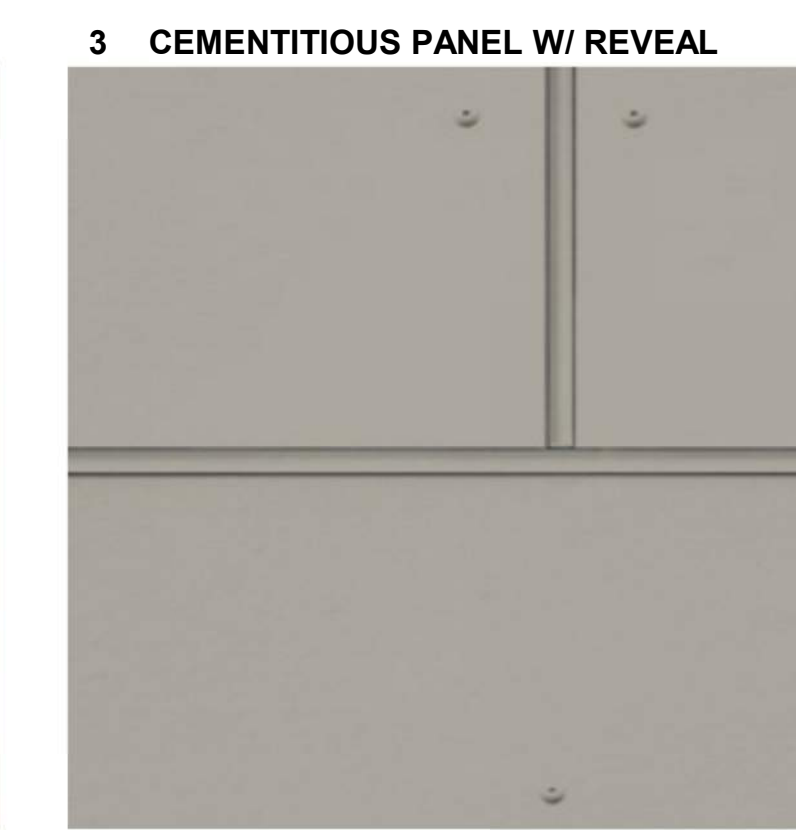
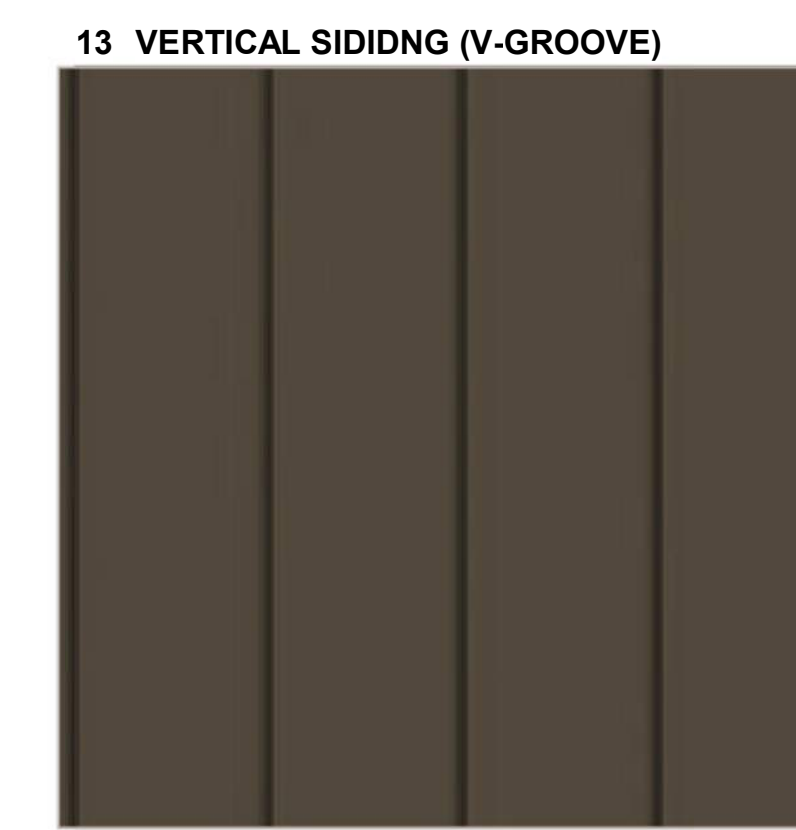
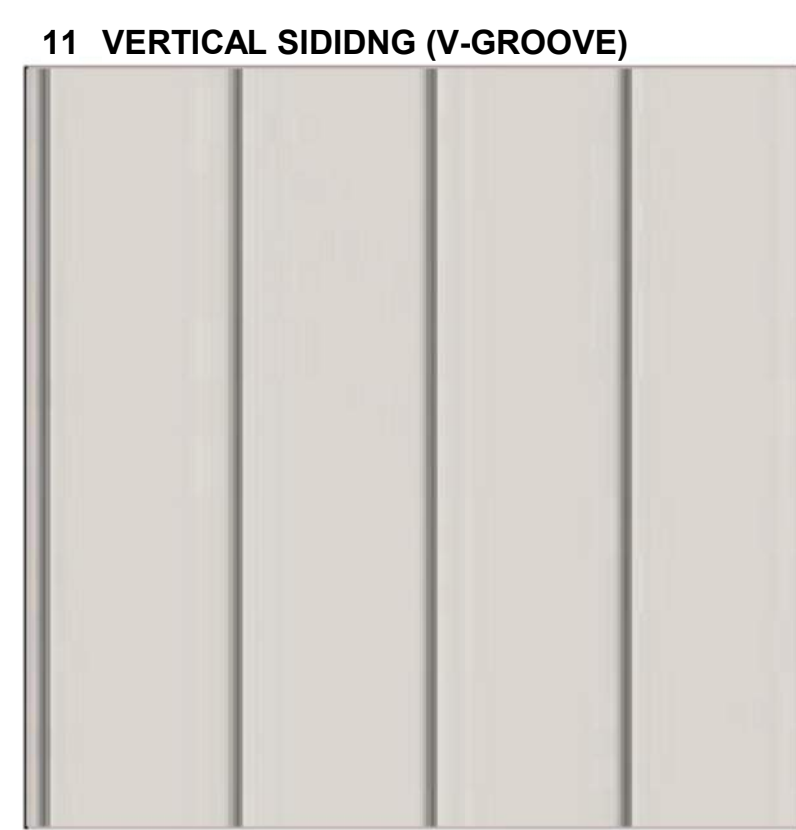
TOWN OF PARKER,
COUNTY
OF DOUGLAS, COLORADO
80134

SHEET TITLE
**BLDG A
MATERIAL
BOARD**

SHEET NUMBER
41



FRONT ELEVATION
Note: Trim around windows shall be minimum of three and one-half (3-1/2) inches wide, and trim around doors shall be a minimum of (2) inches wide.



COMPARK VILLAGE SOUTH
F1 AMD 2 - MULTIFAMILY
SITE PLAN

LOT 1, COMPARK VILLAGE FILING NO. 1, AMEND NO. 2
SOUTH HALF SECTION 6, TOWNSHIP 6 SOUTH, RANGE 66 WEST OF THE 6TH PRINCIPAL MERIDIAN
TOWN OF PARKER, COUNTY OF DOUGLAS, STATE OF COLORADO

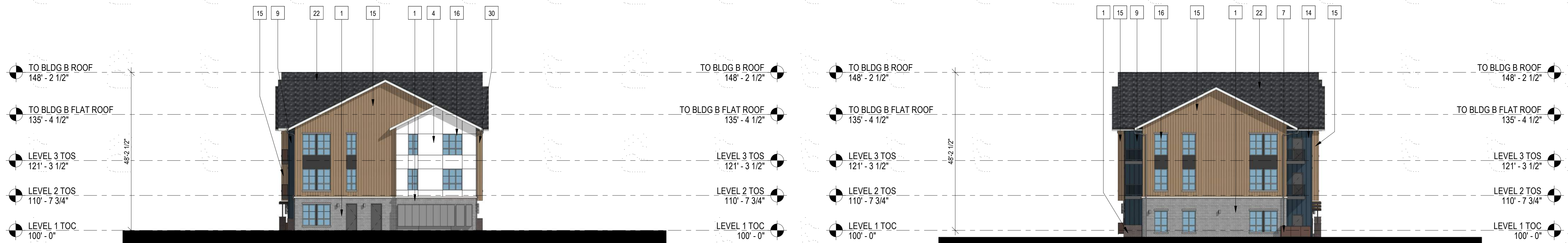
PROJECT NUMBER
210512

DRAWN BY

DATE
09/06/2022



Architecture + Planning
820 16th Street, Suite 500
Denver, CO 80202
ktgy.com
303.825.6400



3 BUILDING B - SIDE ELEVATION
1/16" = 1'-0"

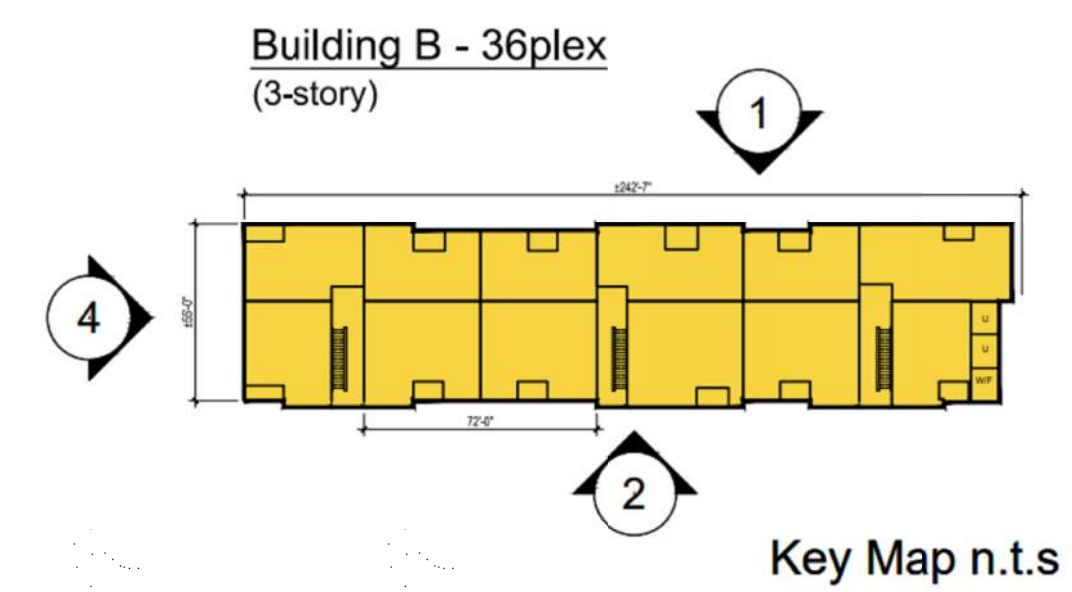
4 BUILDING B - SIDE ELEVATION
1/16" = 1'-0"



2 BUILDING B - REAR ELEVATION
1/16" = 1'-0"



1 BUILDING B - FRONT ELEVATION
1/16" = 1'-0"



#	KEYNOTES - SIP
1	BRICK - RUNNING - COLOR 1
2	BRICK - RUNNING - COLOR 2
3	FIBER CEMENT PANELING - COLOR 1
4	FIBER CEMENT PANELING - COLOR 2
5	FIBER CEMENT PANELING - COLOR 3
6	FIBER CEMENT PANELING - COLOR 4
7	METAL PANEL - COLOR 1
8	METAL PANEL - COLOR 2
9	BOARD AND BATTEN - COLOR 1
10	BOARD AND BATTEN - COLOR 2
11	VERTICAL SIDING - COLOR 1
12	VERTICAL SIDING - COLOR 2
13	VERTICAL SIDING - COLOR 3
14	VERTICAL SIDING - COLOR 4
15	VERTICAL SIDING - COLOR 5
16	VINYL WINDOW
17	METAL RAILING
18	MECHANICAL SCREEN - 58% OPEN WIRE MESH - COLOR 1 (BLACK)
19	STOREFRONT
20	COLUMN
21	ASPHALT SHINGLE ROOFING
22	BOARD & BATTEN - COLOR 3 - DARK GREY
23	STONE - COLOR 1
24	EXTERIOR LIGHT FIXTURE
25	HORIZONTAL SIDING - COLOR 1
26	HORIZONTAL SIDING - COLOR 2
27	HORIZONTAL SIDING - COLOR 3
28	HORIZONTAL SIDING - COLOR 4
29	HORIZONTAL SIDING - COLOR 5
30	DOWNSPOUT

NOTES:
1. SEE MATERIAL BOARDS FOR MORE INFORMATION.
2. SEE SITE PLAN FOR DIMENSIONS BETWEEN ENTRIES.
3. GROUND FLOOR TRANSPARENCY TO BE MIN. OF 25% MEASURED AS A PERCENTAGE OF GLAZING AT THE BASE OF THE BUILDING
4. UPPER FLOOR TRANSPARENCY TO BE MIN. OF 15% GLAZING MEASURED AS A PERCENTAGE OF GLAZING ON THE MIDDLE OF THE BUILDING.
5. TRIM AROUND WINDOWS SHALL BE A MINIMUM OF THREE AND ONE-HALF (3 1/2) INCHES WIDE, AND TRIM AROUND DOORS SHOULD BE A MINIMUM OF TWO (2) INCHES WIDE.

PREPARED FOR CENTURY COMMUNITIES



PROJECT

COMPARK VILLAGE SOUTH

TOWN OF PARKER, COUNTY OF DOUGLAS, COLORADO 80134

SHEET TITLE

BUILDING B ELEVATIONS

SHEET NUMBER

42

COMPARK VILLAGE SOUTH
F1 AMD 2 - MULTIFAMILY
SITE PLAN

LOT 1, COMPARK VILLAGE FILING NO. 1, AMEND NO. 2
SOUTH HALF SECTION 6, TOWNSHIP 6 SOUTH, RANGE 66 WEST OF THE 6TH PRINCIPAL MERIDIAN
TOWN OF PARKER, COUNTY OF DOUGLAS, STATE OF COLORADO

PROJECT NUMBER
210512

DRAWN BY

DATE
09/06/2022



Architecture + Planning
820 16th Street, Suite 500
Denver, CO 80202
ktgy.com
303.825.6400



KEY MAP - n.t.s
BUILDING B



FRONT ELEVATION

Note: Trim around windows shall be minimum of three and one-half (3-1/2) inches wide, and trim around doors shall be a minimum of (2) inches wide.

1 BRICK LIGHT BRICK



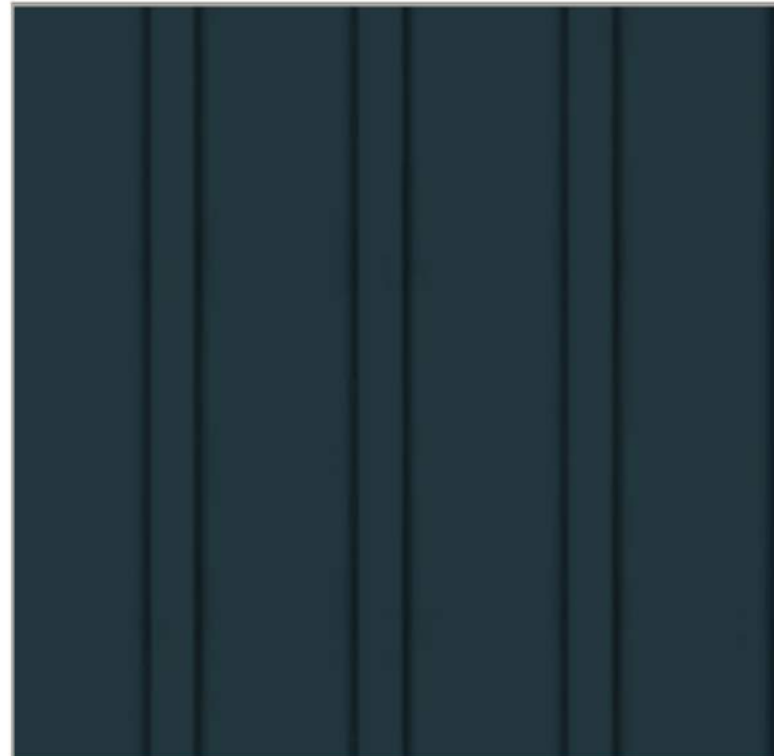
15 VERTICAL SIDING (WOOD TONE)



13 VERTICAL SIDING (V-GROOVE)



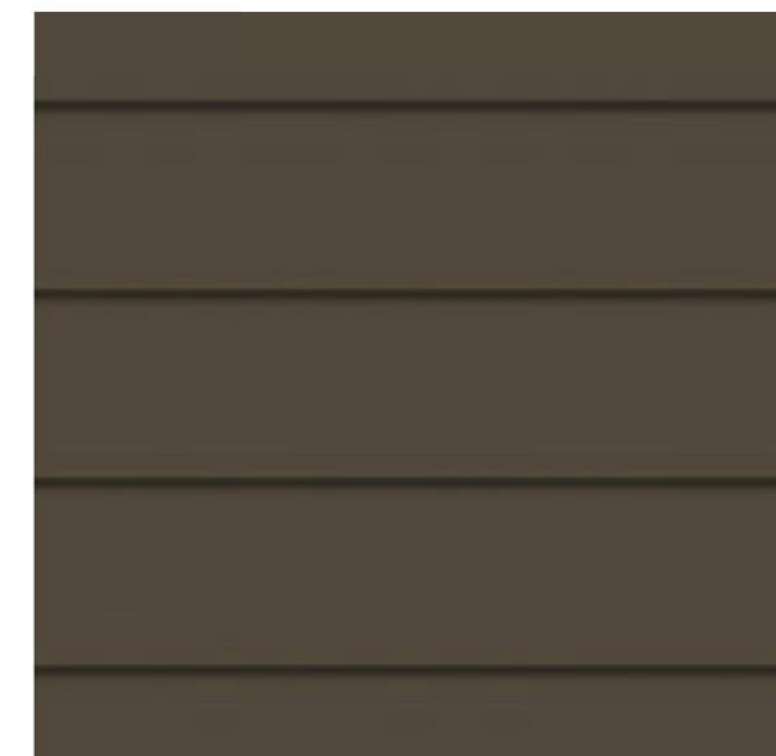
12 VERTICAL SIDING (V-GROOVE)



4 CEMENTITIOUS PANEL W/ REVEAL



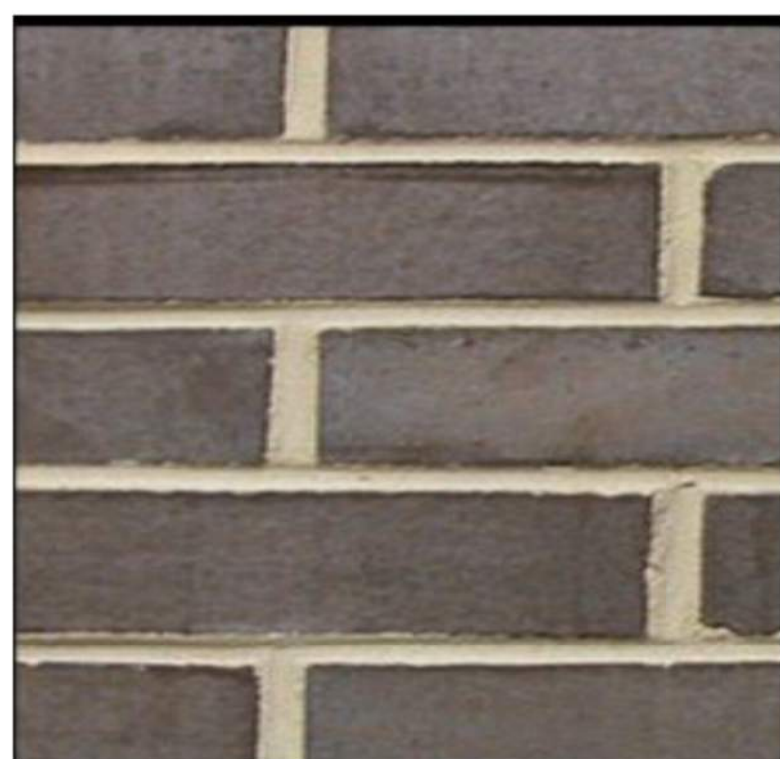
30 HORIZONTAL SIDING (V-GROOVE)



27 HORIZONTAL SIDING (V-GROOVE)



2 BRICK DARK BRICK



7 METAL PANEL



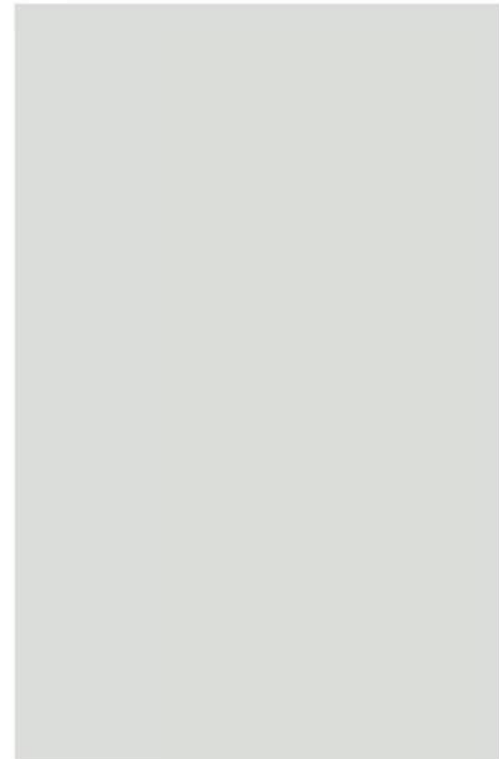
6 CEMENTITIOUS PANEL



5 CEMENTITIOUS PANEL



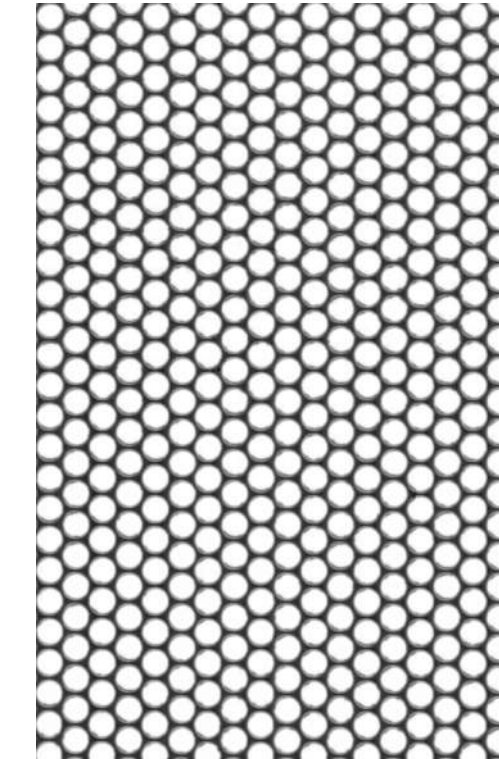
ADOBE (NON-WHITE)
16 WINDOW FRAME



22 ROOF



19 ROOF SCREEN



PREPARED FOR CENTURY
COMMUNITIES



PROJECT

COMPARK
VILLAGE
SOUTH

TOWN OF PARKER,
COUNTY
OF DOUGLAS, COLORADO
80134

SHEET TITLE

BLDG B
MATERIAL
BOARD

SHEET NUMBER

43

COMPARK VILLAGE SOUTH
F1 AMD 2 - MULTIFAMILY
SITE PLAN

LOT 1, COMPARK VILLAGE FILING NO. 1, AMEND NO. 2
SOUTH HALF SECTION 6, TOWNSHIP 6 SOUTH, RANGE 66 WEST OF THE 6TH PRINCIPAL MERIDIAN
TOWN OF PARKER, COUNTY OF DOUGLAS, STATE OF COLORADO

PROJECT NUMBER
210512

DRAWN BY

DATE
09/06/2022



Architecture + Planning
820 16th Street, Suite 500
Denver, CO 80202
ktgy.com
303.825.6400



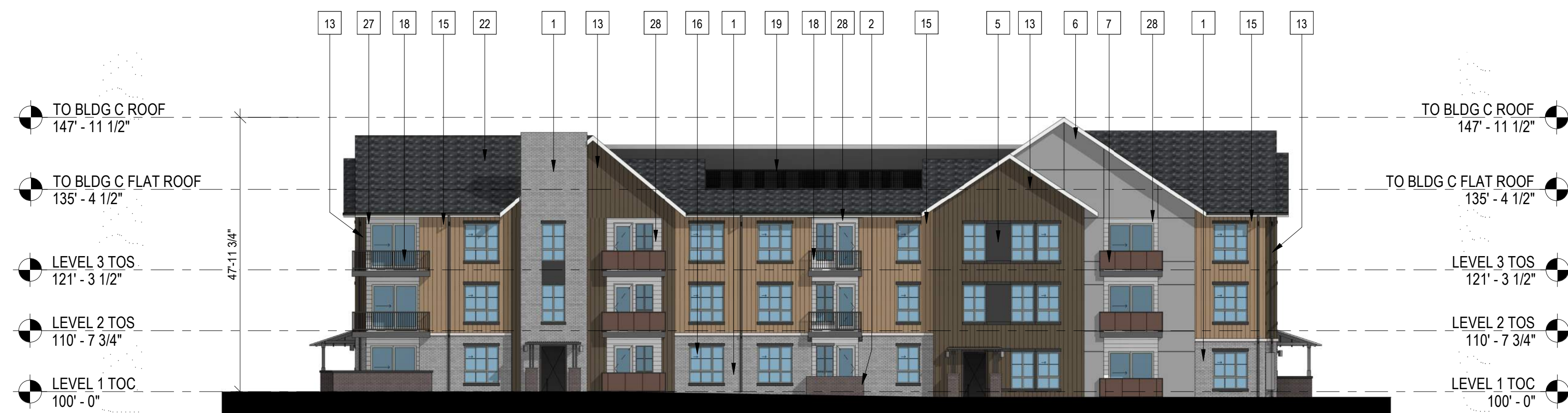
3 BUILDING C - SIDE ELEVATION
1/16" = 1'-0"



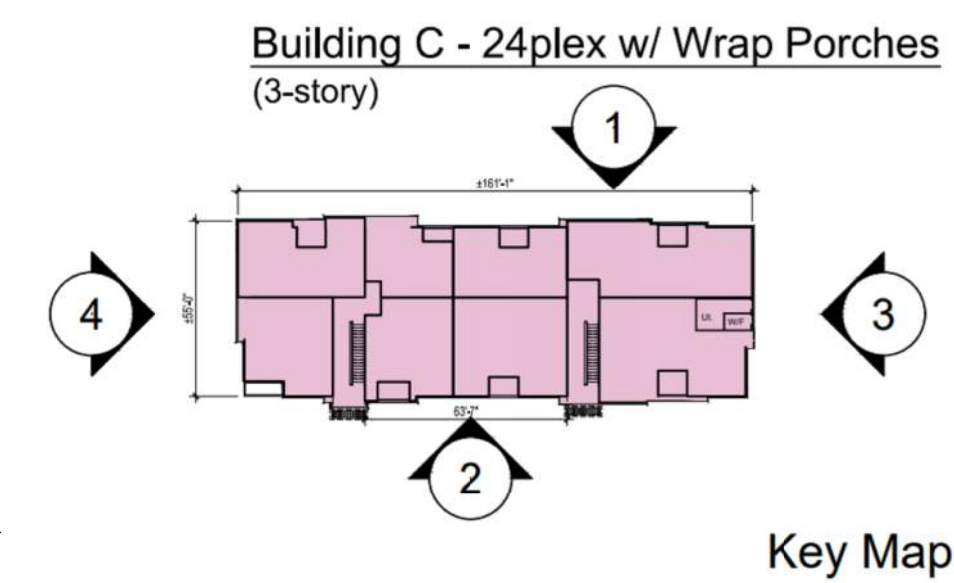
4 BUILDING C - SIDE ELEVATION
1/16" = 1'-0"



2 BUILDING C - REAR ELEVATION
1/16" = 1'-0"



1 BUILDING C - FRONT ELEVATION
1/16" = 1'-0"



KEYNOTES - SIP

- | # | KEYNOTES - SIP |
|----|--|
| 1 | BRICK - RUNNING - COLOR 1 |
| 2 | BRICK - RUNNING - COLOR 2 |
| 3 | FIBER CEMENT PANELING - COLOR 1 |
| 4 | FIBER CEMENT PANELING - COLOR 2 |
| 5 | FIBER CEMENT PANELING - COLOR 3 |
| 6 | FIBER CEMENT PANELING - COLOR 4 |
| 7 | METAL PANEL - COLOR 1 |
| 8 | METAL PANEL - COLOR 2 |
| 9 | BOARD AND BATTEN - COLOR 1 |
| 10 | BOARD AND BATTEN - COLOR 2 |
| 11 | VERTICAL SIDING - COLOR 1 |
| 12 | VERTICAL SIDING - COLOR 2 |
| 13 | VERTICAL SIDING - COLOR 3 |
| 14 | VERTICAL SIDING - COLOR 4 |
| 15 | VERTICAL SIDING - COLOR 5 |
| 16 | VINYL WINDOW |
| 17 | METAL RAILING |
| 18 | MECHANICAL SCREEN - 58% OPEN WIRE MESH - COLOR 1 (BLACK) |
| 19 | STOREFRONT |
| 20 | COLUMN |
| 21 | ASPHALT SHINGLE ROOFING |
| 22 | BOARD & BATTEN - COLOR 3 - DARK GREY |
| 23 | STONE - COLOR 1 |
| 24 | EXTERIOR LIGHT FIXTURE |
| 25 | HORIZONTAL SIDING - COLOR 1 |
| 26 | HORIZONTAL SIDING - COLOR 2 |
| 27 | HORIZONTAL SIDING - COLOR 3 |
| 28 | HORIZONTAL SIDING - COLOR 4 |
| 29 | HORIZONTAL SIDING - COLOR 5 |
| 30 | DOWNSPOUT |
| 32 | DOWNSPOUT |

- NOTES
- SEE MATERIAL BOARDS FOR MORE INFORMATION.
 - SEE SITE PLAN FOR DIMENSIONS BETWEEN ENTRIES.
 - GROUND FLOOR TRANSPARENCY TO BE MIN. OF 25% MEASURED AS A PERCENTAGE OF GLAZING AT THE BASE OF THE BUILDING
 - UPPER FLOOR TRANSPARENCY TO BE MIN. OF 15% GLAZING MEASURED AS A PERCENTAGE OF GLAZING ON THE MIDDLE OF THE BUILDING.
 - TRIM AROUND WINDOWS SHALL BE A MINIMUM OF THREE AND ONE-HALF (3 1/2) INCHES WIDE, AND TRIM AROUND DOORS SHOULD BE A MINIMUM OF TWO (2) INCHES WIDE.

PREPARED FOR CENTURY COMMUNITIES



PROJECT

COMPARK VILLAGE SOUTH

TOWN OF PARKER, COUNTY OF DOUGLAS, COLORADO 80134

SHEET TITLE

BUILDING C ELEVATIONS

SHEET NUMBER

44

COMPARK VILLAGE SOUTH
F1 AMD 2 - MULTIFAMILY
SITE PLAN

LOT 1, COMPARK VILLAGE FILING NO. 1, AMEND NO. 2
SOUTH HALF SECTION 6, TOWNSHIP 6 SOUTH, RANGE 66 WEST OF THE 6TH PRINCIPAL MERIDIAN
TOWN OF PARKER, COUNTY OF DOUGLAS, STATE OF COLORADO



KEY MAP - n.t.s
BUILDING C

PROJECT NUMBER
210512
DRAWN BY
DATE
09/06/2022



Architecture + Planning
820 16th Street, Suite 500
Denver, CO 80202
ktgy.com
303.825.6400

PREPARED FOR CENTURY
COMMUNITIES



PROJECT

**COMPARK
VILLAGE
SOUTH**

TOWN OF PARKER,
COUNTY
OF DOUGLAS, COLORADO
80134

SHEET TITLE

**BLDG C
MATERIAL
BOARD**

SHEET NUMBER

45

13 27 18 15 22 1 13 28 16 1 19 18 28 2 15 5 13 6 7 28 1 15 13



FRONT ELEVATION

Note: Trim around windows shall be minimum of three and one-half (3-1/2) inches wide, and trim around doors shall be a minimum of (2) inches wide.

1 BRICK LIGHT BRICK



15 VERTICAL SIDING (WOOD TONE)



13 VERTICAL SIDING (V-GROOVE)



6 CEMENTITIOUS PANEL W/ REVEAL



4 CEMENTITIOUS PANEL W/ REVEAL



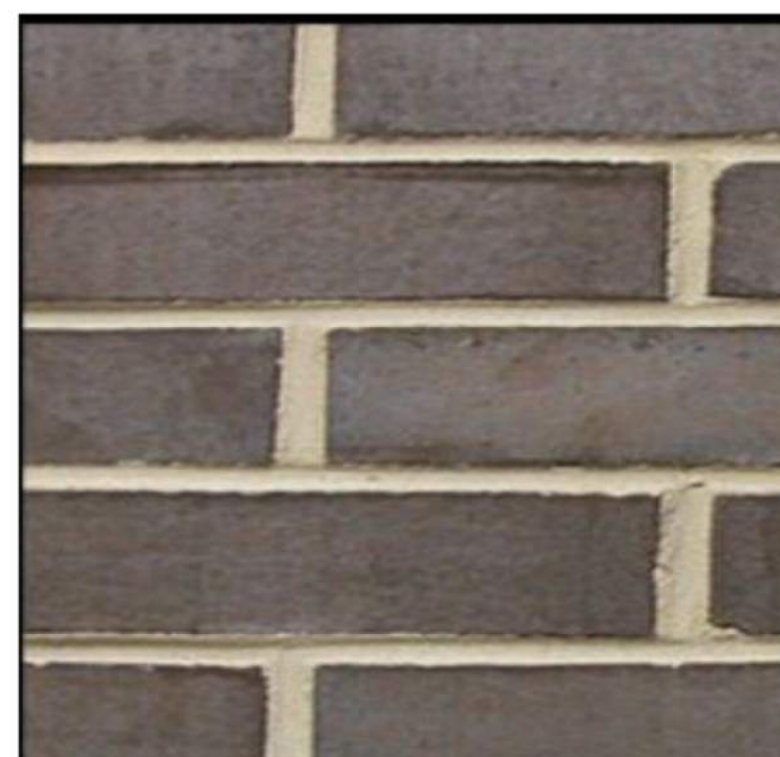
28 HORIZONTAL SIDING (V-GROOVE)



27 HORIZONTAL SIDING (V-GROOVE)



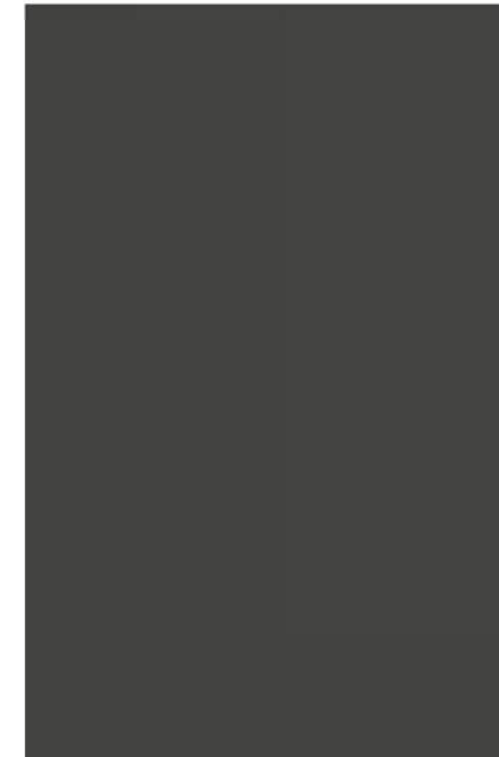
2 BRICK DARK BRICK



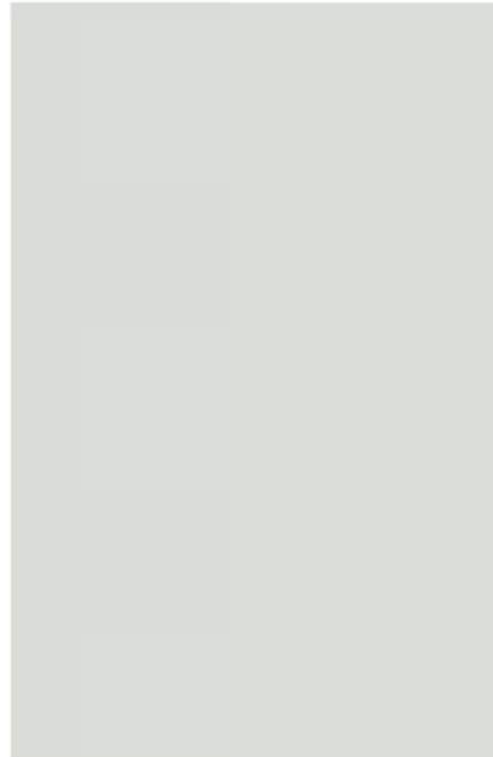
7 METAL PANEL



5 CEMENTITIOUS PANEL



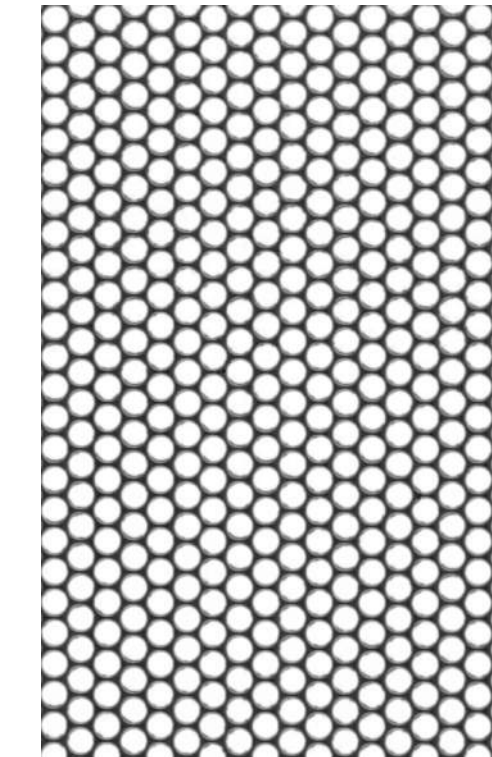
**ADOBE (NON-WHITE)
16 WINDOW FRAME**



22 ROOF



19 ROOF SCREEN



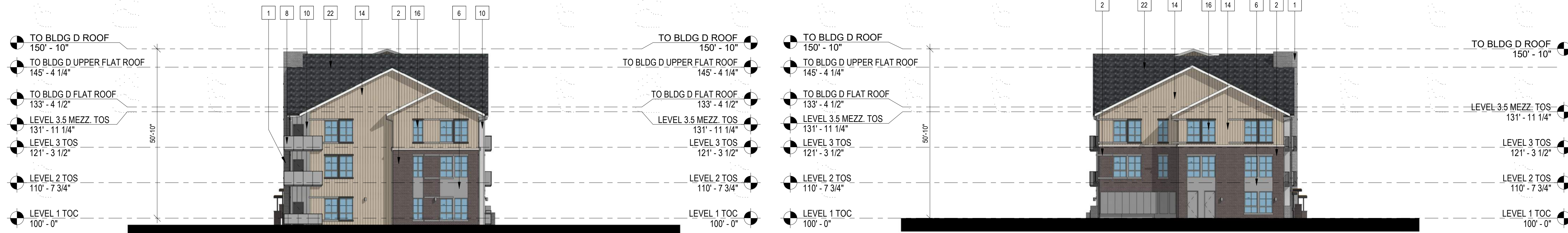
COMPARK VILLAGE SOUTH
F1 AMD 2 - MULTIFAMILY
SITE PLAN

LOT 1, COMPARK VILLAGE FILING NO. 1, AMEND NO. 2
SOUTH HALF SECTION 6, TOWNSHIP 6 SOUTH, RANGE 66 WEST OF THE 6TH PRINCIPAL MERIDIAN
TOWN OF PARKER, COUNTY OF DOUGLAS, STATE OF COLORADO

PROJECT NUMBER
210512
DRAWN BY
DATE
09/06/2022



Architecture + Planning
820 16th Street, Suite 500
Denver, CO 80202
ktgy.com
303.825.6400



3 BUILDING D - SIDE ELEVATION
1/16" = 1'-0"

4 BUILDING D - SIDE ELEVATION
1/16" = 1'-0"

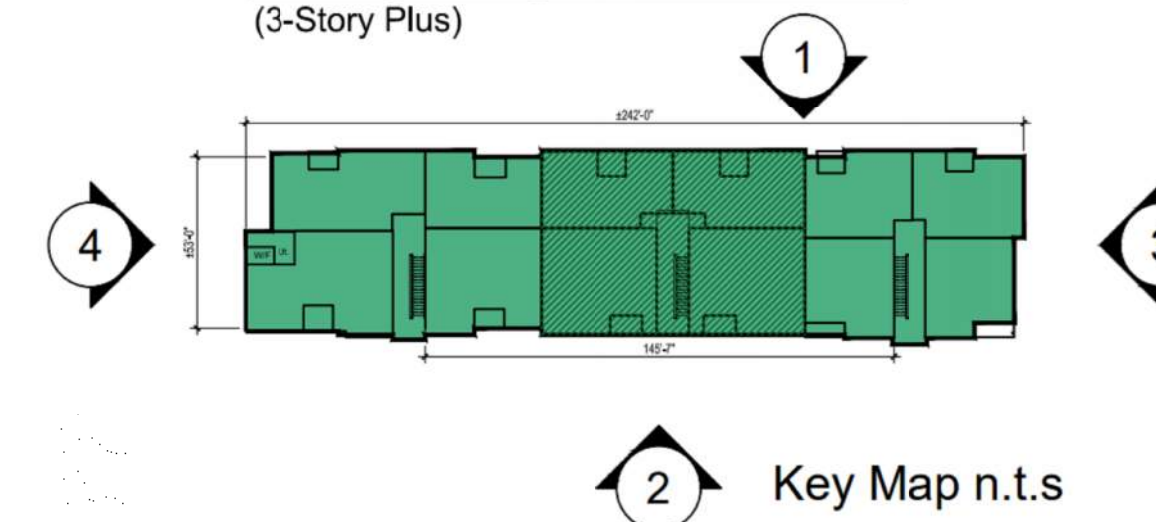


2 BUILDING D - REAR ELEVATION
1/16" = 1'-0"



1 BUILDING D - FRONT ELEVATION
1/16" = 1'-0"

Building D - 36plex w/ Mezzanines
(3-Story Plus)



2 Key Map n.t.s

KEYNOTES - SIP

- | # | KEYNOTES - SIP |
|----|--|
| 1 | BRICK - RUNNING - COLOR 1 |
| 2 | BRICK - RUNNING - COLOR 2 |
| 3 | FIBER CEMENT PANELING - COLOR 1 |
| 4 | FIBER CEMENT PANELING - COLOR 2 |
| 5 | FIBER CEMENT PANELING - COLOR 3 |
| 6 | FIBER CEMENT PANELING - COLOR 4 |
| 7 | METAL PANEL - COLOR 1 |
| 8 | METAL PANEL - COLOR 2 |
| 9 | BOARD AND BATTEN - COLOR 1 |
| 10 | BOARD AND BATTEN - COLOR 2 |
| 11 | VERTICAL SIDING - COLOR 1 |
| 12 | VERTICAL SIDING - COLOR 2 |
| 13 | VERTICAL SIDING - COLOR 3 |
| 14 | VERTICAL SIDING - COLOR 4 |
| 15 | VERTICAL SIDING - COLOR 5 |
| 16 | VINYL WINDOW |
| 18 | METAL RAILING |
| 19 | MECHANICAL SCREEN - 58% OPEN WIRE MESH - COLOR 1 (BLACK) |
| 20 | STOREFRONT |
| 21 | COLUMN |
| 22 | ASPHALT SHINGLE ROOFING |
| 23 | BOARD & BATTEN - COLOR 3 - DARK GREY |
| 24 | STONE - COLOR 1 |
| 25 | EXTERIOR LIGHT FIXTURE |
| 26 | HORIZONTAL SIDING - COLOR 1 |
| 27 | HORIZONTAL SIDING - COLOR 2 |
| 28 | HORIZONTAL SIDING - COLOR 3 |
| 29 | HORIZONTAL SIDING - COLOR 4 |
| 30 | HORIZONTAL SIDING - COLOR 5 |
| 32 | DOWNSPOUT |

- NOTES:
1. SEE MATERIAL BOARDS FOR MORE INFORMATION.
2. SEE SITE PLAN FOR DIMENSIONS BETWEEN ENTRIES.
3. GROUND FLOOR TRANSPARENCY TO BE MIN. OF 25% MEASURED AS A PERCENTAGE OF GLAZING AT THE BASE OF THE BUILDING.
4. UPPER FLOOR TRANSPARENCY TO BE MIN. OF 15% GLAZING MEASURED AS A PERCENTAGE OF GLAZING ON THE MIDDLE OF THE BUILDING.
5. TRIM AROUND WINDOWS SHALL BE A MINIMUM OF THREE AND ONE-HALF (3 1/2) INCHES WIDE, AND TRIM AROUND DOORS SHOULD BE A MINIMUM OF TWO (2) INCHES WIDE.

PREPARED FOR CENTURY COMMUNITIES



PROJECT

COMPARK VILLAGE SOUTH

TOWN OF PARKER, COUNTY OF DOUGLAS, COLORADO 80134

SHEET TITLE

BUILDING D ELEVATIONS

SHEET NUMBER

46

COMPARK VILLAGE SOUTH
F1 AMD 2 - MULTIFAMILY
SITE PLAN

LOT 1, COMPARK VILLAGE FILING NO. 1, AMEND NO. 2
SOUTH HALF SECTION 6, TOWNSHIP 6 SOUTH, RANGE 66 WEST OF THE 6TH PRINCIPAL MERIDIAN
TOWN OF PARKER, COUNTY OF DOUGLAS, STATE OF COLORADO

PROJECT NUMBER
210512

DRAWN BY

DATE
09/06/2022



KEY MAP - n.t.s
BUILDING D

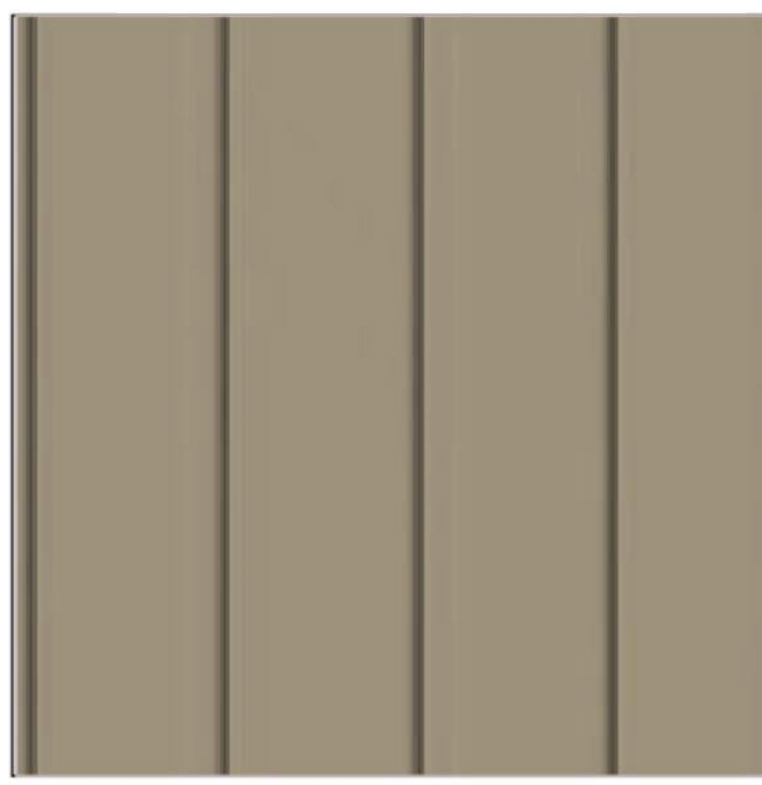


FRONT ELEVATION
Note: Trim around windows shall be minimum of three and one-half (3-1/2) inches wide, and trim around doors shall be a minimum of (2) inches wide.

1 BRICK LIGHT BRICK



14 VERTICAL SIDING (WOOD TONE)



19 VERTICAL SIDING (V-GROOVE)



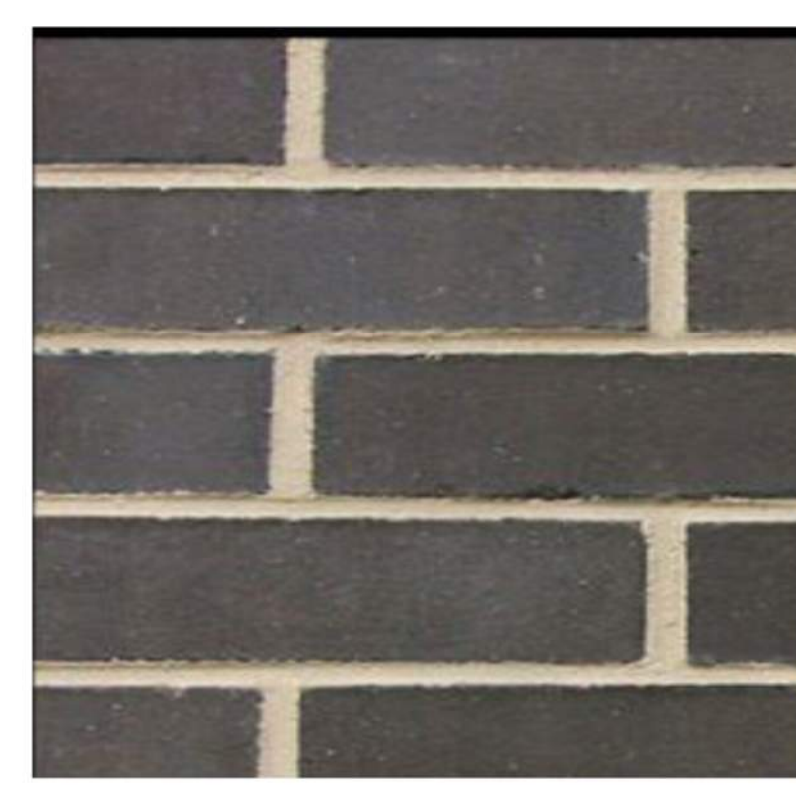
4 CEMENTITIOUS PANEL W/ REVEAL



28 HORIZONTAL SIDING (V-GROOVE)



2 BRICK DARK BRICK



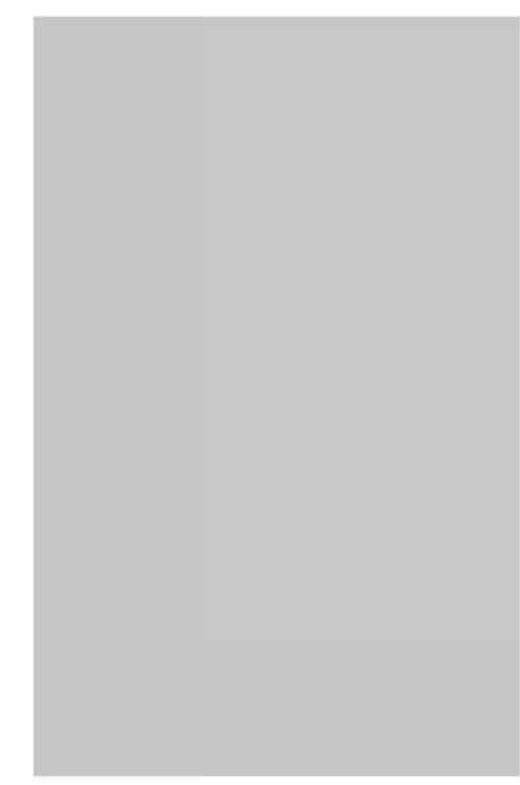
8 METAL PANEL



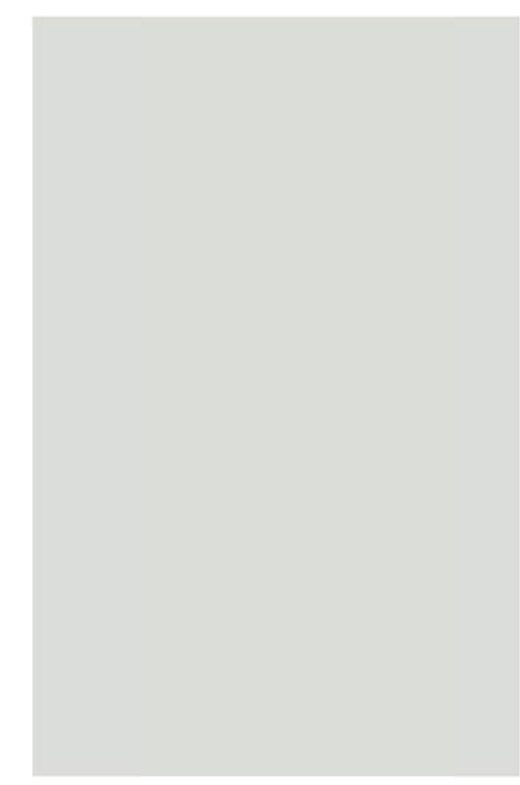
5 CEMENTITIOUS PANEL



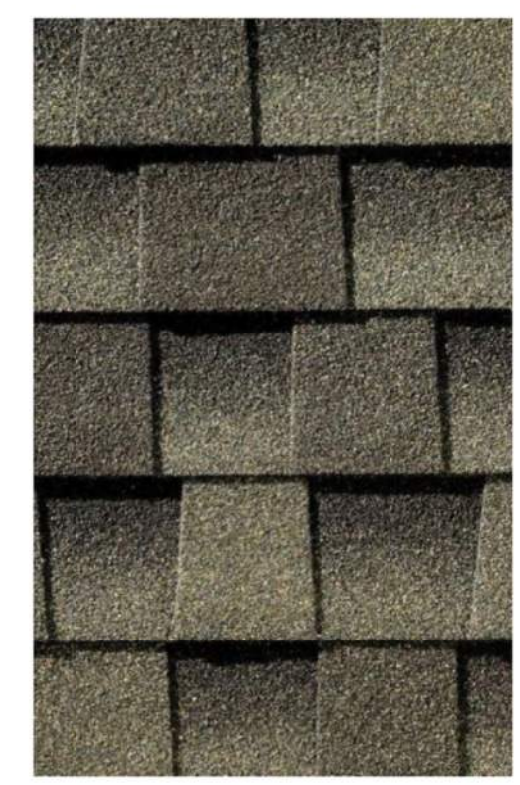
6 CEMENTITIOUS PANEL



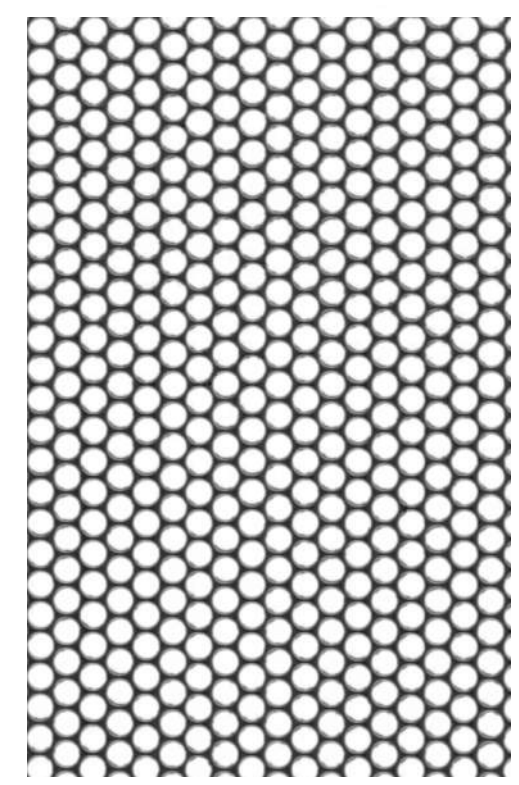
ADOBE (NON-WHITE)
16 WINDOW FRAME



22 ROOF



19 ROOF SCREEN



PREPARED FOR CENTURY
COMMUNITIES



PROJECT

**COMPARK
VILLAGE
SOUTH**

TOWN OF PARKER,
COUNTY OF DOUGLAS, COLORADO
80134

SHEET TITLE

**BLDG D
MATERIAL
BOARD**

SHEET NUMBER
47

COMPARK VILLAGE SOUTH
F1 AMD 2 - MULTIFAMILY
SITE PLAN

LOT 1, COMPARK VILLAGE FILING NO. 1, AMEND NO. 2
SOUTH HALF SECTION 6, TOWNSHIP 6 SOUTH, RANGE 66 WEST OF THE 6TH PRINCIPAL MERIDIAN
TOWN OF PARKER, COUNTY OF DOUGLAS, STATE OF COLORADO

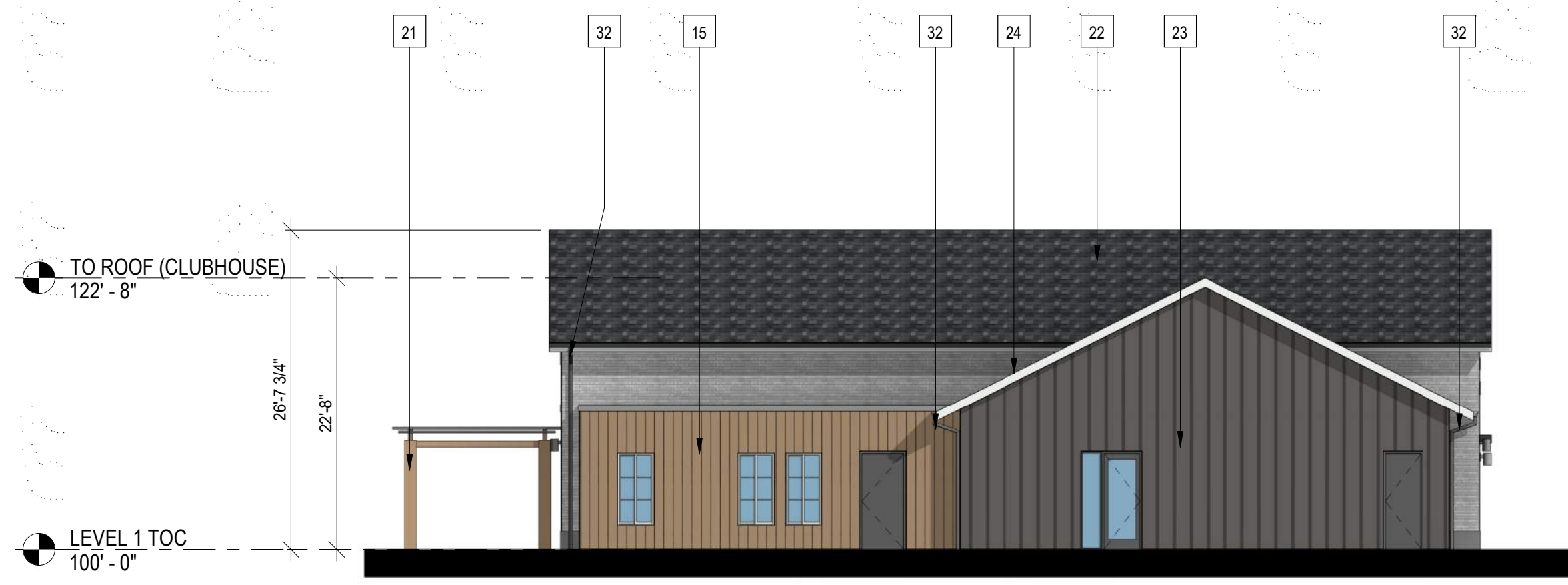
PROJECT NUMBER
210512

DRAWN BY

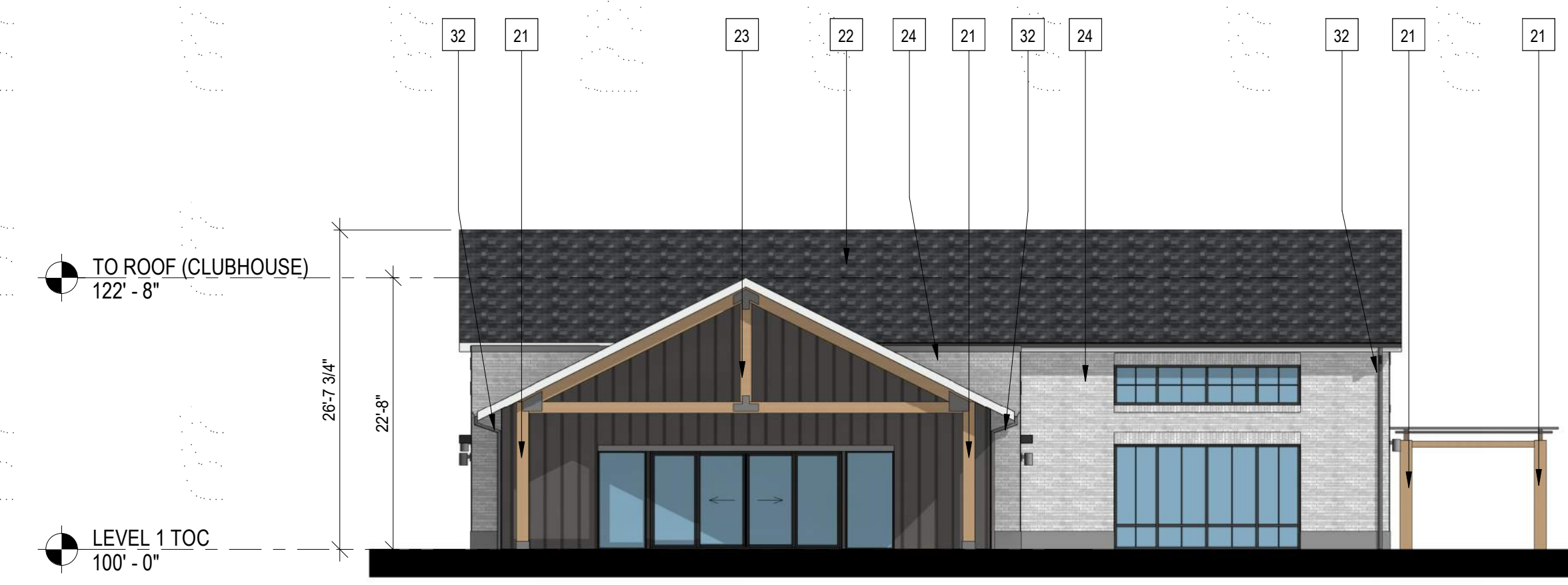
DATE
09/06/2022



Architecture + Planning
820 16th Street, Suite 500
Denver, CO 80202
ktgy.com
303.825.6400



4 CLUBHOUSE - SIDE ELEVATION
3/32" = 1'-0"



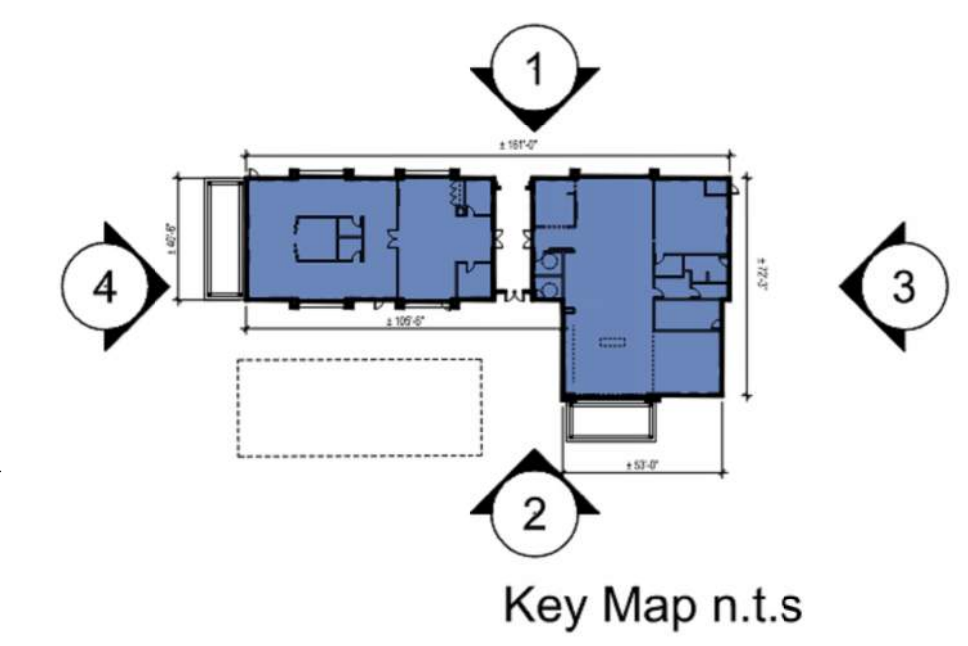
3 CLUBHOUSE - SIDE ELEVATION
3/32" = 1'-0"



2 CLUBHOUSE - REAR ELEVATION
3/32" = 1'-0"



1 CLUBHOUSE - FRONT ELEVATION
3/32" = 1'-0"



#	KEYNOTES - SIP
1	BRICK - RUNNING - COLOR 1
2	BRICK - RUNNING - COLOR 2
3	FIBER CEMENT PANELING - COLOR 1
4	FIBER CEMENT PANELING - COLOR 2
5	FIBER CEMENT PANELING - COLOR 3
6	FIBER CEMENT PANELING - COLOR 4
7	METAL PANEL - COLOR 1
8	METAL PANEL - COLOR 2
9	BOARD AND BATTEN - COLOR 1
10	BOARD AND BATTEN - COLOR 2
11	VERTICAL SIDING - COLOR 1
12	VERTICAL SIDING - COLOR 2
13	VERTICAL SIDING - COLOR 3
14	VERTICAL SIDING - COLOR 4
15	VERTICAL SIDING - COLOR 5
16	VINYL WINDOW
18	METAL RAILING
19	MECHANICAL SCREEN - 58% OPEN WIRE MESH - COLOR 1 (BLACK)
20	STOREFRONT
21	COLUMN
22	ASPHALT SHINGLE ROOFING
23	BOARD & BATTEN - COLOR 3 - DARK GREY
24	STONE - COLOR 1
25	EXTERIOR LIGHT FIXTURE
26	HORIZONTAL SIDING - COLOR 1
27	HORIZONTAL SIDING - COLOR 2
28	HORIZONTAL SIDING - COLOR 3
29	HORIZONTAL SIDING - COLOR 4
30	HORIZONTAL SIDING - COLOR 5
32	DOWNSPOUT

NOTES:
1. SEE MATERIAL BOARDS FOR MORE INFORMATION.
2. SEE SITE PLAN FOR DIMENSIONS BETWEEN ENTRIES.
3. GROUND FLOOR TRANSPARENCY TO BE MIN. OF 25% MEASURED AS A PERCENTAGE OF GLAZING AT THE BASE OF THE BUILDING.
4. TRIM AROUND WINDOWS SHALL BE A MINIMUM OF THREE AND ONE-HALF (3 1/2) INCHES WIDE, AND TRIM AROUND DOORS SHOULD BE A MINIMUM OF TWO (2) INCHES WIDE.

PREPARED FOR CENTURY COMMUNITIES



PROJECT
COMPARK VILLAGE SOUTH

TOWN OF PARKER, COUNTY OF DOUGLAS, COLORADO 80134

SHEET TITLE
CLUBHOUSE BUILDING ELEVATIONS

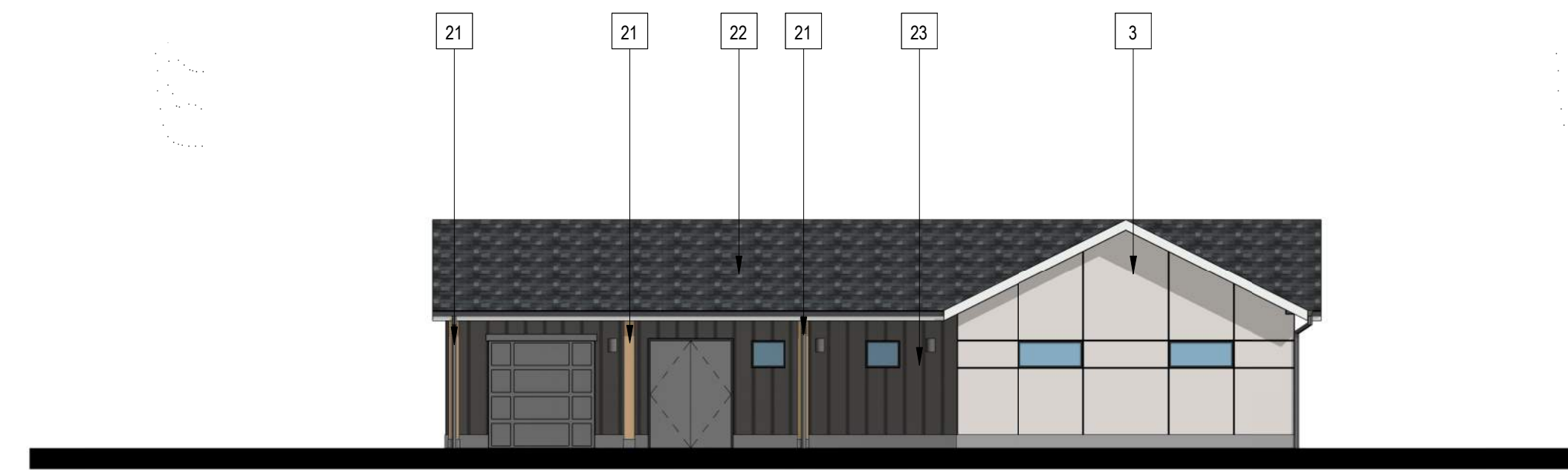
SHEET NUMBER
48

COMPARK VILLAGE SOUTH
F1 AMD 2 - MULTIFAMILY
SITE PLAN

LOT 1, COMPARK VILLAGE FILING NO. 1, AMEND NO. 2
SOUTH HALF SECTION 6, TOWNSHIP 6 SOUTH, RANGE 66 WEST OF THE 6TH PRINCIPAL MERIDIAN
TOWN OF PARKER, COUNTY OF DOUGLAS, STATE OF COLORADO



KEY MAP - n.t.s
**CLUBHOUSE / MAINTENANCE
SHED**



FRONT ELEVATION

Note: Trim around windows shall be minimum of three and one-half (3-1/2) inches wide, and trim around doors shall be a minimum of (2) inches wide.



FRONT ELEVATION

Note: Trim around windows shall be minimum of three and one-half (3-1/2) inches wide, and trim around doors shall be a minimum of (2) inches wide.

24 STONE LIGHT STONE



23 BOARD AND BATTEN



15 VERTICAL SIDING (WOOD TONE)



3 CEMENTITIOUS PANEL W/ REVEAL



21 COMPOSITE WOOD



ADOBE (NON-WHITE)
16 WINDOW FRAME



20 WINDOW FRAME



PROJECT NUMBER
210512

DRAWN BY

DATE
09/06/2022



Architecture + Planning
820 16th Street, Suite 500
Denver, CO 80202
ktgy.com
303.825.6400

PREPARED FOR CENTURY
COMMUNITIES



PROJECT

**COMPARK
VILLAGE
SOUTH**

TOWN OF PARKER,
COUNTY
OF DOUGLAS, COLORADO
80134

SHEET TITLE

**CLUBHOUSE AND
SHED MATERIAL
BOARD**

SHEET NUMBER

49

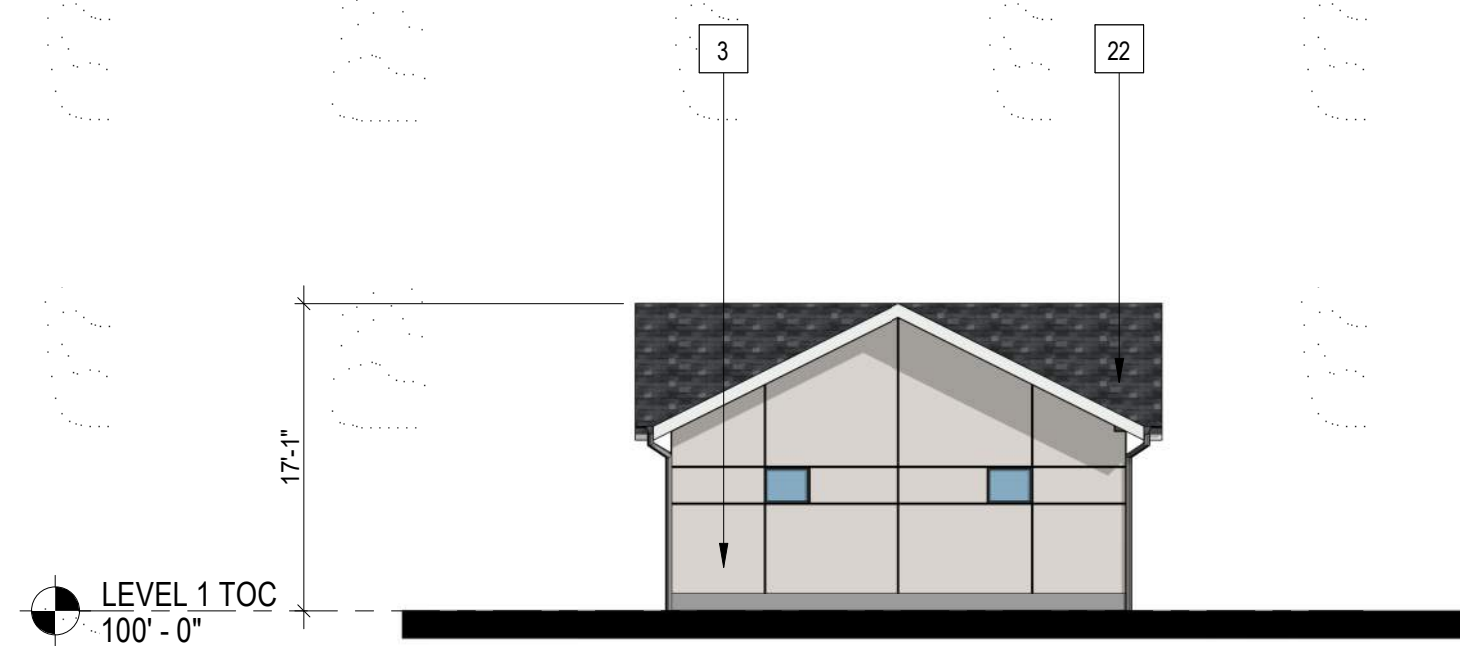
COMPARK VILLAGE SOUTH
F1 AMD 2 - MULTIFAMILY
SITE PLAN

LOT 1, COMPARK VILLAGE FILING NO. 1, AMEND NO. 2
SOUTH HALF SECTION 6, TOWNSHIP 6 SOUTH, RANGE 66 WEST OF THE 6TH PRINCIPAL MERIDIAN
TOWN OF PARKER, COUNTY OF DOUGLAS, STATE OF COLORADO

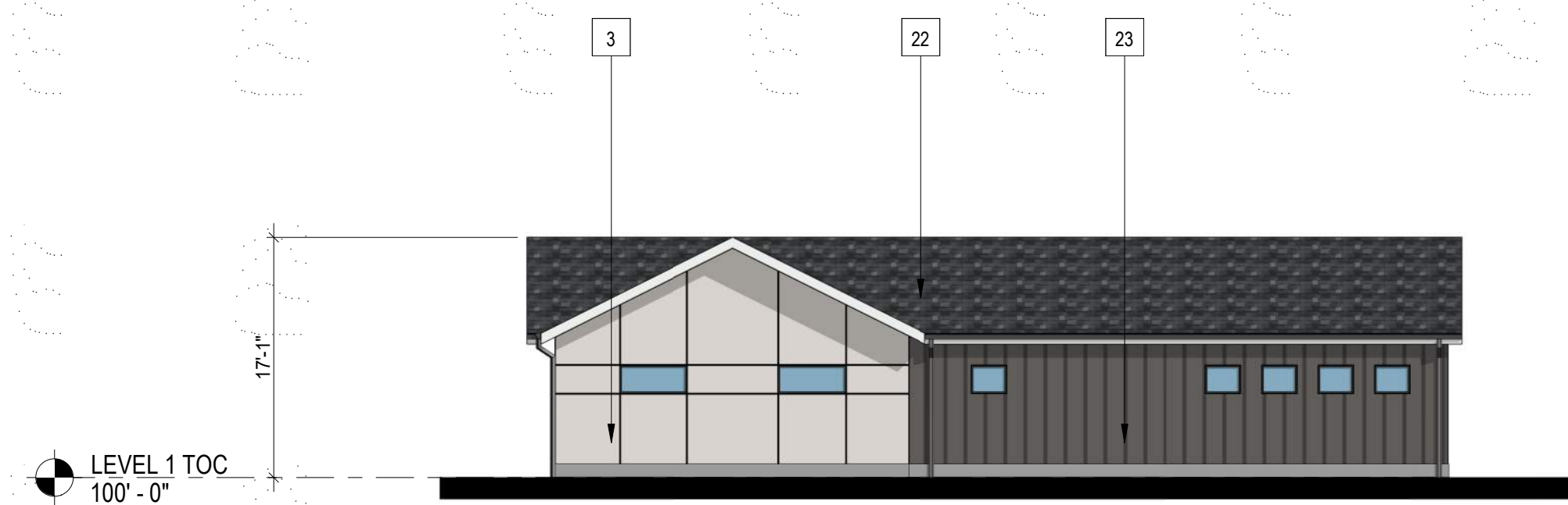
PROJECT NUMBER
210512
DRAWN BY
DATE
09/06/2022



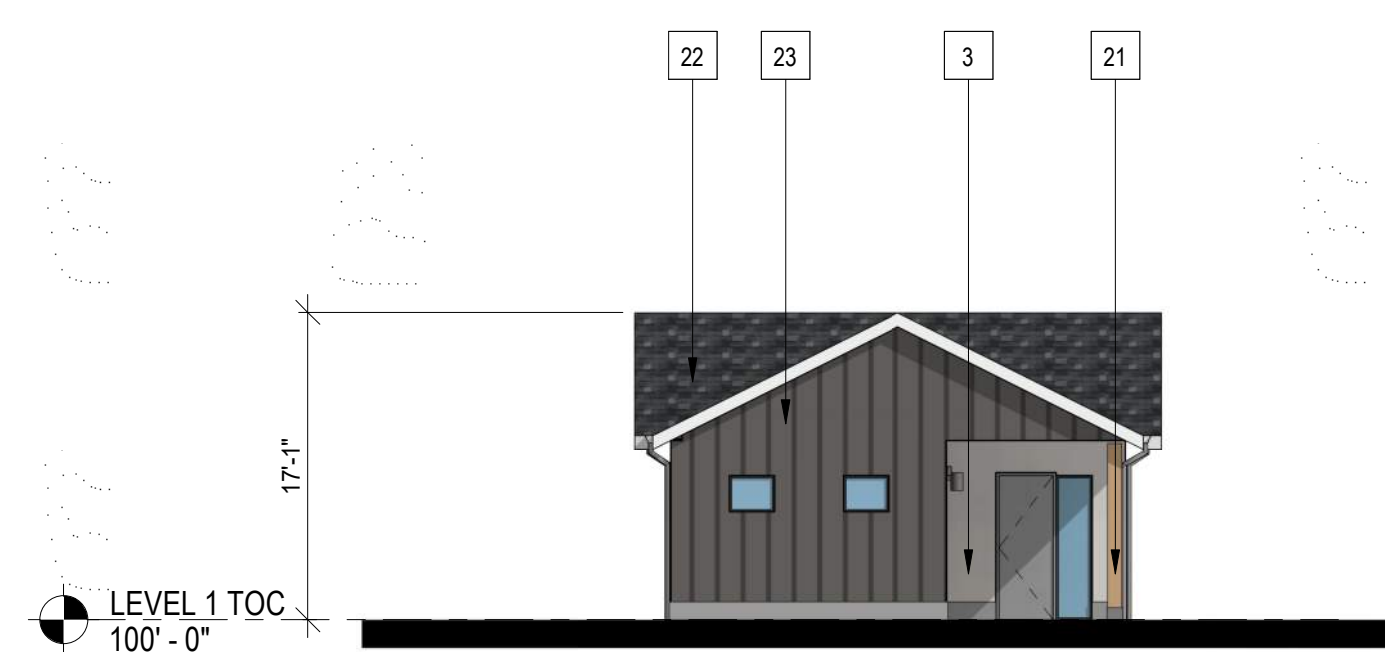
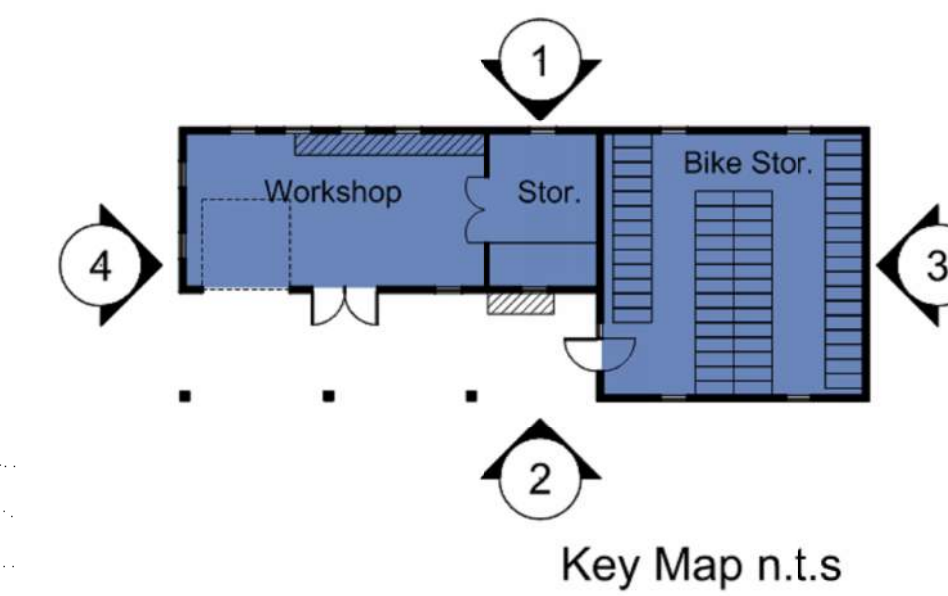
Architecture + Planning
820 16th Street, Suite 500
Denver, CO 80202
ktgy.com
303.825.6400



4 BUILDING E - SIDE ELEVATION
3/32" = 1'-0"



2 BUILDING E - REAR ELEVATION
3/32" = 1'-0"



3 BUILDING E - SIDE ELEVATION
3/32" = 1'-0"



1 BUILDING E - FRONT ELEVATION
3/32" = 1'-0"

#	KEYNOTES - SIP
1	BRICK - RUNNING - COLOR 1
2	BRICK - RUNNING - COLOR 2
3	FIBER CEMENT PANELING - COLOR 1
4	FIBER CEMENT PANELING - COLOR 2
5	FIBER CEMENT PANELING - COLOR 3
6	FIBER CEMENT PANELING - COLOR 4
7	METAL PANEL - COLOR 1
8	METAL PANEL - COLOR 2
9	BOARD AND BATTEN - COLOR 1
10	BOARD AND BATTEN - COLOR 2
11	VERTICAL SIDING - COLOR 1
12	VERTICAL SIDING - COLOR 2
13	VERTICAL SIDING - COLOR 3
14	VERTICAL SIDING - COLOR 4
15	VERTICAL SIDING - COLOR 5
16	VINYL WINDOW
18	METAL RAILING
19	MECHANICAL SCREEN - 58% OPEN WIRE MESH - COLOR 1 (BLACK)
20	STOREFRONT
21	COLUMN
22	ASPHALT SHINGLE ROOFING
23	BOARD & BATTEN - COLOR 3 - DARK GREY
24	STONE - COLOR 1
25	EXTERIOR LIGHT FIXTURE
26	HORIZONTAL SIDING - COLOR 1
27	HORIZONTAL SIDING - COLOR 2
28	HORIZONTAL SIDING - COLOR 3
29	HORIZONTAL SIDING - COLOR 4
30	HORIZONTAL SIDING - COLOR 5
32	DOWNSPOUT

NOTES:
1. SEE MATERIAL BOARDS FOR MORE INFORMATION.
2. SEE SITE PLAN FOR DIMENSIONS BETWEEN ENTRIES.
3. GROUND FLOOR TRANSPARENCY TO BE MIN. OF 25% MEASURED AS A PERCENTAGE OF GLAZING AT THE BASE OF THE BUILDING.
4. TRIM AROUND WINDOWS SHALL BE A MINIMUM OF THREE AND ONE-HALF (3 1/2) INCHES WIDE, AND TRIM AROUND DOORS SHOULD BE A MINIMUM OF TWO (2) INCHES WIDE.

PREPARED FOR CENTURY COMMUNITIES



PROJECT

COMPARK VILLAGE SOUTH

TOWN OF PARKER, COUNTY OF DOUGLAS, COLORADO 80134

SHEET TITLE

MAINTENANCE BUILDING ELEVATIONS

SHEET NUMBER

50

COMPARK VILLAGE SOUTH
F1 AMD 2 - MULTIFAMILY
SITE PLAN

LOT 1, COMPARK VILLAGE FILING NO. 1, AMEND NO. 2
SOUTH HALF SECTION 6, TOWNSHIP 6 SOUTH, RANGE 66 WEST OF THE 6TH PRINCIPAL MERIDIAN
TOWN OF PARKER, COUNTY OF DOUGLAS, STATE OF COLORADO



GENERAL NOTES:

1. ANY PROPOSED LIGHT FIXTURES INSTALLED ON PRIVATE PROPERTY, ADJACENT TO THE PUBLIC RIGHT-OF-WAY, SHALL BE ORIENTED IN SUCH A MANNER OR LIMITED IN LUMEN OUTPUT TO PREVENT GLARE PROBLEMS AND SHALL NOT EXCEED NATIONAL I.E.S. LIGHTING STANDARDS FOR DISABILITY GLARE.

SITE LIGHT FIXTURE SCHEDULE

TYPE	SERVES	DESCRIPTION	MANUFACTURER CATALOG NO.	LAMPS	NOTES
SA1	SITE	POLE MOUNTED FIXTURE	GARDCO_ECF-S-32L-530-WW-G2-LCL	55 W	20'
SA2	SITE	POLE MOUNTED FIXTURE	GARDCO_ECF-S-32L-530-WW-G2-RCL	55 W	20'
SA3	SITE	POLE MOUNTED FIXTURE	GARDCO_ECF-S-32L-530-WW-G2-3-HIS	56 W	20'
SA4	SITE	POLE MOUNTED FIXTURE	GARDCO_ECF-S-32L-530-WW-G2-3-HIS	56 W	20'
SB	SITE	POLE MOUNTED FIXTURE	GARDCO_P20-C-A01-830-T2S-EHS	21 W	10'
SC	SITE	POLE MOUNTED FIXTURE	GARDCO_ECF-S-32L-700-WW-G2-4-HIS	73 W	10'
SD	SITE	WALL SCONCE	GARDCO_111L-16L-350-WW-G2-4	18 W	10'

REFER TO SITE PLAN SYMBOLS AND LIGHTING TAGS FOR LIGHT FIXTURE MOUNTING AND NUMBER OF FIXTURES PER POLE

CALCULATION SUMMARY

LABEL	UNITS	AVG	MAX	MIN	AVG/MIN	MAX/MIN
LANDSCAPE PATH	FC	1.22	4.0	0.1	12.2	40.0
LANDSCAPE RAMP	FC	1.01	2.5	0.3	3.37	8.33
LANDSCAPE STEPS	FC	0.96	1.8	0.5	1.92	3.60
PARKING	FC	2.03	4.8	0.8	2.54	6.00
PATH 1	FC	2.58	3.9	1.1	2.35	3.55
PATH 2	FC	1.92	3.4	0.8	2.40	4.25
PATH 3	FC	1.99	3.8	0.9	2.21	4.22
PATH 4	FC	1.67	3.3	1.1	1.52	3.00
PATH 5	FC	1.95	3.0	0.9	2.17	3.33
PATH 6	FC	2.21	5.0	0.5	4.42	10.0
PATH 7	FC	2.08	3.7	0.7	2.97	5.29
PROP LINE TRACT 2	FC	0.27	0.9	0.0	N.A.	N.A.
PROP LINE TRACT G	FC	0.06	0.9	0.0	N.A.	N.A.
POOL DECK	FC	14.58	22.0	10.3	1.42	2.14

1 SITE PHOTOMETRIC PLAN
SCALE: 1" = 70'-0"

PROJECT NUMBER
65120950

DRAWN BY
TV

DATE
09/06/2022



PREPARED FOR CENTURY
COMMUNITIES



PROJECT
**COMPARK
VILLAGE
SOUTH**

TOWN OF PARKER, COUNTY
OF DOUGLAS, COLORADO
80134

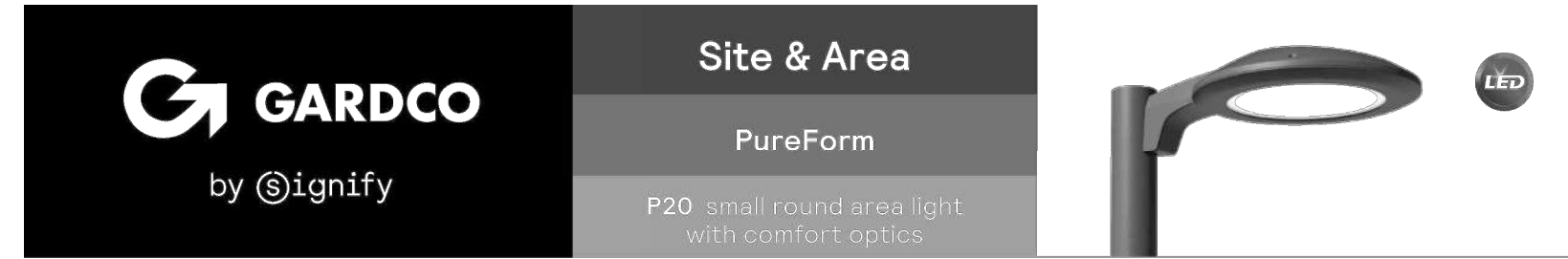
SHEET TITLE
SITE PHOTOMETRIC
PLAN & SCHEDULES

SHEET NUMBER
51

COMPARK VILLAGE SOUTH
F1 AMD 2 - MULTIFAMILY
SITE PLAN

LOT 1, COMPARK VILLAGE FILING NO. 1, AMEND NO. 2
SOUTH HALF SECTION 6, TOWNSHIP 6 SOUTH, RANGE 66 WEST OF THE 6TH PRINCIPAL MERIDIAN
TOWN OF PARKER, COUNTY OF DOUGLAS, STATE OF COLORADO

PROJECT NUMBER
65120950
DRAWN BY
TV
DATE
09/06/2022



Gardco PureForm LED area small round comfort P20 features a sleek, low profile design. Comfort optics are designed to enhance visual comfort by reducing glare and are ideally suited for pedestrian scale applications. Multiple optical distributions and color temperatures are available to allow you to customize your selection.

Project: _____
Location: _____
Cat.No: _____
Type: _____
Lumens: _____ Qty: _____
Notes: _____

Prefix	Optic Technology	Configuration (pole lumens)	Color Temperature	Distribution	Mounting	Voltage
P20	C					
P20	PureForm area small, 20" round	A01 2,000 lumens A02 4,000 lumens A03 6,000 lumens A04 8,000 lumens A06 10,000 lumens A09 12,000 lumens A07 14,000 lumens A08 16,000 lumens	430 80CRI 3000K 840 80CRI 4000K 780 70CRI 3000K	T15 Type 1 Short T25 Type 2 Short T45 Type 4 Short ACD Type 4 Concentrated Downlight T55 Type 5 Short	ARP Arm mount (Standard) RAM Retrofit arm mount kit WAL Wall mount	120 120V 208 208V 240 240V 277 277V 480 480V UNV 120-277V (50/60Hz) HVV 347-480V (50/60Hz)

- | | | | | |
|---|--|---|---|--|
| <p>Dimming controls</p> <p>(0-10V dimming driver standard)
DLEA[®] Dimming Leads Externally Accessible (controls by others)
FAWS[®] Field Adjustable Wattage Selector
BL30[®] Bi-level set at 50% dimming
BL30[®] Bi-level set at 30% dimming
SRR[®] SR driver connected to Zigbee
SRR[®] SR driver connected to Z-Wave
DynaDimmer[®] Automatic Profile Dimming
CS60[®] Security 50% Dimming, 7 hours
CS60[®] Median 50% Dimming, 8 hours
CS30[®] Security 30% Dimming, 7 hours
CS30[®] Median 30% Dimming, 8 hours</p> | <p>Motion sensor lens</p> <p>L2[™] PIR Sensor #2 lens
L3[™] PIR Sensor #3 lens
MW[™] Microwave HF Sensor</p> | <p>Electrical/finishing</p> <p>PCB[®] Photocontrol Button
TRP[®] 7-pin Twist Lock Receptacle
TLP[®] 7-pin Twist Lock Receptacle w/ 3-pin Photocontrol
SP2[®] Increased 20A
FB1[®] Single Fuse (220, 277, 347VAC)
FB2[®] Double Fuse (208, 240, 480VAC) rickart</p> | <p>Emergency</p> <p>EMAXX[®] Emergency battery pack</p> | <p>Finish</p> <p>Textured
BK Black
WH White
BZ Bronze
DG Dark Gray
MG Medium Gray</p> <p>Customer specified
RAL Specify optional color or RAL (see RAL7024)
CC Custom color (Must supply color chip for required factory quote)</p> |
|---|--|---|---|--|

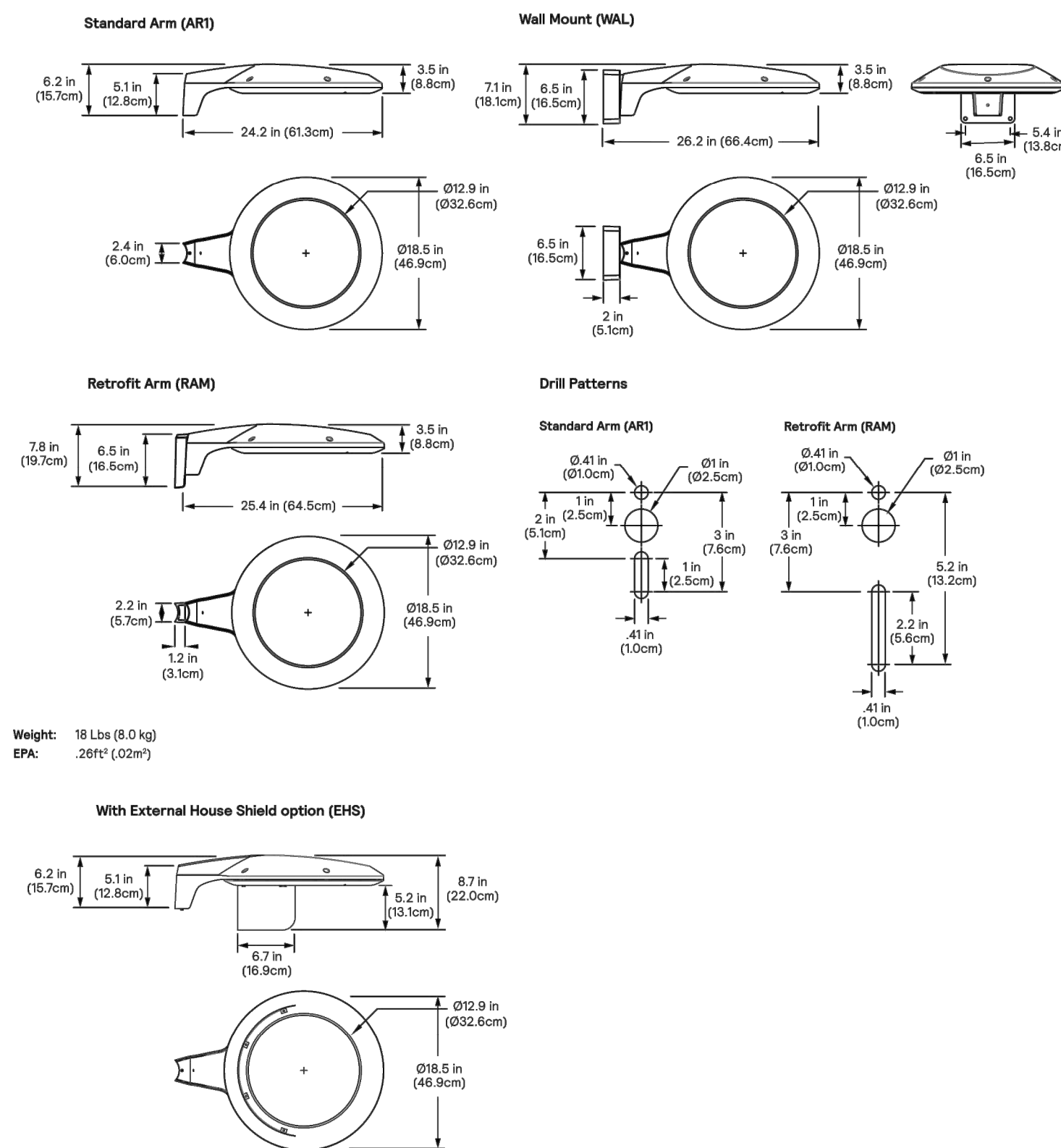
- Only available with symmetrical optics (T15 and T55).
- Extended lead times apply. Contact factory for details.
- Mounts to a 4"-6" OD round pole with adapter included for square poles.
- Not available with other dimming control options (mutually exclusive).
- Not available with motion sensor.
- BL30 must be specified with a motion sensor lens (L2 or L3).
- BL30 must be specified with Microwave HF Sensor (MW).
- Not available with photocontrol.
- Not available in 347 or 480V.
- Available only in 120 or 277V.
- Must specify input voltage.
- All 7 pins in NEMA receptacle are connected to SR driver.
- Not available in 480V. Order photocontrol separately with TRP.
- Not available with DLEA and FAWS dimming control options.
- Not available with DLEA, SRR, FAW, CS50, CM50, CS30, and CM30 dimming control options.
- Product ships standard with 10A.
- When ordering SRR with L2 or L3, controller to be used on socket must be SR compatible (See specifications for more details).



P20_PureForm_area_small_round 04/21 page 1 of 6

P20 PureForm LED small round
Area light with comfort optics

Dimensions



P20_PureForm_area_small_round 04/21 page 4 of 6



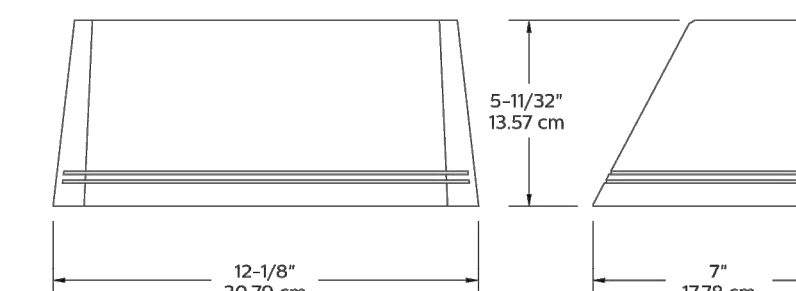
Philips Gardco 111 LED mini sconce luminaires are compact in size, perfect for low mounting height wall mount applications. 111 LED luminaires are designed to integrate naturally to wall surfaces. 111 LED luminaires are available with three (3) different distribution patterns, providing full cutoff performance (in the normal downlight position) and featuring LED arrays. Luminaires provide performance excellence and advanced Philips Gardco LED thermal management technology. High performance Class 1 LED systems offer potential energy savings of 50 % or more compared to HID systems. 111 LED luminaires are also available with 0-10V Dimming.

Project: _____
Location: _____
Cat.No: _____
Type: _____
Lamp: _____ Qty: _____
Notes: _____

Prefix	No. of LEDs	Wire Current	Color / Generation	Distribution	Voltage	Controls	Electrical/Luminaire	Finish
111L	16							
111L	Triangular Wedge LED	350 350mA 550 550mA 750 750mA	CW-G2 Cool White 5700K, 70 CRI generation 2 NW-G2 Neutral White 4000K, 70 CRI generation 2 WW-G2 Warm White 3000K, 70 CRI generation 2	2 Type II Wide Throw Optic, with maximized lateral throw 3 Type III Preferred Wide Throw Optic with improved forward throw 4 Type IV Maximized forward throw optic	UNV 120-277V 50Hz/60Hz 120 120V 208 208V 240 240V 277 277V	PCB Photocontrol Button [®] DD 0-10V Dimming	F1 Single fusing (20, 277VAC) F2 Double fusing (208, 240VAC) F3 Canadian double pull fusing (208, 240VAC) DL Diffusing Lens WS Wall Mounted Box for Surface Conduit	Textured BK Black WH White BZ Bronze DG Dark Gray MG Medium Gray Customer specified RAL Specify optional color or RAL (see RAL7024) CC Custom color (Must supply color chip for required factory quote)

- Provide specific input voltage.

Dimensions



Note: Mounting plate center is located in the center of the luminaire width and 2.38" (6.03cm) above the luminaire bottom (lens down position). Splices must be made in the J-box (by others). Mounting plate must be secured by max. 1/4" (6.4cm) diameter bolts (by others) structurally to the wall.

10-111_LED_Spec_Sheet 05/19 page 1 of 2



PREPARED FOR CENTURY COMMUNITIES



PROJECT

COMPARK VILLAGE SOUTH

TOWN OF PARKER, COUNTY OF DOUGLAS, COLORADO 80134

SHEET TITLE
LIGHT FIXTURE SPEC SHEETS

SHEET NUMBER
53

SITE LIGHT FIXTURE 'SB'

SITE LIGHT FIXTURE 'SB'

SITE LIGHT FIXTURE 'SD'

SITE LIGHT FIXTURE SCHEDULE					
TYPE	SERVES	DESCRIPTION	MANUFACTURER CATALOG NO.	LAMPS	NOTES
SA1	SITE	POLE MOUNTED FIXTURE	GARDCO_ECF-S-32L-530-WW-G2-LCL	55 W	20'
SA2	SITE	POLE MOUNTED FIXTURE	GARDCO_ECF-S-32L-530-WW-G2-RCL	55 W	20'
SA3	SITE	POLE MOUNTED FIXTURE	GARDCO_ECF-S-32L-530-WW-G2-2-HIS	56 W	20'
SA4	SITE	POLE MOUNTED FIXTURE	GARDCO_ECF-S-32L-530-WW-G2-3-HIS	56 W	20'
SB	SITE	POLE MOUNTED FIXTURE	GARDCO_P20-C-A01-830-T2S-EHS	21 W	10'
SC	SITE	POLE MOUNTED FIXTURE	GARDCO_ECF-S-32L-700-WW-G2-4-HIS	73 W	10'
SD	SITE	WALL SCONCE	GARDCO_111L-16L-350-NW-G2-4	18 W	10'

REFER TO SITE PLAN SYMBOLS AND LIGHTING TAGS FOR LIGHT FIXTURE MOUNTING AND NUMBER OF FIXTURES PER POLE