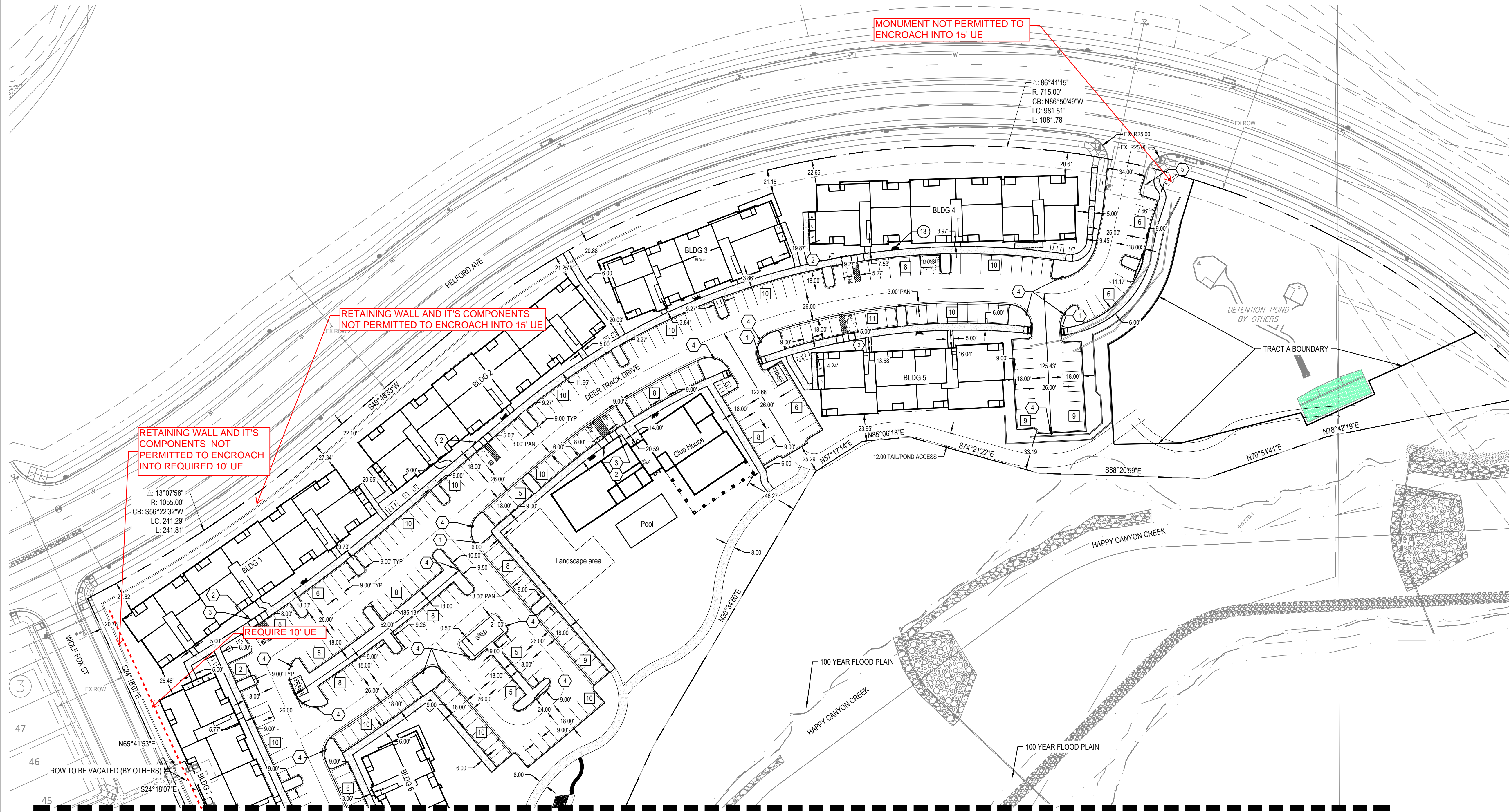
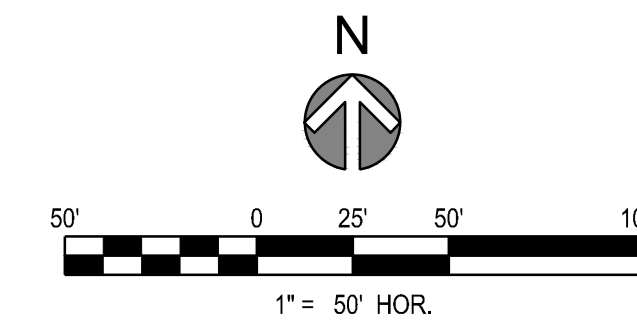


COMPARK VILLAGE SOUTH
F1 AMD 2 - MULTIFAMILY
SITE PLAN

LOT 2, COMPARK VILLAGE FILING NO. 1, AMEND NO. 2
SOUTH HALF SECTION 6, TOWNSHIP 6 SOUTH, RANGE 66 WEST OF THE 6TH PRINCIPAL MERIDIAN
TOWN OF PARKER, COUNTY OF DOUGLAS, STATE OF COLORADO



MATCH LINE SEE SHEET 4

LEGEND / KEYNOTES

- PARKING SPACE COUNT
- PROPERTY LINE
- SIGN
- R1-1 (30' x 30')
- R7-8 (12' x 18')
- R7-8 P (12' x 9')
- R7-1 (SP) (12' x 18')
- R2-1 (SP) (12' x 18')
- PAVEMENT MARKING OF INTERNATIONAL SYMBOL OF ACCESSIBILITY



PROJECT
COMPARK VILLAGE SOUTH
TOWN OF PARKER, COUNTY OF DOUGLAS, COLORADO 80134

- NOTES
- DIMENSIONS ARE TO FLOWLINE UNLESS OTHERWISE NOTED.

SHEET TITLE
SITE PLAN

SHEET NUMBER
3

PROJECT NUMBER
65120950

DRAWN BY
TV

DATE
01/12/2022

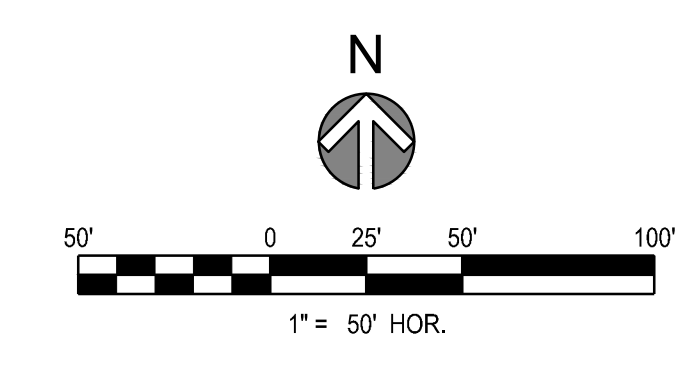
COMPARK VILLAGE SOUTH
F1 AMD 2 - MULTIFAMILY
SITE PLAN

LOT 2, COMPARK VILLAGE FILING NO. 1, AMEND NO. 2
SOUTH HALF SECTION 6, TOWNSHIP 6 SOUTH, RANGE 66 WEST OF THE 6TH PRINCIPAL MERIDIAN
TOWN OF PARKER, COUNTY OF DOUGLAS, STATE OF COLORADO

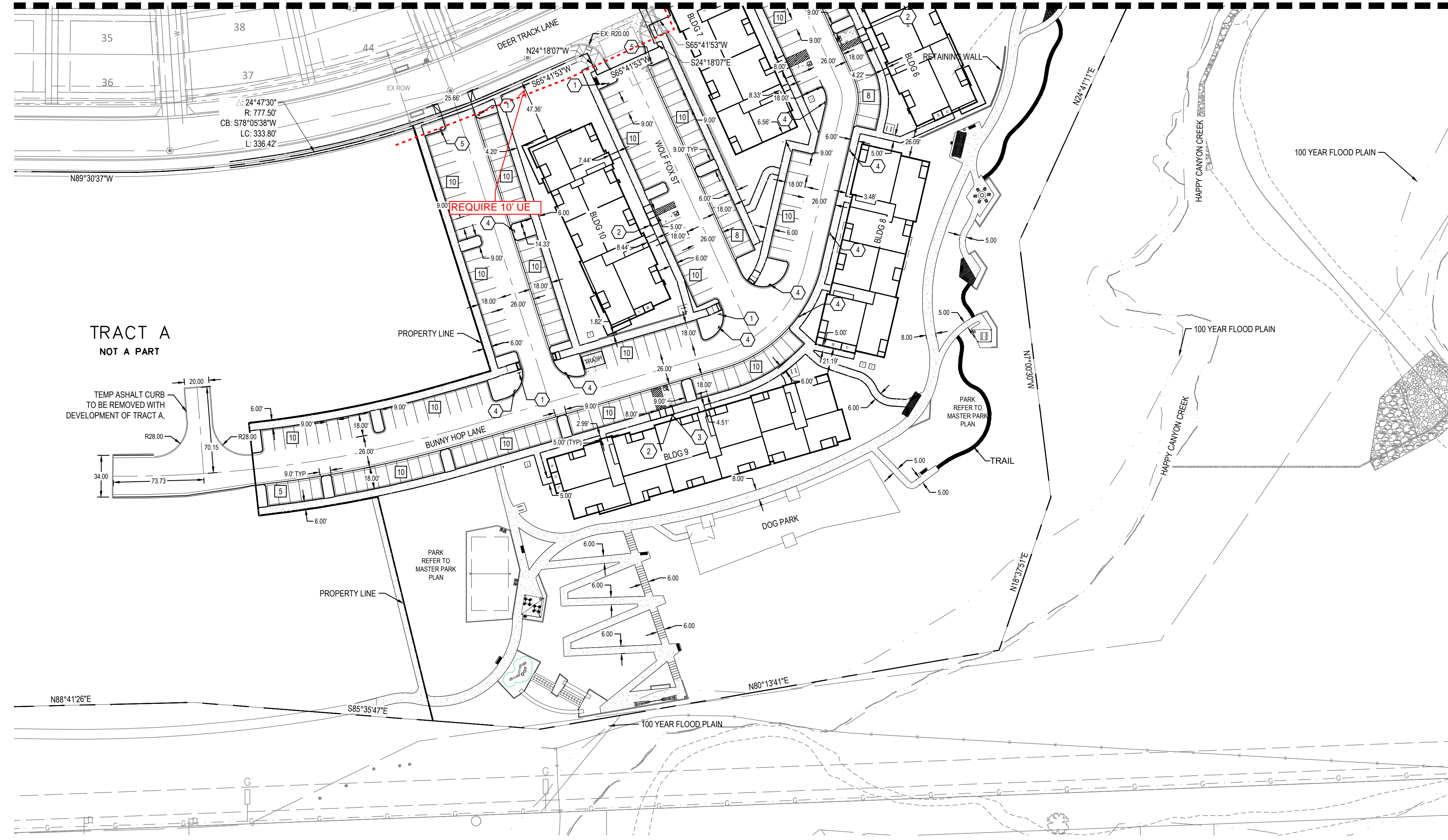
PROJECT NUMBER
65120950

DRAWN BY
TV

DATE
01/12/2022



MATCH LINE SEE SHEET 3



LEGEND / KEYNOTES

- PARKING SPACE COUNT
 - PROPERTY LINE
 - SIGN
 - ① R1-1 (30' x 30')
 - ② R7-8 (12' x 18')
 - ③ R7-8 P (12' x 9')
 - ④ R7-1 (SP) (12' x 18')
 - ⑤ R2-1 (SP) (12' x 18')
- PAVEMENT MARKING OF INTERNATIONAL SYMBOL OF ACCESSIBILITY

NOTES

1. DIMENSIONS ARE TO FLOWLINE UNLESS OTHERWISE NOTED.



PREPARED FOR CENTURY COMMUNITIES



PROJECT
COMPARK VILLAGE SOUTH

TOWN OF PARKER, COUNTY OF DOUGLAS, COLORADO 80134

SHEET TITLE
SITE PLAN

SHEET NUMBER
4

TRACT A
NOT A PART

TEMP ASHALT CURB TO BE REMOVED WITH DEVELOPMENT OF TRACT A.

PROPERTY LINE

PROPERTY LINE

PARK REFER TO MASTER PARK PLAN

DOG PARK

TRAIL

PARK REFER TO MASTER PARK PLAN

100 YEAR FLOOD PLAIN

100 YEAR FLOOD PLAIN

100 YEAR FLOOD PLAIN

100 YEAR FLOOD PLAIN

COMPARK VILLAGE SOUTH
F1 AMD 2 - MULTIFAMILY
SITE PLAN

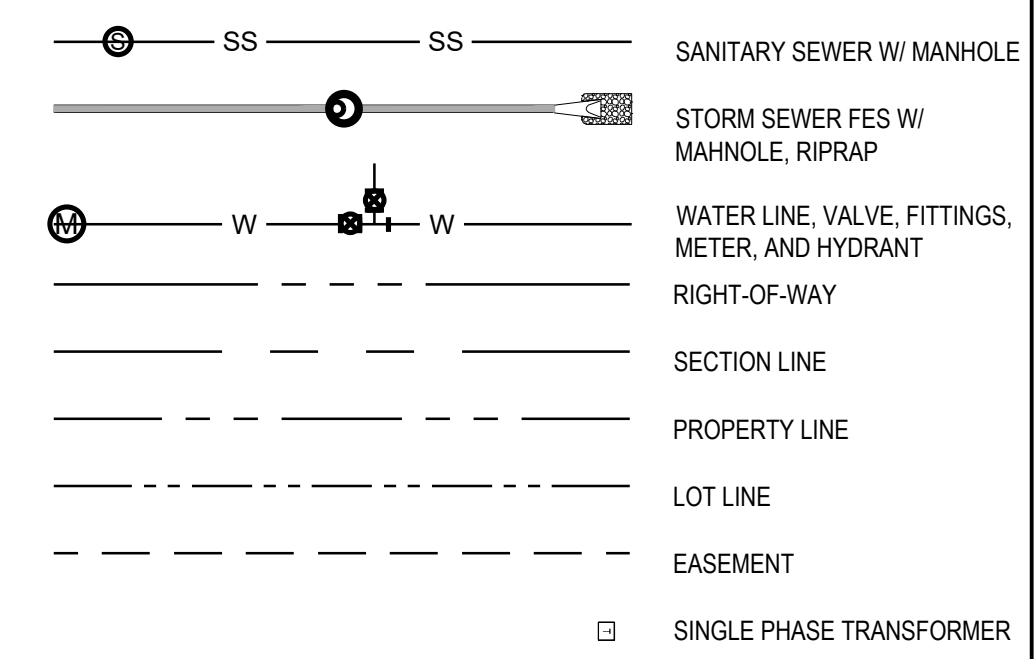
LOT 2, COMPARK VILLAGE FILING NO. 1, AMEND NO. 2
SOUTH HALF SECTION 6, TOWNSHIP 6 SOUTH, RANGE 66 WEST OF THE 6TH PRINCIPAL MERIDIAN
TOWN OF PARKER, COUNTY OF DOUGLAS, STATE OF COLORADO

PROJECT NUMBER
65120950

DRAWN BY
TV

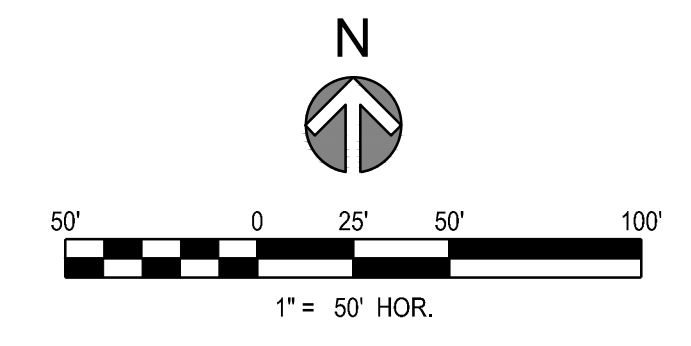
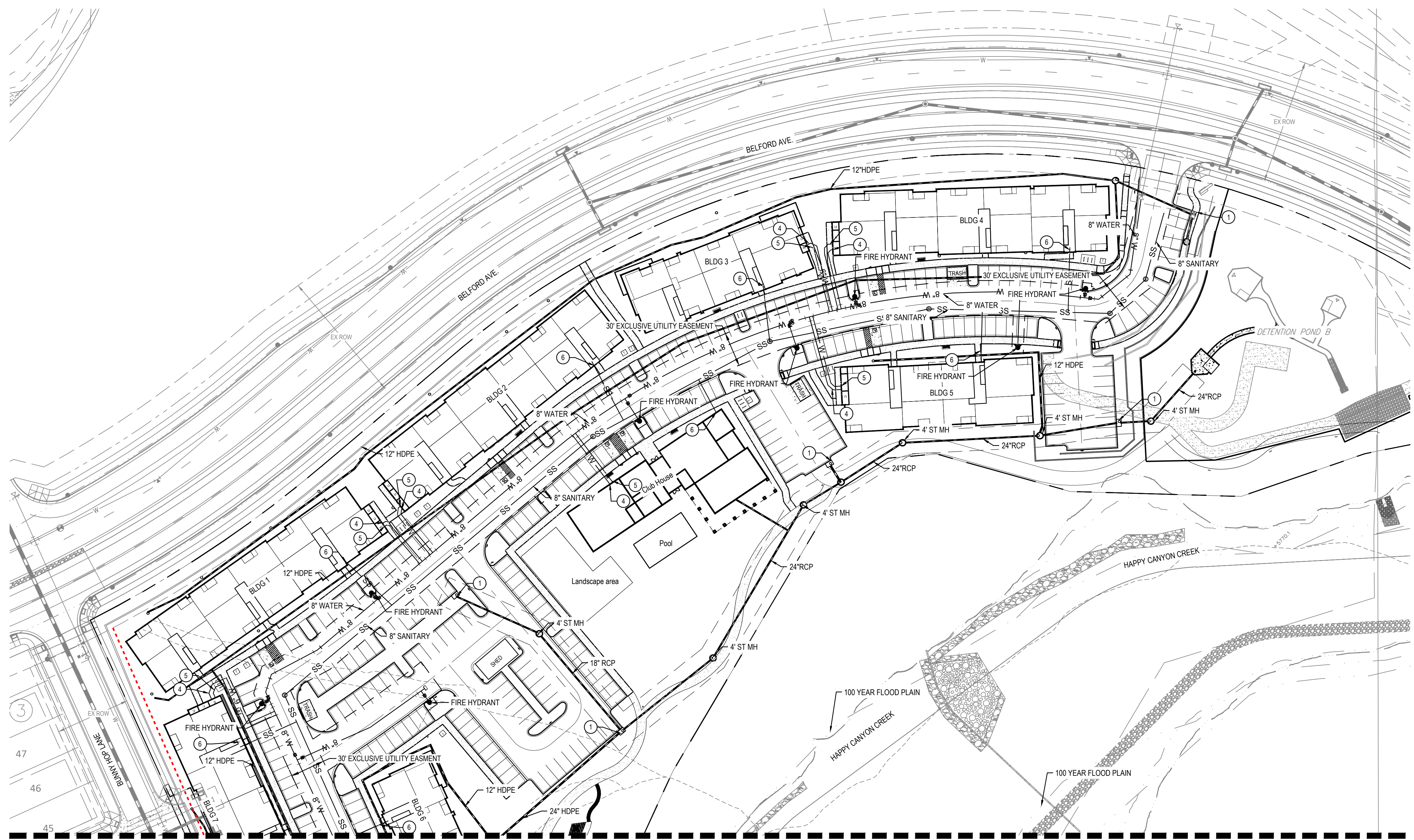
DATE
01/12/2022

LEGEND



KEYNOTES

- ① 5' TYPE R INLET
- ② 10' TYPE R INLET
- ③ DOUBLE COMBO INLET TYPE 13
- ④ 2" DOMESTIC WATER SERVICE
- ⑤ 6" FIRE WATER SERVICE
- ⑥ 6" SANITARY SERVICE



MATCH LINE SEE SHEET 7

MERRICK
Engineering | Architecture | Design-Build | Surveying |
Planning | Geospatial Solutions
5970 GREENWOOD PLAZA BLVD.
GREENWOOD VILLAGE, CO. 80111
303-751-0741
www.merrick.com

PREPARED FOR CENTURY COMMUNITIES



PROJECT
COMPARK VILLAGE SOUTH

TOWN OF PARKER, COUNTY OF DOUGLAS, COLORADO 80134

SHEET TITLE
UTILITY PLAN

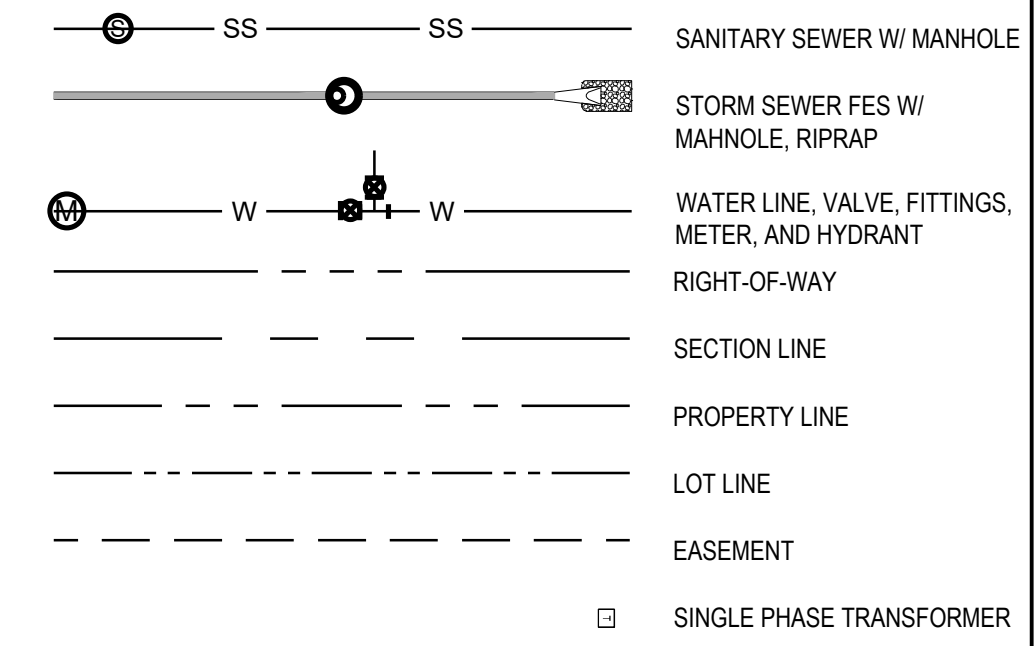
SHEET NUMBER
6

COMPARK VILLAGE SOUTH
F1 AMD 2 - MULTIFAMILY
SITE PLAN

LOT 2, COMPARK VILLAGE FILING NO. 1, AMEND NO. 2
SOUTH HALF SECTION 6, TOWNSHIP 6 SOUTH, RANGE 66 WEST OF THE 6TH PRINCIPAL MERIDIAN
TOWN OF PARKER, COUNTY OF DOUGLAS, STATE OF COLORADO

PROJECT NUMBER
65120950
DRAWN BY
TV
DATE
01/12/2022

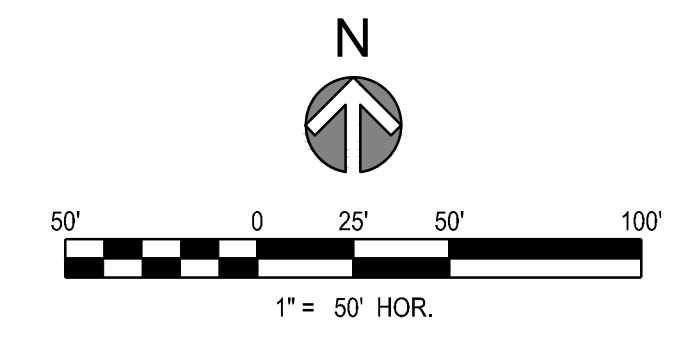
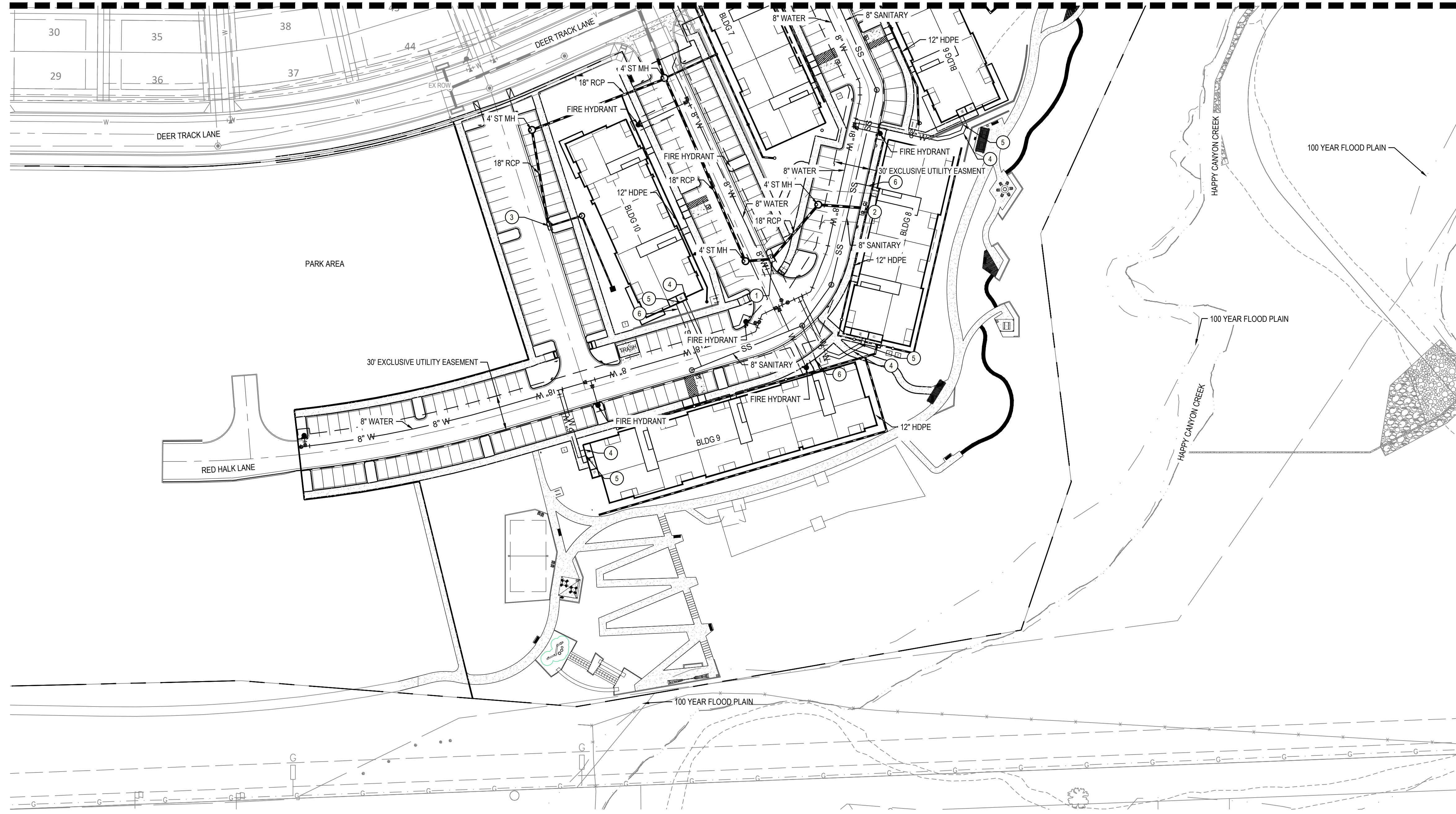
LEGEND



KEYNOTES

- 1 5' TYPE R INLET
- 2 10' TYPE R INLET
- 3 DOUBLE COMBO INLET TYPE 13
- 4 2" DOMESTIC WATER SERVICE
- 5 6" FIRE WATER SERVICE
- 6 6" SANITARY SERVICE

MATCH LINE SEE SHEET 6



PREPARED FOR CENTURY COMMUNITIES



PROJECT
COMPARK VILLAGE SOUTH

TOWN OF PARKER, COUNTY OF DOUGLAS, COLORADO 80134

SHEET TITLE
UTILITY PLAN

SHEET NUMBER
7

COMPARK VILLAGE SOUTH
F1 AMD 2 - MULTIFAMILY
SITE PLAN

LOT 2, COMPARK VILLAGE FILING NO. 1, AMEND NO. 2
SOUTH HALF SECTION 6, TOWNSHIP 6 SOUTH, RANGE 66 WEST OF THE 6TH PRINCIPAL MERIDIAN
TOWN OF PARKER, COUNTY OF DOUGLAS, STATE OF COLORADO

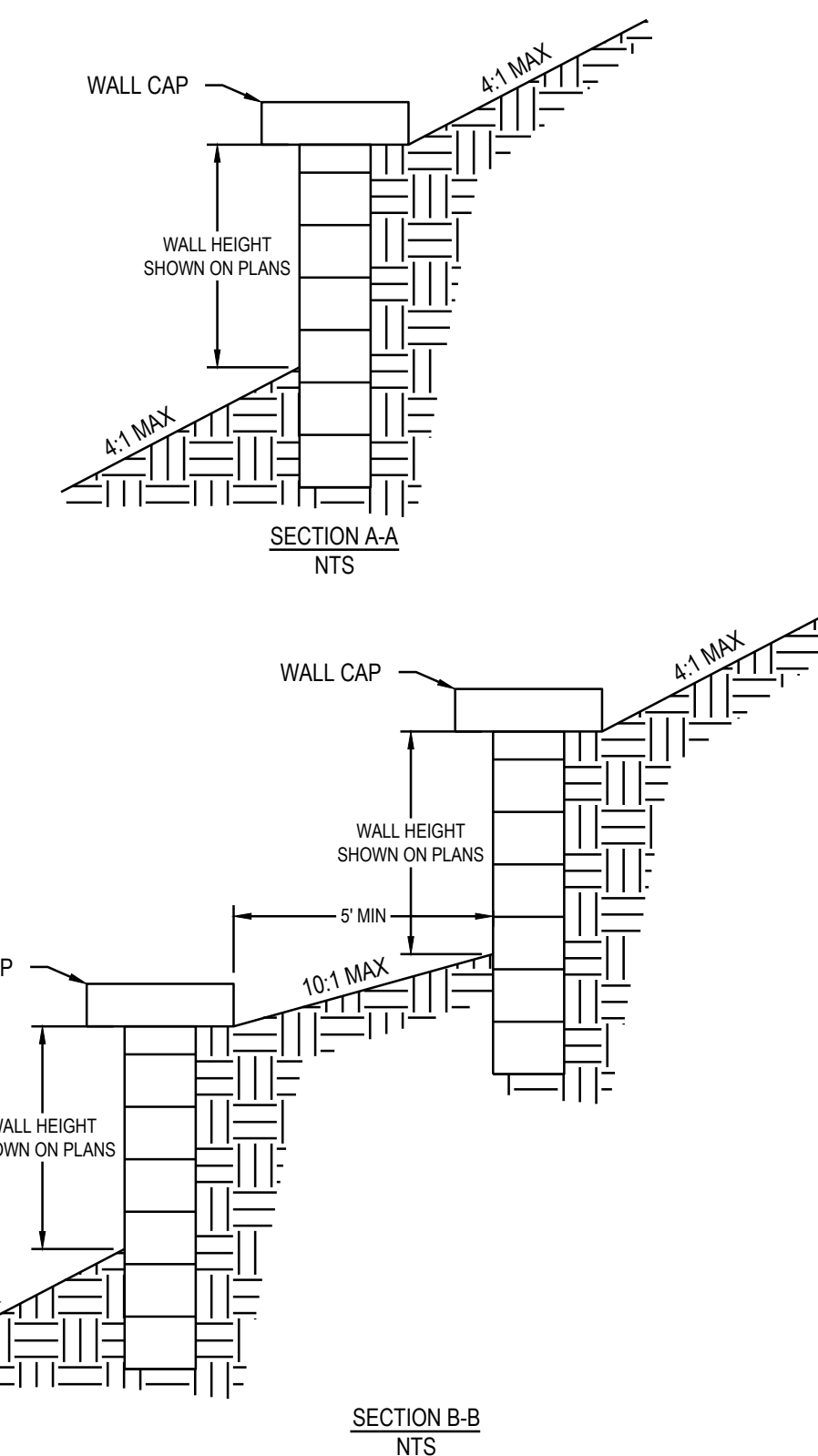
LEGEND	
	RIGHT-OF-WAY
	SECTION LINE
	PROPERTY LINE
	LOT LINE
	LIMITS OF DISTURBANCE

PROJECT NUMBER
65120950
DRAWN BY
TV
DATE
01/12/2022

NOTES:

- RETAINING WALL HEIGHTS SHOWN REPRESENT EXPOSED FACE OF WALL (EXCLUDING CAP). RETAINING WALLS GREATER THAN 4-FT IN HEIGHT FROM BOTTOM COURSE (OR BASE OF FOOTING) REQUIRE SEPARATE BUILDING PERMITS. WALL PLANS MUST BE STAMPED BY A QUALIFIED ENGINEER COLORADO REGISTERED PROFESSIONAL ENGINEER.
- RETAINING WALLS TO BE SPLIT FACE MASONRY MATERIAL, TAN OR EARTH TONE COLOR.

WALL SECTIONS



PREPARED FOR CENTURY COMMUNITIES



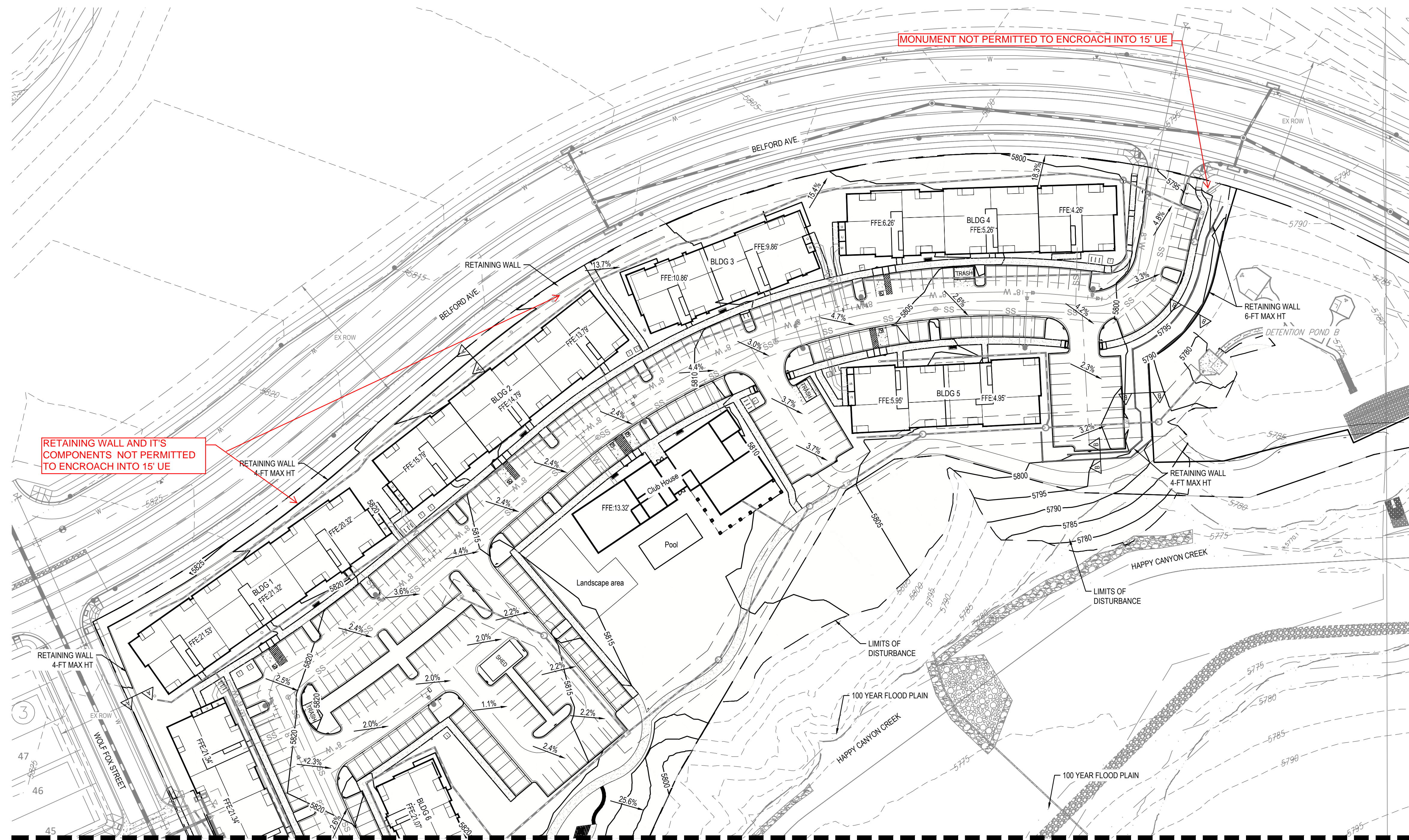
PROJECT

COMPARK VILLAGE SOUTH

TOWN OF PARKER, COUNTY OF DOUGLAS, COLORADO 80134

SHEET TITLE
GRADING PLAN

SHEET NUMBER
8



MATCH LINE SEE SHEET 8

