

**1** FLOOR PLAN  
SCALE: 1/4" = 1'-0"

# PROPOSED MAVERIK C-STORE

Prototype Version: 50\_L\_RR\_2102  
 Building Square Footage: 5,637 SF  
 Construction Type/Occupancy Classification: V-B / M

A-1 | FLOOR PLAN







2 BUILDING PERSPECTIVE  
SCALE:



1 BUILDING PERSPECTIVE  
SCALE:

PROPOSED MAVERIK C-STORE

Prototype Version: 50\_L\_RR\_2102  
 Building Square Footage: 5,637 SF  
 Construction Type/Occupancy Classification: V-B / M

A-3 | PERSPECTIVE VIEWS



**KEYED NOTES**

- 04.05 CULTURED STONE VENEER, SKYLINE, COUNTRY LEDGESTONE
- 04.06 CULTURED STONE VENEER CAP, SKYLINE, COUNTRY LEDGESTONE
- 04.08 SPLIT-FACE CMU BLOCK, COLOR: CANVAS, 8'-0" HIGH WITH CONCRETE CAP
- 04.10 SPLIT FACE CAP
- 05.01 PRE-FINISHED GUTTER AND DOWNSPOUT, BRITE RED
- 05.03 PAINTED STEEL, BLACK FOX
- 05.06 MBCI PRE-FINISHED METAL ROOF, 1 3/4" STANDING SEAM, MIDNIGHT BRONZE
- 05.21 PRE-FINISHED METAL COPING, COLOR C-1
- 05.69 STEEL AWNING, COLOR P-9
- 06.04 FIBER CEMENT BOARD & BATTEN SIDING, BB-2
- 06.05 FIBER CEMENT BOARD & BATTEN SIDING, BB-1
- 06.06 FIBER CEMENT TRIM BB-3
- 08.02 ALUMINUM STOREFRONT SYSTEM, DARK BRONZE
- 08.04 HOLLOW METAL DOOR AND FRAME, PAINTED AGED PEWTER
- 08.05 WINDOW, SEE SCHEDULE
- 10.01 ROOF ACCESS LADDER W/ SECURITY GATE, SEE DETAIL 1/AS.11. POWDER COATED COLOR TO MATCH SIDING BB-1



**2 LEFT ELEVATION**  
SCALE: 1/4" = 1'-0"



**1 FRONT ELEVATION**  
SCALE: 1/4" = 1'-0"

**PROPOSED MAVERIK C-STORE**

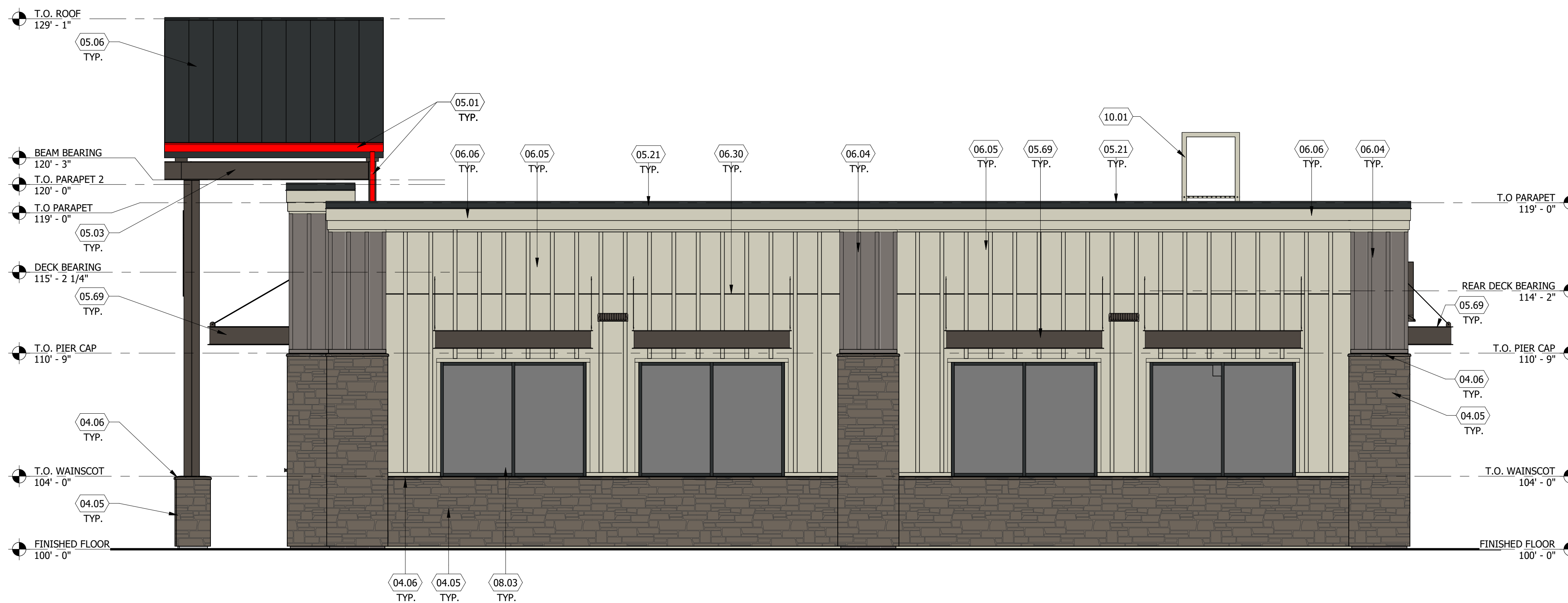
Prototype Version: 50\_L\_RR\_2102  
 Building Square Footage: 5,637 SF  
 Construction Type/Occupancy Classification: V-B / M

A-4 | EXTERIOR ELEVATIONS

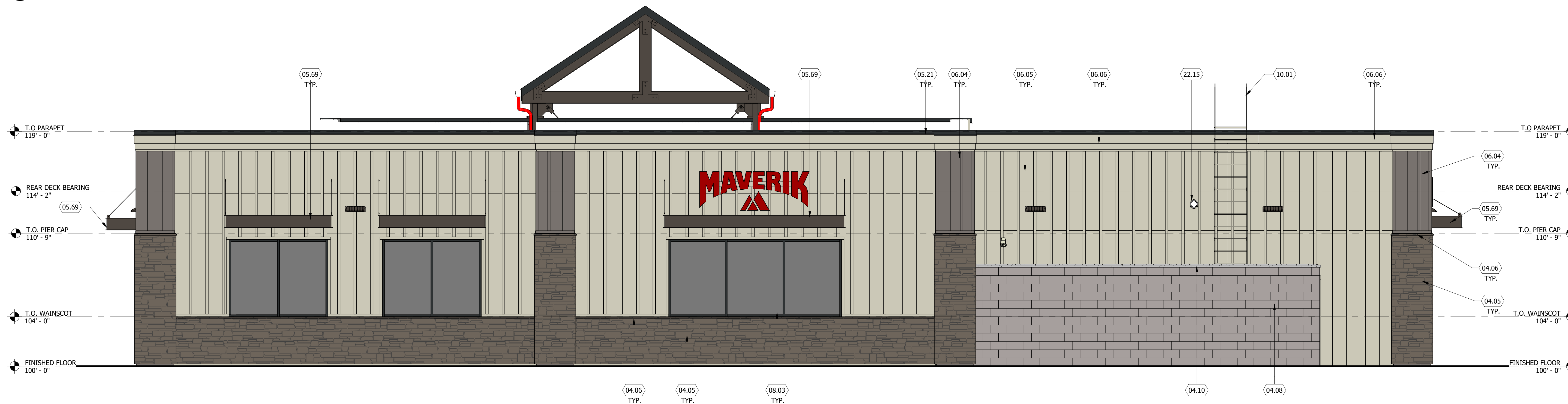


**KEYED NOTES**

- 04.05 CULTURED STONE VENEER, SKYLINE, COUNTRY LEDGESTONE
- 04.06 CULTURED STONE VENEER CAP, SKYLINE, COUNTRY LEDGESTONE
- 04.08 SPLIT-FACE CMU BLOCK, COLOR: CANVAS, 8'-0" HIGH WITH CONCRETE CAP
- 04.10 SPLIT FACE CAP
- 05.01 PRE-FINISHED GUTTER AND DOWNSPOUT, BRITTE RED
- 05.03 PAINTED STEEL, BLACK FOX
- 05.06 MBCI PRE-FINISHED METAL ROOF, 1 3/4" STANDING SEAM, MIDNIGHT BRONZE
- 05.21 PRE-FINISHED METAL COPING, COLOR C-1
- 05.69 STEEL AWNING, COLOR P-9
- 06.04 FIBER CEMENT BOARD & BATTEN SIDING, BB-2
- 06.05 FIBER CEMENT BOARD & BATTEN SIDING, BB-1
- 06.06 FIBER CEMENT TRIM BB-3
- 06.30 HORIZONTAL JOINT IN SIDING
- 08.03 ALUMINUM STOREFRONT SYSTEM (AST-1), SEE SCHEDULE ON SHEET A6.03
- 10.01 ROOF ACCESS LADDER W/ SECURITY GATE, SEE DETAIL 1/AS.11. POWDER COATED COLOR TO MATCH SIDING BB-1
- 22.15 ROOF OVERFLOW DRAIN SCUPPER, SEE PLUMBING DRAWINGS



**2 RIGHT ELEVATION**  
SCALE: 1/4" = 1'-0"



**1 REAR ELEVATION**  
SCALE: 1/4" = 1'-0"

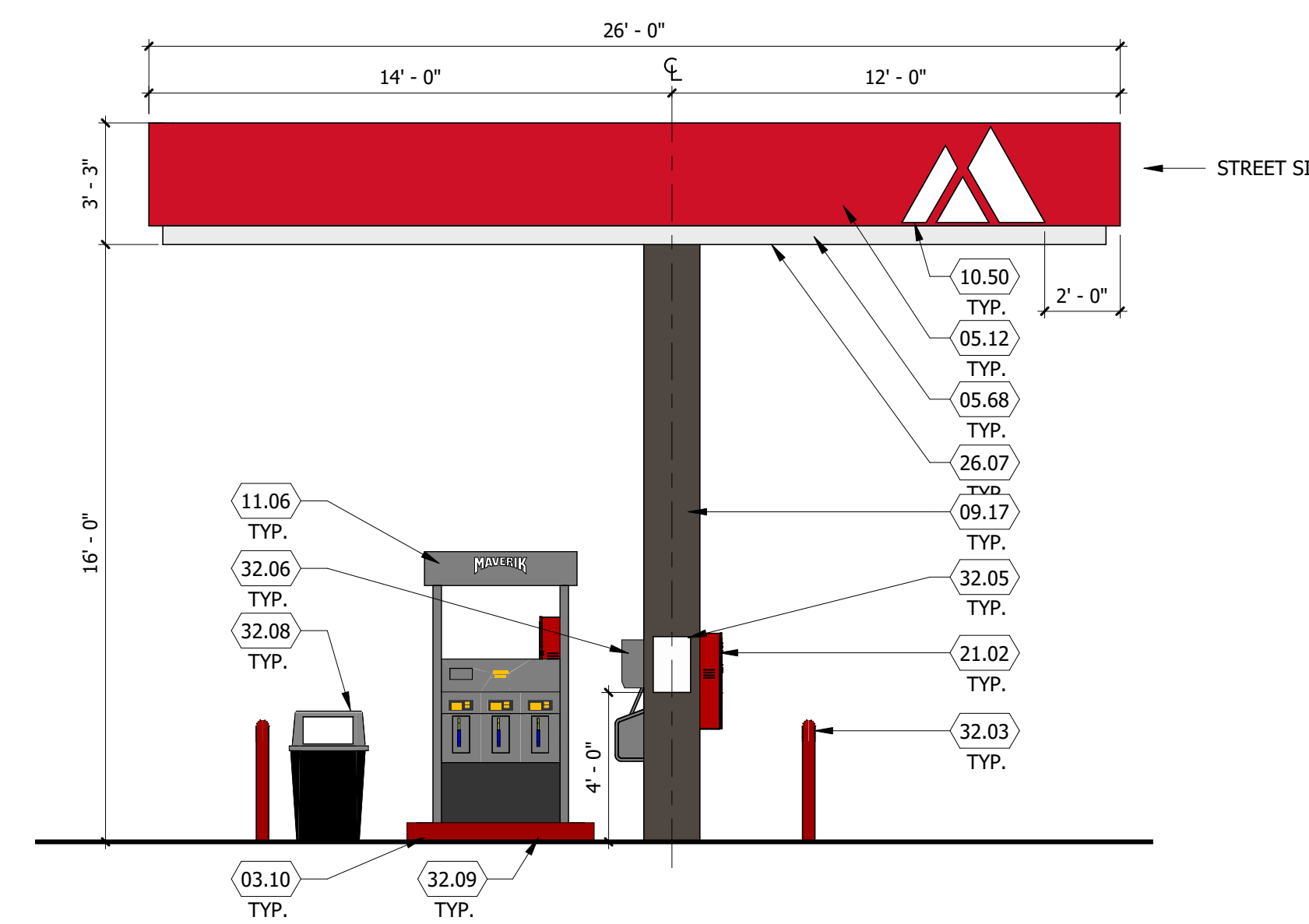
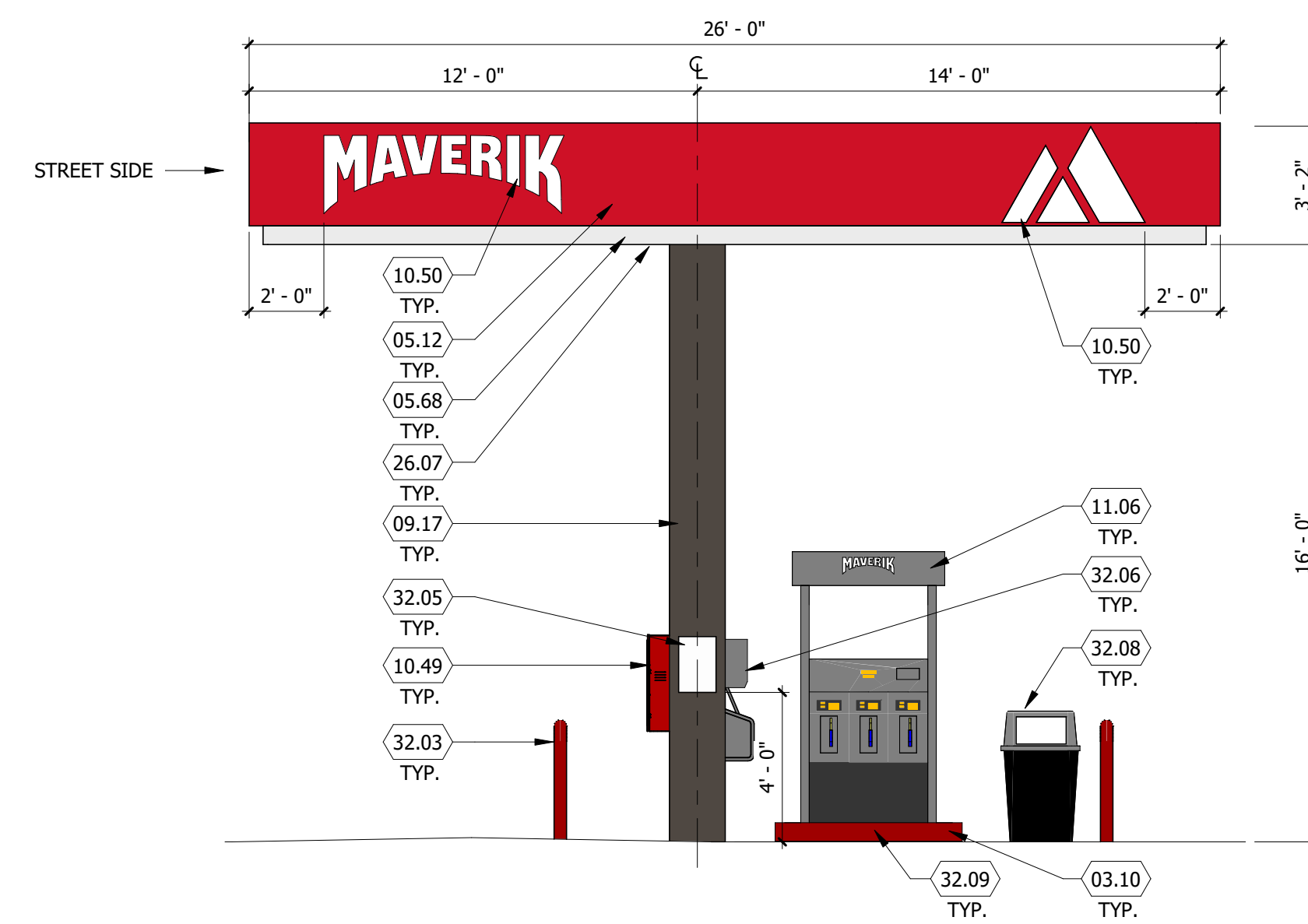
**PROPOSED MAVERIK C-STORE**

Prototype Version: 50\_L\_RR\_2102  
 Building Square Footage: 5,637 SF  
 Construction Type/Occupancy Classification: V-B / M

A-5 | EXTERIOR ELEVATIONS

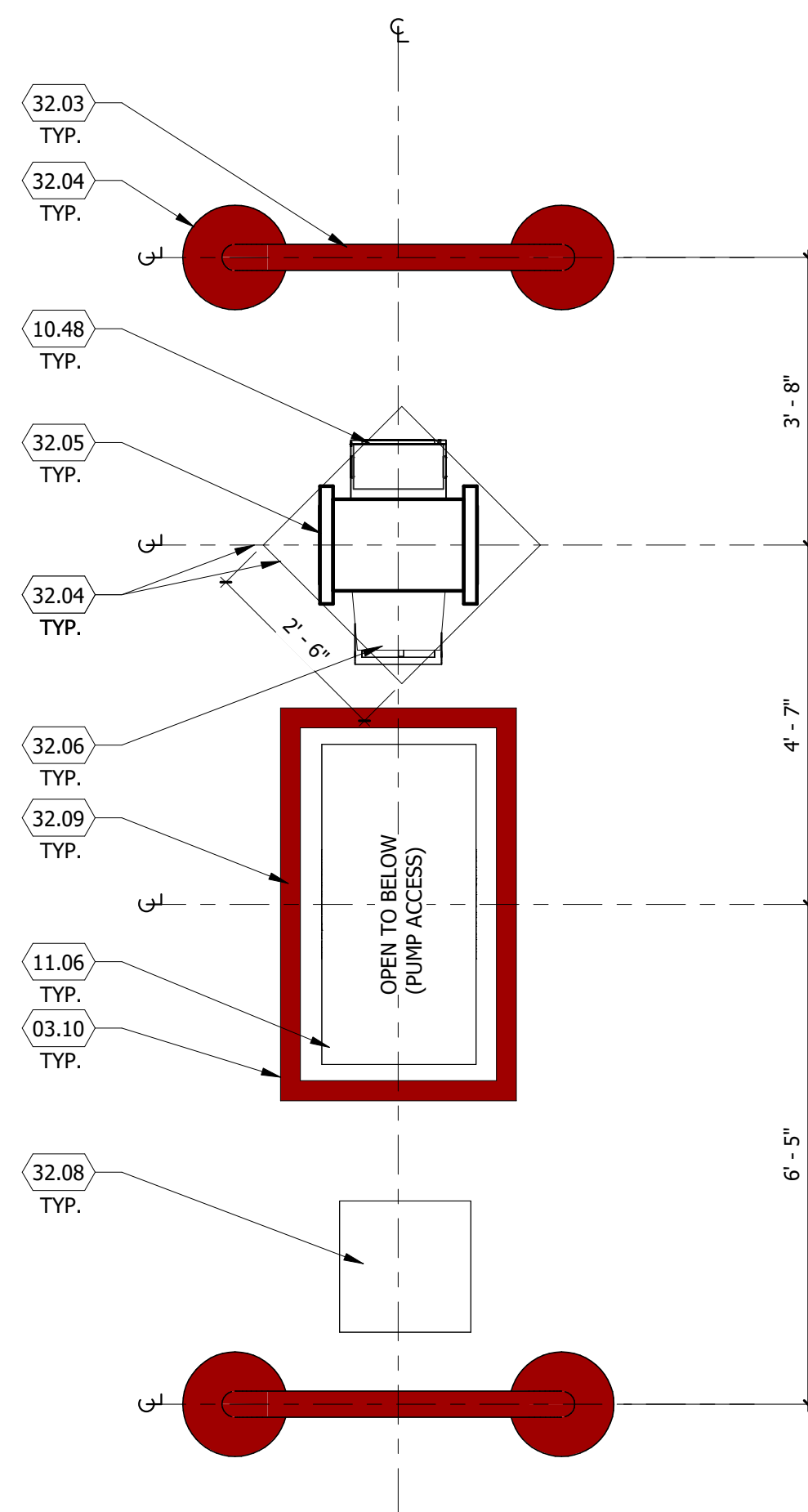
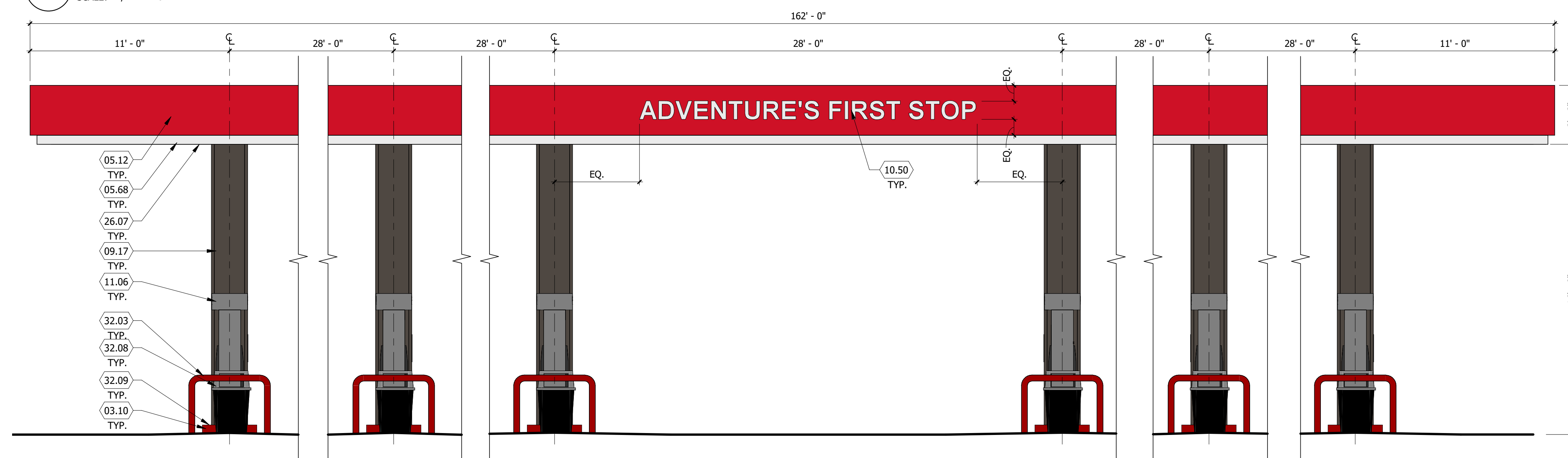
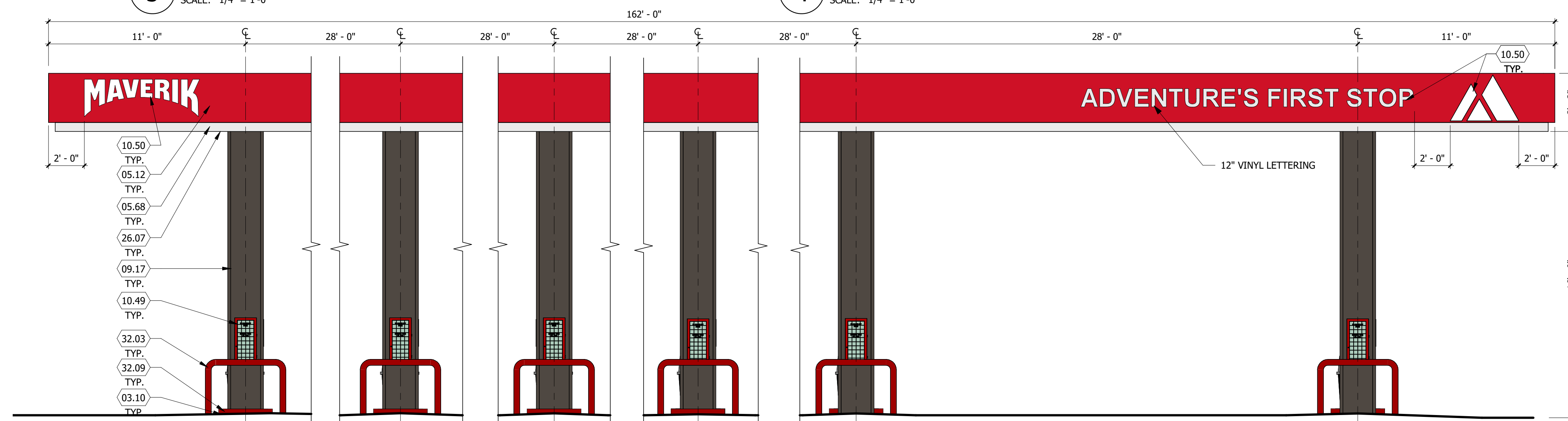


185 S. State Street  
 Salt Lake City, Utah 84111



**KEYED NOTES**

- 03.10 6" MIN. RAISED CONCRETE ISLAND W/ TOOLED EDGES AND CORNERS. VERIFY SIZE W/ DISPENSER SUPPLIER +/- 5'-0" X 3'-0" (NO METAL FORM). ACCESSIBLE ISLAND TO BE 6"; SEE CIVIL DRAWINGS FOR LOCATION
- 05.12 ALUMINUM COMPOSITE METAL PANEL, EASTMAN RED
- 05.68 ALUMINUM COMPOSITE METAL PANEL, WHITE
- 09.17 PANEL COLUMN CLADDING, COLOR TO MATCH P-9
- 10.48 PROVIDE WALK PAD UNDER DOWNSPOUT LOCATION
- 10.49 4A-40 BC FIRE EXTINGUISHER W/ CASE, LOCATE WITHIN 75' OF ALL PUMPS, DISPENSERS, OR STORAGE TANK. LOCATION TO BE FINALIZED BY FIRE MARSHAL
- 10.50 SIGNAGE TO BE COORDINATED BY FUEL CANOPY CONTRACTOR WITH OWNER
- 11.06 DISPENSING STATION (BY OTHERS)
- 21.02 SURFACE MOUNTED FIRE EXTINGUISHER AND CABINET, PROVIDE 1 EXTINGUISHER FOR EVERY 2 COLUMNS
- 26.07 ALL LIGHT FIXTURES (NOT SHOWN) TO BE FLUSH MOUNTED WITHIN THE DECK PANEL SOFFIT (SOFFIT COLOR P-7). SEE ELECTRICAL AND FUEL DISPENSING DRAWINGS
- 32.03 4" DIAMETER "U" BOLLARD, SET AND FILLED W/ CONCRETE, SEE CIVIL DRAWINGS. PAINTED P-4
- 32.04 EXPANSION JOINTS, TO BE FILLED W/ "JET FUEL RESISTANT" SEALANT, SEE CIVIL DRAWINGS
- 32.05 SIGNAGE, BY OWNER, TO COMPLY WITH IFC 2305.6 AND POSTED ON EACH SIDE OF COLUMN
- 32.06 S.S.I. (WINDOW WASH/PAPER TOWEL) PROVIDED BY OWNER INSTALLED BY CONTRACTOR, MOUNTED TO COLUMN PER ADA REQUIREMENTS (4'-0" MAX A.F.F. TO PAPER TOWEL FOLD)
- 32.08 TRASH CONTAINER, PROVIDED BY OWNER
- 32.09 PAINT CONCRETE CURB EDGE P-4, SEE SCHEDULE ON SHEET A6.03



PROPOSED MAVERIK C-STORE

**NOTE:**  
FUEL CANOPY DRAWINGS PROVIDED ARE CONCEPTUAL, AND MAY VARY FROM SITE TO SITE.

Prototype Version: 50\_L\_RR\_2102  
Building Square Footage: 5,637 SF  
Construction Type/Occupancy Classification: V-B / M





BB-1 Fiberboard -  
Worldly Gray

BB-2 Fiberboard -  
Gauntlet Gray

BB-3 Fiberboard -  
Worldly Gray



Cultured Stone - Skyline, Country LedgeStone



C-1 MBCI Midnight Bronze



C-2 MBCI Brite Red



Anodized - Dark Bronze



Paint - Black Fox

PROPOSED MAVERIK C-STORE

Prototype Version: 50\_L\_RR\_2102  
 Building Square Footage: 5,637 SF  
 Construction Type/Occupancy Classification: V-B / M

A-7 | EXTERIOR MATERIALS BOARD