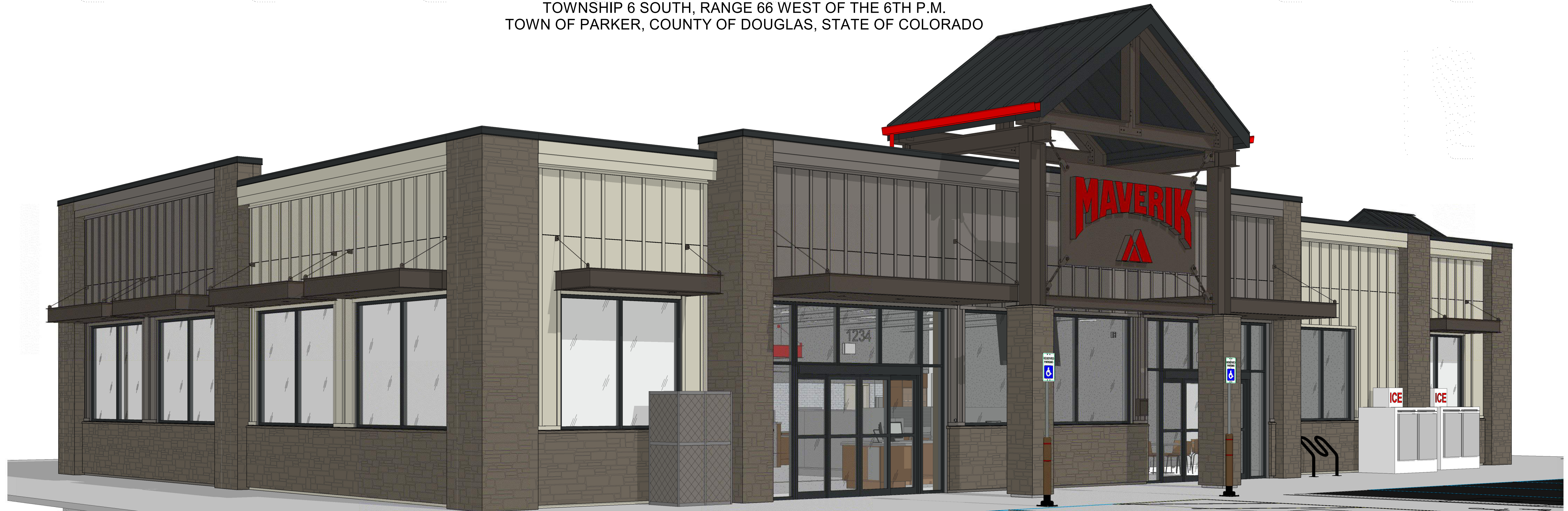


**LINCOLN PROFESSIONAL PARK FILING NO. 1 LOT 1
MAVERIK INC. STORE SITE PLAN**

SITUATED IN THE NORTHWEST OF SECTION 15,
TOWNSHIP 6 SOUTH, RANGE 66 WEST OF THE 6TH P.M.
TOWN OF PARKER, COUNTY OF DOUGLAS, STATE OF COLORADO



2 SOUTHEAST BUILDING PERSPECTIVE
SCALE:



1 NORTHWEST BUILDING PERSPECTIVE
SCALE:

PROJECT NUMBER

21-122-0001

ISSUE DATE:

March 10, 2022

REVISIONS:

No. Date Description

NOTE:
Bid documents should not be separated or issued as partial sets to subcontractors. Bidders are responsible for all portions of the documents that pertain to work covered by sub-bids. Bidder assumes full responsibility for error or misinterpretations resulting from partial sets of Bidding Documents by itself or any sub-bidder.

Conflicting information or errors found in the construction documents should be brought to the attention of the architect immediately. In the event of a conflict in the drawings, bidder should not assume the least expensive option will meet the project requirements.



185 S. State Street
Salt Lake City, Utah 84111

**MAVERIK INC. STORE
PARKER, COLORADO**

EDCI
ENGINEERS
1331 17TH STREET SUITE 605
DENVER, COLORADO 80202
PHONE: (720) 439-4700
WEBSITE: www.edci-engineers.com
CIVIL / STRUCTURAL

**PERSPECTIVE
VIEWS**

LINCOLN PROFESSIONAL PARK FILING NO. 1 LOT 1 MAVERIK INC. STORE SITE PLAN

SITUATED IN THE NORTHWEST OF SECTION 15,
TOWNSHIP 6 SOUTH, RANGE 66 WEST OF THE 6TH P.M.
TOWN OF PARKER, COUNTY OF DOUGLAS, STATE OF COLORADO

KEYED NOTES

- 04.05 NATURAL STONE
- 05.01 PRE-FINISHED GUTTER AND DOWNSPOUT, BRITE RED, C-2
- 05.03 STEEL, PAINTED, SHERWIN WILLIAMS SW 7020 - BLACK FOX
- 05.06 MCCI PRE-FINISHED METAL ROOF, 1 3/4" STANDING SEAM, MIDNIGHT BRONZE, C-1
- 05.69 STEEL AWNING, COLOR SHERWIN WILLIAMS SW 7020 - BLACK FOX
- 06.04 FIBER CEMENT BOARD & BATTEN SIDING, PAINTED, SHERWIN WILLIAMS SW 7019 - GAUNTLET GRAY, BB-2
- 06.05 FIBER CEMENT BOARD & BATTEN SIDING, PAINTED, SHERWIN WILLIAMS SW 7043 - WORLDLY GRAY, BB-1
- 06.06 FIBER CEMENT TRIM, PAINTED, SHERWIN WILLIAMS SW 7043 - WORLDLY GRAY
- 06.30 HORIZONTAL JOINT IN SIDING
- 08.02 ALUMINUM STOREFRONT SYSTEM, DARK BRONZE
- 08.04 HOLLOW METAL DOOR AND FRAME, PAINTED AGED PEWTER
- 08.26 STOREFRONT SYSTEM WITH CLEAR GLAZING
- 26.10 MAIN DISTRIBUTION PANEL, PAINTED TO MATCH BUILDING

PROJECT NUMBER

21-122-0001

ISSUE DATE:

March 10, 2022

REVISIONS:

No. Date Description

NOTE:
Bid documents should not be separated or issued as partial sets to subcontractors. bidders are responsible for all portions of the documents that pertain to work covered by sub-bids. Bidder assumes full responsibility for error or misinterpretations resulting from partial sets of Bidding Documents by itself or any sub-bidder.

Conflicting information or errors found in the construction documents should be brought to the attention of the architect immediately. In the event of a conflict in the drawings, bidder should not assume the least expensive option will meet the project requirements.



185 S. State Street
Salt Lake City, Utah 84111

MAVERIK INC. STORE
PARKER, COLORADO

DCI
ENGINEERS
1331 17TH STREET SUITE 605
DENVER, COLORADO 80202
PHONE: (720) 439-4700
WEBSITE: www.dci-engineers.com
CIVIL / STRUCTURAL

Copyright © 2022 by DCI Engineers, Inc. All Rights Reserved. No part of this document may be reproduced without the written permission of DCI Engineers, Inc. Bidder assumes full responsibility for error or misinterpretations resulting from partial sets of Bidding Documents by itself or any sub-bidder.

EXTERIOR ELEVATIONS



2 NORTH ELEVATION
SCALE: 1/4" = 1'-0"



1 EAST ELEVATION
SCALE: 1/4" = 1'-0"

D:\Lincoln\171420\171420_01_Parker_Maverik_Store.dwg

LINCOLN PROFESSIONAL PARK FILING NO. 1 LOT 1 MAVERIK INC. STORE SITE PLAN

SITUATED IN THE NORTHWEST OF SECTION 15,
TOWNSHIP 6 SOUTH, RANGE 66 WEST OF THE 6TH P.M.
TOWN OF PARKER, COUNTY OF DOUGLAS, STATE OF COLORADO

KEYED NOTES

- 04.05 NATURAL STONE
- 05.05 MBCI PRE-FINISHED ROOF, COLOR C-1, 1-3/4" STANDING SEAM
- 05.12 ALUMINUM COMPOSITE METAL PANEL, WORLDLY GRAY
- 05.68 ALUMINUM COMPOSITE METAL PANEL, WHITE
- 10.49 4A-40 BC FIRE EXTINGUISHER W/ CASE, LOCATE WITHIN 75' OF ALL PUMPS, DISPENSERS, OR STORAGE TANK. LOCATION TO BE FINALIZED BY FIRE MARSHAL
- 11.06 DISPENSING STATION (BY OTHERS)
- 26.07 ALL LIGHT FIXTURES (NOT SHOWN) TO BE FLUSH MOUNTED WITHIN THE DECK PANEL SOFFIT (SOFFIT COLOR P-7). SEE ELECTRICAL AND FUEL DISPENSING DRAWINGS
- 32.03 4" DIAMETER "U" BOLLARD, SET AND FILLED W/ CONCRETE, SEE CIVIL DRAWINGS, PAINTED P-4

PROJECT NUMBER

21-122-0001

ISSUE DATE:

March 10, 2022

REVISIONS:

No.	Date	Description

NOTE:
Bid documents should not be separated or issued as partial sets to subcontractors. bidders are responsible for all portions of the documents that pertain to work covered by sub-bids. Bidder assumes full responsibility for error or misinterpretations resulting from partial sets of Bidding Documents by itself or any sub-bidder.

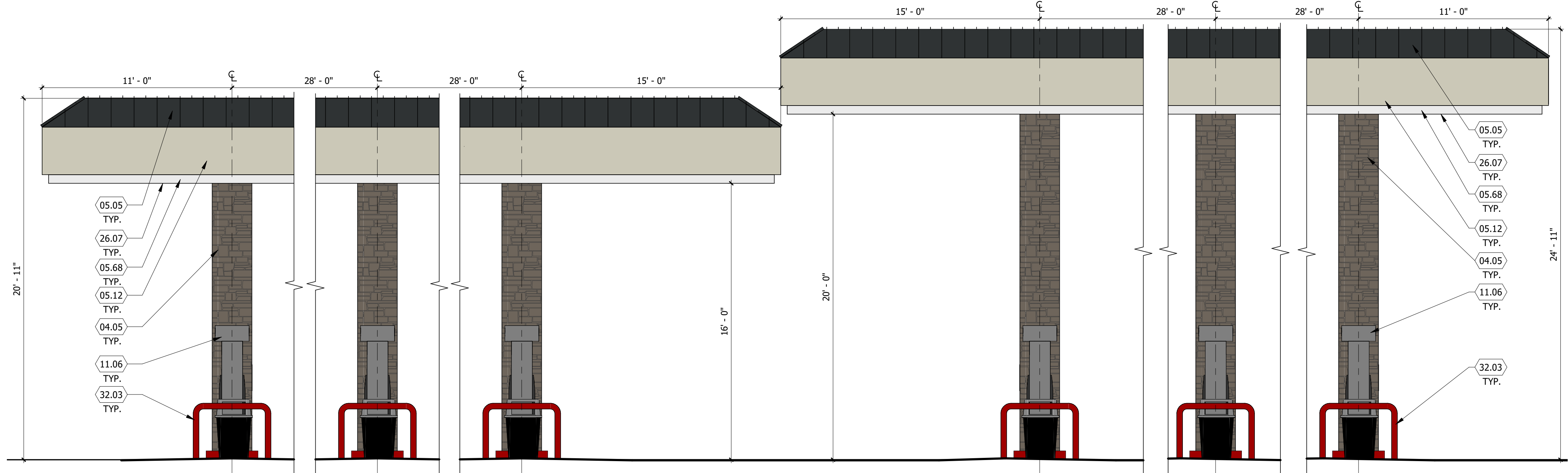
Conflicting information or errors found in the construction documents should be brought to the attention of the architect immediately. In the event of a conflict in the drawings, bidder should not assume the least expensive option will meet the project requirements.



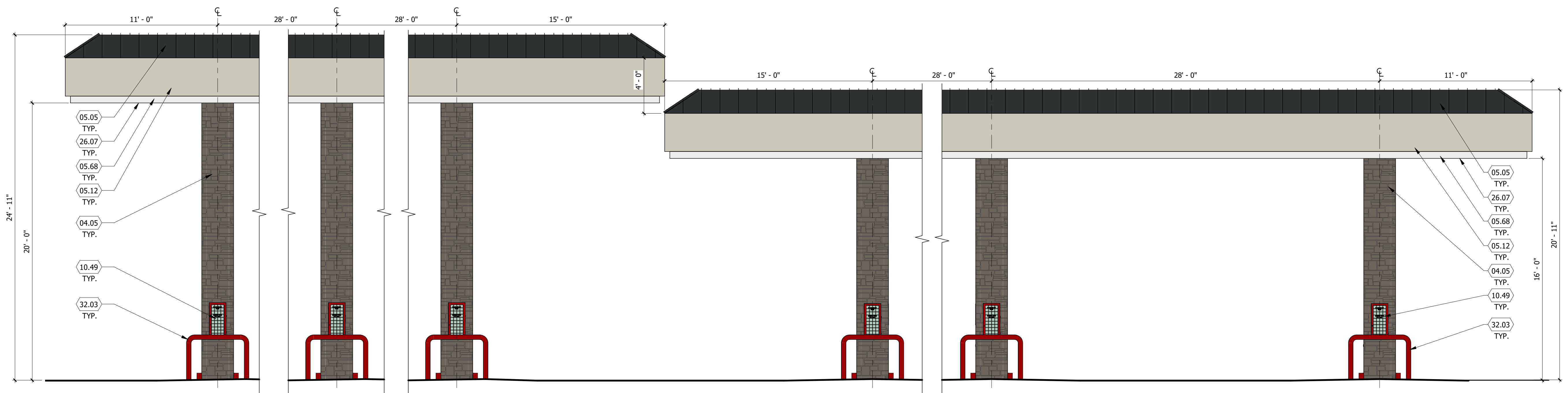
MAVERIK INC. STORE
PARKER, COLORADO



CANOPY ELEVATIONS



2 FUEL DISPENSING CANOPY - BUILDING SIDE ELEVATION
SCALE: 1/4" = 1'-0"



1 FUEL DISPENSING CANOPY - STREET SIDE ELEVATION
SCALE: 1/4" = 1'-0"

NOTE:
FUEL CANOPY DRAWINGS PROVIDED ARE CONCEPTUAL, AND MAY VARY FROM SITE TO SITE.

LINCOLN PROFESSIONAL PARK FILING NO. 1 LOT 1 MAVERIK INC. STORE SITE PLAN

SITUATED IN THE NORTHWEST OF SECTION 15,
TOWNSHIP 6 SOUTH, RANGE 66 WEST OF THE 6TH P.M.
TOWN OF PARKER, COUNTY OF DOUGLAS, STATE OF COLORADO

PROJECT NUMBER

21-122-0001

ISSUE DATE:

March 10, 2022

REVISIONS:

No.	Date	Description

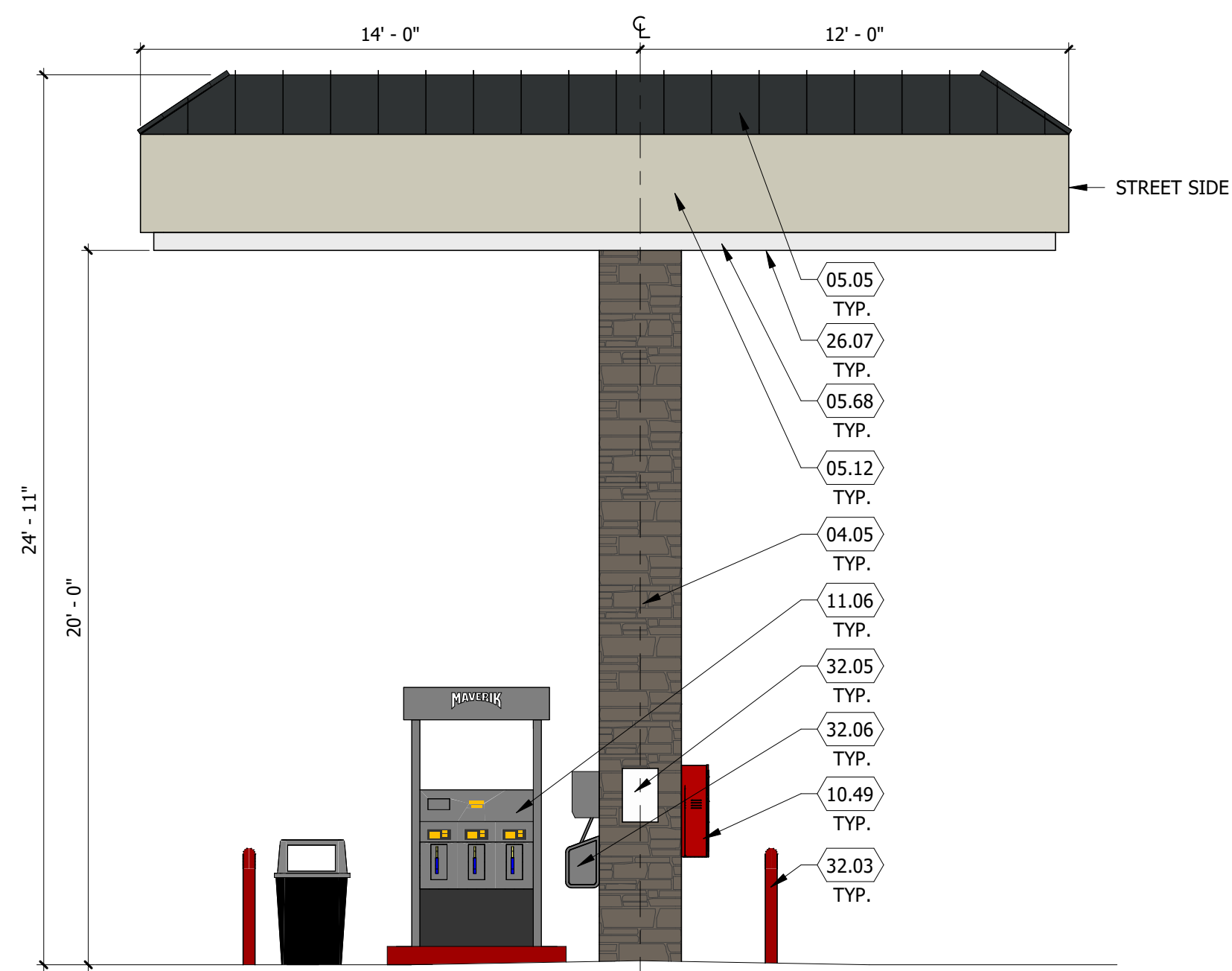
NOTE:
Bid documents should not be separated or issued as partial sets to subcontractors. bidders are responsible for all portions of the documents that pertain to work covered by sub-bids. Bidder assumes full responsibility for error or misinterpretations resulting from partial sets of Bidding Documents by itself or any sub-bidder.

Conflicting information or errors found in the construction documents should be brought to the attention of the architect immediately. in the event of a conflict in the drawings, bidder should not assume the least expensive option will meet the project requirements.

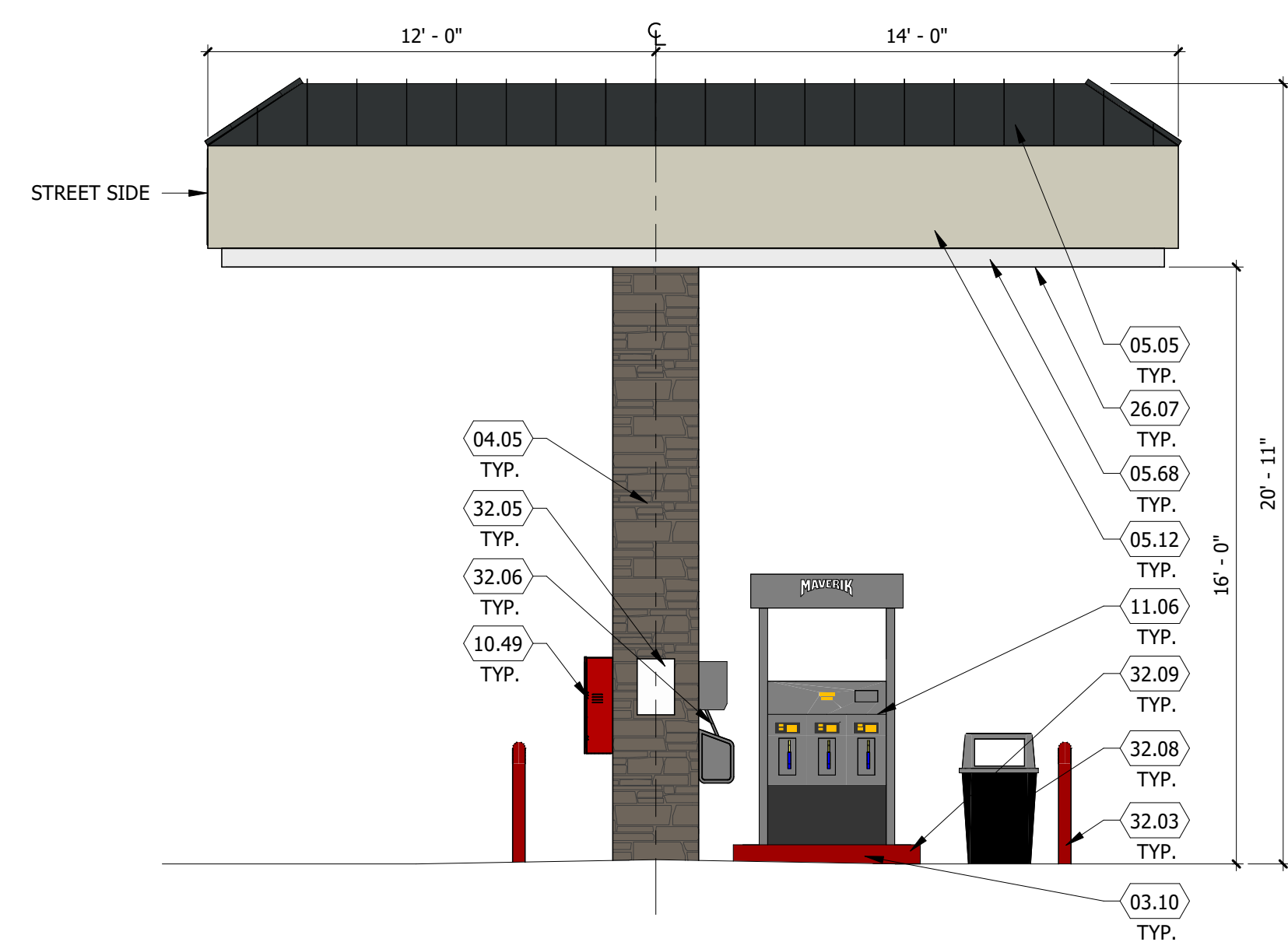


185 S. State Street
Salt Lake City, Utah 84111

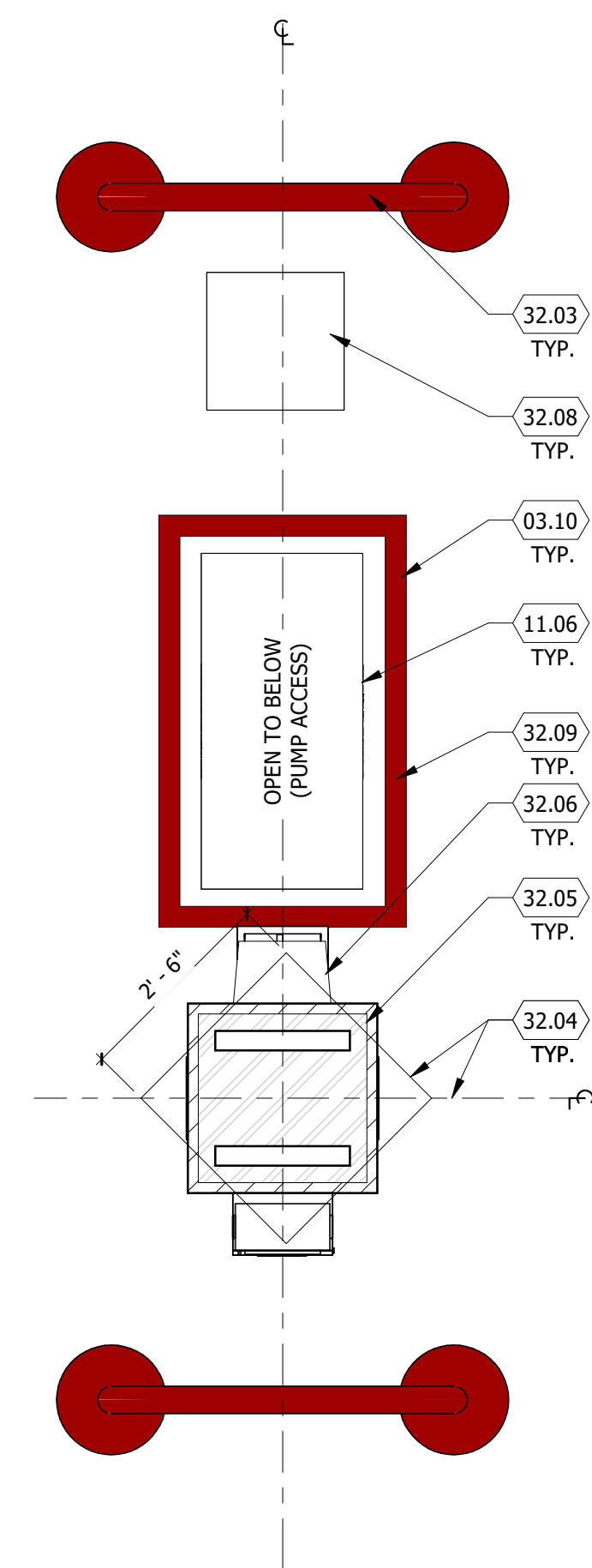
MAVERIK INC. STORE
PARKER, COLORADO



3 FUEL DISPENSING CANOPY - END ELEVATION
SCALE: 1/4" = 1'-0"



2 FUEL DISPENSING CANOPY - END ELEVATION
SCALE: 1/4" = 1'-0"



1 CANOPY COLUMN PLAN
SCALE: 1/2" = 1'-0"

DCI
ENGINEERS
1331 17TH STREET, SUITE 605
DENVER, COLORADO 80202
PHONE: (720) 439-4700
WEBSITE: www.dci-engineers.com
CIVIL / STRUCTURAL

CANOPY
ELEVATIONS

LINCOLN PROFESSIONAL PARK FILING NO. 1 LOT 1 MAVERIK INC. STORE SITE PLAN

SITUATED IN THE NORTHWEST OF SECTION 15,
TOWNSHIP 6 SOUTH, RANGE 66 WEST OF THE 6TH P.M.
TOWN OF PARKER, COUNTY OF DOUGLAS, STATE OF COLORADO

KEYED NOTES

- 03.08 CONCRETE FOOTINGS AND FOUNDATIONS, SEE STRUCTURAL DRAWINGS
- 03.13 CONCRETE PIER FOUNDATION, SEE STRUCTURAL DRAWINGS
- 04.05 NATURAL STONE
- 04.06 NATURAL STONE CAP
- 04.10 SPLIT FACE CAP
- 06.05 FIBER CEMENT BOARD & BATTEN SIDING, PAINTED, SHERWIN WILLIAMS SW 7043 - WORLDLY GRAY, BB-1
- 10.38 WELD BRACES TO GATE AS REQUIRED
- 10.39 POST, PAINTED P-9
- 10.40 CHAIN LINK GATE WITH SLATS TO MATCH P-9, W/ (4) HINGES, PAINTED P-9
- 10.41 LATCH W/ ROD TO CONCRETE, PAINTED P-9, W/ (4) HINGES, PAINTED P-9
- 10.42 STEEL SLEEVE

PROJECT NUMBER

21-122-0001

ISSUE DATE:

March 10, 2022

REVISIONS:

No.	Date	Description

NOTE:
Bid documents should not be separated or issued as partial sets to subcontractors. bidders are responsible for all portions of the documents that pertain to work covered by sub-bids. Bidder assumes full responsibility for error or misinterpretations resulting from partial sets of Bidding Documents by itself or any sub-bidder.

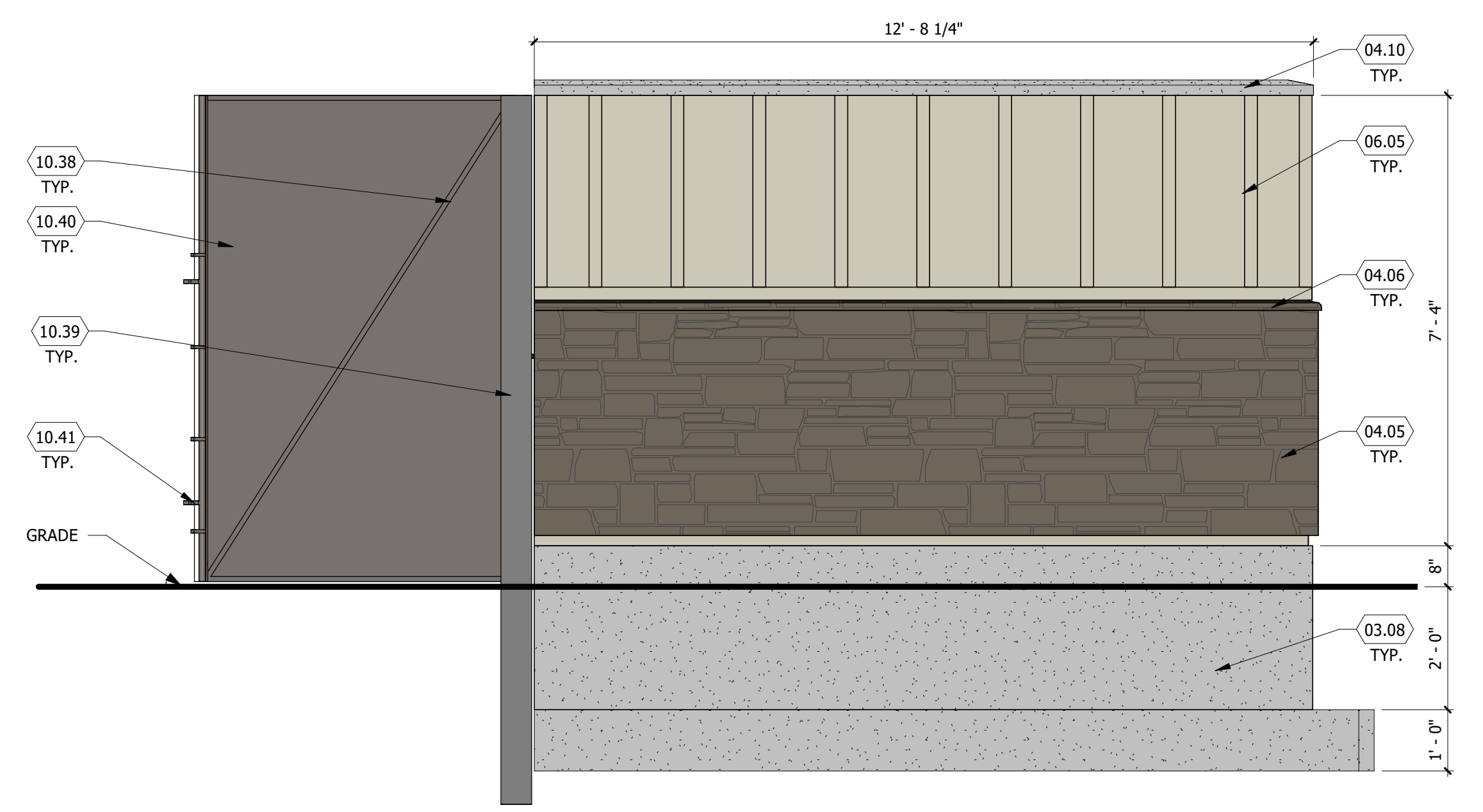
Conflicting information or errors found in the construction documents should be brought to the attention of the architect immediately. In the event of a conflict in the drawings, bidder should not assume the least expensive option will meet the project requirements.



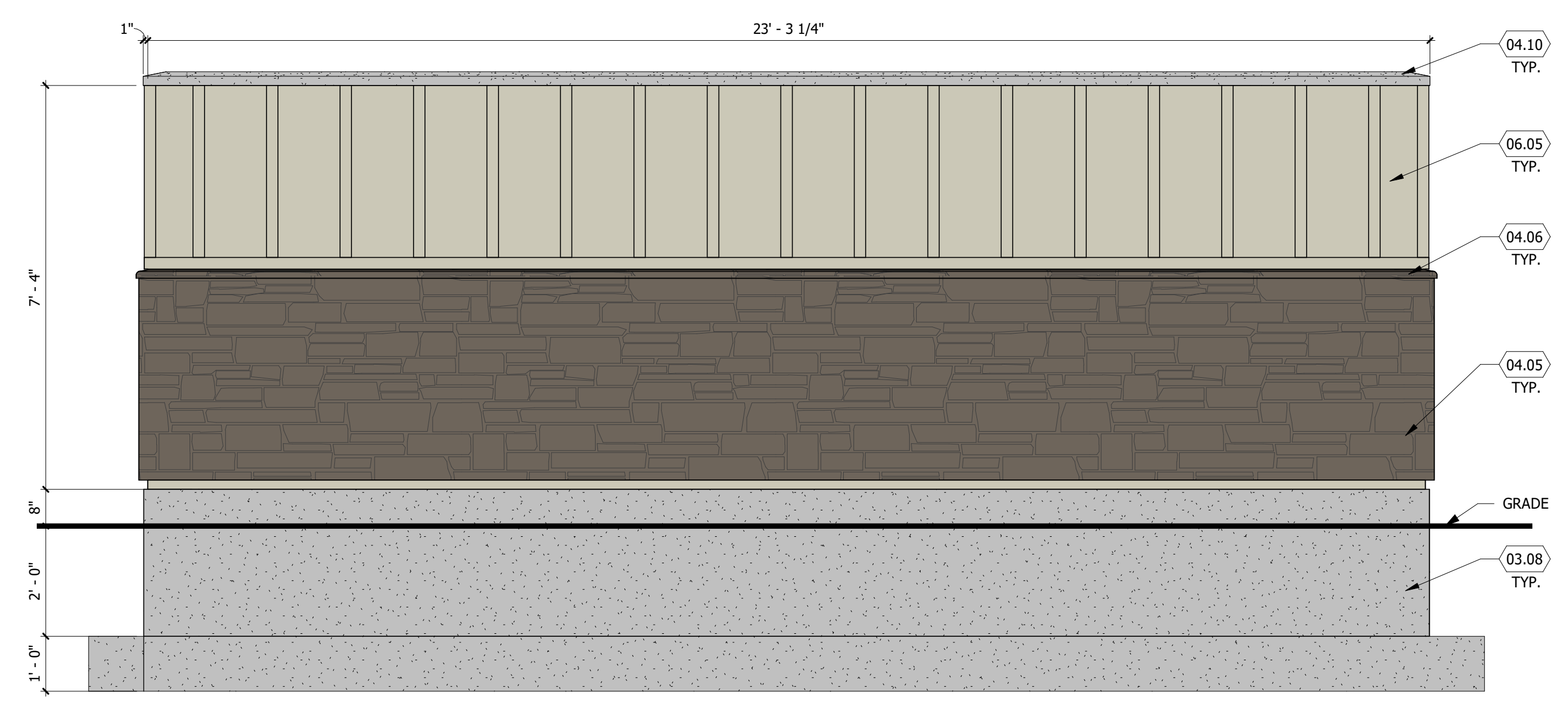
MAVERIK INC. STORE
PARKER, COLORADO



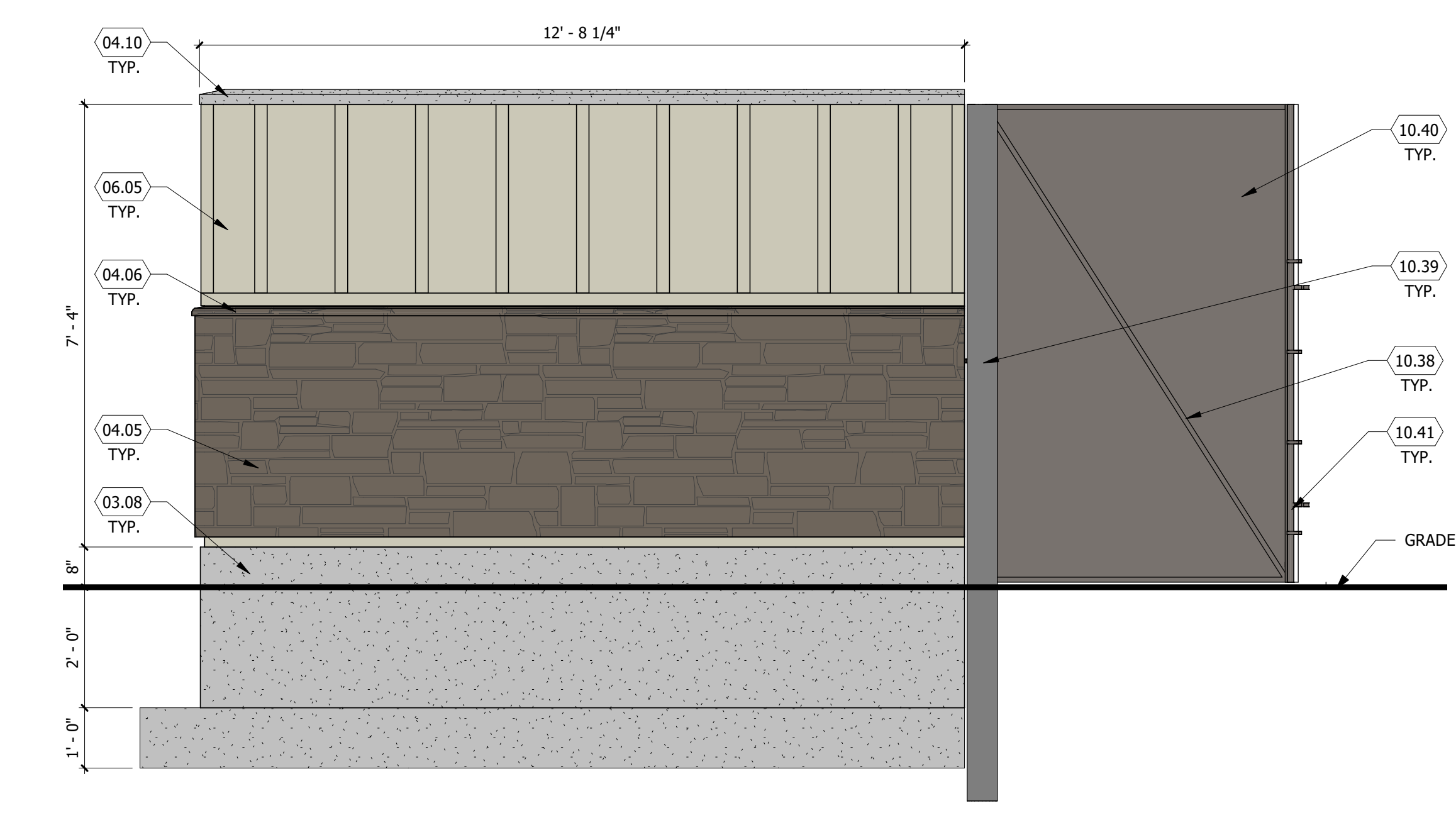
TRASH ENCLOSURE ELEVATIONS



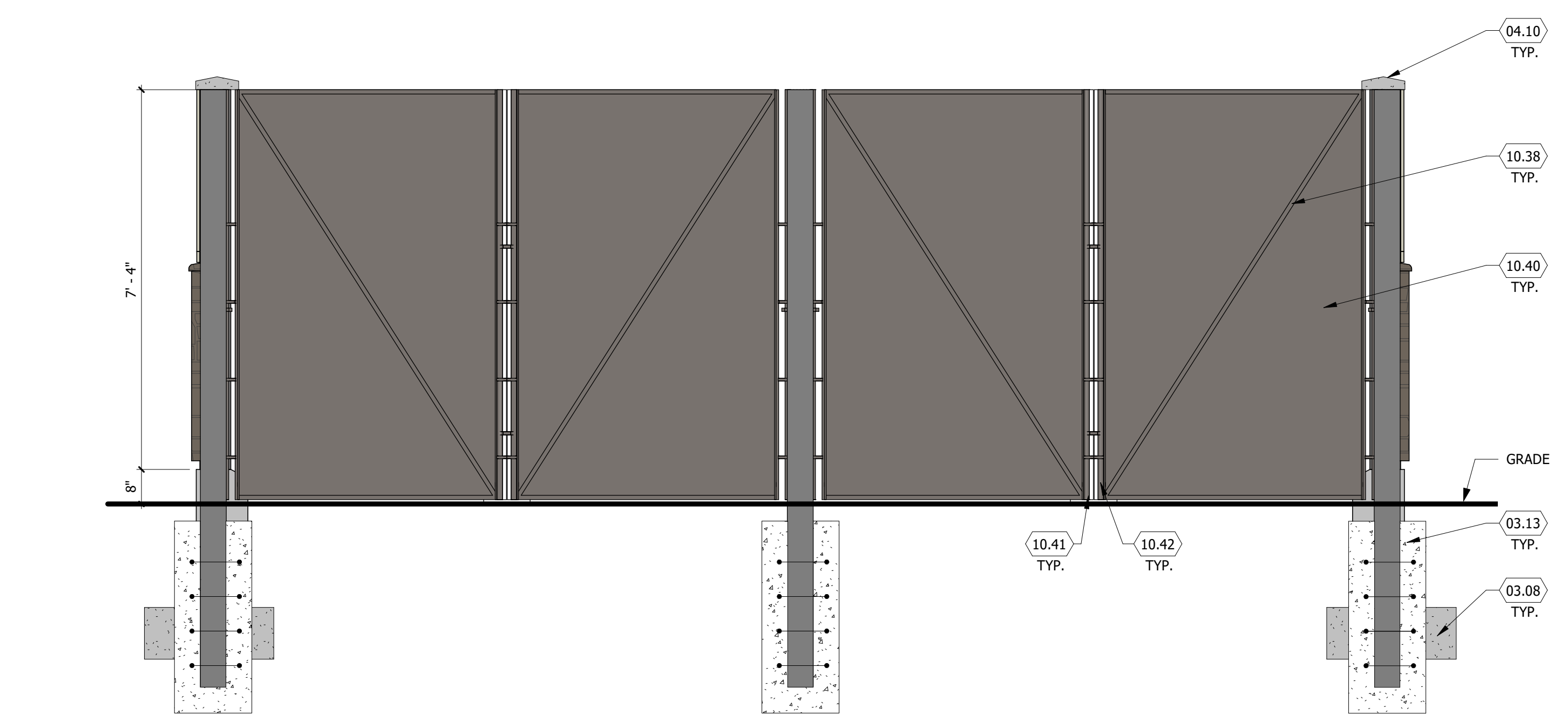
4 TRASH ENCLOSURE - LEFT ELEVATION
SCALE: 1/2" = 1'-0"



3 TRASH ENCLOSURE - BACK ELEVATION
SCALE: 1/2" = 1'-0"



2 TRASH ENCLOSURE - RIGHT ELEVATION
SCALE: 1/2" = 1'-0"



1 TRASH ENCLOSURE - FRONT ELEVATION
SCALE: 1/2" = 1'-0"

D:\Lincoln\Professional Park\0301_185_S_State_St_Parker_Colorado.dwg

LINCOLN PROFESSIONAL PARK FILING NO. 1 LOT 1 MAVERIK INC. STORE SITE PLAN

SITUATED IN THE NORTHWEST OF SECTION 15,
TOWNSHIP 6 SOUTH, RANGE 66 WEST OF THE 6TH P.M.
TOWN OF PARKER, COUNTY OF DOUGLAS, STATE OF COLORADO

PROJECT NUMBER

21-122-0001

ISSUE DATE:

March 10, 2022

REVISIONS:

No.	Date	Description

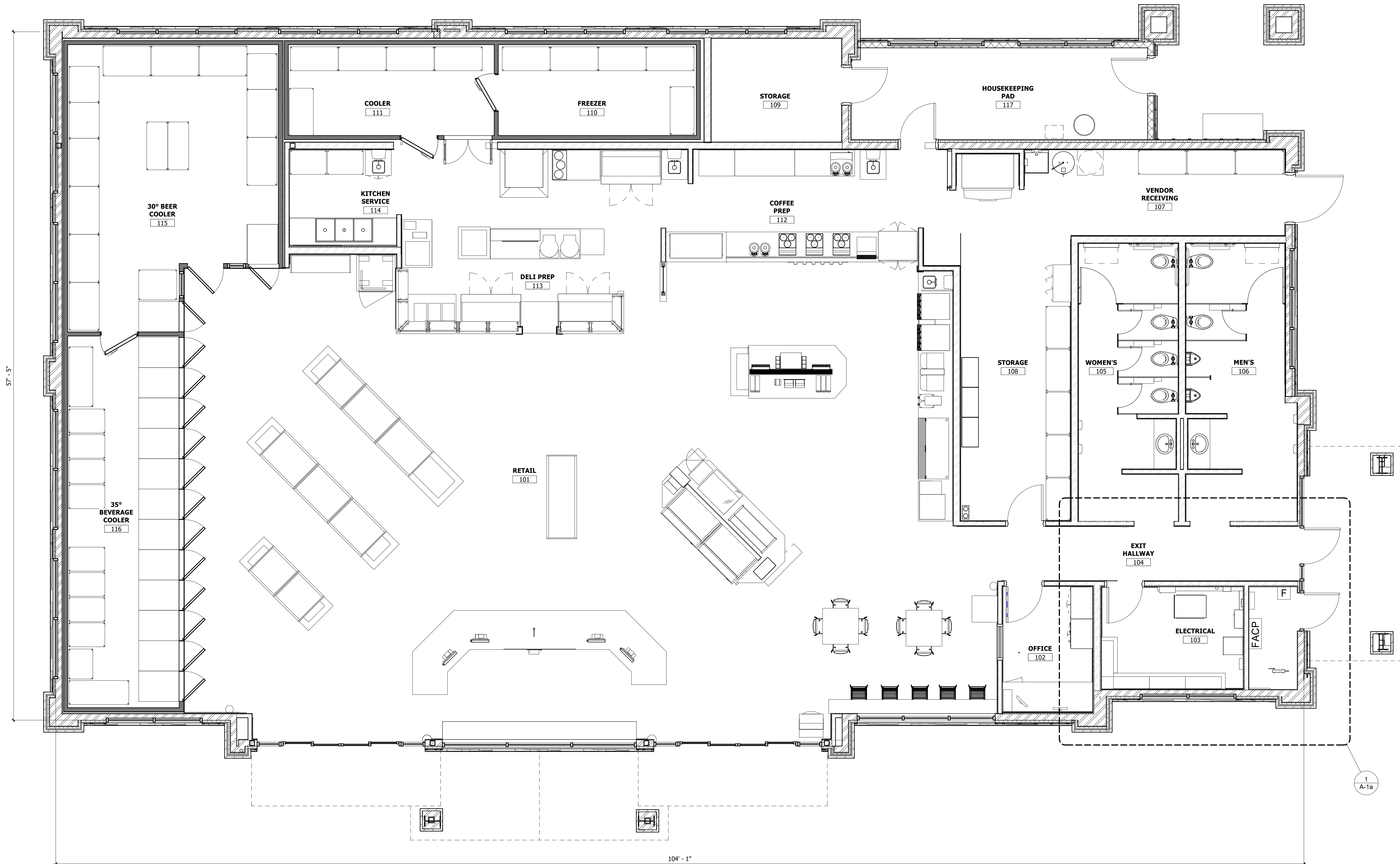
NOTE:
Bid documents should not be separated or issued as partial sets to subcontractors. Bidders are responsible for all portions of the documents that pertain to work covered by sub-bids. Bidder assumes full responsibility for error or misinterpretations resulting from partial sets of Bidding Documents by itself or any sub-bidder.

Conflicting information or errors found in the construction documents should be brought to the attention of the architect immediately. In the event of a conflict in the drawings, bidder should not assume the least expensive option will meet the project requirements.



185 S. State Street
Salt Lake City, Utah 84111

MAVERIK INC. STORE
PARKER, COLORADO



1 FLOOR PLAN
SCALE: 1/4" = 1'-0"

DCI ENGINEERS
1331 17TH STREET SUITE 605
DENVER, COLORADO 80202
PHONE: (720) 439-4700
WEBSITE: www.dci-engineers.com
CIVIL / STRUCTURAL

FLOOR PLAN

LINCOLN PROFESSIONAL PARK FILING NO. 1 LOT 1 MAVERIK INC. STORE SITE PLAN

SITUATED IN THE NORTHWEST OF SECTION 15,
TOWNSHIP 6 SOUTH, RANGE 66 WEST OF THE 6TH P.M.
TOWN OF PARKER, COUNTY OF DOUGLAS, STATE OF COLORADO

PROJECT NUMBER

21-122-0001

ISSUE DATE:

March 10, 2022

REVISIONS:

No.	Date	Description

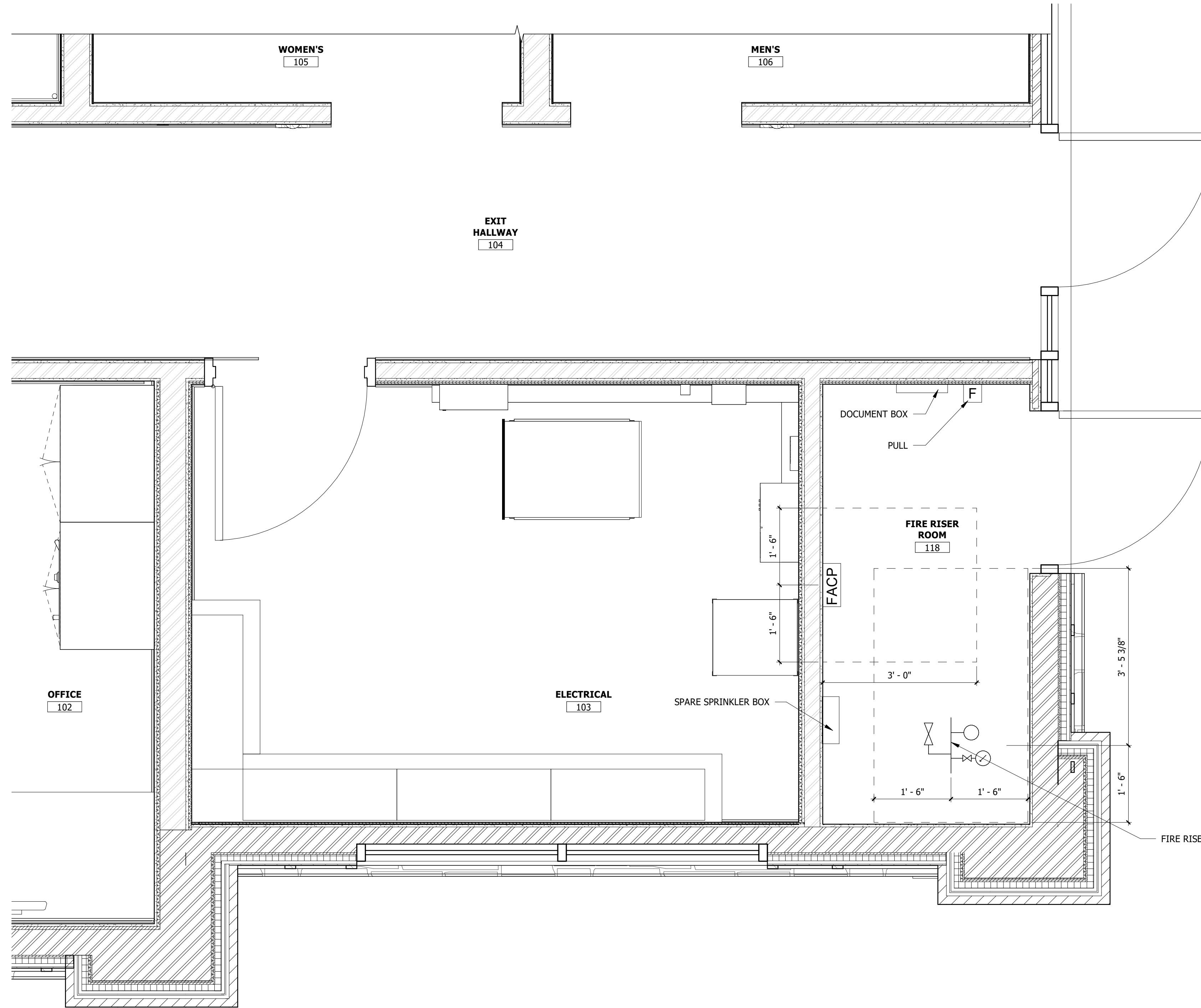
NOTE:
Bid documents should not be separated or issued as partial sets to subcontractors. bidders are responsible for all portions of the documents that pertain to work covered by sub-bids. Bidder assumes full responsibility for error or misinterpretations resulting from partial sets of Bidding Documents by itself or any sub-bidder.

Conflicting information or errors found in the construction documents should be brought to the attention of the architect immediately. In the event of a conflict in the drawings, bidder should not assume the least expensive option will meet the project requirements.



185 S. State Street
Salt Lake City, Utah 84111

MAVERIK INC. STORE
PARKER, COLORADO



1 ENLARGED FIRE RISER ROOM
SCALE: 3/4" = 1'-0"

DCI
ENGINEERS
1331 17TH STREET, SUITE 605
DENVER, COLORADO 80202
PHONE: (720) 439-4700
WEBSITE: www.dci-engineers.com
CIVIL / STRUCTURAL

© Copyright 2022 DCI Engineers, Inc. All Rights Reserved.
This document and its contents are the property of DCI Engineers, Inc. and are not to be distributed, copied, or reproduced in any form without the written consent of DCI Engineers, Inc. Bidder assumes responsibility for its construction use.

**ENLARGED
FIRE RISER
ROOM**

D:\Lincoln\Professional Park\Filing No. 1 Lot 1\MAVERIK INC. STORE\ENLARGED FIRE RISER ROOM.dwg

LINCOLN PROFESSIONAL PARK FILING NO. 1 LOT 1 MAVERIK INC. STORE SITE PLAN

SITUATED IN THE NORTHWEST OF SECTION 15,
TOWNSHIP 6 SOUTH, RANGE 66 WEST OF THE 6TH P.M.
TOWN OF PARKER, COUNTY OF DOUGLAS, STATE OF COLORADO

PROJECT NUMBER

21-122-0001

ISSUE DATE:

March 10, 2022

REVISIONS:

No.	Date	Description

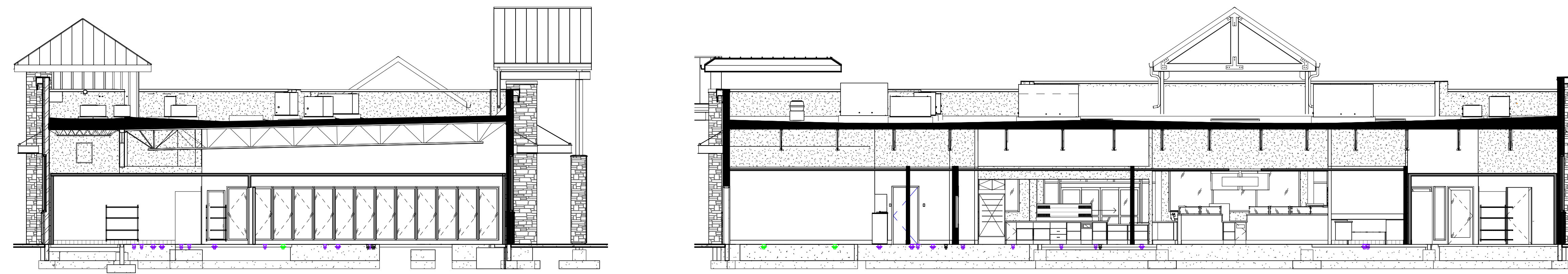
NOTE:
Bid documents should not be separated or issued as partial sets to subcontractors. Bidders are responsible for all portions of the documents that pertain to work covered by sub-bids. Bidder assumes full responsibility for error or misinterpretations resulting from partial sets of Bidding Documents by itself or any sub-bidder.

Conflicting information or errors found in the construction documents should be brought to the attention of the architect immediately. In the event of a conflict in the drawings, bidder should not assume the least expensive option will meet the project requirements.



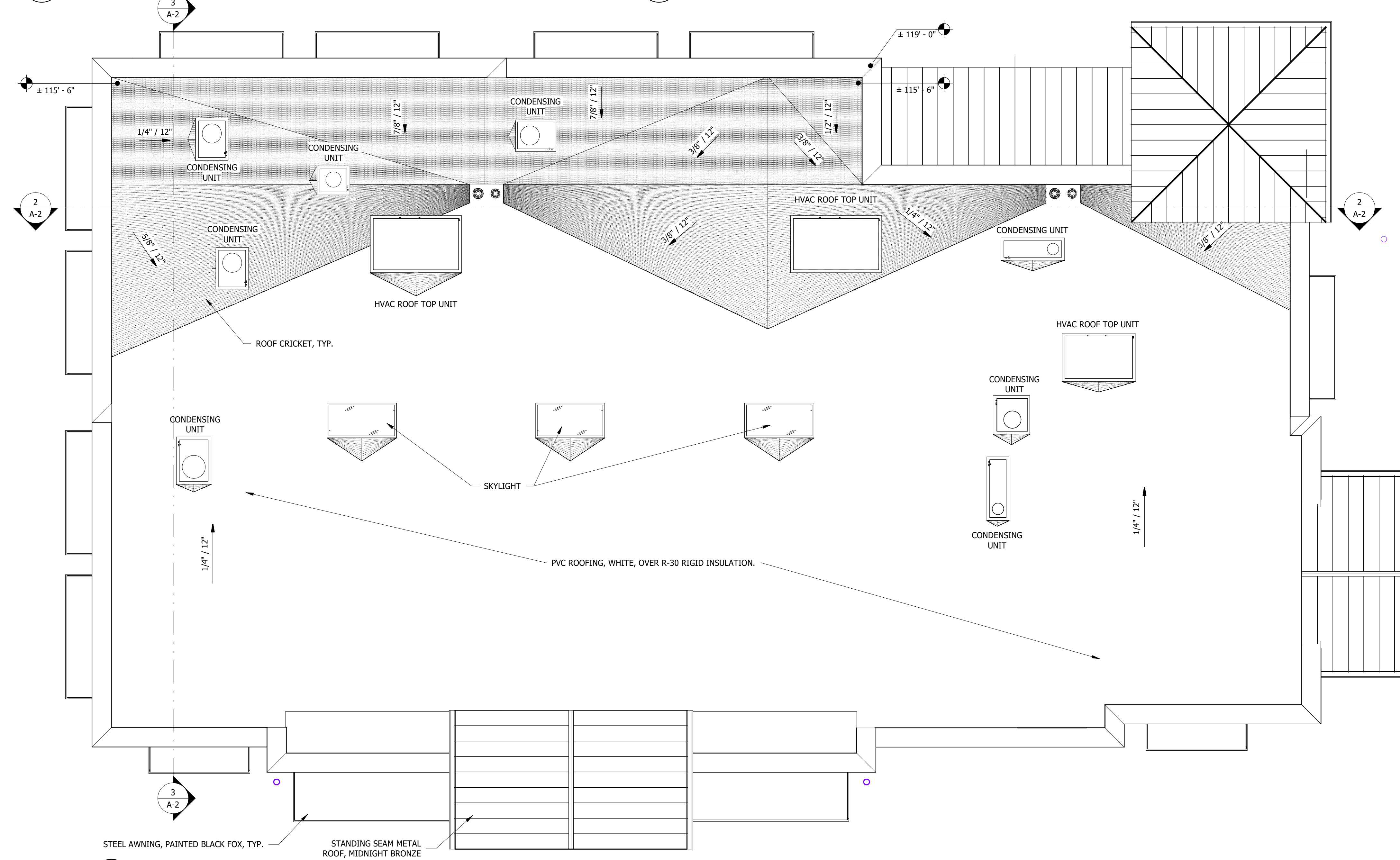
185 S. State Street
Salt Lake City, Utah 84111

MAVERIK INC. STORE
PARKER, COLORADO



3 BUILDING SECTION
SCALE: 1/8" = 1'-0"

2 BUILDING SECTION
SCALE: 1/8" = 1'-0"

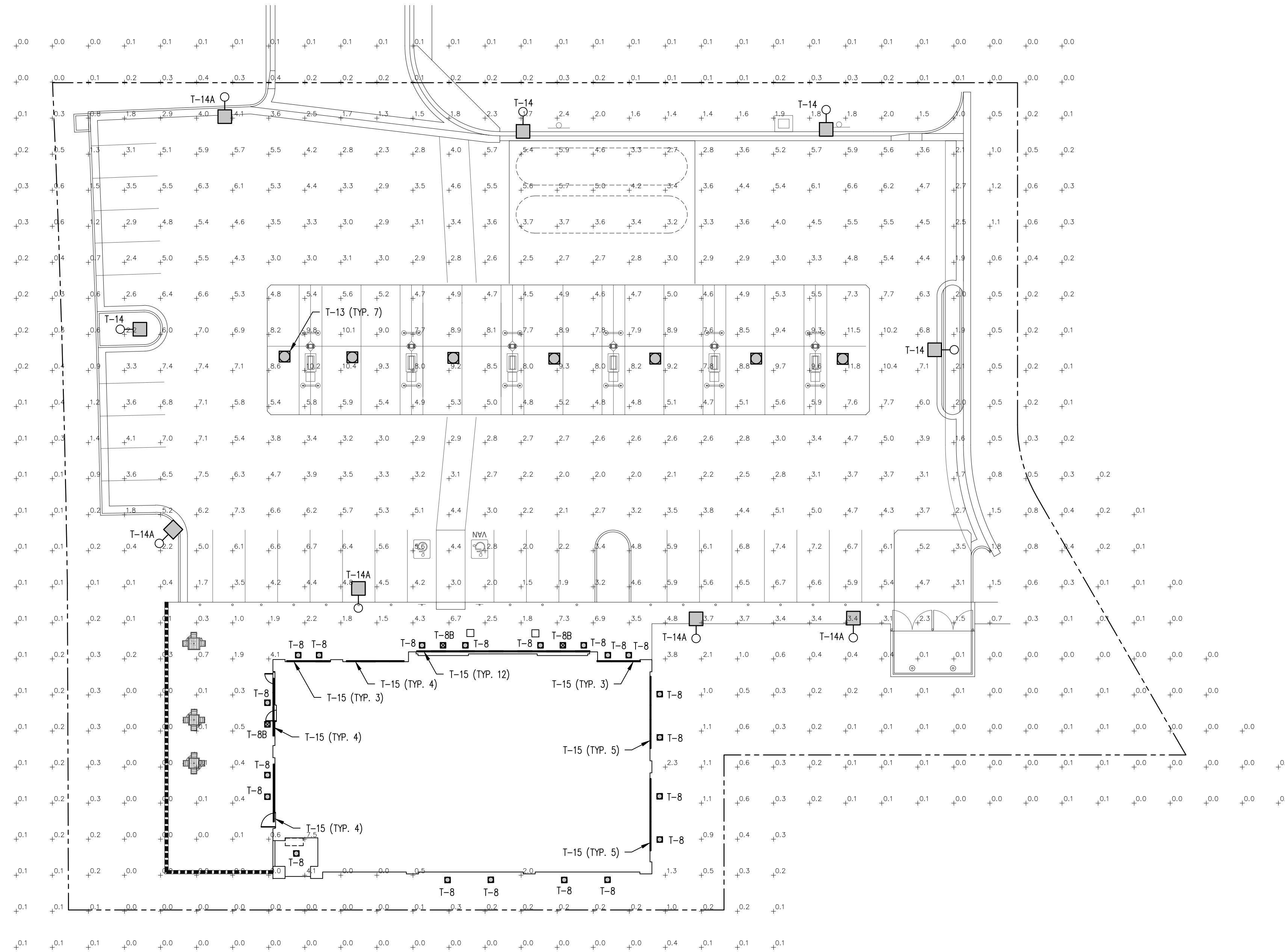


1 ROOF PLAN
SCALE: 3/16" = 1'-0"

DCI ENGINEERS
1331 17TH STREET, SUITE 605
DENVER, COLORADO 80202
PHONE: (720) 439-4700
WEBSITE: www.dci-engineers.com
CIVIL / STRUCTURAL

ROOF PLAN

**LINCOLN PROFESSIONAL PARK FILING NO. 1 LOT 1
MAVERIK INC. STORE SITE PLAN**
SITUATED IN THE NORTHWEST ¼ OF SECTION 15,
TOWNSHIP 6 SOUTH, RANGE 66 WEST OF THE 6TH P.M.
TOWN OF PARKER, COUNTY OF DOUGLAS, STATE OF COLORADO



1 SITE PHOTOMETRIC PLAN
E-1.2 SCALE: 1"=20'-0"

MASTER LUMINAIRE SCHEDULE									
TYPE	MANUFACTURER	CATALOG NUMBER	VOLTS	MOUNTING	LAMPS	BALLAST	WATTS	IMAGE	
DESCRPT: RECESSED BLACK LED DOWNLIGHT 8" APERTURE, 2900 LUMENS, 4K									
T-8	LOTUS LED	LD8R-40K-HO-BR-BT	120	RECESSED	INCLUDED		30		
T-8B	SAME AS T-8 EXCEPT WITH EMERGENCY BATTERY							30	
DESCRPT: WHITE, CANOPY MOUNTED, CUTOFF LUMINAIRE, 103W LED, FLAT LENS, FOR SINGLE DECK CANOPIES (10,209 LUMENS)									
T-13	LSI	SCV LED 10L SC UNV DIM 40 WHI	UNV	CANOPY	INCLUDED		67		
DESCRPT: POLE MOUNTED, DARK BRONZE CUTOFF LUMINAIRE SINGLE HEAD, INTEGRAL LOUVER, LED, 18,930 LUMENS, 17.5FT SQUARE POLE (4", 11 GA.), 4K									
T-14	LSI	SLM LED 18L SIL 3 UNV 40 70 CRI BRZ IL	208	17"-6" POLE	INCLUDED		135		
T-14A	SAME AS T-14 EXCEPT WITH TYPE IV DISTRIBUTION (FORWARD THROW)							135	
DESCRPT: 4FT LED STRIP LUMINAIRE, FULLY RECESSED IN EXTERIOR COVE, WHITE, COLD WEATHER (0F), 2000 LUMENS, DAMP LISTED, LENS, 4K									
T-15	LSI	AST 4 4L SA UNV 840	UNV	EXTERIOR COVE	INCLUDED		20		

*LUMINAIRES ARE PROVIDED BY OWNER, INSTALLED BY E.C. (REFERENCE SCHEDULE ON E-4.0)

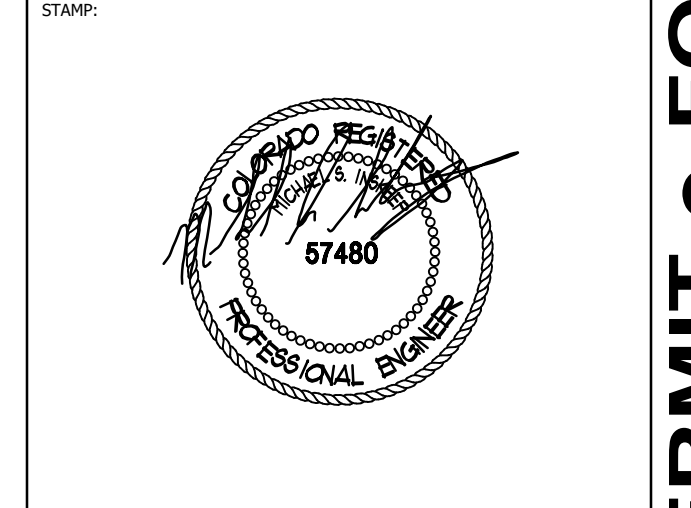
CALCULATION SUMMARY								
AREA NAME	GRID / TYPE	SPAC	GROUP	AVE	MAX	MIN	MAX/MIN	AVE/MIN
OVERALL	0'-0" / H-H	10.00	<+>	2.5	11.8	0.00	N/A	N/A
PARKING	0'-0" / H-H	10.00	<+>	4.5	11.2	1.5	7.5:1	3.0:1



185 S. State Street
Salt Lake City, Utah 84111
THESE PLANS ARE SUBJECT TO FEDERAL COPYRIGHT LAWS: ANY USE OF SAME WITHOUT THE EXPRESSED WRITTEN PERMISSION OF MAVERIK, INC IS PROHIBITED. 2019 MAVERIK, INC.

ARCHITECT:

ENGINEER:
NEI
Nelson Engineering, Inc.
Consulting Engineers
156 North Twelfth Avenue
Provo, Utah 84601
Ph (208) 232-2577 FAX
(208) 234-0918
OWNERSHIP OF DOCUMENTS
This document, including the ideas and designs incorporated herein, is the property of NELSON ENGINEERING, INC. and shall not be used, in whole or in part, for any other project without the written permission of an authorized representative of NELSON ENGINEERING, INC. Unauthorized use will be prosecuted to the full extent of the law.
Copyright © 2022
by: NELSON ENGINEERING, INC.



STAMP:

**MAVERIK, INC.
STORE #**

**LINCOLN AVENUE AND
DRANSFELDT ROAD
PARKER, CO**

REVISIONS	
DESCRIPTION	DATE

DESIGNED BY: MJE DRAWN BY: MJE
REVIEWED BY: MJE APPROVED BY: MSI
PROTOTYPE VERSION: 50
DRAWING ISSUE
DATE: 12-6-22
PROJECT NUMBER: 21337

SHEET NAME
PHOTOMETRIC PLAN

SHEET NUMBER
26.0 OF 26

FOR REVIEW AND PERMIT • FOR REVIEW AND PERMIT • FOR REVIEW AND PERMIT

LINCOLN PROFESSIONAL PARK FILING NO. 1 LOT 1 MAVERIK INC. STORE SITE PLAN

SITUATED IN THE NORTHWEST ¼ OF SECTION 15,
TOWNSHIP 6 SOUTH, RANGE 66 WEST OF THE 6TH P.M.
TOWN OF PARKER, COUNTY OF DOUGLAS, STATE OF COLORADO



185 S. State Street
Salt Lake City, Utah 84111

THESE PLANS ARE SUBJECT TO FEDERAL COPYRIGHT LAWS: ANY
USE OF SAME WITHOUT THE EXPRESSED WRITTEN PERMISSION
OF MAVERIK, INC IS PROHIBITED. 2019 MAVERIK, INC.

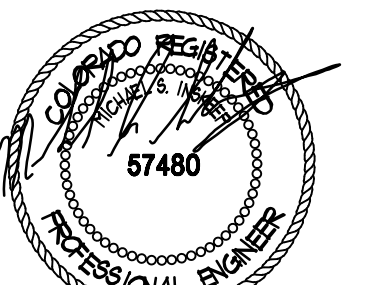
ARCHITECT:

ENGINEER:



OWNERSHIP OF DOCUMENTS
This document, including the ideas and designs incorporated herein, as an
instrument of professional service, is the property of NELSON ENGINEERING, INC.
and shall not be used, in whole or in part, for any other project without the
written permission of an authorized representative of NELSON ENGINEERING, INC.
Unauthorized use will be prosecuted to the full extent of the law.
Copyright © 2022
by: NELSON ENGINEERING, INC.

STAMP:



MAVERIK, INC. STORE #
LINCOLN AVENUE AND
DRANSFELDT ROAD
PARKER, CO

Scottsdale Vertex SCV Petroleum

Typical Order Example: **SCV LED 13L SC UNV DIM 50 WHT IMSB2T**

Family / Size	LED	Lumen Package	Distribution	Voltage	Driver	Color Temperature	Finish	Beam - ICSE	Controls
SCV Premium Canopy Luminaire	LED	13L - 13000 Lumens 13L - 13000 Lumens 23L - 23000 Lumens	SC - Standard Symmetric	UNV - 0 to 15V (dimming) HW - 347-480V	UNV - 0 to 15V (dimming)	48 - 4000K 30 - 3000K	WHT - White BLK - Black BRZ - Bronze	BLK - ICSE	ALSC - AiLink Sympage Wireless Control System with Sensor ALSC21 - AiLink Blue Wireless Motion & Photo Sensor Controller (30-47 mounting height) ALSC22 - AiLink Blue Wireless Motion & Photo Sensor Controller (25-47 mounting height) IMSBT1 - Integral Bluetooth™ Motion and Photo Sensor (25 - 47 mounting height) IMSBT2 - Integral Bluetooth™ Motion and Photo Sensor (25 - 47 mounting height)

Accessory Ordering Information

Description	Order Number	Description	Order Number
Recessed Panel Kit - IC/ECTA/ISF to SCV for 1" Deck Panel with larger opening*	87423	2" x 3" x 3" Ready Plate Kit (with 4" Center Hole)	64199WHT
Recessed Panel Kit - IC/ECTA/ISF to SCV for 1" Deck Panel	87611	Juniper Box	89741
Recessed Panel Kit - IC/ECTA/ISF to SCV	87428	1/2" Hex Plug and Washer (single) for 1/2" threads	123240
Recessed Panel Kit - UNV (Universal 0-15V)	87427	Recessing Top Plate (to include top plate and sealant)	67399WHT
Recessed 2x2 Cover Panel (see table)	30782	Surface Mount Box	87433
Recessed 1x2 Cover Panel (see table)	30470	Panel Kit - CR/US/ISF to SCV	89742
1" x 1" x 1" Deck Panel Kit (with 4" Center Hole)	80719WHT		

FOOTNOTES:
1 - Consult factory for use with AiLink Sympage Wireless Control System.
2 - IMSBT1 is field configurable via the LSI app that can be downloaded from your smartphone's native app store.
3 - Ideal for 9" to 12" openings.
4 - Ideal for 8" openings.
5 - Not available in HV.

PERFORMANCE

Beam Spread	Beam Angle	Beam Diameter @ 10m	Beam Diameter @ 15m	Beam Diameter @ 20m	Beam Diameter @ 25m	Beam Diameter @ 30m	Beam Diameter @ 35m	Beam Diameter @ 40m	Beam Diameter @ 45m	Beam Diameter @ 50m
15°	1.57°	1.57m	2.36m	3.14m	3.93m	4.71m	5.50m	6.28m	7.07m	7.85m
30°	3.14°	3.14m	4.71m	6.28m	7.85m	9.42m	11.00m	12.57m	14.14m	15.71m
45°	4.71°	4.71m	7.07m	9.42m	11.78m	14.14m	16.50m	18.86m	21.22m	23.58m
60°	6.28°	6.28m	9.42m	12.57m	15.71m	18.86m	21.99m	25.13m	28.27m	31.42m
75°	7.85°	7.85m	11.78m	15.71m	19.64m	23.58m	27.45m	31.42m	35.29m	39.16m
90°	9.42°	9.42m	14.14m	18.86m	23.58m	28.27m	32.99m	37.70m	42.41m	47.12m

SC DISTRIBUTION RECOMMENDED LUMEN MAINTENANCE*

Ambient Temperature °C	0 hrs.†	25K hrs.†	50K hrs.†	75K hrs.†	100K hrs.†
25	1.00	0.96	0.92	0.88	0.84
30	1.00	0.95	0.91	0.87	0.83
40	1.00	0.90	0.85	0.81	0.77
45	1.00	0.90	0.85	0.81	0.77

SCVF DISTRIBUTION RECOMMENDED LUMEN MAINTENANCE*

Ambient Temperature °C	0 hrs.†	25K hrs.†	50K hrs.†	75K hrs.†	100K hrs.†
25	1.00	1.00	1.00	0.99	0.99
30	1.00	1.00	0.99	0.99	0.99
35	1.00	1.00	0.99	0.99	0.99
40	1.00	1.00	0.99	0.99	0.99

ELECTRICAL DATA*

Lumen Level	13W	20W	24W	27W	34W	48W
1%	0.95	0.92	0.92	0.94	0.93	0.94
1%	0.79	0.81	0.80	0.82	0.81	0.82
1%	0.86	0.80	0.83	0.87	0.86	0.87
2%	1.09	0.82	0.84	0.87	0.89	0.87
2%	0.92	0.87	0.88	0.92	0.91	0.92
2%	0.97	0.89	0.90	0.94	0.93	0.94

LSI Industries Inc. 10000 Alliance Rd. Cincinnati, OH 45242 • www.lsi-industries.com
(513) 372-3200 • ©2020 LSI Industries Inc. All Rights Reserved. Specifications subject to change without notice.
Page 2/9 Rev. 18/21/20
SPEC.1033.A.0430

Scottsdale Vertex™ (scv) Petroleum Canopy LED Luminaire

Typical Order Example: **SCV LED 13L SC UNV DIM 40 WHT ALCSB1 w/ Box**

OVERVIEW

Lumen Package	9,000 - 24,000
Wattage Range	69 - 152
Efficiency Range (LPW)	109 - 156
Weight (lbs/kg)	15 (6.8)

QUICK LINKS

Ordering Guide Performance Photometrics Dimensions

FEATURES & SPECIFICATIONS

Construction

- Rugged low-profile die-cast aluminum housing, optical unit, and driver cover.
- Below canopy access to optical chamber and driver housing for serviceability.
- IP66 rated optical unit protects integral components from dust and water.
- Fixtures are finished with LSI's DuraGrip™ polyester powder coat finishing process. The DuraGrip finish withstands extreme weather changes without cracking or peeling.
- A single fastener secures access door to driver and key components and provides quick & easy access to the electrical compartment for servicing.
- Shipping weight: 15 lbs in carton.

Hazardous Location

- Total harmonic distortion: <20%
- Operating temperature: -40°C to +50°C (-40°F to 122°F) when mounted to Steel/Aluminum surfaces for 10L, 13L, & 15L Lumen Packages; -45°C to 20K Lumen Package; and -40°C for 23L Lumen Package. If mounted to a non-metallic surface, reduce ambient by 5°C.
- Power factor: >0.90
- Field replaceable surge protection device meets a minimum Category C Low operation (per ANSI/IEEE C62.41.2).
- High efficiency LEDs are mounted to (4) circuit boards to maximize heat dissipation.
- Driver components are fully enclosed in potting material for moisture resistance. Driver complies with FCC standards.

Warranty

- LSI LED Fixtures carry a 5-year warranty or 50-year warranty with registration for petroleum applications only contact your LSI representative for details.

Listings

- Listed to UL 1598 and UL 8750.
- RoHS Compliant.
- Meets Buy American Act requirements.
- Listed to UL 1598 and UL 8750.
- Designlights Consortium (DLC) qualified product. Not all versions of this product may be DLC qualified. Please check the DLC Qualified Products List at www.designlights.org/DLC to confirm which versions are qualified.

Slice Medium Outdoor LED Area Light

Typical Order Example: **SLM LED 36L SIL FTA UNV DIM 50 70CRI ALSCS04 BRZ IL**

OVERVIEW

Lumen Package	9,000 - 42,000
Wattage Range	69 - 390
Efficiency Range (LPW)	93 - 145
Weight (lbs/kg)	30 (13.6)

QUICK LINKS

Ordering Guide Performance Photometrics Dimensions

FEATURES & SPECIFICATIONS

Construction

- Rugged die-cast aluminum housing contains factory prewired driver and optical unit. Cast aluminum wiring access door located underneath.
- Designed to mount to square poles.
- Fixtures are finished with LSI's DuraGrip™ polyester powder coat finishing process. The DuraGrip finish withstands extreme weather changes without cracking or peeling. Other standard LSI finishes available. Consult factory.
- Total harmonic distortion: <20%
- Operating temperature: -40°C to +50°C (-40°F to 122°F). 42L lumen package rated to +60°C.
- Power factor: > 0.90
- Input power stays constant over life.
- Field replaceable 10kV surge protection device meets a minimum Category C Low operation (per ANSI/IEEE C62.41.2).
- Title 24 Compliant; see local ordinance for qualification information.
- IP66 rated luminaire per IEC 60598.
- 3G rated for ANSI C136.3 high vibration applications.
- IP66 rated Luminaire per IEC 60598.
- 3G rated for ANSI C136.3 high vibration applications are qualified.

Electrical

- High-performance programmable driver features over-voltage, under-voltage, short-circuit and over-temperature protection.
- 0-10V dimming (10% - 100%) standard.
- Standard Universal Voltage (120-277 Vac) Input 50/60 Hz or optional High Voltage (347-480 Vac).
- LSI Calculated Life: >100K Hours (See Lumen Maintenance on Page 2)

Installation

- Installs in a 12" or 16" deep can.
- Four fasteners are provided with the fixture for using deck, metallic canopy substrates only when classified as suitable for use by installing professional otherwise suitable fasteners should be provided by others.
- Unit is designed to quickly retrofit into existing Scottsdale® (47) hole.

LSI Industries Inc. 10000 Alliance Rd. Cincinnati, OH 45242 • www.lsi-industries.com
(513) 372-3200 • ©2020 LSI Industries Inc. All Rights Reserved. Specifications subject to change without notice.
Page 1/6 Rev. 06/18/20
SPEC.1033.A.0430

8" Round Deep Regressed LED 18W / 30W Open Plenum

Typical Order Example: **LD8R**

OVERVIEW

Lumen Package	9,000 - 24,000
Wattage Range	69 - 152
Efficiency Range (LPW)	109 - 156
Weight (lbs/kg)	15 (6.8)

QUICK LINKS

Ordering Guide Performance Photometrics Dimensions

FEATURES & SPECIFICATIONS

Construction

- 8" Round Deep Regressed LED - Elegant Design Without Glare
- Commercial Grade Quality Built To Last

FEATURES & BENEFITS

- 18W & 30W High Output versions with CRI 90+
- Type IC, Air-Tight & Wet - No Housing Required
- 4 1/2" Deep - Install Where Ceiling Space Is Limited
- Amound Cable & Metal Connectors - Open Plenum Rated
- Driver Inside Connection Box with Romex Quick Connectors and Knock Outs - Fast Installation & No Junction Box Needed

Dimensions ID 2 1/2" OD 9" Out-let 1 1/2" to 8"

AVAILABLE TRIMS

White Reflector	Silver Reflector	Black Reflector	Silver Reflector
WR-WT	SR-WT	BR-BT	SR-BT

ACCESSORIES

- Soft Separately
- Amound Low Voltage Extension 10ft cat # MEC10
- Flat Rough-In Plates - cat # RPB
- Goof Ring White OD 9 1/2" cat # GR8
- Goof Ring White OD 10 1/2" cat # GR10

COMPLIANCE

UL LISTED ETL LISTED

TYPE IC
Air - Tight
Open Plenum

Slice Medium Outdoor LED Area Light

Typical Order Example: **SLM LED 18L SIL 3 UNV 40 70CRI BRZ**

OVERVIEW

Lumen Package	9,000 - 42,000
Wattage Range	69 - 390
Efficiency Range (LPW)	93 - 145
Weight (lbs/kg)	30 (13.6)

QUICK LINKS

Ordering Guide Performance Photometrics Dimensions

FEATURES & SPECIFICATIONS

Construction

- Rugged die-cast aluminum housing contains factory prewired driver and optical unit. Cast aluminum wiring access door located underneath.
- Designed to mount to square poles.
- Fixtures are finished with LSI's DuraGrip™ polyester powder coat finishing process. The DuraGrip finish withstands extreme weather changes without cracking or peeling. Other standard LSI finishes available. Consult factory.
- Total harmonic distortion: <20%
- Operating temperature: -40°C to +50°C (-40°F to 122°F). 42L lumen package rated to +60°C.
- Power factor: > 0.90
- Input power stays constant over life.
- Field replaceable 10kV surge protection device meets a minimum Category C Low operation (per ANSI/IEEE C62.41.2).
- Title 24 Compliant; see local ordinance for qualification information.
- IP66 rated luminaire per IEC 60598.
- 3G rated for ANSI C136.3 high vibration applications.
- IP66 rated Luminaire per IEC 60598.
- 3G rated for ANSI C136.3 high vibration applications are qualified.

Electrical

- High-performance programmable driver features over-voltage, under-voltage, short-circuit and over-temperature protection.
- 0-10V dimming (10% - 100%) standard.
- Standard Universal Voltage (120-277 Vac) Input 50/60 Hz or optional High Voltage (347-480 Vac).
- LSI Calculated Life: >100K Hours (See Lumen Maintenance on Page 2)

Installation

- Installs in a 12" or 16" deep can.
- Four fasteners are provided with the fixture for using deck, metallic canopy substrates only when classified as suitable for use by installing professional otherwise suitable fasteners should be provided by others.
- Unit is designed to quickly retrofit into existing Scottsdale® (47) hole.

LSI Industries Inc. 10000 Alliance Rd. Cincinnati, OH 45242 • www.lsi-industries.com
(513) 372-3200 • ©2020 LSI Industries Inc. All Rights Reserved. Specifications subject to change without notice.
Page 1/9 Rev. 18/21/20
SPEC.1033.A.0430

Accessory Ordering Information*

Controls Accessories

Recessed Panel Kit (206-277) for use with CRP	12014
Recessed Panel Kit (206-277) for use with CRP	12015
Recessed Panel Kit (247V) for use with CRP	12016
Recessed Panel Kit (247V) for use with CRP	12018
LSI 3 Pin Test Lead Controller	66149
Recessed Panel Kit (247V)	66150
Recessed Panel Kit (247V)	66151
Recessed Panel Kit (247V)	66152
Recessed Panel Kit (247V)	66153
Recessed Panel Kit (247V)	66154
Recessed Panel Kit (247V)	66155
Recessed Panel Kit (247V)	66156
Recessed Panel Kit (247V)	66157
Recessed Panel Kit (247V)	66158
Recessed Panel Kit (247V)	66159
Recessed Panel Kit (247V)	66160
Recessed Panel Kit (247V)	66161
Recessed Panel Kit (247V)	66162
Recessed Panel Kit (247V)	66163
Recessed Panel Kit (247V)	66164
Recessed Panel Kit (247V)	66165
Recessed Panel Kit (247V)	66166
Recessed Panel Kit (247V)	66167
Recessed Panel Kit (247V)	66168
Recessed Panel Kit (247V)	66169
Recessed Panel Kit (247V)	66170
Recessed Panel Kit (247V)	66171
Recessed Panel Kit (247V)	66172
Recessed Panel Kit (247V)	66173
Recessed Panel Kit (247V)	66174
Recessed Panel Kit (247V)	66175
Recessed Panel Kit (247V)	66176
Recessed Panel Kit (247V)	66177
Recessed Panel Kit (247V)	66178
Recessed Panel Kit (247V)	66179
Recessed Panel Kit (247V)	66180
Recessed Panel Kit (247V)	66181
Recessed Panel Kit (247V)	66182
Recessed Panel Kit (247V)	66183
Recessed Panel Kit (247V)	66184
Recessed Panel Kit (247V)	66185
Recessed Panel Kit (247V)	66186
Recessed Panel Kit (247V)	66187
Recessed Panel Kit (247V)	66188
Recessed Panel Kit (247V)	66189
Recessed Panel Kit (247V)	66190
Recessed Panel Kit (247V)	66191
Recessed Panel Kit (247V)	66192
Recessed Panel Kit (247V)	66193
Recessed Panel Kit (247V)	66194
Recessed Panel Kit (247V)	66195
Recessed Panel Kit (247V)	66196
Recessed Panel Kit (247V)	66197
Recessed Panel Kit (247V)	66198
Recessed Panel Kit (247V)	66199
Recessed Panel Kit (247V)	66200
Recessed Panel Kit (247V)	66201
Recessed Panel Kit (247V)	66202
Recessed Panel Kit (247V)	66203
Recessed Panel Kit (247V)	66204
Recessed Panel Kit (247V)	66205
Recessed Panel Kit (247V)	66206
Recessed Panel Kit (247V)	66207
Recessed Panel Kit (247V)	66208
Recessed Panel Kit (247V)	66209
Recessed Panel Kit (247V)	66210
Recessed Panel Kit (247V)	66211
Recessed Panel Kit (247V)	66212
Recessed Panel Kit (247V)	66213
Recessed Panel Kit (247V)	66214
Recessed Panel Kit (247V)	66215
Recessed Panel Kit (247V)	66216
Recessed Panel Kit (247V)	66217
Recessed Panel Kit (247V)	66218
Recessed Panel Kit (247V)	66219
Recessed Panel Kit (247V)	66220
Recessed Panel Kit (247V)	66221
Recessed Panel Kit (247V)	66222
Recessed Panel Kit (247V)	66223
Recessed Panel Kit (247V)	66224
Recessed Panel Kit (247V)	66225
Recessed Panel Kit (247V)	66226
Recessed Panel Kit (247V)	66227
Recessed Panel Kit (247V)	66228
Recessed Panel Kit (247V)	66229
Recessed Panel Kit (247V)	66230
Recessed Panel Kit (247V)	66231
Recessed Panel Kit (247V)	66232
Recessed Panel Kit (247V)	66233
Recessed Panel Kit (247V)	66234
Recessed Panel Kit (247V)	66235
Recessed Panel Kit (247V)	66236
Recessed Panel Kit (247V)	66237
Recessed Panel Kit (247V)	66238
Recessed Panel Kit (247V)	66239
Recessed Panel Kit (247V)	66240
Recessed Panel Kit (247V)	66241
Recessed Panel Kit (247V)	66242
Recessed Panel Kit (247V)	66243
Recessed Panel Kit (247V)	66244
Recessed Panel Kit (247V)	66245
Recessed Panel Kit (247V)	66246
Recessed Panel Kit (247V)	66247
Recessed Panel Kit (247V)	66248
Recessed Panel Kit (247V)	66249
Recessed Panel Kit (247V)	66250
Recessed Panel Kit (247V)	66251
Recessed Panel Kit (247V)	66252
Recessed Panel Kit (247V)	66253
Recessed Panel Kit (247V)	66254
Recessed Panel Kit (247V)	66255
Recessed Panel Kit (247V)	66256
Recessed Panel Kit (247V)	66257
Recessed Panel Kit (247V)	66258
Recessed Panel Kit (247V)	66259
Recessed Panel Kit (247V)	66260
Recessed Panel Kit (247V)	66261
Recessed Panel Kit (247V)	66262
Recessed Panel Kit (247V)	66263
Recessed Panel Kit (247V)	66264
Recessed Panel Kit (247V)	66265
Recessed Panel Kit (247V)	66266
Recessed Panel Kit (247V)	66267
Recessed Panel Kit (247V)	66268
Recessed Panel Kit (247V)	66269
Recessed Panel Kit (247V)	66270
Recessed Panel Kit (247V)	66271

