

No.	Date	Description
1	5-24-22	CITY REVIEW
2	7-13-22	CITY REVIEW
3	10-13-22	CITY REVIEW
4	10-26-22	CITY REVIEW

NOTE:
 Bid documents should not be separated or issued as partial sets to subcontractors. Bidders are responsible for all portions of the documents that pertain to work covered by sub-bids. Bidder assumes full responsibility for error or misinterpretations resulting from partial sets of Bidding Documents by itself or any sub-bidder.

Conflicting information or errors found in the construction documents should be brought to the attention of the architect immediately. In the event of a conflict in the drawings, bidder should not assume the least expensive option will meet the project requirements.



MAVERIK INC. STORE
 LINCOLN AVE. AND DRANSFELDT RD.
 PARKER, CO

EDCI
 ENGINEERS
 1331 17TH STREET SUITE 605
 DENVER, COLORADO 80202
 PHONE: (720) 439-4700
 WEBSITE: www.edci-engineers.com
 CIVIL / STRUCTURAL
© Copyright 11/2022 EDCI Engineers Inc. All Rights Reserved.



NO CHANGES ARE TO BE MADE TO THIS DRAWING WITHOUT WRITTEN PERMISSION OF THE TOWN OF PARKER.

TRENCH EXCAVATION

STRAW BALE INSTALLATION

SECTION

SB STRAW BALE

CBMP CONSTRUCTION BEST MANAGEMENT PRACTICES **SB** 1 OF 2 Oct. 2013

NO CHANGES ARE TO BE MADE TO THIS DRAWING WITHOUT WRITTEN PERMISSION OF THE TOWN OF PARKER.

CROSS SECTION

COMPLETED ROCK SOCK

JOINT PLAN VIEW

JOINT ELEVATION

RS ROCK SOCK

CBMP CONSTRUCTION BEST MANAGEMENT PRACTICES **RS** 1 OF 2 Oct. 2013

NO CHANGES ARE TO BE MADE TO THIS DRAWING WITHOUT WRITTEN PERMISSION OF THE TOWN OF PARKER.

ROUGH CUT STREET CONTROL INSTALLATION NOTES

- SEE CBMP PLAN FOR LOCATION(S) OF ROUGH CUT STREET CONTROL.
- THE SPACING OF THE ROUGH CUT STREET CONTROL MAY BE DETERMINED BY THE DESIGN ENGINEER AND SHOWN ON THE CBMP PLAN.

ROUGH CUT STREET CONTROL INSPECTION AND MAINTENANCE NOTES

- THE EROSION CONTROL SUPERVISOR SHALL REGULARLY INSPECT THE ROUGH CUT STREET CONTROL.
- ACCUMULATED SEDIMENT SHALL BE REMOVED WHEN THE SEDIMENT DEPTH IS 1/2 THE HEIGHT OF THE ROCK SOCK.
- ROUGH CUT STREET CONTROL SHALL BE REPAIRED IMMEDIATELY FOLLOWING ANY SIGN OF WEAR OR ALTERATION OF THE ORIGINAL SHAPE AND DIMENSIONS.
- ROUGH CUT STREET CONTROL SHALL BE KEPT IN PLACE AND MAINTAINED UNTIL SUB-GRADE PREPARATION BEGINS FOR PAVING. AT THAT POINT, THE RCSC SHOULD BE REMOVED IN INCREMENTS BASED ON SUBGRADE PREPARATION.

CBMP CONSTRUCTION BEST MANAGEMENT PRACTICES **RCSC** 2 OF 2 Oct. 2013

NO CHANGES ARE TO BE MADE TO THIS DRAWING WITHOUT WRITTEN PERMISSION OF THE TOWN OF PARKER.

PLAN VIEW

SECTION A

RCSC ROUGH CUT STREET CONTROL

CBMP CONSTRUCTION BEST MANAGEMENT PRACTICES **RCSC** 1 OF 2 Oct. 2013

NO CHANGES ARE TO BE MADE TO THIS DRAWING WITHOUT WRITTEN PERMISSION OF THE TOWN OF PARKER.

SIDEWALK TRANSITION PROTECTION INSTALLATION NOTES

- SEE PLAN VIEW FOR LOCATION(S) OF SIDEWALK TRANSITION PROTECTION.
- ROCK SOCK SHALL BE CONSTRUCTED ACCORDING TO THE DETAIL (SEE DETAIL RS).
- SILT FENCE SHALL BE CONSTRUCTED ACCORDING TO THE DETAIL (SEE DETAIL SF).
- CONSTRUCTION FENCE SHALL BE CONSTRUCTED ACCORDING TO THE DETAIL (SEE DETAIL CF).
- SEDIMENT CONTROL LOGS MAY BE USED IN LIEU OF SILT FENCE WITH PRIOR APPROVAL FROM THE TOWN.

SIDEWALK TRANSITION PROTECTION INSPECTION & MAINTENANCE NOTES

- THE EROSION CONTROL SUPERVISOR SHALL REGULARLY INSPECT THE SIDEWALK TRANSITION INSPECTION.

CBMP CONSTRUCTION BEST MANAGEMENT PRACTICES **STP** 3 OF 3 Oct. 2013

NO CHANGES ARE TO BE MADE TO THIS DRAWING WITHOUT WRITTEN PERMISSION OF THE TOWN OF PARKER.

STP SIDEWALK TRANSITION PROTECTION (ALONG STRAIGHT ROADWAY)

CBMP CONSTRUCTION BEST MANAGEMENT PRACTICES **STP** 2 OF 3 Oct. 2013

NO CHANGES ARE TO BE MADE TO THIS DRAWING WITHOUT WRITTEN PERMISSION OF THE TOWN OF PARKER.

STP SIDEWALK TRANSITION PROTECTION (AT INTERSECTION)

CBMP CONSTRUCTION BEST MANAGEMENT PRACTICES **STP** 1 OF 3 Oct. 2013

NO CHANGES ARE TO BE MADE TO THIS DRAWING WITHOUT WRITTEN PERMISSION OF THE TOWN OF PARKER.

STRAW BALE INSTALLATION NOTES

- SEE CBMP PLAN FOR LOCATION(S) OF STRAW BALES.
- TYPICAL STRAW BALES SHALL BE APPROXIMATELY 36"x18"x18".
- TWO (2) WOODEN STAKES SHALL BE USED TO HOLD EACH BALE IN PLACE. WOODEN STAKES SHALL BE A MINIMUM OF 1"x1"x24".
- WOODEN STAKES SHALL BE PLACED APPROXIMATELY 6" INTO THE GROUND.
- STRAW BALES SHALL BE SPACED AND POSITIONED ACCORDING TO DETAILS.

STRAW BALE INSPECTION AND MAINTENANCE NOTES

- THE EROSION CONTROL SUPERVISOR SHALL REGULARLY INSPECT THE STRAW BALES.
- ACCUMULATED SEDIMENT SHALL BE REMOVED ONCE THE SEDIMENT HAS REACHED A DEPTH EQUAL TO 1/2 THE HEIGHT OF THE STRAW BALE.
- STRAW BALES MAY NEED TO BE REPLACED IF THEY BECOME HEAVILY SOILED, ROTTEN, OR OTHERWISE DAMAGED.
- STRAW BALES SHALL REMAIN IN PLACE AND PROPERLY MAINTAINED UNTIL VEGETATIVE COVER HAS REACHED A CONSISTENT DENSITY OF AT LEAST 70% OF FULL VEGETATIVE COVER AND EROSION AND SEDIMENTATION IS NO LONGER A POSSIBILITY AS DETERMINED BY THE TOWN'S INSPECTOR OR AS OTHERWISE DIRECTED BY THE TOWN INSPECTOR.
- WHEN THE STRAW BALES ARE REMOVED, ANY DISTURBED AREAS ASSOCIATED WITH THE INSTALLATION, MAINTENANCE, AND/OR REMOVAL OF THE STRAW BALES MAY NEED TO BE ROUGHENED, SEEDED, MULCHED, AND CRIMPED PER THE TOWN'S SPECIFICATIONS (SEE DETAIL SMC).

CBMP CONSTRUCTION BEST MANAGEMENT PRACTICES **SB** 2 OF 2 Oct. 2013

No.	Date	Description
1	5-24-22	CITY REVIEW
2	7-13-22	CITY REVIEW
3	10-13-22	CITY REVIEW
4	10-26-22	CITY REVIEW

NOTE:
 Bid documents should not be separated or issued as partial sets to subcontractors. Bidders are responsible for all portions of the documents that pertain to work covered by sub-bids. Bidder assumes full responsibility for error or misinterpretations resulting from partial sets of Bidding Documents by itself or any sub-bidder.

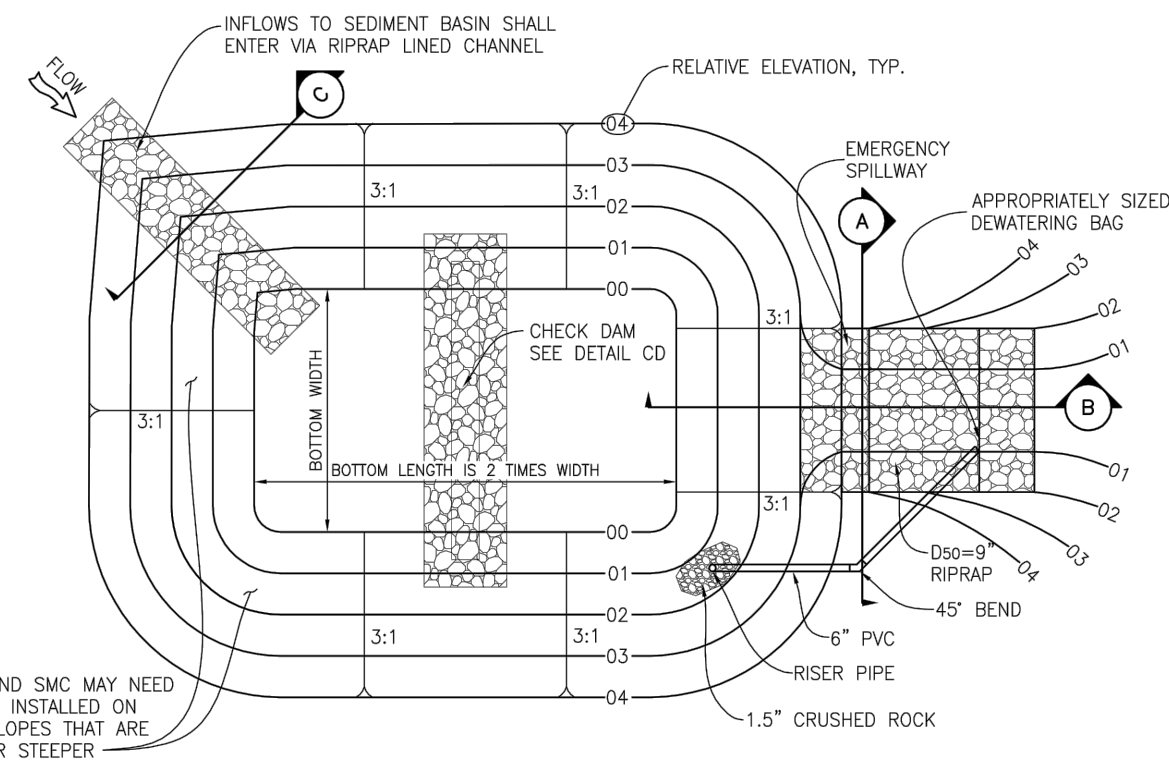
Conflicting information or errors found in the construction documents should be brought to the attention of the architect immediately. In the event of a conflict in the drawings, bidder should not assume the least expensive option will meet the project requirements.



MAVERIK INC. STORE
 LINCOLN AVE. AND DRANSFELDT RD.
 PARKER, CO

EDCI
 ENGINEERS
 1331 17TH STREET • SUITE 605
 DENVER, COLORADO 80202
 PHONE: (720) 439-4700
 WEBSITE: www.edci-engineers.com
 CIVIL / STRUCTURAL
© Copyright 11/2022 EDCI Engineers Inc. All Rights Reserved.
 EDCI is an Equal Opportunity Employer. Minorities and women are encouraged to apply.

NO CHANGES ARE TO BE MADE TO THIS DRAWING WITHOUT WRITTEN PERMISSION OF THE TOWN OF PARKER.



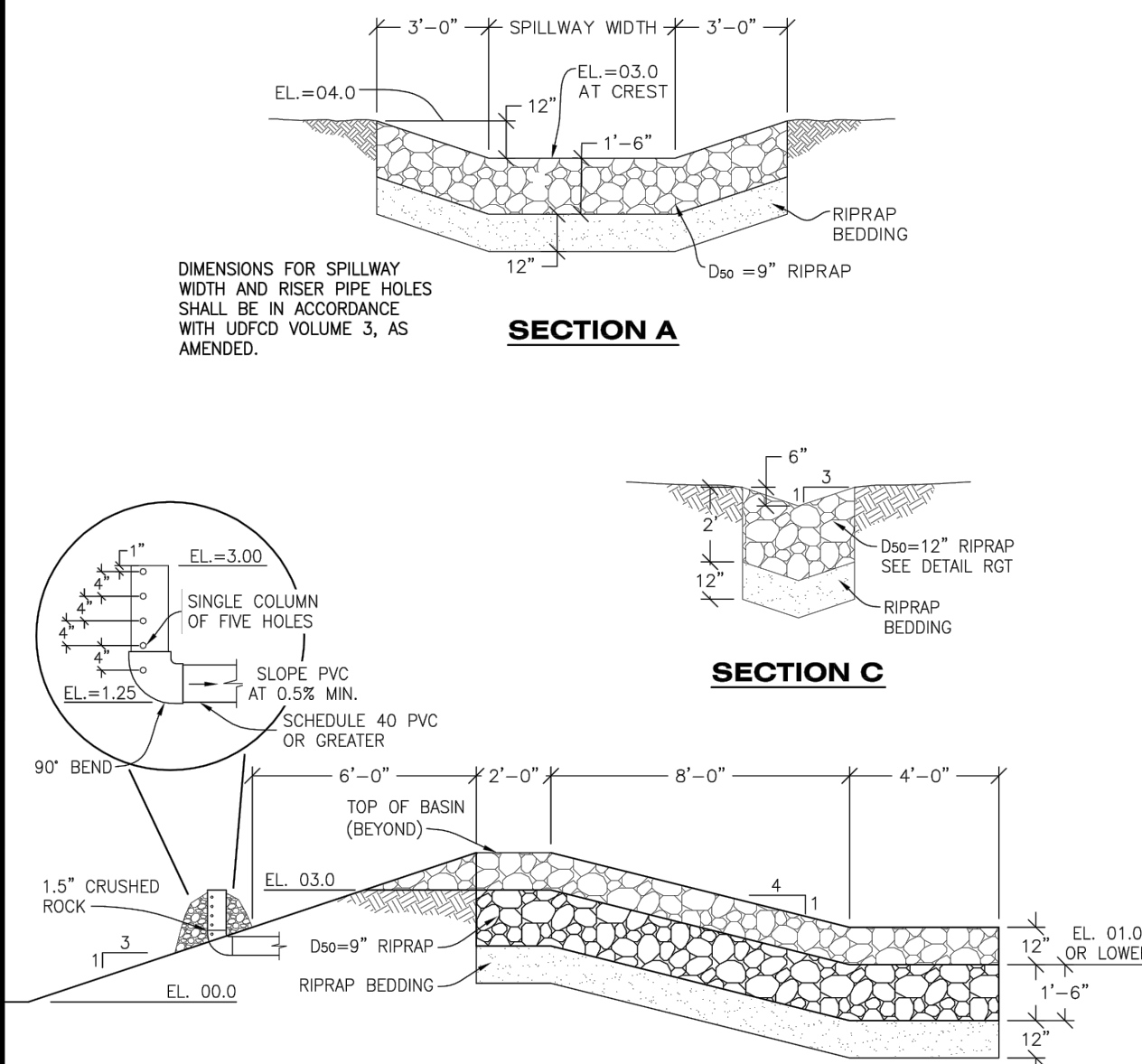
PLAN VIEW

SIZING OF TSB SHALL BE IN ACCORDANCE WITH UDFCD VOLUME 3, AS AMENDED.

TSB TEMPORARY SEDIMENT BASIN

Parker COLORADO | **CONSTRUCTION BEST MANAGEMENT PRACTICES** | **TSB**
 1 OF 3
 Oct. 2013

NO CHANGES ARE TO BE MADE TO THIS DRAWING WITHOUT WRITTEN PERMISSION OF THE TOWN OF PARKER.



SECTION A

SECTION C

SECTION B

TSB TEMPORARY SEDIMENT BASIN

Parker COLORADO | **CONSTRUCTION BEST MANAGEMENT PRACTICES** | **TSB**
 2 OF 3
 Oct. 2013

NO CHANGES ARE TO BE MADE TO THIS DRAWING WITHOUT WRITTEN PERMISSION OF THE TOWN OF PARKER.

TEMPORARY SEDIMENT BASIN INSTALLATION NOTES

- SEE CBMP PLAN FOR LOCATION(S) OF SEDIMENT BASIN(S).
- THE TEMPORARY SEDIMENT BASIN(S) SHALL BE INSTALLED AND FUNCTIONING PRIOR TO ANY OTHER GRADING ACTIVITIES.
- THE EXACT DIMENSIONS AND DETAILS OF THE TEMPORARY SEDIMENT BASIN SHALL BE DETERMINED BY THE DESIGN ENGINEER, IN ACCORDANCE WITH UDFCD VOLUME 3, AS AMENDED.
- EMBANKMENT MATERIAL SHALL CONSIST OF SOIL FREE OF DEBRIS, ORGANIC MATERIAL, AND ROCKS OR CONCRETE GREATER THAN 3" AND SHALL HAVE A MINIMUM OF 15% BY WEIGHT PASSING THE NO. 200 SIEVE.
- EMBANKMENT MATERIAL SHALL BE COMPACTED TO A MINIMUM OF 95% DENSITY, AND WITHIN +/- 2% OF OPTIMUM MOISTURE IN ACCORDANCE WITH ASTM D698.
- AN APPROPRIATELY SIZED DEWATERING BAG SHALL BE SECURED TO THE END OF THE DISCHARGE PIPE. THE DEWATERING BAG SHALL BE REPLACED ONCE SEDIMENT ACCUMULATION REACHES 50%.

TEMPORARY SEDIMENT BASIN INSPECTION AND MAINTENANCE NOTES

- THE EROSION CONTROL SUPERVISOR SHALL REGULARLY INSPECT THE TEMPORARY SEDIMENT BASIN.
- ACCUMULATED SEDIMENT SHALL BE REMOVED WHEN THE SEDIMENT REACHES A DEPTH OF 2.0', OR WITHIN 2.0' OF THE SPILLWAY CREST, OR AS OTHERWISE DIRECTED BY THE TOWN'S INSPECTOR.
- SEDIMENT BASINS SHALL REMAIN IN PLACE AND PROPERLY MAINTAINED UNTIL UPSTREAM VEGETATIVE COVER HAS REACHED A CONSISTENT DENSITY OF AT LEAST 70% OF FULL VEGETATIVE COVER AND EROSION AND SEDIMENTATION IS NO LONGER A POSSIBILITY AS DETERMINED BY THE TOWN'S INSPECTOR.

Parker COLORADO | **CONSTRUCTION BEST MANAGEMENT PRACTICES** | **TSB**
 3 OF 3
 Oct. 2013



No.	Date	Description
1	5-24-22	CITY REVIEW
2	7-13-22	CITY REVIEW
3	10-13-22	CITY REVIEW
4	10-26-22	CITY REVIEW

NOTE: Bid documents should not be separated or issued as partial sets to subcontractors. Bidders are responsible for all portions of the documents that pertain to work covered by sub-bids. Bidder assumes full responsibility for error or misinterpretations resulting from partial sets of Bidding Documents by itself or any sub-bidder.

Conflicting information or errors found in the construction documents should be brought to the attention of the architect immediately. In the event of a conflict in drawings, bidder should not assume the least expensive option will meet the project requirements.

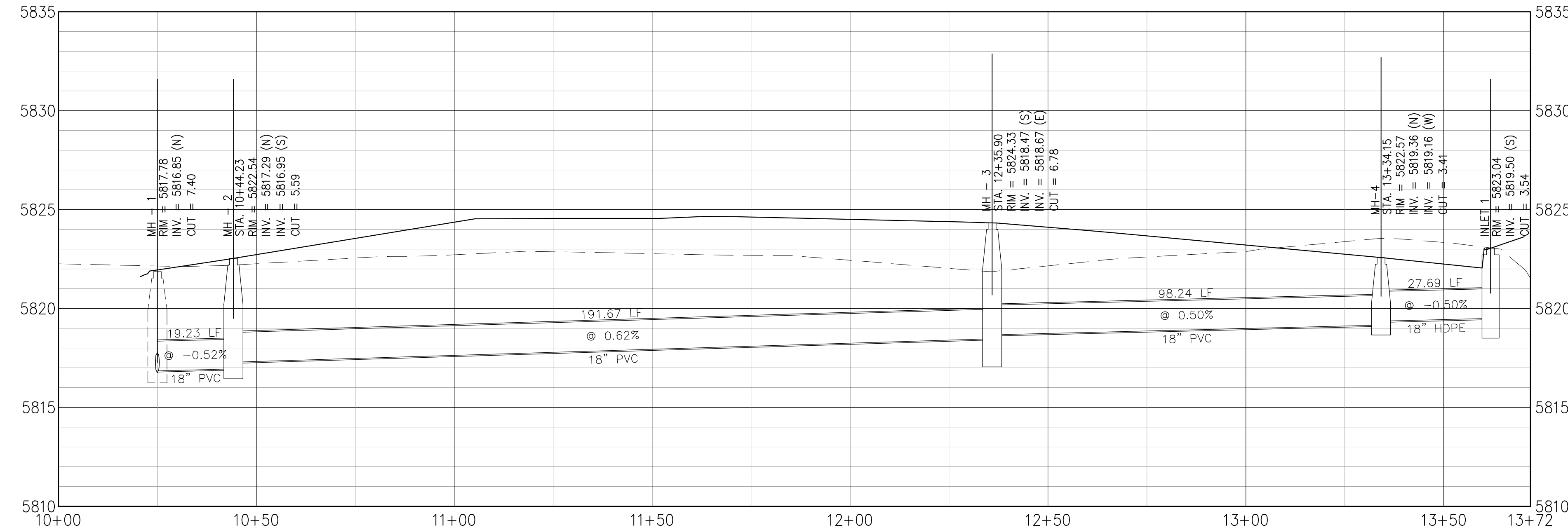
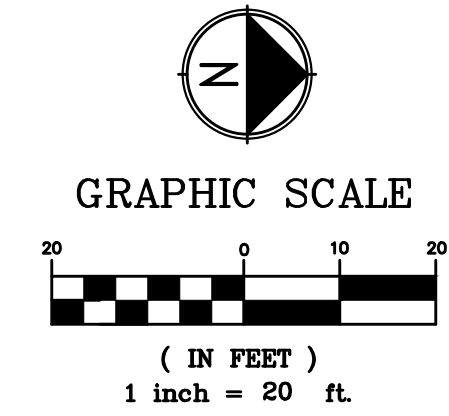
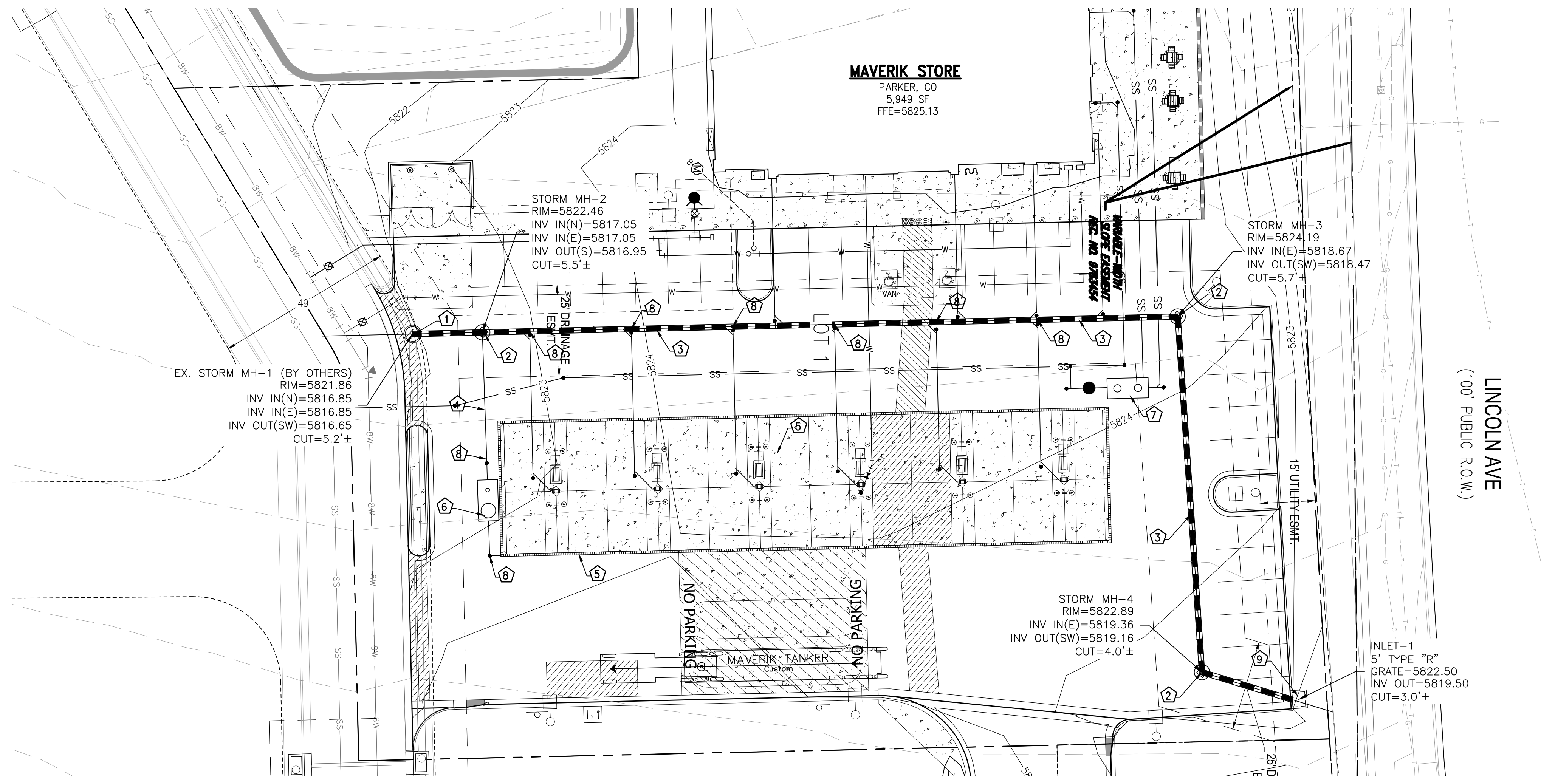


MAVERIK INC. STORE
 LINCOLN AVE. AND DRANSFELDT RD.
 PARKER, CO

EDCI ENGINEERS
 1331 17TH STREET • SUITE 605
 DENVER, COLORADO 80202
 PHONE: (720) 439-4700
 WEBSITE: www.edci-engineers.com
 CIVIL / STRUCTURAL
 © Copyright 2022 EDCI Engineers, All Rights Reserved.

STORM DRAIN NOTES:

- 1 CONNECT TO EXISTING STORM DRAIN MANHOLE BY OTHERS.
- 2 INSTALL 48" STORM DRAIN MANHOLE
- 3 NEW 18" PVC SDR-35 STORM DRAIN PIPE.
- 4 NEW 6" PVC SDR-35 STORM DRAIN PIPE.
- 5 NEW 8" NDS FILCOTEN PRO V 200 TRENCH DRAIN.
- 6 NEW SPILL CONTROL STRUCTURE
- 7 NEW 1,500 GALLON GREASE INTERCEPTOR.
- 8 NEW STORM DRAIN CLEAN OUT
- 9 NEW 5' TYPE "R" CURB INLET PER CDOT STANDARD PLAN NO. M-604-12.



THE TOWN OF PARKER REVIEW CONSTITUTES GENERAL COMPLIANCE WITH THE TOWN'S STANDARDS AND APPROVED VARIANCES, SUBJECT TO THESE PLANS BEING STAMPED, SIGNED, AND DATED BY THE PROFESSIONAL ENGINEER OF RECORD. REVIEW BY THE TOWN DOES NOT CONSTITUTE APPROVAL OF THE PLAN DESIGN OR ACCURACY AND CORRECTNESS OF ENGINEERING CALCULATIONS. ERRORS IN THE DESIGN OR CALCULATIONS REMAIN THE RESPONSIBILITY OF THE REGISTERED PROFESSIONAL ENGINEER WHOSE STAMP AND SIGNATURE ARE AFFIXED TO THIS DOCUMENT.

THIS REVIEW DOES NOT CONSTITUTE APPROVAL OF ANY PRIVATE ON-SITE IMPROVEMENTS WHICH MAY BE SHOWN. CONSTRUCTION CANNOT COMMENCE UNTIL ALL REQUIRED DRAINAGE/TRAFFIC REPORT(S), FINAL DEVELOPMENT PLAN(S), SPECIAL REVIEW(S), GRADING PERMIT, AND/OR OTHER PERMITS ARE COMPLETE, APPROVED AND ON FILE WITH THE TOWN OF PARKER.

TOWN OF PARKER, DIRECTOR OF ENGINEERING _____ DATE _____

CONTRACTOR NOTE:

ALL EXISTING UTILITIES SHOWN ON PLANS ARE TO BE VERIFIED HORIZONTALLY AND VERTICALLY PRIOR TO ANY CONSTRUCTION. ALL EXISTING FEATURES INCLUDING BURIED UTILITIES ARE SHOWN AS INDICATED ON RECORD MAPS AND SURVEYS FURNISHED BY OTHERS. WE ASSUME NO LIABILITY FOR THE ACCURACY OF THOSE RECORDS AND SURVEYS. CONTACT THE UTILITY OWNER/AGENCY FOR THE FINAL LOCATION OF EXISTING UTILITIES IN AREAS CRITICAL TO CONSTRUCTION.



No.	Date	Description
1	5-24-22	CITY REVIEW
2	7-13-22	CITY REVIEW
3	10-13-22	CITY REVIEW
4	10-26-22	CITY REVIEW

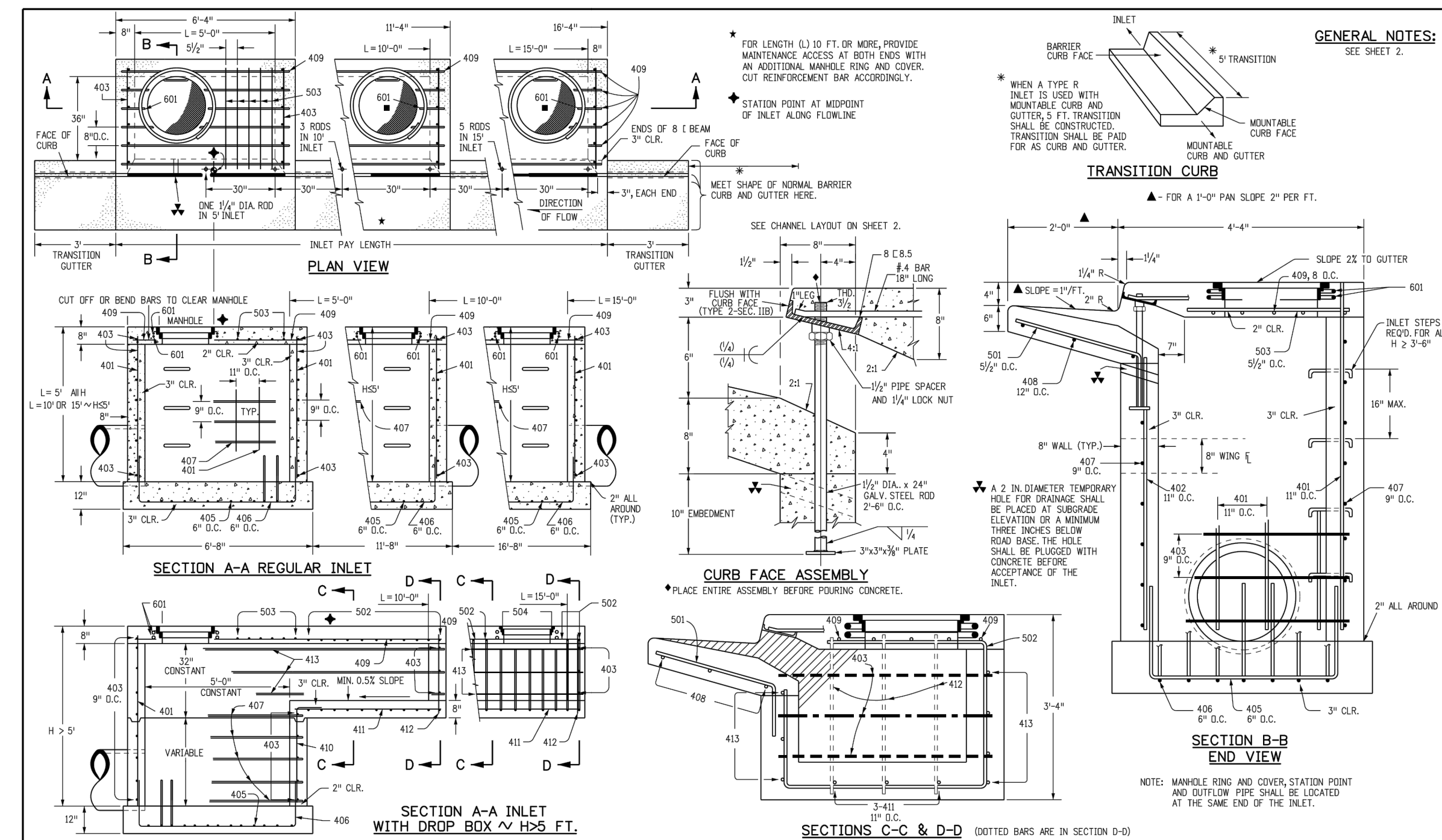
NOTE: Bid documents should not be separated or issued as partial sets to subcontractors. Bidders are responsible for all portions of the documents that pertain to work covered by sub-bids. Bidder assumes full responsibility for error or misinterpretations resulting from partial sets of Bidding Documents by itself or any sub-bidder.

Conflicting information or errors found in the construction documents should be brought to the attention of the architect immediately. In the event of a conflict in drawings, bidder should not assume the least expensive option will meet the project requirements.

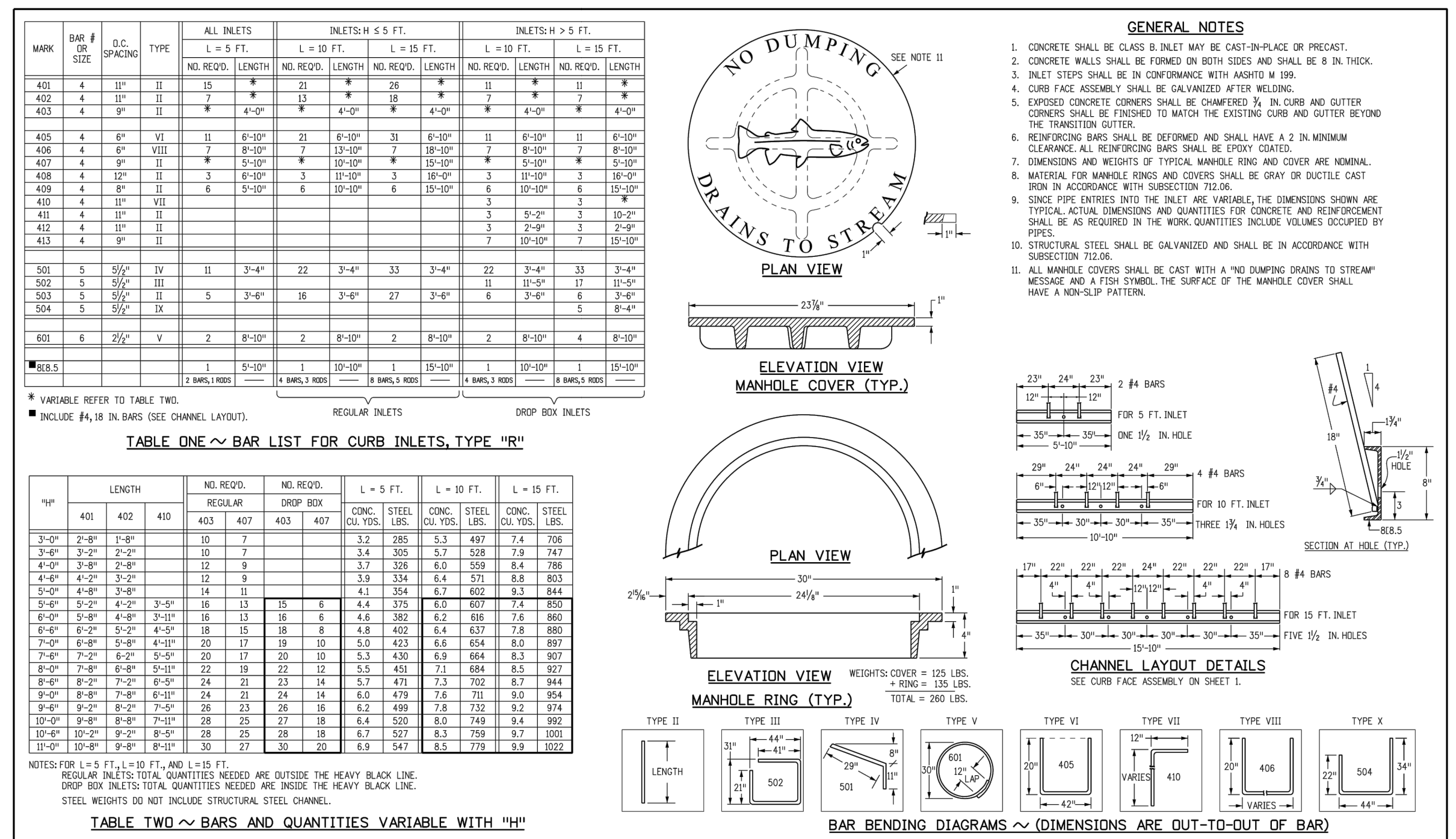


MAVERIK INC. STORE
LINCOLN AVE. AND DRANSFELDT RD.
PARKER, CO

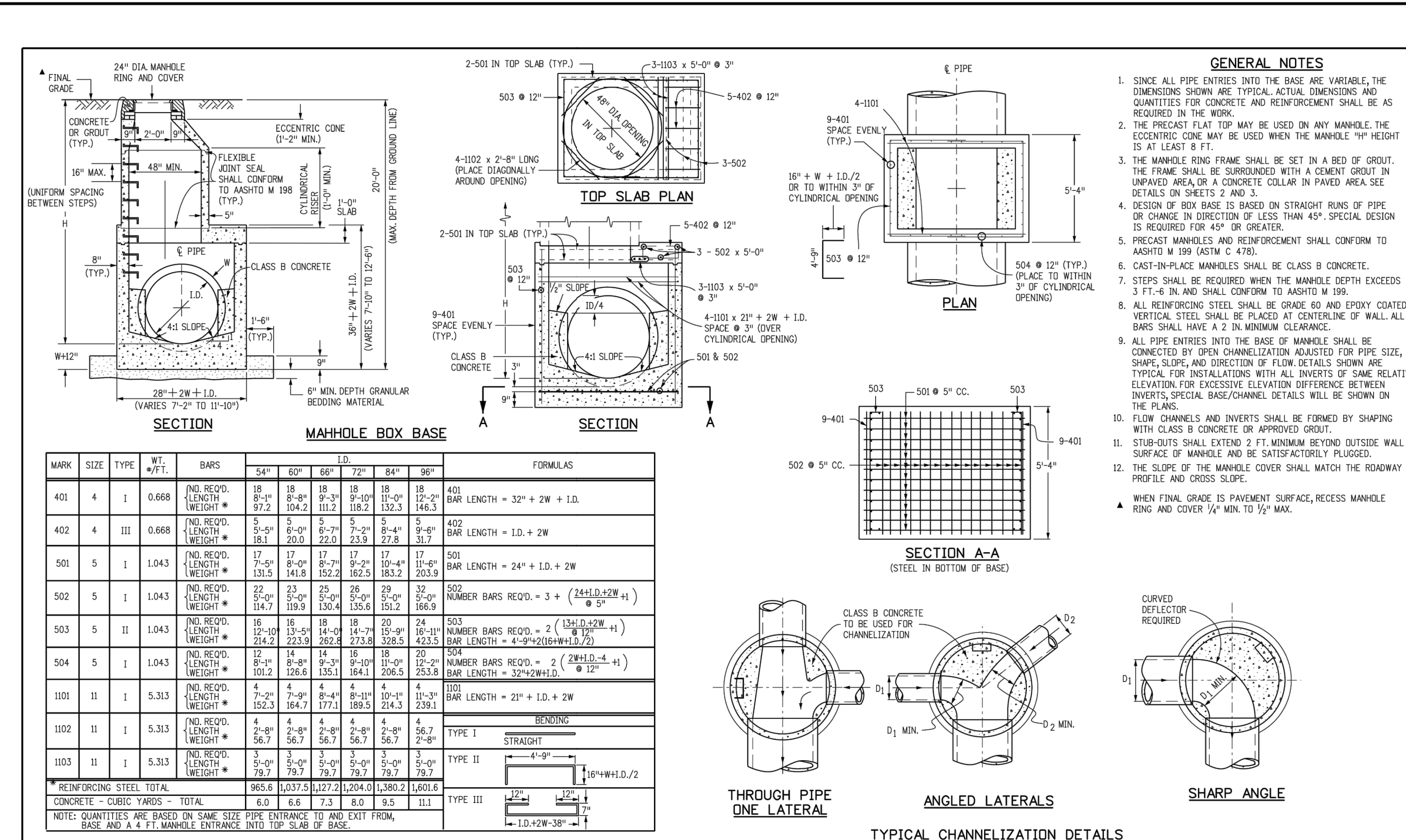
EDCI
ENGINEERS
 1331 17TH STREET • SUITE 605
 DENVER, COLORADO 80202
 PHONE: (720) 439-4700
 WEBSITE: www.edci-engineers.com
 CMAA / STRUCTURAL
 © Copyright 2022 Edci Engineers Inc. All Rights Reserved.



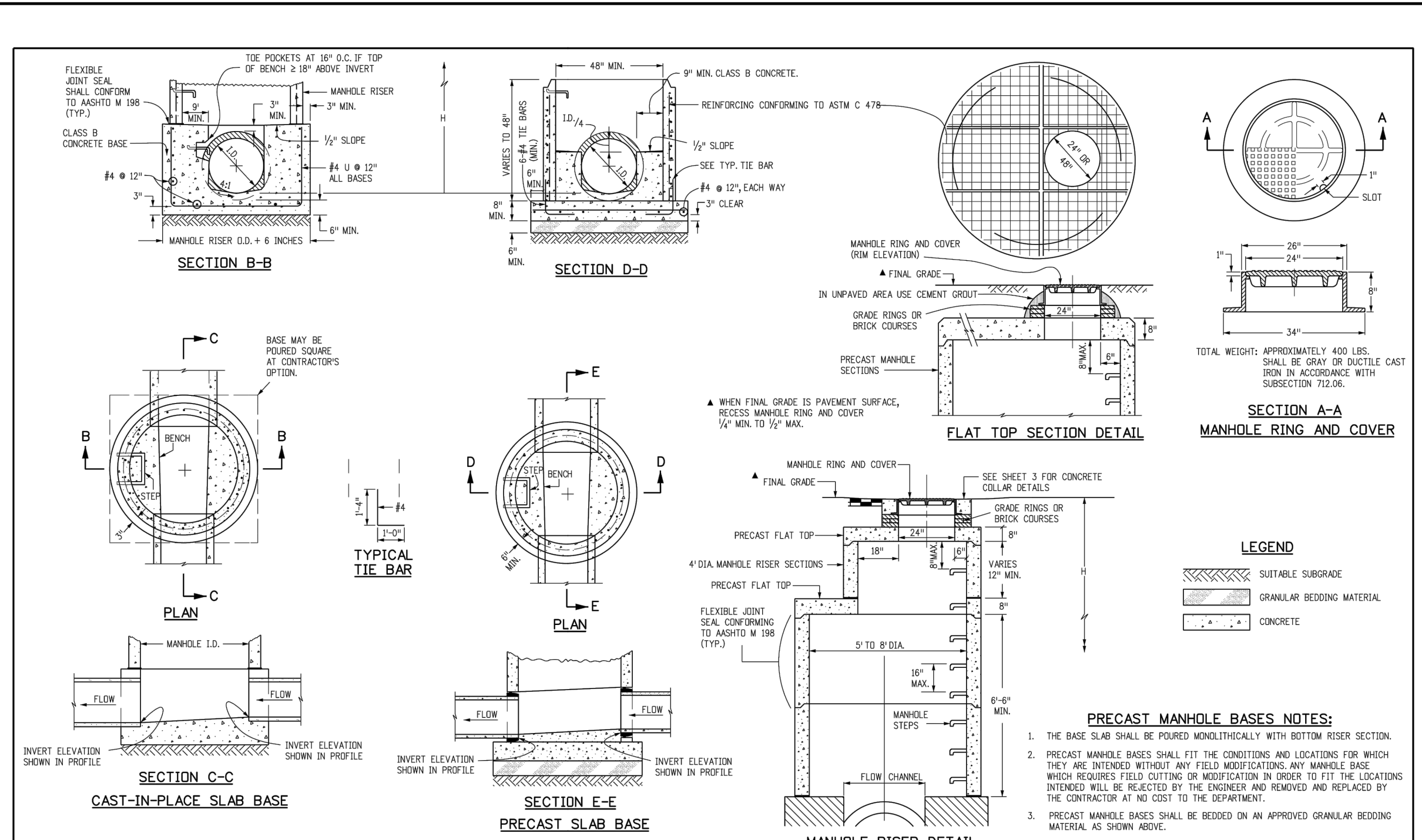
Computer File Information	Sheet Revisions	Colorado Department of Transportation	STANDARD PLAN NO.
Creation Date: 07/04/12 Last Modification Date: 07/04/12 Full Path: www.coloradodot.info/business/designsupport Drawing File Name: 6040120202.dgn CAD Ver: MicroStation V8 - Scale: Not to Scale - Units: English	Date: _____ Comments: _____	4201 East Arkansas Avenue Denver, Colorado 80222 Phone: (303) 757-9003 Fax: (303) 757-9020 Project Development Branch DD/LTA	M-604-12 Sheet No. 1 of 2



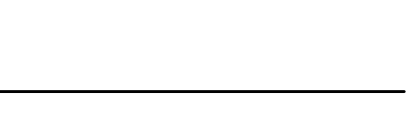
Computer File Information	Sheet Revisions	Colorado Department of Transportation	STANDARD PLAN NO.
Creation Date: 07/04/12 Last Modification Date: 07/04/12 Full Path: www.coloradodot.info/business/designsupport Drawing File Name: 6040120202.dgn CAD Ver: MicroStation V8 - Scale: Not to Scale - Units: English	Date: _____ Comments: _____	4201 East Arkansas Avenue Denver, Colorado 80222 Phone: (303) 757-9003 Fax: (303) 757-9020 Project Development Branch DD/LTA	M-604-12 Sheet No. 2 of 2



Computer File Information	Sheet Revisions	Colorado Department of Transportation	STANDARD PLAN NO.
Creation Date: 07/04/12 Last Modification Date: 07/04/12 Full Path: www.coloradodot.info/business/designsupport Drawing File Name: M0604200203.dgn CAD Ver: MicroStation V8 - Scale: Not to Scale - Units: English	Date: _____ Comments: _____	4201 East Arkansas Avenue Denver, Colorado 80222 Phone: (303) 757-9003 Fax: (303) 757-9020 Project Development Branch DD/LTA	M-604-20 Sheet No. 1 of 3



Computer File Information	Sheet Revisions	Colorado Department of Transportation	STANDARD PLAN NO.
Creation Date: 07/04/12 Last Modification Date: 07/04/12 Full Path: www.coloradodot.info/business/designsupport Drawing File Name: M0604200203.dgn CAD Ver: MicroStation V8 - Scale: Not to Scale - Units: English	Date: _____ Comments: _____	4201 East Arkansas Avenue Denver, Colorado 80222 Phone: (303) 757-9003 Fax: (303) 757-9020 Project Development Branch DD/LTA	M-604-20 Sheet No. 2 of 3



No.	Date	Description
1	5-24-22	CITY REVIEW
2	7-13-22	CITY REVIEW
3	10-13-22	CITY REVIEW
4	10-26-22	CITY REVIEW

NOTE:
 Bid documents should not be separated or issued as partial sets to subcontractors. Bidders are responsible for all portions of the documents that pertain to work covered by sub-bids. Bidder assumes full responsibility for error or misinterpretations resulting from partial sets of Bidding Documents by itself or any sub-bidder.

Conflicting information or errors found in the construction documents should be brought to the attention of the architect immediately. In the event of a conflict in the drawings, bidder should not assume the least expensive option will meet the project requirements.



MAVERIK INC. STORE
LINCOLN AVE. AND DRANSFELDT RD.
PARKER, CO



1331 17TH STREET • SUITE 605
 DENVER, COLORADO 80202
 PHONE: (720) 439-4700
 WEBSITE: www.edci-engineers.com
 CIVIL / STRUCTURAL
 © Copyright 11/2022 Edci Engineers Inc. All Rights Reserved

