

# LINCOLN PROFESSIONAL PARK FILING NO. 1 LOT 1 MAVERIK INC. STORE SITE PLAN

SITUATED IN THE NORTHWEST 1/4 OF SECTION 15,  
TOWNSHIP 6 SOUTH, RANGE 66 WEST OF THE 6TH P.M.  
TOWN OF PARKER, COUNTY OF DOUGLAS, STATE OF COLORADO

PROJECT NUMBER

21-122-0001

ISSUE DATE:

March 10, 2022

REVISIONS:

No.	Date	Description
1	5-24-22	CITY REVIEW
2	7-13-22	CITY REVIEW
3	10-19-22	CITY REVIEW
4	10-22	CITY REVIEW

NOTE:  
Bid documents should not be separated or issued as partial sets to subcontractors. Bidders are responsible for all portions of the documents that pertain to work covered by sub-bids. Bidder assumes full responsibility for error or misinterpretations resulting from partial sets of Bidding Documents by itself or any sub-bidder.

Conflicting information or errors found in the construction documents should be brought to the attention of the architect immediately. In the event of a conflict in the drawings, bidder should not assume the least expensive option will meet the project requirements.



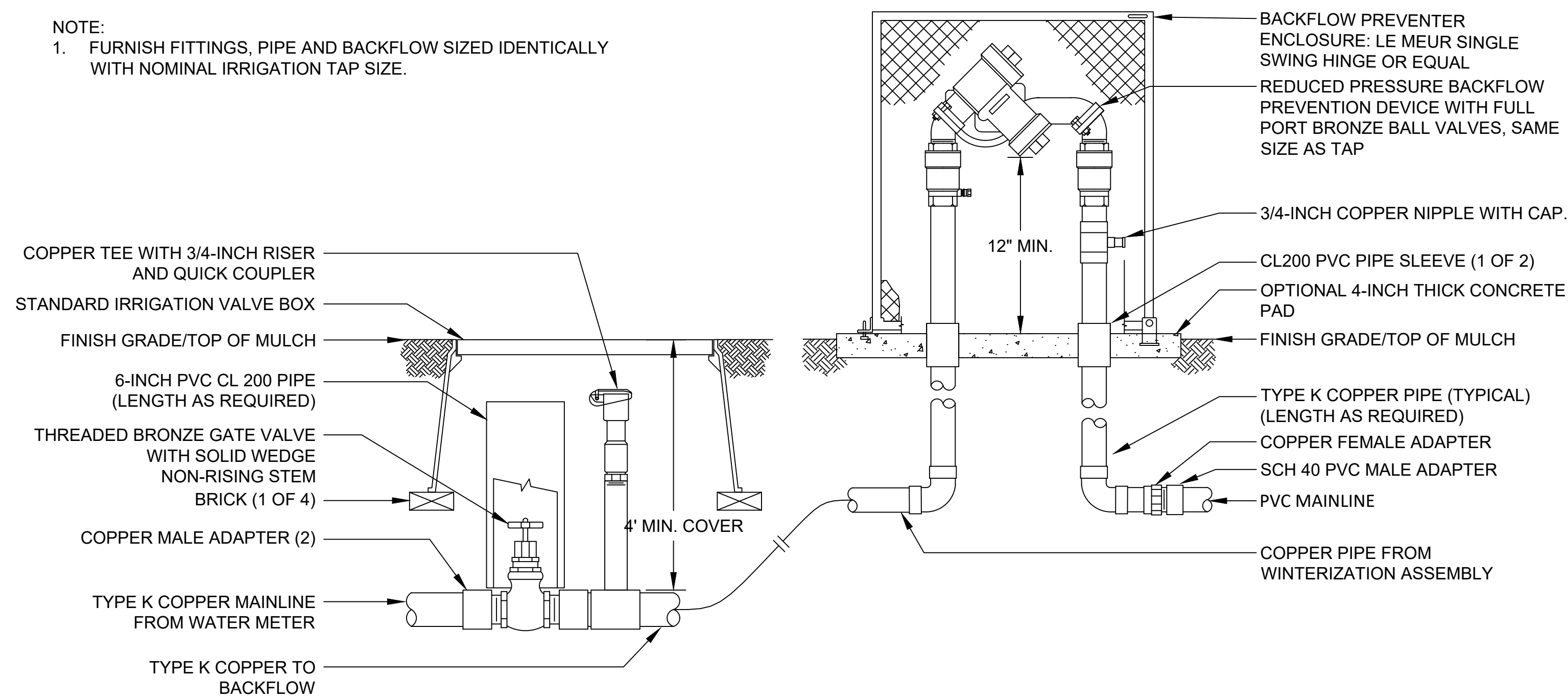
MAVERIK INC. STORE  
LINCOLN AVE. AND DRANSFELDT RD.  
PARKER, CO  
SITE PLAN

**EDCI**  
ENGINEERS  
1331 17TH STREET • SUITE 605  
DENVER, COLORADO 80202  
PHONE: (720) 439-4700  
WEBSITE: www.edci-engineers.com  
CIVIL / STRUCTURAL  
© Copyright 1970-2022. All Rights Reserved.

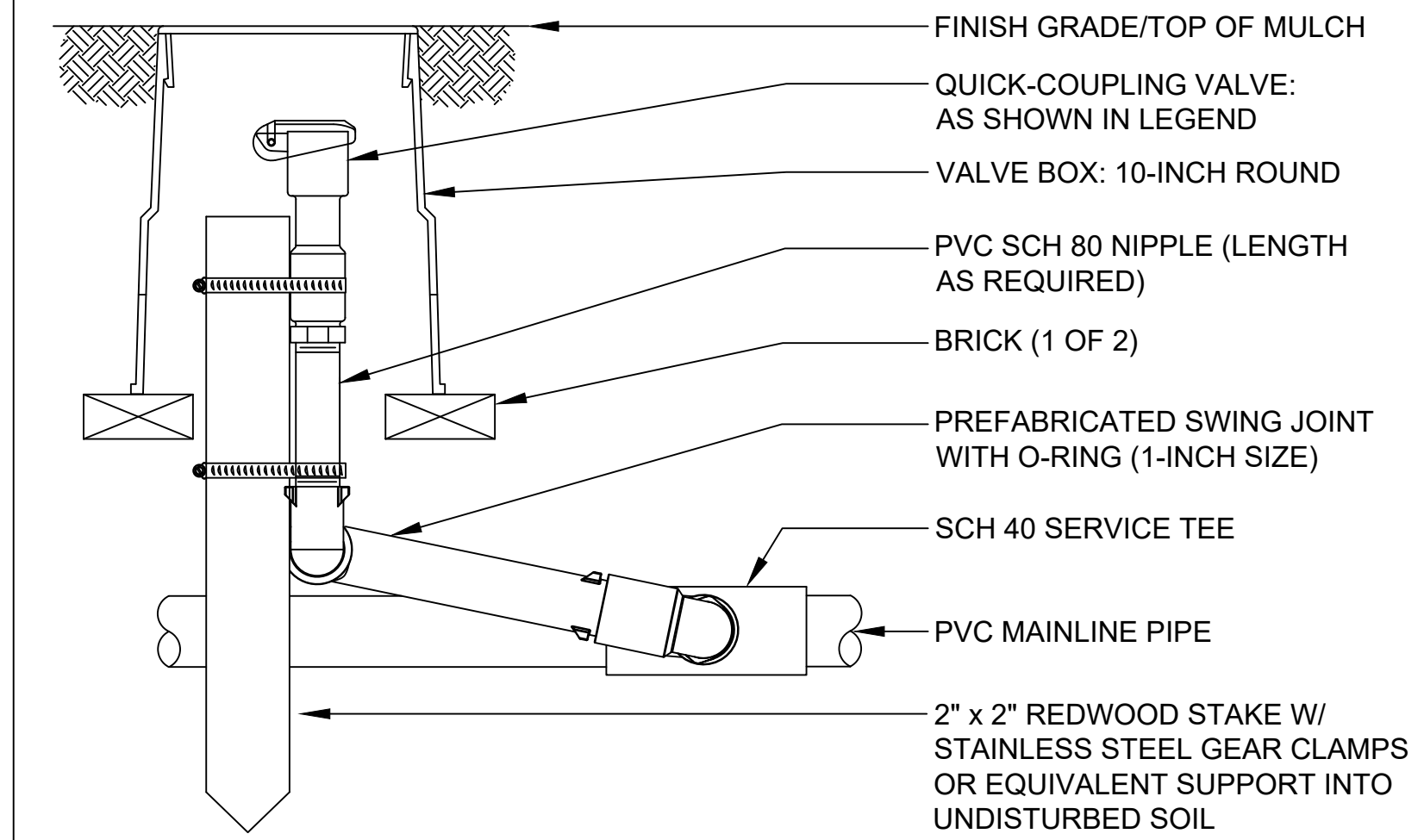
IRRIGATION  
DETAILS

15 OF 26

NOTE:  
1. FURNISH FITTINGS, PIPE AND BACKFLOW SIZED IDENTICALLY WITH NOMINAL IRRIGATION TAP SIZE.

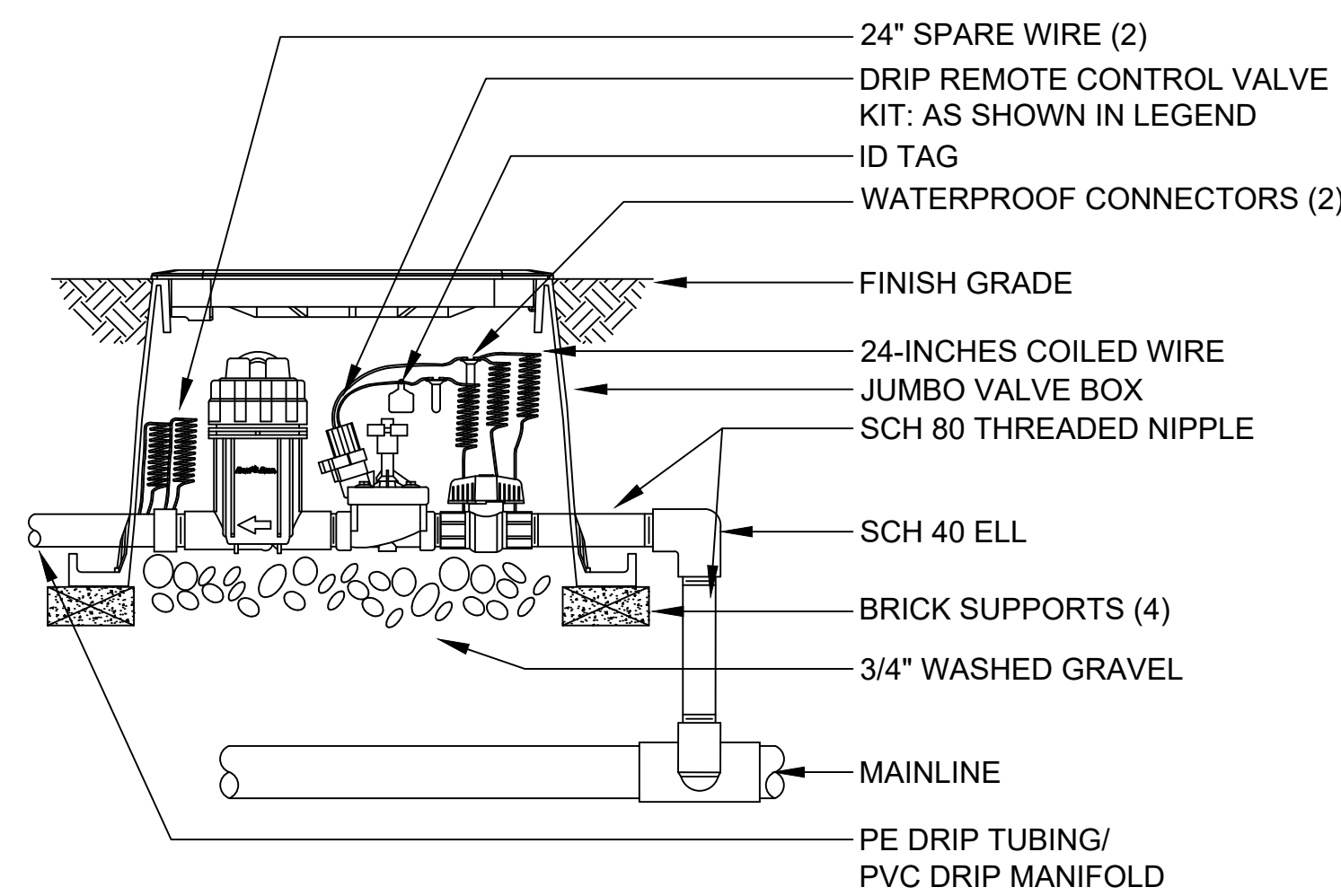


**1** BACKFLOW PREVENTION ASSEMBLY

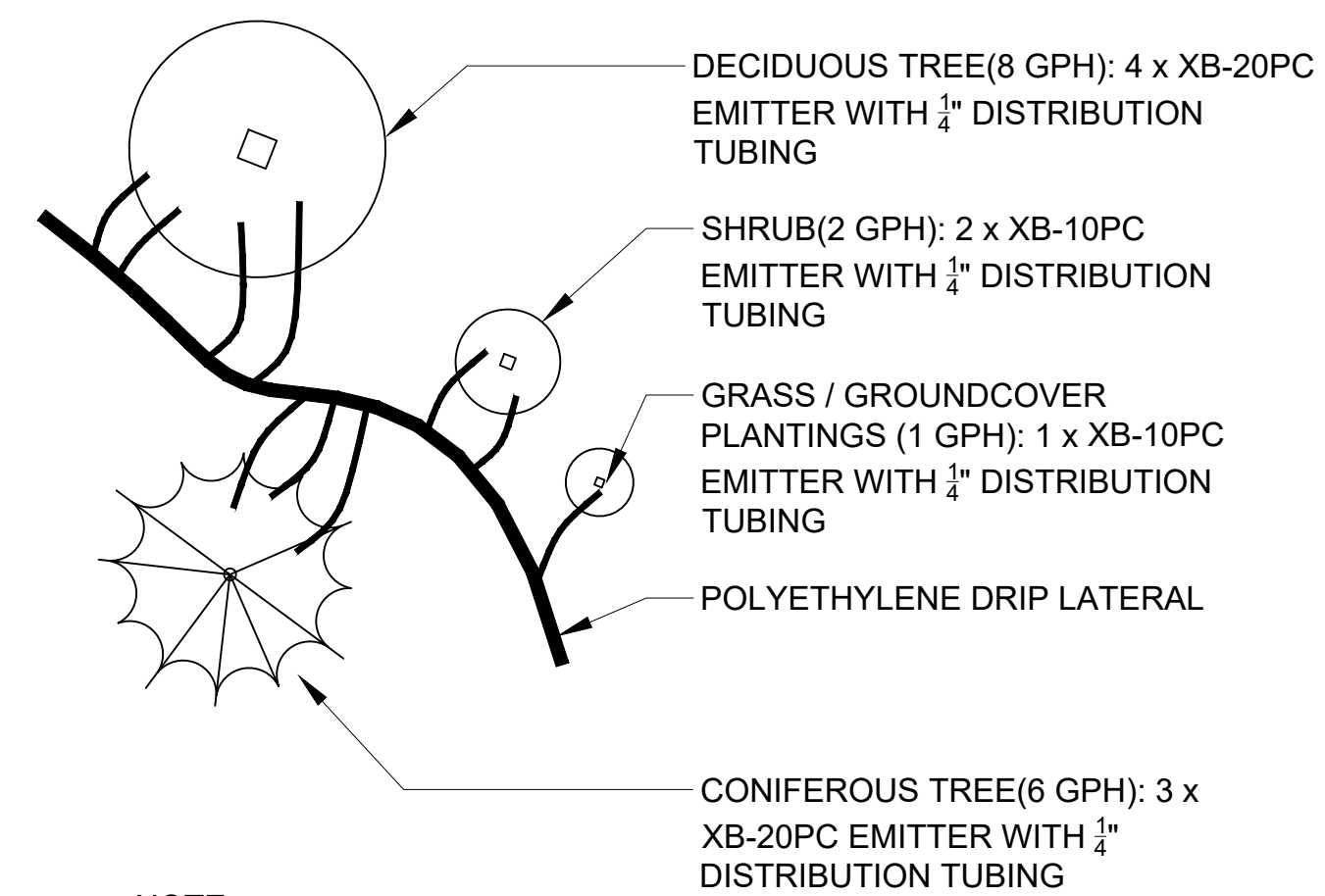


NOTE:  
1. FURNISH FITTINGS AND PIPING NOMINALLY SIZED IDENTICAL TO NOMINAL QUICK COUPLING VALVE INLET SIZE.

**2** QUICK COUPLING VALVE ASSEMBLY

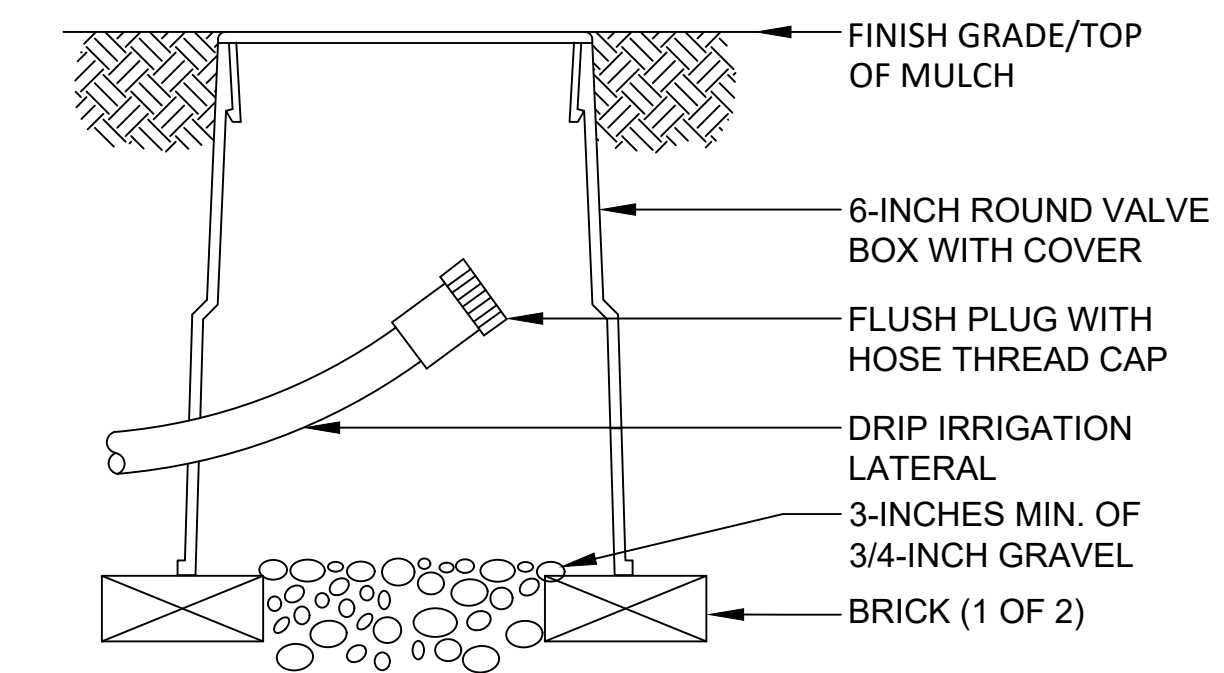


**3** DRIP REMOTE CONTROL VALVE ASSEMBLY

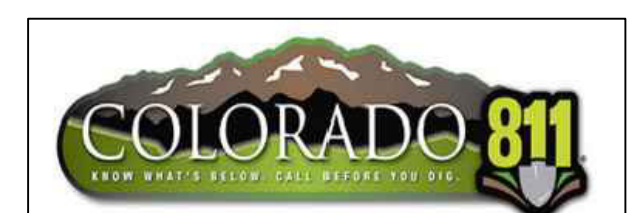


NOTE:  
1. MAXIMUM LENGTH OF 1/4\"/>

**4** TYPICAL EMITTER PLACEMENT & SCHEDULE



**5** DRIP FLUSH CAP ASSEMBLY



**LINCOLN PROFESSIONAL PARK FILING NO. 1 LOT 1  
MAVERIK INC. STORE SITE PLAN**

SITUATED IN THE NORTHWEST OF SECTION 15,  
TOWNSHIP 6 SOUTH, RANGE 66 WEST OF THE 6TH P.M.  
TOWN OF PARKER, COUNTY OF DOUGLAS, STATE OF COLORADO



**2** SOUTHEAST BUILDING PERSPECTIVE  
SCALE:



**1** NORTHWEST BUILDING PERSPECTIVE  
SCALE:

PROJECT NUMBER

21-122-0001

ISSUE DATE:

March 10, 2022

REVISIONS:

No. Date Description

NOTE:  
Bid documents should not be separated or issued as partial sets to subcontractors. Bidders are responsible for all portions of the documents that pertain to work covered by sub-bids. Bidder assumes full responsibility for error or misinterpretations resulting from partial sets of Bidding Documents by itself or any sub-bidder.

Conflicting information or errors found in the construction documents should be brought to the attention of the architect immediately. In the event of a conflict in the drawings, bidder should not assume the least expensive option will meet the project requirements.



185 S. State Street  
Salt Lake City, Utah 84111

**MAVERIK INC. STORE  
PARKER, COLORADO**

**EDCI**  
ENGINEERS  
1331 17TH STREET SUITE 605  
DENVER, COLORADO 80202  
PHONE: (720) 439-4700  
WEBSITE: www.edci-engineers.com  
CIVIL / STRUCTURAL

© Copyright 2022 EDCI Engineers, Inc. All Rights Reserved.  
This document and the ideas and designs herein are the sole and exclusive property of EDCI Engineers, Inc. No part of this document may be reproduced or transmitted in any form or by any means electronic or mechanical, including photocopying, recording, or by any information storage and retrieval system, without the prior written permission of EDCI Engineers, Inc.

**PERSPECTIVE  
VIEWS**

# LINCOLN PROFESSIONAL PARK FILING NO. 1 LOT 1 MAVERIK INC. STORE SITE PLAN

SITUATED IN THE NORTHWEST CORNER OF SECTION 15,  
TOWNSHIP 6 SOUTH, RANGE 66 WEST OF THE 6TH P.M.  
TOWN OF PARKER, COUNTY OF DOUGLAS, STATE OF COLORADO

### KEYED NOTES

- 04.05 NATURAL STONE
- 05.01 PRE-FINISHED GUTTER AND DOWNSPOUT, BRITISH RED, C-2
- 05.03 STEEL, PAINTED, SHERWIN WILLIAMS SW 7020 - BLACK FOX
- 05.06 MCCI PRE-FINISHED METAL ROOF, 1 3/4" STANDING SEAM, MIDNIGHT BRONZE, C-1
- 05.69 STEEL AWNING, COLOR SHERWIN WILLIAMS SW 7020 - BLACK FOX
- 06.04 FIBER CEMENT BOARD & BATTEN SIDING, PAINTED, SHERWIN WILLIAMS SW 7019 - GAUNTLET GRAY, BB-2
- 06.05 FIBER CEMENT BOARD & BATTEN SIDING, PAINTED, SHERWIN WILLIAMS SW 7043 - WORLDLY GRAY, BB-1
- 06.06 FIBER CEMENT TRIM, PAINTED, SHERWIN WILLIAMS SW 7043 - WORLDLY GRAY
- 06.30 HORIZONTAL JOINT IN SIDING
- 08.02 ALUMINUM STOREFRONT SYSTEM, DARK BRONZE
- 08.04 HOLLOW METAL DOOR AND FRAME, PAINTED AGED PEWTER
- 08.26 STOREFRONT SYSTEM WITH CLEAR GLAZING
- 26.10 MAIN DISTRIBUTION PANEL, PAINTED TO MATCH BUILDING

PROJECT NUMBER

21-122-0001

ISSUE DATE:

March 10, 2022

REVISIONS:

No. Date Description

NOTE: Bid documents should not be separated or issued as partial sets to subcontractors. Bidders are responsible for all portions of the documents that pertain to work covered by sub-bids. Bidder assumes full responsibility for error or misinterpretations resulting from partial sets of Bidding Documents by itself or any sub-bidder.

Conflicting information or errors found in the construction documents should be brought to the attention of the architect immediately. In the event of a conflict in the drawings, bidder should not assume the least expensive option will meet the project requirements.



185 S. State Street  
Salt Lake City, Utah 84111

MAVERIK INC. STORE  
PARKER, COLORADO

**DCI**  
ENGINEERS  
1331 17TH STREET SUITE 605  
DENVER, COLORADO 80202  
PHONE: (720) 439-4700  
WEBSITE: www.dci-engineers.com  
CIVIL / STRUCTURAL

EXTERIOR ELEVATIONS



**2 NORTH ELEVATION**  
SCALE: 1/4" = 1'-0"



**1 EAST ELEVATION**  
SCALE: 1/4" = 1'-0"

D:\Lincoln\122\122-0001\122-0001\_Parker\_Regional\Drawings



# LINCOLN PROFESSIONAL PARK FILING NO. 1 LOT 1 MAVERIK INC. STORE SITE PLAN

SITUATED IN THE NORTHWEST OF SECTION 15,  
TOWNSHIP 6 SOUTH, RANGE 66 WEST OF THE 6TH P.M.  
TOWN OF PARKER, COUNTY OF DOUGLAS, STATE OF COLORADO

### KEYED NOTES

- 04.05 NATURAL STONE
- 05.05 MBCI PRE-FINISHED ROOF, COLOR C-1, 1-3/4" STANDING SEAM
- 05.12 ALUMINUM COMPOSITE METAL PANEL, WORLDLY GRAY
- 05.68 ALUMINUM COMPOSITE METAL PANEL, WHITE
- 10.49 4A-40 BC FIRE EXTINGUISHER W/ CASE, LOCATE WITHIN 75' OF ALL PUMPS, DISPENSERS, OR STORAGE TANK. LOCATION TO BE FINALIZED BY FIRE MARSHAL
- 11.06 DISPENSING STATION (BY OTHERS)
- 26.07 ALL LIGHT FIXTURES (NOT SHOWN) TO BE FLUSH MOUNTED WITHIN THE DECK PANEL SOFFIT (SOFFIT COLOR P-7). SEE ELECTRICAL AND FUEL DISPENSING DRAWINGS
- 32.03 4" DIAMETER "U" BOLLARD, SET AND FILLED W/ CONCRETE, SEE CIVIL DRAWINGS, PAINTED P-4

PROJECT NUMBER

21-122-0001

ISSUE DATE:

March 10, 2022

REVISIONS:

No.	Date	Description

NOTE:  
Bid documents should not be separated or issued as partial sets to subcontractors. bidders are responsible for all portions of the documents that pertain to work covered by sub-bids. Bidder assumes full responsibility for error or misinterpretations resulting from partial sets of Bidding Documents by itself or any sub-bidder.

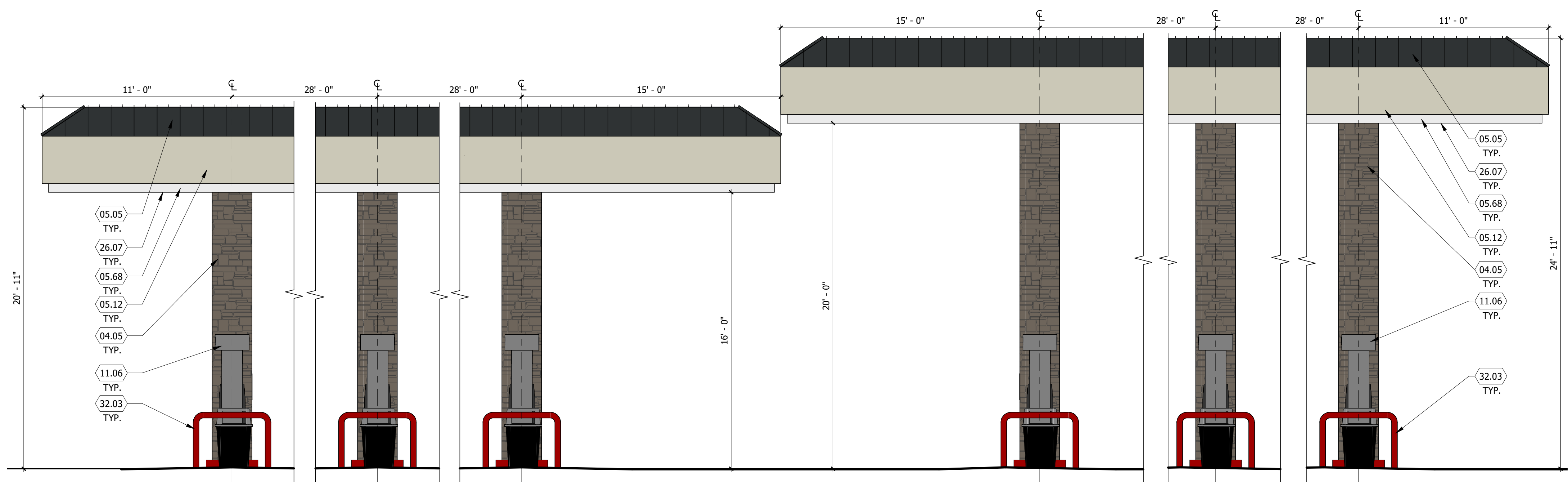
Conflicting information or errors found in the construction documents should be brought to the attention of the architect immediately. In the event of a conflict in the drawings, bidder should not assume the least expensive option will meet the project requirements.



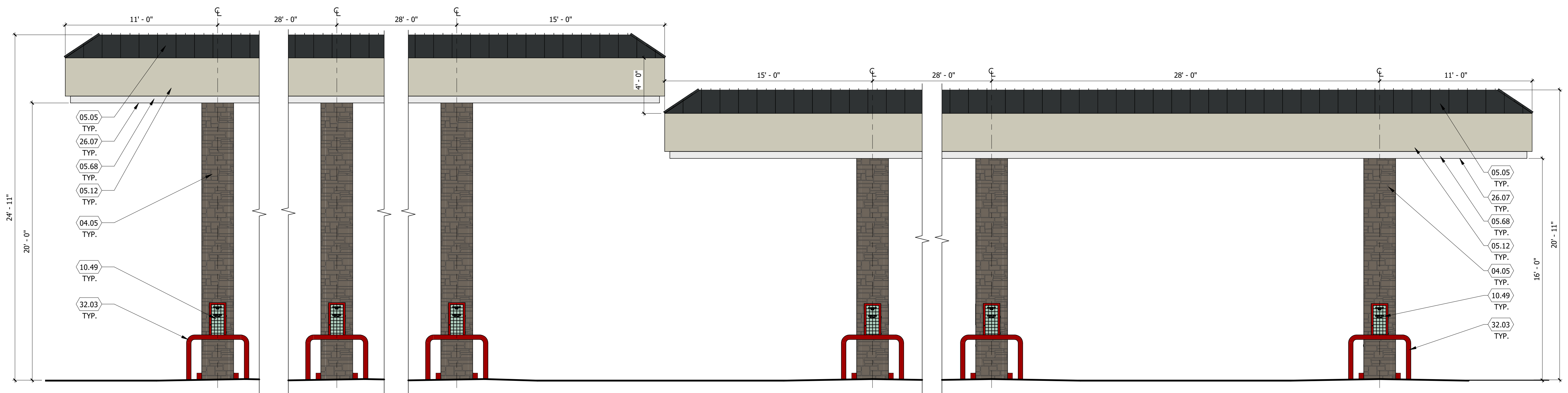
MAVERIK INC. STORE  
PARKER, COLORADO



CANOPY ELEVATIONS



**2** FUEL DISPENSING CANOPY - BUILDING SIDE ELEVATION  
SCALE: 1/4" = 1'-0"



**1** FUEL DISPENSING CANOPY - STREET SIDE ELEVATION  
SCALE: 1/4" = 1'-0"

**NOTE:**  
FUEL CANOPY DRAWINGS PROVIDED ARE CONCEPTUAL, AND MAY VARY FROM SITE TO SITE.

# LINCOLN PROFESSIONAL PARK FILING NO. 1 LOT 1 MAVERIK INC. STORE SITE PLAN

SITUATED IN THE NORTHWEST CORNER OF SECTION 15,  
TOWNSHIP 6 SOUTH, RANGE 66 WEST OF THE 6TH P.M.  
TOWN OF PARKER, COUNTY OF DOUGLAS, STATE OF COLORADO

PROJECT NUMBER

21-122-0001

ISSUE DATE:

March 10, 2022

REVISIONS:

No.	Date	Description

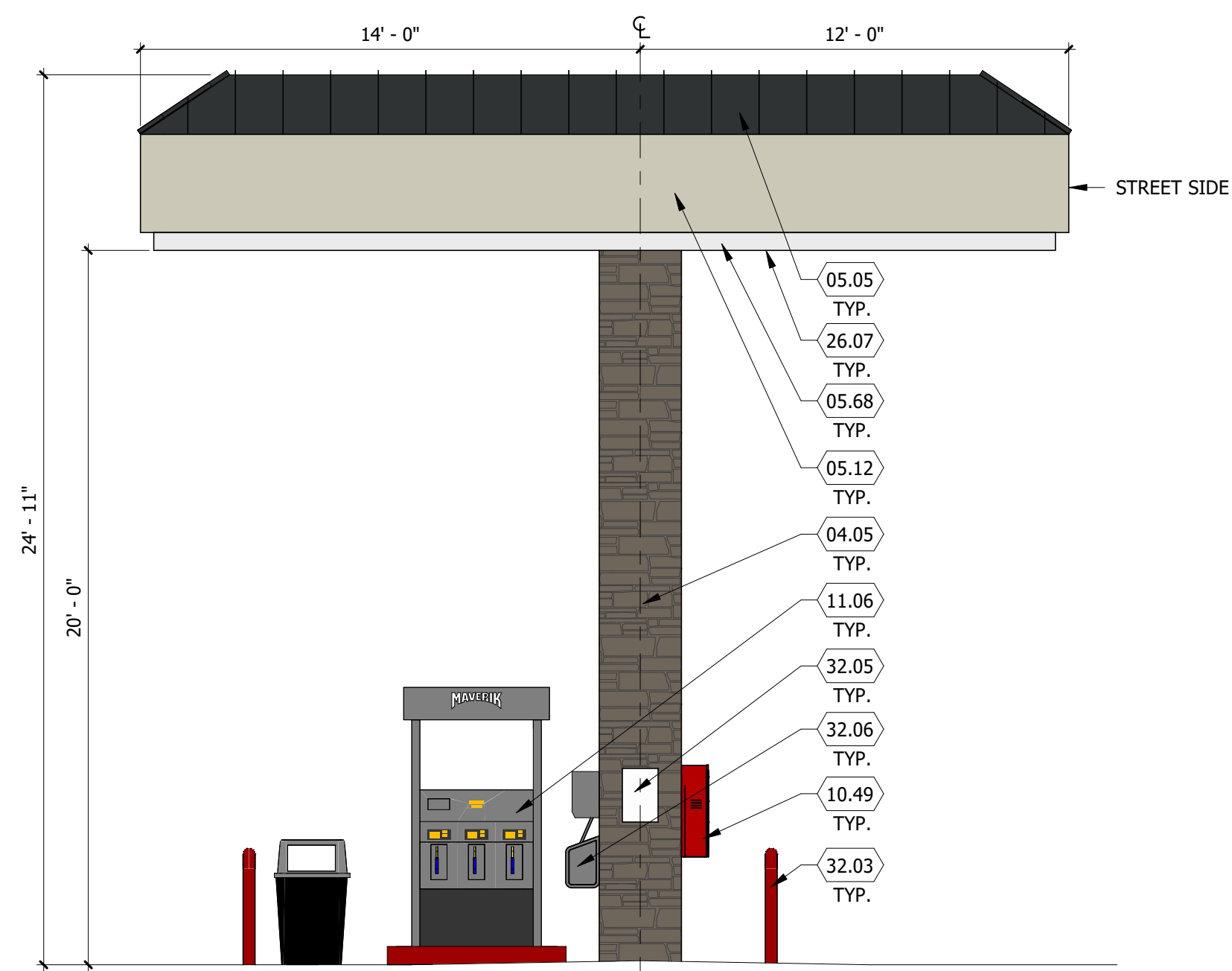
NOTE:  
Bid documents should not be separated or issued as partial sets to subcontractors. bidders are responsible for all portions of the documents that pertain to work covered by sub-bids. Bidder assumes full responsibility for error or misinterpretations resulting from partial sets of Bidding Documents by itself or any sub-bidder.

Conflicting information or errors found in the construction documents should be brought to the attention of the architect immediately. in the event of a conflict in the drawings, bidder should not assume the least expensive option will meet the project requirements.

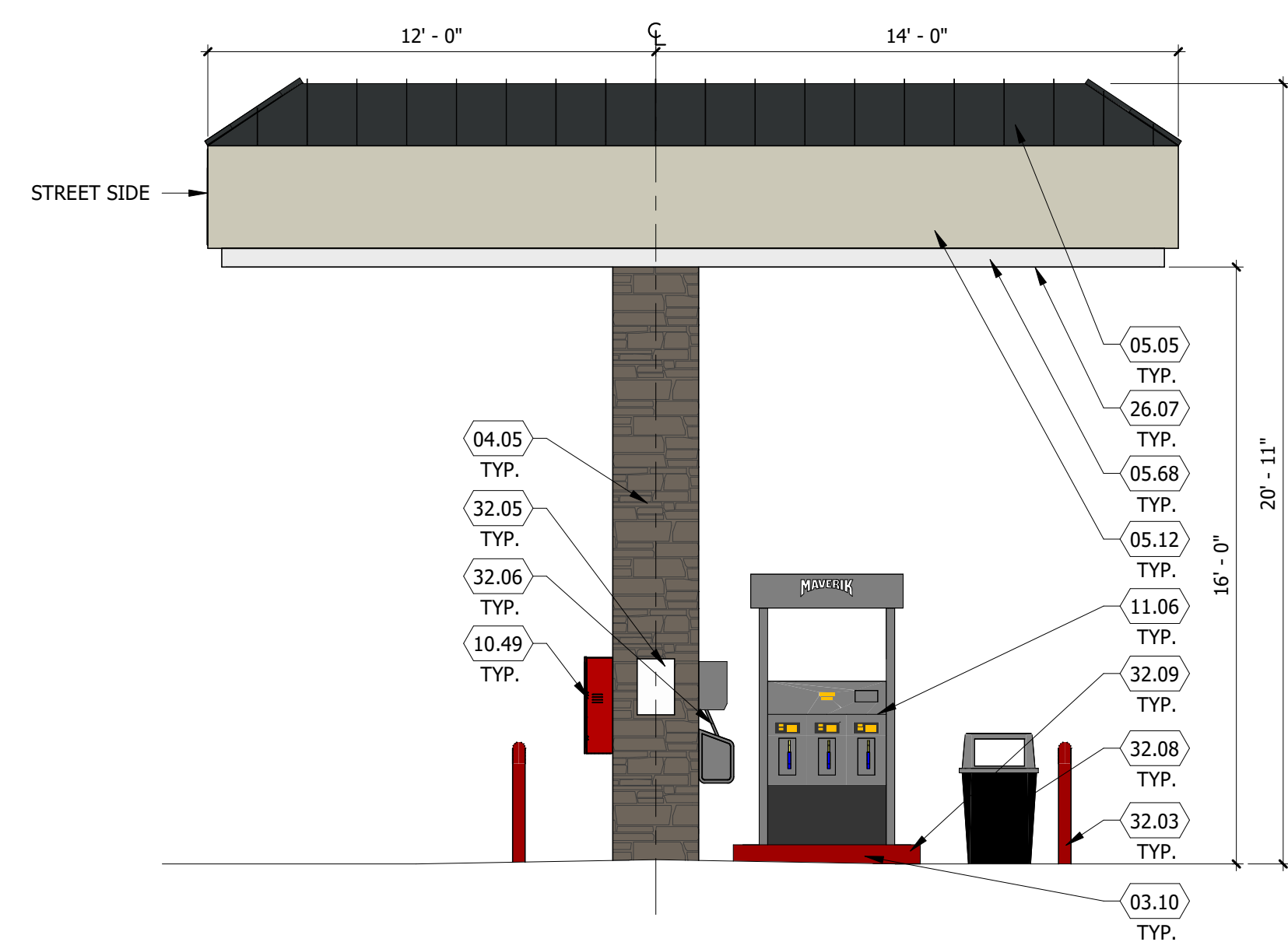


185 S. State Street  
Salt Lake City, Utah 84111

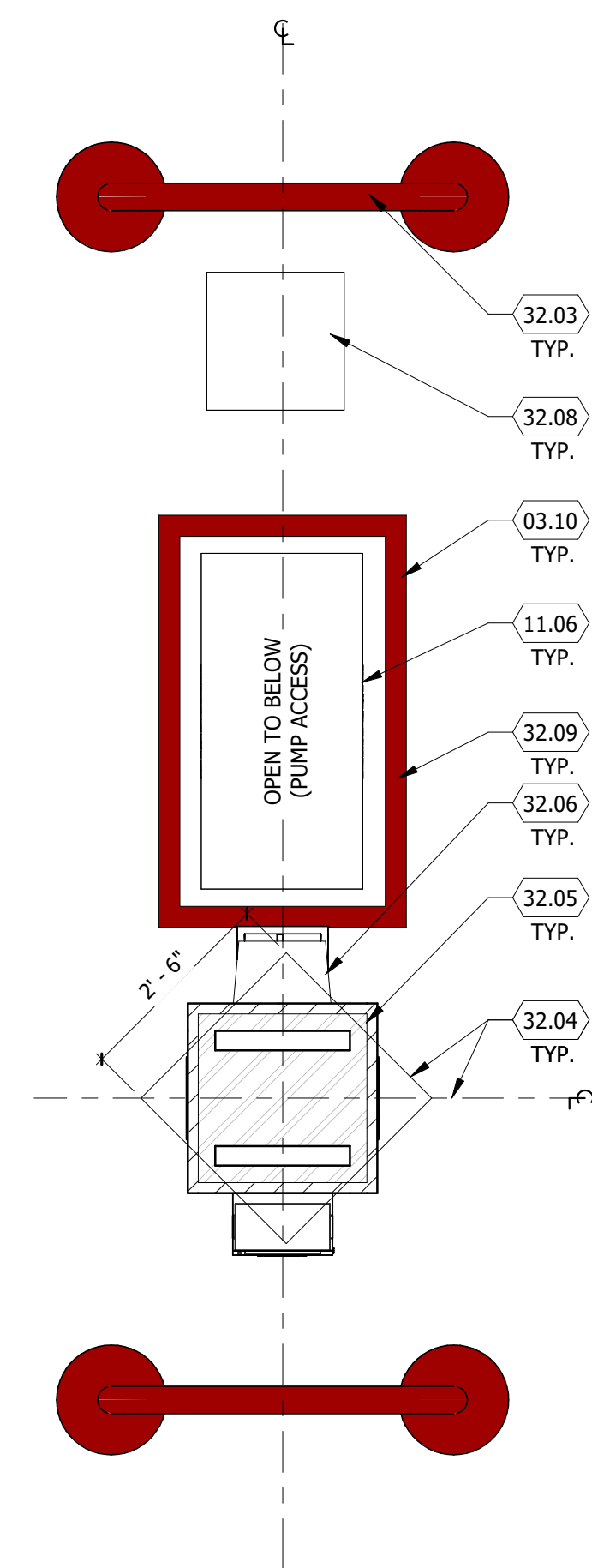
MAVERIK INC. STORE  
PARKER, COLORADO



**3** FUEL DISPENSING CANOPY - END ELEVATION  
SCALE: 1/4" = 1'-0"



**2** FUEL DISPENSING CANOPY - END ELEVATION  
SCALE: 1/4" = 1'-0"



**1** CANOPY COLUMN PLAN  
SCALE: 1/2" = 1'-0"

**DCI**  
ENGINEERS  
1331 17TH STREET, SUITE 605  
DENVER, COLORADO 80202  
PHONE: (720) 439-4700  
WEBSITE: www.dci-engineers.com  
CIVIL / STRUCTURAL

CANOPY  
ELEVATIONS

# LINCOLN PROFESSIONAL PARK FILING NO. 1 LOT 1 MAVERIK INC. STORE SITE PLAN

SITUATED IN THE NORTHWEST OF SECTION 15,  
TOWNSHIP 6 SOUTH, RANGE 66 WEST OF THE 6TH P.M.  
TOWN OF PARKER, COUNTY OF DOUGLAS, STATE OF COLORADO

## KEYED NOTES

- 03.08 CONCRETE FOOTINGS AND FOUNDATIONS, SEE STRUCTURAL DRAWINGS
- 03.13 CONCRETE PIER FOUNDATION, SEE STRUCTURAL DRAWINGS
- 04.05 NATURAL STONE
- 04.06 NATURAL STONE CAP
- 04.10 SPLIT FACE CAP
- 06.05 FIBER CEMENT BOARD & BATTEN SIDING, PAINTED, SHERWIN WILLIAMS SW 7043 - WORLDLY GRAY, BB-1
- 10.38 WELD BRACES TO GATE AS REQUIRED
- 10.39 POST, PAINTED P-9
- 10.40 CHAIN LINK GATE WITH SLATS TO MATCH P-9, W/ (4) HINGES, PAINTED P-9
- 10.41 LATCH W/ ROD TO CONCRETE, PAINTED P-9, W/ (4) HINGES, PAINTED P-9
- 10.42 STEEL SLEEVE

PROJECT NUMBER

21-122-0001

ISSUE DATE:

March 10, 2022

REVISIONS:

No.	Date	Description

NOTE:  
Bid documents should not be separated or issued as partial sets to subcontractors. bidders are responsible for all portions of the documents that pertain to work covered by sub-bids. Bidder assumes full responsibility for error or misinterpretations resulting from partial sets of Bidding Documents by itself or any sub-bidder.

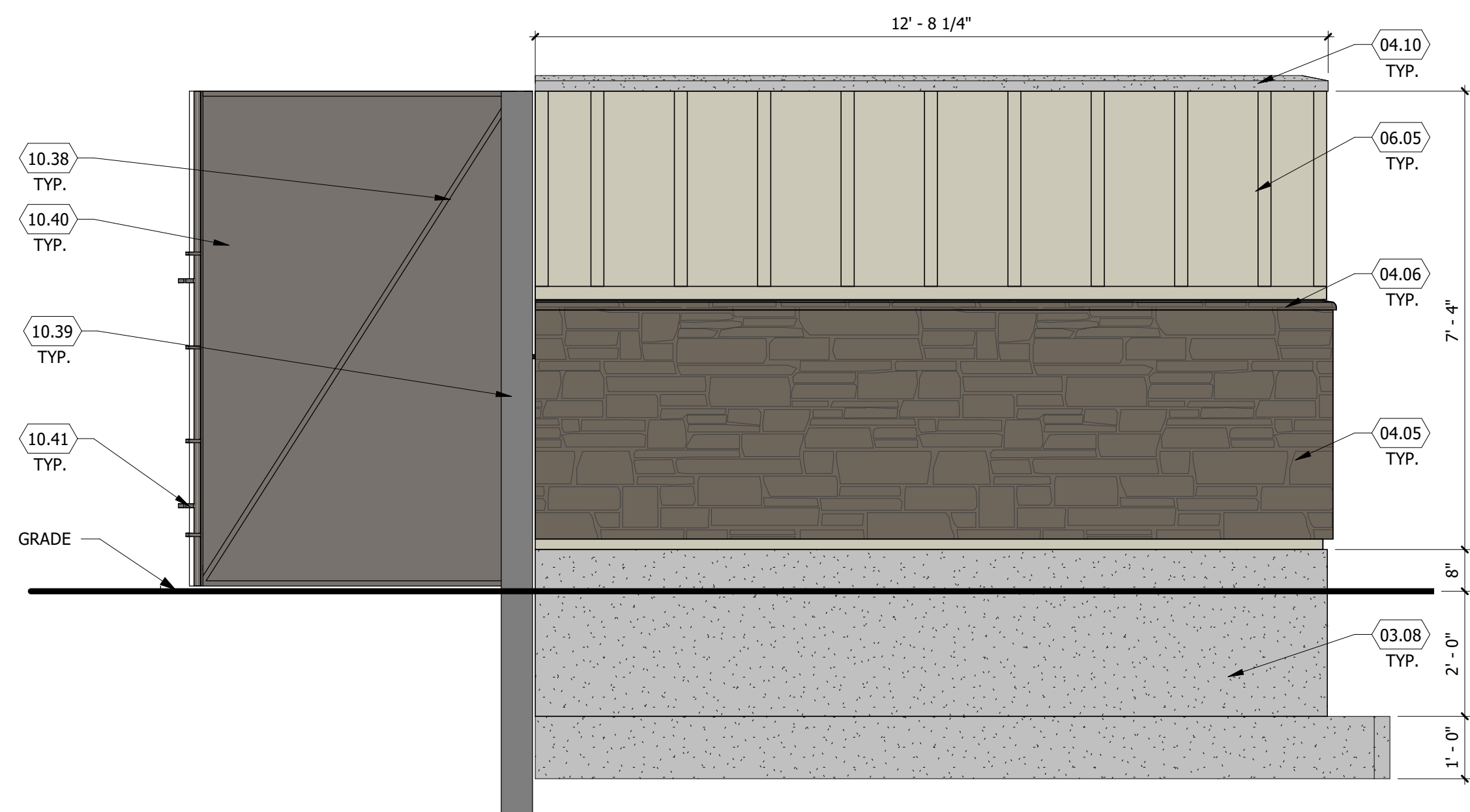
Conflicting information or errors found in the construction documents should be brought to the attention of the architect immediately. In the event of a conflict in the drawings, bidder should not assume the least expensive option will meet the project requirements.



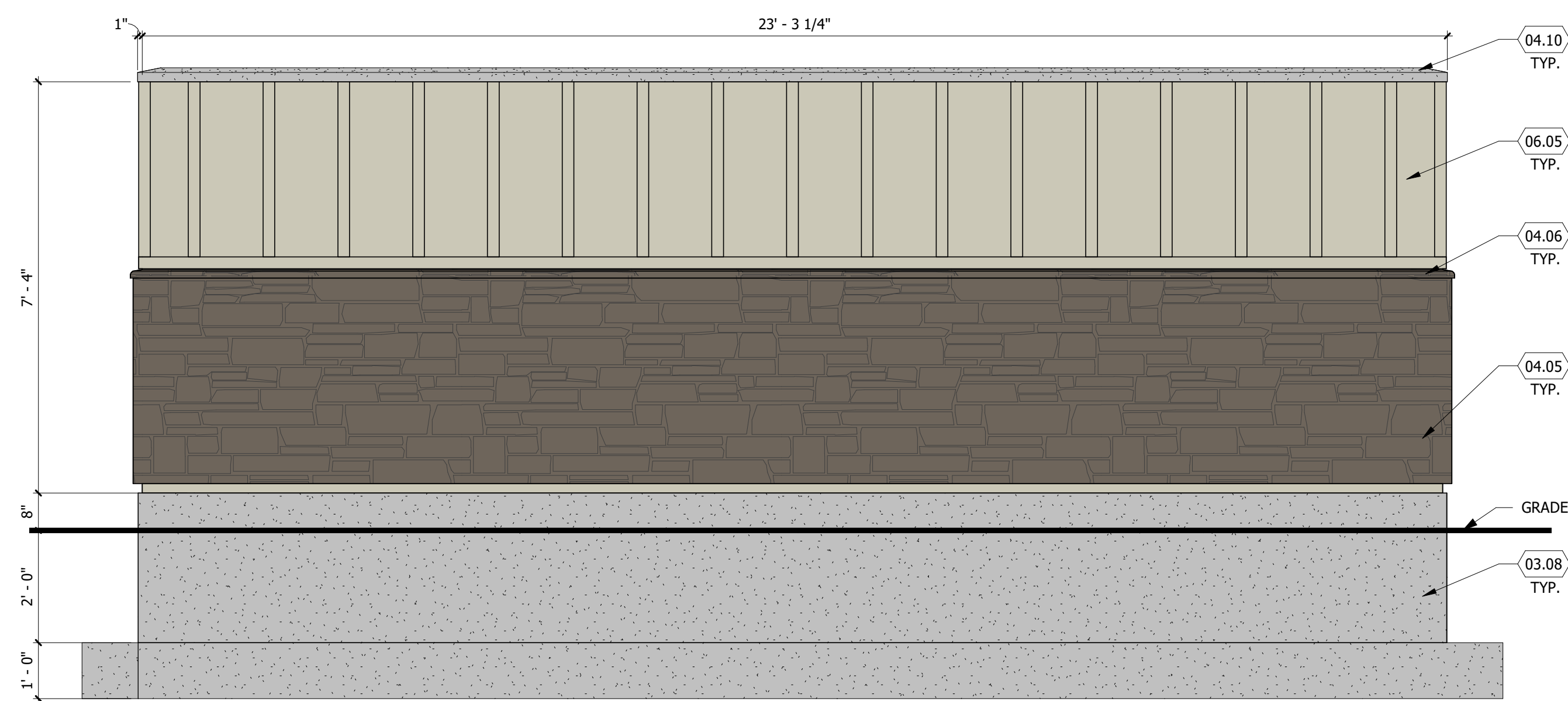
MAVERIK INC. STORE  
PARKER, COLORADO



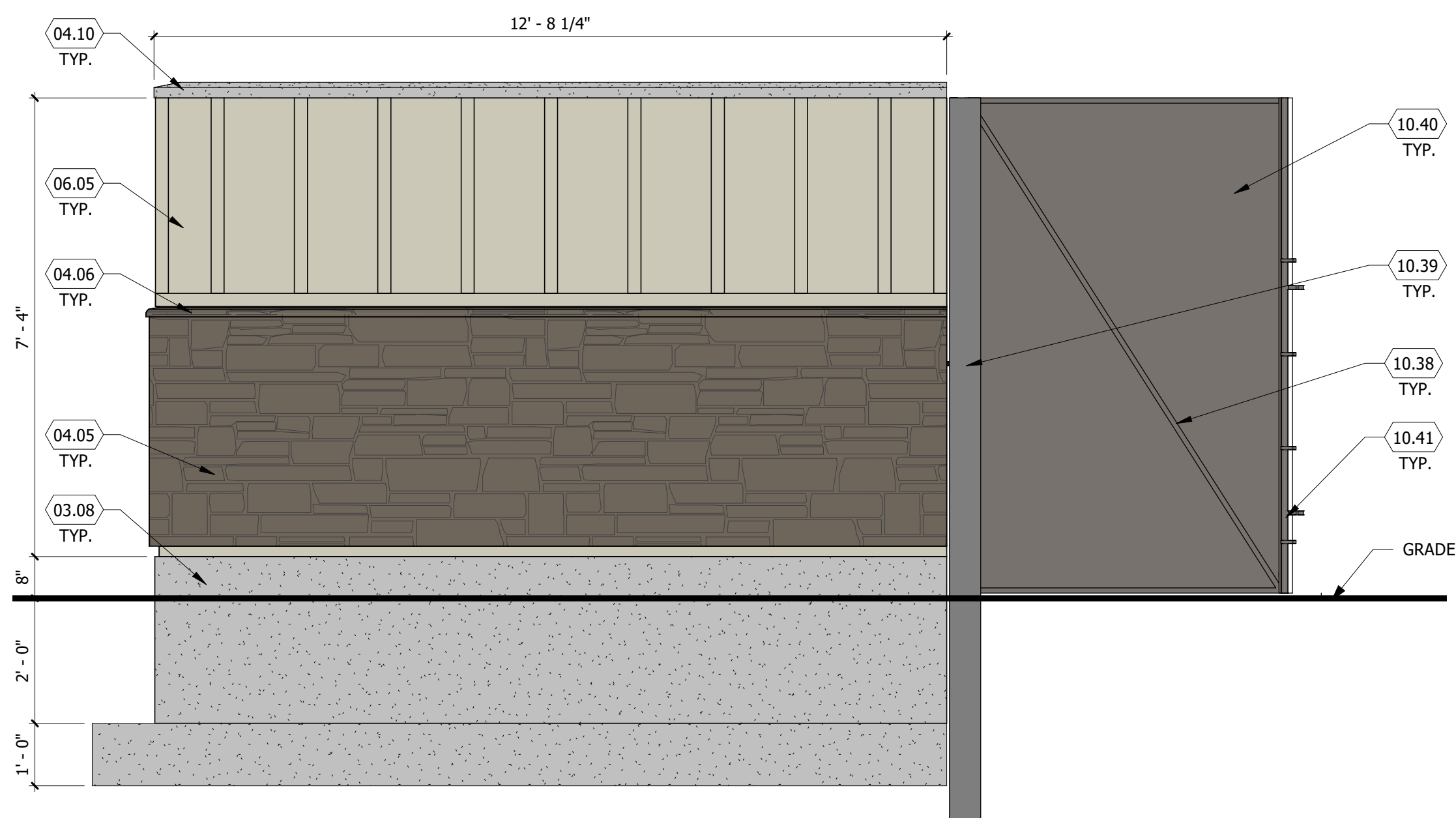
TRASH ENCLOSURE ELEVATIONS



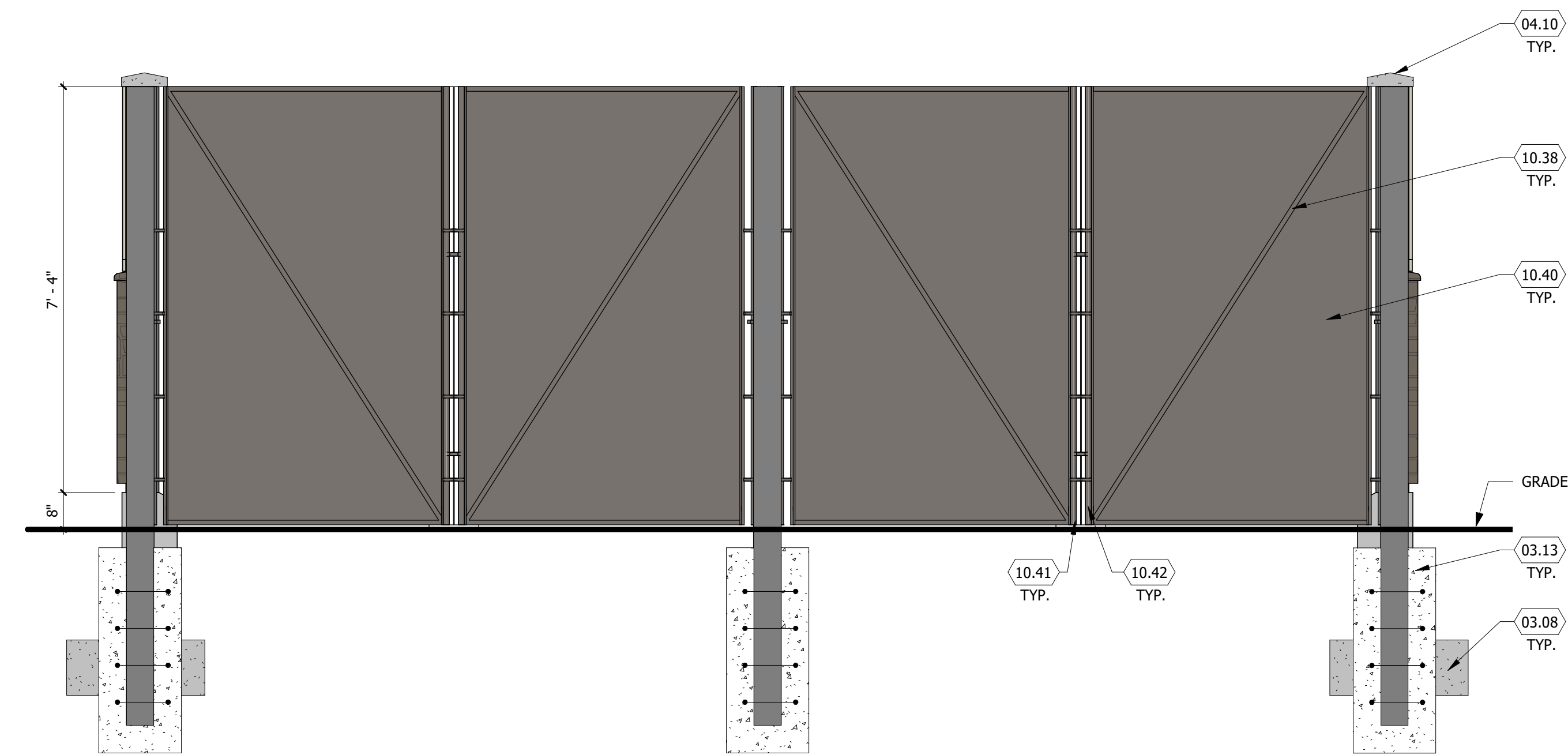
4 TRASH ENCLOSURE - LEFT ELEVATION  
SCALE: 1/2" = 1'-0"



3 TRASH ENCLOSURE - BACK ELEVATION  
SCALE: 1/2" = 1'-0"



2 TRASH ENCLOSURE - RIGHT ELEVATION  
SCALE: 1/2" = 1'-0"



1 TRASH ENCLOSURE - FRONT ELEVATION  
SCALE: 1/2" = 1'-0"

D:\Lincoln\Professional Park\0301\_01\_R10\_001\_Park\_Plan\_SitePlan.dwg

# LINCOLN PROFESSIONAL PARK FILING NO. 1 LOT 1 MAVERIK INC. STORE SITE PLAN

SITUATED IN THE NORTHWEST OF SECTION 15,  
TOWNSHIP 6 SOUTH, RANGE 66 WEST OF THE 6TH P.M.  
TOWN OF PARKER, COUNTY OF DOUGLAS, STATE OF COLORADO

PROJECT NUMBER

21-122-0001

ISSUE DATE:

March 10, 2022

REVISIONS:

No.	Date	Description

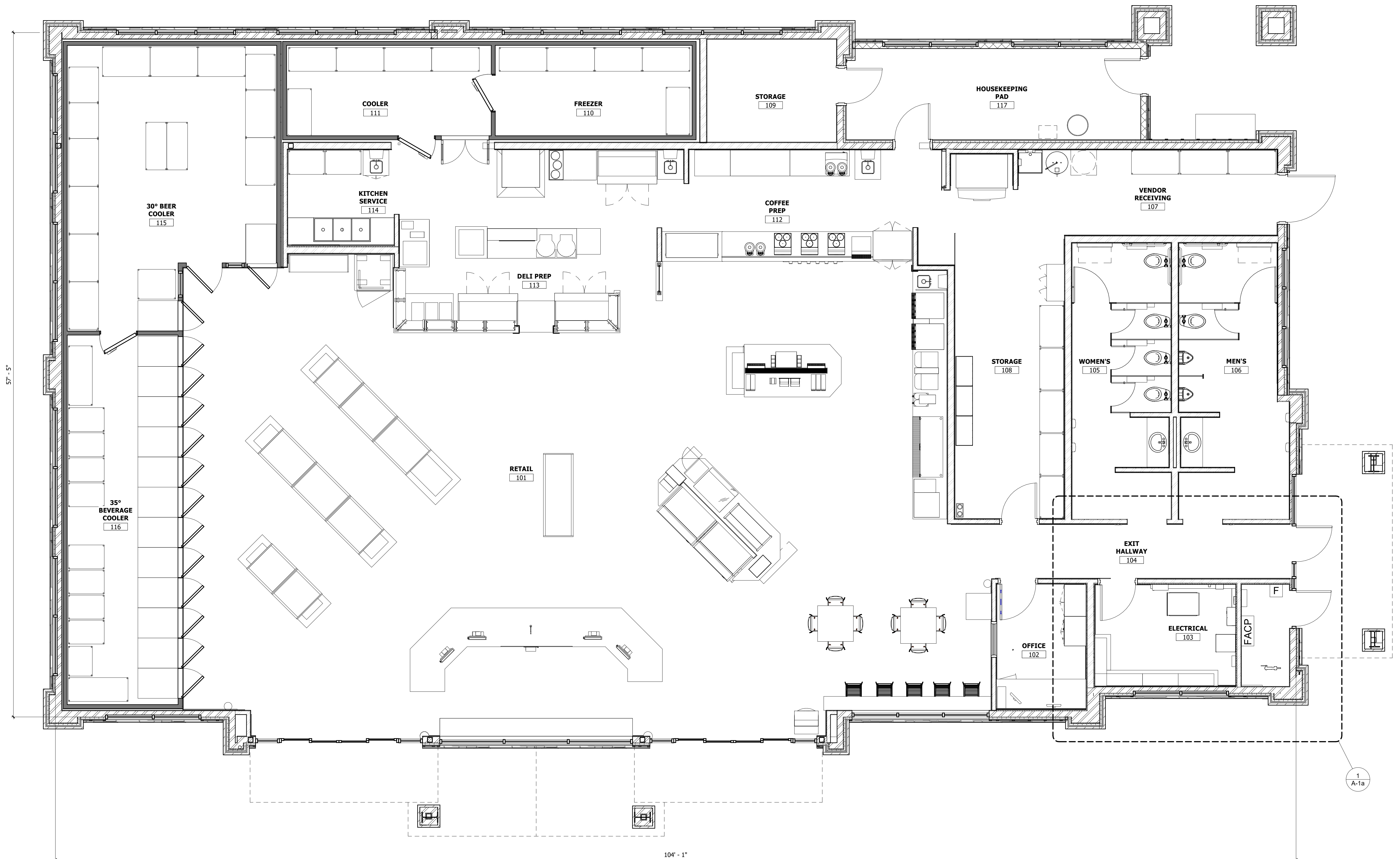
NOTE:  
Bid documents should not be separated or issued as partial sets to subcontractors. Bidders are responsible for all portions of the documents that pertain to work covered by sub-bids. Bidder assumes full responsibility for error or misinterpretations resulting from partial sets of Bidding Documents by itself or any sub-bidder.

Conflicting information or errors found in the construction documents should be brought to the attention of the architect immediately. In the event of a conflict in the drawings, bidder should not assume the least expensive option will meet the project requirements.



185 S. State Street  
Salt Lake City, Utah 84111

**MAVERIK INC. STORE**  
PARKER, COLORADO



**1 FLOOR PLAN**  
SCALE: 1/4" = 1'-0"

**DCI ENGINEERS**  
1331 17TH STREET SUITE 605  
DENVER, COLORADO 80202  
PHONE: (720) 439-4700  
WEBSITE: www.dci-engineers.com  
CIVIL / STRUCTURAL

**FLOOR PLAN**

# LINCOLN PROFESSIONAL PARK FILING NO. 1 LOT 1 MAVERIK INC. STORE SITE PLAN

SITUATED IN THE NORTHWEST OF SECTION 15,  
TOWNSHIP 6 SOUTH, RANGE 66 WEST OF THE 6TH P.M.  
TOWN OF PARKER, COUNTY OF DOUGLAS, STATE OF COLORADO

PROJECT NUMBER

21-122-0001

ISSUE DATE:

March 10, 2022

REVISIONS:

No.	Date	Description

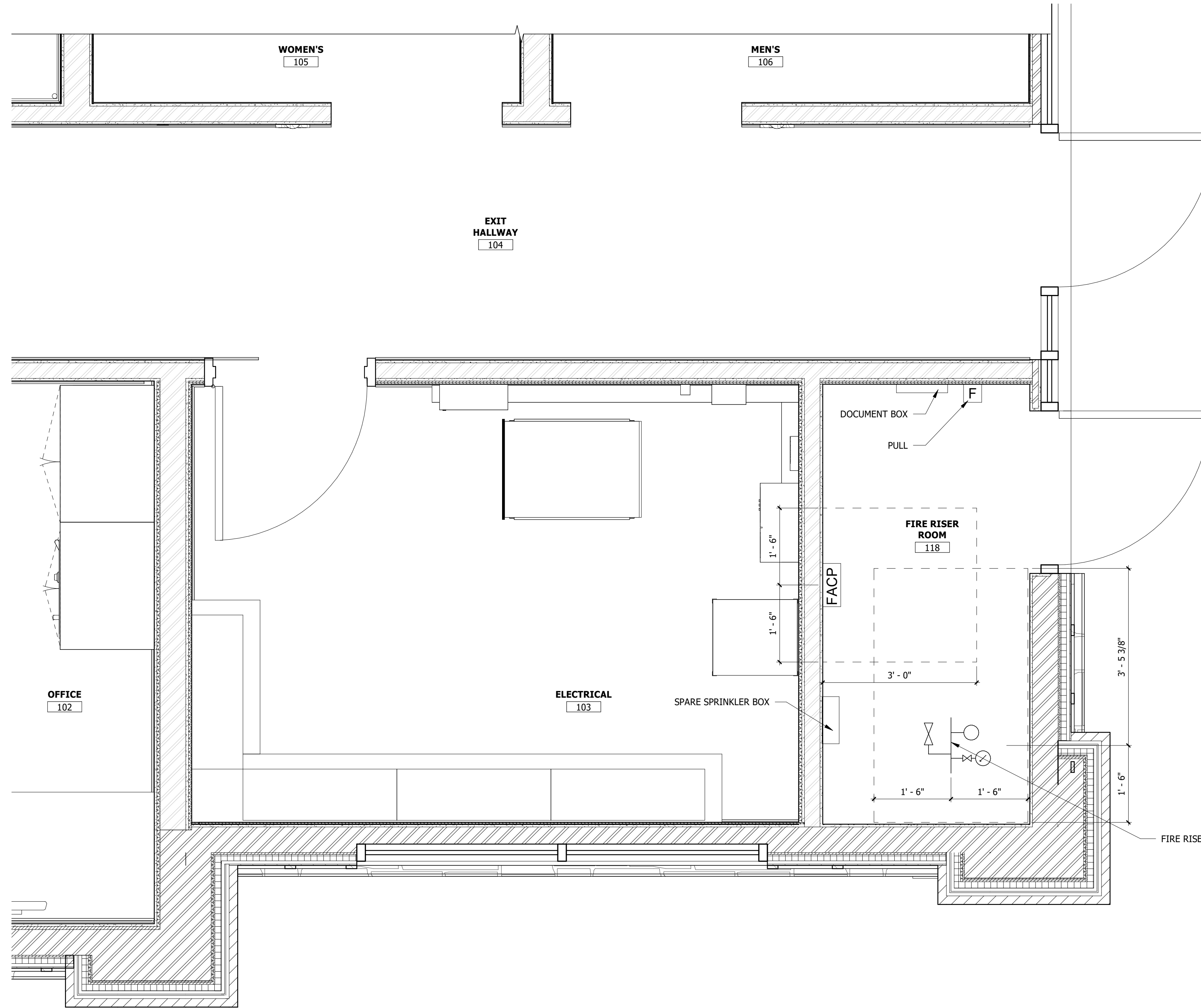
NOTE:  
Bid documents should not be separated or issued as partial sets to subcontractors. bidders are responsible for all portions of the documents that pertain to work covered by sub-bids. Bidder assumes full responsibility for error or misinterpretations resulting from partial sets of Bidding Documents by itself or any sub-bidder.

Conflicting information or errors found in the construction documents should be brought to the attention of the architect immediately. In the event of a conflict in the drawings, bidder should not assume the least expensive option will meet the project requirements.



185 S. State Street  
Salt Lake City, Utah 84111

**MAVERIK INC. STORE**  
PARKER, COLORADO



**1** ENLARGED FIRE RISER ROOM  
SCALE: 3/4" = 1'-0"

**DCI**  
ENGINEERS  
1331 17TH STREET, SUITE 605  
DENVER, COLORADO 80202  
PHONE: (720) 439-4700  
WEBSITE: www.dci-engineers.com  
CIVIL / STRUCTURAL

Copyright © 2022 by DCI Engineers, Inc. All Rights Reserved.  
This document and its contents are the property of DCI Engineers, Inc.  
Unauthorized reproduction or distribution is prohibited.  
DCI Engineers, Inc. assumes no responsibility for its construction work.

**ENLARGED  
FIRE RISER  
ROOM**

D:\Lincoln Park\15000\_18000\_19000\_20000\_Parker\_Regional\Drawings.rvt



**LINCOLN PROFESSIONAL PARK FILING NO. 1 LOT 1  
MAVERIK INC. STORE SITE PLAN**

SITUATED IN THE NORTHWEST OF SECTION 15,  
TOWNSHIP 6 SOUTH, RANGE 66 WEST OF THE 6TH P.M.  
TOWN OF PARKER, COUNTY OF DOUGLAS, STATE OF COLORADO

PROJECT NUMBER

21-122-0001

ISSUE DATE:

March 10, 2022

REVISIONS:

No.	Date	Description

NOTE:  
Bid documents should not be separated or issued as partial sets to subcontractors. Bidders are responsible for all portions of the documents that pertain to work covered by sub-bids. Bidder assumes full responsibility for error or misinterpretations resulting from partial sets of Bidding Documents by itself or any sub-bidder.

Conflicting information or errors found in the construction documents should be brought to the attention of the architect immediately. In the event of a conflict in the drawings, bidder should not assume the least expensive option will meet the project requirements.



185 S. State Street  
Salt Lake City, Utah 84111

**MAVERIK INC. STORE**  
PARKER, COLORADO



BB-1 Fiberboard -  
Worldly Gray

BB-2 Fiberboard -  
Gauntlet Gray



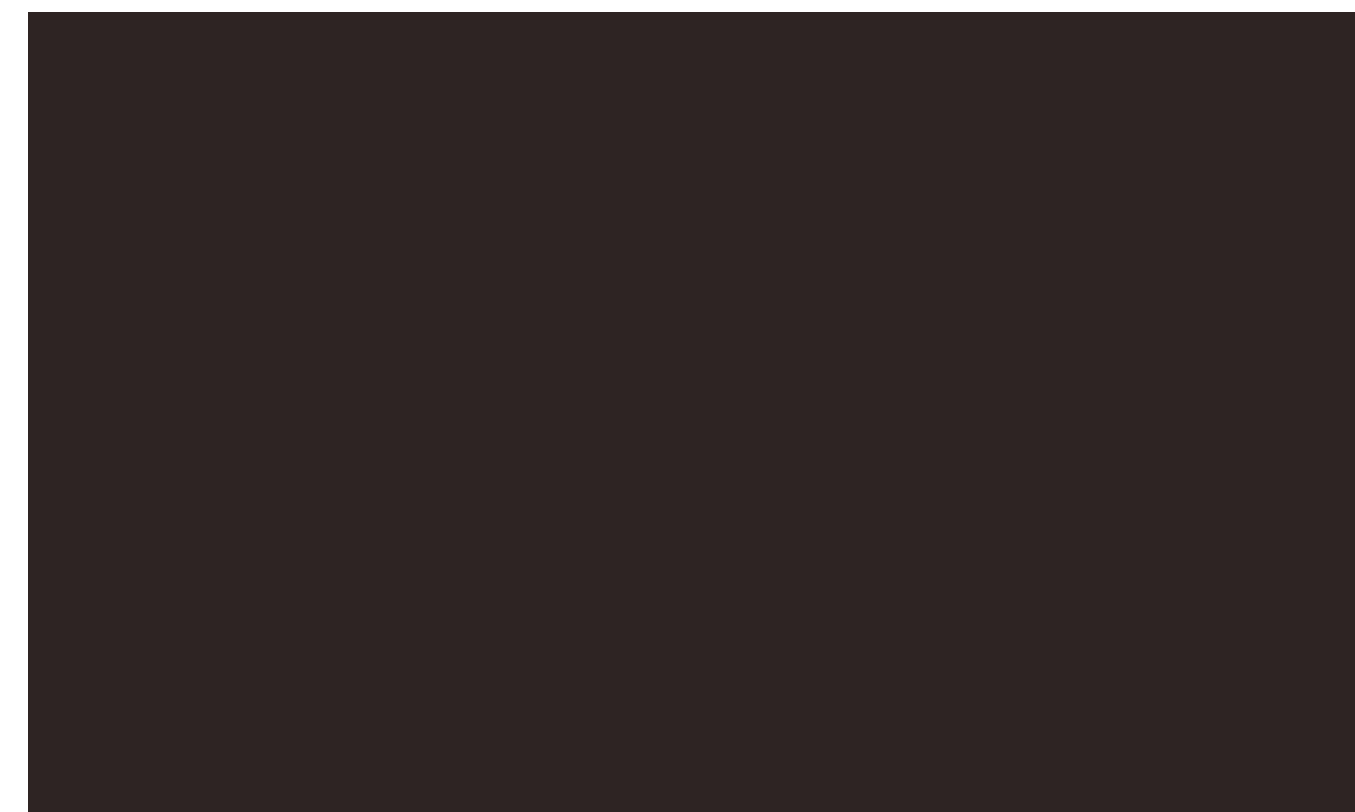
Natural Stone - to match, Skyline, Country LedgeStone



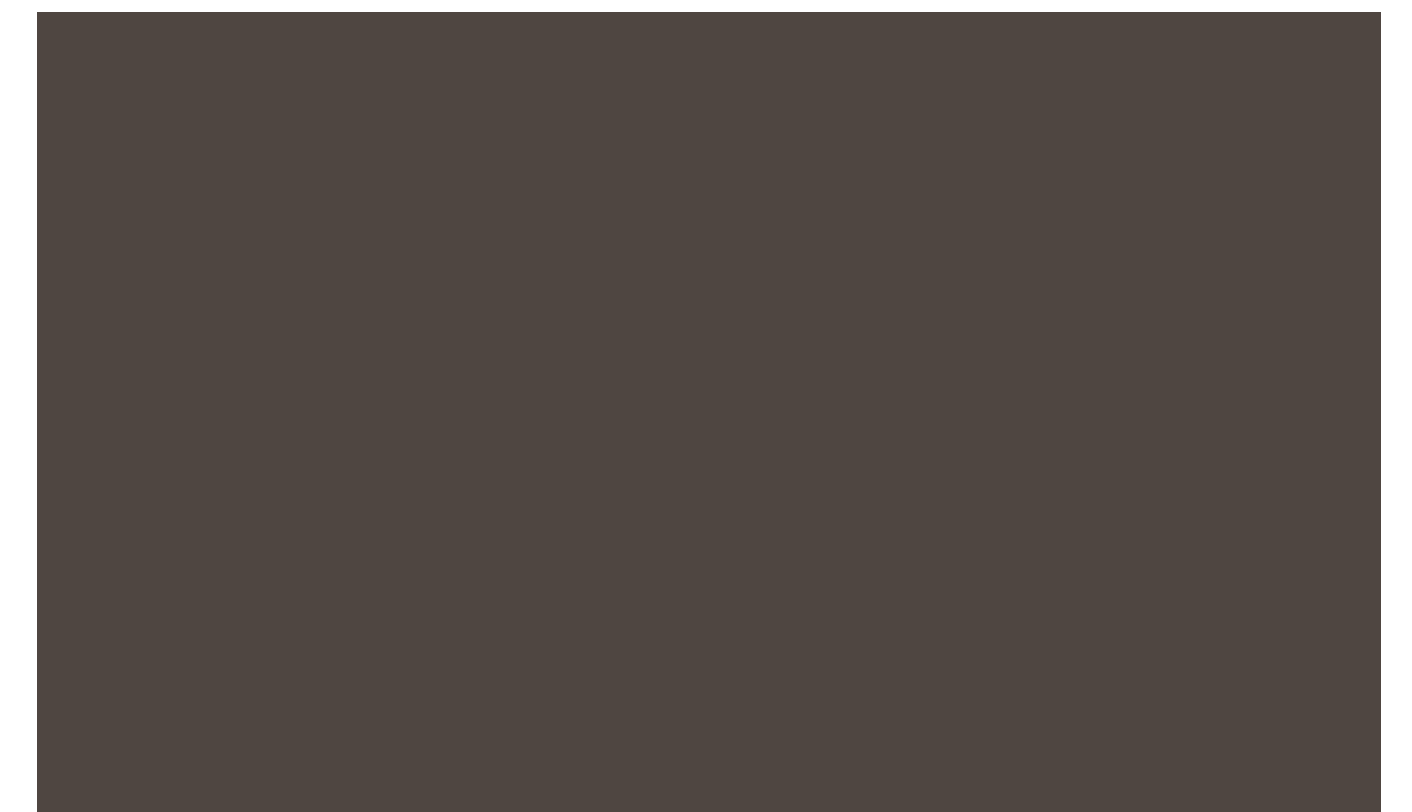
C-1 MCI Midnight Bronze



C-2 MCI Brite Red



Anodized - Dark Bronze



Paint - Black Fox

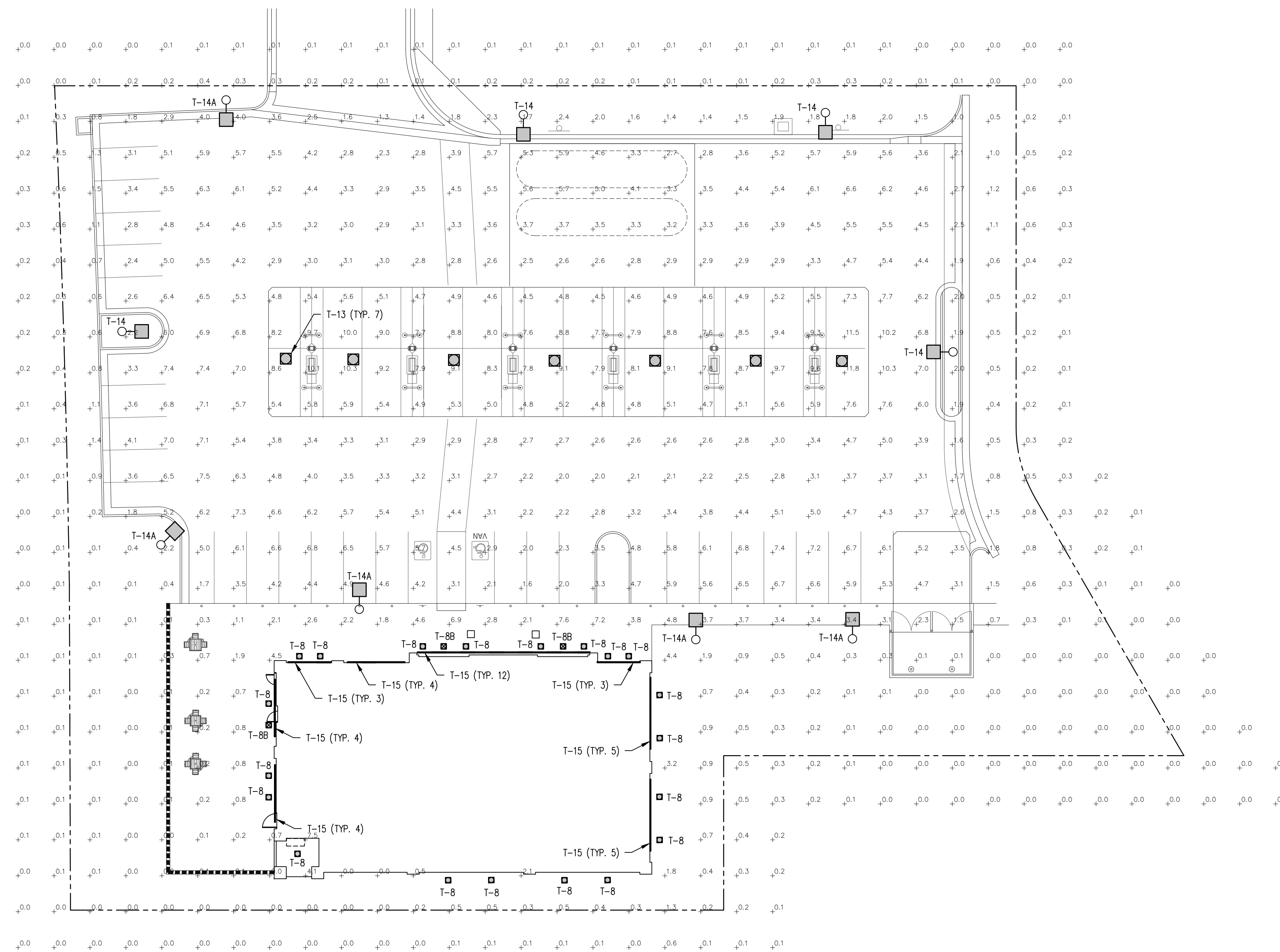
**DCI**  
ENGINEERS  
1331 17TH STREET SUITE 605  
DENVER, COLORADO 80202  
PHONE: (720) 439-4700  
WEBSITE: www.dci-engineers.com  
CIVIL / STRUCTURAL

**EXTERIOR  
MATERIALS  
BOARD**

D:\Lincoln\Professional Park\21-122-0001\_Parker\_Regional\_District.dwg

# LINCOLN PROFESSIONAL PARK FILING NO. 1 LOT 1 MAVERIK INC. STORE SITE PLAN

SITUATED IN THE NORTHWEST ¼ OF SECTION 15,  
TOWNSHIP 6 SOUTH, RANGE 66 WEST OF THE 6TH P.M.  
TOWN OF PARKER, COUNTY OF DOUGLAS, STATE OF COLORADO



**1 SITE PHOTOMETRIC PLAN**  
E-1.2 SCALE: 1"=20'-0"

MASTER LUMINAIRE SCHEDULE									
TYPE	MANUFACTURER	CATALOG NUMBER	VOLTS	MOUNTING	LAMPS	BALLAST	WATTS	IMAGE	
DESCRPT: RECESSED BLACK LED DOWNLIGHT 8" APERTURE, 2900 LUMENS, 4K									
T-8	LOTUS LED	LD8R-40K-HO-BR-BT	120	RECESSED	INCLUDED		30		
T-8B	SAME AS T-8 EXCEPT WITH EMERGENCY BATTERY							30	
DESCRPT: WHITE, CANOPY MOUNTED, CUTOFF LUMINAIRE, 103W LED, FLAT LENS, FOR SINGLE DECK CANOPIES (10,209 LUMENS)									
T-13	LSI	SCV LED 10L SC UNV DIM 40 WHI	UNV	CANOPY	INCLUDED		67		
DESCRPT: POLE MOUNTED, DARK BRONZE CUTOFF LUMINAIRE SINGLE HEAD, INTEGRAL LOUVER, LED, 18,930 LUMENS, 17.5FT SQUARE POLE (4", 11 GA.), 4K									
T-14	LSI	SLM LED 18L SIL 3 UNV 40 70 CRI BRZ IL	208	17"-6" POLE	INCLUDED		135		
T-14A	SAME AS T-14 EXCEPT WITH TYPE IV DISTRIBUTION (FORWARD THROW)							135	
DESCRPT: 4FT LED STRIP LUMINAIRE, FULLY RECESSED IN EXTERIOR COVE, WHITE, COLD WEATHER (0F), 2000 LUMENS, DAMP LISTED, LENS, 4K									
T-15	LSI	AST 4 4L SA UNV 840	UNV	EXTERIOR COVE	INCLUDED		20		

\*LUMINAIRES ARE PROVIDED BY OWNER, INSTALLED BY E.C. (REFERENCE SCHEDULE ON E-4.0)

CALCULATION SUMMARY								
AREA NAME	GRID / TYPE	SPAC	GROUP	AVE	MAX	MIN	MAX/MIN	AVE/MIN
OVERALL	0'-0" / H-H	10.00	<+>	2.5	11.8	0.00	N/A	N/A
PARKING	0'-0" / H-H	10.00	<+>	4.5	11.2	1.5	7.5:1	3.0:1



185 S. State Street  
Salt Lake City, Utah 84111

THESE PLANS ARE SUBJECT TO FEDERAL COPYRIGHT LAWS: ANY USE OF SAME WITHOUT THE EXPRESSED WRITTEN PERMISSION OF MAVERIK, INC IS PROHIBITED. 2019 MAVERIK, INC.

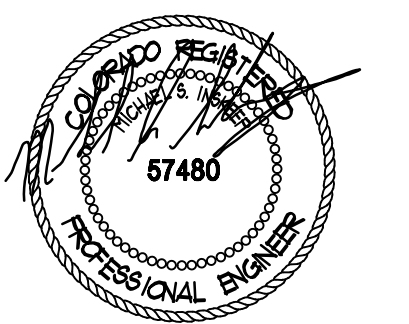
ARCHITECT:

ENGINEER:

**NEI**  
Nelson Engineering, Inc.  
Consulting Engineers  
156 North Twelfth Avenue  
Provo, Utah 84601  
Ph (208) 232-2577 FAX  
(208) 234-0918

OWNERSHIP OF DOCUMENTS  
This document, including the ideas and designs incorporated herein, is the property of NELSON ENGINEERING, INC. and shall not be used, in whole or in part, for any other project without the written permission of an authorized representative of NELSON ENGINEERING, INC. Unauthorized use will be prosecuted to the full extent of the law.  
Copyright © 2022  
by: NELSON ENGINEERING, INC.

STAMP:



**MAVERIK, INC.**  
**STORE #**

**LINCOLN AVENUE AND  
DRANSFELDT ROAD  
PARKER, CO**

REVISIONS	
DESCRIPTION	DATE

DESIGNED BY: MJE DRAWN BY: MJE  
REVIEWED BY: MJE APPROVED BY: MSI  
PROTOTYPE VERSION: 50  
DRAWING ISSUE  
DATE: 11-3-22  
PROJECT NUMBER: 21337

SHEET NAME

**PHOTOMETRIC PLAN**

SHEET NUMBER

**26.0 OF 26**



