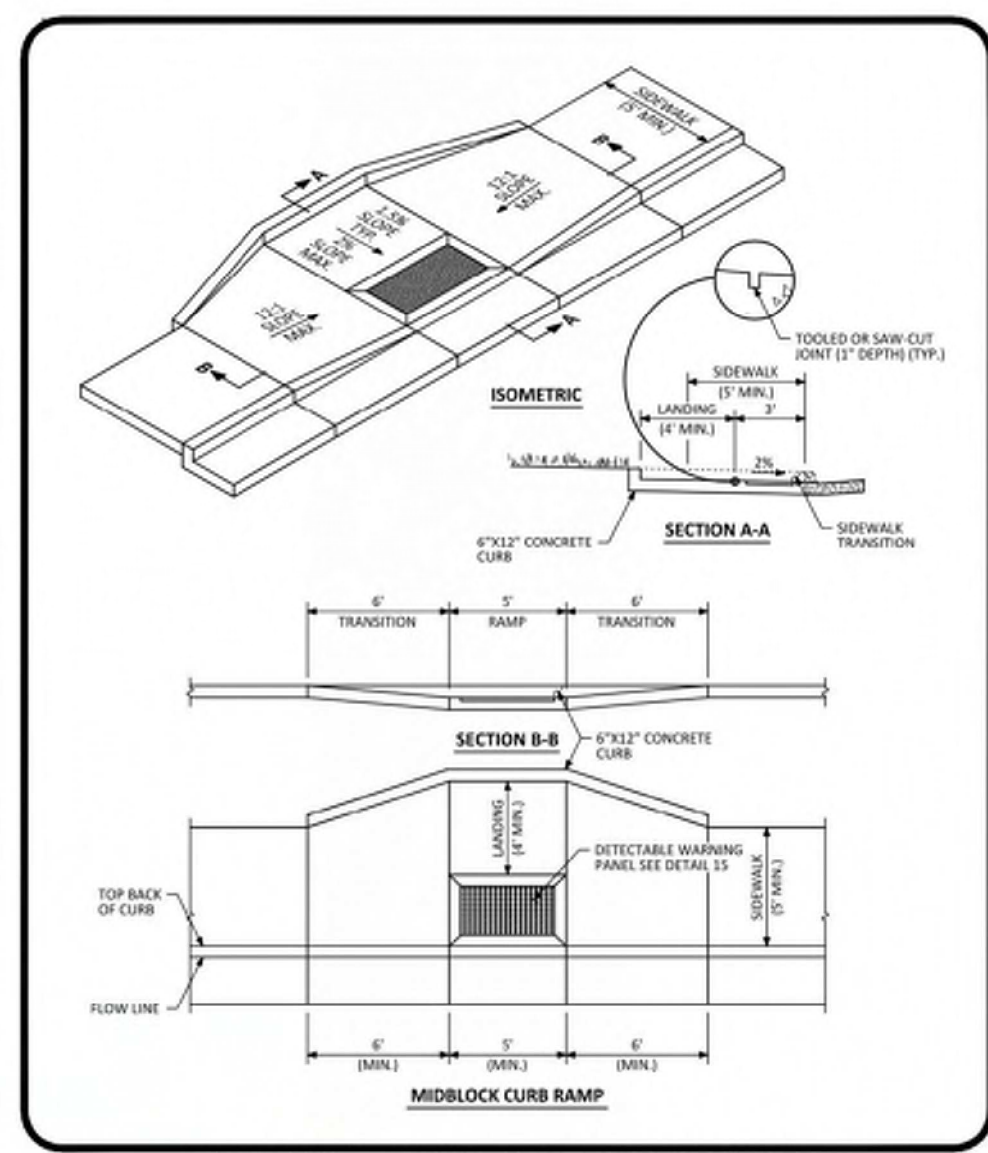
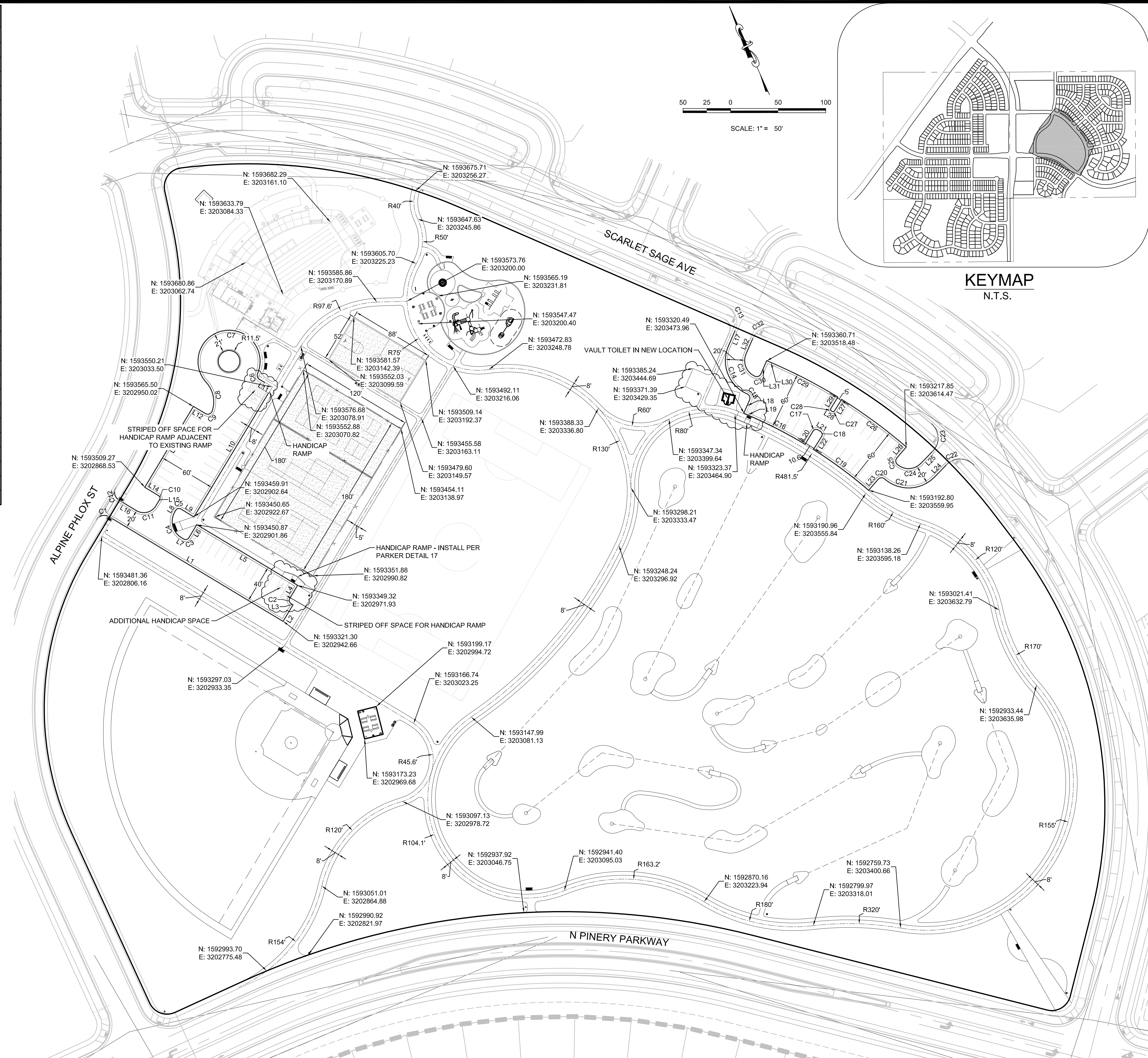


LINE TABLE			CURVE TABLE			
LINE NO.	LENGTH	DIRECTION	CURVE NO.	LENGTH	RADIUS	DELTA
L1	212.26'	N34°36'25"W	C1	15.71'	10.00'	90°00'00"
L2	20.00'	N55°23'35"E	C2	6.28'	4.00'	90°00'00"
L3	2.44'	N34°36'25"W	C3	6.28'	4.00'	90°00'00"
L4	16.00'	N55°23'35"E	C4	31.42'	20.00'	90°00'00"
L5	123.37'	S34°36'25"E	C5	6.28'	4.00'	90°00'00"
L6	16.00'	N55°23'35"E	C6	7.18'	5.00'	82°17'23"
L7	3.00'	S34°36'25"E	C7	139.56'	32.50'	246°01'46"
L8	1.77'	S55°23'35"W	C8	32.57'	30.00'	62°12'10"
L9	16.00'	N34°36'25"W	C9	8.86'	5.00'	101°32'13"
L10	159.00'	S55°23'35"W	C10	4.71'	3.00'	90°00'00"
L11	15.34'	N34°36'25"W	C11	23.56'	15.00'	90°00'00"
L12	14.49'	N34°36'25"W	C12	15.71'	10.00'	90°00'03"
L13	99.00'	S55°23'35"W	C13	31.42'	20.00'	90°00'00"
L14	17.00'	S34°36'25"E	C14	59.69'	38.00'	90°00'00"
L15	7.74'	S55°23'35"W	C15	7.85'	5.00'	90°00'00"
L16	20.45'	N34°36'25"W	C16	63.48'	486.00'	7°29'00"
L17	18.00'	S47°54'30"W	C17	6.33'	4.00'	90°37'27"
L18	15.00'	S47°54'30"W	C18	6.33'	4.00'	90°37'27"
L19	8.52'	N42°05'30"W	C19	72.00'	486.00'	8°29'18"
L20	15.96'	N55°23'30"E	C20	7.90'	5.00'	90°30'01"
L21	2.94'	S33°59'03"E	C21	57.69'	38.00'	86°59'01"
L22	15.96'	S56°38'24"W	C22	32.48'	20.00'	93°03'36"
L23	14.98'	S65°07'42"W	C23	32.48'	20.00'	93°03'36"
L24	17.92'	S68°38'41"W	C24	27.35'	18.00'	87°02'59"
L25	17.92'	N68°38'41"E	C25	7.81'	5.00'	89°27'38"
L26	15.02'	N65°08'59"E	C26	84.08'	546.00'	8°49'24"
L27	14.01'	N56°19'36"E	C27	3.14'	2.00'	90°00'00"
L28	0.86'	S33°40'24"E	C28	3.12'	2.00'	89°28'36"
L29	14.01'	S55°48'11"W	C29	75.23'	546.00'	7°53'41"
L30	8.52'	S42°05'30"E	C30	7.85'	5.00'	90°00'00"
L31	15.00'	N47°54'30"E	C31	28.27'	18.00'	90°00'00"
L32	17.99'	N47°54'30"E	C32	31.38'	20.00'	89°54'10"



MIDBLOCK CURB RAMP LAYOUT STANDARD DETAIL
 DATE: AUGUST 2014
 DETAIL: 17
 2 OF 2

THE TOWN OF PARKER REVIEW CONSTITUTES GENERAL COMPLIANCE WITH THE TOWN'S STANDARDS AND APPROVED VARIANCES, SUBJECT TO THESE PLANS BEING STAMPED, SIGN, AND DATED BY THE PROFESSIONAL ENGINEER OF RECORD. REVIEW BY THE TOWN DOES NOT CONSTITUTE APPROVAL OF THE PLAN DESIGN OR ACCURACY AND CORRECTNESS OF ENGINEERING CALCULATIONS. ERRORS IN THE DESIGN OR CALCULATIONS REMAIN THE RESPONSIBILITY OF THE REGISTERED PROFESSIONAL ENGINEER WHOSE STAMP AND SIGNATURE ARE AFFIXED TO THIS DOCUMENT.

THIS REVIEW DOES NOT CONSTITUTE APPROVAL OF ANY PRIVATE ON-SITE IMPROVEMENTS WHICH MAY BE SHOWN. CONSTRUCTION CANNOT COMMENCE UNTIL ALL REQUIRED DRAINAGE/TRAFFIC REPORT(S), FINAL DEVELOPMENT PLAN(S), SPECIAL REVIEW(S), GRADING PERMIT, AND/OR OTHER PERMITS ARE COMPLETE, APPROVED AND ON FILE WITH THE TOWN OF PARKER.

Prepared For:
 HR 935 LLC
 7353 SOUTH ALTON WAY
 CENTENNIAL, CO 80112

Land Planning
 people creating spaces

pcs group inc. www.pcsgruopco.com
 #3, 8-180 Independence plaza
 1007 16th street, denver, co 80265
 1.303.531.4905 / 1.303.531.4908

Engineering
CVL
 CONSULTANTS
 10333 E. DRY CREEK RD. #240
 ENGLEWOOD, CO 80112
 720-482-9526

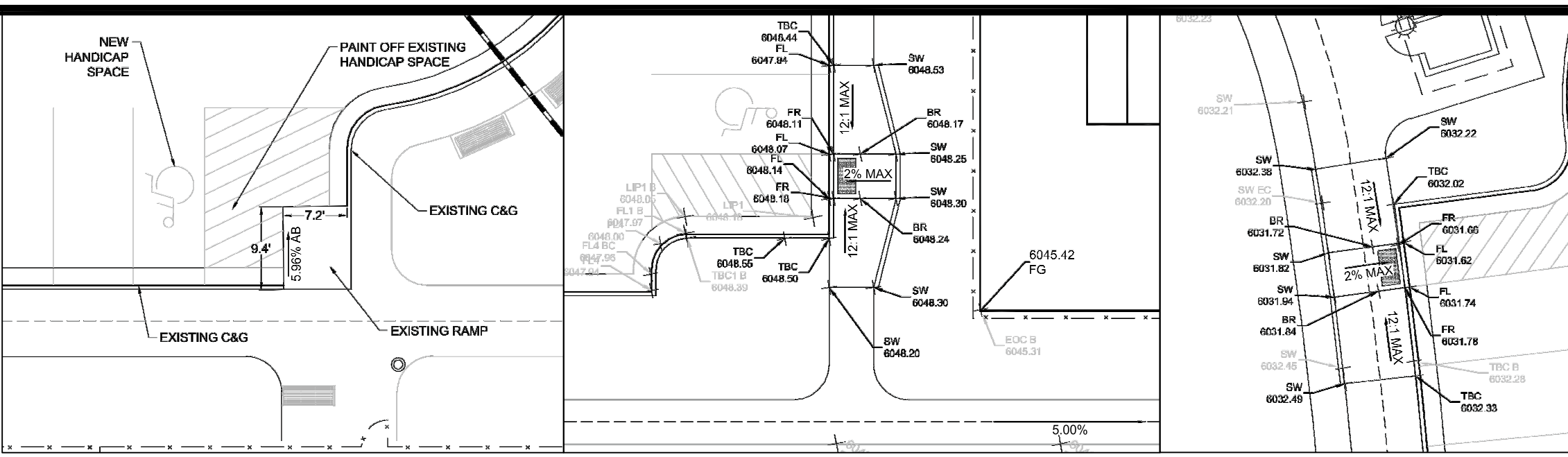
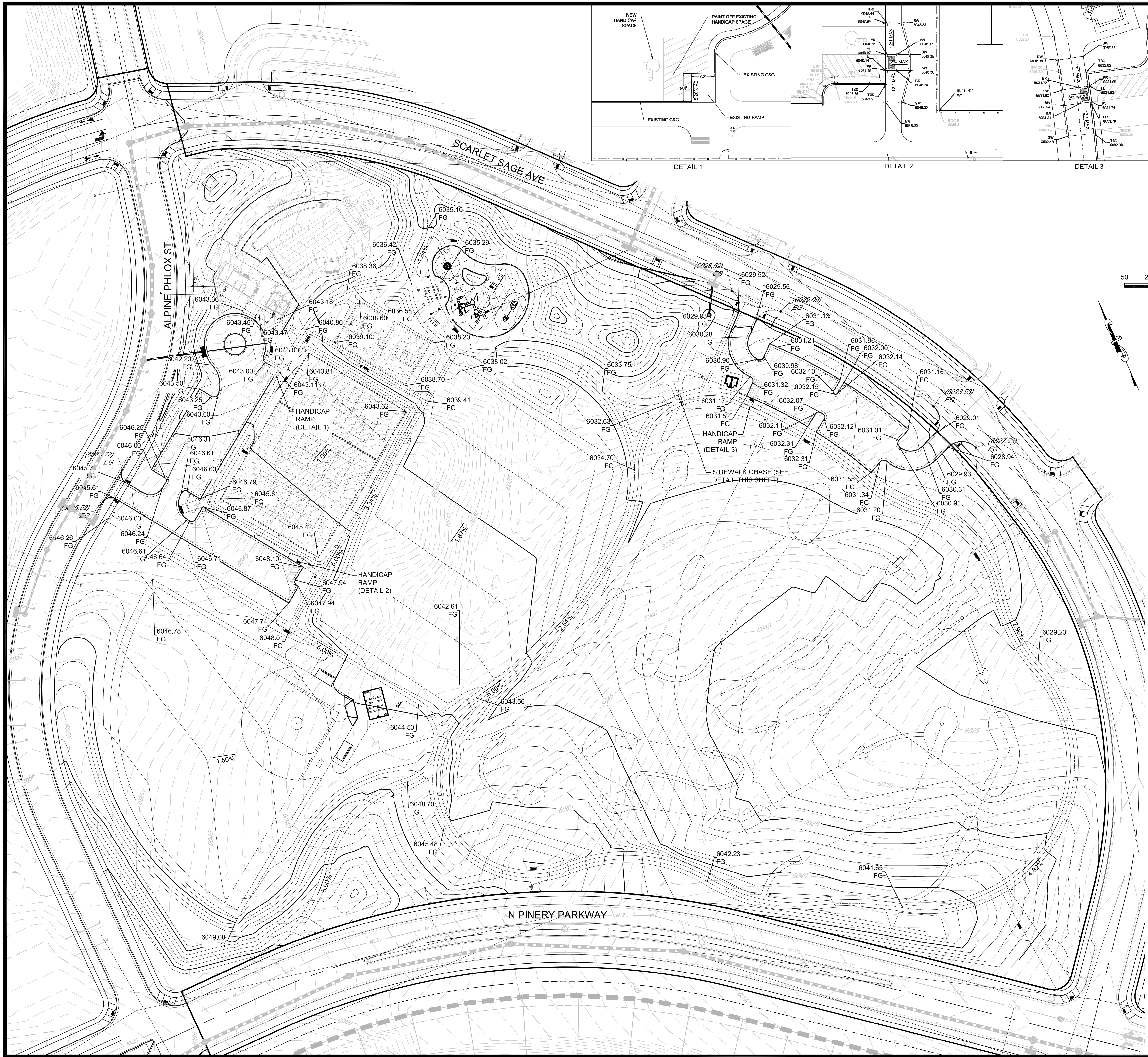
TRAILS AT CROWFOOT
 PARK PLANS
 PARKER, COLORADO
 LANDSCAPE PLANS

Drawn by: CA
 Checked by: BFW
 Submittal Date: 08.11.2017

Know what's below.
 Call before you dig.
811

Sheet Name:
HORIZONTAL CONTROL PLAN

Sheet Number:
L.03

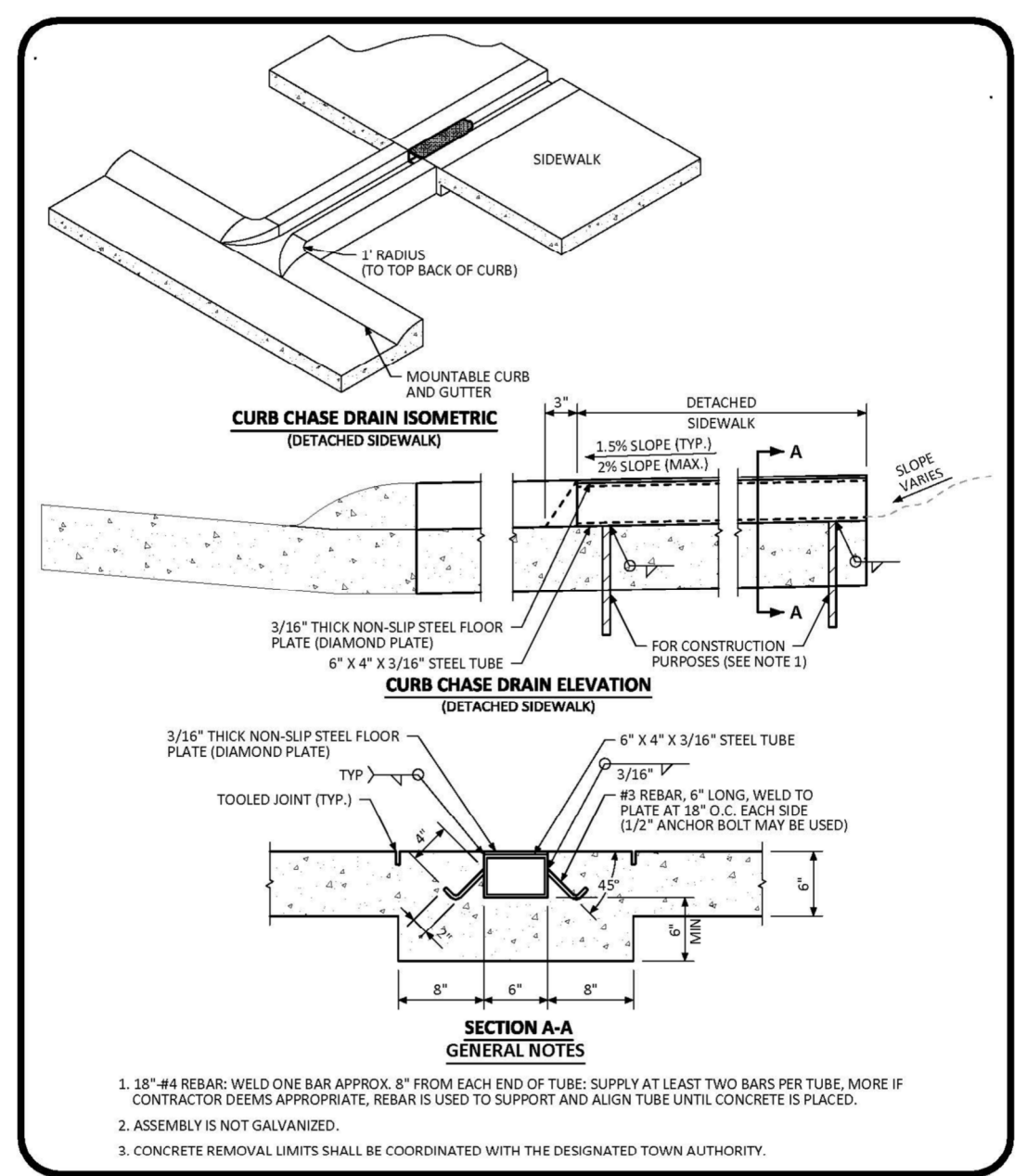


SCALE: 1" = 50'
 50 25 0 50 100
KEYMAP
 N.T.S.
LEGEND

②	BLOCK NUMBER	←	PROPOSED OVERLAND FLOW
(A)	LOT TYPE	- - -	CENTERLINE
6	LOT NUMBER	—	RIGHT-OF-WAY
▽	EXISTING FLARED END SECTION	—	PROPERTY LINE
—	EXISTING STORM DRAIN INLET	—	EDGE OF PAVEMENT
●	EXISTING STORM DRAIN MANHOLE	— 5615	EXISTING 5' CONTOUR
☼	PROPOSED LIGHT POLE	— 5616	EXISTING 1' CONTOUR
—	PROPOSED SIDEWALK	— 5620	PROPOSED 5' CONTOUR
—	PROPOSED SIDEWALK RAMP	— 5607	PROPOSED 1' CONTOUR
10.00	EXISTING ELEVATION	—	EXISTING STORM DRAIN
10.00	PROPOSED DESIGN ELEVATION	- - -	SECTION LINE
00.0 FG	PROPOSED FINISHED GRADE	—	FILING BOUNDARY
		1.0%	PROPOSED SLOPE & DIRECTION

ABBREVIATIONS

AD	ANGLE DIFFERENCE	PL	PROPERTY LINE
EL	ELEVATION	PVC	POLYVINYL CHLORIDE
FG	FINISHED GRADE	RCBC	REINFORCED CONCRETE BOX CULVERT
FL	FLOW LINE	RCP	REINFORCED CONCRETE PIPE
FV	FIELD VERIFY	ROW	RIGHT OF WAY
GE	GAS EASEMENT	SD	STORM DRAIN
HP	HIGH POINT	SL	SECTION LINE
INV	INVERT	STA	STATION
LF	LINEAR FEET	STA	T.O.P. TOP OF PIPE
LP	LOW POINT	UE	UTILITY EASEMENT
MH	MANHOLE	WSE	WATER SURFACE ELEVATION
N.T.S.	NOT TO SCALE		



Parker COLORADO

CURB CHASE DRAIN (RESIDENTIAL) LAYOUT STANDARD DETAIL

DATE: AUGUST 2014

DETAIL: 29

1 OF 2

Prepared For:

HR 935 LLC
 7353 SOUTH ALTON WAY
 CENTENNIAL, CO 80112

Land Planning

people creating spaces

pcs group inc. www.pcsgruopco.com
 #3, 8-180 Independence plaza
 1007 14th street, denver, co 80265
 1.303.531.4905 / 1.303.531.4908

Engineering

CVL
 CONSULTANTS

10333 E. DRY CREEK RD. #240
 ENGLEWOOD, CO 80112
 720-482-9526

TRAILS AT CROWFOOT
 PARK PLANS
 PARKER, COLORADO
 LANDSCAPE PLANS

Drawn by: CA
 Checked by: BFW
 Submittal Date: 08.11.2017

Know what's below.
 Call before you dig.

811

Sheet Name: **PARK GRADING PLAN**

Sheet Number: **L.04**