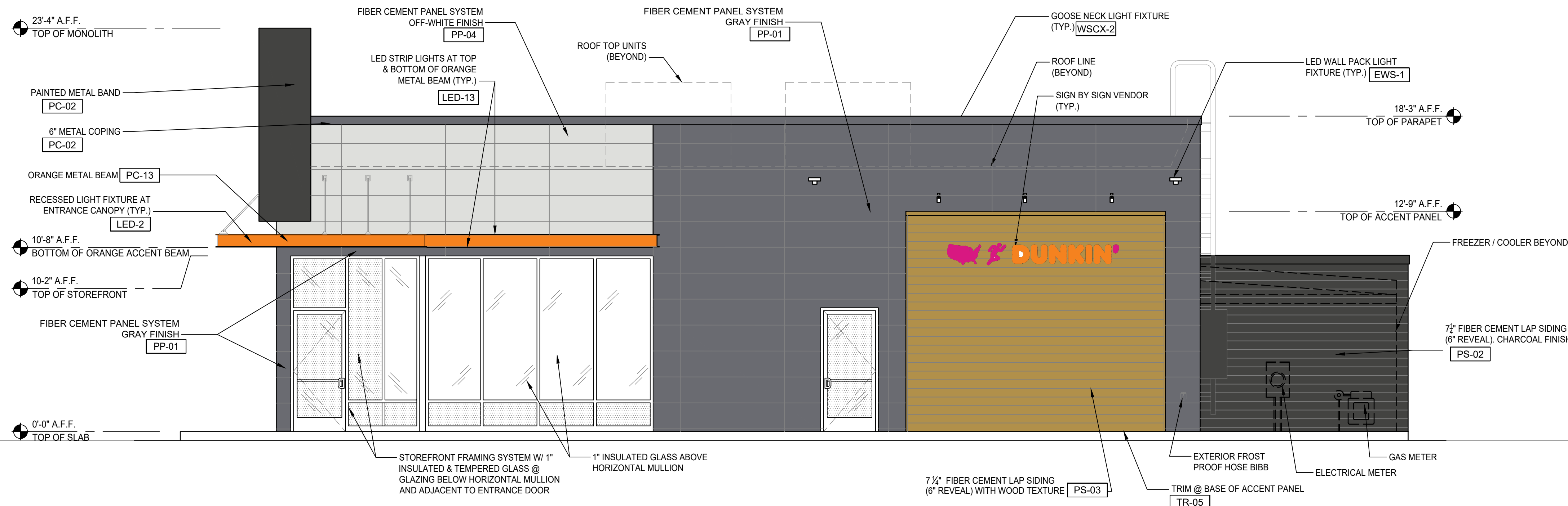


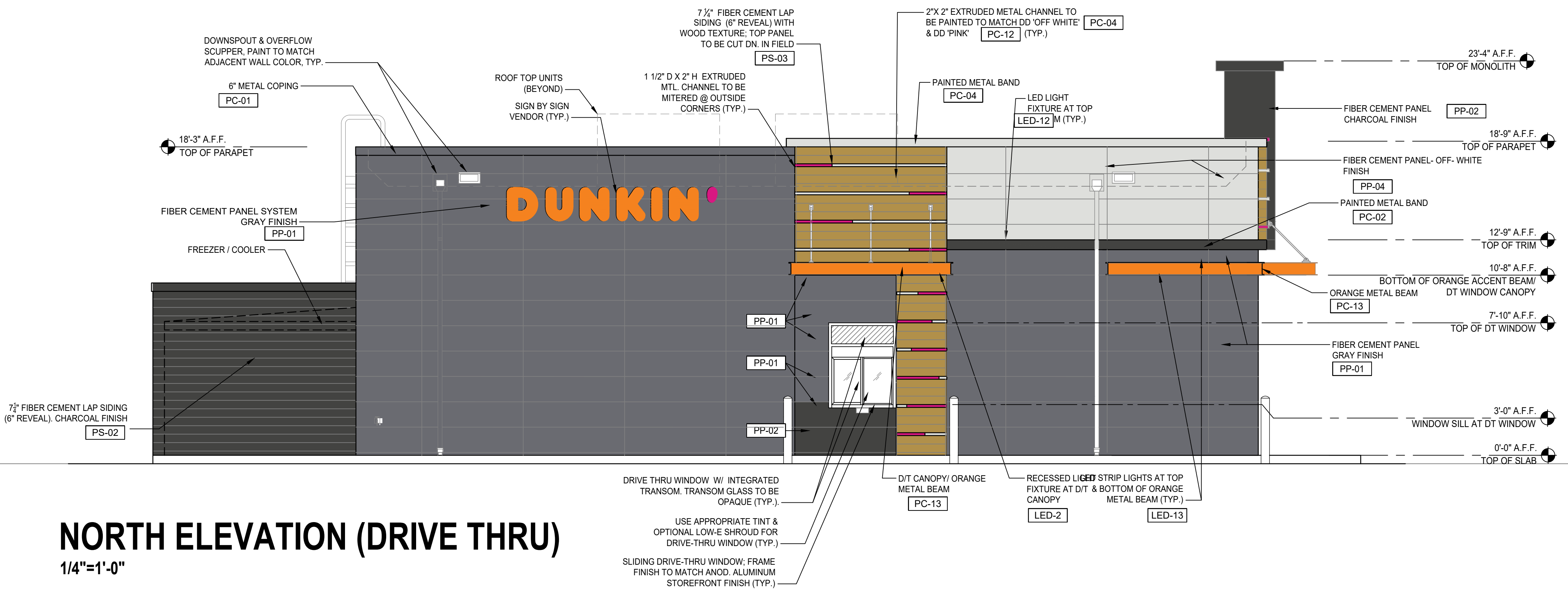
SITE PLAN
DUNKIN' DONUTS

DOUGLAS 234, FILING NO. 6, AMENDMENT 1, LOT 4



SOUTH ELEVATION (PARKING SIDE)

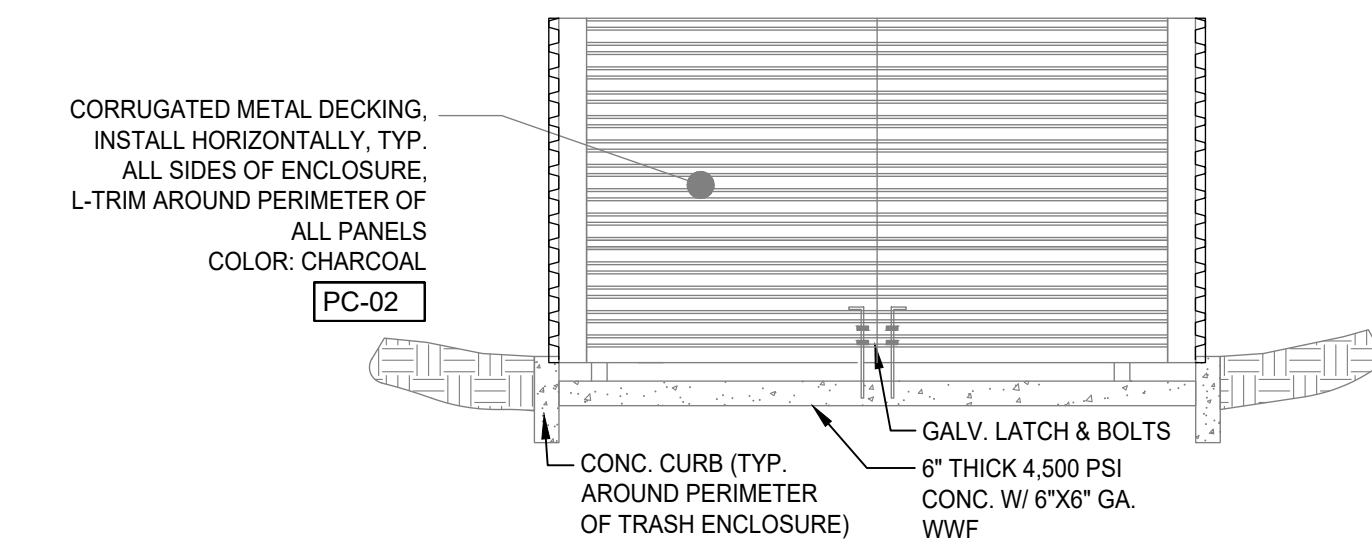
1/4"=1'-0"



NORTH ELEVATION (DRIVE THRU)

1/4"=1'-0"

MATERIAL SCHEDULE			
CODE	MATERIAL	MANUFACTURER	PRODUCT #
PP-01	FIBER-CEMENT CLADDING	NICHIHA	GRAY FINISH TUFFBLOCK "PEWTER" EPF641F
PP-02	FIBER-CEMENT CLADDING	NICHIHA	CHARCOAL FINISH TUFFBLOCK "STEEL" EPF644F
PP-04	FIBER-CEMENT CLADDING	NICHIHA	OFF WHITE FINISH MIRAIA SNOW - EDM1014SUS AWP 18X18 SMOOTH
PS-02	FIBER CEMENT SIDING	JAMES HARDIE	CHARCOAL FINISH WOOD FINISH RUSTIC SERIES WOODTONE
PS-03	FIBER CEMENT SIDING	WOODTONE	CHARCOAL FINISH SW 7069 "IRON ORE"
PC-02	PAINTED COATING	SHERWIN WILLIAMS	OFF WHITE FINISH SW 7063 "NEBULOUS WHITE"
PC-04	PAINTED COATING	POWDER COAT	DD PINK FINISH-COLOR MATCH PMS 219 C
PC-12	PAINTED COATING	SHERWIN WILLIAMS	DD PINK FINISH-COLOR MATCH PMS 219 C
PC-13	PAINTED COATING	SHERWIN WILLIAMS	DD ORANGE FINISH COLOR # 5059990

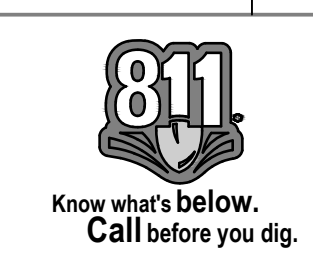


TRASH ENCLOSURE (FRONT)

1/4"=1'-0"

8678 CONCORD CENTER DR, UNIT 200
 ENGLEWOOD, CO 80112
 303.537.8020
RICK
 ENGINEERING COMPANY
 San Diego - Riverside - San Luis Obispo - Sacramento - Orange - Phoenix - Las Vegas - Denver

**DOUGLAS 234, FILING NO. 6,
 AMENDMENT 1, LOT 4**

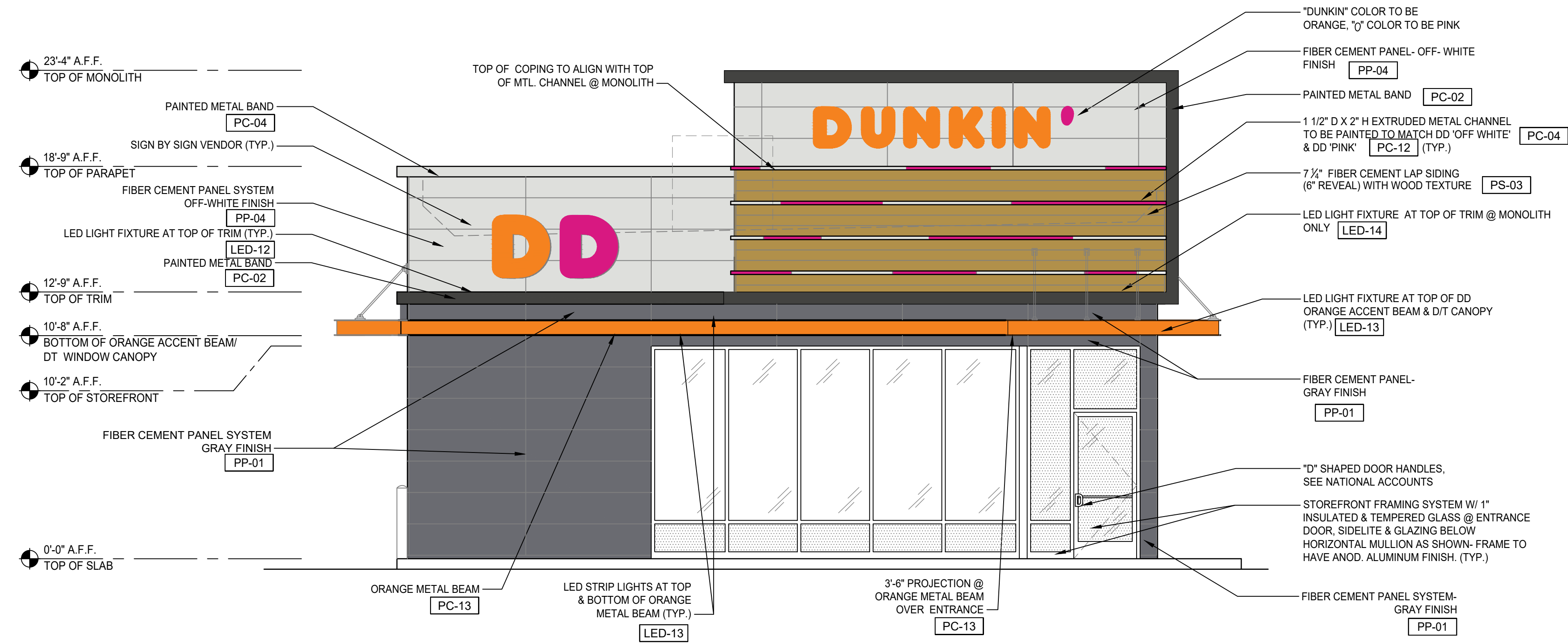


NO.	BY	DATE	REVISION

PROJECT NO.:
 DATE:
 DRAWN/DESIGNED BY:
 CHECKED BY:

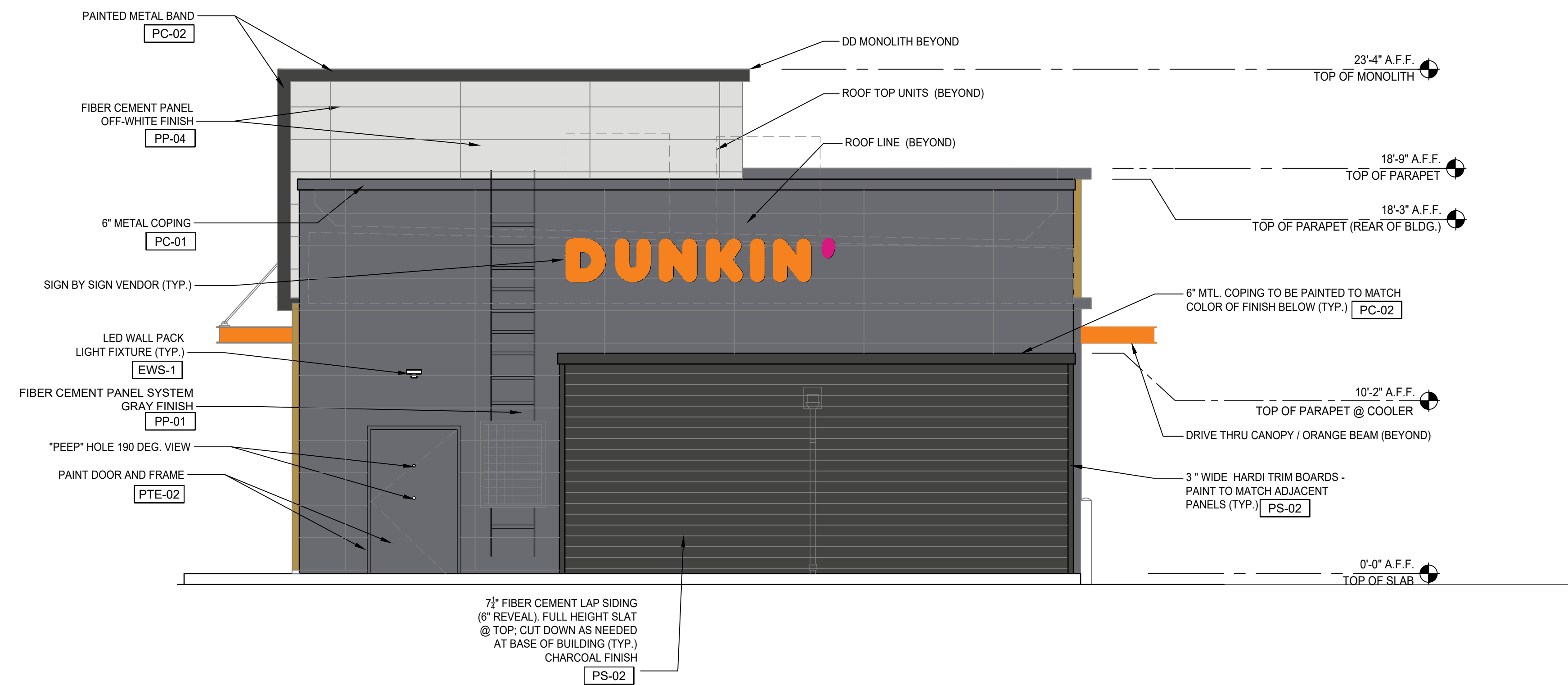
SITE PLAN
DUNKIN' DONUTS

DOUGLAS 234, FILING NO. 6, AMENDMENT 1, LOT 4



MATERIAL SCHEDULE			
CODE	MATERIAL	MANUFACTURER	PRODUCT #
PP-01	FIBER-CEMENT CLADDING	NICHIHA	GRAY FINISH TUFFBLOCK "PEWTER" EPF641F
PP-02	FIBER-CEMENT CLADDING	NICHIHA	CHARCOAL FINISH TUFFBLOCK "STEEL" EPF644F
PP-04	FIBER-CEMENT CLADDING	NICHIHA	OFF WHITE FINISH MIRAIA SNOW - EDM1014SUS AWP 18X18 SMOOTH
PS-02	FIBER CEMENT SIDING	JAMES HARDIE	CHARCOAL FINISH WOOD FINISH RUSTIC SERIES WOODTONE
PS-03	FIBER CEMENT SIDING	WOODTONE	CHARCOAL FINISH SW 7069 "IRON ORE"
PC-02	PAINTED COATING	SHERWIN WILLIAMS	OFF WHITE FINISH SW 7063 "NEBULOUS WHITE"
PC-04	PAINTED COATING	POWDER COAT	DD PINK FINISH-COLOR MATCH PMS 219 C
PC-12	PAINTED COATING	SHERWIN WILLIAMS	DD ORANGE FINISH COLOR # 5059990
PC-13	PAINTED COATING	SHERWIN WILLIAMS	

WEST ELEVATION (PARKING/ CHAMBERS)
1/4"=1'-0"



EAST ELEVATION (BACK)
1/4"=1'-0"

8678 CONCORD CENTER DR, UNIT 200
 ENGLEWOOD, CO 80112
 303.537.8020
RICK
 ENGINEERING COMPANY
 San Diego - Riverside - San Luis Obispo - Sacramento - Orange - Tucson - Phoenix - Las Vegas - Denver
 rickengineering.com

**DOUGLAS 234, FILING NO. 6,
AMENDMENT 1, LOT 4**



NO.	BY	DATE	REVISION

PROJECT NO: _____
 DATE: _____
 DRAWN/DESIGNED BY: _____
 CHECKED BY: _____