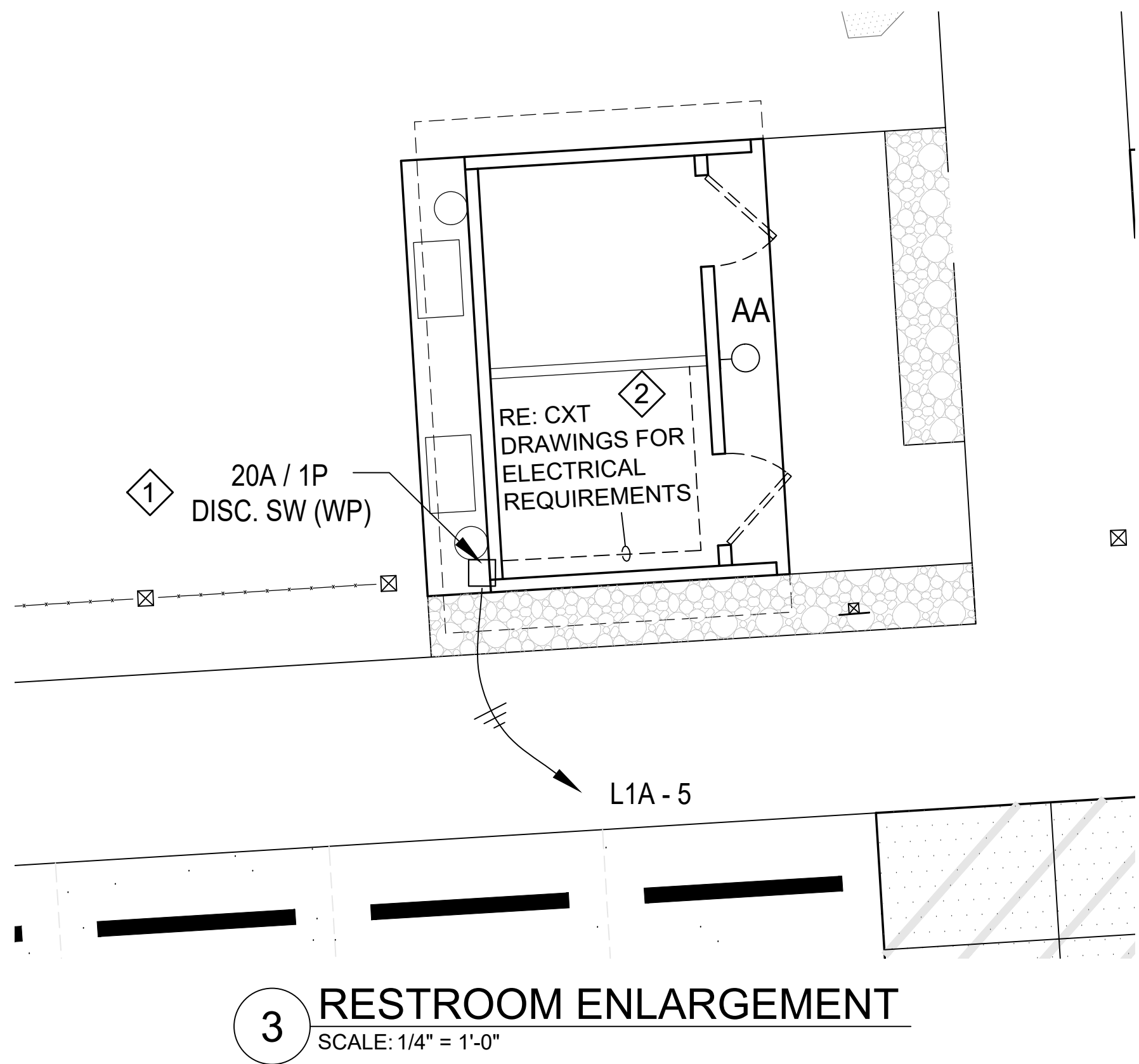




LUMINAIRE SCHEDULE											
DESIGNATION	DESCRIPTION	LAMPS		VOLTAGE	TOTAL VA	MANUFACTURER			MOUNTING		REMARKS
		QTY.	TYPE			NAME	CATALOG SERIES	CCT	TYPE	HEIGHT	
AA	WALL PACK	1	LED	120	15	RAB LIGHTING	SLIM17FA15/ADJ	3000K	SURFACE	8'-6"	FULL CUT-OFF



SHEET NOTES

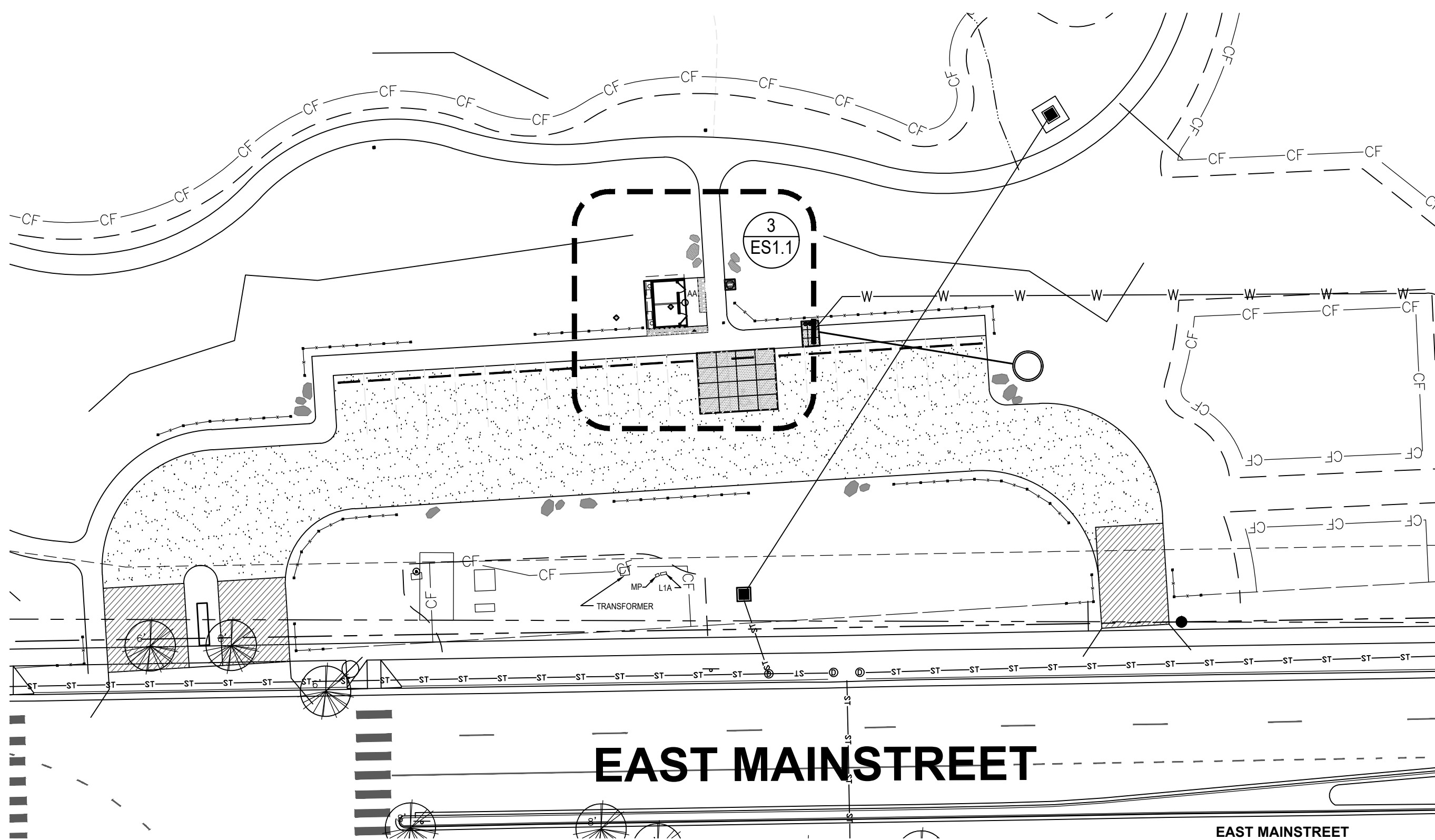
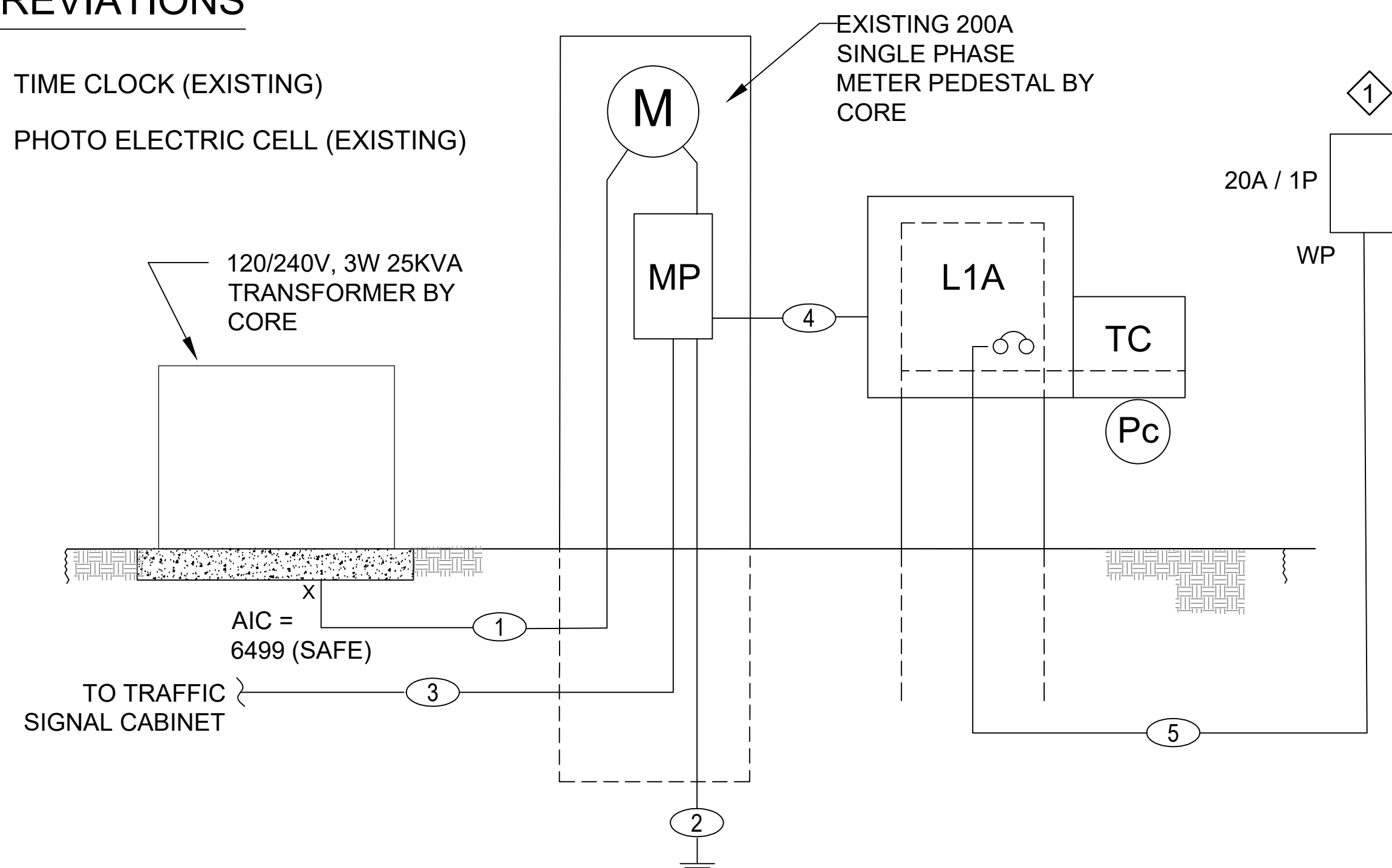
- ① CONTRACTOR TO PROVIDE 20A/1P WEATHER PROOF (NEMA 4 ENCLOSURE) LOCKABLE DISCONNECT SWITCH AND KNOX BOX FOR KEY AT RESTROOM WHERE SHOWN.
- ② CONTRACTOR TO PROVIDE ALL ELECTRICAL REQUIREMENTS IN THEIR BID.

FEEDER SCHEDULE (EXISTING)

- ① 3 #3/0 CU, THHN / THWN, #6 CU GND, 2" C
- ② 1 #3 4 CU GND, 3/4" C
- ③ 2 #8 CU, THHN / TWWN, #10 CU GND, 3/4" C
- ④ 3 #8 CU, THHN / TWWN, #10 CU GND, 1" C
- ⑤ 2 #10 CU, THHN / TWWN, #10 CU GND, 3/4" C

ABBREVIATIONS

- TC = TIME CLOCK (EXISTING)
- Pc = PHOTO ELECTRIC CELL (EXISTING)



① **SITE ELECTRICAL PLAN**
SCALE: 1" = 30'

② **EXISTING ELECTRICAL DISTRIBUTION SYSTEM**
SCALE: N.T.S

PANEL: "L1A"															
CIRCUIT CODE	TRIP	POLE	LOAD DESIGNATION	(NOTE)	CONNECTED VA				LOAD DESIGNATION	TRIP	POLE	CIRCUIT CODE	CIRCUIT NO		
					ØA	ØB	ØA	ØB							
1	L	20	1	INTERSECTION LIGHTS	1	1200	-	-	1200	1	DECORATIVE LIGHTS	20	1	L	2
3	O	20	1	IRRIGATION CONTROLLER	1	400	-	-	1200	1	DECORATIVE LIGHTS	20	1	L	4
13	L	20	1	RESTROOM EXTERIOR LT.	2	15	-	-	-	-	SPACE	-	-	-	6
7	L	20	1	SPACE	-	-	-	-	-	-	SPACE	-	-	-	8
PHASE TOTALS					PH A:	2415			PH B:	1600					
TOTAL CONNECTED VA											4015				
PANEL CONNECTED KVA											4.02				
PANEL DEMAND KVA											4.92				
PANEL DEMAND AMPS											13.7				
MANUFACTURER:											EXISTING				
TYPE:											LOAD CENTER				

PANEL "MP" LOAD CALCULATION


LIGHTING	3615	VOLTAMPS x	1.25	=	4520	SPMATLOV
RECEPTACLES - 1ST 10KVA	0	VOLTAMPS x	1.00	=	0	VOLTAMPS
RECEPTACLES - BALANCE	0	VOLTAMPS x	0.50	=	0	VOLTAMPS
LARGEST MOTOR LOAD	0	VOLTAMPS x	1.25	=	0	VOLTAMPS
BALANCE OF MOTOR LOADS	0	VOLTAMPS x	1.00	=	0	VOLTAMPS
KITCHEN EQUIPMENT	0	VOLTAMPS x	0.65	=	0	VOLTAMPS
ELECTRIC HEATING EQUIPMENT	0	VOLTAMPS x	1.00	=	0	VOLTAMPS
MISC LOADS	400	VOLTAMPS x	1.00	=	400	VOLTAMPS
TOTAL CALCULATED DEMAND LOAD						4920
						13.7
						FULL LOAD AMPS

PANEL: MP														
CIRCUIT CODE	TRIP	POLE	LOAD DESIGNATION	(NOTE)	CONNECTED VA				LOAD DESIGNATION	TRIP	POLE	CIRCUIT CODE	CIRCUIT NO	
					ØA	ØB	ØA	ØB						
1	L	60	1	SUB PANEL "L1A"	1	2460	-	-	-	-	-	-	-	2
3	L	2	1	TRAFFIC SIGNAL CABINET	1	2460	-	-	-	-	-	-	-	4
PHASE TOTALS					PH A:	4920			PH B:	4800				
TOTAL CONNECTED VA											0			
PANEL CONNECTED KVA											0.0			
PANEL DEMAND KVA											0.0			
PANEL DEMAND AMPS											0.0			
MANUFACTURER:											EXISTING			
TYPE:											LOAD CENTER			

PANEL "MP" LOAD CALCULATION

LIGHTING	3615	VOLTAMPS x	1.25	=	4520	SPMATLOV
RECEPTACLES - 1ST 10KVA	0	VOLTAMPS x	1.00	=	0	VOLTAMPS
RECEPTACLES - BALANCE	0	VOLTAMPS x	0.50	=	0	VOLTAMPS
LARGEST MOTOR LOAD	0	VOLTAMPS x	1.25	=	0	VOLTAMPS
BALANCE OF MOTOR LOADS	0	VOLTAMPS x	1.00	=	0	VOLTAMPS
KITCHEN EQUIPMENT	0	VOLTAMPS x	0.65	=	0	VOLTAMPS
ELECTRIC HEATING EQUIPMENT	0	VOLTAMPS x	1.00	=	0	VOLTAMPS
MISC LOADS	400	VOLTAMPS x	1.00	=	400	VOLTAMPS
TOTAL CALCULATED DEMAND LOAD						9720
						27.0
						FULL LOAD AMPS

SLIM17FA15ADJ **RAB**



Color: Bronze Weight: 3.0 lbs

Project: _____ Type: _____
Prepared By: _____ Date: _____

Driver Info		LED Info	
Type	Constant Current	Watts	15W
120V	0.13A	Color Temp	3000K/4000K/5000K
208V	0.07A	Color	70 CRI
240V	0.06A	Accuracy	L70 Lifespan 100,000 Hours
277V	0.05A	Lumens	1761/904/1852
Input Watts	14.2/14/14.2W	Efficacy	124/136.2/130.3 lm/W

Technical Specifications

Field Adjustability Field Adjustable: Color temperature selectable by 3000K, 4000K and 5000K Compliance UL Listed: Suitable for wet locations IESNA LM-79 & LM-80 Testing: RAB LED luminaires and LED components have been tested by an independent laboratory in accordance with IESNA LM-79 and LM-80. DLC Listed: This product is listed by Design Lights Consortium (DLC) as an ultra-efficient premium product that qualifies for the highest tier of rebates from DLC Member Utilities. Designed to meet DLC S.1 requirements. DLC Product Code: PL0MVJQV2Q3 Performance Lifespan: 100,000-Hour LED Lifespan based on IES LM-80 results and TM-21 calculations	LED Characteristics LEDs: Long life, high efficiency, surface mount LEDs Electrical Driver: Constant Current, Class 2, 120-277V, 50/60 Hz, 120V: 0.13A, 208V: 0.07A, 240V: 0.06A, 277V: 0.05A Dimming Driver: Driver includes dimming control wiring for 0-10V dimming systems. Requires separate 0-10V DC dimming circuit. Dims down to 10%. Photocell: 120-277V Integrated button photocell included. Note: All values are typical (tolerance +/- 10%)	Construction IP Rating: Ingress protection rating of IP65 for dust and water Cold Weather Starting: The minimum starting temperature is -40°C (-40°F) Maximum Ambient Temperature: Suitable for use in up to 50°C (122°F) Housing: Precision die-cast aluminum housing and door frame
--	--	--

Need help? Tech help line: (888) 722-1000 Email: sales@rablighting.com Website: www.rablighting.com
Copyright © 2022 RAB Lighting All Rights Reserved Note: Specifications are subject to change at any time without notice

Page 1 of 2

LUMINAIRE SCHEDULE

DESIGNATION	DESCRIPTION	LAMPS		VOLTAGE	TOTAL VA	MANUFACTURER			REMARKS		
		QTY.	TYPE			DESIGN BASIS					
						NAME	CATALOG SERIES	CCT			
AA	WALL PACK	1	LED	120	15	RAB LIGHTING	SLIM17FA15/ADJ	3000K	SURFACE	8'-6"	FULL CUT-OFF

Calculation Summary

Label	CalcType	Units	Avg	Max	Min	Avg/Min	Max/Min
Walkway	Illuminance	Fc	5.71	11.8	2.0	2.86	5.90

