

# SITE PLAN SUBMITTAL

# HARVIE OPEN SPACE PARK

Situated in the North 1/2 & Northeast 1/4 of Section 24,  
Township 6 South, Range 66 West of the 6th P.M.  
Town of Parker, County of Douglas  
State of Colorado.

**20120 EAST MAINSTREET  
PARKER, COLORADO**

## PROJECT COORDINATES

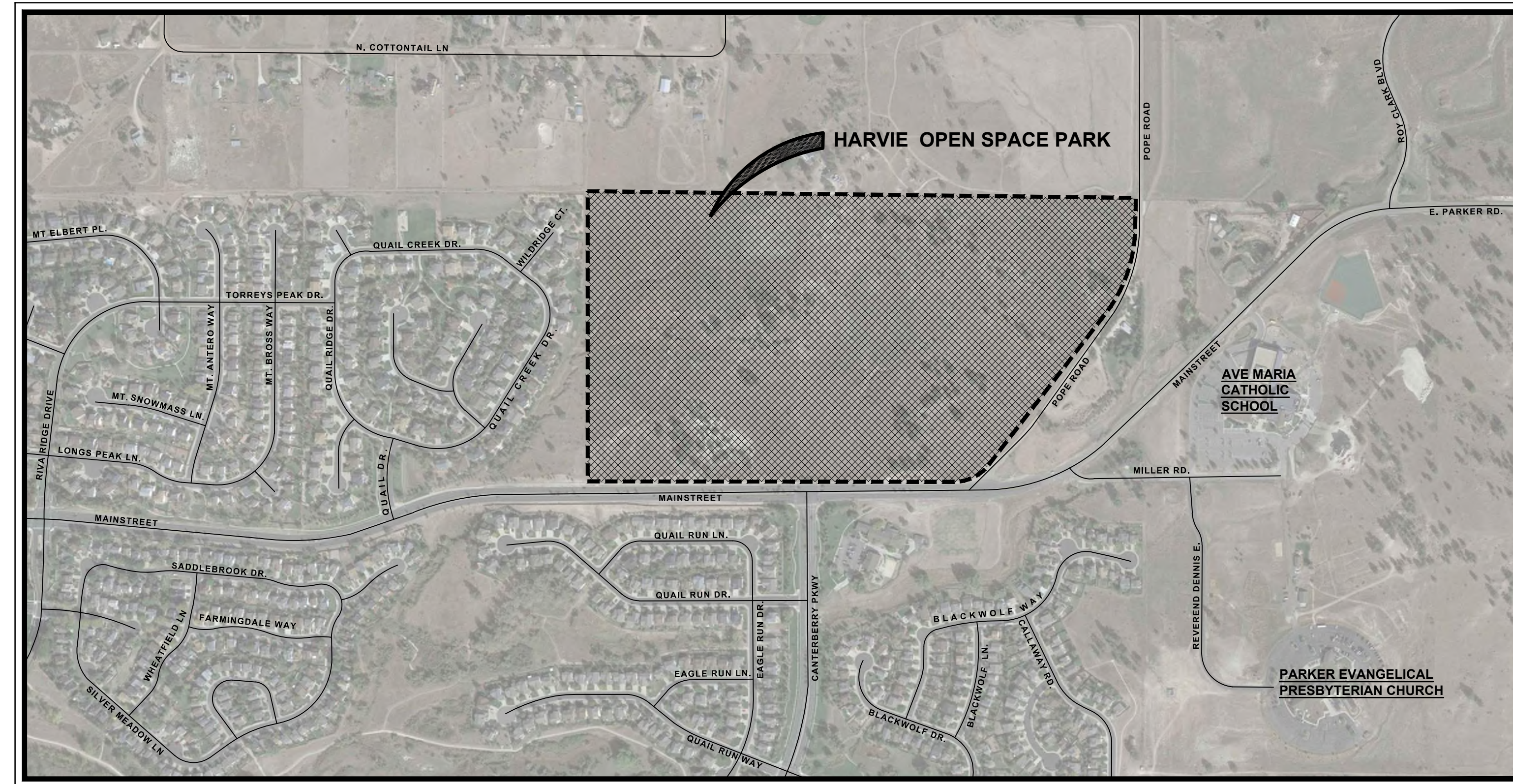
PROJECT COORDINATES ARE MODIFIED COLORADO STATE PLANE CENTRAL ZONE 83(2011) COORDINATES. PROJECT COORDINATES ARE DERIVED FROM STATE PLANE COORDINATES USING THE FOLLOWING FORMULAS:  
PROJECT NORTHING = (STATE PLANE NORTHING \* 1.0003179891) - 1000000.03'  
PROJECT EASTING = (STATE PLANE EASTING \* 1.0003179891) - 3000000.03'

## PROJECT BENCHMARK

LOCATED BENCHMARK: DOUGLASS COUNTY GIS CONTROL POINT 1.090035 BEING A 3 1/4" ALUMINUM CAP LOCATED NEAR THE NORTHEAST CORNER OF THE PARKER CROSSROADS STRIP MALL AT THE INTERSECTION OF S. CROSSROADS DRIVE AND SOUTH PARKER ROAD. MONUMENT IS 4.3 FEET EAST OF THE NORTHERNMOST PARKING SPOT AT THE NORTHEAST CORNER OF THE TREADS BICYCLE SHOP. ELEVATION = 5883.72' (NAVD88)

## CONSERVATION EASEMENT

THIS PARCEL OF LAND IS RESTRICTED BY A CONSERVATION EASEMENT. ALL MANDATES AND REGULATIONS STATED WITHIN THE CONSERVATION EASEMENT DOCUMENT SHALL TAKE PRECEDENCE OVER THESE PLANS.



VICINITY MAP



SCALE: NTS

## SHEET INDEX

SP1.0	COVER SHEET
L1.0	OVERALL SITE PLAN
L2.0-L2.8	EXISTING CONDITIONS & DEMOLITION PLAN
L3.0-L3.3	LAYOUT & MATERIALS PLAN
L6.0-L6.9	ENLARGEMENT PLAN
SG1.0-SG1.2	SITE DETAILS
	SIGNAGE PLAN & DETAILS

### CIVIL ENGINEERING PLANS:

C1.0-C1.13	TRAIL PLAN & PROFILE
C1.14	NATURALIZED CROSSING DETAILS
C2.0-C2.1	BMP PLANS & DETAILS
C3.0	STORM LATERAL
D1.0	DRAINAGE BASIN MAP

### IRRIGATION PLANS:

IR1-IR4	IRRIGATION PLANS & DETAILS
---------	----------------------------

### ELECTRICAL ENGINEERING PLANS:

E0.1	ELECTRICAL COVER SHEET
ES1.1	SITE PLAN & DETAILS
EP1.0	SITE PHOTOMETRIC PLAN

### STRUCTURAL ENGINEERING PLANS:

S1.0	GENERAL STRUCTURAL NOTES
S2.0	SHADE STRUCTURE FOUNDATION PLANS
S3.0	SHADE STRUCTURE ROOF FRAMING PLANS
S4.0	SHADE STRUCTURE STRUCTURAL SECTIONS & DETAILS



## PREPARED FOR

TOWN OF PARKER  
PARKS AND RECREATION DEPARTMENT  
CONTACT:  
BRETT COLLINS, PLA  
PARK PROJECT MANAGER  
20120 E. MAINSTREET  
PARKER, CO. 80134  
303.805.3276

## PROJECT TEAM

### LANDSCAPE ARCHITECT

DHM DESIGN CORPORATION  
900 SOUTH BROADWAY, SUITE 300  
DENVER, CO 80209  
PHONE: 303-892-5566  
CONTACT: MATTHEW WHIPPLE

### CIVIL ENGINEER

WESTWOOD ENGINEERING  
10333 E. DRY CREEK RD., SUITE 240  
ENGLEWOOD, CO 80112  
PHONE: 720-482-9526  
CONTACT: JIM JANNICKE

### ELECTRICAL ENGINEER

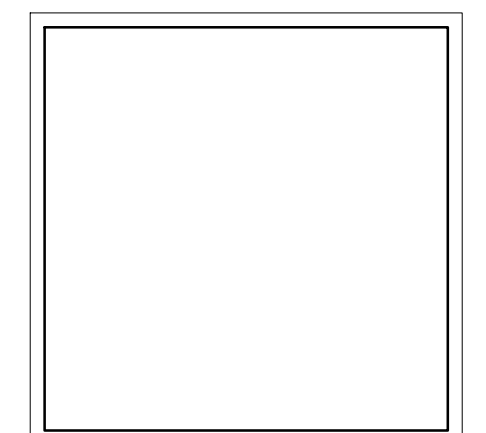
JCAA ENGINEERING  
4100 WADSWORTH BLVD.  
WHEAT RIDGE, CO 80033  
PHONE: 303-985-3260  
CONTACT: FRANK DAVENPORT

### IRRIGATION DESIGNER

HYDROSYSTEMS KDI  
13949 WEST COLFAX AVE., ST 260  
LAKEWOOD, CO. 80401  
PHONE: 303-980-5327  
CONTACT: JILL BERSANO

### STRUCTURAL ENGINEER

SAN ENGINEERING, L.L.C.  
1150 W. LITTLETON BLVD, SUITE 200  
LITTLETON, CO 80120  
PHONE: 303-953-9014  
CONTACT: JOHN MIGLIACCIO



**DHM DESIGN**

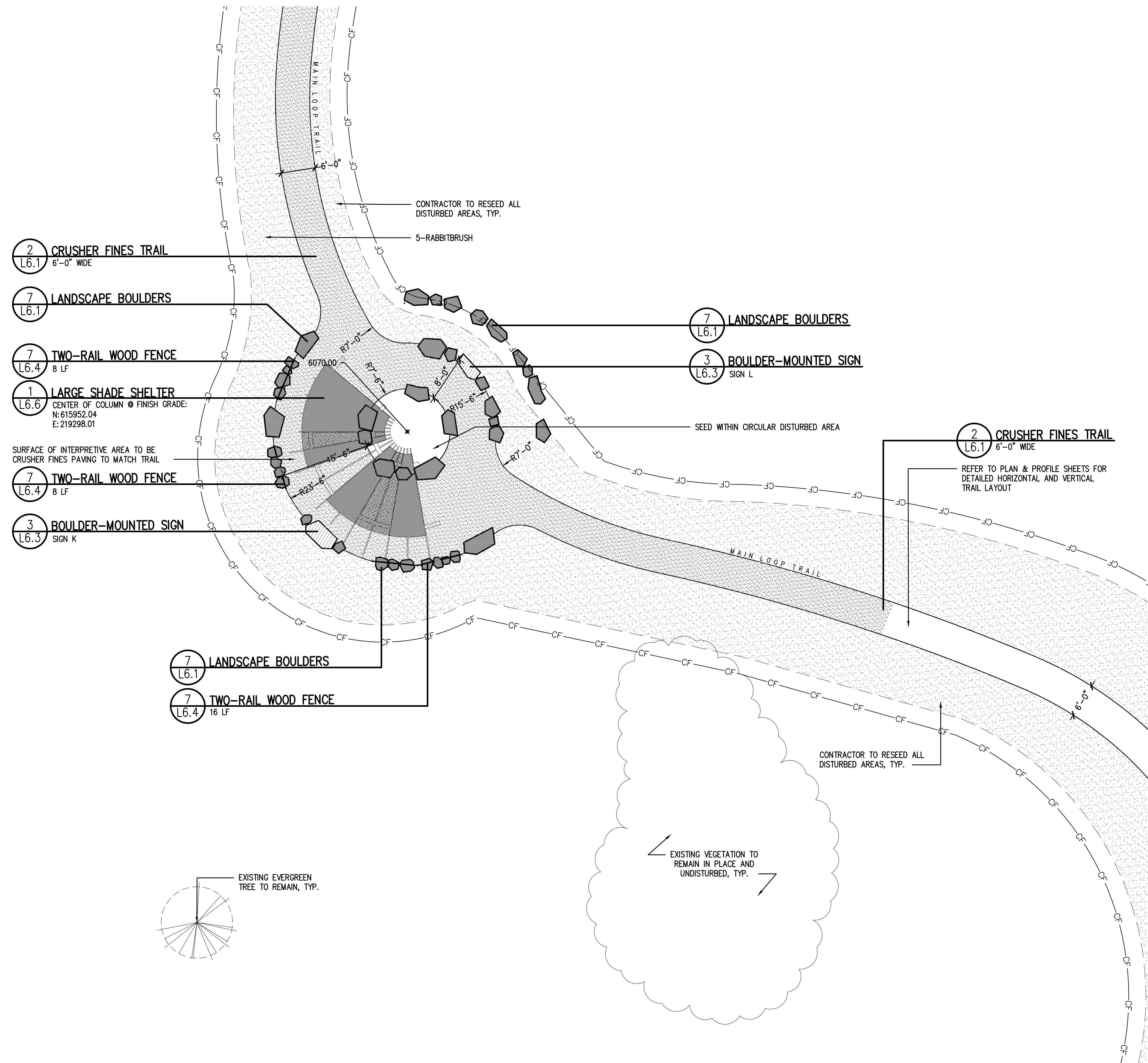
900 S. Broadway  
Suite 300  
Denver, CO 80209  
303.892.5566  
www.dhmdesign.com

DATE: 07.19.2022



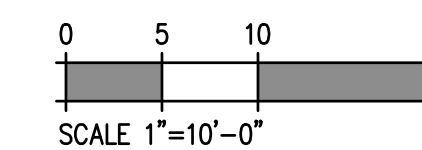






**1 FARMSTEAD INTERPRETIVE AREA ENLARGEMENT**

SCALE: 1"=10'-0"



**HARVIE OPEN SPACE PARK**  
SITE PLAN SUBMITTAL

20120 East Main Street, Parker, CO 80138

PROJECT NUMBER: 17279.00 DATE: 07.19.2022

DESIGNED: MTW  
DRAWN: MTW  
CHECKED: MTW

REVISIONS:

JOB DESCRIPTION:  
SITE PLAN SUBMITTAL

SHEET TITLE:  
ENLARGEMENT PLANS

SCALE: 1"=10'-0"  
SHEET NUMBER:

**L3.0**

