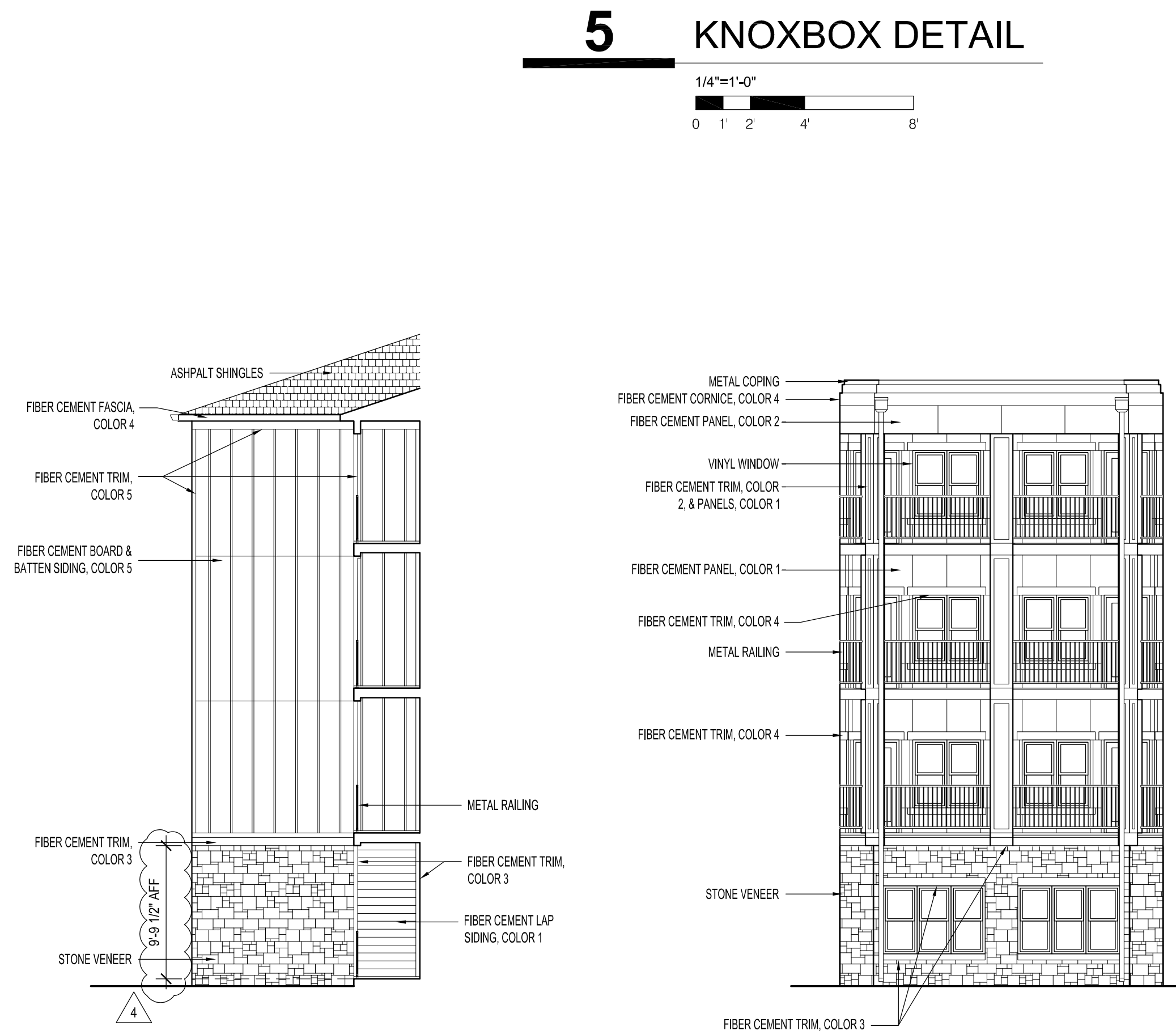
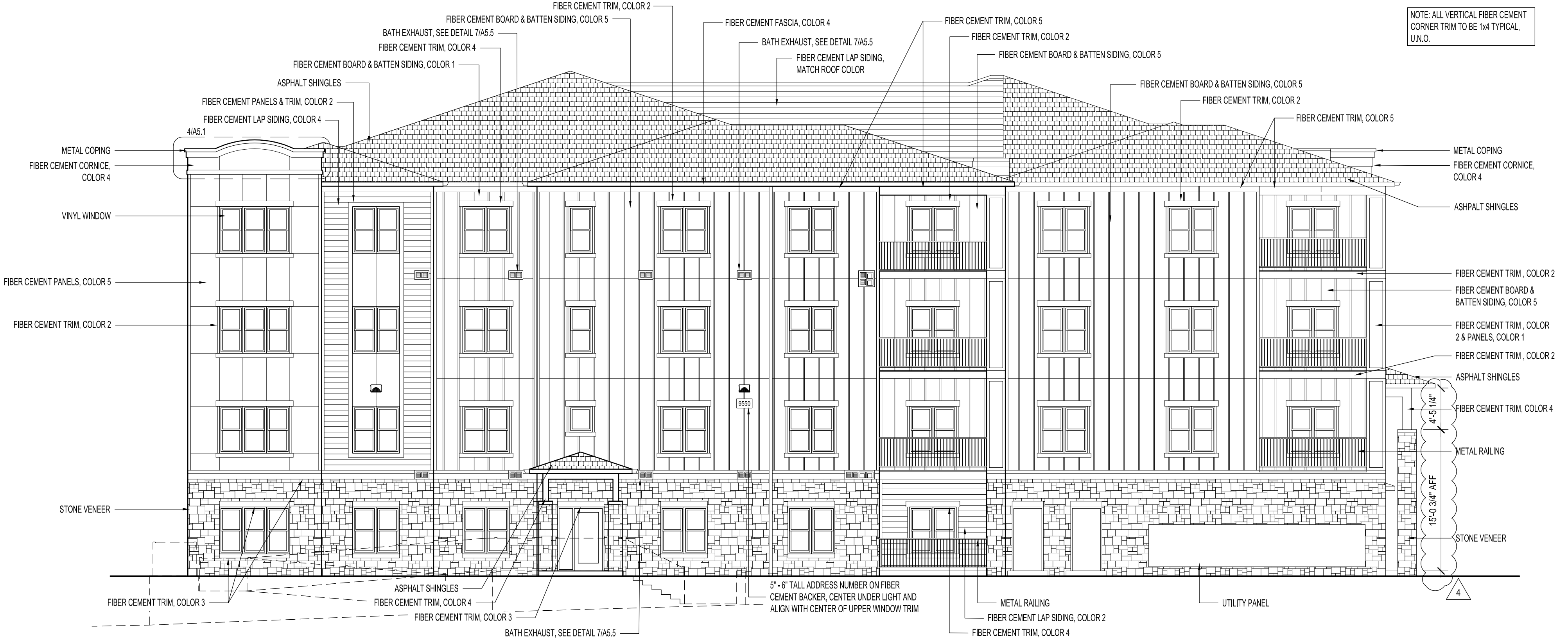
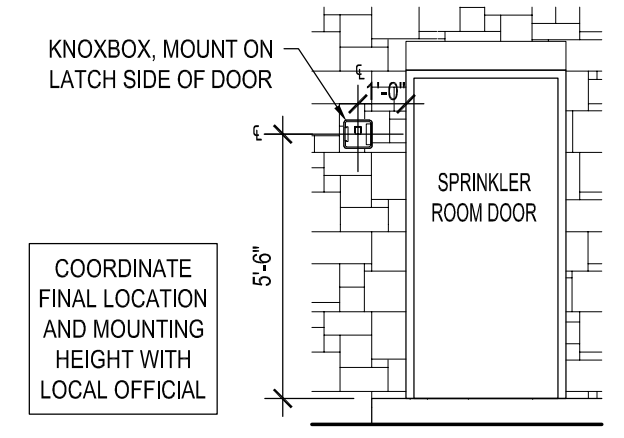
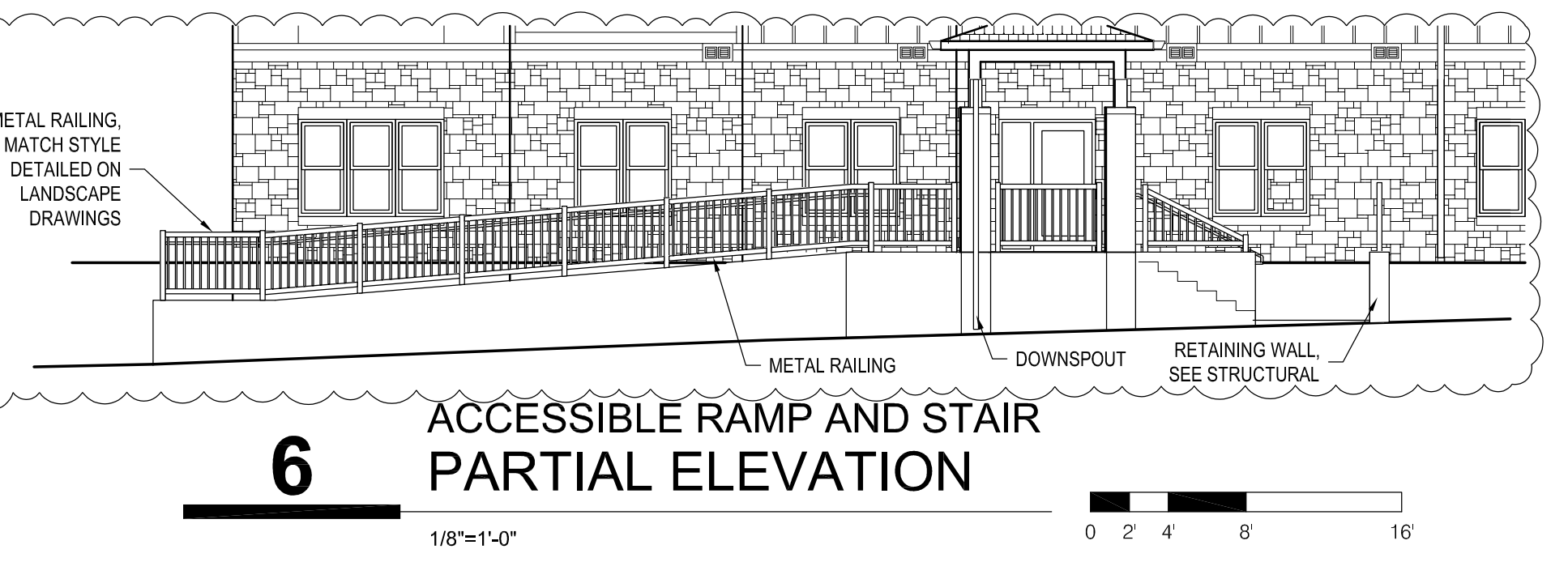
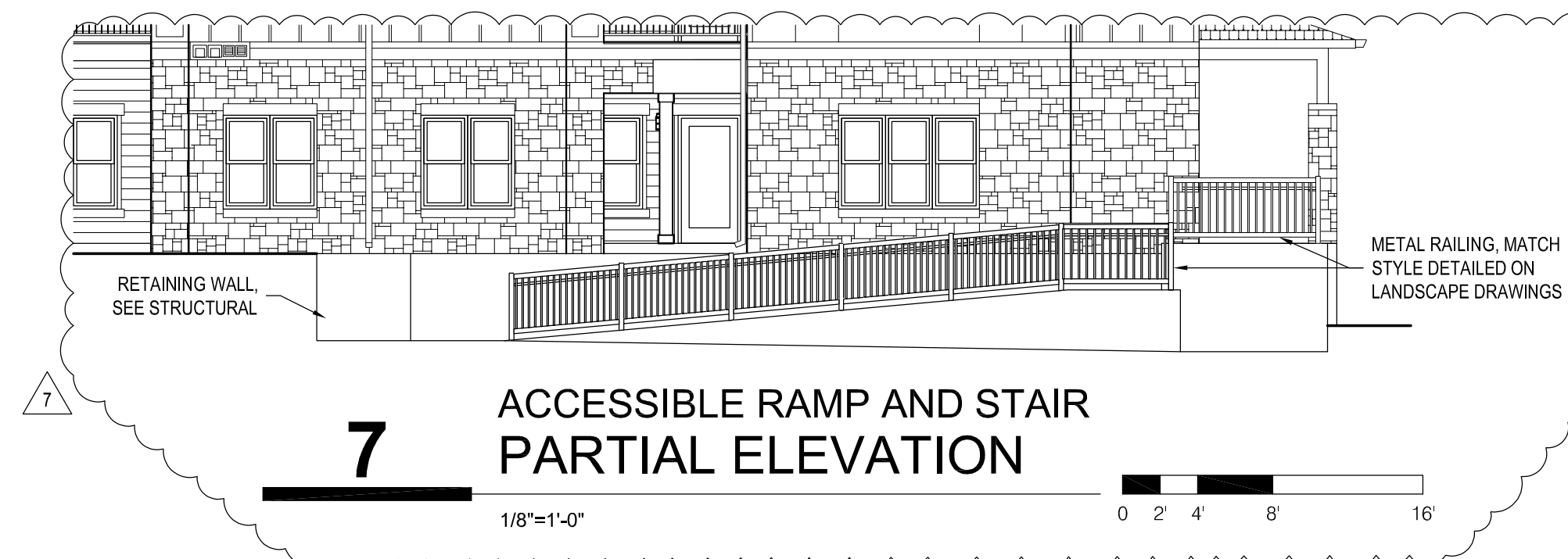


EXTERIOR FINISH SCHEDULE			
MATERIAL	MANUFACTURER	COLOR	FINISH DESCRIPTION
ASPHALT SHINGLES	CERTANTEED LANDMARK TL	COUNTRY GRAY	.
MORTAR	-	NATURAL / GRAY	USE IN STONE VENEER
MANUFACTURED STONE VENEER	CENTURION STONE	CENTURION CASTLE ROCK, GRAY	.
BOLLARDS	-	BLACK	.
METAL GUARD RAILS	-	BLACK	.
BALCONY JOISTS	PT LUMBER	STAIN	.
BALCONY DECKING	COMPOSITE	MATCH DOVETAIL @ 2ND FLOOR, DORIAN GRAY @ 3RD FLOOR	.
EPDM ROOFING MEMBRANE	-	WHITE	.
FIBER CEMENT SOFFIT	-	MATCH ADJACENT REAR WALL COLOR	.
FIBER CEMENT LAP SIDING	-	.	7" EXPOSURE
FIBER CEMENT TRIM, PANELS, LAP SIDING, BOARD & BATTEN SIDING 1	-	MATCH SW 7019 DRIFT OF MIST	.
FIBER CEMENT TRIM & PANELS 2	-	MATCH SW 7017 DORIAN GRAY	.
FIBER CEMENT TRIM & PANELS 3	-	MATCH SW 7018 DOVETAIL	.
FIBER CEMENT TRIM, PANELS, BOARD & BATTEN SIDING 4	-	MATCH SW 7019 GAUNTLETT GRAY	.
FIBER CEMENT TRIM, PANELS, LAP SIDING 5	-	MATCH SW 7615 SEA SERPENT	.
FIBER CEMENT LAP SIDING 6	-	MATCH SHINGLES	.
MISCELLANEOUS FLASHING	-	MATCH ADJACENT SURFACE AS APPROVED BY ARCHITECT	.
METAL COPING	-	MATCH ADJACENT SURFACE, U.O.L., AS APPROVED BY ARCHITECT	.
SEALANTS	-	MATCH ADJACENT SURFACE	.
METAL DOOR FRAMES	-	MATCH DOOR COLOR	.
ENTRANCE, PATIO & BALCONY DOORS	-	BLACK	.
UTILITY DOORS	-	MATCH "DOVETAIL"	.
VINYL WINDOWS	-	BLACK	.
GLASS	-	CLEAR	.
ALUMINUM STOREFRONT	-	BLACK	PRE-FINISHED
METAL GUTTERS & DOWNSPOUTS	-	MATCH ADJACENT SURFACE	.
METAL AWNING	-	BLACK	PRE-FINISHED

EXTERIOR FINISH NOTES:
A. PROVIDE SEALANT BETWEEN DISSIMILAR MATERIALS. WHERE A SPECIFIC DETAIL FOR A CONDITION IS INDICATED, FOLLOW THE INSTRUCTION OF THE SPECIFIC DETAIL IN LIEU OF GENERIC REQUIREMENTS.



SEBREE Architects, Inc.
97 Dover Street, Suite 400, Avon, Indiana 46123-7356
Phone (317) 272-7800 FAX (317) 272-7808
Web Site: <http://www.sebreearchitects.com>

THE GARRETT COMPANIES

**PARKER + PINE APTS
BUILDING TYPE III**
9550 TWENTY MILE ROAD
PARKER, COLORADO

07.09.21
COLORADO LICENSED ARCHITECT
ARC.004005812
CERTIFIED BY

NO.	DATE	BY	DESCRIPTION
10.14.21	4		ISSUED FOR CONSTRUCTION SET
06.15.22	7		REVISION 4: RFI #17
08.03.22			REVISION 7

DATE: 10.14.21
PROJECT NO.: 20013
EXTERIOR ELEVATIONS
BUILDING TYPE III
A2.2