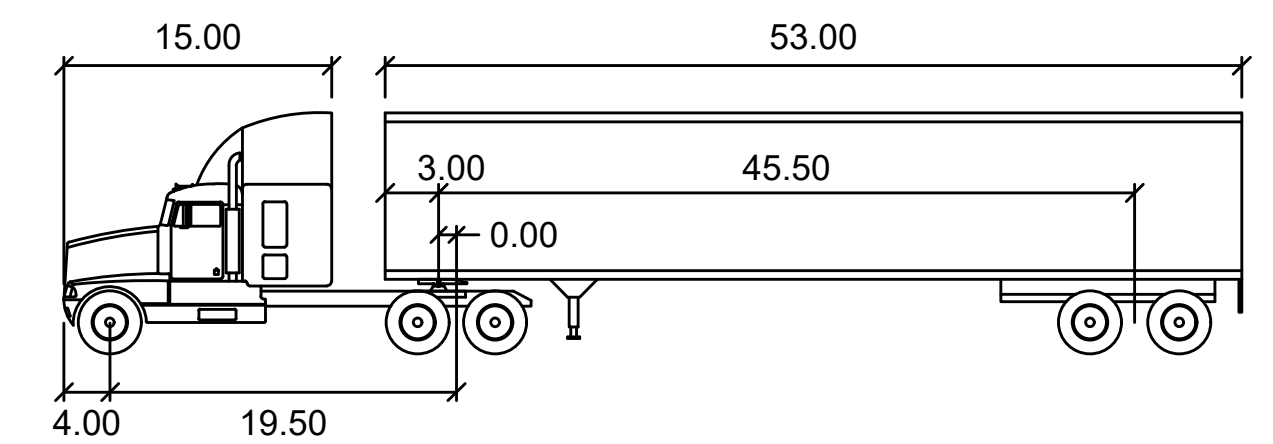
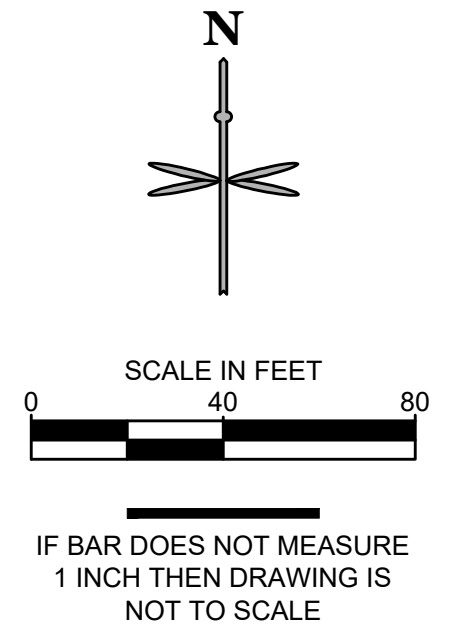
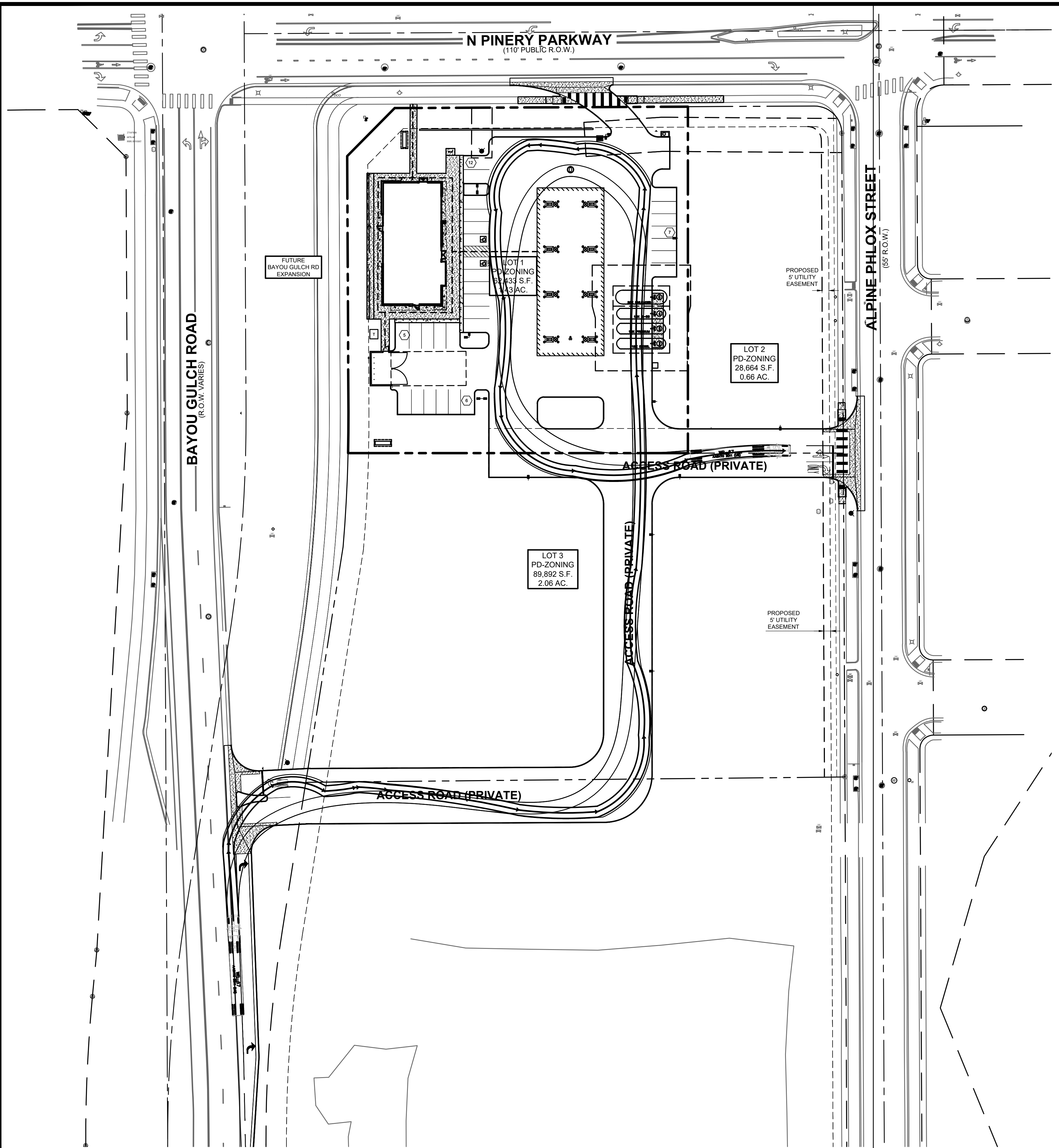


P:\KUM & GO\CO. PARKER_2293 - PINERY AND BAYOU GULCH\B CAD\EXHIBITS\EX.4 - TRUCK ROUTES.DWG



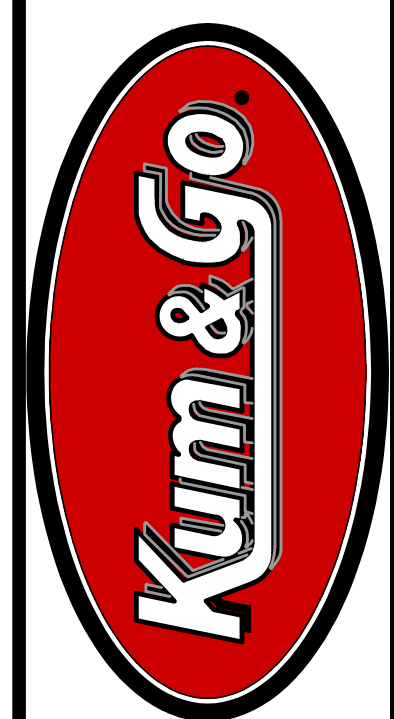
WB-67

	feet		
Tractor Width	: 8.00	Lock to Lock Time	: 6.0
Trailer Width	: 8.50	Steering Angle	: 28.4
Tractor Track	: 8.00	Articulating Angle	: 75.0
Trailer Track	: 8.50		

811 Know what's below. Call before you dig.
CALL 811 SEVENTY-TWO HOURS PRIOR TO DIGGING, GRADING OR EXCAVATING FOR THE MARKING OF UNDERGROUND MEMBER UTILITIES.

EES
ENTITLEMENT AND
ENGINEERING
SOLUTIONS, INC.
3801 E. Florida Avenue, Suite 425
Denver, CO 80210
303-572-7897 www.ees.us.com

PRELIMINARY
NOT FOR
CONSTRUCTION



1459 Grand Ave
Des Moines, IA 50309
P: 888-458-6646

2293 - PARKER, COLORADO
BAYOU GULCH RD AND PINERY PKWY
DELIVERY TRUCK ROUTE

KG PROJECT TEAM: EES
RDM: RF
SDM: DG
CPM: BS

DATE	REVISION DESCRIPTION

DATE: 07-12-2023

SHEET NUMBER:
EX.2
2 OF 43