

WEST ELEVATION
TRANSPARENCY REQUIRED = 11'-0" X 82'-7" = 908 SF X 40% = 363 SF
TOTAL TRANSPARENCY PROVIDED = 173 SF = 19%
ARCHITECTURAL ENHANCED FEATURE - MURAL = 18'-0" X 13'-8" = 245 SF
TOTAL ENHANCEMENT = 418 SF = 46%

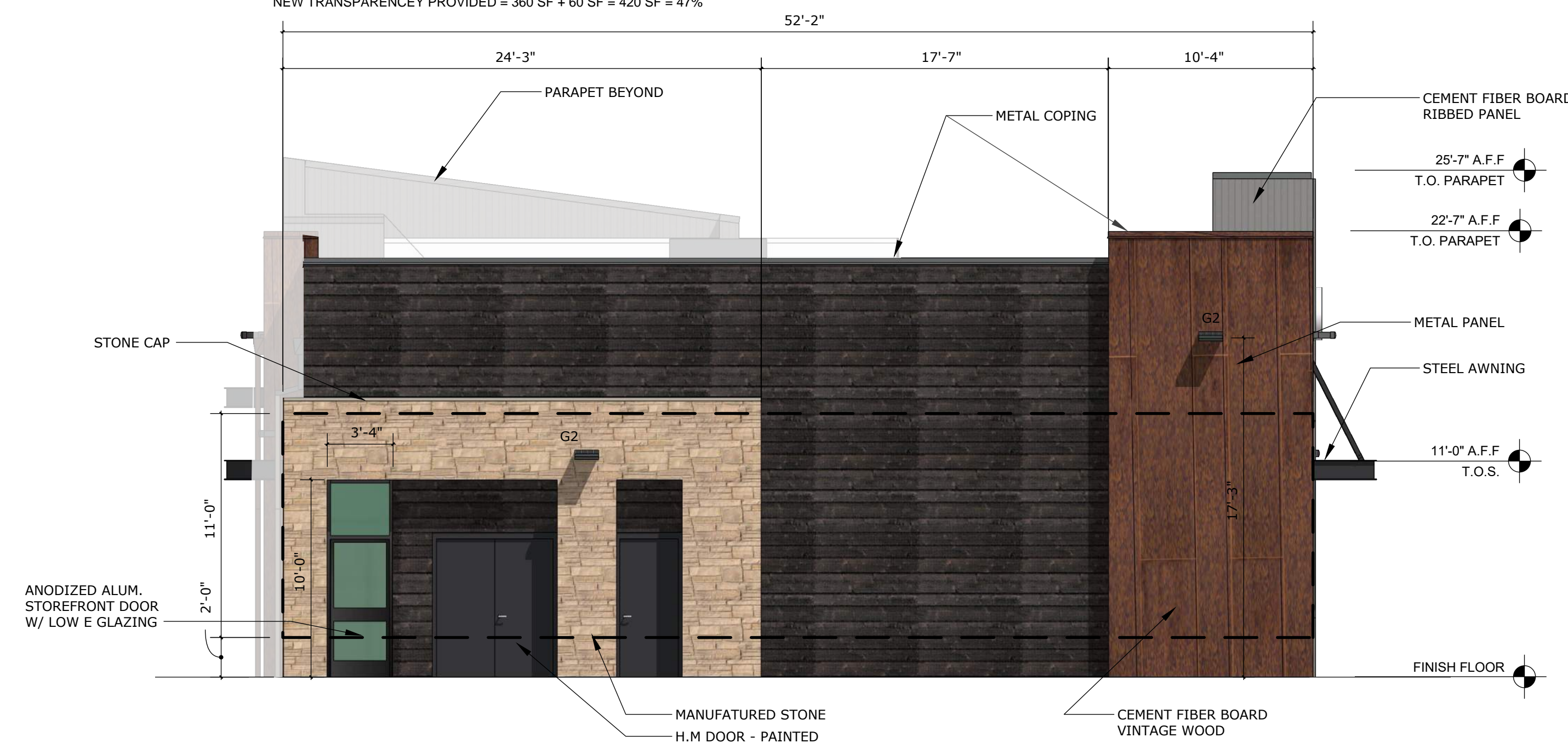
WEST ELEVATION



EAST ELEVATION
TRANSPARENCY REQUIRED = 11'-0" X 81'-8" = 894 SF X 40% = 357 SF
TOTAL TRANSPARENCY PROVIDED = 360 SF = 40%
NEW TRANSPARENCY PROVIDED = 360 SF + 60 SF = 420 SF = 47%

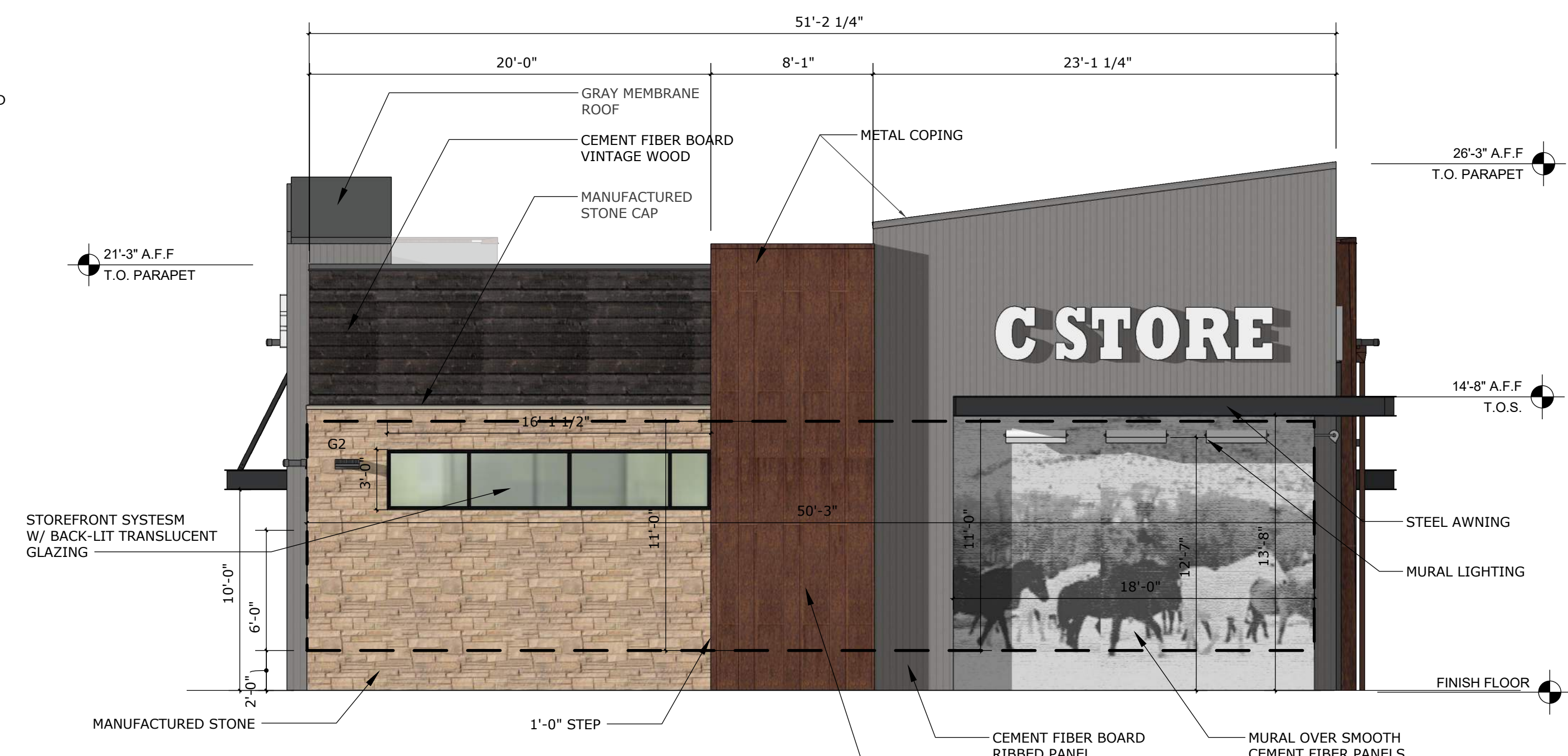
EAST ELEVATION

GENERAL NOTES:
SIGNAGE IS A PLACE HOLDER AND WILL BE OBTAINED UNDER A SEPARATE PERMIT.



SOUTH ELEVATION

SOUTH ELEVATION
TRANSPARENCY REQUIRED = 11'-0" X 52'-2" = 573 SF X 25% = 143 SF
TOTAL TRANSPARENCY PROVIDED = 33 SF = 5%



NORTH ELEVATION

NORTH ELEVATION
TRANSPARENCY REQUIRED = 11'-0" X 50'-3" = 552 SF X 40% = 220 SF
TRANSPARENCY PROVIDED = 48 SF = 8%
ARCHITECTURAL ENHANCED FEATURE - MURAL = 18'-0" X 13'-8" = 245 SF
TOTAL ENHANCEMENT = 293 SF = 53%