

ELEVATION GENERAL NOTES:

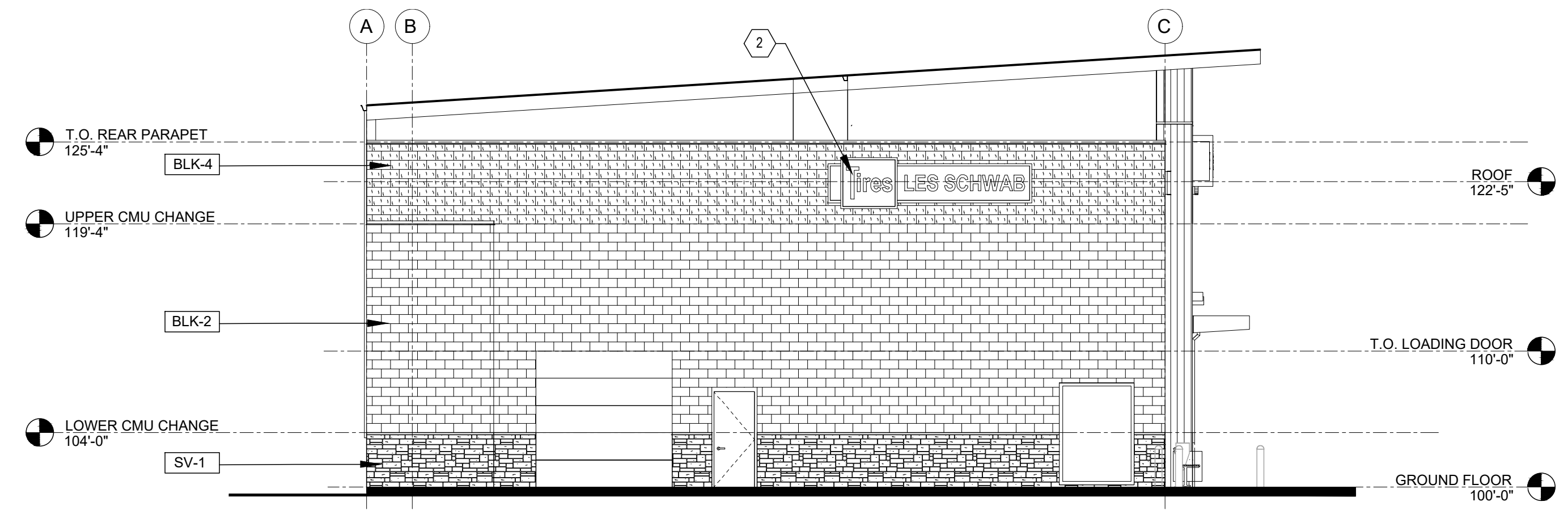
- A. ANY SIGNAGE DEPICTED ON ELEVATIONS IS TO BE PERMITTED SEPARATELY, BY OWNER.
- B. ALL VERTICAL DIMENSIONS SHOWN ARE FROM FINISH FLOOR.
- C. REF CIVIL AND STRUCTURAL DRAWINGS FOR GRADE CHANGES AND RETAINING WALL DIMENSIONS AND LOCATIONS.
- D. CONNECT ALL ROOF DRAINS AND DOWNSPOUTS TO SUBGRADE DRAINAGE SYSTEM. REF CIVIL DRAWINGS
- E. COORDINATE WITH SIGNAGE PLANS REQUIRED STRUCTURAL BACKING IN METAL PANEL SYSTEM AND REQUIRED ELECTRICAL ROUGH-IN LOCATIONS
- F. PROVIDE BACKING AT LOCATIONS WHERE EXTERIOR LIGHTS ARE SHOWN ON METAL PANEL SYSTEM. COORDINATE WITH LIGHT MANUFACTURERS SPECIFICATIONS AND REQUIREMENTS.
- G. EXPOSED STEM CONCRETE WALLS IN LANDSCAPED AREAS ARE TO HAVE MULCH OR GROUND COVER AGAINST EXPOSED CONCRETE TO HIDE FOOTING
- H. REFER TO SHEET E501 LIGHTING FIXTURE SCHEDULE FOR EXTERIOR LIGHT FIXTURE MOUNTING HEIGHTS
- I. VERIFY LOCAL FIRE DEPARTMENT REQUIREMENTS FOR ADDRESS NUMBER LOCATION
- J. WSEC WWR: 820 SF NET TRANSPARENT WINDOW AREA / 8,547 SF NET WALL AREA = 1.014 SF OPAQUE OPENINGS = 8.5%

ELEVATION KEY NOTES:

- 1. MASONRY CONTROL JOINT @ 30'-0" O.C. MAX., REF 5/A503
- 2. SIGNAGE BY CARLSON SIGN, REF 5/A506 FOR ATTACHMENT DETAIL
- 3. ADDRESS NUMBER LOCATION, COORD W/ AHJ

MATERIAL LEGEND:

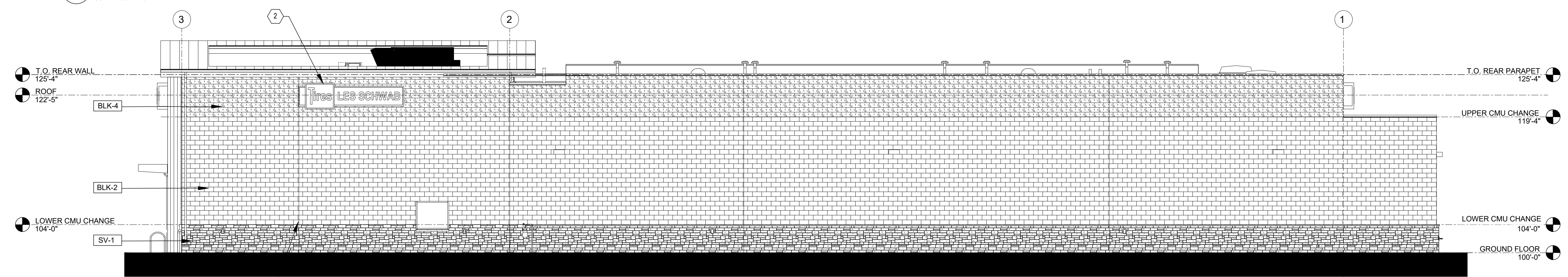
BLK-1	BASALITE CMU - SPLIT FACE (#807WR)
BLK-2	BASALITE CMU - GROUND FACE (#720 WR)
BLK-3	BASALITE CMU - SMOOTH FACE (#701 wr)
BLK-4	BASALITE CMU - SPLIT FACE (#869 WR)
SF-1	SITE FURNISHINGS IN DARK BRONZE, TRASH RECEPTACLE AND BENCH
SP-1	SOFFIT PANEL PAC-CLAD FLUSH SOLID W/ PVDF WOOD GRAIN FINISH (COPPER)
EP-2	EXTERIOR PAINT SUPERPAINT EXTERIOR ACRYLIC LATEX SATIN A89W01151 (MATCH KAWNEER #40 DARK BRONZE), REF SPEC
SV-1	CULTURED STONE VENEER - (BLACK RUNDLE)
WD-1	HARDI-BOARD VERTICAL BOARD PAINTED DARK BRONZE



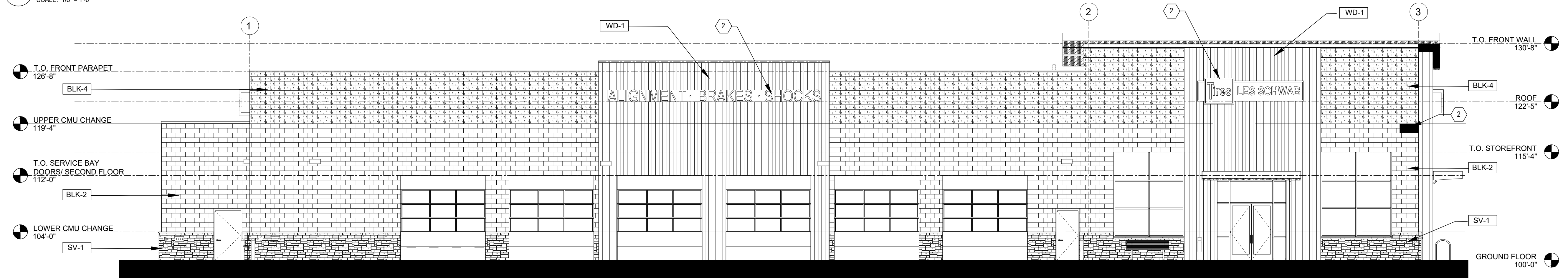
4 LOADING ELEVATION  
SCALE: 1/8" = 1'-0"



3 SHOWROOM ELEVATION  
SCALE: 1/8" = 1'-0"

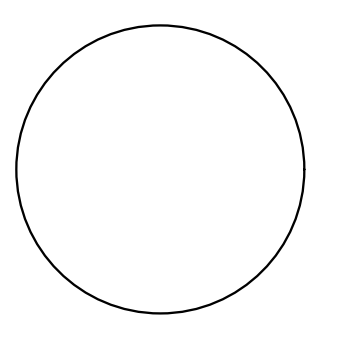


2 REAR ELEVATION  
SCALE: 1/8" = 1'-0"



1 FRONT ELEVATION  
SCALE: 1/8" = 1'-0"

CHAMBERS & HESS RD., PARKER, CO  
 6 BAY LH LINEAR STORE  
**LES SCHWAB TIRE CENTER - PARKER, CO**



© 2023 | ALL RIGHTS RESERVED

ENTITLEMENT PKG

07.05.2023  
 PROJECT# | LSCO\_21PARKER  
 DESIGNED BY | NELSON  
 DRAWN BY | PLATO  
 REVISIONS

EXTERIOR ELEVATIONS

**A201**

NOT FOR CONSTRUCTION - PRELIMINARY DESIGN