

09.08.2023

LES SCHWAB

6 BAY LES SCHWAB TIRE CENTER

Parker, Colorado



FOR VISUALIZATION PURPOSES ONLY

SHEET INDEX

- CVR COVER
- A1.1 FLOOR PLAN
- A2.1 ELEVATIONS
- A2.2 MATERIALS
- A3.1 PERSPECTIVES

PROJECT DESCRIPTION

6 BAY TIRE STORE 2022 PROTOTYPE

Owner

LES SCHWAB

Architect

CUSHING TERRELL
 13 NORTH 23RD STREET
 BILLINGS MT 59101
 406.248.7455

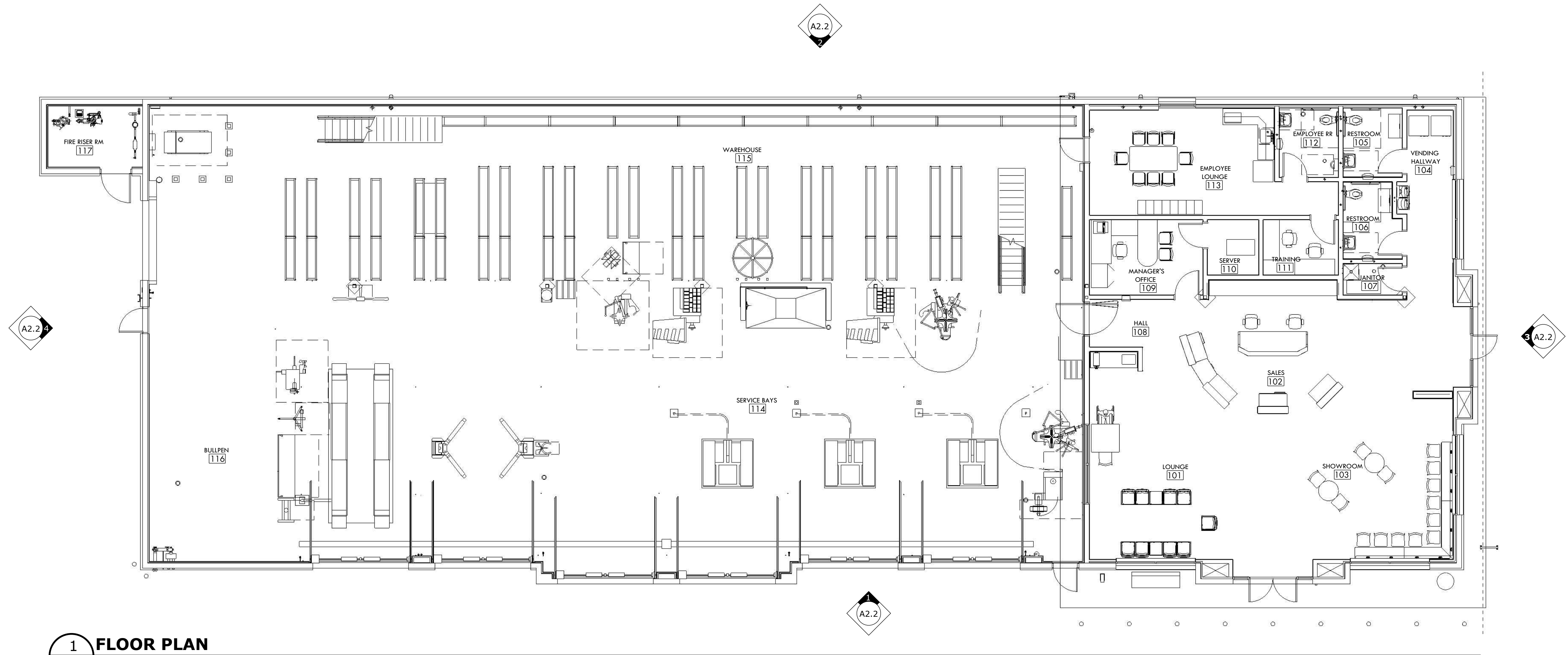
CONTRACTOR

TBD





12236 SLICEROO DR. PARKER, CO
6 BAY LH LINEAR STORE
LES SCHWAB TIRE CENTER - PARKER, CO



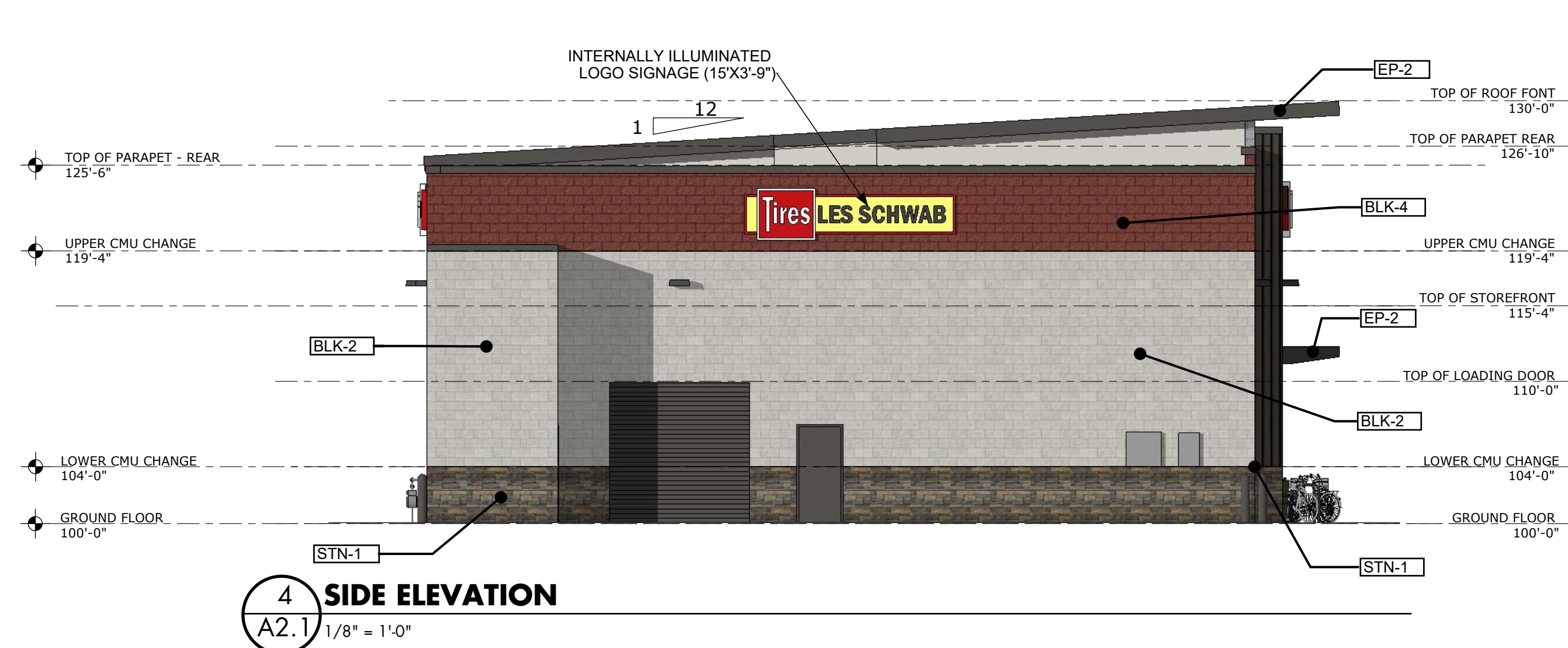
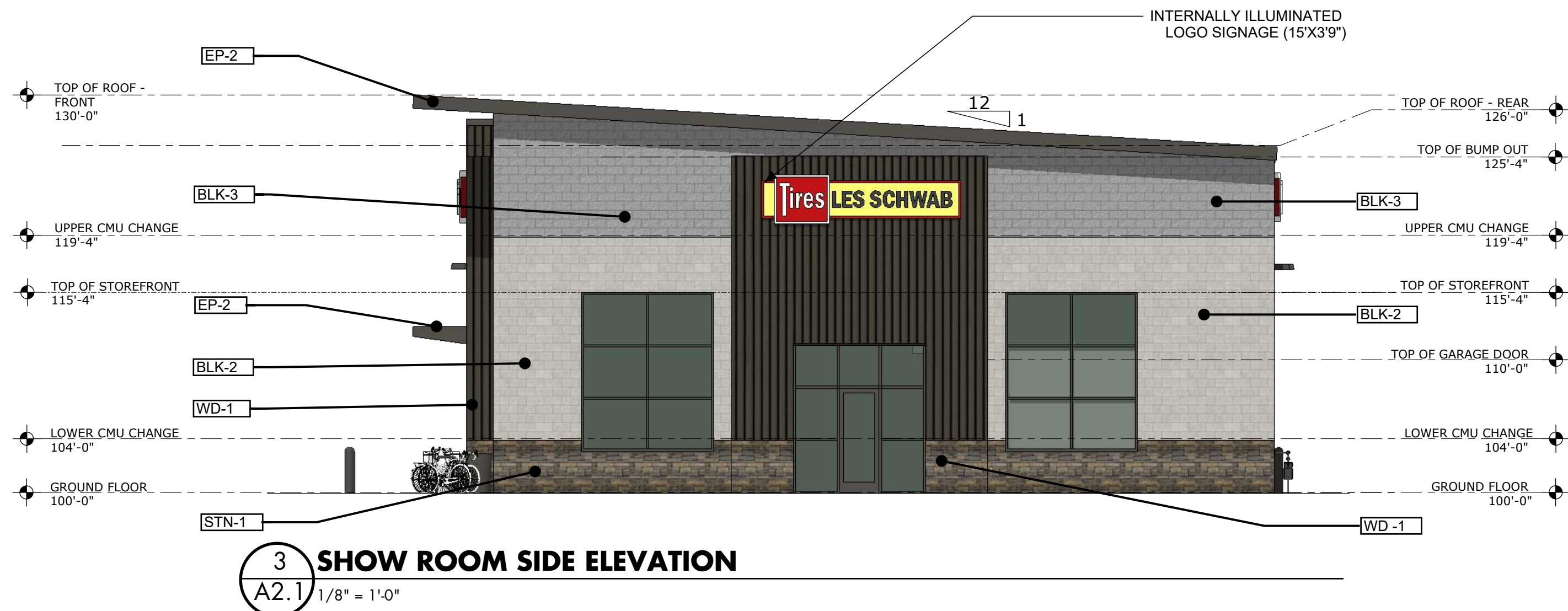
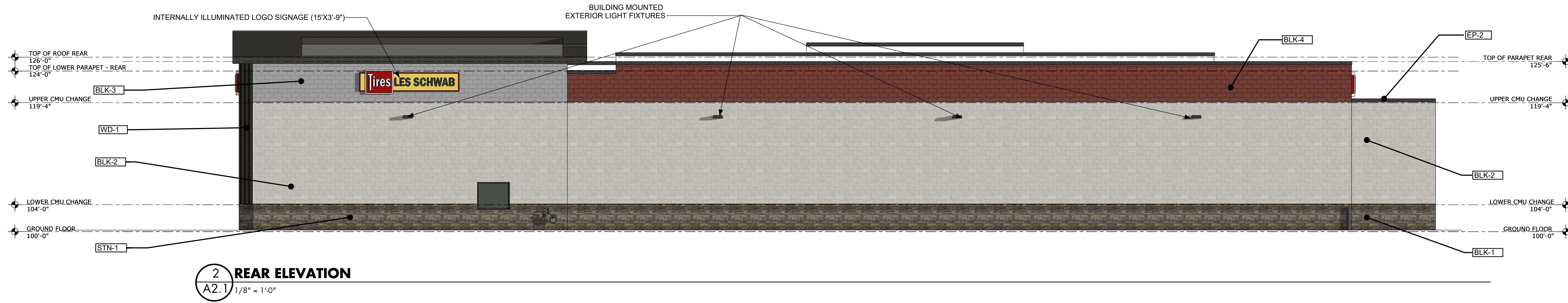
1 FLOOR PLAN
A1.1 1/8" = 1'-0"

ENTITLEMENT SET

NOT FOR CONSTRUCTION

DATE
09.08.2023

DRAWN BY - HENDRICKS



ELEVATION GENERAL NOTES

- A) ANY SIGNAGE DEPICTED ON ELEVATIONS IS TO BE PERMITTED SEPARATELY, BY OWNER.
- B) ALL VERTICAL DIMENSIONS SHOWN ARE FROM FINISH FLOOR.
- C) REF CIVIL AND STRUCTURAL DRAWINGS FOR GRADE CHANGES AND RETAINING WALL DIMENSIONS AND LOCATIONS.
- D) CONNECT ALL ROOF DRAINS AND DOWNSPOUTS TO SUBGRADE DRAINAGE SYSTEM. REF CIVIL DRAWINGS.
- E) COORDINATE WITH SIGNAGE PLANS REQUIRED STRUCTURAL BACKING IN METAL PANEL SYSTEM AND REQUIRED ELECTRICAL ROUGH-IN LOCATIONS.
- F) PROVIDE BACKING AT LOCATIONS WHERE EXTERIOR LIGHTS ARE SHOWN ON METAL PANEL SYSTEM.
- G) EXPOSED STEM CONCRETE WALL IN LANDSCAPED AREAS ARE TO HAVE MULCH OR GROUND COVER AGAINST EXPOSED CONCRETE TO HIDE FOOTING.
- H) REFER TO SHEET E501 LIGHTING FIXTURE SCHEDULE FOR EXTERIOR LIGHT FIXTURE MOUNTING HEIGHTS.
- I) VERIFY LOCAL FIRE DEPARTMENT REQUIREMENTS FOR ADDRESS NUMBER LOCATION.

MATERIAL LEGEND:

- BLK - 1** NOT USED
- BLK - 2** BASALITE CMU - GROUND FACE, (#720 WR)
- BLK - 3** BASALITE CMU - SPLIT FACE, (#701 WR)
- BLK - 4** BASALITE CMU - SPLIT FACE, (#869 WR)
- SP-1** SOFFIT PANEL PAC-CLAD FLUSH SOLID W/ PVDF WOOD GRAIN FINISH (COPPER)
- SF-1** SITE FURNISHINGS IN DARK BRONZE, TRASH RECEPTACLE AND BENCH
- EP-2** EXTERIOR PAINT SUPERPAINT EXTERIOR ACRYLIC LATEX SATIN A89W01151 (MATCH KAWNEER #40 DARK BRONZE), REF SPEC
- STN-1** CULTURED STONE VENEER - (BLACK RUNDLE)
- WD-1** CEMENTITIOUS VERTICAL SIDING - PAINTED DARK BRONZE

ENTITLEMENT SET
NOT FOR CONSTRUCTION

DATE
09.08.2023

DRAWN BY - HENDRICKS

COLOR EXTERIOR
ELEVATIONS

A2.1



1 PLANNING STN-1
N.T.S.



4 PLANNING BLK-4
N.T.S.



7 PLANNING EP-2
N.T.S.



2 PLANNING BLK-2
N.T.S.



5 PLANNING SP-1
N.T.S.



3 PLANNING BLK-3
N.T.S.



6 PLANNING WD-1
N.T.S.

MATERIAL LEGEND:

- BLK - 1** NOT USED
- BLK - 2** BASALITE CMU - GROUND FACE, (#720 WR)
- BLK - 3** BASALITE CMU - SPLIT FACE, (#701 WR)
- BLK - 4** BASALITE CMU - SPLIT FACE, (#869 WR)
- SP-1** SOFFIT PANEL PAC-CLAD FLUSH SOLID W/ PVDF WOOD GRAIN FINISH (COPPER)
- SF-1** SITE FURNISHINGS IN DARK BRONZE, TRASH RECEPTICLE AND BENCH
- EP-2** EXTERIOR PAINT SUPERPAINT EXTERIOR ACRYLIC LATEX SATIN A89W01151 (MATCH KAWNEER #40 DARK BRONZE), REF SPEC
- STN-1** CULTURED STONE VENEER - (BLACK RUNDLE)
- WD-1** CEMENTITIOUS VERTICAL SIDING - PAINTED DARK BRONZE

ENTITLEMENT SET
NOT FOR CONSTRUCTION

DATE
09.08.2023

DRAWN BY - HENDRICKS

MATERIAL BOARD

A2.2



1 CORNER PERSPECTIVE
A3.1 N.T.S.



2 SERVICE BAY BIRDS EYE
A3.1 N.T.S.



3 SHOW ROOM BIRDS EYE
A3.1 N.T.S.

12236 SLICEROO DR. PARKER, CO
6 BAY LH LINEAR STORE

LES SCHWAB TIRE CENTER - PARKER, CO

ENTITLEMENT SET

NOT FOR CONSTRUCTION

DATE
09.08.2023

DRAWN BY - HENDRICKS

PERSPECTIVES

A3.1