

1 GROUND FLOOR PLAN  
SCALE: 1/8" = 1'-0"

Cushing Terrell.

cushingterrell.com  
800.757.9522



12236 SLICEROO DR., PARKER, CO 80134  
6 BAY LH LINEAR STORE - PROTOTYPE Q4 2023  
**LES SCHWAB TIRE CENTER - PARKER, CO**

© 2023 | ALL RIGHTS RESERVED

ENTITLEMENT SET

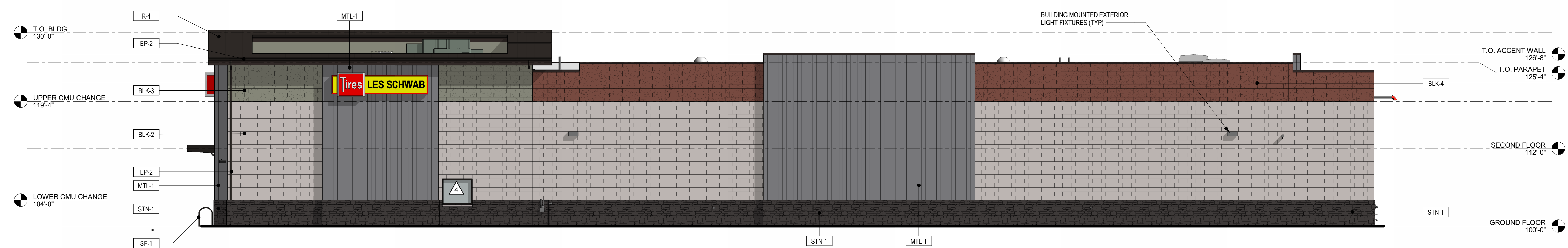
12.20.2023  
PROJECT# | LSCO\_21PARKER  
DRAWN BY | PLATO  
REVISIONS

FLOOR PLAN

A1.1



1 WEST ELEVATION - FRONT  
SCALE: 1/8" = 1'-0"



2 EAST ELEVATION - REAR  
SCALE: 1/8" = 1'-0"



3 SOUTH ELEVATION - SHOWROOM  
SCALE: 1/8" = 1'-0"



4 NORTH ELEVATION - SIDE  
SCALE: 1/8" = 1'-0"

ELEVATION GENERAL NOTES: MATERIAL LEGEND:

- A. ANY SIGNAGE DEPICTED ON ELEVATIONS IS TO BE PERMITTED SEPARATELY, BY OWNER.
- B. ALL VERTICAL DIMENSIONS SHOWN ARE FROM FINISH FLOOR.
- C. REF CIVIL AND STRUCTURAL DRAWINGS FOR GRADE CHANGES AND RETAINING WALL DIMENSIONS AND LOCATIONS.
- D. CONNECT ALL ROOF DRAINS AND DOWNSPOUTS TO SUBGRADE DRAINAGE SYSTEM, REF CIVIL DRAWINGS.
- E. COORDINATE WITH SIGNAGE PLANS REQUIRED STRUCTURAL BACKING IN METAL PANEL SYSTEM AND REQUIRED ELECTRICAL ROUGH-IN LOCATIONS.
- F. PROVIDE BACKING AT LOCATIONS WHERE EXTERIOR LIGHTS ARE SHOWN ON METAL PANEL SYSTEM, COORDINATE WITH LIGHT MANUFACTURERS' SPECIFICATIONS AND REQUIREMENTS.
- G. EXPOSED STEM CONCRETE WALLS IN LANDSCAPED AREAS ARE TO HAVE MULCH OR GROUND COVER AGAINST EXPOSED CONCRETE TO HIDE FOOTING.
- H. REFER TO SHEET E501 LIGHTING FIXTURE SCHEDULE FOR EXTERIOR LIGHT FIXTURE MOUNTING HEIGHTS.
- I. VERIFY LOCAL FIRE DEPARTMENT REQUIREMENTS FOR ADDRESS NUMBER LOCATION.
- J. ALL SIGNAGE WILL BE APPROVED WITH A SEPARATE PERMIT PROCESS.

BLK-1	NOT USED
BLK-2	BASALITE CMU GROUND FACE, (#720 WR)
BLK-3	BASALITE CMU SPLIT FACE, (#701 WR)
BLK-4	BASALITE CMU SPLIT FACE, (#869 WR)
SF-1	SITE FURNISHINGS IN DARK BRONZE, TRASH RECEPTACLE AND BENCH
SP-1	SOFFIT PANEL PAC-CLAD FLUSH SOLID W/ PVDF WOOD GRAIN FINISH (COPPER)
EP-2	EXTERIOR PAINT SUPERPAINT EXTERIOR ACRYLIC LATEX SATIN A89W01151 (MATCH KAWNEER #40 DARK BRONZE), REF SPEC
STN-1	CULTURED STONE VENEER - (BLACK RUNDLE)
MTL-1	PAC-CLAD METAL PANEL - (SLATE GRAY)

12236 SLICEROOD DR, PARKER, CO 80134  
6 BAY LH LINEAR STORE - PROTOTYPE Q4 2023  
**LES SCHWAB TIRE CENTER - PARKER, CO**

© 2023 | ALL RIGHTS RESERVED  
ENTITLEMENT SET

12.20.2023  
PROJECT# | LSCO\_21PARKER  
DRAWN BY | PLATO  
REVISIONS

COLOR EXTERIOR ELEVATIONS

A2.1