



EROSION CONTROL PLAN LEGEND

- FLOW ARROW
- LIMITS OF DISTURBANCE
- SILT FENCE
- CONSTRUCTION ENTRANCE
- INLET PROTECTION
- STABILIZED STAGING AREA
- CONCRETE WASHOUT

Provide Complete Legend of Hatching and Line Work

Add Parker's Legend of Keys/Symbols

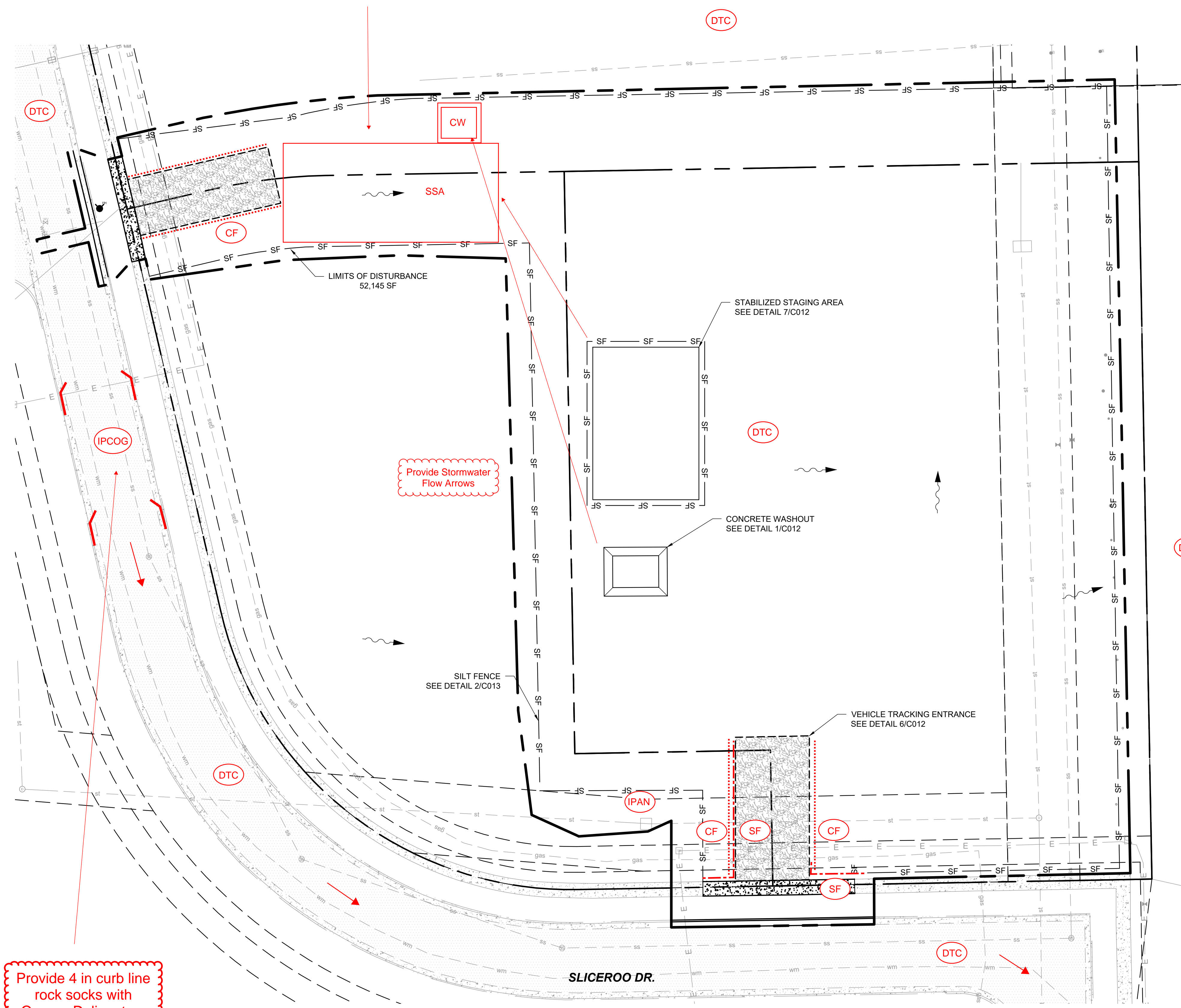
No Work Shall Occur in this Area

Add Requested Notes from Environmental Review

Please consider moving the SSA to the north, connecting it to the VTC along Slicero Drive. This reduces the potential for tracking on to Slicero Drive.

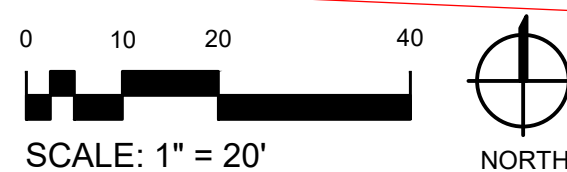
No Work Shall Occur in this Area

No Work Shall Occur in this Area



Provide 4 in curb line rock socks with Orange Delineators see IPCOG detail

1 INITIAL EROSION CONTROL PLAN  
C010



No Work Shall Occur in this Area

NOT FOR CONSTRUCTION - PRELIMINARY DESIGN

12236 SLICEROO DR, PARKER, CO  
6-BAY LINEAR STORE

LES SCHWAB TIRE CENTER - PARKER, CO

© 2023 | ALL RIGHTS RESERVED

CIVIL CDS

07.11.2023  
DRAWN BY | CAMPOS  
CHECKED BY | WALKER  
REVISIONS

EROSION SHEET INITIAL

C010



**EROSION CONTROL PLAN LEGEND**

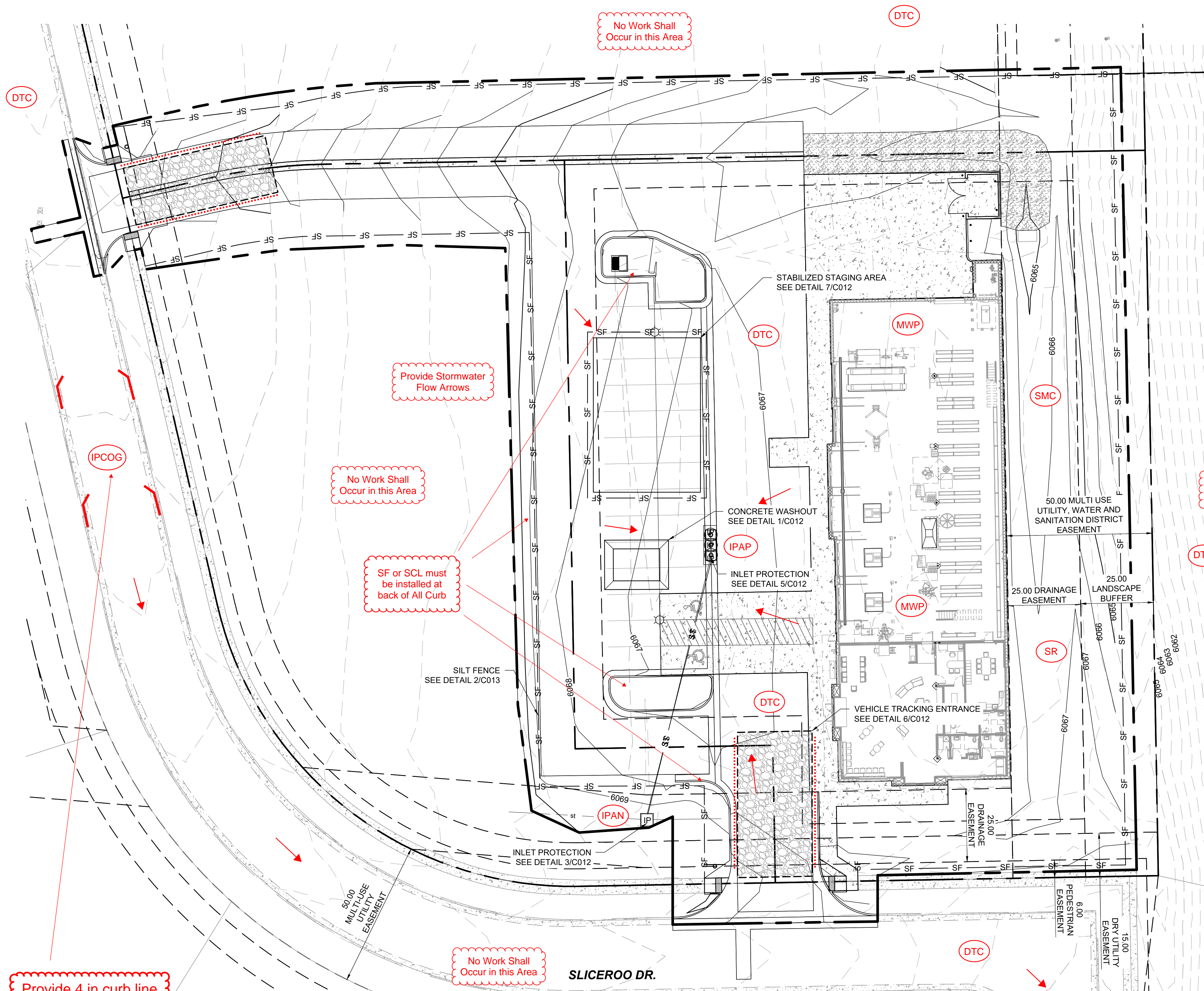
- FLOW ARROW
- LIMITS OF DISTURBANCE
- SILT FENCE
- CONSTRUCTION ENTRANCE
- INLET PROTECTION
- STABILIZED STAGING AREA
- CONCRETE WASHOUT

Provide Complete Legend of Hatching and Line Work

Add Parker's Legend of Keys/Symbols

Add Requested Notes from Environmental Review

Immediately Following the Final Erosion Control Plan Sheet provide Parker's Legend of CBMP Keys/Symbols, 4 pages of CBMP General Notes and the complete 64 pages of CBMP Details in alphabetical order.



Provide 4 in curb line rock socks with Orange Delineators see IPCOG detail

**1 C011 INTERIM/FINAL EROSION CONTROL PLAN**  
SCALE: 1" = 20'

NOT FOR CONSTRUCTION - PRELIMINARY DESIGN

12236 SLICEROO DR. PARKER, CO  
6-BAY LINEAR STORE

**LES SCHWAB TIRE CENTER - PARKER, CO**

© 2023 | ALL RIGHTS RESERVED

CIVIL CDS

07.11.2023  
DRAWN BY | CAMPOS  
CHECKED BY | WALKER  
REVISIONS

EROSION SHEET INTERIM/FINAL

**C011**