

PARKER POINTE SUBDIVISION FILING NO. 2 - LOT 1A

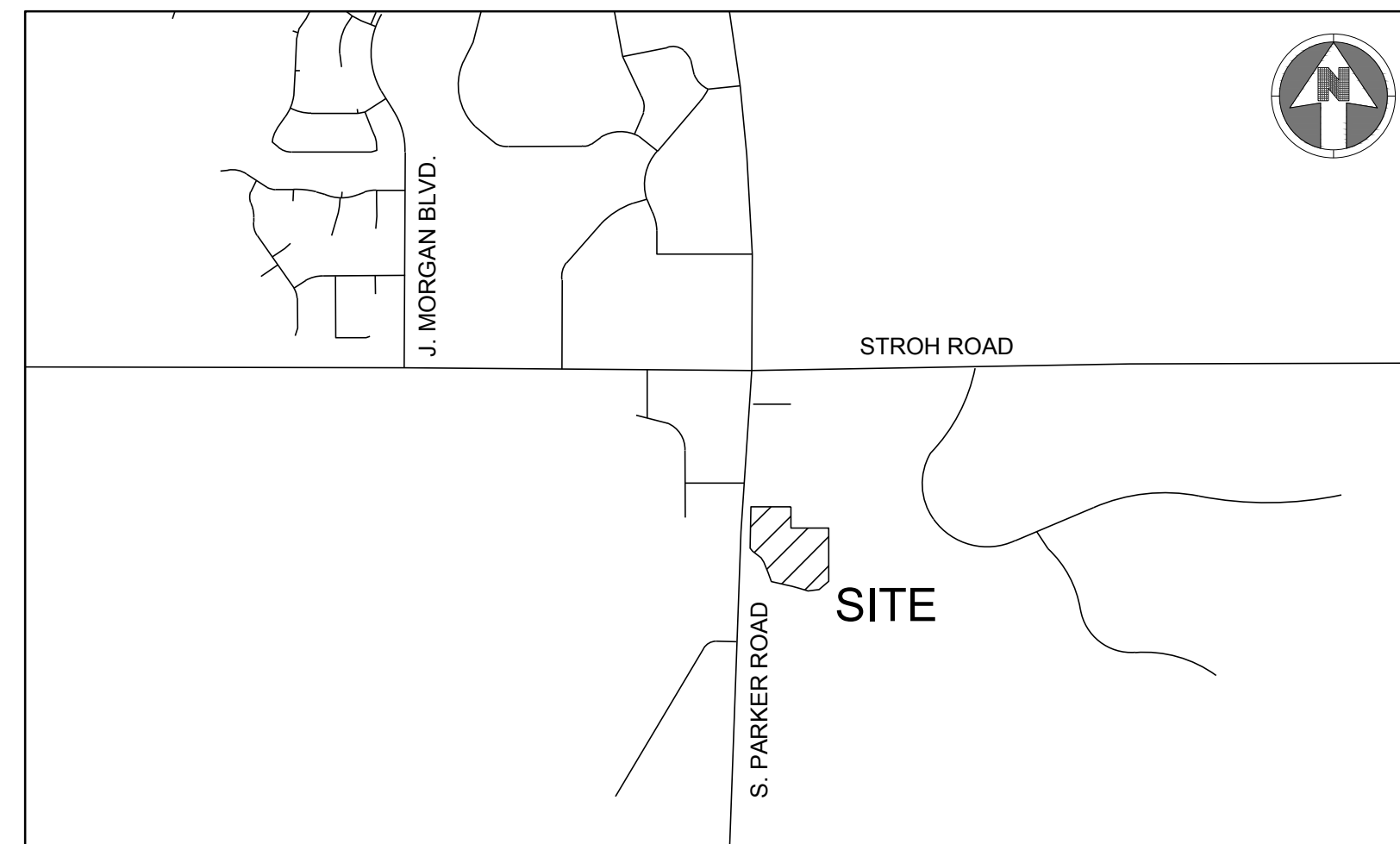
SITE DEVELOPMENT PLAN

A PARCEL OF LAND SITUATED IN THE NORTHEAST 1/4 OF SECTION 3, TOWNSHIP 7 SOUTH, RANGE 66 WEST OF THE 6TH PRINCIPAL MERIDIAN, COUNTY OF DOUGLAS, STATE OF COLORADO.

SITE STATISTICS			
ZONING	MC		
LOT AREA	SF	ACREA	%OF TOTAL
GROSS	177,770	4.08	100%
NET	177,770	4.08	100%
SITE DATA	SF	ACREA	%OF TOTAL
BUILDING AREA	15,611	0.36	8.78%
HARDSCAPE AREA	66,208	1.52	37.25%
LANDSCAPE AREA (REQ'D:15%)	95,951	2.20	53.97%
TOTAL	177,770	4.08	100%

PARKING	GFA (SF)	PARKING FORMULA	REQUIRED	PROVIDED
MEDICAL OFFICE BUILDING	29,745	1 /300 SF	100	127
ACCESSIBLE SPACES			10+3 VAN*	10+3 VAN
BICYCLE PARKING	29,745	2 PER 10,000 SF	3	8

SETBACK	
NORTH	25 LF
EAST	25 LF
SOUTH	25 LF
WEST	65 LF (MAX)



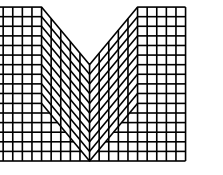
VICINITY MAP
SCALE:1"=1,000'

Sheet List Table	
Sheet Number	Sheet Title
01	COVER SHEET
02	EXISTING CONDITIONS PLAN
03	SITE PLAN
04	LANDSCAPE COVER SHEET
05	LANDSCAPE PLAN
06	LANDSCAPE PLAN
07	TREE CONSERVATION PLAN
08	SITE DETAILS
09	PLANTING DETAILS
10	ARCHITECTURAL SITE PLAN
11	EXTERIOR ELEVATIONS
12	ELECTRICAL SITE PLAN
13	LIGHTING PHOTOMETRICS PLAN
14	LIGHTING CUT SHEETS & LUMINAIRE SCHEDULE



BOULDER ASSOCIATES

1426 PEARL STREET, SUITE 300
BOULDER, COLORADO 80302
303.499.7795



S.A. MIRO INC.
CONSULTING ENGINEERS

4582 South Ulster Street
Suite 750, Denver, CO 80237
303-741-3737
www.samiro.com

CENTURA
PARKER NHC
PARKER POINTE SUBDIVISION
LOTS 7, 8, 9 AND 10
PARKER, CO 80134

SUBMITTALS
DESCRIPTION DATE
1ST SUBMITTAL 07/28/2023

CONTACTS:

OWNER'S REPRESENTATIVE
MEDDEVELOPMENT, LLC
JOHN ALMEIDA
10800 FARLEY, SUITE 380
OVERLAND PARK, KS 66210
816-564-2393

ENGINEER
S.A. MIRO INC.
JASON CARR
4582 SOUTH ULSTER STREET
SUITE 750 DENVER, CO 80237
303-741-3737

SURVEYOR
ENGINEERING SERVICE COMPANY
CHARLES BECKSTROM
14190 E. EVANS AVENUE
AURORA, CO 80014
303-337-1393

PUBLIC UTILITIES:

SOUTH METRO FIRE DISTRICT
9195 E. MINERAL AVENUE
CENTENNIAL, CO 80112
P: (720) 989-2244

PARKER WATER & SANITATION DISTRICT
18100 WOODMAN ROAD
PARKER, CO 80134
P: (303) 841-4627

TOWN OF PARKER
20120 E. MAIN STREET
PARKER, CO 80138
P: (303) 840-9546

BASIS OF BEARING:

BEARINGS ARE BASED ON THE NORTH LINE OF THE NE 1/4 SECTION 3, TOWNSHIP 7 SOUTH, RANGE 66 WEST, OF THE 6TH PRINCIPAL MERIDIAN BEARING S89°59'29"W AND BOUNDED BY THE MONUMENTS SHOWN HEREON.

BENCHMARK:

DOUGLAS COUNTY SURVEY CONTROL MONUMENT TT15A - 3" DIAMETER DOUGLAS COUNTY GIS ALUMINUM CAP AT THE NE CORNER OF STROH ROAD AND SOUTH PARKER ROAD (US HIGHWAY 83) ELEVATION: 5970.79 FEET (NAVD 1988 DATUM)

FIRE FLOW BLOCK

TOTAL FIRE FLOW REQUIRED FOR THIS SITE IS 1875 GPM MINIMUM @ 20 PSI RESIDUAL PRESSURE
THIS FLOW MUST BE PROVIDED FROM A MINIMUM OF 2 FIRE HYDRANTS
INDIVIDUALLY, EACH FIRE HYDRANT MUST SUPPLY 1500 GPM MINIMUM @ 20 PSI RESIDUAL PRESSURE

CODE USED FOR ANALYSIS: 2015 INTERNATIONAL FIRE CODE AND 2015 INTERNATIONAL BUILDING CODE

OCCUPANCY GROUPS:
B

CONSTRUCTION TYPE: 2B

FIRE FLOW CALCULATION AREA: 30,120 SF
TOTAL BUILDING AREA: 30,120 SF

BUILDING IS TO BE CONSTRUCTED WITH AUTOMATED FIRE SPRINKLER SYSTEM (NFPA 13) SO FIRE FLOW REQUIREMENT HAS BEEN REDUCED BY 50%.

DATE
07/28/2023

PARKER PROJECT NUMBER
SP22-XXX

SHEET TITLE
COVER SHEET

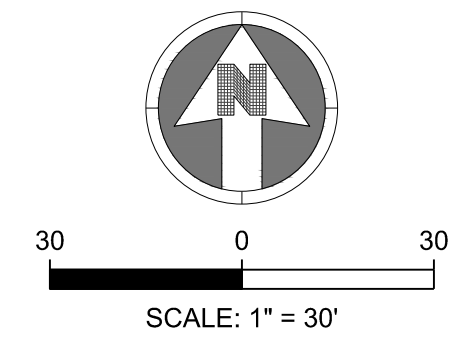
DRAWING NUMBER

01 OF 14

PARKER POINTE SUBDIVISION FILING NO. 2 - LOT 1A

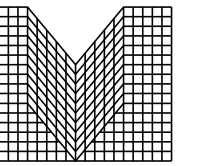
SITE DEVELOPMENT PLAN

A PARCEL OF LAND SITUATED IN THE NORTHEAST 1/4 OF SECTION 3, TOWNSHIP 7 SOUTH, RANGE 66 WEST OF THE 6TH PRINCIPAL MERIDIAN, COUNTY OF DOUGLAS, STATE OF COLORADO.



BOULDER ASSOCIATES

1426 PEARL STREET, SUITE 300
BOULDER, COLORADO 80302
303.499.7795



M I R O

S.A. MIRO INC.
CONSULTING ENGINEERS

4582 South Ulster Street
Suite 750, Denver, CO 80237
303-741-3737
www.samiro.com

CENTURA
PARKER NHC

PARKER POINTE SUBDIVISION
LOTS 7, 8, 9 AND 10
PARKER, CO 80134

SUBMITTALS

DESCRIPTION	DATE
1ST SUBMITTAL	07/28/2023

DATE
07/28/2023

PARKER PROJECT NUMBER
SP22-XXX

SHEET TITLE
EXISTING
CONDITIONS PLAN

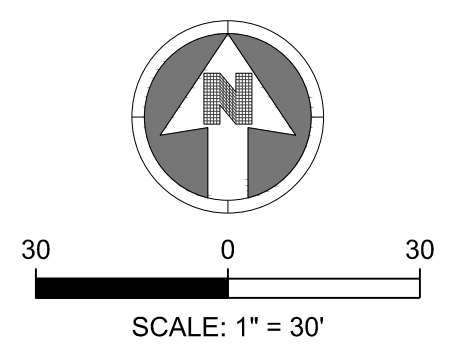
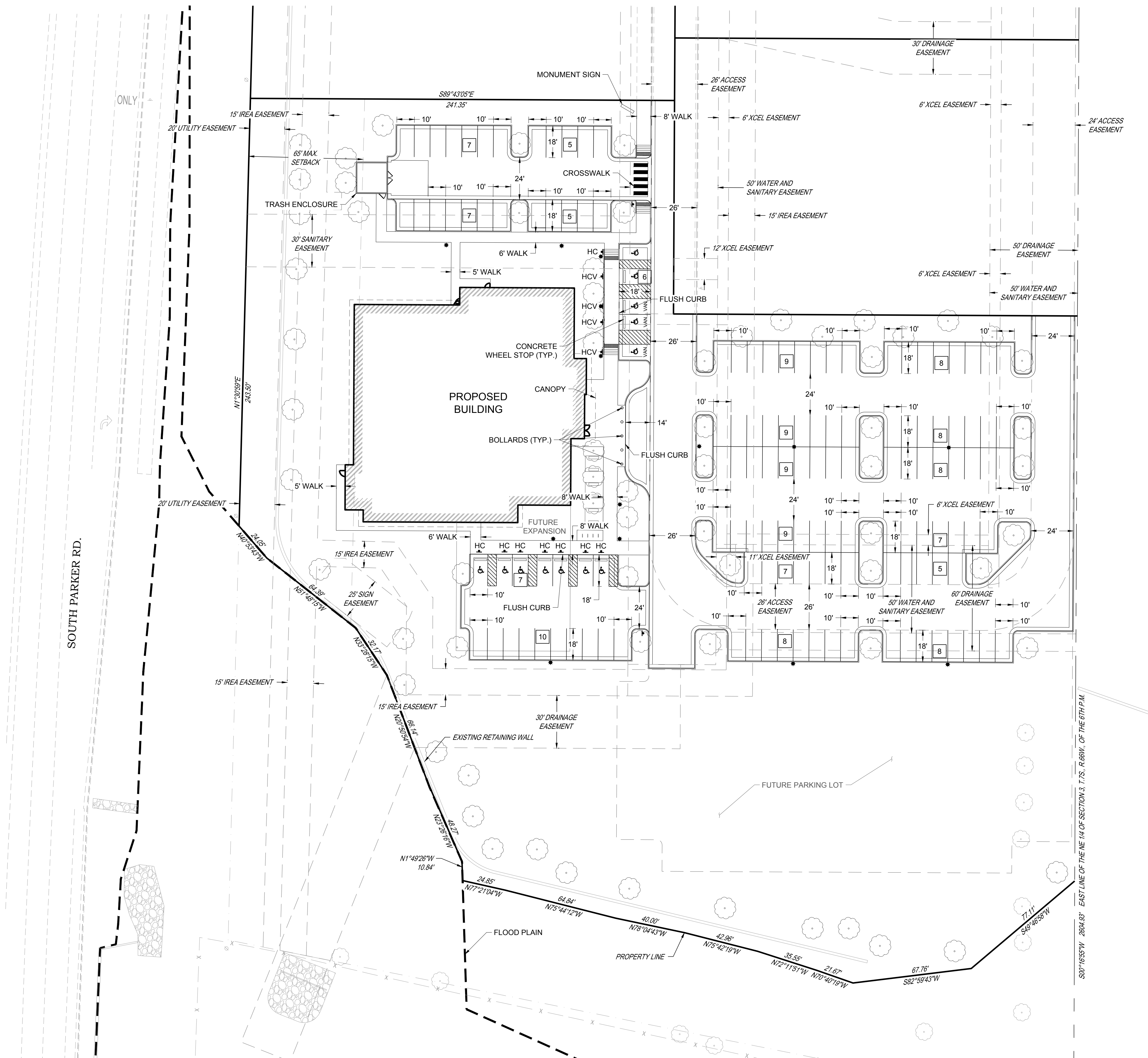
DRAWING NUMBER

02 OF 14

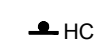


PARKER POINTE SUBDIVISION FILING NO. 2 - LOT 1A

SITE DEVELOPMENT PLAN

A PARCEL OF LAND SITUATED IN THE NORTHEAST 1/4 OF SECTION 3, TOWNSHIP 7 SOUTH, RANGE 66 WEST OF THE 6TH PRINCIPAL MERIDIAN, COUNTY OF DOUGLAS, STATE OF COLORADO.



LEGEND:

-  PROPOSED "HANDICAP PARKING" SIGN
-  PROPOSED "VAN ACCESSIBLE HANDICAP PARKING" SIGN
-  PARKING STALL COUNT
9'X18' MINIMUM DIMENSIONS
UNLESS OTHERWISE SPECIFIED



BOULDER ASSOCIATES
1426 PEARL STREET, SUITE 300
BOULDER, COLORADO 80302
303.499.7795



S.A. MIRO INC.
CONSULTING ENGINEERS
4582 South Ulster Street
Suite 750, Denver, CO 80237
303-741-3737
www.samiro.com

CENTURA PARKER NHC
PARKER POINTE SUBDIVISION
LOTS 7, 8, 9 AND 10
PARKER, CO 80134

SUBMITTALS
DESCRIPTION DATE
1ST SUBMITTAL 07/28/2023

DATE
07/28/2023
PARKER PROJECT NUMBER
SP22-XXX
SHEET TITLE
SITE PLAN
DRAWING NUMBER
03 OF 14

PARKER POINTE SUBDIVISION FILING NO. 2 - LOT 1A

SITE DEVELOPMENT PLAN

A PARCEL OF LAND SITUATED IN THE NORTHEAST 1/4 OF SECTION 3, TOWNSHIP 7 SOUTH, RANGE 66 WEST OF THE 6TH PRINCIPAL MERIDIAN, COUNTY OF DOUGLAS, STATE OF COLORADO.

PLANTING SCHEDULE:

KEY	BOTANICAL NAME	COMMON NAME	SIZE	SPACING	HEIGHT	WIDTH
DECIDUOUS SHADE TREES						
WCA	<i>Catalpa speciosa</i>	Western Catalpa	2.5" cal.	as shown	40-60'	30-50'
WHB	<i>Celtis reticulata</i>	Western Hackberry	2.5" cal.	as shown	60'	40'
SHL	<i>Gleditsia triacanthos inermis</i> 'Shademaster'	Shademaster Honeylocust	2.5" cal.	as shown	50'	35'
KCT	<i>Gymnocladus dioica</i>	Kentucky Coffeetree	2.5" cal.	as shown	50-60'	40-50'
ENO	<i>Quercus robur</i>	English Oak	2.5" cal.	as shown	40-60'	40-60'
BRO	<i>Quercus macrocarpa</i>	Bur Oak	2.5" cal.	as shown	50-80'	50-80'
CKO	<i>Quercus muhlenbergii</i>	Chinkapin Oak	2.5" cal.	as shown	40 - 50'	40-50'
ACL	<i>Ulmus x 'Accolade'</i>	Accolade Elm	2.5" cal.	as shown	60 - 75'	35-45'
EVERGREEN TREES						
PPN	<i>Pinus ponderosa</i>	Ponderosa Pine	8'	as shown	40'	25'
VWP	<i>Pinus flexilis</i> 'Vanderwolf's Pyramid'	Vanderwolf's Pyramid Limber Pine	8'	as shown	20'	10'
ORNAMENTAL TREES						
ABS	<i>Amelanchier x grandiflora</i>	Autumn Brilliance Serviceberry	2" cal.	as shown	15 - 20'	10'
ACH	<i>Prunus maackia</i>	Amur Chokecherry	2" cal.	as shown	20-30'	20-25'
EVERGREEN SHRUBS						
PMZ	<i>Arctostaphylos coloradoensis</i>	Panchito Manzanita	#5	4' o.c.	12-24"	4'
BFJ	<i>Juniperus sabina</i> 'Buffalo'	Buffalo Juniper	#5	4' o.c.	12"	6'
SMP	<i>Pinus mugo</i> 'Slowmound'	Slowmound Mugo Pine	#5	4' o.c.	3'	4'
DECIDUOUS SHRUBS						
SKS	<i>Amelanchier alnifolia</i>	Saskatoon Serviceberry	#5	6' o.c.	6-12'	6-12'
MGY	<i>Cercocarpus montanus</i>	Mountain Mahogany	#5	6' o.c.	10'	6'
FRB	<i>Chamaebatiaria millefolium</i>	Fernbush	#5	4' o.c.	3-5'	3-6'
IDG	<i>Cornus sericea</i> 'Isanti'	Isanti Dogwood	#5	4' o.c.	4-6'	4'
DGM	<i>Acer ginnala</i> 'Compacta'	Dwarf Ginnala Maple	#5	6' o.c.	8'	8'
RSG	<i>Perovskia artiplicifolia</i>	Russian Sage	#5	4' o.c.	4'	4'
MKO	<i>Philadelphus lewisii</i> 'Cheyenne'	Cheyenne Mockorange	#5	6' o.c.	5-7'	4-6'
NNB	<i>Physocarpus monogynus</i>	Native Ninebark	#5	4' o.c.	3-4'	3-4'
WSC	<i>Prunus besseyi</i>	Western Sand Cherry	#5	6' o.c.	4-7'	4-6'
PBS	<i>Prunus besseyi</i> 'Pawnee Buttes'	Pawnee Buttes Sand Cherry	#5	3.5' o.c.	1-2'	4-6'
FRS	<i>Spiraea japonica</i> 'Froebelii'	Froebel Spirea	#5	3' o.c.	3-4'	3-4'
GLS	<i>Rhus aromatica</i> 'Grow Low'	Gro-Low Sumac	#5	6' o.c.	3'	8'
ALV	<i>Viburnum x rhytidophyloides</i> 'Alleghany'	Allegheny Viburnum	#5	6' o.c.	10'	10'
APC	<i>Ribes alpinum</i>	Alpine Currant	#5	4' o.c.	3-6'	3-6'
GMC	<i>Ribes alpinum</i> 'Green Mound'	Green Mound Currant	#5	3' o.c.	3-4'	3-4'
TLS	<i>Rhus trilobata</i>	Three-Leaf Sumac	#5	4' o.c.	3-4'	3-4'
DKL	<i>Syringa meyeri</i>	Dwarf Korean Lilac	#5	4' o.c.	4-6'	4-6'
ORNAMENTAL GRASSES						
BGG	<i>Bouteloua gracilis</i> 'Blonde Ambition'	Blonde Ambition Blue Grama Grass	#1	2' o.c.	2-3'	2-3'
SSG	<i>Panicum virgatum</i> 'Shenandoah'	Shenandoah Red Switch Grass	#1	2' o.c.	4-5'	2'
LBS	<i>Schizachyrium scoparium</i> 'The Blues'	The Blues Little Bluestem	#1	24" o.c.	30-40"	2'
PERENNIALS						
PCF	<i>Echinacea purpurea</i>	Purple Coneflower	#1	24" o.c.	24-36"	18-24"
SHS	<i>Agastache rupestris</i>	Sunset Hyssop	#1	18" o.c.	24-36"	24-36"

PARKING LOT PERIMETER CHART:

LANDSCAPE AREA TYPE	BUFFER WIDTH REQUIRED	BUFFER WIDTH PROVIDED
PARKING LOT PERIMETER NORTH	ADJACENT TO SITE WITH SIMILAR USE = 8' MIN.	19'
PARKING LOT PERIMETER EAST	ADJACENT TO SITE WITH SIMILAR USE = 8' MIN.	36'
PARKING LOT PERIMETER SOUTH	ADJACENT TO SITE WITH SIMILAR USE = 8' MIN.	121' - 180'

SITE PERIMETER LANDSCAPE CHART:

LANDSCAPE AREA TYPE	LENGTH	TREES REQ. (1 / 40' LF)	TREES PROVIDED	SHRUBS REQ. (5 / 40' LF)	SHRUBS PROVIDED
North Property Line	445'	11	11	56	66
East Property Line	442'	11	11	55	55
South Property Line	374'	9	9	47	47
West Property Line	488'	12	12	61	61
% of Evergreen Trees		min 40% max 60%	55%		

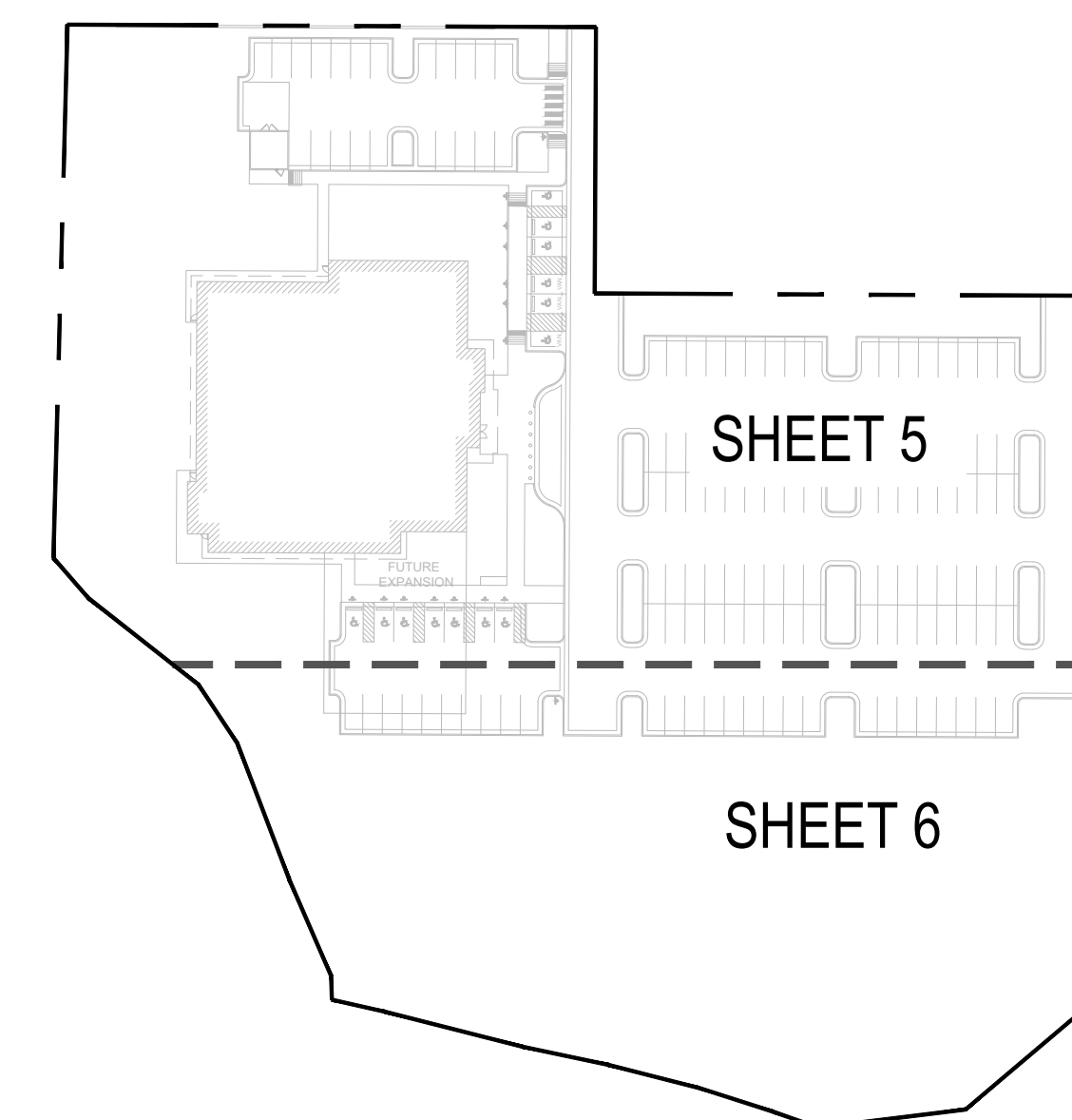
TOWN OF PARKER - NATIVE GRASS MIX 'B'

BOTANICAL NAME	COMMON NAME	%	PLS / ACRE
<i>Elymus trachycaulus</i>	Slender Wheatgrass	22	5.5
<i>Elymus lanceolatus</i>	Sodar Streambank Wheatgrass	18	4.5
<i>Festuca arizonica</i>	Arizona Fescue	13	3.25
<i>Bouteloua gracilis</i>	Blue Grama	13	3.25
<i>Bouteloua dactyloides</i>	Buffalograss	12	3
<i>Hordeum vulgare</i>	Barley Grass	12	3
<i>Muhlenbergia glomerata</i>	Spike Muhly	5	1.25
<i>Oryzopsis hymenoides</i>	Indian Ricegrass	5	1.25
Total lbs per acre:		100	25

PARKING LOT INTERIOR LANDSCAPE CALCULATION CHART:

ISLAND TYPE	AREA OF THE ISLAND	# OF TREES REQUIRED (1/ 162 FT)	# OF TREES PROVIDED	# OF SHRUBS REQUIRED (5/162 FT)	# OF SHRUBS PROVIDED
ISLAND 1	582 SQ. FT	3	2	18	18
ISLAND 2	310 SQ. FT	2	2	10	10
ISLAND 3	162 SQ. FT.	1	1	5	5
ISLAND 4	231 SQ. FT	1	1	7	7
ISLAND 5	450 SQ. FT	3	2	18	18
ISLAND 6	450 SQ. FT	3	2	18	18
ISLAND 7	428 SQ. FT	3	2	13	13
ISLAND 8	310 SQ. FT	2	2	10	10
ISLAND 9	162 SQ. FT	1	1	5	5
ISLAND 10	295 SQ. FT	2	1	10	10
ISLAND 11	132 SQ. FT	1	1	5	5
ISLAND 12	162 SQ. FT	1	1	5	5
ISLAND 13	247 SQ. FT	1	1	8	8
ISLAND 14	247 SQ. FT	1	1	8	8
ISLAND 15	162 SQ. FT	1	1	5	5
ISLAND 16	321 SQ. FT	2	1	10	10
ISLAND 17	231 SQ. FT	1	1	8	8
ISLAND 18	162 SQ. ST	1	1	5	5
TOTALS:	5,479 SQ. FT	33	24	173	185

KEY MAP :



OVERALL LANDSCAPE CALCULATION CHART:

LANDSCAPE AREA TYPE	AREA / LENGTH	REQUIRED AMOUNT	AMOUNT PROVIDED
Total Site Area	177,770 SQ. FT		
Landscape Area		26,666 SQ. FT. (15%) MIN.	93,437 SQ. FT. (52.5%)
% of Living Plant Materials		75% MIN.	90%
% of Turf Area		4,000 SQ. FT.	0 SQ. FT. (0%)
% of Evergreen		25-50%	27%
Total Plantings (1 Tree and 5 shrubs per 1,500 SQ. FT.)		Required Trees: 18, Required Shrubs: 89	Provided Trees: 69, Provided Shrubs: 541



BOULDER ASSOCIATES

1426 PEARL STREET, SUITE 300
BOULDER, COLORADO 80302
303.499.7795



209 N. Kalamath St.
Unit 6, Denver, CO 80223
720-465-6168
www.oxbowdc.com

CENTURA PARKER NHC
PARKER POINTE SUBDIVISION
LOTS 7, 8, 9 AND 10
PARKER, CO 80134

SUBMITTALS

DESCRIPTION DATE
1ST SUBMITTAL 07/28/2023

DATE

07/28/2023

PARKER PROJECT NUMBER

SP22-XXX

SHEET TITLE

LANDSCAPE COVER SHEET

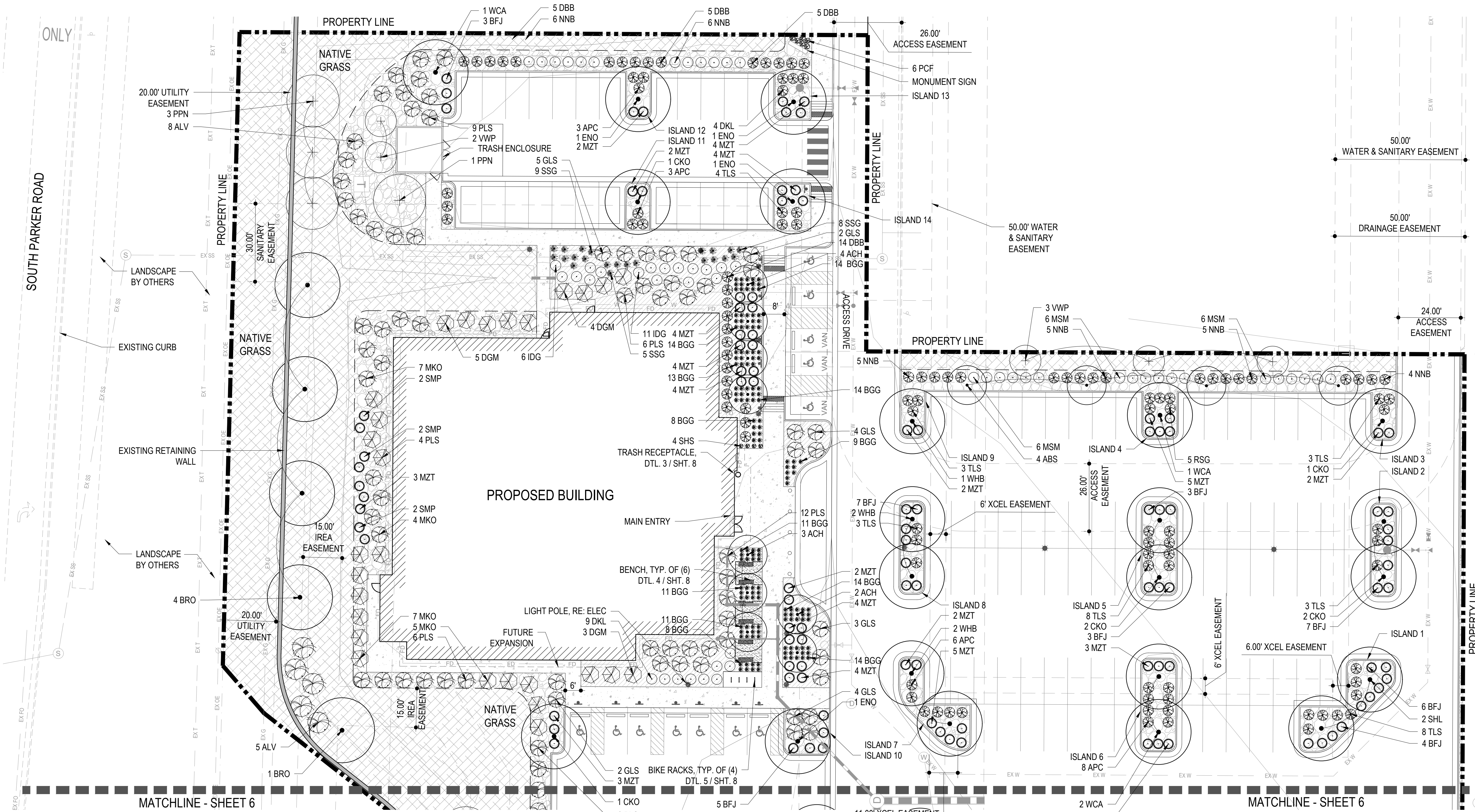
DRAWING NUMBER

4 OF 14

PARKER POINTE SUBDIVISION FILING NO. 2 - LOT 1A

SITE DEVELOPMENT PLAN

A PARCEL OF LAND SITUATED IN THE NORTHEAST 1/4 OF SECTION 3, TOWNSHIP 7 SOUTH, RANGE 66 WEST OF THE 6TH PRINCIPAL MERIDIAN, COUNTY OF DOUGLAS, STATE OF COLORADO.



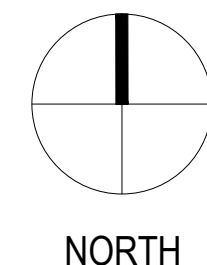
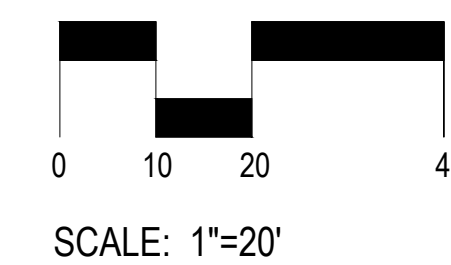
1 LANDSCAPE PLAN
5 SCALE: 1" = 20'

MATERIAL LEGEND:

	PROPERTY LINE		WESTERN RED CEDAR WOOD MULCH
	STEEL EDGER		CRUSHER FINES
	EXISTING RETAINING WALL		BENCH
	CONCRETE PAVING - PEDESTRIAN (4" TH) LIGHT BROOM FINISH W/ SAW CUT JOINTS		
	1-1/2" RIVER ROCK MULCH		

PLANTING LEGEND:

	DECIDUOUS SHADE TREE		EXISTING TREE TO REMAIN		ORNAMENTAL GRASSES
	ORNAMENTAL TREE		DECIDUOUS SHRUB		PERENNIALS
	EVERGREEN TREE		EVERGREEN SHRUB		NATIVE GRASS MIX - SEE SHEET L100 FOR SEED M



BOULDER ASSOCIATES
1426 PEARL STREET, SUITE 300
BOULDER, COLORADO 80302
303.499.7795



209 N. Kalamath St.
Unit 6, Denver, CO 80223
720-465-6168
www.oxbowdc.com

CENTURA PARKER NHC
PARKER POINTE SUBDIVISION
LOTS 7, 8, 9 AND 10
PARKER, CO 80134

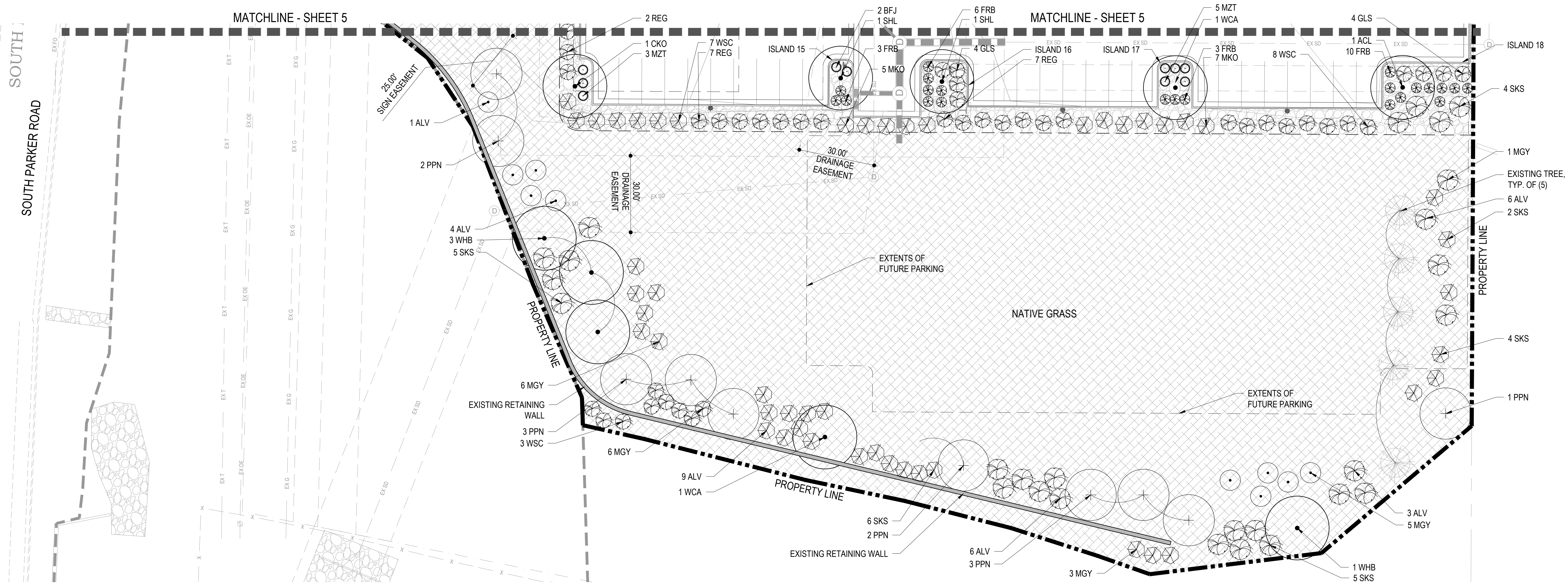
SUBMITTALS
DESCRIPTION DATE
1ST SUBMITTAL 07/28/2023

DATE
07/28/2023
PARKER PROJECT NUMBER
SP22-XXX
SHEET TITLE
LANDSCAPE PLAN
DRAWING NUMBER
5 OF 14

PARKER POINTE SUBDIVISION FILING NO. 2 - LOT 1A

SITE DEVELOPMENT PLAN

A PARCEL OF LAND SITUATED IN THE NORTHEAST 1/4 OF SECTION 3, TOWNSHIP 7 SOUTH, RANGE 66 WEST OF THE 6TH PRINCIPAL MERIDIAN, COUNTY OF DOUGLAS, STATE OF COLORADO.



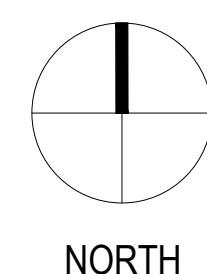
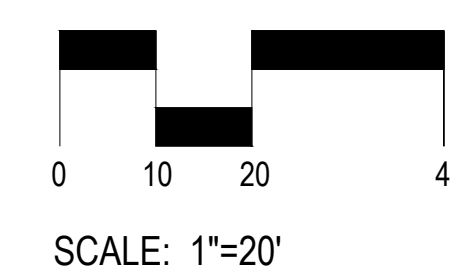
1 LANDSCAPE PLAN
6 SCALE: 1" = 20'

MATERIAL LEGEND:

- PROPERTY LINE
- STEEL EDGER
- EXISTING RETAINING WALL
- CONCRETE PAVING - PEDESTRIAN (4" TH) LIGHT BROOM FINISH W/ SAW CUT JOINTS
- 1-1/2" RIVER ROCK MULCH
- WESTERN RED CEDAR WOOD MULCH
- CRUSHER FINES

PLANTING LEGEND:

- DECIDUOUS SHADE TREE
- ORNAMENTAL TREE
- EVERGREEN TREE
- EXISTING TREE TO REMAIN
- DECIDUOUS SHRUB
- EVERGREEN SHRUB
- ORNAMENTAL GRASSES
- PERENNIALS
- NATIVE GRASS MIX - SEE SHEET L100 FOR SEED M



BOULDER ASSOCIATES

1426 PEARL STREET, SUITE 300
BOULDER, COLORADO 80302
303.499.7795



209 N. Kalamath St.
Unit 6, Denver, CO 80223
720-465-6168
www.oxbowdc.com

CENTURA PARKER NHC
PARKER POINTE SUBDIVISION
LOTS 7, 8, 9 AND 10
PARKER, CO 80134

SUBMITTALS
DESCRIPTION DATE
1ST SUBMITTAL 07/28/2023

DATE 07/28/2023

PARKER PROJECT NUMBER SP22-XXX

SHEET TITLE

LANDSCAPE PLAN

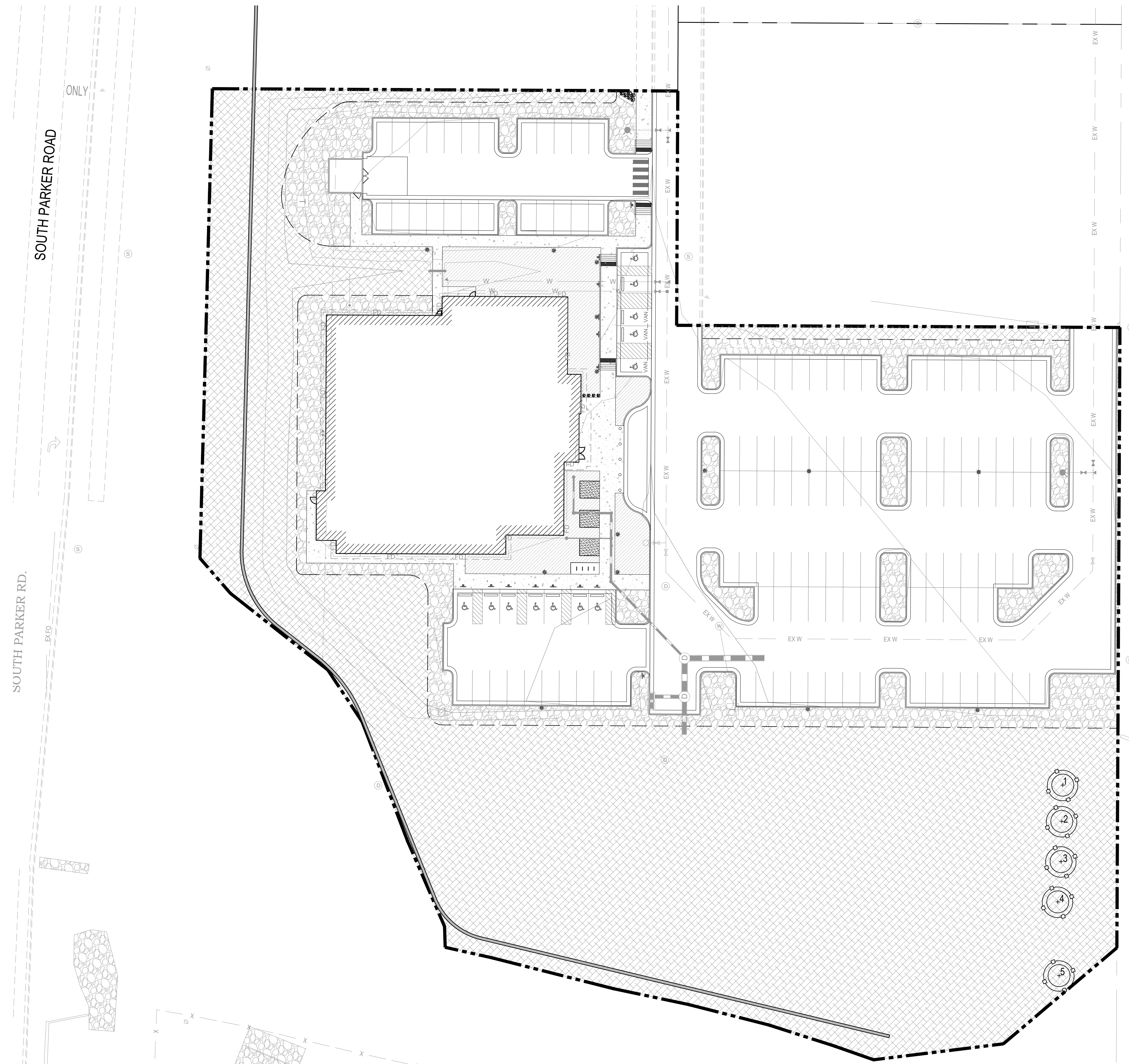
DRAWING NUMBER

6 OF 14

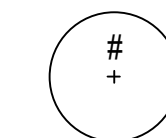
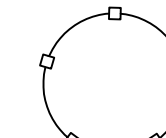

PARKER POINTE SUBDIVISION FILING NO. 2 - LOT 1A

SITE DEVELOPMENT PLAN

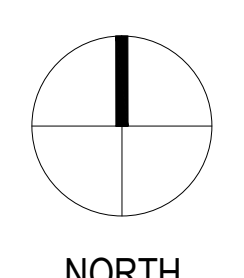
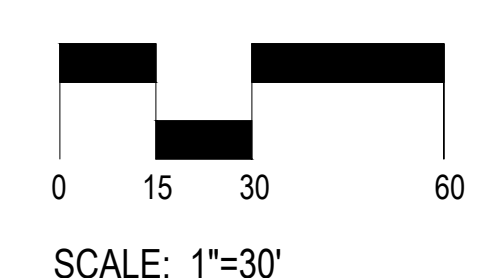
A PARCEL OF LAND SITUATED IN THE NORTHEAST 1/4 OF SECTION 3, TOWNSHIP 7 SOUTH,
RANGE 66 WEST OF THE 6TH PRINCIPAL MERIDIAN, COUNTY OF DOUGLAS, STATE OF COLORADO.



TREE CONSERVATION LEGEND:

-  EXISTING TREES TO BE PRESERVED
-  TREE PROTECTION FENCING,
RE: DTL. 3 / SHT. 5
-  PROPERTY LINE

1 TREE CONSERVATION PLAN
7 SCALE: 1" = 30'



BOULDER ASSOCIATES
1426 PEARL STREET, SUITE 300
BOULDER, COLORADO 80302
303.499.7795



209 N. Kalamath St.
Unit 6, Denver, CO 80223
720-465-6168
www.oxbowdc.com

**CENTURA
PARKER NHC**
PARKER POINTE SUBDIVISION
LOTS 7, 8, 9 AND 10
PARKER, CO 80134

SUBMITTALS
DESCRIPTION DATE
1ST SUBMITTAL 07/28/2023

DATE
07/28/2023

PARKER PROJECT NUMBER
SP22-XXX

SHEET TITLE
TREE CONSERVATION
PLAN

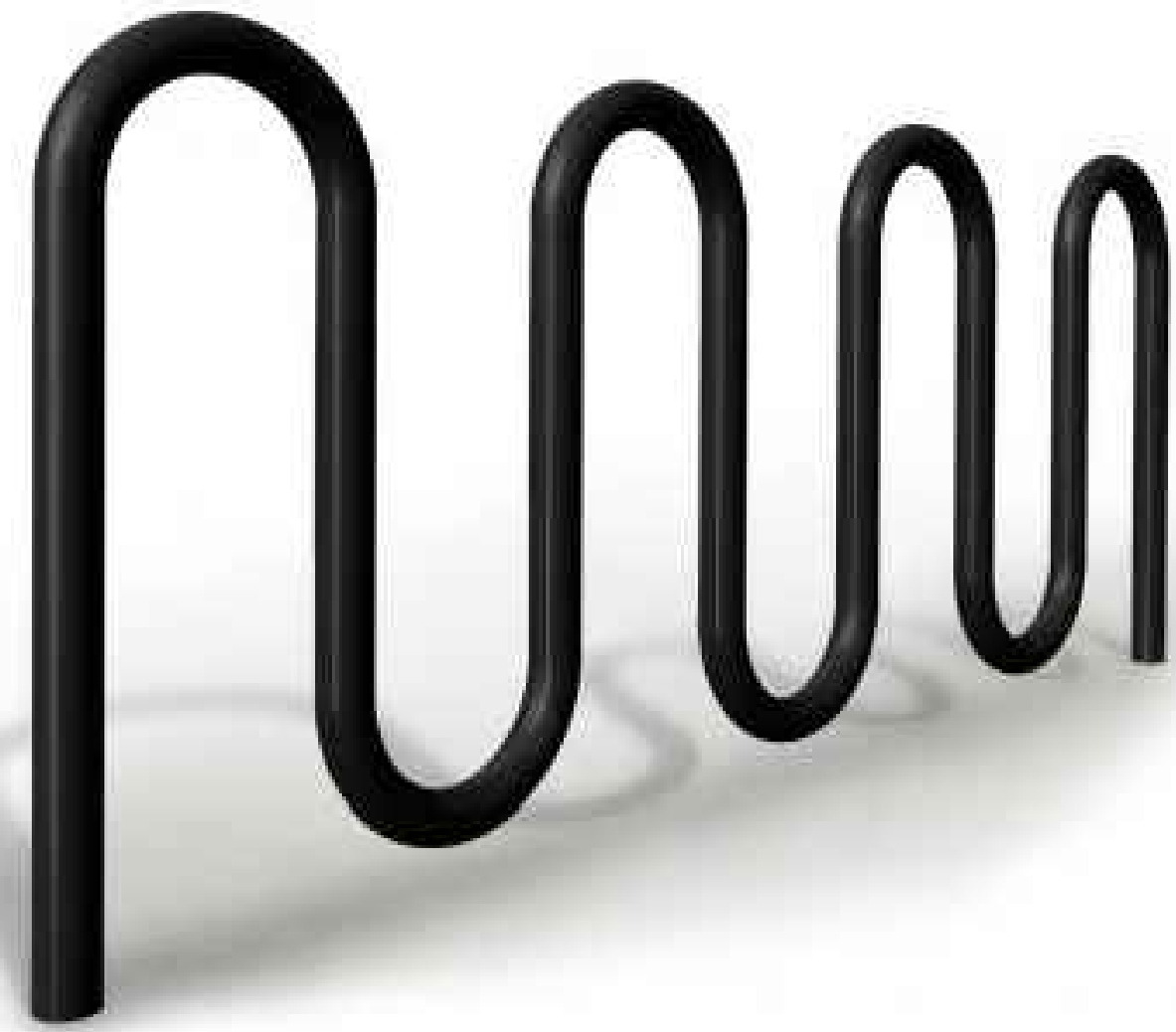
DRAWING NUMBER

7 OF 14

PARKER POINTE SUBDIVISION FILING NO. 2 - LOT 1A

SITE DEVELOPMENT PLAN

A PARCEL OF LAND SITUATED IN THE NORTHEAST 1/4 OF SECTION 3, TOWNSHIP 7 SOUTH, RANGE 66 WEST OF THE 6TH PRINCIPAL MERIDIAN, COUNTY OF DOUGLAS, STATE OF COLORADO.



MANU: VICTOR STANLEY
 PRODUCT: BRCS-107
 COLOR: BLACK
 FINISH: POWDER COATED STEEL

5 BIKE RACK
 8 SCALE: NTS



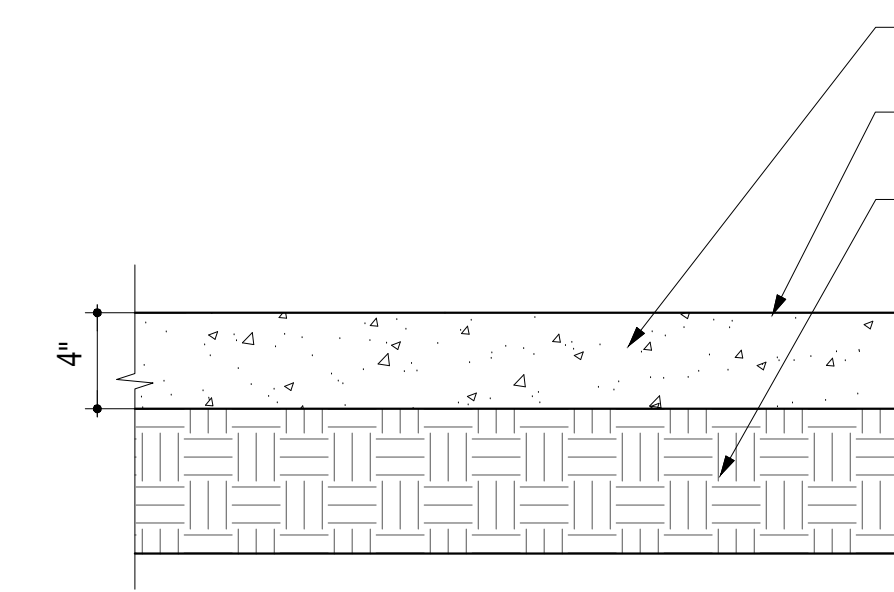
MANU: VICTOR STANLEY
 PRODUCT: RB-36
 COLOR: BLACK
 FINISH: POWDER COATED POLYESTER

3 TRASH RECEPTACLE
 8 SCALE: NTS



MANU: VICTOR STANLEY
 PRODUCT: RMS-24
 COLOR: BLACK
 FINISH: POWDER COATED POLYESTER

4 BENCH
 8 SCALE: NTS

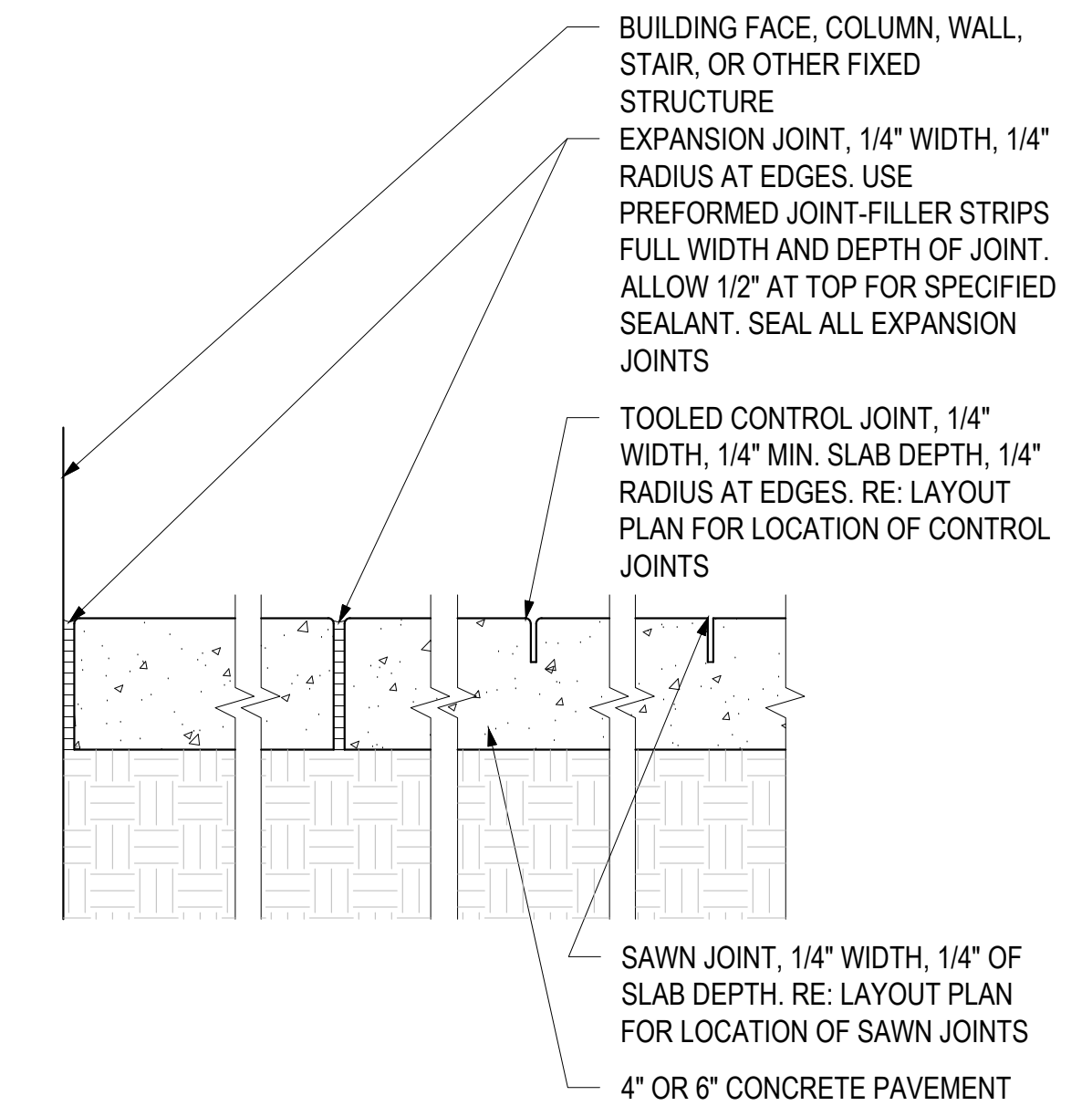


4,000 PSI CONCRETE, AIR ENTRAINED PORTLAND CEMENT.
 LIGHT ACID ETCH FINISH UNLESS OTHERWISE NOTED IN PLANS
 COMPACTED SUBGRADE

NOTES:

1. PROVIDE POSITIVE DRAINAGE OFF PAVING AT ALL LOCATIONS. ADJUST ADJACENT GRADES AS NECESSARY TO PROPERLY DRAIN.
2. MAXIMUM CROSS-SLOPES TO BE 2% UNLESS OTHERWISE SHOWN ON DRAWINGS.
3. REFER TO GEOTECHNICAL REPORT FOR PAVEMENT THICKNESS RECOMMENDATIONS.

1 CONCRETE PAVING DETAIL - PEDESTRIAN
 8 SCALE: 1 1/2" = 1'-0"



BUILDING FACE, COLUMN, WALL, STAIR, OR OTHER FIXED STRUCTURE
 EXPANSION JOINT, 1/4" WIDTH, 1/4" RADIUS AT EDGES. USE PREFORMED JOINT-FILLER STRIPS FULL WIDTH AND DEPTH OF JOINT. ALLOW 1/2" AT TOP FOR SPECIFIED SEALANT. SEAL ALL EXPANSION JOINTS
 TOOLED CONTROL JOINT, 1/4" WIDTH, 1/4" MIN. SLAB DEPTH, 1/4" RADIUS AT EDGES. RE: LAYOUT PLAN FOR LOCATION OF CONTROL JOINTS
 SAWN JOINT, 1/4" WIDTH, 1/4" OF SLAB DEPTH. RE: LAYOUT PLAN FOR LOCATION OF SAWN JOINTS
 4" OR 6" CONCRETE PAVEMENT

2 CONCRETE JOINTING
 8 SCALE: 1-1/2" = 1'-0"



BOULDER ASSOCIATES

1426 PEARL STREET, SUITE 300
 BOULDER, COLORADO 80302
 303.499.7795



209 N. Kalamath St.
 Unit 6, Denver, CO 80223
 720-465-6168
 www.oxbowdc.com

CENTURA
 PARKER NHC
 PARKER POINTE SUBDIVISION
 LOTS 7, 8, 9 AND 10
 PARKER, CO 80134

SUBMITTALS
 DESCRIPTION DATE
 1ST SUBMITTAL 07/28/2023

DATE
 07/28/2023

PARKER PROJECT NUMBER
 SP22-XXX

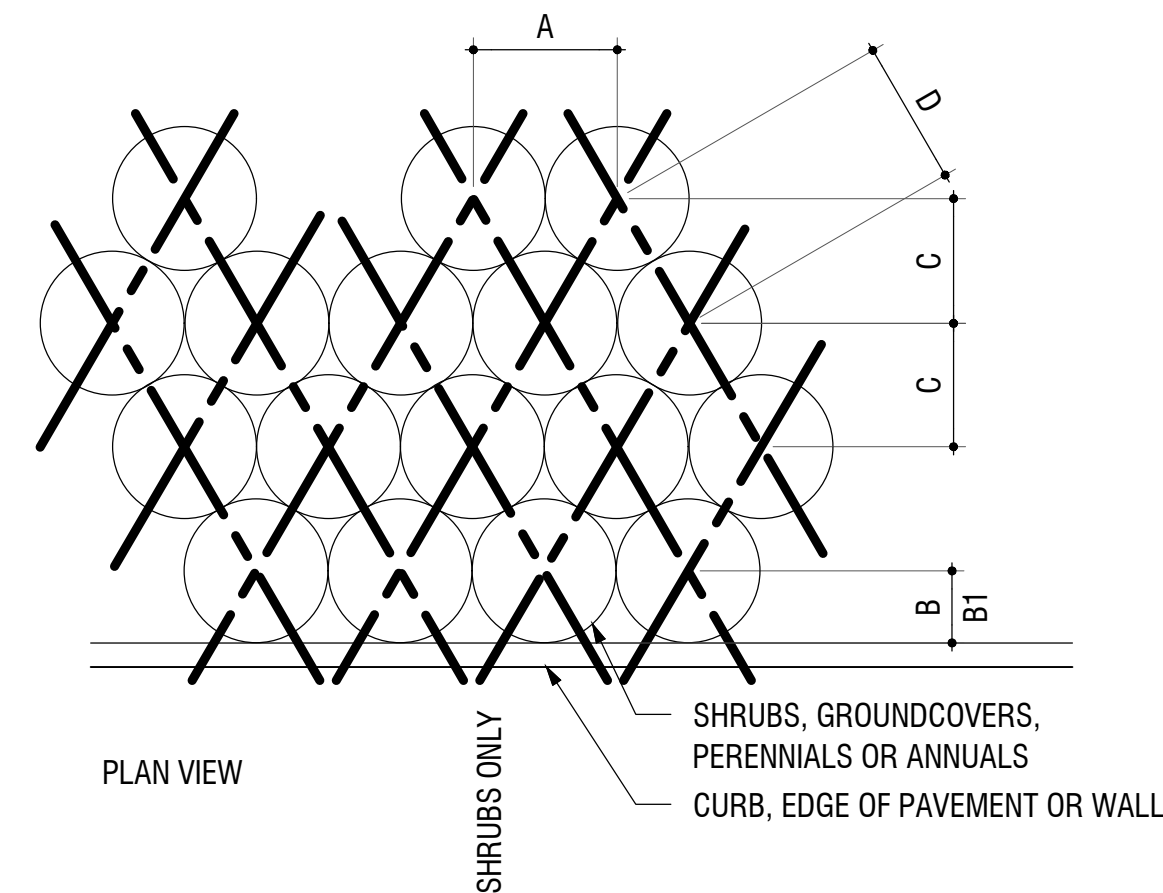
SHEET TITLE

DRAWING NUMBER

PARKER POINTE SUBDIVISION FILING NO. 2 - LOT 1A

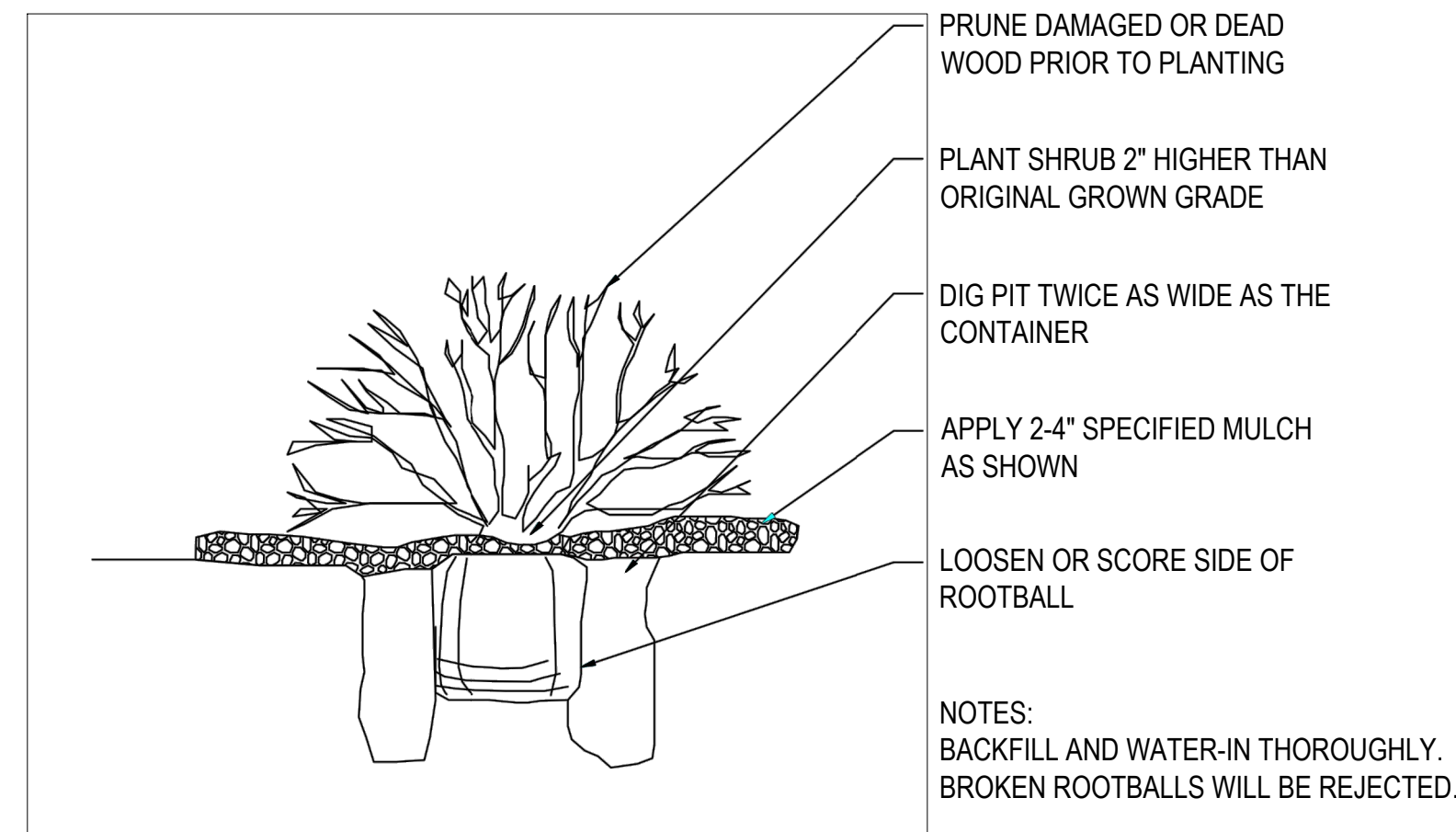
SITE DEVELOPMENT PLAN

A PARCEL OF LAND SITUATED IN THE NORTHEAST 1/4 OF SECTION 3, TOWNSHIP 7 SOUTH, RANGE 66 WEST OF THE 6TH PRINCIPAL MERIDIAN, COUNTY OF DOUGLAS, STATE OF COLORADO.

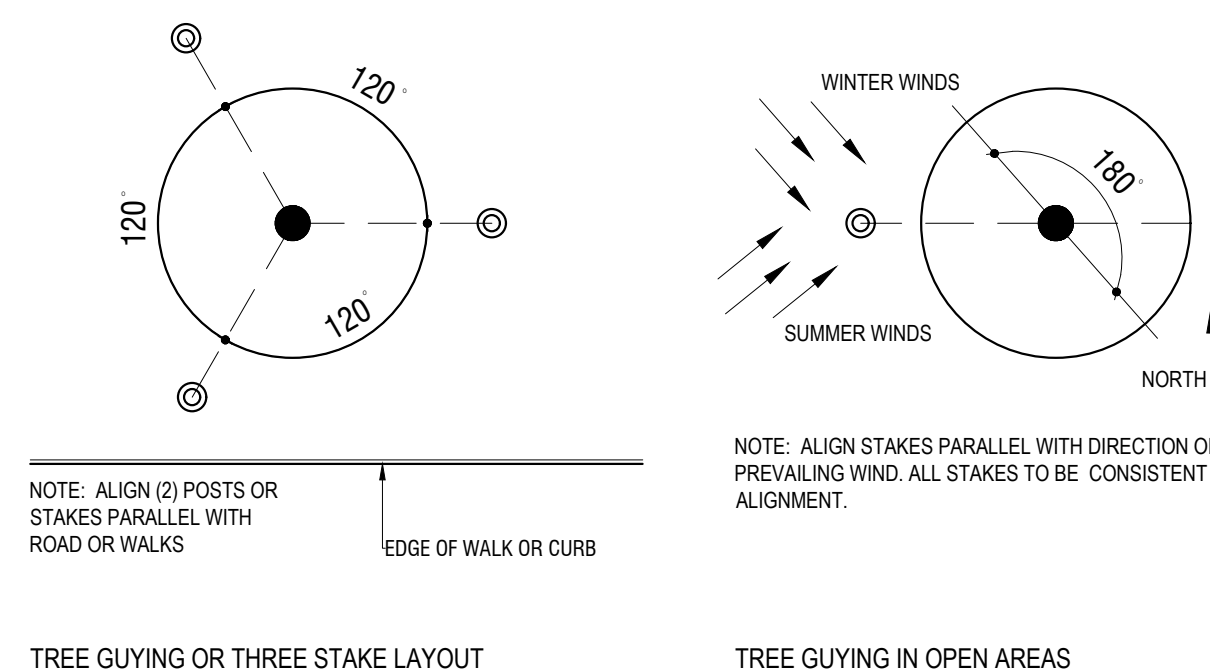


PLANT SPACING	A	B	B1	C	D
6"	6"	6"	6"	5"	6"
8"	8"	6"	8"	7"	8"
12"	12"	6"	12"	10"	12"
18"	18"	8"	18"	15"	18"
24"	24"	18"	24"	20"	24"
30"	30"	18"	30"	26"	30"
36"	36"	24"	36"	31"	36"
48"	48"	24"	48"	41"	48"

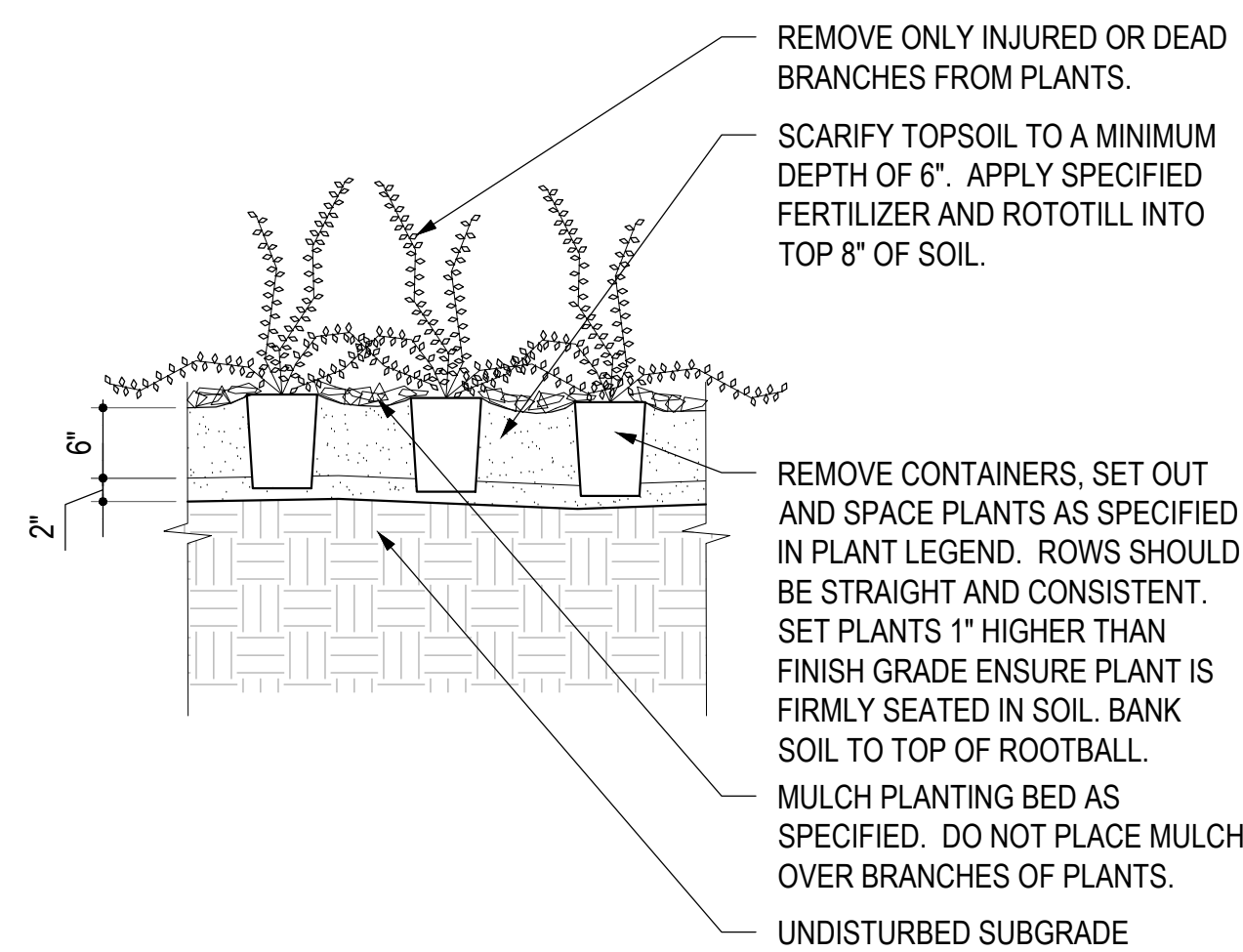
5 PLANT SPACING DETAIL
9 SCALE: 3/4" = 1'-0"



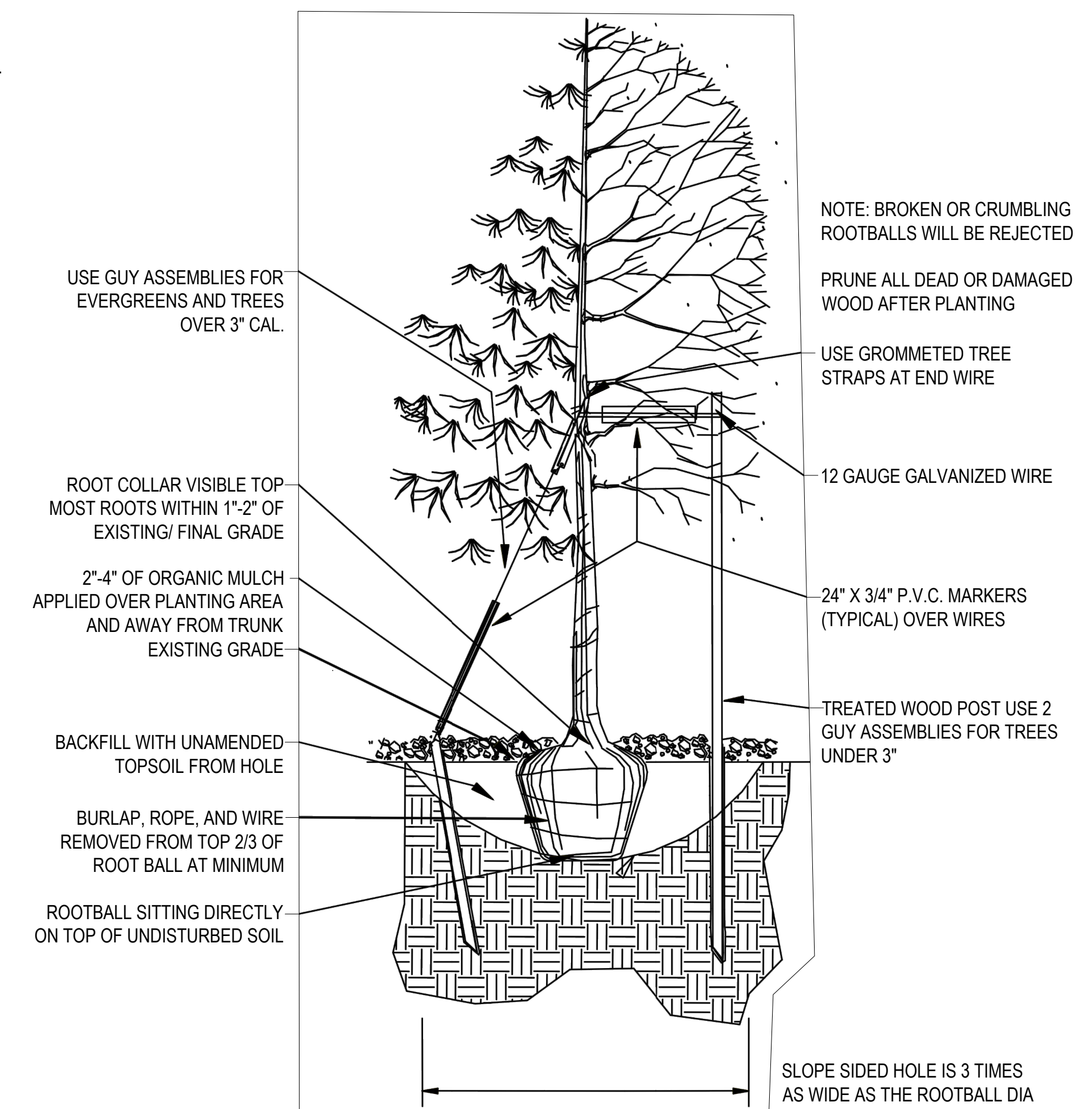
2 SHRUB PLANTING DETAIL
9 SCALE: 1/2" = 1'-0"



3 TREE GUYING DETAIL
9 SCALE: 3/4" = 1'-0"



4 GROUNDCOVER DETAIL
9 SCALE: 3/4" = 1'-0"



1 TREE PLANTING DETAIL
9 SCALE: 1/2" = 1'-0"



BOULDER ASSOCIATES

1426 PEARL STREET, SUITE 300
BOULDER, COLORADO 80302
303.499.7795



209 N. Kalamath St.
Unit 6, Denver, CO 80223
720-465-6168
www.oxbowdc.com

CENTURA
PARKER NHC
PARKER POINTE SUBDIVISION
LOTS 7, 8, 9 AND 10
PARKER, CO 80134

SUBMITTALS
DESCRIPTION DATE
1ST SUBMITTAL 07/28/2023

DATE 07/28/2023

PARKER PROJECT NUMBER SP22-XXX

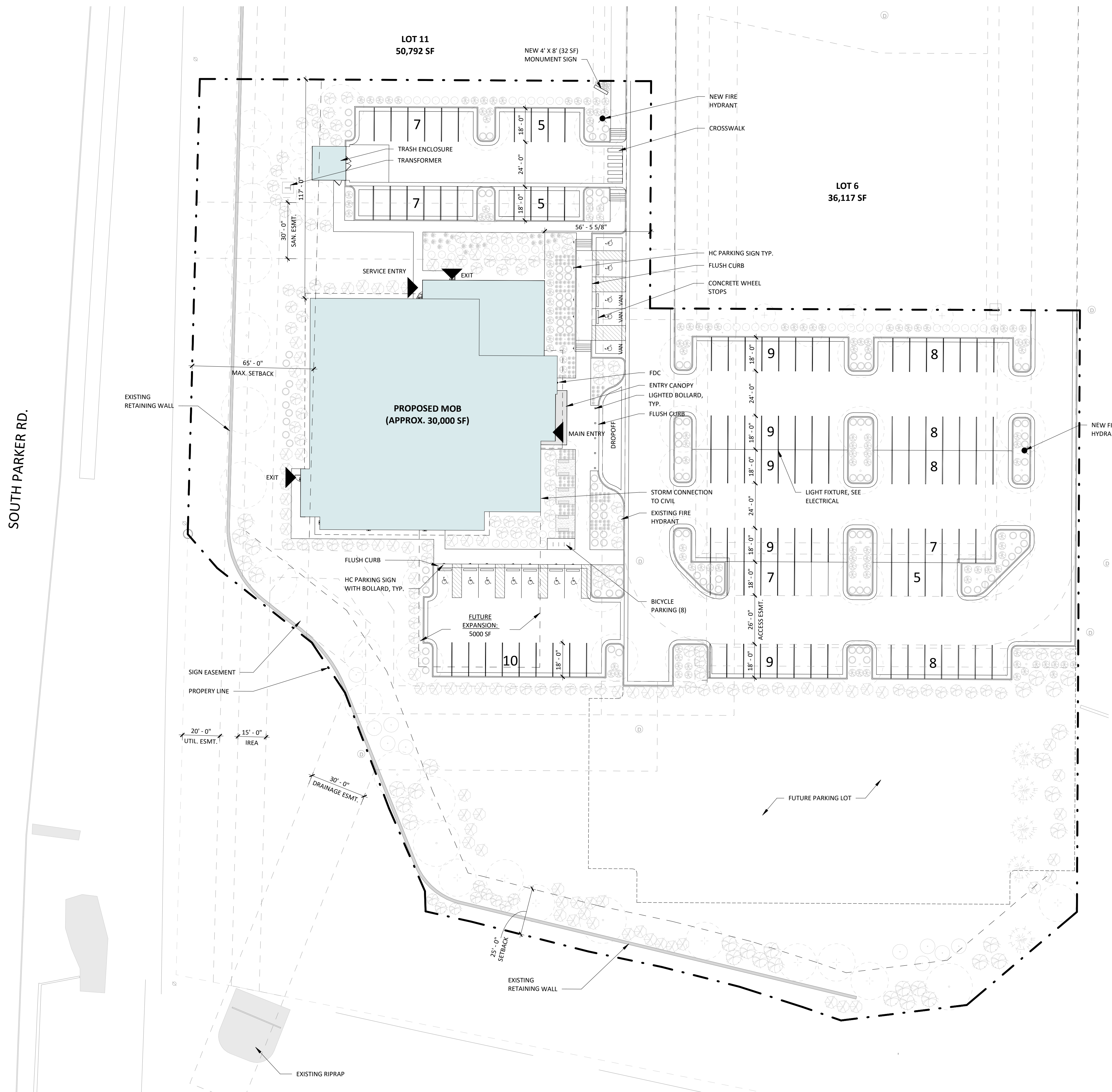
SHEET TITLE PLANTING DETAILS

DRAWING NUMBER

PARKER POINTE SUBDIVISION FILING NO. 2 - LOT 1A

SITE DEVELOPMENT PLAN

A PARCEL OF LAND SITUATED IN THE NORTHEAST 1/4 OF SECTION 3, TOWNSHIP 7 SOUTH, RANCE 66 WEST OF THE 6TH PRINCIPAL MERIDIAN, COUNTY OF DOUGLAS, STATE OF COLORADO.



GROSS BUILDING AREA	
NAME	AREA
FLOOR 1	15,611 SF
FLOOR 2	14,135 SF
TOTAL	29,745 SF

PARKING COUNT	
PHASE 1: 29,745 SF BUILDING	
REQUIRED:	29,745 / 300 PER NSF = 100
PROVIDED:	130 STANDARD SPACES (+/- 4.5 PER/ 1000 SF)
	12 HANDICAP SPACES
	TOTAL: 148
PHASE 2: 35k SF BUILDING	
REQUIRED:	135 (300 PER NSF)
PROVIDED:	85 NEW STANDARD SPACES
	215 STANDARD SPACES (+/- 6.5 PER/ 1000 SF)
	12 HANDICAP SPACES
	TOTAL: 227



BOULDER ASSOCIATES
1426 PEARL STREET, SUITE 300
BOULDER, COLORADO 80302
303.499.7795

CENTURA PARKER NHC
PARKER POINTE SUBDIVISION
LOTS 7, 8, 9 AND 10
PARKER, CO 80134

SUBMITTALS
DESCRIPTION DATE
1ST SUBMITTAL 07/28/2023

DATE
07/28/2023

PARKER PROJECT NUMBER
SP22-XXX

SHEET TITLE
**ARCHITECTURAL
SITE PLAN**

DRAWING NUMBER
10 OF 14

7/27/2023 1:51:07 PM
Autodesk Docs/7252860.00/Centura Parker NHC (23)2252860.00/Centura Parker NHC CS-A.rvt

PARKER POINTE SUBDIVISION FILING NO. 2 - LOT 1A

SITE DEVELOPMENT PLAN

A PARCEL OF LAND SITUATED IN THE NORTHEAST 1/4 OF SECTION 3, TOWNSHIP 7 SOUTH, RANCE 66 WEST OF THE 6TH PRINCIPAL MERIDIAN, COUNTY OF DOUGLAS, STATE OF COLORADO.



BOULDER ASSOCIATES

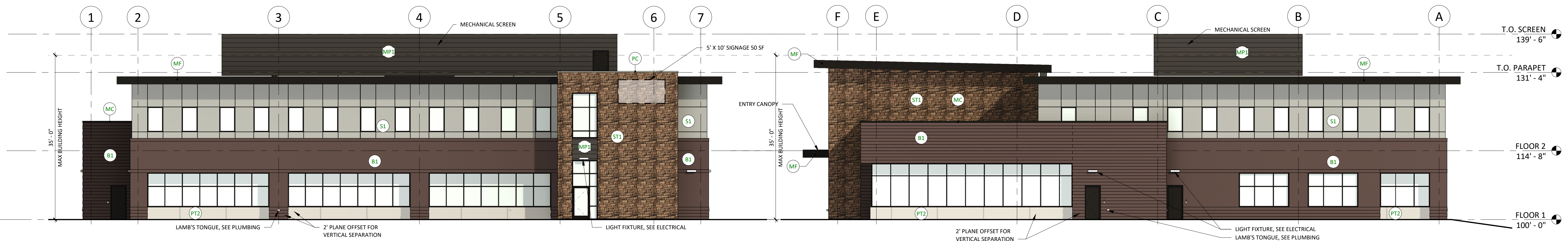
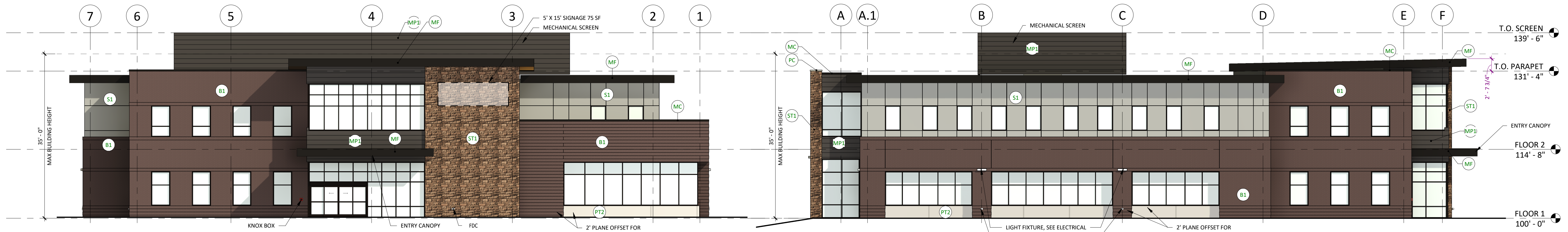
1426 PEARL STREET, SUITE 300
BOULDER, COLORADO 80302
303.499.7795

CENTURA PARKER NHC

PARKER POINTE SUBDIVISION
LOTS 7, 8, 9 AND 10
PARKER, CO 80134

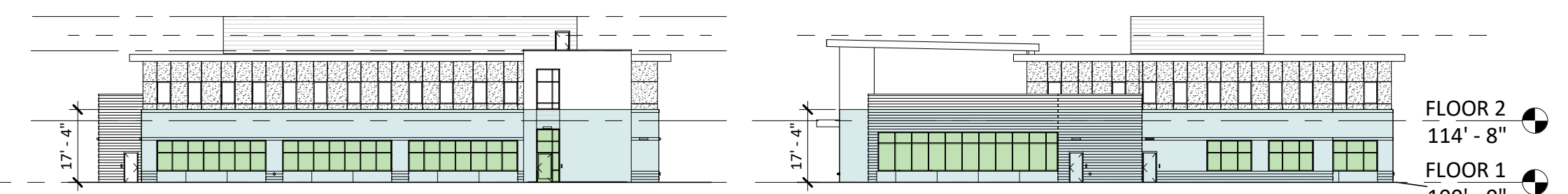
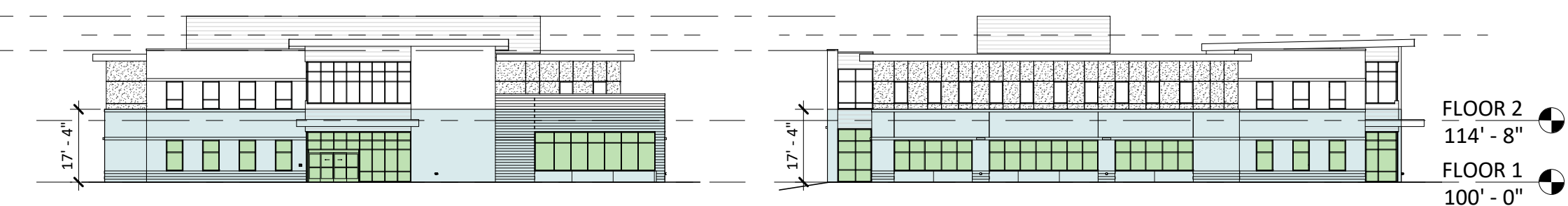
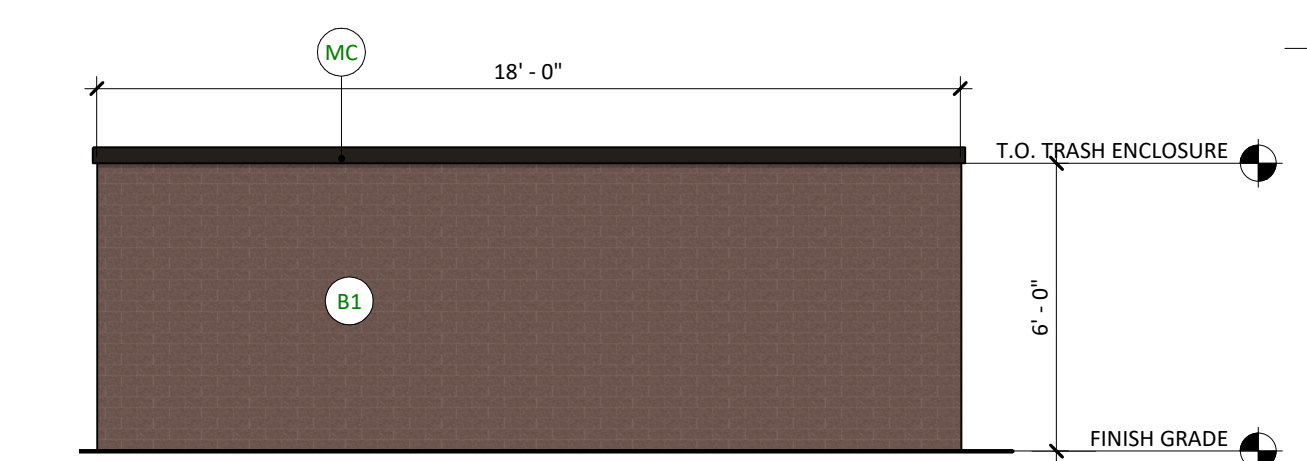
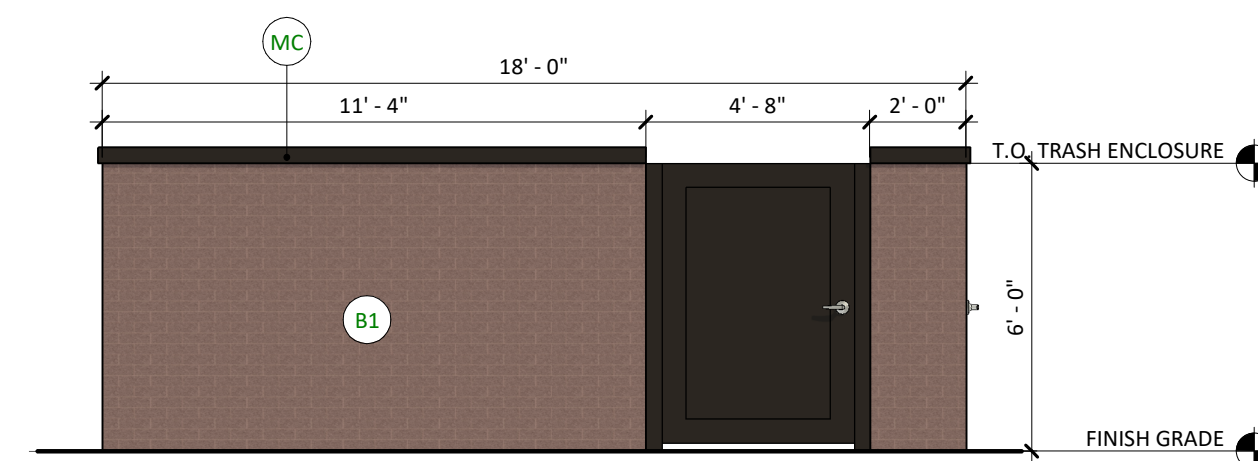
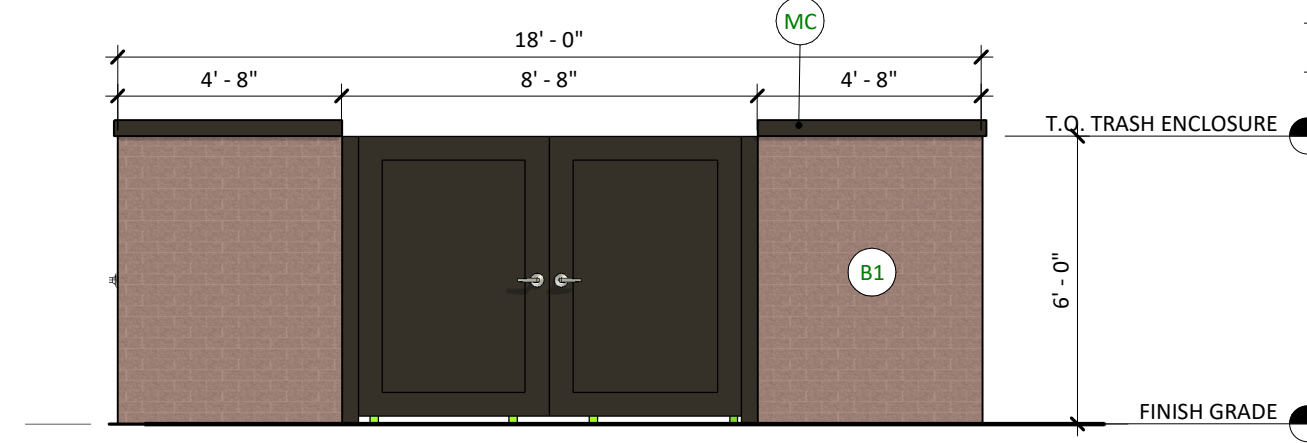
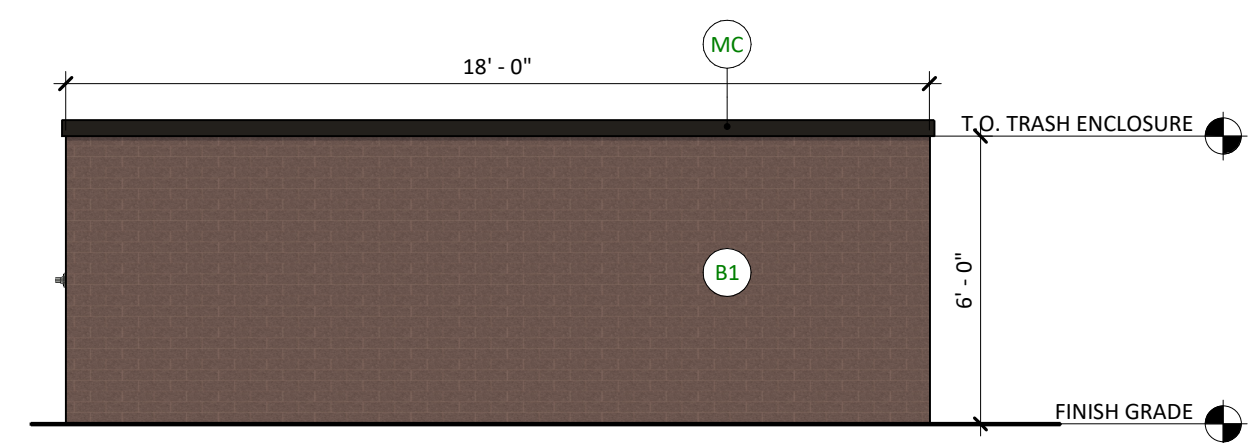
SUBMITTALS

DESCRIPTION DATE
1ST SUBMITTAL 07/28/2023



EXTERIOR ELEVATION MATERIAL LEGEND

- B1** BRICK 1 - BASIS OF DESIGN: SUMMIT BRICK, COLOR: "CHARCOAL IRONSPOT"
- S1** STUCCO 1 - BASIS OF DESIGN: STO POWERWALL, SAND PEBBLE, COLOR: TO MATCH "DRYVIT - GULL GRAY"
- ST1** STONE 1 - BASIS OF DESIGN: SUNSET STONE, DRY STACK LEDGE, COLOR: GEORGETOWN
- MP1** METAL PANEL 1 - COLOR: DARK BRONZE
- PT2** TILE 2 - COLOR: CONCRETE LOOK
- PC** PRECAST CONCRETE
- MF** PREFINISHED METAL FASCIA - BASIS OF DESIGN: BERRIDGE, COLOR: DARK BRONZE
- MC** PREFINISHED METAL COPING - BASIS OF DESIGN: BERRIDGE, COLOR: DARK BRONZE
- INSULATED GLAZING UNIT - VISION 1



GLAZING CALCULATIONS

FAÇADE	DESIGNATION	GLAZING AREA (SF)	BUILDING BASE AREA (SF)	REQUIRED GLAZING %	PROVIDED %
NORTH	SIDE	635	2,286	25%	28%
EAST	FRONT	685	2,314	30%	30%
SOUTH	SIDE	746	2,370	25%	31%
WEST	FRONT	639	2,137	30%	30%

DATE 07/28/2023

PARKER PROJECT NUMBER

SP22-XXX

SHEET TITLE

EXTERIOR ELEVATIONS

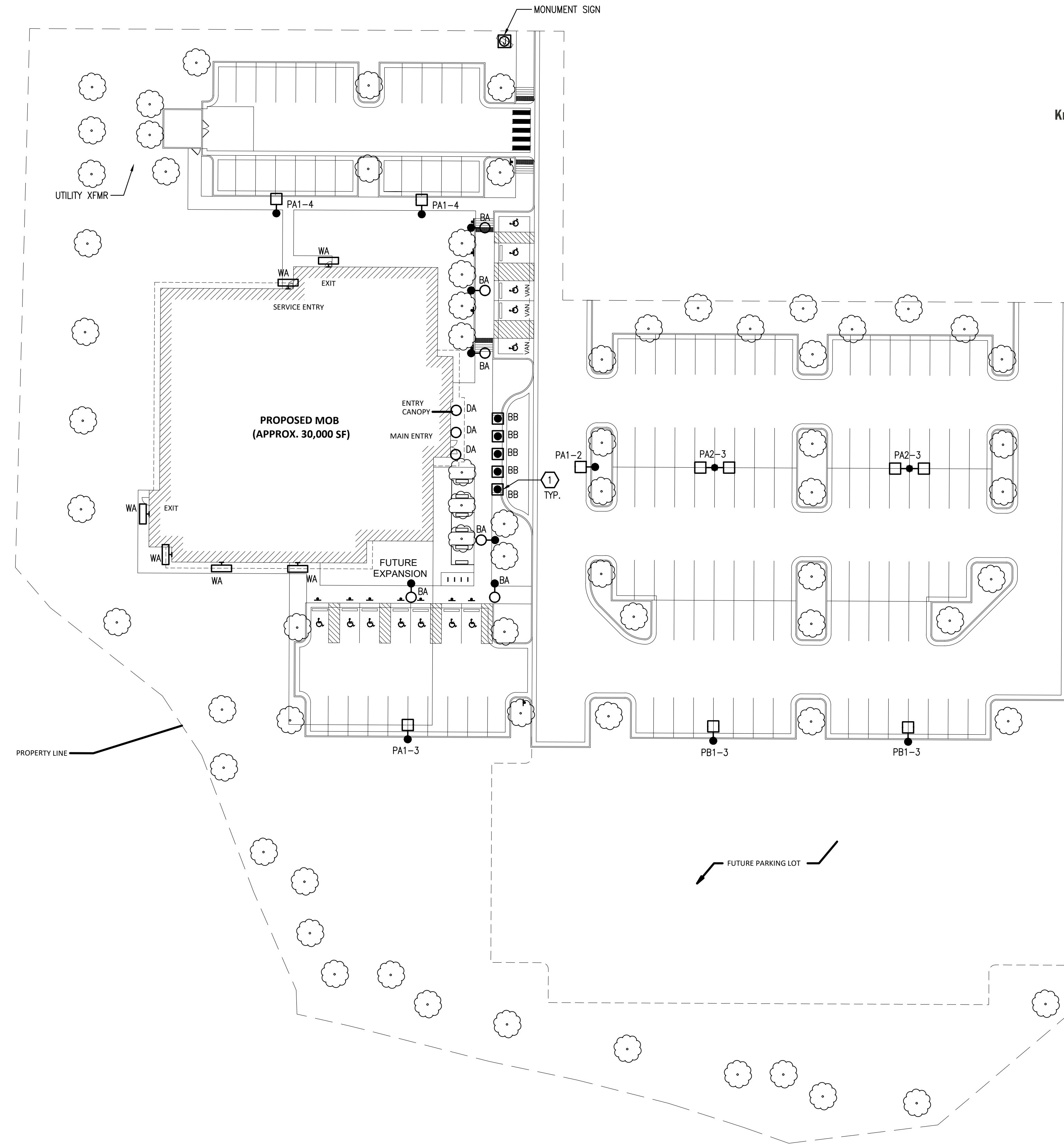
DRAWING NUMBER

11 OF 14

PARKER POINTE SUBDIVISION FILING NO. 2 - LOT 1A

SITE DEVELOPMENT PLAN

A PARCEL OF LAND SITUATED IN THE NORTHEAST 1/4 OF SECTION 3, TOWNSHIP 7 SOUTH, RANGE 66 WEST OF THE 6TH PRINCIPAL MERIDIAN, COUNTY OF DOUGLAS, STATE OF COLORADO.

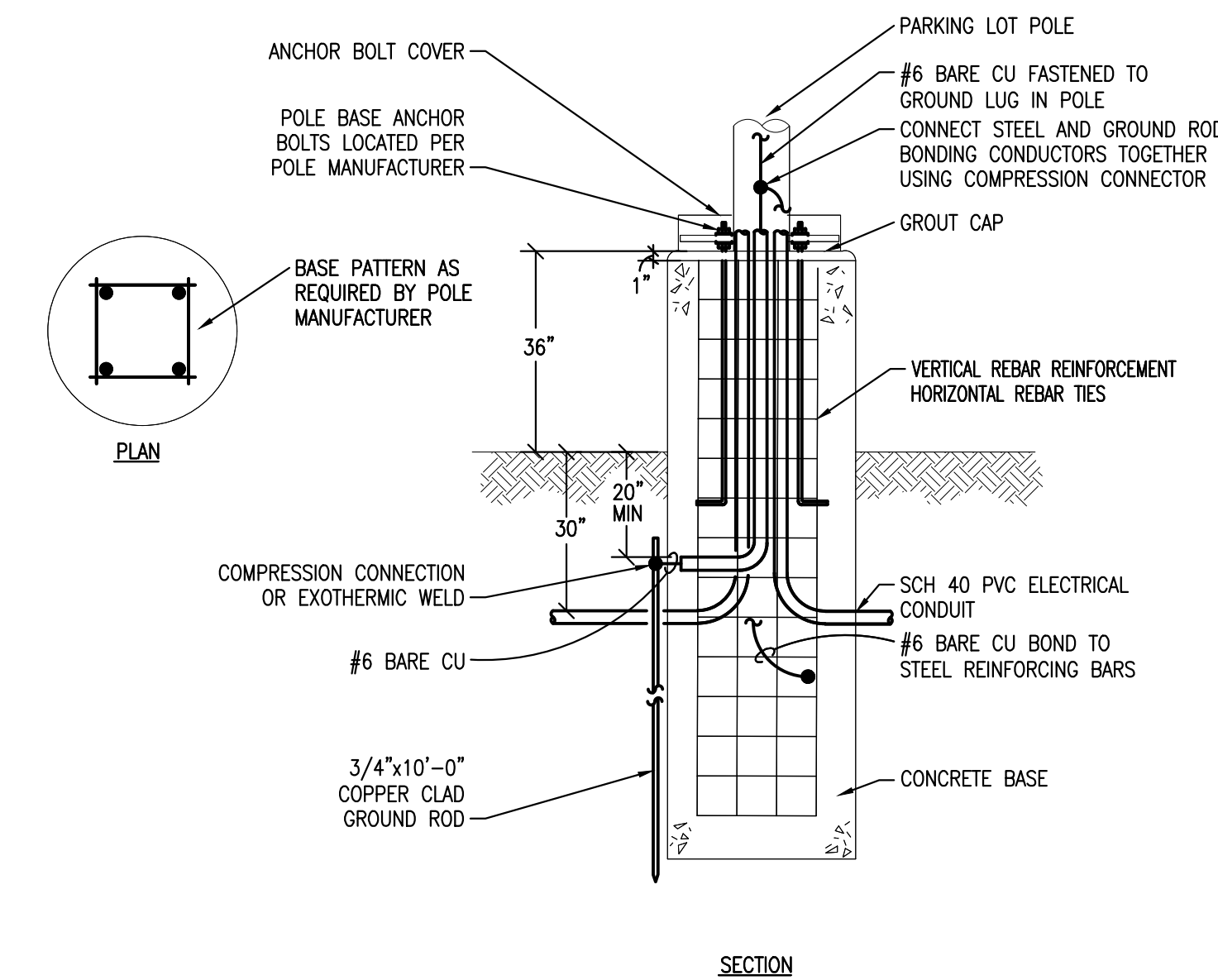


SHEET NOTES

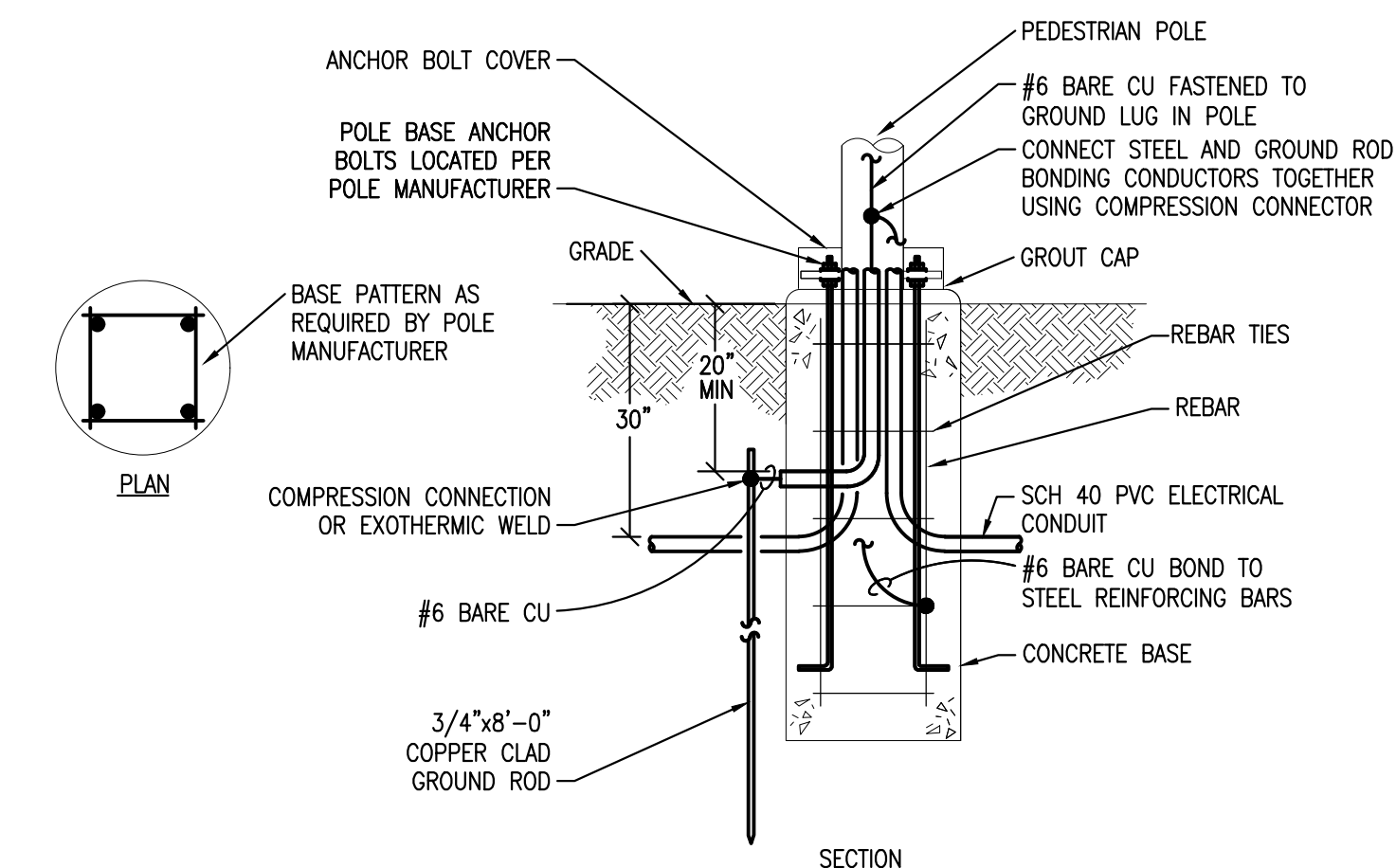
1. LIGHT LINE WEIGHT INDICATES EXISTING. HEAVY LINE WEIGHT INDICATES NEW CONSTRUCTION.
2. INCLUDE ALL COST, LABOR, MATERIAL, SERVICE ENTRANCE INSTALLATION, CONNECTION, FINAL TERMINATION, START-UP, TESTING, PERMIT FEES, AND ALL OTHER APPLICABLE FEES.
3. LOCATE ALL EXISTING UNDERGROUND UTILITIES PRIOR TO TRENCHING AND INSTALL ALL UNDERGROUND RACEWAYS IN MOST FEASIBLE LOCATION.
4. COORDINATE ELECTRICAL EQUIPMENT LOCATIONS AND UNDERGROUND ROUTING WITH UTILITIES AND OTHER TRADES PRIOR TO TRENCHING AND SETTING EQUIPMENT PADS.
5. PATCH AND PAINT ANY DAMAGED SURFACES DUE TO DEMOLITION AND CONSTRUCTION TO MATCH EXISTING CONDITIONS.
6. PROVIDE ALL TRENCHING, BACKFILL AND SAW CUTTING. RETURN ALL LANDSCAPING, PAVEMENT, AND FLATWORK BACK TO ITS ORIGINAL CONDITION AT NO ADDITIONAL COST TO THE OWNER.
7. PROVIDE BOLLARDS AS REQUIRED TO PROTECT EQUIPMENT FROM DAMAGE.
8. REFER TO CIVIL AND LANDSCAPE PLANS FOR ADDITIONAL INFORMATION.

KEY NOTES

1. PROVIDE DRIVE-THROUGH PROTECTION BOLLARD AT LOCATION(S) SHOWN. COORDINATE TRAFFIC RATING AND INSTALLATION REQUIREMENTS WITH A STRUCTURAL ENGINEER PRIOR TO ROUGH-IN.



2. PARKING LOT POLE BASE DETAIL
SCALE: NONE



3. PEDESTRIAN POLE BASE DETAIL
SCALE: NONE

1. ELECTRICAL SITE PLAN
SCALE: 1" = 30'-0"



BOULDER ASSOCIATES

1426 PEARL STREET, SUITE 300
BOULDER, COLORADO 80302
303.499.7795

CENTURA
PARKER NHC

PARKER POINTE SUBDIVISION
LOTS 7,8,9 AND 10
PARKER, CO 80134

SUBMITTALS

DESCRIPTION DATE
1ST SUBMITTAL 07/28/2023

DATE
07/28/2023

PARKER PROJECT NUMBER
SP22-XXX

SHEET TITLE
ELECTRICAL SITE PLAN

DRAWING NUMBER

12 OF 14

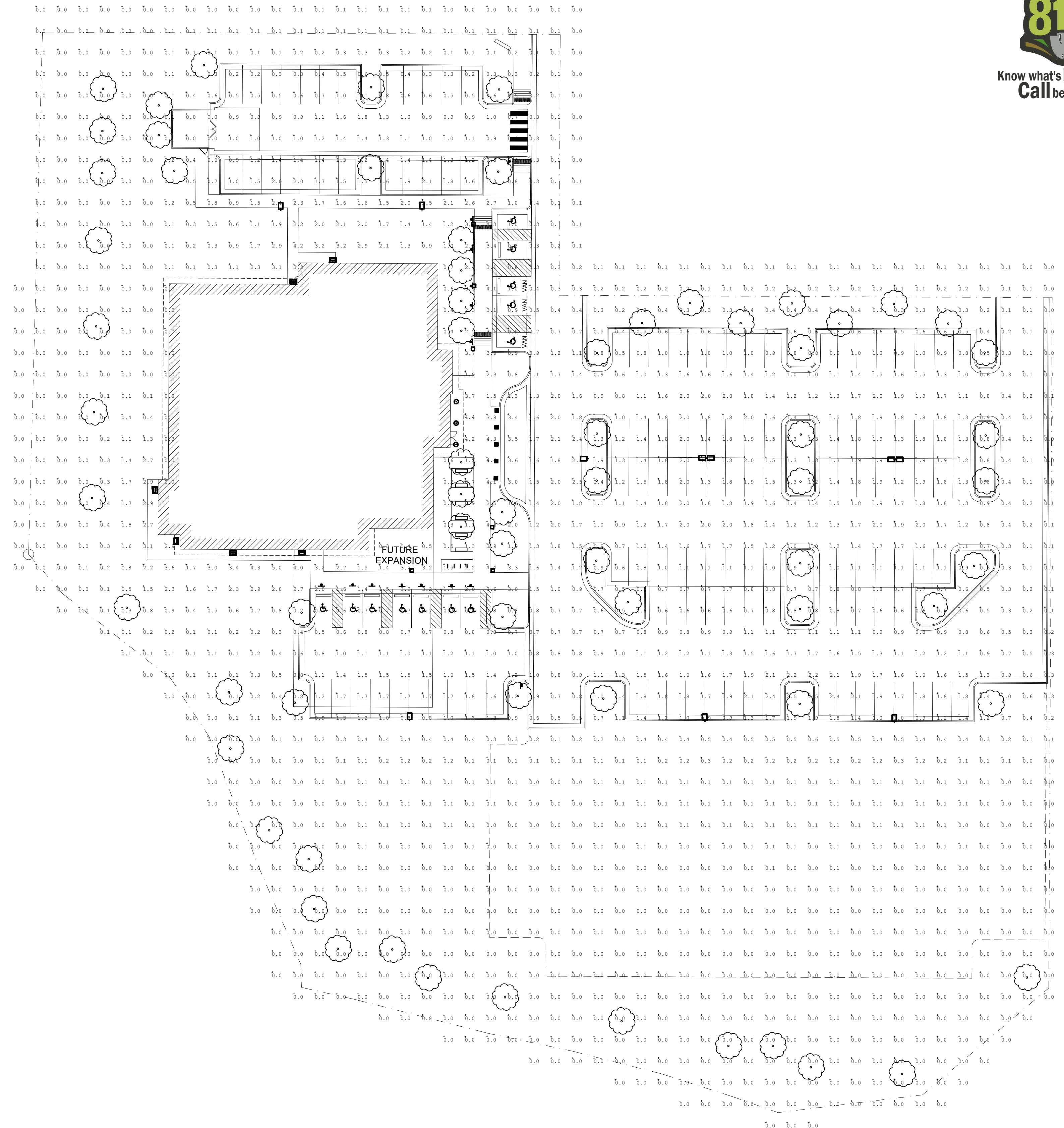
PARKER POINTE SUBDIVISION FILING NO. 2 - LOT 1A

SITE DEVELOPMENT PLAN

A PARCEL OF LAND SITUATED IN THE NORTHEAST 1/4 OF SECTION 3, TOWNSHIP 7 SOUTH, RANGE 66 WEST OF THE 6TH PRINCIPAL MERIDIAN, COUNTY OF DOUGLAS, STATE OF COLORADO.



Know what's below.
Call before you dig.



SHEET NOTES

1. ALL EXTERIOR LUMINAIRES SHALL BE ROUTED THROUGH LIGHTING CONTROL SYSTEM. OUTDOOR LIGHTING SHALL BE CONTROLLED BY AUTOMATIC SWITCHES THAT TURN OFF LIGHTS DURING PERIODS WHEN DAYLIGHT EXCEEDS MAXIMUM ALLOWABLE ILLUMINANCE.
2. EXTERIOR LIGHTING SHALL COMPLY WITH LOCAL LIGHTING CURFEW STANDARDS. ALL EXTERIOR FIXTURES, ASIDE FROM 30% OF TOTAL, SHALL BE EXTINGUISHED DURING THE TIME PERIOD BETWEEN 1-HOUR BEFORE AND AFTER BUSINESS HOURS.

PHOTOMETRIC RESULTS

	AVERAGE	MAX	MIN	AVG/MIN	MAX/MIN
PARKING LOT (40,000 S.F.)	1.3	3.6	0.4	3.3	9.0
ACCESSIBLE PATH	2.9	4.6	1.4	2.0	4.3

NUMBERS LISTED ABOVE ARE MEASURED IN FOOTCANDLES



BOULDER ASSOCIATES

1426 PEARL STREET, SUITE 300
BOULDER, COLORADO 80302
303.499.7795

CENTURA
PARKER NHC
PARKER POINTE SUBDIVISION
LOTS 7, 8, 9 AND 10
PARKER, CO 80134

SUBMITTALS

DESCRIPTION DATE
1ST SUBMITTAL 07/28/2023

DATE 07/28/2023

PARKER PROJECT NUMBER
SP22-XXX

SHEET TITLE
LIGHTING
PHOTOMETRICS
PLAN

DRAWING NUMBER

13 OF 14



PARKER POINTE SUBDIVISION FILING NO. 2 - LOT 1A

SITE DEVELOPMENT PLAN

A PARCEL OF LAND SITUATED IN THE NORTHEAST 1/4 OF SECTION 3, TOWNSHIP 7 SOUTH, RANGE 66 WEST OF THE 6TH PRINCIPAL MERIDIAN, COUNTY OF DOUGLAS, STATE OF COLORADO.

rescolit
LITEFRAME 6" ROUND DOWNLIGHT

DATE: LOCATION:
TYPE: PROJECT:
CATALOG #:

LFR-6RD
LITEFRAME 6" ROUND DOWNLIGHT

FEATURES

- 6" LED downlight delivering 1000-8000 lumens
- Direct install from below ceiling for New Construction or Remodel applications
- Optional housing accessories available
- Five beam distributions
- 2700K-5000K, 80- and 90- CRI (2 SDCM)
- Dimming protocols include 0-10V, Phase (Forward/Reverse), DALI, DMX, and Luton EcoSystem
- NX Lighting Controls wired and wireless controls compatibility available

CONTROL TECHNOLOGY

NX LIGHTING CONTROLS

SPECIFICATIONS

CONSTRUCTION

- Standard Fixture Module designed for Non-IC Direct Install construction
- Optional Non-IC frame or IC housing available with pre-installed bar hangers
- Die cast aluminum fixture module support ring with spring steel clips for secure mounting to ceiling
- Driver (also can be installed and accessed from below the ceiling as direct install or easily snap on to optional housing frame/enclosure)
- Light Engine connections use premium rated (CMT) cable

OPTICS

- High purity spun aluminum reflector, well-flanged
- 57° visual cutoff to source image and 31° cutoff to source
- Spreader or Beam Spreader annular or White painted cone reflector finish/colors
- Painted flange options in White or Black
- Optional clear lens trim for wet location applications
- Wide Angle and Soft Focus lens filter/clip accessories available

ELECTRICAL

- Chip-on-board LED with 2 SDCM
- Multiple CCTs: 80 or 90+ CRI
- Long LED life: L80 at >60,000 hours (TM-21)
- Universal voltage: 120-277V driver, 347V optional
- UL Class 2, inherent short circuit and overload protection
- Flicker-free dimming options in a wide range of protocols from 1% to >43.1% performance
- 0-10V, Phase (Forward/Reverse), DALI, DMX, and Luton EcoSystem options
- Integral and remote emergency battery options available

CERTIFICATIONS

- ICESus certified to UL 1598
- For H80L, Marked spacing required 36" fixture center to center; 18" fixture center to backing member; 0.5" above fixture
- Suitable for wet locations, covered ceiling when used with CL lens trim; all other configurations, suitable for damp locations
- CL Lens option: IP65 rated (room entry when properly installed per installation instructions)
- ENEC/EMC Certified under UL 504 standard for emergency lighting and power equipment
- Approved for E (4 in 4 out) No. 12AWG conductors rated for 90°C through wiring enclosure. (For list and additional information, visit www.enetlighting.gov)

WARRANTY

- 5 year warranty

KEY DATA

Lumen Range	1000-8000
Wattage Range	6-71
Efficacy Range (LPW)	118-143
Reported Life (Hours)	190 / 90,000
Input Current (mA)	48-592 (10V)

Based on Specifier, SDR, RL, RL1

currentlighting.com/prescolite Page 1 of 13
© 2022 rescolit, Inc. All rights reserved. Information and specifications subject to change without notice. All values are design or typical values unless otherwise indicated. Dimensions are in inches unless otherwise noted.

Building element - asymmetric wide beam - single

Application: Light building element with asymmetric wide beam light distribution. Light building elements are luminous design features for public areas. They are usually suited for delineating and structuring interior and exterior spaces such as landscape areas, plazas, building entrances and exits.

Materials: Marine grade, copper free (0.3% copper content) A360.0 aluminum alloy. Class A toughened safety glass with optical texture. Extruded aluminum pole shaft. Pure anodized aluminum reflector. High temperature silicone gasket. Galvanized steel anchorage.

NRTL listed to North American Standards, suitable for wet locations. Protection class: IP 65. Effective projection area: 9.7 sq. ft. Weight: 72 lbs.

Electrical: Operating voltage: 120-277V AC. Minimum start temperature: -20° C. LED module wattage: 15.4 W. System wattage: 19.3 W. Controllability: 0-10V dimmable. Color rendering index: Ra > 80. Luminaire lumens: 2500 lumens (4000K). LED service life (L70): 60,000 hours.

LED color temperature: 4000K - Product number = K4. 3000K - Product number = K30. 2700K - Product number = K27. BEGA can supply you with suitable LED replacement modules for up to 20 years after the purchase of LED luminaires - see website for details.

Finish: All BEGA standard finishes are matte, textured powder coat with minimum 3 mil thickness. BEGA Undercoat® finish, a fluoropolymer technology, provides superior fade protection in Black, Bronze, and Silver. BEGA standard White, and custom finishes are also available. Available colors: Black (BLK), White (WHT), Bronze (BRZ), Silver (SLV), CUS.

Available options: 71 1400 Direct burial anchorage. FSC: Fixing.

BEGA 1000 BEGA Way, Carpinteria, CA 93013 (805) 684-0533 info@bega-us.com

DATE: LOCATION:
TYPE: PROJECT:
CATALOG #:

VIPER Area/Site
VIPER LUMINAIRE

FEATURES

- Low profile LED area/site luminaire with a variety of LED distributions for lighting applications such as auto dealerships, retail, commercial, and campus parking lots
- Featuring two different optical technologies, Strike and Micro Strike Optics, which provide the best distribution patterns for retrofit or new construction
- Rated for high vibration applications including bridges and overpasses. All sizes are rated for 1.5G
- Control options including photo control, occupancy sensing, NX Lighting Controls™, WISCAPE and 7-Pin with networked controls
- New customizable lumen output feature allows for the wattage and lumen output to be customized to the facility to meet whatever specification requirements may arise
- Field interchangeable mounting provides additional flexibility after the fixture has shipped

CONTROL TECHNOLOGY

NX LIGHTING CONTROLS

CONSTRUCTION

- Die-cast housing with hidden vertical heat fins are optimal for heat dissipation while keeping a clean smooth outer surface
- Corrosion resistant, die-cast aluminum housing with 1000 hour powder coat paint finish
- External hardware is corrosion resistant

ELECTRICAL

- Universal 120-277 VAC or 347-480 VAC input voltage, 50/60 Hz
- Ambient operating temperature -40°C to 40°C
- Drivers have greater than 90% power factor and less than 0.2% THD
- LED drivers have output power over-voltage, over current protection and short circuit protection with auto recovery
- Field replaceable surge protection device (SPD) per IEEE C62.41.2 Category C High Surge Location Category C3. Automatically labels fixture wiring for protection when device is compromised
- Dual Driver option provides 2 drivers within luminaire but only one set of leads extending from the luminaire. Both options can be wired independently as two sets of leads are extended from the luminaire. Both options cannot be combined
- One-piece silicone gasket ensures a weathertight seal
- Zero on-light at 0 degrees of tilt
- Field replaceable optics

INSTALLATION

- Mounting patterns for each arm can be found on page 11
- Optional universal mounting block for ease of installation and removal
- Available as an option (A200) or accessory for square and round poles
- All mounting hardware included

CERTIFICATIONS

- UL CRP (DesignLights Consortium Qualified) with both Premium and Standard Qualification
- ENEC/EMC Certified under UL 504 standard for emergency lighting and power equipment
- Listed to UL 1598 and CSA C22.2#250.0-24 for wet locations and 40°C ambient temperature
- 1.5 G rated for ANSI C136.31 high vibration applications
- Feature is IP65 rated
- Meets ICA recommendations using 3K CCT configuration at 0 degrees of tilt
- This product qualifies as a "designated country construction material" per FAR 25.225-11 Buy American-Construction Materials and Trade Agreements effective 04/23/2020
- VARIABILITY: 5 year warranty

KEY DATA

Lumen Range	5,000-80,000
Wattage Range	36-600
Efficacy Range (LPW)	92-155
Weight lbs. (kg)	13.7-30.9 (6.2-13.9)

currentlighting.com/beacon Page 1 of 13
© 2022 rescolit, Inc. All rights reserved. Information and specifications subject to change without notice. All values are design or typical values unless otherwise indicated. Dimensions are in inches unless otherwise noted.

EXTERIOR LUMINAIRE SCHEDULE											
										Version 1107	
KEY	DESCRIPTION	FINISH	MOUNTING	RATINGS	B-U-G	LUMENS	MANUFACTURER	SPECIFICATION (NOTE 1)			
								CATALOG NUMBER	VOLTS	VA	NOTES
BA	PEDESTRIAN POST FIXTURE SINGLE HEAD TYPE III	BRONZE	PEDESTRIAN POLE	B1-U0-G1	2,520	BEGA	84273-K3-BRZ	120	19		
BB	PEDESTRIAN BOLLARD HEAD	BRONZE	BOLLARD	B1-U0-G1	709	BEGA	84691-K3-BRZ 84016-BRZ	120	30	4	
DA	6" DOWNLIGHT	BRONZE	RECESSED	N/A	1,010	PRESCOLITE	LFR-6RD-M-10L30K8-WD-DM1	120	12		
PA1-2	POLE MOUNTED PARKING LIGHT SINGLE HEAD TYPE II	DARK BRONZE GLOSS SMOOTH	PARKING LOT POLE	B2-U0-G2	9,244	BEACON	VP-MICROSTRIKE-1-160L-75-3K7-2-UNV-A-DBS	120	72	2	
PA1-3	POLE MOUNTED PARKING LIGHT SINGLE HEAD TYPE III	DARK BRONZE GLOSS SMOOTH	PARKING LOT POLE	B2-U0-G2	9,340	BEACON	VP-MICROSTRIKE-1-160L-75-3K7-2-UNV-A-DBS	120	72	2	
PA1-4	POLE MOUNTED PARKING LIGHT SINGLE HEAD TYPE IV	DARK BRONZE GLOSS SMOOTH	PARKING LOT POLE	B2-U0-G2	8,305	BEACON	VP-MICROSTRIKE-1-160L-75-3K7-2-UNV-A-DBS	120	72	2	
PA2-3	POLE MOUNTED PARKING LIGHT DUAL HEAD TYPE III	DARK BRONZE GLOSS SMOOTH	PARKING LOT POLE	B2-U0-G2	9,340	BEACON	VP-MICROSTRIKE-1-160L-75-3K7-2-UNV-A-DBS	120	144	2	
PB1-3	POLE MOUNTED PARKING LIGHT SINGLE HEAD TYPE III	DARK BRONZE GLOSS SMOOTH	PARKING LOT POLE	B2-U0-G2	9,340	BEACON	VP-MICROSTRIKE-1-160L-75-3K7-2-UNV-A-DBS	120	72	2, 3	
WA	WALL PEDESTRIAN FIXTURE	BRONZE	WALL SURFACE	B1-U0-G1	3,587	BEACON	RWL1-48L-25-3K7-3-UNV-XXX	120	28		

- LUMINAIRE SCHEDULE NOTES:
- UNLESS INDICATED OTHERWISE, REFER TO THE SPECIFICATIONS FOR ALL LAMPS AND BALLASTS. COORDINATE THE VOLTAGE AND MOUNTING CONFIGURATION WITH THE PLANS.
 - SQUARE STRAIGHT STEEL POLE MOUNTED ON 3'-0" CONCRETE BASE. FIXTURE HEAD SHALL BE MOUNTED AT 25'-0" AFG.
 - POLE SHALL BE SIZED AND DRILLED FOR TWO HEADS MOUNTED AT 180DEG. ONLY (1) HEAD TO BE ORDERED FOR THIS PROJECT. HOLES TO BE DRILLED AND PLUGGED FOR SECOND FIXTURE HEAD THAT WILL BE ORDERED IN FUTURE PROJECT.
 - MOUNT ON DRIVE-THROUGH PROTECTION BOLLARD TUBE. COORDINATE WITH STRUCTURAL ENGINEER PRIOR TO ROUGH-IN.

2 TYPE DA LUMINAIRE

SCALE: NONE

BEGA LED system bollard - luminaire head with shielded 360° light distribution

Application: BEGA LED system bollard luminaire head with shielded 360° light distribution. BEGA LED system bollard heads are designed for easy attachment to system bollard tubes using an interlocking mechanism. An accompanying bollard tube must be selected for proper installation, see list of compatible tube options.

Materials: Luminaire housing and guard constructed of die-cast marine grade, copper free (0.3% copper content) A360.0 aluminum alloy. Borosilicate glass. High temperature silicone gasket. Mechanically captive stainless steel fasteners. Interlocking system constructed of stainless steel.

NRTL listed to North American Standards, suitable for wet locations. Protection class: IP 65. Weight: 13.0 lbs.

Electrical: Operating voltage: 120-277V AC. Minimum start temperature: 40° C. LED module wattage: 25.2 W. System wattage: 32.3 W. Controllability: 0-10V, TRIAC, and ELV dimmable. Color rendering index: Ra > 80. Luminaire lumens: 715 lumens (3000K). Lifetime at Ta = 15° C: 168,000 h (L70). Lifetime at Ta = 40° C: 90,000 h (L70).

LED color temperature: 4000K - Product number = K4. 3000K - Product number = K30. 2700K - Product number = K27. BEGA can supply you with suitable LED replacement modules for up to 20 years after the purchase of LED luminaires - see website for details.

Finish: All BEGA standard finishes are matte, textured powder coat with minimum 3 mil thickness. Available colors: Black (BLK), White (WHT), Bronze (BRZ), Silver (SLV), CUS.

Compatible bollard tube (select one): 84 001 Without components - low. 84 003 Without components - high. 84 010 Passive infrared motion sensor. 84 004 GFCI convenience outlet. 84 016 Impact bollard tube.

See individual accessory spec sheet for details.

BEGA 1000 BEGA Way, Carpinteria, CA 93013 (805) 684-0533 info@bega-us.com

DATE: LOCATION:
TYPE: PROJECT:
CATALOG #:

RATIO Wall
RWL1RWL2 LED WALLPACK

FEATURES

- Low profile LED wall luminaire with a variety of LED distributions for lighting applications such as retail, commercial and industrial building interiors
- Featuring Micro Strike Optics which maximizes target zone illumination with minimal losses at the face-side, reducing light trespass issues
- Visual comfort standard
- Control options including photo control, occupancy sensing, NX Distributed Intelligence™, WISCAPE and 7-Pin with networked controls
- Battery backup options available for emergency code compliance
- Quick-mount adapter allows easy installation/maintenance
- 347V and 480V versions for industrial applications and Canada

CONTROL TECHNOLOGY

NX LIGHTING CONTROLS

CONSTRUCTION

- Die-cast housing with hidden vertical heat fins that are optimal for heat dissipation while keeping a clean smooth outer surface
- Corrosion resistant, die-cast aluminum housing with powder coat paint finish
- Power part finish provides durability in outdoor environments. Tested to meet 1000 hour salt spray rating

ELECTRICAL

- 48 or 160 mWpower LEDs
- 3000K, 4000K or 5000K (TM CR100/CR1) CCT
- Zero-uglight distributions
- LED optics provide E85 Sp8, I8 and IV distributions. Type I only available in RWL2 configurations

INSTALLATION

- Quick-mount adapter provides easy installation on 1/2" or 3/4" junction boxes (4" square junction box)
- Designed for direct box mount
- Integral back box standard for RWL1 only
- Integral back box standard with Dual Driver, Dual Phase, and 160 mWpower LEDs
- Integral Battery Backup provides emergency lighting for the required 90 minute path of egress
- Driver Backside and IP65

CERTIFICATIONS

- UL CRP (DesignLights Consortium Qualified) with both Premium and Standard Qualification
- ENEC/EMC Certified under UL 504 standard for emergency lighting and power equipment
- Listed to UL 1598 and CSA C22.2#250.0-24 for wet locations and 40°C ambient temperature
- 1.5 G rated for ANSI C136.31 high vibration applications
- Feature is IP65 rated
- Meets ICA recommendations using 3K CCT configuration at 0 degrees of tilt
- This product qualifies as a "designated country construction material" per FAR 25.225-11 Buy American-Construction Materials and Trade Agreements effective 04/23/2020
- VARIABILITY: 5 year warranty

KEY DATA

Lumen Range	1,300-18,800
Wattage Range	10-150
Efficacy Range (LPW)	119-148
Weights lbs. (kg)	6.5/14.5 (2.9/6.5)

currentlighting.com/beacon Page 1 of 7
© 2022 rescolit, Inc. All rights reserved. Information and specifications subject to change without notice. All values are design or typical values unless otherwise indicated. Dimensions are in inches unless otherwise noted.

5 TYPE BB LUMINAIRE

SCALE: NONE

1 TYPE BA LUMINAIRE

SCALE: NONE

Building element - asymmetric wide beam - single

Application: Light building element with asymmetric wide beam light distribution. Light building elements are luminous design features for public areas. They are usually suited for delineating and structuring interior and exterior spaces such as landscape areas, plazas, building entrances and exits.

Materials: Marine grade, copper free (0.3% copper content) A360.0 aluminum alloy. Class A toughened safety glass with optical texture. Extruded aluminum pole shaft. Pure anodized aluminum reflector. High temperature silicone gasket. Galvanized steel anchorage.

NRTL listed to North American Standards, suitable for wet locations. Protection class: IP 65. Effective projection area: 9.7 sq. ft. Weight: 72 lbs.

Electrical: Operating voltage: 120-277V AC. Minimum start temperature: -20° C. LED module wattage: 15.4 W. System wattage: 19.3 W. Controllability: 0-10V dimmable. Color rendering index: Ra > 80. Luminaire lumens: 2500 lumens (4000K). LED service life (L70): 60,000 hours.

LED color temperature: 4000K - Product number = K4. 3000K - Product number = K30. 2700K - Product number = K27. BEGA can supply you with suitable LED replacement modules for up to 20 years after the purchase of LED luminaires - see website for details.

Finish: All BEGA standard finishes are matte, textured powder coat with minimum 3 mil thickness. BEGA Undercoat® finish, a fluoropolymer technology, provides superior fade protection in Black, Bronze, and Silver. BEGA standard White, and custom finishes are also available. Available colors: Black (BLK), White (WHT), Bronze (BRZ), Silver (SLV), CUS.

Available options: 71 1400 Direct burial anchorage. FSC: Fixing.

BEGA 1000 BEGA Way, Carpinteria, CA 93013 (805) 684-0533 info@bega-us.com

DATE: LOCATION:
TYPE: PROJECT:
CATALOG #:

RATIO Wall
RWL1RWL2 LED WALLPACK

FEATURES

- Low profile LED wall luminaire with a variety of LED distributions for lighting applications such as retail, commercial and industrial building interiors
- Featuring Micro Strike Optics which maximizes target zone illumination with minimal losses at the face-side, reducing light trespass issues
- Visual comfort standard
- Control options including photo control, occupancy sensing, NX Distributed Intelligence™, WISCAPE and 7-Pin with networked controls
- Battery backup options available for emergency code compliance
- Quick-mount adapter allows easy installation/maintenance
- 347V and 480V versions for industrial applications and Canada

CONTROL TECHNOLOGY

NX LIGHTING CONTROLS

CONSTRUCTION

- Die-cast housing with hidden vertical heat fins that are optimal for heat dissipation while keeping a clean smooth outer surface
- Corrosion resistant, die-cast aluminum housing with powder coat paint finish
- Power part finish provides durability in outdoor environments. Tested to meet 1000 hour salt spray rating

ELECTRICAL

- 48 or 160 mWpower LEDs
- 3000K, 4000K or 5000K (TM CR100/CR1) CCT
- Zero-uglight distributions
- LED optics provide E85 Sp8, I8 and IV distributions. Type I only available in RWL2 configurations

INSTALLATION

- Quick-mount adapter provides easy installation on 1/2" or 3/4" junction boxes (4" square junction box)
- Designed for direct box mount
- Integral back box standard for RWL1 only
- Integral back box standard with Dual Driver, Dual Phase, and 160 mWpower LEDs
- Integral Battery Backup provides emergency lighting for the required 90 minute path of egress
- Driver Backside and IP65

CERTIFICATIONS

- UL CRP (DesignLights Consortium Qualified) with both Premium and Standard Qualification
- ENEC/EMC Certified under UL 504 standard for emergency lighting and power equipment
- Listed to UL 1598 and CSA C22.2#250.0-24 for wet locations and 40°C ambient temperature
- 1.5 G rated for ANSI C136.31 high vibration applications
- Feature is IP65 rated
- Meets ICA recommendations using 3K CCT configuration at 0 degrees of tilt
- This product qualifies as a "designated country construction material" per FAR 25.225-11 Buy American-Construction Materials and Trade Agreements effective 04/23/2020
- VARIABILITY: 5 year warranty

KEY DATA

Lumen Range	1,300-18,800
Wattage Range	10-150
Efficacy Range (LPW)	119-148
Weights lbs. (kg)	6.5/14.5 (2.9/6.5)

currentlighting.com/beacon Page 1 of 7
© 2022 rescolit, Inc. All rights reserved. Information and specifications subject to change without notice. All values are design or typical values unless otherwise indicated. Dimensions are in inches unless otherwise noted.

4 TYPE PXX-X LUMINAIRES

SCALE: NONE

3 TYPE WA LUMINAIRE

SCALE: NONE



1426 PEARL STREET, SUITE 300
BOULDER, COLORADO 80302
303.499.7795

CENTURA PARKER NHC
PARKER POINTE SUBDIVISION
LOTS 7.8.9 AND 10
PARKER, CO 80134

SUBMITTALS
DESCRIPTION DATE
1ST SUBMITTAL 07/28/2023

DATE: 07/28/2023
PARKER PROJECT NUMBER: SP22-XXX

SHEET TITLE: LIGHTING CUT SHEETS & LUMINAIRE SCHEDULE
DRAWING NUMBER: 14 OF 14