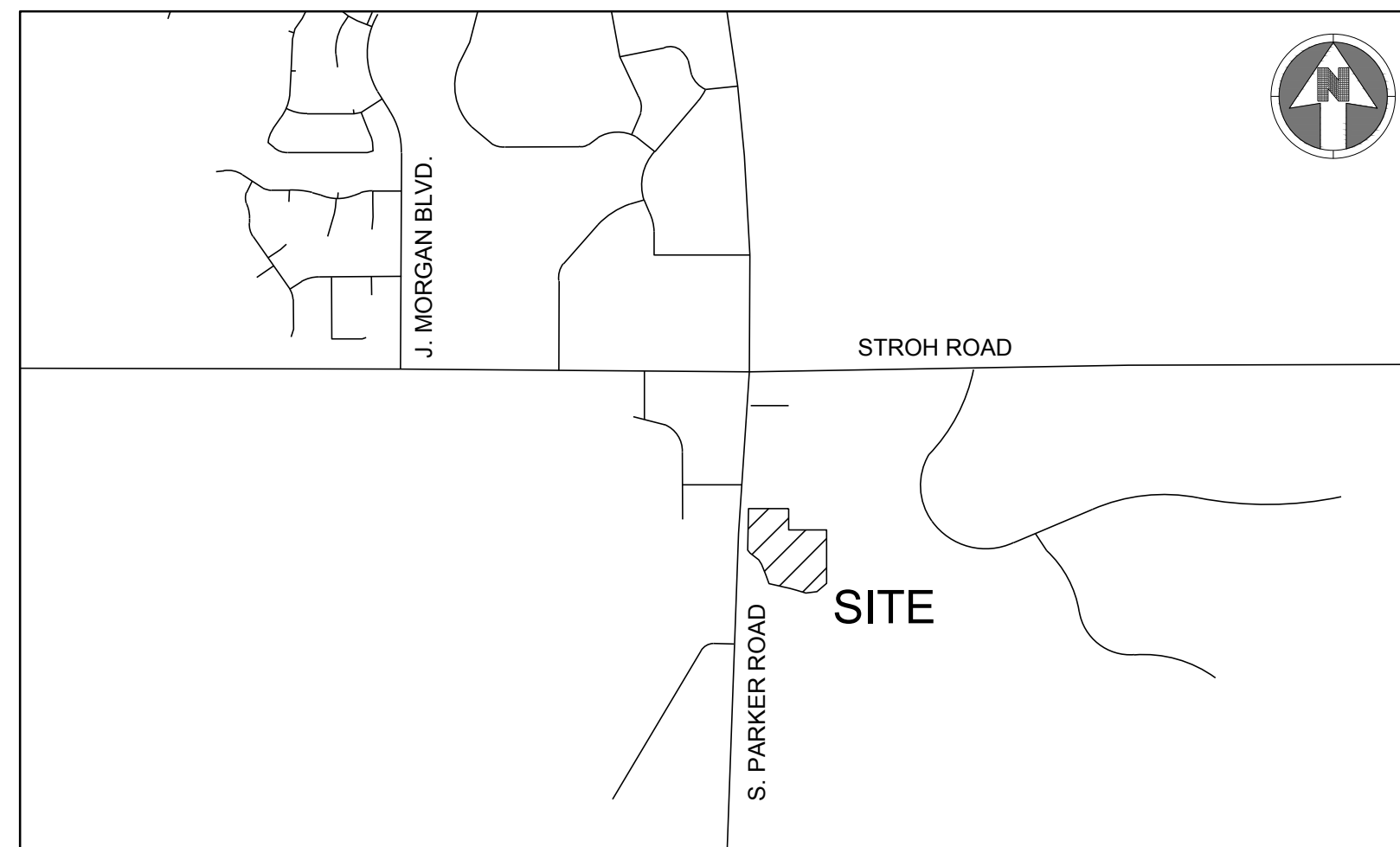


WATER AND SANITARY CONSTRUCTION PLANS

FOR

CENTURA PARKER NHC

LOTS 6 THROUGH 14, INCLUSIVE, PARKER POINTE SUBDIVISION FILING NO. 1, SITUATED IN THE NORTHEAST 1/4 OF SECTION 3' TOWNSHIP 7 SOUTH, RANGE 66 WEST OF THE 6TH PRINCIPAL MERIDIAN, COUNTY OF DOUGLAS, STATE OF COLORADO.



VICINITY MAP

SCALE: 1"=1,000'

Sheet List Table	
Sheet Number	Sheet Title
C-500	WATER AND SANITARY COVER SHEET
C-501	WATER AND SANITARY NOTES AND LEGEND
C-511	UTILITY PLAN
C-551	WATER AND SANITARY DETAILS
C-552	WATER AND SANITARY DETAILS

MATERIALS LIST	
ITEM	QUANTITY
6" DIP	158 LF
6" PVC	16 LF
2" TYPE K COOPER	113 LF
8" GATE VALVE	2
6" GATE VALVE	3
2" GATE VALVE	1
90° BEND	1
12"X6" TEE	3
2" WET TAP	1
FIRE HYDRANT	2
CLEANOUT	1

FIRE FLOW BLOCK

TOTAL FIRE FLOW REQUIRED FOR THIS SITE IS 1875 GPM MINIMUM @ 20 PSI RESIDUAL PRESSURE
 THIS FLOW MUST BE PROVIDED FROM A MINIMUM OF 2 FIRE HYDRANTS INDIVIDUALLY. EACH FIRE HYDRANT MUST SUPPLY 1500 GPM MINIMUM @ 20 PSI RESIDUAL PRESSURE

CODE USED FOR ANALYSIS: 2015 INTERNATIONAL FIRE CODE AND 2015 INTERNATIONAL BUILDING CODE

OCCUPANCY GROUPS:
B

CONSTRUCTION TYPE: 2B

FIRE FLOW CALCULATION AREA: 30,120 SF
 TOTAL BUILDING AREA: 30,120 SF

BUILDING IS TO BE CONSTRUCTED WITH AUTOMATED FIRE SPRINKLER SYSTEM (NFPA 13) SO FIRE FLOW REQUIREMENT HAS BEEN REDUCED BY 50%.

BASIS OF BEARING:

BEARINGS ARE BASED ON THE NORTH LINE OF THE NE 1/4 SECTION 3, TOWNSHIP 7 SOUTH, RANGE 66 WEST, OF THE 6TH PRINCIPAL MERIDIAN BEARING S89°59'29"W AND BOUNDED BY THE MONUMENTS SHOWN HEREON.

BENCHMARK:

DOUGLAS COUNTY SURVEY CONTROL MONUMENT TT15A - 3" DIAMETER DOUGLAS COUNTY GIS ALUMINUM CAP AT THE NE CORNER OF STROH ROAD AND SOUTH PARKER ROAD (US HIGHWAY 83) ELEVATION: 5970.79 FEET (NAVD 1988 DATUM)

THE DISTRICT INSPECTOR MUST BE NOTIFIED AT LEAST 48 HOURS PRIOR TO START OF CONSTRUCTION. CALL PARKER WATER AND SANITATION DISTRICT AT 303-841-4627. THE DISTRICT WILL PROVIDE PERIODIC INSPECTIONS OF THE 24 HOUR NOTICE TO THE INSPECTOR IS REQUIRED FOR SCHEDULING INSPECTIONS. ANY WORK ACCOMPLISHED WITHOUT THE APPROVAL OF THE INSPECTOR WILL BE SUBJECT TO REJECTION.

REVIEWED FOR CONFORMANCE TO PARKER WATER AND SANITATION DISTRICT STANDARDS.

BY: _____
(DISTRICT REPRESENTATIVE)

DATE: _____

APPROVED FOR CONSTRUCTION:
PARKER WATER AND SANITATION DISTRICT

BY: _____
(DISTRICT ENGINEER)

DATE: _____

ALL FIRE HYDRANTS SHALL BE INSTALLED ACCORDING TO DISTRICT STANDARDS. THE NUMBER AND LOCATIONS OF THE FIRE HYDRANTS AS SHOWN ON THE OVERALL UTILITY PLAN ARE CORRECT AS SPECIFIED BY THE SOUTH METRO FIRE PROTECTION DISTRICT

(SIGNATURE OF FIRE CHIEF OR DESIGNATED REPRESENTATIVE)

DATE SIGNED _____

CONTACTS:

OWNER'S REPRESENTATIVE
 MEDDEVELOPMENT, LLC
 JOHN ALMEIDA
 10800 FARLEY, SUITE 380
 OVERLAND PARK, KS 66210
 816-564-2393

ENGINEER
 S.A. MIRO INC.
 JASON CARR
 4582 SOUTH ULSTER STREET
 SUITE 750 DENVER, CO 80237
 303-741-3737

SURVEYOR
 ENGINEERING SERVICE COMPANY
 CHARLES BECKSTROM
 14190 E. EVANS AVENUE
 AURORA, CO 80014
 303-337-1393

PUBLIC UTILITIES:

SOUTH METRO FIRE DISTRICT
 9195 E. MINERAL AVENUE
 CENTENNIAL, CO 80112
 P: (720) 989-2244

PARKER WATER & SANITATION DISTRICT
 18100 WOODMAN ROAD
 PARKER, CO 80134
 P: (303) 841-4627

TOWN OF PARKER
 20120 E. MAIN STREET
 PARKER, CO 80138
 P: (303) 840-9546



S.A. MIRO INC.
CONSULTING ENGINEERS

4582 South Ulster Street
Suite 750, Denver, CO 80237
303-741-3737
www.samiro.com



Know what's below.
Call before you dig.

DATE

DESCRIPTION

NO.

PROJECT: CENTURA PARKER NHC
PARKER, CO 80134

DRAWING TITLE: WATER AND SANITARY COVER SHEET

FILE PATH: C:\Users\ssm\ACCDocs\S.A. Miro, Inc\Civil\Jobs\22057 Parker NHC\05 CAD\Plans and Details\C500-WATR-COVR.dwg C500 - 7/26/2023

DESIGNED BY: SSM

DRAWN BY: SSM

CHECKED BY: JDC

MIRO JOB NO. 22057

DRAWING NUMBER:

C-500

