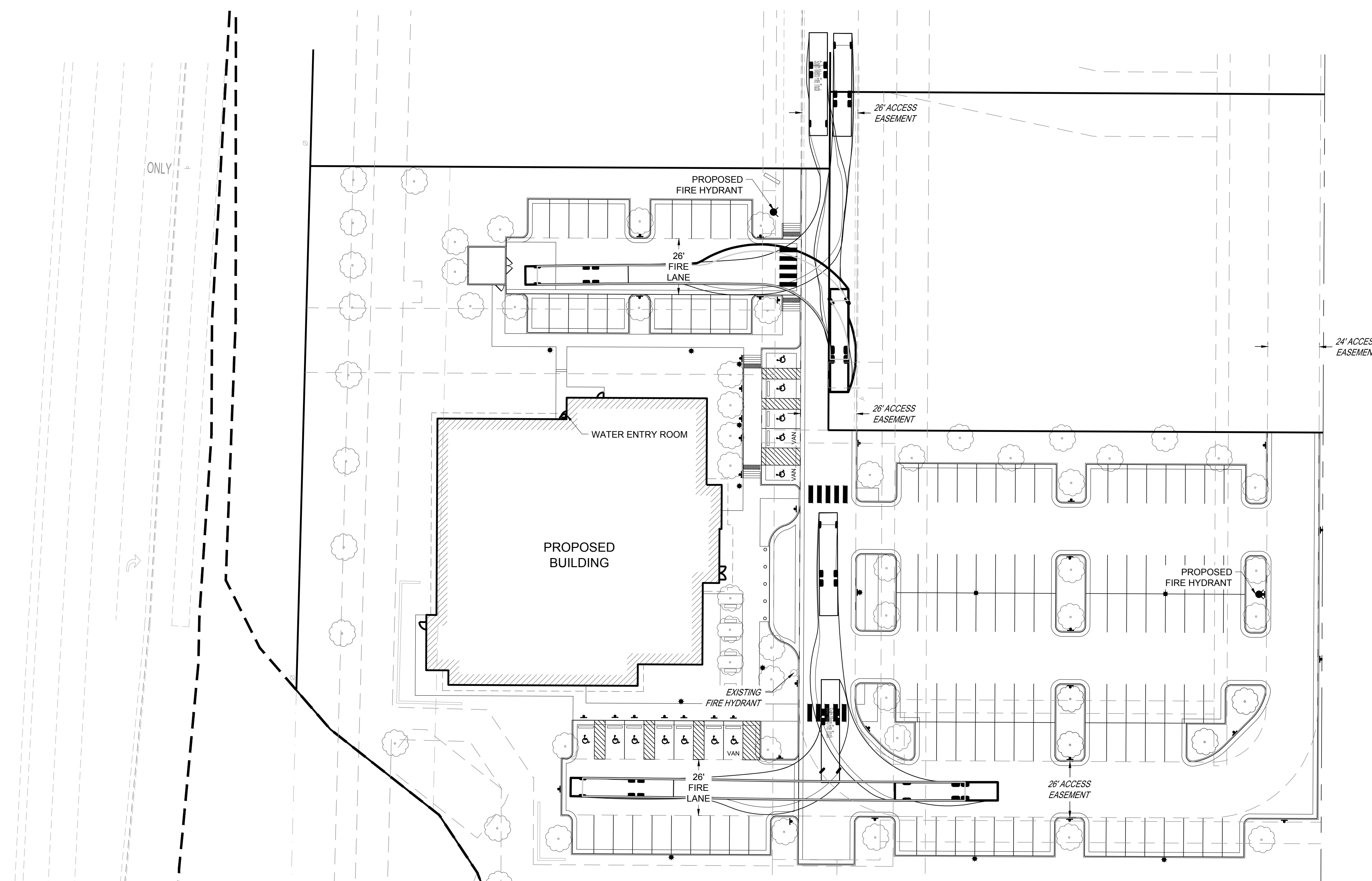


South Metro Fire Truck	
Overall Length	47.790ft
Overall Width	8.500ft
Overall Body Height	7.558ft
Min Body Ground Clearance	0.808ft
Track Width	8.500ft
Lock-to-lock time	5.00s
Curb to Curb Turning Radius	41.920ft



FIRE FLOW BLOCK

TOTAL FIRE FLOW REQUIRED FOR THIS SITE IS 1875 GPM MINIMUM @ 20 PSI RESIDUAL PRESSURE
 THIS FLOW MUST BE PROVIDED FROM A MINIMUM OF 2 FIRE HYDRANTS
 INDIVIDUALLY, EACH FIRE HYDRANT MUST SUPPLY 1500 GPM MINIMUM @ 20 PSI RESIDUAL PRESSURE

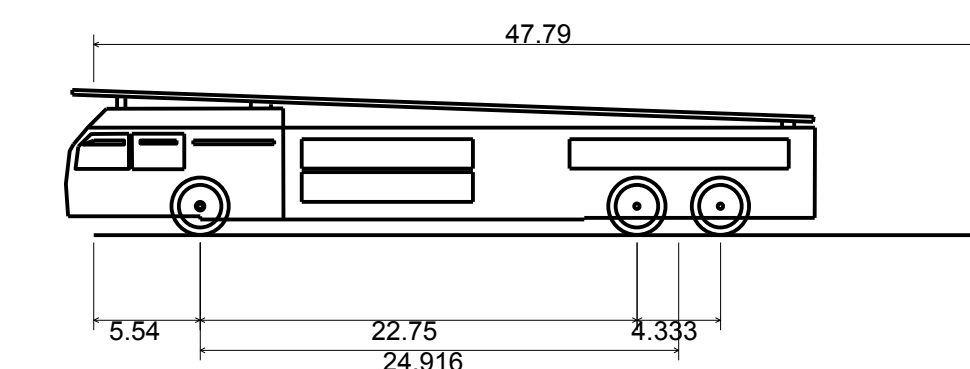
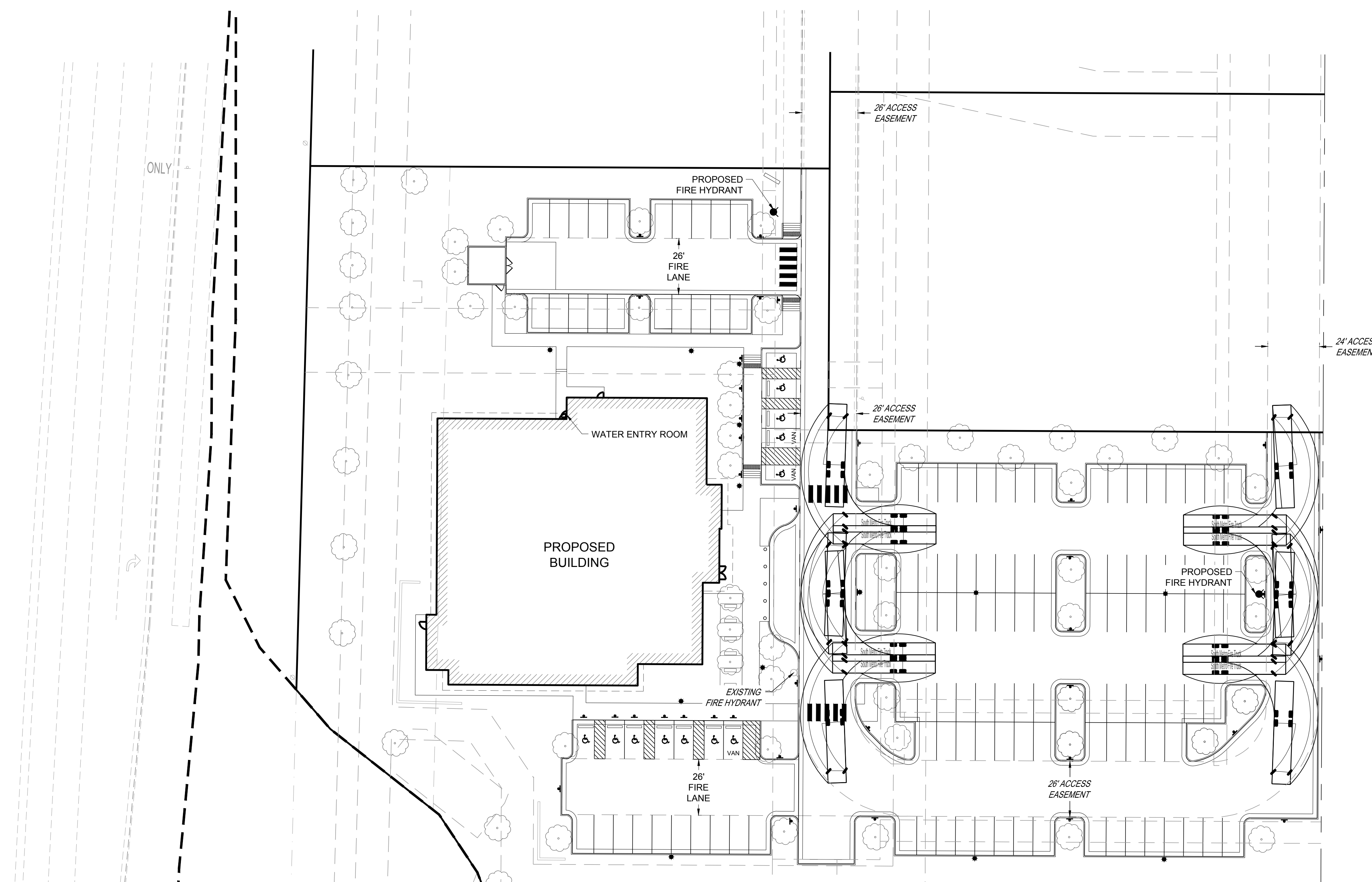
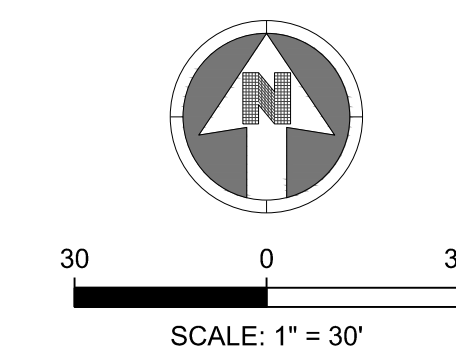
CODE USED FOR ANALYSIS: 2015 INTERNATIONAL FIRE CODE AND 2015 INTERNATIONAL BUILDING CODE

OCCUPANCY GROUPS: B

CONSTRUCTION TYPE: 2B

FIRE FLOW CALCULATION AREA: 29,788 SF
 TOTAL BUILDING AREA: 29,788 SF

BUILDING IS TO BE CONSTRUCTED WITH AUTOMATED FIRE SPRINKLER SYSTEM (NFPA 13) SO FIRE FLOW REQUIREMENT HAS BEEN REDUCED BY 50%.



South Metro Fire Truck	
Overall Length	47.790ft
Overall Width	8.500ft
Overall Body Height	7.558ft
Min Body Ground Clearance	0.808ft
Track Width	8.500ft
Lock-to-lock time	5.00s
Curb to Curb Turning Radius	41.920ft

FIRE FLOW BLOCK

TOTAL FIRE FLOW REQUIRED FOR THIS SITE IS 1875 GPM MINIMUM @ 20 PSI RESIDUAL PRESSURE
 THIS FLOW MUST BE PROVIDED FROM A MINIMUM OF 2 FIRE HYDRANTS
 INDIVIDUALLY, EACH FIRE HYDRANT MUST SUPPLY 1500 GPM MINIMUM @ 20 PSI RESIDUAL PRESSURE

CODE USED FOR ANALYSIS: 2015 INTERNATIONAL FIRE CODE AND 2015 INTERNATIONAL BUILDING CODE

OCCUPANCY GROUPS: B

CONSTRUCTION TYPE: 2B

FIRE FLOW CALCULATION AREA: 29,788 SF
 TOTAL BUILDING AREA: 29,788 SF

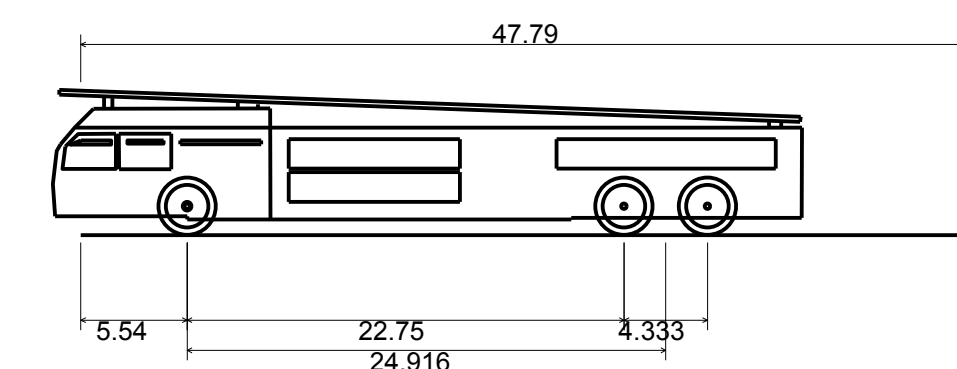
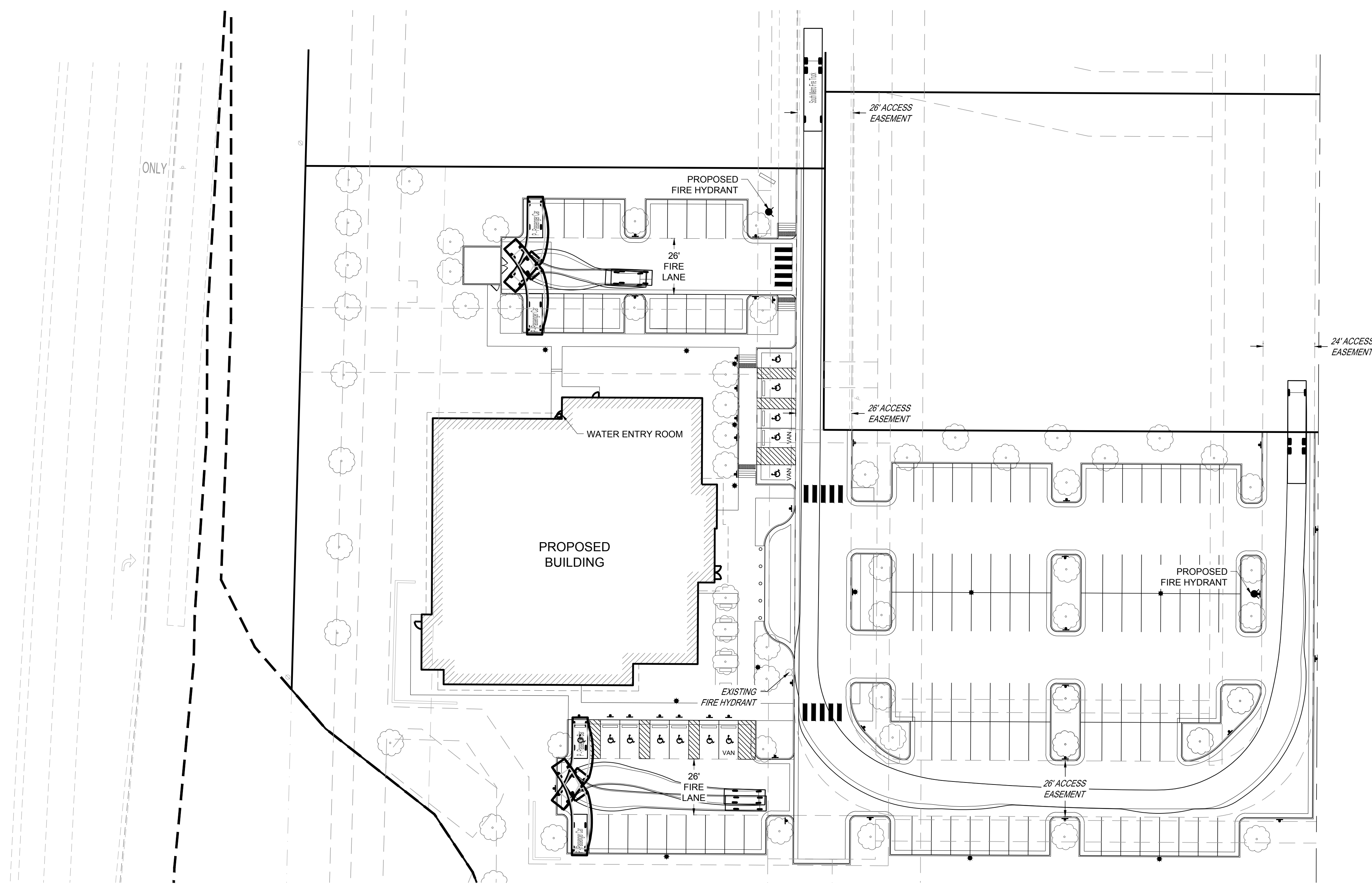
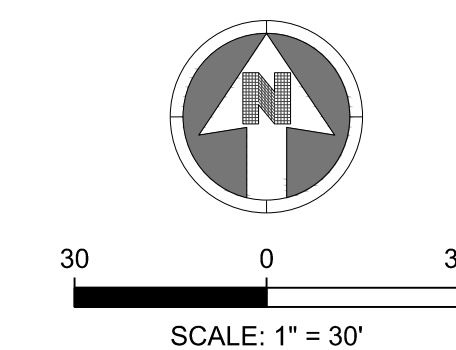
BUILDING IS TO BE CONSTRUCTED WITH AUTOMATED FIRE SPRINKLER SYSTEM (NFPA 13) SO FIRE FLOW REQUIREMENT HAS BEEN REDUCED BY 50%.



PARKER NHC

FIRE TRUCK TURNING EXHIBIT

SHEET:



South Metro Fire Truck	
Overall Length	47.790ft
Overall Width	8.500ft
Overall Body Height	7.558ft
Min Body Ground Clearance	0.808ft
Track Width	8.500ft
Lock-to-lock time	5.00s
Curb to Curb Turning Radius	41.920ft

FIRE FLOW BLOCK

TOTAL FIRE FLOW REQUIRED FOR THIS SITE IS 1875 GPM MINIMUM @ 20 PSI RESIDUAL PRESSURE
 THIS FLOW MUST BE PROVIDED FROM A MINIMUM OF 2 FIRE HYDRANTS
 INDIVIDUALLY, EACH FIRE HYDRANT MUST SUPPLY 1500 GPM MINIMUM @ 20 PSI RESIDUAL PRESSURE

CODE USED FOR ANALYSIS: 2015 INTERNATIONAL FIRE CODE AND 2015 INTERNATIONAL BUILDING CODE

OCCUPANCY GROUPS: B

CONSTRUCTION TYPE: 2B

FIRE FLOW CALCULATION AREA: 29,788 SF
 TOTAL BUILDING AREA: 29,788 SF

BUILDING IS TO BE CONSTRUCTED WITH AUTOMATED FIRE SPRINKLER SYSTEM (NFPA 13) SO FIRE FLOW REQUIREMENT HAS BEEN REDUCED BY 50%.