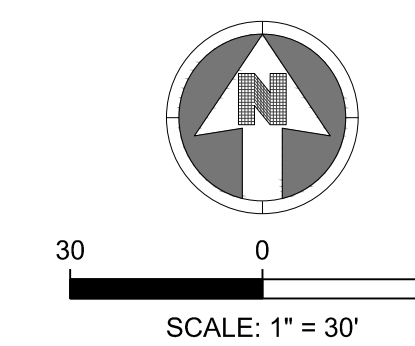


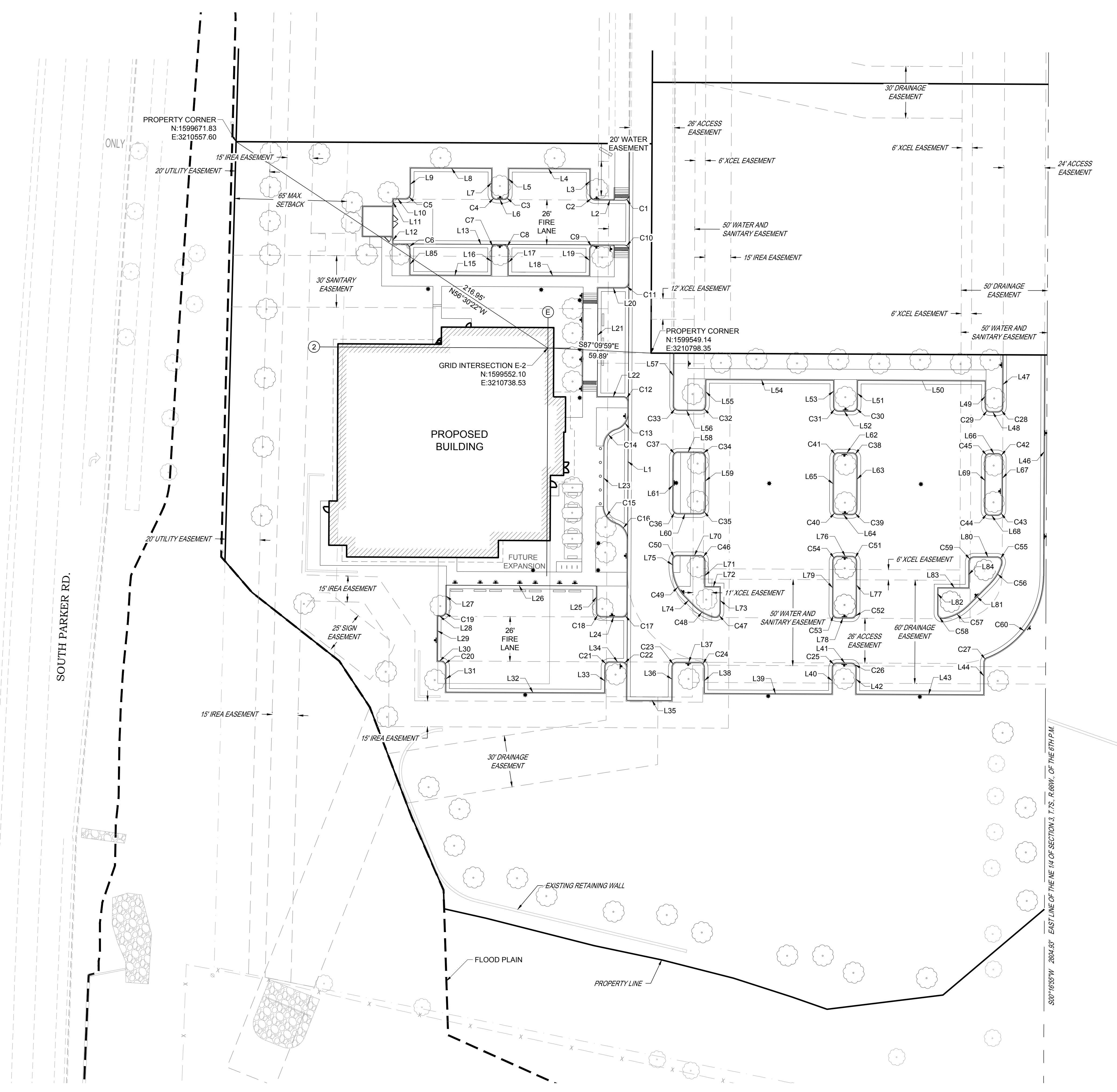
S.A. MIRO INC.  
CONSULTING ENGINEERS  
4582 South Ulster Street  
Suite 750, Denver, CO 80237  
303-741-3737  
www.samiro.com



Know what's below.  
Call before you dig.



NOTES:  
1. SEE SHEET C-001 FOR CIVIL NOTES AND LEGEND.  
2. SEE SHEET C-122 FOR HORIZONTAL CONTROL DATA.



DATE	DESCRIPTION	NO.

PROJECT: **PARKER NHC  
PARKER, CO 80134**

DRAWING TITLE: **HORIZONTAL CONTROL PLAN**

FILE PATH: C:\Users\ssm\ACCDocs\S.A. Miro, Inc\Civil\Jobs\22057 Parker NHC\05 CAD\Plans and Details\C120-HORZ-PLAN.dwg C121 - 1/16/2024



DESIGNED BY: SSM  
DRAWN BY: SSM  
CHECKED BY: JDC  
MIRO JOB NO. 22057

DRAWING NUMBER:  
**C-121**

THE TOWN OF PARKER REVIEW CONSTITUTES GENERAL COMPLIANCE WITH TOWN'S STANDARDS AND APPROVED VARIANCES, SUBJECT TO THESE PLANS BEING STAMPED, SIGNED, AND DATED BY THE PROFESSIONAL ENGINEER OF RECORD. REVIEW BY THE TOWN DOES NOT CONSTITUTE APPROVAL OF THE PLAN DESIGN OR ACCURACY AND CORRECTNESS OF ENGINEERING CALCULATIONS. ERRORS IN THE DESIGN OR CALCULATIONS REMAIN THE RESPONSIBILITY OF THE REGISTERED PROFESSIONAL ENGINEER WHOSE STAMP AND SIGNATURE ARE AFFIXED TO THIS DOCUMENT.

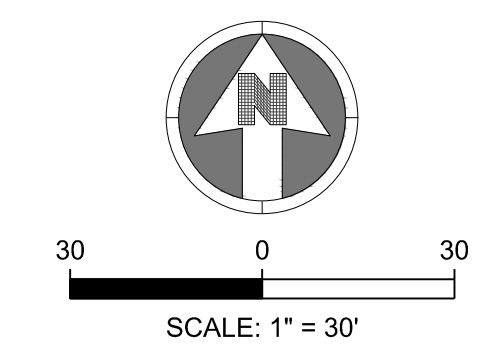
THIS REVIEW DOES NOT CONSTITUTE APPROVAL OF ANY PRIVATE ON-SITE IMPROVEMENTS WHICH MAY BE SHOWN. CONSTRUCTION CANNOT COMMENCE UNTIL ALL REQUIRED DRAINAGE/TRAFFIC REPORT(S), FINAL DEVELOPMENT PLAN(S), SPECIAL REVIEW(S), GRADING PERMIT, AND/OR OTHER PERMITS ARE COMPLETE, APPROVED AND ON FILE WITH THE TOWN OF PARKER

Town of Parker, Director of Engineering/Public Works \_\_\_\_\_ Date \_\_\_\_\_









**NOTES:**

- SEE SHEETS C-251-C-259 FOR EROSION CONTROL NOTES, LEGEND AND DETAILS.
- THE VTC PAD FOR A CWA DOES NOT NEED TO CONFORM TO THE FORMAL VTC DETAIL.
- THE TRUE LOCATION OF THE CWA MAY BE DETERMINED BY THE TOWN AND THE ECS.
- LOT PROTECTION (LP) IS REQUIRED ON COMMERCIAL LOTS WHEN COMPLETION OF LANDSCAPING IS NOT POSSIBLE AND PRIOR TO ISSUANCE OF A CERTIFICATE OF OCCUPANCY.
- THE TRUE LOCATION OF THE PORTABLE TOILET PROTECTION (PTP) MAY BE DETERMINED BY THE TOWN AND THE ECS.
- MASONRY WORK PROTECTION IS REQUIRED FOR CONSTRUCTION OF BUILDINGS.
- ANY ONSITE BULK FUEL STORAGE REQUIRES A FIRE LIFE SAFETY PERMIT FROM THE TOWN OF PARKER PRIOR TO INSTALLATION.

**LEGEND:**

	(CD)	CHECK DAM
	(CF)	CONSTRUCTION FENCE
	(CP)	CULVERT PROTECTION
	(CWA)	CONCRETE WASHOUT AREA
	(D)	DEWATERING
	(DD)	DIVERSION DITCH
	(DP)	DETENTION POND PROTECTION
	(DTC)	DEBRIS TRASH CONTROL
	(ECB)	EROSION CONTROL BLANKET
	(IPAN)	INLET PROTECTION FOR AREA INLETS NOT IN PAVEMENT
	(IPAP)	INLET PROTECTION FOR AREA INLETS IN PAVEMENT
	(PCOG)	INLET PROTECTION, CURB ON-GRADE, TYPE R INLET
	(PCOS)	INLET PROTECTION, CURB ON SUMP, TYPE R INLET
	(LP)	LOT PROTECTION
	(MWP)	MASONRY WORK PROTECTION
	(PTP)	PORTABLE TOILET PROTECTION
	(RCSC)	ROUGH CUT STREET CONTROL
	(RS)	ROCK SOCK
	(RSS)	ROCK SOCK IN SWALE
	(SB)	STRAW BALE
	(SCL)	SEDIMENT CONTROL LOGS
	(SF)	SILT FENCE
	(SMC)	SEEDING, MULCHING AND CRIMPING
	(SR)	SURFACE ROUGHING
	(SSA)	STABILIZED STAGING AREA
	(STP)	SIDEWALK TRANSITION PROTECTION
	(TI)	TEMPORARY IRRIGATION
	(TSB)	TEMPORARY SEDIMENT BASIN
	(VTC)	VEHICLE TRACKING CONTROL
	(LOC)	LIMITS OF CONSTRUCTION
		FLOW DIRECTION ARROW

THE TOWN OF PARKER CONSTITUTES GENERAL COMPLIANCE WITH TOWN'S STANDARDS AND APPROVED VARIANCES, SUBJECT TO THESE PLANS BEING STAMPED, SIGNED, AND DATED BY THE PROFESSIONAL ENGINEER OF RECORD. REVIEW BY THE TOWN DOES NOT CONSTITUTE APPROVAL OF THE PLAN DESIGN OR ACCURACY AND CORRECTNESS OF ENGINEERING CALCULATIONS. ERRORS IN THE DESIGN OR CALCULATIONS REMAIN THE RESPONSIBILITY OF THE REGISTERED PROFESSIONAL ENGINEER WHOSE STAMP AND SIGNATURE ARE AFFIXED TO THIS DOCUMENT.

THIS REVIEW DOES NOT CONSTITUTE APPROVAL OF ANY PRIVATE ON-SITE IMPROVEMENTS WHICH MAY BE SHOWN. CONSTRUCTION CANNOT COMMENCE UNTIL ALL REQUIRED DRAINAGE/TRAFFIC REPORT(S), FINAL DEVELOPMENT PLAN(S), SPECIAL REVIEW(S), GRADING PERMIT, AND/OR OTHER PERMITS ARE COMPLETE, APPROVED AND ON FILE WITH THE TOWN OF PARKER

DATE	DESCRIPTION	NO.

PROJECT: **PARKER NHC  
PARKER, CO 80134**

DRAWING TITLE: **INITIAL EROSION CONTROL PLAN**

FILE PATH: C:\Users\ssm\ACCDocs\S.A. Miro, Inc\Civil\Jobs\22057 Parker NHC\05 CAD\Plans and Details\C241-INITIAL-EROS-PLAN.dwg C241 - 1/16/2024



DESIGNED BY: SSM  
DRAWN BY: SSM  
CHECKED BY: JDC  
MIRO JOB NO. 22057

DRAWING NUMBER:  
**C-241**









S.A. MIRO INC.  
CONSULTING ENGINEERS

4582 South Ulster Street  
Suite 750, Denver, CO 80237  
303-741-3737  
www.samiro.com

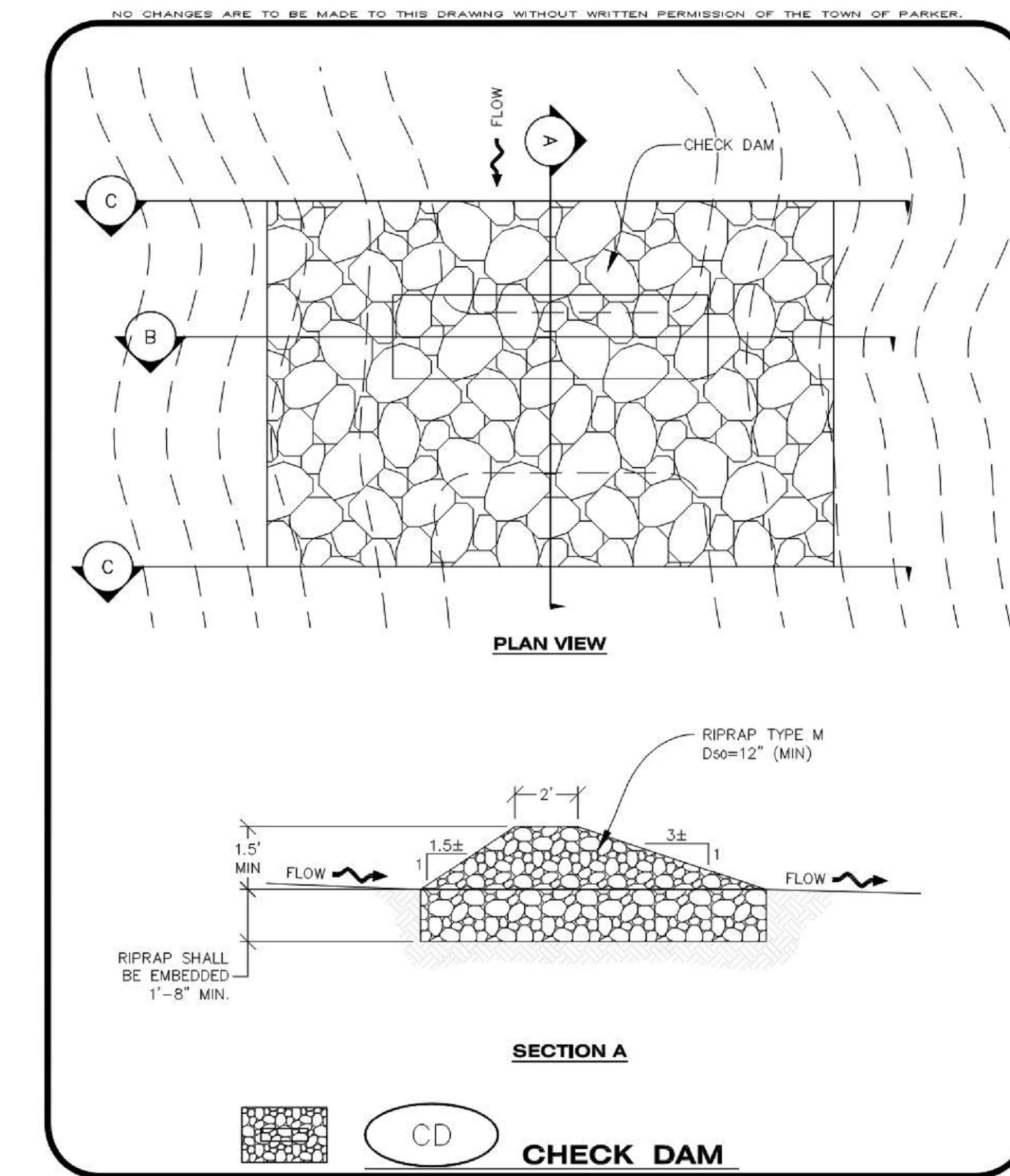


Know what's below.  
Call before you dig.

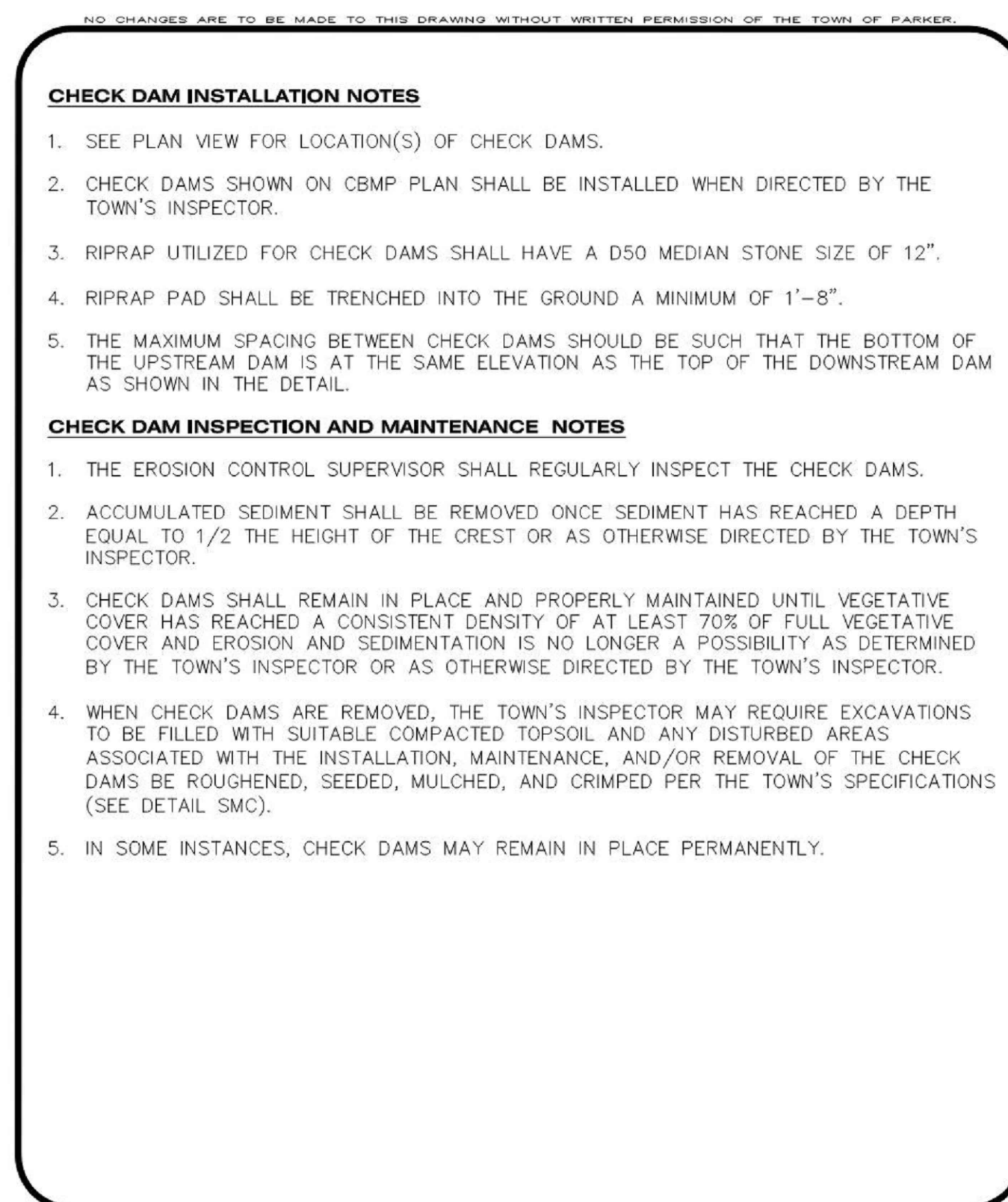
DATE	DESCRIPTION	NO.

PROJECT: PARKER NHC  
DRAWING TITLE: EROSION CONTROL DETAILS  
FILE PATH: C:\Users\ssm\ACCDocs\S.A. Miro, Inc\Civil\Jobs\22057 Parker NHC\05 CAD\Plans and Details\C251-EROS-DTLS.dwg C252 - 1/16/2024

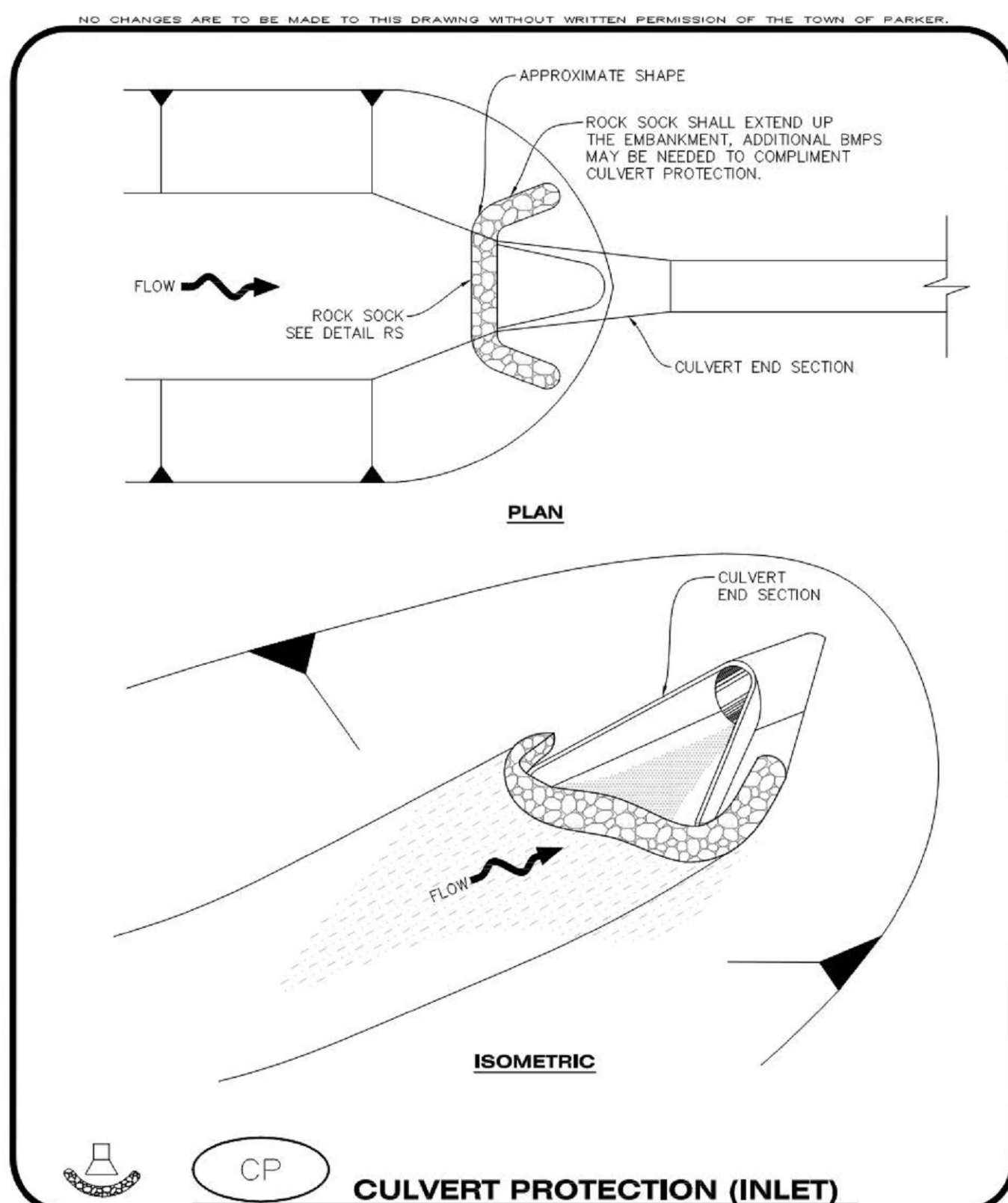
DESIGNED BY: SSM  
DRAWN BY: SSM  
CHECKED BY: JDC  
MIRO JOB NO. 22057  
DRAWING NUMBER: C-252



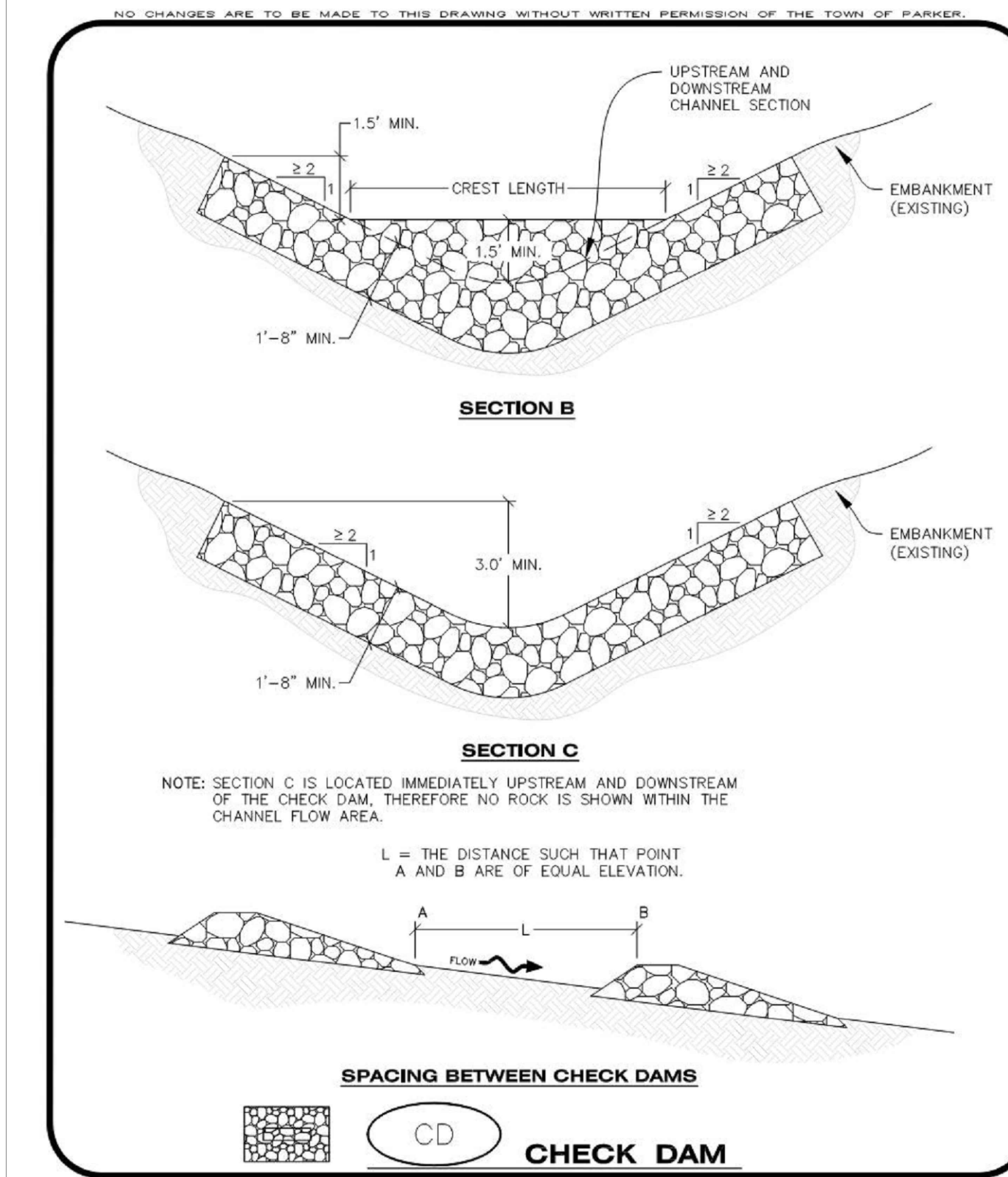
**CD** CHECK DAM  
CONSTRUCTION BEST MANAGEMENT PRACTICES  
1 OF 3  
Oct. 2013



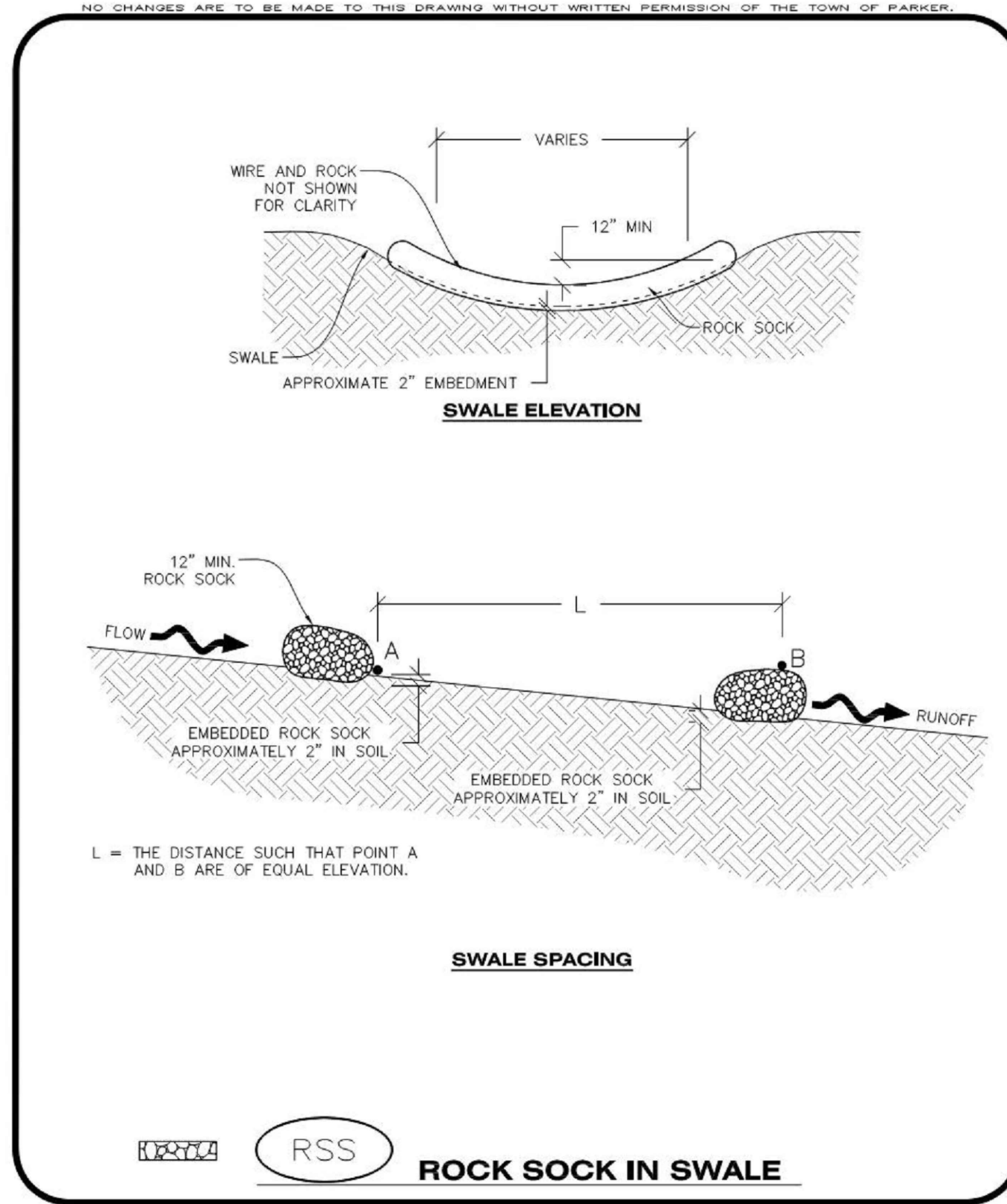
**CP** CULVERT PROTECTION (INLET)  
CONSTRUCTION BEST MANAGEMENT PRACTICES  
3 OF 3  
Oct. 2013



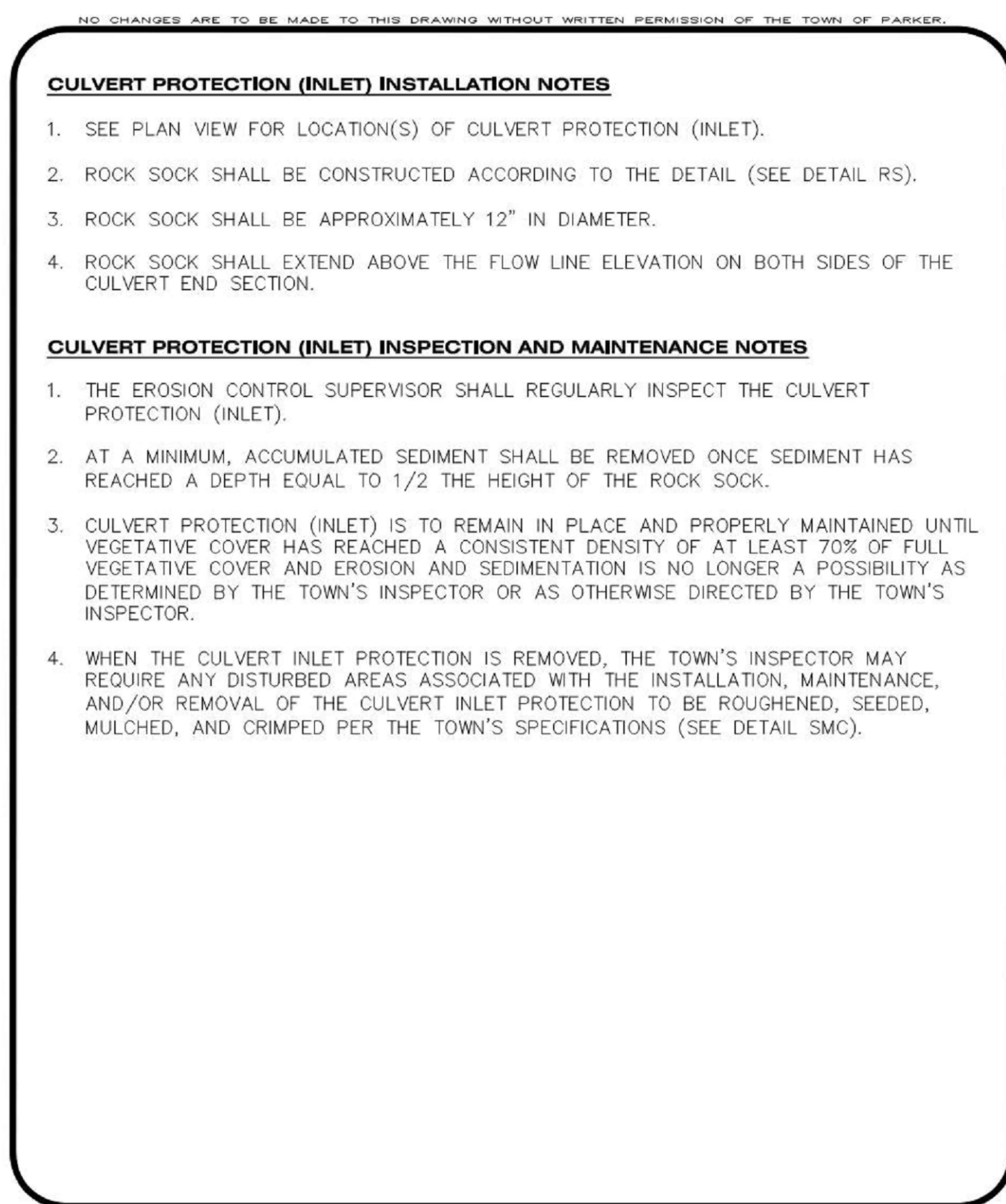
**CF** CONSTRUCTION FENCE  
CONSTRUCTION BEST MANAGEMENT PRACTICES  
1 OF 2  
Oct. 2013



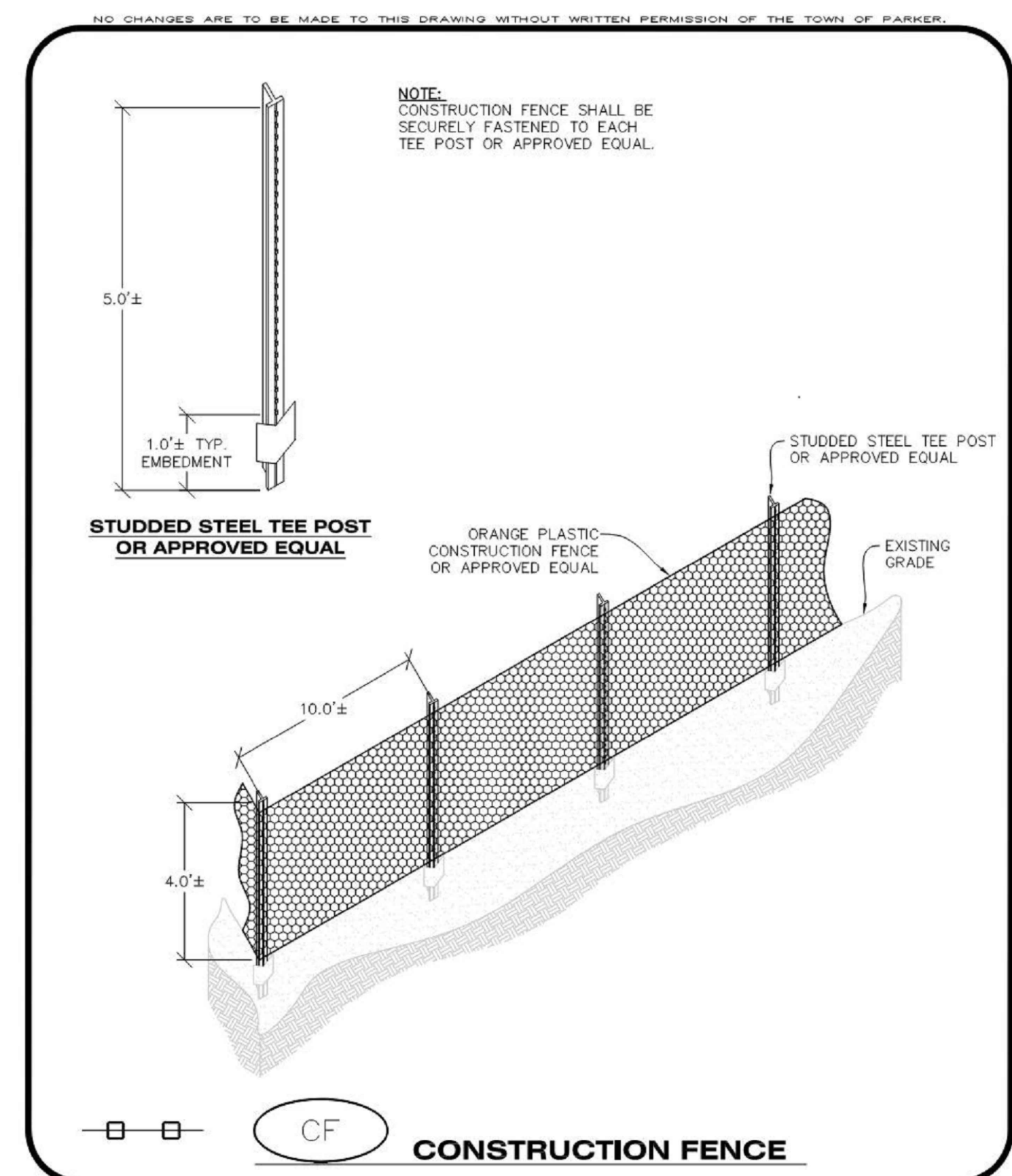
**RSS** ROCK SOCK IN SWALE  
CONSTRUCTION BEST MANAGEMENT PRACTICES  
1 OF 1  
Oct. 2013



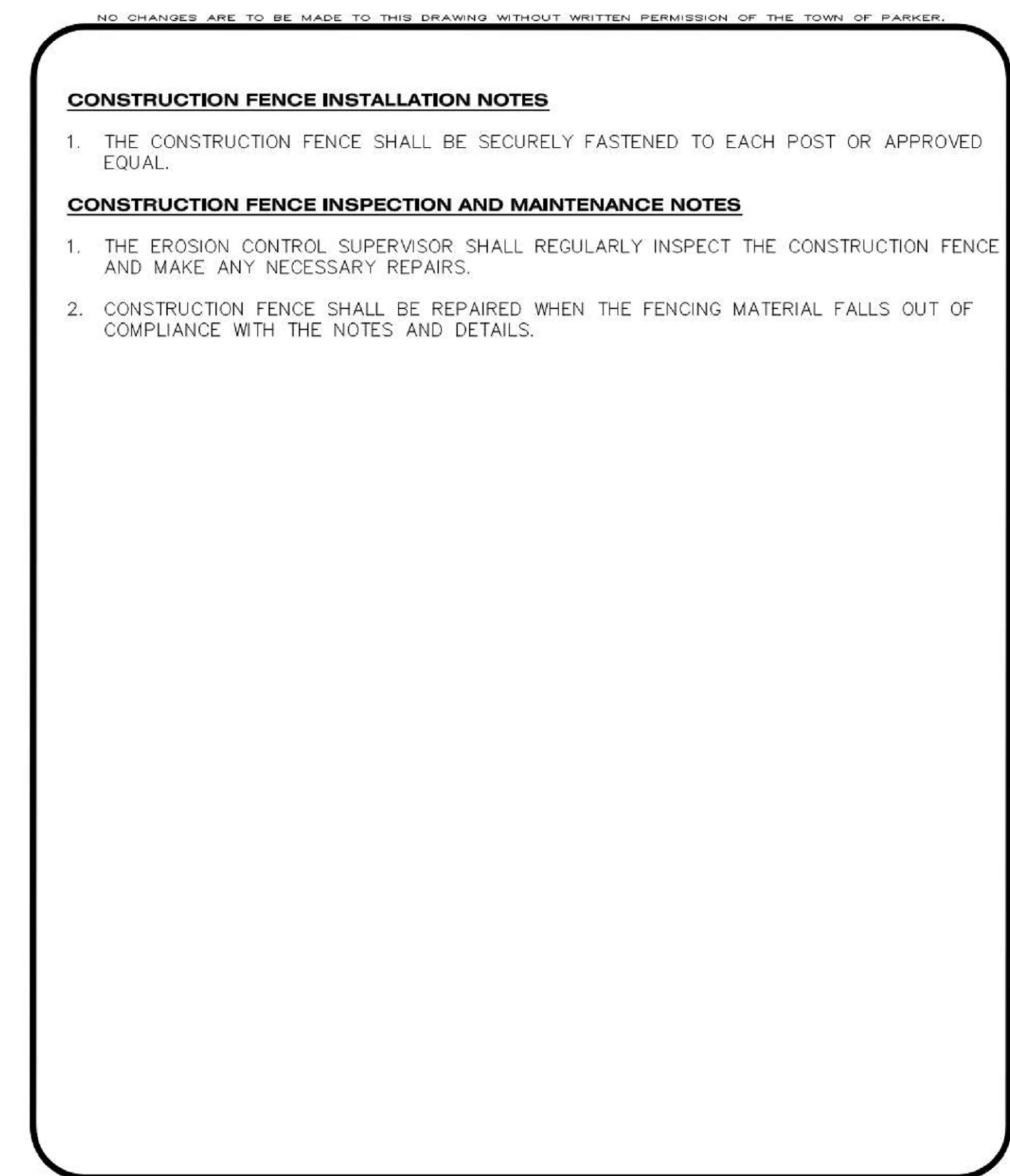
**CD** CHECK DAM  
CONSTRUCTION BEST MANAGEMENT PRACTICES  
2 OF 3  
Oct. 2013



**CP** CULVERT PROTECTION (INLET)  
CONSTRUCTION BEST MANAGEMENT PRACTICES  
2 OF 2  
Oct. 2013



**CF** CONSTRUCTION FENCE  
CONSTRUCTION BEST MANAGEMENT PRACTICES  
2 OF 2  
Oct. 2013



**CF** CONSTRUCTION FENCE  
CONSTRUCTION BEST MANAGEMENT PRACTICES  
2 OF 2  
Oct. 2013









S.A. MIRO INC.  
CONSULTING ENGINEERS

4582 South Ulster Street  
Suite 750, Denver, CO 80237  
303-741-3737  
www.samiro.com



Know what's below.  
Call before you dig.

DATE	
DESCRIPTION	
NO.	

PROJECT: PARKER NHC  
PARKER, CO 80134

DRAWING TITLE: EROSION CONTROL DETAILS

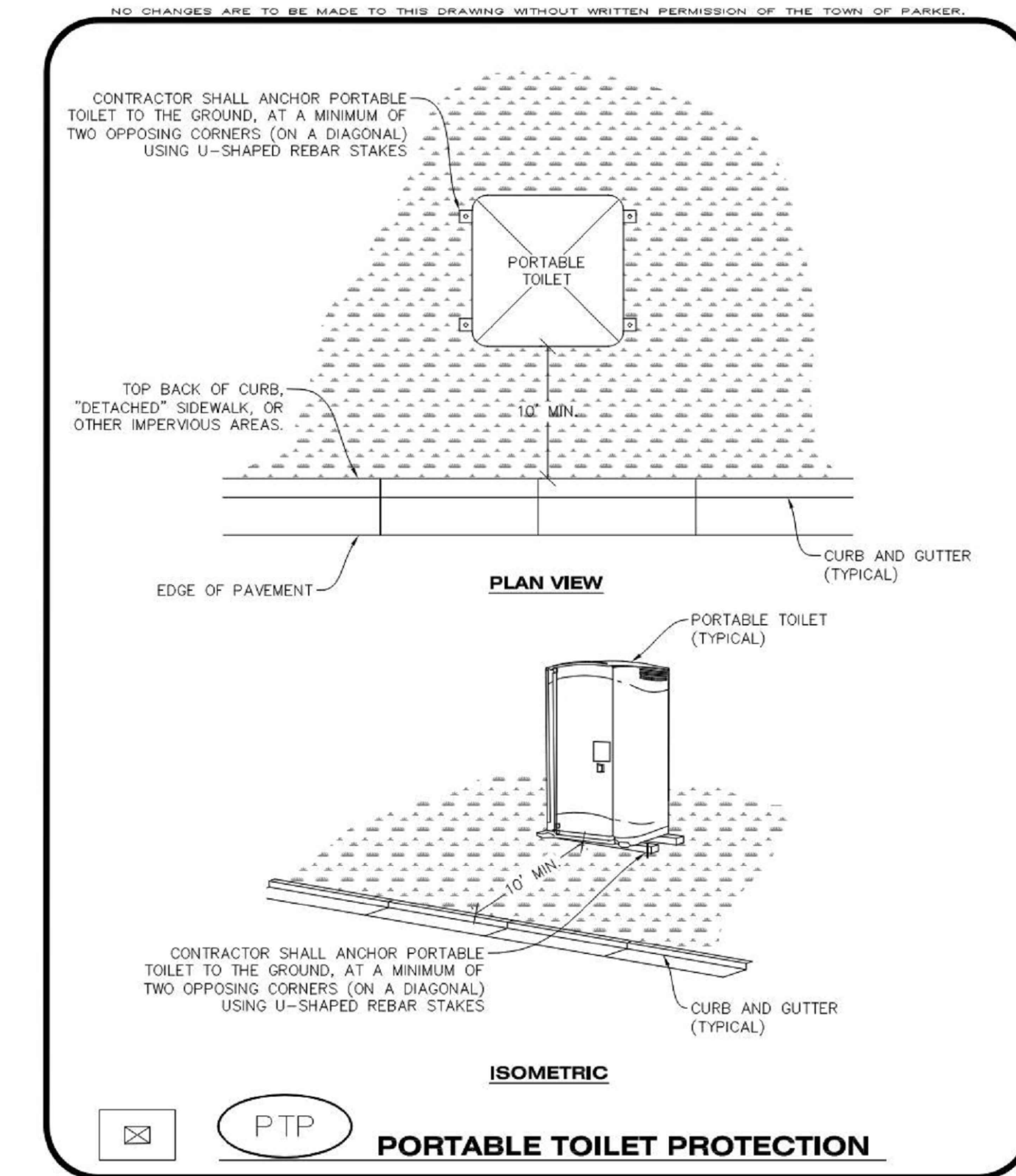
FILE PATH: C:\Users\ssm\ACCDocs\S.A. Miros\Incl\Civil\Jobs\22057 Parker NHC\05 CAD\Plans and Details\C251-EROS-DTLS.dwg C256 - 1/16/2024



DESIGNED BY: SSM  
DRAWN BY: SSM  
CHECKED BY: JDC  
MIRO JOB NO. 22057

DRAWING NUMBER:

C-256



**PTP** PORTABLE TOILET PROTECTION  
CONSTRUCTION BEST MANAGEMENT PRACTICES  
1 OF 2  
Oct. 2013

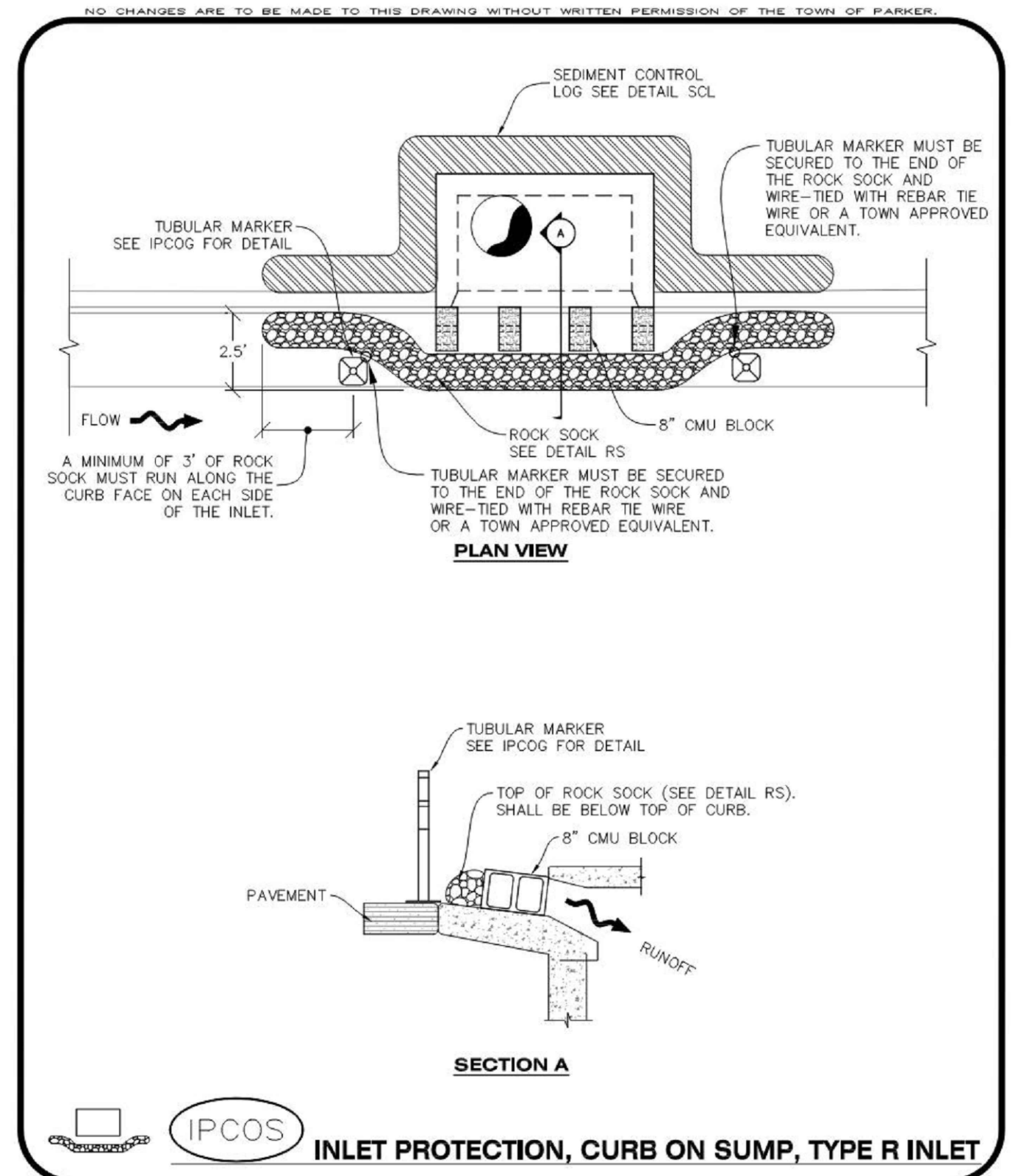
**PORTABLE TOILET PROTECTION INSTALLATION NOTES**

- PORTABLE TOILETS SHALL BE PLACED A MINIMUM OF 10.0' BEHIND ALL CURBS, SIDEWALKS, AND OTHER IMPERVIOUS AREAS.
- ALL PORTABLE TOILETS MUST BE GROUPED TOGETHER.
- PORTABLE TOILETS SHALL BE SECURELY ANCHORED TO THE GROUND USING U-SHAPED REBAR STAKES.
- U-SHAPED REBAR STAKES SHALL BE POSITIONED ON AT LEAST 2 OPPOSING (DIGITAL) CORNERS.

**PORTABLE TOILET PROTECTION INSPECTION AND MAINTENANCE NOTES**

- THE EROSION CONTROL SUPERVISOR SHALL REGULARLY INSPECT THE PORTABLE TOILET PROTECTION.
- PORTABLE TOILETS SHALL BE SERVICED AT THE NECESSARY INTERVALS TO ELIMINATE THE POSSIBILITY OF OVERFLOW.
- WHEN THE PORTABLE TOILETS ARE REMOVED, ANY DISTURBED AREAS ASSOCIATED WITH THE INSTALLATION, MAINTENANCE, AND/OR REMOVAL OF THE TOILETS MAY NEED TO BE LANDSCAPED OR ROUGHENED, SEEDED, MULCHED, AND CRIMPED PER THE TOWN'S SPECIFICATIONS (SEE DETAIL SMC).
- PORTABLE TOILETS THAT ARE NOT CONSISTENTLY MAINTAINED IN ACCORDANCE WITH THESE REQUIREMENTS MAY NEED TO BE CLUSTERED TOGETHER, IN ONE CENTRALIZED LOCATION IN ORDER TO INCREASE COMPLIANCE AND REDUCE THE CHANCE OF A SPILL.

**PTP** PORTABLE TOILET PROTECTION  
CONSTRUCTION BEST MANAGEMENT PRACTICES  
2 OF 2  
Oct. 2013



**IPCOS** INLET PROTECTION, CURB ON SUMP, TYPE R INLET  
CONSTRUCTION BEST MANAGEMENT PRACTICES  
1 OF 2  
Oct. 2013

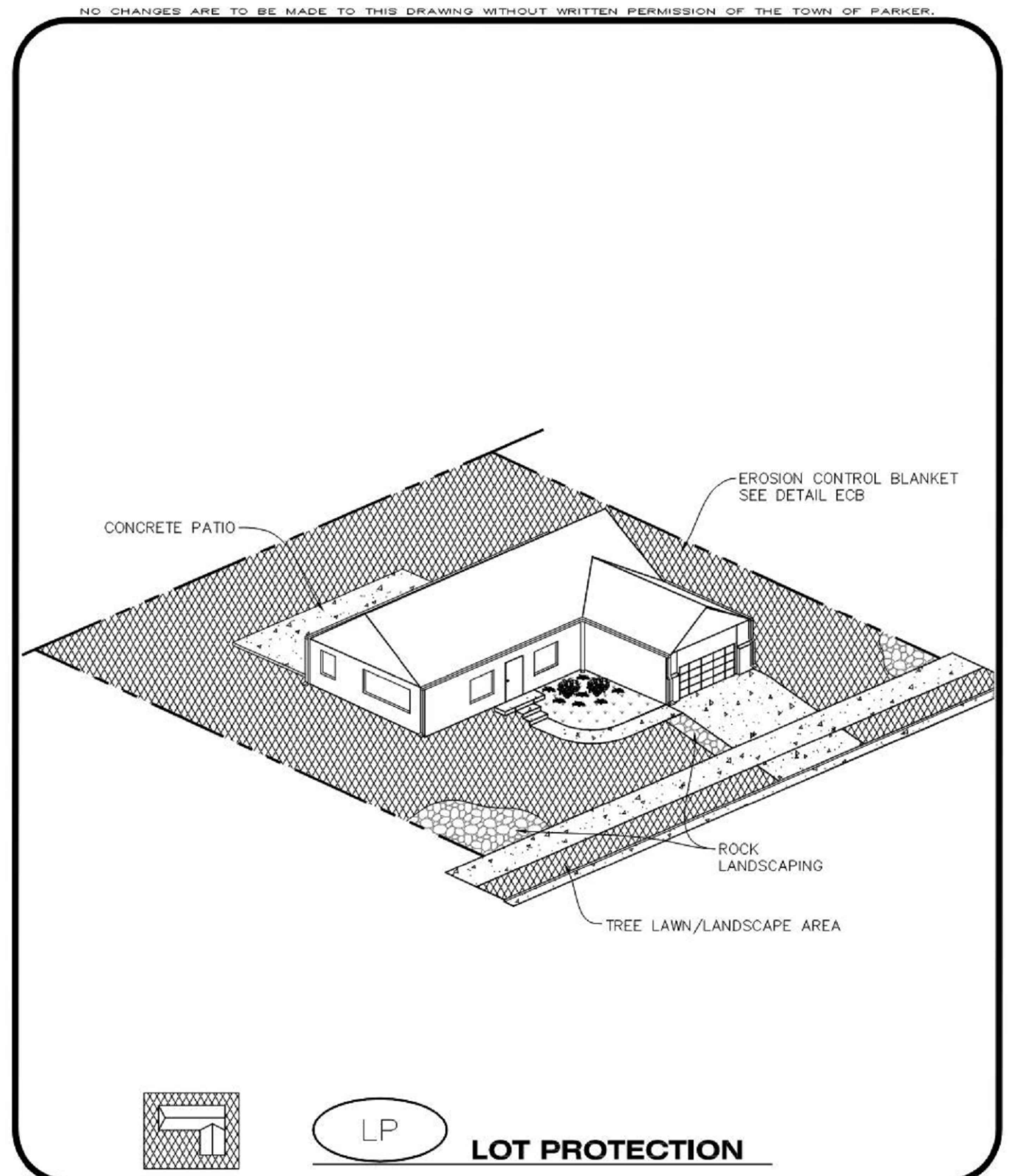
**CURB INLET PROTECTION INSTALLATION NOTES**

- SEE CBMP PLAN FOR LOCATION(S) OF CURB INLET PROTECTION.
- CRUSHED ROCK SHALL BE 2.0"-3.0" IN SIZE WITH A FRACTURED FACE (ALL SIDES).
- ROCK SOCK SHALL BE ONE CONTINUOUS PIECE OR SHALL BE CONSTRUCTED USING WIRE WRAPPED JOINTS (SEE DETAIL RS).
- ROCK SOCK SHALL BE CONSTRUCTED USING CHICKEN WIRE OR OTHER APPROVED MATERIAL SIZED TO KEEP ROCK FROM SPILLING OUT.
- ROCK SOCK SHALL EXTEND 3.0' ALONG THE CURB BEYOND LOCATIONS WHERE IT RETURNS TO CONTACT CURB FACE.
- TUBULAR TRAFFIC MARKERS SHALL BE A MINIMUM OF 36" IN HEIGHT WITH REFLECTIVE BANDS AND OCTAGON SHAPED BASES.
- THE CURB INLET PROTECTION SHOWN ON CBMP PLAN SHALL BE INSTALLED ON EXISTING INLETS PRIOR TO ANY LAND DISTURBING ACTIVITIES OR IMMEDIATELY AFTER THE INSTALLATION OF THE FIRST LIFT OF ASPHALT ON ROADWAYS DRAINING TO THE CURB INLET. CMU BLOCKS OR THE ROCK SOCK SHALL BE USED AS INTERIM PROTECTION UNTIL THE FIRST LIFT OF ASPHALT IS INSTALLED.

**CURB INLET PROTECTION INSPECTION AND MAINTENANCE NOTES**

- THE EROSION CONTROL SUPERVISOR SHALL REGULARLY INSPECT THE CURB INLET PROTECTION.
- ACCUMULATED SEDIMENT SHALL BE REMOVED AS SOON AS POSSIBLE, IMMEDIATELY IN MOST CASES.
- ROCK SOCKS SHALL BE REPLACED IF THEY BECOME HEAVILY SOILED OR DAMAGED.
- CURB INLET PROTECTION SHALL REMAIN IN PLACE AND PROPERLY MAINTAINED UNTIL VEGETATIVE COVER HAS REACHED A CONSISTENT DENSITY OF AT LEAST 70% OF FULL VEGETATIVE COVER AND EROSION AND SEDIMENTATION IS NO LONGER A POSSIBILITY AS DETERMINED BY THE TOWN'S INSPECTOR OR AS OTHERWISE DIRECTED BY THE TOWN'S INSPECTOR.

**IPCOS** INLET PROTECTION, CURB ON SUMP, TYPE R INLET  
CONSTRUCTION BEST MANAGEMENT PRACTICES  
2 OF 2  
Oct. 2013



**LP** LOT PROTECTION  
CONSTRUCTION BEST MANAGEMENT PRACTICES  
1 OF 2  
Oct. 2013

**EROSION CONTROL BLANKET FOR LOT PROTECTION INSTALLATION NOTES**

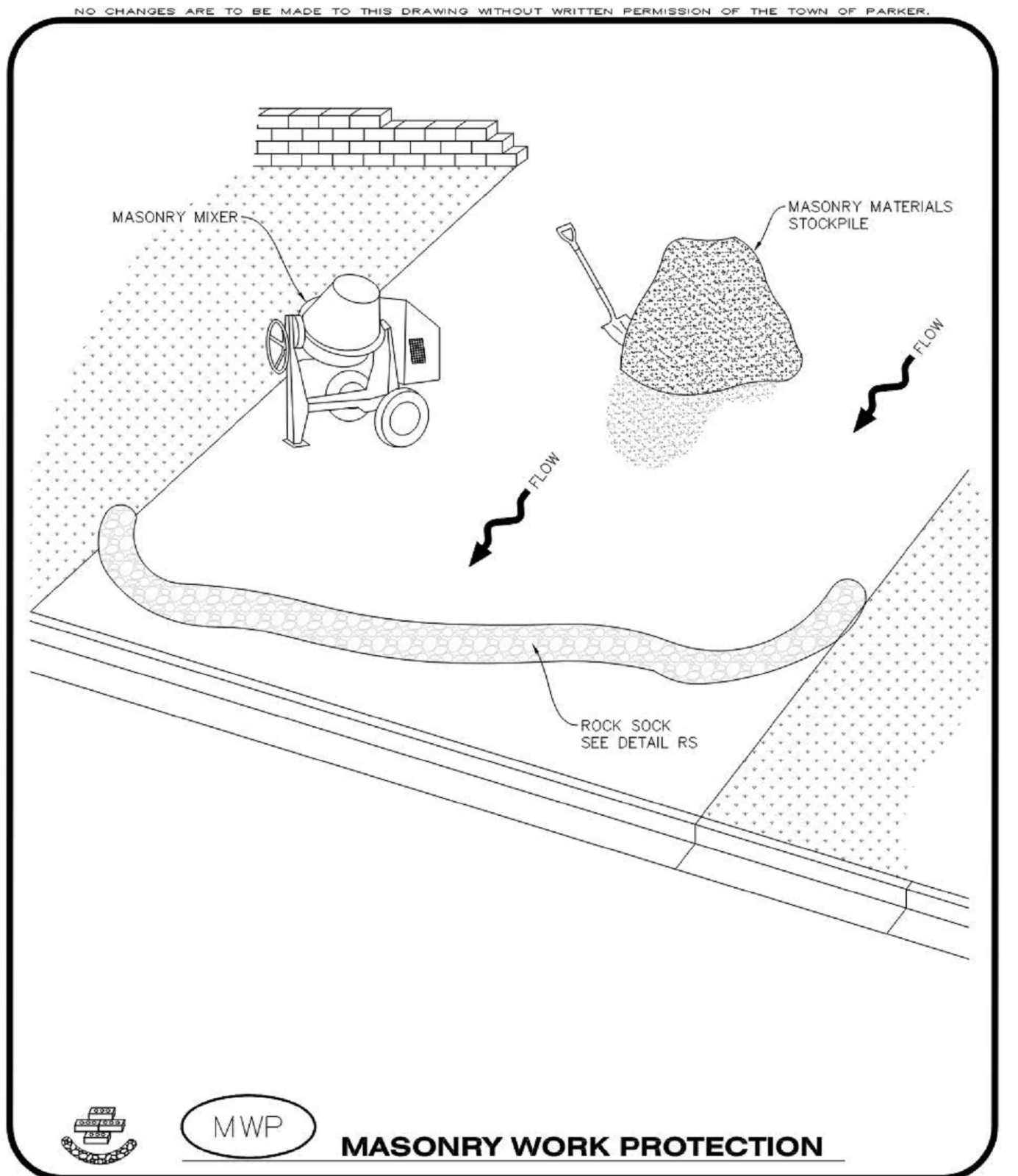
- ALL EROSION CONTROL BLANKETS FOR LOT PROTECTION INSTALLED IN THE TOWN SHALL MEET THE FOLLOWING MINIMUM REQUIREMENTS:

MANUFACTURER	PRODUCT NAME
NORTH AMERICAN GREEN	S150 BN
APPROVED EQUAL	APPROVED EQUAL
- ALL EROSION CONTROL BLANKETS FOR LOT PROTECTION SHALL BE INSTALLED ACCORDING TO THE DETAIL DRAWINGS, WITH THE FOLLOWING ALLOWANCES AND ADDITIONS:
  - THE TOWN WILL ALLOW THE USE OF BIODEGRADABLE, EROSION CONTROL BLANKET-SPECIFIC STAPLES, IN LIEU OF TRADITIONAL METAL STAPLES.
  - ALL EROSION CONTROL BLANKET EDGES (SIDES AND ENDS) MUST OVERLAP THE ADJACENT BLANKET BY A MINIMUM OF 6-INCHES WITH THE UP-GRADIENT EDGES BEING PLACED ON TOP OF THE DOWN-GRADIENT EDGE OF THE ADJACENT BLANKET.
  - THE EDGES (SIDES AND ENDS) OF THE EROSION CONTROL BLANKETS DO NOT NEED TO BE TRENCHED INTO THE GROUND ASSUMING THE SITE CONDITIONS WILL NOT CAUSE EROSION BENEATH THE BLANKETS. THESE ASSUMPTIONS WILL BE THE RESPONSIBILITY OF THE EROSION CONTROL SUPERVISOR. ON OCCASION, THE TOWN'S INSPECTOR MAY REQUEST TRENCHING BASED UPON SITE CONDITIONS.
  - TOPSOIL PLACEMENT, SEEDING, AND MULCHING WILL NOT BE REQUIRED ON THE LOTS PRIOR TO THE INSTALLATION OF THE EROSION CONTROL BLANKET.
- ANY DAMAGED OR EXCESS STAPLES SHALL BE REMOVED FROM THE SITE FOLLOWING INSTALLATION.
- THE EROSION CONTROL BLANKETING REQUIRED AS PART OF THE LOT PROTECTION (LP) REQUIREMENT MUST BE INSTALLED OVER ALL UN-LANDSCAPED AREAS WITHIN EACH RESIDENTIAL, MULTI-FAMILY, AND COMMERCIAL LOT PRIOR TO THE ISSUANCE OF A CERTIFICATE OF OCCUPANCY / TEMPORARY CERTIFICATE OF OCCUPANCY.

**EROSION CONTROL BLANKET FOR LOT PROTECTION MAINTENANCE NOTES**

- THE EROSION CONTROL SUPERVISOR SHALL REGULARLY INSPECT THE EROSION CONTROL BLANKET FOR LOT PROTECTION.
- EROSION CONTROL BLANKETS FOR LOT PROTECTION ARE INTENDED TO REMAIN IN PLACE AND MAINTAINED UNTIL LANDSCAPING IS INSTALLED.

**LP** LOT PROTECTION  
CONSTRUCTION BEST MANAGEMENT PRACTICES  
2 OF 2  
Oct. 2013



**MWP** MASONRY WORK PROTECTION  
CONSTRUCTION BEST MANAGEMENT PRACTICES  
1 OF 2  
Oct. 2013

**MASONRY WORK PROTECTION INSTALLATION NOTES**

- MASONRY WORK PROTECTION MAY NEED TO BE INSTALLED WHEN MASONRY WORK AND MIXING IS OCCURRING.
- A ROCK SOCK SHALL BE INSTALLED IN A CRESCENT SHAPE ON THE DOWNHILL SIDE OF THE MASONRY WORK AND MIXER.
- CRUSHED ROCK SHALL BE 2.0"-3.0" IN SIZE WITH A FRACTURED FACE (ALL SIDES).
- ROCK SOCK SHALL BE ONE CONTINUOUS PIECE OR SHALL BE CONSTRUCTED USING WIRE WRAPPED JOINTS (SEE DETAIL RS).
- ROCK SOCK SHALL BE CONSTRUCTED USING CHICKEN WIRE OR OTHER APPROVED MATERIAL, SIZED TO KEEP ROCK FROM SPILLING OUT.

**MASONRY WORK PROTECTION INSPECTION AND MAINTENANCE NOTES**

- THE EROSION CONTROL SUPERVISOR SHALL REGULARLY INSPECT THE MASONRY WORK PROTECTION.
- ALL CONCRETE WASTE SHALL BE REGULARLY CLEANED AND PLACED IN THE CONCRETE WASH OUT AREA.
- ROCK SOCKS SHALL BE REPLACED IF THEY BECOME HEAVILY SOILED OR DAMAGED.

**MWP** MASONRY WORK PROTECTION  
CONSTRUCTION BEST MANAGEMENT PRACTICES  
2 OF 2  
Oct. 2013

NO CHANGES ARE TO BE MADE TO THIS DRAWING WITHOUT WRITTEN PERMISSION OF THE TOWN OF PARKER.

NO CHANGES ARE TO BE MADE TO THIS DRAWING WITHOUT WRITTEN PERMISSION OF THE TOWN OF PARKER.

NO CHANGES ARE TO BE MADE TO THIS DRAWING WITHOUT WRITTEN PERMISSION OF THE TOWN OF PARKER.

NO CHANGES ARE TO BE MADE TO THIS DRAWING WITHOUT WRITTEN PERMISSION OF THE TOWN OF PARKER.

NO CHANGES ARE TO BE MADE TO THIS DRAWING WITHOUT WRITTEN PERMISSION OF THE TOWN OF PARKER.

NO CHANGES ARE TO BE MADE TO THIS DRAWING WITHOUT WRITTEN PERMISSION OF THE TOWN OF PARKER.

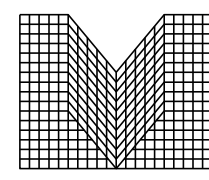
NO CHANGES ARE TO BE MADE TO THIS DRAWING WITHOUT WRITTEN PERMISSION OF THE TOWN OF PARKER.

NO CHANGES ARE TO BE MADE TO THIS DRAWING WITHOUT WRITTEN PERMISSION OF THE TOWN OF PARKER.







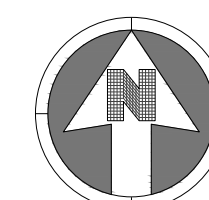


S.A. MIRO INC.  
CONSULTING ENGINEERS

4582 South Ulster Street  
Suite 750, Denver, CO 80237  
303-741-3737  
www.samiro.com



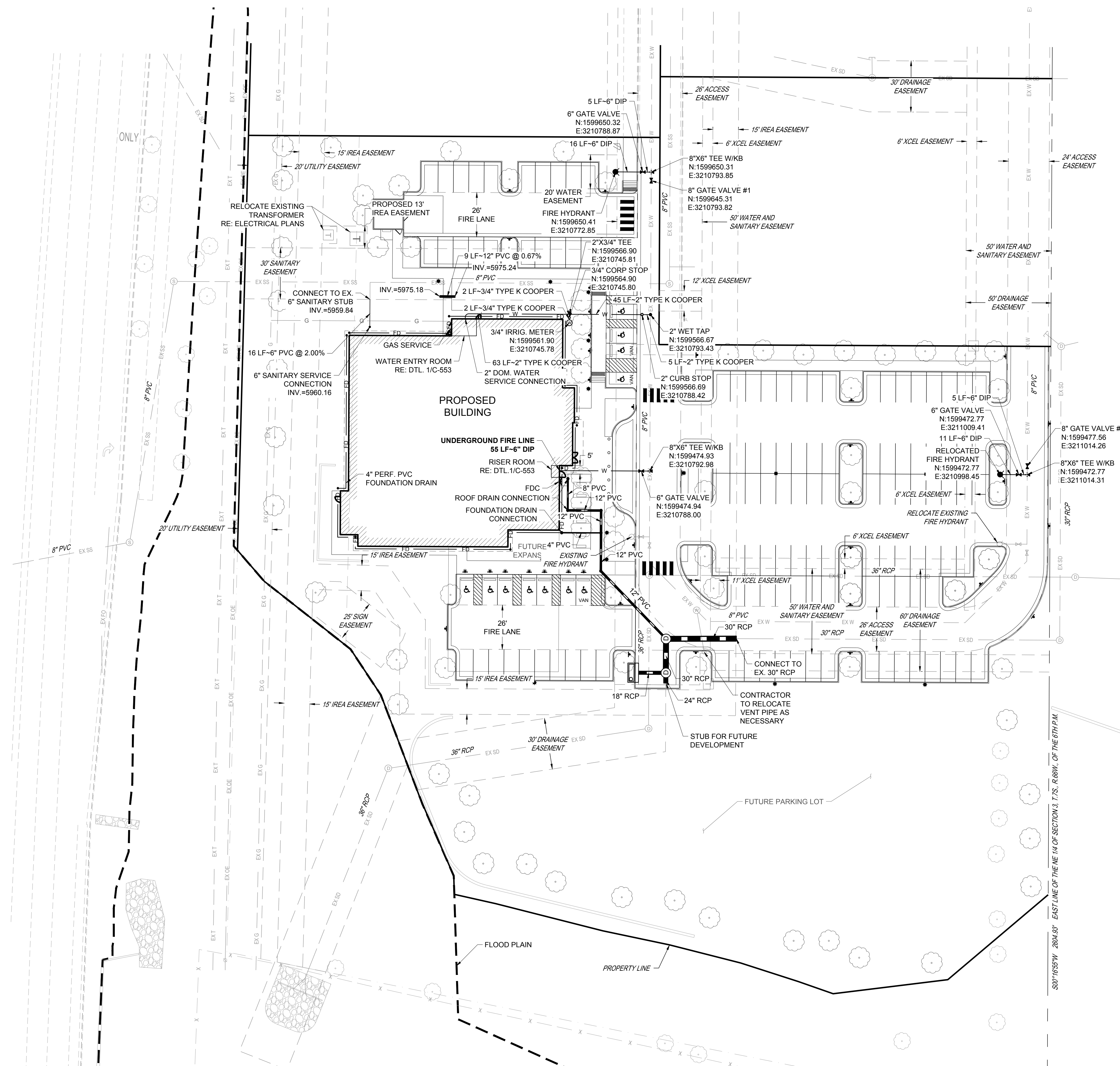
Know what's below.  
Call before you dig.



30 0 30  
SCALE: 1" = 30'

NOTES:

- SEE SHEET C-001 FOR CIVIL NOTES AND LEGEND.
- GAS SERVICE LINE IS SHOWN FOR INFORMATIONAL PURPOSES ONLY. FINAL DESIGN WILL BE DONE BY THE PROVIDER.



THE TOWN OF PARKER REVIEW CONSTITUTES GENERAL COMPLIANCE WITH TOWN'S STANDARDS AND APPROVED VARIANCES, SUBJECT TO THESE PLANS BEING STAMPED, SIGNED, AND DATED BY THE PROFESSIONAL ENGINEER OF RECORD. REVIEW BY THE TOWN DOES NOT CONSTITUTE APPROVAL OF THE PLAN DESIGN OR ACCURACY AND CORRECTNESS OF ENGINEERING CALCULATIONS. ERRORS IN THE DESIGN OR CALCULATIONS REMAIN THE RESPONSIBILITY OF THE REGISTERED PROFESSIONAL ENGINEER WHOSE STAMP AND SIGNATURE ARE AFFIXED TO THIS DOCUMENT.

THIS REVIEW DOES NOT CONSTITUTE APPROVAL OF ANY PRIVATE ON-SITE IMPROVEMENTS WHICH MAY BE SHOWN. CONSTRUCTION CANNOT COMMENCE UNTIL ALL REQUIRED DRAINAGE/TRAFFIC REPORT(S), FINAL DEVELOPMENT PLAN(S), SPECIAL REVIEW(S), GRADING PERMIT, AND/OR OTHER PERMITS ARE COMPLETE, APPROVED AND ON FILE WITH THE TOWN OF PARKER

Town of Parker, Director of Engineering/Public Works Date

NO.	DESCRIPTION	DATE

PROJECT: PARKER NHC  
PARKER, CO 80134  
DRAWING TITLE: UTILITY PLAN

DESIGNED BY: SSM  
DRAWN BY: SSM  
CHECKED BY: JDC  
MIRO JOB NO. 22057  
DRAWING NUMBER: C-311



DESIGNED BY: SSM  
DRAWN BY: SSM  
CHECKED BY: JDC  
MIRO JOB NO. 22057  
DRAWING NUMBER: C-311

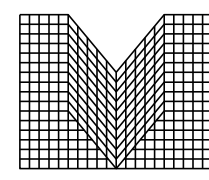
C-311

FILE PATH: C:\Users\ssm\ACCDocs\S.A. Miro, Inc\Civil\Jobs\22057 Parker NHC\05 CAD\Plans and Details\C311-UTIL-PLAN.dwg C311 - 1/16/2024







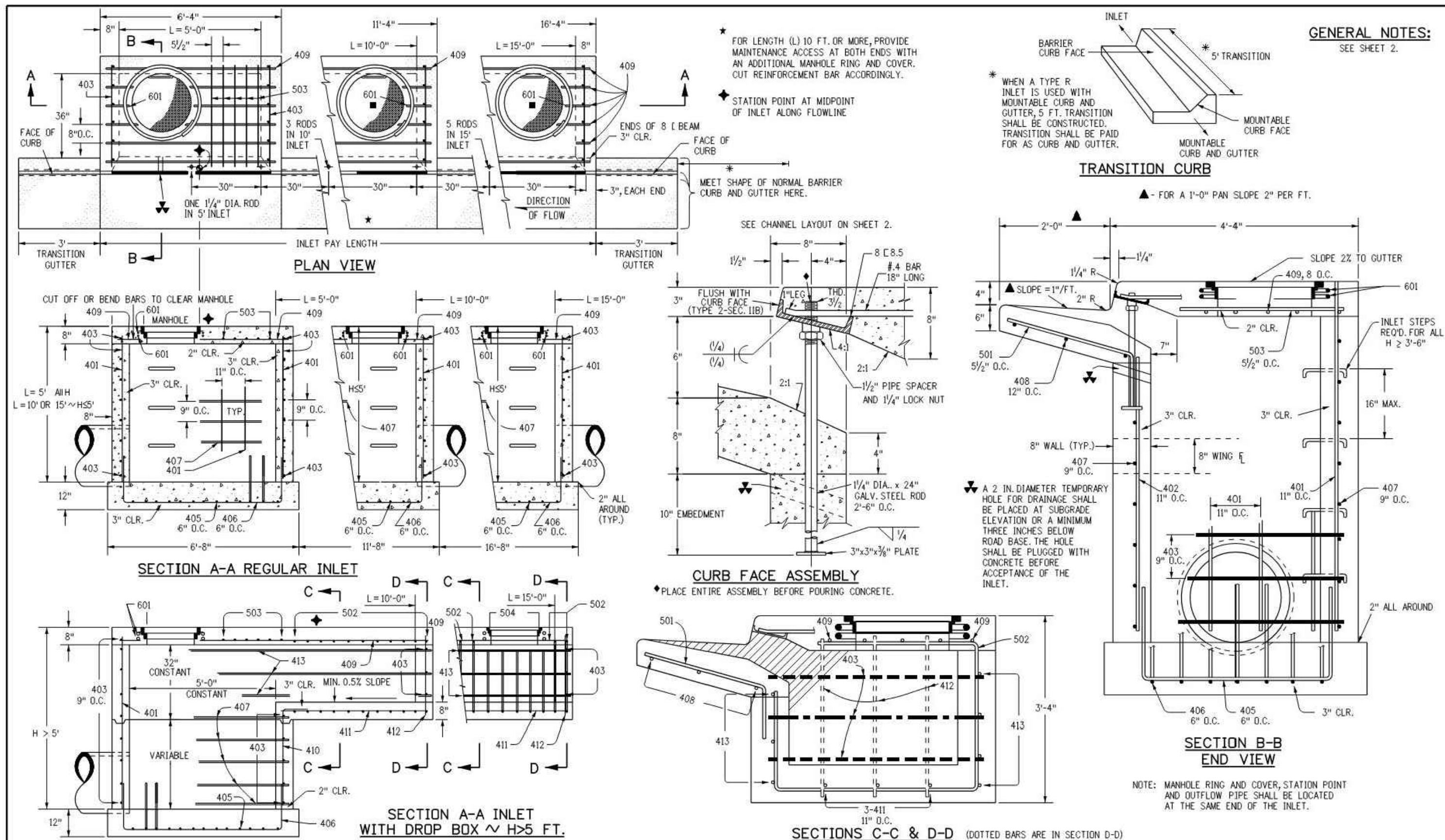


**S.A. MIRO INC.**  
CONSULTING ENGINEERS  
4582 South Ulster Street  
Suite 750, Denver, CO 80237  
303-741-3737  
www.samiro.com



Know what's below.  
Call before you dig.

DATE	DESCRIPTION	NO.



<b>Computer File Information</b>	<b>Sheet Revisions</b>	<b>Colorado Department of Transportation</b>	<b>CURB INLET TYPE R</b>	<b>STANDARD PLAN NO.</b>
Creation Date: 07/31/19	Date:	2829 West Howard Place	Issued by the Project Development Branch: July 31, 2019	M-604-12
Designer Initials: JBK	Comments:	CDOT HQ, 3rd Floor		Standard Sheet No. 1 of 2
Last Modification Date: 07/31/19		Denver, CO 80204		Project Sheet Number:
Detailer Initials: LTA		Phone: 303-757-9021 FAX: 303-757-9868		
CAD Ver.: MicroStation V8 Scale: Not to Scale Units: English		Project Development Branch      JBK		

MARK	BAR # OR SIZE	O.C. SPACING	TYPE	ALL INLETS			INLETS: H ≤ 5 FT.			INLETS: H > 5 FT.		
				NO. REQ'D.	LENGTH	NO. REQ'D.	LENGTH	NO. REQ'D.	LENGTH	NO. REQ'D.	LENGTH	
401	4	11"	II	15	7	21	26	7	21	26	7	
402	4	11"	II	7	7	13	18	7	13	18	7	
403	4	9"	II	4	4	4	4	4	4	4	4	
405	4	6"	VI	11	6	21	26	11	6	21	26	
406	4	6"	VIII	7	8	13	18	7	8	13	18	
407	4	9"	II	5	10	10	15	5	10	10	15	
408	4	12"	II	3	6	11	16	3	6	11	16	
409	4	8"	II	6	9	10	13	6	9	10	13	
410	4	11"	VII	6	9	10	13	6	9	10	13	
411	4	11"	II					3	5	3	10	
412	4	11"	II					3	2	3	2	
413	4	9"	II					7	10	7	15	
501	5	3 1/2"	IV	11	3	22	3	22	3	3	3	
502	5	3 1/2"	III	5	3	16	3	27	11	11	17	
503	5	3 1/2"	II	5	3	16	3	27	6	3	6	
504	5	3 1/2"	IX						5		8	
601	6	2 1/2"	V	2	8	2	8	2	8	2	8	
808.5	1	5	10	1	10	1	15	1	10	1	15	

\* VARIABLE REFER TO TABLE TWO.  
■ INCLUDE #4, 18 IN BARS (SEE CHANNEL LAYOUT).

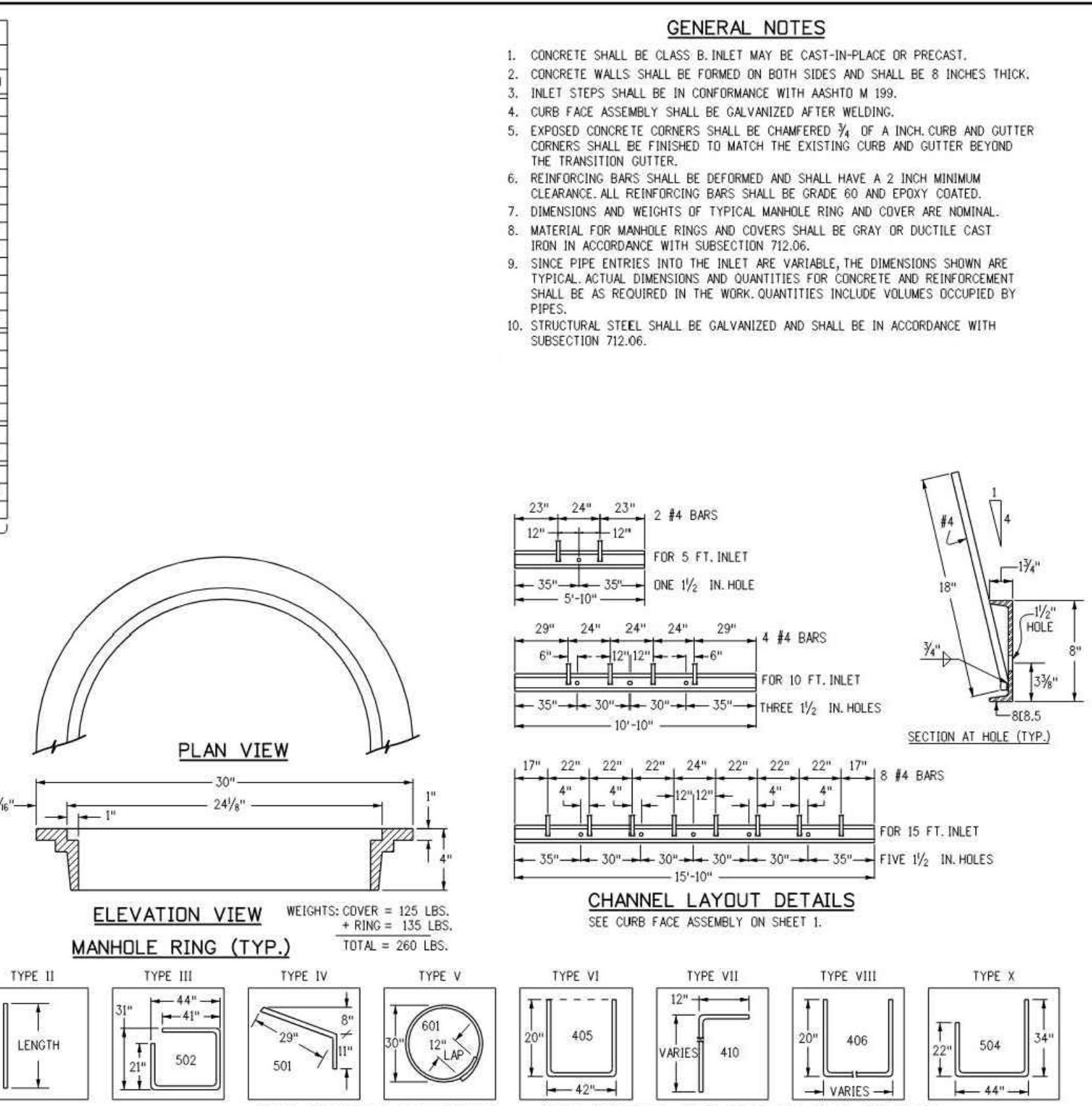
**TABLE ONE ~ BAR LIST FOR CURB INLETS, TYPE "R"**

"H"	LENGTH	REGULAR		DROP BOX		L = 5 FT.		L = 10 FT.		L = 15 FT.	
		NO. REQ'D.	STEEL LBS.	NO. REQ'D.	STEEL LBS.	CONC. CU. YDS.	STEEL LBS.	CONC. CU. YDS.	STEEL LBS.	CONC. CU. YDS.	STEEL LBS.
3'-0"	2'-8"	10	7	403	407	3.2	285	5.3	497	7.4	706
3'-0"	3'-2"	10	7			3.4	305	5.7	528	7.9	747
4'-0"	3'-8"	12	9			3.7	326	6.0	559	8.4	786
4'-0"	4'-2"	12	9			3.9	334	6.4	571	8.8	803
5'-0"	4'-8"	14	11			4.1	354	6.7	602	9.3	844
5'-0"	5'-2"	16	13			4.4	375	6.9	627	9.7	869
6'-0"	5'-8"	16	13			4.6	382	6.2	636	7.6	860
6'-0"	6'-2"	18	15			4.8	402	6.4	637	7.8	880
7'-0"	6'-8"	20	17			5.0	423	6.6	654	8.0	897
7'-0"	7'-2"	20	17			5.3	430	6.9	664	8.3	907
8'-0"	7'-8"	22	19			5.5	451	7.1	684	8.5	927
8'-0"	8'-2"	24	21			5.7	471	7.3	702	8.7	944
9'-0"	8'-8"	24	21			6.0	479	7.6	711	9.0	954
9'-0"	9'-2"	26	23			6.2	499	7.8	732	9.2	974
10'-0"	9'-8"	28	25			6.4	520	8.0	749	9.4	992
10'-0"	10'-2"	28	25			6.7	527	8.3	759	9.7	1001
11'-0"	10'-8"	30	27			6.9	547	8.5	779	9.9	1022

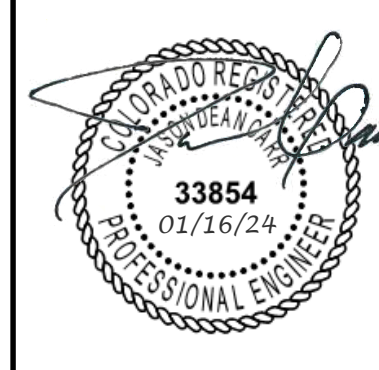
NOTES FOR L=5 FT., L=10 FT., AND L=15 FT.:  
REGULAR INLETS: TOTAL QUANTITIES NEEDED ARE OUTSIDE THE HEAVY BLACK LINE.  
DROP BOX INLETS: TOTAL QUANTITIES NEEDED ARE INSIDE THE HEAVY BLACK LINE.  
STEEL WEIGHTS DO NOT INCLUDE STRUCTURAL STEEL CHANNEL.

**TABLE TWO ~ BARS AND QUANTITIES VARIABLE WITH "H"**

<b>Computer File Information</b>	<b>Sheet Revisions</b>	<b>Colorado Department of Transportation</b>	<b>CURB INLET TYPE R</b>	<b>STANDARD PLAN NO.</b>
Creation Date: 07/31/19	Date:	2829 West Howard Place	Issued by the Project Development Branch: July 31, 2019	M-604-12
Designer Initials: JBK	Comments:	CDOT HQ, 3rd Floor		Standard Sheet No. 2 of 2
Last Modification Date: 07/31/19		Denver, CO 80204		Project Sheet Number:
Detailer Initials: LTA		Phone: 303-757-9021 FAX: 303-757-9868		
CAD Ver.: MicroStation V8 Scale: Not to Scale Units: English		Project Development Branch      JBK		



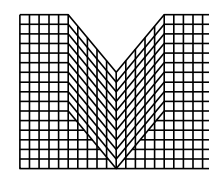
**PARKER NHC**  
**PARKER, CO 80134**  
**STORM DETAILS**



DESIGNED BY: SSM  
DRAWN BY: SSM  
CHECKED BY: JDC  
MIRO JOB NO. 22057  
DRAWING NUMBER:

**C-352**

PROJECT: PARKER NHC PARKER, CO 80134 STORM DETAILS  
DRAWING TITLE: STORM DETAILS  
FILE PATH: C:\Users\ssm\ACCDocs\S.A. Miro, Inc\Civil\Jobs\22057 Parker NHC\05 CAD\Plans and Details\C351-STRM-DTLS.dwg C352 - 1/16/2024

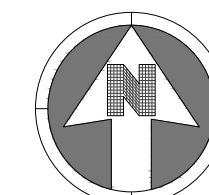


S.A. MIRO INC.  
CONSULTING ENGINEERS

4582 South Ulster Street  
Suite 750, Denver, CO 80237  
303-741-3737  
www.samiro.com



Know what's below.  
Call before you dig.



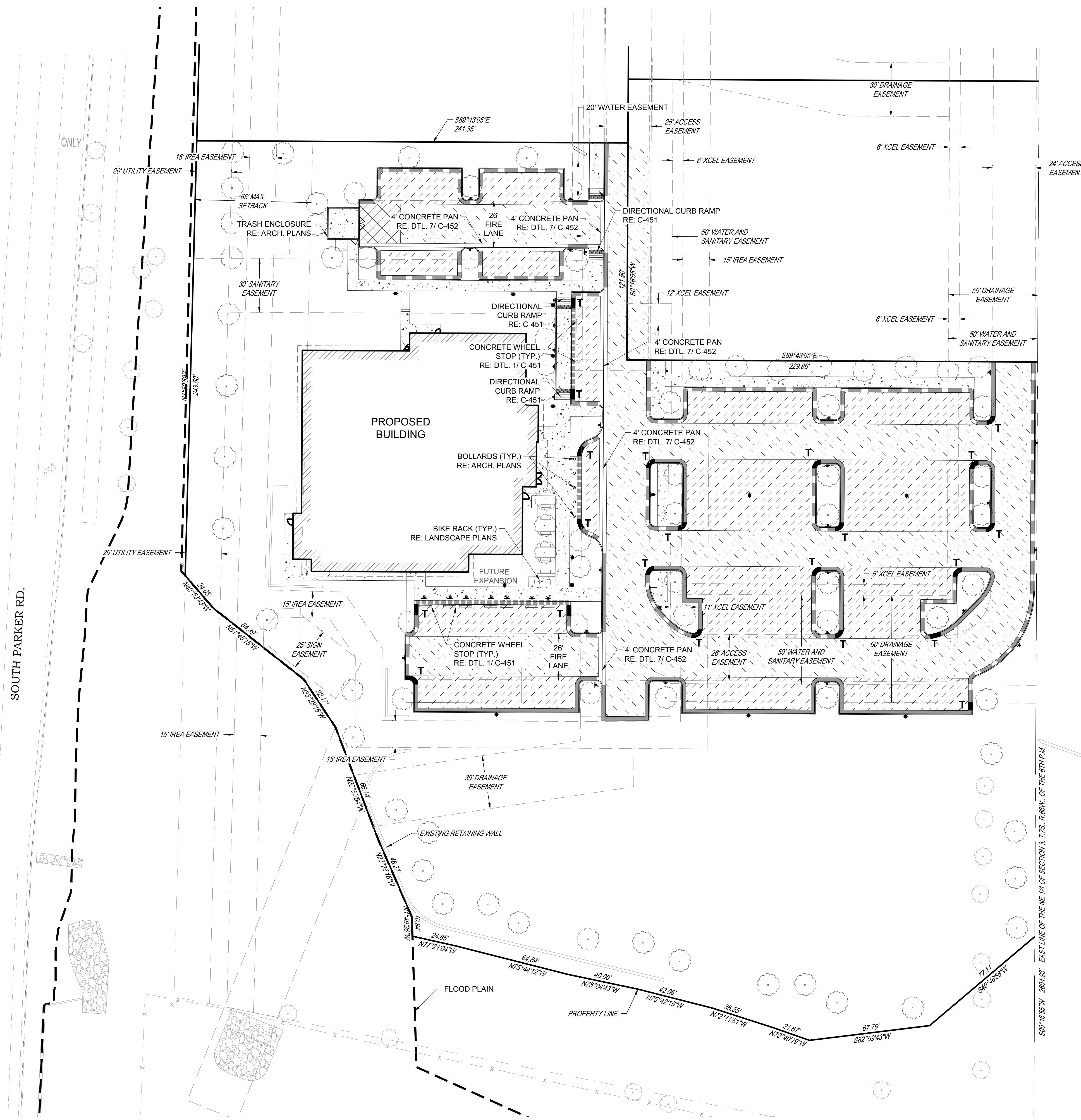
30 0 30  
SCALE: 1" = 30'

NOTES:

- SEE SHEET C-001 FOR CIVIL NOTES AND LEGEND.

LEGEND:

- PROPOSED 6" CATCH CURB AND GUTTER  
RE: C-451
- PROPOSED 6" SPILL CURB AND GUTTER  
RE: C-451
- PROPOSED FLUSH CURB AND GUTTER  
RE: C-451
- PROPOSED CURB TRANSITION
- PROPOSED 5.5" FULL DEPTH ASPHALT  
OR 4" ASPHALT WITH 6" AGGREGATE BASE  
RE: DTL. 1-A/ C-452
- 5" ASPHALT WITH 10" AGGREGATE BASE  
RE: DTL. 1-A/ C-452
- PROPOSED 6" CONCRETE PAVEMENT  
RE: DTL. 1-B/ C-452
- PROPOSED 7" CONCRETE PAVEMENT  
WITH 8" AGGREGATE BASE  
RE: DTL. 1-B/ C-452



THE TOWN OF PARKER REVIEW CONSTITUTES GENERAL COMPLIANCE WITH TOWN'S STANDARDS AND APPROVED VARIANCES, SUBJECT TO THESE PLANS BEING STAMPED, SIGNED, AND DATED BY THE PROFESSIONAL ENGINEER OF RECORD. REVIEW BY THE TOWN DOES NOT CONSTITUTE APPROVAL OF THE PLAN DESIGN OR ACCURACY AND CORRECTNESS OF ENGINEERING CALCULATIONS. ERRORS IN THE DESIGN OR CALCULATIONS REMAIN THE RESPONSIBILITY OF THE REGISTERED PROFESSIONAL ENGINEER WHOSE STAMP AND SIGNATURE ARE AFFIXED TO THIS DOCUMENT.

THIS REVIEW DOES NOT CONSTITUTE APPROVAL OF ANY PRIVATE ON-SITE IMPROVEMENTS WHICH MAY BE SHOWN. CONSTRUCTION CANNOT COMMENCE UNTIL ALL REQUIRED DRAINAGE/TRAFFIC REPORT(S), FINAL DEVELOPMENT PLAN(S), SPECIAL REVIEW(S), GRADING PERMIT, AND/OR OTHER PERMITS ARE COMPLETE, APPROVED AND ON FILE WITH THE TOWN OF PARKER

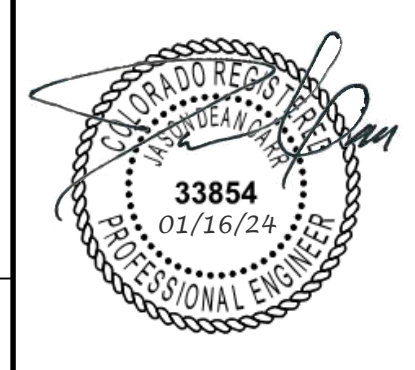
Town of Parker, Director of Engineering/Public Works Date

DATE	DESCRIPTION	NO.

PROJECT: PARKER NHC PARKER, CO 80134

DRAWING TITLE: PAVING PLAN

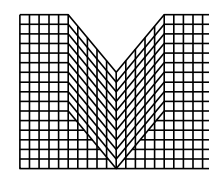
FILE PATH: C:\Users\ssm\ACCDocs\S.A. Miro, Inc\Civil\Jobs\22057 Parker NHC\05 CAD\Plans and Details\C411-PAVE-PLAN.dwg C411 - 1/16/2024



DESIGNED BY: SSM  
DRAWN BY: SSM  
CHECKED BY: JDC  
MIRO JOB NO. 22057

DRAWING NUMBER:

**C-411**



**S.A. MIRO INC.**  
CONSULTING ENGINEERS  
4582 South Ulster Street  
Suite 750, Denver, CO 80237  
303-741-3737  
www.samiro.com



Know what's below.  
**Call** before you dig.

DATE	DESCRIPTION	NO.

PROJECT: **PARKER NHC  
PARKER, CO 80134**

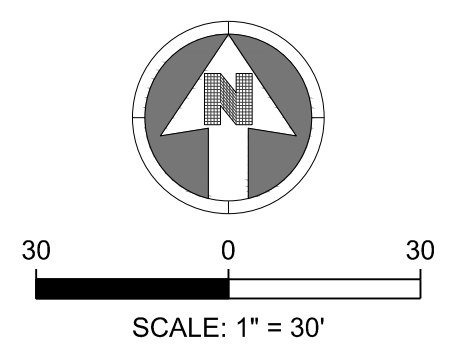
DRAWING TITLE: **SIGNAGE AND STRIPING PLAN**

FILE PATH: C:\Users\ssm\ACCDocs\S.A. Miro, Inc\Civil\Jobs\22057 Parker NHC\05 CAD\Plans and Details\C421-STRP-PLAN.dwg C421 - 1/16/2024



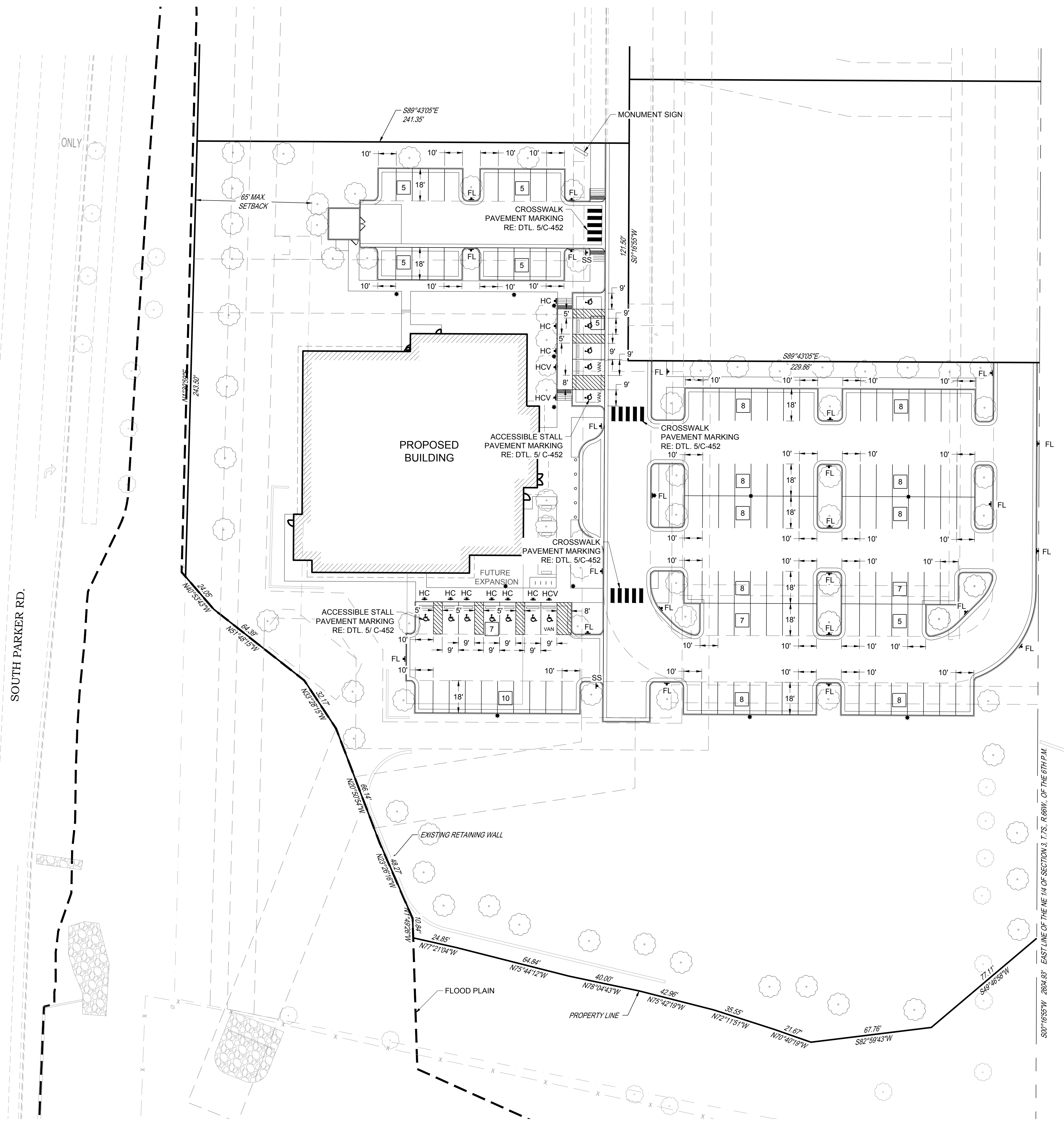
DESIGNED BY: SSM  
DRAWN BY: SSM  
CHECKED BY: JDC  
MIRO JOB NO. 22057

DRAWING NUMBER:  
**C-421**



NOTES:  
1. SEE SHEET C-001 FOR CIVIL NOTES AND LEGEND.

- LEGEND:
- ▲-FL PROPOSED "FIRE LANE" SIGN  
RE: DTL. 6/ C-452
  - ▲-HC PROPOSED "HANDICAP PARKING" SIGN  
RE: DTL. 6/ C-452
  - ▲-HCV PROPOSED "VAN ACCESSIBLE  
HANDICAP PARKING" SIGN  
RE: DTL. 6/ C-452
  - ▲-SS PROPOSED "STOP" SIGN  
RE: DTL. 6/ C-452
  - ▲ PROPOSED SIGN WITH BOLLARD BASE  
RE: DTL. 2/ C-451
  - 9 PARKING STALL COUNT  
9'X18' MINIMUM DIMENSIONS

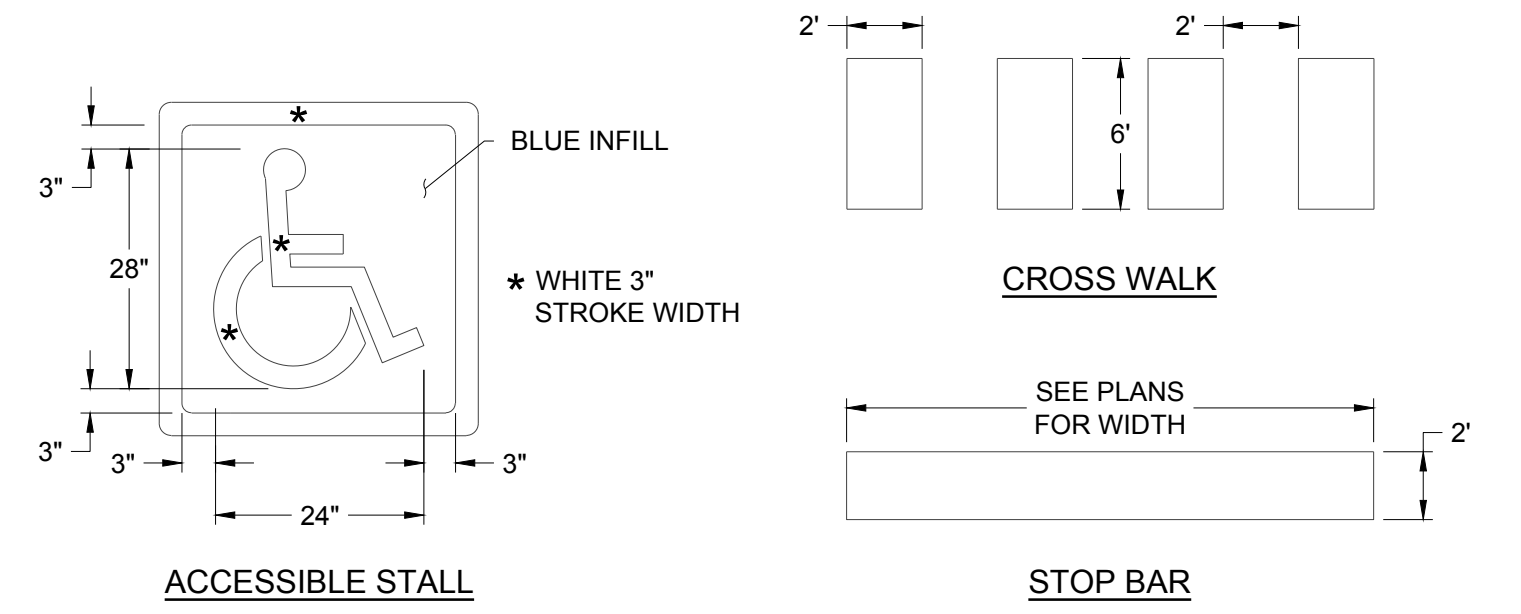


THE TOWN OF PARKER REVIEW CONSTITUTES GENERAL COMPLIANCE WITH TOWN'S STANDARDS AND APPROVED VARIANCES, SUBJECT TO THESE PLANS BEING STAMPED, SIGNED, AND DATED BY THE PROFESSIONAL ENGINEER OF RECORD. REVIEW BY THE TOWN DOES NOT CONSTITUTE APPROVAL OF THE PLAN DESIGN OR ACCURACY AND CORRECTNESS OF ENGINEERING CALCULATIONS. ERRORS IN THE DESIGN OR CALCULATIONS REMAIN THE RESPONSIBILITY OF THE REGISTERED PROFESSIONAL ENGINEER WHOSE STAMP AND SIGNATURE ARE AFFIXED TO THIS DOCUMENT.

THIS REVIEW DOES NOT CONSTITUTE APPROVAL OF ANY PRIVATE ON-SITE IMPROVEMENTS WHICH MAY BE SHOWN. CONSTRUCTION CANNOT COMMENCE UNTIL ALL REQUIRED DRAINAGE/TRAFFIC REPORT(S), FINAL DEVELOPMENT PLAN(S), SPECIAL REVIEW(S), GRADING PERMIT, AND/OR OTHER PERMITS ARE COMPLETE, APPROVED AND ON FILE WITH THE TOWN OF PARKER

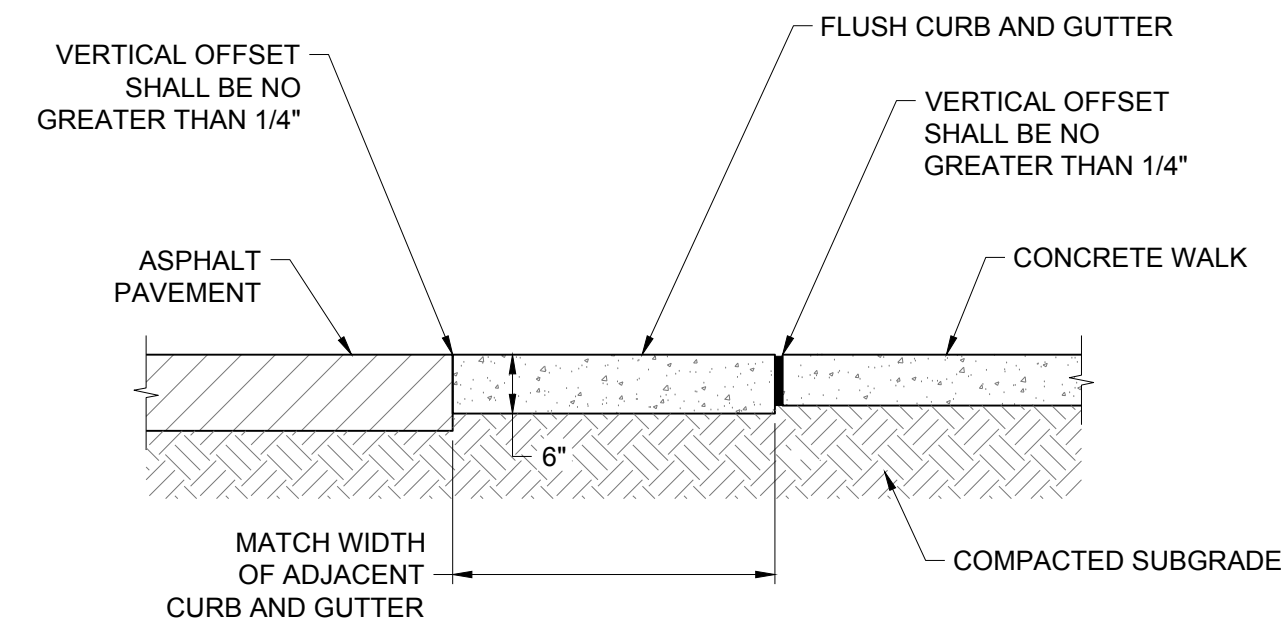
Town of Parker, Director of Engineering/Public Works \_\_\_\_\_ Date \_\_\_\_\_



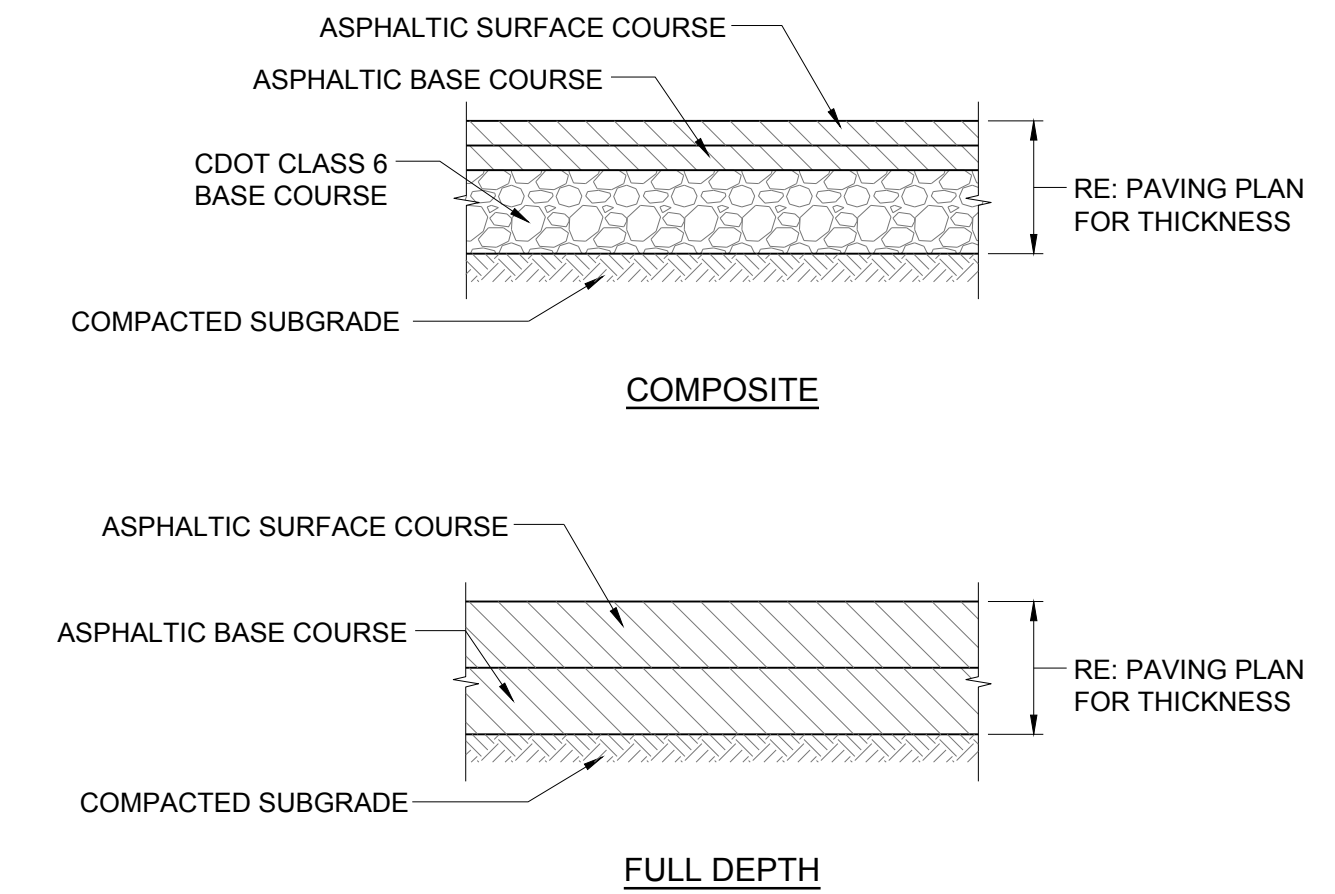


**NOTES:**  
 1. WHITE PAINT OR THERMOPLASTIC MARKINGS SHALL BE USED UNLESS OTHERWISE SPECIFIED BY AUTHORITY HAVING JURISDICTION. ALSO COMPARE AGAINST PROJECT SPECIFIC CIVIL SPECS TO ENSURE THEY MATCH.

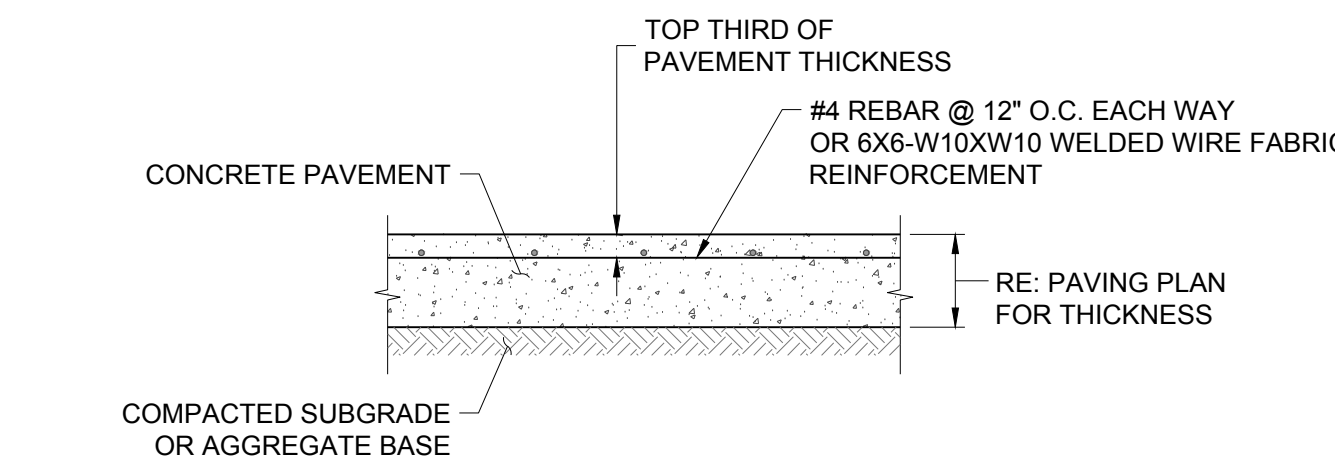
5 PAVEMENT MARKINGS DETAIL NO SCALE



3 FLUSH CURB AND GUTTER DETAIL NO SCALE

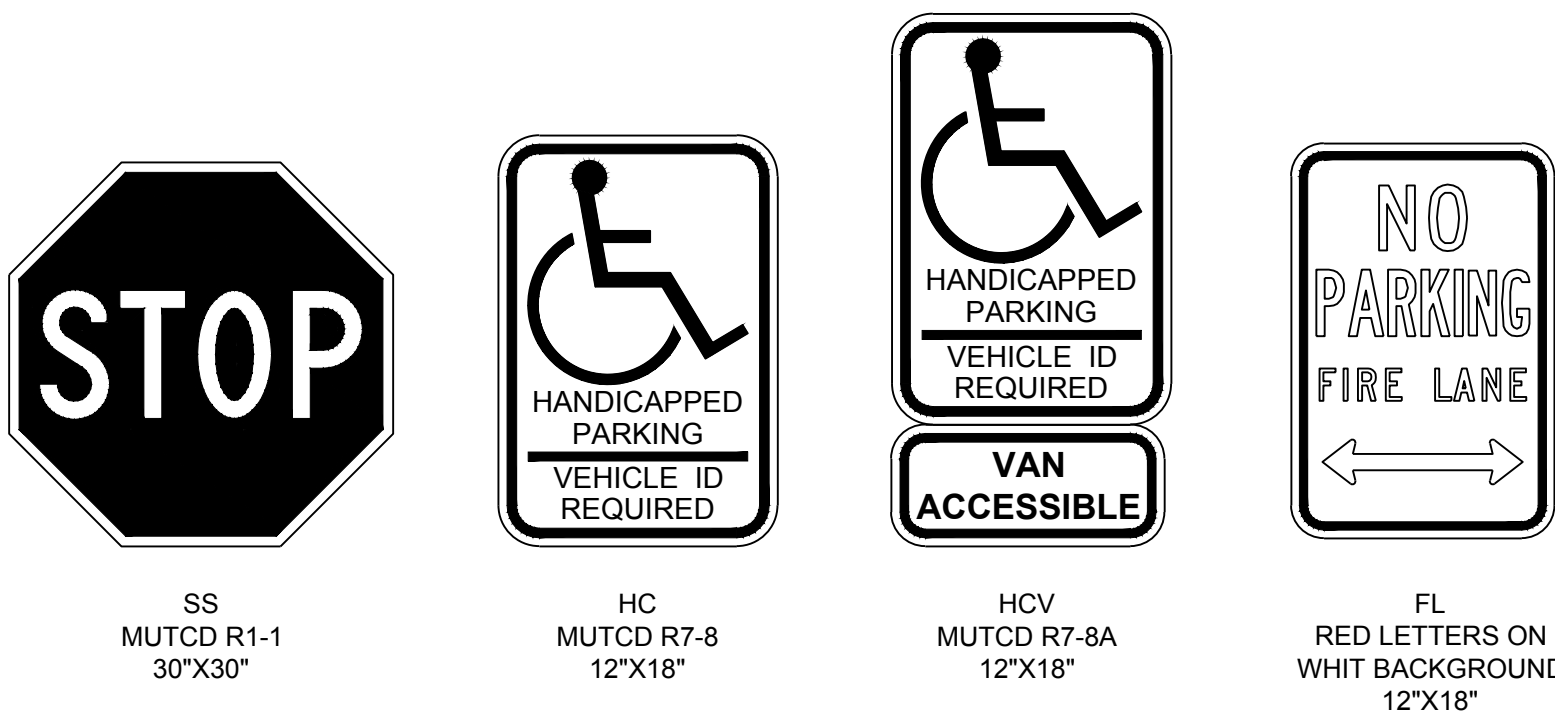


A ASPHALT PAVEMENT SECTIONS NO SCALE

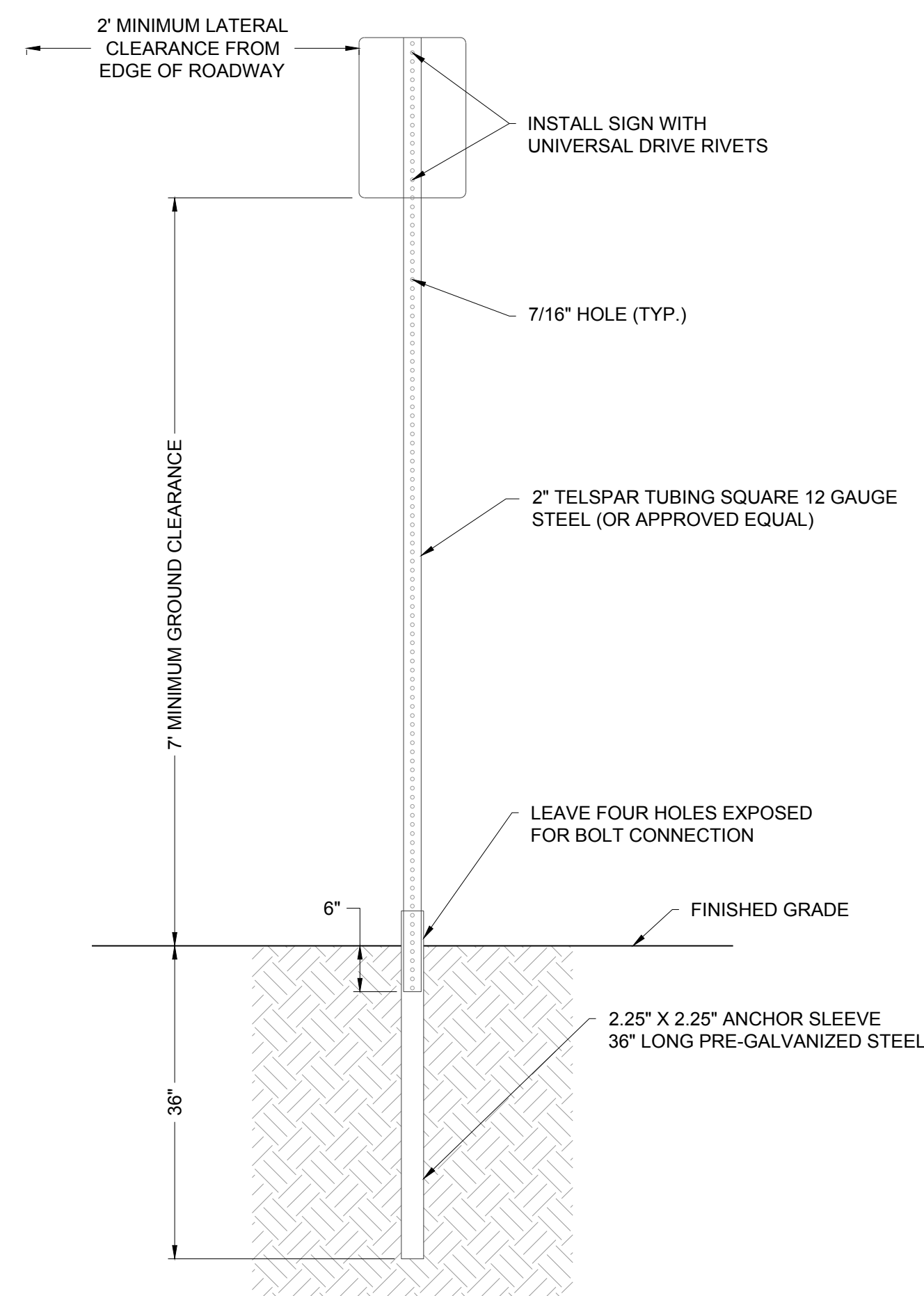


B CONCRETE PAVEMENT SECTION NO SCALE

1 PAVEMENT SECTIONS NO SCALE

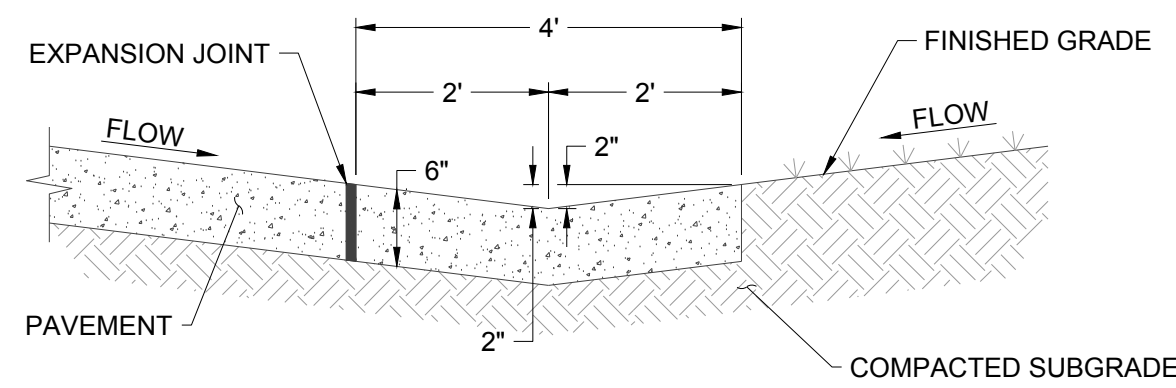


6 SIGN DETAILS NO SCALE

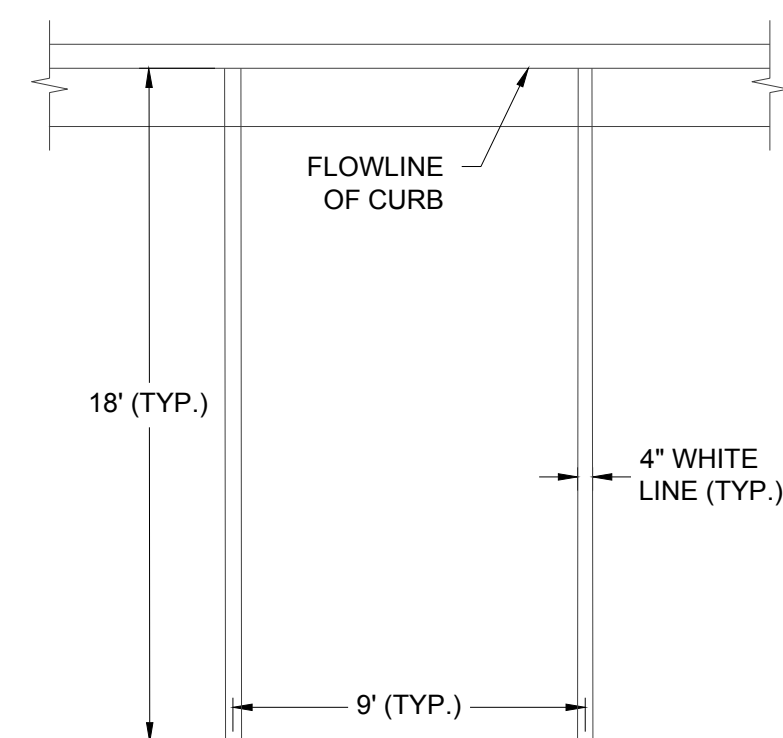


**NOTES:**  
 1. SIGN POST INSTALLATION SHALL FOLLOW THE MANUFACTURE'S SPECIFICATIONS.  
 2. ALL TUBING SHALL BE #12 U.S. STANDARD GAUGE WALL THICKNESS.  
 3. SIGN AND POST SHALL BE PLUMB AND FREE OF VERTICAL AND LATERAL MOVEMENT.  
 4. SIGN SHALL BE PARALLEL TO FLOWLINE FOR PARKING STALL INSTALLATION AND 90° FOR ROADWAY INSTALLATION.  
 5. DRIVE ANCHOR POST INTO THE GROUND TOGETHER, LEAVING FOUR HOLES EXPOSED FOR BOLT CONNECTION. FOR HAND INSTALLATION, DRIVE CAP OF PROPER SIZE SHALL BE USED TO PREVENT DAMAGE TO TUBING. SIDEWALK SHALL BE POURED AROUND A PVC SLEEVE. EXISTING SIDEWALK SHALL BE CORE DRILLED FOR A MINIMUM OF A 4" PVC SLEEVE.  
 6. INSERT SIGN POST INTO ANCHOR SLEEVE APPROXIMATELY 6" AND BOLT IN PLACE.  
 7. A 10" POST WILL WORK FOR SIGNS OF 30" OR LESS. ANY SIGNS LARGER WILL REQUIRE A 11" OR 12" POST DEPENDING ON SIGN SIZE TO MAINTAIN 7' OF GROUND CLEARANCE.

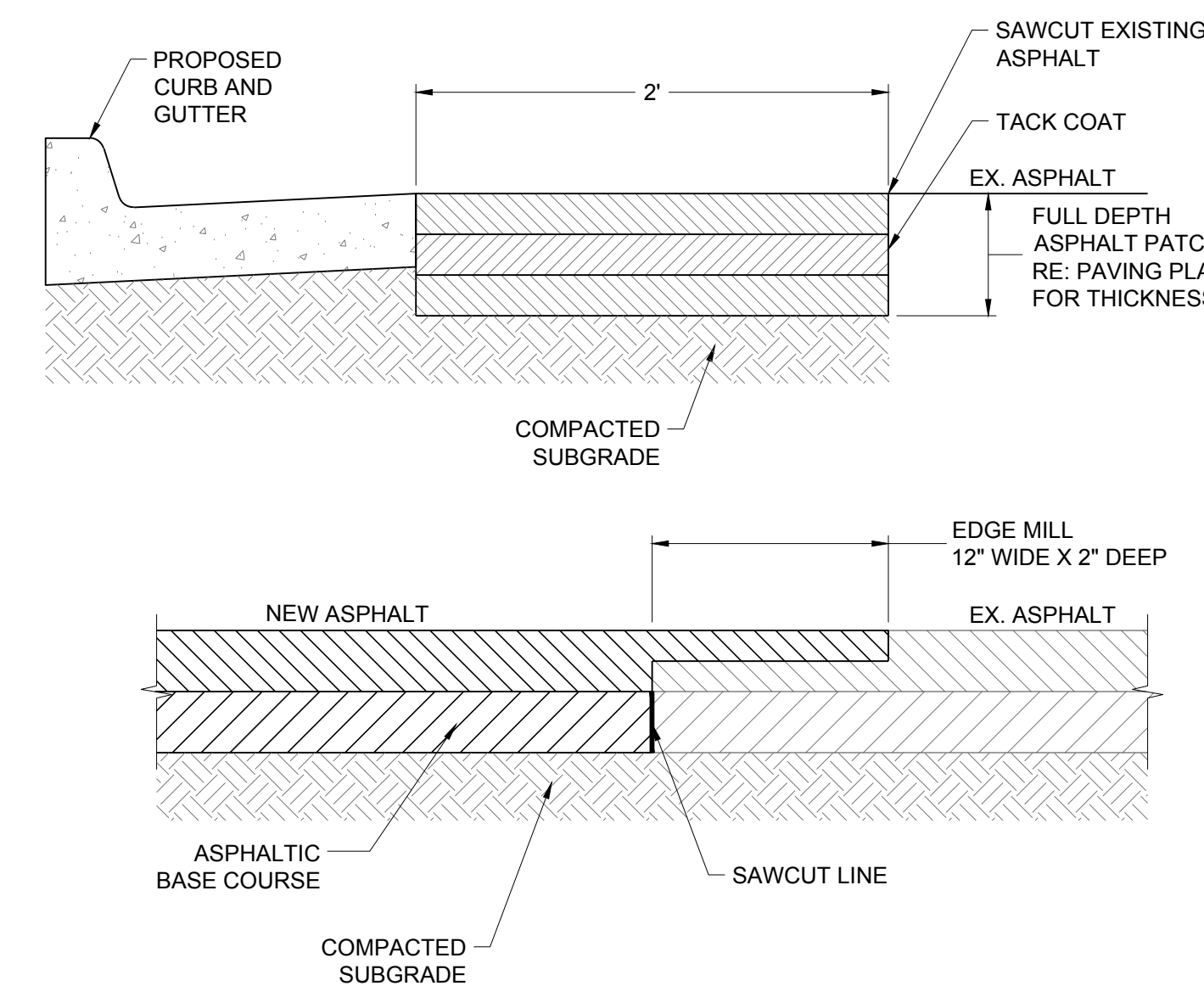
4 SIGN SUPPORT DETAIL NO SCALE



7 4' CONCRETE PAN DETAIL NO SCALE



8 TYPICAL PARKING STALL DETAIL NO SCALE



2 ASPHALT PATCHBACK DETAIL NO SCALE

THE TOWN OF PARKER REVIEW CONSTITUTES GENERAL COMPLIANCE WITH TOWN'S STANDARDS AND APPROVED VARIANCES. SUBJECT TO THESE PLANS BEING STAMPED, SIGNED, AND DATED BY THE PROFESSIONAL ENGINEER OF RECORD. REVIEW BY THE TOWN DOES NOT CONSTITUTE APPROVAL OF THE PLAN DESIGN OR ACCURACY AND CORRECTNESS OF ENGINEERING CALCULATIONS. ERRORS IN THE DESIGN OR CALCULATIONS REMAIN THE RESPONSIBILITY OF THE REGISTERED PROFESSIONAL ENGINEER WHOSE STAMP AND SIGNATURE ARE AFFIXED TO THIS DOCUMENT.

THIS REVIEW DOES NOT CONSTITUTE APPROVAL OF ANY PRIVATE ON-SITE IMPROVEMENTS WHICH MAY BE SHOWN. CONSTRUCTION CANNOT COMMENCE UNTIL ALL REQUIRED DRAINAGE/TRAFFIC REPORT(S), FINAL DEVELOPMENT PLAN(S), SPECIAL REVIEW(S), GRADING PERMIT, AND/OR OTHER PERMITS ARE COMPLETE, APPROVED AND ON FILE WITH THE TOWN OF PARKER

Town of Parker, Director of Engineering/Public Works Date

DATE	DESCRIPTION	NO.

PROJECT: PARKER NHC PARKER, CO 80134  
 DRAWING TITLE: SITE DETAILS  
 FILE PATH: C:\Users\ssm\ACCDocs\S.A. Miro, Inc\Civil\Jobs\22057 Parker NHC\05 CAD\Plans and Details\C451-SITE DTL.S.dwg C452 - 1/16/2024



DESIGNED BY: SSM  
 DRAWN BY: SSM  
 CHECKED BY: JDC  
 MIRO JOB NO. 22057

DRAWING NUMBER: C-452