

S.A. MIRO INC.
CONSULTING ENGINEERS
4582 South Ulster Street
Suite 750, Denver, CO 80237
303-741-3737
www.samiro.com



Know what's below.
Call before you dig.

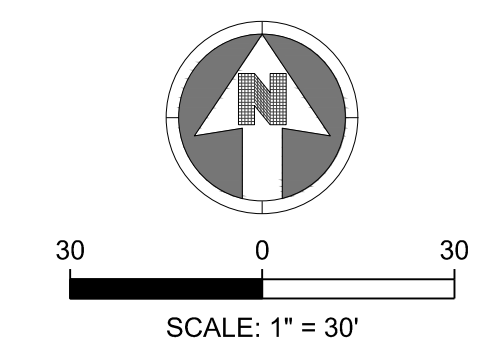
DATE: _____
DESCRIPTION: _____
NO. _____

PROJECT: **PARKER NHC
PARKER, CO 80134**
DRAWING TITLE: **INITIAL EROSION CONTROL PLAN**
FILE PATH: C:\Users\ssm\ACCDocs\S.A. Miro, Inc\Civil\Jobs\22057 Parker NHC\05 CAD\Plans and Details\C241-INITIAL-EROS-PLAN.dwg C241 - 10/30/2023



DESIGNED BY: SSM
DRAWN BY: SSM
CHECKED BY: JDC
MIRO JOB NO. 22057

DRAWING NUMBER:
C-241



NOTES:

- SEE SHEETS C-251-C-259 FOR EROSION CONTROL NOTES, LEGEND AND DETAILS.
- THE VTC PAD FOR A CWA DOES NOT NEED TO CONFORM TO THE FORMAL VTC DETAIL.
- THE TRUE LOCATION OF THE CWA MAY BE DETERMINED BY THE TOWN AND THE ECS.
- LOT PROTECTION (LP) IS REQUIRED ON COMMERCIAL LOTS WHEN COMPLETION OF LANDSCAPING IS NOT POSSIBLE AND PRIOR TO ISSUANCE OF A CERTIFICATE OF OCCUPANCY.
- THE TRUE LOCATION OF THE PORTABLE TOILET PROTECTION (PTP) MAY BE DETERMINED BY THE TOWN AND THE ECS.
- MASONRY WORK PROTECTION IS REQUIRED FOR CONSTRUCTION OF BUILDINGS.
- ANY ONSITE BULK FUEL STORAGE REQUIRES A FIRE LIFE SAFETY PERMIT FROM THE TOWN OF PARKER PRIOR TO INSTALLATION.

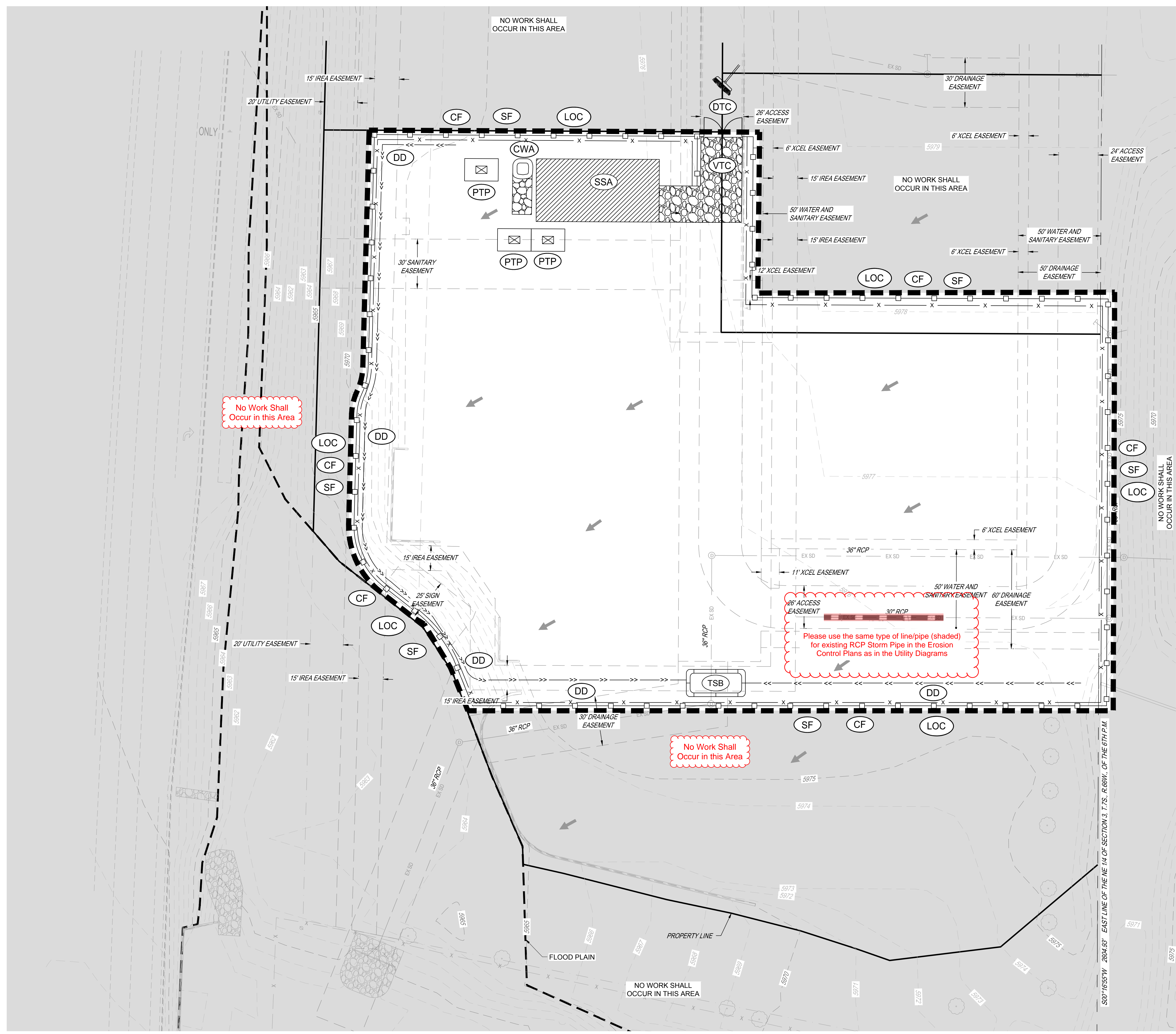
LEGEND:

	CD	CHECK DAM
	CF	CONSTRUCTION FENCE
	CP	CULVERT PROTECTION
	CWA	CONCRETE WASHOUT AREA
	D	DEWATERING
	DD	DIVERSION DITCH
	DP	DETENTION POND PROTECTION
	DTC	DEBRIS TRASH CONTROL
	ECB	EROSION CONTROL BLANKET
	IPAN	INLET PROTECTION FOR AREA INLETS NOT IN PAVEMENT
	IPAP	INLET PROTECTION FOR AREA INLETS IN PAVEMENT
	PCOG	INLET PROTECTION, CURB ON-GRADE, TYPE R INLET
	PCOS	INLET PROTECTION, CURB ON SUMP, TYPE R INLET
	LP	LOT PROTECTION
	MWP	MASONRY WORK PROTECTION
	PTP	PORTABLE TOILET PROTECTION
	RCSC	ROUGH CUT STREET CONTROL
	RS	ROCK SOCK
	RSS	ROCK SOCK IN SWALE
	SB	STRAW BALE
	SCL	SEDIMENT CONTROL LOGS
	SF	SILT FENCE
	SMC	SEEDING, MULCHING AND CRIMPING
	SR	SURFACE ROUGHING
	SSA	STABILIZED STAGING AREA
	STP	SIDEWALK TRANSITION PROTECTION
	TI	TEMPORARY IRRIGATION
	TSB	TEMPORARY SEDIMENT BASIN
	VTC	VEHICLE TRACKING CONTROL
	LOC	LIMITS OF CONSTRUCTION
		FLOW DIRECTION ARROW

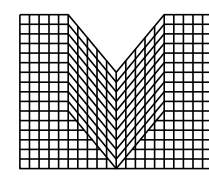
THE TOWN OF PARKER REVIEW CONSTITUTES GENERAL COMPLIANCE WITH TOWN'S STANDARDS AND APPROVED VARIANCES. SUBJECT TO THESE PLANS BEING STAMPED, SIGNED, AND DATED BY THE PROFESSIONAL ENGINEER OF RECORD. REVIEW BY THE TOWN DOES NOT CONSTITUTE APPROVAL OF THE PLAN DESIGN OR ACCURACY AND CORRECTNESS OF ENGINEERING CALCULATIONS. ERRORS IN THE DESIGN OR CALCULATIONS REMAIN THE RESPONSIBILITY OF THE REGISTERED PROFESSIONAL ENGINEER WHOSE STAMP AND SIGNATURE ARE AFFIXED TO THIS DOCUMENT.

THIS REVIEW DOES NOT CONSTITUTE APPROVAL OF ANY PRIVATE ON-SITE IMPROVEMENTS WHICH MAY BE SHOWN. CONSTRUCTION CANNOT COMMENCE UNTIL ALL REQUIRED DRAINAGE/TRAFFIC REPORT(S), FINAL DEVELOPMENT PLAN(S), SPECIAL REVIEW(S), GRADING PERMIT, AND/OR OTHER PERMITS ARE COMPLETE, APPROVED AND ON FILE WITH THE TOWN OF PARKER

Town of Parker, Director of Engineering/Public Works _____ Date _____



Town of Parker, Director of Engineering/Public Works _____ Date _____



S.A. MIRO INC.
CONSULTING ENGINEERS

4582 South Ulster Street
Suite 750, Denver, CO 80237
303-741-3737
www.samiro.com



Know what's below.
Call before you dig.

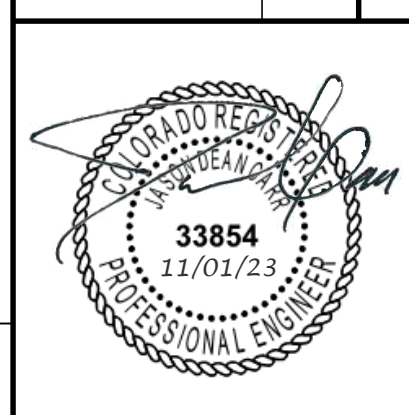
DATE

DESCRIPTION

NO.

PROJECT:

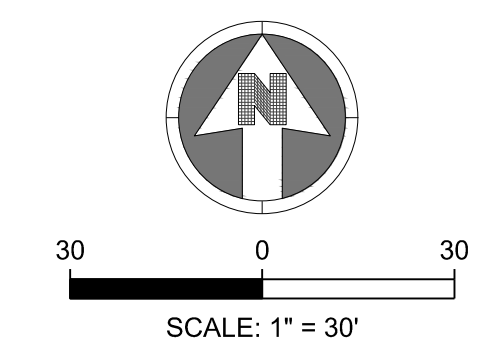
DRIVING TITLE:



DESIGNED BY: SSM
DRAWN BY: SSM
CHECKED BY: JDC
MIRO JOB NO. 22057

DRAWING NUMBER:

C-242



NOTES:

- SEE SHEETS C-251-C-259 FOR EROSION CONTROL, LEGEND AND DETAILS.
- THE VTC PAD FOR A CWA DOES NOT NEED TO CONFORM TO THE FORMAL VTC DETAIL.
- THE TRUE LOCATION OF THE CWA MAY BE DETERMINED BY THE TOWN AND THE ECS.
- LOT PROTECTION (LP) IS REQUIRED ON COMMERCIAL LOTS WHEN COMPLETION OF LANDSCAPING IS NOT POSSIBLE AND PRIOR TO ISSUANCE OF A CERTIFICATE OF OCCUPANCY.
- THE TRUE LOCATION OF THE PORTABLE TOILET PROTECTION (PTP) MAY BE DETERMINED BY THE TOWN AND THE ECS.
- MASONRY WORK PROTECTION IS REQUIRED FOR CONSTRUCTION OF BUILDINGS.
- ANY ONSITE BULK FUEL STORAGE REQUIRES A FIRE LIFE SAFETY PERMIT FROM THE TOWN OF PARKER PRIOR TO INSTALLATION.

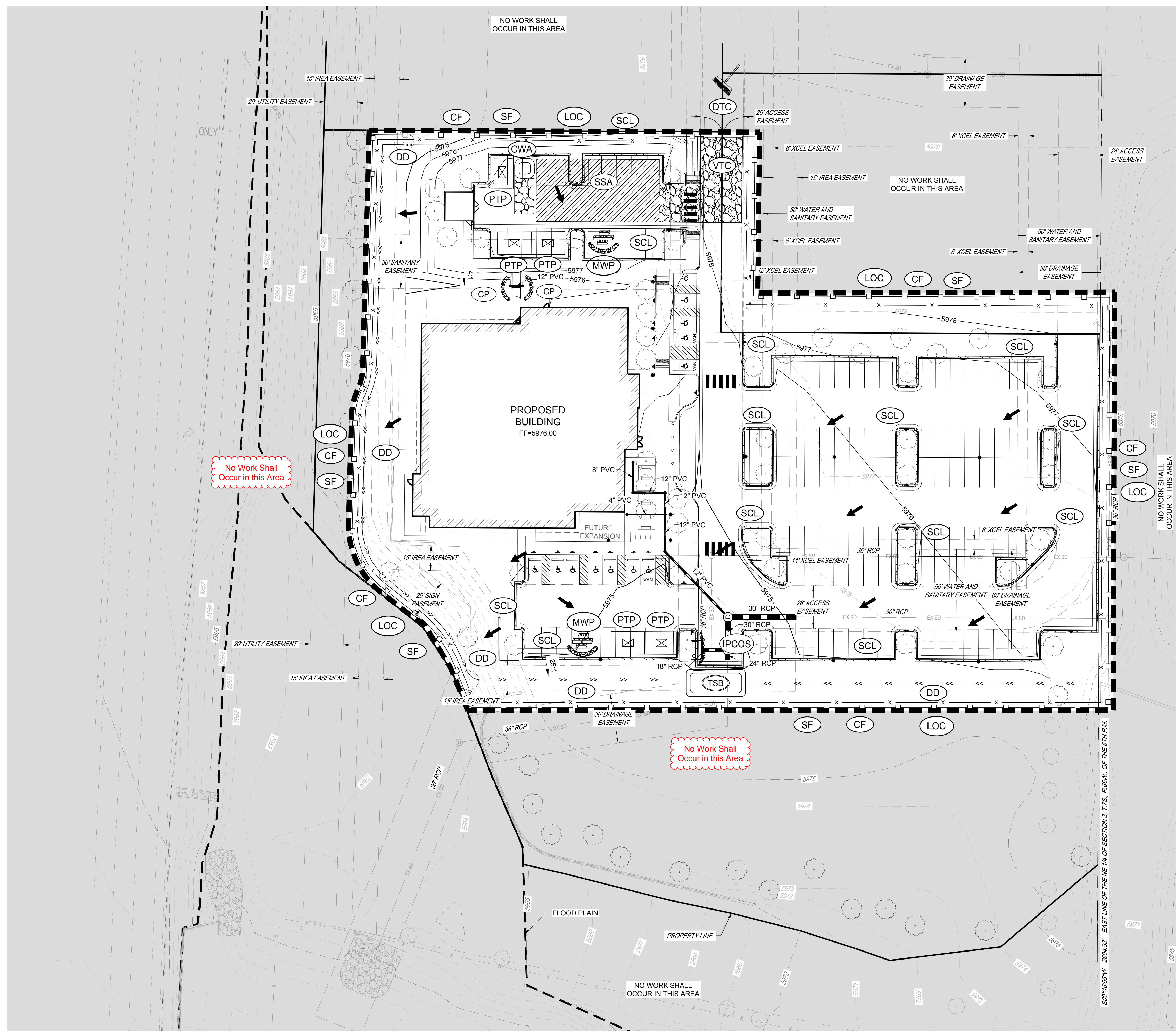
LEGEND:

	CD	CHECK DAM
	CF	CONSTRUCTION FENCE
	CP	CULVERT PROTECTION
	CWA	CONCRETE WASHOUT AREA
	D	DEWATERING
	DD	DIVERSION DITCH
	DP	DETENTION POND PROTECTION
	DTC	DEBRIS TRASH CONTROL
	ECB	EROSION CONTROL BLANKET
	IPAN	INLET PROTECTION FOR AREA INLETS NOT IN PAVEMENT
	IPAP	INLET PROTECTION FOR AREA INLETS IN PAVEMENT
	PCOG	INLET PROTECTION, CURB ON-GRADE, TYPE R INLET
	PCOS	INLET PROTECTION, CURB ON SUMP, TYPE R INLET
	LP	LOT PROTECTION
	MWP	MASONRY WORK PROTECTION
	PTP	PORTABLE TOILET PROTECTION
	RCSC	ROUGH CUT STREET CONTROL
	RS	ROCK SOCK
	RSS	ROCK SOCK IN SWALE
	SB	STRAW BALE
	SCL	SEDIMENT CONTROL LOGS
	SF	SILT FENCE
	SMC	SEEDING, MULCHING AND CRIMPING
	SR	SURFACE ROUGHING
	SSA	STABILIZED STAGING AREA
	STP	SIDEWALK TRANSITION PROTECTION
	TI	TEMPORARY IRRIGATION
	TSB	TEMPORARY SEDIMENT BASIN
	VTC	VEHICLE TRACKING CONTROL
	LOC	LIMITS OF CONSTRUCTION
		FLOW DIRECTION ARROW

THE TOWN OF PARKER REVIEW CONSTITUTES GENERAL COMPLIANCE WITH TOWN'S STANDARDS AND APPROVED VARIANCES. SUBJECT TO THESE PLANS BEING STAMPED, SIGNED, AND DATED BY THE PROFESSIONAL ENGINEER OF RECORD. REVIEW BY THE TOWN DOES NOT CONSTITUTE APPROVAL OF THE PLAN DESIGN OR ACCURACY AND CORRECTNESS OF ENGINEERING CALCULATIONS. ERRORS IN THE DESIGN OR CALCULATIONS REMAIN THE RESPONSIBILITY OF THE REGISTERED PROFESSIONAL ENGINEER WHOSE STAMP AND SIGNATURE ARE AFFIXED TO THIS DOCUMENT.

THIS REVIEW DOES NOT CONSTITUTE APPROVAL OF ANY PRIVATE ON-SITE IMPROVEMENTS WHICH MAY BE SHOWN. CONSTRUCTION CANNOT COMMENCE UNTIL ALL REQUIRED DRAINAGE/TRAFFIC REPORT(S), FINAL DEVELOPMENT PLAN(S), SPECIAL REVIEW(S), GRADING PERMIT, AND/OR OTHER PERMITS ARE COMPLETE, APPROVED AND ON FILE WITH THE TOWN OF PARKER

Town of Parker, Director of Engineering/Public Works _____ Date _____



No Work Shall Occur in this Area

No Work Shall Occur in this Area

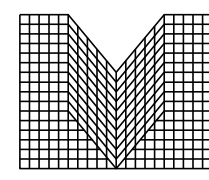
NO WORK SHALL OCCUR IN THIS AREA

NO WORK SHALL OCCUR IN THIS AREA

NO WORK SHALL OCCUR IN THIS AREA

NO WORK SHALL OCCUR IN THIS AREA

S00°16'55\"/>



S.A. MIRO INC.
CONSULTING ENGINEERS

4582 South Ulster Street
Suite 750, Denver, CO 80237
303-741-3737
www.samiro.com



Know what's below.
Call before you dig.

DATE

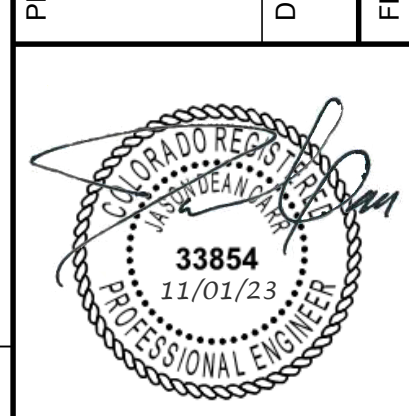
DESCRIPTION

NO.

PROJECT:

DRAWING TITLE:

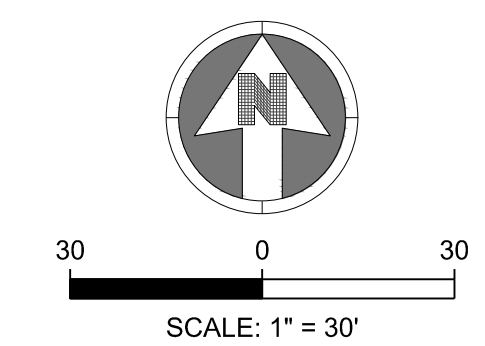
FILE PATH: C:\Users\ssm\ACD\Docs\S.A. Miro, Inc\Civil\Jobs\22057 Parker NHC\05 CAD\Plans and Details\C243-FINAL-EROS-PLAN.dwg C243 - 10/30/2023



DESIGNED BY: SSM
DRAWN BY: SSM
CHECKED BY: JDC
MIRO JOB NO. 22057

DRAWING NUMBER:

C-243



NOTES:

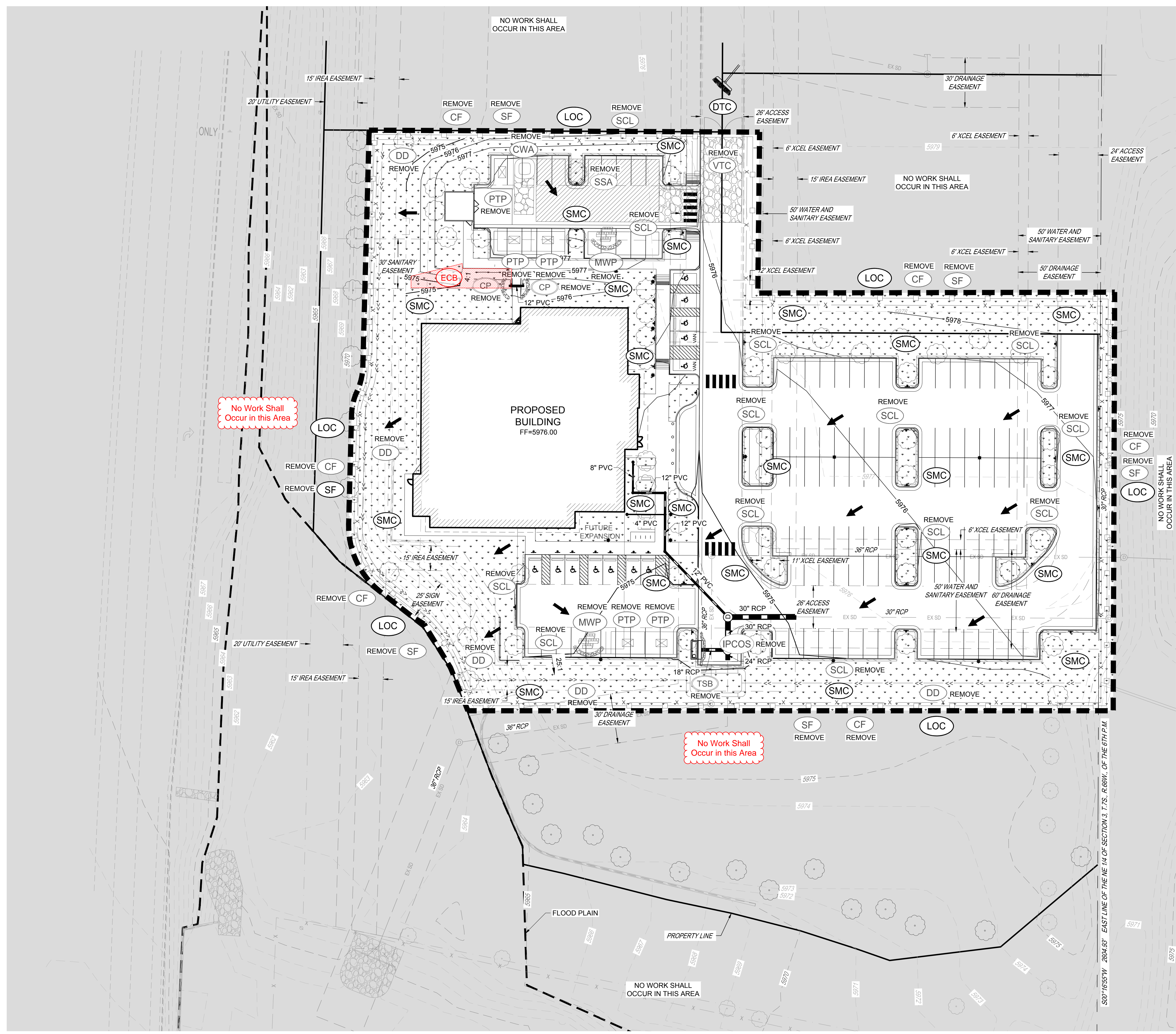
- SEE SHEETS C-251-C-259 FOR EROSION CONTROL NOTES, LEGEND AND DETAILS.
- THE VTC PAD FOR A CWA DOES NOT NEED TO CONFORM TO THE FORMAL VTC DETAIL.
- THE TRUE LOCATION OF THE CWA MAY BE DETERMINED BY THE TOWN AND THE ECS.
- LOT PROTECTION (LP) IS REQUIRED ON COMMERCIAL LOTS WHEN COMPLETION OF LANDSCAPING IS NOT POSSIBLE AND PRIOR TO ISSUANCE OF A CERTIFICATE OF OCCUPANCY.
- THE TRUE LOCATION OF THE PORTABLE TOILET PROTECTION (PTP) MAY BE DETERMINED BY THE TOWN AND THE ECS.
- MASONRY WORK PROTECTION IS REQUIRED FOR CONSTRUCTION OF BUILDINGS.
- ANY ONSITE BULK FUEL STORAGE REQUIRES A FIRE LIFE SAFETY PERMIT FROM THE TOWN OF PARKER PRIOR TO INSTALLATION.

LEGEND:

	CD	CHECK DAM
	CF	CONSTRUCTION FENCE
	CP	CULVERT PROTECTION
	CWA	CONCRETE WASHOUT AREA
	D	DEWATERING
	DD	DIVERSION DITCH
	DP	DETENTION POND PROTECTION
	DTC	DEBRIS TRASH CONTROL
	ECB	EROSION CONTROL BLANKET
	IPAN	INLET PROTECTION FOR AREA INLETS NOT IN PAVEMENT
	IPAP	INLET PROTECTION FOR AREA INLETS IN PAVEMENT
	PCOG	INLET PROTECTION, CURB ON-GRADE, TYPE R INLET
	PCOS	INLET PROTECTION, CURB ON SUMP, TYPE R INLET
	LP	LOT PROTECTION
	MWP	MASONRY WORK PROTECTION
	PTP	PORTABLE TOILET PROTECTION
	RCSC	ROUGH CUT STREET CONTROL
	RS	ROCK SOCK
	RSS	ROCK SOCK IN SWALE
	SB	STRAW BALE
	SCL	SEDIMENT CONTROL LOGS
	SF	SILT FENCE
	SMC	SEEDING, MULCHING AND CRIMPING
	SR	SURFACE ROUGHING
	SSA	STABILIZED STAGING AREA
	STP	SIDEWALK TRANSITION PROTECTION
	TI	TEMPORARY IRRIGATION
	TSB	TEMPORARY SEDIMENT BASIN
	VTC	VEHICLE TRACKING CONTROL
	LOC	LIMITS OF CONSTRUCTION
		FLOW DIRECTION ARROW

THE TOWN OF PARKER REVIEW CONSTITUTES GENERAL COMPLIANCE WITH TOWN'S STANDARDS AND APPROVED VARIANCES. SUBJECT TO THESE PLANS BEING STAMPED, SIGNED, AND DATED BY THE PROFESSIONAL ENGINEER OF RECORD. REVIEW BY THE TOWN DOES NOT CONSTITUTE APPROVAL OF THE PLAN DESIGN OR ACCURACY AND CORRECTNESS OF ENGINEERING CALCULATIONS. ERRORS IN THE DESIGN OR CALCULATIONS REMAIN THE RESPONSIBILITY OF THE REGISTERED PROFESSIONAL ENGINEER WHOSE STAMP AND SIGNATURE ARE AFFIXED TO THIS DOCUMENT.

THIS REVIEW DOES NOT CONSTITUTE APPROVAL OF ANY PRIVATE ON-SITE IMPROVEMENTS WHICH MAY BE SHOWN. CONSTRUCTION CANNOT COMMENCE UNTIL ALL REQUIRED DRAINAGE/TRAFFIC REPORT(S), FINAL DEVELOPMENT PLAN(S), SPECIAL REVIEW(S), GRADING PERMIT, AND/OR OTHER PERMITS ARE COMPLETE, APPROVED AND ON FILE WITH THE TOWN OF PARKER.



No Work Shall Occur in this Area

No Work Shall Occur in this Area

S00'16'55"V 2804.43' EAST LINE OF THE NE 1/4 OF SECTION 3, T.7S., R.69W., OF THE 6TH P.M.