

Front Elevation

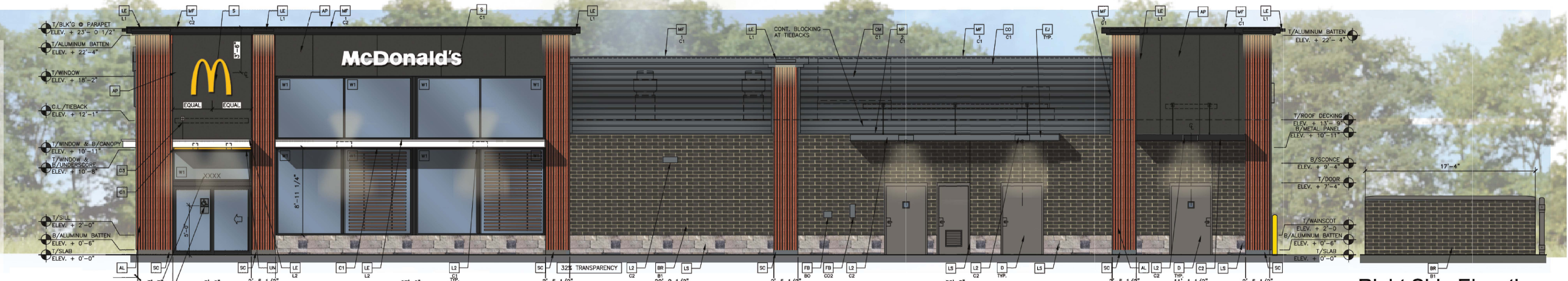
Front Elevation (Trash Enclosure)

Rear Elevation

Rear Elevation (Trash Enclosure)

Materials Legend

AL	Aluminum Battens Color: Wood Grain
AP	Alpolic Metal Panel RAL 7022 by Metal-Era
BR B1	Modular Face Brick "Onyx" Smooth by Summit Brick
C1	Aluminum Canopy (Prefinished Metal) "White"
C2	Aluminum Canopy (Prefinished Metal) "RAL 7022"
C3	Aluminum Canopy Tieback "RAL 7022"
CM C1	Metal Wall Panel System "Weathered Zinc" by Metal-Era
CO C1	Cornice "Weathered Zinc"
D	Hollow Metal Door "Gauntlet Gray" by Sherwin Williams
GR	Guard Rail "Iron Ore" by Sherwin Williams
LS	Heritage Thin Stone "Blitmore" by Telluride
MF C1	Metal Fascia "Weathered Zinc"
MF C2	Metal Fascia "RAL 7022"
PB	Pipe Bollard "Yellow"
PT	RMHC Coin Collector Model: #WPT STD
SC C1	Stucco "Gauntlet Gray" by Sherwin Williams
UN	Metal Underscore "Gold" by Metal-Era
W1	Exterior Window Assembly Tempered Glass
W2	Drive-Thru Window by Ready Access Model: 600 Series, 36" Service Height W/ Transom, Manual Open; Electronic Release
W3	Exterior Window Assembly Tempered Glass; Back Lit Glazing



Non-Drive-Thru Side Elevation

Right Side Elevation (Trash Enclosure)



Drive-Thru Side Elevation

Left Side Elevation (Trash Enclosure)

- KEY NOTES:**
- AL ALUMINUM BATTEN SYSTEM
SEE 2"X4" PROFILE
COLOR: WOOD GRAIN, BROWN, UNFINISHED, ENCOAT PAINTED TO MATCH SUBSTRATE. 1/2" EXPOSED HIGH DENSITY OVERLAY (HDO) FLOOR, BR GROUP 1, HDO BOTH SIDES, APA TRANSPARENT.
COLOR: BRN SHD SURFACES PRIOR TO FINISH. PRIME AND PAINT BOTH SIDES AND ALL EDGES.
SUBSTRATE COLOR: "IRON ORE" 7099 BY SHERWIN WILLIAMS
 - AP ALPOLIC METAL PANEL (COLOR: RAL 7022)
 - BR MODULAR FACE BRICK
B1-COLOR: "ONYX" SMOOTH BY SUMMIT BRICK
 - C1 ALUMINUM CANOPY SYSTEM W/FASCIA
COLOR: WHITE
 - C2 ALUMINUM CANOPY SYSTEM
COLOR: RAL 7022
 - C3 ALUMINUM CANOPY TIEBACK
COLOR: RAL 7022
GC TO PROVIDE CONTINUOUS BLOCKING ON WALL BEHIND TIEBACKS
 - CM METAL WALL PANEL SYSTEM BY METAL-ERA
C1-COLOR: WEATHERED ZINC
 - CO CORNICE
C1-COLOR: WEATHERED ZINC
 - D HOLLOW METAL DOOR
PAINT: "GAUNTLET GRAY" SW-7017 BY SHERWIN WILLIAMS
 - GR GUARD RAIL
B1 = BULK CO2 FILL BOX (EOPM SCHEDULE ITEM 48.00)
B2 = BULK OIL FILL BOX (EOPM SCHEDULE ITEM 700.18)
 - LS HERITAGE THIN STONE BY TELLURIDE
COLOR: "BLITMORE" (TO BE VERIFIED WITH McDONALDS ACM)
 - MF METAL FASCIA
C1 = PRE-FAB ANCHOR-TIE FASCIA
BOTTOM TRIM AT METAL REVEAL PANEL
C2 = WEATHERED ZINC RACEWAY
C3 = VERTICAL TRIM AT METAL REVEAL PANEL CORNERS, CLOSURES
C4-COLOR: WEATHERED ZINC
C5 = RAL 7022
 - PT RMHC COIN COLLECTOR
MODEL: #WPT STD CALL 1-888-743-7435 TO ORDER
 - SC STUCCO
C1-PAINT TO MATCH HARDIE PLANK SIDING OR GAUNTLET GRAY SW719 BY SHERWIN WILLIAMS
 - UN METAL UNDERSCORE
COLOR: GOLD
 - W1 EXTERIOR WINDOW ASSEMBLY - TEMPERED GLASS
COLOR: DARK BRONZE
 - W2 DRIVE-THRU WINDOW BY READY ACCESS
MODEL: 600 SERIES, 36" SERVICE HEIGHT WITH TRANSMOM, MANUAL OPEN, ELECTRONIC RELEASE
COLOR: DEEP BRONZE
SLIDE DIRECTION: RL = RIGHT TO LEFT
LR = LEFT TO RIGHT
 - W3 EXTERIOR WINDOW ASSEMBLY - TEMPERED GLASS
COLOR: DARK BRONZE
BACK LIT GLAZING



Arris Architecture, LLC
3436 New Castle Dr.
Loveland, CO 80538

PROPOSED McDONALD'S #005-1004
6940 STROH ROAD
PARKER, CO 80134