

1 VENT PIPING PLAN
 P1.2 SCALE: 1/4" = 1'-0"

DRAWING NOTES

1. PIPING ROUTES ARE GENERAL AND MAY VARY DUE TO FIELD CONDITIONS. COORDINATE ALL PIPE ROUTES WITH OTHER TRADES.
2. WALL CLEAN-OUTS FOR WASTE PIPING NOT SHOWN FOR CLARITY. SEE GENERAL NOTES FOR REQUIREMENTS.
3. ONLY MAIN FLOOR CLEAN-OUTS ARE SHOWN FOR CLARITY. SEE GENERAL NOTES FOR REQUIREMENTS.
4. ALL HORIZONTAL STORM DRAINAGE PIPING SHALL BE INSULATED TO PREVENT CONDENSATION. INSULATION NOT SHOWN FOR CLARITY. SEE PLUMBING NOTES FOR INSULATION REQUIREMENTS.

KEYED NOTES

- P1 NOT USED
- P2 NOT USED
- P3 NOT USED
- P4 PROVIDE PROSET TRAP GUARD® FOR FLOOR DRAIN.
- P5 TOP OF CONCRETE SLAB IS 0'-6" A.F.F.
- P6 VENT FROM GREASE INTERCEPTOR. SEE SITE PLAN FOR CONTINUATION. COORDINATE PIPE ROUTING WITH LOCATION OF GREASE INTERCEPTOR.
- P7 4" VENT UP THROUGH ROOF WITH A 4"x5" VENT CAP
- P8 REFERENCE MANUFACTURER INSTALLATION GUIDE FOR LAYOUT AND SLOPING GUIDELINES PRIOR TO INSTALL AND POURING THE SLAB.
- P9 UTILITIES SHALL NOT BE ROUTED ABOVE THE TECH. CLOSET AND THE SWITCHGEAR.
- P10 CONDENSATE LINE FROM RTU's DOWN TO DRAIN AT MOP SINK INDIRECT WITH AIR GAP 2 x DIAMETER, TERMINATE PIPE ABOVE FLOOD RIM. FURNISHED AND INSTALLED BY PC. SEE COORDINATION SCHEDULE ON P4.1 & M4.1.

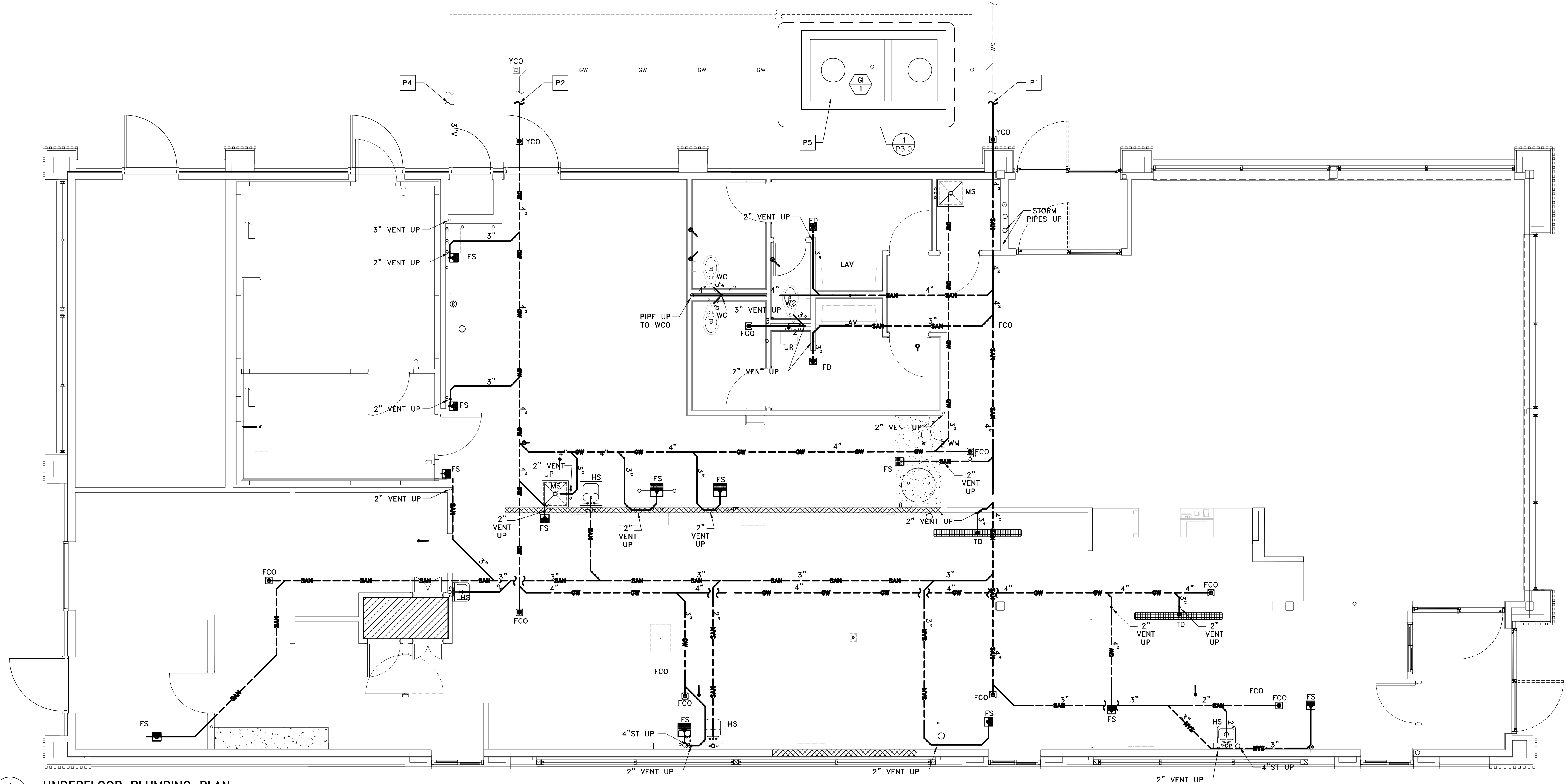
PREPARED BY:
ARRIS ARCHITECTURE
 Arris Architecture, LLC
 3436 New Castle Dr.
 Loveland, CO 80538
 970.988.6302
 coreys@arrisinc.net

PREPARED FOR:
McDonald's USA, LLC
 These drawings and specifications are the confidential and proprietary property of McDonald's USA, LLC and shall not be copied or reproduced without written authorization. The contract documents shall govern over any drawings or specifications. Use of these drawings for reference or example on another project requires the services of properly licensed architects and engineers. Reproduction of the contract documents for reuse on another project is not authorized.

TITLE	2022 STANDARD BUILDING - BB20
SHEET NO.	4597 - WOOD/WOOD
DESCRIPTION	WOOD BEARING WALLS W/ BRICK EXTERIOR FINISH & CI WOOD TRUSS ROOF FRAMING
SITE ID	ELF S/BATTENMETAL PANEL/BRICK EXTERIOR FINISH
SITE ADDRESS	13151 S. PARKER ROAD PARKER, CO 80134
ARRIS PROJECT #	0876-22

P1.2
 VENT PIPING PLAN

REV	DATE	DESCRIPTION	BY



1 UNDERFLOOR PLUMBING PLAN
 P1.3 SCALE: 1/4" = 1'-0"

DRAWING NOTES

1. PIPING ROUTES ARE GENERAL AND MAY VARY DUE TO FIELD CONDITIONS. COORDINATE ALL PIPE ROUTES WITH OTHER TRADES.
2. WALL CLEAN-OUTS FOR WASTE PIPING NOT SHOWN FOR CLARITY. SEE GENERAL NOTES FOR REQUIREMENTS.
3. ONLY MAIN FLOOR CLEAN-OUTS ARE SHOWN FOR CLARITY. SEE GENERAL NOTES FOR REQUIREMENTS.

KEYED NOTES

- P1 SANITARY LINE TO SANITARY SEWER. SEE SITE PLAN FOR CONTINUATION.
- P2 GREASE LINE TO EXTERIOR GREASE INTERCEPTOR. SEE SITE PLAN FOR CONTINUATION
- P3 STORM LINE TO STORM SYSTEM. SEE SITE PLAN FOR CONTINUATION.
- P4 VENT FROM GREASE INTERCEPTOR. SEE SITE PLAN FOR CONTINUATION. COORDINATE PIPE ROUTING WITH LOCATION OF GREASE INTERCEPTOR.
- P5 GREASE INTERCEPTOR LOCATION SHOWN FOR REFERENCE ONLY. COORDINATE GREASE INTERCEPTOR LOCATION WITH CIVIL ENGINEER AND SITE CONTRACTOR.
- P6 INSTALL SAMPLING PORT (IF REQUIRED) SCHIER, MODEL SV10 FOR SCHIER HYDROMECHANICAL GREASE INTERCEPTOR.

WASTE PIPE SIZING - IPC

FIXTURE TYPE	TRAP SIZE	DFU	QUANTITY	TOTAL
URINAL	2 IN.	4	1	4
WATER CLOSET	3 IN.	4	3	12
LAVATORY	1 1/4 IN.	1	2	2
WASH SINK (HAND SINK)	1 1/2 IN.	2	4	8
FLOOR DRAIN OR SINK	3 IN.	5	5	25
FLOOR DRAIN OR SINK	4 IN.	6	1	6
EMERGENCY FLOOR DRAIN (BATHROOMS)	3 IN.	0	2	0
			TOTAL	57

GREASE PIPE SIZING - IPC

SERVICE SINK (MOP SINK)	3 IN.	3	2	6
FLOOR DRAIN OR SINK	3 IN.	5	7	35
FLOOR DRAIN OR SINK	4 IN.	6	1	6
WASHING MACHINE	2 IN.	3	1	3
			TOTAL	50

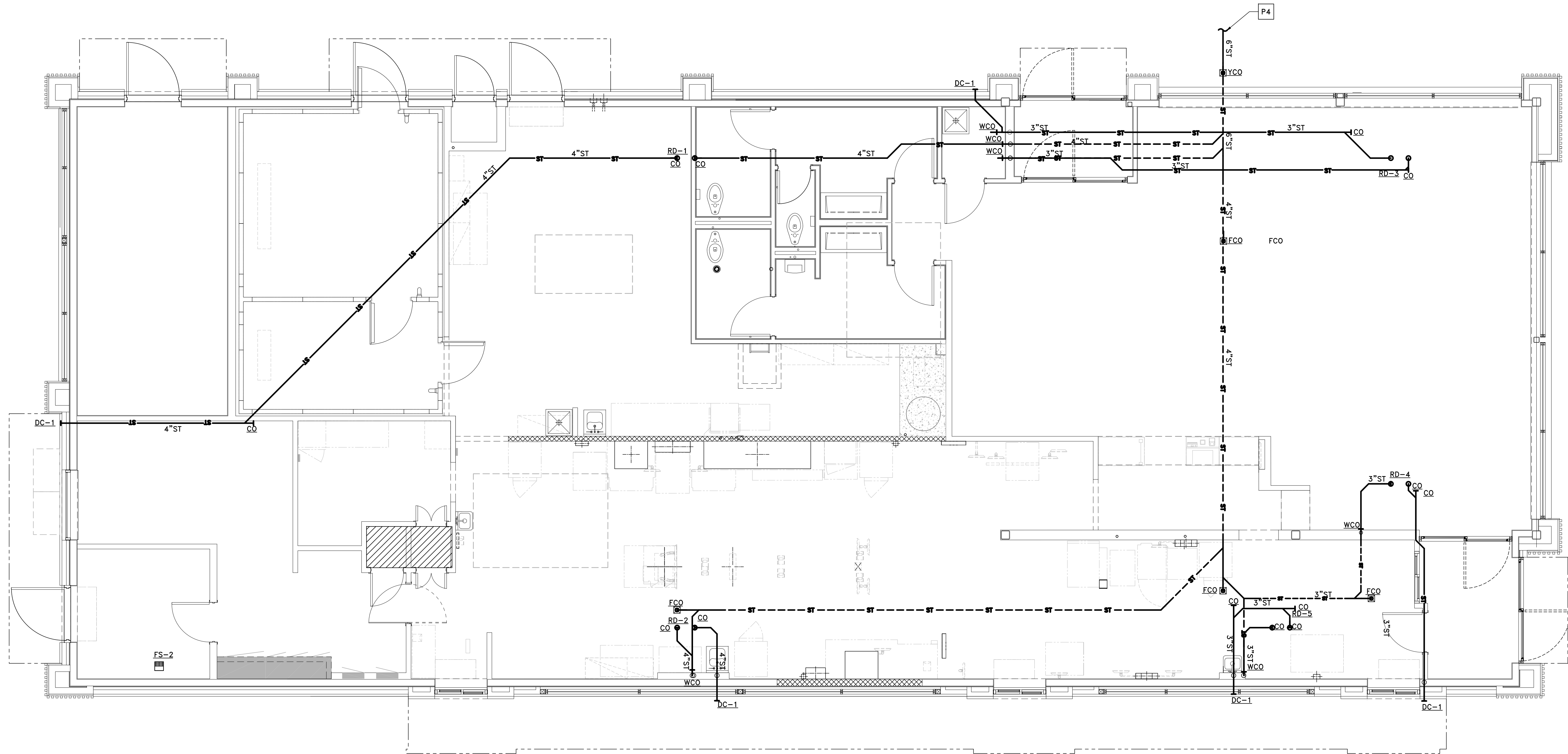
PREPARED BY:
ARRIS ARCHITECTURE
 Arris Architecture, LLC
 3436 New Castle Dr.
 Loveland, CO 80538
 970.988.6302
 coreys@arrisinc.net

PREPARED FOR:
McDonald's USA, LLC
 © 2022 McDonald's USA, LLC
 These drawings and specifications are the confidential and proprietary property of McDonald's USA, LLC and shall not be copied or reproduced without written authorization. The contract documents shall govern over any drawings or specifications. Use of these drawings for reference or example on another project requires the services of properly licensed architects and engineers. Reproduction of the contract documents for reuse on another project is not authorized.

TITLE: 2022 STANDARD BUILDING - BB20
 SHEET NO. 4597 - WOOD/WOOD
 DESCRIPTION: WOOD BEARING WALLS W/ BRICK EXTERIOR FINISH & CI WOOD TRUSS ROOF FRAMING
 E.L.F. S./BATTEN/METAL PANEL/BRICK EXTERIOR FINISH
 SITE ID: 005-1032
 SITE ADDRESS: 13151 S. PARKER ROAD PARKER, CO 80134
 ARRIS PROJECT # 0876-22

P1.3
 UNDERGROUND PLUMBING

REV	DATE	DESCRIPTION	BY



1 STORM PIPING PLAN
 P1.2 SCALE: 1/4" = 1'-0"

DRAWING NOTES

1. PIPING ROUTES ARE GENERAL AND MAY VARY DUE TO FIELD CONDITIONS. COORDINATE ALL PIPE ROUTES WITH OTHER TRADES.
2. WALL CLEAN-OUTS FOR WASTE PIPING NOT SHOWN FOR CLARITY. SEE GENERAL NOTES FOR REQUIREMENTS.
3. ONLY MAIN FLOOR CLEAN-OUTS ARE SHOWN FOR CLARITY. SEE GENERAL NOTES FOR REQUIREMENTS.
4. ALL HORIZONTAL STORM DRAINAGE PIPING SHALL BE INSULATED TO PREVENT CONDENSATION. INSULATION NOT SHOWN FOR CLARITY. SEE PLUMBING NOTES FOR INSULATION REQUIREMENTS.

KEYED NOTES

- P1 TERMINATE OVERFLOW DRAIN AS HIGH AS POSSIBLE WITH DOWNSPOUT COVER.
- P2 TERMINATE OVERFLOW DRAIN ABOVE TRELIS WITH DOWNSPOUT COVER. BOTTOM OF DOWNSPOUT OUTLET PIPE SHALL BE AT LEAST 3" BUT NOT MORE THAN 8" ABOVE TOP OF TRELIS.
- P3 TERMINATE BOTTOM OF OVERFLOW DRAIN A MINIMUM OF 12" ABOVE GRADE WITH DOWNSPOUT COVER.
- P4 STORM LINE TO STORM SYSTEM. SEE SITE PLAN FOR CONTINUATION.

STORM PIPE SIZING

RAINFALL = 4 IN./HR		
VERTICAL LEADERS		
	ROOF AREA	SIZE
ROOF DRAIN	SQ. FT.	IN.
RD-1	1,492	4
RD-2	1,494	4
RD-3	1,042	4
RD-4	1,041	4
TOTAL	5,069	
HORIZONTAL PIPING (SLOPE 1/8" PER FOOT)		
	ROOF AREA	SIZE
ROOF DRAIN	SQ. FT.	IN.
RD-2 & RD-4	2,535	6
RD-2, RD-3 & RD-4	3,577	6
RD-1, RD-2, RD-3 & RD-4	5,069	6

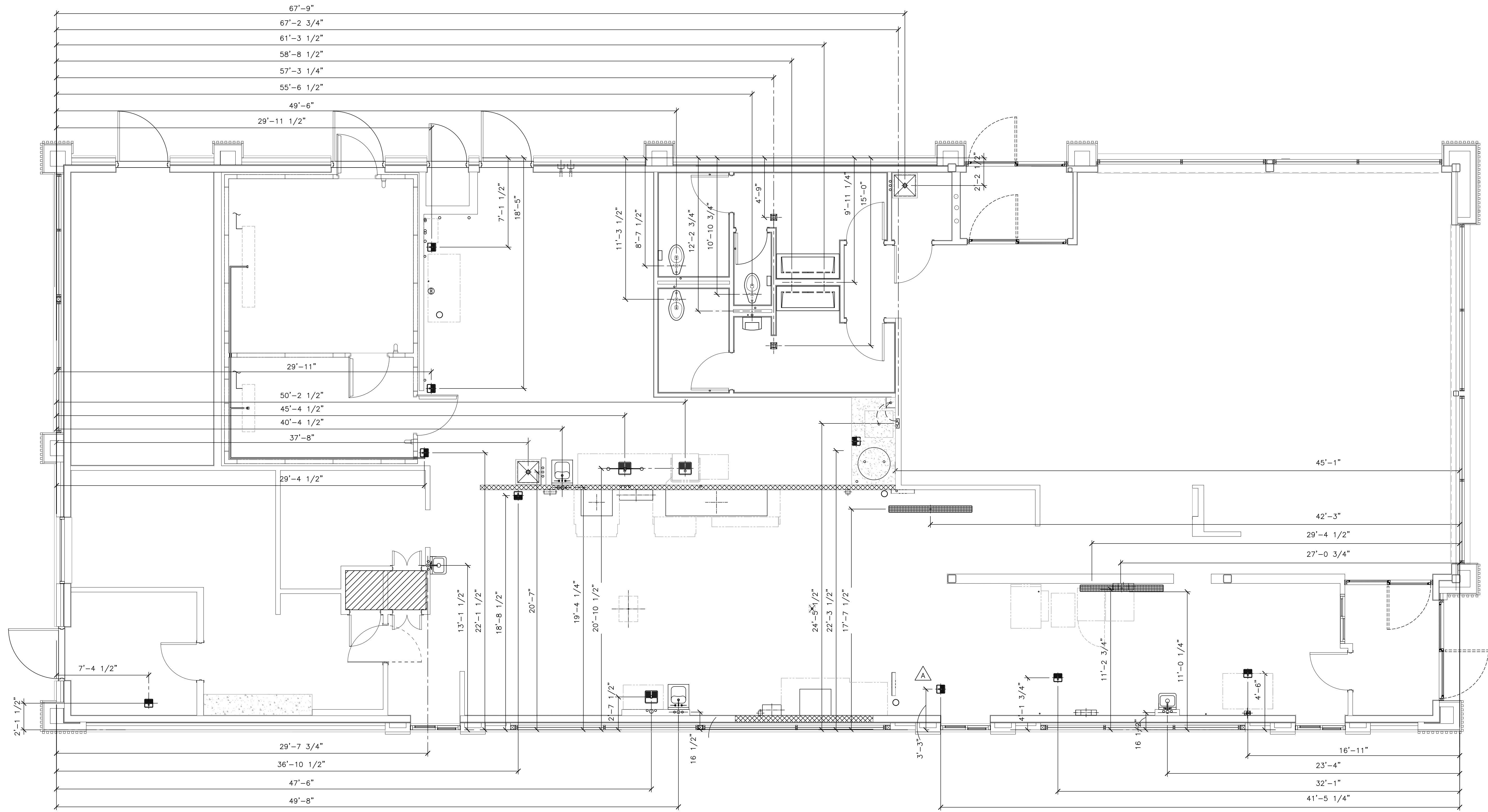
PREPARED BY:
ARRIS ARCHITECTURE
 Arris Architecture, LLC
 3436 New Castle Dr.
 Loveland, CO 80538
 970.988.6302
 coreys@arrisinc.net

© 2022 McDonald's USA, LLC
McDonald's USA, LLC
 These drawings and specifications are the confidential and proprietary property of McDonald's USA, LLC and shall not be copied or reproduced without written authorization. The contract documents shall govern in the event of any conflict. Use of these drawings for reference or example on another project requires the services of properly licensed architects and engineers. Reproduction of the contract documents for use on another project is not permitted.

TITLE	2022 STANDARD BUILDING - BB20
SHEET NO.	4597 - WOOD/WOOD
DESCRIPTION	WOOD BEARING WALLS W/ BRICK EXTERIOR FINISH & CI WOOD TRUSS ROOF FRAMING
SITE ADDRESS	ELF S/BATTENMETAL PANEL/BRICK EXTERIOR FINISH
SITE ID	005-1032
ARRIS PROJECT #	0876-22
13151 S. PARKER ROAD PARKER, CO 80134	

DATE	08/16/22
REV	
DATE	
DESCRIPTION	
BY	

P1.4
 STORM PIPING PLAN



1 UNDERGROUND ROUGH-IN
 SCALE: 1/4" = 1'-0"

DRAWING NOTES

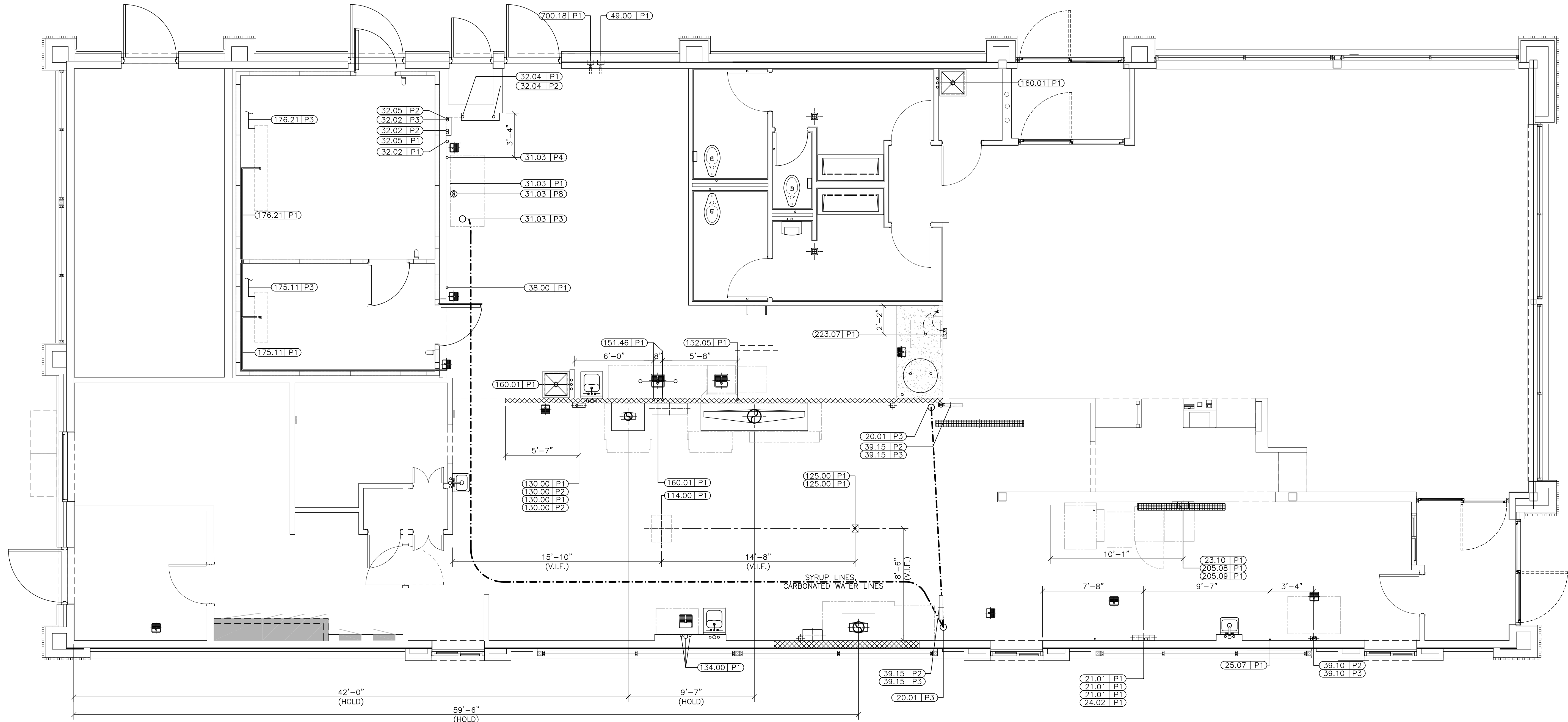
1. THIS PLAN IS PROVIDED AS A GUIDE FOR THE PLUMBING CONTRACTOR. ALL DIMENSIONS ARE ROUNDED TO THE NEAREST 1/4" AND ARE TAKEN FROM THE OUTSIDE EDGE OF THE FOUNDATION WALL TO CENTERLINE OF SLAB PENETRATION.

REV	DATE	DESCRIPTION	BY

PREPARED BY:
ARRIS ARCHITECTURE
 Aris Architecture, LLC
 3436 New Castle Dr.
 Loveland, CO 80538
 970.988.6302
 coreys@arrisinc.net

PREPARED FOR:
McDonald's USA, LLC
 These drawings and specifications are the confidential and proprietary property of McDonald's USA, LLC and shall not be copied or reproduced without written authorization. The contract documents shall govern over any drawings or specifications. Use of these drawings for reference or example on another project requires the services of properly licensed architects and engineers. Reproduction of the contract documents for use on another project is not authorized.

TITLE	2022 STANDARD BUILDING - BB20
DESCRIPTION	4597 - WOOD/WOOD
WOOD BEARING WALLS W/ BRICK EXTERIOR FINISH & CI	
WOOD TRUSS ROOF FRAMING	
ELF S/BATTEN/METAL PANEL/BRICK EXTERIOR FINISH	
SITE ID	005-1032
SITE ADDRESS	13151 S PARKER ROAD PARKER, CO 80134
ARRIS PROJECT #	0876-22



1 OVERHEAD ROUGH-IN
 P1.6 SCALE: 1/4" = 1'-0"

PLUMBING SCHEDULE

TAG #	QTY	DESCRIPTION	GAS TYPE	GAS BTU	GAS SIZE	HW	CW	MISC PLBG	HGT AFF	DRAIN	REQUIREMENTS & REMARKS
020.01P3	2	AUTOMATED BEVERAGE SYSTEM 2.0	-	-	-	-	-	SODA BUNDLE	SEE RMKS	-	DN CHASE FROM SODA SYSTEM - "T" FROM D/T - BSI TO MAKE FINAL CONNECTIONS PER LOCAL CODES
021.01P1	3	COFFEE BREWER (GLASS DECATERS)	-	-	-	-	1/4" TRTD	-	SEE RMKS	-	DN CHASE FROM SODA SYSTEM - IF NO CHASE RUN IN 2"COND TO JB -BSI TO CONN CW LINE PER LOCAL CODES. 1/4" R.O. WATER OPTIONAL
023.10P1	1	ESPRESSO BREWER	-	-	-	-	3/8" R.O.	-	SEE RMKS	3/8" IND	DN CHASE FROM R.O. SYSTEM - IF NO CHASE RUN IN 2"COND TO JB -BSI TO CONN CW LINE PER LOCAL CODES
024.02P1	1	JUICE DISPENSER	-	-	-	-	1/2" FLTR	-	SEE RMKS	-	-
025.07P1	1	INFUSION TEA BREWER - MIS	-	-	-	-	1/2" TRTD	3/8" CO2	SEE RMKS	-	DN CHASE FROM SODA SYSTEM - IF NO CHASE RUN IN 2"COND TO JB -BSI TO CONN CW LINE PER LOCAL CODES
031.03P1	1	SODA SYSTEM PACKAGE B.I.B.(RECIRCULATING- 3 TOWERS)	-	-	-	-	-	3/8" OUTLET	SEE RMKS	-	FLEX LINE OVERHEAD TO VARIOUS EQUIP. BSI TO MAKE FINAL CONN PER LOCAL CODES
031.03P3	1	SODA SYSTEM PACKAGE B.I.B.(RECIRCULATING- 3 TOWERS)	-	-	-	-	-	SODA BUNDLE	SEE RMKS	-	OVERHEAD TO SODA TOWER CHASE(S) - BSI TO MAKE FINAL CONNECTIONS PER LOCAL CODES
031.03P4	1	SODA SYSTEM PACKAGE B.I.B.(RECIRCULATING- 3 TOWERS)	-	-	-	-	3/4"	-	SEE RMKS	3/4" IND	BSI TO MAKE CONNECTION FROM BACKFLOW PREVENTER (VERIFY HEIGHT IN FIELD)
031.03P8	1	SODA SYSTEM PACKAGE B.I.B.(RECIRCULATING- 3 TOWERS)	-	-	-	-	-	REFRIG LINES	SEE RMKS	-	FROM REMOTE CONDENSING UNIT
032.02P1	1	REVERSE OSMOSIS WATER FILTRATION SYSTEM - TANKLESS	-	-	-	-	3/8" FLTR	-	SEE RMKS	-	FLEX LINE OVERHEAD FROM SODA SYSTEM -BSI TO MAKE FINAL CONN PER LOCAL CODES
032.02P2	1	REVERSE OSMOSIS WATER FILTRATION SYSTEM - TANKLESS	-	-	-	-	-	3/8" OUTLET	SEE RMKS	-	FLEX LINE OVERHEAD TO RAPID STEAMER, ESPRESSO, AND COFFEE (OPT.) -BSI TO MAKE FINAL CONN PER LOCAL CODES
032.02P3	1	REVERSE OSMOSIS WATER FILTRATION SYSTEM - TANKLESS	-	-	-	-	-	-	SEE RMKS	1/4" WASTE	-
032.04P1	1	WATER FILTRATION SYSTEM	-	-	-	-	-	3/4" INLET	SEE RMKS	6'-0"	-
032.04P2	1	WATER FILTRATION SYSTEM	-	-	-	-	-	3/4" OUTLET	SEE RMKS	-	3/4" GHT RINSE CONN. FLEX LINE OVHD. TO RAPID STEAMER, ESPRESSO, & COFFEE (OPT.) -BSI TO MAKE FINAL CONN PER LOCAL CODE
032.05P1	1	WATER FILTRATION SYSTEM	-	-	-	-	-	3/4" INLET	SEE RMKS	-	FLEX LINE OVERHEAD FROM R.O. SYSTEM -BSI TO MAKE FINAL CONN PER LOCAL CODES
032.05P2	1	WATER FILTRATION SYSTEM	-	-	-	-	-	3/4" OUTLET	SEE RMKS	-	FLEX LINE OVERHEAD TO COMBI OVENS AND STAGING CABINET -BSI TO MAKE FINAL CONN PER LOCAL CODES
038.00P1	1	CLEAN IN PLACE PANEL	-	-	-	-	1/2" FLTR	-	SEE RMKS	6'-0"	FOR CLEANING BULK COKE TANKS. INSTALL HEIGHT TO BOTTOM OF UNIT
039.10P2	1	ICE MACHINE - 1400 LB.	-	-	-	-	1/2" TRTD	-	SEE RMKS	3/4" IND	WATER LINE OVERHEAD FROM SODA SYSTEM - BSI TO MAKE FINAL CONNECTIONS PER LOCAL CODES
039.10P3	1	ICE MACHINE - 1400 LB.	-	-	-	-	-	REFRIG LINES	SEE RMKS	-	REFRIGERATION LINES OVERHEAD FROM REMOTE CONDENSING UNIT

PLUMBING SCHEDULE

TAG #	QTY	DESCRIPTION	GAS TYPE	GAS BTU	GAS SIZE	HW	CW	MISC PLBG	HGT AFF	DRAIN	REQUIREMENTS & REMARKS
039.15P2	2	ICE MACHINE - 1000 LB.	-	-	-	-	1/2" TRTD	-	SEE RMKS	3/4" IND	WATER LINE OVERHEAD FROM SODA SYSTEM - BSI TO MAKE FINAL CONNECTIONS PER LOCAL CODES
039.15P3	2	ICE MACHINE - 1000 LB.	-	-	-	-	-	REFRIG LINES	SEE RMKS	-	REFRIGERATION LINES OVERHEAD FROM REMOTE CONDENSING UNIT
049.00P1	1	CO2 FILL BOX	-	-	-	-	-	-	SEE RMKS	3'-4"	HEIGHT IS TO BOTTOM OF FILL BOX,SUPPLIED BY MANUFACTURER,INSTALLED BY G.C. SEE BUILDING ELEVATIONS.
114.00P1	1	HUMIDIFIED HOLDING CABINET	-	-	-	-	3/8" R.O.	-	SEE RMKS	-	BSI EXTENDS CW LINE OVERHEAD FROM R.O. SYSTEM & TERM. W/QUICK DISCONN. AND SHUTOFF
125.00P1	2	RAPID BUN STEAMER	-	-	-	-	3/8" R.O.	-	SEE RMKS	-	BSI EXTENDS CW LINE FROM R.O. SYSTEM & TERM. W/QUICK DISCONN.
130.00P1	2	COMBI OVEN	-	-	-	-	1/2" FLTR	-	SEE RMKS	1 1/2" IND	BSI EXTENDS CW LINE OVERHEAD FROM SODA SYSTEM & TERM. W/QUICK DISCONN. AND SHUTOFF
130.00P2	2	COMBI OVEN	-	-	-	-	3/8" R.O.	-	SEE RMKS	-	BSI EXTENDS CW LINE OVERHEAD FROM R.O. SYSTEM & TERM. W/QUICK DISCONN. AND SHUTOFF
134.00P1	1	VEGETABLE SINK	-	-	-	-	3/4"	-	SEE RMKS	1'-10"	1'-1/2" IND
151.46P1	1	SOILED DISHTABLE - RIGHT HAND - 90.5" WIDE	-	-	-	-	3/4"	-	SEE RMKS	1'-6"	PC MAKES FINAL CONNECTIONS PER LOCAL CODE
152.05P1	1	WAREWASHER (WITH VAPOR VENT) - UPRIGHT	-	-	-	-	1/2" 140	1/2"	SEE RMKS	2" INDIRECT	PC TO PROVIDE HW, CW, INDIRECT DRAIN PIPING AND MAKE ALL FINAL CONNECTIONS. HW @ 5'-2" AFF, CW @ 4'-10" AFF, DRAIN @ 9"
160.01P1	3	CHEMICAL SYSTEM	-	-	-	-	3/4" 110	-	SEE RMKS	-	PC TO PROVIDE 3/4" MHT. FINAL CONNECTIONS BY EQUIPMENT INSTALLER PER LOCAL CODE, SEE SHEET P3.0 FOR INSTALLATION HEIGHT
175.11P1	1	COOLER EVAPORATOR	-	-	-	-	-	-	SEE RMKS	3/4" COND.	PC TO ROUTE CONDENSATE DRAIN LINE TO FLOOR DRAIN. PC TO LIQUID-TIGHT SEAL OPENING FOR LINE EXITING BOX
175.11P3	1	COOLER EVAPORATOR	-	-	-	-	-	REFRIG LINES	SEE RMKS	-	RUN TO REMOTE CONDENSING UNIT-INSULATE FULL RUN LENGTH-INSTALLED BY REFRIG. CONTRACTOR
176.21P1	1	FREEZER EVAPORATOR	-	-	-	-	-	-	SEE RMKS	3/4" COND.	PC TO ROUTE CONDENSATE DRAIN LINE TO FLOOR DRAIN. PC TO LIQUID-TIGHT SEAL OPENING FOR LINE EXITING BOX. HEAT TAPE BY REF.
176.21P3	1	FREEZER EVAPORATOR	-	-	-	-	-	REFRIG LINES	SEE RMKS	-	RUN TO REMOTE CONDENSING UNIT-INSULATE FULL RUN LENGTH-INSTALLED BY REFRIG. CONTRACTOR
205.08P1	1	BIC MACHINE	-	-	-	-	1/2" FLTR	-	SEE RMKS	1" IND	DN CHASE IF NO CHASE RUN IN 2"COND TO JB -BSI TO CONNECT LINES PER LOCAL CODES
205.09P1	1	FROZEN BEVERAGE DISPENSER	-	-	-	-	1/2" FLTR	3/8" CO2	SEE RMKS	-	DN CHASE IF NO CHASE RUN IN 2"COND TO JB -BSI TO CONNECT LINES PER LOCAL CODES
223.07P1	1	WASHER	-	-	-	-	3/4" 140	3/4"	SEE RMKS	1 1/2" D	SEE PLUMBING DWGS FOR WALL BOX. INSTALL HEIGHT IS TO BOTTOM OF THE BOX
700.18P1	1	BULK OIL FILL BOX	-	-	-	-	-	-	SEE RMKS	3'-4"	HEIGHT IS TO BOTTOM OF FILL BOX,SUPPLIED BY MANUFACTURER,INSTALLED BY G.C. SEE BUILDING ELEVATIONS.

PREPARED BY:
ARRIS ARCHITECTURE
 Arris Architecture, LLC
 3436 New Castle Dr.
 Loveland, CO 80538
 970.988.6302
 coreys@arrisinc.net

© 2022 McDonald's USA, LLC
McDonald's USA, LLC
 These drawings and specifications are the confidential and proprietary property of McDonald's USA, LLC and shall not be copied or reproduced without written authorization. The contract documents shall govern in the event of any conflict. Use of these drawings for reference or example on another project requires the services of properly licensed architects and engineers. Reproduction of the contract documents for use on another project is not authorized.

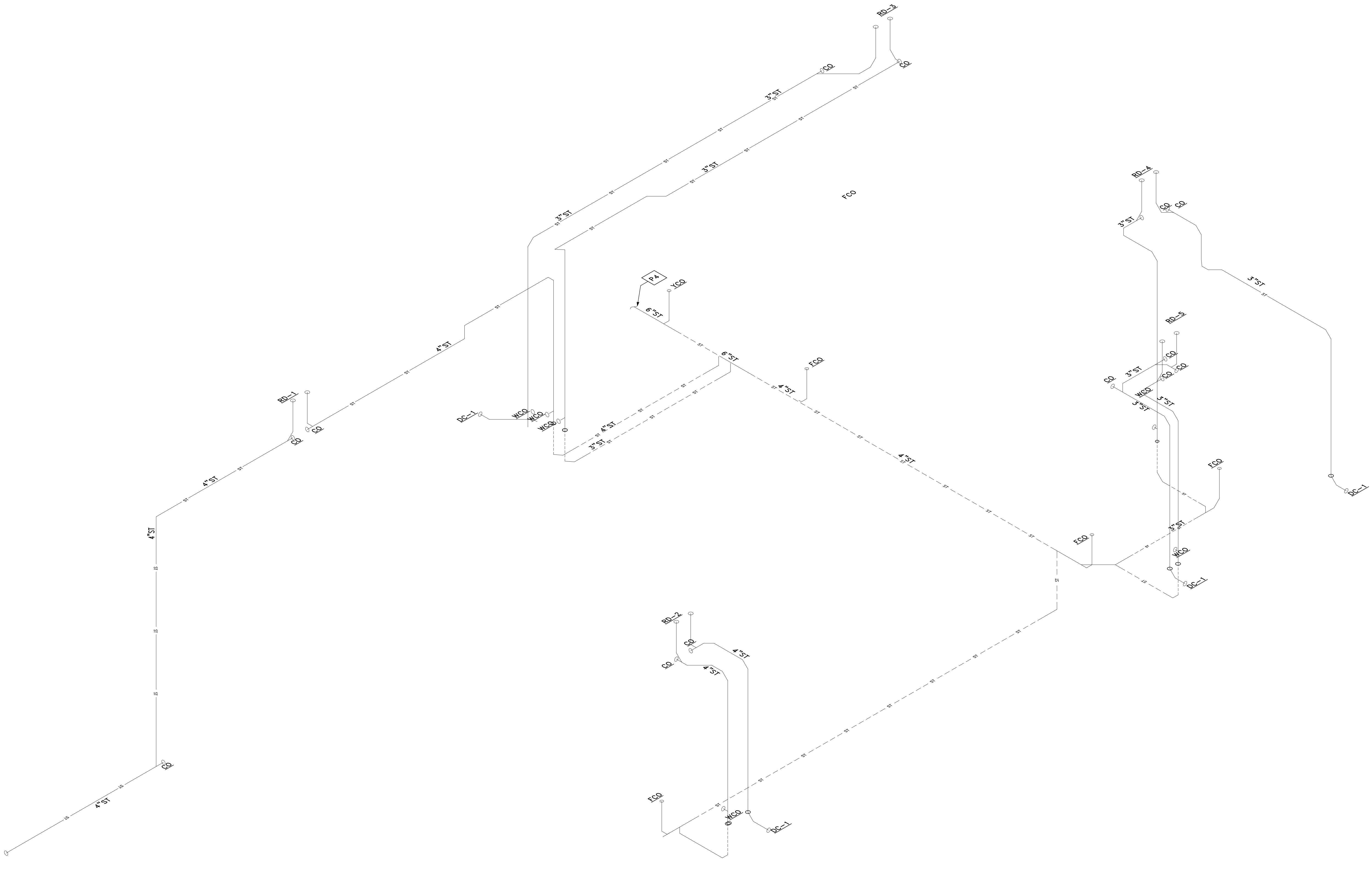
TITLE: 2022 STANDARD BUILDING - BB20
 DESCRIPTION: 4597' - WOOD/WOOD
 WOOD BEARING WALLS W/ BRICK EXTERIOR FINISH 4 CI
 WOOD TRUSS ROOF FRAMING
 ELF, SUBMETAL PANEL/BRICK EXTERIOR FINISH

DATE ISSUED: 08/16/22
 SITE ID: 0005-1032
 SITE ADDRESS: 13151 S. PARKER ROAD PARKER, CO 80134

REVISIONS:

REV	DATE	DESCRIPTION

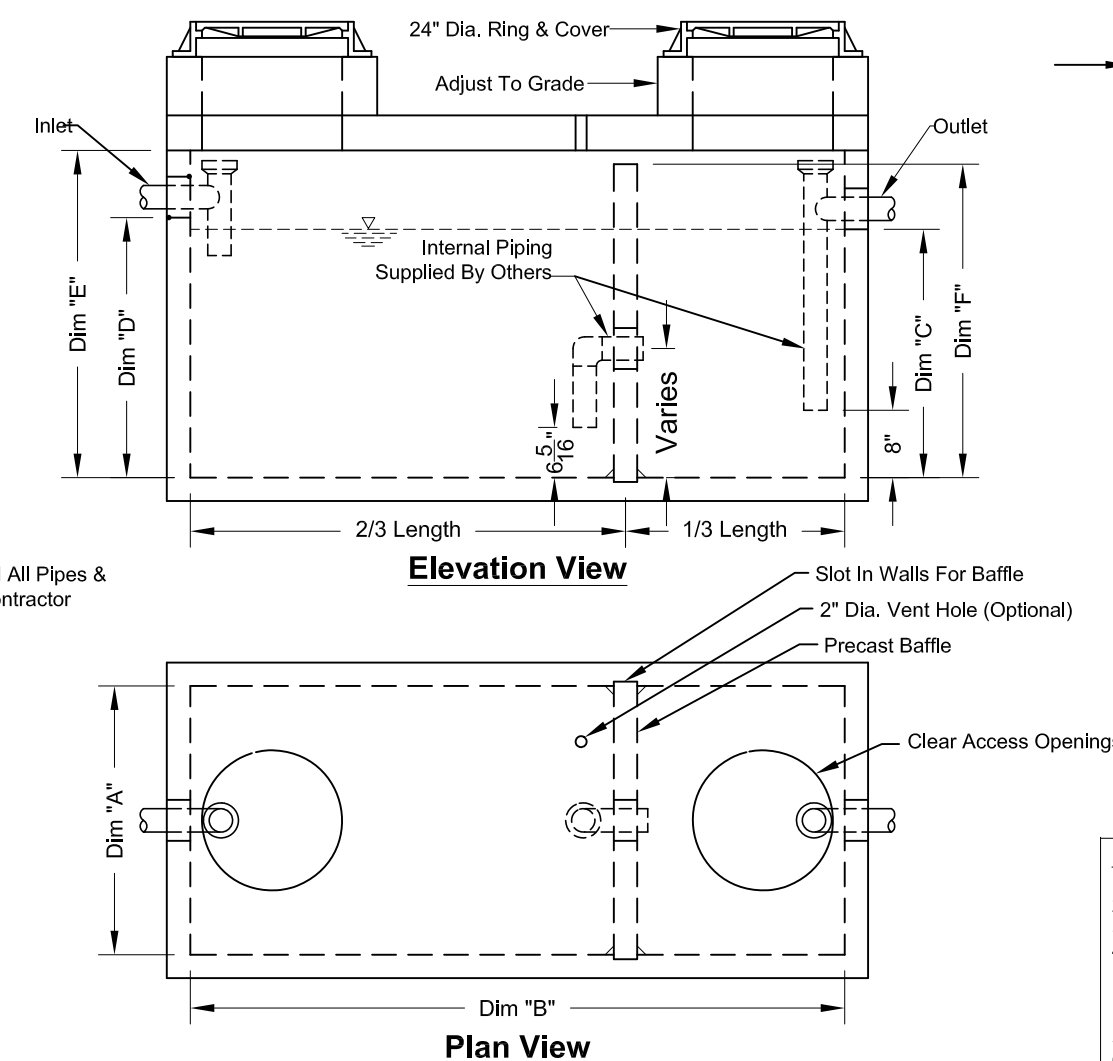
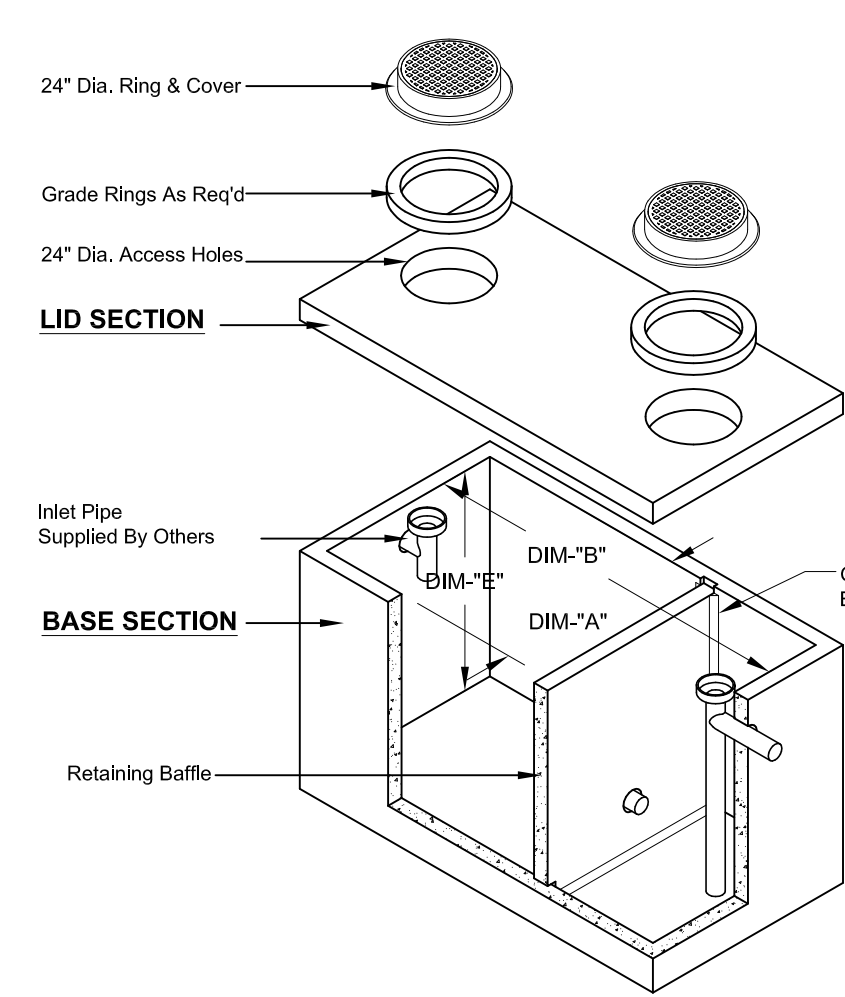
BY: _____



TITLE	2022 STANDARD BUILDING - BB20	PREPARED BY:	ARRIS ARCHITECTURE
SHEET NO.	4597 - WOOD/WOOD	REV	DATE
DESCRIPTION	WOOD BEARING WALLS W/ BRICK EXTERIOR FINISH & CI	REV	DATE
WOOD TRUSS ROOF FRAMING	WOOD TRUSS ROOF FRAMING	REV	DATE
ELF S/BATTEN/METAL PANEL/BRICK EXTERIOR FINISH	ELF S/BATTEN/METAL PANEL/BRICK EXTERIOR FINISH	REV	DATE
SITE ID	005-1032	REV	DATE
SITE ADDRESS	13151 S. PARKER ROAD PARKER, CO 80134	REV	DATE
ARRIS PROJECT #	0876-22	REV	DATE
DRAWN BY		BY	
STD ISSUE DATE		DESCRIPTION	
REVIEWED BY			
DATE ISSUED			

© 2022 McDonald's USA, LLC
McDonald's USA, LLC
 These drawings and specifications are the confidential and proprietary property of McDonald's USA, LLC and shall not be copied or reproduced without written authorization. The contract documents shall govern in the event of any conflict. Use of these drawings for reference or example on another project requires the services of properly licensed architects and engineers. Reproduction of the contract documents for reuse on another project is not authorized.

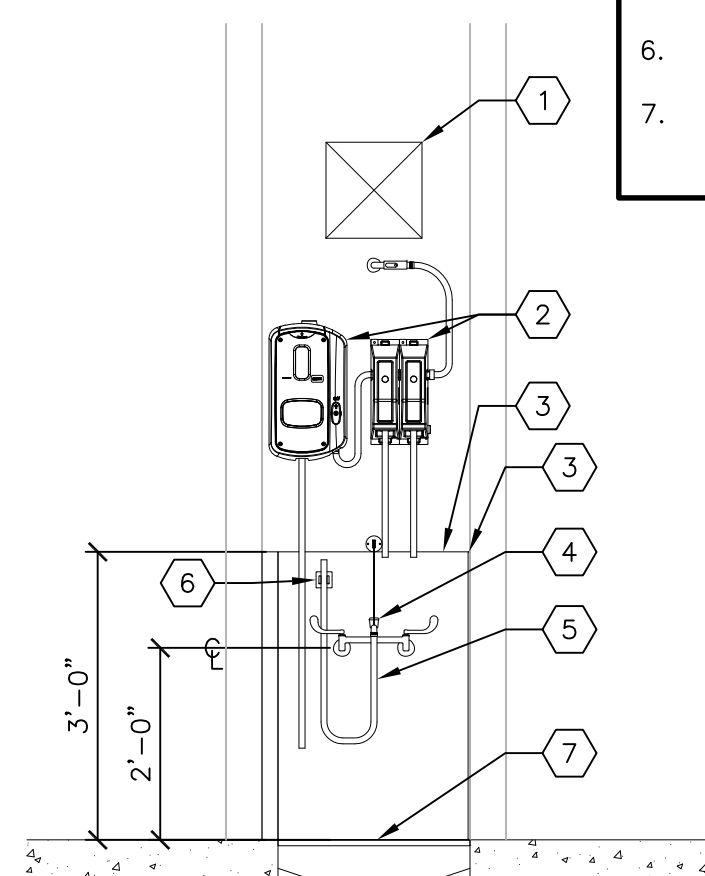
PREPARED BY:
ARRIS ARCHITECTURE
 Arris Architecture, LLC
 3436 New Castle Dr.
 Loveland, CO 80538
 970.988.6302
 coreys@arrisinc.net



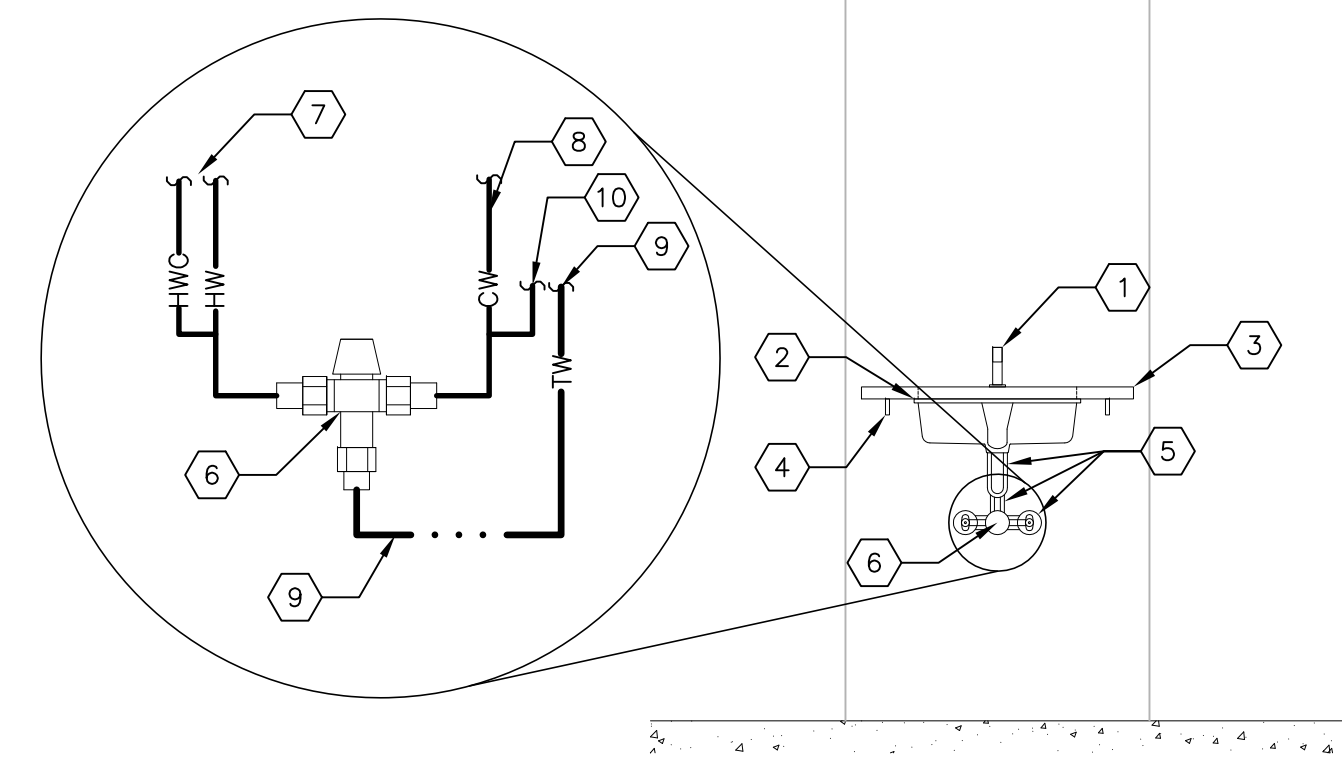
GALLON CAPACITY	MODEL No.	DIM "A"	DIM "B"	WATER DEPTH DIM "C"	DIM "D"	DIM "E"	DIM "F"	WEIGHT
320	463-GI	4'-0"	6'-0"	2'-0"	2'-2"	3'-0"	2'-10"	7,535
500	4113-GI	4'-0"	11'-0"	2'-0"	2'-2"	3'-0"	2'-10"	11,631
750	4114-GI	4'-0"	11'-0"	2'-6"	2'-8"	4'-0"	3'-10"	14,031
1000	4115-GI	4'-0"	11'-0"	3'-0"	3'-2"	4'-0"	4'-4"	15,309
1500	4116-GI	4'-0"	11'-0"	4'-0"	4'-2"	5'-0"	4'-10"	18,431
1500	4116-GI	4'-0"	11'-0"	5'-0"	5'-2"	6'-0"	5'-10"	18,931
1800	4116-GI	4'-0"	11'-0"	5'-6"	5'-8"	6'-6"	6'-4"	20,031
2000	4117-GI	4'-0"	11'-0"	6'-0"	6'-2"	7'-0"	6'-10"	21,231
2500	6126-GI	6'-0"	12'-0"	4'-0"	4'-6"	6'-0"	5'-10"	24,529
3000	6126-GI	6'-0"	12'-0"	5'-6"	5'-8"	7'-0"	6'-10"	27,454
3500	11125-GI	11'-0"	12'-0"	3'-0"	3'-10"	5'-0"	4'-10"	37,890
5000	11175-GI	11'-0"	17'-0"	3'-0"	3'-10"	5'-0"	4'-10"	47,065
5500	11175-GI	11'-0"	17'-0"	4'-0"	4'-2"	5'-6"	5'-2"	51,451
6000	11195-GI	11'-0"	19'-0"	4'-0"	4'-2"	5'-6"	5'-2"	55,897
7000	11225-GI	11'-0"	22'-0"	4'-0"	4'-2"	5'-6"	4'-10"	65,883
8000	11225-GI	11'-0"	22'-0"	4'-6"	4'-8"	5'-6"	5'-2"	62,568
9000	11235-GI	11'-0"	27'-0"	4'-0"	4'-2"	5'-6"	5'-2"	73,880
10000	11295-GI	11'-0"	29'-0"	4'-6"	4'-8"	5'-6"	5'-2"	78,126
11000	11344-GI	11'-0"	34'-0"	4'-0"	4'-2"	5'-6"	5'-2"	89,241

- Notes:**
- Concrete: 28 Day Compressive Strength $f_c = 4500$ psi
 - Rebar: ASTM A-615 Grade 60
 - Mesh: ASTM A-185 Grade 65
 - Design: ACI-318-02 Building Code
 - ASTM C-857 "Minimum Structural Design Loading For Underground Precast Concrete Utility Structures"
 - Loads: H-20 Truck Wheel w/ 30% Impact Per AASHTO
 - Fill w/ Clean Water Prior to Start-Up Of System
 - Contractor To Supply & Install All Piping & Sampling Tees
 - Gray Water Only.

DETAIL
GREASE INTERCEPTOR
SCALE: NONE



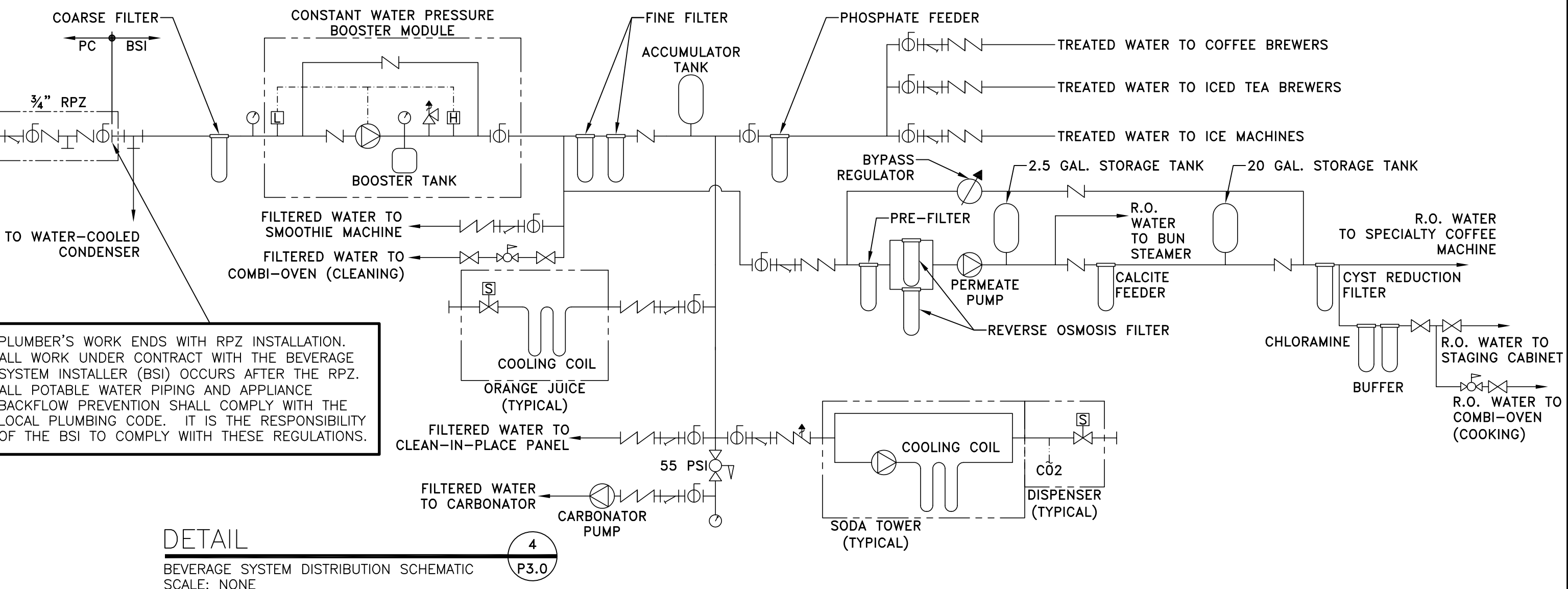
DETAIL
RECESSED MOP SINK
SCALE: 1/2"=1'-0"



DETAIL
LAVATORY (PUBLIC)
SCALE: 1/2"=1'-0"

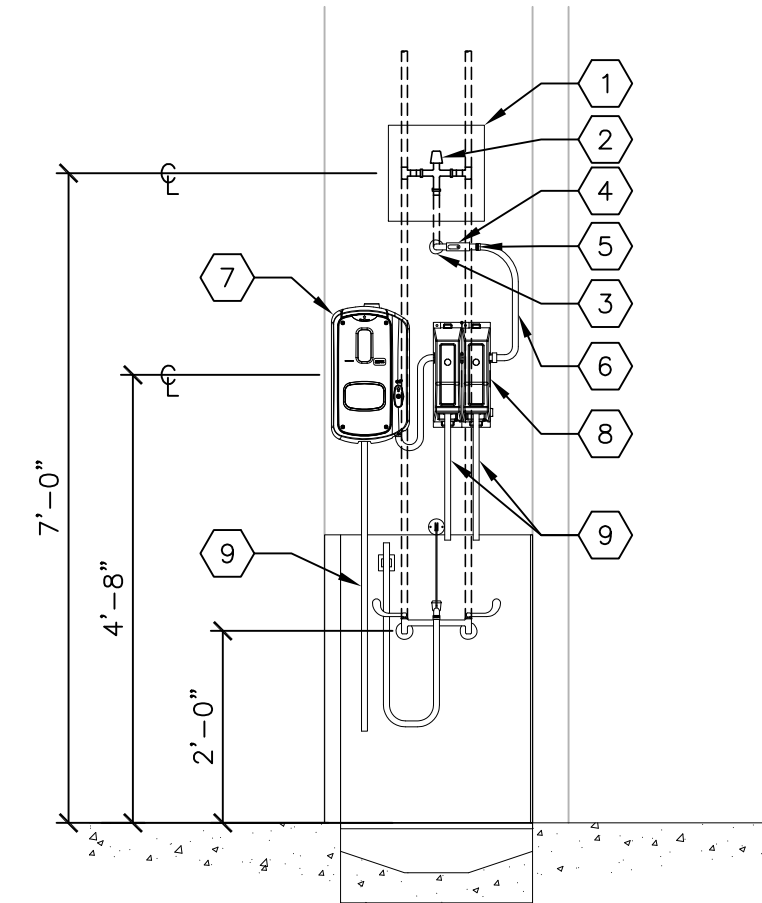
- KEYED NOTES:**
- ACCESS PANEL FOR THERMOSTATIC MIXING VALVE (SEE CHEMICAL SYSTEM INSTALLATION DETAIL)
 - ECOLAB CHEMICAL SYSTEM (SEE CHEMICAL SYSTEM INSTALLATION DETAIL)
 - 24"Wx36"H WALL GUARD (QTY. 2) FURNISHED WITH MOP SINK (SEE PLUMBING FIXTURE SCHEDULE)
 - MOP SINK FAUCET WITH INTEGRAL VACUUM BREAKER (SEE PLUMBING FIXTURE SCHEDULE)
 - HOSE FURNISHED WITH MOP SINK FAUCET (SEE PLUMBING FIXTURE SCHEDULE)
 - HOSE BRACKET FURNISHED WITH MOP FAUCET (SEE PLUMBING FIXTURE SCHEDULE) FLOOR GRATE

- KEYED NOTES:**
- FAUCET (SEE PLUMBING FIXTURE SCHEDULE)
 - LAVATORY OR HAND SINK (SEE PLUMBING FIXTURE SCHEDULE)
 - CORIAN COUNTERTOP - TOILET ROOMS ONLY (FURNISHED BY G.C.)
 - LAVATORY CARRIER - TOILET ROOMS ONLY (SEE ARCHITECTURAL DRAWINGS)
 - OUTLINE OF ADA COMPLIANT WRAP (SEE PLUMBING FIXTURE SCHEDULE)
 - THERMOSTATIC MIXING VALVE (SEE VALVE SCHEDULE)
 - HOT WATER AND HWC DOWN WALL (WITH BALANCING VALVE AND CHECK VALVE INSTALLED)
 - COLD WATER DOWN TO MIXING VALVE
 - TEMPERATED WATER TO FIXTURES
 - COLD WATER TO FIXTURES AS APPLICABLE.



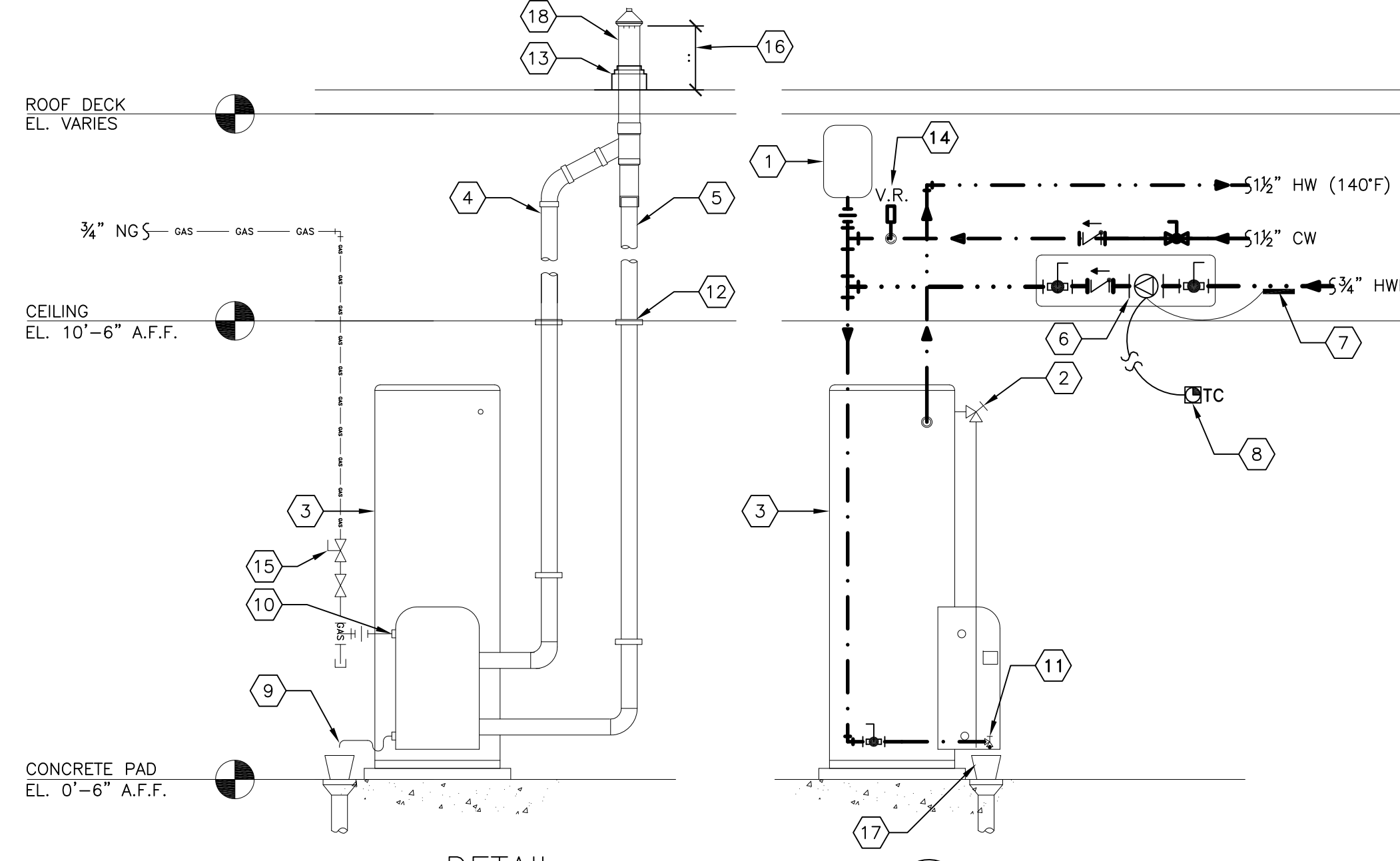
PLUMBER'S WORK ENDS WITH RPZ INSTALLATION. ALL WORK UNDER CONTRACT WITH THE BEVERAGE SYSTEM INSTALLER (BSI) OCCURS AFTER THE RPZ. ALL POTABLE WATER PIPING AND APPLIANCE BACKFLOW PREVENTION SHALL COMPLY WITH THE LOCAL PLUMBING CODE. IT IS THE RESPONSIBILITY OF THE BSI TO COMPLY WITH THESE REGULATIONS.

DETAIL
BEVERAGE SYSTEM DISTRIBUTION SCHEMATIC
SCALE: NONE



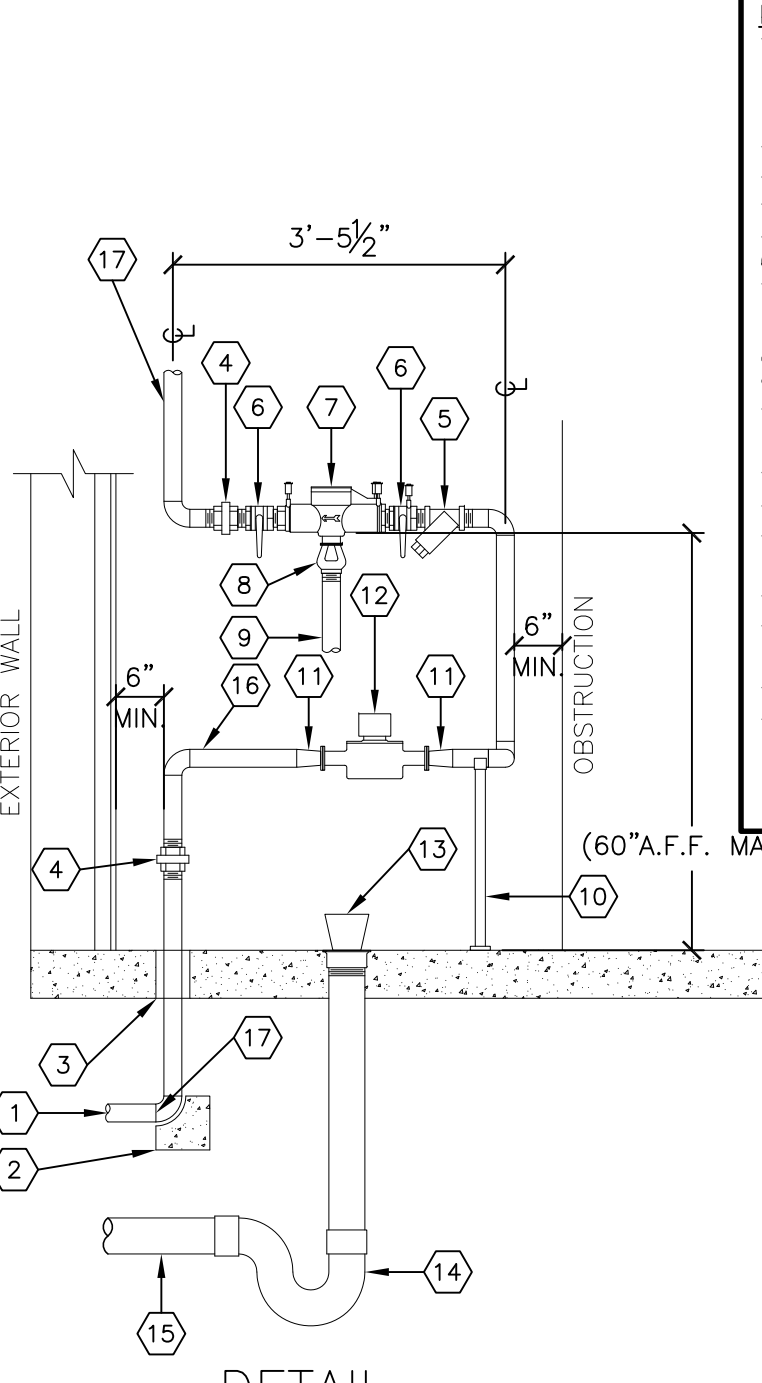
DETAIL
CHEMICAL SYSTEM INSTALLATION
SCALE: 1/2"=1'-0"

- KEYED NOTES:**
- 12"x12" ACCESS PANEL (COORDINATE INSTALLATION WITH G.C.)
 - THERMOSTATIC MIXING VALVE SET TO 110°F (SEE VALVE SCHEDULE)
 - PIPE THROUGH WALL WITH ESCUTCHEON PLATE
 - SHUT-OFF VALVE
 - 3/4" MHT CONNECTION
- ***PLUMBER'S WORK ENDS AT MHT CONNECTION***
- HOSE TO CHEMICAL SYSTEM
 - ECOLAB SMARTSHAPE CHEMICAL DISPENSER
 - ECOLAB SMARTSHAPE CHEMICAL DISPENSER
 - CHEMICAL DISPENSING HOSE



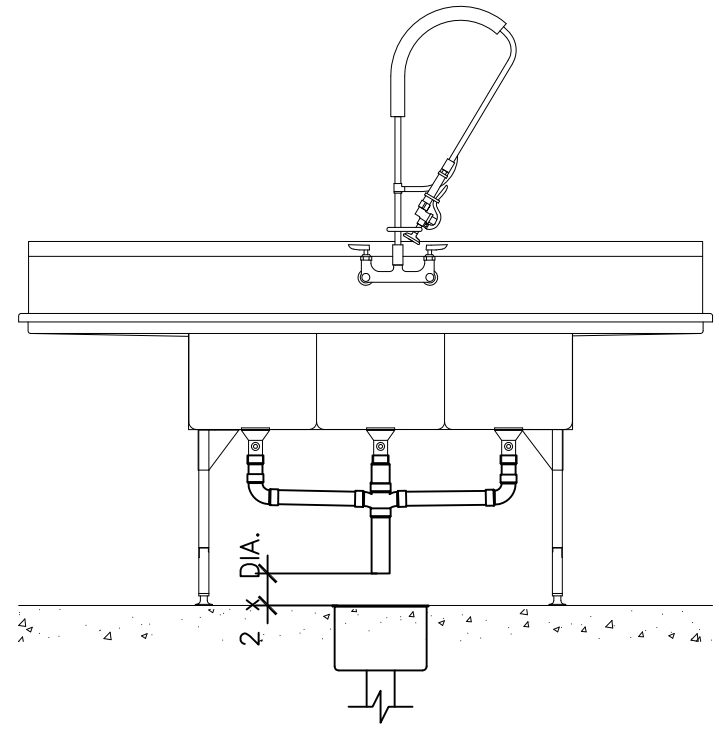
DETAIL
WATER HEATER PIPING
SCALE: NONE

- KEYED NOTES:**
- THERMAL EXPANSION TANK (SEE EXPANSION TANK SCHEDULE)
 - WATER HEATER PRESSURE/TEMPERATURE RELIEF VALVE (EXTEND TO FLOOR DRAIN)
 - WATER HEATER (SEE WATER HEATER SCHEDULE)
 - 3" PVC INTAKE. (SIZE PER MANUFACTURER'S INSTALLATION INSTRUCTIONS)
 - 3" ABS MIN. 84" REQ'D. (SIZE PER MANUFACTURER'S INSTALLATION INSTRUCTIONS).
 - RECIRCULATION PUMP (SEE PUMP SCHEDULE)
 - STRAP-ON AQUASTAT FOR PUMP CONTROL
 - TIMECLOCK TO SHUT DOWN PUMP AND WATER HEATER DURING UNOCCUPIED HOURS
 - SEALED-COMBUSTION CONDENSATE DRAIN (EXTEND TO FLOOR DRAIN)
 - GAS CONNECTION
 - WATER HEATER DRAIN (EXTEND TO FLOOR DRAIN)
 - PIPE SUPPORT EVERY 5 FT. MINIMUM
 - PIPE BOOT BY PORTALS PLUS (OR EQUAL)
 - PROVIDE VACUUM RELIEF VALVE FOR BOTTOM-FED WATER HEATERS (ANSI Z21.22) WILKINS MODEL VR10.
 - GAS PRESSURE REGULATOR (AS APPLICABLE).
 - CONCENTRIC VENT KIT. MAINTAIN 12" MIN. CLEARANCE ABOVE HIGHEST ANTICIPATED SNOW LEVEL. MAXIMUM OF 24" ABOVE ROOF.
 - FLOOR DRAIN WITH FUNNEL OR FLOOR SINK. REFER TO P1.2 FOR PLAN AND P4.1 FOR SCHEDULE.
 - 4.5" COMBINED CONCENTRIC VENT. (SIZE PER MANUFACTURER'S INSTALLATIONS INSTRUCTIONS).



DETAIL
INCOMING WATER SERVICE
SCALE: 1/2"=1'-0"

- KEYED NOTES:**
- INCOMING UNDERGROUND WATER SERVICE SIZED PER DOMESTIC WATER CALCULATIONS. (MIN. 2")
 - BLOCKING AT CHANGES IN DIRECTION
 - MINIMUM 1/2" ANNULAR CLEARANCE
 - UNION
 - BRONZE STRAINER
 - QUARTER-TURN BALL VALVE (RPZ) ASSEMBLY
 - AIR GAP FOR RELIEF VALVE
 - PIPING FROM AIR GAP TO FLOOR DRAIN
 - GALVANIZED STEEL PIPE SUPPORTS AS REQUIRED
 - 2"x1 1/2" BUSHING
 - 1 1/2" WATER METER
 - FLOOR DRAIN-PITCH FLOOR TOWARDS DRAIN
 - P-TRAP
 - PIPE TO SEWER-PITCH AND VENT PER CODE
 - 2" PIPE FOR WATER SERVICE
 - WATER PIPING FROM 5 FT. FROM BUILDING TO CEILING PENETRATION SHALL BE COPPER.



DETAIL
INDIRECT DRAINAGE PIPING (TYP.)
SCALE: 1/2"=1'-0"

PREPARED BY: **ARRIS ARCHITECTURE**
 Arris Architecture, LLC
 3436 New Castle Dr.
 Loveland, CO 80538
 coreys@arrisinc.net

© 2022 McDonald's USA, LLC
McDonald's USA, LLC
 These drawings and specifications are the confidential and proprietary property of McDonald's USA, LLC and shall not be copied or reproduced without written authorization. The contract documents shall be read in their entirety and shall govern over any other documents. Use of these drawings for reference or example on another project requires the services of properly licensed architects and engineers. Reproduction of the contract documents for reuse on another project is not authorized.

BY	
DESCRIPTION	
DATE	
REV	

TITLE: 2022 STANDARD BUILDING - BB20
 4597 - WOOD/WOOD
 DESCRIPTION: WOOD BEARING WALLS W/ BRICK EXTERIOR FINISH & CI WOOD TRUSS ROOF FRAMING
 SITE ID: ELF5/BATTENMETAL PANEL/BRICK EXTERIOR FINISH
 SITE ADDRESS: 13151 S. PARKER ROAD PARKER, CO 80134
 ARRS PROJECT #: 0876-22

SHEET NO. **P3.0**
 DETAILS

COORDINATION SCHEDULE

GENERAL REQUIREMENTS	FURNISH	INSTALL	FINAL CONNECTION	NOTES
MECHANICAL PERMIT	MC			1-3
HOT WORK (WELDING) PERMIT (IF APPLICABLE)	KES			1-3
REFRIGERATION PERMIT (IF APPLICABLE)	MC			1-3
PLUMBING PERMIT	PC			1-3
ELECTRICAL PERMIT	EC			1-3
FIRE SPRINKLER PERMIT (IF APPLICABLE)	FPC			1-3
FIRE ALARM PERMIT (IF APPLICABLE)	FAC			1-3
CONTRACTOR COORDINATION REQUIREMENTS				
HEATING & AIR-CONDITIONING				
ROOFTOP UNITS, INTAKE AND RELIEF	MCD CP	MC		1-5, 17, 22
ROOF CURBS	MCD CP	MC		1-3, 20, 22
GAS PIPING AND GAS PIPE KIT	PC	PC	PC	1-3, 14, 22-23
CONTROLS WIRING	MC	EC	EC	1-3, 19, 22, 24
POWER WIRING	EC	EC	EC	1-3, 19, 22, 24
CONDENSATE TRAP	MC	PC		1-3, 22-23
CONDENSATE PIPING (IF APPLICABLE)	PC	PC		1-3, 22-23
DUCT-MOUNTED SMOKE DETECTOR	MC	MC	EC	1-3, 22, 24
GENERAL EXHAUST SYSTEMS				
EXHAUST FANS	MCD CP	MC		1-3, 17, 22
ROOF CURBS	MCD CP	MC		1-3, 22
CONTROLS (WHERE APPLICABLE)	MC	EC	EC	1-3, 22, 24
POWER WIRING	EC	EC	EC	1-3, 22, 24
TEMPERATURE CONTROLS				
BUILDING AUTOMATION SYSTEM	MCD CP	MC	EC	1-3, 22, 24
REMOTE SENSORS (RH AND/OR TEMPERATURE)	MC	MC	EC	1-3, 22, 24
CONTROLS WIRING (WHERE APPLICABLE)	MC	EC	EC	1-3, 22, 24
POWER WIRING	EC	EC	EC	1-3, 22, 24
DUCTWORK AND ACCESSORIES				
GALVANIZED SHEET METAL DUCTWORK	MC	MC		1-3, 22
EXTERNAL INSULATION	MC	MC		1-3, 22
INTERNAL INSULATION (IF APPLICABLE)	MC	MC		1-3, 22
WEATHERPROOFING (IF APPLICABLE)	MC	MC		1-3, 22
SPIN-IN COLLARS	MC	MC		1-3, 22
FLEXIBLE DUCTWORK	MC	MC		1-3, 22
VOLUME/BALANCING DAMPERS	MC	MC		1-3, 22
FIRE DAMPERS (IF APPLICABLE)	MC	MC		1-3, 22
FIRESTOPPING (IF APPLICABLE)	MC	MC		1-3, 22
AIR DEVICES AND ACCESSORIES	MC	MC	MC	1-3, 7, 22, 28
PLUMBING SYSTEMS				
WATER HEATERS	MCD CP	PC	PC	1-3, 11-12, 23
HOT AND COLD WATER PIPE	PC	PC	PC	1-3, 23
VENTS AND INTAKES	PC	PC	PC	1-3, 23
THERMOSTATIC MIXING VALVE	PC	PC	PC	1-3, 23
POWER AND CONTROL WIRING	EC	EC	EC	1-3, 23-24
KITCHEN EXHAUST SYSTEMS				
MCDONALD'S BACKSHELF EXHAUST HOODS	KES	KEI		1-3, 6, 22, 27
CANOPY EXHAUST HOODS (IF APPLICABLE)	KES	KEI		1-3, 6, 22, 27
BLACK IRON DUCTWORK	KES	KEI		1-3, 6, 22
STAINLESS STEEL DUCTWORK (IF APPLICABLE)	KES	KEI		1-3, 6, 22
ALUMINUM DUCTWORK (IF APPLICABLE)	KES	KEI		1-3, 6, 22
UL LISTED DUCT WRAP	MC	MC		1-3, 6, 22
FIRE-RATED DUCT ENCLOSURE (IF APPLICABLE)	GC	GC		1-3, 6, 20, 22
EXHAUST FANS	MCD CP	MC		1-3, 6, 17, 22
ROOF CURBS	MCD CP	MC		1-3, 6, 20, 22
CURB EXTENSIONS	MC	MC		1-3, 6, 22
CONTROLS (WHERE APPLICABLE)	EC	EC	EC	1-3, 6, 22, 24
POWER WIRING	EC	EC	EC	1-3, 6, 22, 24
FIRE SUPPRESSION SYSTEM	KES	KES	KES	1-3, 16, 22, 27
KITCHEN EQUIPMENT				
COOLER/FREEZER	KES	GC		1-3, 27
EVAPORATOR COILS	KES	MC		1-3, 27
CONDENSATE PIPING	PC	PC	PC	1-3, 23, 27
REMOTE CONDENSING UNIT (MAC)	KES	MC		1-3, 22, 27
ROOF CURBS	MC	MC		1-3, 22
REFRIGERATION PIPING	KES	MC	MC	1-3, 22, 27
POWER WIRING	EC	EC	EC	1-3, 22, 24, 27
CONTROL WIRING	EC	EC	EC	1-3, 24, 27
PIPE PORTALS	MC	MC		1-3, 22
ICE MACHINES	KES	KEI		1-3, 27
WATER SUPPLY PIPING	KES	KEI	BSI	1-3, 27
REMOTE CONDENSING UNITS	KES	MC		1-3, 22, 27
ROOF CURBS	MC	MC		1-3, 22, 27
REFRIGERATION PIPING	KES	MC	MC	1-3, 22, 27
POWER WIRING	EC	EC	EC	1-3, 22, 24, 27
CONTROL WIRING	KES	EC	EC	1-3, 24, 27
PIPE PORTALS	MC	MC		1-3, 22
GRILLS	KES	KES		1-3, 27
GAS PIPING (IF APPLICABLE)	PC	PC	PC	1-3, 23, 27
POWER WIRING	EC	EC	EC	1-3, 24, 27
CONTROL CABLE (6" CLAMSHELL ONLY)	MC	EC	EC	1-3, 23, 24, 27
FRYERS	KES	KES		1-3, 27
GAS PIPING (IF APPLICABLE)	PC	PC	PC	1-3, 23, 27
POWER WIRING	EC	EC	EC	1-3, 24, 27
3-COMPARTMENT SINK	KES	KES		1-3, 12, 27
FAUCETS AND PRE-RINSE SPRAYER	KES	KES		1-3, 27
WATER SUPPLY PIPING	PC	PC	PC	1-3, 23, 27
SANITARY DRAIN PIPING	PC	PC	PC	1-3, 23, 27
HAND SINKS	MCD CP	PC	PC	1-3, 23, 27
FAUCET	MCD CP	PC	PC	1-3, 23, 27
WATER SUPPLY PIPING	PC	PC	PC	1-3, 23, 27
SANITARY DRAIN PIPING	PC	PC	PC	1-3, 23, 27
VEGETABLE SINK	KES	KES		1-3, 23, 27
FAUCET	KES	KES		1-3, 23, 27
WATER SUPPLY PIPING	PC	PC	PC	1-3, 23, 27
SANITARY DRAIN PIPING	PC	PC	PC	1-3, 23, 27
WASHING MACHINE	KES	KES		1-3, 23, 27
WATER SUPPLY PIPING	PC	PC	PC	1-3, 23, 27
SANITARY DRAIN PIPING	PC	PC	PC	1-3, 23, 27
WARE WASHER	KES	KES		1-3, 23, 27
WATER SUPPLY PIPING	PC	PC	PC	1-3, 23, 27
SANITARY DRAIN PIPING	PC	PC	PC	1-3, 23, 27
MISCELLANEOUS ITEMS				
FIRE SPINKLER SYSTEMS	FPC	FPC	FPC	1-3, 15, 25
HVAC EQUIPMENT START-UP	MC			1-3, 22
TEST, ADJUST AND BALANCE HVAC SYSTEMS	TAB			1-3, 22
DOOR GRILLES (IF APPLICABLE)	MC	GC		1-3, 20, 22
ROOF/WALL OPENINGS	GC			1-3, 20-24
APPLIANCE BACKFLOW PREVENTION	KES/BSI	PC	PC	1-3, 23, 27
CO2 DETECTION SYSTEM	KES/BSI	EC/BSI	EC/BSI	1-3, 22, 27

- NOTES:**
- THIS SCHEDULE IS INTENDED AS A GUIDE FOR THE WORK TO BE PERFORMED. ALL WORK SHALL BE COORDINATED BETWEEN THE MCDONALD'S AREA CONSTRUCTION MANAGER AND ALL GC AND O/O SUBCONTRACTORS.
 - ONE (1) COPY OF THE DECOR PACKAGE DRAWINGS SHALL BE SUPPLIED TO THE GENERAL CONTRACTOR AND EACH OF THE SUBCONTRACTORS. IT SHALL BE THE RESPONSIBILITY OF THE GENERAL CONTRACTOR AND THE SUBCONTRACTORS TO INSURE THAT THEY HAVE RECEIVED THE DECOR PACKAGE DRAWINGS.
 - FOR ANY WORK NOT CLARIFIED IN THIS SCHEDULE OR IN THE NOTES AND SPECIFICATIONS, PLEASE CONSULT THE MCDONALD'S CONSTRUCTION MANAGER FOR SCOPE OF WORK.
 - ALL ROOFTOP UNIT EQUIPMENT SUPPLIED BY THE MECHANICAL CONTRACTOR AND THE KITCHEN EQUIPMENT SUPPLIER SHALL BE ON SITE AT THE SAME TIME FOR A SINGLE CRANE LIFT. EQUIPMENT SITE ARRIVAL DATE SHALL BE COORDINATED BETWEEN THE CONSTRUCTION MANAGER, MECHANICAL CONTRACTOR AND KITCHEN EQUIPMENT SUPPLIER.
 - ALL ROOFTOP UNITS INSTALLED IN MCDONALD'S RESTAURANTS SHALL BE HIGH EFFICIENCY EQUIPMENT. THE INSTALLATION OF STANDARD EFFICIENCY ROOFTOP UNITS IS PROHIBITED.
 - ALL KITCHEN EQUIPMENT REQUIRING EXHAUST SHALL BE INSTALLED IN ACCORDANCE WITH THESE PLANS. ANY VARIATION FROM THESE PLANS SHALL BE REPORTED TO THE CONSTRUCTION MANAGER AND THE ENGINEER-OF-RECORD.
 - WHERE GYPSUM BOARD CEILINGS ARE INSTALLED, THE MECHANICAL CONTRACTOR SHALL SUPPLY DRYWALL MOUNTING FRAMES FOR LAY-IN TYPE DIFFUSERS.
 - ALL WORK SHOWN ON P1.6 DRAWING(S) SHALL BE COMPLETED BY THE BEVERAGE SYSTEM INSTALLER (OR K.E.S.) UNLESS OTHERWISE NOTED IN THE PLUMBING DRAWINGS.
 - ALL WORK ON P1.0 & P1.2 DRAWING(S) SHALL BE BY THE PLUMBING CONTRACTOR.
 - THE BEVERAGE SYSTEM INSTALLER FURNISHES, RUNS AND CONNECTS ALL FLEXIBLE WATER AND SYRUP LINES FOR ALL AFFECTED EQUIPMENT INCLUDING THE FOLLOWING:
 - HOT CHOCOLATE
 - COFFEE BREWER
 - ICE MACHINE
 - O.J.
 - SODA TOWERS
 - ALL WATER HEATERS INSTALLED IN MCDONALD'S RESTAURANTS SHALL BE HIGH EFFICIENCY SEALED-COMBUSTION WATER HEATERS. THE INSTALLATION OF STANDARD EFFICIENCY GRAVITY-VENTED WATER HEATERS IS PROHIBITED.
 - THE CONSTRUCTION MANAGER, PLUMBING CONTRACTOR AND KITCHEN EQUIPMENT SUPPLIER SHALL COORDINATE WHICH SOILED DISHWASHER (3-COMPARTMENT SINK) IS BEING INSTALLED IN THE RESTAURANT.
 - ALL GAS PIPING FOR COOKING EQUIPMENT SHALL TERMINATE IN THE CEILING PRIOR TO THE INSTALLATION OF THE PIPING CHASE. UPON INSTALLATION OF THE CHASE, THE GAS PIPING SHALL THEN BE CONTINUED IN THE CHASE FOR FINAL CONNECTION TO THE APPLIANCE.
 - ALL GAS PIPING FOR ROOFTOP EQUIPMENT SHALL BE BROUGHT UP THROUGH THE BASE OF THE UNIT TO MINIMIZE ROOF PENETRATIONS. WHERE THIS IS NOT POSSIBLE, THE PLUMBING CONTRACTOR SHALL PROVIDE THE NECESSARY PIPE PORTALS ON ROOF.
 - ALL FIRE PROTECTION DRAWINGS CONTAINED WITHIN THIS SET ARE STRICTLY FOR REFERENCE ONLY. FIRE SPRINKLER DRAWINGS SHALL BE DESIGNED AND PERMITTED BY A FIRE PROTECTION CONTRACTOR.
 - ALL R-102 WET CHEMICAL FIRE SUPPRESSION SYSTEMS FOR TYPE I HOODS SHALL BE DESIGNED AND INSTALLED BY A LOCAL ANSUL AGENT. THE USE OF DRY CHEMICAL SYSTEMS IS PROHIBITED. THE LOCAL ANSUL AGENT CONTRACT IS HANDLED THROUGH THE KITCHEN EQUIPMENT SUPPLIER.
 - ALL ROOFTOP UNITS AND EXHAUST FANS ARE SUPPLIED WITH A FACTORY-INSTALLED DISCONNECT SWITCH.
 - ELECTRICAL CONTRACTOR SHALL PROVIDE DISCONNECT SWITCHES FOR REMOTE CONDENSING UNITS.
 - ALL ELECTRICAL CONDUITS FOR ROOFTOP EQUIPMENT SHALL BE BROUGHT UP THROUGH THE BASE OF THE UNIT TO MINIMIZE ROOF PENETRATIONS. WHERE THIS IS NOT POSSIBLE, THE ELECTRICAL CONTRACTOR SHALL PROVIDE THE NECESSARY PIPE PORTALS ON ROOF.
 - SEE ARCHITECTURAL DRAWINGS FOR ADDITIONAL INFORMATION.
 - SEE STRUCTURAL DRAWINGS FOR ADDITIONAL INFORMATION.
 - SEE MECHANICAL DRAWINGS FOR ADDITIONAL INFORMATION.
 - SEE PLUMBING DRAWINGS FOR ADDITIONAL INFORMATION.
 - SEE ELECTRICAL DRAWINGS FOR ADDITIONAL INFORMATION.
 - SEE FIRE PROTECTION DRAWINGS FOR ADDITIONAL INFORMATION.
 - SEE FIRE ALARM DRAWINGS FOR ADDITIONAL INFORMATION.
 - SEE KITCHEN DRAWINGS FOR ADDITIONAL INFORMATION.
 - SEE DECOR DRAWINGS FOR ADDITIONAL INFORMATION.

EXPANSION TANK SCHEDULE

TAG	MANUFACTURER	MODEL	TOTAL VOL.	CONNECTION	ACCESSORIES
ET-1	AMTROL	ST-12	4.4 GAL.	3/4"	-

NOTES:
1. SEE DETAIL 6 ON DRAWING P3.0

PUMP SCHEDULE

TAG	MANUFACTURER	MODEL	HP	V	Ø	HZ	ACCESSORIES
P-1	GRUNDFOS	UP 15-18 B7	1/25	120	1	60	1-3

ACCESSORIES:
1. TIMECLOCK
2. AQUASTAT
3. CHECK VALVE

NOTES:
1. SEE ELECTRICAL DRAWINGS FOR TIMECLOCK WIRING
2. DESIGN: 2 GPM, 7 FT. HEAD
3. SEE DETAIL 6 ON DRAWING P3.0

BACKFLOW PREVENTER SCHEDULE

TYPE	MFR.	MODEL	ASSE LISTING	SERVES	LOCATION
AG	FURN. WITH CHEM. SYS.	10558	10558	CHEMICAL SYSTEM	DIN. RM.-MOP SINK
AG	FURN. WITH CHEM. SYS.	10558	10558	CHEMICAL SYSTEM	KITCHEN-MOP SINK
AVB	FURN. WITH CHEM. SYS.	1001	1001	CHEMICAL SYSTEM	SUPP. RM.-3-COMP
AVB	FURN. WITH FAUCET	-	-	MOP SINK FAUCET	SEE DRAWINGS
VB	FURN. WITH HB	1011	1011	WALL HYDRANT	SEE DRAWINGS
DCV	FURN. WITH HB	1052	1052	YARD HYDRANT	TRASH CORRAL
DCV	FURN. WITH HB	1052	1052	ROOF HYDRANT	ROOF
DCV	WATTS	SD-3	1022	SODA TOWERS AND SPEC. COFFEE	
RPZ	WILKINS	375XL-SXL-AG	1013	INCOMING WATER	SUPPORT ROOM
RPZ	WILKINS	375XL-AG	1013	FILTRATION SYSTEM	SUPPORT ROOM

INTERCEPTOR SCHEDULE

TAG	DESCRIPTION	MANUFACTURER	MODEL	ACCESSORIES	NOTES
GI-1	EXTERIOR GREASE INTERCEPTOR			PRECAST CONCRETE 1500 GALLONS	1-3

NOTES:
1. SEE GREASE INTERCEPTOR NOTES ON DRAWING P4.0
2. GREASE INTERCEPTOR IS SIZED FOR CITY SEWER APPLICATIONS ONLY. DO NOT USE FOR SEPTIC FIELDS.
3. INTERIOR OF PRECAST CONCRETE SHALL BE COATED WITH TWO (2) LAYERS OF NOVOLAC EPOXY

PLUMBING FIXTURE SCHEDULE

TAG	DESCRIPTION	MANUFACTURER	MODEL	WATER USE	ACCESSORIES/COMMENTS
F-1	FAUCET FOR LAV-1	SLOAN	AER-DEC INTEGRATED	1.0 GPM (0.17 GAL/10 SEC CYCLE)	BASYS FAUCET OPERATION: SENSOR
F-2	FAUCET FOR MS-1	ZURN	ZB43M4		FAUCET OPERATION: MANUAL SEE DETAIL 2 ON DRAWING P3.0
FCO	6x6 FLOOR CLEAN OUT	ZURN JAY R. SMITH	Z1400-SZ 4040		SEE DRAWINGS FOR PIPE SIZES SEE NOTE 8
FD-2	6x6 FLOOR DRAIN	ZURN JAY R. SMITH	Z415-SZ 2005		PIPE SIZE: 3" STRAINER SIZE: 6" NICKEL BRONZE FUNNEL: NONE SEE NOTE 8
FS-1	12x12 FLOOR SINK WITH HALF-GRATE	ZURN JAY R. SMITH	ZN1901 3435		PIPE SIZE: 3" DOME STRAINER: ALUMINUM GRATE: HALF - NICKEL-BRONZE SEE NOTE 8
FS-2	8x8 FLOOR SINK WITH HALF-GRATE	ZURN JAY R. SMITH	ZN1910 3415		PIPE SIZE: 3" DOME STRAINER: ALUMINUM GRATE: HALF - NICKEL-BRONZE SEE NOTE 8
FS-3	8x8 FLOOR SINK	ZURN JAY R. SMITH	ZN1910 3415		PIPE SIZE: 3" DOME STRAINER: ALUMINUM GRATE: FULL - NICKEL-BRONZE SEE NOTE 8
HB-1	WALL HYDRANT	WOODFORD JAY R. SMITH	B65 Z1320-EZ 5519		WALL CLAMP: ADJUSTABLE WALL THICKNESS: M/S = 9 1/2" W/W = 1 3/4"
HB-2	YARD HYDRANT	WOODFORD	S4H		SEE NOTES 4 & 9
HB-3	ROOF HYDRANT	WOODFORD	RHYZ-MS		SEE NOTE 5
HS-1	STAINLESS STEEL HAND SINK	ADVANCE TABCO	7-PS-61		FAUCET: INCLUDED WITH SINK SEE NOTES 6 & 10
HS-2	STAINLESS STEEL HAND SINK - ADA	ADVANCE TABCO	7-PS-26		FAUCET: INCLUDED WITH SINK SEE NOTES 6 & 10
HS-3	STAINLESS STEEL HAND SINK - SPACESAVER	ADVANCE TABCO	7-PS-22		FAUCET: INCLUDED WITH SINK SEE NOTES 6 & 10
LAV-1	LAVATORY	SLOAN	AER-DEC INTEGRATED		AER-DEC INTEGRATED SINK (SLOAN SOAP DISPENSER, BASYS FAUCET, SLOAN HAND DRYER, AIR BASIN)
MS-1	MOP SINK	FIELD FABRICATED	RECESSED - FLOOR (24x24x12) 9-OP-24FM		FAUCET: F-2 INCLUDES HOSE, HOSE BRACKET AND TWO (2) 24"Wx36"H WALL GUARDS SEE DETAIL 2 ON P3.0
TD-1	TRENCH DRAIN	ZURN	Z886-SMG		CLASS A STAINLESS STEEL MESH SCREEN GRATE. NO-HUB BOTTOM OUTLET. BOTTOM DOME STRAINER. CLOSED END CAP
UR-1	ADA WALL-HUNG URINAL			0.125 GPF	FLUSH VALVE: SLOAN CX-8198-0.125 SEE NOTE 2 1" I.P.S., 1" REAR SPUD
WB-1	WALL BOX FOR WASHING MACHINE	SIOUX CHIEF	SU-1009 696-2313		HAMMER ARRESTERS INCLUDED WITH BOX SEE NOTE 7
WB-2	WALL BOX FOR WAREWASHER	SIOUX CHIEF	696-1011		HAMMER ARRESTER INCLUDED WITH BOX MOUNTING HEIGHT: 12" A.F.F. SEE NOTE 7
WC-1	WATER CLOSET	SLOAN	ST-2009	1.6 GPF	FLUSH VALVE: SLOAN CX-8158-1.6 1" I.P.S., 1 1/2" REAR SPUD FLUSH VALVE OPERATION: SENSOR SEAT: BEMIS MODEL 2155CT
WC-2	ADA WATER CLOSET	SLOAN	ST-2029	1.6 GPF	FLUSH VALVE: SLOAN CX-8158-1.6 1" I.P.S., 1 1/2" REAR SPUD FLUSH VALVE OPERATION: SENSOR SEAT: BEMIS MODEL 2155CT
-	SOILED DISHTABLE (3-COMPARTMENT SINK)	-	-	-	ITEM: 151.07 SEE NOTE 7
-	VEGETABLE PREPARATION SINK	-	-	-	ITEM: 134.03 SEE NOTE 7
-	WAREWASHER	ECOLAB	QSR TSC WITH VAPOR VENT HOOD	-	ITEM: 152.05 WALL BOX: WB-2 SEE NOTE 7
-	WASHING MACHINE	-	-	-	ITEM: 223.07 WALL BOX: WB-1 SEE NOTE 7

ROOF DRAINS AND ACCESSORIES

TAG	DESCRIPTION	MANUFACTURER	MODEL	ACCESSORIES	NOTES
RD-1 THRU RD-4	COMBINATION MAIN ROOF AND OVERFLOW DRAIN	ZURN	Z165		SEE DRAWINGS FOR PIPE SIZES ROOF OPENING: 30"x14"
DC-1	OVERFLOW DOWNSPOUT COVER	ZURN JAY R. SMITH	Z199-SS 1770-BS		SEE DRAWINGS FOR PIPE SIZES BIRD SCREEN

NOTES:
1. SEE MCDONALD'S PROJECT MANUAL FOR ADDITIONAL MANUFACTURERS
2. PLUMBING CONTRACTOR SHALL COORDINATE WITH G.C. TO PROVIDE BLOCKING FOR PROPER URINAL SUPPORT
3. PLUMBING CONTRACTOR SHALL COORDINATE WITH G.C. TO PROVIDE INTERIOR BLOCKING ON W/W BUILDING FOR WALL CLAMP
4. YARD HYDRANT IS FOR TRASH CORRAL - SEE SITE PLAN FOR LOCATION
5. PLUMBING CONTRACTOR SHALL ROUTE 1/2" DRAIN PIPE FROM HOSE BIBB TO NEAREST FLOOR DRAIN OR FLOOR SINK
6. PLUMBING CONTRACTOR SHALL COORDINATE WITH G.C. TO PROVIDE BLOCKING FOR PROPER SINK SUPPORT
7. SEE KITCHEN DRAWINGS FOR ADDITIONAL INFORMATION - PLUMBING CONTRACTOR SHALL COORDINATE INSTALLATION WITH K.E.S.
8. PLUMBING CONTRACTOR SHALL SPECIFY CONNECTION MATERIAL/TYPE WHEN ORDERING
9. PLUMBING CONTRACTOR SHALL SPECIFY BURY DEPTH WHEN ORDERING
10. PLUMBING CONTRACTOR SHALL PROVIDE GRID DRAIN, P-TRAP AND VALVE STOPS FOR ALL SINKS & LAVS

WATER HEATER SCHEDULE