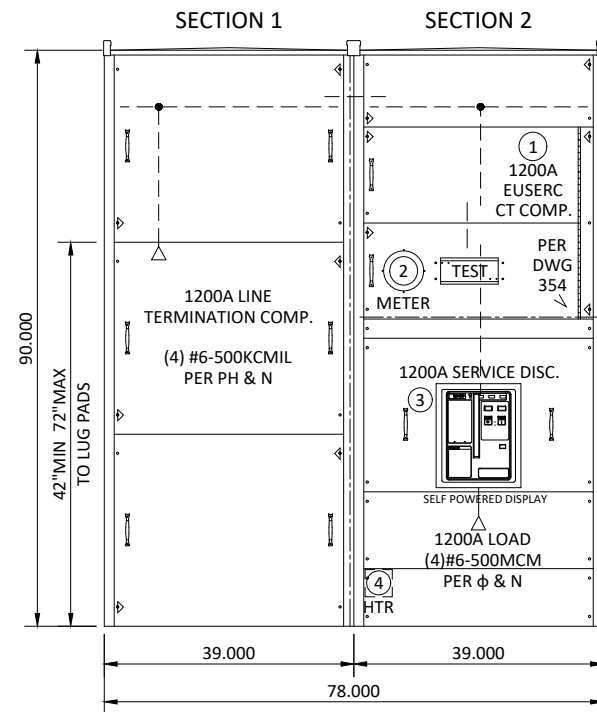


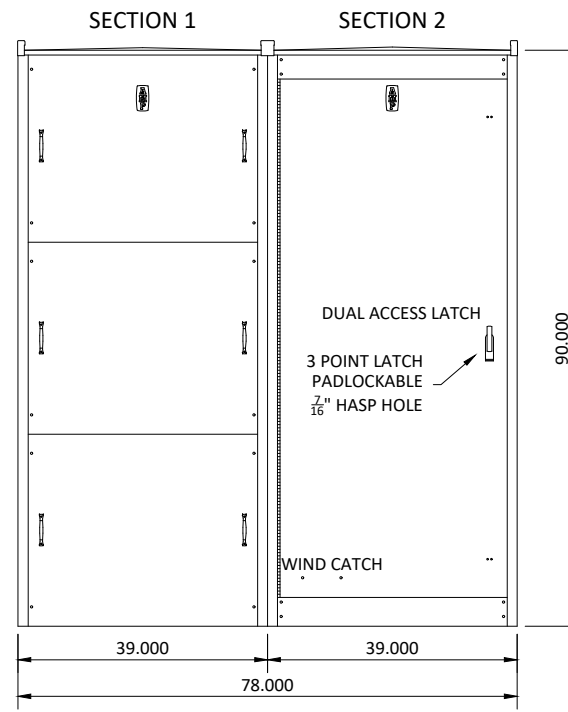
FRONT ELEVATION

WITH 3R DOOR REMOVED



FRONT ELEVATION

WITH 3R DOOR INSTALLED

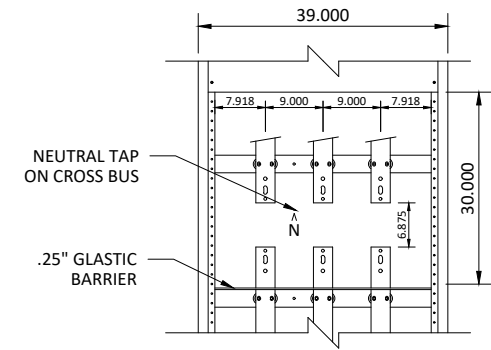
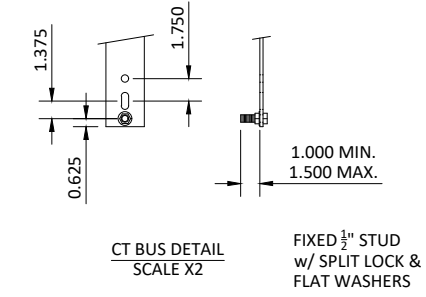


(EUSERC) REQUIREMENTS
 TAMPER RESISTANT FASTENERS:
 SEALING STUDS REQUIRED ON ALL
 UN-METERED COVERS
 ADDITIONAL NOTES:
 NEUTRAL MUST BE TAPPED (10-32)
 FOR UTILITY PROVIDED LUG

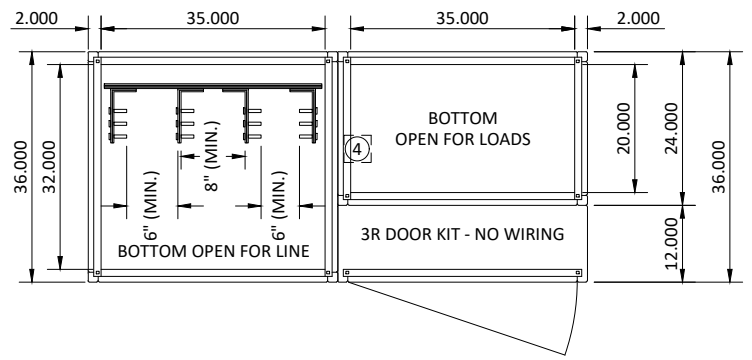
DATE	BY	DESCRIPTION
01/06/23	SMB	QUOTE

TYPE F SWITCHBOARD SPECIFICATION

SYSTEM	AMPACITY	VOLTAGE
	1200A	208Y/120
	3PH	WIRE 4W
	60HZ	SCCR 65,000A
	AL	CONFIG MAIN BREAKER
ENCL	TYPE NEMA 3R, NON VENTED	
	FINISH ASA 61 GRAY	
STANDARDS	CERTIFICATION U.L. LISTED 891	
	SE SUSE	SUITABLE FOR USE AS SERVICE ENTRANCE
	UTILITY CORE POWER	
GENERAL	FREE STANDING, FRONT ACCESSIBLE CLASS 1, DEADFRONT, FORMED 12 GA. STEEL FRAMING WITH 14 GA. STEEL PAN FORMED COVER PLATES POWDER PAINTED, TIN PLATED ALUMINUM AND/OR SILVER PLATED COPPER BUS	



EUSERC CT COMPARTMENT
 0-1000 AMP, 0-600 VOLTS, 3Ø 4 WIRE
 REFERENCE EUSERC DWG 320, 325, 332



PLAN

*****AHJ & UTILITY APPROVAL
 REQUIRED
 NOT SEISMIC RATED**

- - - =ONE-LINE
- - - =BARRIER
- ▷ =SEALING STUD
- ⊕ =CARRIAGE BOLT
- S.U. = SHIPPING UNIT
- SP = SPACE

BILL OF MATERIALS				
ITEM	QTY	PART NUMBER	DESCRIPTION	SUPPLIER
1	1	CT12	1200A EUSERC CT COMPARTMENT	AMP
2	1	CFI1013CT	PANEL MOUNT 13T METER SOCKET	CFI
	1	METERRINGGW-OBAR	METER RING W/O BAR	CFI
	1	MR-4	SEALING RING	CFI
3	1	SBS6123HEA10CUNMNNNNHNBX	1200A 3P 100% RATED LSI C.B. W/ARC MAINTENANCE	EATON
4	1	17040715034	400W HEATER W/THERMOSTAT	PFANNENBERG
5				
6				
7				
8				

SEE AMP DRAWING "AMPSTL" FOR DEVICE LUG SIZES

SHEET TITLE	PARKER, CO
JOB NAME:	McDONALDS
DIST/CUST:	GRAYBAR
CUST PO#	47035999888

AMP AMERICAN MIDWEST POWER
 3131 VICKSBURG LANE PH (763)551-1555
 MINNEAPOLIS, MN 55447 FAX (763)551-9275

THIS DRAWING AND THE INFORMATION THEREON ARE THE PROPERTY OF AMERICAN MIDWEST POWER AND ARE NOT TO BE COPIED, REPRODUCED, OR DISCLOSED TO OTHERS WITHOUT THE EXPRESS WRITTEN CONSENT OF AMERICAN MIDWEST POWER 1:30 SCALE

SALES APPROVAL INITIAL: DATE:

QUOTE# **36670** SALESPERSON: **MARK EIDEM**

JOB# ---- SHEET **1** OF **1**