

LEGEND:

	PROPERTY LINE
	PROP. EASEMENT LINE
	EX. EASEMENT LINE
	EX. WATER LINE
	EX. SANITARY LINE
	EX. STORM SEWER
	EX. COMMUNICATION LINE
	EX. ELECTRIC LINE
	EX. GAS LINE
	PROP. WATER LINE
	PROP. SANITARY LINE
	PROP. STORM SEWER
	PROP. COMMUNICATIONS LINE
	PROP. ELECTRIC LINE
	PROP. GAS LINE
	PROP. RETAINING WALL
	PROP. SITE LIGHT

GENERAL NOTES:

1. ALL EXISTING UTILITIES ARE TO REMAIN UNLESS OTHERWISE NOTED.
2. LIGHT POLES SHALL BE SETBACK AT LEAST 18" FROM TOP BACK OF CURB ADJACENT TO HEAD IN PARKING STALLS.
3. CONTRACTOR VIDEO EXISTING SANITARY SEWER FROM END OF EXISTING STUB TO EXISTING MAIN TO VERIFY CONDITION PRIOR TO CONNECTION.

CAUTION NOTES:

1. CONTRACTOR TO VERIFY TIE IN LOCATIONS TO EXISTING UTILITIES.
2. CONTRACTOR TO MAINTAIN AT LEAST 18" OF VERTICAL SEPARATION BETWEEN UTILITIES.

ALL FIRE HYDRANTS SHALL BE INSTALLED ACCORDING TO WATER UTILITY STANDARDS. THE NUMBER AND LOCATIONS OF THE FIRE HYDRANTS AS SHOWN ON THE OVERALL UTILITY PLAN ARE CORRECT AS SPECIFIED BY THE TOWN OF PARKER, COMMUNITY DEVELOPMENT DEPARTMENT.

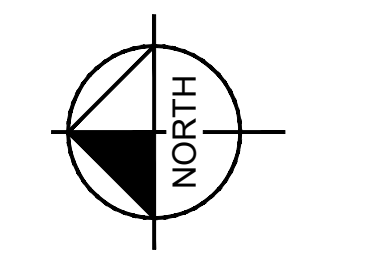
FIRE CODE OFFICIAL OR DESIGNATED REPRESENTATIVE DATE

(NOTE - UNDERGROUND FIRE LINE (UFL) SUBMITTAL DOCUMENTS MUST MEET THE REQUIREMENTS OF NFPA 24 WHEN SUBMITTING FOR REVIEW.)

THE TOWN OF PARKER REVIEW CONSTITUTES GENERAL COMPLIANCE WITH THE TOWN'S STANDARDS AND APPROVED VARIANCES, SUBJECT TO THESE PLANS BEING STAMPED, SIGNED, AND DATED BY THE PROFESSIONAL ENGINEER OF RECORD. REVIEW BY THE TOWN DOES NOT CONSTITUTE APPROVAL OF THE PLAN DESIGN OR ACCURACY AND CORRECTNESS OF ENGINEERING CALCULATIONS. ERRORS IN THE DESIGN OR CALCULATIONS REMAIN THE RESPONSIBILITY OF REGISTERED PROFESSIONAL ENGINEER WHOSE STAMP AND SIGNATURE ARE AFFIXED TO THIS DOCUMENT.

THIS REVIEW DOES NOT CONSTITUTE APPROVAL OF ANY PRIVATE ON-SITE IMPROVEMENTS WHICH MAY BE SHOWN. CONSTRUCTION CANNOT COMMENCE UNTIL ALL REQUIRED DRAINAGE/TRAFFIC REPORT(S), FINAL DEVELOPMENT PLAN(S), SPECIAL REVIEW(S), GRADING PERMIT, AND/OR OTHER PERMITS ARE COMPLETE, APPROVED AND ON FILE WITH THE TOWN OF PARKER.

TOWN OF PARKER, DIRECTOR OF ENGINEERING DATE



TITLE	UTILITY PLANS	DATE	
DESCRIPTION	UTILITY PLAN	REV	DATE
SITE ADDRESS	NEAR SEC PARKER ROAD AND STROH ROAD, PARKER CO	REV	DATE
SITE ID	51032	REV	DATE
DESCRIPTION		REV	DATE

McDonald's USA, LLC

These drawings and specifications are the confidential and proprietary property of McDonald's USA, LLC and shall not be copied or reproduced without written authorization. The contract documents were prepared and used for use on a different site or at a later time. Use of these drawings for reference or example on another project requires the contract documents for reuse on another project is not authorized.

PREPARED BY: **Kimley»Horn**

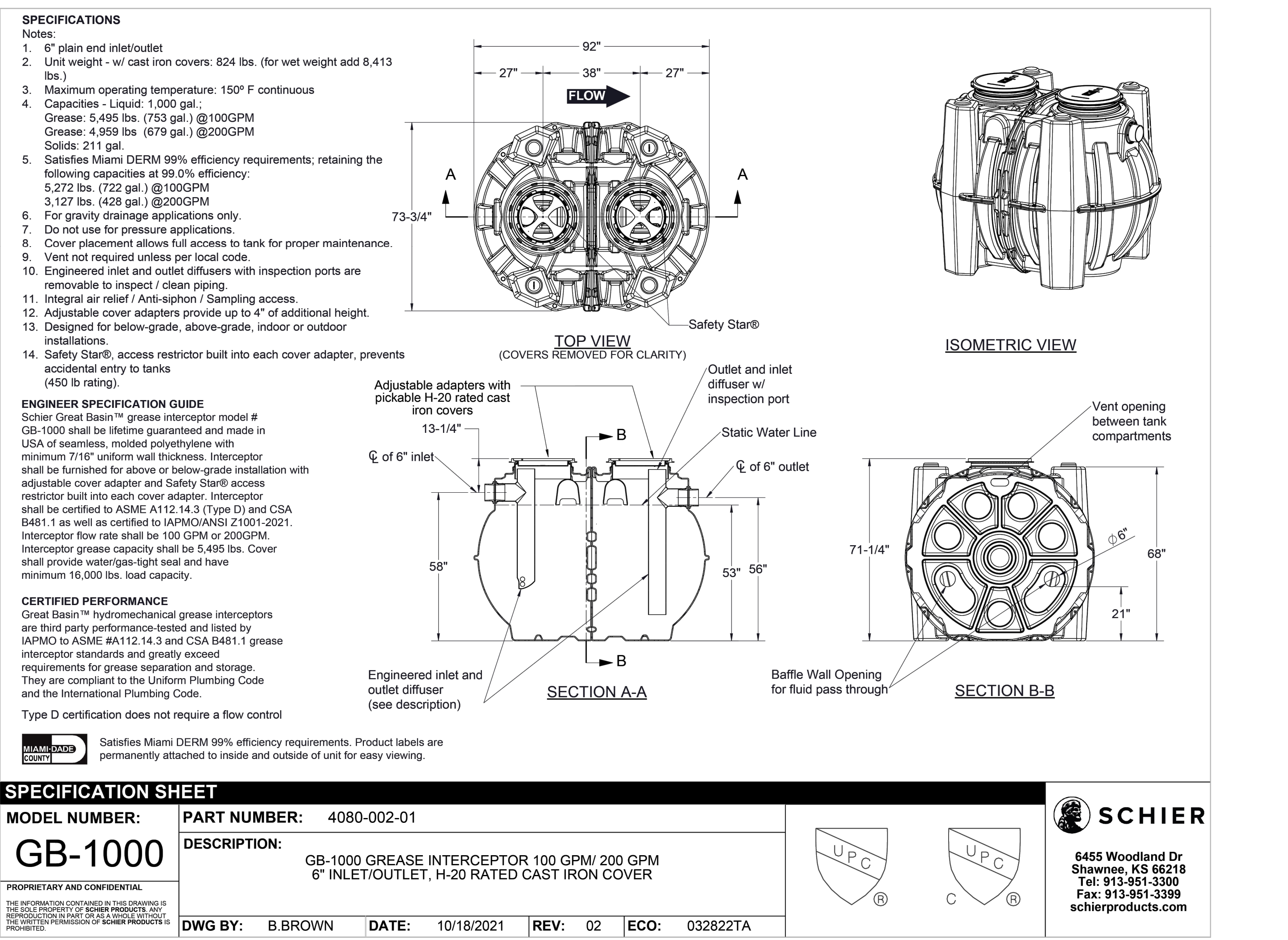
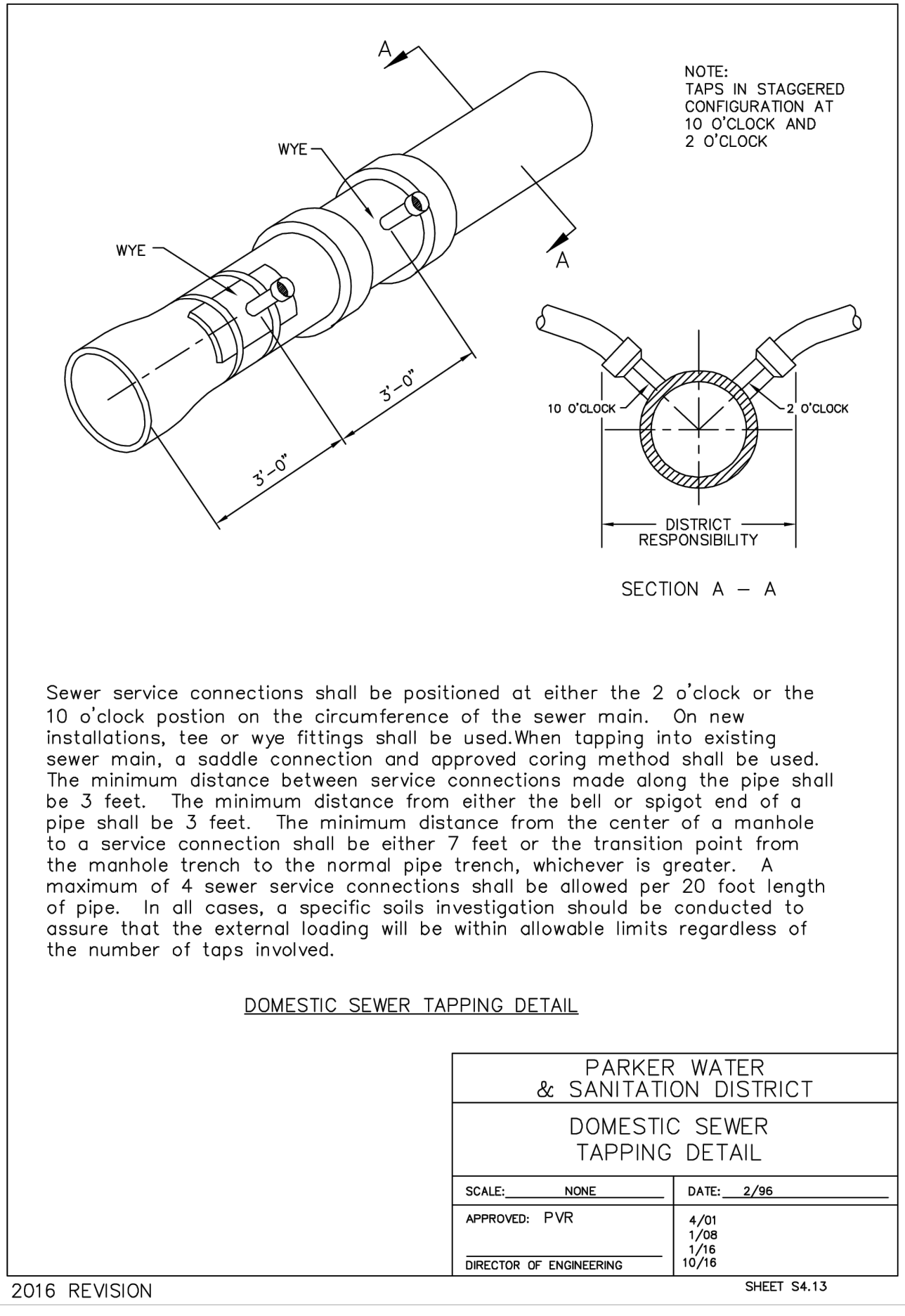
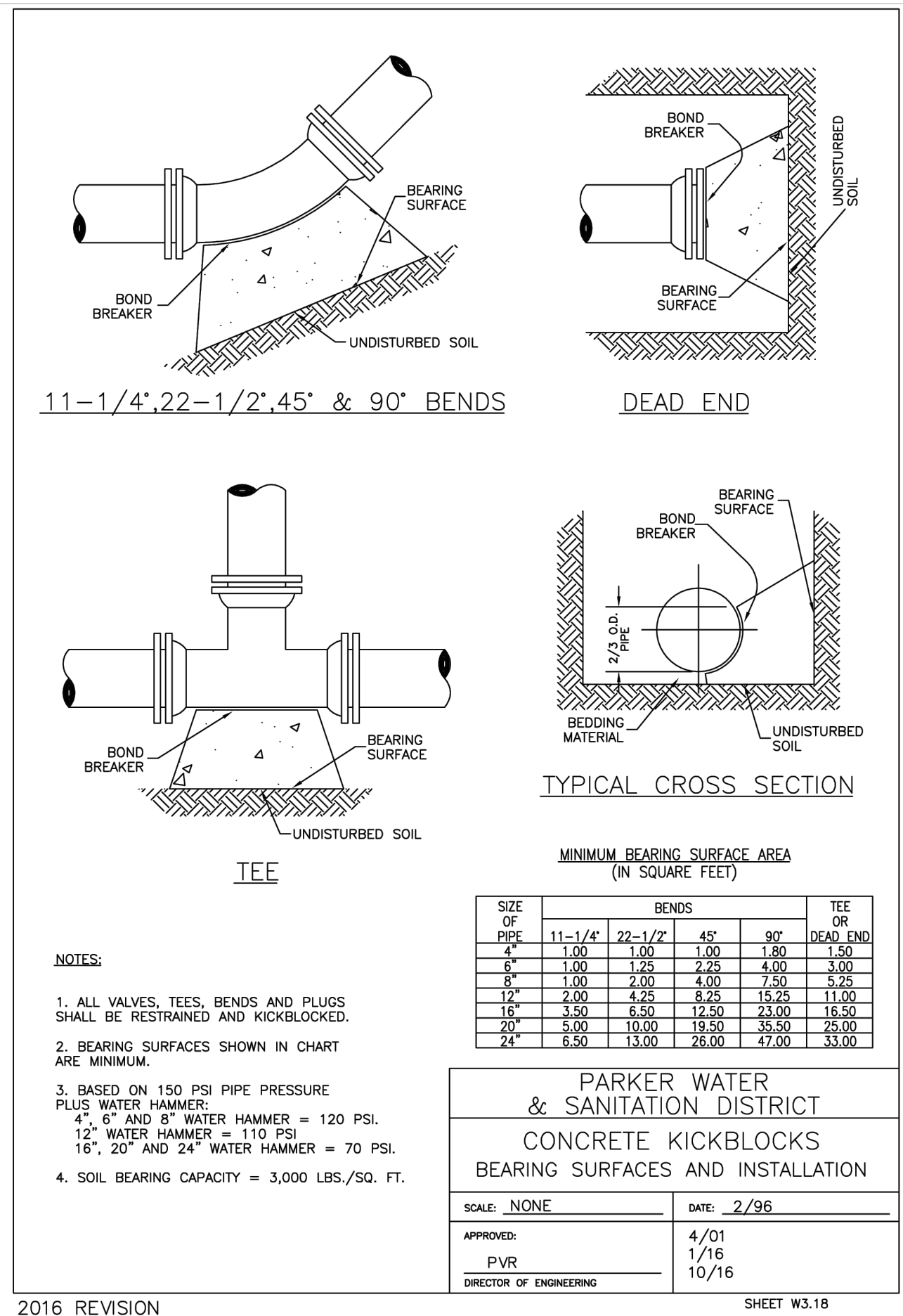
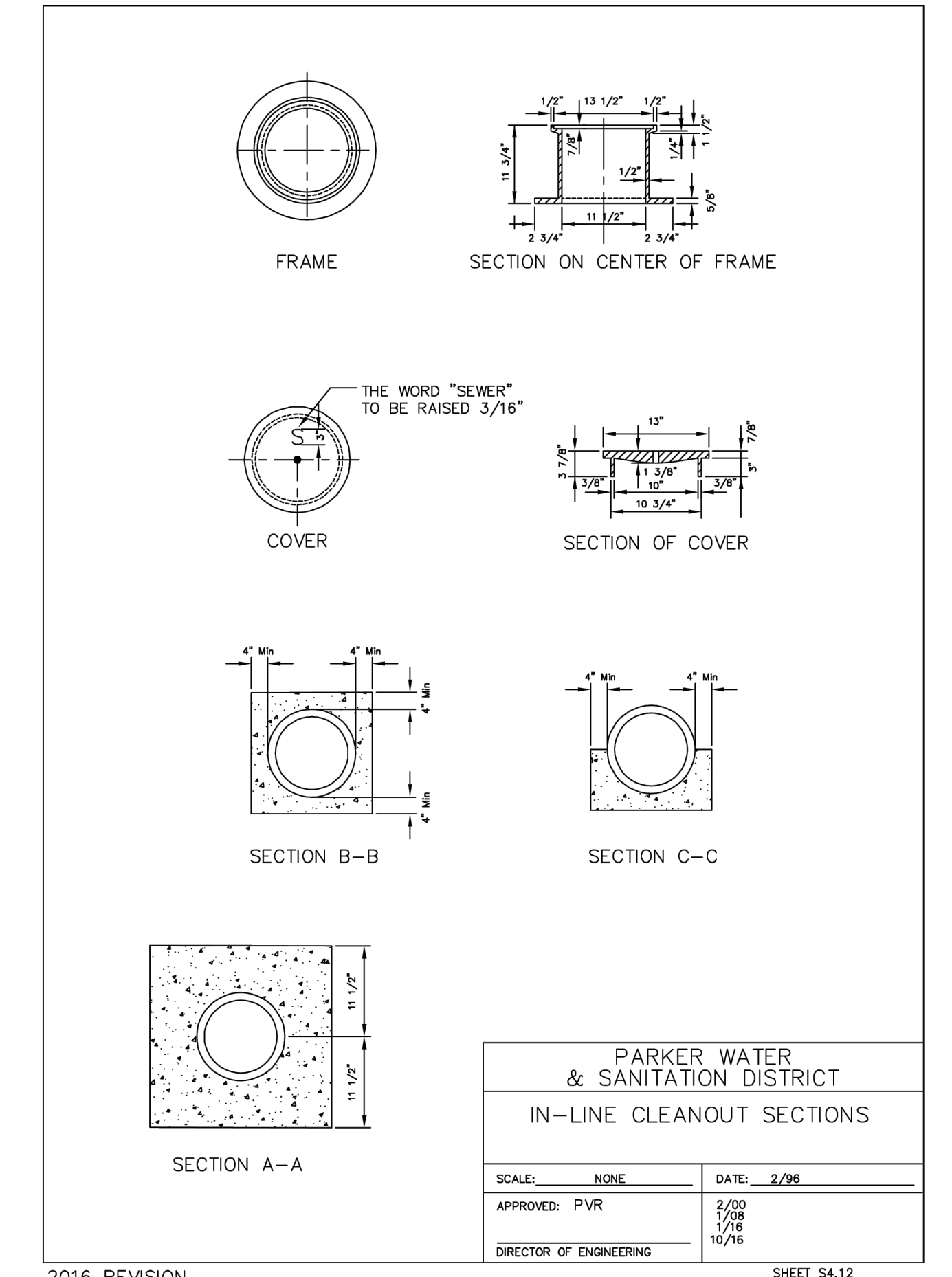
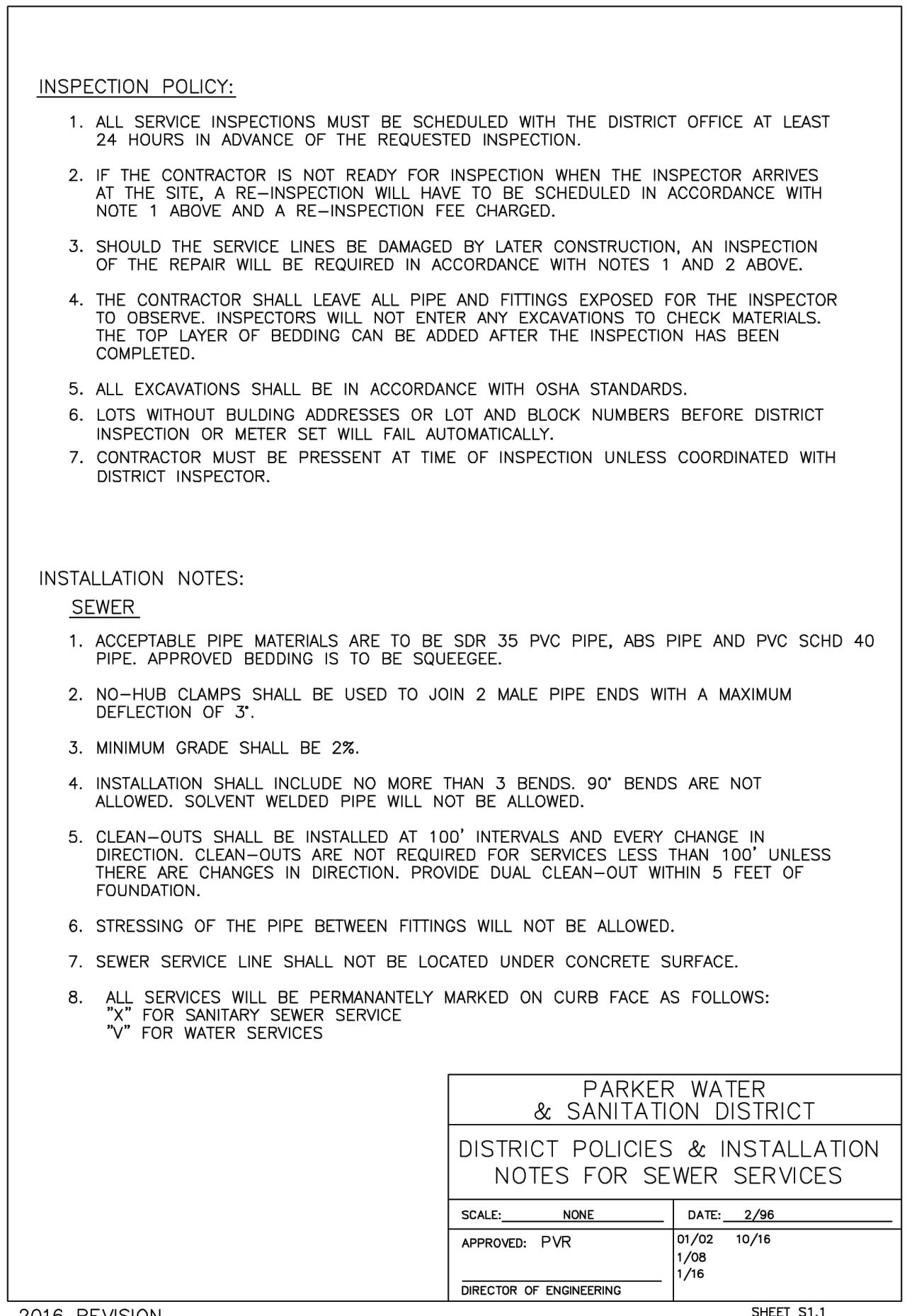
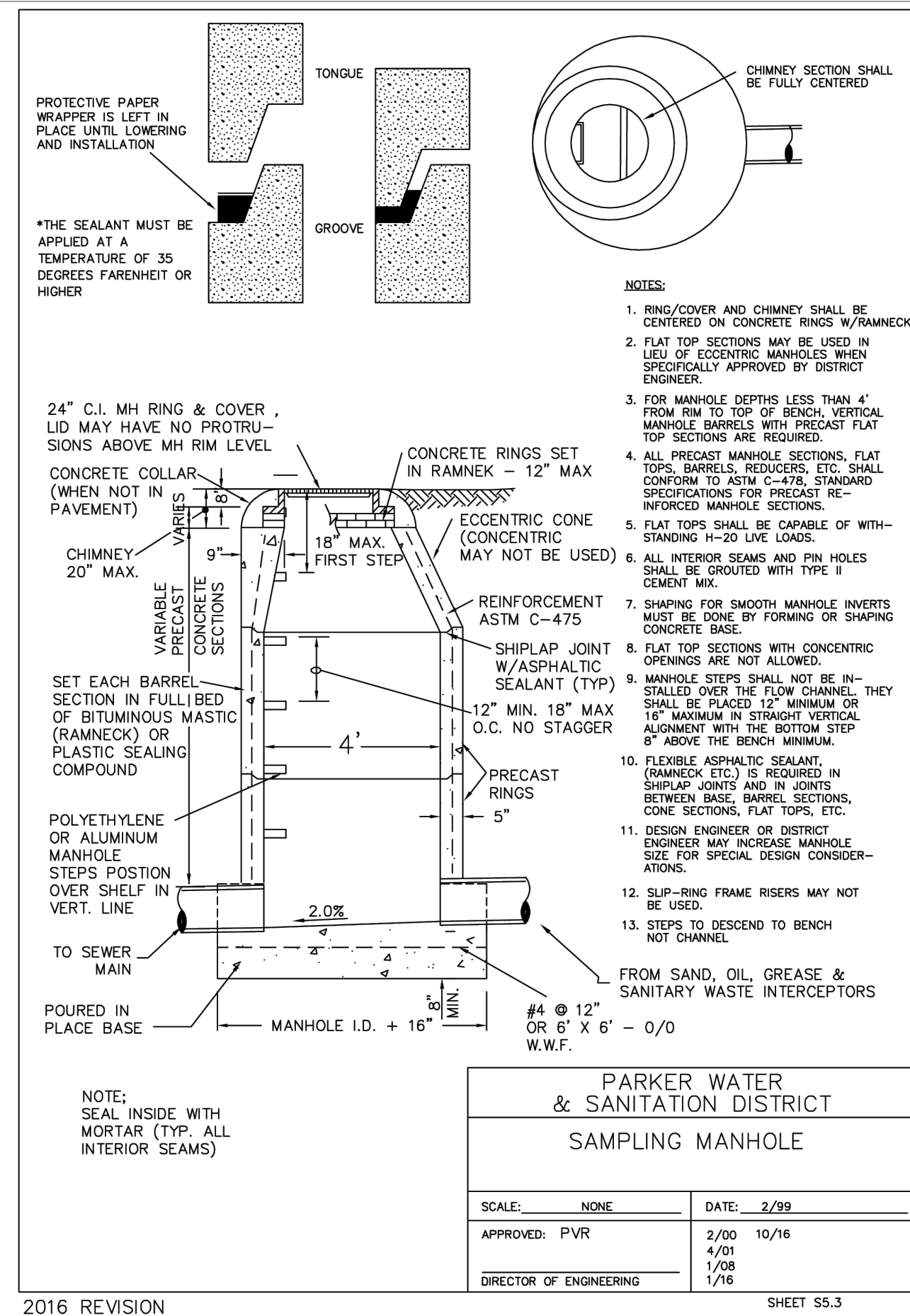
PROFESSIONAL ENGINEER

59054

09/26/2024

COLORADO LICENSED





SPECIFICATION SHEET

MODEL NUMBER: GB-1000 **PART NUMBER:** 4080-002-01

DESCRIPTION: GB-1000 GREASE INTERCEPTOR 100 GPM / 200 GPM 6" INLET/OUTLET, H-20 RATED CAST IRON COVER

DWG BY: B.BROWN **DATE:** 10/18/2021 **REV:** 02 **ECO:** 032822TA

SCHIER

6455 Woodland Dr
Shawnee, KS 66218
Tel: 913-951-3300
Fax: 913-951-3399
schierproducts.com

UPC

Kimley»Horn

COLORADO LICENSED PROFESSIONAL ENGINEER

McDonald's USA, LLC

These drawings and specifications are the confidential and proprietary property of McDonald's USA, LLC and shall not be copied or reproduced without written authorization. The contract documents were prepared not suitable for use on a different site or at a later time. Use of these drawings for reference or example on another project requires the contract documents for reuse on another project is not authorized.

UTILITY PLANS

PWSD DETAILS

811 Know what's below. Call before you dig.

C2.4