







**INSPECTION POLICY:**

1. ALL SERVICE INSPECTIONS MUST BE SCHEDULED AT LEAST 24 HOURS IN ADVANCE OF THE REQUESTED INSPECTION.
2. SERVICE INSPECTIONS WILL OCCUR BETWEEN 1:00 P.M. AND 3:00 P.M. SPECIFIC INSPECTION TIMES ARE NOT AVAILABLE.
3. IF THE CONTRACTOR IS NOT READY FOR INSPECTION WHEN THE INSPECTOR ARRIVES AT THE SITE OR SERVICE FAILS, A RE-INSPECTION WILL HAVE TO BE SCHEDULED IN ACCORDANCE WITH NOTES 1 AND 2 ABOVE AND A RE-INSPECTION FEE CHARGED.
4. SHOULD THE SERVICE LINES BE DAMAGED BY LATER CONSTRUCTION, AN INSPECTION OF THE REPAIR WILL BE REQUIRED IN ACCORDANCE WITH NOTES 1 AND 2 ABOVE.
5. THE CONTRACTOR SHALL LEAVE ALL PIPE AND FITTINGS EXPOSED FOR THE INSPECTOR TO OBSERVE. INSPECTORS WILL NOT ENTER ANY EXCAVATIONS TO CHECK MATERIALS. THE TOP LAYER OF BEDDING CAN BE ADDED AFTER THE INSPECTION HAS BEEN COMPLETED.
6. ALL EXCAVATIONS SHALL BE IN ACCORDANCE WITH OSHA STANDARDS.
7. LOTS WITHOUT BUILDING ADDRESSES BEFORE DISTRICT INSPECTION OR METER SET WILL FAIL AUTOMATICALLY.
8. CONTRACTOR MUST BE PRESENT AT TIME OF INSPECTION. UNLESS COORDINATED WITH DISTRICT INSPECTOR.

**INSTALLATION NOTES:**

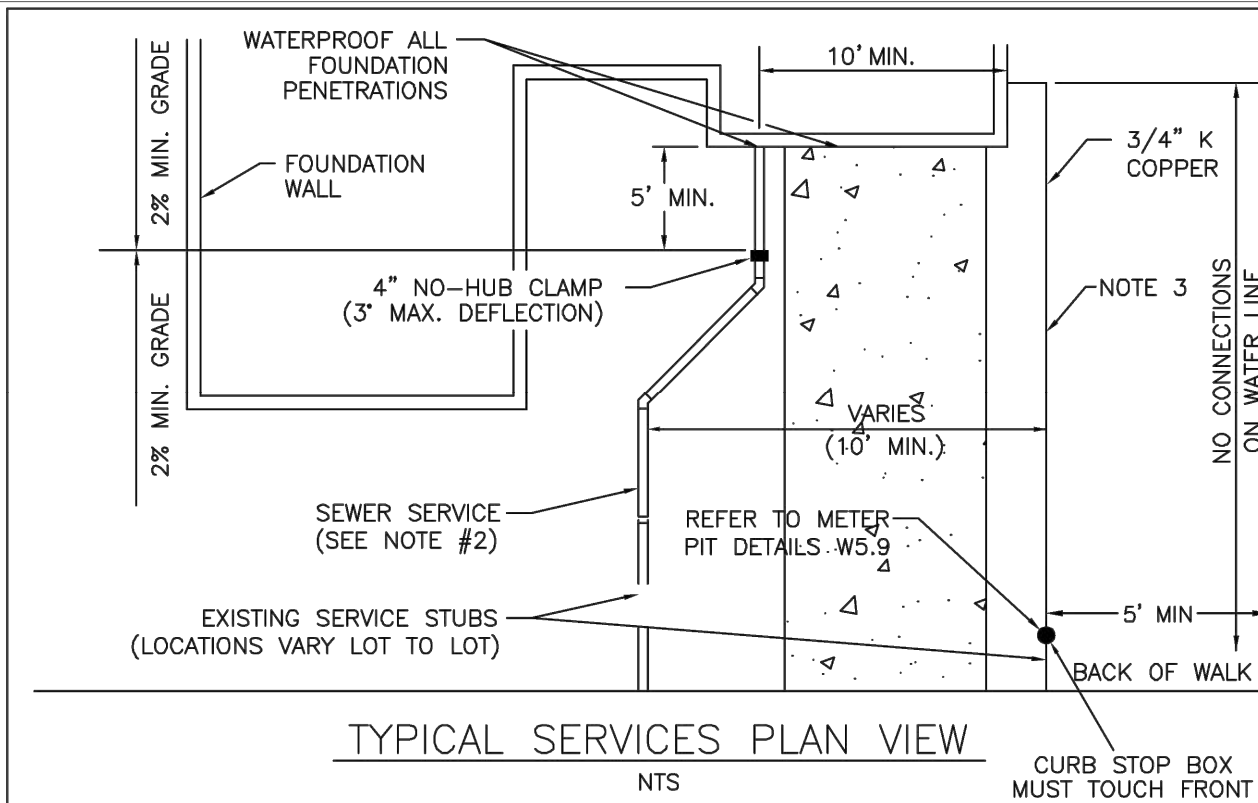
- WATER**
1. ACCEPTABLE PIPE MATERIALS SHALL BE K-COPPER TUBING. (3/4" MIN.)
  2. APPROVED BEDDING TO BE SQUEEGEE.
  3. ONLY ONE COUPLING WILL BE ALLOWED BETWEEN THE STUB-IN AND BUILDING. COMPRESSION COUPLINGS WILL NOT BE ALLOWED ON NEW CONSTRUCTION. SILVER SOLDERED JOINTS MUST BE USED ON SERVICES LARGER THAN 3/4". SILVER SOLDERED JOINTS MUST BE INSPECTED BY PWSO PRIOR TO BURIAL. FLARED COUPLINGS WILL BE ALLOWED ON ALL SERVICES 3/4" AND SMALLER.
  4. A WATER SERVICE WHICH CROSSES A SEWER SERVICE CAN DO SO ONLY AT A 45-90° ANGLE. WATER SERVICES SHALL BE LOCATED A MINIMUM OF 18" ABOVE SEWER SERVICE.
  5. WATER SERVICE FOUNDATION PENETRATIONS SHALL BE WATERPROOFED USING MASTIC OR OTHER APPROVED METHOD. CRAWL SPACE REQUIRES CONTINUOUS COPPER WITH A 1" BURY.
  6. CURB STOP MUST BE PLUMB AND CENTERED OVER THE NUT. IT SHOULD BE STRAPPED TO THE METER PIT (RESIDENTIAL INSTALLATIONS) OR CENTERED OVER THE EASEMENT LINE (COMMERCIAL INSTALLATIONS). THE ASSEMBLY MUST BE AT OR SLIGHTLY ABOVE FINISHED GRADE.
  7. MOVED CURB BOXES MUST BE INSPECTED BY PWSO PRIOR TO BURIAL.
  8. WATERLINE MUST BE ATTACHED TO A SUPPORT BOARD THAT IS MOUNTED TO THE WALL.
  9. NO VOIDS ALLOWED UNDER WATERLINES FROM STOP BOX TO FOUNDATION.
  10. CURBSTOP BOXES AND METER PITS CANNOT BE IN DRIVEWAYS.
  11. ONLY 3/4" (JUMPER) PIPES (RESIDENCES) ARE ALLOWED. (JUMPER) PIPES WILL BE REMOVED PRIOR TO METER SET DATE.
  12. ALL SERVICES WILL BE PERMANENTLY MARKED ON CURB FACE AS FOLLOWS:  
"X" FOR SANITARY SEWER SERVICE  
"Y" FOR WATER SERVICES
  13. NO SPLICES OR FLARED COUPLINGS ALLOWED ON SERVICES LARGER THAN 3/4". SILVER SOLDERED JOINTS MUST BE USED IN MOVING STOPBOXES ON SERVICES LARGER THAN 3/4". SILVER SOLDERED JOINTS MUST BE INSPECTED BY PWSO PRIOR TO BURIAL. FLARED COUPLINGS WILL BE ALLOWED ON ALL SERVICES 3/4" AND SMALLER.

**PARKER WATER & SANITATION DISTRICT**  
DISTRICT POLICIES & INSTALLATION NOTES FOR WATER SERVICES

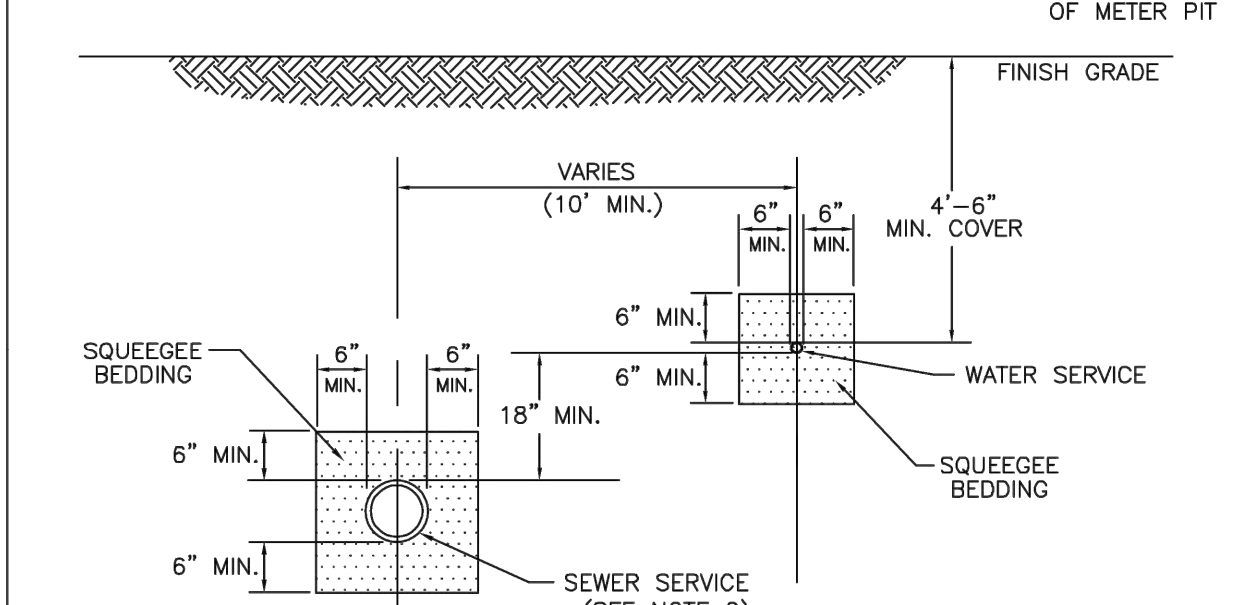
SCALE: NONE	DATE: 2/96
APPROVED: PVR	1/04 1/16 12/07 1/16
DIRECTOR OF ENGINEERING	

2016 REVISION

SHEET W1.1



TYPICAL SERVICES PLAN VIEW



TYPICAL SERVICES SECTION

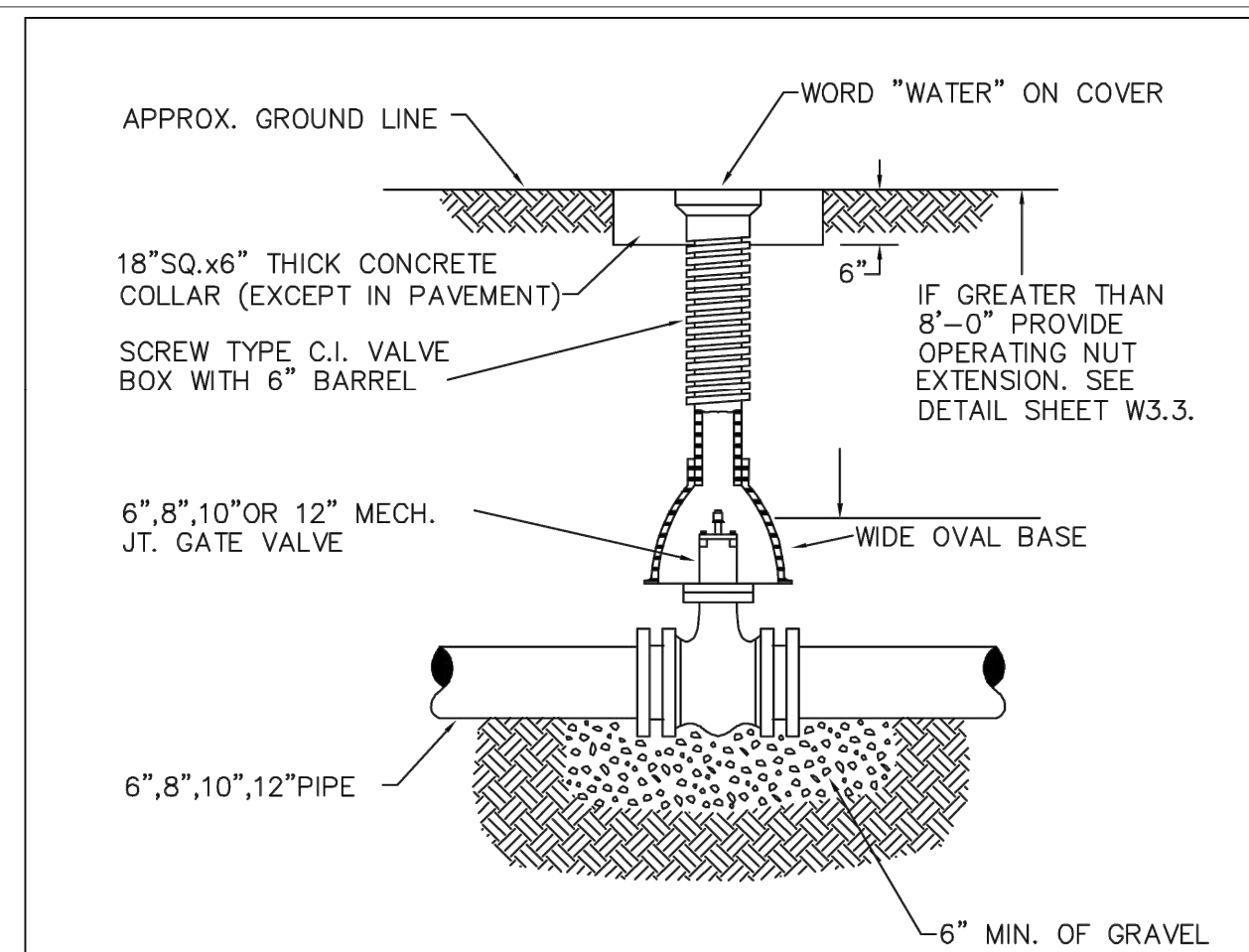
- NOTE:**
1. SEE SHEET W1.1 FOR DISTRICT POLICIES AND INSTALLATION NOTES.
  2. REFER TO SEWER SERVICES DETAIL SHEET S1.2.
  3. 4" PVC SLEEVES REQUIRED FOR SERVICE LINES UNDER CONCRETE SURFACE.

**PARKER WATER & SANITATION DISTRICT**  
TYPICAL WATER SERVICES

SCALE: NONE	DATE: 2/96
APPROVED: PVR	1/04 10/16 06/05 12/07 1/16
DIRECTOR OF ENGINEERING	

2016 REVISION

SHEET W1.2



6-INCH VALVE BOXES  
CHECK MATERIAL SPECIFICATIONS

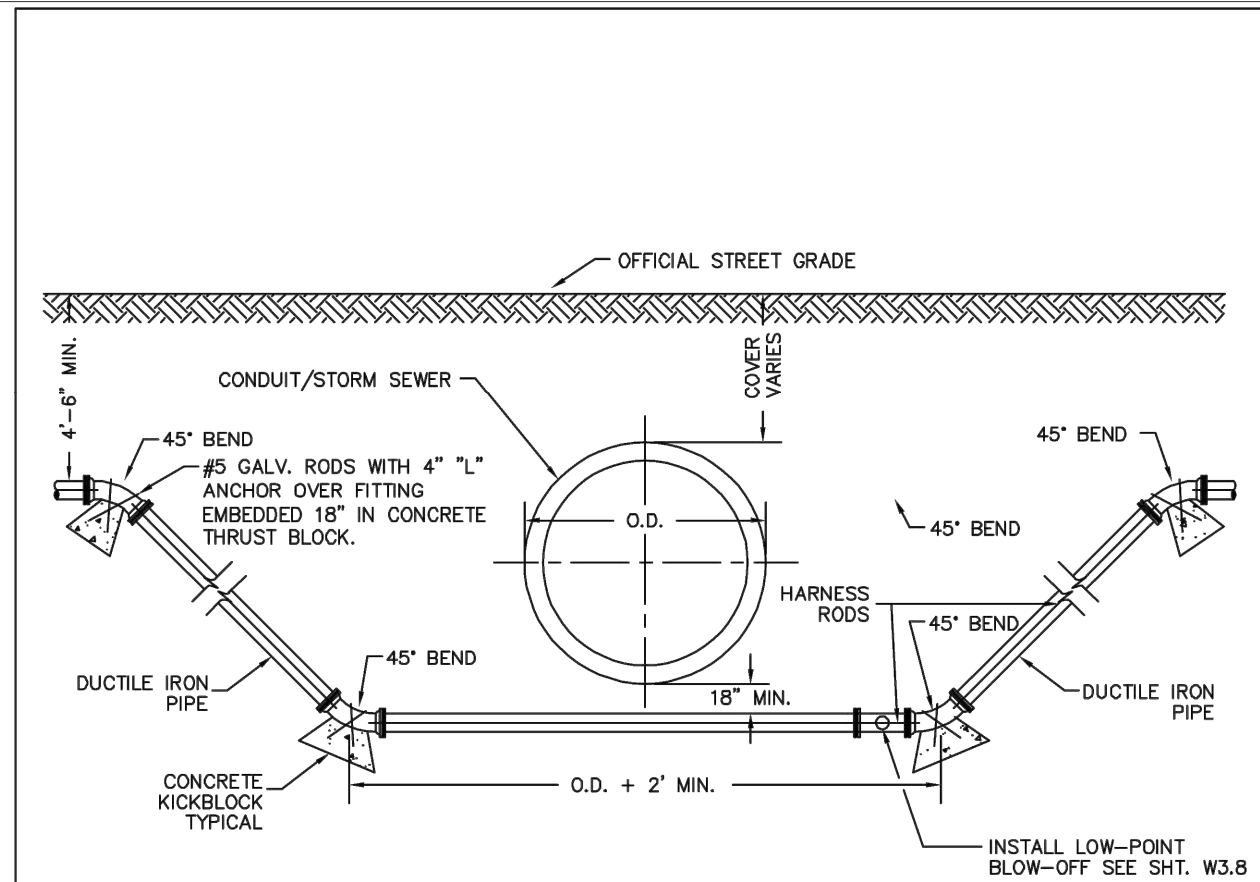
- NOTES:**
1. ALL C.I. SHALL BE WRAPPED WITH 8 MIL. MIN. THICKNESS POLYETHYLENE.
  2. VALVE NUT SHALL BE CENTERED.
  3. VALVE BOX SHALL BE PLUMB.
  4. SEE MATERIAL SPECIFICATIONS FOR VALVE BOX WITH GREATER THAN BURIED DEPTH OF 4.5 FT.

**PARKER WATER & SANITATION DISTRICT**  
VALVE BOX DETAIL

SCALE: NONE	DATE: 2/96
APPROVED: PVR	5/98 10/16 6/99 12/07 1/16
DIRECTOR OF ENGINEERING	

2016 REVISION

SHEET W3.10



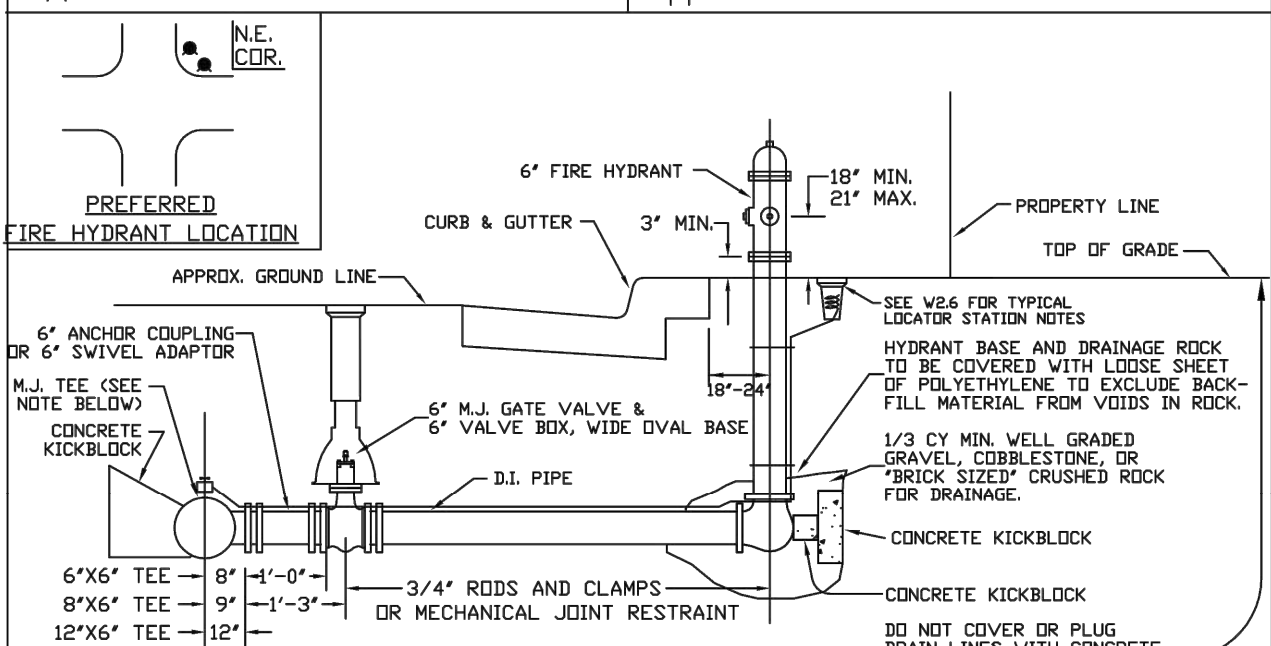
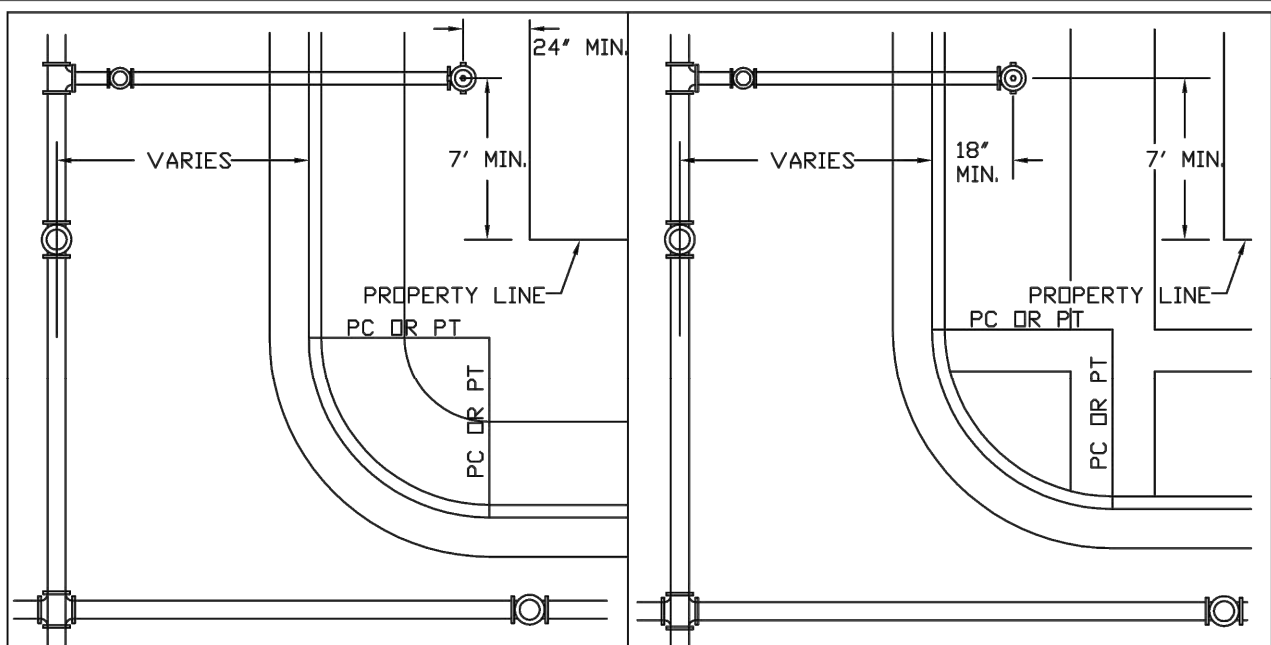
- NOTES:**
1. LENGTH OF EXTENSION OF PIPE AND HARNESS RODS SHALL BE IN ACCORDANCE WITH THESE ENGINEERING STANDARDS.
  2. ALL WATER MAINS TWELVE (12") INCHES OR SMALLER, WHICH CROSS UNDER CONDUITS/STORM SEWER SHALL BE DUCTILE IRON OR PVC PER SPECIFICATIONS.
  3. A BORED CROSSING MAY BE REQUIRED BY THE ENGINEER.
  4. CONCRETE KICKBLOCKS PER SHEET W3.18.

**PARKER WATER & SANITATION DISTRICT**  
CONDUIT OR STORM SEWER CROSSING

SCALE: NONE	DATE: 2/96
APPROVED: PVR	5/98 10/16 2/00 12/07 1/16
DIRECTOR OF ENGINEERING	

2016 REVISION

SHEET W4.6

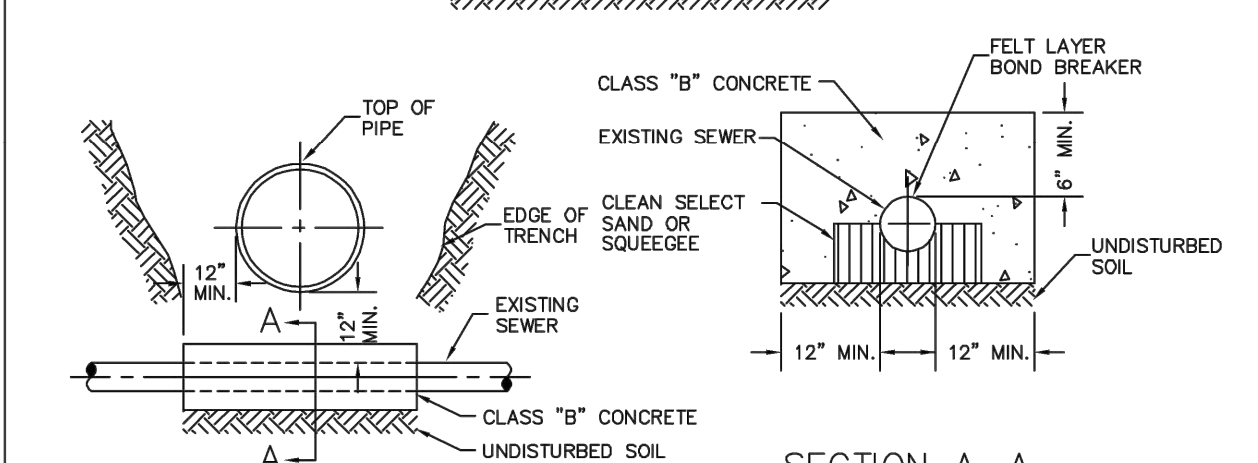
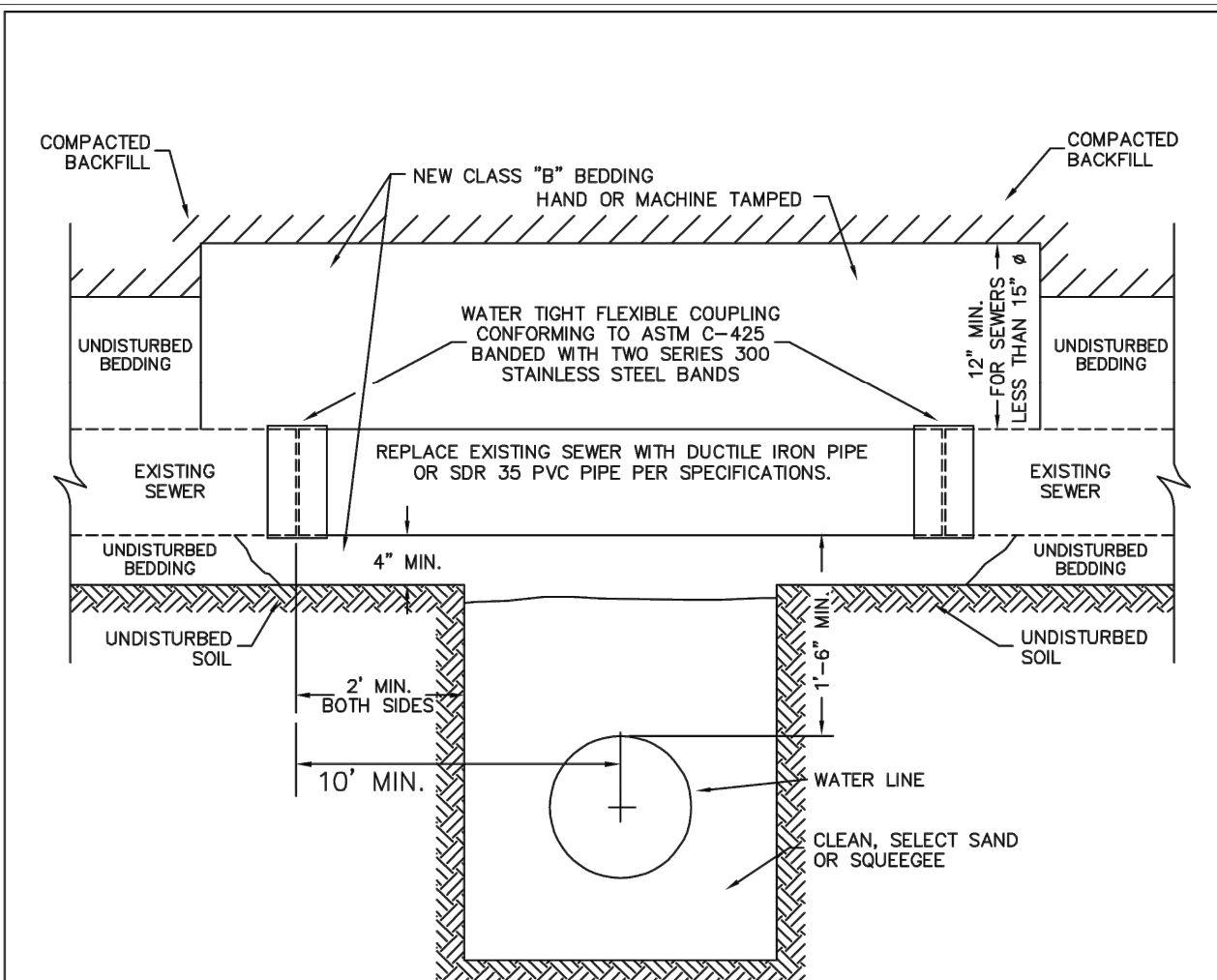


**PARKER WATER & SANITATION DISTRICT**  
FIRE HYDRANTS LOCATION & INSTALLATION

SCALE: NONE	DATE: 2/96
APPROVED: PVR	4/01 10/16 01/02 12/07 1/16
DIRECTOR OF ENGINEERING	

2016 REVISION

SHEET W2.5

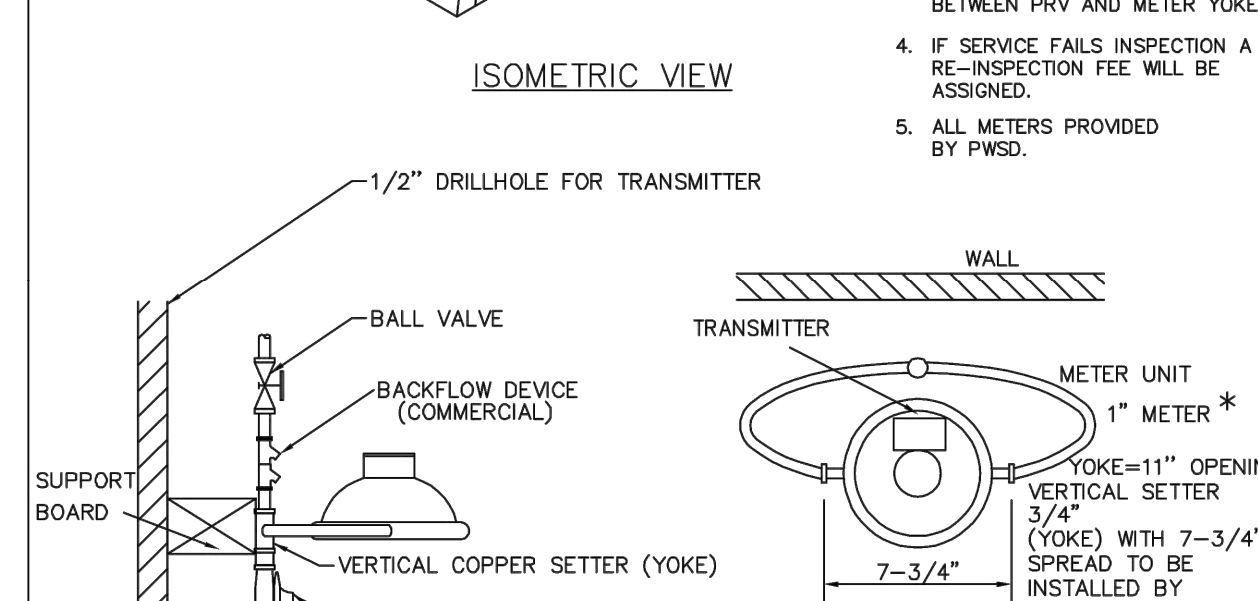
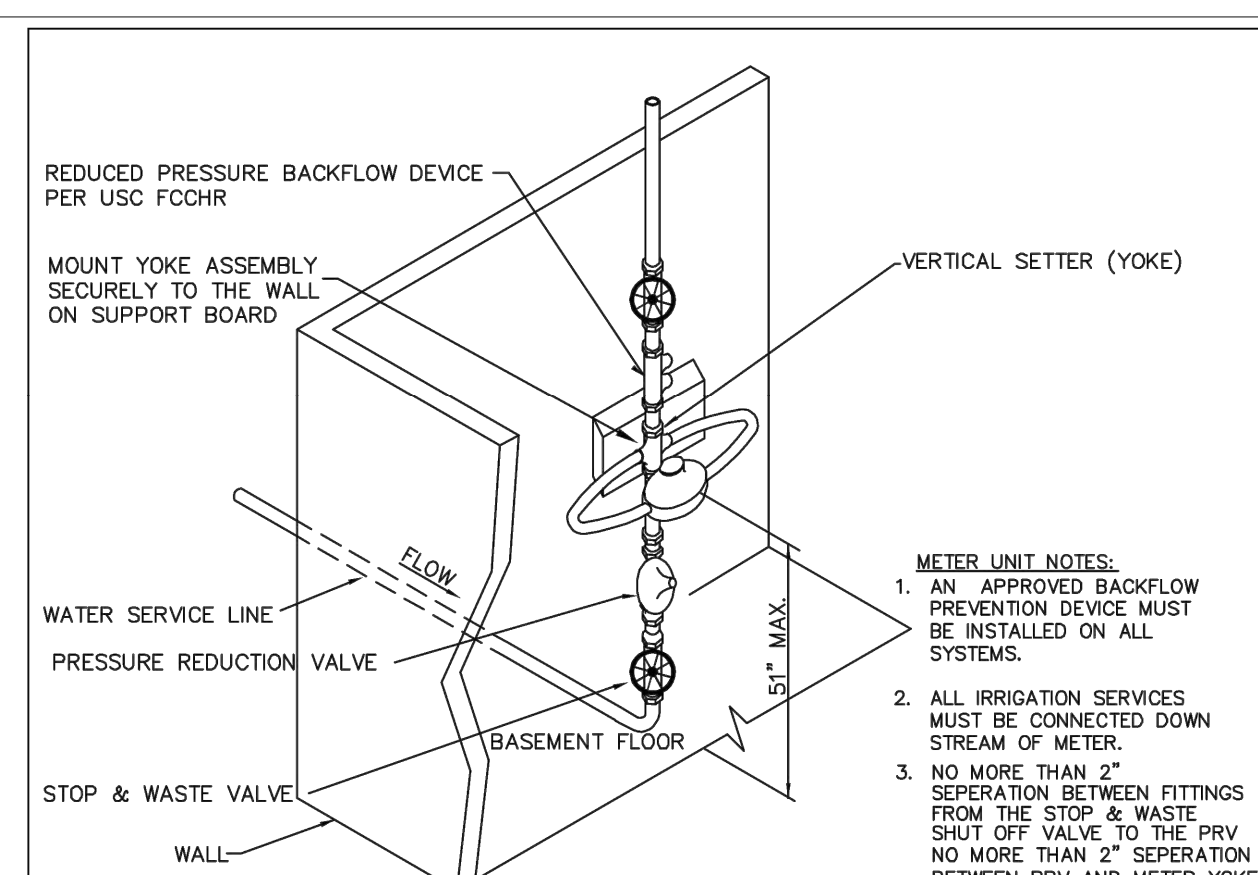


**PARKER WATER & SANITATION DISTRICT**  
CROSSING STORM & SANITARY SEWERS

SCALE: NONE	DATE: 2/96
APPROVED: PVR	1/16 10/16
DIRECTOR OF ENGINEERING	

2016 REVISION

SHEET W4.7

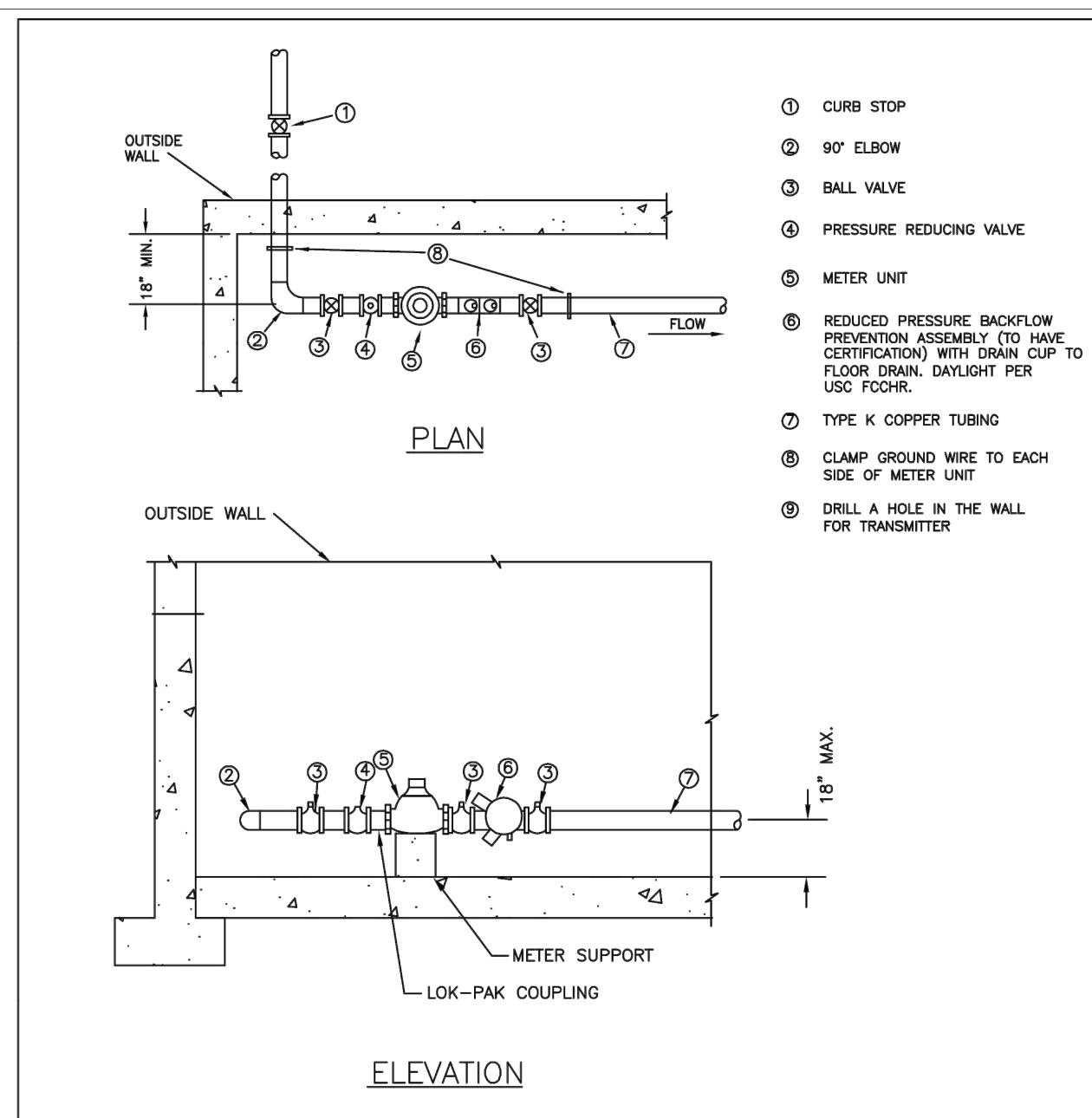


**PARKER WATER & SANITATION DISTRICT**  
SERVICE LINE, STOP BOX & INSIDE METER SETTING (COMMERCIAL ONLY)

SCALE: NONE	DATE: 2/96
APPROVED: PVR	8/99 01/02 01/16 01/04 06/05 10/16 06/05 1/16
DIRECTOR OF ENGINEERING	

2016 REVISION

SHEET W5.9



**PARKER WATER & SANITATION DISTRICT**  
INSIDE SETTING FOR 1 1/2\"/>

SCALE: NONE	DATE: 2/96
APPROVED: PVR	8/99 01/02 01/16 2/00 06/05 10/16 4/01 07/06
DIRECTOR OF ENGINEERING	

2016 REVISION

SHEET W5.14

**Kimley»Horn**

**PRELIMINARY**  
FOR REVIEW ONLY  
NOT FOR CONSTRUCTION  
**Kimley»Horn**  
Kimley-Horn and Associates, Inc.

**McDonald's USA, LLC**  
These drawings and specifications are the confidential and proprietary property of McDonald's USA, LLC and shall not be copied or reproduced without written authorization. The contract documents were prepared not suitable for use on a different site or at a later time. Use of these drawings for reference or example on another project requires the contract documents for reuse on another project is not authorized.

PREPARED BY:	DATE:
DRAWN BY:	DATE:
STD. ISSUE DATE:	DATE:
REVIEWED BY:	DATE:
DATE ISSUED:	12/22/2023

**UTILITY PLANS**  
**PWSO DETAILS**

TITLE: NEAR SEC PARKER ROAD AND STROH ROAD, PARKER CO  
SITE ADDRESS: 51032  
DESCRIPTION: C2.3



