

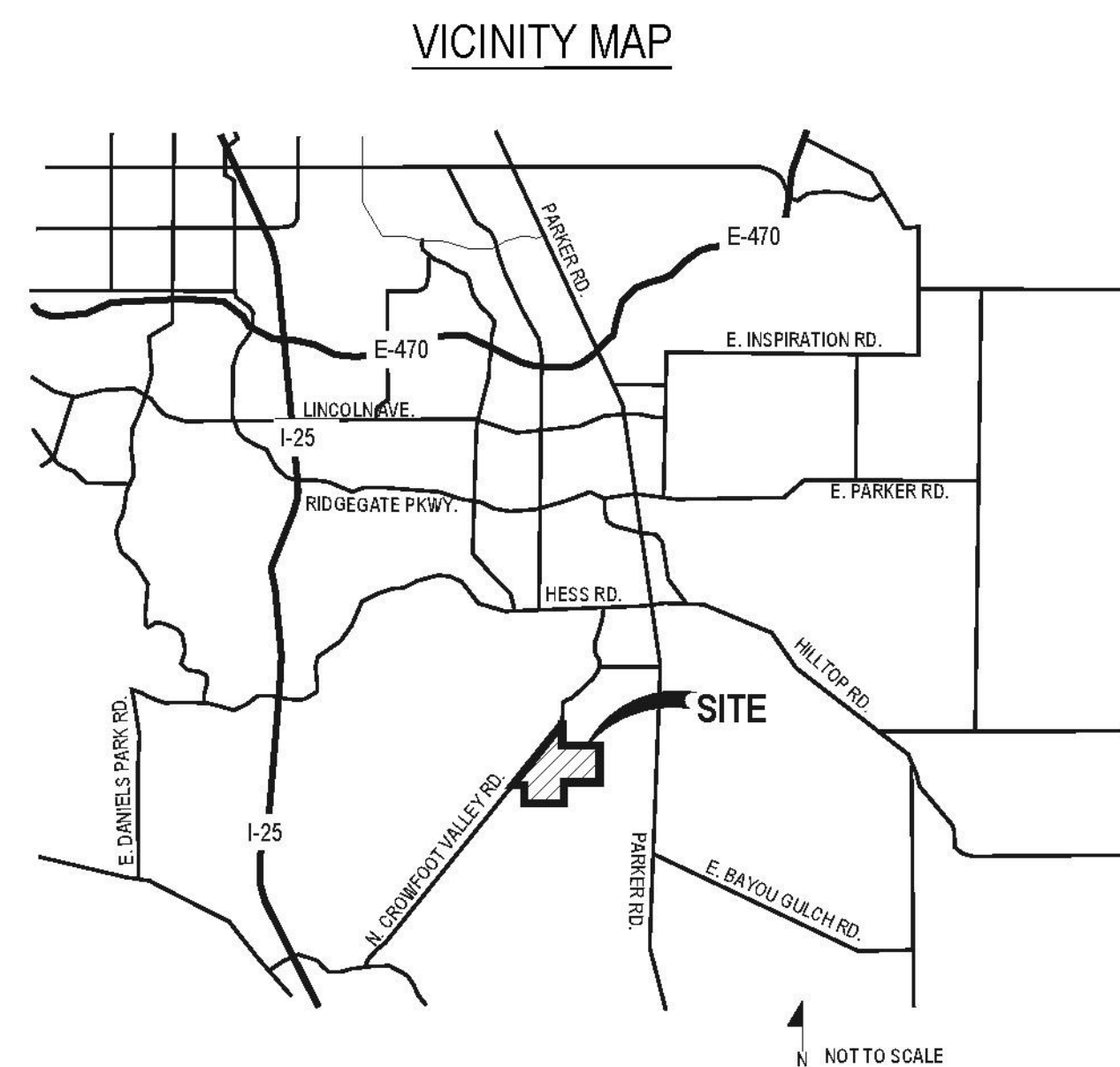
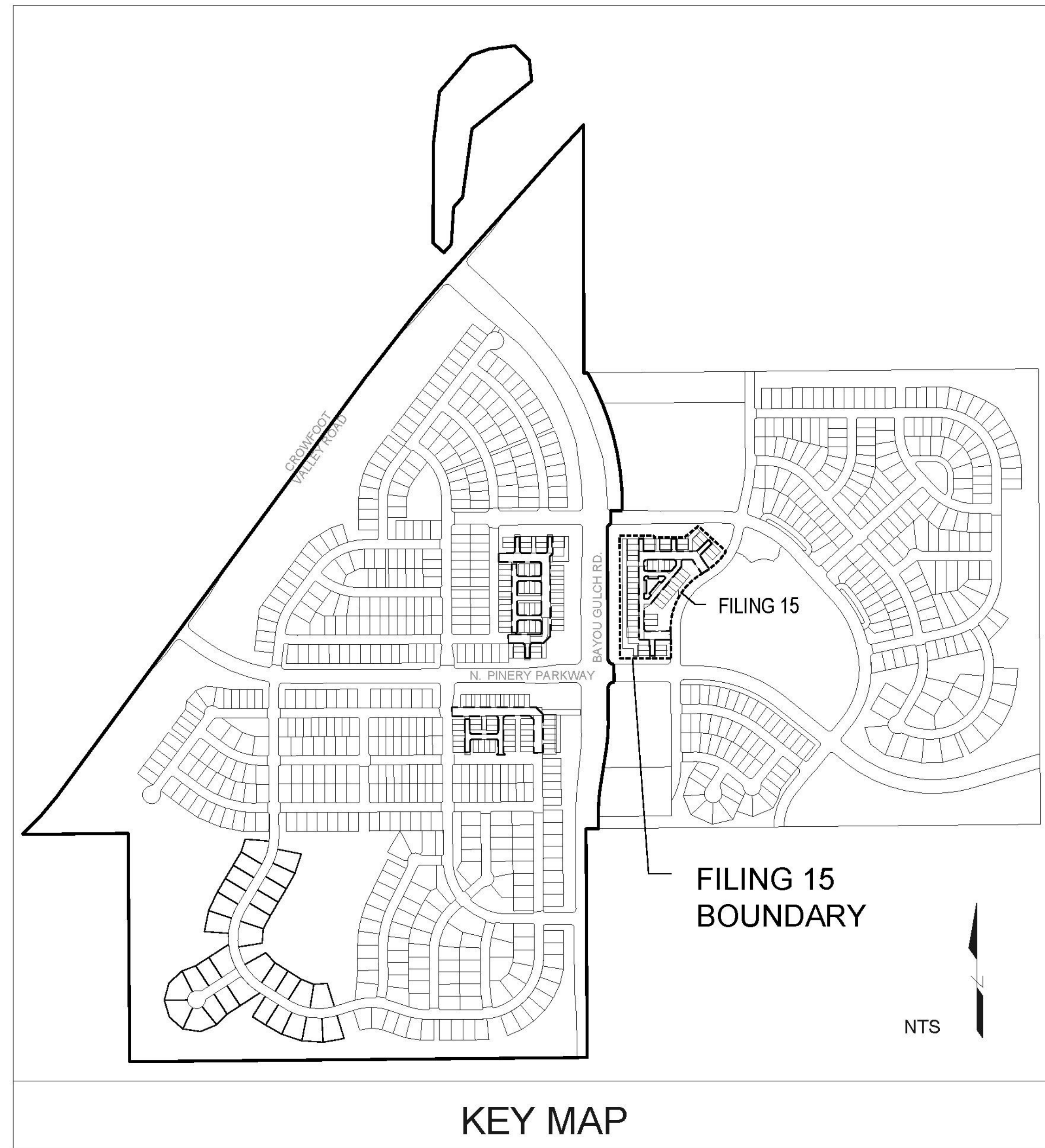
TRAILS AT CROWFOOT AMENDMENT NO.1

LANDSCAPE PLANS

FILING 15, MIXED USE

GENERAL NOTES

- DRAWINGS ARE INTENDED TO BE PRINTED ON 24 X 36 PAPER. PRINTING THESE DRAWINGS AT A DIFFERENT SIZE WILL IMPACT THE SCALE. VERIFY THE GRAPHIC SCALE BEFORE REFERENCING ANY MEASUREMENTS ON THESE SHEETS. THE RECIPIENT OF THESE DRAWINGS SHALL BE RESPONSIBLE FOR ANY ERRORS RESULTING FROM INCORRECT PRINTING, COPYING, OR ANY OTHER CHANGES THAT ALTER THE SCALE OF THE DRAWINGS.
- VERIFY ALL PLAN DIMENSIONS PRIOR TO START OF CONSTRUCTION. NOTIFY THE OWNER'S REPRESENTATIVE TO ADDRESS ANY QUESTIONS OR CLARIFY ANY DISCREPANCIES.
- WRITTEN DIMENSIONS TAKE PRECEDENCE OVER SCALED DIMENSIONS.
- SUBMIT A CHANGE ORDER FOR APPROVAL FOR ANY CHANGES TO WORK SCOPE RESULTING FROM FIELD CONDITIONS OR DIRECTION BY OWNER'S REPRESENTATIVE WHICH REQUIRE ADDITIONAL COST TO THE OWNER PRIOR TO PERFORMANCE OF WORK.
- THE CONTRACTOR SHALL PROVIDE A STAKED LAYOUT OF ALL SITE IMPROVEMENTS FOR INSPECTION BY THE OWNER'S REPRESENTATIVE AND MAKE MODIFICATIONS AS REQUIRED. ALL LAYOUT INFORMATION IS AVAILABLE IN DIGITAL FORMAT FOR USE BY THE CONTRACTOR.
- IF A GEOTECHNICAL SOILS REPORT IS NOT AVAILABLE AT THE TIME OF CONSTRUCTION, PCS GROUP, INC. RECOMMENDS A REPORT BE AUTHORIZED BY THE OWNER AND THAT ALL RECOMMENDATIONS OF THE REPORT ARE FOLLOWED DURING CONSTRUCTION.
- THE CONTRACTOR SHALL USE THESE CONTRACT DOCUMENTS AS A BASIS FOR THE BID. IF THE OWNER ELECTS TO PROVIDE A GEOTECHNICAL REPORT, THE CONTRACTOR SHALL REVIEW THE REPORT AND SUBMIT AN APPROPRIATE CHANGE ORDER TO THE OWNER'S REPRESENTATIVE IF ADDITIONAL COSTS ARE REQUESTED.
- CONTRACTOR SHALL CONFIRM THAT SITE CONDITIONS ARE SIMILAR TO THE PLANS WITHIN TOLERANCES STATED IN THE CONTRACT DOCUMENTS, AND SATISFACTORY TO THE CONTRACTOR PRIOR TO START OF WORK. SHOULD SITE CONDITIONS BE DIFFERENT THAN REPRESENTED ON THE PLANS OR UNSATISFACTORY TO THE CONTRACTOR, THE CONTRACTOR SHALL CONTACT THE OWNER'S REPRESENTATIVE FOR CLARIFICATION AND FURTHER DIRECTION.
- CONTRACTOR IS RESPONSIBLE TO PAY FOR, AND OBTAIN, ANY REQUIRED APPLICATIONS, PERMITTING, LICENSES, INSPECTIONS AND METERS ASSOCIATED WITH WORK.
- THE CONTRACTOR SHALL BE RESPONSIBLE FOR ANY FINES OR PENALTIES ASSESSED TO THE OWNER RELATING TO ANY VIOLATIONS OR NON-COMFORMANCE WITH THE PLANS, SPECIFICATIONS, CONTRACT DOCUMENTS, JURISDICTIONAL CODES AND REGULATORY AGENCIES.
- THE CONTRACTOR SHALL BE RESPONSIBLE FOR COORDINATION OF ALL UTILITY LOCATES PRIOR TO ANY EXCAVATION. NOTIFY OWNER'S REPRESENTATIVE IF EXISTING OR PROPOSED UTILITIES INTERFERE WITH THE ABILITY TO PERFORM WORK.
- UNLESS IDENTIFIED ON THE PLANS FOR DEMOLITION OR REMOVAL, THE CONTRACTOR IS RESPONSIBLE FOR THE COST TO REPAIR UTILITIES, ADJACENT OR EXISTING LANDSCAPE, ADJACENT OR EXISTING PAVING, OR ANY PUBLIC AND PRIVATE PROPERTY THAT IS DAMAGED BY THE CONTRACTOR OR THEIR SUBCONTRACTOR'S OPERATIONS DURING INSTALLATION, ESTABLISHMENT OR DURING THE SPECIFIED MAINTENANCE PERIOD. ALL DAMAGES SHALL BE REPAIRED TO PRE-CONSTRUCTION CONDITIONS AS DETERMINED BY THE OWNER'S REPRESENTATIVE. CONTRACTOR SHALL BE RESPONSIBLE FOR LOGGING ANY DAMAGES PRIOR TO START OF CONSTRUCTION AND DURING THE CONTRACT PERIOD.
- ANY AREAS OR IMPROVEMENTS DISTURBED OUTSIDE WORK AREA LIMITS SHALL BE RETURNED TO THEIR ORIGINAL CONDITION AT THE CONTRACTOR'S EXPENSE. IN THE EVENT THE CONTRACTOR REQUIRES A MODIFICATION TO THE CONSTRUCTION LIMITS, WRITTEN PERMISSION MUST BE OBTAINED FROM THE OWNER'S REPRESENTATIVE PRIOR TO ANY DISTURBANCE OUTSIDE OF THE LIMITS OF WORK.
- THE CONTRACTOR SHALL BE RESPONSIBLE FOR THE REPAIR OF ANY OF THEIR TRENCHES OR EXCAVATIONS THAT SETTLE.
- THE CONTRACTOR SHALL BE RESPONSIBLE TO PREPARE AND SUBMIT A TRAFFIC CONTROL PLAN TO THE APPROPRIATE JURISDICTIONAL AGENCIES AND THE OWNER'S REPRESENTATIVE IF THEIR WORK AND OPERATIONS AFFECT OR IMPACT THE PUBLIC RIGHTS-OF-WAY. OBTAIN APPROVAL PRIOR TO ANY WORK WHICH AFFECTS OR IMPACTS THE PUBLIC RIGHTS-OF-WAY. THE CONTRACTOR SHALL BE RESPONSIBLE FOR ANY FINES OR PENALTIES ASSESSED TO THE OWNER RELATING TO THIS REQUIREMENT DURING THE CONTRACT PERIOD.
- SIGHT TRIANGLES AND SIGHT LINES SHALL REMAIN UNOBSTRUCTED BY EQUIPMENT, CONSTRUCTION MATERIALS, PLANT MATERIAL OR ANY OTHER VISUAL OBSTACLE DURING THE CONTRACT PERIOD AND AT MATURITY OF PLANTS PER LOCAL JURISDICTIONAL REQUIREMENTS. NO PLANT MATERIAL OTHER THAN GROUND COVER IS ALLOWED TO BE PLANTED ADJACENT TO FIRE HYDRANTS AS STIPULATED BY JURISDICTIONAL REQUIREMENTS.
- COORDINATE SITE ACCESS, STAGING, STORAGE AND CLEAN OUT AREAS WITH OWNER'S REPRESENTATIVE.
- CONTRACTOR IS RESPONSIBLE FOR PROVIDING TEMPORARY SAFETY FENCING AND BARRIERS AROUND ALL IMPROVEMENTS SUCH AS WALLS, PLAY STRUCTURES, EXCAVATIONS, ETC. ASSOCIATED WITH THEIR WORK UNTIL SUCH FACILITIES ARE COMPLETELY INSTALLED PER THE PLANS, SPECIFICATIONS AND MANUFACTURER'S RECOMMENDATIONS.
- CONTRACTOR SHALL BE RESPONSIBLE FOR PROTECTION OF THEIR MATERIAL STOCKPILES CONCRETE IN THE STORM SEWER IS PROHIBITED.
- THE CONTRACTOR SHALL KNOW, UNDERSTAND AND ABIDE BY ANY STORM WATER POLLUTION PREVENTION PLAN (SWPPP) ASSOCIATED WITH THE SITE. IF A STORM WATER POLLUTION PREVENTION PLAN IS NOT PROVIDED BY THE OWNER'S REPRESENTATIVE, REQUEST A COPY BEFORE PERFORMANCE OF ANY SITE WORK.
- CONTRACTOR SHALL MAINTAIN ANY STORM WATER MANAGEMENT FACILITIES THAT EXIST ON SITE FOR FULL FUNCTIONALITY. THE CONTRACTOR SHALL INSTALL AND MAINTAIN ANY NEW STORM WATER MANAGEMENT FACILITIES THAT ARE IDENTIFIED IN THE SCOPE OF WORK TO FULL FUNCTIONALITY. THE CONTRACTOR SHALL BE RESPONSIBLE FOR ANY FINES OR PENALTIES ASSESSED TO THE OWNER FOR FAILURE TO MAINTAIN STORM WATER MANAGEMENT FACILITIES DURING THE CONTRACT PERIOD.
- THE CONTRACTOR SHALL PREVENT SEDIMENT, DEBRIS AND ALL OTHER POLLUTANTS FROM EXITING THE SITE OR ENTERING THE STORM SEWER SYSTEM DURING ALL DEMOLITION OR CONSTRUCTION OPERATIONS THAT ARE PART OF THIS PROJECT. THE CONTRACTOR SHALL BE RESPONSIBLE FOR ANY FINES OR PENALTIES ASSESSED TO THE OWNER RELATING TO THESE REQUIREMENTS DURING THEIR CONTRACTED COURSE OF WORK.
- THE CONTRACTOR SHALL BE RESPONSIBLE TO PREVENT ANY IMPACTS TO ADJACENT WATERWAYS, WETLANDS, OR OTHER ENVIRONMENTALLY SENSITIVE AREAS RESULTING FROM WORK DONE AS PART OF THIS PROJECT. THE CONTRACTOR SHALL BE RESPONSIBLE FOR ANY FINES OR PENALTIES ASSESSED TO THE OWNER RELATING TO THESE STANDARDS DURING THEIR CONTRACTED COURSE OF WORK.
- THE CONTRACTOR AND OR THEIR AUTHORIZED AGENTS SHALL INSURE THAT ALL LOADS OF CONSTRUCTION MATERIAL IMPORTED TO OR EXPORTED FROM THE PROJECT SITE SHALL BE PROPERLY COVERED TO PREVENT LOSS OF MATERIAL DURING TRANSPORT. TRANSPORTATION METHODS ON PUBLIC RIGHT-OF-WAYS SHALL CONFORM TO JURISDICTIONAL REQUIREMENTS. THE CONTRACTOR SHALL BE RESPONSIBLE FOR ANY FINES OR PENALTIES ASSESSED TO THE OWNER RELATING TO THESE REQUIREMENTS.
- THE CLEANING OF EQUIPMENT IS PROHIBITED AT THE JOB SITE UNLESS AUTHORIZED BY THE OWNER'S REPRESENTATIVE IN A DESIGNATED AREA. THE DISCHARGE OF WATER, WASTE CONCRETE, POLLUTANTS, OR OTHER MATERIALS SHALL ONLY OCCUR IN AREAS DESIGNED FOR SUCH USE AND APPROVED BY THE OWNER'S REPRESENTATIVE.



KEY MAP

VICINITY MAP

SYMBOLS & ABBREVIATIONS

AC = ACRE	EXP. = EXPANSION	O.C. = ON CENTER	
APPROXIMATE = APPROX.	EW = EACH WAY	O.D. = OUTSIDE DIAMETER	
B&B = BALL AND BURLAP	FF = FINISH FLOOR	P.O.B. = POINT OF BEGINNING	
BOC = BACK OF CURB	F.G. = FINISH GRADE	P.O.C. = POINT OF CONNECTION	
B.M. = BENCH MARK	FIN. = FINISH	P.V.C. = POLYVINYL CHLORIDE	
BLDG. = BUILDING	F.H. = FIRE HYDRANT	PIPE	
B.S. = BOTTOM OF STAIR	FL = FLOW LINE	PL = PROPERTY LINE	
B.W. = BOTTOM OF WALL	FTG. = FOOTING	R = RADIUS	
CAL. = CALIPER	FT. = FEET	R.C.P. = REINFORCED CONCRETE PIPE	
C.B. = CATCH BASIN	GA. = GAUGE	R.O.W. = RIGHT OF WAY	
CL CATCH BASIN CENTER LINE	GALV. = GALVANIZED	REQ'D. = REQUIRED	
C.O. = CLEANOUT	H.W. = HEAD WALL	REINF. = REINFORCED	
COL. = COLUMN	H.P. = HIGH POINT	SHT. = SHEET	
CONC. = CONCRETE	HT. = HEIGHT	SPEC. = SPECIFICATIONS	
CONT. = CONTINUOUS	HORIZ. = HORIZON	S.O. = SQUARE	
CONTR. = CONTRACTOR	I.D. = INNER DIAMETER	S.F. = SQUARE FEET	
C.F. = CUBIC FEET	IN. = INCH	S.V. = SQUARE YARD	
C.Y. = CUBIC YARD	INV. = INVERT	S.S. = STAINLESS STEEL	
DET. = DETAIL	L.P. = LOW POINT	T.C. = TOP OF CURB	
DIM. = DIMENSION	L.F. = LINEAR FEET	T.S. = TOP OF STAIR	
DIA. = DIAMETER	MAX. = MAXIMUM	T.W. = TOP OF WALL	
DWG. = DRAWING	M.H. = MAN HOLE	TYP. = TYPICAL	
EA. = EACH	MIN. = MINIMUM	VERT. = VERTICAL	
ELEV. = ELEVATION	MSC. = MISCELLANEOUS	W/O = WITH OUT	
EXIST. = EXISTING	N.I.C. = NOT IN CONTRACT	W.W.M. = WOVEN WIRE MESH	
E.P. = EDGE OF PAVING	N.T.S. = NOT TO SCALE		

Sheet Number	Sheet Title
L0.0	LANDSCAPE COVER SHEET
L0.1	LANDSCAPE NOTES & PLANT SCHEDULE
L1.0	OVERALL LANDSCAPE PLAN
L1.1	LANDSCAPE PLAN
L1.2	LANDSCAPE PLAN
L1.3	LAYOUT, GRADING & MATERIAL ENLARGEMENTS
L1.4	LAYOUT, GRADING & MATERIAL ENLARGEMENTS
L2.0	LANDSCAPE DETAILS
L2.1	LANDSCAPE DETAILS
IR1.0	IRRIGATION LEGEND AND NOTES
IR1.1	IRRIGATION PLAN
IR1.2	IRRIGATION PLAN
IR2.1	IRRIGATION DETAILS
IR2.2	IRRIGATION DETAILS

OWNER / DEVELOPER PLANNER / LANDSCAPE ARCHITECT CIVIL ENGINEER

ESX MANAGEMENT
7353 SOUTH ALTON WAY
CENTENNIAL, CO 80112

people creating spaces
pcs group inc. www.pcsgroupco.com
#3, 18-180 Independence plaza
1007 14th street, denver co 80265
1.303.531.4905 f.303.531.4908

CVL
CONSULTANTS
10333 E. DRY CREEK RD. #240
ENGLEWOOD, CO 80112
720-482-9526

Prepared For

ESX MANAGEMENT
7353 SOUTH ALTON WAY
CENTENNIAL, CO 80112

Land Planning



pcs group inc. www.pcsgroupco.com
#3, 18-180 Independence plaza
1007 14th street, denver co 80265
1.303.531.4905 f.303.531.4908

Engineering



10333 E. DRY CREEK RD. #240
ENGLEWOOD, CO 80112
720-482-9526

TRAILS AT CROWFOOT
FILING 15 LANDSCAPE PLANS
PARKER, COLORADO

Drawn by: BEM, GG, JWD

Checked by: PCS STAFF

Submittal Date: 06.20.2018

09.26.2018

10.29.2018

06.25.2020



Sheet Name

LANDSCAPE COVER SHEET

Sheet Number

L0.0

LANDSCAPE NOTES

- SITE PREP**
- LANDSCAPE CONTRACTOR TO REFERENCE CIVIL ENGINEERING DRAWINGS REGARDING DRAINAGE AND EROSION CONTROL NOTES, DETAILS AND PROCEDURES.
 - ALL WORK SHALL CONFORM TO LOCAL MUNICIPAL CODES. ALL WORK SHALL BE IN ACCORDANCE WITH OSHA CODES AND STANDARDS. NOTHING INDICATED ON THE LANDSCAPE DRAWINGS SHALL RELIEVE THE CONTRACTOR FROM COMPLYING WITH ANY APPROPRIATE SAFETY REGULATIONS. ALL UTILITY EASEMENTS SHALL REMAIN UNOBSTRUCTED AND FULLY ACCESSIBLE ALONG THEIR ENTIRE LENGTH FOR USE OF MAINTENANCE EQUIPMENT ENTRY.
 - SEE CIVIL ENGINEER'S DRAWINGS FOR GRADING AND DRAINAGE, EROSION CONTROL, PAVING AND SLEEVES, UTILITIES, AND OTHER ENGINEERED DETAILS.
 - CONTRACTOR SHALL ENSURE POSITIVE DRAINAGE AWAY FROM ALL STRUCTURES.
 - A PRE-CONSTRUCTION MEETING MAY BE REQUIRED BETWEEN THE LANDSCAPE CONTRACTOR, PROPERTY OWNER AND LANDSCAPE ARCHITECT BEFORE START OF CONSTRUCTION.
 - CONTRACTOR SHALL MINIMIZE ALL DISTURBANCE TO NON-IMPACTED AREAS.
 - SITE MUST BE CLEAN AND FREE OF ALL CONSTRUCTION DEBRIS BEFORE FINAL ACCEPTANCE.
 - CONTRACTOR IS RESPONSIBLE FOR SETUP OF BARRICADES, WARNING SIGNAGE, OR OTHER PROTECTIVE DEVICES IF ANY EXCAVATIONS ARE LEFT EXPOSED AFTER ON-SITE WORK HOURS.
 - IT IS THE CONTRACTOR'S RESPONSIBILITY TO ACQUIRE ALL NECESSARY PERMITS FOR CONSTRUCTION WORK WITHIN THE LOCAL JURISDICTION. A SEPARATE LANDSCAPE CONSTRUCTION PERMIT IS REQUIRED AND USE AND SALES TAX WILL BE COLLECTED. WATER CONNECTION FEES ARE TO BE PAID PRIOR TO THE METER SETTING. A BACK FLOW PERMIT AND INSPECTION IS REQUIRED PRIOR TO THE METER BEING INSTALLED IN THE VAULT.
 - TOPSOIL IS TO BE STRIPPED & STOCKPILED ON-SITE FOR LATER USE.
 - CONTRACTOR IS RESPONSIBLE FOR REPLACEMENT OF ANY EXISTING OR NEW SITE IMPROVEMENTS DISTURBED OR DAMAGED DUE TO THEIR OPERATIONS. DAMAGED MATERIALS SHALL BE REPLACED/REPAIRED TO ITS PRIOR CONDITION.
 - LOCATE ALL UTILITIES PRIOR TO ANY DIGGING OR LANDSCAPE PLANTING. CONTRACTOR SHALL HAND DIG ALL PLANTING PITS ADJACENT TO UTILITIES. IF UTILITIES ARE DAMAGED, REPAIRS SHALL BE MADE AT THE CONTRACTOR'S EXPENSE.
 - PRIOR TO INSTALLATION OF PLANT MATERIALS, AREAS THAT HAVE BEEN COMPACTED OR DISTURBED BY CONSTRUCTION ACTIVITY SHALL BE THOROUGHLY LOOSENEED & AMENDED.
 - ALL LANDSCAPE AREAS SHALL RECEIVE SOIL AMENDMENT ROTOTILLED AT A MIN. 8" DEPTH AT A RATE OF 4 CUBIC YARDS PER 1,000 SF.
 - CONTRACTOR SHALL SUBMIT SOIL AMENDMENT SPECIFICATIONS FOR APPROVAL PRIOR TO INSTALLATION.
 - THE LANDSCAPE CONTRACTOR SHALL BE RESPONSIBLE FOR ENSURING POSITIVE DRAINAGE EXISTS IN ALL LANDSCAPE AREAS. SURFACE DRAINAGE ON LANDSCAPE AREAS SHALL NOT FLOW TOWARD STRUCTURES AND FOUNDATIONS. MAINTAIN SLOPE AWAY FROM FOUNDATIONS PER THE GEOTECH REPORT RECOMMENDATIONS. ALL LANDSCAPE AREAS BETWEEN WALKS AND CURBS SHALL DRAIN FREELY TO THE CURB UNLESS OTHERWISE IDENTIFIED ON THE GRADING PLAN. IN NO CASE SHALL THE GRADING MATERIALS DAM WATER AGAINST WALKS. MINIMUM SLOPES ON LANDSCAPE AREAS SHALL BE 2% MAXIMUM SLOPE SHALL BE 25% UNLESS SPECIFICALLY IDENTIFIED ON THE PLANS OR APPROVED BY LANDSCAPE ARCHITECT.
- TURF, PLANT & GROUND COVER MATERIAL**
- ANY SUBSTITUTION OR ALTERATION OF PLANT OR LANDSCAPE MATERIALS IN LOCATION, SPECIES, TYPE, ETC. SHALL BE ALLOWED ONLY WITH APPROVAL OF THE LANDSCAPE ARCHITECT. OVERALL PLANT QUANTITY AND QUALITY TO BE CONSISTENT WITH APPROVED PLANS, ANY CHANGES TO THE APPROVED LANDSCAPE PLAN WILL REQUIRE TOWN APPROVAL.
 - ALL PLANT MATERIALS SHALL BE IN ACCORDANCE WITH AAN SPECIFICATIONS FOR NUMBER ONE GRADE.
 - PROPOSED TREE LOCATIONS SHALL HAVE A MINIMUM SEPARATION OF 4' BETWEEN WATER OR SEWER SERVICE LINES AND A MINIMUM SEPARATION OF 10' BETWEEN WATER OR SEWER MAIN LINES. PROPOSED TREE LOCATIONS SHALL HAVE A MINIMUM SEPARATION OF 4' BETWEEN GAS LINES.
 - ALL PROPOSED IRRIGATED TURF AREAS SHALL BE SODDED WITH THE BLEND SPECIFIED IN THESE PLANS. SOD SHALL BE LAID ON A FIRM BED WITH TIGHT JOINTS AND WITHOUT VOIDS.
 - TREE WRAP TO BE APPLIED IN LATE FALL AFTER INSTALLATION, AND REMOVED THE FOLLOWING SPRING. REMOVE ANY STRING OR WIRE AROUND TREE TRUNKS AT TIME OF INSTALLATION.
 - CONTRACTOR SHALL REPORT ANY DISCREPANCY FOUND IN THE FIELD VERSUS THE LANDSCAPE DRAWINGS IMMEDIATELY TO THE LANDSCAPE ARCHITECT, OWNER'S REPRESENTATIVE, AND/OR THE CITY/COUNTY PRIOR TO ANY CONSTRUCTION OR DEMOLITION ACTIVITY. FAILURE TO MAKE SUCH CONFLICTS KNOWN WILL RESULT IN THE CONTRACTOR'S LIABILITY TO RELOCATE AND REPAIR.
 - MAINTAIN A MINIMUM THREE FOOT CLEARANCE AROUND FIRE HYDRANTS, FIRE DEPARTMENT CONNECTIONS OR OTHER FIRE SERVICE EQUIPMENT. NO TREES OR SHRUBS WILL BE ALLOWED WITHIN THIS AREA.
 - TREES SHALL NOT BE LOCATED IN DRAINAGE SWALES, AREAS OR UTILITY EASEMENTS. CONTACT LANDSCAPE ARCHITECT FOR RELOCATION OF PLANTS IN QUESTIONABLE AREAS PRIOR TO INSTALLATION.
 - THE CENTER OF EVERGREEN TREES SHALL NOT BE PLACED CLOSER THAN 8' AND THE CENTER OF ORNAMENTAL TREES CLOSER THAN 8' FROM A

FINE GRADING NOTES

- SLOPES NOT TO EXCEED 4:1 MAX. - 1% MIN.
- SATISFACTORY SOILS: ASTM D 2487 SOIL CLASSIFICATION GROUPS GW, GP, GM, SW, SP, AND SM, OR A COMBINATION OF THESE GROUP SYMBOLS; FREE OF ROCK OR GRAVEL LARGER THAN 3 INCHES (75 MM) IN ANY DIMENSION, DEBRIS, WASTE, FROZEN MATERIALS, VEGETATION, AND OTHER DELETERIOUS MATTER.
- STRIP TOPSOIL TO WHATEVER DEPTHS ARE ENCOUNTERED IN A MANNER TO PREVENT INTERMINGLING WITH UNDERLYING SUBSOIL OR OTHER WASTE MATERIALS.
- STRIP EXISTING SURFACES OF UNSUITABLE TOPSOIL, INCLUDING TRASH, DEBRIS, WEEDS, ROOTS, AND OTHER WASTE MATERIALS.
- STOCKPILE TOPSOIL MATERIALS ON-SITE WITHOUT INTERMINGLING WITH SUBSOIL.
- REMOVE EXISTING VEGETATION, DEBRIS, UNSATISFACTORY SOIL MATERIALS, OBSTRUCTIONS, AND DELETERIOUS MATERIALS FROM GROUND SURFACE BEFORE PLACING FILLS.
- PLOW, SCARIFY, BENCH, OR BREAK UP SLOPED SURFACES STEEPER THAN 1 VERTICAL TO 4 HORIZONTAL. SO FILL MATERIAL WILL BOND WITH EXISTING MATERIAL.
- PLACE AND COMPACT FILL MATERIAL IN LAYERS TO REQUIRED CROSS-SECTIONS, ELEVATIONS AND GRADES WITH SATISFACTORY SOIL MATERIAL.
- UNIFORMLY GRADE AREAS TO A SMOOTH SURFACE, FREE FROM IRREGULAR SURFACE CHANGES. COMPLY WITH COMPACTION REQUIREMENTS AND GRADE TO CROSS SECTIONS, LINES, AND ELEVATIONS INDICATED.

SEEDING ESTABLISHMENT NOTES:

- SEED SHALL BE LABELED IN ACCORDANCE WITH THE U.S. DEPARTMENT OF AGRICULTURE, RULES AND REGULATIONS AND FEDERAL SEED ACT. SEED SHALL BE EQUAL IN QUALITY TO THE STANDARDS FOR "CERTIFIED SEED" AND SHALL BE FURNISHED IN SEALED, UNOPENED, STANDARD CONTAINERS. SEED SHALL BE FRESH, CLEAN, PURE LIVE SEED WITH THE VARIETIES MIXED IN PROPORTIONS BY WEIGHT SHOWN AND MEETING THE MINIMUM PERCENTAGES OF PURITY AND GERMINATION SPECIFIED.
- SEED SHALL BE APPLIED AT A RATE SHOWN BY MX. SEED SHALL PASS GOVERNMENT TEST OF GERMINATION OF EIGHTY PERCENT (80%) AND FOR PURITY OF NINETY PERCENT (90%). THE PURE LIVE SEED SHALL NOT BE LESS THAN SIXTY SEVEN ON ONE-HALF PERCENT (67.5%) FOR ANY ONE VARIETY, WITH THE AVERAGE OF THE MIXTURE, NO LESS THAN SEVENTY TWO PERCENT (72%). ALL SEED SHALL BE FREE OF POA ANNUA AND ALL NOXIOUS OBJECTIONABLE WEEDS WITH A MAXIMUM CROP OF ONE-TENTH PERCENT (0.1%) AND MAXIMUM WEED OF ONE TENTH PERCENT (0.1%). IF SEED AVAILABLE ON THE MARKET DOES NOT MEET THE MINIMUM PURITY AND GERMINATION PERCENTAGES SPECIFIED, THE CONTRACTOR MUST COMPENSATE BY FURNISHING SUFFICIENT ADDITIONAL SEED TO EQUAL THE SPECIFIED PRODUCT.
- SPREAD ORGANIC SOIL AMENDMENT MATERIALS, AT A RATE OF 3 C.Y. PER 1000 SQUARE FEET, EVENLY OVER ENTIRE DISTURBED AREA AND THOROUGHLY INCORPORATE, BY MIXING, ROTOTILLING OR FINELY DISKING (MAX. 1" SIZE), TO A DEPTH OF SIX INCHES. ALL STONES, STICKS AND DEBRIS BROUGHT TO THE SURFACE SHALL BE REMOVED FROM THE SITE PROPERLY DISPOSED OF BY THE CONTRACTOR, AT NO ADDITIONAL COST TO THE OWNER. ALL SEED AREAS WILL THEN BE RAKED AND ROLLED TO THE DESIRED FINISHED GRADES WITH GENTLY SLOPING SURFACES TO ADEQUATELY DRAIN ALL SURFACE WATER RUNOFF. THE FINISHED SURFACE SHALL BE EVEN AND UNIFORM AND NO DIRT CLODS LARGER THAN ONE INCH (1") IN DIAMETER SHALL APPEAR ON THE SURFACE. THE SOIL SURFACE SHALL BE SMOOTH, LOOSE AND OF FINE TEXTURE, AND BE FLUSH WITH ALL PAVING EDGES.
- CONTRACTOR SHALL USE APPROPRIATE MECHANICAL POWER (BRILLION SEEDER OR EQUAL) TO DRILL THE SEED INTO THE SEEDBED WHEREVER POSSIBLE. SEED SHALL BE SOWN TO A DEPTH OF ONE-HALF INCH (1/2"). DRILLING SHALL BE DONE IN 2 SEPARATE OPERATIONS CROSSING THE AREA AT RIGHT ANGLES TO ONE ANOTHER TO GUARANTEE PROPER COVERAGE. ON SLOPING LAND, SEEDING OPERATIONS SHALL FOLLOW THE GENERAL CONTOUR. AREAS TOO SMALL TO DRILL SEED MAY BE BROADCAST BY HAND AND APPLICATION RATES SHALL BE DOUBLED. SEEDING OF ANY KIND WILL NOT BE PERMITTED WHEN WIND VELOCITY IS SUCH AS TO PREVENT UNIFORM SEED DISTRIBUTION. NO APPLICATION SHALL TAKE PLACE WITH THE PRESENCE OF FREE SURFACE WATER OR WHEN GROUND IS FROZEN OR CANNOT BE TILLED. ADDITIONAL TOPICAL OVER SEEDING MAY BE APPLIED TO PREVIOUSLY SEEDED AREAS IN ORDER TO ACHIEVE ADEQUATE GROUND COVER AND EROSION RESISTANCE.
- SEEDED AREAS MAY REQUIRE TEMPORARY ABOVE GROUND SPRAY IRRIGATION UNTIL ESTABLISHMENT. IRRIGATION SHALL BE REMOVED UPON ACCEPTANCE BY THE CITY. WHERE STEEP SLOPES OCCUR, LANDSCAPE CONTRACTOR MAY REQUIRE VARIOUS METHODS OF TEMPORARY

- SIDEWALK, STREET OR DRIVE LANE. EVERGREEN TREES SHALL NOT BE LOCATED ANY CLOSER THAN 15' FROM IRRIGATION ROTOR HEADS. NOTIFY LANDSCAPE ARCHITECT IF TREE LOCATIONS CONFLICT WITH THESE STANDARDS FOR FURTHER DIRECTION.
- ALL EVERGREEN TREES SHALL BE FULLY BRANCHED TO THE GROUND AND SHALL NOT EXHIBIT SIGNS OF ACCELERATED GROWTH AS DETERMINED BY LANDSCAPE ARCHITECT.
 - NO PLANT MATERIAL SHALL BE PLANTED WITHIN 10' OF ANY EXISTING OR PROPOSED ELECTRICAL SWITCHGEARS, TRANSFORMERS OR OTHER ELECTRICAL UTILITY EQUIPMENT. PLANT MATERIAL MAY BE FIELD ADJUSTED TO PROVIDE THE 10' CLEAR SPACE AND ACCESSIBILITY REQUIRED BY THE UTILITY'S OWNER/OPERATOR.
 - ANY TREES INSTALLED ABOVE RETAINING WALLS UTILIZING GEO-GRID MUST BE DUG TO PROTECT GEO-GRID. IF GEO-GRID MUST BE CUT TO INSTALL TREES, APPROVAL MUST BE GIVEN BY LANDSCAPE ARCHITECT PRIOR TO DOING WORK.
 - PROPOSED PLANT SPECIES MAY BE SUBJECT TO CHANGE PENDING COMMERCIAL AVAILABILITY AT TIME OF CONSTRUCTION. ALL SPECIES SUBSTITUTIONS SHALL BE APPROVED BY THE LANDSCAPE ARCHITECT PRIOR TO INSTALLATION. OVERALL PLANT QUANTITIES & SIZES SHALL REMAIN AS INDICATED ON THE PLANT SCHEDULE. CONTRACTOR SHALL VERIFY THAT ANY SUBSTITUTED PLANT SPECIES ARE ACCEPTABLE TO THE LOCAL MUNICIPALITY OR GOVERNING JURISDICTIONS.
 - IF SPECIFIED PLANTS ARE NOT COMMERCIALY AVAILABLE AT TIME OF CONSTRUCTION/INSTALLATION, CONTRACTOR SHALL COORDINATE WITH LANDSCAPE ARCHITECT FOR A SUBSTITUTION.

PLANTING BEDS

- ALL PROPOSED PLANTING BEDS SHALL CONTAIN THE SPECIFIED MULCH. ROCK MULCH BEDS SHALL INCLUDE MRAFI WEED BARRIER FABRIC OR EQUAL SECURED WITH PINS. OVERLAP FABRIC MIN. 2" AT EDGES. NO FABRIC IS REQUIRED IN WOOD MULCH AREAS.
- ROCK MULCH AROUND VEGETATION SHALL CONTAIN 1 1/2"-2" DIA. ROUND RIVER ROCK, TAN COLOR, 3" DEPTH.
- WOOD MULCH SHALL BE 'GORILLA HAIR' OR EQUAL SHREDDED CEDAR MULCH, 4" DEPTH.
- EDGING BETWEEN TURF AND PLANTING BEDS SHALL BE 12-GAUGE, GREEN COLOR, ROLLED-TOP, STEEL EDGING OR EQUIVALENT. ANY NO EDGING IS REQUIRED AGAINST HARDSCAPE/WALK AREAS OR AT TREE RING EDGES. EDGING SHALL BE INSTALLED TO AVOID IMPEDING DRAINAGE. RE: DETAILS FOR INSTALLATION IN LOW DRAINAGE AREAS.
- FOR TREES NOT IN PLANTING BEDS, ALLOW A 8"-9" DIAMETER BED (TREE RING) WITHOUT SOD AROUND ROOT COLLAR. APPLY SPECIFIED WOOD MULCH & DEPTH AROUND COLLAR FOLLOWING SOD INSTALLATION. NO FABRIC OR STEEL EDGER IS NECESSARY WITHIN TREE RINGS IN NATIVE AREAS. TREES IN PLANTING BEDS SHALL NOT HAVE WEED BARRIER INSTALLED WITHIN 6" OF THEIR TRUNKS.

HARDSCAPE

- REFER TO SITE PLANS & DETAILS FOR SPECIALTY CONCRETE LOCATIONS WHERE APPLICABLE.

IRRIGATION

- PERMANENT UNDERGROUND IRRIGATION IS REQUIRED IN ALL LANDSCAPE AREAS. 2) TURF AREAS ARE ZONED SEPARATELY FROM BED AREAS, 3) CONTROLLER TO INCLUDE RAIN SHUT-OFF. 4) HYDRONZONES WILL BE ON SEPARATE IRRIGATION ZONES ACCORDING TO WATER-DEMAND.
- REFER TO IRRIGATION PLANS FOR LIMITS AND TYPES OF IRRIGATION DESIGNED FOR THE LANDSCAPE. IN NO CASE SHALL IRRIGATION BE EMITTED WITHIN THE MINIMUM STANDARDS FROM BUILDING OR WALL FOUNDATIONS AS STIPULATED IN THE GEOTECHNICAL REPORT. ALL IRRIGATIONS DISTRIBUTION LINES, HEADS AND EMITTERS SHALL BE KEPT OUTSIDE THE MINIMUM DISTANCE AWAY FROM ALL BUILDING AND WALL FOUNDATIONS AS STIPULATED IN THE GEOTECH REPORT.
- TURF & IRRIGATED NATIVE AREAS (WHERE APPLICABLE) SHALL BE IRRIGATED BY AUTOMATIC POP-UP SPRAY SYSTEM. SHRUBS & PLANTING BEDS SHALL BE IRRIGATED WITH DRIP/BUBBLER SYSTEM.
- ALL TREES & SHRUBS OUTSIDE OF BEDS WITHIN NATIVE AREAS SHALL BE DRIP IRRIGATED. ALL IRRIGATION SHALL BE AN AUTOMATIC UNDERGROUND SYSTEM.
- REFER TO IRRIGATION PLANS FOR DETAILED INFORMATION.

MAINTENANCE

- CONTRACTOR IS TO MAINTAIN ALL PLANTINGS AND ASSOCIATED IRRIGATION SYSTEM INSTALLED UNDER THIS CONTRACT UNTIL FINAL ACCEPTANCE BY THE CITY AND TURNOVER TO OWNER. THIS MAINTENANCE SHALL INCLUDE PROPER WATERING OF ALL PLANTS, AND MOWING OF TURF/SEED AREAS IF NECESSARY.
- SITE MUST BE CLEAN AND FREE OF ALL CONSTRUCTION DEBRIS BEFORE FINAL ACCEPTANCE.
- ALL PLANT MATERIAL WILL BE COVERED BY A WARRANTY PERIOD. THE CONTRACTOR SHALL REPLACE DEAD, UNHEALTHY, OR OTHERWISE UNSATISFACTORY MATERIAL THROUGHOUT THIS PERIOD. THE WARRANTY SHALL BEGIN UPON FINAL ACCEPTANCE OF THE JOB.
- LANDSCAPING SHALL BE PLANTED AND MAINTAINED IN A LIVING CONDITION BY THE OWNER OR ASSIGNS OR OWNERS ASSOCIATION. TREES AND SHRUBS MUST HAVE A 100% ONGOING SURVIVAL RATE. ANY DEAD OR DAMAGED PLANT MATERIAL (AS DETERMINED BY THE LOCAL MUNICIPALITY) SHALL BE REPLACED. NON-LIVING GROUND COVERS, SUCH AS ROCK OR MULCH, MUST BE 100% INTACT AFTER ONE YEAR AND 100% INTACT THEREAFTER.
- LANDSCAPE AREAS WITHIN THE PROPERTY AND WITHIN THE ADJACENT RIGHT OF WAY SHALL BE MAINTAINED BY THE PROPERTY OWNER.

- PROVIDE A SMOOTH TRANSITION BETWEEN ADJACENT EXISTING GRADES AND NEW GRADES.
- CUT OUT SOFT SPOTS, FILL LOW SPOTS AND TRIM HIGH SPOTS TO COMPLY WITH REQUIRED SURFACE TOLERANCES.
- SITE GRADING: SLOPE GRADES TO DIRECT WATER AWAY FROM ADJACENT STRUCTURES AND TO PREVENT PONDING. FINISH SUBGRADES TO REQUIRED ELEVATIONS WITHIN THE FOLLOWING TOLERANCES:
 - A. AT LOCATIONS DESIGNATED FOR LAWN OR UNPAVED AREAS: PLUS OR MINUS 1 INCH (25 MM).
 - B. AT DESIGNATED PAVEMENT LOCATIONS: PLUS OR MINUS 1/2 INCH (13 MM).
- GRADING ON SLOPES: INSTALL EROSION STABILIZATION FABRIC PER MANUFACTURERS RECOMMENDATIONS ON SLOPED SURFACES EQUAL TO OR GREATER THAN A RATIO OF 1 VERTICAL FOOT TO 3 HORIZONTAL FEET.
- CONTRACTOR WILL ENGAGE A QUALIFIED INDEPENDENT GEOTECHNICAL ENGINEERING TESTING AGENCY TO PERFORM FIELD QUALITY-CONTROL TESTING.
- PROTECT NEWLY GRADED AREAS FROM TRAFFIC, FREEZING, AND EROSION. KEEP FREE OF TRASH AND DEBRIS.
- REPAIR AND REESTABLISH GRADES TO SPECIFIED TOLERANCES WHERE COMPLETED OR PARTIALLY COMPLETED SURFACES BECOME ERODED, RUTTED, SETTLED, OR WHERE THEY LOSE COMPACTION DUE TO SUBSEQUENT CONSTRUCTION OPERATIONS OR WEATHER CONDITIONS.
- WHERE SETTLING OCCURS BEFORE PROJECT CORRECTION PERIOD ELAPSES, REMOVE FINISHED SURFACE GRADING, BACKFILL WITH ADDITIONAL SOIL MATERIAL, COMPACT, AND RECONSTRUCT SURFACE GRADING.
- TRANSPORT SURPLUS SATISFACTORY SOIL TO DESIGNATED STORAGE AREAS ON OWNER'S PROPERTY. STOCKPILE OR SPREAD SOIL AS DIRECTED BY OWNER.

- IRRIGATION TO ACHIEVE SEED ESTABLISHMENT. SUCH METHODS SHALL BE IN COMPLIANCE WITH THE PROJECT'S EROSION CONTROL METHODS, BMP'S AND ALL CITY CODES AND REQUIREMENTS.
- MULCH WILL BE HYDRO MULCH. HYDRO MULCH SHALL BE CONWED 200 AND TACKIFIER OR APPROVED SUBSTITUTE MEETING THE FOLLOWING REQUIREMENTS.
 - I. VIRGIN WOOD CELLULOSE FIBER. MAY NOT CONTAIN ANY SUBSTANCE OR FIBER THAT MAY INHIBIT GERMINATION OR GROWTH OF GRASS SEEDS AND PLANTS.
 - II. DYE TO APPROPRIATE COLOR TO ALLOW PROPER METERING OF APPLICATION.
 - III. FIBERS MUST HAVE ABILITY TO BECOME EVENLY DISPERSED AND SUSPENDED WHEN AGITATED IN WATER.
 - IV. WHEN SPRAYED UNIFORMLY ON SURFACE OF SOIL, FIBERS SHALL FORM BLOTTER - LIKE GROUND COVER THAT READILY ABSORBS WATER, AND ALLOWS INFILTRATION TO UNDERLYING SOIL.
 - V. WEIGHT SPECIFICATIONS SHALL REFER ONLY TO AIR DRY WEIGHT OF FIBERS WITH A STANDARD MOISTURE CONTENT OF TEN PERCENT (10%).
 - VI. MULCH MATERIAL SHALL BE SUPPLIED IN CONTAINERS NOT WEIGHING OVER ONE HUNDRED (100) LBS AND SHOWING AIR DRY WEIGHT OF FIBERS.
 - VII. ORGANIC TACKIFIER MAY BE SUPPLIED WITH HYDROMULCH FIBERS OR BE ADDED AT A LATER TIME.

WEED MANAGEMENT

BEFORE SEEDING, REMOVE EXISTING WEEDS BY PULLING, TILLING UNDER AND/OR, APPLYING A GLYPHOSATE HERBICIDE SUCH AS ROUNDUP®. OR BY A COMBINATION OF THESE METHODS. FOR ADDITIONAL WEED CONTROL AFTER SITE PREPARATION, A SOIL FUMIGANT MAY BE USED, OR THE AREA MAY BE IRRIGATED TO ENCOURAGE WEED GROWTH AND THEN SPRAYED WITH A GENERAL HERBICIDE. IN VERY WEEDY AREAS, THE FOLLOWING METHOD IS SUGGESTED: (1) TILL SOIL OR SPRAY VEGETATION WITH ROUNDUP®. WHEN USING AN HERBICIDE, ALLOW VEGETATION TO DIE, THEN RAKE OUT THE DEAD DEBRIS. IF PERENNIAL WEEDS SUCH AS BINDWEED ARE PRESENT, USING AN HERBICIDE IS MORE EFFECTIVE THAN TILLING. (2) IRRIGATE TO ENCOURAGE GERMINATION OF WEED SEEDS NEAR THE SURFACE. MOST SEEDS WILL GERMINATE WITHIN TWO WEEKS IF CONSISTENT MOISTURE IS AVAILABLE. DO NOT TILL THE SOIL AGAIN BECAUSE THIS WILL BRING EVEN MORE WEED SEEDS UP TO THE SURFACE. (3) SPRAY ANY NEW GROWTH WITH ROUNDUP®. (4) AFTER RAKING OUT DEAD VEGETATION, ALLOW SOIL TO RECOVER FOR 4 WEEKS BEFORE PLANTING SEE. A RECOVERY PERIOD OF THIS DURATION IS ADVISABLE BECAUSE EXTENSIVE USE OF GLYPHOSATE HERBICIDES MAY CAUSE A DELAY IN GERMINATION AND IN THE VIGOROUS GROWTH OF SEEDLINGS. ONCE THE SEEDS HAVE GERMINATED, FURTHER WEED CONTROL IS USUALLY NECESSARY. IF PRACTICAL, PULL ALL WEEDS AS SOON AS THEY CAN BE IDENTIFIED. OTHER SUCCESSFUL TECHNIQUES ARE SPOT-SPRAYING WITH A GENERAL HERBICIDE OR SELECTIVELY CUTTING WEEDS WITH A STRING TRIMMER. BE SURE TO REMOVE WEEDS BEFORE THEY RESEED. ONCE ESTABLISHED, NATIVE AREAS MAY BE MOWED TWICE A SEASON OR AS REQUIRED TO MINIMIZE WEED GROWTH. FURTHER MOWING ADJACENT TO ROADWAYS AND PARK AREAS MAY BE REQUIRED AS SEASONAL DROUGHT AND FIRE CONDITIONS MAY DICTATE.

FILING 15 PLANT SCHEDULE

DECIDUOUS TREES	QTY	BOTANICAL NAME	COMMON NAME	ROOT	CALIPER/H.T.
AE	14	ACER PLATANOIDES 'EMERALD QUEEN'	EMERALD QUEEN MAPLE	B & B	2.5" CAL
AS	4	ACER PLATANOIDES 'SCHWEDLER'	SCHWEDLER MAPLE	B & B	2.5" CAL
HAC	21	CELTIS OCCIDENTALIS	COMMON HACKBERRY	B & B	2.5" CAL
GI	22	GLEDITSIA TRIACANTHOS 'IMPERIAL'	IMPERIAL HONEYLOCUST	B & B	2.5" CAL
GS	16	GLEDITSIA TRIACANTHOS INERMIS 'SHADEMASTER' TM	SHADEMASTER LOCUST	B & B	2.5" CAL
GK	5	GYMNOCLADUS DIOICA	KENTUCKY COFFEE TREE	B & B	2.5" CAL
OV	2	OSTRYA VIRGINIANA	AMERICAN HORNBEAM	B & B	2.5" CAL
PO	13	PLATANUS OCCIDENTALIS	AMERICAN SYCAMORE	B & B	2.5" CAL
QB	39	QUERCUS BICOLOR	SWAMP WHITE OAK	B & B	2.5" CAL
QR	1	QUERCUS RUBRA	RED OAK	B & B	2.5" CAL
RAL	3	TILIA AMERICANA 'REDMOND'	REDMOND AMERICAN LINDEN	B & B	2.5" CAL
TG2	19	TILIA CORDATA 'GLENLEVEN'	GLENLEVEN LITTLELEAF LINDEN	B & B	2.5" CAL
TG	17	TILIA CORDATA 'GREENSPIRE'	GREENSPIRE LITTLELEAF LINDEN	B & B	2.5" CAL
EVERGREEN TREES	QTY	BOTANICAL NAME	COMMON NAME	ROOT	CALIPER/H.T.
PSP	34	PINUS FLEXILIS	LIMBER PINE	B & B	6"-8" HT
PN	27	PINUS NIGRA	AUSTRIAN BLACK PINE	B & B	6"-8" HT
PPI	41	PINUS PONDEROSA	PONDEROSA PINE	B & B	6"-8" HT
ORNAMENTAL TREES	QTY	BOTANICAL NAME	COMMON NAME	ROOT	CALIPER/H.T.
ACM	9	ACER GINNALA 'COMPACTUM'	COMPACT AMUR MAPLE	B & B	2" CAL
AH	20	ACER TATARICUM 'HOT WINGS'	HOT WINGS TATARIAN MAPLE	B & B	2" CAL
AT	11	ALNUS TENUIFOLIA	THINLEAF ALDER	B & B	2" CAL
WKH	25	CRATAEGUS VIRIDIS 'WINTER KING'	'WINTER KING' HAWTHORN	B & B	2" CAL
SC	44	MALUS X 'SPRING SNOW'	SPRING SNOW CRAB APPLE	B & B	2" CAL
ORNAMENTAL GRASSES	QTY	BOTANICAL NAME	COMMON NAME	SIZE	HEIGHT/WIDTH
CK	474	CALAMAGROSTIS X ACUTIFLORA 'KARL FOERSTER'	FEATHER REED GRASS	1 GAL	4.5' X 2'
BOG	97	HELICTOTRICHON SEMPERVIRENS	BLUE OAT GRASS	1 GAL	3' X 2'
MG	169	MISCANTHUS SINENSIS 'GRACILLIMUS'	MAIDEN GRASS	1 GAL	4' X 5'
MY	89	MISCANTHUS SINENSIS 'YAKU JIMA'	'YAKU JIMA' DWARF MAIDEN GRASS	1 GAL	3' X 3'
PH	14	PANICUM VIRGATUM 'HEAVY METAL'	BLUE SWITCH GRASS	1 GAL	5' X 3'
PH2	25	PENNISETUM ALOPECUROIDES 'HAMELN'	HAMELN DWARF FOUNTAIN GRASS	5 GAL	
PB2	12	PENNISETUM ALOPECUROIDES 'LITTLE BUNNY'	LITTLE BUNNY FOUNTAIN GRASS	1 GAL	1' X 2'
ANNUALS/PERENNIALS	QTY	BOTANICAL NAME	COMMON NAME	SIZE	HEIGHT/WIDTH
AHC	57	AGASTACHE X 'CORANADO RED'	ANISE HYSOPP	1 GAL	2.5' X 3'
EP	224	ECHINACEA PURPUREA	PURPLE CONEFLOWER	1 GAL	2' X 2'
BES	141	RUDBECKIA FULGIDA SULLIVANTII 'GOLDSTURM'	BLACK-EYED SUSAN	1 GAL	1.5' X 1.5'
SP	59	SCABIOSA CAUCASICA 'PERFECTA BLUE'	PINCUSHION FLOWER	1 GAL	2.5' X 1.5'
DECIDUOUS SHRUBS	QTY	BOTANICAL NAME	COMMON NAME	SIZE	HEIGHT/WIDTH
SSB	9	AMELANCHIER ALNIFOLIA 'REGENT'	SASKATOON SERVICEBERRY	5 GAL	12' X 8'
AG	34	AMELANCHIER X GRANDIFLORA 'AUTUMN BRILLIANCE'	'AUTUMN BRILLIANCE' SERVICEBERRY	5 GAL	15' X 10'
CD	159	CARYOPTERIS X CLANDONENSIS 'DARK KNIGHT'	BLUE MIST SHRUB	5 GAL	3' X 4'
CI	148	CERCOCARPUS INTRICATUS	LITTLE LEAF MOUNTAIN MAHOGANY	5 GAL	5' X 5'
CB	21	CORNUS SERICEA 'BAILEY'	RED TWIG DOGWOOD	5 GAL	8' X 8'
CD2	8	COTONEASTER DIVARICATUS	SPREADING COTONEASTER	5 GAL	6' X 6'
CH	21	COTONEASTER HORIZONTALIS	ROCK COTONEASTER	5 GAL	3' X 5'
PCS2	134	PENSTEMON STRICTUS	ROCKY MOUNTAIN PENSTEMON	5 GAL	2' X 3'
PJ	5	POTENTILLA FRUTICOSA 'JACKMANII'	JACKMAN'S POTENTILLA	5 GAL	3' X 4'
SCH	59	PRUNUS BESSEYI 'PAWNEE BUTTES'	PAWNEE BUTTES SAND CHERRY	5 GAL	18" X 6'
RHU	20	RHUS AROMATICA 'GRO-LOW'	GRO-LOW FRAGRANT SUMAC	5 GAL	3' X 6'
RT	5	RHUS TRILOBATA	THREE LEAF SUMAC	5 GAL	4' X 5'
RG	7	RIBES AUREUM	GOLDEN CURRANT	5 GAL	4' X 6'
SP2	5	SALIX PURPUREA 'NANA'	DWARF ARCTIC WILLOW	5 GAL	8' X 8'
EVERGREEN SHRUBS	QTY	BOTANICAL NAME	COMMON NAME	SIZE	HEIGHT/WIDTH
AE	15	ARCTOSTAPHYLOS X COLORADOENSIS 'CHIEFTAIN'	MANZANITA	5 GAL	2' X 5'
AP	4	ARCTOSTAPHYLOS X COLORADOENSIS 'PANCHITO'	PANCHITO MANZANITA	5 GAL	1.5' X 5'
CSM	112	CYTISUS SCOPARIUS 'MOONLIGHT'	MOONLIGHT BROOM	5 GAL	3' X 5'
EC	32	EUONYMUS FORTUNEI 'COLORATA'	PURPLE-LEAF WINTER CREEPER	5 GAL	2' X 5'
JB	19	JUNIPERUS HORIZONTALIS 'BLUE CHIP'	BLUE CHIP JUNIPER	5 GAL	8" X 10'
JH	28	JUNIPERUS HORIZONTALIS 'HUGHES'	HUGHES JUNIPER	5 GAL	15' X 6'
BUJ	47	JUNIPERUS SABINA 'BUFFALO'	BUFFALO JUNIPER	5 GAL	2' X 6'
BS	78	PINUS MUGO 'SLOWMOUND'	MUGO PINE	5 GAL	2.5' X 5'
GROUND COVERS	QTY	BOTANICAL NAME	COMMON NAME	CONT	
	0 SF	BUFFALO GRASS RE: LANDSCAPE NOTES	BUFFALO GRASS	SOD	
	152,815 SF	ENVIROTURF RE: LANDSCAPE NOTES	ENVIROTURF	SOD	
	864 SF	FIBAR PLAYGROUND MULCH	FIBAR PLAYGROUND MULCH	MULCH	
	22,152 SF	ROCK MULCH TAN, 2" DIA. RIVER ROCK 3" DEPTH. RE: LDSCP NOTES	ROCK MULCH TAN, 2" DIA. RIVER ROCK	MULCH	
	73,360 SF	SEED MIX 1 TOWN OF PARKER - SEED MIX 1, RE: LANDSCAPE NOTES	SEED MIX 1	SEED	

NOTES:

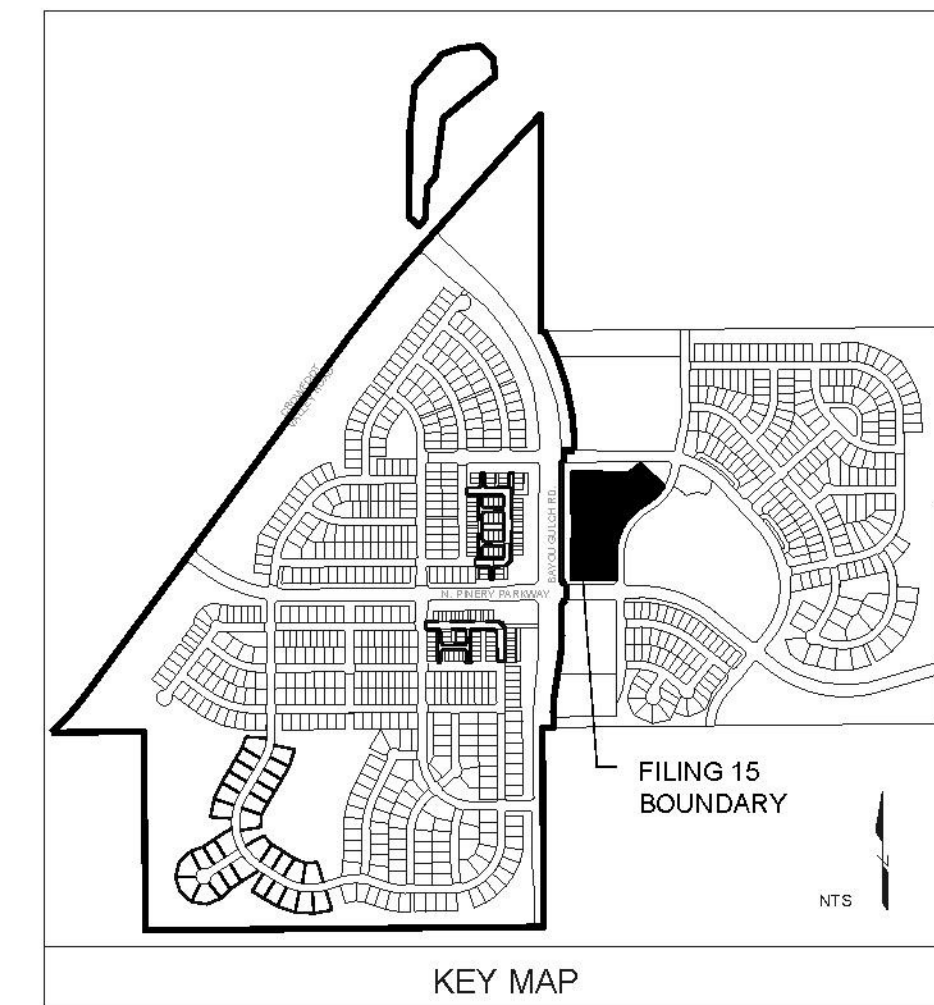
- DISTURBED AREAS TO BE RE-VEGETATED PER THE GRADING AND EROSION CONTROL PLANS.
- PER TREE CONSERVATION PLAN, ALL MITIGATED SHRUBS FROM REMOVAL OF EXISTING SHRUB MASSES SHALL BE PLANTED WITHIN THE PROPOSED LANDSCAPE.
- LANDSCAPE PLACEMENT IN THE TREE LAWN ADJACENT TO LOTS IS NOT FINAL AND MAY CHANGE BASED UPON DRIVEWAY AND UTILITY LOCATIONS.
- NO FENCES OR STRUCTURES WILL BE ALLOWED WITHIN SIGHT TRIANGLES.
- SHRUBS AND PLANTINGS WILL BE NO TALLER THAN 2' FEET WITHIN THE SIGHT TRIANGLE.
- TEMPORARY IRRIGATION FOR ESTABLISHMENT OF NATIVE VEGETATION MUST BE INSTALLED ABOVE GROUND, AND REMOVED IMMEDIATELY AFTER ESTABLISHMENT IS COMPLETE.

SEED MIXES

TOWN OF PARKER SEED MIX 1	PERCENTAGE	SEED MIX 2	PERCENTAGE
CANADA WILDFESCUE	29%	SLENDER WHEATGRASS	22%
CRESTED WHEATGRASS	15%	SODAR STREAMBANK WHEATGRASS	18%
SLENDER WHEATGRASS	15%	ARIZONA FESCUE	13%
ANNUAL PLYGRASS	10%	BLUE GRAMA	13%
SHEEP FESCUE	10%	BUFFALO GRASS	12%
BIG BLUESTEM	10%	BARLEY OR OATS	12%
SIDE-OATS GRAMA	10%	SPIKE MUHLY	5%
CANADA BLUEGRASS	5%	INDIAN RICEGRASS	5%
BLUE GRAMA	5%		
SEEDING RATE	DRILLED: 25 LBS/AC. BROADCAST: 50LBS/AC.	SEEDING RATE	DRILLED: 25 LBS/AC. BROADCAST: 50LBS/AC.

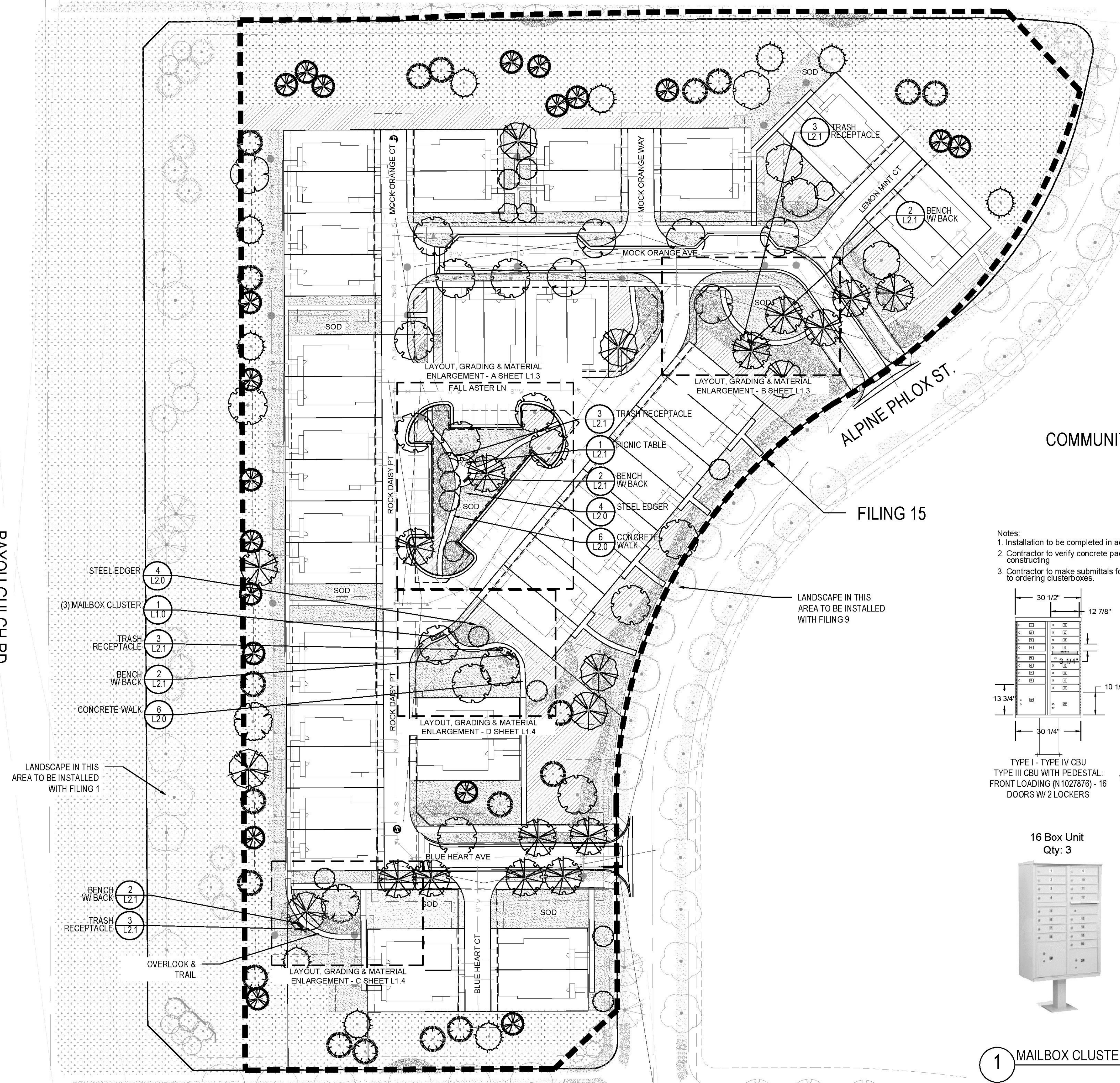
TEMPORARILY IRRIGATED

NATIVE SEED MIX	PERCENTAGE
EPHRAM CRESTED WHEATGRASS	25%
SHEEP FESCUE	23%
PERENNIAL RYEGRASS	18%
C	



- NOTES:
1. LANDSCAPE MATERIAL AND TREES IN TREE LAWNS ADJACENT TO LOTS ARE RESPONSIBILITY OF HOME BUILDER. STREET TREE LOCATIONS ARE NOT FINAL AND MAY CHANGE BASED UPON DRIVEWAY LOCATION.
 2. NO FENCES OR STRUCTURES WILL BE ALLOWED WITHIN SIGHT TRIANGLES.
 3. SHRUBS & PERENNIALS WITHIN SIGHT TRIANGLES WILL BE NO HIGHER THAN Z.
 4. MAILBOX CLUSTER LOCATIONS ARE CONCEPTUAL ONLY. FINAL LOCATIONS TO BE DETERMINED BY POSTMASTER.
 5. ALL FENCING TO BE INSTALLED AS PART OF FILING 1 OR 9.

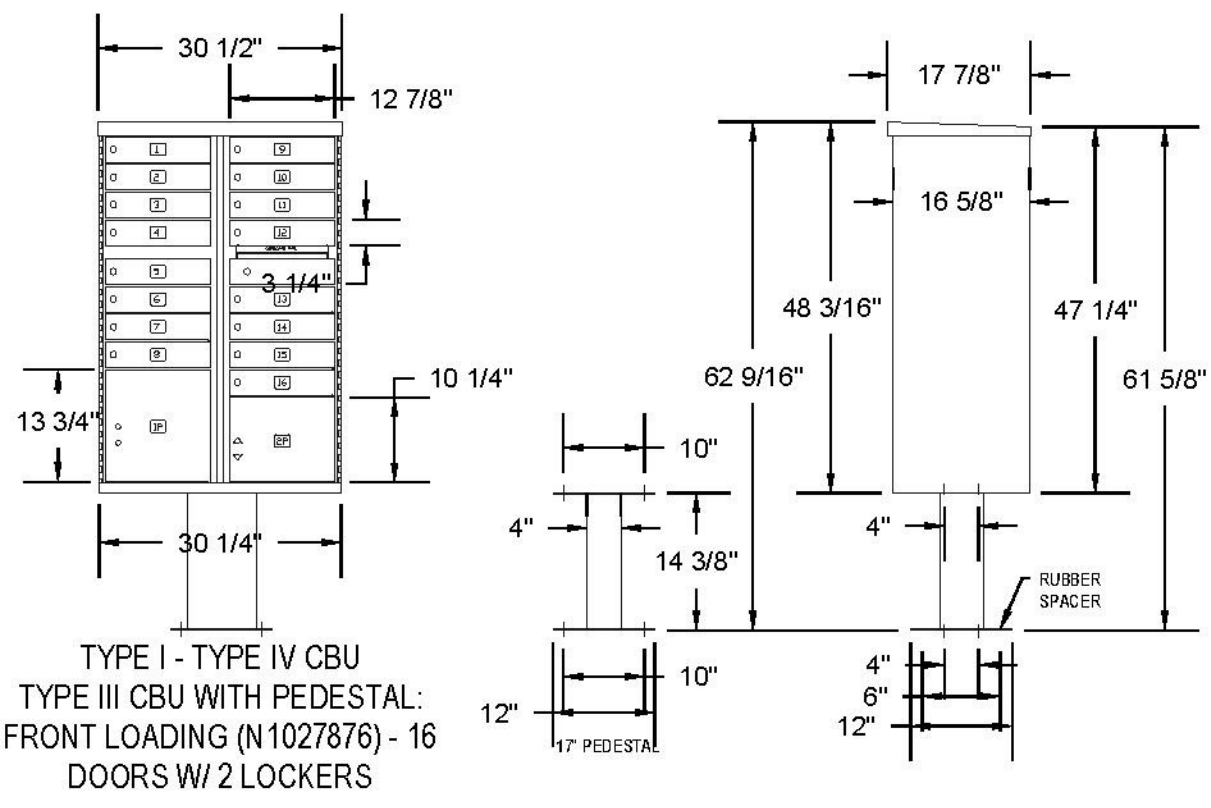
BAYOU GULCH RD.



COMMUNITY PARK

FILING 15

- Notes:
1. Installation to be completed in accordance with specifications by factory authorized installers.
 2. Contractor to verify concrete pad dimension & construction specifications with USPS before constructing
 3. Contractor to make submittals for mailbox cluster units for review & approval, with pricing info, prior to ordering cluster boxes.



POSTAL PRODUCTS UNLIMITED, INC
600 W OKLAHOMA AVE.
MILWAUKEE, WI 53207
TOLL FREE: 1-800-229-4500
PHONE: (414) 290-1500
FAX: (800) 570-0007
www.mailproducts.com

16 Box Unit
Qty: 3

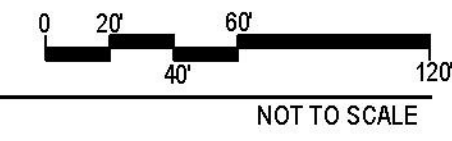


Note:
Final Mailbox Locations, Sizes and Specifications to be Coordinated and Approved by the U.S. Post Master.

Outdoor Pedestal Mailbox
Units: 12 Box (F181570-12)
16 Box (F181570-16)
Weight: 12 Box = 138 lbs
16 Box = 161 lbs
Height: 62" Width: 28.5" Depth: 17.5"

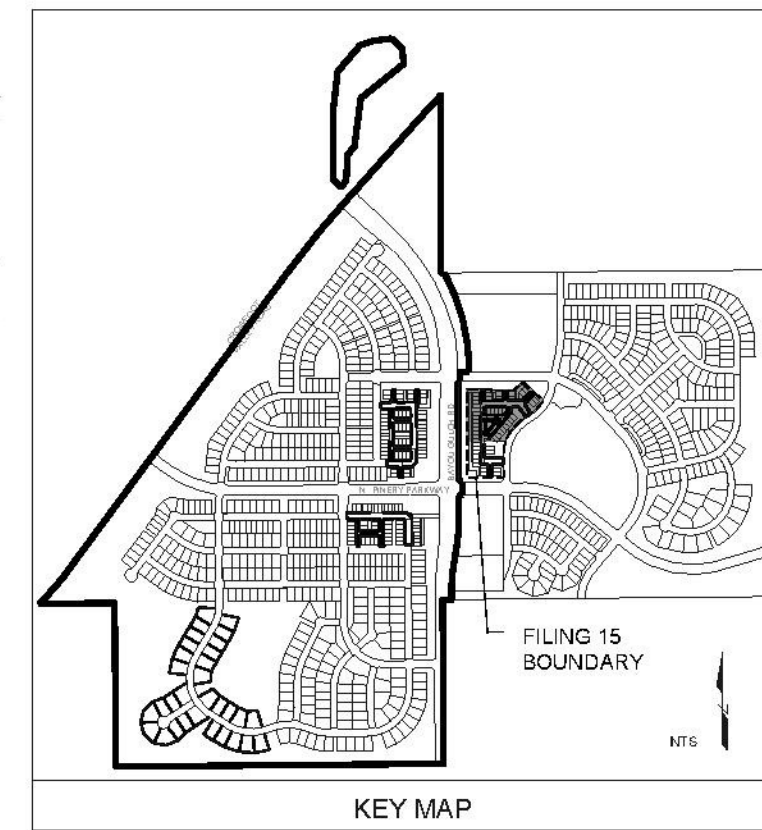
Available from:
U.S. Mail Supply
1.800.571.0147
www.usmailsupply.com

1 MAILBOX CLUSTER

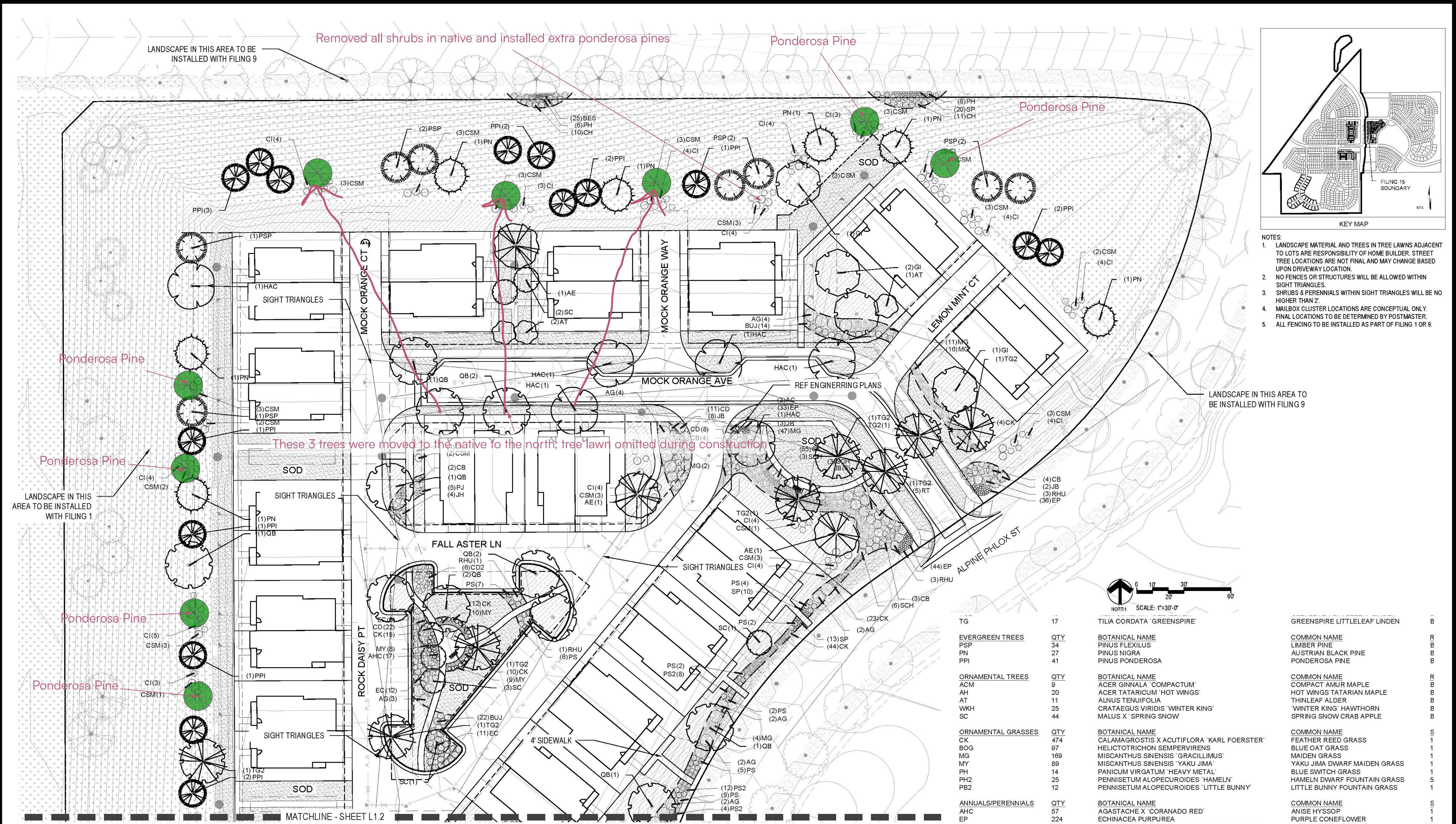


NOT TO SCALE





- NOTES:
- LANDSCAPE MATERIAL AND TREES IN TREE LAWNS ADJACENT TO LOTS ARE RESPONSIBILITY OF HOME BUILDER. STREET TREE LOCATIONS ARE NOT FINAL AND MAY CHANGE BASED UPON DRIVEWAY LOCATION.
 - NO FENCES OR STRUCTURES WILL BE ALLOWED WITHIN SIGHT TRIANGLES.
 - SHRUBS & PERENNIALS WITHIN SIGHT TRIANGLES WILL BE NO HIGHER THAN 2'.
 - MAILBOX CLUSTER LOCATIONS ARE CONCEPTUAL ONLY. FINAL LOCATIONS TO BE DETERMINED BY POSTMASTER.
 - ALL FENCING TO BE INSTALLED AS PART OF FILING 1 OR 9.



1 LANDSCAPE PLAN-FILING 15
SCALE: 1"=30'-0"

22,152 SF	ROCK MULCH TAN, 2" DIA. RIVER ROCK 3" DEPTH, RE: LANDSCAPE NOTES	ROCK MULCH TAN, 2" DIA. RIVER R
73,360 SF	SEED MIX 1 TOWN OF PARKER - SEED MIX 1, RE: LANDSCAPE NOTES	SEED MIX 1

FILING 15 PLANT SCHEDULE

DECIDUOUS TREES	QTY	BOTANICAL NAME	COMMON NAME
AE	14	ACER PLATANOIDES 'EMERALD QUEEN'	EMERALD QUEEN MAPLE
AS	4	ACER PLATANOIDES 'SCHWEDLERI'	SCHWEDLER MAPLE
HAC	21	CELTIS OCCIDENTALIS	COMMON HACKBERRY
GI	22	GLEDITSIA TRIACANTHOS 'IMPERIAL'	IMPERIAL HONEYLOCUST
GS	16	GLEDITSIA TRIACANTHOS INERMIS 'SHADEMASTER' TM	SHADEMASTER LOCUST
GK	5	GYMNOCLADUS DIOICA	KENTUCKY COFFEE TREE
OV	2	OSTRYA VIRGINIANA	AMERICAN HORNBEAM
PO	13	PLATANUS OCCIDENTALIS	AMERICAN SYCAMORE
QB	39	QUERCUS BICOLOR	SWAMP WHITE OAK
QR	1	QUERCUS RUBRA	RED OAK
RAL	3	TILIA AMERICANA 'REDMOND'	REDMOND AMERICAN LINDEN
TG2	19	TILIA CORDATA 'GLENLEVEN'	GLENLEVEN LITTLELEAF LINDEN

EVERGREEN TREES	QTY	BOTANICAL NAME	COMMON NAME
PSP	34	PINUS FLEXILIS	LIMBER PINE
PN	27	PINUS NIGRA	AUSTRIAN BLACK PINE
PPI	41	PINUS PONDEROSA	PONDEROSA PINE

ORNAMENTAL TREES	QTY	BOTANICAL NAME	COMMON NAME
ACM	9	ACER GINNALA 'COMPACTUM'	COMPACT ANJUR MAPLE
AH	20	ACER TATARICUM 'HOT WINGS'	HOT WINGS TATARIAN MAPLE
AT	11	ALNUS TENUIFOLIA	THINLEAF ALDER
WKH	25	CRATAEGUS VIRIDIS 'WINTER KING'	'WINTER KING' HAWTHORN
SC	44	MALUS X 'SPRING SNOW'	SPRING SNOW CRAB APPLE

ORNAMENTAL GRASSES	QTY	BOTANICAL NAME	COMMON NAME
CK	474	CALAMAGROSTIS X ACUTIFLORA 'KARL FOERSTER'	FEATHER REED GRASS
BOG	97	HELICTOTRICHON SEMPERVIRENS	BLUE OAT GRASS
MG	169	MISCANTHUS SINENSIS 'GRACILLIMUS'	MAIDEN GRASS
MY	89	MISCANTHUS SINENSIS 'YAKU JIMA'	YAKU JIMA DWARF MAIDEN GRASS
PH	14	PANICUM VIRGATUM 'HEAVY METAL'	BLUE SWITCH GRASS
PH2	25	PENNISETUM ALOPECUROIDES 'HADELN'	HADELN DWARF FOUNTAIN GRASS
PB2	12	PENNISETUM ALOPECUROIDES 'LITTLE BUNNY'	LITTLE BUNNY FOUNTAIN GRASS

ANNUALS/PERENNIALS	QTY	BOTANICAL NAME	COMMON NAME
AHC	57	AGASTACHE X 'CORANADO RED'	ANISE HYSSOP
EP	224	ECHINACEA PURPUREA	PURPLE CONEFLOWER
BES	141	RUBEBECKIA FULGIDA SULLIVANTII 'GOLDSTURM'	BLACK-EYED SUSAN
SP	59	SCABIOSA CAUCASICA 'PERFECTA BLUE'	PINCUSHION FLOWER

DECIDUOUS SHRUBS	QTY	BOTANICAL NAME	COMMON NAME
SSB	9	AMELANCHIER ALNIFOLIA 'REGENT'	SASKATOON SERVICEBERRY
AG	34	AMELANCHIER X GRANDIFLORA 'AUTUMN BRILLIANCE'	'AUTUMN BRILLIANCE' SERVICEBERRY
CD	159	CARYOPTERIS X CLANDONENSIS 'DARK KNIGHT'	BLUE MIST SHRUB
CI	148	CERCOCARPUS INTRICATUS	LITTLE LEAF MOUNTAIN MAHOGANY
CB	21	CORNUS SERICEA 'BAILEY'	RED TWIG DOGWOOD
CD2	6	COTONEASTER DIVARICATUS	SPREADING COTONEASTER
CH	21	COTONEASTER HORIZONTALIS	ROCK COTONEASTER
PS2	134	PENSTEMON STRICTUS	ROCKY MOUNTAIN PENSTEMON
PJ	4	POTENTILLA FRUTICOSA 'JACKMANII'	JACKMAN'S POTENTILLA
SCH	59	PRUNUS BESSEYI 'PAWNEE BUTTES'	PAWNEE BUTTES SAND CHERRY
RHU	20	RHUS AROMATICA 'GRO-LOW'	GRO-LOW FRAGRANT SUMAC
RT	5	RHUS TRILOBATA	THREE LEAF SUMAC
RG	7	RIBES AUREUM	GOLDEN CURRANT
SP2	5	SALIX PURPUREA 'NANA'	DWARF ARCTIC WILLOW

EVERGREEN SHRUBS	QTY	BOTANICAL NAME	COMMON NAME
AC	15	ARCTOSTAPHYLOS X COLORADOENSIS 'CHIEFTAIN'	MANZANITA
AP	4	ARCTOSTAPHYLOS X COLORADOENSIS 'PANCHITO'	PANCHITO MANZANITA
CSM	112	CYTISUS SCOPARIUS 'MOONLIGHT'	MOONLIGHT BROOM
EC	32	EUONYMUS FORTUNEI 'COLORATA'	PURPLE-LEAF WINTER CREEPER
JB	19	JUNIPERUS HORIZONTALIS 'BLUE CHIP'	BLUE CHIP JUNIPER
JH	28	JUNIPERUS HORIZONTALIS 'HIGHLIFE'	HIGHLIFE JUNIPER

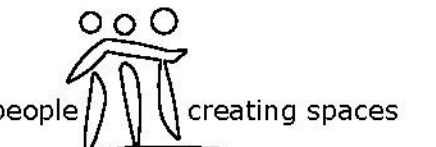
Y:\HESSE_RANCH\LANDSCAPE_ARCHITECTURE\CURRENT DWGS\HESSE-LDSCP PLANS - FILING-15_CDS.DWG
Saturday, June 23, 2018

TRAILS AT CROWFOOT
FILING 15 LANDSCAPE PLANS
PARKER, COLORADO

Drawn by: **BEW, GG, JWD**
Checked by: **PCS STAFF**
Submitted Date: 06.20.2018
Date: 06.26.2020
Know what's below. Call before you dig. **811**

Sheet Name: **LANDSCAPE PLAN**

Sheet Number: **L1.1**

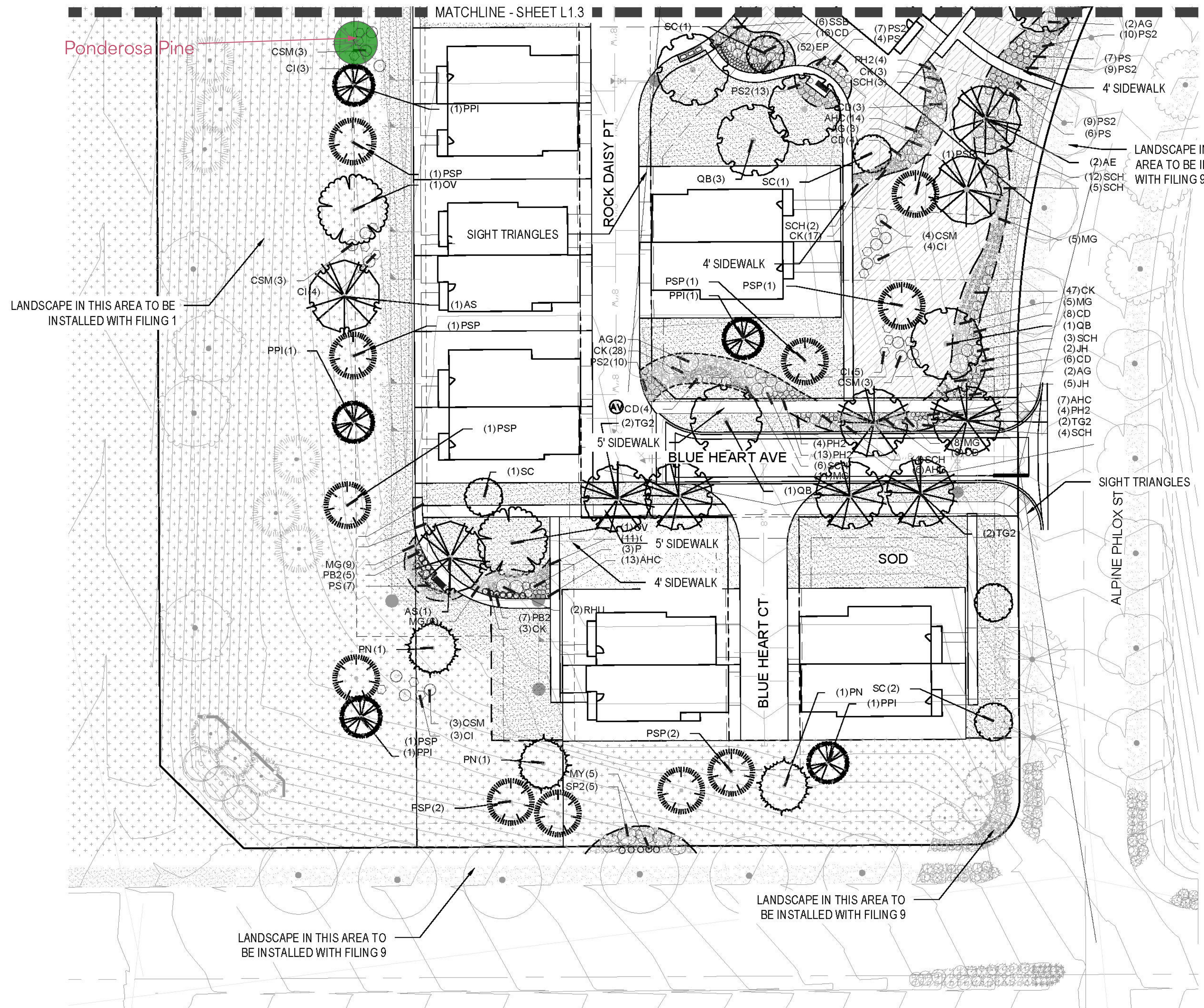


Drawn by: BEM, GG, JWD
Checked by: PGS STAFF
Submitted Date: 06.20.2018
Date: 09.26.2018
Know what's below. Call before you dig.
811
Date: 10.29.2018
Date: 06.25.2020

Sheet Name
LANDSCAPE PLAN

Sheet Number

L1.2

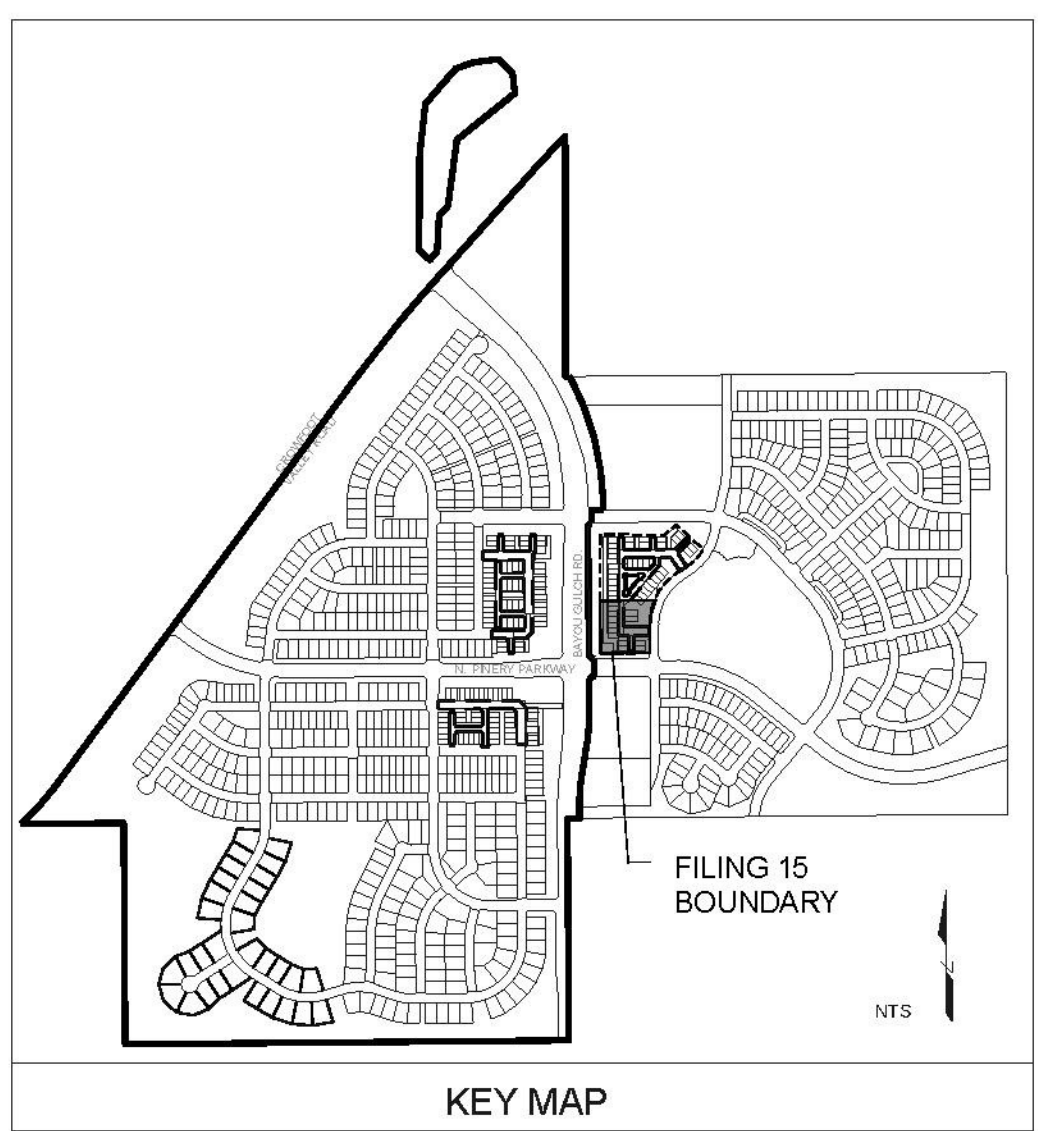


22,152 SF	ROCK MULCH TAN, 2" DIA. RIVER ROCK 3" DEPTH, RE. LDSCP NOTES	ROCK MULCH TAN, 2" DIA. RIVER ROCK	MULCH
73,360 SF	SEED MIX 1 TOWN OF PARKER - SEED MIX 1, RE. LANDSCAPE NOTES	SEED MIX 1	SEED

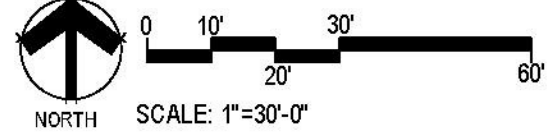
FILING 15 PLANT SCHEDULE

DECIDUOUS TREES	QTY	BOTANICAL NAME	COMMON NAME	ROOT	CALIPER/HT.
AE	14	ACER PLATANOIDES 'EMERALD QUEEN'	EMERALD QUEEN MAPLE	B & B	2.5" CAL
AS	4	ACER PLATANOIDES 'SCHWEDLERI'	SCHWEDLER MAPLE	B & B	2.5" CAL
AC	21	ACER TATARICUM 'HOT WINGS'	HOT WINGS TATARIAN MAPLE	B & B	2.5" CAL
3I	22	CELTIS OCCIDENTALIS	COMMON HACKBERRY	B & B	2.5" CAL
3S	16	GLEDITSIA TRIACANTHOS 'IMPERIAL'	IMPERIAL HONEYLOCUST	B & B	2.5" CAL
3K	5	GLEDITSIA TRIACANTHOS 'INERMIS 'SHADEMASTER' TM	SHADEMASTER LOCUST	B & B	2.5" CAL
3V	2	GYMNOCLADUS DIOICA	KENTUCKY COFFEE TREE	B & B	2.5" CAL
3O	13	OSTRYA VIRGINIANA	AMERICAN HORNBEEAM	B & B	2.5" CAL
3B	39	PLATANUS OCCIDENTALIS	AMERICAN SYCAMORE	B & B	2.5" CAL
3R	1	QUERCUS BICOLOR	SWAMP WHITE OAK	B & B	2.5" CAL
3AL	3	QUERCUS RUBRA	RED OAK	B & B	2.5" CAL
3GZ	19	TILIA AMERICANA 'REDMOND'	REDMOND AMERICAN LINDEN	B & B	2.5" CAL
3G	17	TILIA CORDATA 'GLENLEVEN'	GLENLEVEN LITTLELEAF LINDEN	B & B	2.5" CAL
		TILIA CORDATA 'GREENSPIRE'	GREENSPIRE LITTLELEAF LINDEN	B & B	2.5" CAL
EVERGREEN TREES	QTY	BOTANICAL NAME	COMMON NAME	ROOT	CALIPER/HT.
3SP	34	PINUS FLEXILIS	LIMBER PINE	B & B	6-8' HT
3N	27	PINUS NIGRA	AUSTRIAN BLACK PINE	B & B	6-8' HT
3PI	41	PINUS PONDEROSA	PONDEROSA PINE	B & B	6-8' HT
ORNAMENTAL TREES	QTY	BOTANICAL NAME	COMMON NAME	ROOT	CALIPER/HT.
4CM	9	ACER GINNALA 'COMPACTUM'	COMPACT AMUR MAPLE	B & B	2" CAL
4H	20	ACER TATARICUM 'HOT WINGS'	HOT WINGS TATARIAN MAPLE	B & B	2" CAL
4T	11	ALNUS TENUIFOLIA	THINLEAF ALDER	B & B	2" CAL
4KH	25	CRATAEGUS VIRIDIS 'WINTER KING'	'WINTER KING' HAWTHORN	B & B	2" CAL
4C	44	MALUS X 'SPRING SNOW'	SPRING SNOWCRAB APPLE	B & B	2" CAL
ORNAMENTAL GRASSES	QTY	BOTANICAL NAME	COMMON NAME	SIZE	HEIGHT/WIDTH
4CK	474	CALAMAGROSTIS X ACUTIFLORA 'KARL FOERSTER'	FEATHER REED GRASS	1 GAL	4.5' X 2'
3OG	97	HELICTOTRICHON SEMPERVIRENS	BLUE OAT GRASS	1 GAL	3' X 2'
4G	169	MISCANTHUS SINENSIS 'GRACILLIMUS'	MAIDEN GRASS	1 GAL	4' X 5'
4Y	89	MISCANTHUS SINENSIS 'YAKU JIMA'	'YAKU JIMA' DWARF MAIDEN GRASS	1 GAL	3' X 3'
4H	14	PANICUM VIRGATUM 'HEAVY METAL'	BLUE SWITCH GRASS	1 GAL	5' X 3'
4H2	25	PENNISETUM ALOPECUROIDES 'HA MELN'	HA MELN DWARF FOUNTAIN GRASS	5 GAL	
4B2	12	PENNISETUM ALOPECUROIDES 'LITTLE BUNNY'	LITTLE BUNNY FOUNTAIN GRASS	1 GAL	1' X 2'
ANNUALS/PERENNIALS	QTY	BOTANICAL NAME	COMMON NAME	SIZE	HEIGHT/WIDTH
4HC	57	AGASTACHE X 'CORANADO RED'	ANISE HYSSOP	1 GAL	2.5' X 3'
4P	224	ECHINACEA PURPUREA	PURPLE CONEFLOWER	1 GAL	2' X 2'
4ES	141	RUDBECKIA FULGIDA SULLIVANTII 'GOLDSTURM'	BLACK-EYED SUSAN	1 GAL	1.5' X 1.5'
4P	59	SCABIOSA CAUCASICA 'PERFECTA BLUE'	PINCUSHION FLOWER	1 GAL	2.5' X 1.5'
DECIDUOUS SHRUBS	QTY	BOTANICAL NAME	COMMON NAME	SIZE	HEIGHT/WIDTH
4SSB	9	AMELANCHIER ALNIFOLIA 'REGENT'	SASKATOON SERVICEBERRY	5 GAL	12' X 8'
4G	34	AMELANCHIER X GRANDIFLORA 'AUTUMN BRILLIANCE'	'AUTUMN BRILLIANCE' SERVICEBERRY	5 GAL	15' X 10'
4D	159	CARYOPTERIS X CLANDONENSIS 'DARK KNIGHT'	BLUE MIST SHRUB	5 GAL	3' X 4'
4I	148	CERCOCARPUS INTRICATUS	LITTLE LEAF MOUNTAIN MAHOGANY	5 GAL	5' X 5'
4B	21	CORNUS SERICEA 'BAILEY'	RED TWIG DOGWOOD	5 GAL	8' X 8'
4D2	6	COTONEASTER DIVARICATUS	SPREADING COTONEASTER	5 GAL	6' X 6'
4H	21	COTONEASTER HORIZONTALIS	ROCK COTONEASTER	5 GAL	3' X 5'
4P2	134	PENSTEMON STRICTUS	ROCKY MOUNTAIN PENSTEMON	5 GAL	2' X 3'
4J	5	POTENTILLA FRUTICOSA 'JACKMANII'	JACKMAN'S POTENTILLA	5 GAL	3' X 4'
4SCH	59	PRUNUS BESSEYI 'PAWNEE BUTTES'	'PAWNEE BUTTES' SAND CHERRY	5 GAL	18" X 6"
4HU	20	RHUS AROMATICA 'GRO-LOW'	GRO-LOW FRAGRANT SUMAC	5 GAL	3' X 6"
4T	5	RHUS TRILOBATA	THREE LEAF SUMAC	5 GAL	4' X 5'
4G	7	RIBES AUREUM	GOLDEN CURRANT	5 GAL	4' X 6"
4P2	5	SALIX PURPUREA 'NANA'	DWARF ARCTIC WILLOW	5 GAL	8' X 8"
EVERGREEN SHRUBS	QTY	BOTANICAL NAME	COMMON NAME	SIZE	HEIGHT/WIDTH
4C	15	ARCTOSTAPHYLOS X COLORADOENSIS 'CHIEFTAIN'	MANZANITA	5 GAL	2' X 5'
4P	4	ARCTOSTAPHYLOS X COLORADOENSIS 'PANCHITO'	PANCHITO MANZANITA	5 GAL	1.5' X 5'
4SM	112	CYTISUS SCOPARIUS 'MOONLIGHT'	'MOONLIGHT' BROOM	5 GAL	3' X 5'
4C	32	EUONYMUS FORTUNEI 'COLORATA'	PURPLE LEAF WINTER CREEPER	5 GAL	2' X 5'
4B	19	JUNIPERUS HORIZONTALIS 'BLUE CHIP'	BLUE CHIP JUNIPER	5 GAL	8" X 10"
4H	28	JUNIPERUS HORIZONTALIS 'HUGHES'	HUGHES JUNIPER	5 GAL	1.5' X 6"

- NOTES:
- LANDSCAPE MATERIAL AND TREES IN TREE LAWNS ADJACENT TO LOTS ARE RESPONSIBILITY OF HOME BUILDER. STREET TREE LOCATIONS ARE NOT FINAL AND MAY CHANGE BASED UPON DRIVEWAY LOCATION.
 - NO FENCES OR STRUCTURES WILL BE ALLOWED WITHIN SIGHT TRIANGLES.
 - SHRUBS & PERENNIALS WITHIN SIGHT TRIANGLES WILL BE NO HIGHER THAN 2'.
 - MAILBOX CLUSTER LOCATIONS ARE CONCEPTUAL ONLY. FINAL LOCATIONS TO BE DETERMINED BY POSTMASTER.
 - ALL FENCING TO BE INSTALLED AS PART OF FILING 1 OR 9.



1 LANDSCAPE PLAN-FILING 15
SCALE: 1"=30'-0"



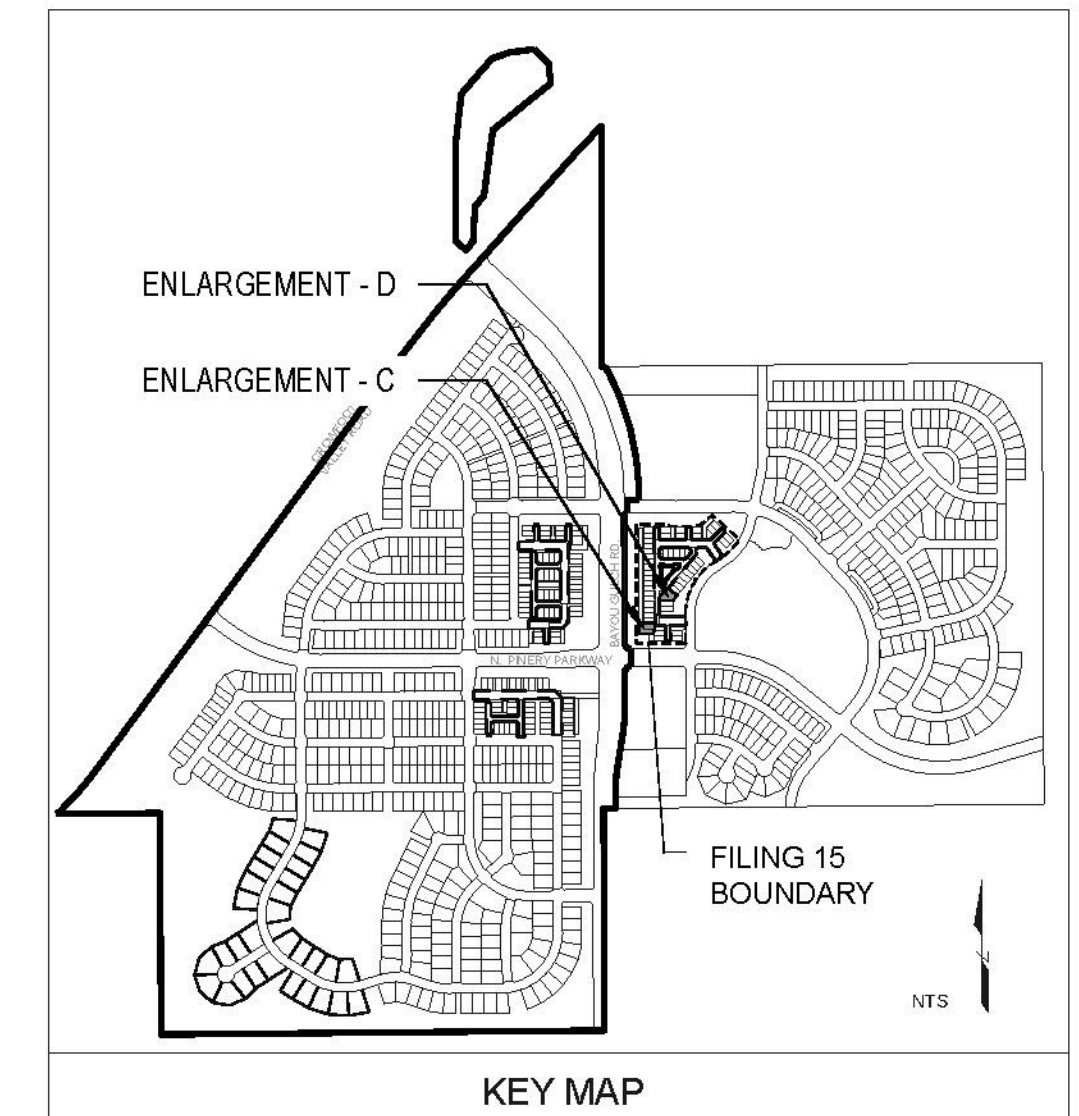
Y:\HESSE PANCHLANDSCAPE ARCHITECTURE\CURRENT DWGS\HESSE-LDSCP PLANS - FILING-15_CDS.DWG
Saturday, June 23, 2018



GRADING KEYNOTES:

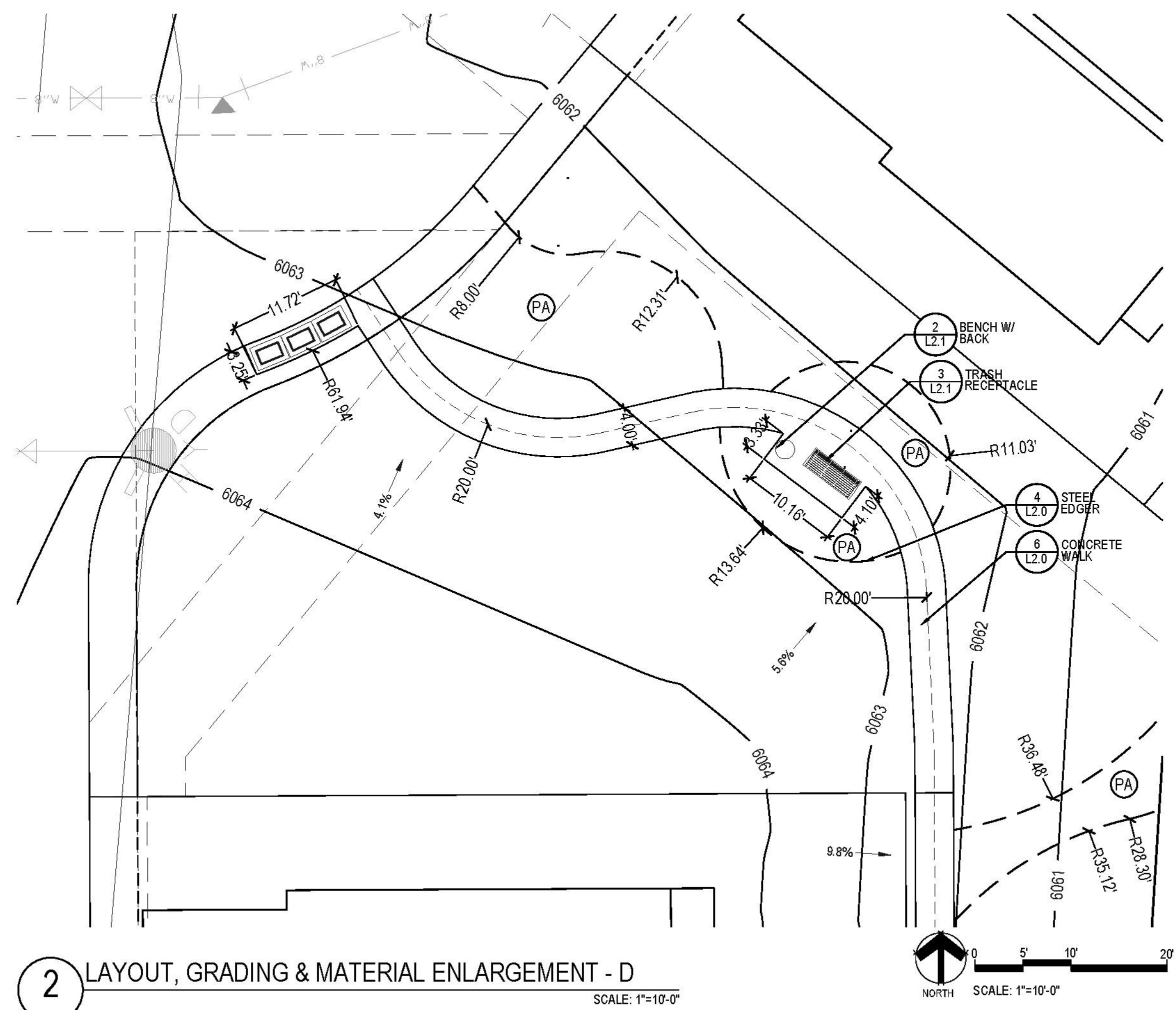
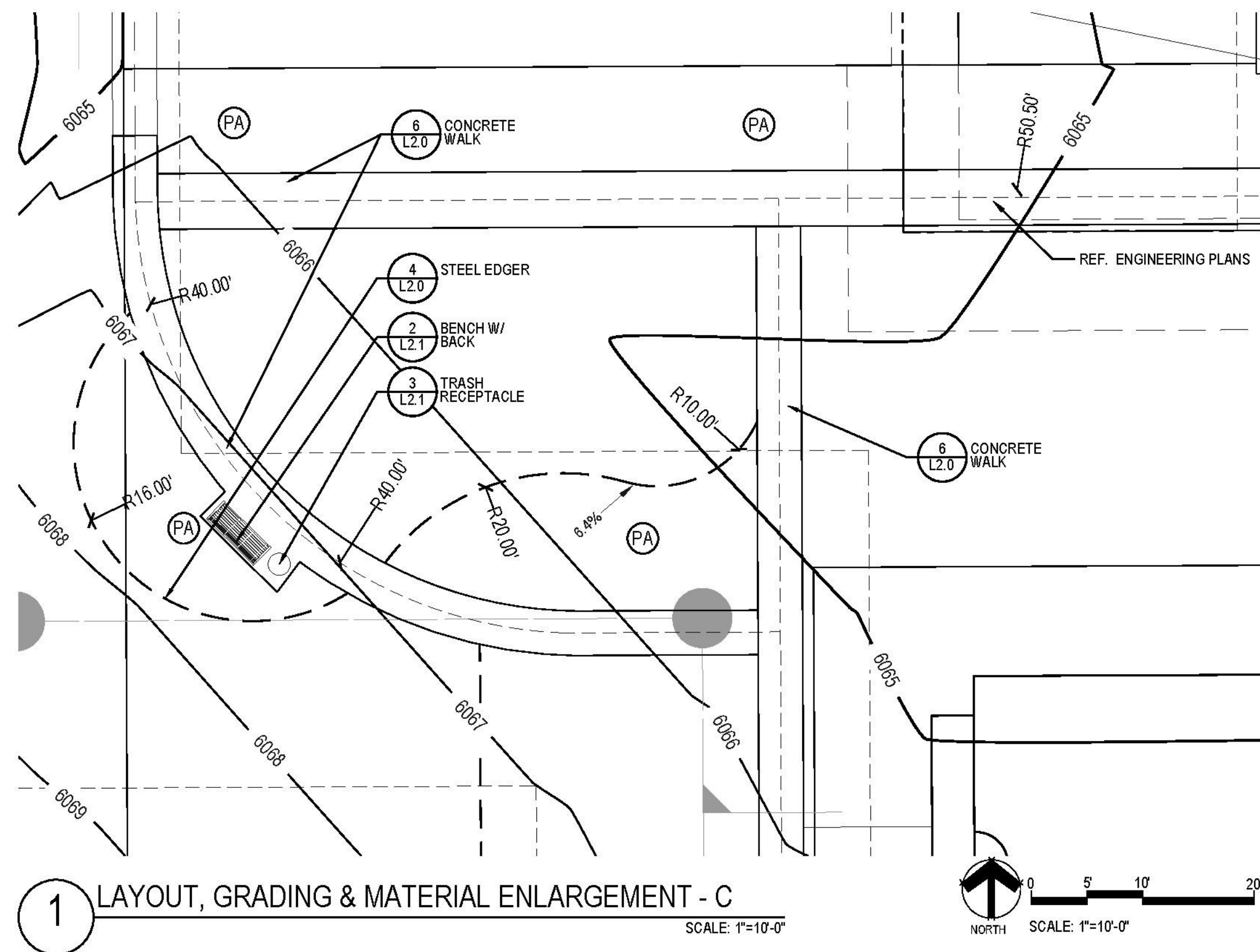
LEGEND

- PLANTING AREA
- PROPOSED CONTOUR - MAJOR
- PROPOSED CONTOUR - MINOR
- HP HIGH POINT



LAYOUT NOTES

1. REFER TO CIVIL ENGINEER DRAWINGS/DATA SETS FOR PROJECT BENCHMARK AND BASIS OF BEARING.
2. SITE LAYOUT DATA INCLUDING COORDINATE POINTS ARE DERIVED FROM CIVIL ENGINEERING CONSULTANT. CONTACT CIVIL ENGINEER REGARDING ANY DISCREPANCIES OR CLARIFICATIONS REGARDING COORDINATE SYSTEMS, SURVEY MARKERS OR OTHER HORIZONTAL CONTROL DATA.
3. UNLESS OTHERWISE NOTED, DIMENSIONS ARE TO THE FOLLOWING: CENTERLINES, EDGE OF PAVING, CENTERS OF COLUMNS/POSTS.
4. ALL EDGES OF PAVEMENT ARE TO BE STRAIGHT OR OF CONSISTENT RADIUS, IN THE CASE OF CURVES, AS SHOWN HEREON. NO UNSPECIFIED TANGENTS OR KINKS WILL BE APPROVED.
5. ALL CONSTRUCTION LAYOUT STAKING IS TO BE PERFORMED BY A LAND SURVEYOR OR PROFESSIONAL ENGINEER REGISTERED IN THE STATE OF COLORADO, TO FACILITATE ACCURACY IN CONSTRUCTION STAKING. UPON WRITTEN REQUEST FROM CONTRACTOR, A CD CONTAINING THE ELECTRONIC DATA COMPRISING THESE SITE DEVELOPMENT DRAWINGS WILL BE FORWARDED FROM THE LANDSCAPE ARCHITECT TO THE LAND SURVEYOR OR PROFESSIONAL ENGINEER EMPLOYED TO PERFORM CONSTRUCTION STAKING.
6. IN ORDER TO MAINTAIN THE INTEGRITY OF THE HORIZONTAL AND VERTICAL CONTROL FOR THE SITE, THE SURVEYOR OR PROFESSIONAL ENGINEER EMPLOYED BY THE CONTRACTOR TO PERFORM CONSTRUCTION LAYOUT STAKING SHALL SET AND PROTECT ADDITIONAL TRAVERSE POINTS OUTSIDE THE AREAS OF CONSTRUCTION ACTIVITY.



Y:\HSS_PANCHA_LANDSCAPE_ARCHITECTURE\CURRENT DWGS\HSS-LDSCP PLANS - FILING-15_CDS.DWG
Saturday, June 23, 2018

TRAILS AT CROWFOOT FILING 15 LANDSCAPE PLANS

PARKER, COLORADO

Drawn by:	BEM, GG, JWD
Checked by:	FGS STAFF
Submittal Date:	05.20.2018
	09.26.2018
	10.29.2018
	06.25.2020

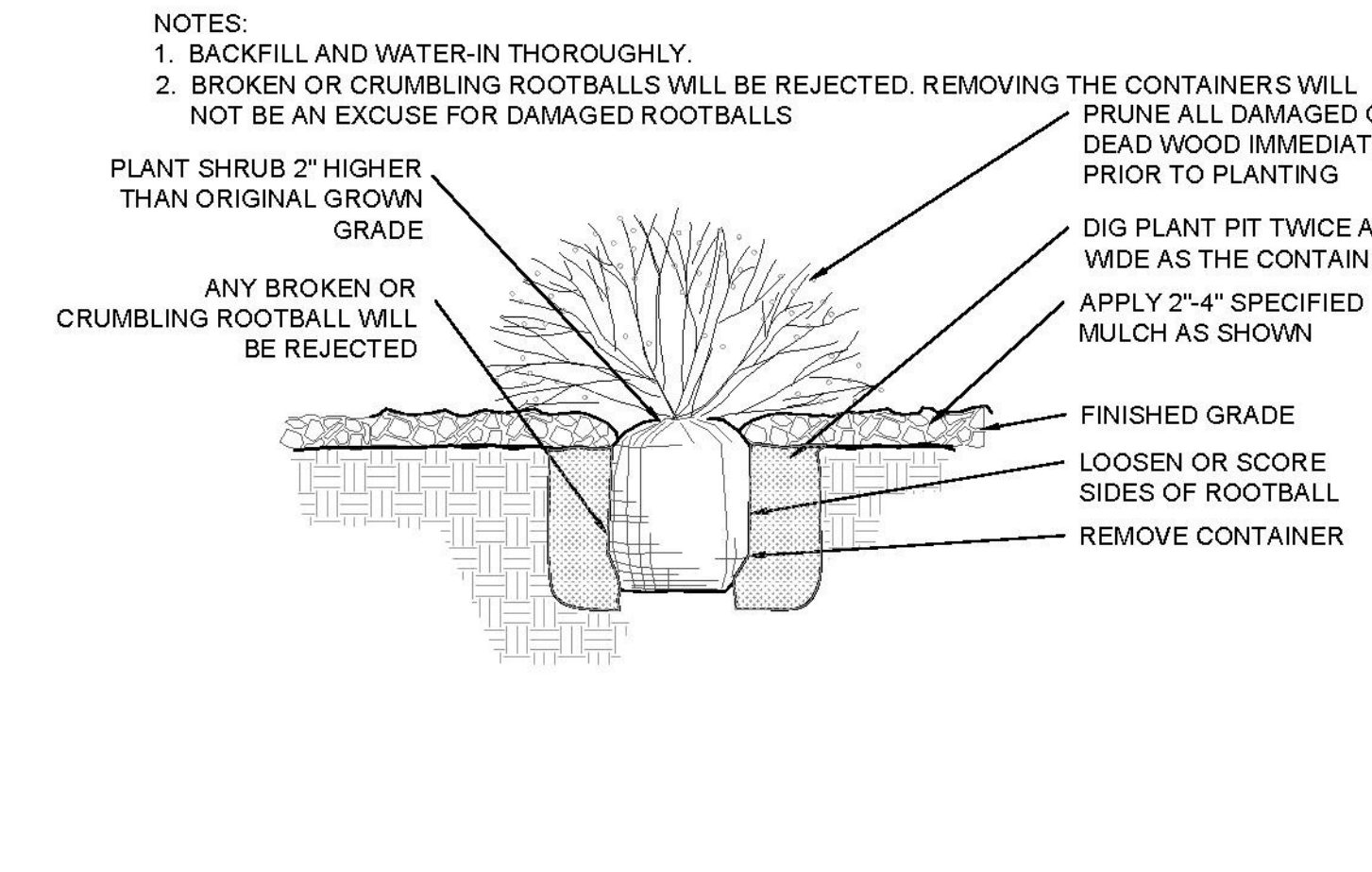
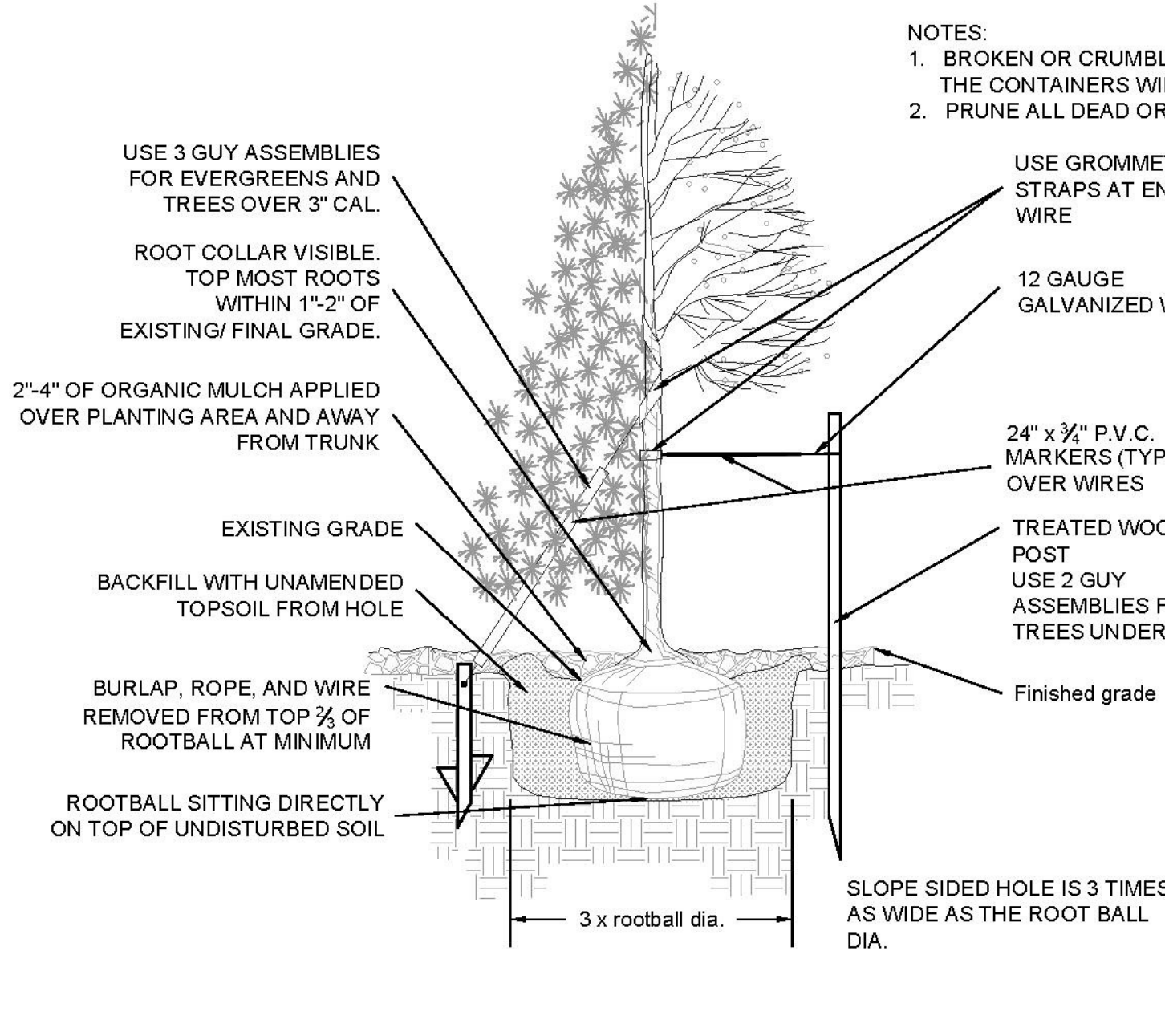
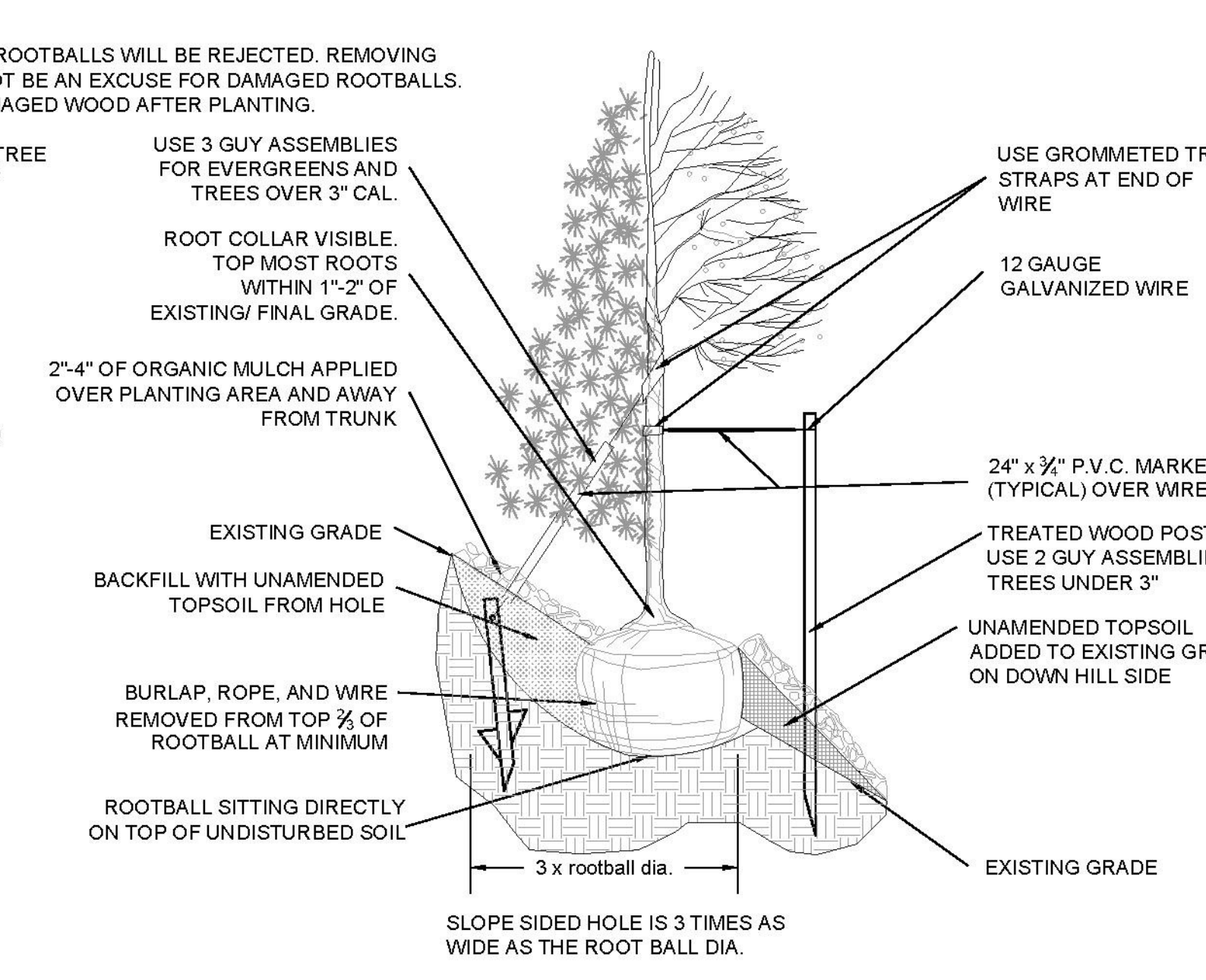
Sheet Name
LAYOUT, GRADING & MATERIAL ENLARGEMENTS

Sheet Number

L1.4

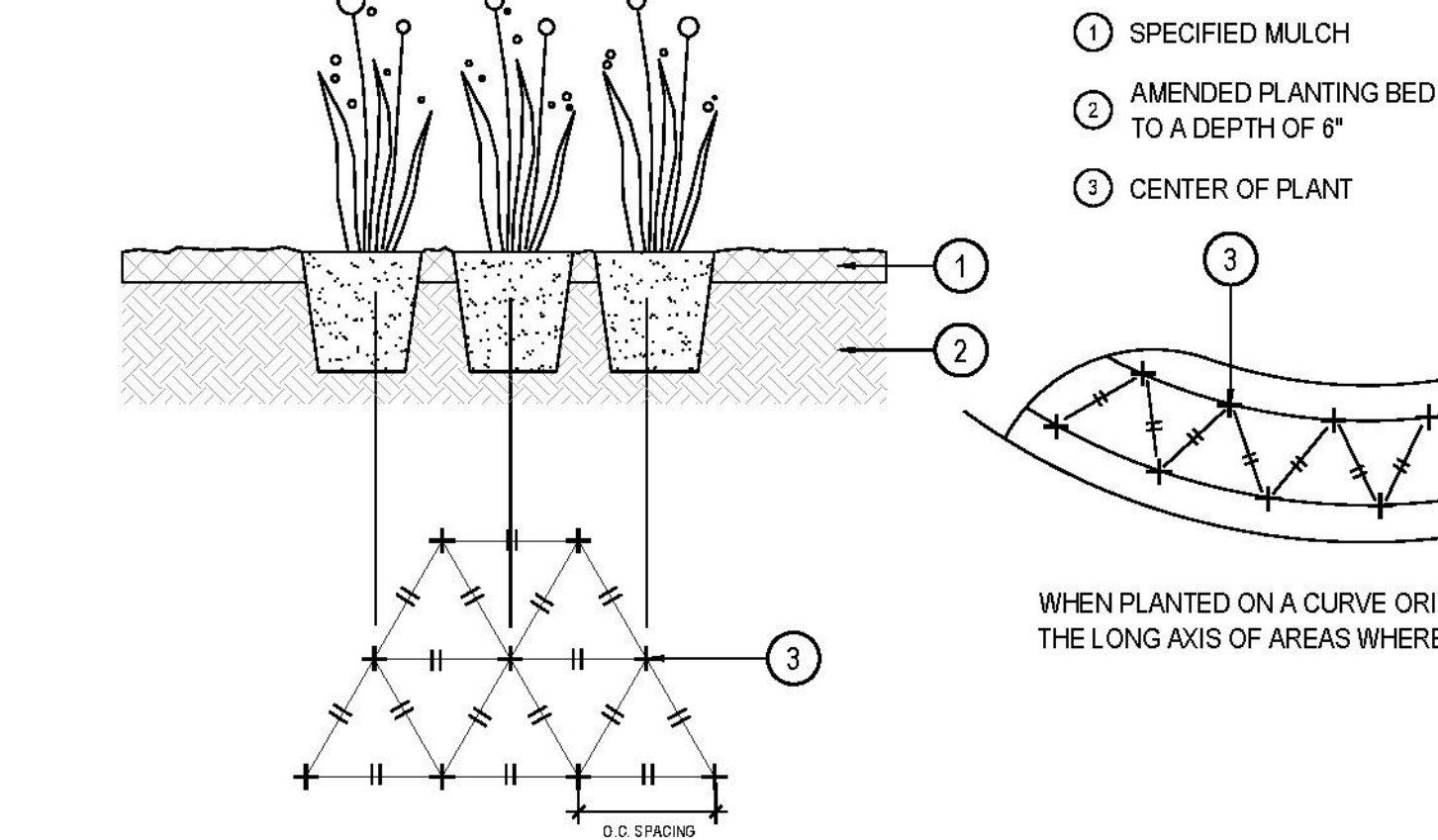
NOTES:

- ALL WORK TO BE DONE AT TIME OF PLANTING
- PEEL BACK ONLY TOP OF BURLAP REQUIRED TO PERFORM WORK. REPLACE BURLAP BEFORE MOVING TREE INTO PLANTING PIT. DO NOT REMOVE WIRE BASKET UNTIL INSIDE PLANTING PIT.
- MEASURE NEW HEIGHT OF ROOTBALL AND DIG PLANTING PIT SO FINAL TOP ROOTBALL GRADE IS 3" ABOVE FINAL GRADE SURROUNDING BALL.
- EXCAVATE PLANTING HOLES WITH SLOPING SIDES. MAKE EXCAVATIONS AT LEAST THREE TIMES AS WIDE AS THE ROOT BALL DIAMETER AND NO DEEPER THAN THE DISTANCE FROM THE TOP MOST ROOTS IN THE ROOT BALL TO THE BOTTOM OF THE ROOT BALL TO ALLOW FOR SETTLING. DO NOT DISTURB SOIL AT BOTTOM OF PLANTING HOLES, BUT DO SCORE THE SIDES OF THE PLANTING HOLE. THE PLANTING AREA SHALL BE LOOSENEED AND AERATED AT LEAST THREE TIMES THE DIAMETER OF THE ROOT BALL. BACKFILL SHALL CONSIST OF EXISTING SITE TOPSOIL - NO AMENDMENTS SHALL BE USED UNLESS OTHERWISE SPECIFIED.
- TREES SHALL BE PLANTED WITH THE ROOT COLLAR/FLARE VISIBLE ABOVE GRADE AND TWO OR MORE STRUCTURAL ROOTS LOCATED WITHIN THE TOP 1" TO 2" OF THE ROOT BALL/FINISHED GRADE MEASURED 3" TO 4" FROM TRUNK. THIS INCLUDES TREES THAT ARE SET ON SLOPES (SEE SLOPE PLANTING DETAIL). TREES THAT DO NOT HAVE A VISIBLE ROOT COLLAR SHALL BE REJECTED. DO NOT COVER THE ROOT BALL WITH SOIL.
- WHEN ROOT BALL WILL REMAIN INTACT, CUT OFF BOTTOM 1/4 OF WIRE BASKET BEFORE PLACING TREE IN HOLE. CUT OFF REMAINDER OF BASKET AFTER TREE IS SET IN HOLE. REMOVE BASKET COMPLETELY. AT A MINIMUM, THE TOP 1/2 OF THE BURLAP AND BASKET SHALL BE REMOVED FROM THE ROOT BALL ON ALL TREES. REMOVE ALL NYLON TIES, TWINE, ROPE AND BURLAP. REMOVE UNNECESSARY PACKING MATERIAL. FORM SOIL INTO A 3" TO 5" TALL WATERING RING (SAUCER) AROUND PLANTING AREA. THIS IS NOT NECESSARY IN IRRIGATED TURF AREAS. APPLY 2" TO 4" DEPTH OF SPECIFIED MULCH OVER PLANTING AREA AND INSIDE SAUCERS, AWAY FROM TRUNK. STAKING AND GUYING OF TREES IS OPTIONAL IN MOST PLANTING SITUATIONS. IN AREAS OF EXTREME WINDS OR ON STEEP SLOPES, STAKING MAY BE REQUIRED TO STABILIZE TREES. STAKING AND GUYING MUST BE REMOVED WITHIN 1 YEAR OF PLANTING DATE.
- TREE WRAP IS NOT TO BE USED ON ANY NEW PLANTINGS, EXCEPT IN LATE FALL PLANTING SITUATIONS AND ONLY THEN AFTER CONSULTATION WITH THE TOWN ARBORIST.
- RESETTING OF IMPROPERLY PLANTED TREES WILL ONLY BE ALLOWED IF IT IS DETERMINED THAT DOING SO WILL IN NO WAY COMPROMISE THE ROOT BALL, AND SHALL ONLY BE DONE WITH APPROVAL OF THE TOWN ARBORIST.



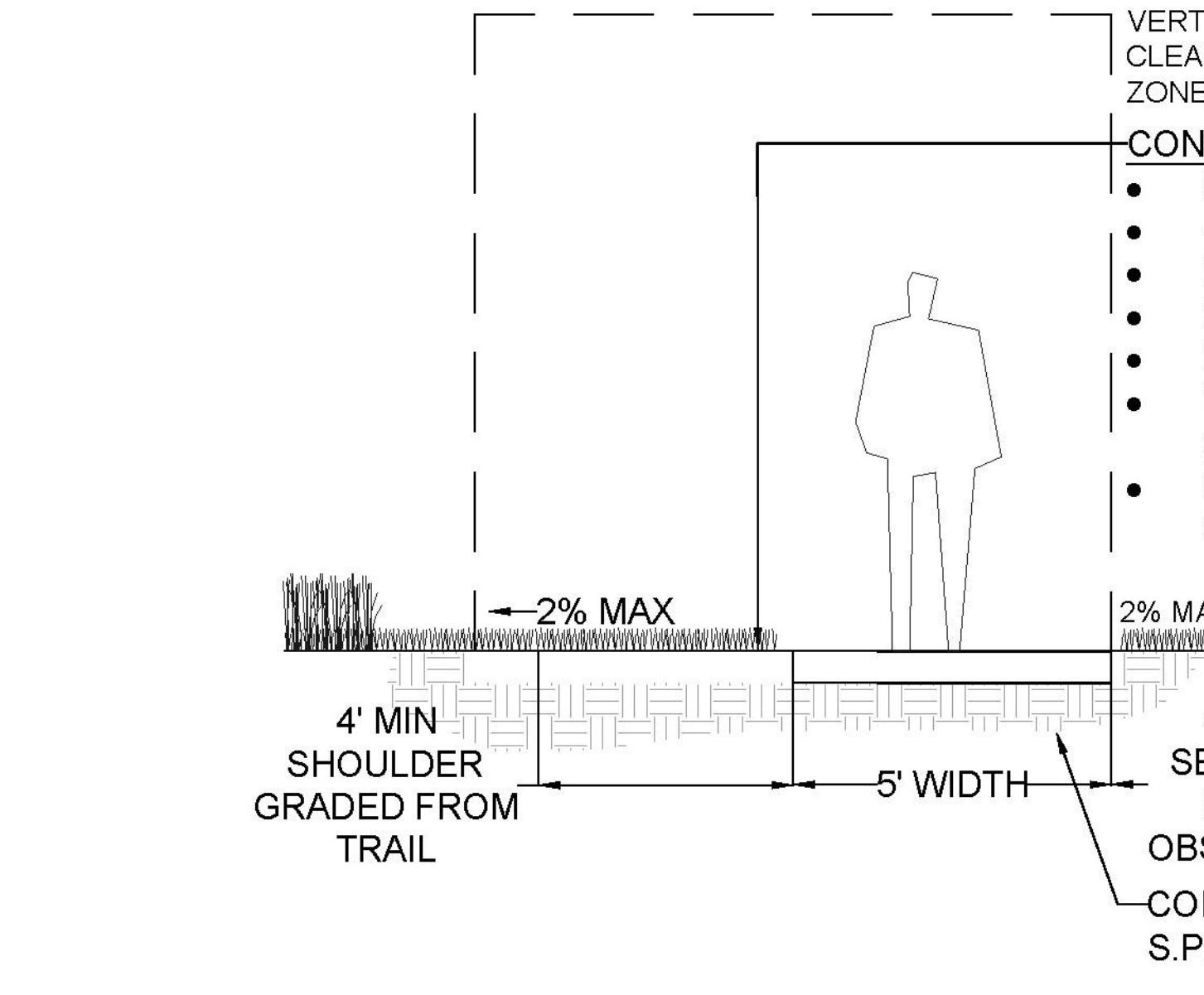
1 SHRUB PLANTING NOT TO SCALE

2 TREE PLANTING NOT TO SCALE

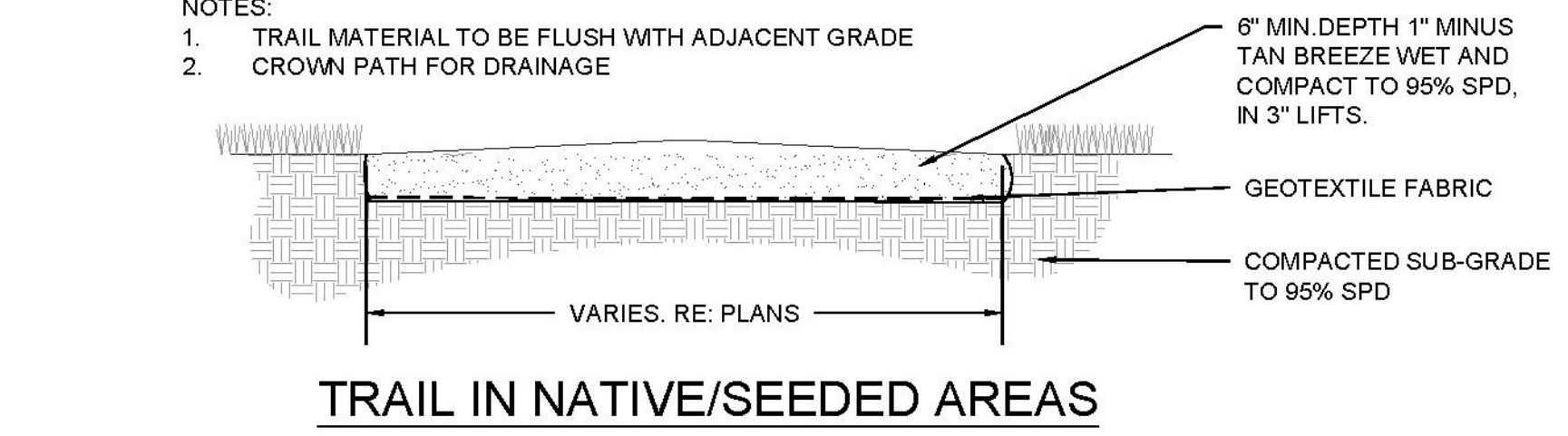


4 STEEL EDGER NOT TO SCALE

3 PERENNIAL OR GRASS PLANTING NOT TO SCALE

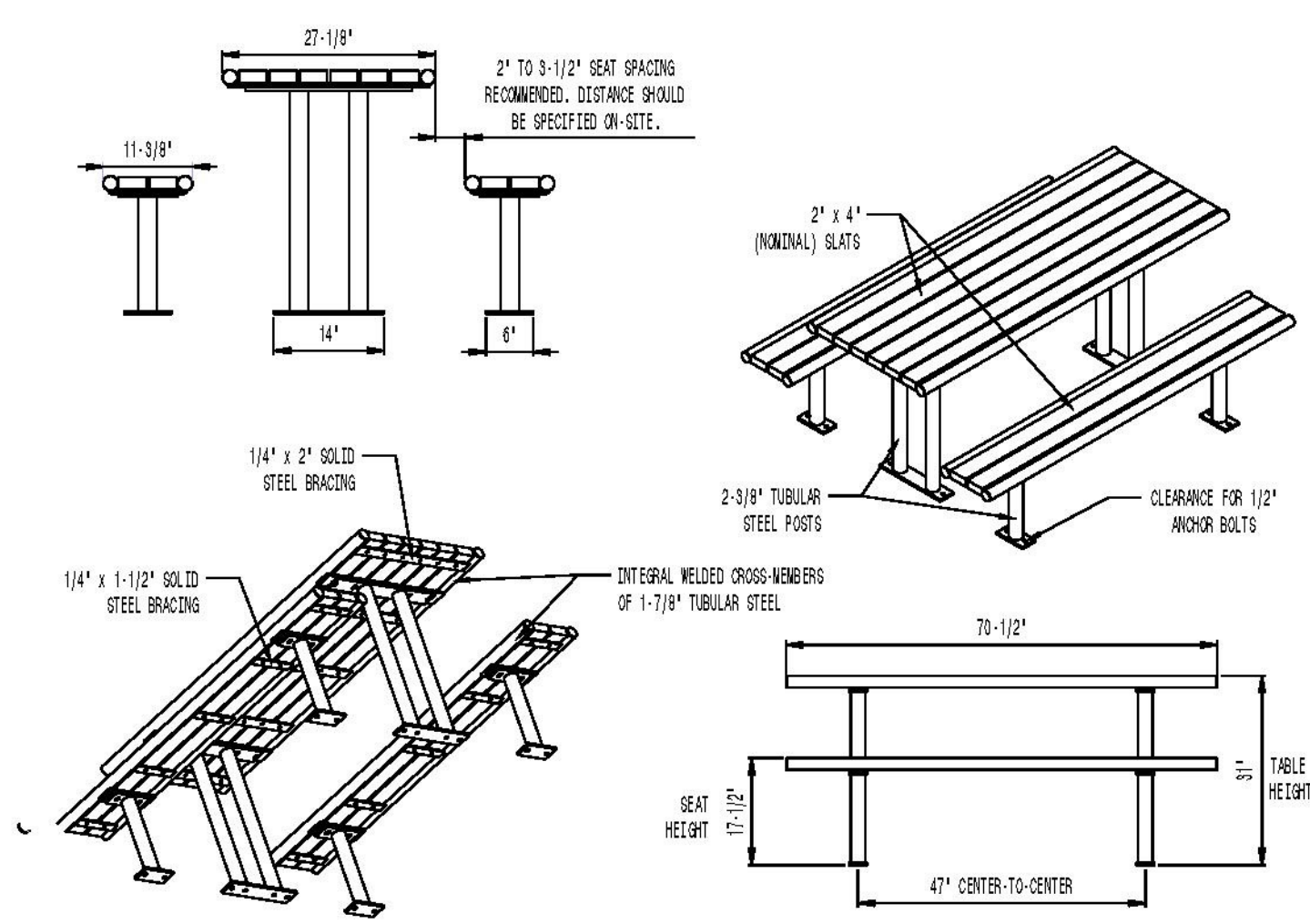


6 CONCRETE WALK NOT TO SCALE



5 CRUSHER FINES WALK NOT TO SCALE

Y:\HESSE_RANCH\LANDSCAPE_ARCHITECTURE\CURRENT DWGS\HESSE-LDSCP_PLANS - FILING-15_CDS.DWG
Saturday, June 23, 2018



AVAILABLE OPTIONS:
POWDER COATING:
 10 STANDARD COLORS, 2 OPTIONAL METALLIC COLORS, CUSTOM COLORS (INCLUDING THE RAL RANGE)
SLAT TYPES:
 RECYCLED PLASTIC SLATS (NOT 2ND STEEL SYSTEM)
 COLORS: GRAY, WALNUT, CHERRY, AND WALNUT
 SEE THE STREET/STREET SIDE/SEEK FOR ADDITIONAL SLAT OPTIONS

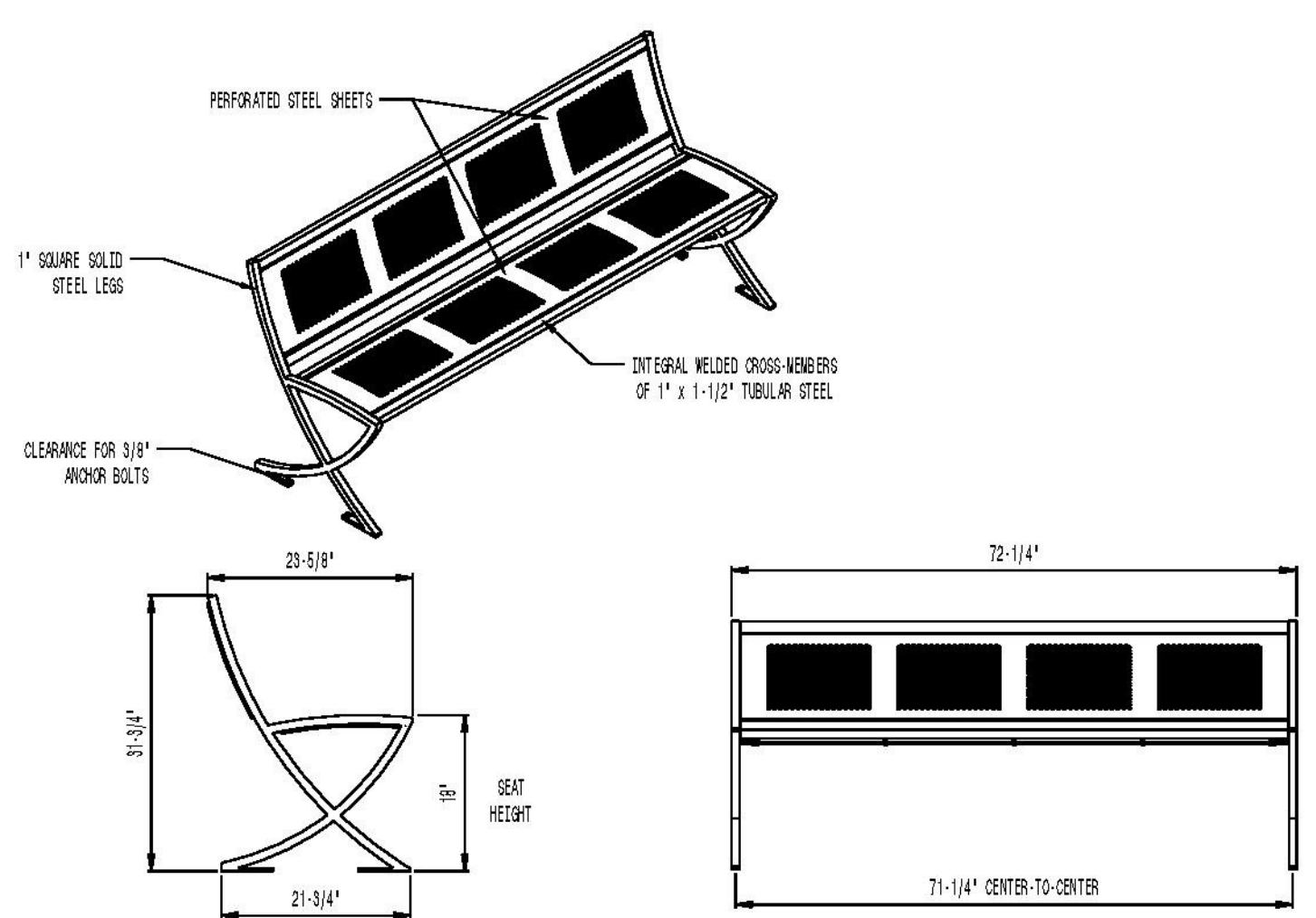
NOTES:
 1. DRAWINGS NOT TO SCALE. DO NOT SCALE DRAWINGS.
 2. ALL FABRICATED METAL COMPONENTS ARE STEEL (HOT-DIP GALVANIZED, ETCHED, PHOSPHATIZED, PREHEATED, AND ELECTROSTATICALLY POWDER-COATED WITH T.S.I.C. POLYESTER POWDER COATINGS. PRODUCTS ARE FULLY CLEANED AND PRETREATED, PREHEATED AND COATED WHILE HOT TO FILL CREVICES AND BUILD COATING FILM. COATED PARTS ARE THEN FULLY CURED TO COATING MANUFACTURER'S SPECIFICATIONS. THE THICKNESS OF THE RESULTING FINISH AVERAGES 8-10 MILS (200-250 MICRONS).
 3. IT IS NOT RECOMMENDED TO LOCATE ANCHOR BOLTS UNTIL TABLES AND BENCHES ARE IN PLACE. THIS VECTOR STANLEY, INC. PRODUCT MUST BE PERMANENTLY AFFIXED TO THE GROUND. CONSULT YOUR LOCAL CODES FOR REGULATIONS.
 4. ANCHOR BOLTS NOT PROVIDED BY VECTOR STANLEY, INC.
 5. FOR HIGH SALT ABUSIVE CLIMATES, HOT-DIP GALVANIZING BEFORE POWDER COATING IS AVAILABLE. SEE WRITTEN SPECIFICATIONS FOR DETAILS.
 6. ALL SPECIFICATIONS ARE SUBJECT TO CHANGE. CONTACT MANUFACTURER FOR DETAILS.
 7. THIS PRODUCT IS SHIPPED PARTIALLY UNASSEMBLED.

MOUNTING:
 STANDARD SURFACE (AS SHOWN) AND IN-GROUND
 AVAILABLE WITH ADA COMPLIANT LEG POSITIONING
 ADA COMPLIANT TABLE/BENCH CONFIGURATION: 8' TABLE WITH 4' BENCHES

LENGTHS:
 STANDARD 4' LENGTH SHOWN
 STANDARD 8'

MODEL: CM-56 SERIES (6' LENGTH)
MANUFACTURER: VICTOR STANLEY, INC.
AS SUPPLIED BY DOWNS & ASSOCIATES
CONTACT:
MELANIE POLANCO
P: 303-744-0399

1 PICNIC TABLE NOT TO SCALE

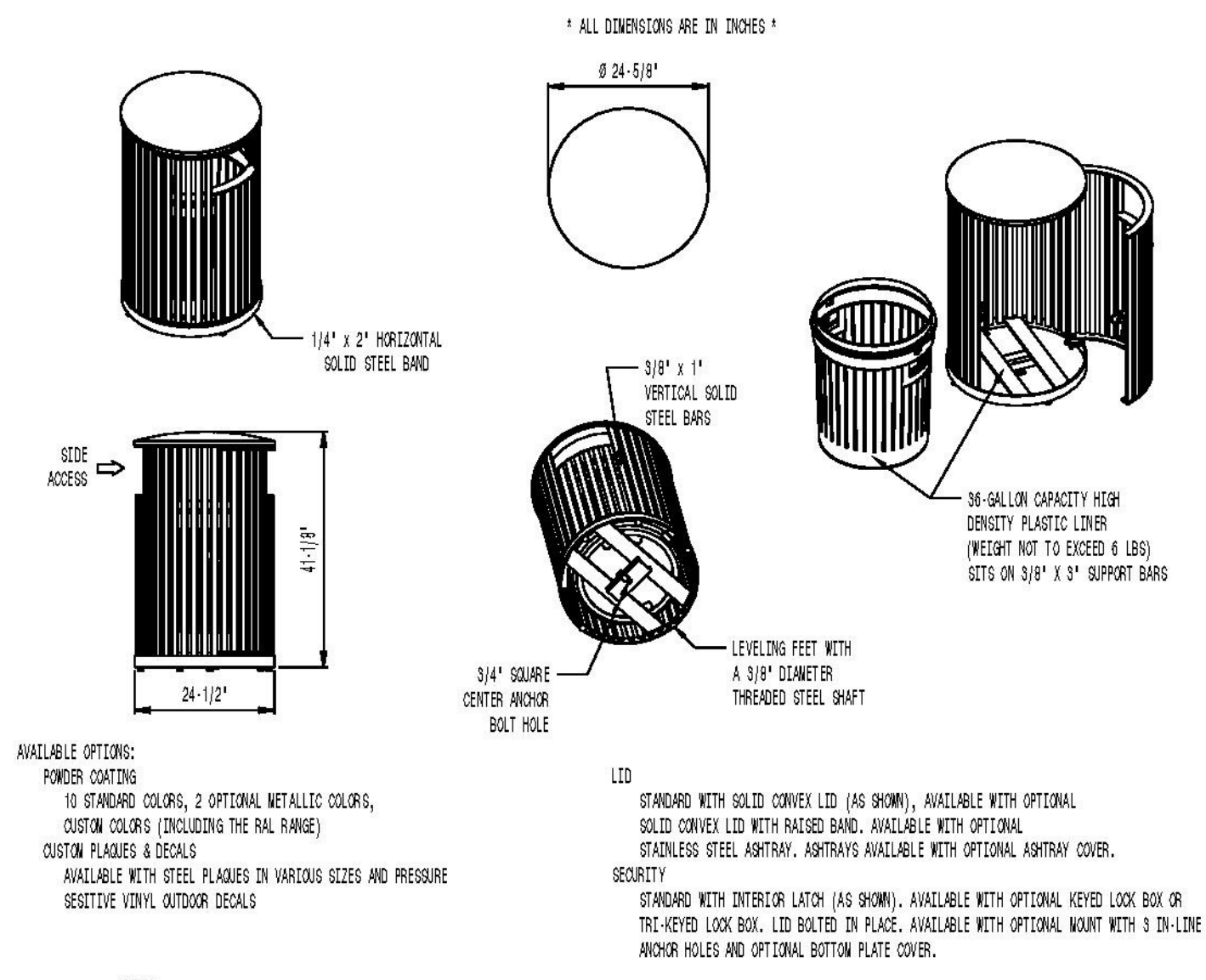


AVAILABLE OPTIONS:
POWDER COATING:
 10 STANDARD COLORS, 2 OPTIONAL METALLIC COLORS, CUSTOM COLORS (INCLUDING THE RAL RANGE)

NOTES:
 1. DRAWINGS NOT TO SCALE. DO NOT SCALE DRAWINGS.
 2. ALL FABRICATED METAL COMPONENTS ARE STEEL (HOT-DIP GALVANIZED, ETCHED, PHOSPHATIZED, PREHEATED, AND ELECTROSTATICALLY POWDER-COATED WITH T.S.I.C. POLYESTER POWDER COATINGS. PRODUCTS ARE FULLY CLEANED AND PRETREATED, PREHEATED AND COATED WHILE HOT TO FILL CREVICES AND BUILD COATING FILM. COATED PARTS ARE THEN FULLY CURED TO COATING MANUFACTURER'S SPECIFICATIONS. THE THICKNESS OF THE RESULTING FINISH AVERAGES 8-10 MILS (200-250 MICRONS).
 3. IT IS NOT RECOMMENDED TO LOCATE ANCHOR BOLTS UNTIL BENCH IS IN PLACE. THIS VECTOR STANLEY, INC. PRODUCT MUST BE PERMANENTLY AFFIXED TO THE GROUND. CONSULT YOUR LOCAL CODES FOR REGULATIONS.
 4. ANCHOR BOLTS NOT PROVIDED BY VECTOR STANLEY, INC.
 5. FOR HIGH SALT ABUSIVE CLIMATES, HOT-DIP GALVANIZING BEFORE POWDER COATING IS AVAILABLE. HOT-DIP GALVANIZING IS PERFORMED FOR VECTOR STANLEY, INC. BY AN EXPERIENCED QUALIFIED FIRM TO WHICH PRODUCTS ARE SHIPPED FOR GALVANIZING. HOT-DIP GALVANIZING INCLUDES AN AGGRESSIVE PRE-TREATMENT AND IMMERSION IN A TANK OF CHANGED LIQUID ZINC AT OR AROUND 800°F (426°C). THE RESULTING SURFACE IS RESISTANT TO RUST BUT HAS SOME UNEVENNESS RESULTING FROM THE BONDING OF THE ZINC TO THE STEEL SURFACE. AS A RESULT, THE POWDER-COATING SURFACE FINISH OVER THAT GALVANIZED SURFACE MAY EXHIBIT BUMPS, UNEVENNESS, AND MAY NOT BE AS SMOOTH AS THE STANDARD FINISH; THIS UNEVEN AND INCONSISTENT FINISH IS NORMAL FOR GALVANIZING. CONTACT MANUFACTURER FOR DETAILS.
 6. ALL SPECIFICATIONS ARE SUBJECT TO CHANGE. CONTACT MANUFACTURER FOR DETAILS.
 7. THIS PRODUCT IS SHIPPED PARTIALLY UNASSEMBLED.

MODEL: LILY BENCH LIL-20NA-P (6' LENGTH)
MANUFACTURER: VICTOR STANLEY, INC.
AS SUPPLIED BY DOWNS & ASSOCIATES
CONTACT:
MELANIE POLANCO
P: 303-744-0399

2 BENCH W/ BACK NOT TO SCALE



AVAILABLE OPTIONS:
POWDER COATING:
 10 STANDARD COLORS, 2 OPTIONAL METALLIC COLORS, CUSTOM COLORS (INCLUDING THE RAL RANGE)
 CUSTOM PLAKES & DECALS
 AVAILABLE WITH STEEL PLAKES IN VARIOUS SIZES AND PRESSURE SENSITIVE VINYL OUTDOOR DECALS

NOTES:
 1. DRAWINGS NOT TO SCALE. DO NOT SCALE DRAWINGS.
 2. ALL FABRICATED METAL COMPONENTS ARE STEEL (HOT-DIP GALVANIZED, ETCHED, PHOSPHATIZED, PREHEATED, AND ELECTROSTATICALLY POWDER-COATED WITH T.S.I.C. POLYESTER POWDER COATINGS. PRODUCTS ARE FULLY CLEANED AND PRETREATED, PREHEATED AND COATED WHILE HOT TO FILL CREVICES AND BUILD COATING FILM. COATED PARTS ARE THEN FULLY CURED TO COATING MANUFACTURER'S SPECIFICATIONS. THE THICKNESS OF THE RESULTING FINISH AVERAGES 8-10 MILS (200-250 MICRONS).
 3. ALL DIMENSIONED BRIDGE BOLTS AND STAINLESS STEEL PIVOT PINS FOR DOOR MOUNTING, STANDARD 3/16" SOLID STEEL LATCH ASSEMBLY OR OPTIONAL PATENTED STAINLESS STEEL KEYS LOCK ASSEMBLY.
 4. THIS VECTOR STANLEY, INC. PRODUCT MUST BE PERMANENTLY AFFIXED TO THE GROUND. CONSULT YOUR LOCAL CODES FOR REGULATIONS.
 5. VECTOR STANLEY, INC., PLASTIC LINER LINERS ARE WELDED ON TOOLING DESIGNED FOR AND OWNED BY VECTOR STANLEY, INC. THEY OFFER MAXIMUM CAPACITY AND STRENGTH WITH LIGHTWEIGHT CONSTRUCTION USING CRITICAL WELDED JOINTS, INTEGRAL HANDHOLDS, AND HIGH-STRENGTH MATERIALS. THIS DESIGN EASES HANDLING DIFFICULTY AND FACILITATES EASY EMPTYING AND STORAGE WHILE APPROXIMATING LONG SERVICE LIFE.
 6. ANCHOR BOLT NOT PROVIDED BY VECTOR STANLEY, INC.
 7. FOR HIGH SALT ABUSIVE CLIMATES, HOT-DIP GALVANIZING BEFORE POWDER COATING IS AVAILABLE. HOT-DIP GALVANIZING IS PERFORMED FOR VECTOR STANLEY, INC. BY AN EXPERIENCED QUALIFIED FIRM TO WHICH PRODUCTS ARE SHIPPED FOR GALVANIZING. HOT-DIP GALVANIZING INCLUDES AN AGGRESSIVE PRE-TREATMENT AND IMMERSION IN A TANK OF CHANGED LIQUID ZINC AT OR AROUND 800°F (426°C). THE RESULTING SURFACE IS RESISTANT TO RUST BUT HAS SOME UNEVENNESS RESULTING FROM THE BONDING OF THE ZINC TO THE STEEL SURFACE. AS A RESULT, THE POWDER-COATING SURFACE FINISH OVER THAT GALVANIZED SURFACE MAY EXHIBIT BUMPS, UNEVENNESS, AND MAY NOT BE AS SMOOTH AS THE STANDARD FINISH; THIS UNEVEN AND INCONSISTENT FINISH IS NORMAL FOR GALVANIZING. CONTACT MANUFACTURER FOR DETAILS.
 8. ALL SPECIFICATIONS ARE SUBJECT TO CHANGE. CONTACT MANUFACTURER FOR DETAILS.
 9. THIS PRODUCT IS SHIPPED FULLY ASSEMBLED.

LID:
 STANDARD WITH SOLID CONVEX LID (AS SHOWN), AVAILABLE WITH OPTIONAL SOLID CONVEX LID WITH RAISED BAND. AVAILABLE WITH OPTIONAL STAINLESS STEEL ARBITRARY. ARBITRARY AVAILABLE WITH OPTIONAL ARBITRARY COVER.
SECURITY:
 STANDARD WITH INTERIOR LATCH (AS SHOWN), AVAILABLE WITH OPTIONAL KEYS LOCK BOX OR THE KEYS LOCK BOX. LID SOLID IN PLACE. AVAILABLE WITH OPTIONAL WAXY WITH 9" IN-LINE ANCHOR HOLES AND OPTIONAL BOTTOM PLATE COVER.

MODEL: STEELSITE SERIES TRASH CAN SD-36
STANDARD CONVEX RIVETED LID
MANUFACTURER: VICTOR STANLEY, INC.
AS SUPPLIED BY DOWNS & ASSOCIATES
CONTACT:
MELANIE POLANCO
P: 303-744-0399

3 TRASH RECEPTACLE NOT TO SCALE

Y:\HESS PANCH\LANDSCAPE ARCHITECTURE\CURRENT DWS\HESS-LDSCP PLANS - FILING-15_CDS.DWG
 Saturday, June 23, 2018

Prepared For
ESX MANAGEMENT
 7353 SOUTH ALTON WAY
 CENTENNIAL, CO 80112

Land Planning
 people creating spaces
 pcs group inc. www.pcsgruop.com
 435 15th Street, Denver, CO 80265
 1.303.531.4905 1.303.531.4906

Engineering
CVL
 CONSULTANTS
 10333 E. DRY CREEK RD. #240
 ENGLEWOOD, CO 80112
 720-482-9526

TRAILS AT CROWFOOT
 FILING 15 LANDSCAPE PLANS
 PARKER, COLORADO

Drawn by:	BEM, GG, JWD
Checked by:	FGS STAFF
Submittal Date:	06/20/2018
	09/26/2018
	10/29/2018
	06/25/2020

Know what's below.
 Call before you dig.

Sheet Name
SITE & LANDSCAPE DETAILS

Sheet Number
L2.1