

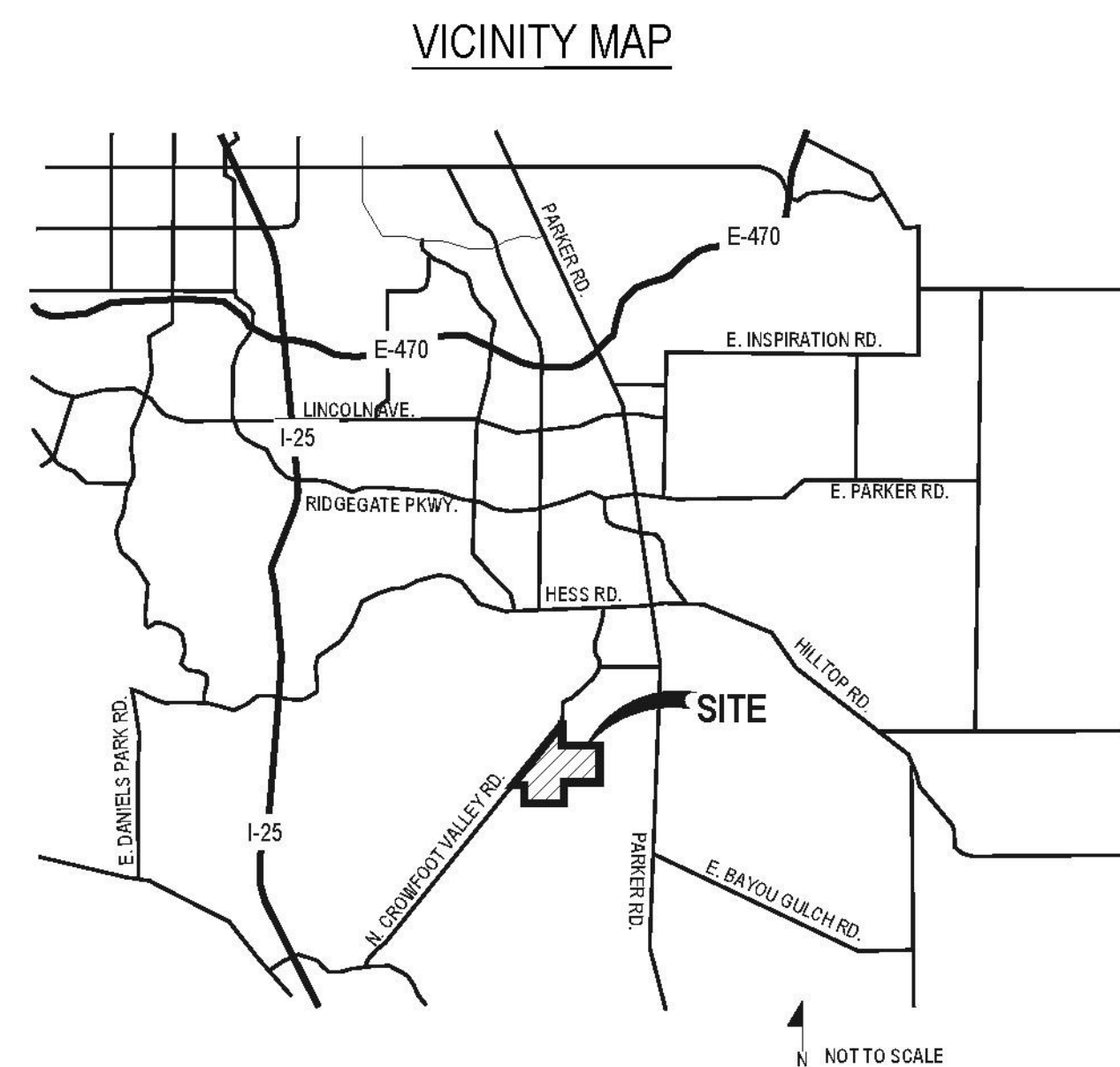
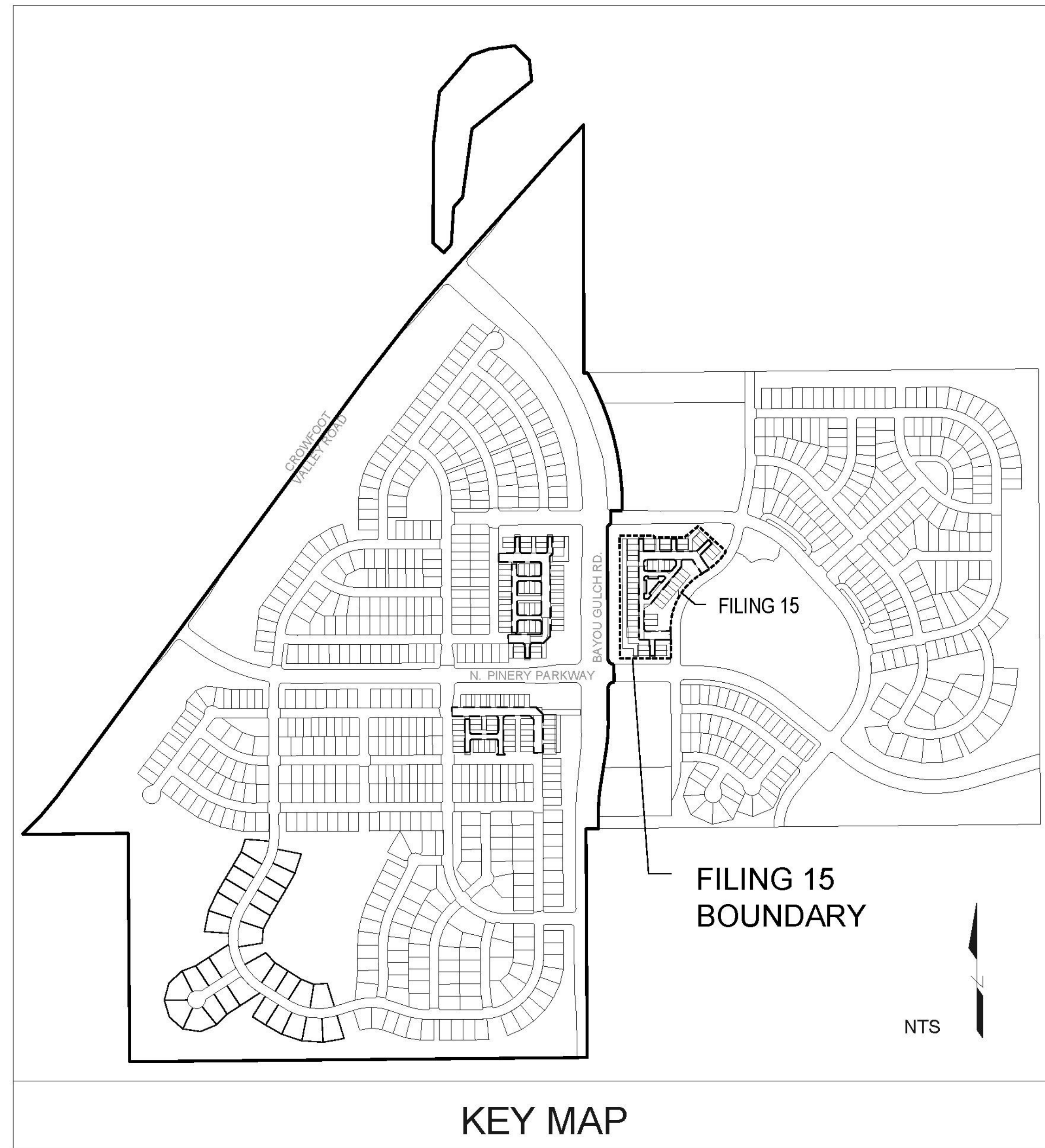
# TRAILS AT CROWFOOT AMENDMENT NO.1

## LANDSCAPE PLANS

### FILING 15, MIXED USE

#### GENERAL NOTES

- DRAWINGS ARE INTENDED TO BE PRINTED ON 24 X 36 PAPER. PRINTING THESE DRAWINGS AT A DIFFERENT SIZE WILL IMPACT THE SCALE. VERIFY THE GRAPHIC SCALE BEFORE REFERENCING ANY MEASUREMENTS ON THESE SHEETS. THE RECIPIENT OF THESE DRAWINGS SHALL BE RESPONSIBLE FOR ANY ERRORS RESULTING FROM INCORRECT PRINTING, COPYING, OR ANY OTHER CHANGES THAT ALTER THE SCALE OF THE DRAWINGS.
- VERIFY ALL PLAN DIMENSIONS PRIOR TO START OF CONSTRUCTION. NOTIFY THE OWNER'S REPRESENTATIVE TO ADDRESS ANY QUESTIONS OR CLARIFY ANY DISCREPANCIES.
- WRITTEN DIMENSIONS TAKE PRECEDENCE OVER SCALED DIMENSIONS.
- SUBMIT A CHANGE ORDER FOR APPROVAL FOR ANY CHANGES TO WORK SCOPE RESULTING FROM FIELD CONDITIONS OR DIRECTION BY OWNER'S REPRESENTATIVE WHICH REQUIRE ADDITIONAL COST TO THE OWNER PRIOR TO PERFORMANCE OF WORK.
- THE CONTRACTOR SHALL PROVIDE A STAKED LAYOUT OF ALL SITE IMPROVEMENTS FOR INSPECTION BY THE OWNER'S REPRESENTATIVE AND MAKE MODIFICATIONS AS REQUIRED. ALL LAYOUT INFORMATION IS AVAILABLE IN DIGITAL FORMAT FOR USE BY THE CONTRACTOR.
- IF A GEOTECHNICAL SOILS REPORT IS NOT AVAILABLE AT THE TIME OF CONSTRUCTION, PCS GROUP, INC. RECOMMENDS A REPORT BE AUTHORIZED BY THE OWNER AND THAT ALL RECOMMENDATIONS OF THE REPORT ARE FOLLOWED DURING CONSTRUCTION.
- THE CONTRACTOR SHALL USE THESE CONTRACT DOCUMENTS AS A BASIS FOR THE BID. IF THE OWNER ELECTS TO PROVIDE A GEOTECHNICAL REPORT, THE CONTRACTOR SHALL REVIEW THE REPORT AND SUBMIT AN APPROPRIATE CHANGE ORDER TO THE OWNER'S REPRESENTATIVE IF ADDITIONAL COSTS ARE REQUESTED.
- CONTRACTOR SHALL CONFIRM THAT SITE CONDITIONS ARE SIMILAR TO THE PLANS WITHIN TOLERANCES STATED IN THE CONTRACT DOCUMENTS, AND SATISFACTORY TO THE CONTRACTOR PRIOR TO START OF WORK. SHOULD SITE CONDITIONS BE DIFFERENT THAN REPRESENTED ON THE PLANS OR UNSATISFACTORY TO THE CONTRACTOR, THE CONTRACTOR SHALL CONTACT THE OWNER'S REPRESENTATIVE FOR CLARIFICATION AND FURTHER DIRECTION.
- CONTRACTOR IS RESPONSIBLE TO PAY FOR, AND OBTAIN, ANY REQUIRED APPLICATIONS, PERMITTING, LICENSES, INSPECTIONS AND METERS ASSOCIATED WITH WORK.
- THE CONTRACTOR SHALL BE RESPONSIBLE FOR ANY FINES OR PENALTIES ASSESSED TO THE OWNER RELATING TO ANY VIOLATIONS OR NON-COMFORMANCE WITH THE PLANS, SPECIFICATIONS, CONTRACT DOCUMENTS, JURISDICTIONAL CODES AND REGULATORY AGENCIES.
- THE CONTRACTOR SHALL BE RESPONSIBLE FOR COORDINATION OF ALL UTILITY LOCATES PRIOR TO ANY EXCAVATION. NOTIFY OWNER'S REPRESENTATIVE IF EXISTING OR PROPOSED UTILITIES INTERFERE WITH THE ABILITY TO PERFORM WORK.
- UNLESS IDENTIFIED ON THE PLANS FOR DEMOLITION OR REMOVAL, THE CONTRACTOR IS RESPONSIBLE FOR THE COST TO REPAIR UTILITIES, ADJACENT OR EXISTING LANDSCAPE, ADJACENT OR EXISTING PAVING, OR ANY PUBLIC AND PRIVATE PROPERTY THAT IS DAMAGED BY THE CONTRACTOR OR THEIR SUBCONTRACTOR'S OPERATIONS DURING INSTALLATION, ESTABLISHMENT OR DURING THE SPECIFIED MAINTENANCE PERIOD. ALL DAMAGES SHALL BE REPAIRED TO PRE-CONSTRUCTION CONDITIONS AS DETERMINED BY THE OWNER'S REPRESENTATIVE. CONTRACTOR SHALL BE RESPONSIBLE FOR LOGGING ANY DAMAGES PRIOR TO START OF CONSTRUCTION AND DURING THE CONTRACT PERIOD.
- ANY AREAS OR IMPROVEMENTS DISTURBED OUTSIDE WORK AREA LIMITS SHALL BE RETURNED TO THEIR ORIGINAL CONDITION AT THE CONTRACTOR'S EXPENSE. IN THE EVENT THE CONTRACTOR REQUIRES A MODIFICATION TO THE CONSTRUCTION LIMITS, WRITTEN PERMISSION MUST BE OBTAINED FROM THE OWNER'S REPRESENTATIVE PRIOR TO ANY DISTURBANCE OUTSIDE OF THE LIMITS OF WORK.
- THE CONTRACTOR SHALL BE RESPONSIBLE FOR THE REPAIR OF ANY OF THEIR TRENCHES OR EXCAVATIONS THAT SETTLE.
- THE CONTRACTOR SHALL BE RESPONSIBLE TO PREPARE AND SUBMIT A TRAFFIC CONTROL PLAN TO THE APPROPRIATE JURISDICTIONAL AGENCIES AND THE OWNER'S REPRESENTATIVE IF THEIR WORK AND OPERATIONS AFFECT OR IMPACT THE PUBLIC RIGHTS-OF-WAY. OBTAIN APPROVAL PRIOR TO ANY WORK WHICH AFFECTS OR IMPACTS THE PUBLIC RIGHTS-OF-WAY. THE CONTRACTOR SHALL BE RESPONSIBLE FOR ANY FINES OR PENALTIES ASSESSED TO THE OWNER RELATING TO THIS REQUIREMENT DURING THE CONTRACT PERIOD.
- SIGHT TRIANGLES AND SIGHT LINES SHALL REMAIN UNOBSTRUCTED BY EQUIPMENT, CONSTRUCTION MATERIALS, PLANT MATERIAL OR ANY OTHER VISUAL OBSTACLE DURING THE CONTRACT PERIOD AND AT MATURITY OF PLANTS PER LOCAL JURISDICTIONAL REQUIREMENTS. NO PLANT MATERIAL OTHER THAN GROUND COVER IS ALLOWED TO BE PLANTED ADJACENT TO FIRE HYDRANTS AS STIPULATED BY JURISDICTIONAL REQUIREMENTS.
- COORDINATE SITE ACCESS, STAGING, STORAGE AND CLEAN OUT AREAS WITH OWNER'S REPRESENTATIVE.
- CONTRACTOR IS RESPONSIBLE FOR PROVIDING TEMPORARY SAFETY FENCING AND BARRIERS AROUND ALL IMPROVEMENTS SUCH AS WALLS, PLAY STRUCTURES, EXCAVATIONS, ETC. ASSOCIATED WITH THEIR WORK UNTIL SUCH FACILITIES ARE COMPLETELY INSTALLED PER THE PLANS, SPECIFICATIONS AND MANUFACTURER'S RECOMMENDATIONS.
- CONTRACTOR SHALL BE RESPONSIBLE FOR PROTECTION OF THEIR MATERIAL STOCKPILES CONCRETE IN THE STORM SEWER IS PROHIBITED.
- THE CONTRACTOR SHALL KNOW, UNDERSTAND AND ABIDE BY ANY STORM WATER POLLUTION PREVENTION PLAN (SWPPP) ASSOCIATED WITH THE SITE. IF A STORM WATER POLLUTION PREVENTION PLAN IS NOT PROVIDED BY THE OWNER'S REPRESENTATIVE, REQUEST A COPY BEFORE PERFORMANCE OF ANY SITE WORK.
- CONTRACTOR SHALL MAINTAIN ANY STORM WATER MANAGEMENT FACILITIES THAT EXIST ON SITE FOR FULL FUNCTIONALITY. THE CONTRACTOR SHALL INSTALL AND MAINTAIN ANY NEW STORM WATER MANAGEMENT FACILITIES THAT ARE IDENTIFIED IN THE SCOPE OF WORK TO FULL FUNCTIONALITY. THE CONTRACTOR SHALL BE RESPONSIBLE FOR ANY FINES OR PENALTIES ASSESSED TO THE OWNER FOR FAILURE TO MAINTAIN STORM WATER MANAGEMENT FACILITIES DURING THE CONTRACT PERIOD.
- THE CONTRACTOR SHALL PREVENT SEDIMENT, DEBRIS AND ALL OTHER POLLUTANTS FROM EXITING THE SITE OR ENTERING THE STORM SEWER SYSTEM DURING ALL DEMOLITION OR CONSTRUCTION OPERATIONS THAT ARE PART OF THIS PROJECT. THE CONTRACTOR SHALL BE RESPONSIBLE FOR ANY FINES OR PENALTIES ASSESSED TO THE OWNER RELATING TO THESE REQUIREMENTS DURING THEIR CONTRACTED COURSE OF WORK.
- THE CONTRACTOR SHALL BE RESPONSIBLE TO PREVENT ANY IMPACTS TO ADJACENT WATERWAYS, WETLANDS, OR OTHER ENVIRONMENTALLY SENSITIVE AREAS RESULTING FROM WORK DONE AS PART OF THIS PROJECT. THE CONTRACTOR SHALL BE RESPONSIBLE FOR ANY FINES OR PENALTIES ASSESSED TO THE OWNER RELATING TO THESE STANDARDS DURING THEIR CONTRACTED COURSE OF WORK.
- THE CONTRACTOR AND OR THEIR AUTHORIZED AGENTS SHALL INSURE THAT ALL LOADS OF CONSTRUCTION MATERIAL IMPORTED TO OR EXPORTED FROM THE PROJECT SITE SHALL BE PROPERLY COVERED TO PREVENT LOSS OF MATERIAL DURING TRANSPORT. TRANSPORTATION METHODS ON PUBLIC RIGHT-OF-WAYS SHALL CONFORM TO JURISDICTIONAL REQUIREMENTS. THE CONTRACTOR SHALL BE RESPONSIBLE FOR ANY FINES OR PENALTIES ASSESSED TO THE OWNER RELATING TO THESE REQUIREMENTS.
- THE CLEANING OF EQUIPMENT IS PROHIBITED AT THE JOB SITE UNLESS AUTHORIZED BY THE OWNER'S REPRESENTATIVE IN A DESIGNATED AREA. THE DISCHARGE OF WATER, WASTE CONCRETE, POLLUTANTS, OR OTHER MATERIALS SHALL ONLY OCCUR IN AREAS DESIGNED FOR SUCH USE AND APPROVED BY THE OWNER'S REPRESENTATIVE.

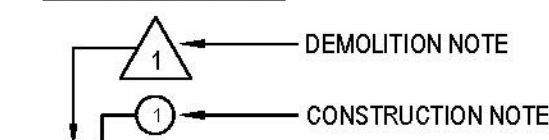


#### KEY MAP

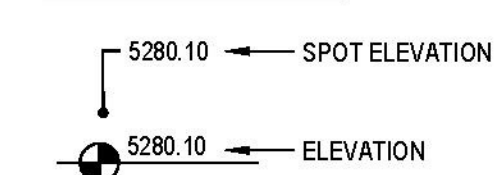
#### SYMBOLS & ABBREVIATIONS

AC = ACRE	EXP. = EXPANSION	O.C. = ON CENTER
APPROXIMATE = APPROX.	EW = EACH WAY	O.D. = OUTSIDE DIAMETER
B&B = BALL AND BURLAP	FF = FINISH FLOOR	P.O.B. = POINT OF BEGINNING
BOC = BACK OF CURB	F.G. = FINISH GRADE	P.O.C. = POINT OF CONNECTION
B.M. = BENCH MARK	FIN. = FINISH	P.V.C. = POLYVINYL CHLORIDE
BLDG. = BUILDING	F.H. = FIRE HYDRANT	PIPE
B.S. = BOTTOM OF STAIR	FL = FLOW LINE	PL = PROPERTY LINE
B.W. = BOTTOM OF WALL	FTG. = FOOTING	R = RADIUS
CAL. = CALIPER	FT. = FEET	R.C.P. = REINFORCED CONCRETE PIPE
C.B. = CATCH BASIN	GA. = GAUGE	SO. = SQUARE
CL CATCH BASIN CENTER LINE	GALV. = GALVANIZED	S.F. = SQUARE FEET
C.O. = CLEANOUT	H.W. = HEAD WALL	S.V. = SQUARE YARD
COL. = COLUMN	H.P. = HIGH POINT	S.S. = STAINLESS STEEL
CONC. = CONCRETE	HT. = HEIGHT	T.C. = TOP OF CURB
CONT. = CONTINUOUS	HORIZ. = HORIZON	T.S. = TOP OF STAIR
CONTR. = CONTRACTOR	I.D. = INNER DIAMETER	T.W. = TOP OF WALL
C.F. = CUBIC FEET	IN. = INCH	TYP. = TYPICAL
C.Y. = CUBIC YARD	INV. = INVERT	VERT. = VERTICAL
DET. = DETAIL	L.P. = LOW POINT	W/O = WITH OUT
DIM. = DIMENSION	L.F. = LINEAR FEET	W.W.M. = WOVEN WIRE MESH
DIA. = DIAMETER	MAX. = MAXIMUM	
DWG. = DRAWING	M.H. = MAN HOLE	
EA. = EACH	MIN. = MINIMUM	
ELEV. = ELEVATION	MISC. = MISCELLANEOUS	
EXIST. = EXISTING	N.I.C. = NOT IN CONTRACT	
E.P. = EDGE OF PAVING	N.T.S. = NOT TO SCALE	

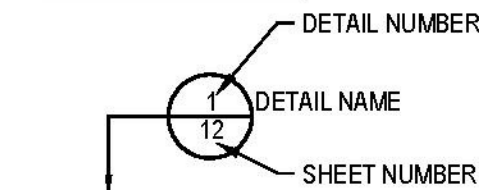
#### NOTE IDENTIFICATION



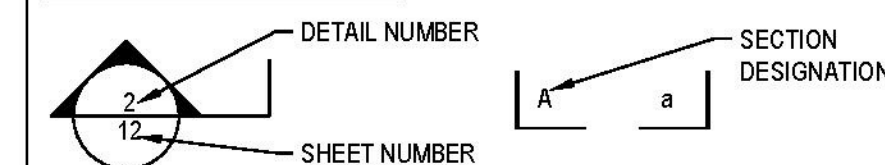
#### ELEVATION IDENTIFICATION



#### DETAIL IDENTIFICATION



#### DETAIL SECTION IDENTIFICATION



Sheet Number	Sheet Title
L0.0	LANDSCAPE COVER SHEET
L0.1	LANDSCAPE NOTES & PLANT SCHEDULE
L1.0	OVERALL LANDSCAPE PLAN
L1.1	LANDSCAPE PLAN
L1.2	LANDSCAPE PLAN
L1.3	LAYOUT, GRADING & MATERIAL ENLARGEMENTS
L1.4	LAYOUT, GRADING & MATERIAL ENLARGEMENTS
L2.0	LANDSCAPE DETAILS
L2.1	LANDSCAPE DETAILS
IR1.0	IRRIGATION LEGEND AND NOTES
IR1.1	IRRIGATION PLAN
IR1.2	IRRIGATION PLAN
IR2.1	IRRIGATION DETAILS
IR2.2	IRRIGATION DETAILS

OWNER / DEVELOPER

ESX MANAGEMENT  
7353 SOUTH ALTON WAY  
CENTENNIAL, CO 80112

PLANNER / LANDSCAPE ARCHITECT

people creating spaces  
pcs group inc. www.pcsgruopco.com  
#3, B-180 Independence plaza  
1007 16th street, denver co 80265  
1.303.531.4905 1.303.531.4908

CIVIL ENGINEER

CVL CONSULTANTS  
10333 E. DRY CREEK RD. #240  
ENGLEWOOD, CO 80112  
720-482-9526

Prepared For

ESX MANAGEMENT  
7353 SOUTH ALTON WAY  
CENTENNIAL, CO 80112

Land Planning



pcs group inc. www.pcsgruopco.com  
#3, B-180 Independence plaza  
1007 16th street, denver co 80265  
1.303.531.4905 1.303.531.4908

Engineering



10333 E. DRY CREEK RD. #240  
ENGLEWOOD, CO 80112  
720-482-9526

TRAILS AT CROWFOOT  
FILING 15 LANDSCAPE PLANS  
PARKER, COLORADO

Drawn by: BEM, GG, JWD

Checked by: PCS STAFF

Submitted Date: 06.20.2018

09.26.2018

10.29.2018

06.25.2020



Sheet Name  
LANDSCAPE COVER SHEET

Sheet Number

L0.0

# LANDSCAPE NOTES

- SITE PREP**
- LANDSCAPE CONTRACTOR TO REFERENCE CIVIL ENGINEERING DRAWINGS REGARDING DRAINAGE AND EROSION CONTROL NOTES, DETAILS AND PROCEDURES.
  - ALL WORK SHALL CONFORM TO LOCAL MUNICIPAL CODES. ALL WORK SHALL BE IN ACCORDANCE WITH OSHA CODES AND STANDARDS. NOTHING INDICATED ON THE LANDSCAPE DRAWINGS SHALL RELIEVE THE CONTRACTOR FROM COMPLYING WITH ANY APPROPRIATE SAFETY REGULATIONS. ALL UTILITY EASEMENTS SHALL REMAIN UNOBSTRUCTED AND FULLY ACCESSIBLE ALONG THEIR ENTIRE LENGTH FOR USE OF MAINTENANCE EQUIPMENT ENTRY.
  - SEE CIVIL ENGINEER'S DRAWINGS FOR GRADING AND DRAINAGE, EROSION CONTROL, PAVING AND SLEEVES, UTILITIES, AND OTHER ENGINEERED DETAILS.
  - CONTRACTOR SHALL ENSURE POSITIVE DRAINAGE AWAY FROM ALL STRUCTURES.
  - A PRE-CONSTRUCTION MEETING MAY BE REQUIRED BETWEEN THE LANDSCAPE CONTRACTOR, PROPERTY OWNER AND LANDSCAPE ARCHITECT BEFORE START OF CONSTRUCTION.
  - CONTRACTOR SHALL MINIMIZE ALL DISTURBANCE TO NON-IMPACTED AREAS.
  - SITE MUST BE CLEAN AND FREE OF ALL CONSTRUCTION DEBRIS BEFORE FINAL ACCEPTANCE.
  - CONTRACTOR IS RESPONSIBLE FOR SETUP OF BARRICADES, WARNING SIGNAGE, OR OTHER PROTECTIVE DEVICES IF ANY EXCAVATIONS ARE LEFT EXPOSED AFTER ON-SITE WORK HOURS.
  - IT IS THE CONTRACTOR'S RESPONSIBILITY TO ACQUIRE ALL NECESSARY PERMITS FOR CONSTRUCTION WORK WITHIN THE LOCAL JURISDICTION. A SEPARATE LANDSCAPE CONSTRUCTION PERMIT IS REQUIRED AND USE AND SALES TAX WILL BE COLLECTED. WATER CONNECTION FEES ARE TO BE PAID PRIOR TO THE METER SETTING. A BACK FLOW PERMIT AND INSPECTION IS REQUIRED PRIOR TO THE METER BEING INSTALLED IN THE VAULT.
  - TOPSOIL IS TO BE STRIPPED & STOCKPILED ON-SITE FOR LATER USE.
  - CONTRACTOR IS RESPONSIBLE FOR REPLACEMENT OF ANY EXISTING OR NEW SITE IMPROVEMENTS DISTURBED OR DAMAGED DUE TO THEIR OPERATIONS. DAMAGED MATERIALS SHALL BE REPLACED/REPAIRED TO ITS PRIOR CONDITION.
  - LOCATE ALL UTILITIES PRIOR TO ANY DIGGING OR LANDSCAPE PLANTING. CONTRACTOR SHALL HAND DIG ALL PLANTING PITS ADJACENT TO UTILITIES. IF UTILITIES ARE DAMAGED, REPAIRS SHALL BE MADE AT THE CONTRACTOR'S EXPENSE.
  - PRIOR TO INSTALLATION OF PLANT MATERIALS, AREAS THAT HAVE BEEN COMPACTED OR DISTURBED BY CONSTRUCTION ACTIVITY SHALL BE THOROUGHLY LOOSENEED & AMENDED.
  - ALL LANDSCAPE AREAS SHALL RECEIVE SOIL AMENDMENT ROTOTILLED AT A MIN. 8" DEPTH AT A RATE OF 4 CUBIC YARDS PER 1,000 SF.
  - CONTRACTOR SHALL SUBMIT SOIL AMENDMENT SPECIFICATIONS FOR APPROVAL PRIOR TO INSTALLATION.
  - THE LANDSCAPE CONTRACTOR SHALL BE RESPONSIBLE FOR ENSURING POSITIVE DRAINAGE EXISTS IN ALL LANDSCAPE AREAS. SURFACE DRAINAGE ON LANDSCAPE AREAS SHALL NOT FLOW TOWARD STRUCTURES AND FOUNDATIONS. MAINTAIN SLOPE AWAY FROM FOUNDATIONS PER THE GEOTECH REPORT RECOMMENDATIONS. ALL LANDSCAPE AREAS BETWEEN WALKS AND CURBS SHALL DRAIN FREELY TO THE CURB UNLESS OTHERWISE IDENTIFIED ON THE GRADING PLAN. IN NO CASE SHALL THE GRADING PLAN, OR OTHER LANDSCAPE MATERIALS DAM WATER AGAINST WALKS. MINIMUM SLOPES ON LANDSCAPE AREAS SHALL BE 2% MAXIMUM SLOPE SHALL BE 25% UNLESS SPECIFICALLY IDENTIFIED ON THE PLANS OR APPROVED BY LANDSCAPE ARCHITECT.
- TURF, PLANT & GROUND COVER MATERIAL**
- ANY SUBSTITUTION OR ALTERATION OF PLANT OR LANDSCAPE MATERIALS IN LOCATION, SPECIES, TYPE, ETC. SHALL BE ALLOWED ONLY WITH APPROVAL OF THE LANDSCAPE ARCHITECT. OVERALL PLANT QUANTITY AND QUALITY TO BE CONSISTENT WITH APPROVED PLANS, ANY CHANGES TO THE APPROVED LANDSCAPE PLAN WILL REQUIRE TOWN APPROVAL.
  - ALL PLANT MATERIALS SHALL BE IN ACCORDANCE WITH AAN SPECIFICATIONS FOR NUMBER ONE GRADE.
  - PROPOSED TREE LOCATIONS SHALL HAVE A MINIMUM SEPARATION OF 4' BETWEEN WATER OR SEWER SERVICE LINES AND A MINIMUM SEPARATION OF 10' BETWEEN WATER OR SEWER MAIN LINES. PROPOSED TREE LOCATIONS SHALL HAVE A MINIMUM SEPARATION OF 4' BETWEEN GAS LINES.
  - ALL PROPOSED IRRIGATED TURF AREAS SHALL BE SODDED WITH THE BLEND SPECIFIED IN THESE PLANS. SOD SHALL BE LAID ON A FIRM BED WITH TIGHT JOINTS AND WITHOUT VOIDS.
  - TREE WRAP TO BE APPLIED IN LATE FALL AFTER INSTALLATION, AND REMOVED THE FOLLOWING SPRING. REMOVE ANY STRING OR WIRE AROUND TREE TRUNKS AT TIME OF INSTALLATION.
  - CONTRACTOR SHALL REPORT ANY DISCREPANCY FOUND IN THE FIELD VERSUS THE LANDSCAPE DRAWINGS IMMEDIATELY TO THE LANDSCAPE ARCHITECT, OWNER'S REPRESENTATIVE, AND/OR THE CITY/COUNTY PRIOR TO ANY CONSTRUCTION OR DEMOLITION ACTIVITY. FAILURE TO MAKE SUCH CONFLICTS KNOWN WILL RESULT IN THE CONTRACTOR'S LIABILITY TO RELOCATE AND REPAIR.
  - MAINTAIN A MINIMUM THREE FOOT CLEARANCE AROUND FIRE HYDRANTS, FIRE DEPARTMENT CONNECTIONS OR OTHER FIRE SERVICE EQUIPMENT. NO TREES OR SHRUBS WILL BE ALLOWED WITHIN THIS AREA.
  - TREES SHALL NOT BE LOCATED IN DRAINAGE SWALES, AREAS OR UTILITY EASEMENTS. CONTACT LANDSCAPE ARCHITECT FOR RELOCATION OF PLANTS IN QUESTIONABLE AREAS PRIOR TO INSTALLATION.
  - THE CENTER OF EVERGREEN TREES SHALL NOT BE PLACED CLOSER THAN 8' AND THE CENTER OF ORNAMENTAL TREES CLOSER THAN 8' FROM A

# FINE GRADING NOTES

- SLOPES NOT TO EXCEED 4:1 MAX. - 1% MIN.
- SATISFACTORY SOILS: ASTM D 2487 SOIL CLASSIFICATION GROUPS GW, GP, GM, SW, SP, AND SM, OR A COMBINATION OF THESE GROUP SYMBOLS; FREE OF ROCK OR GRAVEL LARGER THAN 3 INCHES (75 MM) IN ANY DIMENSION, DEBRIS, WASTE, FROZEN MATERIALS, VEGETATION, AND OTHER DELETERIOUS MATTER.
- STRIP TOPSOIL TO WHATEVER DEPTHS ARE ENCOUNTERED IN A MANNER TO PREVENT INTERMINGLING WITH UNDERLYING SUBSOIL OR OTHER WASTE MATERIALS.
- STRIP EXISTING SURFACES OF UNSUITABLE TOPSOIL, INCLUDING TRASH, DEBRIS, WEEDS, ROOTS, AND OTHER WASTE MATERIALS.
- STOCKPILE TOPSOIL MATERIALS ON-SITE WITHOUT INTERMINGLING WITH SUBSOIL.
- REMOVE EXISTING VEGETATION, DEBRIS, UNSATISFACTORY SOIL MATERIALS, OBSTRUCTIONS, AND DELETERIOUS MATERIALS FROM GROUND SURFACE BEFORE PLACING FILLS.
- LOW, SCARIFY, BENCH, OR BREAK UP SLOPED SURFACES STEEPER THAN 1 VERTICAL TO 4 HORIZONTAL SO FILL MATERIAL WILL BOND WITH EXISTING MATERIAL.
- PLACE AND COMPACT FILL MATERIAL IN LAYERS TO REQUIRED CROSS-SECTIONS, ELEVATIONS AND GRADES WITH SATISFACTORY SOIL MATERIAL.
- UNIFORMLY GRADE AREAS TO A SMOOTH SURFACE, FREE FROM IRREGULAR SURFACE CHANGES. COMPLY WITH COMPACTION REQUIREMENTS AND GRADE TO CROSS SECTIONS, LINES, AND ELEVATIONS INDICATED.

# SEEDING ESTABLISHMENT NOTES:

- SEED SHALL BE LABELED IN ACCORDANCE WITH THE U.S. DEPARTMENT OF AGRICULTURE, RULES AND REGULATIONS AND FEDERAL SEED ACT. SEED SHALL BE EQUAL IN QUALITY TO THE STANDARDS FOR "CERTIFIED SEED" AND SHALL BE FURNISHED IN SEALED, UNOPENED, STANDARD CONTAINERS. SEED SHALL BE FRESH, CLEAN, PURE LIVE SEED WITH THE VARIETIES MIXED IN PROPORTIONS BY WEIGHT SHOWN AND MEETING THE MINIMUM PERCENTAGES OF PURITY AND GERMINATION SPECIFIED.
- SEED SHALL BE APPLIED AT A RATE SHOWN BY MX. SEED SHALL PASS GOVERNMENT TEST OF GERMINATION OF EIGHTY PERCENT (80%) AND FOR PURITY OF NINETY PERCENT (90%). THE PURE LIVE SEED SHALL NOT BE LESS THAN SIXTY SEVEN ON ONE-HALF PERCENT (67.5%) FOR ANY ONE VARIETY, WITH THE AVERAGE OF THE MIXTURE, NO LESS THAN SEVENTY TWO PERCENT (72%). ALL SEED SHALL BE FREE OF POA ANNUA AND ALL NOXIOUS OBJECTIONABLE WEEDS WITH A MAXIMUM CROP OF ONE-TENTH PERCENT (0.1%) AND MAXIMUM WEED OF ONE TENTH PERCENT (0.1%). IF SEED AVAILABLE ON THE MARKET DOES NOT MEET THE MINIMUM PURITY AND GERMINATION PERCENTAGES SPECIFIED, THE CONTRACTOR MUST COMPENSATE BY FURNISHING SUFFICIENT ADDITIONAL SEED TO EQUAL THE SPECIFIED PRODUCT.
- SPREAD ORGANIC SOIL AMENDMENT MATERIALS, AT A RATE OF 3 C.Y. PER 1000 SQUARE FEET, EVENLY OVER ENTIRE DISTURBED AREA AND THOROUGHLY INCORPORATE, BY MIXING, ROTOTILLING OR FINELY DISKING (MAX. 1" SIZE), TO A DEPTH OF SIX INCHES. ALL STONES, STICKS AND DEBRIS BROUGHT TO THE SURFACE SHALL BE REMOVED FROM THE SITE PROPERLY DISPOSED OF BY THE CONTRACTOR, AT NO ADDITIONAL COST TO THE OWNER. ALL SEED AREAS WILL THEN BE RAKED AND ROLLED TO THE DESIRED FINISHED GRADES WITH GENTLY SLOPING SURFACES TO ADEQUATELY DRAIN ALL SURFACE WATER RUNOFF. THE FINISHED SURFACE SHALL BE EVEN AND UNIFORM AND NO DIRT CLODS LARGER THAN ONE INCH (1") IN DIAMETER SHALL APPEAR ON THE SURFACE. THE SOIL SURFACE SHALL BE SMOOTH, LOOSE AND OF FINE TEXTURE, AND BE FLUSH WITH ALL PAVING EDGES.
- CONTRACTOR SHALL USE APPROPRIATE MECHANICAL POWER (BRILLION SEEDER OR EQUAL) TO DRILL THE SEED INTO THE SEEDBED WHEREVER POSSIBLE. SEED SHALL BE SOWN TO A DEPTH OF ONE-HALF INCH (1/2"). DRILLING SHALL BE DONE IN 2 SEPARATE OPERATIONS CROSSING THE AREA AT RIGHT ANGLES TO ONE ANOTHER TO GUARANTEE PROPER COVERAGE. ON SLOPING LAND, SEEDING OPERATIONS SHALL FOLLOW THE GENERAL CONTOUR. AREAS TOO SMALL TO DRILL SEED MAY BE BROADCAST BY HAND AND APPLICATION RATES SHALL BE DOUBLED. SEEDING OF ANY KIND WILL NOT BE PERMITTED WHEN WIND VELOCITY IS SUCH AS TO PREVENT UNIFORM SEED DISTRIBUTION. NO APPLICATION SHALL TAKE PLACE WITH THE PRESENCE OF FREE SURFACE WATER OR WHEN GROUND IS FROZEN OR CANNOT BE TILLED. ADDITIONAL TOPICAL OVER SEEDING MAY BE APPLIED TO PREVIOUSLY SEEDED AREAS IN ORDER TO ACHIEVE ADEQUATE GROUND COVER AND EROSION RESISTANCE.
- SEEDED AREAS MAY REQUIRE TEMPORARY ABOVE GROUND SPRAY IRRIGATION UNTIL ESTABLISHMENT. IRRIGATION SHALL BE REMOVED UPON ACCEPTANCE BY THE CITY. WHERE STEEP SLOPES OCCUR, LANDSCAPE CONTRACTOR MAY REQUIRE VARIOUS METHODS OF TEMPORARY

- SIDEWALK, STREET OR DRIVE LANE. EVERGREEN TREES SHALL NOT BE LOCATED ANY CLOSER THAN 15' FROM IRRIGATION ROTOR HEADS. NOTIFY LANDSCAPE ARCHITECT IF TREE LOCATIONS CONFLICT WITH THESE STANDARDS FOR FURTHER DIRECTION.
- ALL EVERGREEN TREES SHALL BE FULLY BRANCHED TO THE GROUND AND SHALL NOT EXHIBIT SIGNS OF ACCELERATED GROWTH AS DETERMINED BY LANDSCAPE ARCHITECT.
  - NO PLANT MATERIAL SHALL BE PLANTED WITHIN 10' OF ANY EXISTING OR PROPOSED ELECTRICAL SWITCHGEARS, TRANSFORMERS OR OTHER ELECTRICAL UTILITY EQUIPMENT. PLANT MATERIAL MAY BE FIELD ADJUSTED TO PROVIDE THE 10' CLEAR SPACE AND ACCESSIBILITY REQUIRED BY THE UTILITY'S OWNER/OPERATOR.
  - ANY TREES INSTALLED ABOVE RETAINING WALLS UTILIZING GEO-GRID MUST BE DUG TO PROTECT GEO-GRID. IF GEO-GRID MUST BE CUT TO INSTALL TREES, APPROVAL MUST BE GIVEN BY LANDSCAPE ARCHITECT PRIOR TO DOING WORK.
  - PROPOSED PLANT SPECIES MAY BE SUBJECT TO CHANGE PENDING COMMERCIAL AVAILABILITY AT TIME OF CONSTRUCTION. ALL SPECIES SUBSTITUTIONS SHALL BE APPROVED BY THE LANDSCAPE ARCHITECT PRIOR TO INSTALLATION. OVERALL PLANT QUANTITIES & SIZES SHALL REMAIN AS INDICATED ON THE PLANT SCHEDULE. CONTRACTOR SHALL VERIFY THAT ANY SUBSTITUTED PLANT SPECIES ARE ACCEPTABLE TO THE LOCAL MUNICIPALITY OR GOVERNING JURISDICTIONS.
  - IF SPECIFIED PLANTS ARE NOT COMMERCIALY AVAILABLE AT TIME OF CONSTRUCTION/INSTALLATION, CONTRACTOR SHALL COORDINATE WITH LANDSCAPE ARCHITECT FOR A SUBSTITUTION.

### PLANTING BEDS

- ALL PROPOSED PLANTING BEDS SHALL CONTAIN THE SPECIFIED MULCH. ROCK MULCH SHALL INCLUDE MRAP WEED BARRIER FABRIC OR EQUAL SECURED WITH PINS. OVERLAP FABRIC MIN. 2" AT EDGES. NO FABRIC IS REQUIRED IN WOOD MULCH AREAS.
- ROCK MULCH AROUND VEGETATION SHALL CONTAIN 1 1/2"-2" DIA. ROUND RIVER ROCK, TAN COLOR, 3" DEPTH.
- WOOD MULCH SHALL BE 'GORILLA HAIR' OR EQUAL SHREDDED CEDAR MULCH, 4" DEPTH.
- EDGING BETWEEN TURF AND PLANTING BEDS SHALL BE 12-GAUGE, GREEN COLOR, ROLLED-TOP, STEEL EDGING OR EQUIVALENT. ANY NO EDGING IS REQUIRED AGAINST HARDSCAPE/WALK AREAS OR AT TREE RING EDGES. EDGING SHALL BE INSTALLED TO AVOID IMPEDING DRAINAGE. RE: DETAILS FOR INSTALLATION IN LOW DRAINAGE AREAS.
- FOR TREES NOT IN PLANTING BEDS, ALLOW A 8'-0" DIAMETER BED (TREE RING) WITHOUT SOD AROUND ROOT COLLAR. APPLY SPECIFIED WOOD MULCH & DEPTH AROUND COLLAR FOLLOWING SOD INSTALLATION. NO FABRIC OR STEEL EDGER IS NECESSARY WITHIN TREE RINGS IN NATIVE AREAS. TREES IN PLANTING BEDS SHALL NOT HAVE WEED BARRIER INSTALLED WITHIN 6" OF THEIR TRUNKS.

### HARDSCAPE

- REFER TO SITE PLANS & DETAILS FOR SPECIALTY CONCRETE LOCATIONS WHERE APPLICABLE.

### IRRIGATION

- PERMANENT UNDERGROUND IRRIGATION IS REQUIRED IN ALL LANDSCAPE AREAS. 2) TURF AREAS ARE ZONED SEPARATELY FROM BED AREAS, 3) CONTROLLER TO INCLUDE RAIN SHUT-OFF. 4) HYDRONZONES WILL BE ON SEPARATE IRRIGATION ZONES ACCORDING TO WATER-DEMAND.
- REFER TO IRRIGATION PLANS FOR LIMITS AND TYPES OF IRRIGATION DESIGNED FOR THE LANDSCAPE. IN NO CASE SHALL IRRIGATION BE EMITTED WITHIN THE MINIMUM STANDARDS FROM BUILDING OR WALL FOUNDATIONS AS STIPULATED IN THE GEOTECHNICAL REPORT. ALL IRRIGATIONS DISTRIBUTION LINES, HEADS AND EMITTERS SHALL BE KEPT OUTSIDE THE MINIMUM DISTANCE AWAY FROM ALL BUILDING AND WALL FOUNDATIONS AS STIPULATED IN THE GEOTECH REPORT.
- TURF & IRRIGATED NATIVE AREAS (WHERE APPLICABLE) SHALL BE IRRIGATED BY AUTOMATIC POP-UP SPRAY SYSTEM. SHRUBS & PLANTING BEDS SHALL BE IRRIGATED WITH DRIP/BUBBLER SYSTEM.
- ALL TREES & SHRUBS OUTSIDE OF BEDS WITHIN NATIVE AREAS SHALL BE DRIP IRRIGATED. ALL IRRIGATION SHALL BE AN AUTOMATIC UNDERGROUND SYSTEM.
- REFER TO IRRIGATION PLANS FOR DETAILED INFORMATION.

### MAINTENANCE

- CONTRACTOR IS TO MAINTAIN ALL PLANTINGS AND ASSOCIATED IRRIGATION SYSTEM INSTALLED UNDER THIS CONTRACT UNTIL FINAL ACCEPTANCE BY THE CITY AND TURNOVER TO OWNER. THIS MAINTENANCE SHALL INCLUDE PROPER WATERING OF ALL PLANTS, AND MOWING OF TURF/SEED AREAS IF NECESSARY.
- SITE MUST BE CLEAN AND FREE OF ALL CONSTRUCTION DEBRIS BEFORE FINAL ACCEPTANCE.
- ALL PLANT MATERIAL WILL BE COVERED BY A WARRANTY PERIOD. THE CONTRACTOR SHALL REPLACE DEAD, UNHEALTHY, OR OTHERWISE UNSATISFACTORY MATERIAL THROUGHOUT THIS PERIOD. THE WARRANTY SHALL BEGIN UPON FINAL ACCEPTANCE OF THE JOB.
- LANDSCAPING SHALL BE PLANTED AND MAINTAINED IN A LIVING CONDITION BY THE OWNER OR ASSIGNS OR OWNERS ASSOCIATION. TREES AND SHRUBS MUST HAVE A 100% ONGOING SURVIVAL RATE. ANY DEAD OR DAMAGED PLANT MATERIAL (AS DETERMINED BY THE LOCAL MUNICIPALITY) SHALL BE REPLACED. NON-LIVING GROUND COVERS, SUCH AS ROCK OR MULCH, MUST BE 100% INTACT AFTER ONE YEAR AND 100% INTACT THEREAFTER.
- LANDSCAPE AREAS WITHIN THE PROPERTY AND WITHIN THE ADJACENT RIGHT OF WAY SHALL BE MAINTAINED BY THE PROPERTY OWNER.

- PROVIDE A SMOOTH TRANSITION BETWEEN ADJACENT EXISTING GRADES AND NEW GRADES.
- CUT OUT SOFT SPOTS. FILL LOW SPOTS AND TRIM HIGH SPOTS TO COMPLY WITH REQUIRED SURFACE TOLERANCES.
- SITE GRADING: SLOPE GRADES TO DIRECT WATER AWAY FROM ADJACENT STRUCTURES AND TO PREVENT PONDING. FINISH SUBGRADES TO REQUIRED ELEVATIONS WITHIN THE FOLLOWING TOLERANCES:
  - A. AT LOCATIONS DESIGNATED FOR LAWN OR UNPAVED AREAS: PLUS OR MINUS 1 INCH (25 MM).
  - B. AT DESIGNATED PAVEMENT LOCATIONS: PLUS OR MINUS 1/2 INCH (13 MM).
- GRADING ON SLOPES: INSTALL EROSION STABILIZATION FABRIC PER MANUFACTURERS RECOMMENDATIONS ON SLOPED SURFACES EQUAL TO OR GREATER THAN A RATIO OF 1 VERTICAL FOOT TO 3 HORIZONTAL FEET.
- CONTRACTOR WILL ENGAGE A QUALIFIED INDEPENDENT GEOTECHNICAL ENGINEERING TESTING AGENCY TO PERFORM FIELD QUALITY-CONTROL TESTING.
- PROTECT NEWLY GRADED AREAS FROM TRAFFIC, FREEZING, AND EROSION. KEEP FREE OF TRASH AND DEBRIS.
- REPAIR AND REESTABLISH GRADES TO SPECIFIED TOLERANCES WHERE COMPLETED OR PARTIALLY COMPLETED SURFACES BECOME ERODED, RUTTED, SETTLED, OR WHERE THEY LOSE COMPACTION DUE TO SUBSEQUENT CONSTRUCTION OPERATIONS OR WEATHER CONDITIONS.
- WHERE SETTLING OCCURS BEFORE PROJECT CORRECTION PERIOD ELAPSES, REMOVE FINISHED SURFACE GRADING, BACKFILL WITH ADDITIONAL SOIL MATERIAL, COMPACT, AND RECONSTRUCT SURFACE GRADING.
- TRANSPORT SURPLUS SATISFACTORY SOIL TO DESIGNATED STORAGE AREAS ON OWNER'S PROPERTY. STOCKPILE OR SPREAD SOIL AS DIRECTED BY OWNER.

- IRRIGATION TO ACHIEVE SEED ESTABLISHMENT. SUCH METHODS SHALL BE IN COMPLIANCE WITH THE PROJECT'S EROSION CONTROL METHODS, BMP'S AND ALL CITY CODES AND REQUIREMENTS.
- MULCH WILL BE HYDRO MULCH. HYDRO MULCH SHALL BE CONWED 200 AND TACKIFIER OR APPROVED SUBSTITUTE MEETING THE FOLLOWING REQUIREMENTS.
    - I. VIRGIN WOOD CELLULOSE FIBER. MAY NOT CONTAIN ANY SUBSTANCE OR FIBER THAT MAY INHIBIT GERMINATION OR GROWTH OF GRASS SEEDS AND PLANTS.
    - II. DYE TO APPROPRIATE COLOR TO ALLOW PROPER METERING OF APPLICATION.
    - III. FIBERS MUST HAVE ABILITY TO BECOME EVENLY DISPERSED AND SUSPENDED WHEN AGITATED IN WATER.
    - IV. WHEN SPRAYED UNIFORMLY ON SURFACE OF SOIL, FIBERS SHALL FORM BLOTTER - LIKE GROUND COVER THAT READILY ABSORBS WATER, AND ALLOWS INFILTRATION TO UNDERLYING SOIL.
    - V. WEIGHT SPECIFICATIONS SHALL REFER ONLY TO AIR DRY WEIGHT OF FIBERS WITH A STANDARD MOISTURE CONTENT OF TEN PERCENT (10%).
    - VI. MULCH MATERIAL SHALL BE SUPPLIED IN CONTAINERS NOT WEIGHING OVER ONE HUNDRED (100) LBS AND SHOWING AIR DRY WEIGHT OF FIBERS.
    - VII. ORGANIC TACKIFIER MAY BE SUPPLIED WITH HYDROMULCH FIBERS OR BE ADDED AT A LATER TIME.

### WEED MANAGEMENT

BEFORE SEEDING, REMOVE EXISTING WEEDS BY PULLING, TILLING UNDER AND/OR, APPLYING A GLYPHOSATE HERBICIDE SUCH AS ROUNDUP®. OR BY A COMBINATION OF THESE METHODS. FOR ADDITIONAL WEED CONTROL AFTER SITE PREPARATION, A SOIL FUMIGANT MAY BE USED, OR THE AREA MAY BE IRRIGATED TO ENCOURAGE WEED GROWTH AND THEN SPRAYED WITH A GENERAL HERBICIDE. IN VERY WEEDY AREAS, THE FOLLOWING METHOD IS SUGGESTED: (1) TILL SOIL OR SPRAY VEGETATION WITH ROUNDUP®. WHEN USING AN HERBICIDE, ALLOW VEGETATION TO DIE, THEN RAKE OUT THE DEAD DEBRIS. IF PERENNIAL WEEDS SUCH AS BINDWEED ARE PRESENT, USING AN HERBICIDE IS MORE EFFECTIVE THAN TILLING. (2) IRRIGATE TO ENCOURAGE GERMINATION OF WEED SEEDS NEAR THE SURFACE. MOST SEEDS WILL GERMINATE WITHIN TWO WEEKS IF CONSISTENT MOISTURE IS AVAILABLE. DO NOT TILL THE SOIL AGAIN BECAUSE THIS WILL BRING EVEN MORE WEED SEEDS UP TO THE SURFACE. (3) SPRAY ANY NEW GROWTH WITH ROUNDUP®. (4) AFTER RAKING OUT DEAD VEGETATION, ALLOW SOIL TO RECOVER FOR 4 WEEKS BEFORE PLANTING SEE. A RECOVERY PERIOD OF THIS DURATION IS ADVISABLE BECAUSE EXTENSIVE USE OF GLYPHOSATE HERBICIDES MAY CAUSE A DELAY IN GERMINATION AND IN THE VIGOROUS GROWTH OF SEEDLINGS. ONCE THE SEEDS HAVE GERMINATED, FURTHER WEED CONTROL IS USUALLY NECESSARY. IF PRACTICAL, PULL ALL WEEDS AS SOON AS THEY CAN BE IDENTIFIED. OTHER SUCCESSFUL TECHNIQUES ARE SPOT-SPRAYING WITH A GENERAL HERBICIDE OR SELECTIVELY CUTTING WEEDS WITH A STRING TRIMMER. BE SURE TO REMOVE WEEDS BEFORE THEY RESEED. ONCE ESTABLISHED, NATIVE AREAS MAY BE MOWED TWICE A SEASON OR AS REQUIRED TO MINIMIZE WEED GROWTH. FURTHER MOWING ADJACENT TO ROADWAYS AND PARK AREAS MAY BE REQUIRED AS SEASONAL DROUGHT AND FIRE CONDITIONS MAY DICTATE.

# FILING 15 PLANT SCHEDULE

DECIDUOUS TREES	QTY	BOTANICAL NAME	COMMON NAME	ROOT	CALIPER/H.T.
AE	14	ACER PLATANOIDES 'EMERALD QUEEN'	EMERALD QUEEN MAPLE	B & B	2.5" CAL
AS	4	ACER PLATANOIDES 'SCHWEDLER'	SCHWEDLER MAPLE	B & B	2.5" CAL
HAC	21	CELTIS OCCIDENTALIS	COMMON HACKBERRY	B & B	2.5" CAL
GI	22	GLEDITSIA TRIACANTHOS 'IMPERIAL'	IMPERIAL HONEYLOCUST	B & B	2.5" CAL
GS	16	GLEDITSIA TRIACANTHOS INERMIS 'SHADEMASTER' TM	SHADEMASTER LOCUST	B & B	2.5" CAL
GK	5	GYMNOCLADUS DIOICA	KENTUCKY COFFEE TREE	B & B	2.5" CAL
OV	2	OSTRYA VIRGINIANA	AMERICAN HORNBEAM	B & B	2.5" CAL
PO	13	PLATANUS OCCIDENTALIS	AMERICAN SYCAMORE	B & B	2.5" CAL
QB	39	QUERCUS BICOLOR	SWAMP WHITE OAK	B & B	2.5" CAL
QR	1	QUERCUS RUBRA	RED OAK	B & B	2.5" CAL
RAL	3	TILIA AMERICANA 'REDMOND'	REDMOND AMERICAN LINDEN	B & B	2.5" CAL
TG2	19	TILIA CORDATA 'GLENLEVEN'	GLENLEVEN LITTLELEAF LINDEN	B & B	2.5" CAL
TG	17	TILIA CORDATA 'GREENSPIRE'	GREENSPIRE LITTLELEAF LINDEN	B & B	2.5" CAL

EVERGREEN TREES	QTY	BOTANICAL NAME	COMMON NAME	ROOT	CALIPER/H.T.
PSP	34	PINUS FLEXILIS	LIMBER PINE	B & B	6-8" HT
PN	27	PINUS NIGRA	AUSTRIAN BLACK PINE	B & B	6-8" HT
PPI	41	PINUS PONDEROSA	PONDEROSA PINE	B & B	6-8" HT


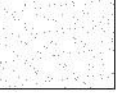
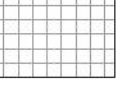


ORNAMENTAL TREES	QTY	BOTANICAL NAME	COMMON NAME	ROOT	CALIPER/H.T.
ACM	9	ACER GINNALA 'COMPACTUM'	COMPACT AMUR MAPLE	B & B	2" CAL
AH	20	ACER TATARICUM 'HOT WINGS'	HOT WINGS TATARIAN MAPLE	B & B	2" CAL
AT	11	ALNUS TENUIFOLIA	THINLEAF ALDER	B & B	2" CAL
WKH	25	CRATAEGUS VIRIDIS 'WINTER KING'	'WINTER KING' HAWTHORN	B & B	2" CAL
SC	44	MALUS X 'SPRING SNOW'	SPRING SNOW CRAB APPLE	B & B	2" CAL

ORNAMENTAL GRASSES	QTY	BOTANICAL NAME	COMMON NAME	SIZE	HEIGHT/WIDTH
CK	474	CALAMAGROSTIS X ACUTIFLORA 'KARL FOERSTER'	FEATHER REED GRASS	1 GAL	4.5' X 2'
BOG	97	HELICTOTRICHON SEMPERVIRENS	BLUE OAT GRASS	1 GAL	3' X 2'
MG	169	MISCANTHUS SINENSIS 'GRACILLIMUS'	MAIDEN GRASS	1 GAL	4' X 5'
MY	89	MISCANTHUS SINENSIS 'YAKU JIMA'	'YAKU JIMA' DWARF MAIDEN GRASS	1 GAL	3' X 3'
PH	14	PANICUM VIRGATUM 'HEAVY METAL'	BLUE SWITCH GRASS	1 GAL	5' X 3'
PH2	25	PENNISETUM ALOPECUROIDES 'HAMELN'	HAMELN DWARF FOUNTAIN GRASS	5 GAL	
PB2	12	PENNISETUM ALOPECUROIDES 'LITTLE BUNNY'	LITTLE BUNNY FOUNTAIN GRASS	1 GAL	1' X 2'

ANNUALS/PERENNIALS	QTY	BOTANICAL NAME	COMMON NAME	SIZE	HEIGHT/WIDTH
AHC	57	AGASTACHE X 'CORANADO RED'	ANISE HYSSOP	1 GAL	2.5' X 3'
EP	224	ECHINACEA PURPUREA	PURPLE CONEFLOWER	1 GAL	2' X 2'
BES	141	RUDBECKIA FULGIDA SULLIVANTII 'GOLDSTURM'	BLACK-EYED SUSAN	1 GAL	1.5' X 1.5'
SP	59	SCABIOSA CAUCASICA 'PERFECTA BLUE'	PINCUSHION FLOWER	1 GAL	2.5' X 1.5'

DECIDUOUS SHRUBS	QTY	BOTANICAL NAME	COMMON NAME	SIZE	HEIGHT/WIDTH
SSB	9	AMELANCHIER ALNIFOLIA 'REGENT'	SASKATOON SERVICEBERRY	5 GAL	12' X 8'
AG	34	AMELANCHIER X GRANDIFLORA 'AUTUMN BRILLIANCE'	'AUTUMN BRILLIANCE' SERVICEBERRY	5 GAL	15' X 10'
CD	159	CARYOPTERIS X CLANDONENSIS 'DARK KNIGHT'	BLUE MIST SHRUB	5 GAL	3' X 4'
CI	148	CEROCARPUS INTRICATUS	LITTLE LEAF MOUNTAIN MAHOGANY	5 GAL	5' X 5'
CB	21	CORNUS SERICEA 'BAILEY'	RED TWIG DOGWOOD	5 GAL	8' X 8'
CD2	8	COTONEASTER DIVARICATUS	SPREADING COTONEASTER	5 GAL	6' X 6'
CH	21	COTONEASTER HORIZONTALIS	ROCK COTONEASTER	5 GAL	3' X 5'
PCS2	134	PENSTEMON STRICTUS	ROCKY MOUNTAIN PENSTEMON	5 GAL	2' X 3'
PJ	5	POTENTILLA FRUTICOSA 'JACKMANII'	JACKMAN'S POTENTILLA	5 GAL	3' X 4'
SCH	59	PRUNUS BESSEYI 'PAWNEE BUTTES'	PAWNEE BUTTES SAND CHERRY	5 GAL	18" X 6'
RHU	20	RHUS AROMATICA 'GRO-LOW'	GRO-LOW FRAGRANT SUMAC	5 GAL	3' X 6'
RT	5	RHUS TRILOBATA	THREE LEAF SUMAC	5 GAL	4' X 5'
RG	7	RIBES AUREUM	GOLDEN CURRANT	5 GAL	4' X 6'
SP2	5	SALIX PURPUREA 'NANA'	DWARF ARCTIC WILLOW	5 GAL	8' X 8'

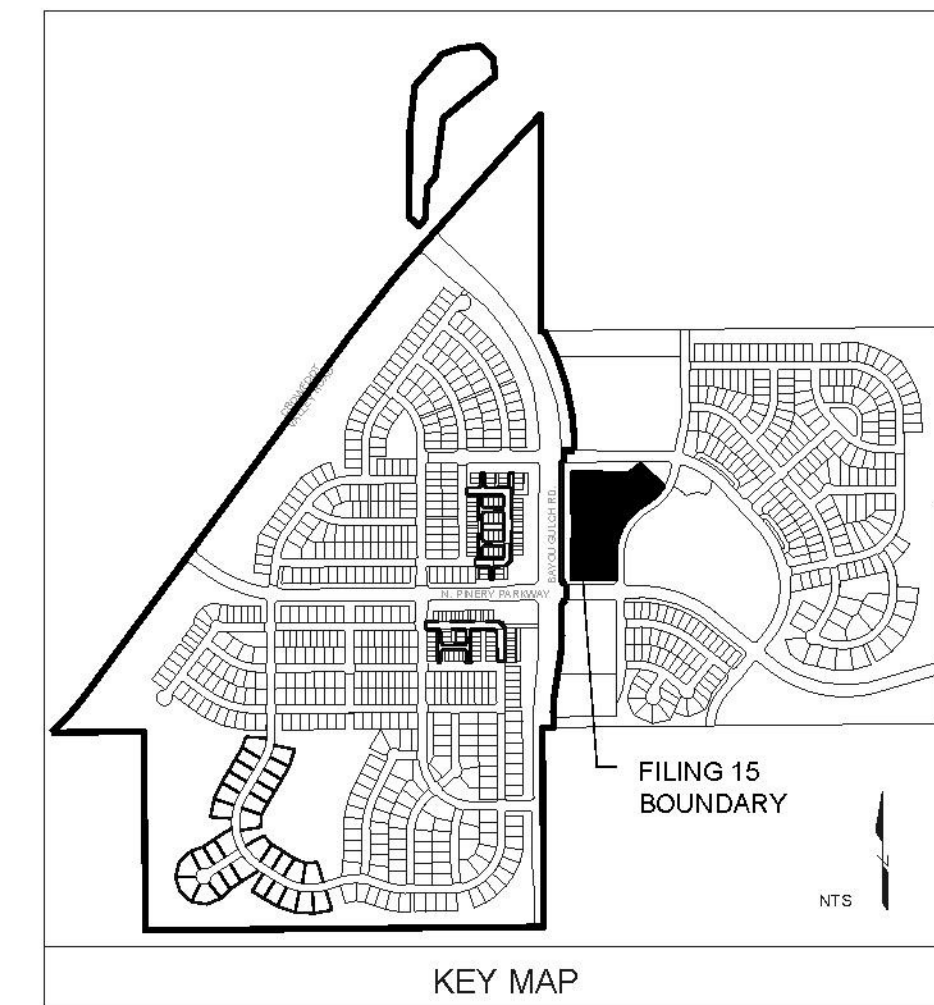
EVERGREEN SHRUBS	QTY	BOTANICAL NAME	COMMON NAME	SIZE	HEIGHT/WIDTH
AE	15	ARCTOSTAPHYLOS X COLORADOENSIS 'CHIEFTAIN'	MANZANITA	5 GAL	2' X 5'
AP	4	ARCTOSTAPHYLOS X COLORADOENSIS 'PANCHITO'	PANCHITO MANZANITA	5 GAL	1.5' X 5'
CSM	112	CYTISUS SCOPARIUS 'MOONLIGHT'	MOONLIGHT BROOM	5 GAL	3' X 5'
EC	32	EUONYMUS FORTUNEI 'COLORATA'	PURPLE-LEAF WINTER CREEPER	5 GAL	2' X 5'
JB	19	JUNIPERUS HORIZONTALIS 'BLUE CHIP'	BLUE CHIP JUNIPER	5 GAL	8" X 10'
JH	28	JUNIPERUS HORIZONTALIS 'HUGHES'	HUGHES JUNIPER	5 GAL	15' X 6'
BUJ	47	JUNIPERUS SABINA 'BUFFALO'	BUFFALO JUNIPER	5 GAL	2' X 6'
BS	78	PINUS MUGO 'SLOWMOUND'	MUGO PINE	5 GAL	2.5' X 5'

GROUND COVERS	QTY	BOTANICAL NAME	COMMON NAME	CONT
	0 SF	BUFFALO GRASS RE: LANDSCAPE NOTES	BUFFALO GRASS	SOD
	152,815 SF	ENVIROTURF RE: LANDSCAPE NOTES	ENVIROTURF	SOD
	864 SF	FIBAR PLAYGROUND MULCH	FIBAR PLAYGROUND MULCH	MULCH
	22,152 SF	ROCK MULCH TAN, 2" DIA. RIVER ROCK 3" DEPTH. RE: LDSCP NOTES	ROCK MULCH TAN, 2" DIA. RIVER ROCK	MULCH
	73,360 SF	SEED MIX 1 TOWN OF PARKER - SEED MIX 1, RE: LANDSCAPE NOTES	SEED MIX 1	SEED

- NOTES:
- DISTURBED AREAS TO BE RE-VEGETATED PER THE GRADING AND EROSION CONTROL PLANS.
  - PER TREE CONSERVATION PLAN, ALL MITIGATED SHRUBS FROM REMOVAL OF EXISTING SHRUB MASSES SHALL BE PLANTED WITHIN THE PROPOSED LANDSCAPE.
  - LANDSCAPE PLACEMENT IN THE TREE LAWN ADJACENT TO LOTS IS NOT FINAL AND MAY CHANGE BASED UPON DRIVEWAY AND UTILITY LOCATIONS.
  - NO FENCES OR STRUCTURES WILL BE ALLOWED WITHIN SIGHT TRIANGLES.
  - SHRUBS AND PLANTINGS WILL BE NO TALLER THAN 2 FEET WITHIN THE SIGHT TRIANGLE.
  - TEMPORARY IRRIGATION FOR ESTABLISHMENT OF NATIVE VEGETATION MUST BE INSTALLED ABOVE GROUND, AND REMOVED IMMEDIATELY AFTER ESTABLISHMENT IS COMPLETE.

### SEED MIXES

TOWN OF PARKER SEED MIX 1	PERCENTAGE	SEED MIX 2	PERCENTAGE
CANADA WILDER	29%	SLENDER WHEATGRASS	22%
CRESTED WHEATGRASS	15%	SODAR STREAMBANK WHEATGRASS	18%
SLENDER WHEATGRASS	15%	ARIZONA FESCUE	13%
ANNUAL RYEGRASS	10%	BLUE GRAMA	13%
SHEEP FESCUE	10%	B	

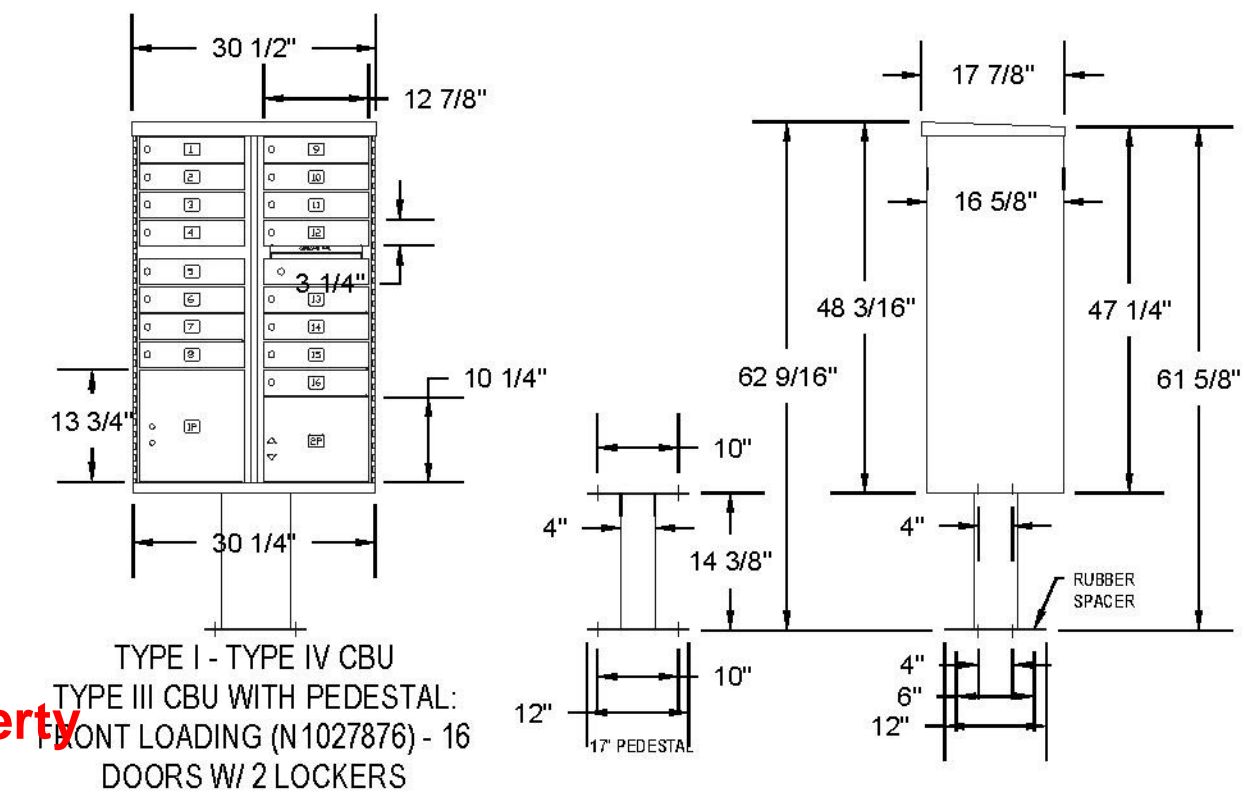


- NOTES:
1. LANDSCAPE MATERIAL AND TREES IN TREE LAWNS ADJACENT TO LOTS ARE RESPONSIBILITY OF HOME BUILDER. STREET TREE LOCATIONS ARE NOT FINAL AND MAY CHANGE BASED UPON DRIVEWAY LOCATION.
  2. NO FENCES OR STRUCTURES WILL BE ALLOWED WITHIN SIGHT TRIANGLES.
  3. SHRUBS & PERENNIALS WITHIN SIGHT TRIANGLES WILL BE NO HIGHER THAN Z.
  4. MAILBOX CLUSTER LOCATIONS ARE CONCEPTUAL ONLY. FINAL LOCATIONS TO BE DETERMINED BY POSTMASTER.
  5. ALL FENCING TO BE INSTALLED AS PART OF FILING 1 OR 9.

**TRAILS AT CROWFOOT**  
FILING 15 LANDSCAPE PLANS  
PARKER, COLORADO

93 shrubs removed from the native property  
property landscaped areas.  
10 evergreen trees added to replace  
removed shrubs.

- Notes:
1. Installation to be completed in accordance with specifications by factory authorized installers.
  2. Contractor to verify concrete pad dimension & construction specifications with USPS before constructing
  3. Contractor to make submittals for mailbox cluster units for review & approval, with pricing info, prior to ordering clusterboxes.



POSTAL PRODUCTS UNLIMITED, INC  
500 W OKLAHOMA AVE.  
MILWAUKEE, WI 53207  
TOLL FREE: 1-800-229-4500  
PHONE: (414) 290-1500  
FAX: (800) 570-0007  
www.mailproducts.com

Note:  
Final Mailbox Locations, Sizes and Specifications to be Coordinated and Approved by the U.S. Post Master.

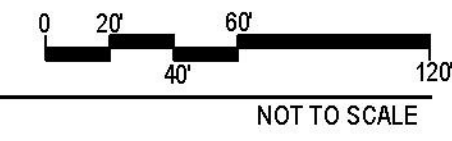
Outdoor Pedestal Mailbox  
Units: 12 Box (F181570-12)  
16 Box (F181570-16)  
Weight: 12 Box = 138 lbs  
16 Box = 161 lbs  
Height: 62" Width: 28.5" Depth: 17.5"

Available from:  
U.S. Mail Supply  
1.800.571.0147  
www.usmailsupply.com

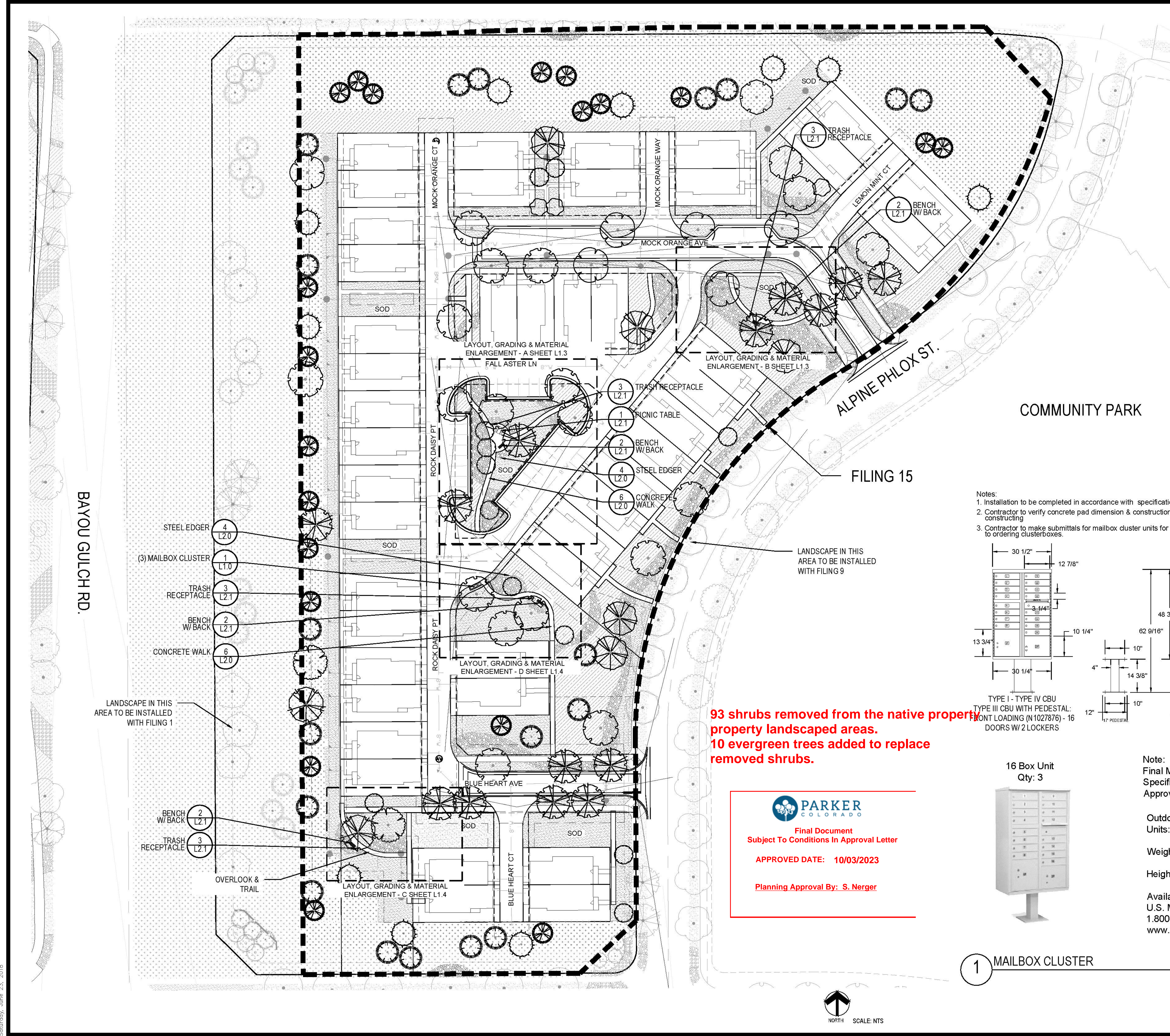
16 Box Unit  
Qty: 3



1 MAILBOX CLUSTER



NOT TO SCALE

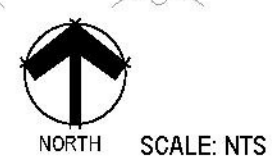


**PARKER**  
COLORADO

Final Document  
Subject To Conditions In Approval Letter

APPROVED DATE: 10/03/2023

Planning Approval By: S. Nerger



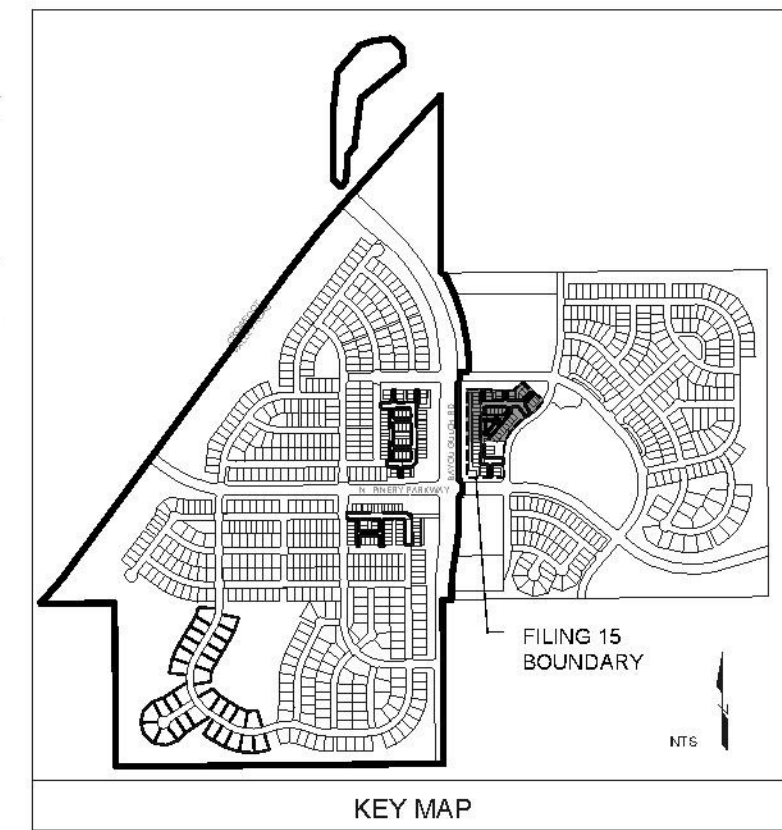
Y:\HSS PANCH LANDSCAPE ARCHITECTURE\CURRENT DWGS\HSS-LDSCP PLANS - FILING-15\_CDS.DWG  
Saturday, June 23, 2018

Drawn by:	BEM, GG, JWD
Checked by:	FGS STAFF
Submittal Date:	05/20/2018
Date:	09/26/2018
Know what's below. Call before you dig.	10/29/2018
	05/25/2020

Sheet Name  
OVERALL LANDSCAPE PLAN

Sheet Number

L1.0



- NOTES:
1. LANDSCAPE MATERIAL AND TREES IN TREE LAWNS ADJACENT TO LOTS ARE RESPONSIBILITY OF HOME BUILDER. STREET TREE LOCATIONS ARE NOT FINAL AND MAY CHANGE BASED UPON DRIVEWAY LOCATION.
  2. NO FENCES OR STRUCTURES WILL BE ALLOWED WITHIN SIGHT TRIANGLES.
  3. SHRUBS & PERENNIALS WITHIN SIGHT TRIANGLES WILL BE NO HIGHER THAN 2'.
  4. MAILBOX CLUSTER LOCATIONS ARE CONCEPTUAL ONLY. FINAL LOCATIONS TO BE DETERMINED BY POSTMASTER.
  5. ALL FENCING TO BE INSTALLED AS PART OF FILING 1 OR 9.

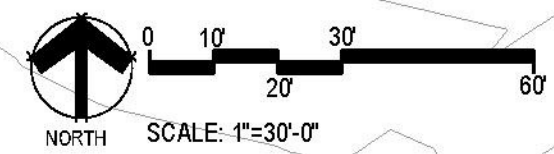
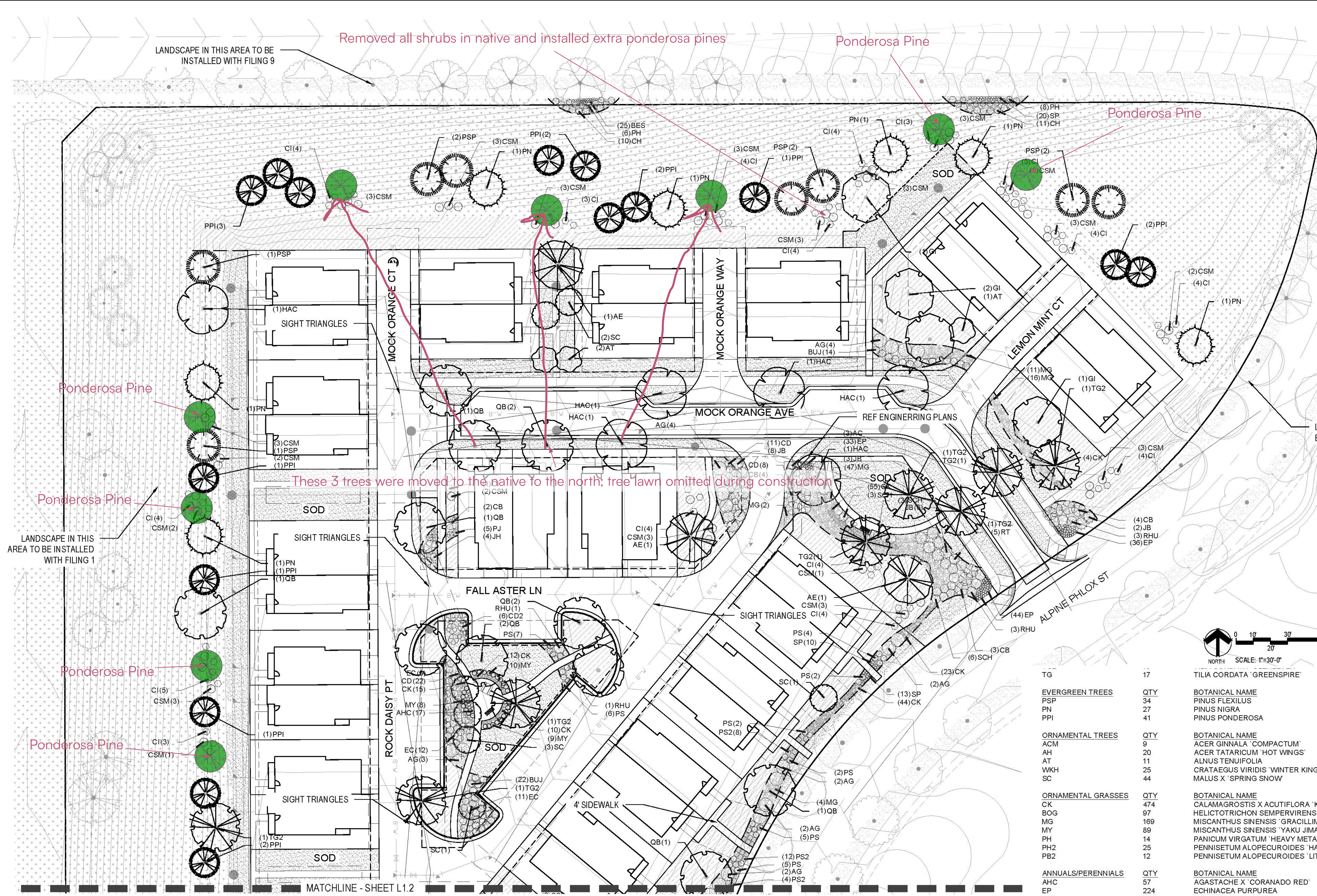


Final Document  
Subject To Conditions In Approval Letter

APPROVED DATE: 10/03/2023

Planning Approval By: S. Nergar

TRAILS AT CROWFOOT  
FILING 15 LANDSCAPE PLANS  
PARKER, COLORADO



QTY	BOTANICAL NAME	COMMON NAME
17	TILIA CORDATA 'GREENSPIRE'	GREENSPIRE LITTLELEAF LINDEN
34	PINUS FLEXILIS	LIMBER PINE
27	PINUS NIGRA	AUSTRIAN BLACK PINE
41	PINUS PONDEROSA	PONDEROSA PINE
9	ACER GINNALIA 'COMPACTUM'	COMPACT AMUR MAPLE
20	ACER TATARICUM 'HOT WINGS'	HOT WINGS TATARIAN MAPLE
11	ALNUS TENUIFOLIA	THINLEAF ALDER
25	CRATAEGUS VIRIDIS 'WINTER KING'	'WINTER KING' HAWTHORN
44	MALUS X 'SPRING SNOW'	SPRING SNOW CRAB APPLE
474	CALAMAGROSTIS X ACUTIFLORA 'KARL FOERSTER'	FEATHER REED GRASS
97	HELICTOTRICHON SEMPERVIRENS	BLUE OAT GRASS
169	MISCANTHUS SINENSIS 'GRACILLIMUS'	MAIDEN GRASS
89	MISCANTHUS SINENSIS 'YAKU JIMA'	YAKU JIMA DWARF MAIDEN GRASS
14	PANICUM VIRGATUM 'HEAVY METAL'	BLUE SWITCH GRASS
25	PENNISETUM ALOPECUROIDES 'HADELN'	HADELN DWARF FOUNTAIN GRASS
12	PENNISETUM ALOPECUROIDES 'LITTLE BUNNY'	LITTLE BUNNY FOUNTAIN GRASS
57	AGASTACHE X 'CORANADO RED'	ANISE HYSSOP
224	ECHINACEA PURPUREA	PURPLE CONEFLOWER
141	RUBEBECKIA FULGIDA SULLIVANTII 'GOLDSTURM'	BLACK-EYED SUSAN
59	SCABIOSA CAUCASICA 'PERFECTA BLUE'	PINCUSHION FLOWER
9	AMELANCHIER ALNIFOLIA 'REGENT'	SASKATOON SERVICEBERRY
34	AMELANCHIER X GRANDIFLORA 'AUTUMN BRILLIANCE'	'AUTUMN BRILLIANCE' SERVICEBERRY
159	CARYOPTERIS X CLANDONENSIS 'DARK KNIGHT'	BLUE MIST SHRUB
148	CERCOCARPUS INTRICATUS	LITTLE LEAF MOUNTAIN MAHOGANY
21	CORNUS SERICEA 'BAILEY'	RED TWIG DOGWOOD
6	COTONEASTER DIVARICATUS	SPREADING COTONEASTER
21	COTONEASTER HORIZONTALIS	ROCK COTONEASTER
134	PENSTEMON STRICTUS	ROCKY MOUNTAIN PENSTEMON
4	POTENTILLA FRUTICOSA 'JACKMANII'	JACKMAN'S POTENTILLA
59	PRUNUS BESSEYI 'PAWNEE BUTTES'	PAWNEE BUTTES SAND CHERRY
20	RHUS AROMATICA 'GRO-LOW'	GRO-LOW FRAGRANT SUMAC
5	RHUS TRILOBATA	THREE LEAF SUMAC
7	RIBES AUREUM	GOLDEN CURRANT
5	SALIX PURPUREA 'NANA'	DWARF ARCTIC WILLOW
15	ARCTOSTAPHYLOS X COLORADOENSIS 'CHIEFTAIN'	MANZANITA
4	ARCTOSTAPHYLOS X COLORADOENSIS 'PANCHITO'	PANCHITO MANZANITA
112	CYTISUS SCOPARIUS 'MOONLIGHT'	MOONLIGHT BROOM
32	EUONYMUS FORTUNEI 'COLORATA'	PURPLE-LEAF WINTER CREEPER
19	JUNIPERUS HORIZONTALIS 'BLUE CHIP'	BLUE CHIP JUNIPER
28	JUNIPERUS HORIZONTALIS 'HIGHLIFE'	HIGHLIFE JUNIPER

FILING 15 PLANT SCHEDULE

QTY	BOTANICAL NAME	COMMON NAME
14	ACER PLATANOIDES 'EMERALD QUEEN'	EMERALD QUEEN MAPLE
4	ACER PLATANOIDES 'SCHWEDLERI'	SCHWEDLER MAPLE
21	CELTIS OCCIDENTALIS	COMMON HACKBERRY
22	GLEDITSIA TRIACANTHOS 'IMPERIAL'	IMPERIAL HONEYLOCUST
16	GLEDITSIA TRIACANTHOS INERMIS 'SHADEMASTER' TM	SHADEMASTER LOCUST
5	GYMNOCLADUS DIOICA	KENTUCKY COFFEE TREE
2	OSTRYA VIRGINIANA	AMERICAN HORNBEEAM
13	PLATANUS OCCIDENTALIS	AMERICAN SYCAMORE
39	QUERCUS BICOLOR	SWAMP WHITE OAK
1	QUERCUS RUBRA	RED OAK
3	TILIA AMERICANA 'REDMOND'	REDMOND AMERICAN LINDEN
19	TILIA CORDATA 'GLENLEVEN'	GLENLEVEN LITTLELEAF LINDEN

1 LANDSCAPE PLAN-FILING 15

SCALE: 1"=30'-0"

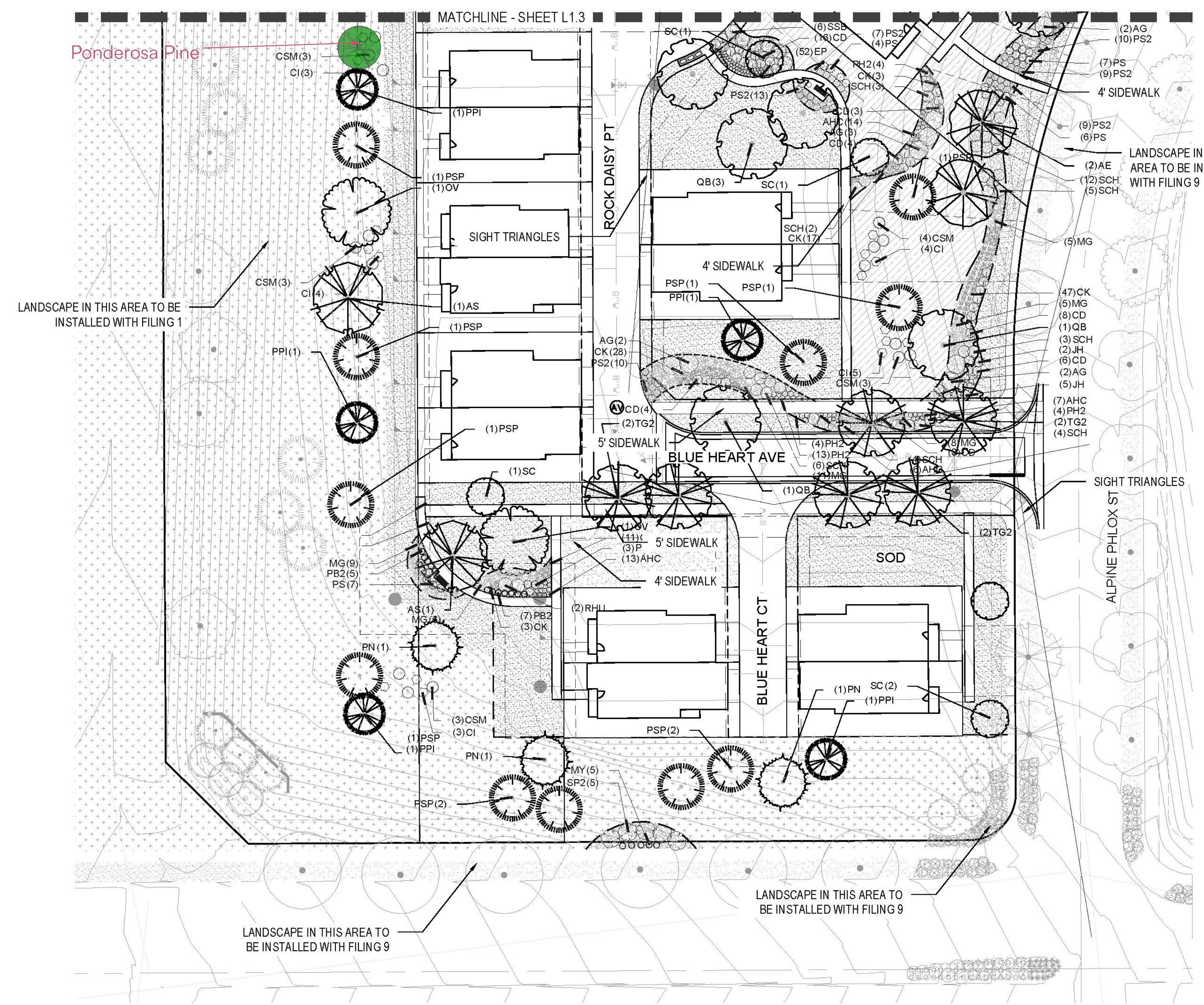
Y:\HESSE RANCH\LANDSCAPE ARCHITECTURE\CURRENT DWGS\HESSE-LDSCP PLANS - FILING-15\_CDS.DWG  
Saturday, June 23, 2018

Drawn by: BEM, GG, JWD  
Checked by: PGS STAFF  
Submitted Date: 06/20/2018  
09/26/2018  
10/29/2018  
06/25/2020  
Know what's below.  
Call before you dig.  
**811**

Sheet Name  
LANDSCAPE PLAN

Sheet Number

L1.1

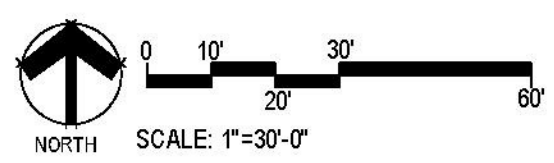


22,152 SF	ROCK MULCH TAN, 2" DIA. RIVER ROCK 3" DEPTH, RE. LDSCP NOTES	ROCK MULCH TAN, 2" DIA. RIVER ROCK	MULCH
73,360 SF	SEED MIX 1 TOWN OF PARKER - SEED MIX 1, RE. LANDSCAPE NOTES	SEED MIX 1	SEED

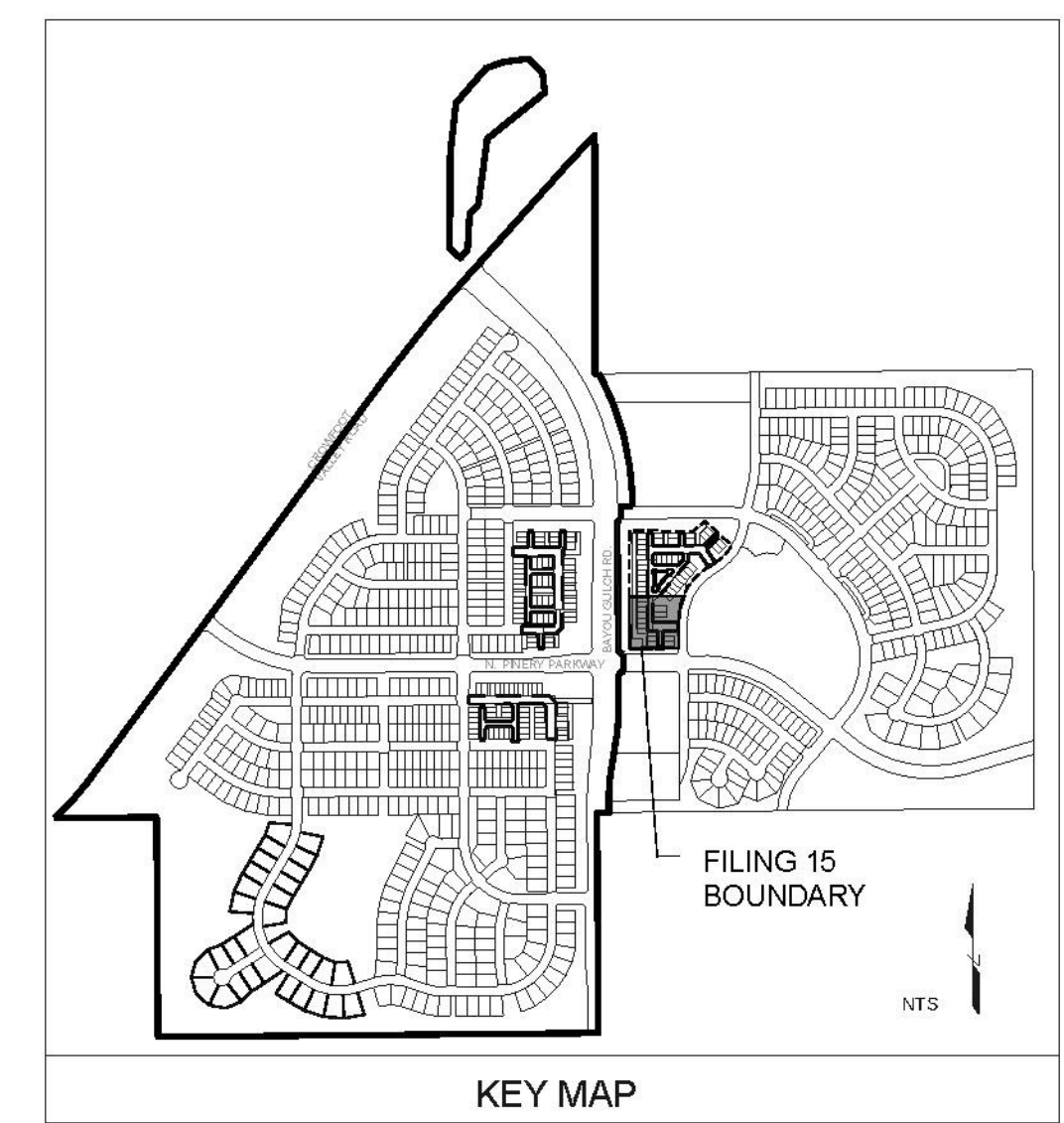
**FILING 15 PLANT SCHEDULE**

DECIDUOUS TREES	QTY	BOTANICAL NAME	COMMON NAME	ROOT	CALIPER/HT.
AE	14	ACER PLATANOIDES 'EMERALD QUEEN'	EMERALD QUEEN MAPLE	B & B	2.5" CAL
AS	4	ACER PLATANOIDES 'SCHWEDLERI'	SCHWEDLER MAPLE	B & B	2.5" CAL
AC	21	ACER TATARICUM 'HOT WINGS'	HOT WINGS TATARIAN MAPLE	B & B	2.5" CAL
3I	22	CELTIS OCCIDENTALIS	COMMON HACKBERRY	B & B	2.5" CAL
3S	16	GLEDITSIA TRIACANTHOS 'IMPERIAL'	IMPERIAL HONEYLOCUST	B & B	2.5" CAL
3K	5	GLEDITSIA TRIACANTHOS 'INERMIS 'SHADEMASTER' TM	SHADEMASTER LOCUST	B & B	2.5" CAL
3V	2	GYMNOCLADUS DIOICA	KENTUCKY COFFEE TREE	B & B	2.5" CAL
3O	13	OSTRYA VIRGINIANA	AMERICAN HORNBEAM	B & B	2.5" CAL
3B	39	PLATANUS OCCIDENTALIS	AMERICAN SYCAMORE	B & B	2.5" CAL
3R	1	QUERCUS BICOLOR	SWAMP WHITE OAK	B & B	2.5" CAL
3AL	3	QUERCUS RUBRA	RED OAK	B & B	2.5" CAL
3GZ	19	TILIA AMERICANA 'REDMOND'	REDMOND AMERICAN LINDEN	B & B	2.5" CAL
3G	17	TILIA CORDATA 'GLENLEVEN'	GLENLEVEN LITTLELEAF LINDEN	B & B	2.5" CAL
		TILIA CORDATA 'GREENSPIRE'	GREENSPIRE LITTLELEAF LINDEN	B & B	2.5" CAL
EVERGREEN TREES	QTY	BOTANICAL NAME	COMMON NAME	ROOT	CALIPER/HT.
3SP	34	PINUS FLEXILIS	LIMBER PINE	B & B	6-8' HT
3N	27	PINUS NIGRA	AUSTRIAN BLACK PINE	B & B	6-8' HT
3PI	41	PINUS PONDEROSA	PONDEROSA PINE	B & B	6-8' HT
ORNAMENTAL TREES	QTY	BOTANICAL NAME	COMMON NAME	ROOT	CALIPER/HT.
4CM	9	ACER GINNALA 'COMPACTUM'	COMPACT AMUR MAPLE	B & B	2" CAL
4H	20	ACER TATARICUM 'HOT WINGS'	HOT WINGS TATARIAN MAPLE	B & B	2" CAL
4T	11	ALNUS TENUIFOLIA	THINLEAF ALDER	B & B	2" CAL
4KH	25	CRATAEGUS VIRIDIS 'WINTER KING'	'WINTER KING' HAWTHORN	B & B	2" CAL
4C	44	MALUS X 'SPRING SNOW'	SPRING SNOW CRAB APPLE	B & B	2" CAL
ORNAMENTAL GRASSES	QTY	BOTANICAL NAME	COMMON NAME	SIZE	HEIGHT/WIDTH
4CK	474	CALAMAGROSTIS X ACUTIFLORA 'KARL FOERSTER'	FEATHER REED GRASS	1 GAL	4.5' X 2'
3OG	97	HELICTOTRICHON SEMPERVIRENS	BLUE OAT GRASS	1 GAL	3' X 2'
4G	169	MISCANTHUS SINENSIS 'GRACILLIMUS'	MAIDEN GRASS	1 GAL	4' X 5'
4Y	89	MISCANTHUS SINENSIS 'YAKU JIMA'	'YAKU JIMA' DWARF MAIDEN GRASS	1 GAL	3' X 3'
4H	14	PANICUM VIRGATUM 'HEAVY METAL'	BLUE SWITCH GRASS	1 GAL	5' X 3'
4H2	25	PENNISETUM ALOPECUROIDES 'HA MELN'	HA MELN DWARF FOUNTAIN GRASS	5 GAL	
4B2	12	PENNISETUM ALOPECUROIDES 'LITTLE BUNNY'	LITTLE BUNNY FOUNTAIN GRASS	1 GAL	1' X 2'
ANNUALS/PERENNIALS	QTY	BOTANICAL NAME	COMMON NAME	SIZE	HEIGHT/WIDTH
4HC	57	AGASTACHE X 'CORANADO RED'	ANISE HYSSOP	1 GAL	2.5' X 3'
4P	224	ECHINACEA PURPUREA	PURPLE CONEFLOWER	1 GAL	2' X 2'
4ES	141	RUDBECKIA FULGIDA SULLIVANTII 'GOLDSTURM'	BLACK-EYED SUSAN	1 GAL	1.5' X 1.5'
4P	59	SCABIOSA CAUCASICA 'PERFECTA BLUE'	PINCUSHION FLOWER	1 GAL	2.5' X 1.5'
DECIDUOUS SHRUBS	QTY	BOTANICAL NAME	COMMON NAME	SIZE	HEIGHT/WIDTH
4SSB	9	AMELANCHIER ALNIFOLIA 'REGENT'	SASKATOON SERVICEBERRY	5 GAL	12' X 8'
4G	34	AMELANCHIER X GRANDIFLORA 'AUTUMN BRILLIANCE'	'AUTUMN BRILLIANCE' SERVICEBERRY	5 GAL	15' X 10'
4D	159	CARYOPTERIS X CLANDONENSIS 'DARK KNIGHT'	BLUE MIST SHRUB	5 GAL	3' X 4'
4I	148	CERCOCARPUS INTRICATUS	LITTLE LEAF MOUNTAIN MAHOGANY	5 GAL	5' X 5'
4B	21	CORNUS SERICEA 'BAILEY'	RED TWIG DOGWOOD	5 GAL	8' X 8'
4D2	6	COTONEASTER DIVARICATUS	SPREADING COTONEASTER	5 GAL	6' X 6'
4H	21	COTONEASTER HORIZONTALIS	ROCK COTONEASTER	5 GAL	3' X 5'
4S2	134	PENSTEMON STRICTUS	ROCKY MOUNTAIN PENSTEMON	5 GAL	2' X 3'
4J	5	POTENTILLA FRUTICOSA 'JACKMANII'	JACKMAN'S POTENTILLA	5 GAL	3' X 4'
4SCH	59	PRUNUS BESSEYI 'PAWNEE BUTTES'	'PAWNEE BUTTES' SAND CHERRY	5 GAL	18" X 6"
4HU	20	RHUS AROMATICA 'GRO-LOW'	GRO-LOW FRAGRANT SUMAC	5 GAL	3' X 6"
4T	5	RHUS TRILOBATA	THREE LEAF SUMAC	5 GAL	4' X 5'
4G	7	RIBES AUREUM	GOLDEN CURRANT	5 GAL	4' X 6"
4P2	5	SALIX PURPUREA 'NANA'	DWARF ARCTIC WILLOW	5 GAL	8' X 8"
EVERGREEN SHRUBS	QTY	BOTANICAL NAME	COMMON NAME	SIZE	HEIGHT/WIDTH
4C	15	ARCTOSTAPHYLOS X COLORADOENSIS 'CHIEFTAIN'	MANZANITA	5 GAL	2' X 5'
4P	4	ARCTOSTAPHYLOS X COLORADOENSIS 'PANCHITO'	PANCHITO MANZANITA	5 GAL	1.5' X 5'
4SM	112	CYTISUS SCOPARIUS 'MOONLIGHT'	'MOONLIGHT' BROOM	5 GAL	3' X 5'
4C	32	EUONYMUS FORTUNEI 'COLORATA'	PURPLE-LEAF WINTER CREEPER	5 GAL	2' X 5'
4B	19	JUNIPERUS HORIZONTALIS 'BLUE CHIP'	BLUE CHIP JUNIPER	5 GAL	8" X 10"
4H	28	JUNIPERUS HORIZONTALIS 'HUGHES'	HUGHES JUNIPER	5 GAL	1.5' X 6"

1 LANDSCAPE PLAN-FILING 15  
 SCALE: 1"=30'-0"



- NOTES:
- LANDSCAPE MATERIAL AND TREES IN TREE LAWNS ADJACENT TO LOTS ARE RESPONSIBILITY OF HOME BUILDER. STREET TREE LOCATIONS ARE NOT FINAL AND MAY CHANGE BASED UPON DRIVEWAY LOCATION.
  - NO FENCES OR STRUCTURES WILL BE ALLOWED WITHIN SIGHT TRIANGLES.
  - SHRUBS & PERENNIALS WITHIN SIGHT TRIANGLES WILL BE NO HIGHER THAN 7'.
  - MAILBOX CLUSTER LOCATIONS ARE CONCEPTUAL ONLY. FINAL LOCATIONS TO BE DETERMINED BY POSTMASTER.
  - ALL FENCING TO BE INSTALLED AS PART OF FILING 1 OR 9.



  
**PARKER**  
 COLORADO

Final Document  
 Subject To Conditions In Approval Letter

APPROVED DATE: 10/03/2023

Planning Approval By: S. Nerger

Y:\HESSE PANCHI\LANDSCAPE ARCHITECTURE\CURRENT DWGS\HESSE-LDSCP PLANS - FILING-15\_CDS.DWG  
 Saturday, June 23, 2018