

Common Area Plant Material Scope Revised:
 - 16 Little Bunny Fountain Grass
 - 8 Alpine Currants
 - 6 Russian Sage
 Blue Area Shows the revised footprint of the bed

This tree Does not exist, this was removed due to the development of the lot, and as a result there was not enough room to accommodate this tree.

These two Trees in the ROW now

LANDSCAPE CALCULATIONS

| | REQUIRED | PROVIDED |
|---|------------|------------|
| STREET TREES | | |
| 1 TREE/ 40 LF | 38 TREES | 38 TREES |
| MINIMUM SITE LANDSCAPING STANDARDS | | |
| SITE AREA: 694,869 SF | 104,109 SF | 705,365 SF |
| 15% TOTAL SITE AREA | | |

| NO. | REVISION | BY | DATE | APPR |
|-----|----------|----|------|------|
| | | | | |

Kimley»Horn
 2020 KIMLEY-HORN AND ASSOCIATES, INC.
 4582 South Ulster Street, Suite 1500
 Denver, Colorado 80237 (303) 228-2300

DESIGNED BY: NBB
 DRAWN BY: NBB
 CHECKED BY: CPH
 DATE: 04/24/20

PARKER AND PINE FILING 1
 PARKER, CO
 CONSTRUCTION DOCUMENTS
 LANDSCAPE PLAN

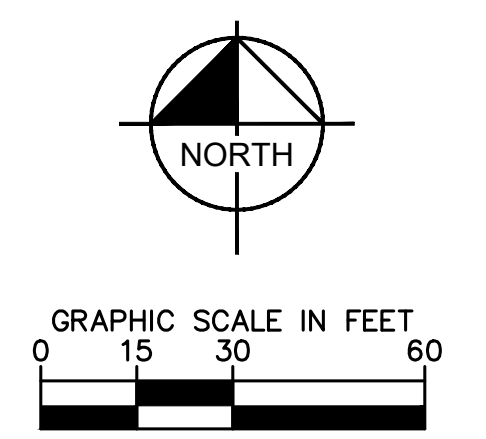
PRELIMINARY
 FOR REVIEW ONLY
 NOT FOR CONSTRUCTION
Kimley»Horn
 Kimley-Horn and Associates, Inc.
 PROJECT NO.
 096502001
 DRAWING NAME
 096502001LA

L1.1

PLANT SCHEDULE

| TREES | CODE | BOTANICAL NAME | COMMON NAME |
|--------|------|----------------------------------|------------------------------|
| | GP | GINKGO BILOBA 'PRINCETON SENTRY' | PRINCETON SENTRY GINKGO |
| | PA3 | PYRUS CALLERYANA 'ARISTOCRAT' TM | ARISTOCRAT FLOWERING PEAR |
| | QR | QUERCUS ROBUR | ENGLISH OAK |
| | TG | TILIA CORDATA 'GREENSPIRE' | GREENSPIRE LITTLELEAF LINDEN |
| | UA | ULMUS X 'ACCOLADE' | ACCOLADE ELM |
| SHRUBS | CODE | BOTANICAL NAME | COMMON NAME |
| | JH | JUNIPERUS HORIZONTALIS | CREEPING JUNIPER |
| | PA2 | PEROVSKIA X 'LITTLE SPIRE' | LITTLE SPIRE RUSSIAN SAGE |

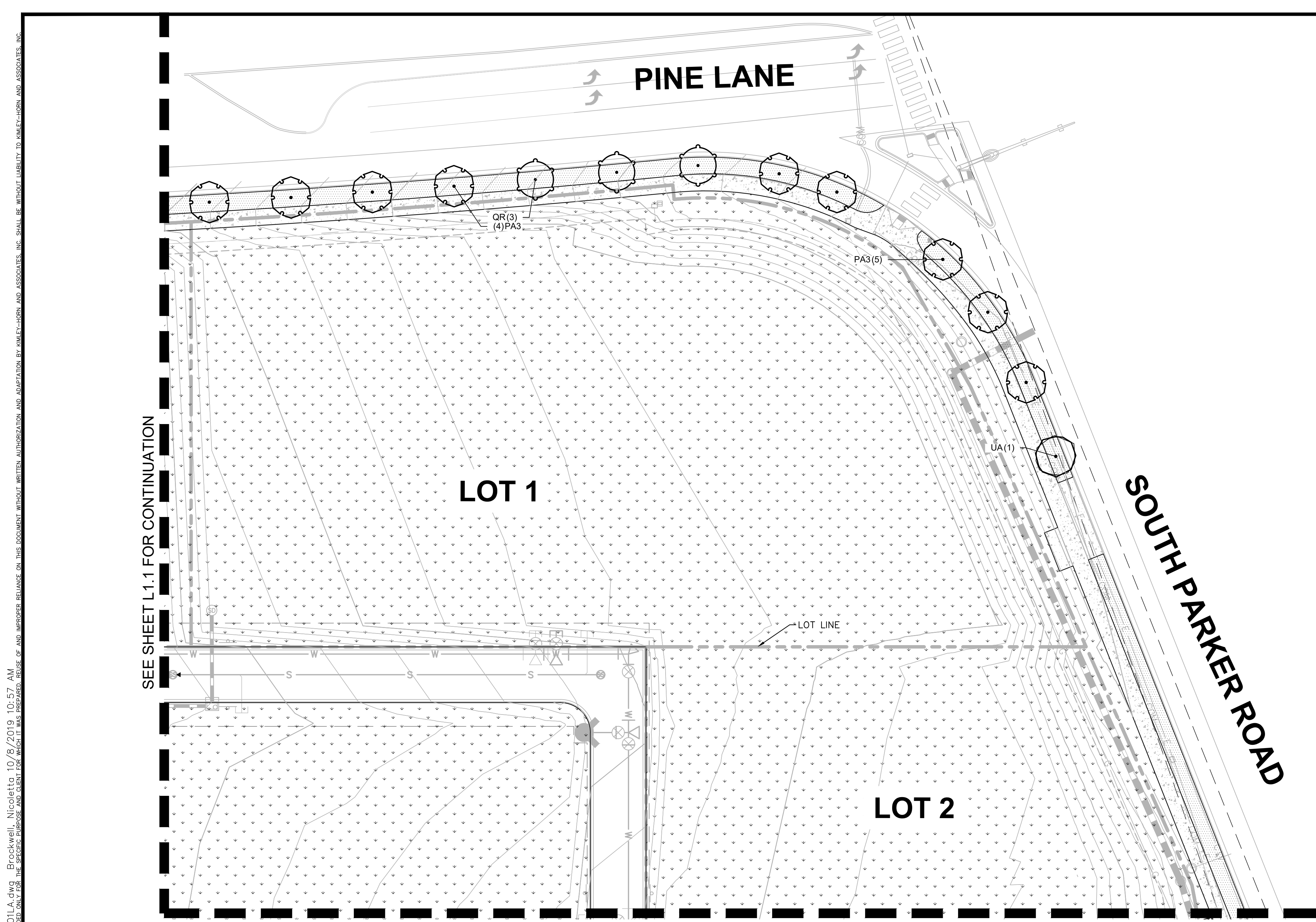
| GROUND COVERS | CODE | BOTANICAL NAME | COMMON NAME |
|---------------|------|---|-----------------------------|
| | PB | PENNISETUM ALOPECUROIDES 'LITTLE BUNNY' | LITTLE BUNNY FOUNTAIN GRASS |
| | RA | RIBES ALPINUM 'GREEN MOUND' | GREEN MOUND ALPINE CURRANT |
| | KB | KEN-TEX BLUEGRASS | KEN-TEX BLUEGRASS |
| | RM | RIVER ROCK MULCH 2-6" | 3" DEPTH |
| | SM2 | TOWN OF PARKER SEED MIX 3 | TOWN OF PARKER SEED MIX 3 |



L:\parker\096502001 - revised\parker\096502001LA.dwg Brockwell, Nicholas 10/6/2019 10:57 AM
 THIS DOCUMENT, TOGETHER WITH THE CONCEPTS AND DESIGNS PRESENTED HEREIN, AS AN INSTRUMENT OF SERVICE IS INTENDED ONLY FOR THE SPECIFIC PROJECT AND CLIENT FOR WHICH IT WAS PREPARED. REVIEW OF AND IMPROPER RELIANCE ON THIS DOCUMENT WITHOUT WRITTEN AUTHORIZATION AND ADAPTATION BY KIMLEY-HORN AND ASSOCIATES, INC. SHALL BE WITHOUT LIABILITY TO KIMLEY-HORN AND ASSOCIATES, INC.

SEE SHEET L1.2 FOR CONTINUATION

SEE SHEET L1.3 FOR CONTINUATION

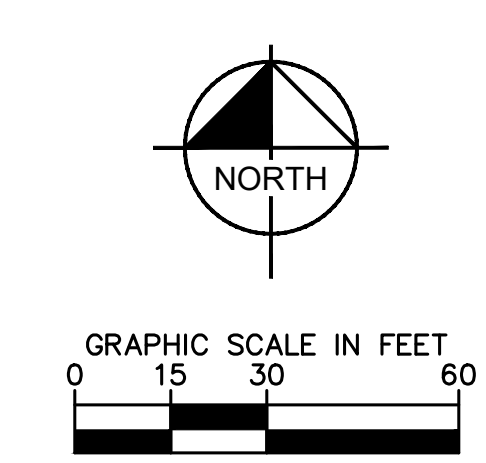


PLANT SCHEDULE

| TREES | CODE | BOTANICAL NAME | COMMON NAME |
|--------|------|----------------------------------|------------------------------|
| | GP | GINKGO BILOBA 'PRINCETON SENTRY' | PRINCETON SENTRY GINKGO |
| | PA3 | PYRUS CALLERYANA 'ARISTOCRAT' TM | ARISTOCRAT FLOWERING PEAR |
| | QR | QUERCUS ROBUR | ENGLISH OAK |
| | TG | TILIA CORDATA 'GREENSPIRE' | GREENSPIRE LITTLELEAF LINDEN |
| | UA | ULMUS X 'ACCOLADE' | ACCOLADE ELM |
| SHRUBS | CODE | BOTANICAL NAME | COMMON NAME |
| | JH | JUNIPERUS HORIZONTALIS | CREEPING JUNIPER |
| | PA2 | PEROVSKIA X 'LITTLE SPIRE' | LITTLE SPIRE RUSSIAN SAGE |

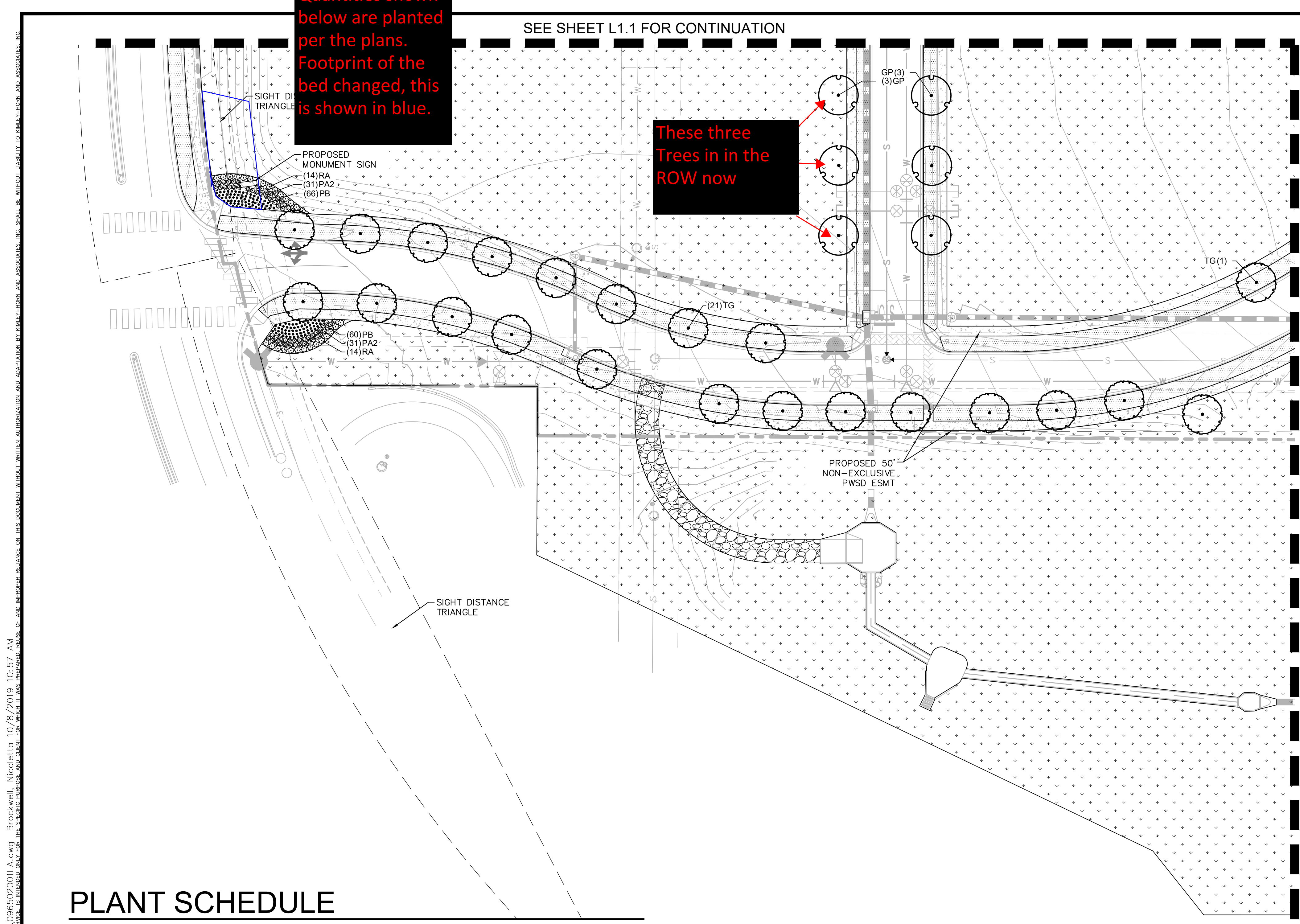
GROUND COVERS

| CODE | BOTANICAL NAME | COMMON NAME | |
|------|----------------|---|-----------------------------|
| | PB | PENNISETUM ALOPECUROIDES 'LITTLE BUNNY' | LITTLE BUNNY FOUNTAIN GRASS |
| | RA | RIBES ALPINUM 'GREEN MOUND' | GREEN MOUND ALPINE CURRANT |
| | KB | KEN-TEX BLUEGRASS | KEN-TEX BLUEGRASS |
| | RM | RIVER ROCK MULCH 2-6" | 3" DEPTH |
| | SM2 | TOWN OF PARKER SEED MIX 3 | TOWN OF PARKER SEED MIX 3 |



k:\gen_civil\096502001\mimed use parker rd\CADD\plansheets\096502001LA.dwg Brockwell, Nicoletta 10/8/2019 10:57 AM
 2020 KIMLEY-HORN AND ASSOCIATES, INC. ALL RIGHTS RESERVED. NO PART OF THIS DOCUMENT SHALL BE REPRODUCED OR TRANSMITTED IN ANY FORM OR BY ANY MEANS, ELECTRONIC OR MECHANICAL, WITHOUT WRITTEN PERMISSION FROM KIMLEY-HORN AND ASSOCIATES, INC.

| | |
|--|---|
| | |
| 2020 KIMLEY-HORN AND ASSOCIATES, INC. 4562 South Ulster Street, Suite 1500 Denver, Colorado 80237 (303) 228-2300 | |
| DESIGNED BY: NBB DRAWN BY: NBB CHECKED BY: CPH DATE: 04/24/20 | NO. _____ BY _____ DATE _____ REVISION _____ |
| PARKER AND PINE FILING 1 PARKER, CO CONSTRUCTION DOCUMENTS LANDSCAPE PLAN | |
| PRELIMINARY FOR REVIEW ONLY NOT FOR CONSTRUCTION | |
| PROJECT NO. 096502001 | |
| DRAWING NAME 096502001LA | |
| L1.2 | |

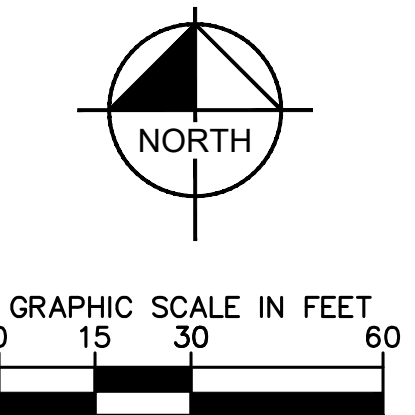


SEE SHEET L1.4 FOR CONTINUATION

PLANT SCHEDULE

| TREES | CODE | BOTANICAL NAME | COMMON NAME |
|--------|------|----------------------------------|------------------------------|
| | GP | GINKGO BILOBA 'PRINCETON SENTRY' | PRINCETON SENTRY GINKGO |
| | PA3 | PYRUS CALLERYANA 'ARISTOCRAT' TM | ARISTOCRAT FLOWERING PEAR |
| | QR | QUERCUS ROBUR | ENGLISH OAK |
| | TG | TILIA CORDATA 'GREENSPIRE' | GREENSPIRE LITTLELEAF LINDEN |
| | UA | ULMUS X 'ACCOLADE' | ACCOLADE ELM |
| SHRUBS | CODE | BOTANICAL NAME | COMMON NAME |
| | JH | JUNIPERUS HORIZONTALIS | CREEPING JUNIPER |
| | PA2 | PEROVSKIA X 'LITTLE SPIRE' | LITTLE SPIRE RUSSIAN SAGE |

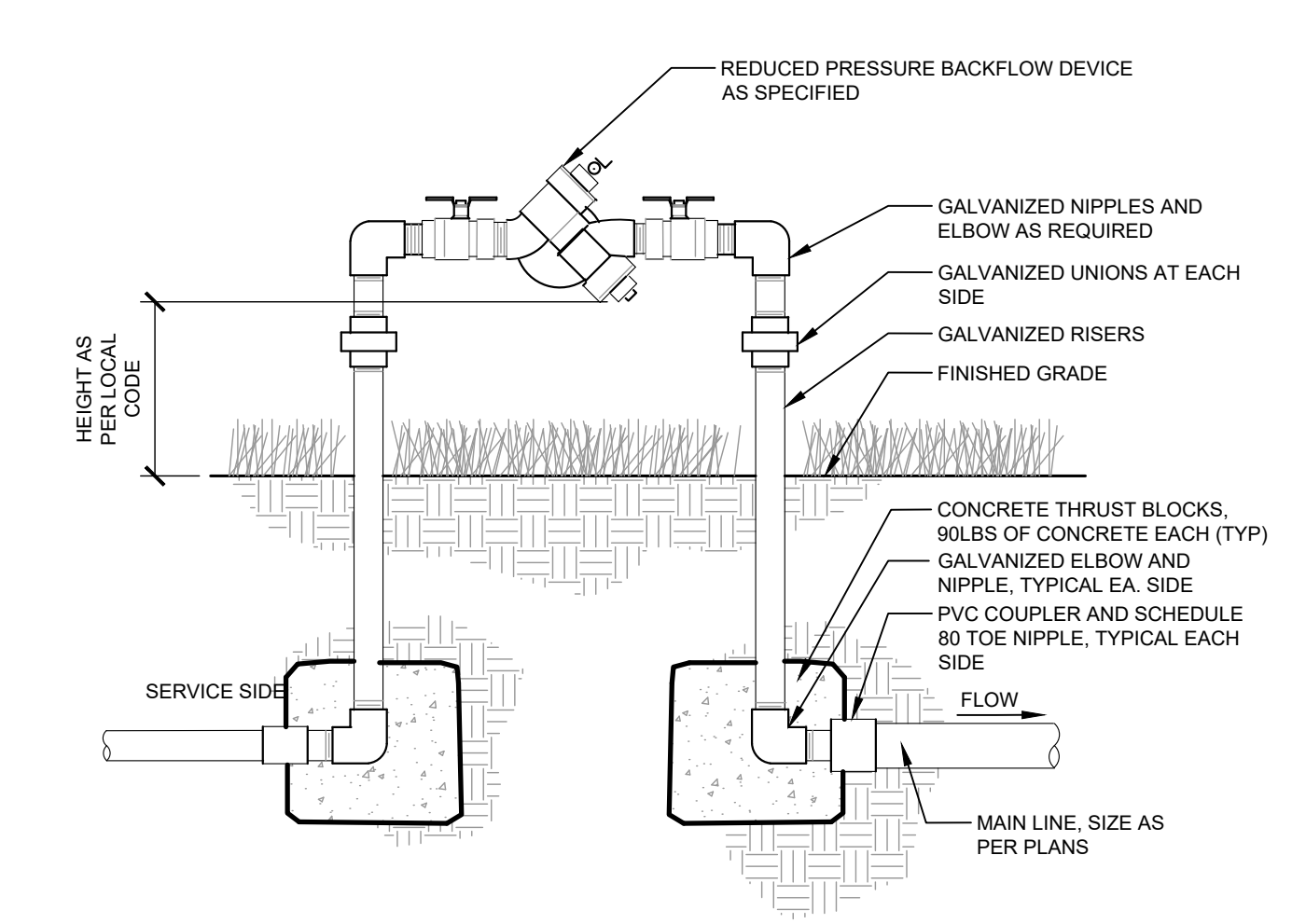
| GROUND COVERS | CODE | BOTANICAL NAME | COMMON NAME |
|---------------|------|--|-----------------------------|
| | PB | PENNISSETUM ALOPECUROIDES 'LITTLE BUNNY' | LITTLE BUNNY FOUNTAIN GRASS |
| | RA | RIBES ALPNUM 'GREEN MOUND' | GREEN MOUND ALPINE CURRANT |
| | KB | KEN-TEX BLUEGRASS | KEN-TEX BLUEGRASS |
| | RM | RIVER ROCK MULCH 2-6" | 3" DEPTH |
| | SM2 | TOWN OF PARKER SEED MIX 3 | TOWN OF PARKER SEED MIX 3 |



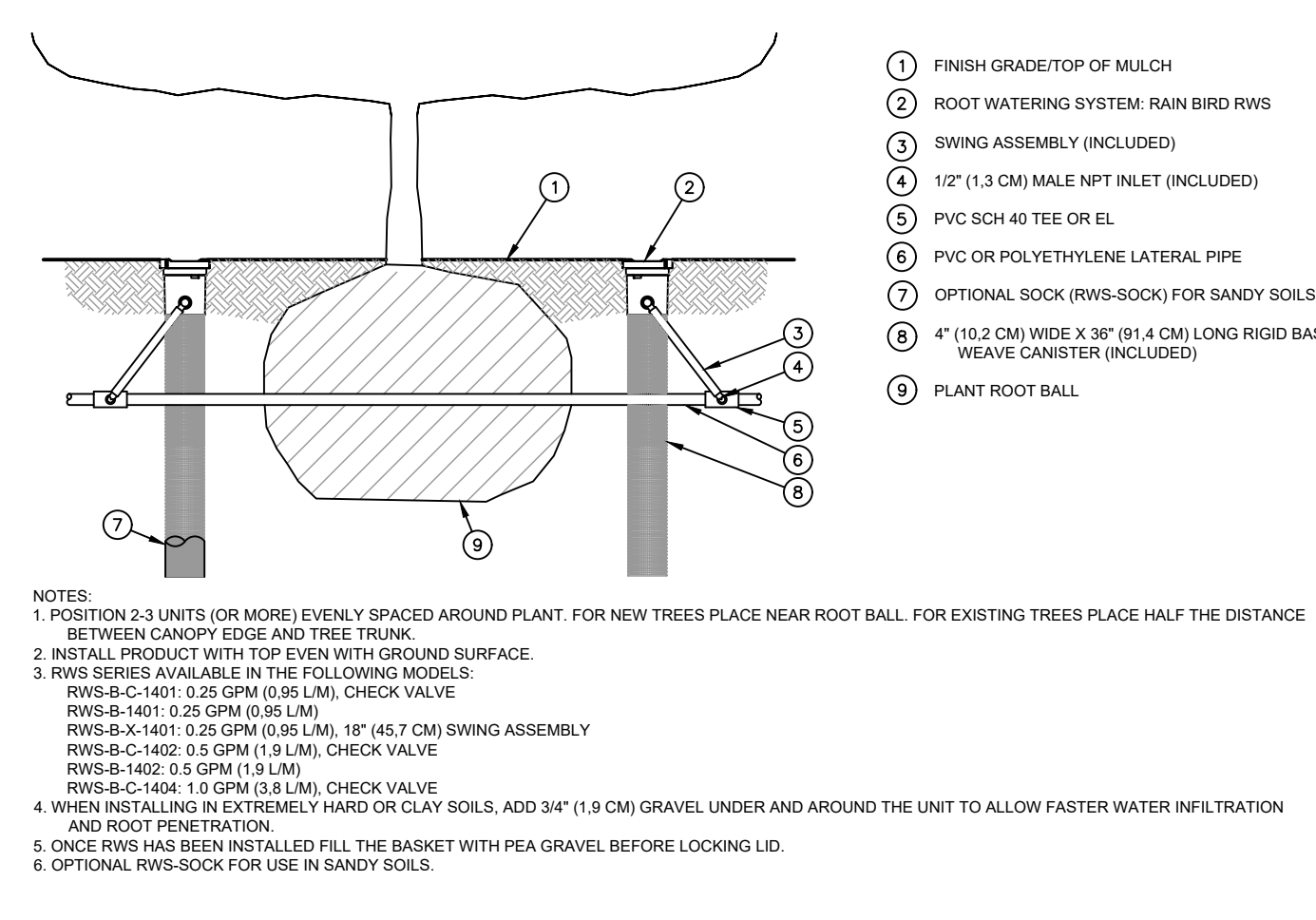
k:\den_civil\096502001\mixed use parker rd\CADD\plansheets\096502001LA.dwg Brockwell, Nicoletta 10/8/2019 10:57 AM

| <p>2020 KIMLEY-HORN AND ASSOCIATES, INC. 4562 South Ulster Street, Suite 1500 Denver, Colorado 80237 (303) 728-2300</p> | <table border="1" style="width: 100%; border-collapse: collapse;"> <tr> <th>NO.</th> <th>REVISION</th> <th>BY</th> <th>DATE</th> <th>APPR.</th> </tr> <tr> <td> </td> <td> </td> <td> </td> <td> </td> <td> </td> </tr> </table> | NO. | REVISION | BY | DATE | APPR. | | | | | |
|---|--|-----|----------|-------|------|-------|--|--|--|--|--|
| NO. | REVISION | BY | DATE | APPR. | | | | | | | |
| | | | | | | | | | | | |
| <p>DESIGNED BY: NBB DRAWN BY: NBB CHECKED BY: CPH DATE: 04/24/20</p> | | | | | | | | | | | |
| <p>PARKER AND PINE FILING 1 PARKER, CO CONSTRUCTION DOCUMENTS LANDSCAPE PLAN</p> | | | | | | | | | | | |
| <p>PRELIMINARY FOR REVIEW ONLY NOT FOR CONSTRUCTION</p> | | | | | | | | | | | |
| <p>PROJECT NO. 096502001</p> <p>DRAWING NAME 096502001LA</p> | | | | | | | | | | | |
| <p>L1.3</p> | | | | | | | | | | | |

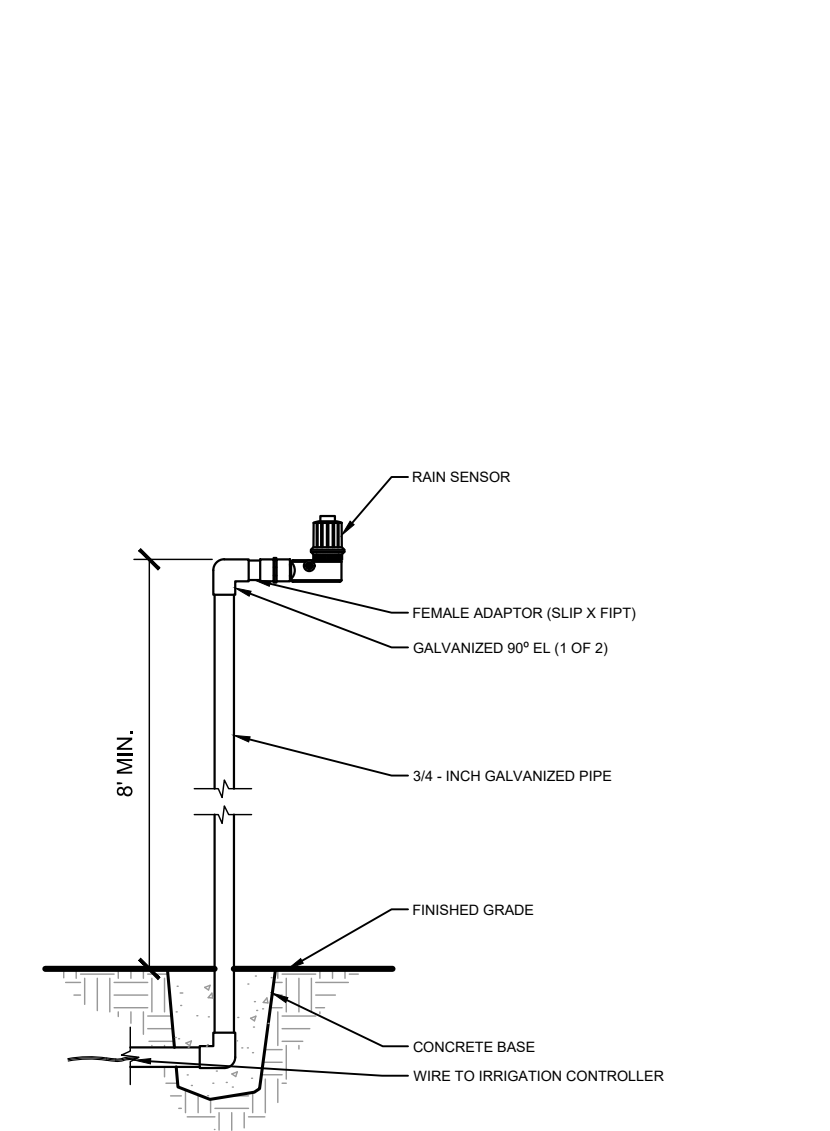
N:\denver\09560001 - mixed use parker\A\CAD\DWG\sheet\09560001R.dwg, 1/17/2017 10:57 AM
 THIS DOCUMENT IS UNCONTROLLED. IT IS THE USER'S RESPONSIBILITY TO VERIFY THE LATEST REVISIONS AND TO OBTAIN THE LATEST REVISIONS FROM THE PROJECT MANAGER. THE USER SHALL BE RESPONSIBLE FOR OBTAINING THE LATEST REVISIONS AND TO OBTAIN THE LATEST REVISIONS FROM THE PROJECT MANAGER. THE USER SHALL BE RESPONSIBLE FOR OBTAINING THE LATEST REVISIONS AND TO OBTAIN THE LATEST REVISIONS FROM THE PROJECT MANAGER.



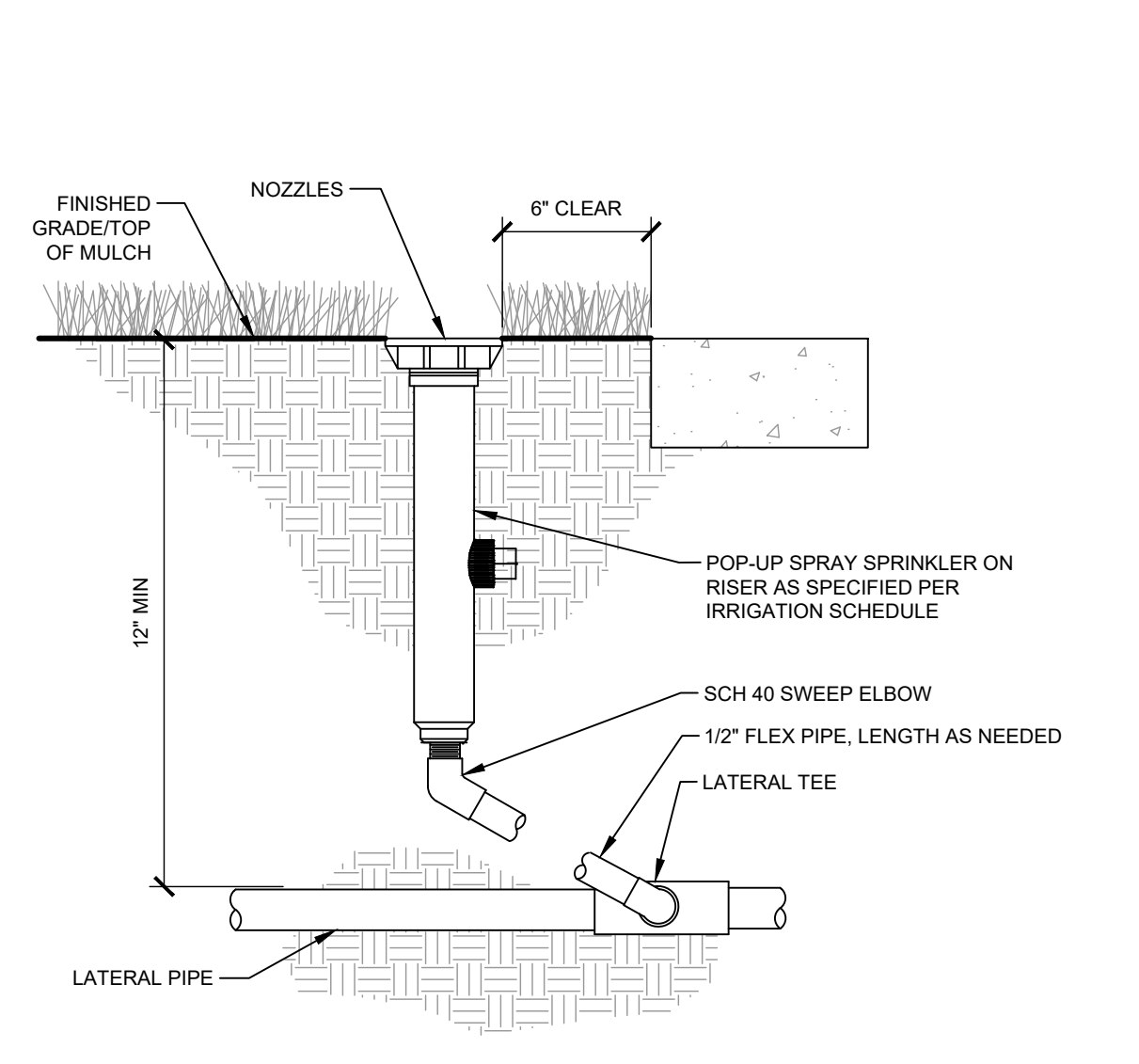
1 BACKFLOW PREVENTER
IR1.5 SECTION NTS



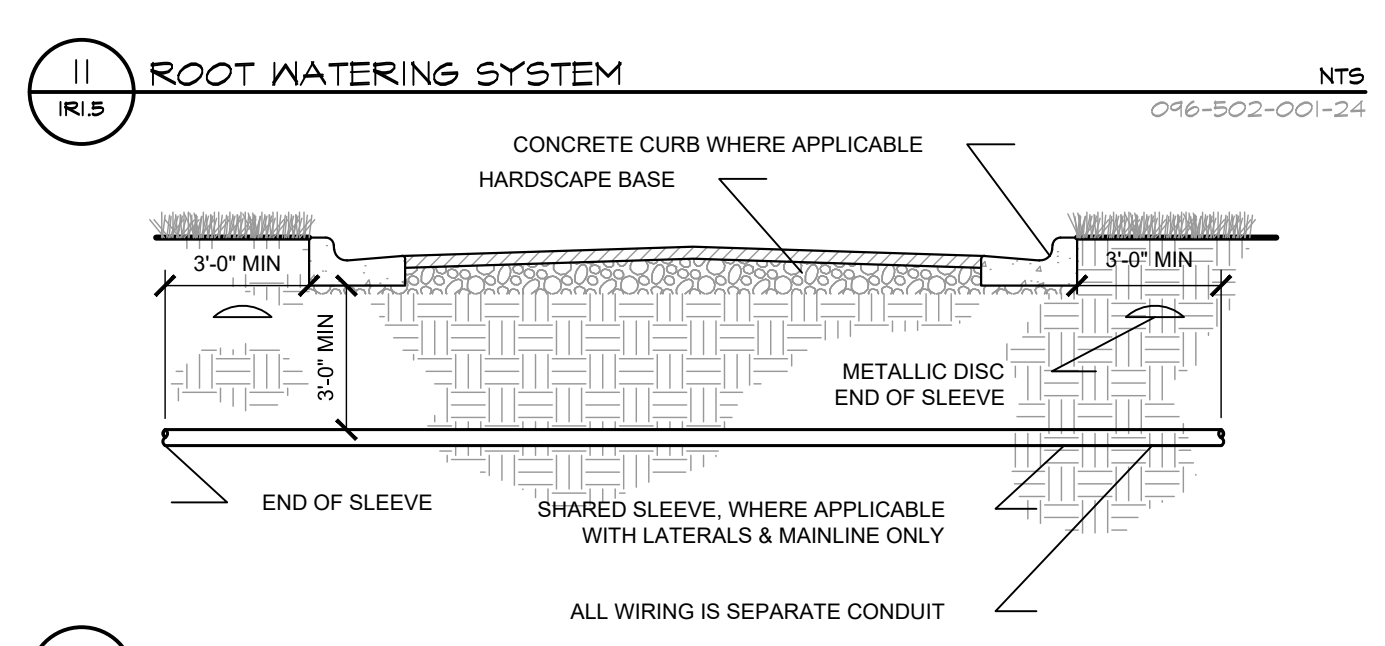
2 IRRIGATION CONTROLLER - PEDESTAL MOUNT
IR1.5 SECTION NTS



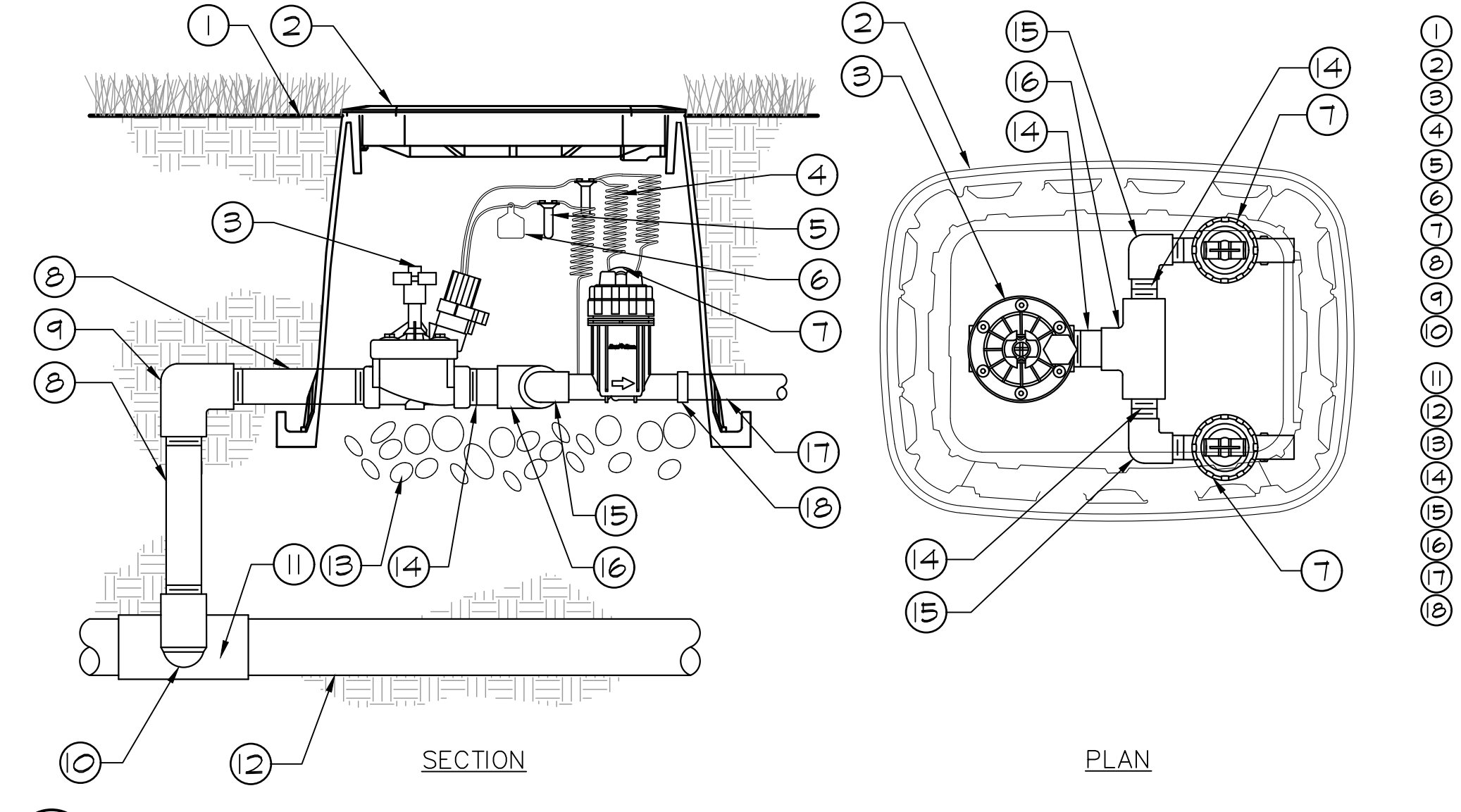
3 RAIN SENSOR - POLE MOUNT
IR1.5 SECTION NTS



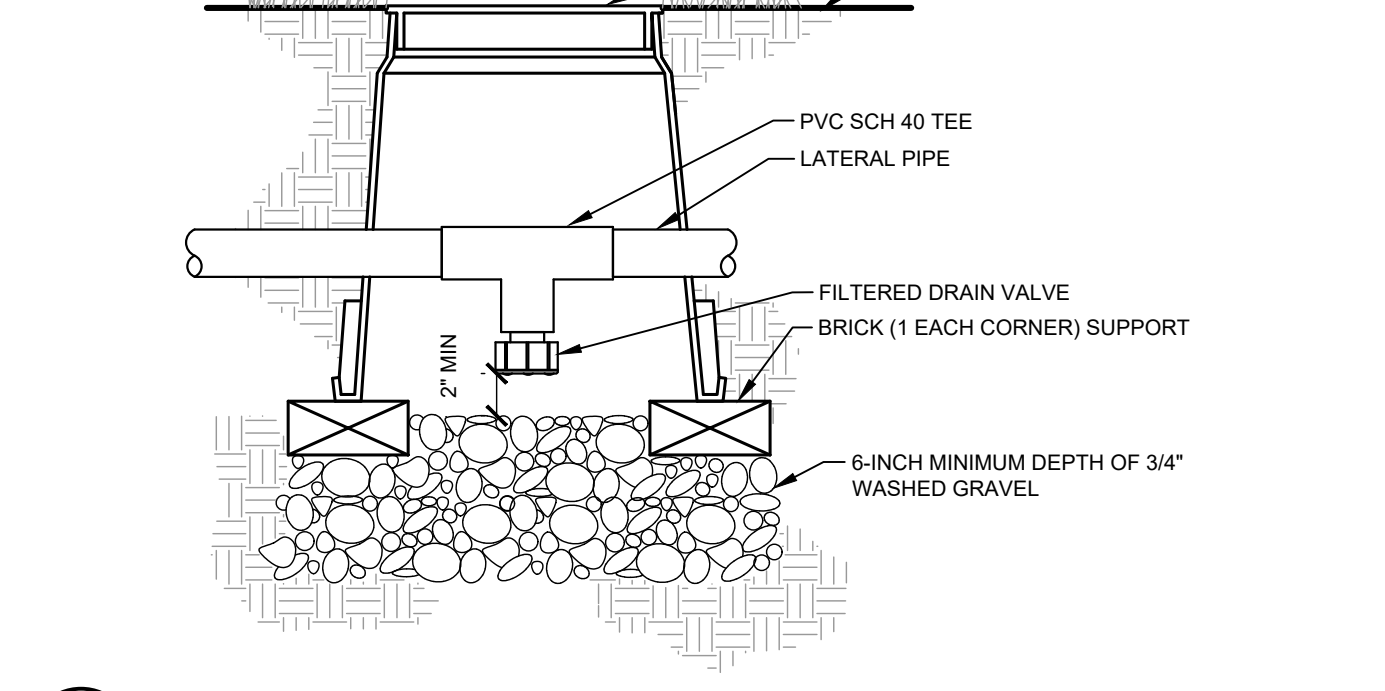
4 TYPICAL SPRAY / ROTAR HEAD
IR1.5 SECTION NTS



5 TYPICAL DRIPLINE
IR1.5 PLAN NTS



6 TYPICAL SLEEVING
IR1.5 SECTION NTS



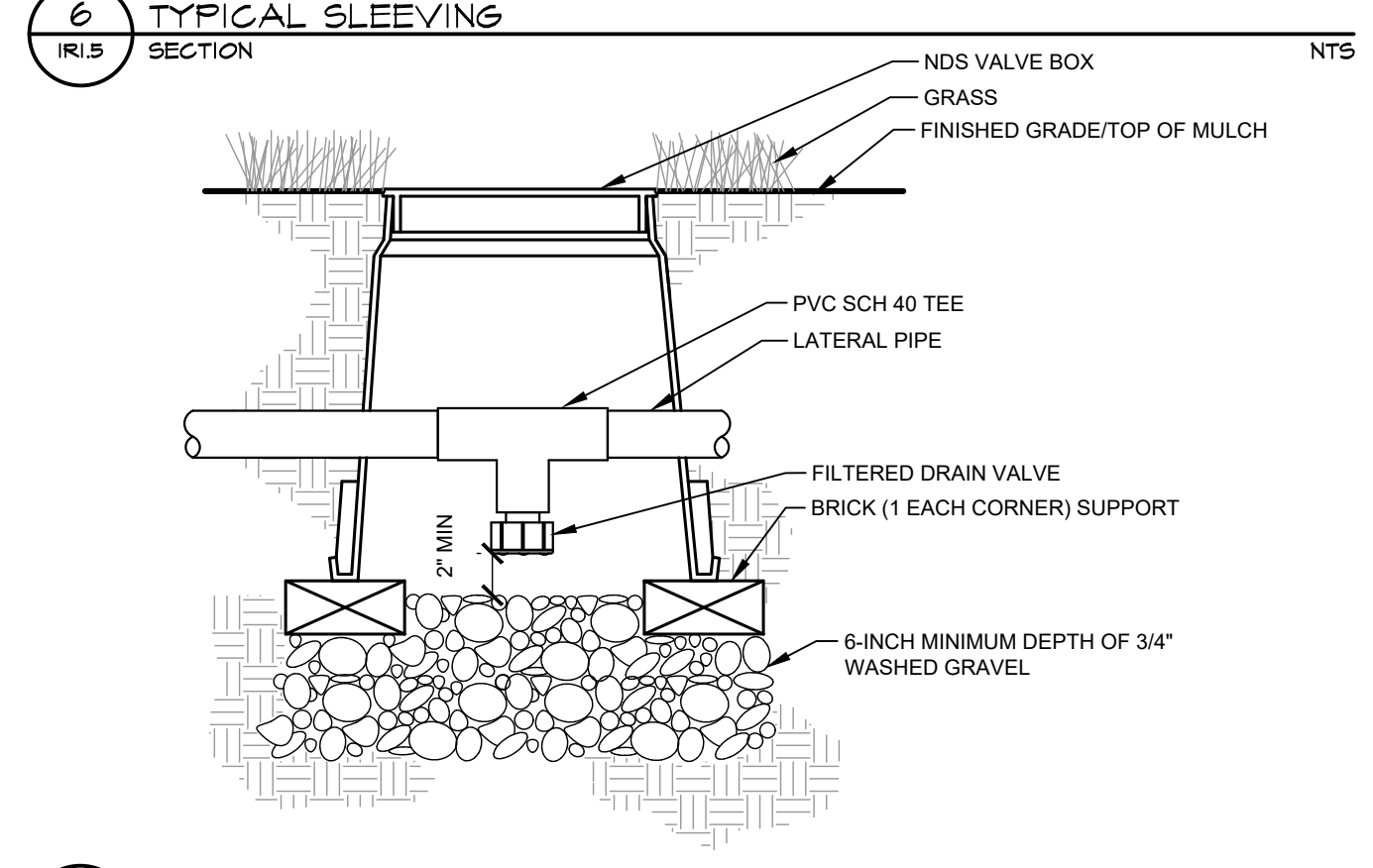
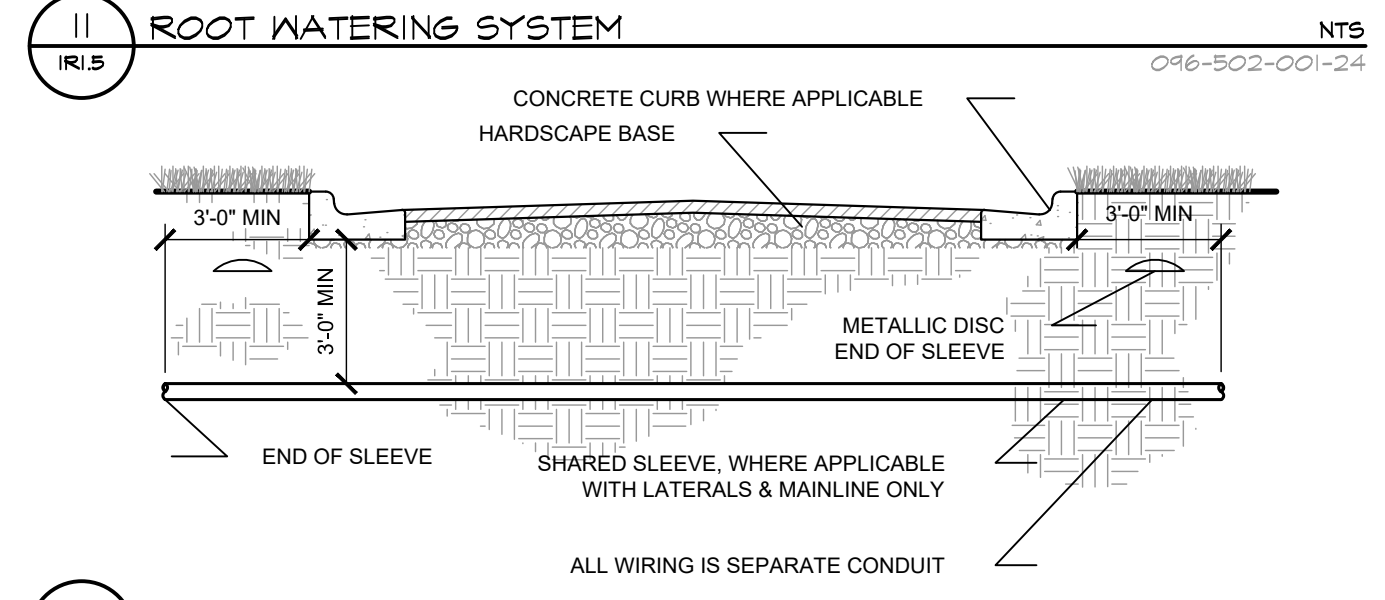
7 DRIP ZONE VALVE KIT
IR1.5 SECTION / PLAN NTS

8 TYPICAL DRAIN VALVE
IR1.5 SECTION NTS

9 MASTER CONTROL VALVE / FLOW SENSOR ASSEMBLY
IR1.5 SECTION NTS



11 ROOT WATERING SYSTEM
IR1.5 SECTION NTS



12 FINISHED GRADE/TOP OF MULCH
IR1.5 SECTION NTS

| NO. | REVISION | BY | DATE | APPR |
|-----|----------|----|------|------|
| | | | | |

Kimley»Horn
 2020 KIMLEY-HORN AND ASSOCIATES, INC.
 4582 South Ulster Street, Suite 1500
 Denver, Colorado 80237 (303) 228-2300

DESIGNED BY: DLS
 DRAWN BY: JRK
 CHECKED BY: DLS
 DATE: 04/24/20

PARKER AND PINE FILING 1
 PARKER, CO
 CONSTRUCTION DOCUMENTS
 IRRIGATION DETAILS

PRELIMINARY
 FOR REVIEW ONLY
 NOT FOR CONSTRUCTION
Kimley»Horn
 Kimley-Horn and Associates, Inc.

PROJECT NO.
 096502001

DRAWING NAME
 096502001R

IR1.6