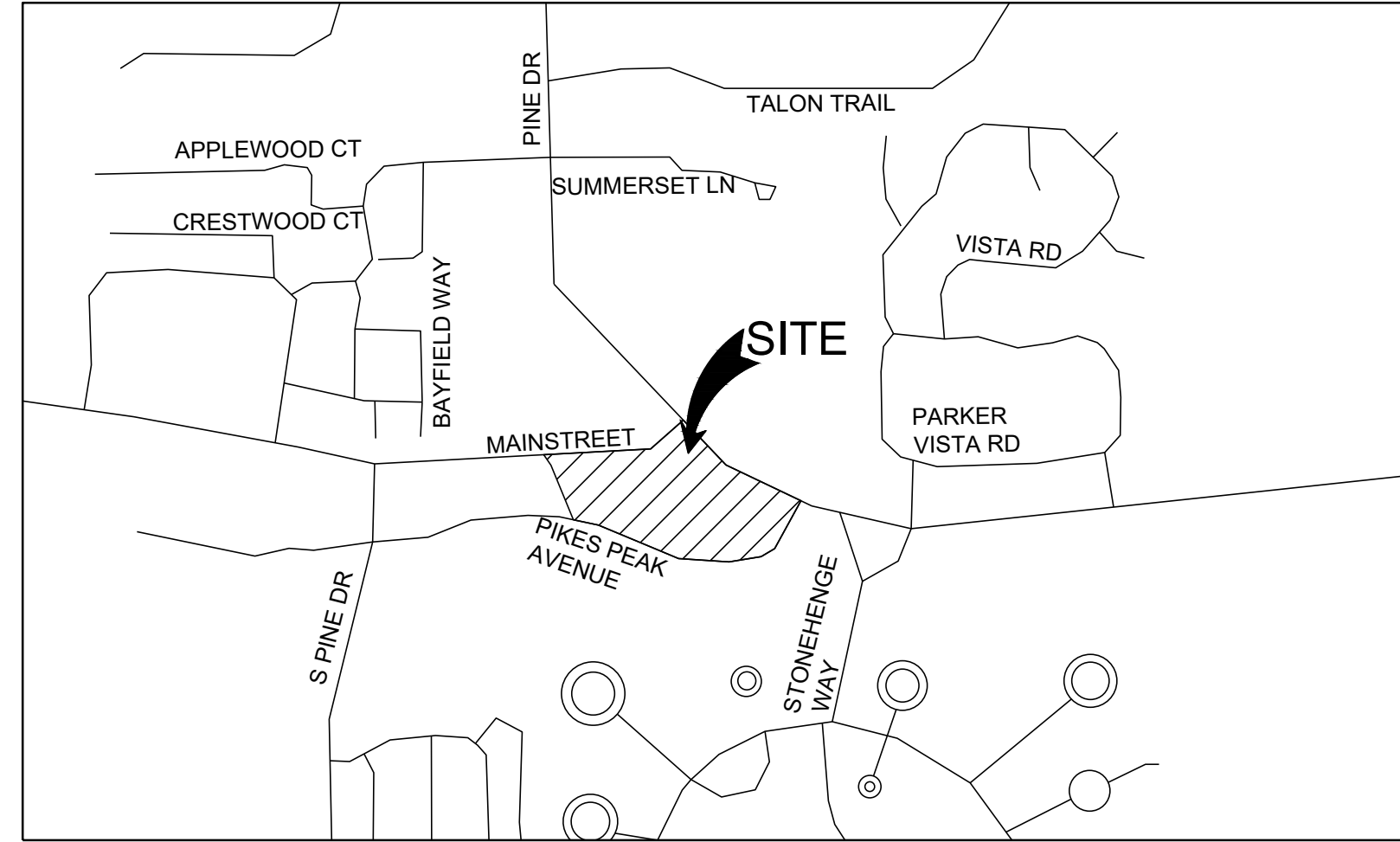


CONSTRUCTION PLANS
FOR
PARKER TOWN HALL

LOT 1, PARKER TOWN HALL, 3RD AMENDMENT, SUBDIVISION EXEMPTION PLAT, ACCORDING TO THE PLAT THEREOF RECORDED
FEBRUARY 5, 2015 AT RECEPTION NO. 2015007140, COUNTY OF DOUGLAS, STATE OF COLORADO



VICINITY MAP
NTS

Sheet List Table	
Sheet Number	Sheet Title
C-500	WATER AND SANITARY COVER SHEET
C-501	WATER AND SANITARY NOTES AND LEGEND
C-511	UTILITY PLAN
C-531	SANITARY PLAN AND PROFILE
C-551	WATER AND SANITARY DETAILS
C-552	WATER AND SANITARY DETAILS

ENGINEER'S STATEMENT

I HEREBY CERTIFY THAT THESE PLANS WERE PREPARED BY ME OR UNDER MY DIRECT SUPERVISION AND THAT I AM A REGISTERED PROFESSIONAL ENGINEER UNDER THE LAWS OF THE STATE OF COLORADO.



MEGAN HUERTER VOGT
REGISTERED PROFESSIONAL ENGINEER
COLORADO NO. 47666

MATERIALS LIST	
ITEM	QUANTITY
6" PVC	203 LF
2" TYPE K COPPER	121 LF
6" DIP	233 LF
2" DIP	129 LF
FIRE HYDRANT	3
8" CLEANOUT	3
8"X6" TEE	2
8" GATE VALVE	2
2" CURB STOP	1

FIRE FLOW BLOCK

TOTAL FIRE FLOW REQUIRED FOR THIS SITE IS 2,625 GPM MINIMUM @ 20 PSI RESIDUAL PRESSURE
THIS FLOW MUST BE PROVIDED FROM A MINIMUM OF 3 FIRE HYDRANTS INDIVIDUALLY. EACH FIRE HYDRANT MUST SUPPLY 1500 GPM MINIMUM @ 20 PSI RESIDUAL PRESSURE

CODE USED FOR ANALYSIS: 2018 IFC WITH APPENDICES B, C AND D

OCCUPANCY GROUPS: A3, B

CONSTRUCTION TYPE: III

FIRE FLOW CALCULATION AREA: 64,656 SF
TOTAL BUILDING AREA: 64,656 SF

BUILDING IS ANTICIPATED TO BE CONSTRUCTED WITH AN AUTOMATED FIRE SPRINKLER SYSTEM (NFPA 13) SO FIRE FLOW REQUIREMENT HAS BEEN REDUCED BY 50%.

THE DISTRICT INSPECTOR MUST BE NOTIFIED AT LEAST 48 HOURS PRIOR TO START OF CONSTRUCTION. CALL PARKER WATER AND SANITATION DISTRICT AT 303-841-4627. THE DISTRICT WILL PROVIDE PERIODIC INSPECTIONS OF THE 24 HOUR NOTICE TO THE INSPECTOR IS REQUIRED FOR SCHEDULING INSPECTIONS. ANY WORK ACCOMPLISHED WITHOUT THE APPROVAL OF THE INSPECTOR WILL BE SUBJECT TO REJECTION.

REVIEWED FOR CONFORMANCE TO PARKER WATER AND SANITATION DISTRICT STANDARDS.

BY: _____
(DISTRICT REPRESENTATIVE)

DATE: _____

APPROVED FOR CONSTRUCTION:
PARKER WATER AND SANITATION DISTRICT

BY: _____
(DISTRICT ENGINEER)

DATE: _____

CONTACTS:

OWNER'S REPRESENTATIVE
TOWN OF PARKER
20120 E. MAIN STREET
PARKER, CO 80138
P: (303) 840-9546

CIVIL ENGINEER
S.A. MIRO INC.
MEGAN H. VOGT
4582 SOUTH ULSTER STREET
SUITE 750 DENVER, CO 80237
303-741-3737

SURVEYOR
AZTEC CONSULTANTS, INC.
DANIEL E. DAVIS
300 EAST MINERAL AVE, SUITE 1
LITTLETON, CO 80122
P: (303)-713-1898

PUBLIC UTILITIES:

SOUTH METRO FIRE DISTRICT
9195 E. MINERAL AVENUE
CENTENNIAL, CO 80112
P: (720) 989-2244

PARKER WATER & SANITATION DISTRICT
18100 WOODMAN ROAD
PARKER, CO 80134
P: (303) 841-4627

TOWN OF PARKER
20120 E. MAIN STREET
PARKER, CO 80138
P: (303) 840-9546

BASIS OF BEARING:

BEARINGS SHOWN HEREON ARE GRID BEARINGS DERIVED FROM GPS OBSERVATIONS BASED UPON THE COLORADO COORDINATE SYSTEM OF 1983 CENTRAL ZONE (NAD 83, 2011), REFERENCED TO THE WEST LINE OF THE NORTHWEST QUARTER OF SECTION 23, TOWNSHIP 6 SOUTH, RANGE 66 WEST, SIXTH PRINCIPAL MERIDIAN, BEING MONUMENTED AT THE NORTHWEST CORNER OF SAID SECTION 23 BY A 3-1/4" DIAMETER ALUMINUM CAP STAMPED IN PART "AZTEC CONSULTANTS, INC. LS 17866 2003" AND AT THE WEST QUARTER CORNER OF SAID SECTION 23 BY A 2-3/4" ALUMINUM CAP STAMPED IN PART "LS 13155 1993", TAKEN TO BEAR NORTH 00°25'07" EAST, A DISTANCE OF 2,648.44 FEET.

BENCHMARK:

1-1/4" ALUMINUM ALLOY CAP SET ON NUMBER 5 REBAR STAMPED "AZTEC CP 51" LOCATED IN THE NORTH PARKING LOT OF CORNERSTONE PARK IN LITTELTON, IN THE GRASSY ISLAND 80.3 FEET EAST OF THE EAST EDGE THE GRAVEL TRAFFIC CIRCLE, AND 8 FEET NORTH OF THE EDGE OF GRAVEL

ELEVATION=5399.27 (NAVD 88).

ALL FIRE HYDRANTS SHALL BE INSTALLED ACCORDING TO WATER UTILITY STANDARDS. THE NUMBER AND LOCATIONS OF THE FIRE HYDRANTS AS SHOWN ON THE OVERALL UTILITY PLAN ARE CORRECT AS SPECIFIED BY THE TOWN OF PARKER, COMMUNITY DEVELOPMENT DEPARTMENT.

Fire Code Official or Designated Representative _____ Date _____

(NOTE - UNDERGROUND FIRE LINE (UFL) SUBMITTAL DOCUMENTS MUST MEET THE REQUIREMENTS OF NFPA 24 WHEN SUBMITTING FOR REVIEW.)



S.A. MIRO INC.
CONSULTING ENGINEERS

4582 South Ulster Street
Suite 750, Denver, CO 80237
303-741-3737
www.samiro.com



Know what's below.
Call before you dig.

NO.	DESCRIPTION	DATE
1	FIRST TOWN SUBMITTAL	11/03/2023
2	SECOND TOWN SUBMITTAL	02/05/2024
3	THIRD TOWN SUBMITTAL	04/04/2024

PROJECT: **PARKER TOWN HALL EXPANSION
20120 MAINSTREET
PARKER, CO 80138**

DRAWING TITLE: **WATER AND SANITARY COVER SHEET**

FILE PATH: C:\Users\jgh\Documents\S.A. Miro, Inc.\Civil\Jobs\22139 Parker Town Hall\05 CAD\Plans and Details\C500-WATR-COVR.dwg C500 - 4/10/2024



DESIGNED BY: RJH
DRAWN BY: DEI
CHECKED BY: MHV
MIRO JOB NO. 22139

DRAWING NUMBER:

C-500

MASTER LEGEND:

PROPOSED		EXISTING	
	PROPERTY LINE		CURB AND GUTTER
	SECTION LINE		SIDEWALK
	RIGHT OF WAY LINE		WALL
	CENTER LINE		FENCE
	CURB AND GUTTER		SIGN
	SIDEWALK		LIGHT
	WALL		TREE
	FENCE		MINOR CONTOURS
	SIGN		MAJOR CONTOURS
	LIGHT		SPOT ELEVATION
	TREE		CABLE TV LINE
	MINOR CONTOURS		COMMUNICATION LINE
	MAJOR CONTOURS		ELECTRICAL LINE
	RIDGE LINE		OVERHEAD ELECTRICAL LINE
	SPOT ELEVATION		FIBER OPTIC LINE
	CABLE TV LINE		GAS LINE
	COMMUNICATION LINE		TELEPHONE LINE
	ELECTRICAL LINE		IRRIGATION LINE
	OVERHEAD ELECTRICAL LINE		RAW WATER LINE
	FIBER OPTIC LINE		SANITARY SEWER LINE
	GAS LINE		STEAM LINE
	TELEPHONE LINE		STORM SEWER LINE
	IRRIGATION LINE		WATER LINE
	RAW WATER LINE		EASEMENT
	SANITARY SEWER LINE		INLET
	STEAM LINE		FLARED END SECTIONS
	WATER LINE		CLEANOUT
	EASEMENT		FIRE HYDRANT
	INLET		VALVE
	FLARED END SECTIONS		PEDESTAL
	CLEANOUT		UTILITY CROSSING
	FIRE HYDRANT		MANHOLES
	VALVE		LAMBS TONGUE ROOF DRAIN OVERFLOW
	PEDESTAL		
	UTILITY CROSSING		
	MANHOLES		
	LAMBS TONGUE ROOF DRAIN OVERFLOW		

ABBREVIATIONS:

BFV	BUTTERFLY VALVE	PCC	POINT OF COMPOUND CURVATURE
BOV	BLOW OFF VALVE	PCR	POINT OF CURB RETURN
BW	BOTTOM OF WALL @ FINISHED GRADE	PI	POINT ON INTERSECTION
CL	CENTERLINE	PRC	POINT OF REVERSE CURVATURE
CMP	CORRUGATED METAL PIPE	PT	POINT OF TANGENCY
EJ	EXPANSION JOINT	PVC	POLYVINYL CHLORIDE
ELEC.	ELECTRIC	RCP	REINFORCED CONCRETE PIPE
ELEV.	ELEVATION	RCB	REINFORCED CONCRETE BOX
EX	EXISTING	RL	RIDGE LINE
FES	FLARED END SECTION	ROW	RIGHT OF WAY
FG	FINISHED GRADE	RT	RIGHT
FS	FINISHED SURFACE	SD	STORM DRAINAGE SEWER
FL	FLOWLINE	SS	SANITARY SEWER
GB	GRADE BREAK	STA.	STATION
HP	HIGH POINT	STRM	STORM SEWER
FH	FIRE HYDRANT	TOF	TOP OF FLANGE
INV.	INVERT	TOP	TOP OF PIPE
IRR	IRRIGATION	TW	TOP OF WALL @ FINISHED GRADE
KB	KICK BLOCK	TYP.	TYPICAL
LF	LINEAR FEET	VCP	VITRIFIED CLAY PIPE
LP	LOW POINT	VPC	VERTICAL POINT OF CURVATURE
LT	LEFT	VPI	VERTICAL POINT OF INTERSECTION
ME	MATCH EXISTING	VPT	VERTICAL POINT OF TANGENCY
MH	MANHOLE	WATR	WATER LINE
PC	POINT OF CURVATURE		

PWSD GENERAL NOTES:

- ALL MATERIALS AND WORKMANSHIP SHALL BE IN CONFORMANCE WITH THE PWSD ENGINEERING STANDARDS AND SPECIFICATIONS, LATEST VERSION.
- THE CONTRACTOR SHALL CONTACT ALL APPROPRIATE UTILITY COMPANIES AND THE TOWN OF PARKER, DOUGLAS COUNTY AND OTHER NEIGHBORING CITIES AND TOWNS PRIOR TO THE BEGINNING OF ANY CONSTRUCTION. CONTRACTOR SHALL BE RESPONSIBLE FOR LOCATING ANY EXISTING UTILITY (INCLUDING DEPTHS) WHICH MAY CONFLICT WITH THE PROPOSED CONSTRUCTION. ALL EXISTING UTILITIES SHALL BE PROTECTED FROM DAMAGE BY THE CONTRACTOR. DAMAGED UTILITIES SHALL BE REPAIRED BY THE CONTRACTOR AT HIS OWN EXPENSE.
- ALL ITEMS SHOWN ON THE PLANS AS EXISTING ARE SHOWN IN APPROXIMATE LOCATIONS ONLY. THE ACTUAL LOCATIONS MAY VARY FROM THE PLANS, ESPECIALLY IN THE CASE OF UNDERGROUND UTILITIES. WHENEVER THE CONTRACTOR DISCOVERS A DISCREPANCY IN LOCATIONS CONTACT THE PWSD IMMEDIATELY.
- PWSD ENGINEER AND OTHER APPROVING AGENCIES ARE TO BE NOTIFIED 48 HOURS PRIOR TO CONSTRUCTION.
- THE CONTRACTOR SHALL OBTAIN, AT HIS EXPENSE, ALL PERMITS NECESSARY TO PERFORM THE PROPOSED WORK.
- ALL CONCRETE SHALL BE A MINIMUM OF CLASS A, 6 SACK, TYPE II, 3000-POUND COMPRESSION STRENGTH.
- THE DESIGN ENGINEER SHALL SUBMIT ONE (1) SET OF "AS-BUILT" DRAWINGS AND ELECTRONIC FILES TO THE DISTRICT ENGINEER FOR APPROVAL BY DISTRICT. AFTER APPROVAL HAS BEEN GRANTED BY THE DISTRICT ENGINEER, FULL SIZE PRINTS SHALL BE TRANSMITTED TO THE PWSD OFFICE.
- NO WORK SHALL BE BACKFILLED UNTIL THE CONSTRUCTION HAS BEEN INSPECTED AND APPROVED FOR BACKFILLING BY THE DISTRICT ENGINEER OR REPRESENTATIVE OF THE DISTRICT ENGINEER. ALL BACKFILL MATERIAL SHALL BE COMPACTED TO 95% STANDARD PROCTOR DENSITY. COMPACTION TESTS MUST BE SUBMITTED TO DISTRICT ENGINEER PRIOR TO PROBATIONARY ACCEPTANCE.
- TRENCHES SHALL BE EXCAVATED AND THE PIPE EXPOSED FOR THE INSPECTION AT ANY LOCATION ON THE PROJECT IF SO ORDERED BY THE INSPECTOR.
- THE CONTRACTOR WILL BE HELD RESPONSIBLE FOR THE PROPER FUNCTIONING OF LINES (WATER AND DEPTHS) FOR UP TO TWO (2) YEARS FROM THE DATE OF PROBATIONARY ACCEPTANCE OF THE LINES BY THE DISTRICT. ANY MALFUNCTION DURING THIS PERIOD OF GUARANTEE SHALL BE REMEDIATED BY THE CONTRACTOR TO THE SATISFACTION OF THE DISTRICT ENGINEER AT NO EXPENSE TO THE DISTRICT.
- SURFACE GRADES ARE TO BE WITHIN PLUS OR MINUS ONE FOOT OF FINISHED GRADE AND VERIFICATION OF COMPACTION RESULTS OBTAINED PRIOR TO THE INSTALLATION OF WATER AND SEWER LINES. RESULTS MUST BE SUBMITTED TO THE DISTRICT ENGINEER.
- ALL SERVICES WILL BE PERMANENTLY MARKED ON CURB FACE AS FOLLOWS:
"X" FOR SANITARY SERVICE SEWERS
"V" FOR WATER SERVICES
- NO TREES ALLOWED IN EASEMENTS OR WITHIN 8' OF WATER OR SANITARY SEWER MAINS IN RIGHT OF WAY.
- THE CONTRACTOR SHALL HAVE IN HIS POSSESSION AT ALL TIMES ONE (1) SIGNED COPY OF THE PLANS WHICH HAVE BEEN APPROVED BY THE PWSD AND THE DISTRICT ENGINEER AND ONE (1) COPY OF THE LATEST PWSD SPECIFICATION MANUAL.

PWSD WATER SYSTEM NOTES:

- ALL MATERIALS AND WORKMANSHIP SHALL BE IN CONFORMANCE WITH THE PWSD ENGINEERING STANDARDS AND SPECIFICATIONS, LATEST REVISION.
- ALL WATER MAINS SHALL BE PER PWSD MATERIALS SPECIFICATIONS. ALL MATERIALS IN CONTACT WITH POTABLE WATER SHALL BE SUITABLE FOR CHLORINATED AND CHLORAMINATED WATER.
- ALL BENDS, PLUGS, REDUCERS, AND FIRE HYDRANTS TO BE RODDED OR MEGA-LUGGED. ALL FITTINGS SHALL BE WRAPPED PER PWSD MATERIALS SPECIFICATIONS.
- THERE SHALL BE A MINIMUM COVER OF 4.5 FEET OVER ALL WATER MAINS.
- FIRE HYDRANTS SHALL CONFORM TO AWWA C-502 "DRY BARREL FIRE HYDRANTS" PIPE HYDRANT ASSEMBLIES PER PWSD SPECIFICATIONS.
- ALL BENDS, TEES, FIRE HYDRANTS, BLOW-OFFS, AND PLUGS AT DEAD-END MAINS SHALL BE PROTECTED FROM THRUST WITH CONCRETE THRUST BLOCKS.
- PRECAUTIONS SHALL BE TAKEN TO PROTECT THE INTERIOR OF PIPES, FITTINGS, AND VALVES AGAINST CONTAMINATION. ALL OPENINGS IN THE PIPELINE SHALL BE CLOSED WITH WATERTIGHT PLUGS WHEN PIPE LAYING IS STOPPED AT THE CLOSE OF THE DAY'S WORK OR FOR OTHER REASONS, SUCH AS REST BREAKS OR MEAL PERIODS.
- VALVES IN STREETS ARE TO BE LOCATED AT PROPERTY LINE EXTENSIONS EXCEPT FOR TAPPING TEES; WHERE AN ADDITIONAL VALVE SHALL BE PLACED ON THE TAPPING TEE. OTHER LOCATIONS SHOWN ON THE PLANS.
- WHEN NECESSARY TO LOWER OR RAISE WATER LINES AT STORM DRAINS AND OTHER UTILITY TRENCHES, A MINIMUM CLEARANCE OF 1.5 FEET SHALL BE MAINTAINED BETWEEN OUTSIDE OF PIPES.
- THE CONTRACTOR SHALL NOTIFY THE PWSD AT LEAST 48 HOURS PRIOR TO ANY CONSTRUCTION. IF WORK IS SUSPENDED FOR ANY PERIOD OF TIME AFTER INITIAL START-UP, THE CONTRACTOR MUST NOTIFY THE DISTRICT ENGINEER 48 HOURS PRIOR TO RE-START.
- PIPE BEDDING SHALL BE A CLEAN, WELL-GRADED SAND OR SQUEEGEE SAND IN ACCORDANCE WITH PWSD STANDARDS AND SPECIFICATIONS, LATEST REVISION.
- THE CONTRACTOR SHALL NOTIFY THE PUBLIC UTILITY COMPANIES AND DETERMINE THE LOCATION OF ALL EXISTING UNDERGROUND UTILITIES PRIOR TO PROCEEDING WITH THE EXCAVATION. ALL WORK PERFORMED IN THE AREA OF THE PUBLIC UTILITIES SHALL BE PERFORMED ACCORDING TO THE REQUIREMENTS OF THESE AGENCIES.
- COMPACTION OF ALL TRENCHES MUST BE ATTAINED IN ACCORDANCE WITH THE SOILS REPORTS AND COMPACTION TEST RESULTS SUBMITTED TO THE DISTRICT ENGINEER PRIOR TO PROBATIONARY ACCEPTANCE.
- AT LEAST FIVE (5) DAYS PRIOR TO THE START OF CONSTRUCTION, A PRE-CONSTRUCTION MEETING WILL BE HELD AT THE OFFICE OF THE DISTRICT ENGINEER AND ATTENDED BY THE CONTRACTOR, DESIGN ENGINEER, AND REPRESENTATIVE OF OTHER APPROVING AGENCIES.
- CHLORINATION AND FLUSHING: ALL WATER MAINS SHALL BE INSTALLED AND CHLORINATED PER PWSD SPECIFICATIONS. CHLORINATION OF FINISHED PIPELINE COMPLETED BEFORE HYDROSTATIC TESTING.
- HYDROSTATIC TESTING: ALL WATER MAINS SHALL BE TESTED PER THE REQUIREMENTS OF THE PWSD SPECIFICATIONS UP TO MINIMUM OF 150 PSI IN THE PRESENCE OF A PWSD INSPECTOR/ENGINEER.

PWSD SANITARY SEWER SYSTEM NOTES:

- ALL MATERIALS AND WORKMANSHIP SHALL BE IN CONFORMANCE WITH THE PWSD ENGINEERING STANDARDS AND SPECIFICATIONS, LATEST VERSION.
- ALL SEWER MAINS SHALL BE PVC, ASTM D-3034, SDR 35 OR APPROVED EQUAL. ALL SEWER MAIN SIZE IS 8" IN DIAMETER UNLESS OTHERWISE NOTED.
- SEWER LINES SHALL BE INSTALLED 5.0 FEET SOUTH OR WEST OF STREET CENTERLINE, UNLESS OTHERWISE SHOWN ON PLANS. SEWER LINES SHALL BE 10.00 FEET FROM WATER LINES EXCEPT WHEN CROSSING EACH OTHER. SEWER LINES WHICH CROSS LESS THAN 1.50 FEET VERTICALLY FROM THE WATER MAIN SHALL BE ENCASED IN CONCRETE AS PER PWSD SPECIFICATIONS. USE RUBBER GASKETS FOR PVC ENCASEMENT.
- SEWER RIM ELEVATIONS SHOWN ARE APPROPRIATE ONLY AND ARE NOT TO BE TAKEN AS FINAL ELEVATIONS. RING AND COVER SHALL BE SET IN CENTERED CONCRETE RINGS WITH RAM-NECK FOR ADJUSTMENT TO MATCH FINAL PAVEMENT ELEVATIONS.
- THE CONTRACTOR AND SURVEY CREW SHALL VERIFY ELEVATIONS OF EXISTING SEWER LINES AND MANHOLES TO BE TIED TO PRIOR TO CONSTRUCTION OR STAKING OF SANITARY SEWER.
- NO UNDERDRAIN SYSTEM WILL BE ALLOWED TO BE PLACED IN MAINLINE OR SEWER SERVICE TRENCHES.
- SEWER SERVICE TEES FOR EACH UNIT SHALL BE STAKED BY A SURVEY CREW AND FURNISHED AND INSTALLED BY THE CONTRACTOR. THE CONTRACTOR SHALL FURNISH TO THE ENGINEER "AS CONSTRUCTED" LOCATION OF TEES. SEWER WYES SHALL BE USED RATHER THAN TEES.
- ALL MANHOLES SHALL BE 48-INCHES IN DIAMETER WITH 24-INCH RING AND COVER, ECCENTRIC CONE UNLESS OTHERWISE SPECIFIED. ALL MANHOLES SHALL HAVE SHAPED INVERTS.
- PIPE BEDDING SHALL BE CLASS "B" AND SHALL CONFORM TO ASTM C-33 OR D-448 GRADATION NO. 6 OR NO. 67.
- AT LEAST FIVE (5) DAYS PRIOR TO THE START OF CONSTRUCTION, A PRE-CONSTRUCTION MEETING WILL BE HELD AT THE OFFICE OF THE DISTRICT ENGINEER AND ATTENDED BY THE CONTRACTOR AND REPRESENTATIVES OF THE OTHER APPROVING AGENCIES. IT WILL BE THE RESPONSIBILITY OF THE CONTRACTOR TO CONTACT THE DISTRICT ENGINEER TO SCHEDULE THIS MEETING.
- THE CONTRACTOR SHALL HAVE IN HIS POSSESSION AT ALL TIMES ONE (1) SIGNED COPY OF THE PLANS WHICH HAVE BEEN APPROVED BY THE PWSD AND THE DISTRICT ENGINEER AND ONE (1) COPY OF THE LATEST PWSD SPECIFICATION MANUAL.
- ALL SEWER LINES SHALL BE TESTED IN ACCORDANCE WITH THE PWSD STANDARDS AND SPECIFICATIONS PRIOR TO ACCEPTANCE OR ANY CONNECTION TO AN EXISTING SEWER LINE.
- PRIOR TO STARTING WORK WHERE SEWER MAIN IS TO BE CONNECTED TO EXISTING PWSD SEWER SYSTEMS. THE NEAREST MANHOLE TO THE POINT OF TIE-IN SHALL BE PLUGGED WITH A PLUMBER'S PLUG ON THE INLET SIDE BY THE CONTRACTOR. THIS PLUG SHALL REMAIN IN PLACE UNTIL FINAL PROBATIONARY ACCEPTANCE BY PWSD. THE CONTRACTOR SHALL BE RESPONSIBLE FOR PUMPING AND CLEANING THESE MANHOLES AND REMOVING THE PLUG WHEN INSTRUCTED BY THE DISTRICT.
- PRIOR TO PROBATIONARY ACCEPTANCE WALK-THROUGH, THE CONTRACTOR SHALL JET CLEAN THE ENTIRE SANITARY SEWER SYSTEM AND PUMP OUT AT THE PLUGGED MANHOLE.

GENERAL NOTES:

- THE CONTRACTOR SHALL BE SOLELY AND COMPLETELY RESPONSIBLE FOR CONDITIONS AT AND ADJACENT TO THE JOB SITE, INCLUDING SAFETY OF ALL PERSONS AND PROPERTY DURING PERFORMANCE OF THE WORK. THIS REQUIREMENT SHALL APPLY CONTINUOUSLY AND NOT BE LIMITED TO NORMAL WORKING HOURS.
- THE CONTRACTOR SHALL PERFORM ALL WORK NECESSARY TO COMPLETE THE WORK SHOWN ON THE PLANS OR DESCRIBED IN THE SPECIFICATIONS IN A SATISFACTORY MANNER. THE CONTRACTOR SHALL FURNISH ALL MATERIALS, EQUIPMENT, TOOLS, LABOR, AND INCIDENTALS TO COMPLETE THE WORK.
- THE CONTRACTOR SHALL OBTAIN ALL NECESSARY PERMITS AT THEIR EXPENSE TO COMPLETE ALL GRADING, UTILITY WORK AND INSTALLATION OF EROSION CONTROL MEASURES.
- THE CONTRACTOR SHALL COORDINATE WORK WITH ALL ADJACENT PROJECTS.
- DURING CONSTRUCTION IT SHALL BE THE RESPONSIBILITY OF THE CONTRACTOR TO PROTECT EXISTING UTILITY LINES SHOWN ON THESE PLANS AND THOSE UTILITY LINES WHICH MAY NOT BE SHOWN ON THESE PLANS.
- EXISTING SITE INFORMATION SHOWN ON THESE DRAWINGS IS BASED UPON AVAILABLE SURVEY BY AZTEC CONSULTANTS, INC DATED 08/11/2022. S.A. MIRO, INC. MAKES NO WARRANTIES OR CERTIFICATION OF THE COMPLETENESS OR ACCURACY OF THE EXISTING CONDITIONS PRESENTED. THE CONTRACTOR SHALL INSPECT THE SITE TO ASSESS EXISTING CONDITIONS, AND SATISFY THEMSELVES THAT THE DOCUMENTS ACCURATELY REPRESENT THE SITE CONDITIONS PRIOR TO CONSTRUCTION. ANY DISCREPANCIES FOUND DURING INITIAL INSPECTIONS, OR SUBSEQUENTLY, SHALL BE REPORTED TO THE ENGINEER IMMEDIATELY FOR RESOLUTION RELATIVE TO THE INTENDED CONSTRUCTION.
- THE EXISTING UTILITIES SHOWN ON THESE PLANS HAVE BEEN LOCATED USING FIELD SURVEY DATA LOCATING MANHOLES, WATER VALVES, ELECTRICAL EQUIPMENT, AND OTHER FEATURES FOUND AT THE SURFACE. NO SUBSURFACE EXPLORATION HAS BEEN DONE TO VERIFY EXACT LOCATION OF EXISTING UTILITIES. THE CONTRACTOR SHALL POTHOLE EXISTING UTILITIES PRIOR TO CONSTRUCTION AND NOTIFY THE ENGINEER OF ANY POTENTIAL CONFLICT PRIOR TO CONSTRUCTION.
- THE CONTRACTOR SHALL BEAR THE FULL COST OF REMOVAL, REPLACEMENT AND DELAY RELATED TO UNVERIFIED EXISTING CONDITIONS. WHERE THE CONTRACTOR FINDS CONFLICTS OR DISCREPANCIES, THEY SHALL BE REPORTED IMMEDIATELY TO THE ENGINEER.
- THE CONTRACTOR SHALL NOTIFY APPROPRIATE ENTITIES FOR UTILITY LOCATES AND START OF CONSTRUCTION PRIOR TO ANY WORK BEING STARTED.
- THE CONTRACTOR SHALL NOTIFY AND COORDINATE WITH ALL AFFECTED PARTIES PRIOR TO ANY OUTAGES OR SHUTDOWN OF SERVICE.
- ALL QUANTITIES SHOWN ON THESE PLANS ARE SHOWN FOR BIDDING PURPOSES ONLY. CONTRACTOR SHALL FIELD VERIFY ALL QUANTITIES PRIOR TO CONSTRUCTION AND ORDERING OF ANY MATERIALS.
- THE CONTRACTOR SHALL COMPLY WITH ALL LOCAL, STATE, AND FEDERAL REGULATIONS.
- THE CONTRACTOR SHALL FOLLOW/VERIFY THE INTENT OF THE DESIGN AT ALL LOCATIONS OF TIE-IN TO EXISTING FEATURES.

DEMOLITION NOTES:

- UNLESS OTHERWISE NOTED, EXISTING UTILITIES AND STRUCTURES SHALL REMAIN AND BE PROTECTED IN PLACE.
- THE CONTRACTOR SHALL PROTECT ALL ADJACENT IMPROVEMENTS (BUILDINGS, ROADWAYS, FENCES, PARKING LOTS, UTILITIES, ETC.) FROM DAMAGE AND EROSION. ALL DISTURBED AREAS OUTSIDE OF THE LIMITS OF WORK SHALL BE RESTORED TO THEIR ORIGINAL CONDITION.

HORIZONTAL CONTROL NOTES:

- BEARINGS SHOWN HEREON ARE GRID BEARINGS DERIVED FROM GPS OBSERVATIONS BASED UPON THE COLORADO COORDINATE SYSTEM OF 1983 CENTRAL ZONE (NAD 83, 2011), REFERENCED TO THE WEST LINE OF THE NORTHWEST QUARTER OF SECTION 23, TOWNSHIP 6 SOUTH, RANGE 66 WEST, SIXTH PRINCIPAL MERIDIAN, BEING MONUMENTED AT THE NORTHWEST CORNER OF SAID SECTION 23 BY A 3-1/4" DIAMETER ALUMINUM CAP STAMPED IN PART "AZTEC CONSULTANTS, INC. LS 17666 2003" AND AT THE WEST QUARTER CORNER OF SAID SECTION 23 BY A 2-3/4" ALUMINUM CAP STAMPED IN PART "LS 13155 1993", TAKEN TO BEAR NORTH 00°25'07" EAST, A DISTANCE OF 2,648.44 FEET.
- THE CONTRACTOR SHALL VERIFY THAT BUILDING GRID LOCATIONS ARE CONSISTENT WITH LATEST ARCHITECTURAL PLANS PRIOR TO CONSTRUCTION.

PAVING NOTES:

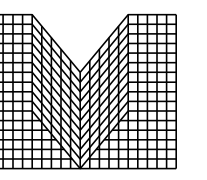
- THE CONTRACTOR SHALL ADJUST EXISTING AND PROPOSED MANHOLES, WATER VALVES AND OTHER SURFACE APPURTENANCES WITHIN THE LIMITS OF WORK TO FINISHED GRADE.
- THE CONTRACTOR SHALL REFER TO ARCHITECTURAL/LANDSCAPE PLANS FOR CONCRETE SCORING PATTERNS, COLOR AND FINISHING.
- PROPOSED PAVEMENT DESIGN IS BASED UPON THE GEOTECHNICAL REPORT BY KUMAR & ASSOCIATES DATED 01/17/2023. S.A. MIRO, INC. MAKES NO WARRANTIES OR CERTIFICATION OF PAVEMENT PERFORMANCE.

UTILITY NOTES:

- LOCATION OF ALL EXISTING UTILITIES (PRIVATE AND PUBLIC) SHALL BE IDENTIFIED AND VERIFIED BY THE CONTRACTOR PRIOR TO MOBILIZATION, CONSTRUCTION AND ORDERING OF MATERIALS. IF ANY CONFLICTS OR DISCREPANCIES ARE FOUND THE CONTRACTOR SHALL NOTIFY THE ENGINEER IMMEDIATELY. THE CONTRACTOR SHALL BEAR THE FULL COST OF REMOVAL, REPLACEMENT, REPAIR AND DELAYS RELATED TO ANY AND ALL UNVERIFIED EXISTING CONDITIONS.
- ALL UTILITY LENGTHS AND QUANTITIES SHOWN ON THESE PLANS ARE FOR BIDDING PURPOSES ONLY. CONTRACTOR SHALL FIELD VERIFY ALL LENGTHS AND QUANTITIES PRIOR TO ORDERING OF ANY MATERIALS.
- PIPE LENGTHS ARE MEASURED FROM CENTER OF STRUCTURE TO CENTER OF STRUCTURE.
- WHERE FLARED END SECTIONS ARE REQUIRED, THE LENGTH OF PIPE INCLUDES THE FLARED END SECTION.
- ALL UTILITY WORK SHALL BE COMPLETED PRIOR TO ANY PAVING.
- CONTRACTOR SHALL SURVEY THE LOCATION AND ELEVATION OF ALL INSTALLED UTILITIES PRIOR TO TRENCH BACKFILL, AND PROVIDE SURVEY INFORMATION TO THE ENGINEER UPON COMPLETION OF THE PROJECT FOR AS-BUILT DOCUMENTATION.

GRADING NOTES:

- SITE GRADING (EXCAVATION, EMBANKMENTS, AND COMPACTION) SHALL CONFORM TO THE RECOMMENDATIONS OF THE LATEST GEOTECHNICAL REPORT FOR THIS PROPERTY.
- SPOT ELEVATIONS MAY BE ABBREVIATED FOR CLARITY. REFER TO THE ADJACENT CONTOUR LABELS FOR FULL ELEVATIONS.
- MAXIMUM PROPOSED SLOPES SHALL BE 4:1 UNLESS NOTED OTHERWISE.
- SPOT ELEVATIONS ARE TO FLOWLINE UNLESS NOTED OTHERWISE.
- PROPOSED GRADING SHALL MEET AND MATCH EXISTING GRADE AT LIMITS OF DISTURBANCE.
- PROPOSED GRADING AS SHOWN REFLECTS PLANNED FINISHED GRADE. THE CONTRACTOR SHALL ACCOUNT FOR PAVEMENT DEPTH, SUBGRADE REQUIREMENTS, OVEREXCAVATION, TOPSOIL, AND ANY PLANNED SURFACING CONSTRUCTION.
- MAXIMUM TEMPORARY SLOPES SHALL BE CONSTRUCTED IN ACCORDANCE WITH THE GEOTECHNICAL ENGINEER'S RECOMMENDATIONS AND IN COMPLIANCE WITH OSHA REQUIREMENTS.
- THE CONTRACTOR SHALL CONFORM TO OVEREXCAVATION REQUIREMENTS DETAILED WITHIN THE PROJECT SPECIFICATIONS AND GEOTECHNICAL REPORT. OVEREXCAVATION REQUIREMENTS ARE NOT DEPICTED ON THE CIVIL PLANS.



S.A. MIRO INC.
CONSULTING ENGINEERS

4582 South Ulster Street
Suite 750, Denver, CO 80237
303-741-3737
www.samiro.com



Know what's below.
Call before you dig.

DATE	DESCRIPTION
11/03/2023	FIRST TOWN SUBMITTAL
02/05/2024	SECOND TOWN SUBMITTAL
04/04/2024	THIRD TOWN SUBMITTAL

NO.	DESCRIPTION
1	
2	
3	

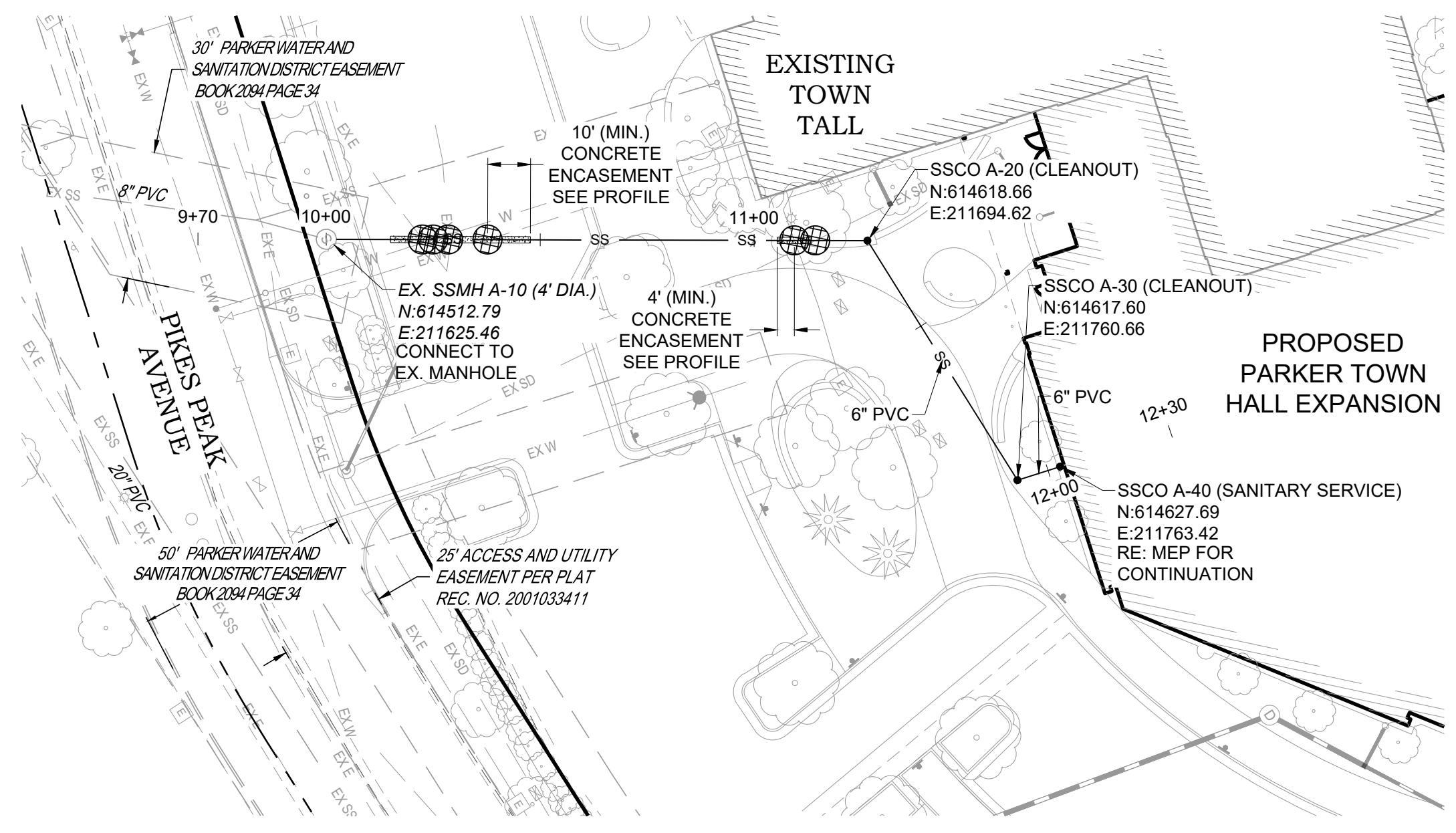
PARKER TOWN HALL EXPANSION
20120 MAINSTREET
PARKER, CO 80138
WATER AND SANITARY NOTES AND LEGEND



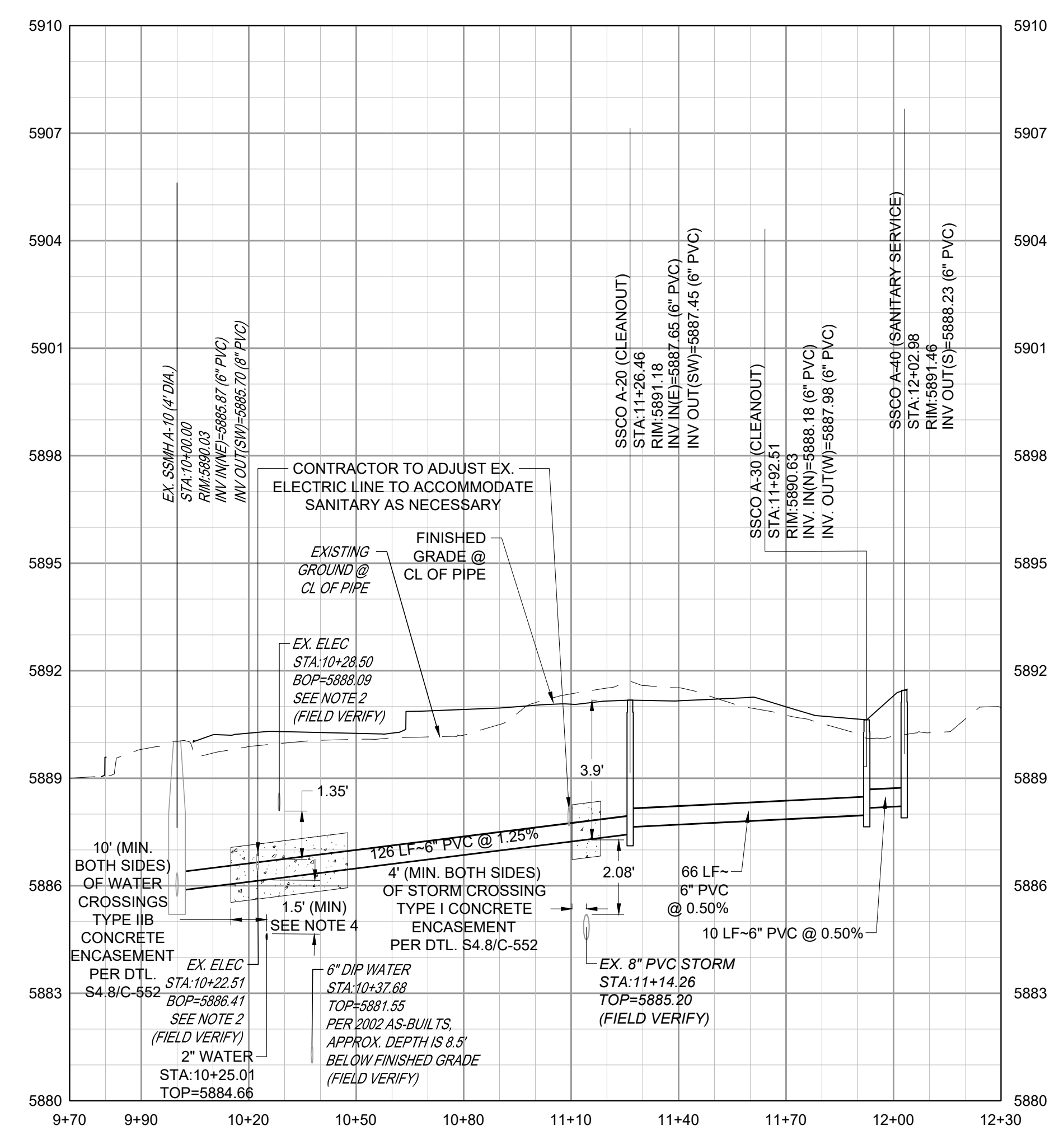
DESIGNED BY: RJH
DRAWN BY: DEI
CHECKED BY: MHV
MIRO JOB NO. 22139

DRAWING NUMBER:

C-501

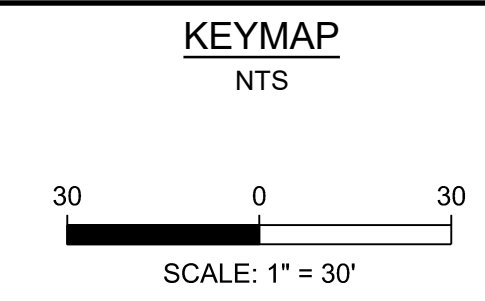
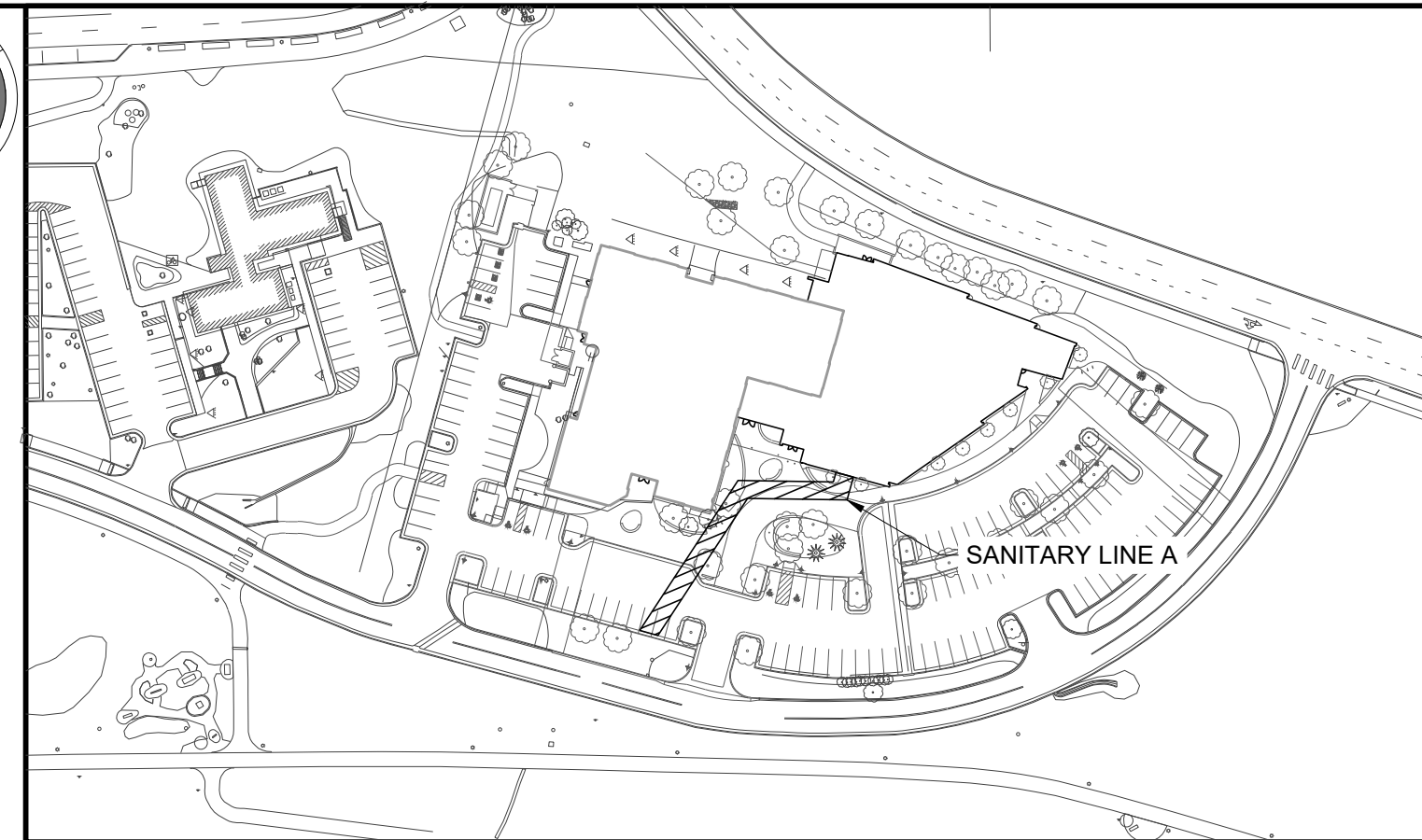
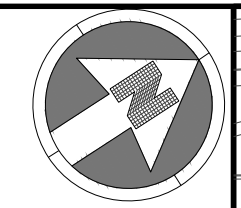


SANITARY LINE A PLAN



SANITARY LINE A PROFILE

VERTICAL SCALE: 1"=3'
HORIZONTAL SCALE: 1"=30'



- NOTES:**
- SEE SHEET C-501 FOR CIVIL NOTES AND LEGEND.
 - ALL EXISTING DRY UTILITIES ARE ASSUMED TO BE 3' DEEP TO TOP OF PIPE.
 - ALL EXISTING WATER LINES ARE ASSUMED TO BE 4.5' DEEP TO TOP OF PIPE, UNLESS OTHERWISE NOTED.
 - CONTRACTOR TO ADJUST WATER LINE AS NECESSARY TO MAINTAIN A MINIMUM OF 4.5' OF COVER BELOW FINISH GRADE AND 18" BETWEEN OTHER UTILITIES.
 - THE CONTRACTOR SHALL POTHOLE ALL EXISTING UTILITY CROSSINGS PRIOR TO CONSTRUCTION AND NOTIFY THE ENGINEER OF ANY POTENTIAL CONFLICTS IMMEDIATELY.

- LEGEND:**
- UTILITY CROSSING

S.A. MIRO INC.
CONSULTING ENGINEERS

4582 South Ulster Street
Suite 750, Denver, CO 80237
303-741-3737
www.samiro.com

Know what's below.
Call before you dig.

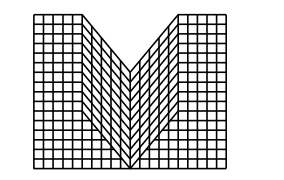
NO.	DESCRIPTION	DATE
1	FIRST TOWN SUBMITTAL	11/03/2023
2	SECOND TOWN SUBMITTAL	02/05/2024
3	THIRD TOWN SUBMITTAL	04/04/2024

PROJECT: PARKER TOWN HALL EXPANSION
20120 MAIN STREET
PARKER, CO 80138

DRAWING TITLE: SANITARY PLAN AND PROFILE

FILE PATH: C:\Users\ghDCA\OneDrive\A. Miros\Projects\2023\139 Parker Town Hall\05 CAD\Plans and Details\C31-SSEW-PROF.dwg C531 - 4/10/2024

DESIGNED BY: RJH
DRAWN BY: DEI
CHECKED BY: MHV
MIRO JOB NO. 22139
DRAWING NUMBER:
C-531



S.A. MIRO INC. CONSULTING ENGINEERS

4582 South Ulster Street Suite 750, Denver, CO 80237 303-741-3737 www.samiro.com



Know what's below. Call before you dig.

DATE: 11/03/2023

DESCRIPTION: FIRST TOWN SUBMITTAL

SECOND TOWN SUBMITTAL

THIRD TOWN SUBMITTAL

DATE: 02/05/2024

DATE: 04/04/2024

NO. 1

NO. 2

NO. 3

PROJECT: PARKER TOWN HALL EXPANSION

20120 MAIN STREET

PARKER, CO 80138

WATER AND SANITARY DETAILS

DRAWING TITLE: WATER AND SANITARY DETAILS

PROJECT: PARKER TOWN HALL EXPANSION

20120 MAIN STREET

PARKER, CO 80138

WATER AND SANITARY DETAILS

DRAWING TITLE: WATER AND SANITARY DETAILS

PROJECT: PARKER TOWN HALL EXPANSION

20120 MAIN STREET

PARKER, CO 80138

WATER AND SANITARY DETAILS

DRAWING TITLE: WATER AND SANITARY DETAILS

PROJECT: PARKER TOWN HALL EXPANSION

20120 MAIN STREET

PARKER, CO 80138

WATER AND SANITARY DETAILS

DRAWING TITLE: WATER AND SANITARY DETAILS

PROJECT: PARKER TOWN HALL EXPANSION

20120 MAIN STREET

PARKER, CO 80138

WATER AND SANITARY DETAILS

DRAWING TITLE: WATER AND SANITARY DETAILS

DESIGNED BY: RJH

DRAWN BY: DEI

CHECKED BY: MHV

MIRO JOB NO. 22139

DRAWING NUMBER: C-551

FILE PATH: C:\Users\jgh\OneDrive\A. Miros\Civil\Jobs\22139 Parker Town Hall\05 CAD\Plans and Details\C551-WATR-DTLS.dwg C551 - 4/10/2024

PROFESSIONAL ENGINEER

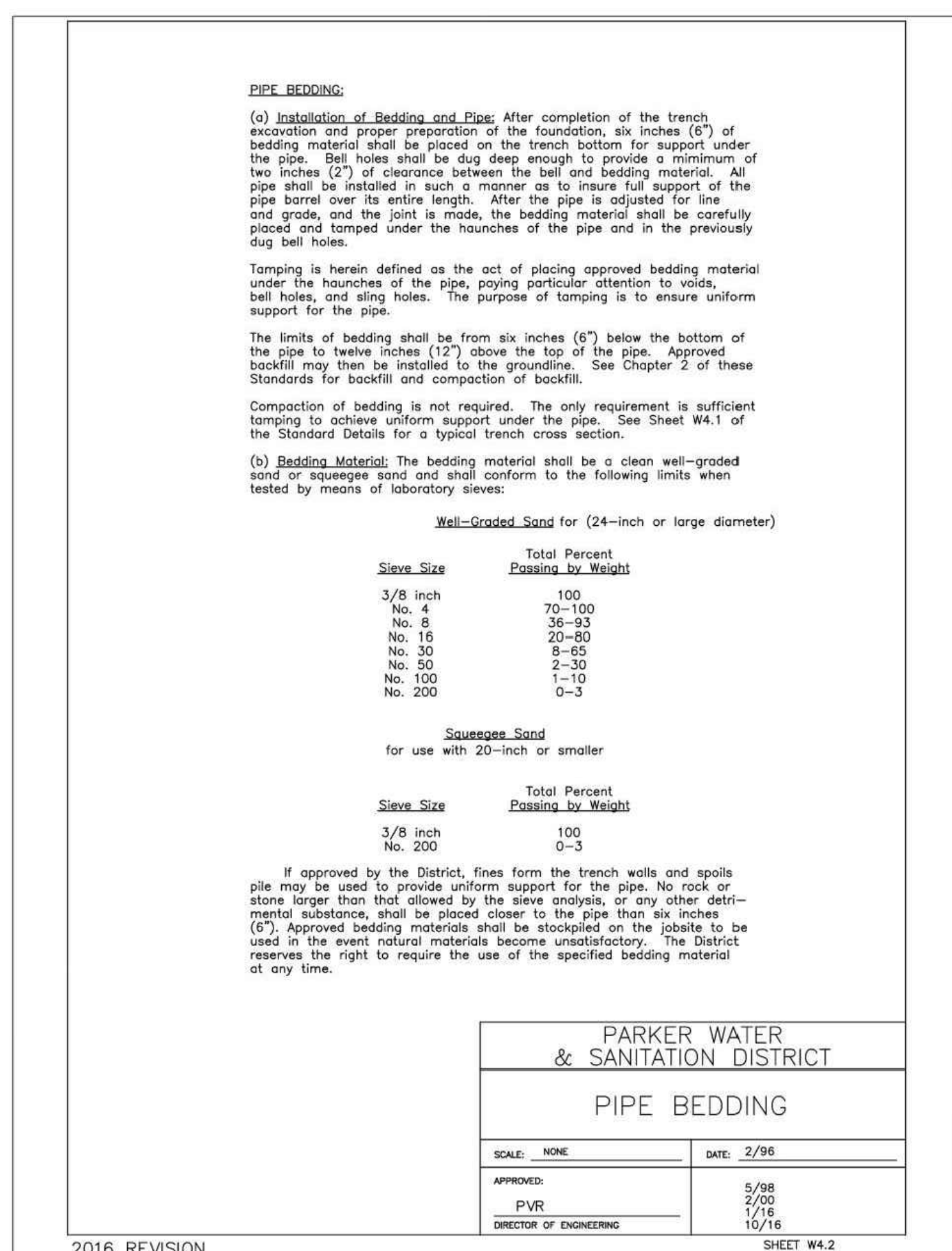
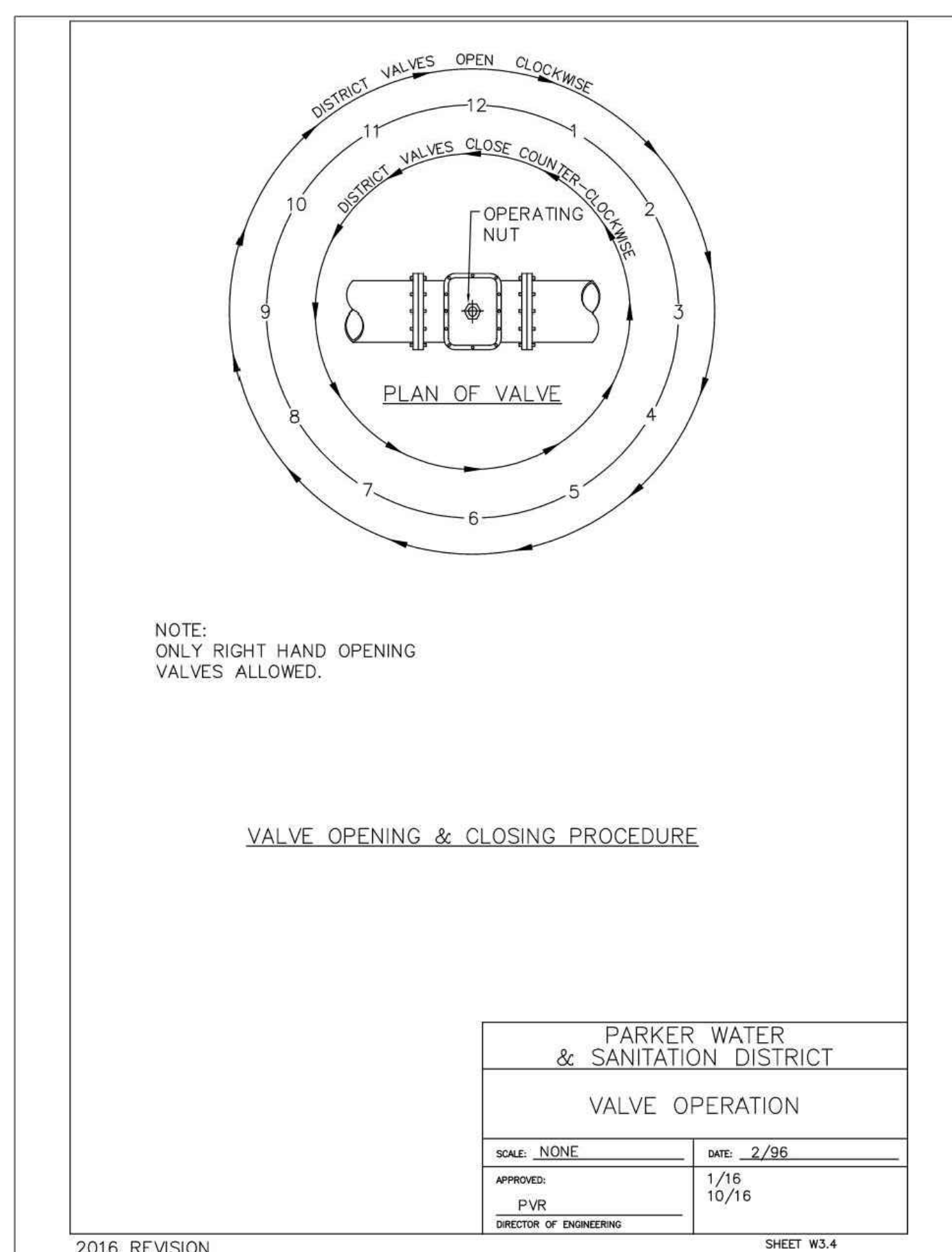
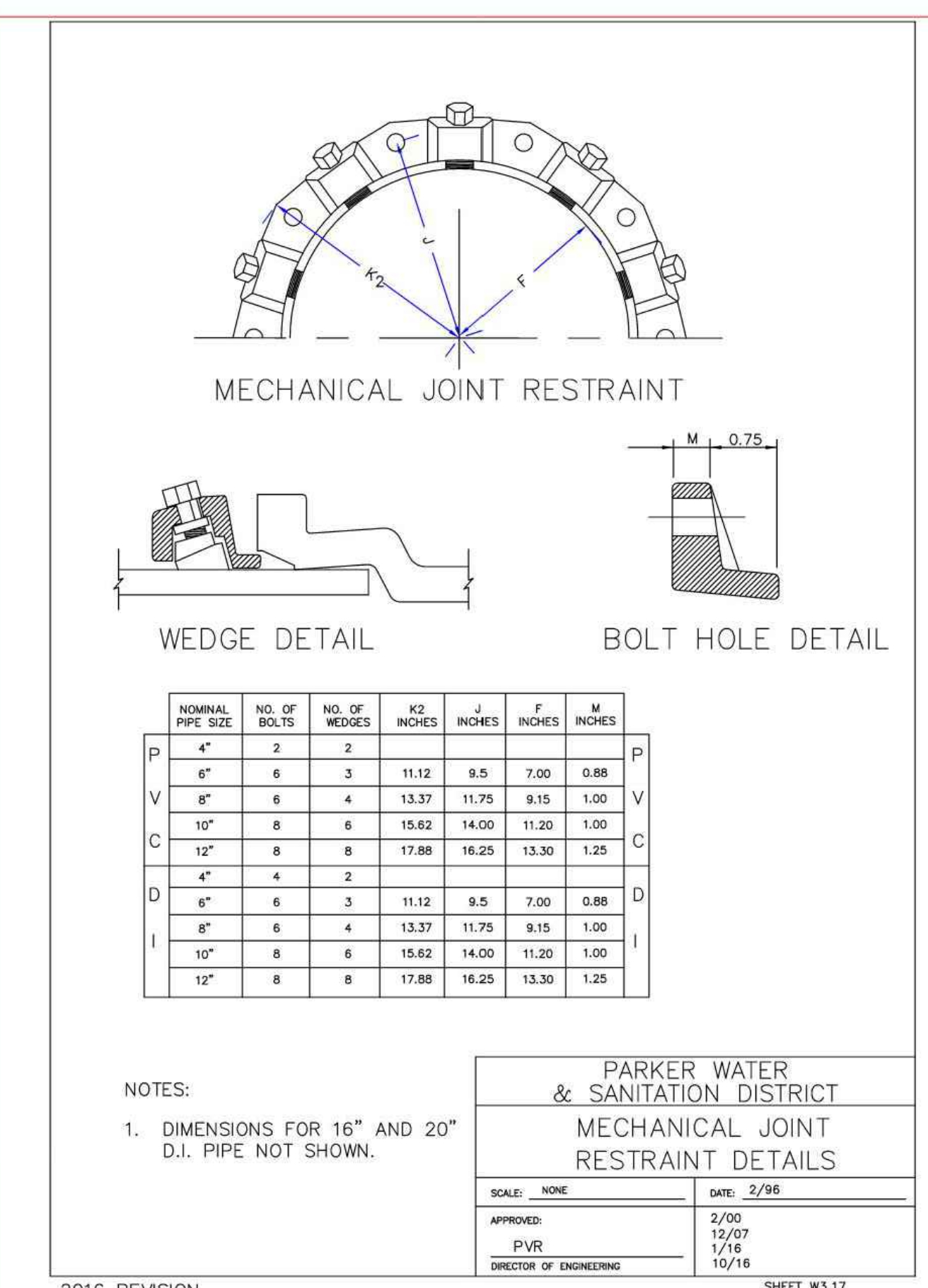
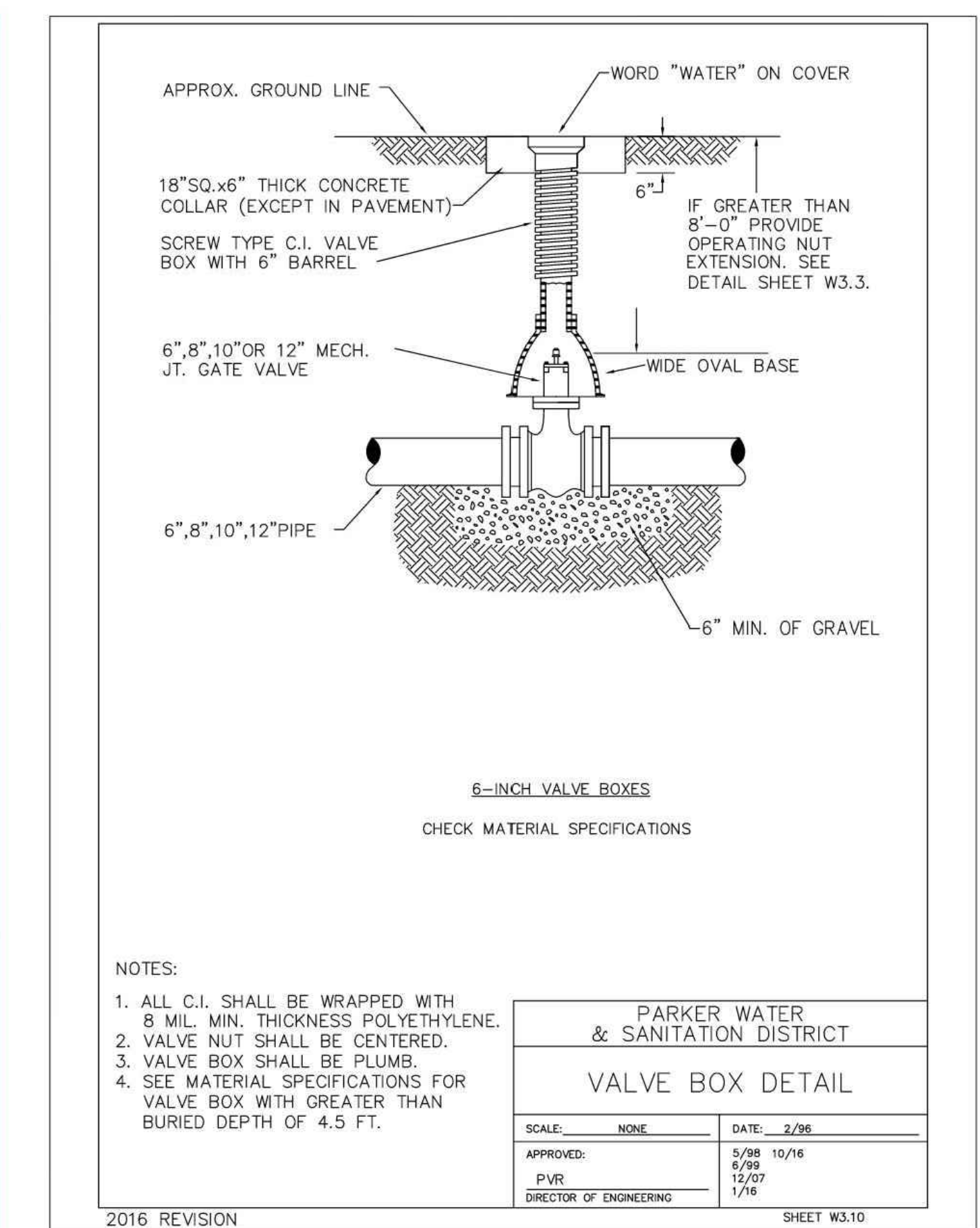
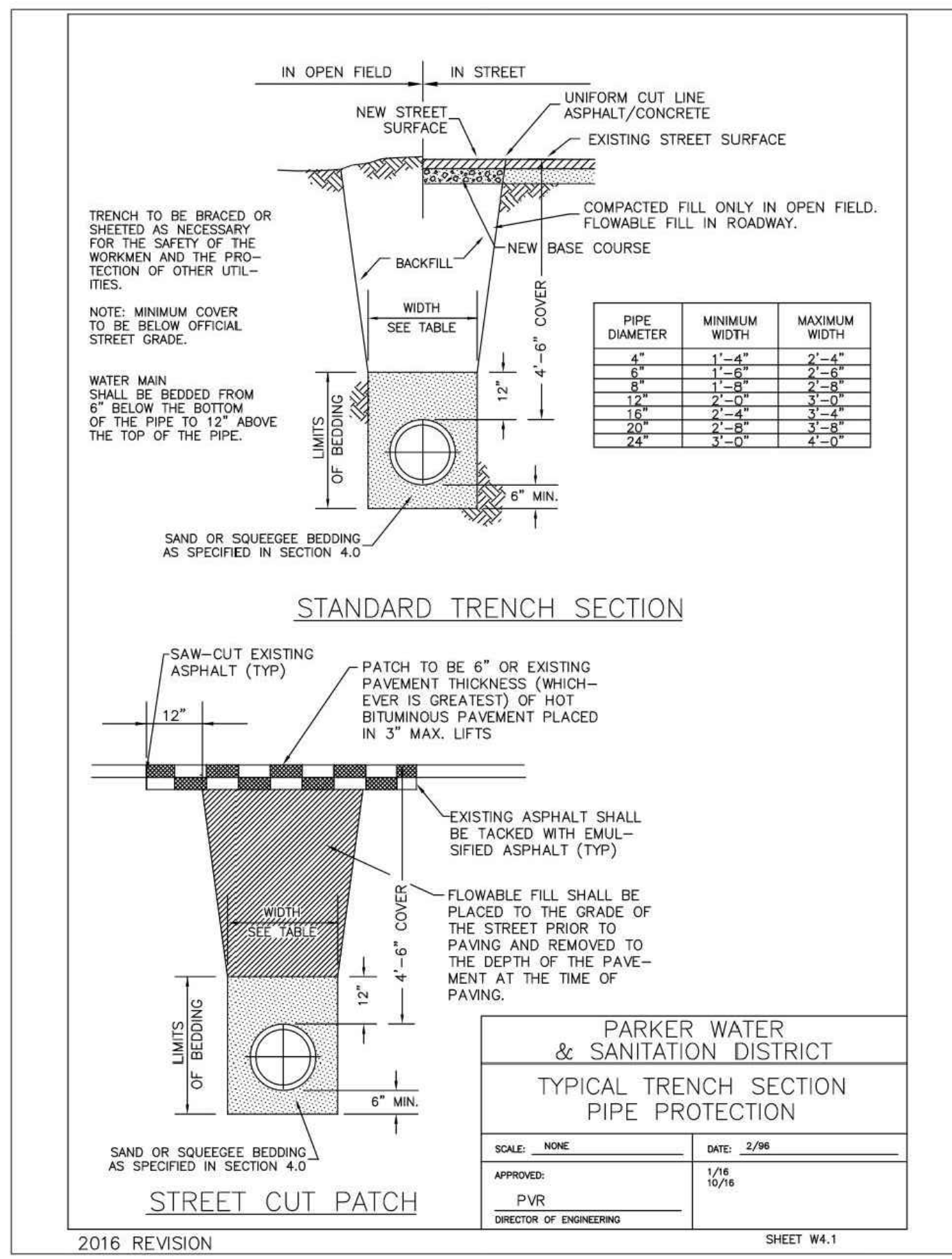
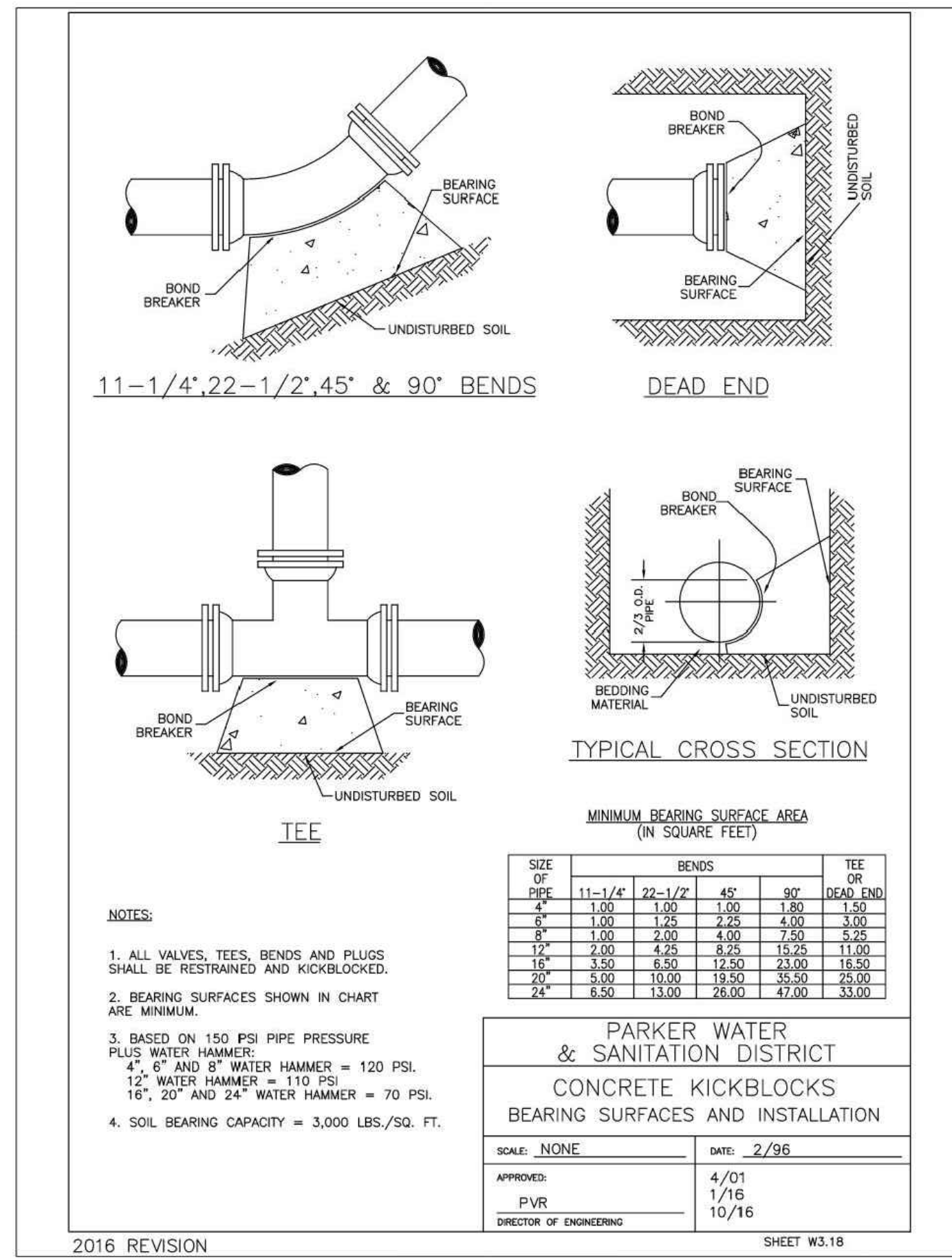
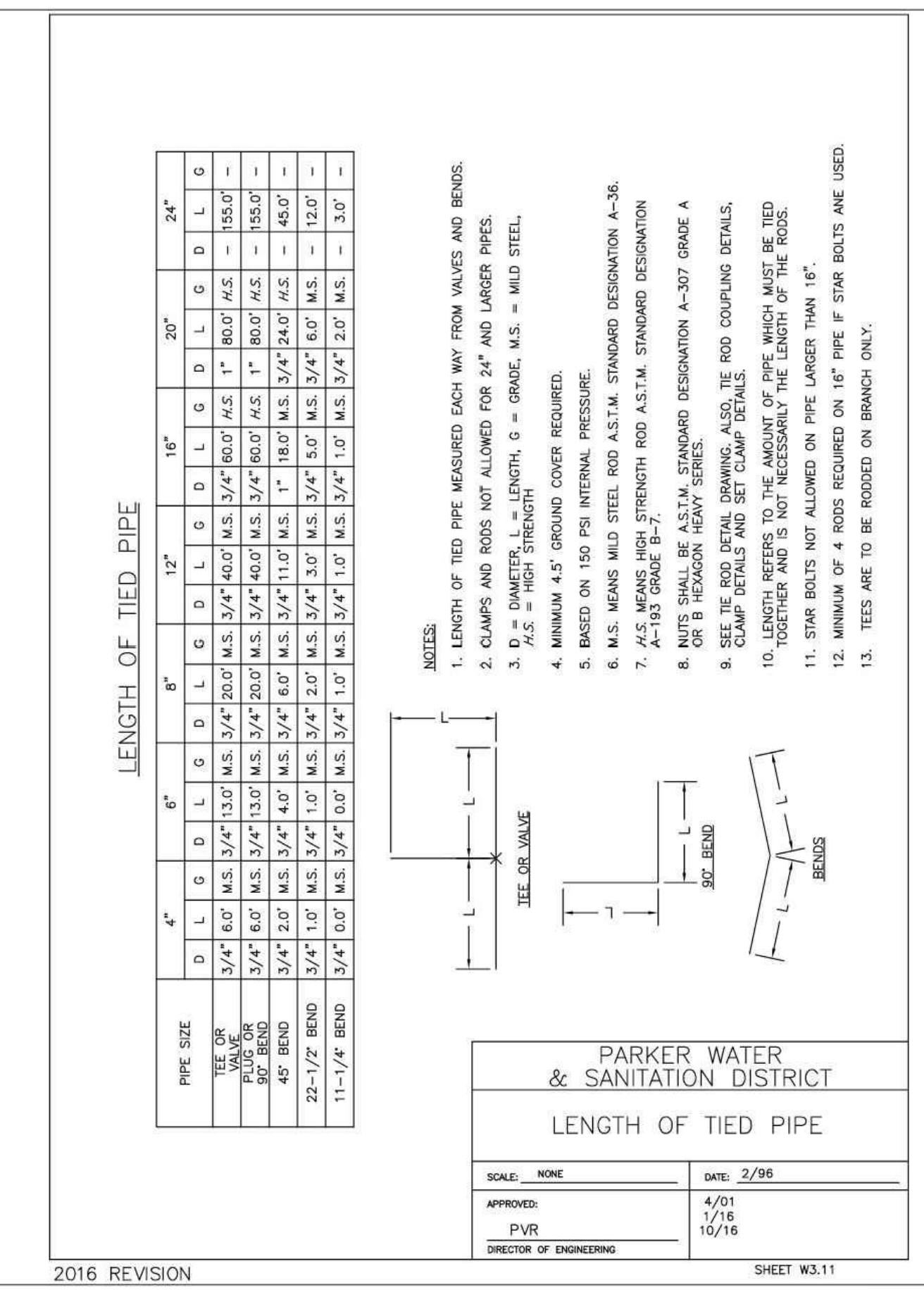
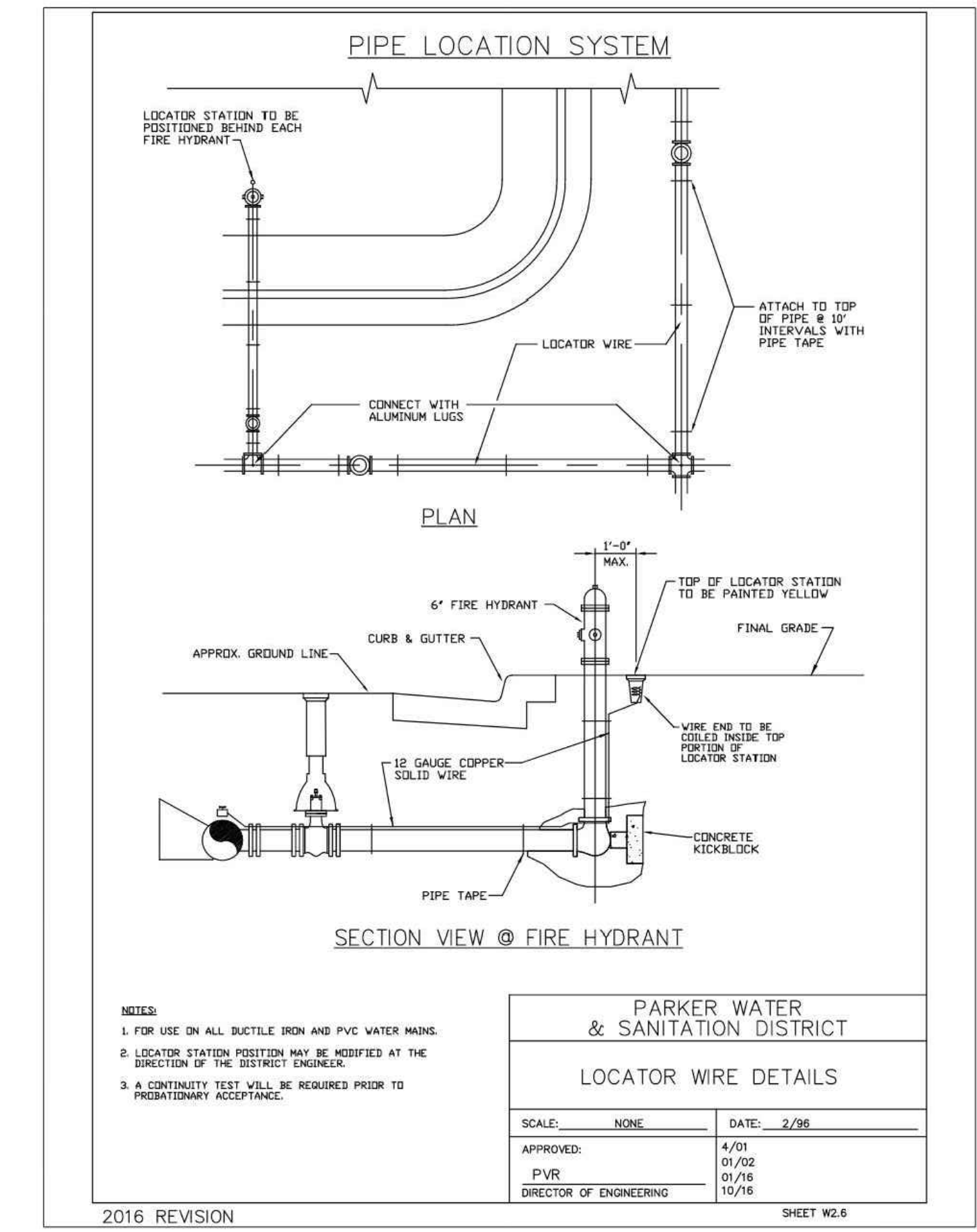
47666

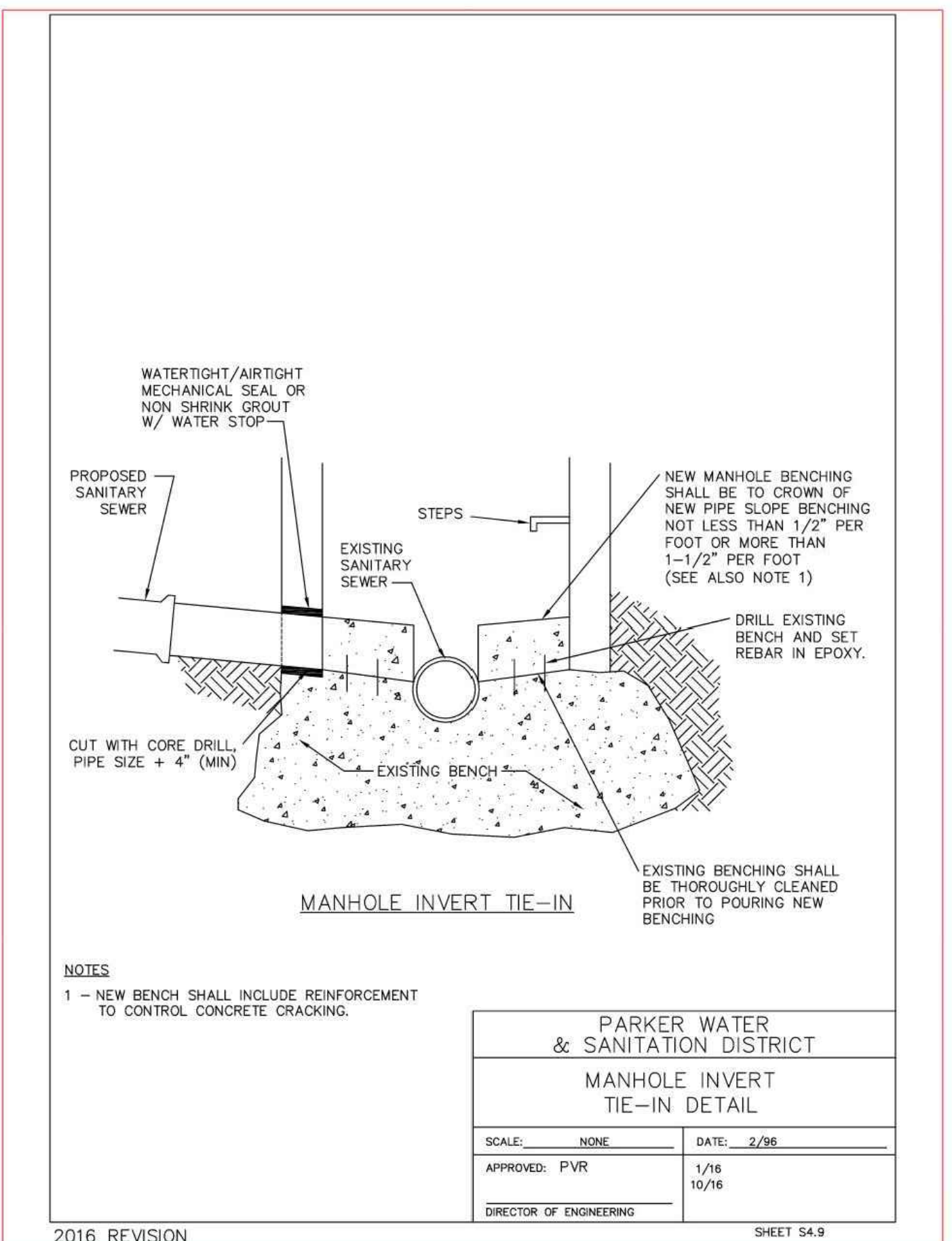
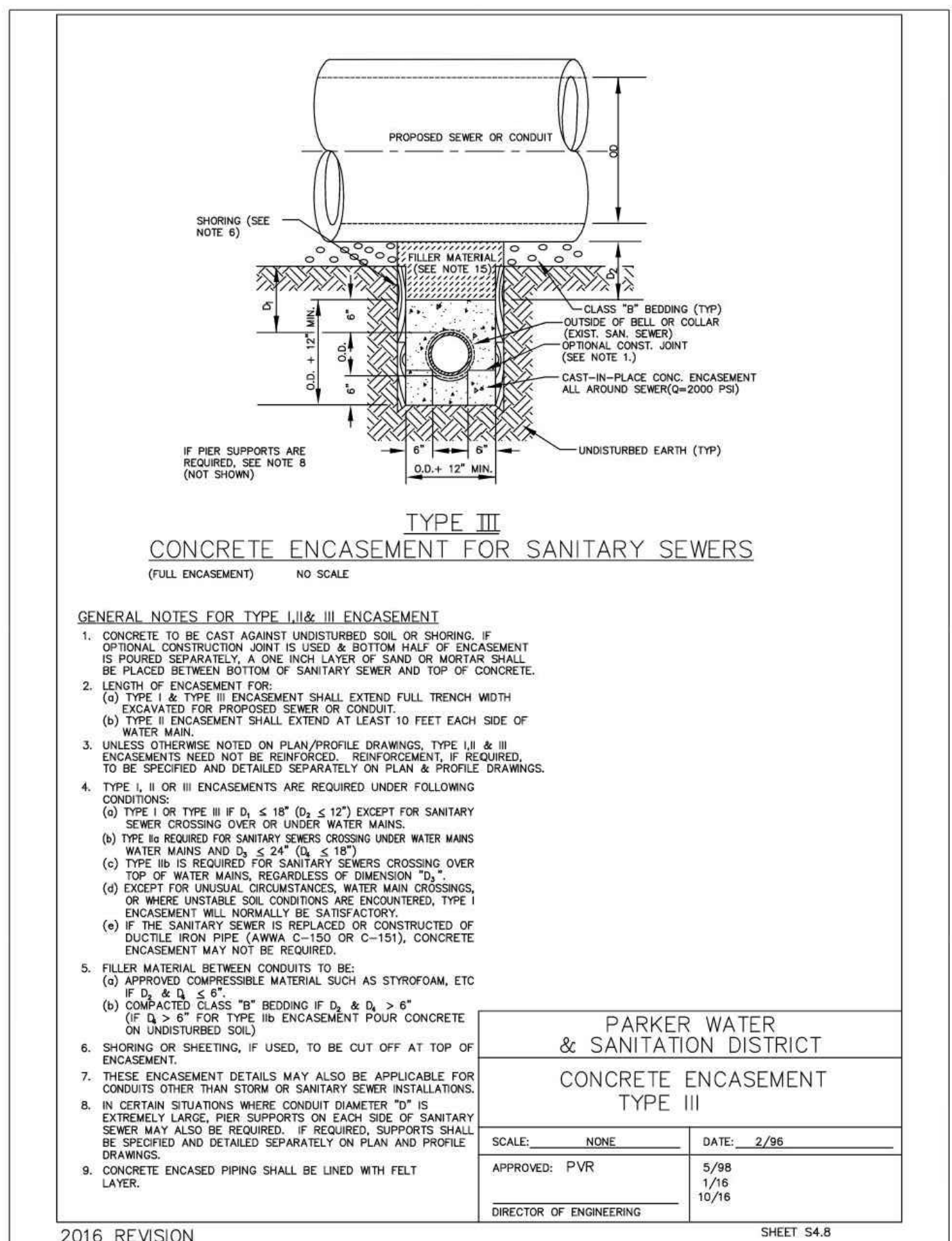
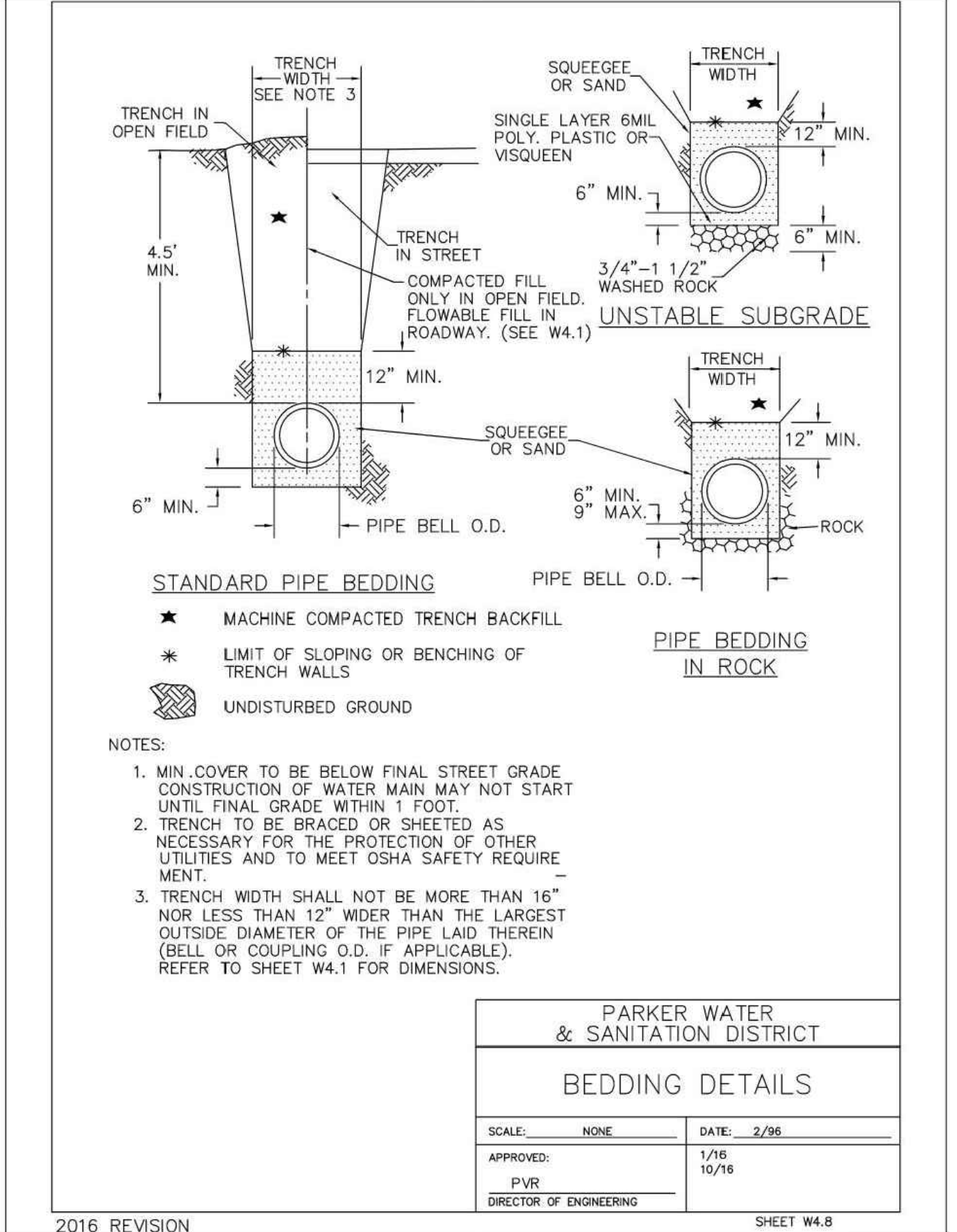
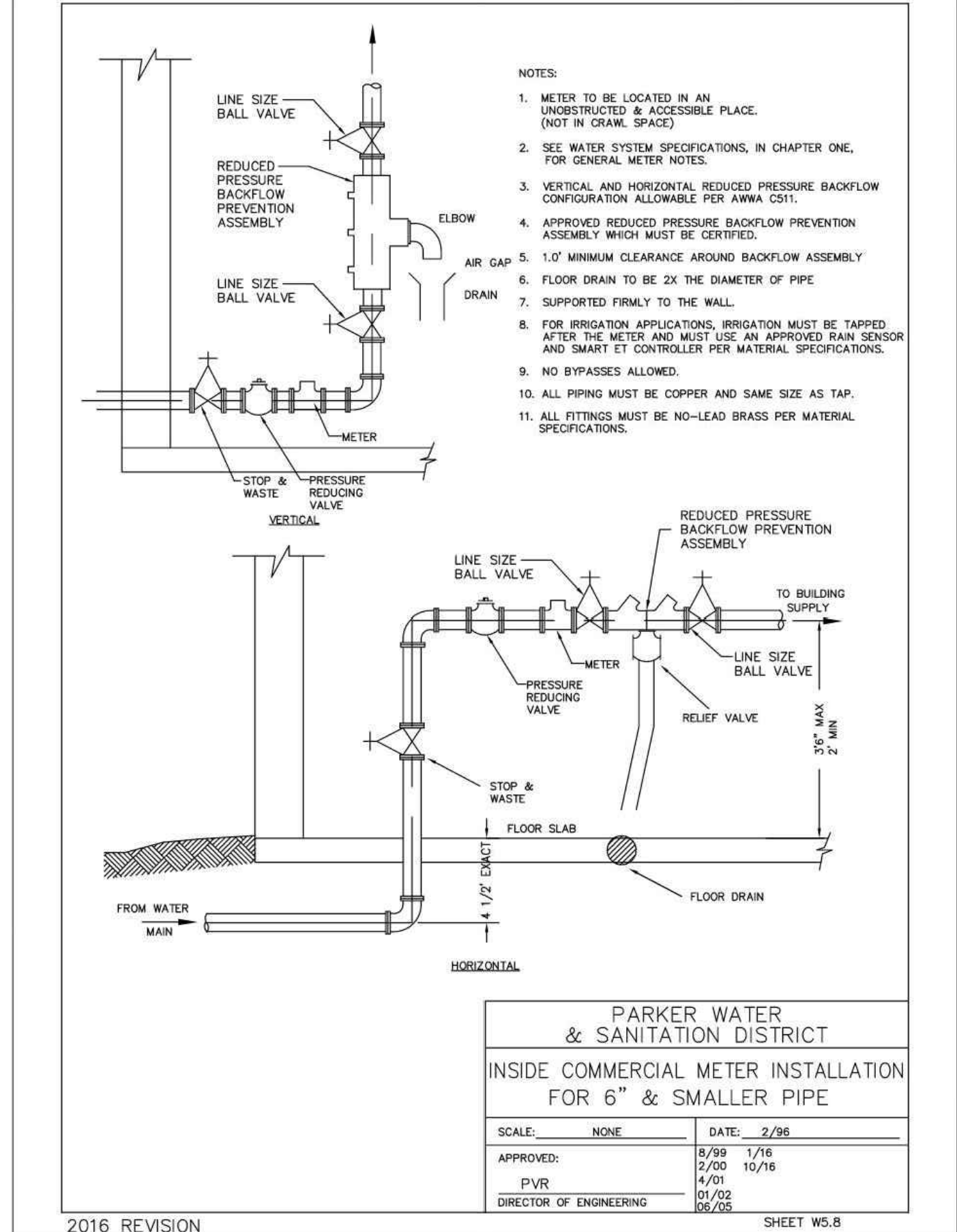
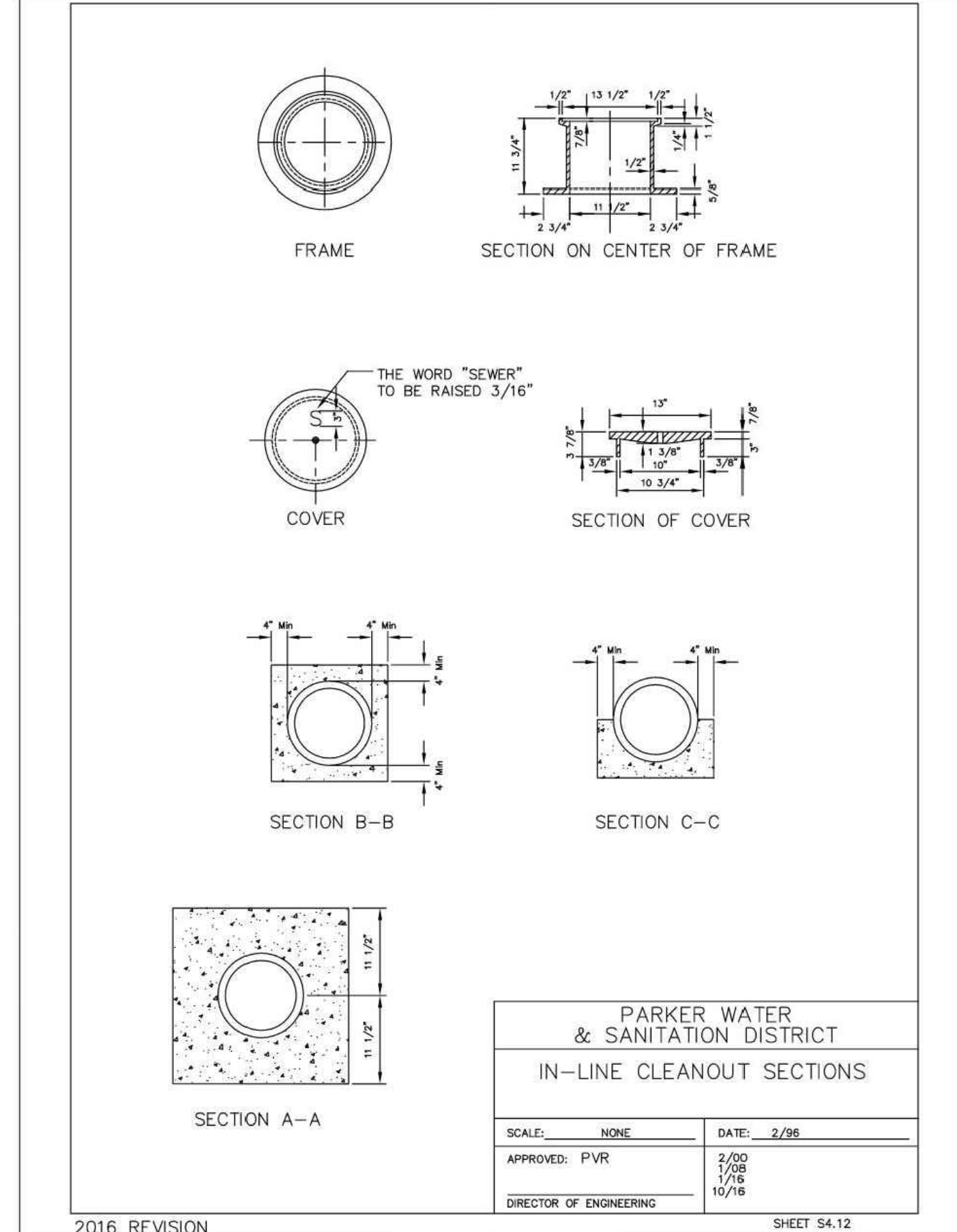
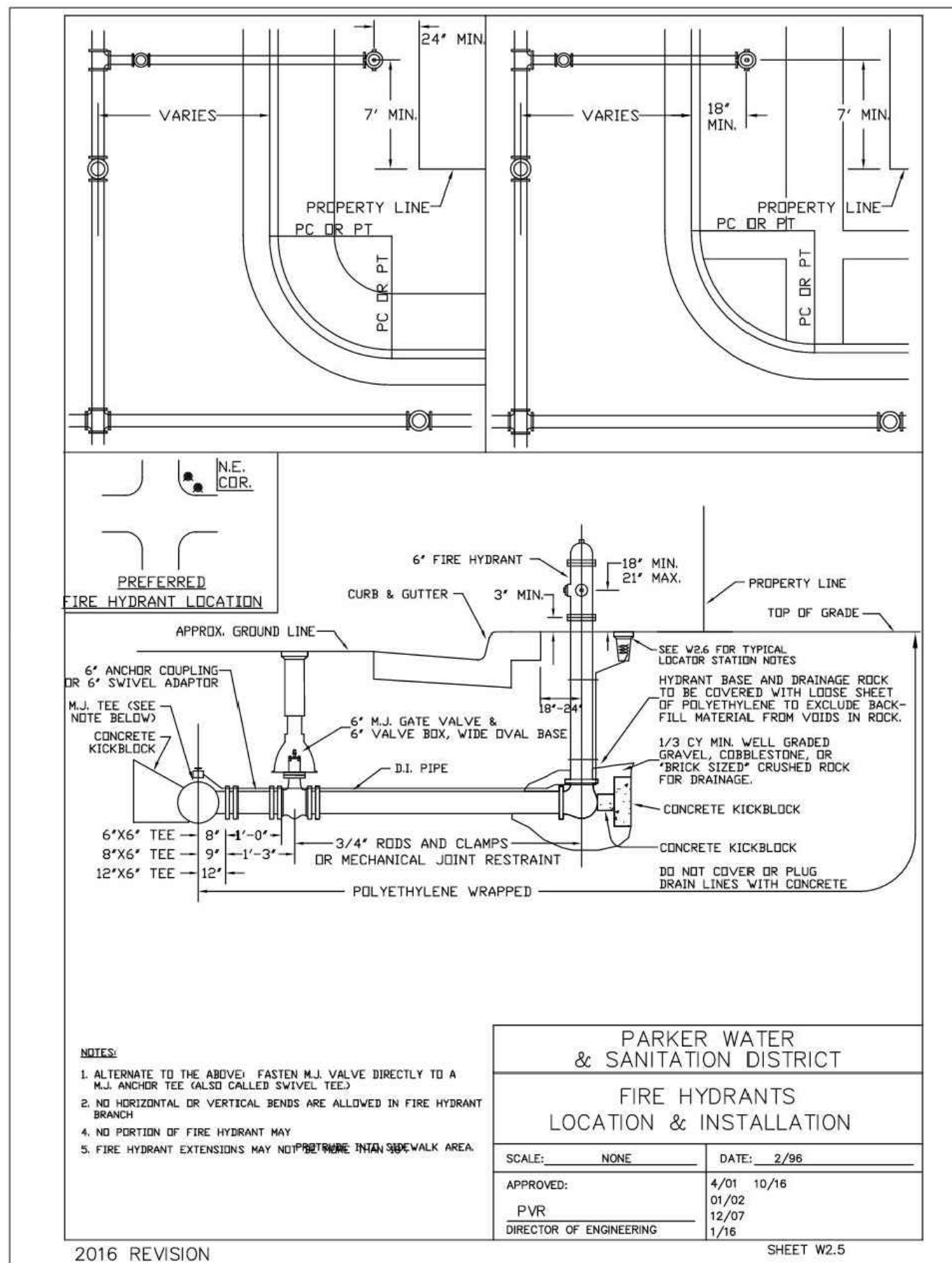
04/11/24

DATE: 5/8 10/16

DATE: 6/28 12/27

DATE: 1/16 10/16





NO.	DESCRIPTION	DATE
1	FIRST TOWN SUBMITTAL	11/03/2023
2	SECOND TOWN SUBMITTAL	02/05/2024
3	THIRD TOWN SUBMITTAL	04/04/2024

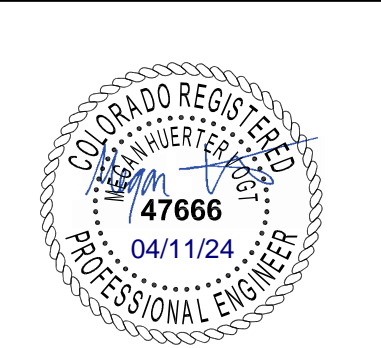
**PARKER TOWN HALL EXPANSION
20120 MAIN STREET
PARKER, CO 80138**

PROJECT:

WATER AND SANITARY DETAILS

DRAWING TITLE:

FILE PATH: C:\Users\ghDCA\Documents\S. A. Miros\Civil\Jobs\22139 Parker Town Hall\05 CAD\Plans and Details\C551-WATR-DTLS.dwg C552 - 4/10/2024



DESIGNED BY: RJH
DRAWN BY: DEI
CHECKED BY: MHV
MIRO JOB NO. 22139

DRAWING NUMBER:
C-552