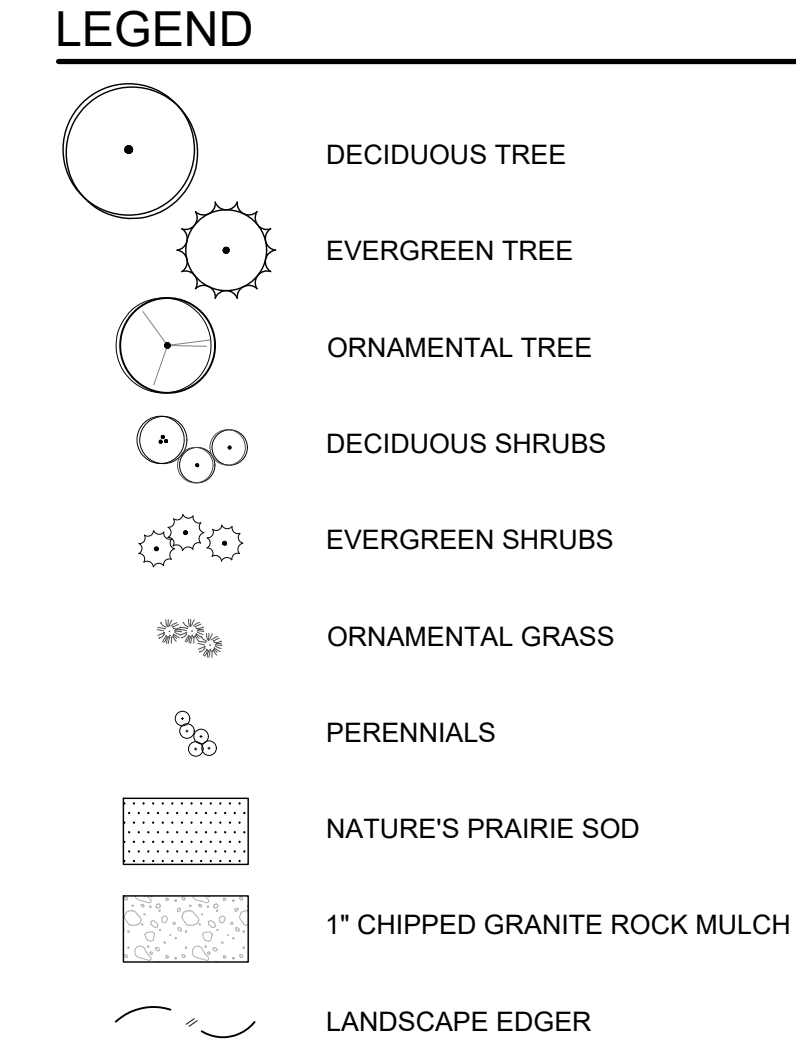
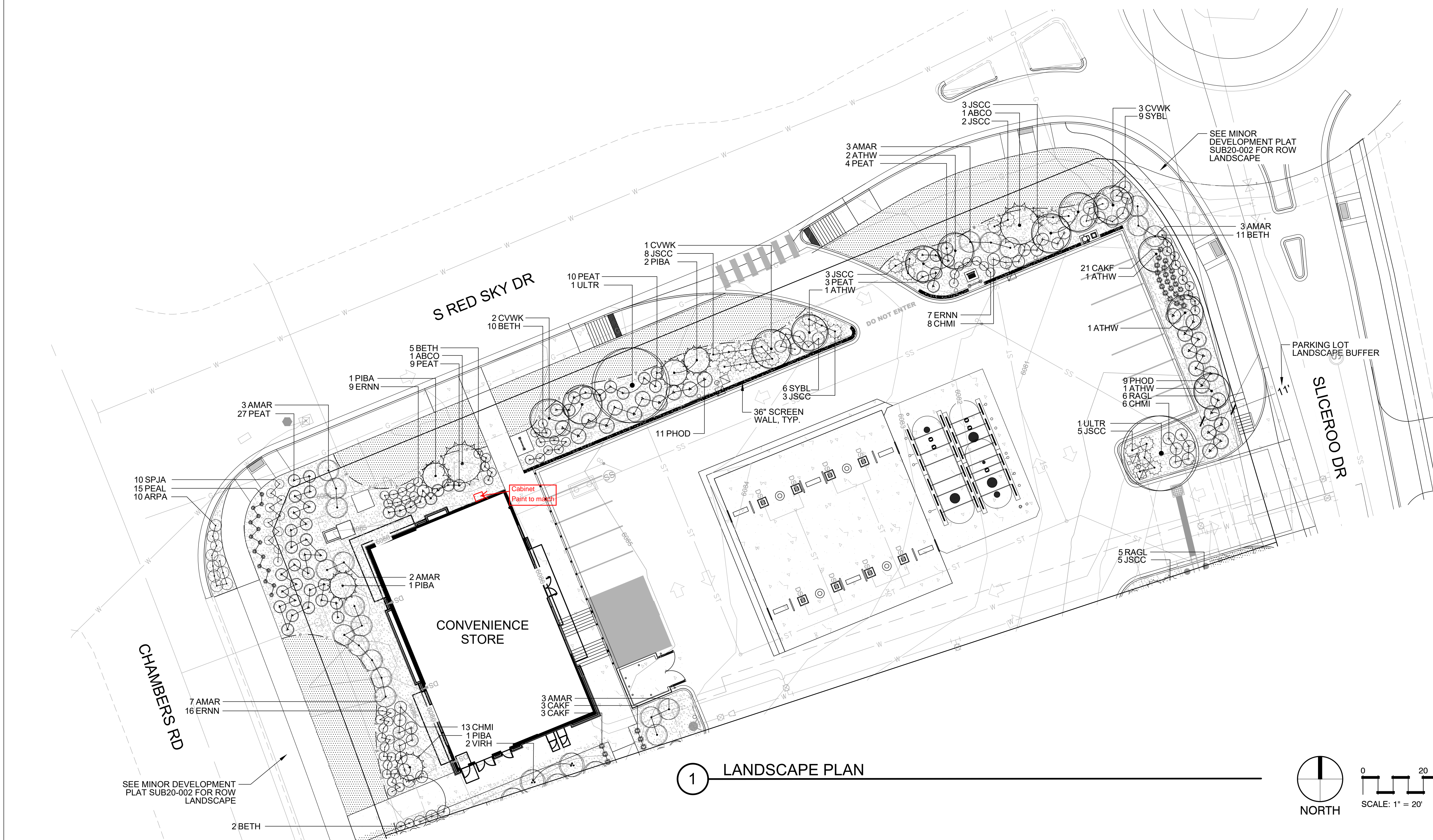


X:\DRGBOX\VALERIAN\VALERIAN TEAM\FOLDER\PROJECTS\20-085_EES_PARKER 7-ELEVEN & CAF\WORKINGS\2022-03-15_LAND_IR_CD20-085_1_LANDSCAPE PLAN_7-11.DWG



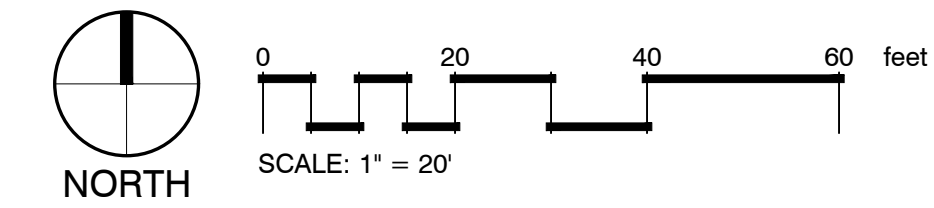
PARKER
COLORADO

Final Document
Subject To Conditions In Approval Letter

APPROVED DATE: 04/14/2022

Planning Approval By: J. Duncan

1 LANDSCAPE PLAN



PLANT SCHEDULE LOT 1

DECIDUOUS TREES	QTY	BOTANICAL NAME	COMMON NAME	CONT	CAL	HT X SP
ULTR	2	ULMUS X TRIUMPH	TRIUMPH ELM	B & B	2.5\"/>	
EVERGREEN TREES	QTY	BOTANICAL NAME	COMMON NAME	CONT	CAL	HT X SP
ABCO	2	ABIES CONCOLOR	WHITE FIR	B & B	6\"/>	
PIBA	5	PICEA PUNGENS 'BAKERI'	BLUE SPRUCE	B & B	6\"/>	
ORNAMENTAL TREES	QTY	BOTANICAL NAME	COMMON NAME	CONT	CAL	HT X SP
ATHW	6	ACER TATARICUM 'GARANN'	HOT WINGS TATARIAN MAPLE	B & B	2\"/>	
CVWK	6	CRATAEGUS VIRIDIS 'WINTER KING'	WINTER KING HAWTHORN	B & B	2\"/>	
DECIDUOUS SHRUBS	QTY	BOTANICAL NAME	COMMON NAME	CONT		
AMAR	21	AMELANCHIER ALNIFOLIA 'REGENT'	SASKATOON SERVICEBERRY	#5		8' X 8'
ARPA	10	ARCTOSTAPHYLOS 'PANCHITO'	PANCHITO MANZANITA	#5		2' X 4'
BETH	28	BERBERIS THUNBERGII 'CRIMSON PYGMY'	CRIMSON PYGMY JAPANESE BARBERRY	#5		3' X 3'
CHMI	27	CHAMAEBATIARIA MILLEFOLIUM 'FERNBUSH'	FERNBUSH	#5		4' X 4'
ERNN	32	ERICAMERIA NAUSEOSA NAUSEOSA	DWARF BLUE RABBITBRUSH	#5		3' X 3'
PEAT	53	PEROVSKIA ATRIPLICIFOLIA	RUSSIAN SAGE	#5		4\"/>
PHOD	6	PHYSOCARPUS OPULIFOLIUS 'DIABLO'	DIABLO NINEBARK	#5		6\"/>
RAGL	6	RHUS AROMATICA 'GRO-LOW'	GRO LOW SUMAC	#5		2\"/>
SPJA	10	SPIRAEA JAPONICA 'ALPINA'	DAPHNE JAPANESE SPIREA	#5		3\"/>
SYBL	15	SYRINGA X 'BLOOMERANG'	BLOOMERANG LILAC	#5		4\"/>
VIRH	2	VIBURNUM X RHYTIDOPHYLLOIDES 'ALLEGHANY'	ALLEGHANY VIBURNUM	#5		8\"/>
EVERGREEN SHRUBS	QTY	BOTANICAL NAME	COMMON NAME	CONT		
JSCC	24	JUNIPERUS SABINA 'CALGARY CARPET'	CALGARY CARPET JUNIPER	#5		1\"/>
ORNAMENTAL GRASSES	QTY	BOTANICAL NAME	COMMON NAME	CONT		
CAKF	27	CALAMAGROSTIS ACTUIFLORA 'KARL FOERSTER'	FEATHER REED GRASS	#1		5\"/>
PEAL	15	PENNISETUM ALOPECUROIDES 'LITTLE BUNNY'	LITTLE BUNNY DWARF FOUNTAIN GRASS	#1		1\"/>
GROUND COVERS	QTY	BOTANICAL NAME	COMMON NAME	CONT @		
	4,860 SF		NATURE'S PRAIRIE SOD	SOD		

INTERNAL LANDSCAPE

NET SITE AREA	LANDSCAPE AREA			% LIVE COVER					
	REQUIRED 15%	PROVIDED	SURPLUS/ DEFICIT	REQUIRED (75%)	PROVIDED	SURPLUS/ DEFICIT			
40,531 SF	6,080 SF	11,029 SF	+4,949 SF	8,272 SF	8,966 SF	+694 SF			
	TREE REQUIREMENT 1/1500 SF			SHRUB REQUIREMENT 5/1500 SF			TREE EQUIVALENT CALCULATION		
	REQUIRED	PROVIDED	SURPLUS/ DEFICIT	REQUIRED	PROVIDED	SURPLUS/ DEFICIT	SHRUBS AVAILABLE FOR EQUIVALENTS	TOTAL EQUIVALENT TREES	TOTAL TREE & TREE EQUIVALENTS PROVIDED
	5	1	-4	21	57 & 12 GRASSES	+40	40	4	5

STREETSCAPE

LOCATION	LENGTH	TREE REQUIREMENT 1/40 LF			SHRUB REQUIREMENT 5/1500 SF			TREE EQUIVALENT CALCULATION		
		REQUIRED	PROVIDED	SURPLUS/ DEFICIT	REQUIRED	PROVIDED	SURPLUS/ DEFICIT	SHRUBS AVAILABLE FOR EQUIVALENTS	TOTAL EQUIVALENT TREES	TOTAL TREE & TREE EQUIVALENTS PROVIDED
S RED SKY DR	195	5	5	0	NA	NA	NA	NA	NA	5

LANDSCAPE PERIMETER ENHANCED

LOCATION	LENGTH / PERCENT	TREE REQUIREMENT 1/25 LF			SHRUB REQUIREMENT 5/25 LF			TREE EQUIVALENT CALCULATION		
		REQUIRED	PROVIDED	SURPLUS/ DEFICIT	REQUIRED	PROVIDED	SURPLUS/ DEFICIT	SHRUBS AVAILABLE FOR EQUIVALENTS	TOTAL EQUIVALENT TREES	TOTAL TREE & TREE EQUIVALENTS PROVIDED
NORTH	289	12	9	-3	58	88	+30	30	3	12
EAST	140	6	4	-2	28	41 & 21 GRASSES	+20	20	2	6
WEST	108	5	2	-3	22	52	+30	30	3	5

	REQUIRED	PROVIDED
TOTAL TREES/TE'S	33	33
TOTAL SHRUBS	129	238
TOTAL GRASSES	NA	33

PLANT REQUIREMENT NOTES:

1. ORNAMENTAL GRASSES AND PERENNIALS ARE COUNTED TOWARD TE'S AS 3 GRASSES = 1 SHRUB. ALL GRASS SUBSTITUTIONS APPLY TO REQUIRED SHRUB NUMBERS, NOT TE'S.

EVERGREEN TREE REQUIREMENT - OVERALL SITE

MINIMUM EVERGREEN REQ.	25%	
NUMBER OF TREES	REQUIRED	PROVIDED
21 TOTAL	6	7

TURF

MAXIMUM ALLOWED	6,080 SF - 15%
PROVIDED	2,899 SF - 7.1%

PARKING LOT PERIMETER BUFFER

REQUIRED	10' BUFFER
PROVIDED	11' BUFFER

CALL UTILITY NOTIFICATION CENTER OF COLORADO
1-800-922-1987 or 811

Know what's below. Call before you dig.

CALL 3-BUSINESS DAYS (NOT INCLUDING INITIAL DAY OF CONTACT) IN ADVANCE BEFORE YOU DIG, GRADE, OR EXCAVATE FOR THE MARKING OF UNDERGROUND MEMBER UTILITIES.

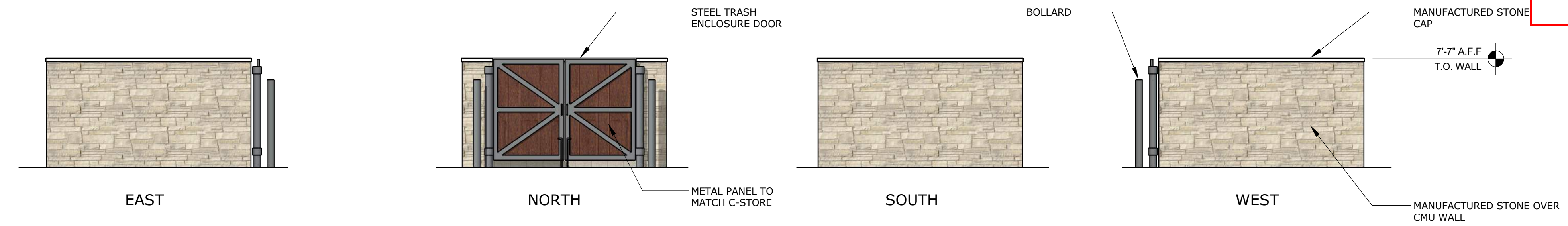
BY	DATE	REVISION	No.
NR	12/22/21	REVISIONS PER CITY COMMENTS	3
NR	01/11/22	REVISIONS PER CITY COMMENTS	4
NR	02/04/22	REVISIONS PER CITY COMMENTS	5
NR	03/10/22	REVISIONS PER CITY COMMENTS	6
NR	03/15/22	REVISIONS PER CITY COMMENTS	7

EES
ENGINEERING AND ARCHITECTURE
SOLUTIONS, INC.
501 S Cherry St, Suite 300
Denver, CO 80246
303.572.7897 www.eesusa.com

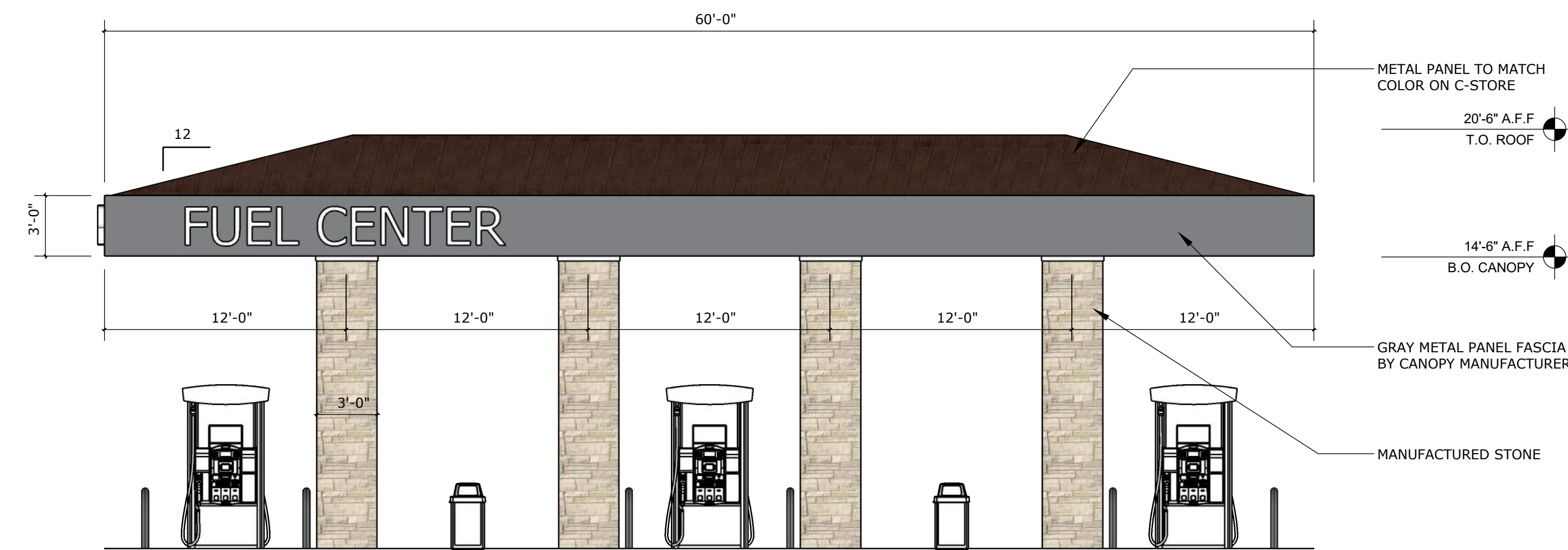
SITE PLAN LOT 1
CONVENIENCE STORE
CHAMBERS AND HESS, PARKER, CO
LANDSCAPE PLAN

PROJECT NO.: TSD003.01
DESIGNED BY: NR
DRAWN BY: NR
DATE: 05/18/21

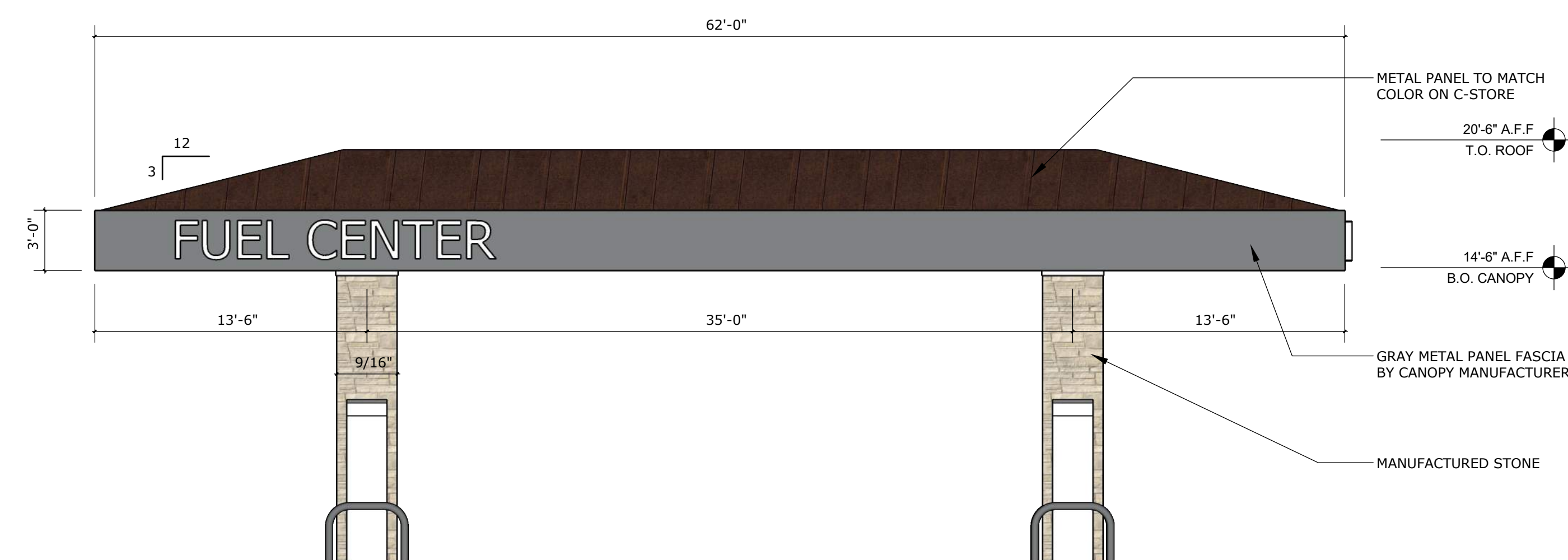
L1.1



DUMPSTER ELEVATIONS



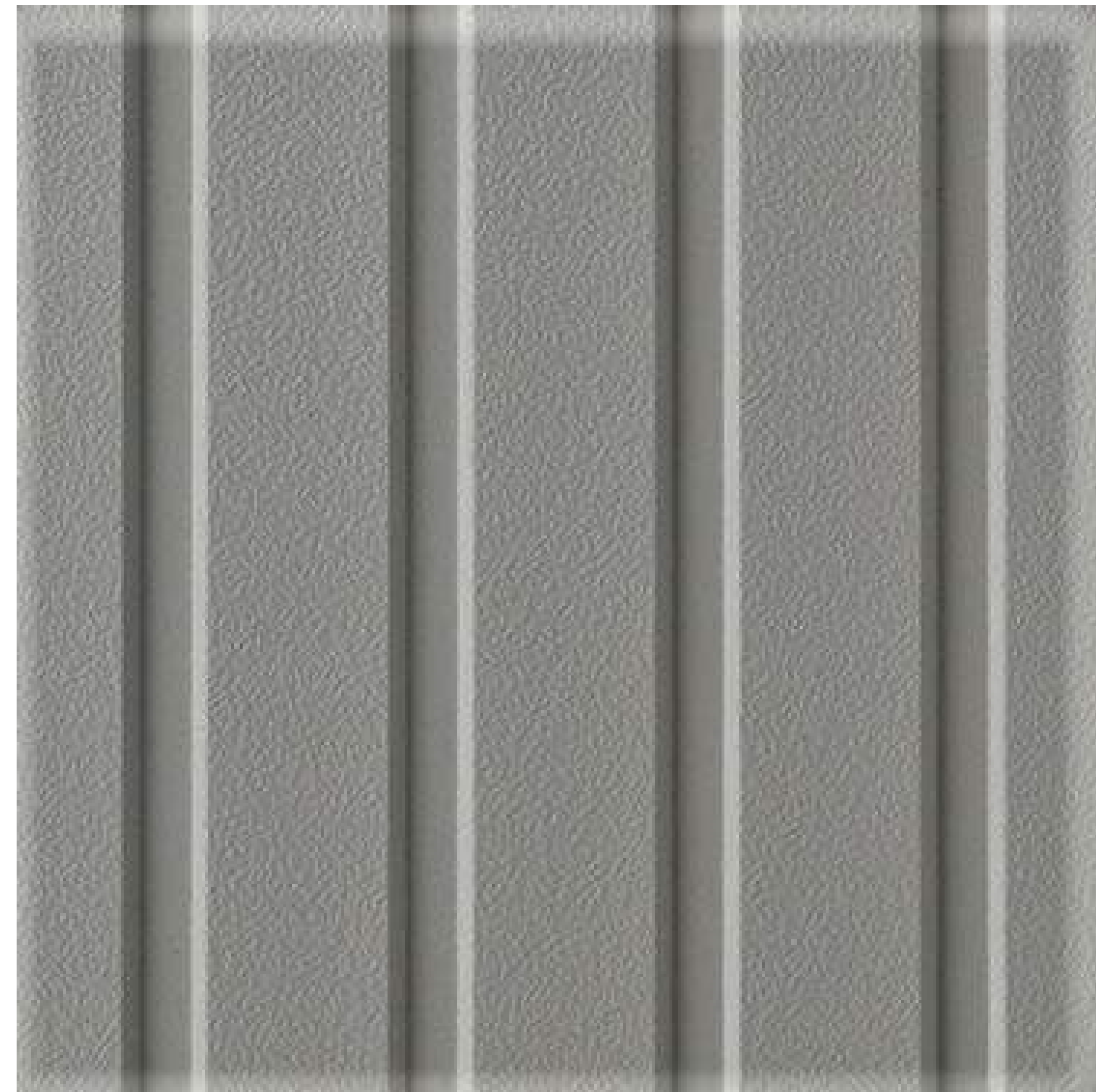
NORTH & SOUTH ELEVATIONS



EAST & WEST ELEVATIONS

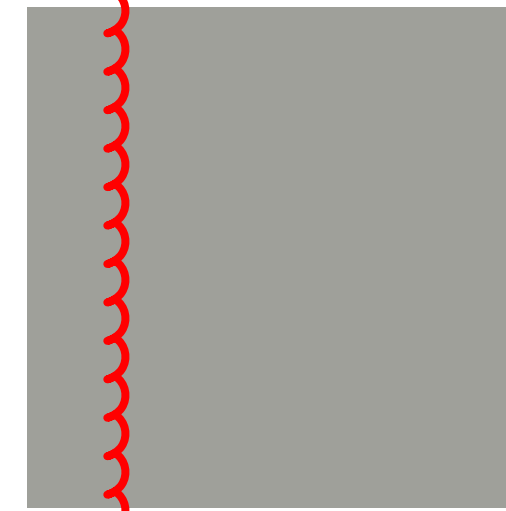
GENERAL NOTES:
SIGNAGE IS A PLACE HOLDER AND WILL BE OBTAINED UNDER A SEPARATE PERMIT.

NICHIHA - RIBBED PANEL
SW7655 STAMPED CONCRETE



Color is SW 7655
which is really Ivory

SW 7655 STAMPED
CONCRETE



SW 9565 FORGED
STEEL



NICHIHA VINTAGE WOOD



BLACK ANODIZED
STOREFRONT



METAL PANEL

MATERIAL BOARD SAMPLE PHOTOS



NICHIHA BLUFF LEDGESTONE