

Owner
New Horizon Academy
3405 Annapolis Lane
N., Suite 100
Plymouth, MN 55447
763.557.1111

Architect
Short Elliott Hendrickson, Inc.
2000 South Colorado Boulevard
Tower One, Suite 6000
Denver, Colorado 80222
720.540.6800

Landscape Architect
Short Elliott Hendrickson, Inc.
10901 Red Circle Drive
Suite 300
Minnetonka, MN 55343
952.912.2600

Civil Engineer
Short Elliott Hendrickson, Inc.
2000 South Colorado Boulevard
Tower One, Suite 6000
Denver, Colorado 80222
720.540.6800

Structural Engineer
Short Elliott Hendrickson, Inc.
3535 Vadnais Center Drive
St. Paul, MN 55110
651.490.2000

Mechanical Engineer
Short Elliott Hendrickson, Inc.
3535 Vadnais Center Drive
St. Paul, MN 55110
651.490.2000

Electrical Engineer
Short Elliott Hendrickson, Inc.
3535 Vadnais Center Drive
St. Paul, MN 55110
651.490.2000

NEW HORIZON ACADEMY -
DOUGLAS 234 FILING, NO. 6
PARKER, CO

This drawing is an instrument of service and shall remain the property of Short Elliott Hendrickson, Inc. (SEH). This drawing and the concepts and ideas contained herein shall not be used, reproduced, revised, or retained without the express written approval of SEH.

Submission or distribution of this drawing by means of email or regulatory requirements or for other purposes in connection with the project is not to be construed as publication in derogation of any of the rights of SEH.

SEH Project: NHOC 156217
Checked By: DRH
Drawn By: AMP

Project Status: CONSTRUCTION SET
Issue Date: 6/25/2021

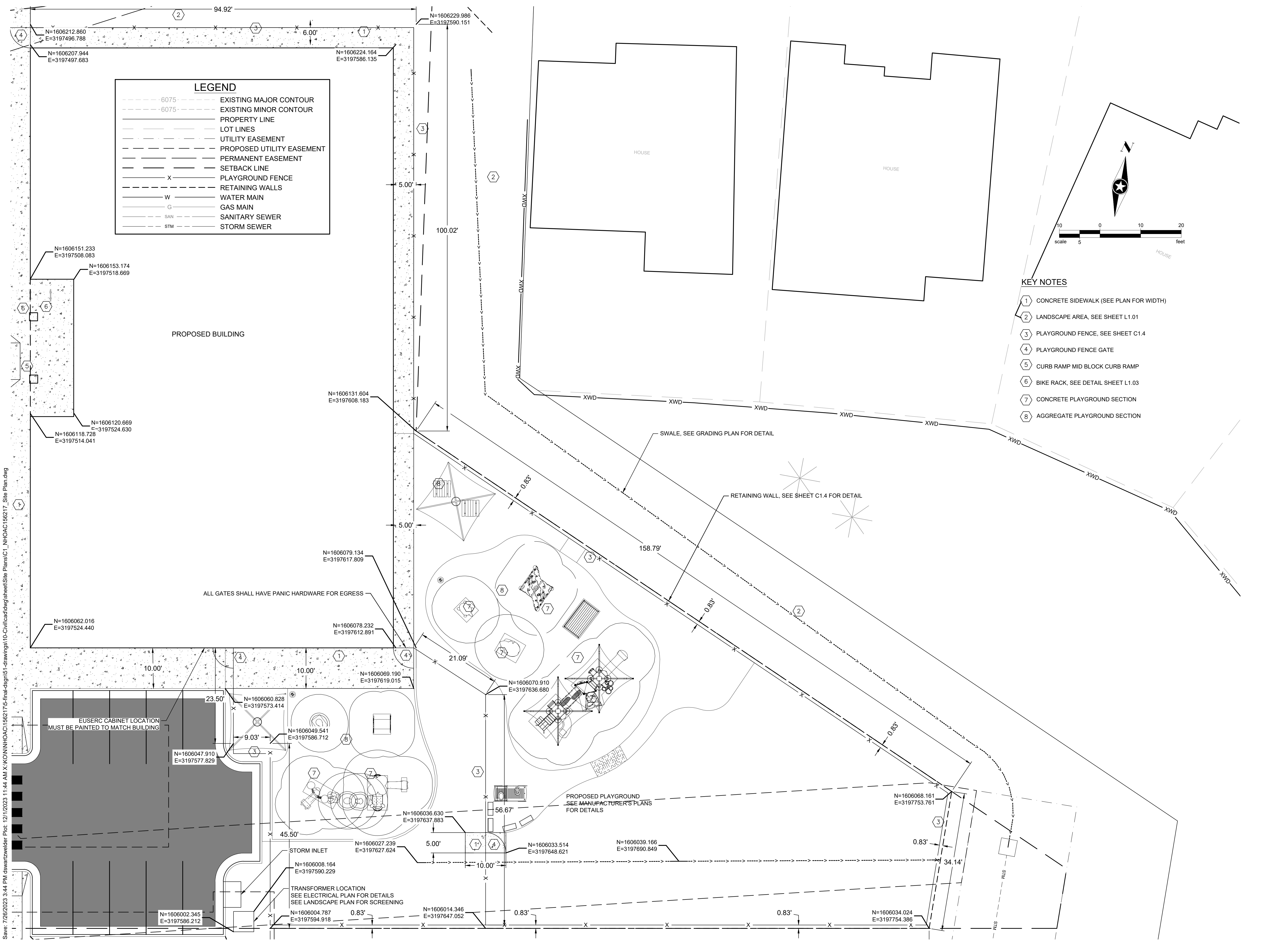
SEH Project: NHOC 156217
Checked By: DRH
Drawn By: AMP

Project Status: CONSTRUCTION SET
Issue Date: 6/25/2021

Rev. #	Description	Date
1	MOVE BACKFLOW PREVENTOR 10/31/22	
2	CORRECT PAVEMENT	
3	CHANGE FIRELINE TO CHAN PWD 3/13/23	
4	ADD VERT BENDS TO FIRELINE	6/6/23
5	GRADING ADJUST AT WEST	6/7/23
7	ADDENDUM 4	7/28/23

Revision Issue

BUILDING SITE LAYOUT



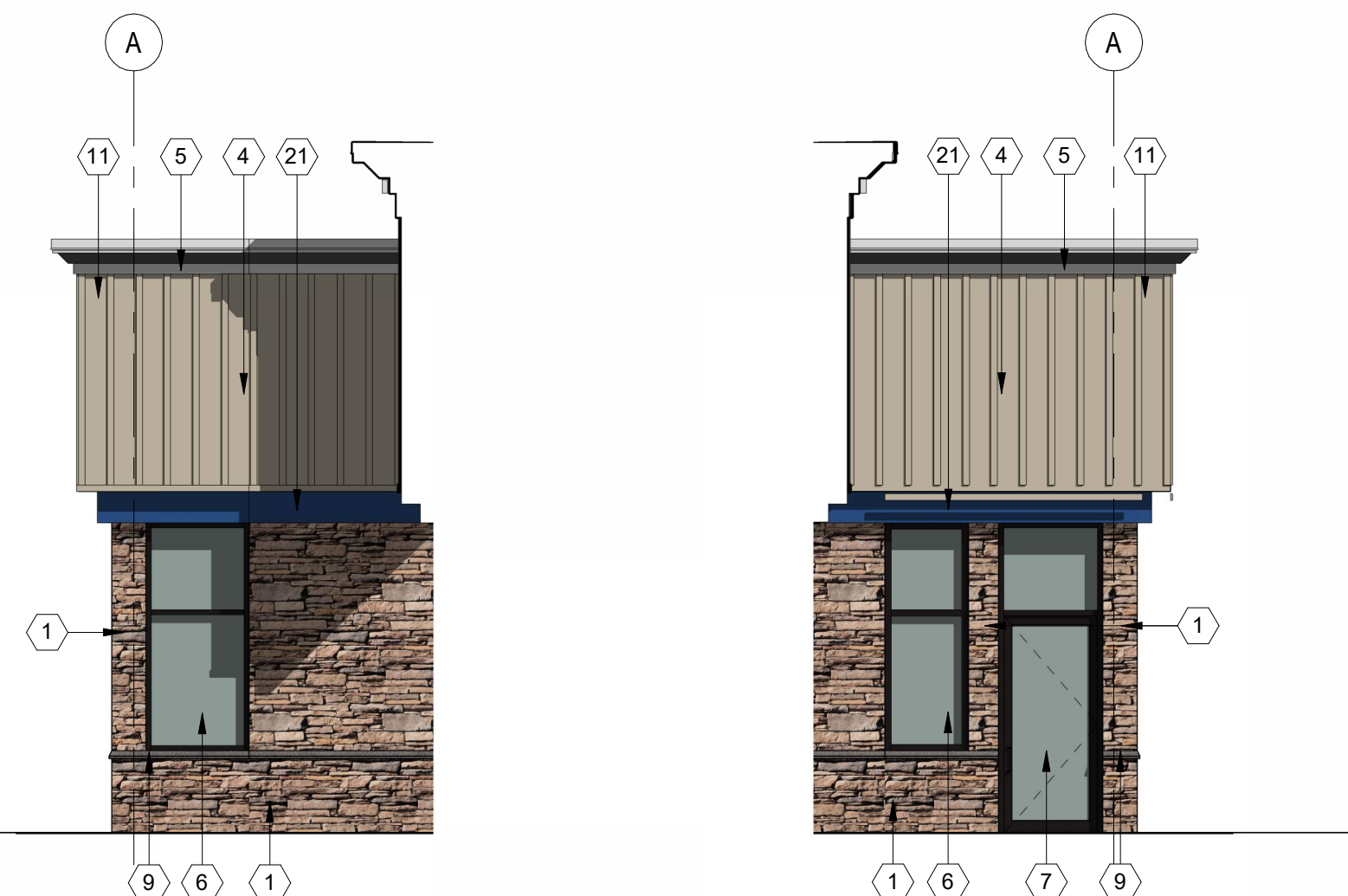
Save: 7/26/2023 3:44 PM dsawatzwelder Plot: 12/1/2023 11:44 AM X:\KONIN\HOAC\156217\5-final.dgn\1-drawings\10-Civil\dwg\sheet\Site Plans\C1_NHOAC156217_Site Plan.dwg



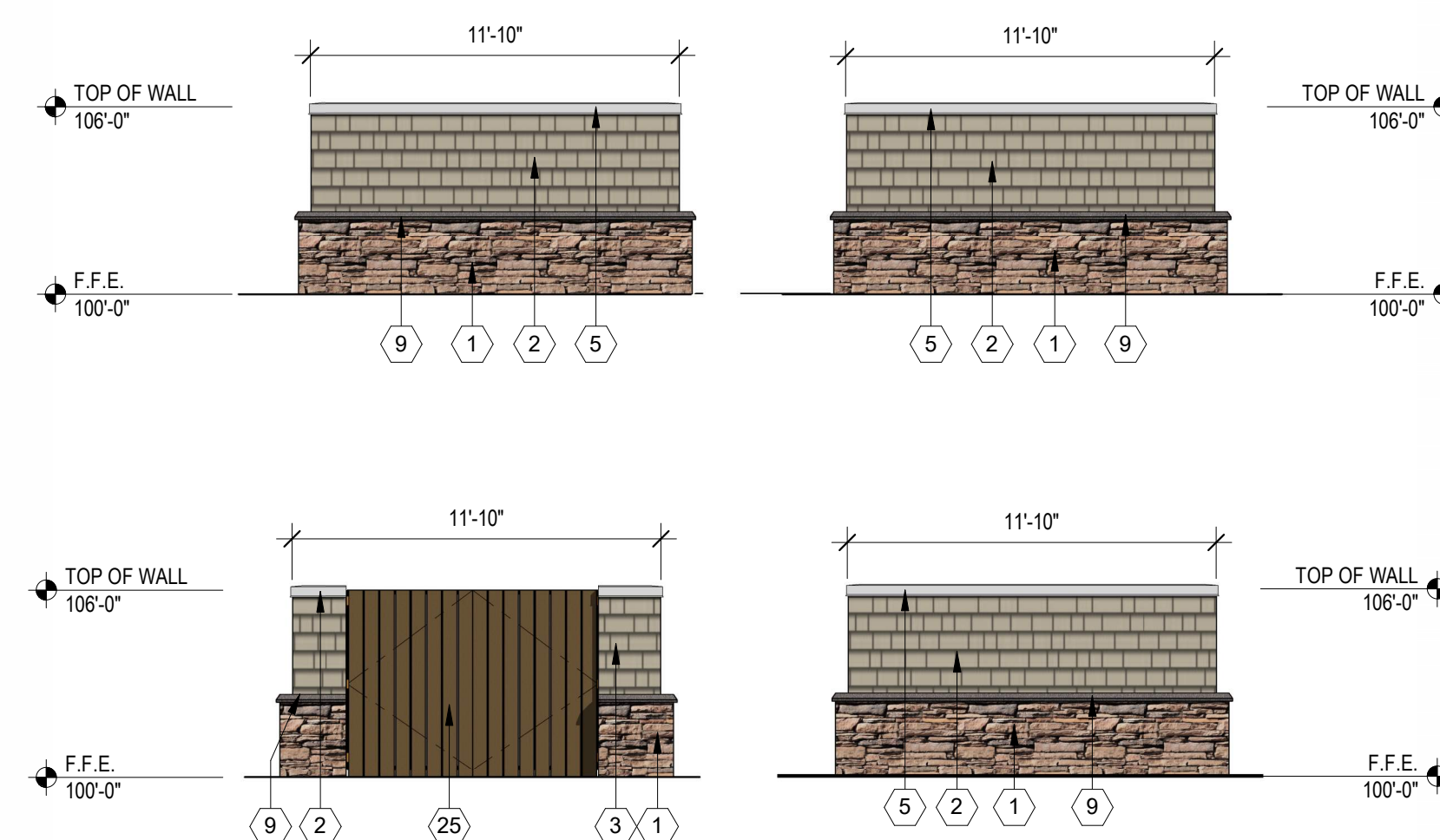
1 WEST ELEVATION
SCALE: 3/16" = 1'-0"
0' 2' 6' 12' 21'-4"



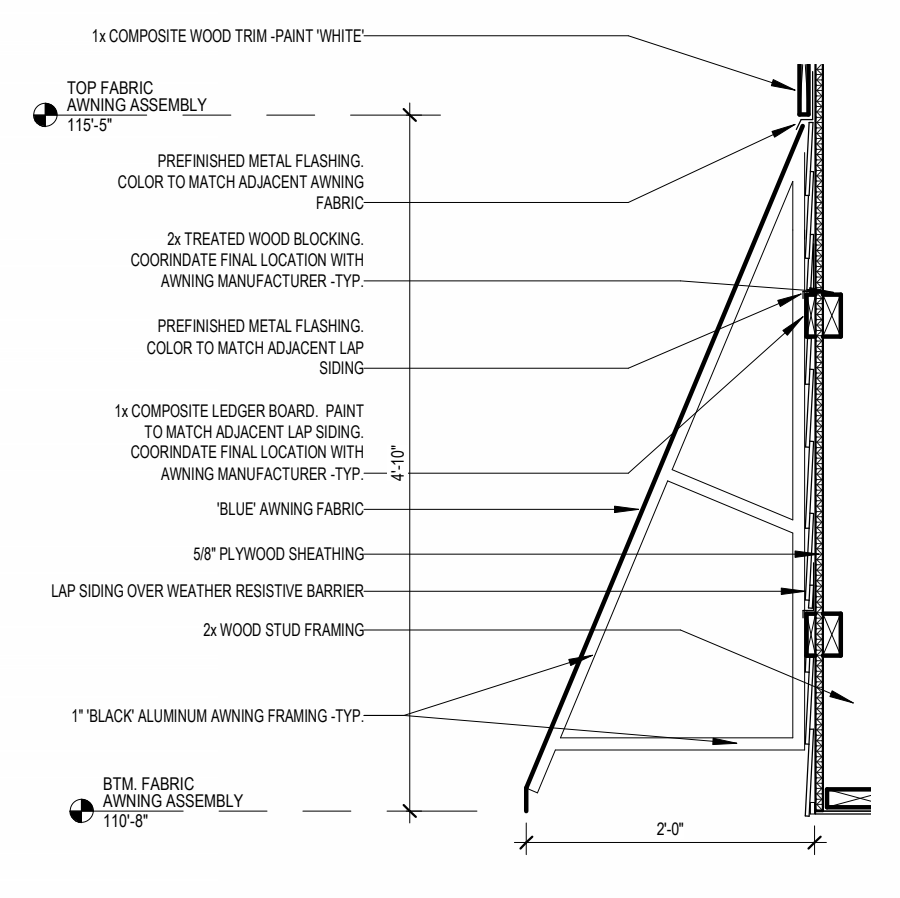
2 NORTH ELEVATION
SCALE: 3/16" = 1'-0"
0' 2' 6' 12' 21'-4"



3 NORTH ENTRY ELEVATION 3/16" = 1'-0"
4 SOUTH ENTRY ELEVATION 3/16" = 1'-0"



5 TRASH ENCLOSURE
3/16" = 1'-0"



6 FABRIC AWNING DETAIL
3/4" = 1'-0"

ELEVATION KEY NOTES (#)

1. STONE - COUNTRY LEDGESTONE 'CHARDONNAY' BY CULTURED STONE
2. FIBER CEMENT SHAKE SIDING - HARDIESHINGLE - STRAIGHT EDGE PANEL 'COBBLESTONE' BY JAMES HARDIE
3. FIBER CEMENT HORIZONTAL SIDING - HARDIEPLANK - SMOOTH - 'COBBLESTONE' BY JAMES HARDIE
4. FIBER CEMENT BOARD AND BATTEN SIDING - HARDIEPANEL VERTICAL SIDING - SMOOTH - 'COBBLESTONE' WITH HARDIETRIM BOARD - SMOOTH BATTEN BOARD - 'COBBLESTONE' BY JAMES HARDIE
5. PREFINISHED METAL COPING - 'WHITE'
6. ALUMINIUM STOREFRONT FRAMING / GLAZING ASSEMBLY - INSULATED LOW-E GLASS WITH 'DARK BRONZE' ANODIZED ALUMINIUM FRAMES
7. ALUMINIUM DOOR / TRANSOM / GLAZING ASSEMBLY - INSULATED LOW-E GLASS WITH 'DARK BRONZE' ANODIZED ALUMINIUM FRAMES
8. HOLLOW METAL DOOR AND FRAME - PAINT TO MATCH 'DARK BRONZE'
9. ARCHITECTURAL PRECAST CONCRETE SILL
10. 14'-3" x 3'-7" EXTERIOR LED 'NEW HORIZON ACADEMY' AND 'SUN' SIGNAGE. SEE ELECTRICAL DRAWINGS FOR FURTHER INFORMATION.
11. EIFS CORNICE - PAINT 'WHITE'
12. PREFINISHED METAL SCUPPER AND 4"x6" DOWNSPOUT - 'DARK BRONZE'. CONNECT DOWNSPOUT TO UNDERGROUND STORM SEWER. SEE CIVIL DRAWINGS FOR FURTHER INFORMATION.
13. LED LIGHT FIXTURE. SEE ELECTRICAL DRAWINGS FOR FURTHER INFORMATION
14. 1x FIBER CEMENT TRIM - PAINT 'WHITE'
15. 'BLUE' FABRIC AWNING.
16. DASHED LINE DENOTES TOP OF ROOF BEYOND
17. EIFS DENTIL MOLDING - PAINT 'WHITE'
18. ARCHITECTURAL PRECAST CONCRETE COLUMN CAP
19. 8x8 WOOD COLUMN, STAINED. SEE STRUCTURAL FOR FURTHER INFORMATION
20. 4x12 WOOD BEAM, STAINED.
21. 12" FIBER CEMENT TRIM - PAINT "BLUE"
22. WALL MOUNTED ELECTRICAL CABINET - PAINT TO MATCH 'DARK BRONZE'
23. 5" HIGH, ADDRESS IDENTIFICATION CONTRASTING WITH BACKGROUND.
24. 1'-0" HIGH x 2'-0" WIDE SCUPPER OPENING
25. WOODEN TRASH ENCLOSURE GATE AND POST ASSEMBLY/A 305
26. ROOFTOP SCREENING BEYOND - SEE ROOF PLAN AND
27. FIRE DEPARTMENT LOCK BOX. MODEL R3-RECESSED BY THE DAMA COMPANY. VERIFY LOCATION WITH LOCAL FIRE OFFICIAL
28. PREFINISHED METAL OVERFLOW SCUPPER - 'DARK BRONZE'. SET BASE OF SCUPPER 3" HIGHER THAN BASE OF ADJACENT METAL SCUPPER.

Owner
New Horizon Academy
3405 Annapolis Lane N.
Suite 100
Plymouth, Minnesota 55447
763.557.1111

Architect
Short Elliott Hendrickson, Inc.
2000 S. Colorado Blvd., Suite 6000
Denver, Colorado 80222
720.540.6800

Landscape Architect
Short Elliott Hendrickson, Inc.
3535 Vadnais Center Drive
Suite 300
Minnetonka, Minnesota 55343
952.912.2600

Civil Engineer
Short Elliott Hendrickson, Inc.
2000 S. Colorado Blvd., Suite 6000
Denver, Colorado 80222
720.540.6800

Structural Engineer
Short Elliott Hendrickson, Inc.
2000 S. Colorado Blvd.
Suite 6000
Denver, CO 80222
303.586.5830

Mechanical Engineer
Short Elliott Hendrickson, Inc.
3535 Vadnais Center Drive
St. Paul, Minnesota 55110
651.318.0362

Electrical Engineer
Short Elliott Hendrickson, Inc.
3535 Vadnais Center Drive
St. Paul, Minnesota 55110
651.490.2166

NEW HORIZON ACADEMY
12188 SILVERCROO DRIVE
PARKER, CO 80134

This drawing is an instrument of service and shall remain the property of Short Elliott Hendrickson, Inc. (SEH). This drawing and the concepts and ideas contained herein shall not be used, reproduced, revised, or retained without the express written approval of SEH.

Submission or distribution of this drawing for use for other purposes in connection with the project is not to be construed as publication in derogation of any of the rights of SEH.

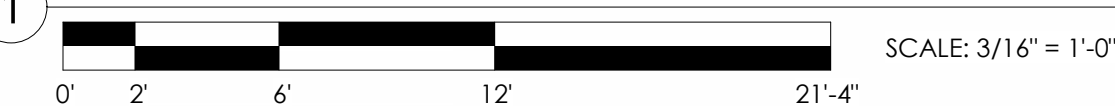
Copyright © 2021
Short Elliott Hendrickson, Inc.
All Rights Reserved.

SEH Project	NHAC 156217	
Checked By	SB	
Drawn By	DRS	
Project Status	Issue Date	
Revision Issue		
Rev. #	Description	Date
2	City Comments	01/15/2021

PRELIMINARY EXTERIOR ELEVATIONS



1 EAST ELEVATION



2 SOUTH ELEVATION



EXTERIOR FINISH SCHEDULE

MATERIAL	PRODUCT
STONE VENEER	SOUTHERN LEDGESTONE, 'CHARDONNAY', BY CULTURED STONE
FIBER CEMENT SHAKE SIDING	HARDIESHINGLE, STRAIGHT EDGE PANEL, 'COBBLESTONE', BY JAMES HARDIE
FIBER CEMENT HORIZONTAL SIDING	HARDIEPLANK, SMOOTH, 'COBBLESTONE', BY JAMES HARDIE
FIBER CEMENT BOARD AND BATTEN SIDING	HARDIEPANEL VERTICAL SIDING, SMOOTH, 'COBBLESTONE', WITH HARDIETRIM BOARD, SMOOTH BATTEN BOARD, 'COBBLESTONE' BY JAMES HARDIE
COMPOSITE WOOD TRIM	PAINT 'BLUE'
COMPOSITE WOOD TRIM	PAINT TO MATCH 'ARTIC WHITE' BY JAMES HARDIE
ARCHITECTURAL PRECAST CONCRETE	INDIANA LNESTONE
ALUMINUM STOREFRONT FRAMING	'DARK BRONZE' ANODIZED
FABRIC AWNING	'BLUE' BY SUNBRELLA

FACADE TRANSPARENCY SCHEDULE

FACADE	TOTAL S.F. OF FACADE	TRANSPARENCY REQUIRED	TRANSPARENCY PROVIDED
NORTH ELEVATION (BUILDING FRONT LESS THAN 100' IN LENGTH)	704 S.F.	40% (282 S.F.)	60% (423 S.F.)
SOUTH ELEVATION (BUILDING REAR LESS THAN 100' IN LENGTH)	712 S.F.	25% (178 S.F.)	44% (311 S.F.)
EAST ELEVATION (BUILDING SIDE MORE THAN 100' IN LENGTH)	1,178 S.F.	25% (295 S.F.)	50% (587 S.F.)
WEST ELEVATION (BUILDING FRONT MORE THAN 100' IN LENGTH)	1,179 S.F.	30% (354 S.F.)	58% (689 S.F.)

ELEVATION KEY NOTES (#)

- STONE - COUNTRY LEDGESTONE 'CHARDONNAY' BY CULTURED STONE
- FIBER CEMENT SHAKE SIDING - HARDIESHINGLE - STRAIGHT EDGE PANEL 'COBBLESTONE' BY JAMES HARDIE
- FIBER CEMENT HORIZONTAL SIDING - HARDIEPLANK - SMOOTH - 'COBBLESTONE' BY JAMES HARDIE
- FIBER CEMENT BOARD AND BATTEN SIDING - HARDIEPANEL 'VERTICAL SIDING - SMOOTH - 'COBBLESTONE' WITH HARDIETRIM BOARD - SMOOTH BATTEN BOARD - 'COBBLESTONE' BY JAMES HARDIE
- PREFINISHED METAL COPING - 'WHITE'
- ALUMINUM STOREFRONT FRAMING / GLAZING ASSEMBLY - INSULATED LOW-E GLASS WITH 'DARK BRONZE' ANODIZED ALUMINUM FRAMES
- ALUMINUM DOOR / TRANSOM / GLAZING ASSEMBLY - INSULATED LOW-E GLASS WITH 'DARK BRONZE' ANODIZED ALUMINUM FRAMES
- HOLLOW METAL DOOR AND FRAME - PAINT TO MATCH 'DARK BRONZE'
- ARCHITECTURAL PRECAST CONCRETE SILL
- 14'-3" x 3'-7" EXTERIOR LED 'NEW HORIZON ACADEMY' AND 'SUN' SIGNAGE. SEE ELECTRICAL DRAWINGS FOR FURTHER INFORMATION.
- EIFS CORNICE - PAINT 'WHITE'
- PREFINISHED METAL SCUPPER AND 4"x6" DOWNSPOUT - 'DARK BRONZE'. CONNECT DOWNSPOUT TO UNDERGROUND STORM SEWER. SEE CIVIL DRAWINGS FOR FURTHER INFORMATION.
- LED LIGHT FIXTURE. SEE ELECTRICAL DRAWINGS FOR FURTHER INFORMATION
- 1x FIBER CEMENT TRIM - PAINT 'WHITE'
- 'BLUE' FABRIC AWNING.
- DASHED LINE DENOTES TOP OF ROOF BEYOND
- EIFS DENTIL MOLDING - PAINT 'WHITE'
- ARCHITECTURAL PRECAST CONCRETE COLUMN CAP
- 8x8 WOOD COLUMN, STAINED. SEE STRUCTURAL FOR FURTHER INFORMATION
- 4x12 WOOD BEAM, STAINED.
- 12" FIBER CEMENT TRIM - PAINT 'BLUE'
- WALL MOUNTED ELECTRICAL CABINET - PAINT TO MATCH 'DARK BRONZE'
- 5" HIGH, ADDRESS IDENTIFICATION CONTRASTING WITH BACKGROUND.
- 1'-0" HIGH x 2'-0" WIDE SCUPPER OPENING
- WOODEN TRASH ENCLOSURE GATE AND POST ASSEMBLY/A 305
- ROOFTOP SCREENING BEYOND - SEE ROOF PLAN AND
- FIRE DEPARTMENT LOCK BOX. MODEL R3-RECESSED BY THE DAMA COMPANY. VERIFY LOCATION WITH LOCAL FIRE OFFICIAL
- PREFINISHED METAL OVERFLOW SCUPPER - 'DARK BRONZE'. SET BASE OF SCUPPER 3" HIGHER THAN BASE OF ADJACENT METAL SCUPPER.

Owner
New Horizon Academy
3405 Annapolis Lane N.
Suite 100
Plymouth, Minnesota 55447
763.557.1111

Architect
Short Elliott Hendrickson, Inc.
2000 S. Colorado Blvd., Suite 6000
Denver, Colorado 80222
720.540.6800

Landscape Architect
Short Elliott Hendrickson, Inc.
3535 Vadnais Center Drive
Suite 300
Minnetonka, Minnesota 55343
952.912.2600

Civil Engineer
Short Elliott Hendrickson, Inc.
2000 S. Colorado Blvd., Suite 6000
Denver, Colorado 80222
720.540.6800

Structural Engineer
Short Elliott Hendrickson, Inc.
2000 S. Colorado Blvd.
Suite 6000
Denver, CO 80222
303.586.5830

Mechanical Engineer
Short Elliott Hendrickson, Inc.
3535 Vadnais Center Drive
St. Paul, Minnesota 55110
651.318.0362

Electrical Engineer
Short Elliott Hendrickson, Inc.
3535 Vadnais Center Drive
St. Paul, Minnesota 55110
651.490.2166

NEW HORIZON ACADEMY

12188 SILVERCROO DRIVE
PARKER, CO 80134

This drawing is an instrument of service and shall remain the property of Short Elliott Hendrickson, Inc. (SEH). This drawing and the concepts and ideas contained herein shall not be used, reproduced, revised, or retained without the express written approval of SEH.

Submission or distribution of this drawing to meet official or regulatory requirements or for other purposes in connection with the project is not to be construed as publication or derogation of any of the rights of SEH.

SEH Project: NHAC 156217
Checked By: SB
Drawn By: DRS

Project Status: Issue Date: ...

Rev. #	Description	Date
2	City Comments	01/15/2021

PRELIMINARY EXTERIOR ELEVATIONS



1 WEST ELEVATION
3/16" = 1'-0"



2 NORTH ELEVATION
3/16" = 1'-0"



3 EAST ELEVATION
3/16" = 1'-0"



4 SOUTH ELEVATION
3/16" = 1'-0"

Owner
New Horizon Academy
3405 Annapolis Lane N.
Suite 100
Plymouth, Minnesota 55447
763.557.1111

Architect
Short Elliott Hendrickson, Inc.
2000 S. Colorado Blvd., Suite 6000
Denver, Colorado 80222
720.540.6800

Landscape Architect
Short Elliott Hendrickson, Inc.
3535 Vadnais Center Drive
Suite 300
Minnetonka, Minnesota 55343
952.912.2600

Civil Engineer
Short Elliott Hendrickson, Inc.
2000 S. Colorado Blvd., Suite 6000
Denver, Colorado 80222
720.540.6800

Structural Engineer
Short Elliott Hendrickson, Inc.
2000 S. Colorado Blvd.
Suite 6000
Denver, CO 80222
303.586.5830

Mechanical Engineer
Short Elliott Hendrickson, Inc.
3535 Vadnais Center Drive
St. Paul, Minnesota 55110
651.318.0362

Electrical Engineer
Short Elliott Hendrickson, Inc.
3535 Vadnais Center Drive
St. Paul, Minnesota 55110
651.490.2166

NEW HORIZON ACADEMY

12188 SUCERO DRIVE
PARKER, CO 80134

This drawing is an instrument of service and shall remain the property of Short Elliott Hendrickson, Inc. (SEH). This drawing and the concepts and ideas contained herein shall not be used, reproduced, revised, or retained without the express written approval of SEH.

Submission or distribution of this drawing for use for other purposes in connection with the project is not to be construed as publication in derogation of any of the rights of SEH.

Copyright © 2021
Short Elliott Hendrickson, Inc.
All Rights Reserved.

SEH Project: NHAC 156217
Checked By: SB
Drawn By: DRS

Project Status: _____ Issue Date: _____

Rev. #	Description	Date

PRELIMINARY ELEVATIONS