

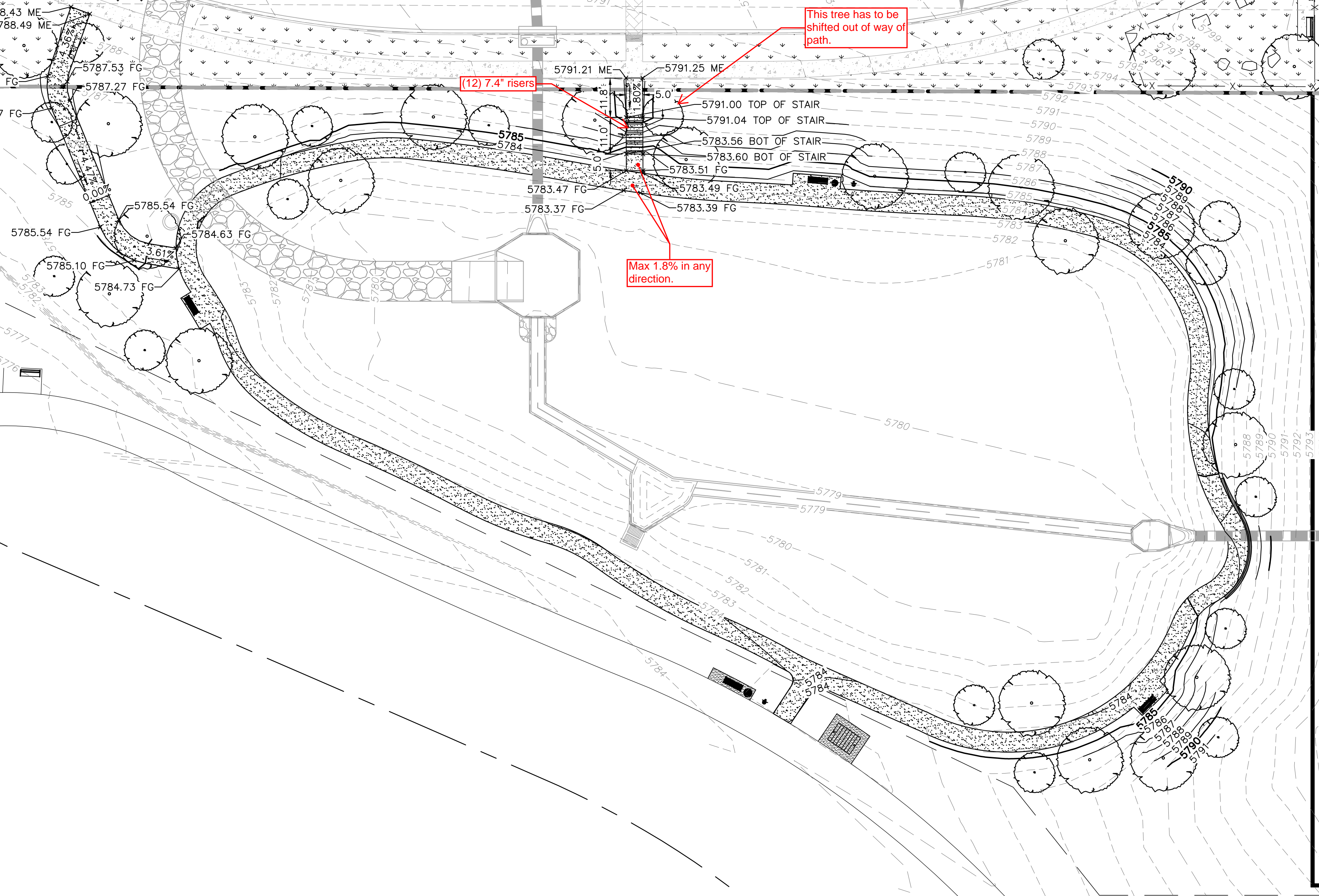
FOR ROAD IDENTIFIED
(BK 546-PG.540)


30' UTILITY EASEMENT
(REC. NO. 2003018241)

This tree has to be shifted out of way of path.

(12) 7.4' risers

Max 1.8% in any direction.



 **PARKER**
COLORADO

Final Document
Subject To Conditions In Approval Letter

APPROVED DATE: 03/14/2024

Planning Approval By: S. Nerger

