



1 SOUTH ELEVATION
SCALE: 3/16" = 1'-0"

NOTE:
SIGNAGE SHOWN IS FOR ILLUSTRATION
PURPOSES ONLY AND REQUIRES SEPARATE SIGN
PERMIT REVIEW / APPROVAL

MATERIAL LEGEND

	BRICK: "ONYX" GRAIN, BY SUMMIT BRICK		ALUMINUM CANOPY COLOR: WHITE
	STONE: TELLURIDE STONE SAHN THIN VENEER, HERITAGE BILTMORE DIMENSIONAL		GOLD UNDERSCORE
	ALUMINUM BATTEN SYSTEM: MFR: B+N INDUSTRIES SIZE: 2"x2" PROFILE COLOR: WOOD GRAIN		EXTERIOR WINDOW ASSEMBLY COLOR: EXTRA DARK BRONZE
	ALPOLIC METAL PANEL - COLOR: RAL TO22		HOLLOW METAL DOORS: PAINT: GAUNTLET GRAY" SH-T01T BY SHERWIN WILLIAMS



2 EAST ELEVATION
SCALE: 3/16" = 1'-0"

© COPYRIGHT
These drawings and specifications are the confidential and
proprietary property of McDonald's USA, LLC and shall not
be copied or reproduced without written authorization. The
contract documents were prepared for use on this specific
site in conjunction with its issue date and are not suitable
for use on a different site or at a later time. Use of these
drawings for reference or example on another project
requires the services of properly licensed architects and
engineers. Reproduction of the contract documents for
reuse on another project is not authorized.

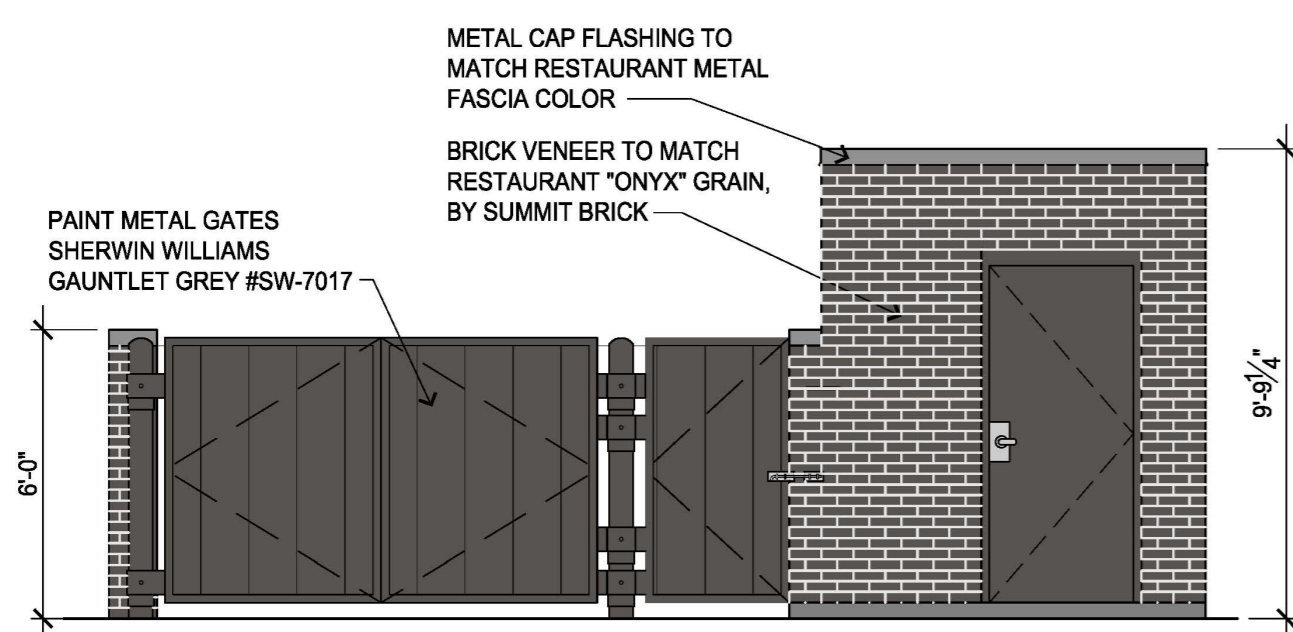
PREPARED FOR:
McDonald's
STORE #005-0162
10950 S. PARKER ROAD
PARKER, COLORADO

McDonald's Corporation
110 N. Carpenter St.
Chicago, IL 60607

ISSUE DATE

PROJECT #: 0826
DRAWN BY: CS
CHECK BY:
SHEET TITLE:
**EXTERIOR
ELEVATIONS**

DRAWING NO:
A3.01

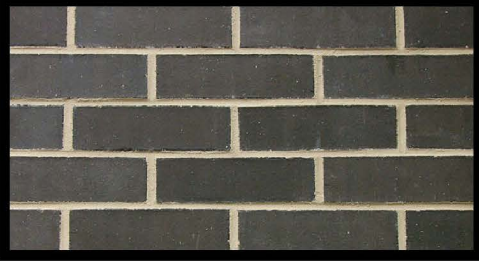


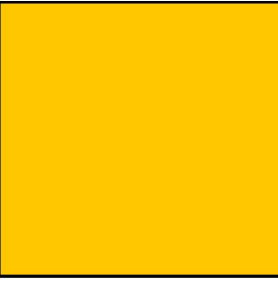

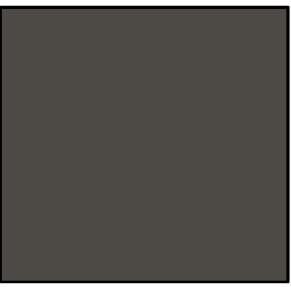
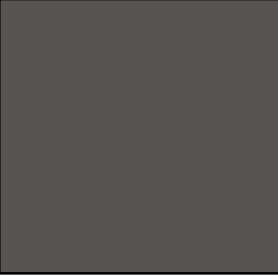


3 TRASH ENCLOSURE ELEVATIONS
SCALE: 1/4" = 1'-0"



1 NORTH ELEVATION
SCALE: 3/16" = 1'-0"

MATERIAL LEGEND

	BRICK, "ONYX" GRAIN, BY SUMMIT BRICK		ALUMINUM CANOPY COLOR: WHITE
	STONE: TELLURIDE STONE SAHN THIN VENEER, HERITAGE BILTMORE DIMENSIONAL		GOLD UNDERSCORE
	ALUMINUM BATTEN SYSTEM: FER: B+N INDUSTRIES SIZE: 2"x2" PROFILE COLOR: WOOD GRAIN		EXTERIOR WINDOW ASSEMBLY COLOR: EXTRA DARK BRONZE
	ALPOLIC METAL PANEL: COLOR: RAL 7022		HOLLOW METAL DOORS: PAINT: "GAUNTLET GRAY" SH-T011 BY SHERWIN WILLIAMS

NOTE: SIGNAGE SHOWN IS FOR ILLUSTRATION PURPOSES ONLY AND REQUIRES SEPARATE SIGN PERMIT REVIEW / APPROVAL



2 WEST ELEVATION
SCALE: 3/16" = 1'-0"



Arria Architecture, LLC
285 Commander Dr.
Erie, CO 80516

970.988.6302
corey.stinar@arrisinc.net

© COPYRIGHT
These drawings and specifications are the confidential and proprietary property of McDonald's USA, LLC and shall not be copied or reproduced without written authorization. The contract documents were prepared for use on this specific site in conjunction with its issue date and are not suitable for use on a different site or at a later time. Use of these drawings for reference or example on another project requires the services of properly licensed architects and engineers. Reproduction of the contract documents for reuse on another project is not authorized.

PREPARED FOR:
McDonald's
STORE #005-0162
10950 S. PARKER ROAD
PARKER, COLORADO

McDonald's Corporation
110 N. Carpenter St.
Chicago, IL 60607

ISSUE	DATE

PROJECT #: 0826
DRAWN BY: CS
CHECK BY:
SHEET TITLE:
EXTERIOR ELEVATIONS

DRAWING NO:
A3.02