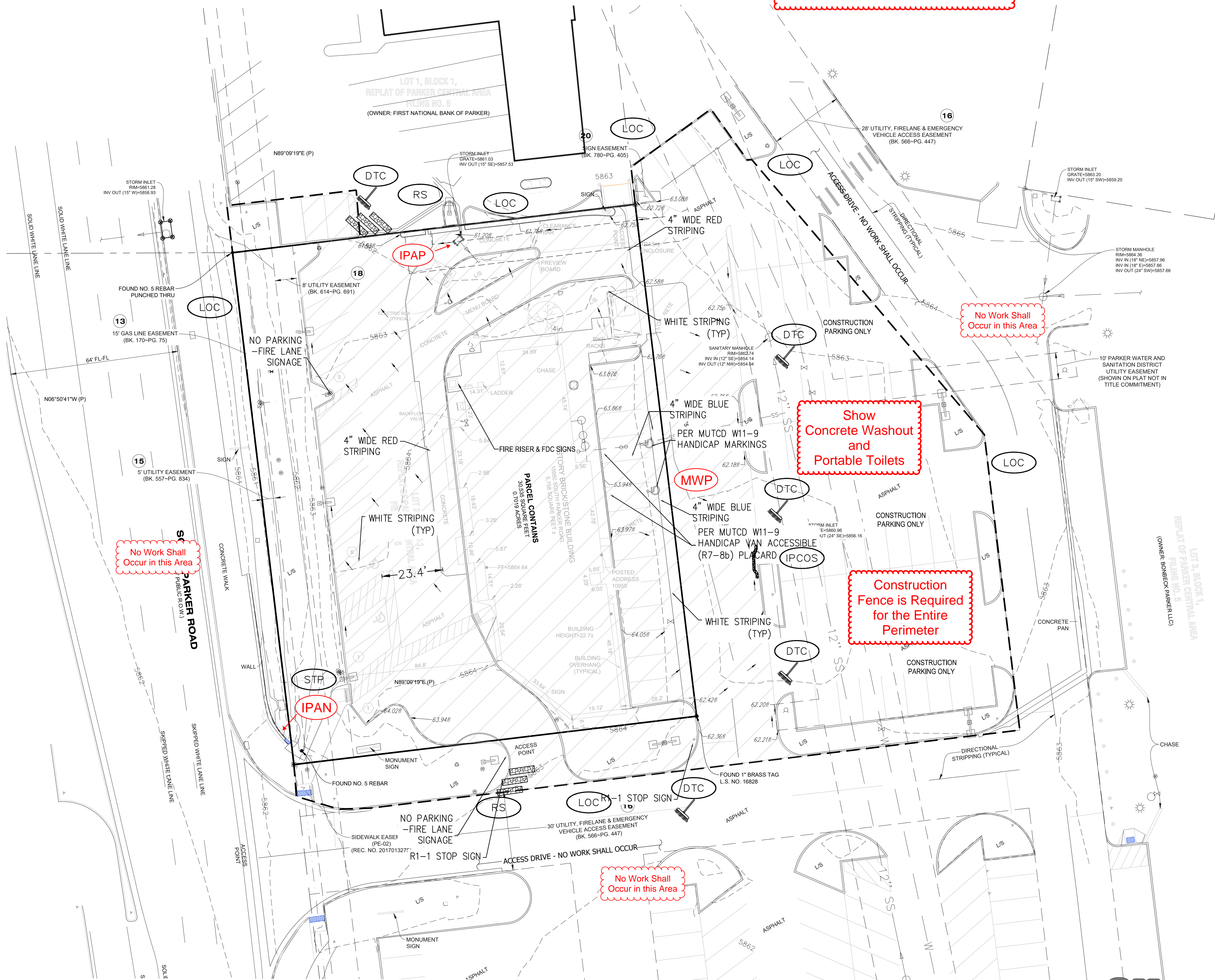


MCDONALD'S REMODEL AT PARKER CENTRAL AREA FILING NO. 5, BLOCK 1, LOT 2 CONSTRUCTION PLANS

EROSION & SEDIMENT CONTROL LEGEND

	CD	CHECK DAM
	CF	CONSTRUCTION FENCE
	CP	CULVERT PROTECTION
	CWA	CONCRETE WASHOUT AREA
	D	DEWATERING
	DD	DIVERSION DITCH
	DTC	DEBRIS TRASH CONTROL
	ECB	EROSION CONTROL BLANKET
	IPAN	INLET PROTECTION FOR AREA INLETS NOT IN PAVEMENT
	IPAP	INLET PROTECTION FOR AREA INLETS IN PAVEMENT
	IPCOG	INLET PROTECTION, CURB ON-GRADE, TYPE R INLET
	IPCOS	INLET PROTECTION, CURB ON SUMP, TYPE R INLET
	LP	LOT PROTECTION
	MWP	MASONRY WORK PROTECTION
	PTP	PORTABLE TOILET PROTECTION
	RCSC	ROUGH CUT STREET CONTROL
	RS	ROCK SOCK
	RSS	ROCK SOCK IN SWALE
	SB	STRAW BALE
	SCL	SEDIMENT CONTROL LOGS
	SF	SILT FENCE
	SMC	SEEDING, MULCHING AND CRIMPING
	SR	SURFACE ROUGHING
	SSA	STABILIZED STAGING AREA
	STP	SIDEWALK TRANSITION PROTECTION
	TI	TEMPORARY IRRIGATION
	TSB	TEMPORARY SEDIMENT BASIN
	VTC	VEHICLE TRACKING CONTROL
	LOC	LIMITS OF CONSTRUCTION



Total Disturbance Area = 0.67 Acres

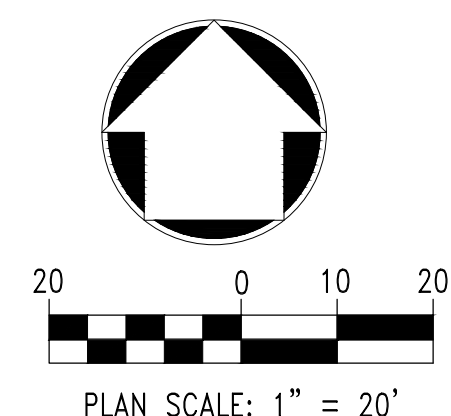
No Work Shall Occur in this Area

No Work Shall Occur in this Area

Show Concrete Washout and Portable Toilets

Construction Fence is Required for the Entire Perimeter

- NOTE:
- TEMPORARY IRRIGATION IS REQUIRED FOR ALL NATIVE SEED AREAS UNTIL VEGETATION IS ESTABLISHED. NATIVE SEED MAY TAKE 3-YEARS OR LONGER FOR ESTABLISHMENT.
 - TO REDUCE THE POTENTIAL FOR CLOGGING OF DEBRIS GRATES, NO STRAW MULCH SHALL BE USED WITHIN THE EXCESS URBAN RUNOFF VOLUME OF A DETENTION BASIN. INSTEAD, EROSION CONTROL BLANKET SHALL BE INSTALLED FOR A WIDTH OF AT LEAST 8 FEET ON BOTH SIDES OF THE CONCRETE LOW FLOW CHANNELS OR UP TO A DEPTH OF 1 FOOT IN SOIL RIPRAP OR BENCHED LOW FLOW CHANNELS. ADDITIONALLY, HYDRAULICALLY APPLIED WOOD FIBER MULCH, STABILIZED FIBER MATRIX, BONDED FIBER MATRIX, OR FLEXIBLE GROWTH MEDIUM SHALL BE USED IN ALL OTHER AREAS WITHIN THE EXCESS URBAN RUNOFF VOLUME OF THE DETENTION BASIN. THE BLANKET AND HYDRAULICALLY APPLIED MULCH SHALL COMPLY WITH THE MATERIALS AND INSTALLATION REQUIREMENTS FOR EROSION CONTROL BLANKETS AS REQUIRED BY THE TOWN'S CBMP PROGRAM, AND WHERE APPLICABLE, THE PRODUCT MANUFACTURER.
 - LOT PROTECTION (LP) IS REQUIRED ON ALL COMMERCIAL LOTS WHEN COMPLETION OF LANDSCAPING IS NOT POSSIBLE AND PRIOR TO ISSUANCE OF A CERTIFICATION OF OCCUPANCY.
 - ANY ONSITE BULK FUEL STORAGE REQUIRES A FIRE LIFE SAFETY PERMIT FROM THE TOWN OF PARKER PRIOR TO INSTALLATION.



The Town of Parker review constitutes general compliance with the town's Standards and approved variances, subject to these plans being stamped, signed, and dated by the professional engineer of record. Review by the Town does not constitute approval of the plan design or accuracy and correctness of engineering calculations. Errors in the design or calculations remain the responsibility of the registered professional engineer whose stamp and signature are affixed to this document.

This review does not constitute approval of any private on-site improvements which may be shown. Construction cannot commence until all required drainage/traffic report(s), final development plan(s), special review(s), grading permit, and/or other permits are complete, approved and on file with the Town of Parker.

Town of Parker, Director of Engineering/Public Works Date

NO. DATE REVISION DESCRIPTION

CIVIL ENGINEERING CONSULTANT

Strategic Land Solutions, Inc.
Civil Engineering & Land Planning Solutions
2595 PONDEROSA ROAD
FRANKTOWN, CO 80116
720.364.7661 Phone
rpalmer@strategicls.net
Robert J. Palmer, PE
President

PREPARED UNDER THE DIRECT SUPERVISION OF

SEAL: COLORADO REGISTERED PROFESSIONAL ENGINEER
ROBERT J. PALMER
36320

BY Robert J. Palmer, PE
Licensed Professional Engineer (CO PE #36320),
AS PRESIDENT FOR STRATEGIC LAND SOLUTIONS, INC.

McDonald's
THESE PLANS AND SPECIFICATIONS ARE THE PROPERTY OF MCDONALD'S CORPORATION AND SHALL NOT BE REPRODUCED WITHOUT THEIR WRITTEN PERMISSION.

OFFICE: ROCKY MOUNTAIN REGION
ADDRESS: 4643 S. ULLSTER STREET, SUITE 1300, DENVER, COLORADO 80237

10950 S. PARKER ROAD	CITY	PARKER
STATE	COLORADO	COUNTY
	DOUGLAS	
500162	STATE SOURCE I.D.#	500162
tbid	MARKING I.D.#	tbid

SCALE: AS NOTED	MD RE: BOWAN
DATE: 10/06/2023	MD P/CM: PEDIGO
DESIGNED BY: RJP	FILE NAME: CURRENT.DWG
DRAWN BY: RJP	S.I.S. NO. 14-001-47
CHECKED BY: RJP	
DRAWING TITLE: INITIAL CBMP	
SHEET NO: C6	

