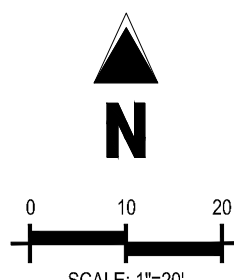


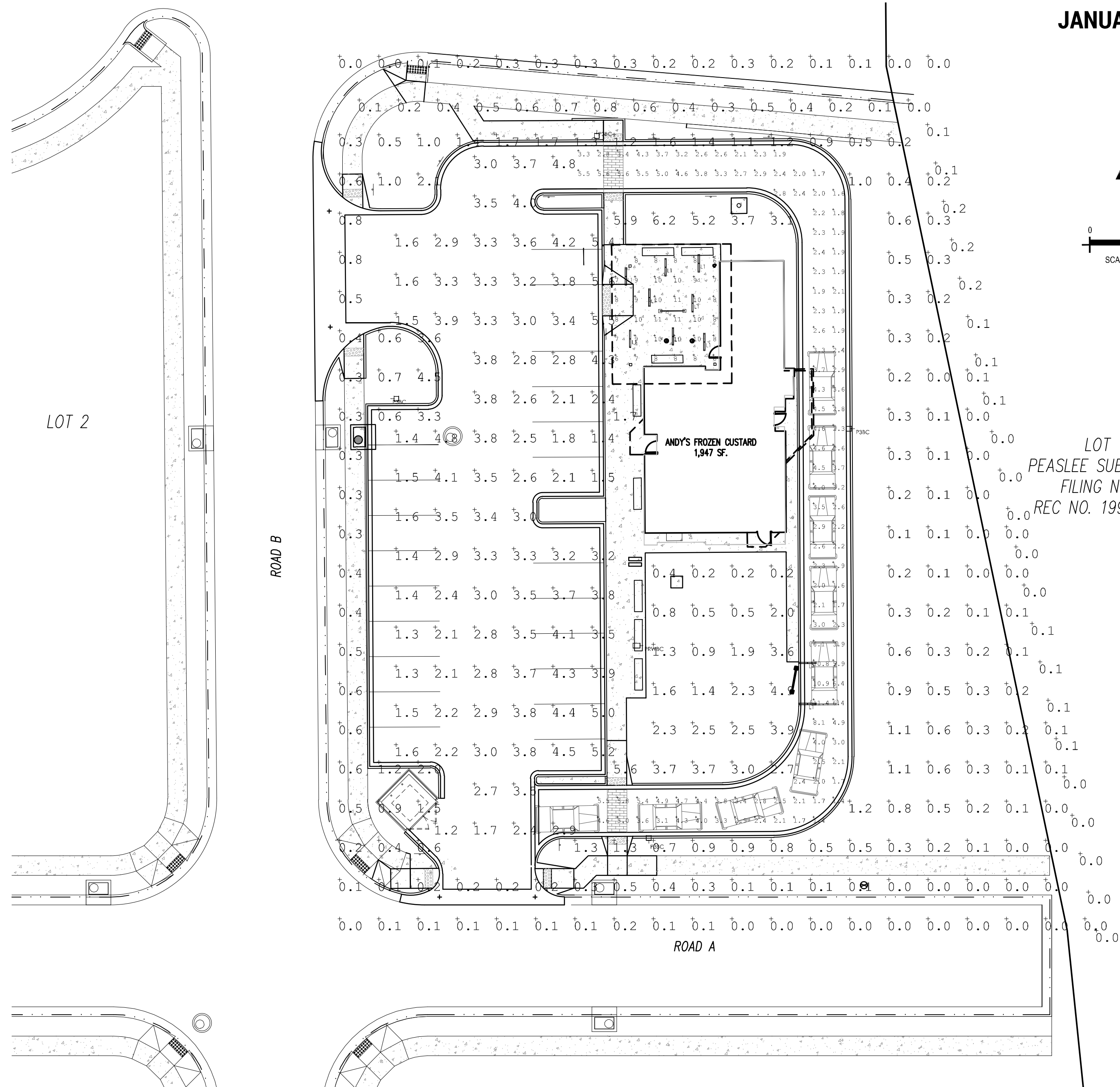
PLAZA STREET PARTNERS
LINCOLN PROFESSIONAL PARK FILING NO.1 LOT 3
 LOCATED IN THE NORTHWEST QUARTER OF SECTION 15, TOWNSHIP 6 SOUTH,
 RANGE 66 WEST OF THE 6TH PRINCIPAL MERIDIAN,
 CITY OF PARKER, COUNTY OF DOUGLAS, STATE OF COLORADO

SITE PLAN DOCUMENTS

JANUARY 2024



LOT 1
 PEASLEE SUBDIVISION
 FILING NO. 1
 REC NO. 199104313



Luminaire Schedule Symbol	Qty	Label	[MANUFAC]	Description	Luminaire Lumens	Luminaire Watts	LLF	MOUNTING HEIGHT	COLOR
	10	L1	WILLIAMS INDOOR	MX4IP-4-00-L7-840-F-(L6)-DIM-UNV	3296	25	0.675	NA	NA
	4	P3BC	U.S. ARCHITECTURAL LIGHTING	RZR-G-PLD-III-W-80LED-525MA-40K-HS	13604	129	0.900	20'	DARK BRONZE
	1	PRWBC	U.S. ARCHITECTURAL LIGHTING	RZR-G-PLD-IV-FT-80LED-525MA-40K-HS	13568	129	0.900	20'	DARK BRONZE

Calculation Summary							
Label	Calc-Type	Units	Avg	Max	Min	Avg/Min	Max/Min
Canopy_Surface	Illuminance	Fc	8.56	11	4	1.43	1.83
Drive_Surface	Illuminance	Fc	3.42	11.4	1.4	2.44	8.14
Parking_Surface	Illuminance	Fc	3.07	5.6	1.2	2.56	4.67
Property_Line_Surface	Illuminance	Fc	0.20	0.8	0.0	N.A.	N.A.
Site_Surface	Illuminance	Fc	0.77	6.2	0.0	N.A.	N.A.

Product in development. Information contained herein is subject to change. Valid for 30 days from date provided. Extended lead times apply. Expect 8-10 week lead time upon receipt of order.

MX4IP LED
4" Ambient - IP Rated

CATALOG # _____
 TYPE _____
 PROJECT _____

Surface Mounting Type Shown

FEATURES

QuickLock

- Ensure a simple and secure installation with QuickLock's surface mount technology
- Lens opens the entire fixture for clean aesthetic
- Welded aluminum enclosure provides for watertight service
- Custom designed one-piece gasket to prevent water intrusion
- Pressure equalization vent to eliminate vacuum that can draw in moisture
- Diffuse acrylic lens provides uniform illumination for visual comfort
- Made Right Here! in the USA

ORDERING EXAMPLE: MX4IP - 8 - L8/B35 - P - F - OPTIONS - DIM - UNV

SERIES	LENGTH	LUMENS™	CRI	CCT	MOUNTING TYPE	SHIELDING
MX4IP	Stand-alone - 2', 4', 6' & 8' nominal lengths. Fixture ships assembled. Example: 4'-4"	L4 400lm L7 700lm L8 900lm L15 1500lm	8 80 9 90	27 2700K 30 3000K 35 3500K 40 4000K 50 5000K	S Surface P Pendant	F Flat, diffuse acrylic

OPTIONS
 See page 3 for FINISH OPTIONS. Custom colors available upon request.

CONTROL
 DIM Dimming driver
 DRV Non-dimming driver

VOLTAGE
 120 120V
 277 277V
 UNV 120-277V

SPECIFICATIONS

- HOUSING - Extruded aluminum housing and end caps comprise welded enclosure.
- SHIELDING - Extruded, flat, diffuse acrylic lens.
- GASKETING - Continuous extruded silicone with molded corners.
- FINISH - Super durable polyester powder coat bonded to phosphate-free multi-stage anodized metal. Meets and exceeds AAMA 2604 specification for outdoor durability.
- ELECTRICAL - High quality mid-power LED boards. L70 >60,000 hours per IES TM-21. Temperature rated from -20°C - 40°C.
- MOUNTING - Surface or pendant.
- LISTINGS -
 - cULus certified as luminaire suitable for wet locations
 - IP65 rated
- WARRANTY - 5-year limited warranty, see www.williams.com

NOTES

- Lumens per foot output based on 3500K CCT and F shielding.
- Actual lumens may vary ± 5%.
- Extended lead times may apply. Consult factory for availability.

H.E. Williams, Inc. • Carthage, Missouri • www.hew.com • 417-358-4065 • Designed and Manufactured in the USA
 Information contained herein is subject to change without notice. REV:09/16/22, PRELIMINARY, A. Garage Page 1 of 3

Product in development. Information contained herein is subject to change. Valid for 30 days from date provided. Extended lead times apply. Expect 8-10 week lead time upon receipt of order.

MX4IP LED
4" Ambient - IP Rated

FIXTURE PERFORMANCE DATA

LENGTH	DELIVERED LUMENS	WATTAGE	EFFICACY (lm/w)
2'	895	7.6	107.4
4'	1631	16.1	101.3
6'	2447	23.3	105.0
8'	3292	29.6	110.2
10'	4159	37.8	109.7
12'	5039	47.0	107.2
14'	5932	57.2	103.7
16'	6839	68.4	101.3
18'	7759	80.6	96.1
20'	8692	93.8	92.7
22'	9639	108.0	89.3
24'	10600	123.2	86.0
26'	11575	139.4	83.0
28'	12564	156.6	80.2
30'	13567	174.8	77.6
32'	14584	194.0	75.2
34'	15615	214.2	72.9
36'	16660	235.4	70.6
38'	17719	257.6	68.4
40'	18792	280.8	66.2
42'	19879	305.0	64.2
44'	20980	330.2	62.3
46'	22095	356.4	60.6
48'	23224	383.6	59.0
50'	24367	411.8	57.5
52'	25524	441.0	56.1
54'	26695	471.2	54.8
56'	27880	502.4	53.6
58'	29079	534.6	52.5
60'	30292	567.8	51.6
62'	31509	602.0	50.7
64'	32740	637.2	49.9
66'	33985	673.4	49.1
68'	35244	710.6	48.3
70'	36507	748.8	47.6
72'	37784	788.0	46.9
74'	39075	828.2	46.3
76'	40380	869.4	45.7
78'	41699	911.6	45.2
80'	43032	954.8	44.7
82'	44379	999.0	44.2
84'	45740	1044.2	43.8
86'	47105	1090.4	43.4
88'	48484	1137.6	43.0
90'	49877	1185.8	42.6

MULTIPLIER TABLE

CCT	COLOR TEMPERATURE CONVERSION FACTOR	
	2700K	3000K
2700K	0.97	0.99
3000K	1.00	1.00
3500K	1.03	1.06
4000K	1.06	1.08
4500K	1.08	1.10
5000K	1.10	1.12

PHOTOMETRY

MX4IP-4-L15/B35-S-F-DIM-UNV Total Luminaire Output: 5990 Lumens; 53 Watts | Efficacy: 113 lm/W | 83 CRI; 3438K CCT

VERTICAL ANGLE	HORIZONTAL ANGLE			ZONAL LUMENS
	0°	45°	90°	
0°	2438	2438	2438	2438
5°	2448	2432	2405	229
10°	2458	2405	2307	865
15°	2468	2353	2323	1466
20°	2478	2285	2343	2094
25°	2488	2206	2363	2850
30°	2498	2117	2383	3723
35°	2508	2019	2403	4713
40°	2518	1912	2423	5818
45°	2528	1796	2443	7038
50°	2538	1671	2463	8373
55°	2548	1537	2483	9823
60°	2558	1403	2503	11388
65°	2568	1271	2523	13068
70°	2578	1141	2543	14863
75°	2588	1013	2563	16773
80°	2598	887	2583	18798
85°	2608	763	2603	20938
90°	2618	641	2623	23193

CROSS SECTIONS

PENDANT: 4" x 4" x 4.13"

SURFACE: 4" x 4" x 4.13"

H.E. Williams, Inc. • Carthage, Missouri • www.hew.com • 417-358-4065 • Designed and Manufactured in the USA
 Information contained herein is subject to change without notice. REV:09/16/22, PRELIMINARY, A. Garage Page 2 of 3

PRELIMINARY
 NOT FOR BIDDING
 NOT FOR CONSTRUCTION

COPYRIGHT
 THESE PLANS ARE AN INSTRUMENT OF SERVICE AND ARE THE PROPERTY OF GALLOWAY, AND MAY NOT BE DUPLICATED, DISCLOSED, OR REPRODUCED WITHOUT THE WRITTEN CONSENT OF GALLOWAY. COPYRIGHTS AND INFRINGEMENTS WILL BE ENFORCED AND PROSECUTED.



PLAZA STREET PARTNERS
 SITE PLAN DOCUMENTS

PARKER COLORADO

#	Date	Issue / Description	Init.
1	08/23/22	1ST SUBMITTAL	SMB
2	12/14/22	2ND SUBMITTAL	SMB
3	03/08/23	3RD SUBMITTAL	SMB
4			
5			
6			
7			
8			
9			
10			

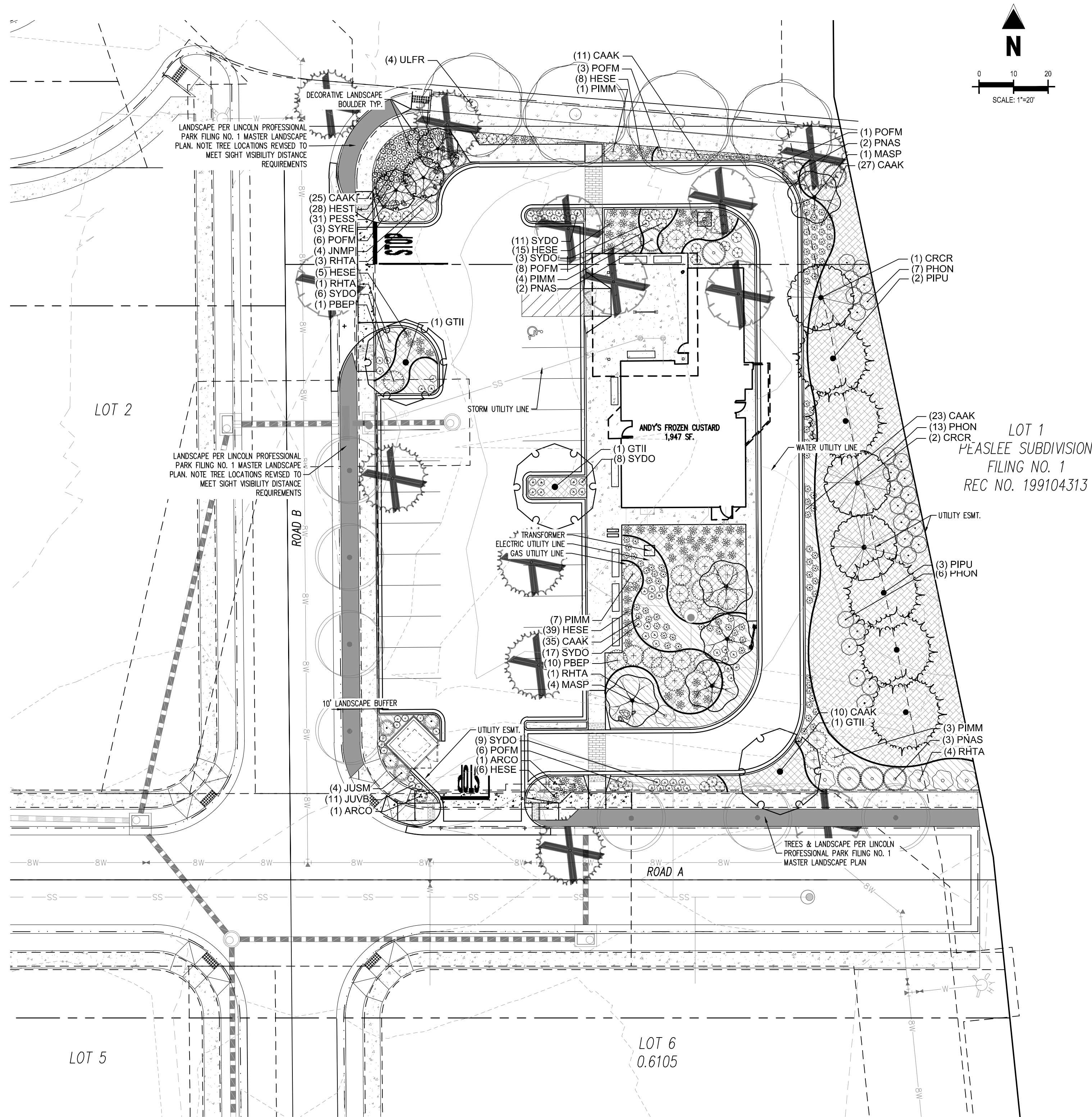
Project No: PSP000001
 Drawn By: JRC
 Checked By: SMB
 Date: 01/02/2024

PHOTOMETRIC CUT SHEETS

PLAZA STREET PARTNERS
LINCOLN PROFESSIONAL PARK FILING NO.1 LOT 3
 LOCATED IN THE NORTHWEST QUARTER OF SECTION 15, TOWNSHIP 6 SOUTH,
 RANGE 66 WEST OF THE 6TH PRINCIPAL MERIDIAN,
 CITY OF PARKER, COUNTY OF DOUGLAS, STATE OF COLORADO

SITE PLAN DOCUMENTS

MARCH 2023



PLANT SCHEDULE

DECIDUOUS TREES	CODE	QTY	COMMON NAME	BOTANICAL NAME	CONT.	CAL / SIZE	HT. X SPD.
	GTII	3	IMPERIAL HONEY LOCUST	GLEDITSIA TRIACANTHOS INERMIS 'IMPCOLE' TM	B&B	2" CAL	35' X25'
	ULFR	4	FRONTIER ELM	ULMUS X 'FRONTIER'	B&B	2" CAL	40' X30'
EVERGREEN TREES	CODE	QTY	COMMON NAME	BOTANICAL NAME	CONT.	CAL / SIZE	HT. X SPD.
	PIPU	5	COLORADO SPRUCE	PICEA PUNGENS	B&B	6" HT	60' X25'
	PNAS	7	ARNOLD SENTINEL AUSTRIAN PINE	PINUS NIGRA 'ARNOLD SENTINEL'	B&B	6" HT	25' X7'
ORNAMENTAL TREES	CODE	QTY	COMMON NAME	BOTANICAL NAME	CONT.	CAL / SIZE	HT. X SPD.
	CRCR	3	THORNLESS COCKSPUR HAWTHORN	CRATAEGUS CRUS-GALLI INERMIS	B&B	1.5" CAL	50' X20'
	MASP	5	SPRING SNOW CRABAPPLE	MALUS X 'SPRING SNOW'	B&B	1.5" CAL	20' X15'
	SYRE	3	JAPANESE TREE LILAC	SYRINGA RETICULATA	B&B	1.5" CAL	15' X12'
EXISTING TREES	CODE	QTY	COMMON NAME	BOTANICAL NAME	CONT.		
	EXTR	6	EXISTING DECIDUOUS TREE	TO BE REMOVED	EXISTING		
	EXER	7	EXISTING EVERGREEN TREE	TO BE REMOVED	EXISTING		
UPRIGHT JUNIPERS	CODE	QTY	COMMON NAME	BOTANICAL NAME	CONT.	HT. X SPD.	
	JUSM	4	MEDORA JUNIPER	JUNIPERUS SCOPULORUM 'MEDORA'	#5 CONT.	10' X5'	
	JUVB	11	BLUE ARROW EASTERN REDCEDAR	JUNIPERUS VIRGINIANA 'BLUE ARROW'	#5 CONT.	15' X2'	
DECIDUOUS SHRUBS	CODE	QTY	COMMON NAME	BOTANICAL NAME	CONT.	HT. X SPD.	
	PHON	26	DWARF NINEBARK	PHYSOCARPUS OPULIFOLIUS 'NANUS'	#5 CONT.	5' X5'	
	POFM	24	MCKAY'S WHITE BUSH CINQUEFOIL	POTENTILLA FRUTICOSA 'MCKAY'S WHITE'	#5 CONT.	2' X3'	
	PBEP	11	PAWNEE BUTTES SAND CHERRY	PRUNUS BESSEYI 'P011S' TM	#5 CONT.	1.5' X6'	
	RHTA	9	AUTUMN AMBER SUMAC	RHUS TRILOBATA 'AUTUMN AMBER'	#5 CONT.	1.5' X6'	
	SYDO	54	CANDY SNOWBERRY	SYMPHORICARPUS X DOORENBOSII 'KOLMCAN' TM	#5 CONT.	2' X2'	
EVERGREEN SHRUBS	CODE	QTY	COMMON NAME	BOTANICAL NAME	CONT.	HT. X SPD.	
	ARCO	2	MOCK BEARBERRY MANZANITA	ARCTOSTAPHYLOS X COLORADENSIS	#5 CONT.	8' X4'	
	JNMP	4	COMPACT PFITZER JUNIPER	JUNIPERUS X MEDIA 'PFITZERANA COMPACTA'	#5 CONT.	4' X5'	
	PIMM	15	MOPS MUGO PINE	PINUS MUGO 'MOPS'	#5 CONT.	5' X6'	
ORNAMENTAL GRASSES	CODE	QTY	COMMON NAME	BOTANICAL NAME	CONT.	HT. X SPD.	
	CAAK	131	KARL FOERSTER FEATHER REED GRASS	CALAMAGROSTIS X ACUTIFLORA 'KARL FOERSTER'	#1 CONT.	5' X2'	
	HESE	73	BLUE AVENA	HELICTOTRICHON SEMPERVIRENS	#1 CONT.	2.5' X2.5'	
PERENNIALS	CODE	QTY	COMMON NAME	BOTANICAL NAME	CONT.	HT. X SPD.	
	HEST	28	STELLA DE ORO DAYLILY	HEMEROCALLIS X 'STELLA DE ORO'	#1 CONT.	1.5' X1.5'	
	PESS	31	ROCKY MOUNTAIN PENSTEMON	PENSTEMON STRICTUS	#1 CONT.	2' X1.5'	
MULCH	CODE	QTY	COMMON NAME	BOTANICAL NAME			
	RMULCH2	3,509 SF	1.5" ROCK COBBLE MULCH	1.5" ROCK COBBLE MULCH			
	WMULCH	2,590 SF	WOOD MULCH	WOOD MULCH			
SOD/SEED	CODE	QTY	COMMON NAME	BOTANICAL NAME			
	SOD1	599 SF	RTF (RHIZOMATOUS TALL FESCUE)	FESCUE SOD			
	SEED1	4,714 SF	LOW GROW NATIVE SEED	LOW GROW NATIVE SEED			
	STEEL EDGING						



Know what's below.
Call before you dig.

CAUTION
 UTILITIES EXIST WITHIN CONSTRUCTION LIMITS. CONTRACTOR IS RESPONSIBLE FOR IDENTIFYING THEIR LOCATION PRIOR TO CONSTRUCTION.

LANDSCAPE ARCHITECT INFORMATION
 BRYNHILDR HALSTEN, PLA ASLA
 1155 KELLY JOHNSON BLVD., SUITE
 305, COLORADO SPRINGS, CO 80920
 BRYNHILDRHALSTEN@GALLOWAYUS.COM

PRELIMINARY
 NOT FOR BIDDING
 NOT FOR CONSTRUCTION

COPYRIGHT
 THESE PLANS ARE AN INSTRUMENT OF SERVICE AND ARE THE PROPERTY OF GALLOWAY, AND MAY NOT BE DUPLICATED, DISCLOSED, OR REPRODUCED WITHOUT THE WRITTEN CONSENT OF GALLOWAY. COPYRIGHTS AND INFRINGEMENTS WILL BE ENFORCED AND PROSECUTED.



PLAZA STREET PARTNERS
 SITE PLAN DOCUMENTS

PARKER COLORADO

#	Date	Issue / Description	Init.
1	08/23/22	1ST SUBMITTAL	SHB
2	12/14/22	2ND SUBMITTAL	SHB
3	03/09/23	3RD SUBMITTAL	SHB
4	01/02/24	SITE REVISIONS	BH

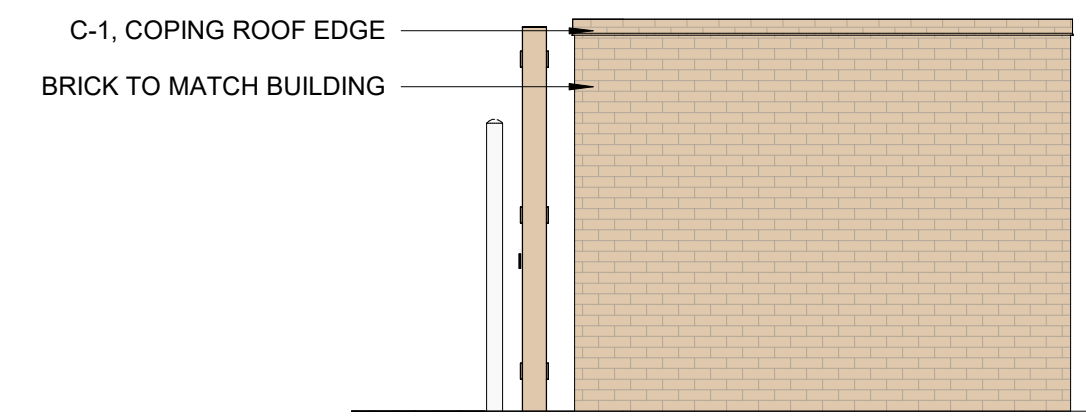
Project No: PSP000001
 Drawn By: BH
 Checked By: JR
 Date: 08/11/2022

LANDSCAPE PLAN

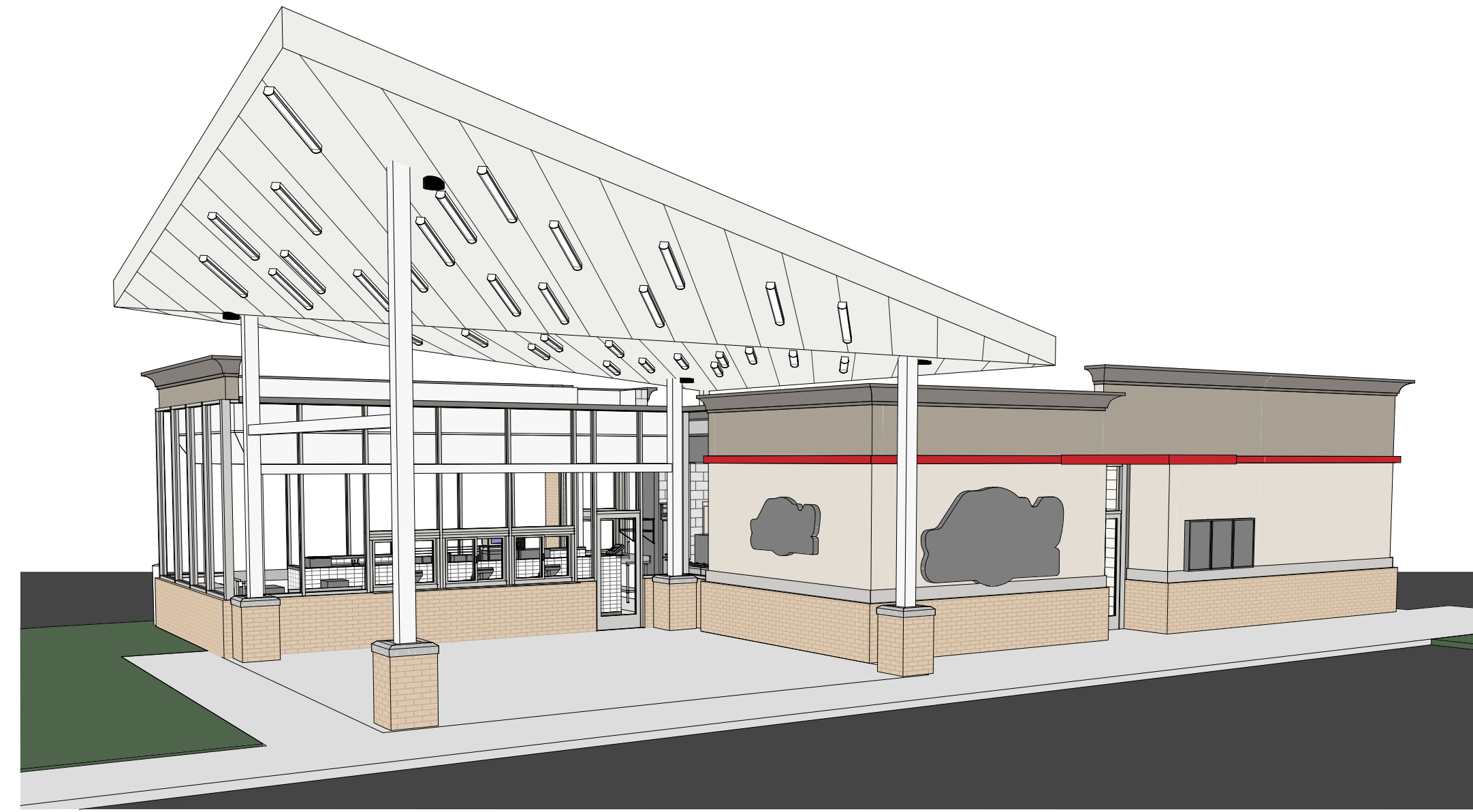
PLAZA STREET PARTNERS
LINCOLN PROFESSIONAL PARK FILING NO.1 LOT 3

LOCATED IN THE NORTHWEST QUARTER OF SECTION 15, TOWNSHIP 6 SOUTH,
 RANGE 66 WEST OF THE 6TH PRINCIPAL MERIDIAN,
 CITY OF PARKER, COUNTY OF DOUGLAS, STATE OF COLORADO

ARCHITECTURE CONSTRUCTION DRAWINGS
 MARCH 2023



3
 R002 **DUMPSTER ELEVATION - SIDE**
 1/4" = 1'-0"



4
 R002 **3D VIEW - 1**



BACK-LIT BANDING; REF TR-1 FOR COLORS
 NOTE: PHOTO IS INTENDED TO DISPLAY THE RED BANDING AND LIGHT SOURCE AND NOT REPRESENT THE BUILDING MATERIALS FOR THIS PROJECT LOCATION AS CHANGES MAY OCCUR AS REQ'D PER THE LOCAL AHJ.



SURFACE MOUNTED LED CANOPY LIGHT FIXTURE:
 NOTE: PHOTO IS INTENDED TO DISPLAY THE LIGHT FIXTURE AND NOT REPRESENT THE BUILDING MATERIALS FOR THIS PROJECT LOCATION AS CHANGES MAY OCCUR AS REQ'D PER THE LOCAL AHJ.

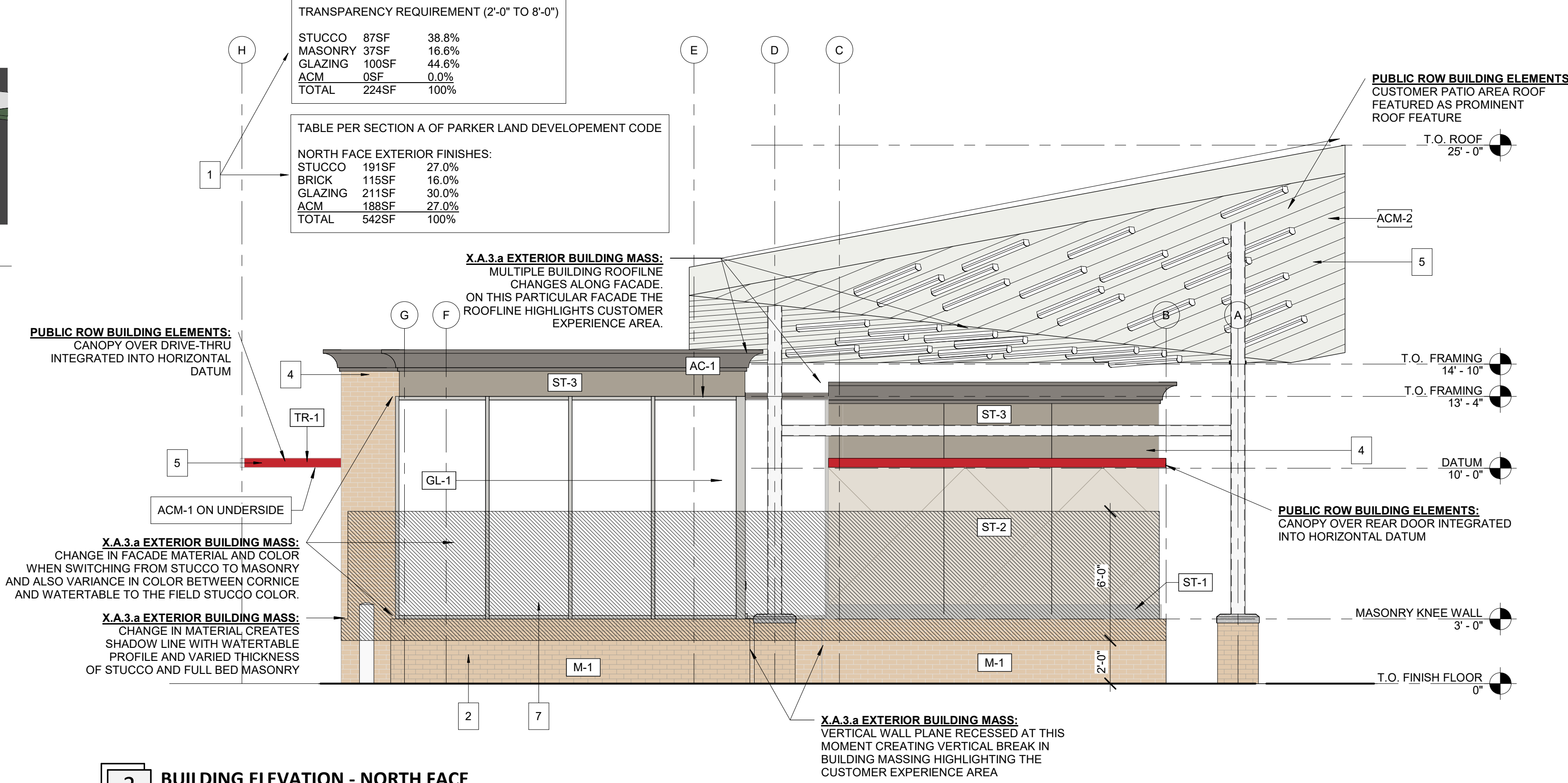
TRANSPARENCY REQUIREMENT (2'-0" TO 8'-0")

STUCCO	87SF	38.8%
MASONRY	37SF	16.6%
GLAZING	100SF	44.6%
ACM	0SF	0.0%
TOTAL	224SF	100%

TABLE PER SECTION A OF PARKER LAND DEVELOPEMENT CODE

NORTH FACE EXTERIOR FINISHES:

STUCCO	191SF	27.0%
BRICK	115SF	16.0%
GLAZING	211SF	30.0%
ACM	188SF	27.0%
TOTAL	542SF	100%

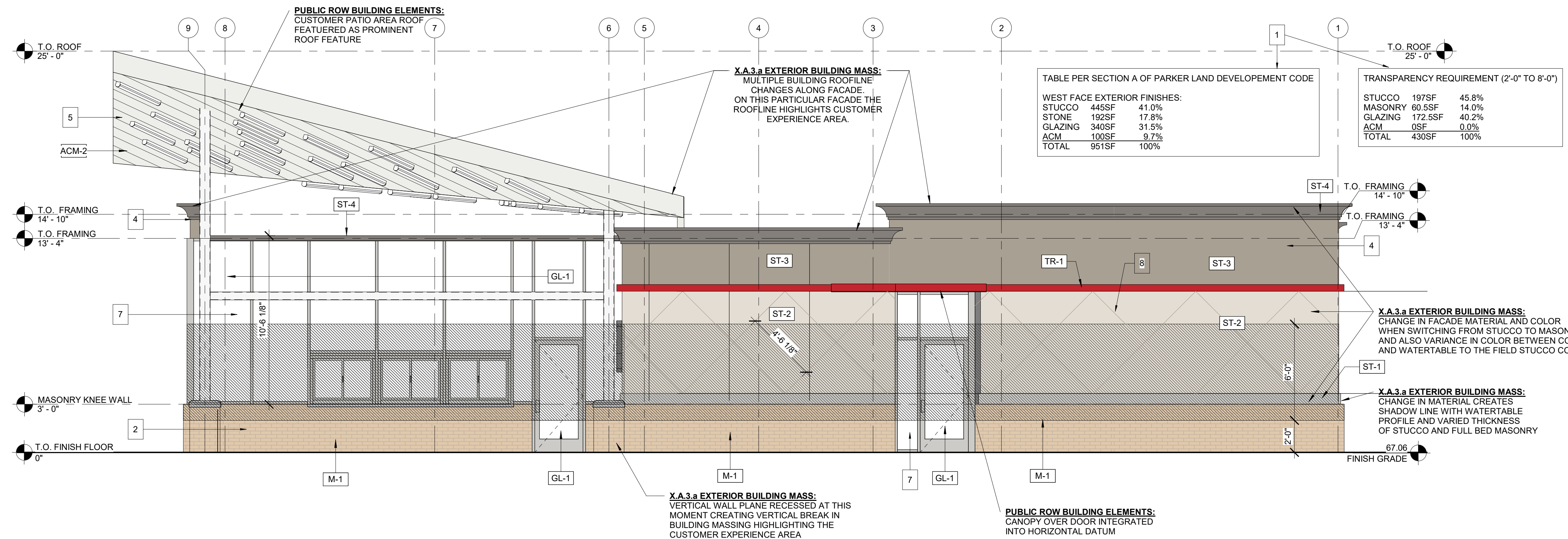


2
 R002 **BUILDING ELEVATION - NORTH FACE**
 1/4" = 1'-0"

EXTERIOR FINISH SCHEDULE

#	DESCRIPTION
ACM-1	COMPOSITE PANEL TYPE 1; COLOR: PVDF/KYNAR 500, BRITTE RED
ACM-2	COMPOSITE PANEL TYPE 2: PVDF/KYNAR 500, BONE WHITE.
GL-1	STOREFRONT TYPE 1: STOREFRONT, KAWNEER 451T. COLOR: CLEAR ANODIZED
M-1	MASONRY TYPE 1: SUMMIT MODULAR BRICK. COLOR: LIGHT PEWTER, GROUT COLOR: GRAY
N-1	PERIMETER FASCIA & NEON LIGHTING: BY SIGNAGE VENDOR. ANODIZED ALUM. FASCIA W/ NEON LIGHTING
ST-1	PAINTED STUCCO TO MATCH PT-3 (SW 2850 - CHELSEA GREY OR EQUIVALENT)
ST-2	PAINTED STUCCO TO MATCH PT-4 (SW 7035 - AESTHETIC WHITE)
ST-3	PAINTED STUCCO TO MATCH PT-5 (SW 7054 - INTELLECTUAL GRAY)
ST-4	PAINTED STUCCO TO MATCH PT-6 (SW 9554 - GOING GREY)
TR-1	BUILDING ACCENT TRIM: ALUM. BRAKE-METAL. COLOR: MATCH ACM-1 BRITTE RED

- ELEVATION KEYNOTES**
- SECTION A, 2-C-I OF PARKER LAND DEVELOPEMENT CODE MET. SEE MATERIAL AND GLAZING TABLE ON ELEVATIONS.
 - SECTION A, 3-A OF PARKER LAND DEVELOPEMENT CODE MET BY BREAKING MATERIALS HORIZONTALLY FROM BRICK TO STUCCO. SEE ELEVATIONS.
 - SECTION A, 3-C OF PARKER LAND DEVELOPEMENT CODE MET. PARAPETS PROVIDED CLEARLY ARTICULATE THE TOP OF THE BUILDING AS OF A 3-C-II. ROOF IS INTEGRAL TO THE MASSING OF THE BUILDING AS OF A 3-C-IV. USING ACCEPTED FLAT ROOF AS MENTIONED IN A, 3-C-V.
 - SECTION A, 3-D OF PARKER LAND DEVELOPEMENT CODE MET. PARAPETS HAVE BEEN BROKEN UP IN HEIGHT ON THE NORTH AND EAST SIDE OF BUILDING. SEE ELEVATIONS.
 - SECTION C, 1-A OF PARKER LAND DEVELOPEMENT CODE MET. TWO REQUIRED DESIGN ELEMENTS ARE THE WING CANOPY AND DRIVE-THRU AWNING
 - SECTION C, 2 OF PARKER LAND DEVELOPEMENT CODE DOES NOT APPLY. NO PUBLIC ENTRIES.
 - SECTION C, 3 OF PARKER LAND DEVELOPEMENT CODE MET. STOREFRONT ALONG BUILDING MEETS ALL REQUIREMENTS. STUCCO CONTROL JOINTS TO BE 1" IN THICKNESS, COLOR TO MATCH PT-5.



1
 R002 **BUILDING ELEVATION - WEST FACE (ROAD B)**
 1/4" = 1'-0"

NOT FOR CONSTRUCTION

REVISIONS

NO.	DATE	DESCRIPTION

PLAZA STREET PARTNERS
LINCOLN PROFESSIONAL PARK FILING NO.1 LOT 3

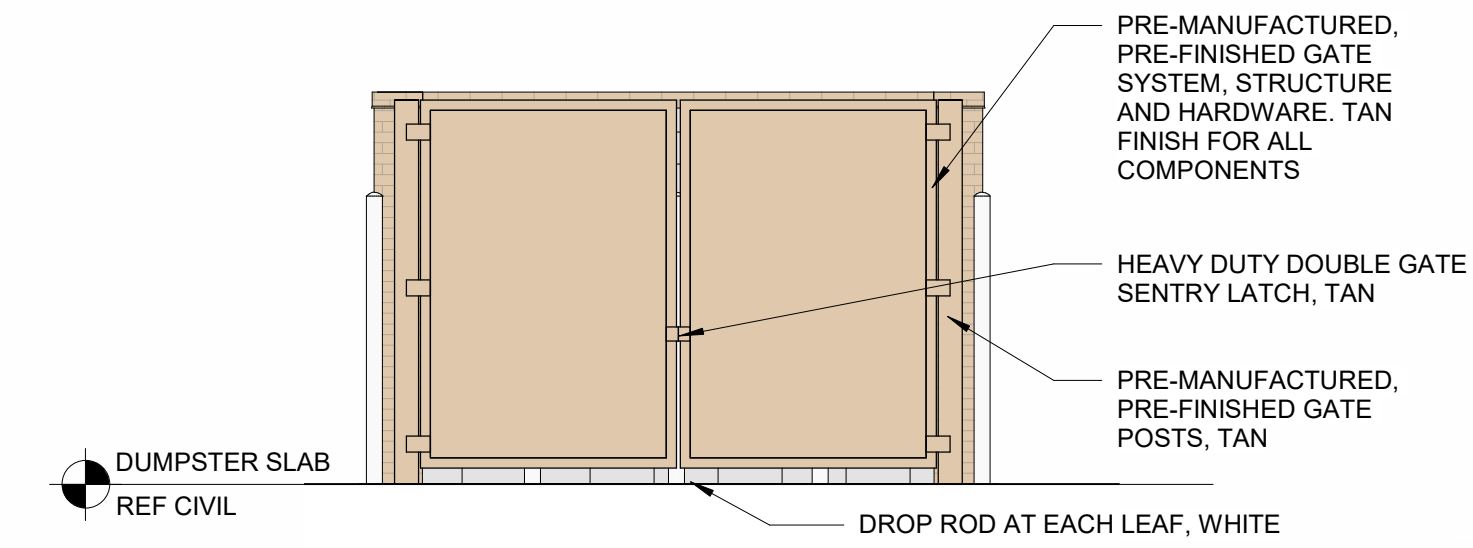
LOCATED IN THE NORTHWEST QUARTER OF SECTION 15, TOWNSHIP 6 SOUTH,
 RANGE 66 WEST OF THE 6TH PRINCIPAL MERIDIAN,
 CITY OF PARKER, COUNTY OF DOUGLAS, STATE OF COLORADO

CIVIL CONSTRUCTION DRAWINGS

MARCH 2023



4
 R003
3D VIEW - 2



3
 R003
DUMPSTER ELEVATION - GATES
 1/4" = 1'-0"

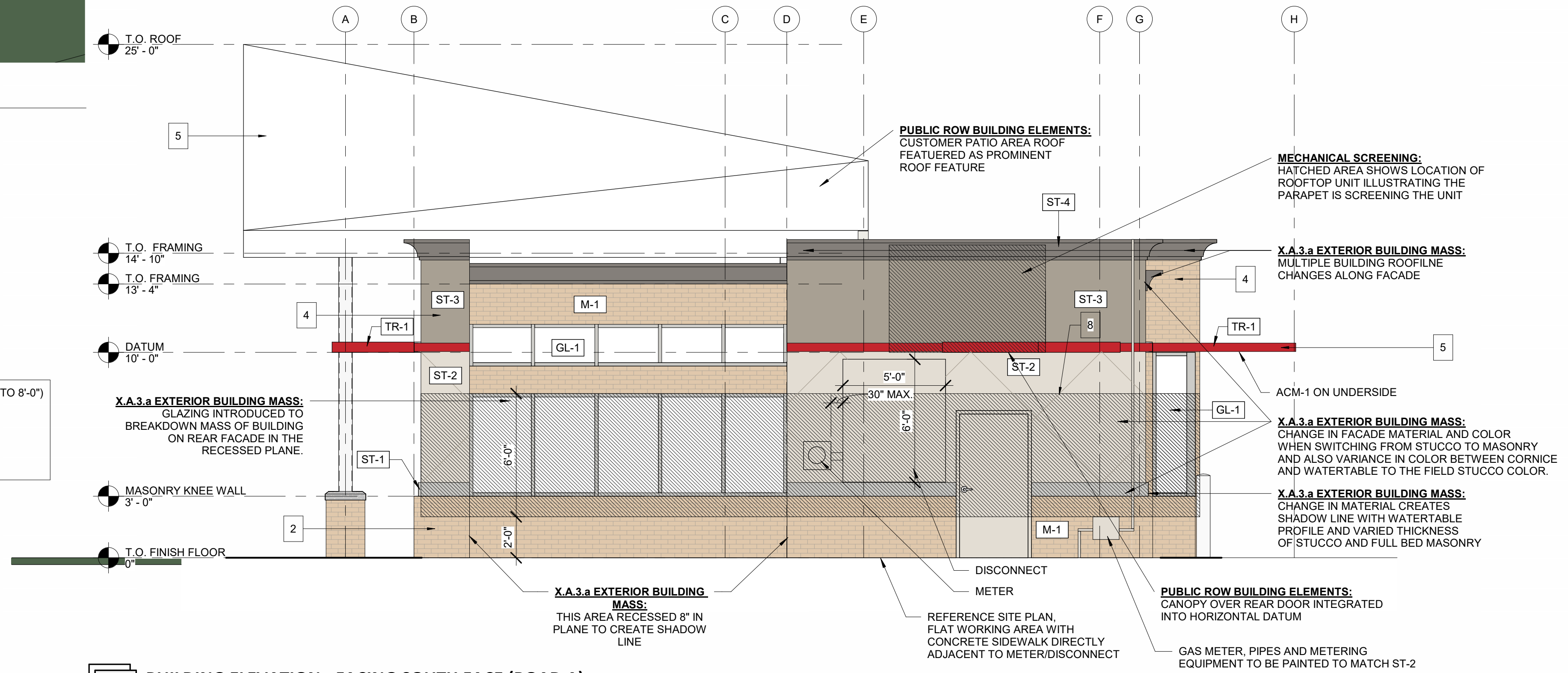
TABLE PER SECTION A OF PARKER LAND DEVELOPMENT CODE

SOUTH FACE EXTERIOR FINISHES:

STUCCO	288SF	60.0%
BRICK	104SF	21.0%
GLAZING	93SF	19.0%
TOTAL	485SF	100%

TRANSPARENCY REQUIREMENT (2'-0" TO 8'-0")

STUCCO	94SF	41.4%
MASONRY	38SF	16.8%
GLAZING	95SF	41.8%
ACM	0SF	0.0%
TOTAL	227SF	100%

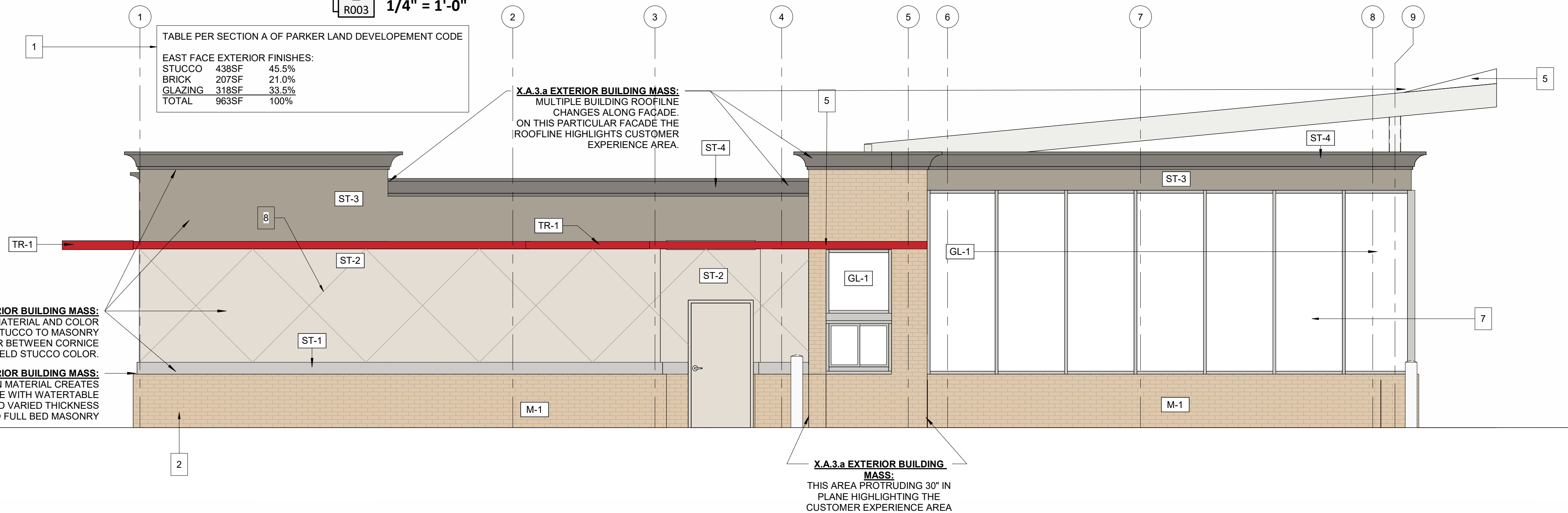


2
 R003
BUILDING ELEVATION - FACING SOUTH FACE (ROAD A)
 1/4" = 1'-0"

TABLE PER SECTION A OF PARKER LAND DEVELOPMENT CODE

EAST FACE EXTERIOR FINISHES:

STUCCO	438SF	45.5%
BRICK	207SF	21.0%
GLAZING	318SF	33.5%
TOTAL	963SF	100%



1
 R003
BUILDING ELEVATION - EAST FACE
 1/4" = 1'-0"

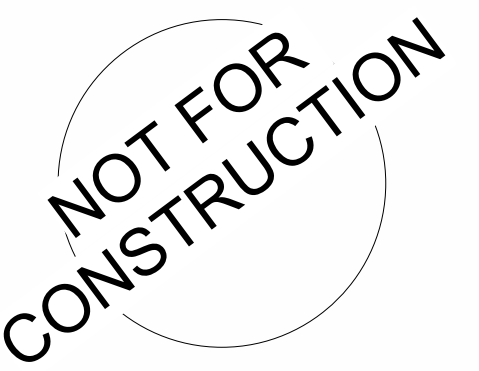
EXTERIOR FINISH SCHEDULE

#	DESCRIPTION
ACM-1	COMPOSITE PANEL TYPE 1; COLOR: PVDF/KYNAR 500, BRITE RED
ACM-2	COMPOSITE PANEL TYPE 2; PVDF/KYNAR 500, BONE WHITE.
GL-1	STOREFRONT TYPE 1; STOREFRONT, KAWNEER 451T. COLOR: CLEAR ANODIZED
M-1	MASONRY TYPE 1; SUMMIT MODULAR BRICK. COLOR: LIGHT PEWTER. GROUT COLOR: GRAY
N-1	PERIMETER FASCIA & NEON LIGHTING; BY SIGNAGE VENDOR. ANODIZED ALUM. FASCIA W/ NEON LIGHTING
ST-1	PAINTED STUCCO TO MATCH PT-3 (SW 2850 - CHELSEA GREY OR EQUIVALENT)
ST-2	PAINTED STUCCO TO MATCH PT-4 (SW 7035 - AESTHETIC WHITE)
ST-3	PAINTED STUCCO TO MATCH PT-5 (SW 7054 - INTELLECTUAL GRAY)
ST-4	PAINTED STUCCO TO MATCH PT-6 (SW 9554 - GOING GREY)
TR-1	BUILDING ACCENT TRIM: ALUM. BRAKE-METAL. COLOR: MATCH ACM-1 BRITE RED

ELEVATION KEYNOTES

- SECTION A. 2-C-I OF PARKER LAND DEVELOPMENT CODE MET. SEE MATERIAL AND GLAZING TABLE ON ELEVATIONS.
- SECTION A. 3-A OF PARKER LAND DEVELOPMENT CODE MET BY BREAKING MATERIALS HORIZONTALLY FROM BRICK TO STUCCO. SEE ELEVATIONS.
- SECTION A. 3-C OF PARKER LAND DEVELOPMENT CODE MET. PARAPETS PROVIDED CLEARLY ARTICULATE THE TOP OF THE BUILDING AS OF A. 3-C-III. ROOF IS INTEGRAL TO THE MASSING OF THE BUILDING AS OF A. 3-C-IV. USING ACCEPTED FLAT ROOF AS MENTIONED IN A. 3-C-V.
- SECTION A. 3-D OF PARKER LAND DEVELOPMENT CODE MET. PARAPETS HAVE BEEN BROKEN UP IN HEIGHT ON THE NORTH AND EAST SIDE OF BUILDING. SEE ELEVATIONS.
- SECTION C. 1-A OF PARKER LAND DEVELOPMENT CODE MET. TWO REQUIRED DESIGN ELEMENTS ARE THE WING CANOPY AND DRIVE-THRU AWNING
- SECTION C. 2 OF PARKER LAND DEVELOPMENT CODE DOES NOT APPLY. NO PUBLIC ENTRIES.
- SECTION C. 3 OF PARKER LAND DEVELOPMENT CODE MET. STOREFRONT ALONG BUILDING MEETS ALL REQUIREMENTS. STUCCO CONTROL JOINTS TO BE 1" IN THICKNESS, COLOR TO MATCH PT-5.

- X.A.3.a EXTERIOR BUILDING MASS:**
 CHANGE IN FACADE MATERIAL AND COLOR WHEN SWITCHING FROM STUCCO TO MASONRY AND ALSO VARIANCE IN COLOR BETWEEN CORNICE AND WATERTABLE TO THE FIELD STUCCO COLOR.
- X.A.3.a EXTERIOR BUILDING MASS:**
 CHANGE IN MATERIAL CREATES SHADOW LINE WITH WATERTABLE PROFILE AND VARIED THICKNESS OF STUCCO AND FULL BED MASONRY



REVISIONS

NO.	DATE	DESCRIPTION
-----	------	-------------

Drawing Size: 24 x 36	Project #: 22038
Drawn By: MBN	Checked By: RMF

Title:
 PROPOSED REVIEW BOARD ELEVATIONS

Sheet Number:
R003

LINCOLN PROFESSIONAL PARK FILING NO.1 LOT 3

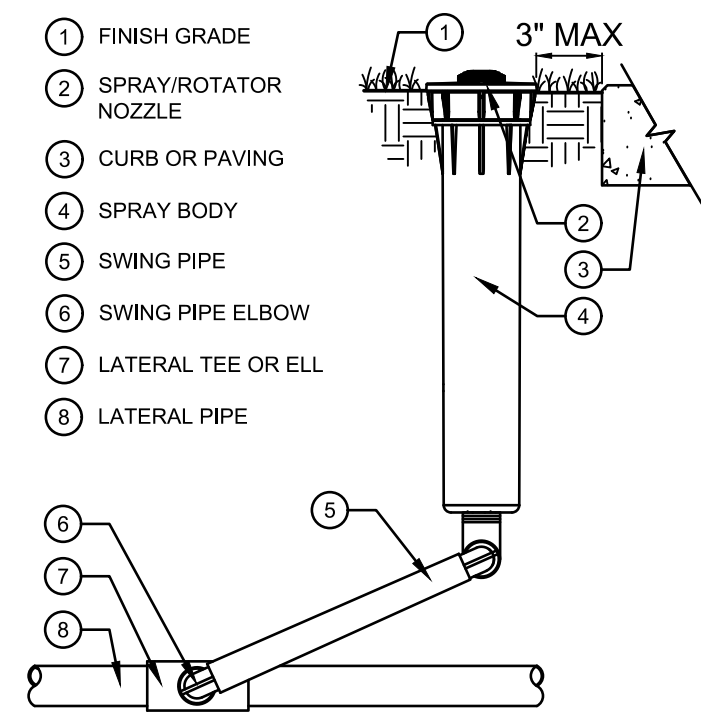
LOCATED IN THE NORTHWEST QUARTER OF SECTION 15, TOWNSHIP 6 SOUTH,
RANGE 66 WEST OF THE 6TH PRINCIPAL MERIDIAN,
CITY OF PARKER, COUNTY OF DOUGLAS, STATE OF COLORADO

SITE PLAN DOCUMENTS

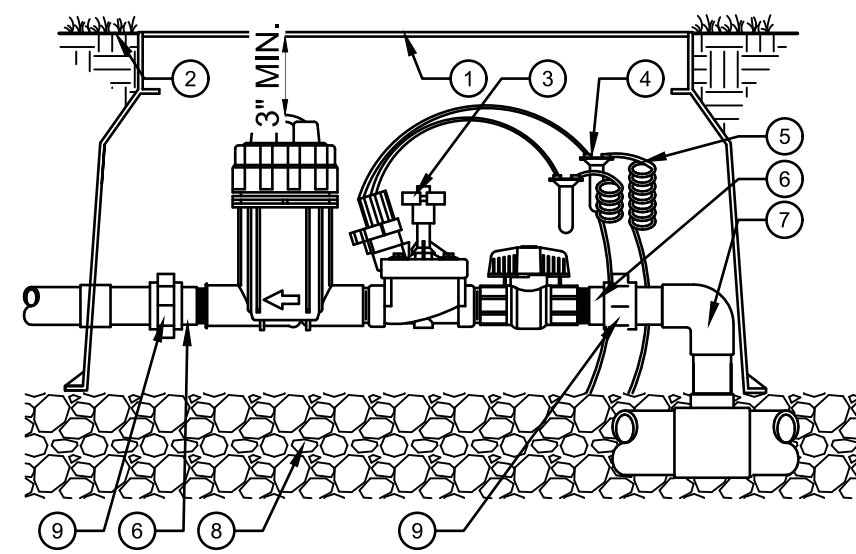
MARCH 2023

PRELIMINARY
NOT FOR BIDDING
NOT FOR CONSTRUCTION

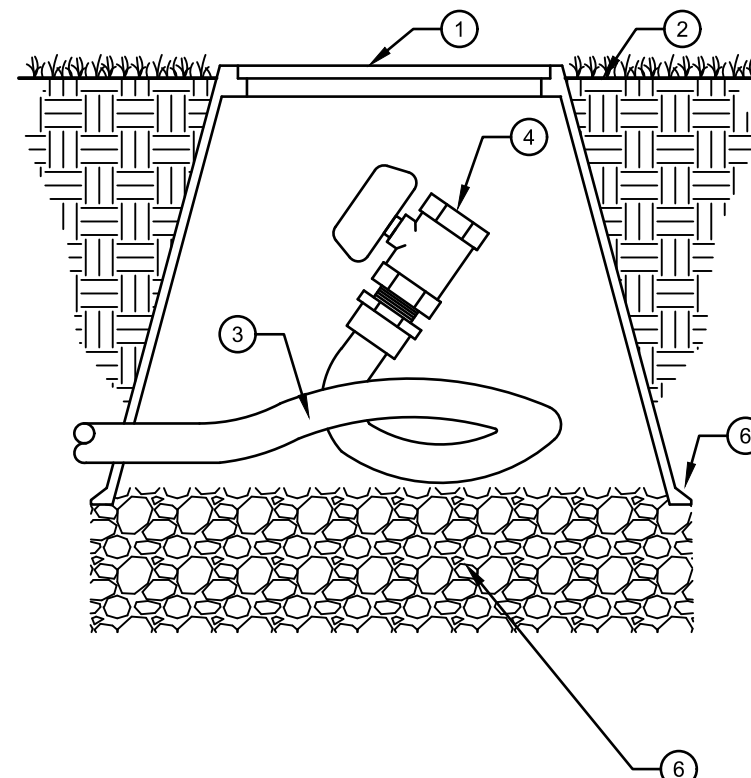
COPYRIGHT
THESE PLANS ARE AN INSTRUMENT OF SERVICE AND ARE THE PROPERTY OF GALLOWAY, AND MAY NOT BE DUPLICATED, DISCLOSED, OR REPRODUCED WITHOUT THE WRITTEN CONSENT OF GALLOWAY. COPYRIGHTS AND INFRINGEMENTS WILL BE ENFORCED AND PROSECUTED.



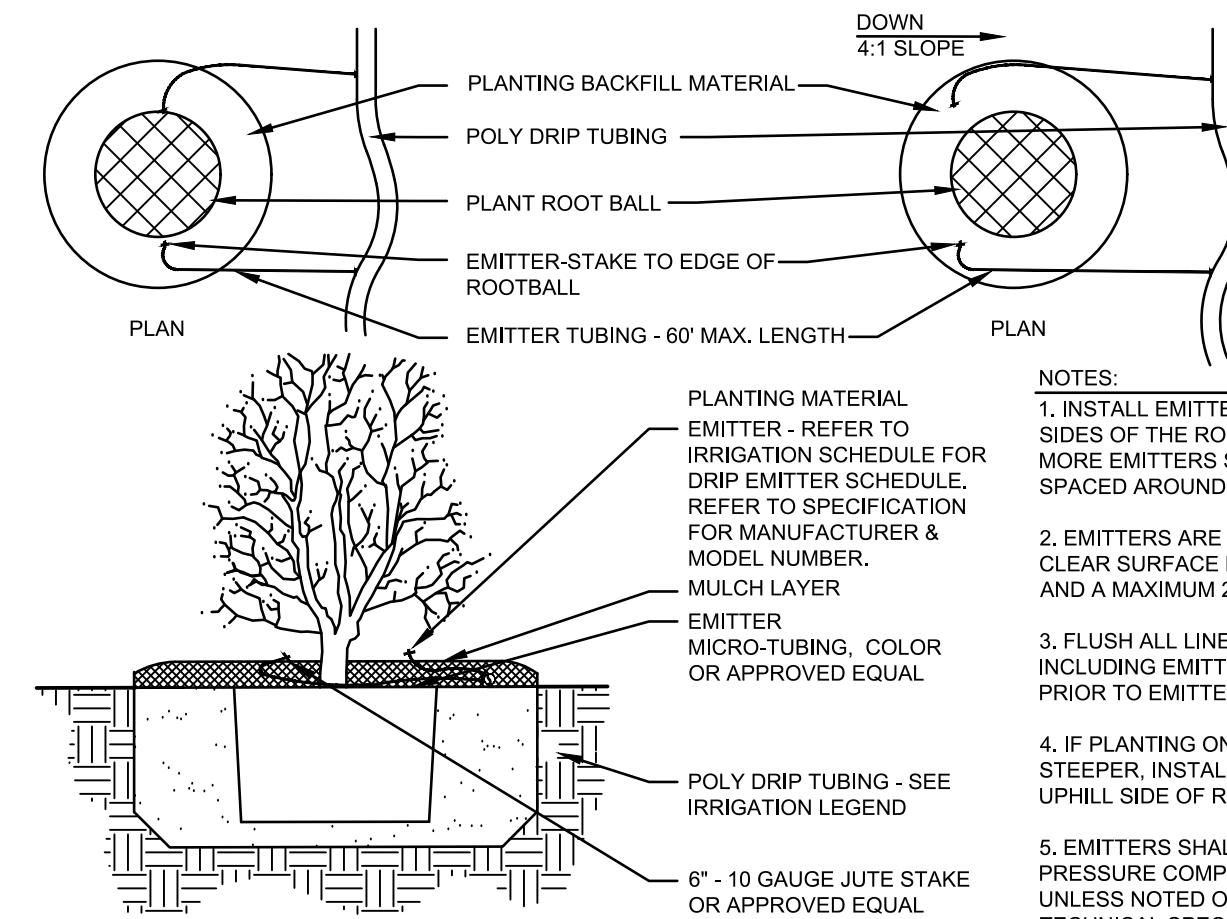
1 SPRAY/ROTATOR
SCALE: NOT TO SCALE



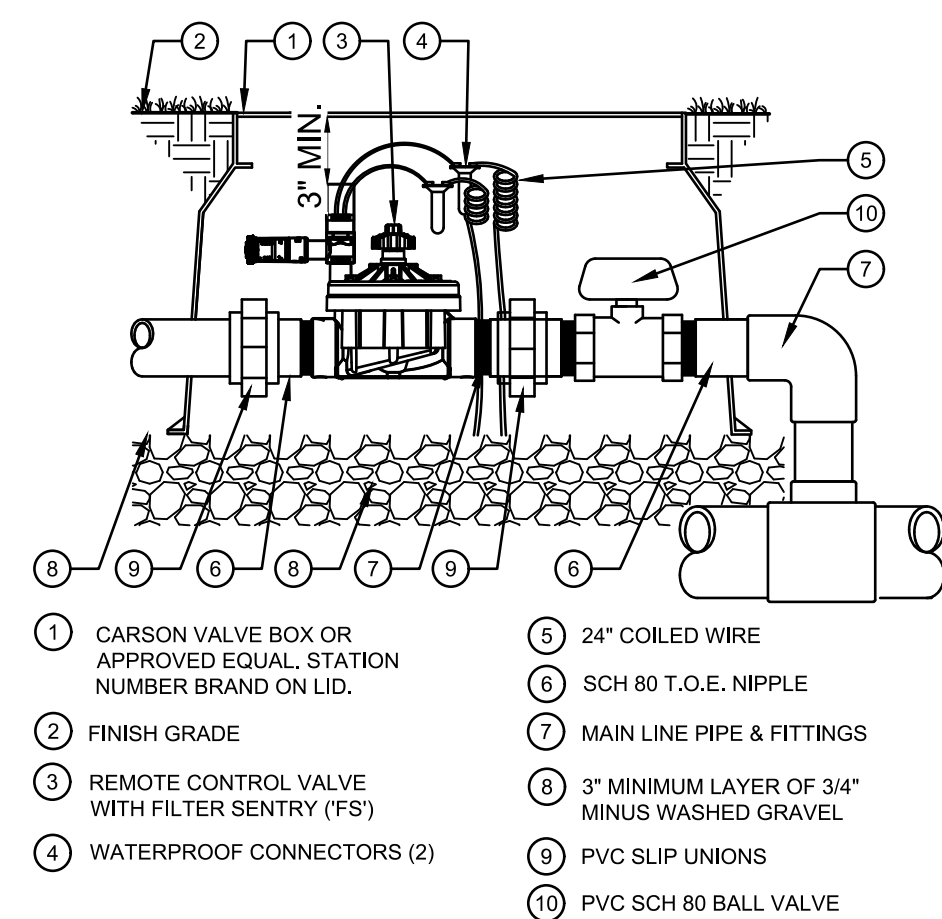
2 REMOTE DRIP CONTROL VALVE
SCALE: NOT TO SCALE



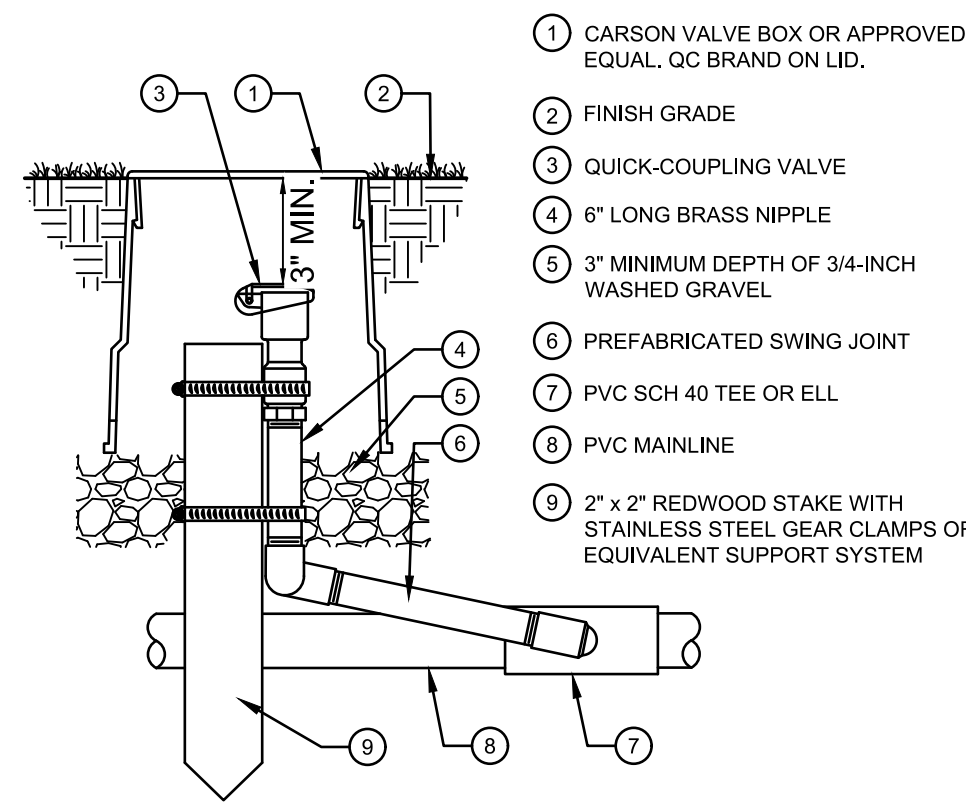
3 MANUAL FLUSH DRAIN VALVE
SCALE: NOT TO SCALE



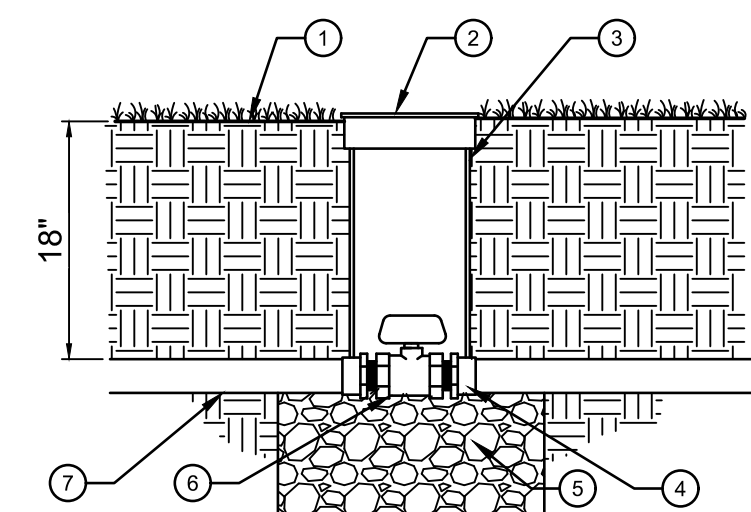
4 DRIP EMITTERS LAYOUT
SCALE: NOT TO SCALE



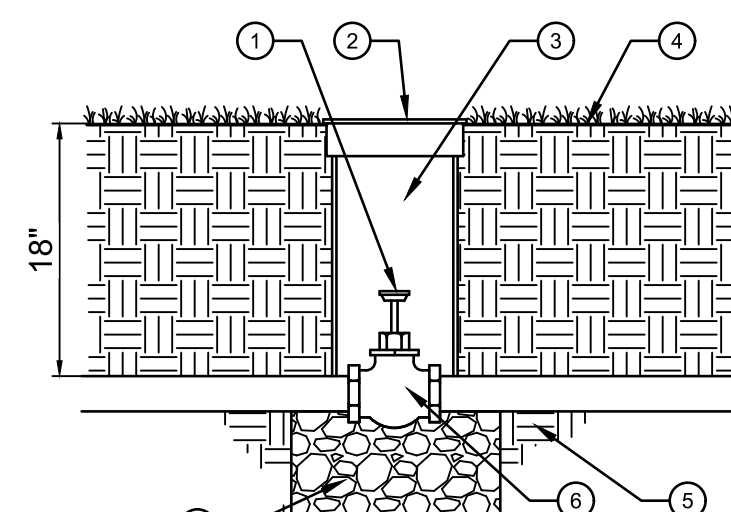
5 REMOTE CONTROL VALVE
SCALE: NOT TO SCALE



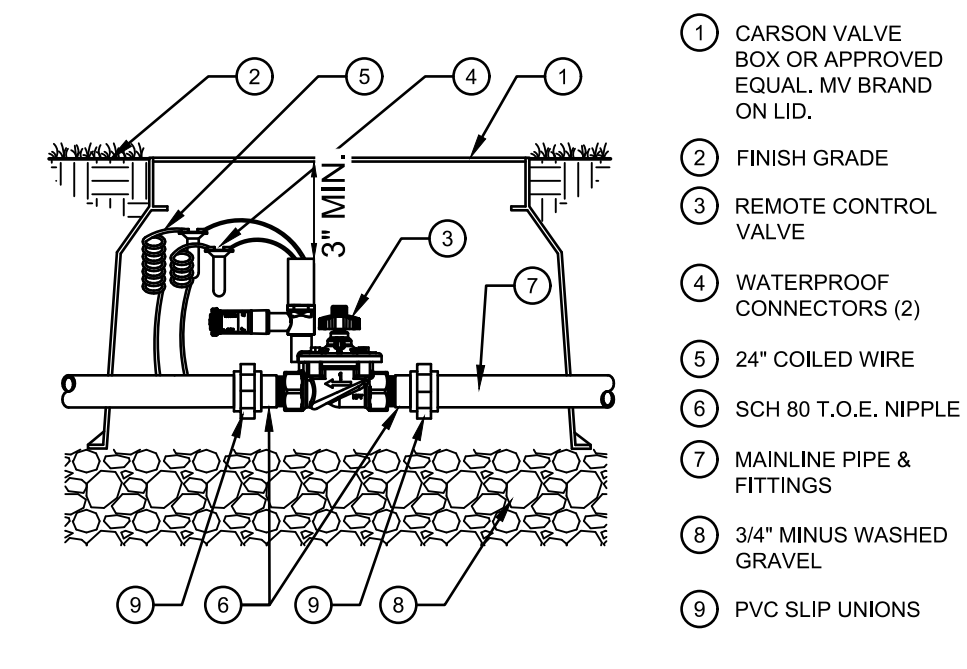
6 QUICK COUPLER
SCALE: NOT TO SCALE



7 BALL VALVE
SCALE: NOT TO SCALE



8 GATE VALVE
SCALE: NOT TO SCALE



9 MASTER VALVE
SCALE: NOT TO SCALE

PLAZA STREET PARTNERS
SITE PLAN DOCUMENTS

PARKER COLORADO

#	Date	Issue / Description	Init.
1	08/23/22	1ST SUBMITTAL	SMB
2	12/14/22	2ND SUBMITTAL	SMB
3	03/08/23	3RD SUBMITTAL	SMB
4			
5			
6			
7			
8			
9			

Project No: PSP000001
Drawn By: TDN
Checked By: TDN
Date: 01/02/2024

IRRIGATION DETAILS

H:\Plaza Street Partners\CD_Park_PSP11_Arty\4-look and Draw\48075A_03\Rev\0504 - Irrigation Plan.dwg - Scott Brown - 2/15/24-18

