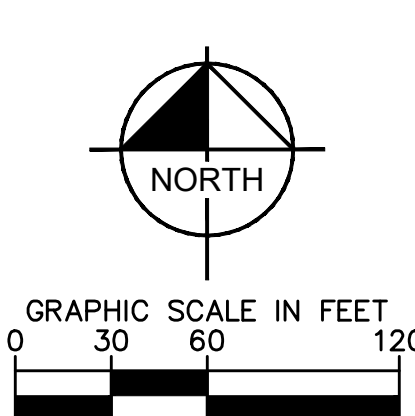
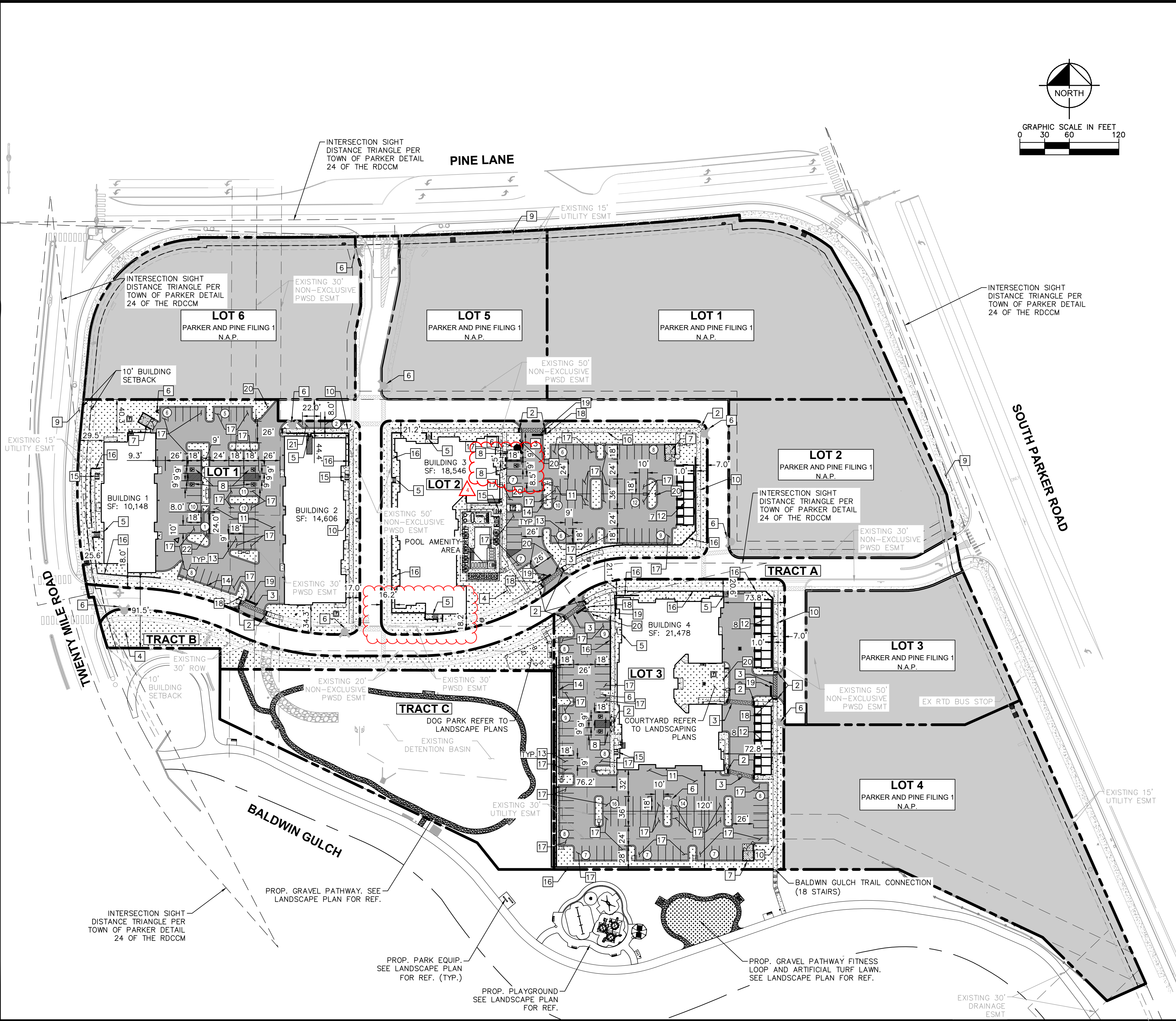


K:\DENVER_CAD\096481002_PSP\096481002PSP_SP.dwg - Project & Plot MFC\CAD\096481002PSP.dwg - 4/25/2024 1:13 PM
 THIS DOCUMENT, TOGETHER WITH THE CONCRETE AND GEOTECHNICAL REPORTS, IS PRESENTED HEREIN AS AN INSTRUMENT OF SERVICE. IT IS INTENDED ONLY FOR THE PROJECT AND SITE SPECIFICALLY IDENTIFIED HEREIN. NO OTHER PROJECTS OR SITES SHOULD BE REFERENCED IN THIS DOCUMENT. WITHOUT WRITTEN AUTHORIZATION AND ADAPTATION BY KIMLEY-HORN AND ASSOCIATES, INC. SHALL BE WITHOUT LIABILITY TO KIMLEY-HORN AND ASSOCIATES, INC.



LEGEND

	PROPERTY LINE
	NUMBER OF PARKING SPACES
	ACCESSIBLE PARKING SPACES
	PROPOSED ELECTRICAL TRANSFORMER
	FIRE DEPARTMENT CONNECTION
	LANDSCAPED AREA
	STANDARD DUTY ASPHALT PAVING
	NOT A PART (N.A.P.)
	EXISTING COLORED CONCRETE
	HEAVY DUTY CONCRETE
	PROPOSED GRAVEL PATHWAY
	PROPOSED EASEMENT
	EXISTING EASEMENT
	PROPOSED CURB AND GUTTER

- KEY NOTES**
- 1 PROPOSED ADA ACCESSIBLE SIDEWALK RAMP
 - 2 PROPOSED ACCESSIBLE RAMP W/ 36" DEEP DETECTABLE WARNING
 - 3 PROPOSED 5' WIDE PEDESTRIAN CONNECTION.
 - 4 PROPOSED MONUMENT SIGN.
 - 5 PROPOSED PRIVATE STAIRWAY. WIDTH PER PLAN
 - 6 EXISTING/PROPOSED FIRE HYDRANT.
 - 7 PROPOSED TRASH ENCLOSURE.
 - 8 PROPOSED ADA PARKING STALLS.
 - 9 EXISTING 8' CONCRETE SIDEWALK.
 - 10 PROPOSED 5' CONCRETE SIDEWALK.
 - 11 PROPOSED STANDARD DUTY ASPHALT PAVING.
 - 12 DETACHED GARAGE. PARKING COUNT PER PLAN.
 - 13 PROPOSED STANDARD 9'X18' PARKING STALL
 - 14 PROPOSED STANDARD CURB AND GUTTER
 - 15 PROPOSED 6 STALL BICYCLE PARKING
 - 16 PROPOSED RETAINING WALL
 - 17 PROPOSED ISLAND ADJACENT 10'X18' PARKING STALL
 - 18 PROPOSED STOP SIGN R-1
 - 19 PROPOSED STOP BAR
 - 20 PROPOSED NO PARKING - FIRE LANE SIGN R8-31
 - 21 PROPOSED 8'X22' PARALLEL PARKING STALL
 - 22 PROPOSED 8'X24' PARALLEL PARKING STALL

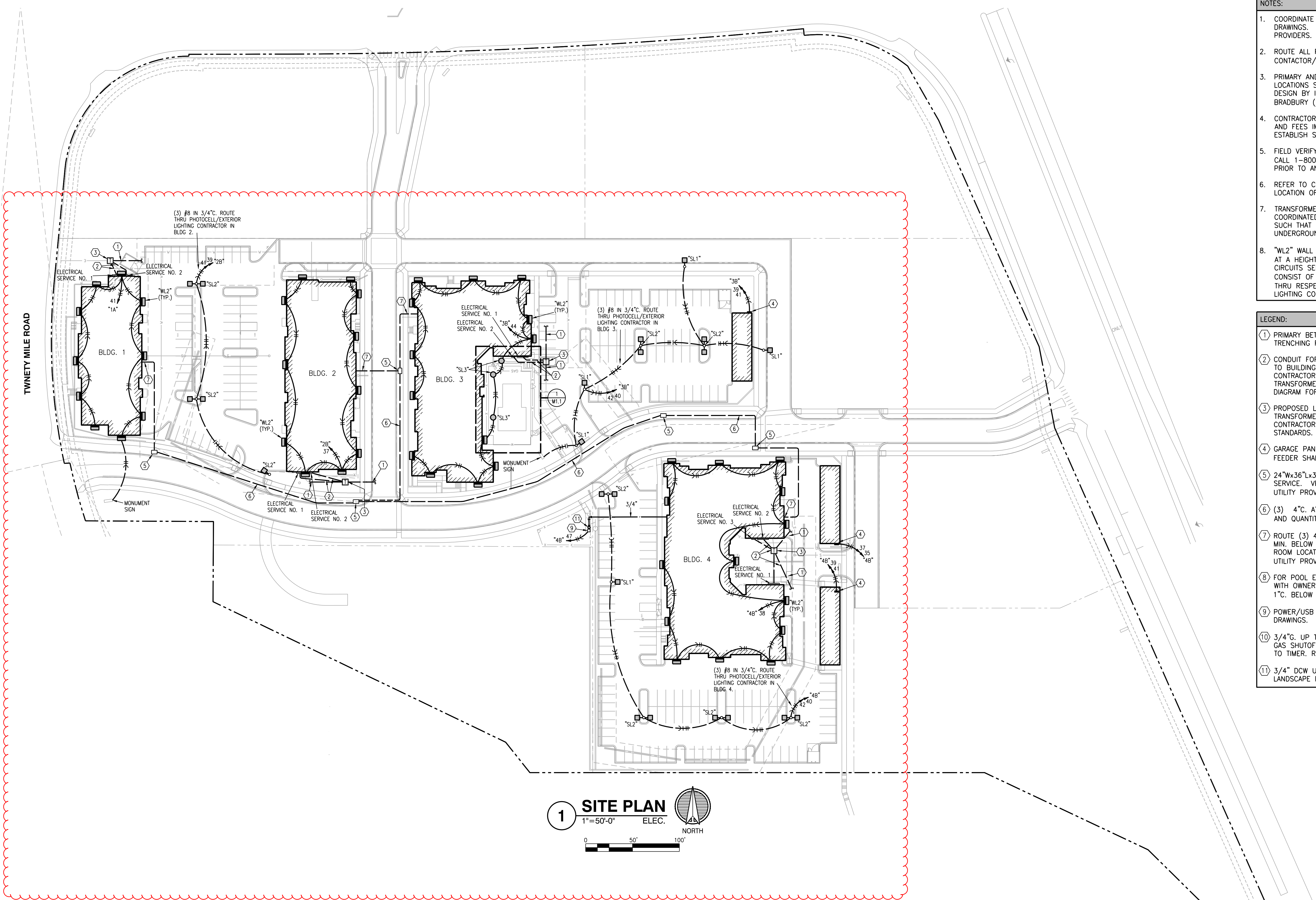
- NOTES:**
1. ALL LIGHTING ON-SITE, EXTERIOR, UNROOFED LIGHTING SHALL CONFORM TO THE TOWN'S LIGHTING STANDARDS.
 2. ALL MECHANICAL EQUIPMENT SHALL BE SCREENED FROM VIEW FROM A PUBLIC RIGHT OF WAY.
 3. LOCATION OF TRASH RECEPTACLES SHALL BE SCREENED BY A SOLID SCREEN FENCE SURROUNDING AT LEAST 3 SIDES OF THE CONTAINER.

NO.	REVISION	BY	DATE
4	ADA STALL/RAMP REVISION	MM	4/25/24 DS
3	SIDEWALK REVISION	MM	8/14/23 DS
2	ADA RAMP REVISION	MM	10/28/22 DS
1	ADA RAMP REVISION	JG	08/01/22 DS

Kimley»Horn
 2021 KIMLEY-HORN AND ASSOCIATES, INC.
 4582 South Ulster Street, Suite 1500
 Denver, Colorado 80237 (303) 228-2300

DESIGNED BY: DLS
 DRAWN BY: JRK
 CHECKED BY: DLS
 DATE: 05/27/21

PARKER AND PINE FILING NO. 2 LOTS 1-3
 PARKER, CO
 MULTI-FAMILY SITE PLAN
 OVERALL SITE PLAN



1 SITE PLAN
 1"=50'-0" ELEC.
 NORTH
 0 50' 100'

- NOTES:**
- COORDINATE WATER AND SANITARY SEWER WITH CIVIL DRAWINGS. VERIFY ALL UTILITY LOCATIONS WITH PROVIDERS.
 - ROUTE ALL POLE LIGHTING THRU EXTERIOR LIGHTING CONTACTOR/PHOTOCELL IN RESPECTIVE BUILDING.
 - PRIMARY AND SECONDARY POWER AND TRANSFORMER LOCATIONS SHOWN ARE PRELIMINARY ONLY. FINAL DESIGN BY IREA POINT OF CONTACT FOR IREA, JIM BRADBURY (jbradbury@irea.Coop)
 - CONTRACTOR SHALL INCLUDE IN BASE BID ALL COSTS AND FEES IMPOSED BY THE UTILITY PROVIDERS TO ESTABLISH SERVICE TO THE BUILDINGS.
 - FIELD VERIFY ALL ABOVE AND BELOW GRADE UTILITIES. CALL 1-800-DIGSAFE (1-800-344-7233) 48 HOURS PRIOR TO ANY DIGGING FOR UTILITY LOCATORS.
 - REFER TO CIVIL DRAWINGS FOR COORDINATION AND LOCATION OF OTHER BUILDING SERVICES.
 - TRANSFORMER AND LIGHT POLE LOCATIONS SHALL BE COORDINATED WITH OTHER SITE UTILITIES AND LOCATED SUCH THAT THEY ARE NOT DIRECTLY ABOVE UNDERGROUND UTILITIES.
 - "WL2" WALL PACKS ON BUILDINGS SHALL BE MOUNTED AT A HEIGHT OF 20'-0" AFG. EXTERIOR LIGHTING CIRCUITS SERVING BUILDING MOUNTED LIGHTING SHALL CONSIST OF (3) #10 IN 3/4"C. AND SHALL BE ROUTED THRU RESPECTIVE BUILDING'S PHOTOCELL/EXTERIOR LIGHTING CONTRACTOR.

- LEGEND:**
- PRIMARY BETWEEN TRANSFORMERS VERIFY CONDUIT AND TRENCHING REQUIREMENTS WITH UTILITY COMPANY.
 - CONDUIT FOR SECONDARY SERVICE FROM TRANSFORMER TO BUILDING ALONG WITH TRENCHING AND BACKFILL BY CONTRACTOR. CONDUITORS AND TERMINATIONS AT TRANSFORMER BY POWER COMPANY. REFER TO RISER DIAGRAM FOR DETAILS.
 - PROPOSED LOCATION FOR 3 PHASE TRANSFORMER. TRANSFORMER BY POWER COMPANY. PAD BY CONTRACTOR ACCORDING TO POWER COMPANY STANDARDS.
 - GARAGE PANEL. ROUTE FEEDER TO HOUSE PANEL. FEEDER SHALL CONSIST OF (3) #10 IN 3/4"C.
 - 24"Wx36"Lx30"D QUAZITE HANDHOLE FOR TELE/DATA SERVICE. VERIFY SIZE, QUANTITY AND LOCATION WITH UTILITY PROVIDER(S) AND CIVIL PLANS.
 - (3) 4"C. AT 36" MIN. BELOW GRADE. VERIFY SIZE AND QUANTITY WITH UTILITY PROVIDER(S).
 - ROUTE (3) 4"C. STUBBED UP INTO MDF ROOM AT 36" MIN. BELOW GRADE. REFER TO T-SHEETS FOR MDF ROOM LOCATIONS. VERIFY SIZE AND QUANTITY WITH UTILITY PROVIDER(S).
 - FOR POOL EMERGENCY PHONE. VERIFY EXACT LOCATION WITH OWNER, FINAL POOL DESIGN AND AHJ. PROVIDE 1"C. BELOW GRADE TO IT ROOM.
 - POWER/USB PEDASTAL. REFER TO LANDSCAPE DRAWINGS.
 - 3/4"C. UP TO GAS FIRE PIT (55MBH). PROVIDE WITH GAS SHUTOFF VALVE AND SOLENOID VALVE CONNECTED TO TIMER. REFER TO LANDSCAPE DRAWINGS.
 - 3/4" DCW UP TO DRINKING FOUNTAIN. REFER TO LANDSCAPE DRAWINGS.

PARKER AND PINE FILING NO.2
 LOTS 1-3 PARKER, CO
 SITE LIGHTING PLAN

SEBREE Architects, Inc.
 97 Dover Street, Suite 400, Avon, Indiana 46123-7356
 Phone (317) 272-7800 FAX (317) 272-7808
 Web Site: <http://www.sebreearchitects.com>

LS&A
 Letimer Sommers & Associates, P.A.
 CONSULTING ENGINEERS
 9639 SW Summerfield Drive, Suite A
 Topeka, Kansas 66614-8374
 8625 College Boulevard, Suite 102
 Overland Park, Kansas 66210
 Telephone: (785) 733-3332
 Email: lsapa@lsapa.com
 LSA PROJECT NO. 2007017

**PARKER + PINE APTS
 BUILDING TYPE I**
 9540 TWENTY NILE RD.
 PARKER, COLORADO



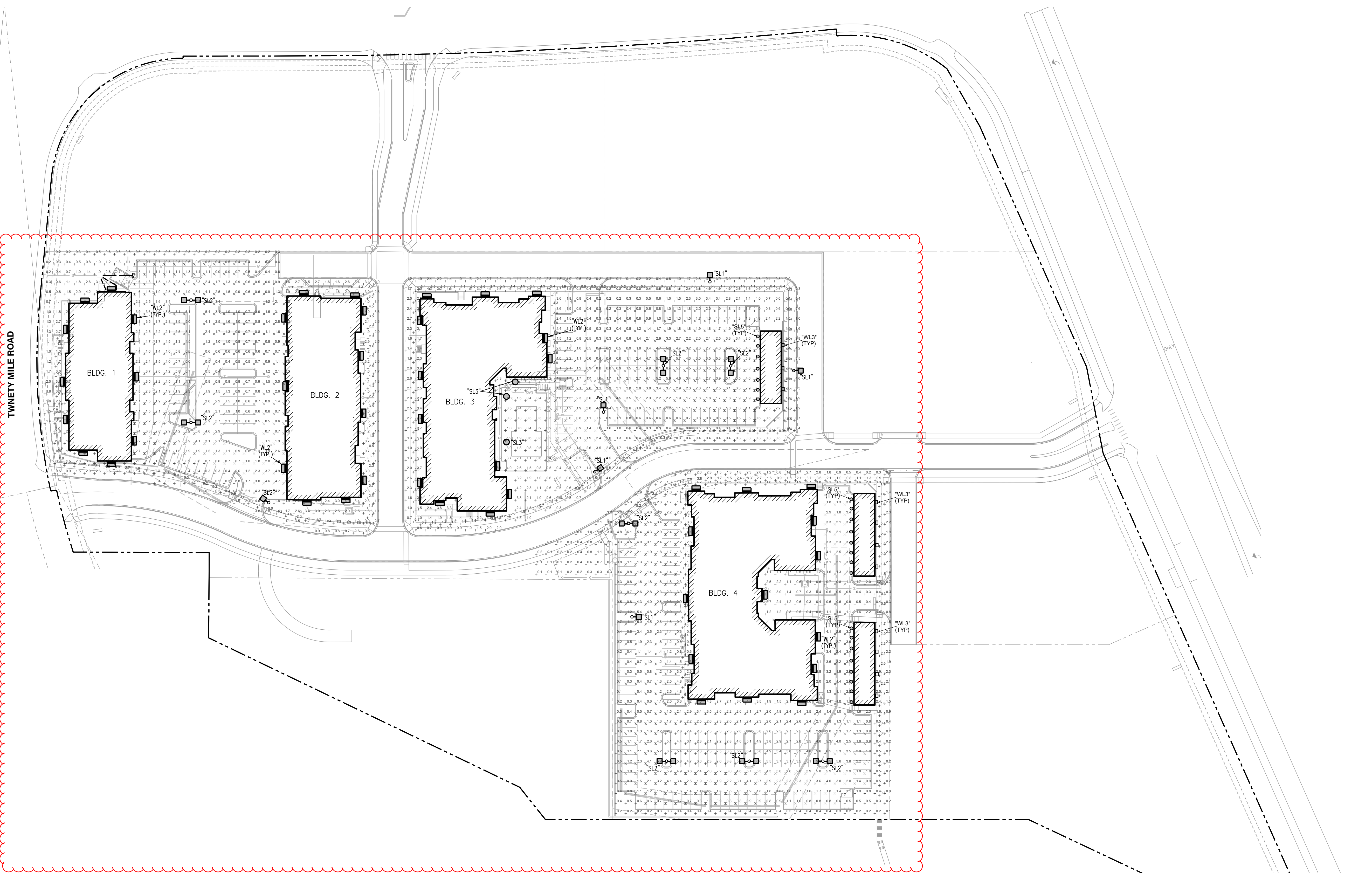
6-28-21

NO.	DATE	BY	DESCRIPTION
	01.15.21		PERMIT SET
	01.20.21		BID SET
2	05.07.21		REVISION 2: ADDENDUM 2
	06.28.21		RE-BID SET
	10.14.21		ISSUED FOR CONSTRUCTION
	08.19.22		RFI

PROJECT NO. 20013
 DATE: 10/14/21
 DRAWN BY: [Signature]
 CHECKED BY: [Signature]

SITE PLAN - ELECTRICAL

BUILDING TYPE I
1E001



TWENTY MILE ROAD

1 SITE PHOTOMETRIC PLAN
 1"=50'-0"
 0 50' 100'
 NORTH

Exterior Lighting Schedule							
MARK	DESCRIPTION	MFR	MODEL	MOUNTING	FINISH	LAMPS	NOTES
SL1	Site Pole Light	MAXLITE	MP-AR-100-U-T3-40-B	Pole	Bronze	100W, 12260 lumen, 4000k	25' Pole, Type III
SL2	Site Pole Light	MAXLITE	(2) MP-AR-100-U-T3-40-B	Pole	Bronze	(2) 100 W, 12260 lumen, 4000k	25' Pole, Type III, (2) heads @ 180 degrees apart on single pole
SL3	Site Bollard	MAXLITE	BL-CLRD-18U-XXX	Wall	Bronze	18W, 2200 lumen, 4000k	3'-0" HEIGHT
SL5	Exterior Puck Light	C&F Lighting	LED6WT	Ceiling	White	15W, 1000 lumen, 3000 K	9'-0" HEIGHT
WL2	Wall Pack	MAXLITE	WPCL-40-U-T4-CS-B	Wall	Bronze	40W, 1700 lumen, 4000k	20' MOUNTING HT
WL3	Wall Pack	Westgate Lighting	WMX-MD-20-20W-40k	Pole	Bronze	20W, 2800 lumen, 4000K	8' MOUNTING HT

SITE ILLUMINANCE		
MINIMUM	MAXIMUM	AVERAGE
0.1	8.3	1.81
SITE UNIFORMITY RATIOS		
RESIDENTIAL AREA	AVG:MIN	MAX:MIN
DRIVEWAYS	4:1	10:1
WALKWAYS	3:1	3:1
PARKING	4:1	6:1

SEBREE Architects, Inc.
 97 Dover Street, Suite 400, Avon, Indiana 46123-7356
 Phone (317) 272-7800 FAX (317) 272-7808
 Web Site: <http://www.sebreearchitects.com>

LS&A
 Latimer Sommers & Associates, P.A.
 CONSULTING ENGINEERS
 9630 SW Summerfield Drive, Suite A
 Topeka, Kansas 66614-3874
 8625 College Boulevard, Suite 102
 Overland Park, Kansas 66210
 Telephone: (785) 233-3332
 Email: lsapa@lsapa.com
 LSA PROJECT NO. 2007017

**PARKER + PINE APTS
 SITE**
 PARKER AND PINE FILING NO.2
 LOTS 1-3 PARKER, COLORADO

COLORADO LICENSED PROFESSIONAL ENGINEER
 40389
 4-22-24
 CERTIFIED BY

PARKER AND PINE FILING NO.2
 LOTS 1-3 PARKER, CO
 SITE LIGHTING CALCULATIONS

NO.	DATE	BY	DESCRIPTION
1	01.15.21		PERMIT SET
2	01.20.21		BID SET
2	05.07.21		REVISION 2; ADDENDUM 2
	06.28.21		RE-BID SET
	10.14.21		ISSUED FOR CONSTRUCTION

PROJECT NO.	20013	CHECKED BY	
SITE PHOTOMETRIC PLAN			
SITE			
E002			

PARKER MULTI-FAMILY - TYPE SL3
 17W, 4000K, Flush Mount, Wet Location, 3000K, 4000K, 5000K, 6000K, 6500K, 7000K, 8000K, 9000K, 10000K, 12000K, 15000K, 20000K, 25000K, 30000K, 35000K, 40000K, 45000K, 50000K, 55000K, 60000K, 65000K, 70000K, 75000K, 80000K, 85000K, 90000K, 95000K, 100000K

PERFORMANCE:
 Available in lower packages ranging from 12,400lm to 36,400lm
 • Customized beam spread available at 3000K-6000K
 • 10000K beam spread available
 • 50-277V dimming standard. 0-10V dimming options available
 • 100V surge protection standard

OPTICS:
 Available in Type K, Type N, Type H, and Type V optics

CONSTRUCTION:
 • Die Cast Aluminum housing
 • Tempered glass lens
 • 1/2" thick lens
 • 1/2" thick lens
 • 1/2" thick lens

INSTALLATION:
 • 1/2" standard knock-out hole in the center of the back housing and 2" on the top of the housing
 • Built-in level helper assure straight housing

ORDER STRUCTURE:

FAMILY	WATTAGE	TEMPERATURE	OPTICS	FINISH	OPTIONAL
SL3	17W	4000K	Standard	Dark Bronze	None

NOTES:
 PARKER MULTI-FAMILY - TYPE SL3
 17W, 4000K, Flush Mount, Wet Location, 3000K, 4000K, 5000K, 6000K, 6500K, 7000K, 8000K, 9000K, 10000K, 12000K, 15000K, 20000K, 25000K, 30000K, 35000K, 40000K, 45000K, 50000K, 55000K, 60000K, 65000K, 70000K, 75000K, 80000K, 85000K, 90000K, 95000K, 100000K

PERFORMANCE:
 Available in lower packages ranging from 12,400lm to 36,400lm
 • Customized beam spread available at 3000K-6000K
 • 10000K beam spread available
 • 50-277V dimming standard. 0-10V dimming options available
 • 100V surge protection standard

OPTICS:
 Available in Type K, Type N, Type H, and Type V optics

CONSTRUCTION:
 • Die Cast Aluminum housing
 • Tempered glass lens
 • 1/2" thick lens
 • 1/2" thick lens
 • 1/2" thick lens

INSTALLATION:
 • 1/2" standard knock-out hole in the center of the back housing and 2" on the top of the housing
 • Built-in level helper assure straight housing

ORDER STRUCTURE:

FAMILY	WATTAGE	TEMPERATURE	OPTICS	FINISH	OPTIONAL
SL3	17W	4000K	Standard	Dark Bronze	None

PARKER MULTI-FAMILY - TYPE SL3
 17W, 4000K, Flush Mount, Wet Location, 3000K, 4000K, 5000K, 6000K, 6500K, 7000K, 8000K, 9000K, 10000K, 12000K, 15000K, 20000K, 25000K, 30000K, 35000K, 40000K, 45000K, 50000K, 55000K, 60000K, 65000K, 70000K, 75000K, 80000K, 85000K, 90000K, 95000K, 100000K

PERFORMANCE:
 Available in lower packages ranging from 12,400lm to 36,400lm
 • Customized beam spread available at 3000K-6000K
 • 10000K beam spread available
 • 50-277V dimming standard. 0-10V dimming options available
 • 100V surge protection standard

OPTICS:
 Available in Type K, Type N, Type H, and Type V optics

CONSTRUCTION:
 • Die Cast Aluminum housing
 • Tempered glass lens
 • 1/2" thick lens
 • 1/2" thick lens
 • 1/2" thick lens

INSTALLATION:
 • 1/2" standard knock-out hole in the center of the back housing and 2" on the top of the housing
 • Built-in level helper assure straight housing

ORDER STRUCTURE:

FAMILY	WATTAGE	TEMPERATURE	OPTICS	FINISH	OPTIONAL
SL3	17W	4000K	Standard	Dark Bronze	None

MaxLite
 A NEW WAY OF LIGHT

DISC LIGHT CCT SELECTABLE SERIES

PRODUCT DESCRIPTION:
 The LED Disc Light is available as a flush mount fixture and surface downlight seven electrical configurations, color and optics by making it possible to install custom downlighting without a recessed can. The luminaire is wet location rated, CCT selectable (3000K/4000K/5000K/6000K/6500K/7000K and 8100K), based on both a wet kit and a trimless. The slim profile Disc Light is available in wet kits, and mounts directly to a 2"x2" hole housing and standard 4" hole. In other words, more options and lower SPKs to stock on distribute channels and job sites.

FEATURES:
 • 20000K beam spread available
 • 100V surge protection standard
 • 100V surge protection standard
 • 100V surge protection standard

CONSTRUCTION:
 • Die Cast Aluminum housing
 • Plastic lens

LISTINGS:
 • UL Listed for Wet Locations
 • ENERGY STAR Certified
 • Supports CSA Part 6 high efficiency lighting requirements
 • JIS listed for 200V x 50Hz

WARRANTY:
 10 year standard warranty (further details available at www.maxlite.com)
 (Further details available at www.maxlite.com)
 (Further details available at www.maxlite.com)

ORDER STRUCTURE:

FAMILY	WATTAGE	TEMPERATURE	OPTICS	FINISH	OPTIONAL
SL3	17W	4000K	Standard	Dark Bronze	None

DISC LIGHT CCT SELECTABLE SERIES

	DISC DOWN	DISC UP
Beam Spread (ft)	20	18
Lumens Delivered (lm)	400	360
Equivalent Wattage	40W	36W
Beam Angle	37°	36°
CRI	90	90
Color Temperature (K)	CCT Selectable (3000K, 4000K, 5000K, 6000K, 6500K, 7000K, 8100K)	4000K
Life Expectancy (hrs)	50,000 hrs	50,000 hrs
Finish	Dark Bronze	Dark Bronze
Flame Rating	UL94V-0	UL94V-0
Mounting	Flush	Flush
Operating Temperature	32°F to 104°F	32°F to 104°F
Lighting	General Purpose	General Purpose
Recessing	Not Recessed	Not Recessed

PRODUCT DIMENSIONS:

MaxLite
 A NEW WAY OF LIGHT

WALLMAX™ LARGE CUTOFF WPCL SERIES

PRODUCT DESCRIPTION:
 The Wallmax Large Cutoff WPCL Series is a high output, wide beam, wall-mounted lighting fixture. It offers a wide range of output and options including CCT selectability for the outdoor color choice between 3000K, 4000K and 5000K color temperatures.

FEATURES:
 • 100V, 277V, 347V, 480V available
 • 0-10V dimming
 • Color Selectable between 3000K, 4000K or 5000K

CONSTRUCTION:
 • Die Cast Aluminum housing with polycarbonate LED lens

WARRANTY:
 10 year standard warranty (further details available at www.maxlite.com)
 (Further details available at www.maxlite.com)
 (Further details available at www.maxlite.com)

ORDER STRUCTURE:

FAMILY	WATTAGE	TEMPERATURE	OPTICS	FINISH	OPTIONAL
WPCL	100W	4000K	Standard	Dark Bronze	None

MaxLite
 A NEW WAY OF LIGHT

WALLMAX™ LARGE WPCL SERIES

PRODUCT DESCRIPTION:
 The Wallmax Large Cutoff WPCL Series is a high output, wide beam, wall-mounted lighting fixture. It offers a wide range of output and options including CCT selectability for the outdoor color choice between 3000K, 4000K and 5000K color temperatures.

FEATURES:
 • 100V, 277V, 347V, 480V available
 • 0-10V dimming
 • Color Selectable between 3000K, 4000K or 5000K

CONSTRUCTION:
 • Die Cast Aluminum housing with polycarbonate LED lens

WARRANTY:
 10 year standard warranty (further details available at www.maxlite.com)
 (Further details available at www.maxlite.com)
 (Further details available at www.maxlite.com)

ORDER STRUCTURE:

FAMILY	WATTAGE	TEMPERATURE	OPTICS	FINISH	OPTIONAL
WPCL	100W	4000K	Standard	Dark Bronze	None

FXLuminaire
 A NEW WAY OF LIGHT

PARKER MULTI-FAMILY - LL1
 18W, 4000K, 120-277V, 8000K, 10000K, 15000K, 20000K, 25000K, 30000K, 35000K, 40000K, 45000K, 50000K, 55000K, 60000K, 65000K, 70000K, 75000K, 80000K, 85000K, 90000K, 95000K, 100000K

PRODUCT DESCRIPTION:
 The FXLuminaire Parker Multi-Family LL1 is a high output, wide beam, wall-mounted lighting fixture. It offers a wide range of output and options including CCT selectability for the outdoor color choice between 3000K, 4000K and 5000K color temperatures.

FEATURES:
 • 100V, 277V, 347V, 480V available
 • 0-10V dimming
 • Color Selectable between 3000K, 4000K or 5000K

CONSTRUCTION:
 • Die Cast Aluminum housing with polycarbonate LED lens

WARRANTY:
 10 year standard warranty (further details available at www.maxlite.com)
 (Further details available at www.maxlite.com)
 (Further details available at www.maxlite.com)

ORDER STRUCTURE:

FAMILY	WATTAGE	TEMPERATURE	OPTICS	FINISH	OPTIONAL
LL1	18W	4000K	Standard	Dark Bronze	None

MaxLite
 A NEW WAY OF LIGHT

PATHMAX™ LED BOLLARDS CLASSIC SERIES DOME TOP

PRODUCT DESCRIPTION:
 The Pathmax Classic LED Bollard is an economical and energy efficient choice for lighting walkways, plazas and other pedestrian areas in commercial and residential applications.

FEATURES:
 • 120-277V with dimming capability
 • Dimming other standard
 • CRI 90
 • 10 year warranty
 • Up to 60,000 hour L70 (Helm, TM-21 standards @ 25°C)

CONSTRUCTION:
 • Extruded Aluminum housing
 • Clear Polycarbonate lens
 • An optional IP65 can be installed and ordered 1/2" from the top of the shaft

ENVIRONMENT:
 • CSA Group for wet locations
 • IP65 rated Optical system

INSTALLATION:
 • Flush Mounting Base with Ventilated Resistant Screws
 • Installation kit with 4" Anchor Bolts included

WARRANTY:
 10 year standard warranty (further details available at www.maxlite.com)
 (Further details available at www.maxlite.com)
 (Further details available at www.maxlite.com)

ORDER STRUCTURE:

FAMILY	WATTAGE	TEMPERATURE	OPTICS	FINISH	OPTIONAL
Pathmax	18W	4000K	Standard	Dark Bronze	None

MaxLite
 A NEW WAY OF LIGHT

PATHMAX™ LED BOLLARDS CLASSIC SERIES DOME TOP

PRODUCT DESCRIPTION:
 The Pathmax Classic LED Bollard is an economical and energy efficient choice for lighting walkways, plazas and other pedestrian areas in commercial and residential applications.

FEATURES:
 • 120-277V with dimming capability
 • Dimming other standard
 • CRI 90
 • 10 year warranty
 • Up to 60,000 hour L70 (Helm, TM-21 standards @ 25°C)

CONSTRUCTION:
 • Extruded Aluminum housing
 • Clear Polycarbonate lens
 • An optional IP65 can be installed and ordered 1/2" from the top of the shaft

ENVIRONMENT:
 • CSA Group for wet locations
 • IP65 rated Optical system

INSTALLATION:
 • Flush Mounting Base with Ventilated Resistant Screws
 • Installation kit with 4" Anchor Bolts included

WARRANTY:
 10 year standard warranty (further details available at www.maxlite.com)
 (Further details available at www.maxlite.com)
 (Further details available at www.maxlite.com)

ORDER STRUCTURE:

FAMILY	WATTAGE	TEMPERATURE	OPTICS	FINISH	OPTIONAL
Pathmax	18W	4000K	Standard	Dark Bronze	None

MaxLite
 A NEW WAY OF LIGHT

TYPE WL3

PRODUCT DESCRIPTION:
 The MaxLite Type WL3 is a high output, wide beam, wall-mounted lighting fixture. It offers a wide range of output and options including CCT selectability for the outdoor color choice between 3000K, 4000K and 5000K color temperatures.

FEATURES:
 • 100V, 277V, 347V, 480V available
 • 0-10V dimming
 • Color Selectable between 3000K, 4000K or 5000K

CONSTRUCTION:
 • Die Cast Aluminum housing with polycarbonate LED lens

WARRANTY:
 10 year standard warranty (further details available at www.maxlite.com)
 (Further details available at www.maxlite.com)
 (Further details available at www.maxlite.com)

ORDER STRUCTURE:

FAMILY	WATTAGE	TEMPERATURE	OPTICS	FINISH	OPTIONAL
WL3	100W	4000K	Standard	Dark Bronze	None

MaxLite
 A NEW WAY OF LIGHT

TYPE WL3

PRODUCT DESCRIPTION:
 The MaxLite Type WL3 is a high output, wide beam, wall-mounted lighting fixture. It offers a wide range of output and options including CCT selectability for the outdoor color choice between 3000K, 4000K and 5000K color temperatures.

FEATURES:
 • 100V, 277V, 347V, 480V available
 • 0-10V dimming
 • Color Selectable between 3000K, 4000K or 5000K

CONSTRUCTION:
 • Die Cast Aluminum housing with polycarbonate LED lens

WARRANTY:
 10 year standard warranty (further details available at www.maxlite.com)
 (Further details available at www.maxlite.com)
 (Further details available at www.maxlite.com)

ORDER STRUCTURE:

FAMILY	WATTAGE	TEMPERATURE	OPTICS	FINISH	OPTIONAL
WL3	100W	4000K	Standard	Dark Bronze	None

MaxLite
 A NEW WAY OF LIGHT

A-HS Wall Light LINE-VOLTAGE

PRODUCT DESCRIPTION:
 The MaxLite A-HS Wall Light is a high output, wide beam, wall-mounted lighting fixture. It offers a wide range of output and options including CCT selectability for the outdoor color choice between 3000K, 4000K and 5000K color temperatures.

FEATURES:
 • 100V, 277V, 347V, 480V available
 • 0-10V dimming
 • Color Selectable between 3000K, 4000K or 5000K

CONSTRUCTION:
 • Die Cast Aluminum housing with polycarbonate LED lens

WARRANTY:
 10 year standard warranty (further details available at www.maxlite.com)
 (Further details available at www.maxlite.com)
 (Further details available at www.maxlite.com)

ORDER STRUCTURE:

FAMILY	WATTAGE	TEMPERATURE	OPTICS	FINISH	OPTIONAL
A-HS	100W	4000K	Standard	Dark Bronze	None

MaxLite
 A NEW WAY OF LIGHT

LANDSCAPE & ARCHITECTURAL LIGHTING

PRODUCT DESCRIPTION:
 The MaxLite Landscape & Architectural Lighting fixture is a high output, wide beam, wall-mounted lighting fixture. It offers a wide range of output and options including CCT selectability for the outdoor color choice between 3000K, 4000K and 5000K color temperatures.

FEATURES:
 • 100V, 277V, 347V, 480V available
 • 0-10V dimming
 • Color Selectable between 3000K, 4000K or 5000K

CONSTRUCTION:
 • Die Cast Aluminum housing with polycarbonate LED lens

WARRANTY:
 10 year standard warranty (further details available at www.maxlite.com)
 (Further details available at www.maxlite.com)
 (Further details available at www.maxlite.com)

ORDER STRUCTURE:

FAMILY	WATTAGE	TEMPERATURE	OPTICS	FINISH	OPTIONAL
LA	100W	4000K	Standard	Dark Bronze	None

MaxLite
 A NEW WAY OF LIGHT

LANDSCAPE & ARCHITECTURAL LIGHTING

PRODUCT DESCRIPTION:
 The MaxLite Landscape & Architectural Lighting fixture is a high output, wide beam, wall-mounted lighting fixture. It offers a wide range of output and options including CCT selectability for the outdoor color choice between 3000K, 4000K and 5000K color temperatures.

FEATURES:
 • 100V, 277V, 347V, 480V available
 • 0-10V dimming
 • Color Selectable between 3000K, 4000K or 5000K

CONSTRUCTION:
 • Die Cast Aluminum housing with polycarbonate LED lens

WARRANTY:
 10 year standard warranty (further details available at www.maxlite.com)
 (Further details available at www.maxlite.com)
 (Further details available at www.maxlite.com)

ORDER STRUCTURE:

FAMILY	WATTAGE	TEMPERATURE	OPTICS	FINISH	OPTIONAL
LA	100W	4000K	Standard	Dark Bronze	None

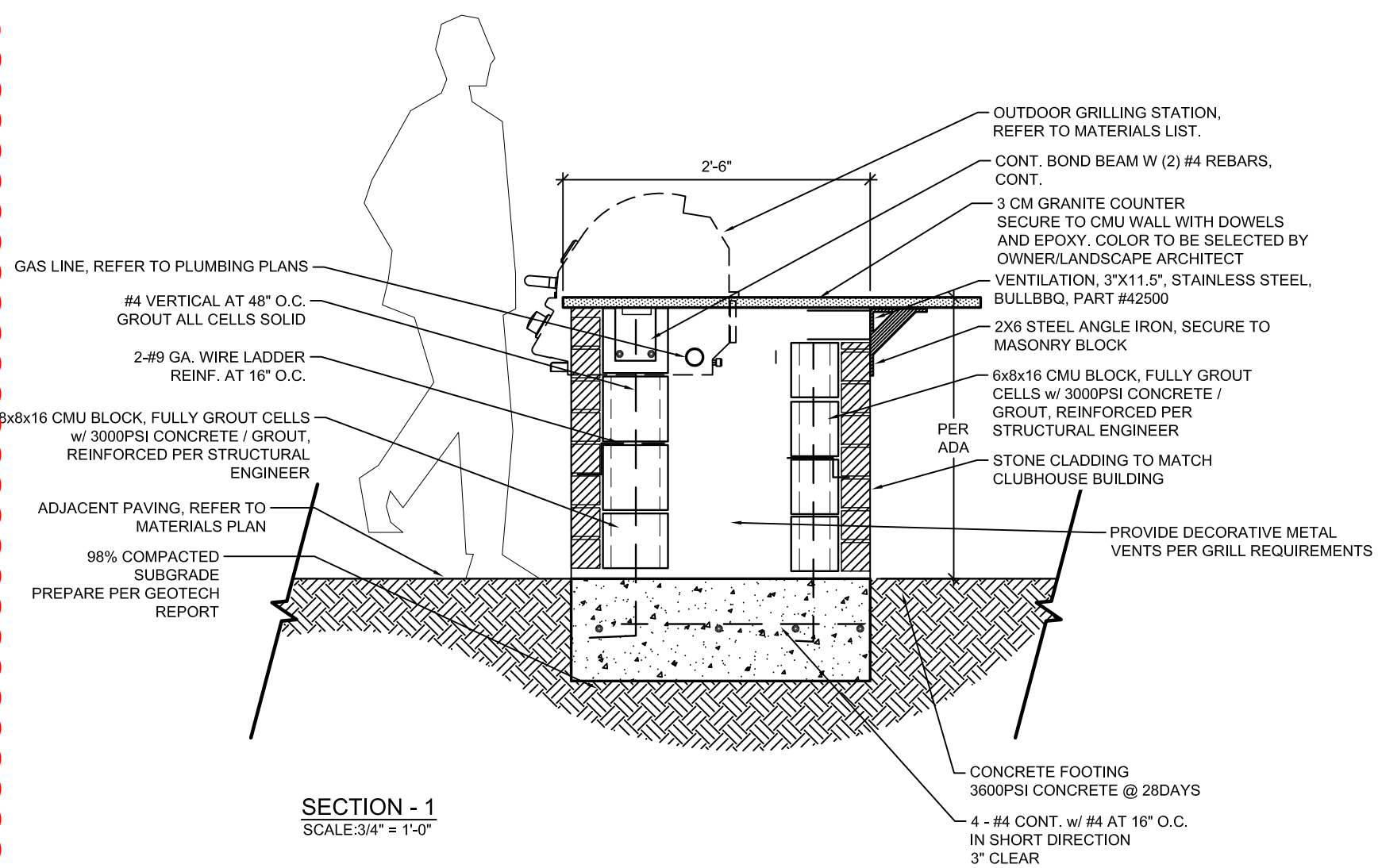
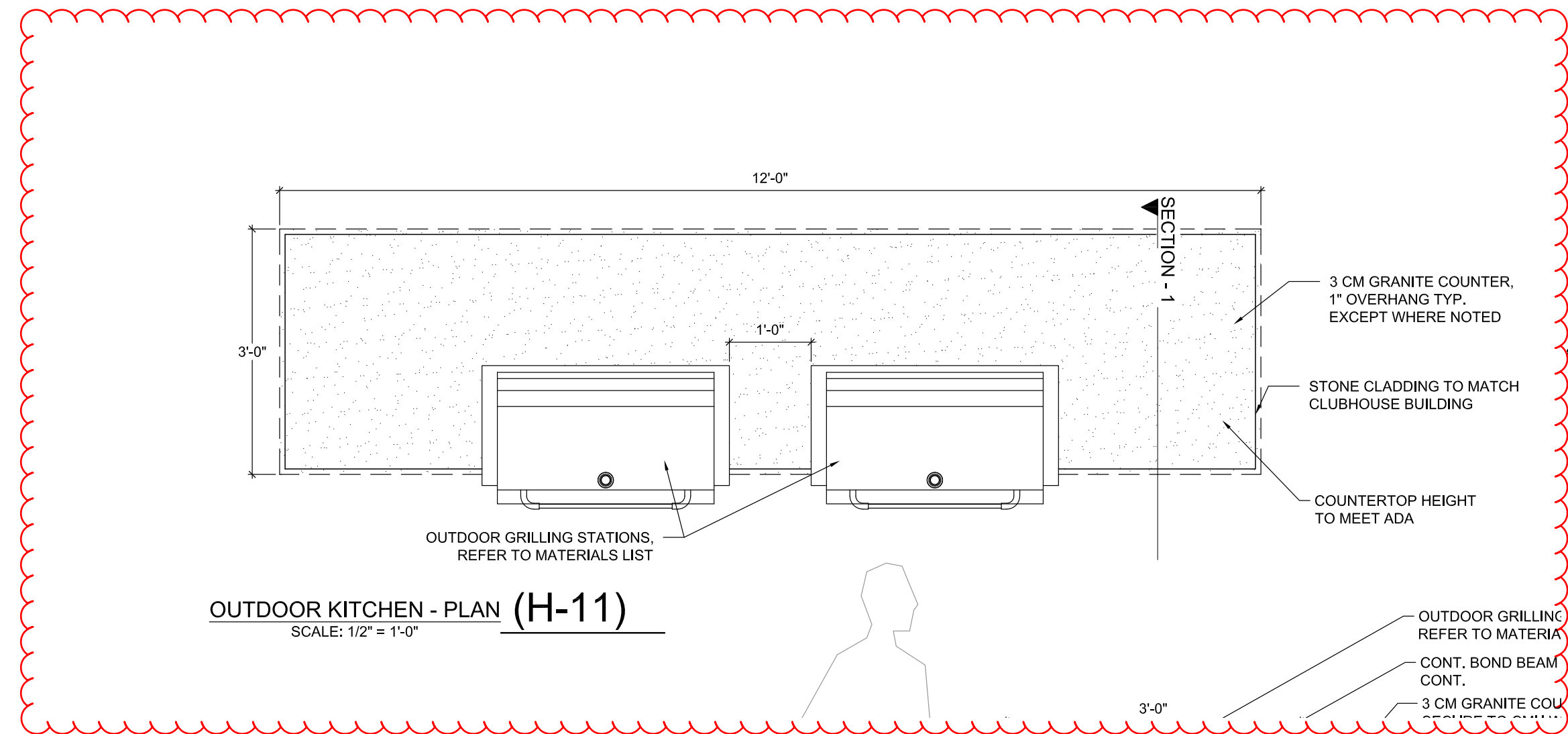


Comments	Date	#
Lighting Responses to Staff Comments 03	04/19/2021	
Lighting Responses to Staff Comments 04	06/28/2021	
Revisions		

Drawn By:	Checked By:	Date:	Scale:
jrago	jrago	5/28/2021	NTS

Parker and Pine Multi-Family
Site Lighting Details

8 of 49



MATERIALS LIST

OUTDOOR GRILL STATION
38" BRAMMA STAINLESS STEEL NATURAL GAS GRILL W/ FINISHING FRAME BY BULLBDO

GRILL JACKET
38" GRILL INSULATION JACKET BY BULLBDO

DOUBLE ACCESS DOORS
1804 STAINLESS STEEL DOUBLE ACCESS DOORS BY OCI

*GAS SHUT-OFF VALVE ASSEMBLY, GAS CONNECTIONS, ELECTRICAL WIRING TO BE LOCATED UNDER GRILL AND BEHIND ACCESS DOORS, PER LOCAL BUILDING CODE (REFER TO NOTE 6.1)

MANUFACTURERS:

GRILL APPLIANCES AND FURNISHINGS
BULL OUTDOOR PRODUCTS
2465 WEST WALNUT AVE.
RIALTO CA, 92376
PHONE: (800) 521-2855

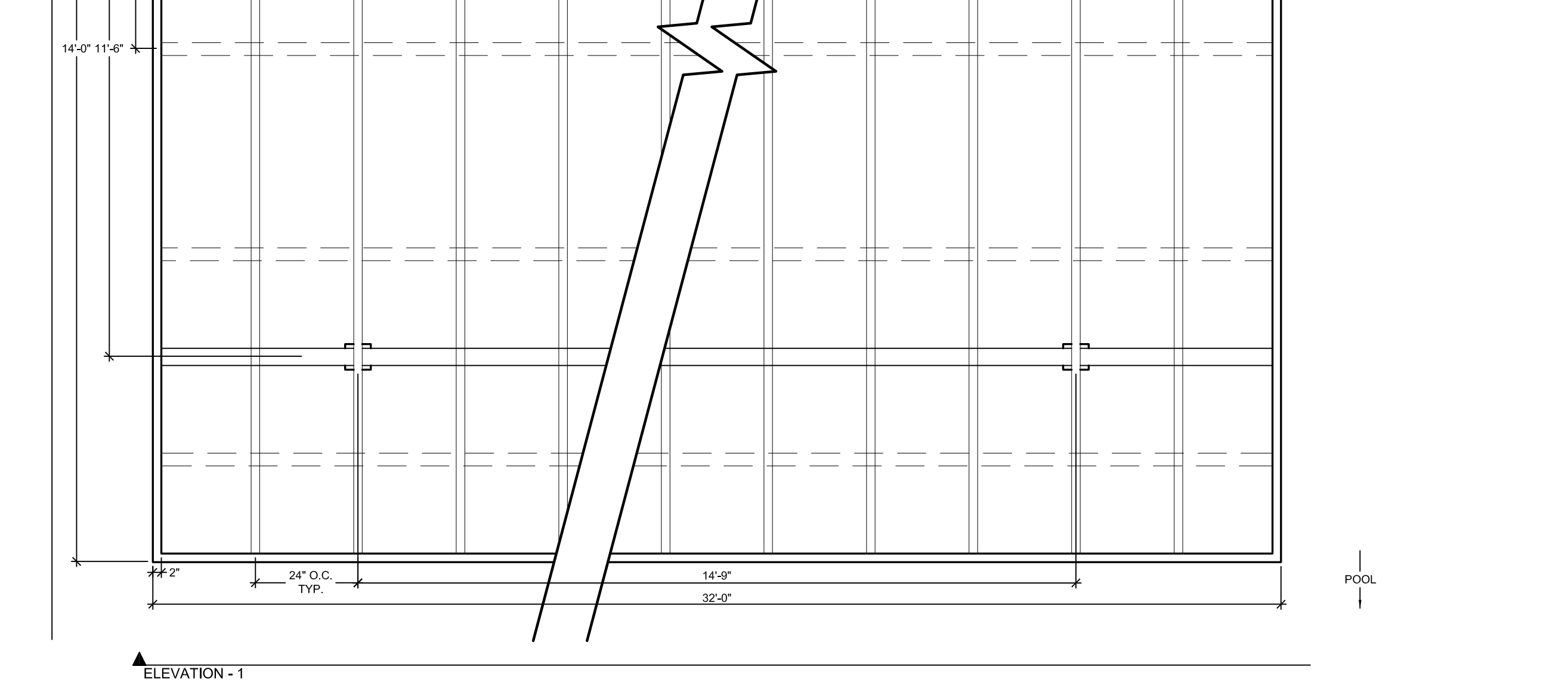
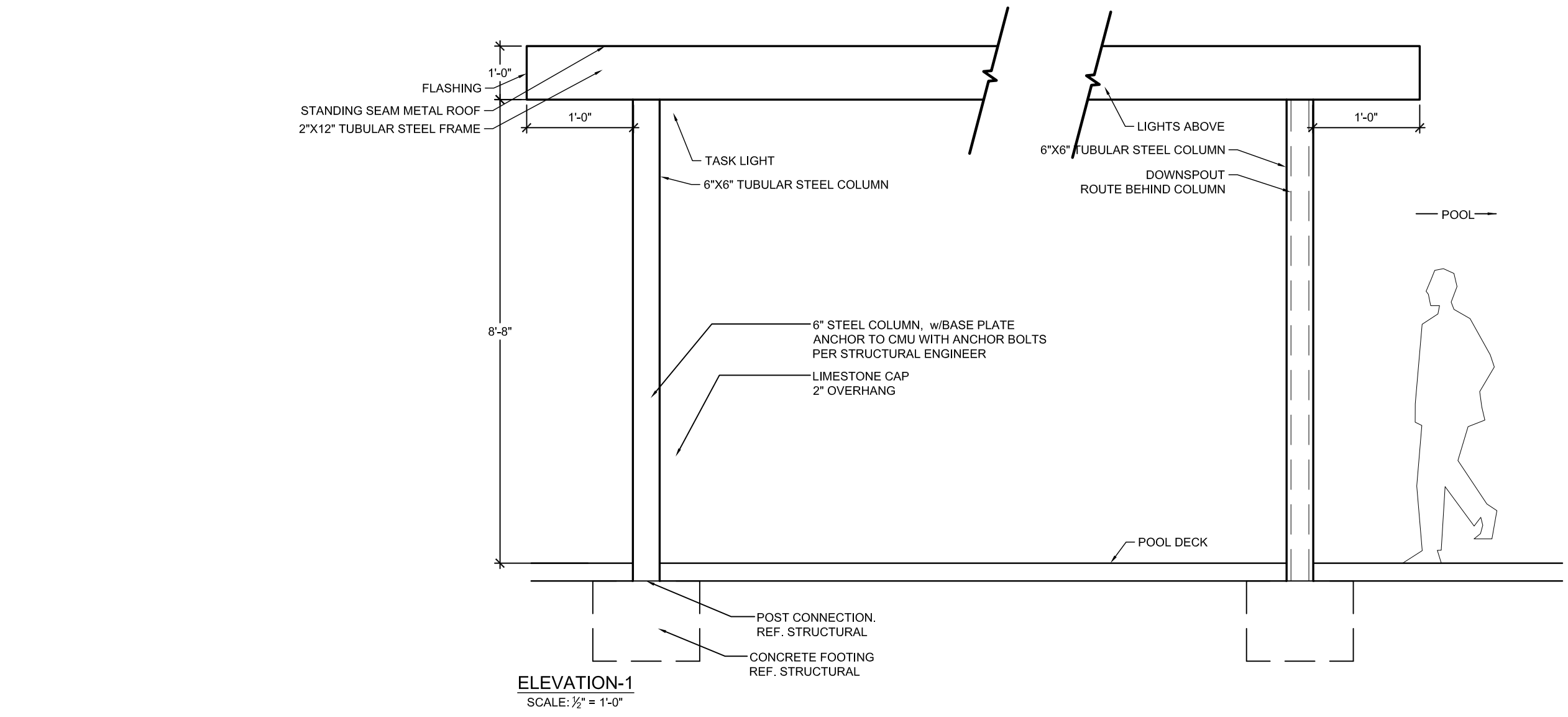
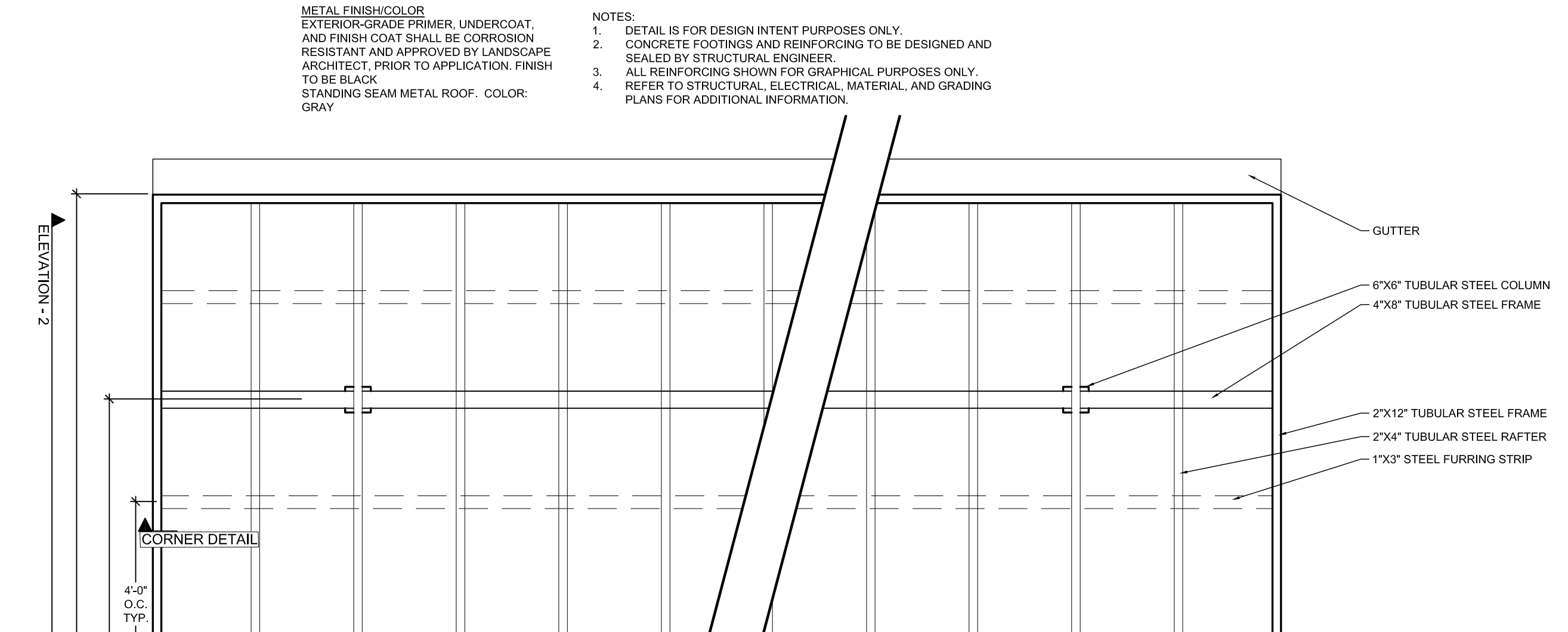
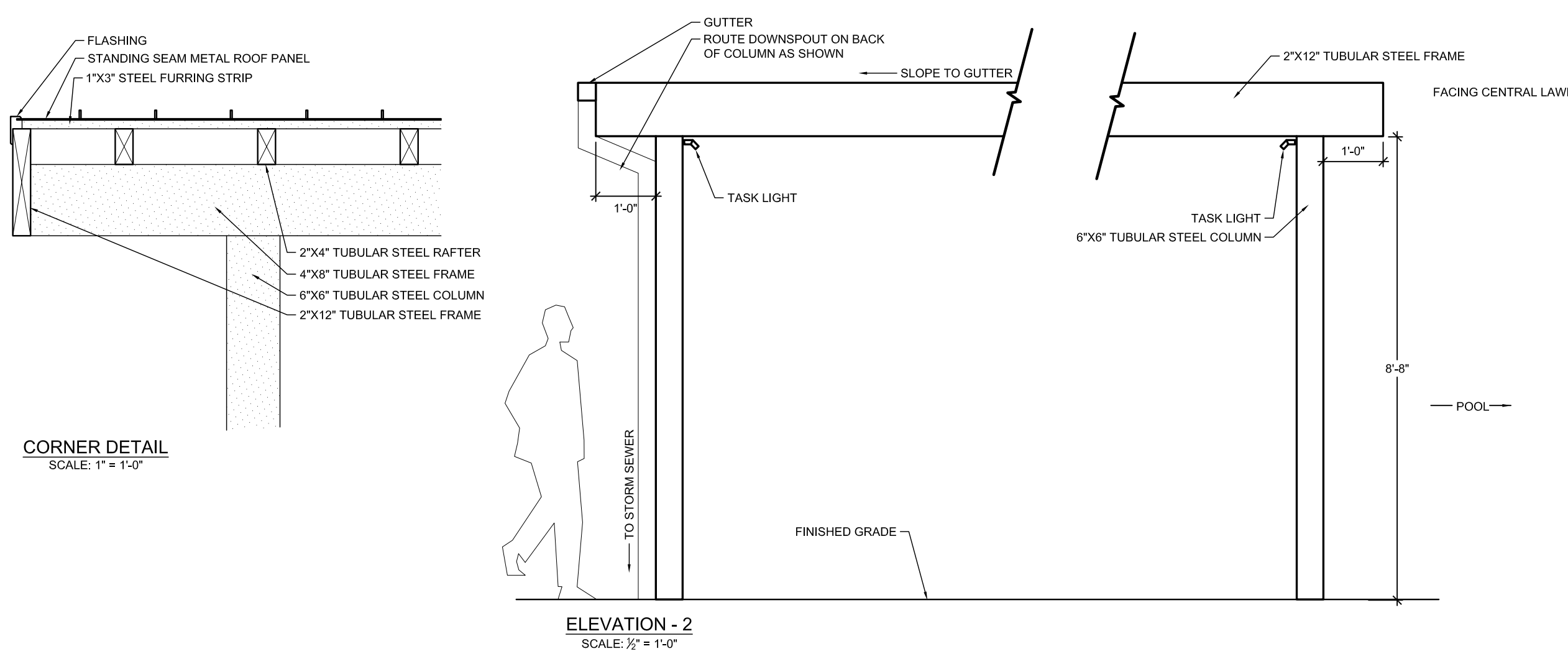
NOTES:

1. ALL WALLS, CONCRETE FOOTINGS AND REINFORCING TO BE DESIGNED AND SEALED BY STRUCTURAL ENGINEER. CONTRACTOR TO SUBMIT COMPLETE SHOP DRAWINGS TO BE DESIGNED AND SEALED BY STRUCTURAL ENGINEER LICENSED IN THE STATE OF TEXAS AND REVIEWED FOR DESIGN INTENT BY OWNER/LANDSCAPE ARCHITECT FOR APPROVAL PRIOR TO CONSTRUCTION.
2. ALL REINFORCING SHOWN FOR GRAPHICAL PURPOSES ONLY.
3. CONTRACTOR TO INSTALL CONCRETE COUNTERTOP PER MANUFACTURER'S DETAILS AND SPECIFICATIONS.
4. GRILL ASSEMBLY TO INCLUDE BUT NOT LIMITED TO GRILL, GAS SHUT-OFF VALVE ASSEMBLY, GAS CONNECTIONS, ELECTRICAL WIRING, AUTOMATIC SHUT-OFF GAS TIMER SWITCH, AND VENTILATION
- 4.1. AUTOMATIC SHUT-OFF GAS TIMER SWITCH AND GAS SHUT-OFF VALVE ASSEMBLY TO BE OPERABLE WITH ONE HAND WITHOUT TIGHT GRASPING, PINCHING, OR TWISTING OF THE WRIST. SHALL BE MOUNTED WITHIN ACCESSIBLE REACH RANGE OF 15" TO 48" AFF, AND SHALL BE OPERABLE WITH LESS THAN 5 LBS OF FORCE.
5. REFER TO MANUFACTURER'S DETAILS AND INSTRUCTIONS FOR ALL CUT OUT DIMENSIONS FOR GAS GRILL AND ACCESS DOORS.
6. CONTRACTOR TO INSTALL GRILL AND ACCESS DOORS PER MANUFACTURER'S DETAILS AND SPECIFICATIONS, AND LOCAL AND STATE BUILDING CODES.
7. REFER TO ARCHITECTURAL, STRUCTURAL, ELECTRICAL, MATERIAL, AND GRADING PLANS FOR ADDITIONAL INFORMATION.

GENERAL GRILL INSTALLATION INSTRUCTIONS:

1. CONTRACTOR TO INSTALL GRILL, GRILL AREA COMPONENTS, AND ACCESS DOORS PER MANUFACTURER'S DETAILS AND SPECIFICATIONS, AND LOCAL AND STATE BUILDING CODES.
2. THE GRILL SHOULD NOT BE PLACED UNDER OR ON TOP OF ANY SURFACE THAT WILL BURN.
3. DO NOT OBSTRUCT THE FLOW OF COMBUSTION AND VENTILATION AIR AROUND THE GRILL HOUSING.
4. GAS VALVES ARE PRESET AT THE FACTORY TO OPERATE ON LP OR NATURAL GAS.
5. UPPER AND LOWER LEVEL VENTS MUST BE PROVIDED FOR COMBUSTION AIR ON BOTH SIDES OF BUILT-IN CABINET. VENTS ON BQ INSERT MUST REMAIN UNOBSTRUCTED TO ALLOW FOR COMBUSTION AIR AND VENTILATION. UPPER VENTS MUST BE LOCATED WITHIN 6 INCHES/127 CM/127 MM FROM THE TOP OF THE ISLAND ENCLOSURE TO THE BOTTOM OF THE VENT. LOWER VENTS MUST BE LOCATED WITHIN 1 INCH/2.54CM/25.4 MM FROM THE BOTTOM OF THE ISLAND ENCLOSURE TO THE BOTTOM OF THE FIRST VENT OPENINGS AND NO MORE THAN 5 INCHES/127 CM/127 MM FROM THE BOTTOM OF THE ISLAND ENCLOSURE TO THE TOP OF THE VENT.
6. VENTS MUST BE PROVIDED FOR COMBUSTION AIR AND VENTILATION ON BOTH SIDES OF BUILT-IN CABINET.
7. THE SIDES AND BACK OF THE GRILL SHOULD NOT BE ANY CLOSER THAN 21 INCHES/54 CM/533 MM TO COMBUSTIBLE CONSTRUCTION

SCALE: VARIES



2 TUBE STEEL SHADE STRUCTURE (H-12)
PLAN, ELEVATION, SECTION

SCALE VARIES

APPR	DATE	BY	REVISION	NO.

THE GARRETT COMPANIES
1051 GREENWOOD SPRINGS BLD. GREENWOOD, IN 46143
317-866-7923

DESIGNED BY: NAS
DRAWN BY: NAS
CHECKED BY: TGC
DATE: 04/19/21

PARKER AND PINE FILING NO. 2 LOTS 1-3
PARKER, CO
MULTI-FAMILY SITE PLAN
SITE DETAILS

PRELIMINARY FOR REVIEW PURPOSES ONLY AND SHALL NOT BE USED FOR BIDDING, PERMITTING, OR CONSTRUCTION.

Nicholas Allen Smith
Registered Landscape Architect of the State of COLORADO
Registration Number: 1436

NOT FOR CONSTRUCTION

PROJECT NO. 096481002

19 OF 49

MATERIAL PALETTE



ASPHALT SHINGLES



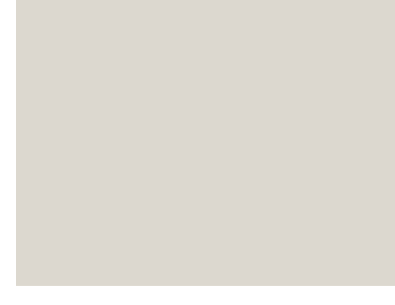
FIBER CEMENT SIDING & TRIM



FIBER CEMENT SIDING & TRIM



FIBER CEMENT SIDING & TRIM



FIBER CEMENT SIDING & TRIM



FIBER CEMENT SIDING & TRIM



STONE

GLAZING INFORMATION

FIRST FLOOR: 27%
 SECOND FLOOR: 26%
 TYPICAL UPPER LEVEL: 26%

NOTE: THE ELEVATIONS ARE IN COMPLIANCE WITH THE PARKER AND PINE MIXED-USE DEVELOPMENT DESIGN STANDARDS.



4 BUILDING 3 WEST ELEVATION
 NTS



3 BUILDING 3 SOUTH ELEVATION
 NTS



2 BUILDING 3 NORTH ELEVATION
 NTS



1 BUILDING 3 EAST ELEVATION
 NTS

SEBREE Architects, Inc.
 97 Dover Street, Suite 400, Avon, Indiana 46123-7356
 Phone (317) 272-7800 FAX (317) 272-7808
 Web Site: <http://www.sebreearchitects.com>



PARKER + PINE FILING #2
 LOTS 1-3
 MULTI-FAMILY PROJECT
 PARKER, COLORADO

NOT FOR CONSTRUCTION

NO.	DATE	BY	DESCRIPTION
			COMMENT RESPONSES
04.19.21			COMMENT RESPONSES
05.27.21			AS BUILT ELEVATION
04.22.24			

DATE	DRAWN BY
PROJECT NO. 20013	CHECKED BY
BUILDING 3 COLORED ELEVATIONS	