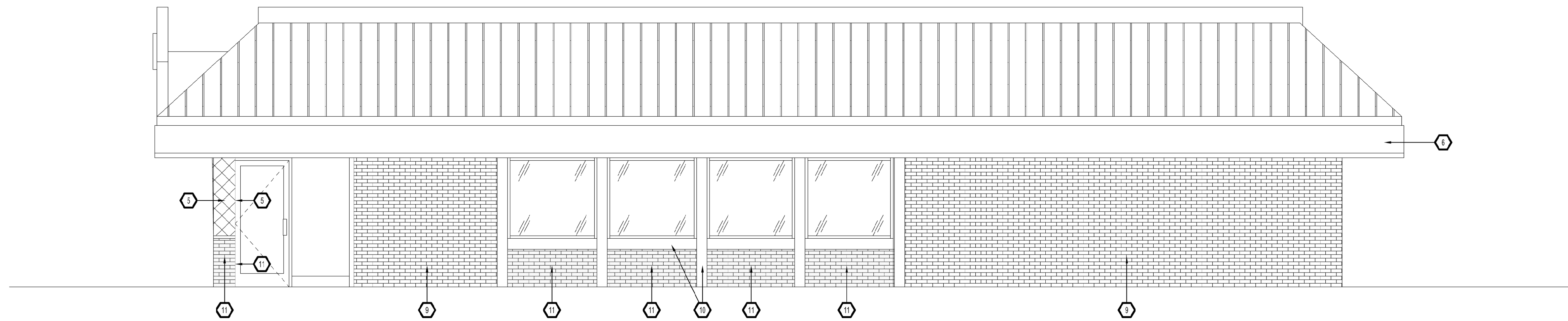
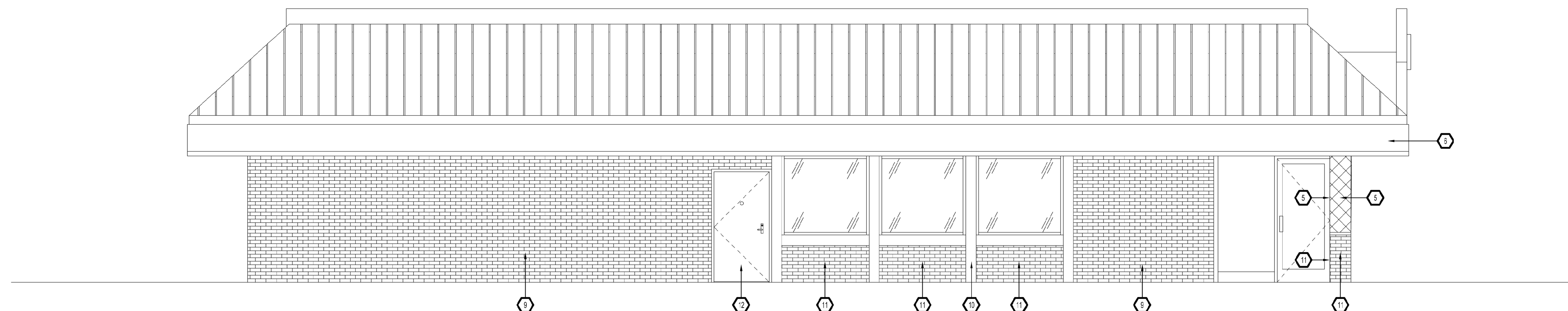


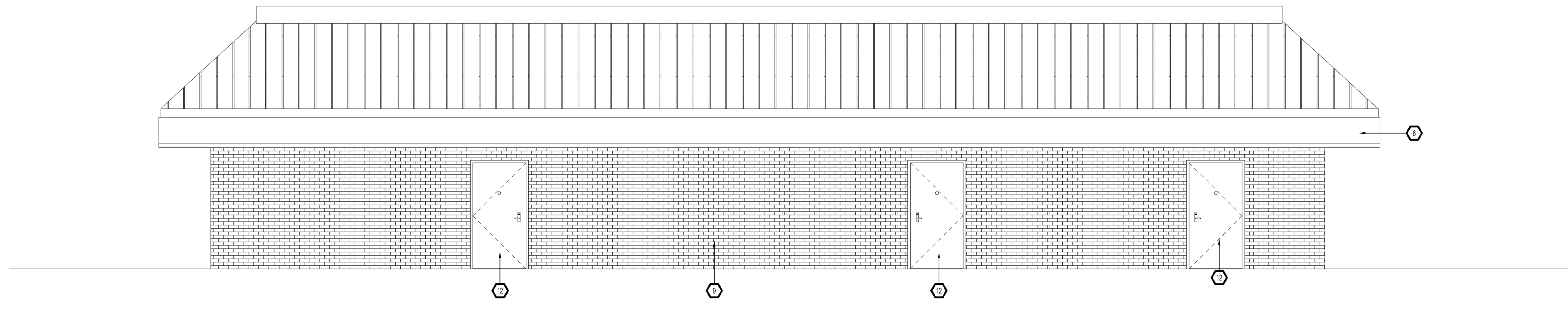
A B C D E F G H I J K L M N



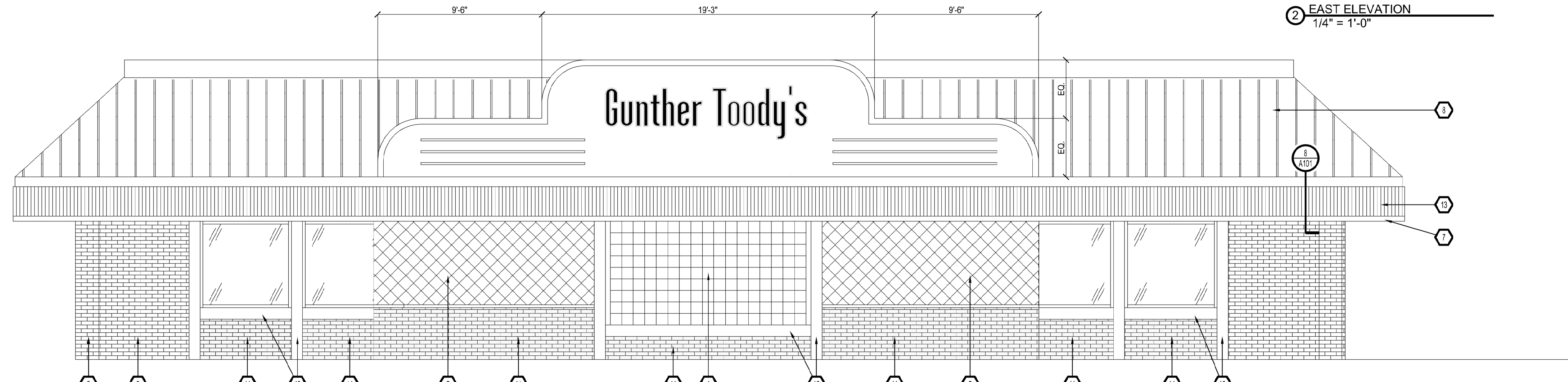
4 SOUTH ELEVATION
1/4" = 1'-0"



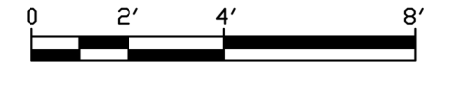
3 NORTH ELEVATION
1/4" = 1'-0"



2 EAST ELEVATION
1/4" = 1'-0"



1 WEST ELEVATION
1/4" = 1'-0"



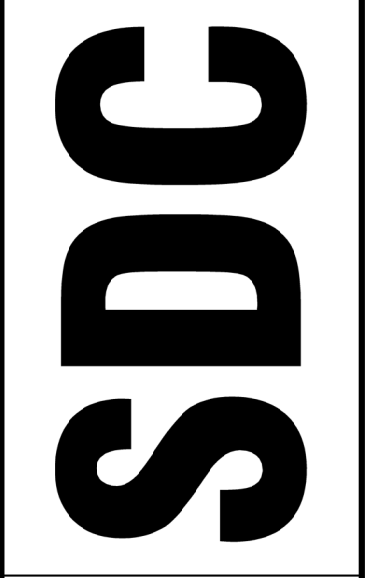
GENERAL NOTES

- A PATCH AND REPAIR ANY DAMAGED EIFS/STUCCO PRIOR TO COVERING WITH NEW FINISH OR REPAINTING THE BUILDING
- B PATCH AND REPAIR OR REPLACE ROTTEN FASCIA TRIM AND HORIZONTAL SOFFIT AS REQUIRED

KEYNOTES

- 1
- 2
- 3
- 4 NEW GLASS BLOCK IN EXISTING STOREFRONT WINDOW OPENING. NUBIO 6" X 6" X 3"
- 5 NEW QUILTED STAINLESS STEEL FINISH, OS-1, REFER TO DETAIL 7/A101
- 6 REPAIR DAMAGED STUCCO ON FASCIA AS REQUIRED, REPAINT EP-3, TYP. UNLESS NOTED OTHERWISE.
- 7 REPLACE EXISTING FASCIA TRIM AS REQUIRED. PAINT TRIM EP-4, TYP.
- 8 PAINT EXISTING METAL ROOF EP-1, TYP.
- 9 PAINT EXISTING BRICK WALL AND BRICK COLUMNS EP-1, TYP. UNLESS NOTED OTHERWISE
- 10 REPAINT EXISTING HORIZONTAL AND VERTICAL TRIM AT WINDOWS EP-4 AS REQUIRED, TYP.
- 11 PAINT EXISTING BRICK BELOW WINDOWS EP-3 UNLESS NOTED OTHERWISE, TYP.
- 12 PAINT HOLLOW METAL DOORS AND FRAMES THE SAME COLOR AS ADJACENT NEW WALL COLOR, TYP.
- 13 NEW POLISHED CORRUGATED METAL FINISH, ECM-1 ON FASCIA WITH FLASHING PER DETAIL

Gunther Toody's
Parker



**Structural Design
Collaborative LLC**

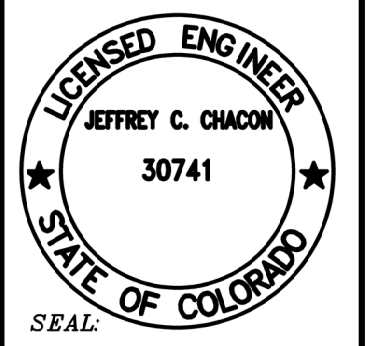
(303) 480-9501
(303) 480-9174 F

3350 Osceola St.
Suite 200
Denver, Colorado
80212

structurald@earthlink.net
sdccolorado.com

Gunther Toody's Remodel
19502 Parker Square Drive
Parker, Colorado

JOB: #23-052
DRAWN BY: JCC
CHECKED BY: JCC

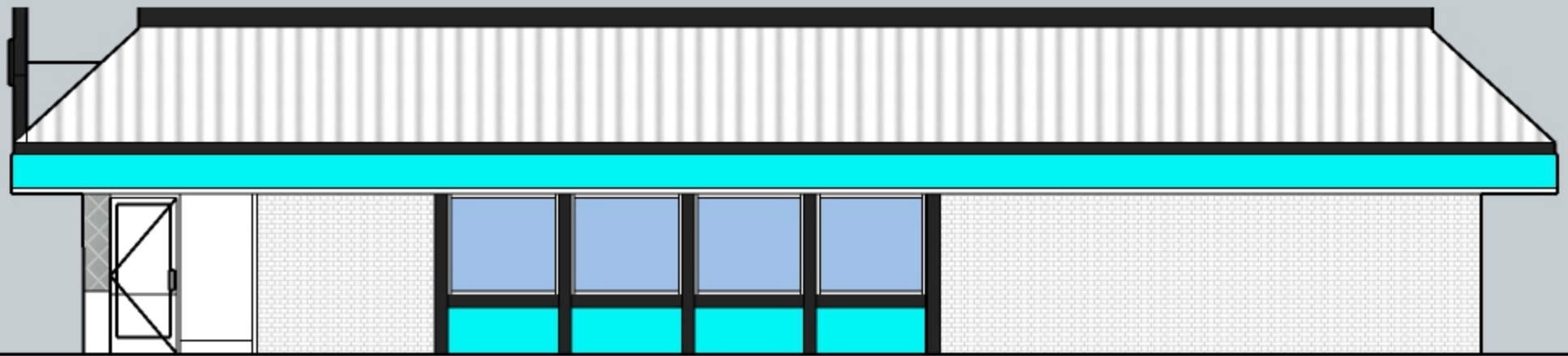


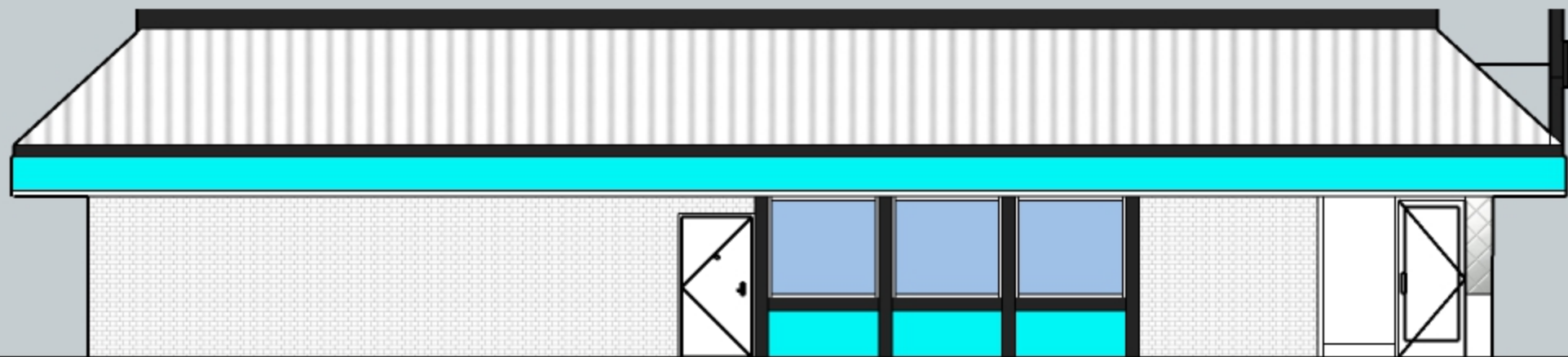
ALL DRAWING AND WRITTEN INFORMATION APPEARING HEREIN SHALL NOT BE REPRODUCED, COPIED, OR OTHERWISE USED WITHOUT THE WRITTEN CONSENT OF STRUCTURAL DESIGN COLLABORATIVE, LLC.

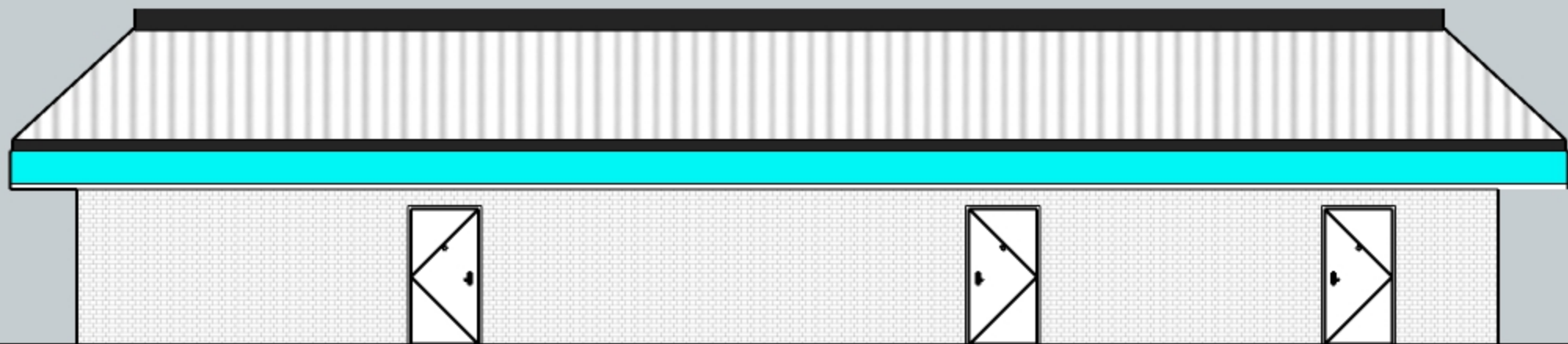
Revision Record:		
No.	Change	Date
1		4.29.24
2		
3		
4		
5		

Date: Dec 14, 2023
Sheet Title:
EXTERIOR ELEVATIONS

Sheet No. :
A103
Gunther Toody's
Parker









Gunther Toody's