

COMPARK VILLAGE SOUTH  
F1 AMD 2 - MULTIFAMILY  
SITE PLAN

LOT 2, COMPARK VILLAGE FILING NO. 1, AMEND NO. 2  
SOUTH HALF SECTION 6, TOWNSHIP 6 SOUTH, RANGE 66 WEST OF THE 6TH PRINCIPAL MERIDIAN  
TOWN OF PARKER, COUNTY OF DOUGLAS, STATE OF COLORADO

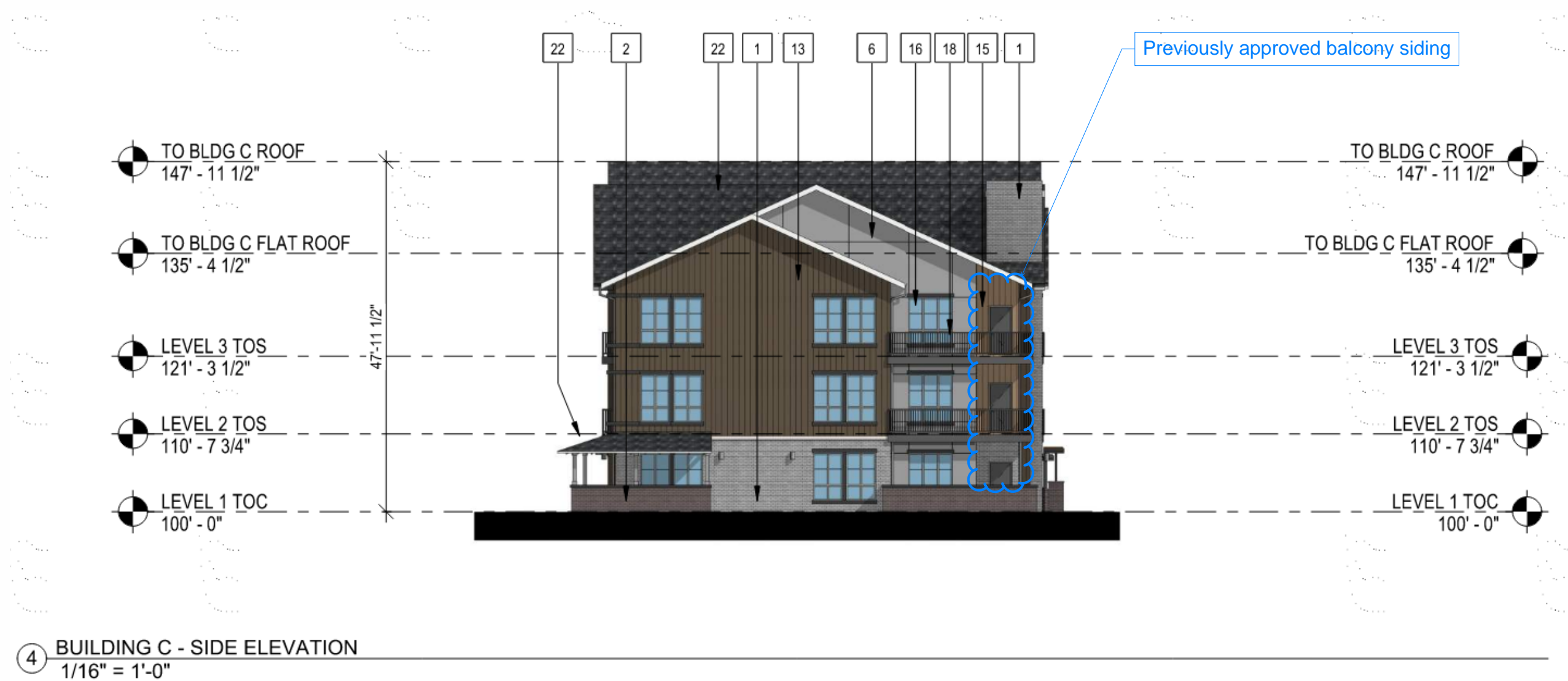
PROJECT NUMBER  
210512

DRAWN BY

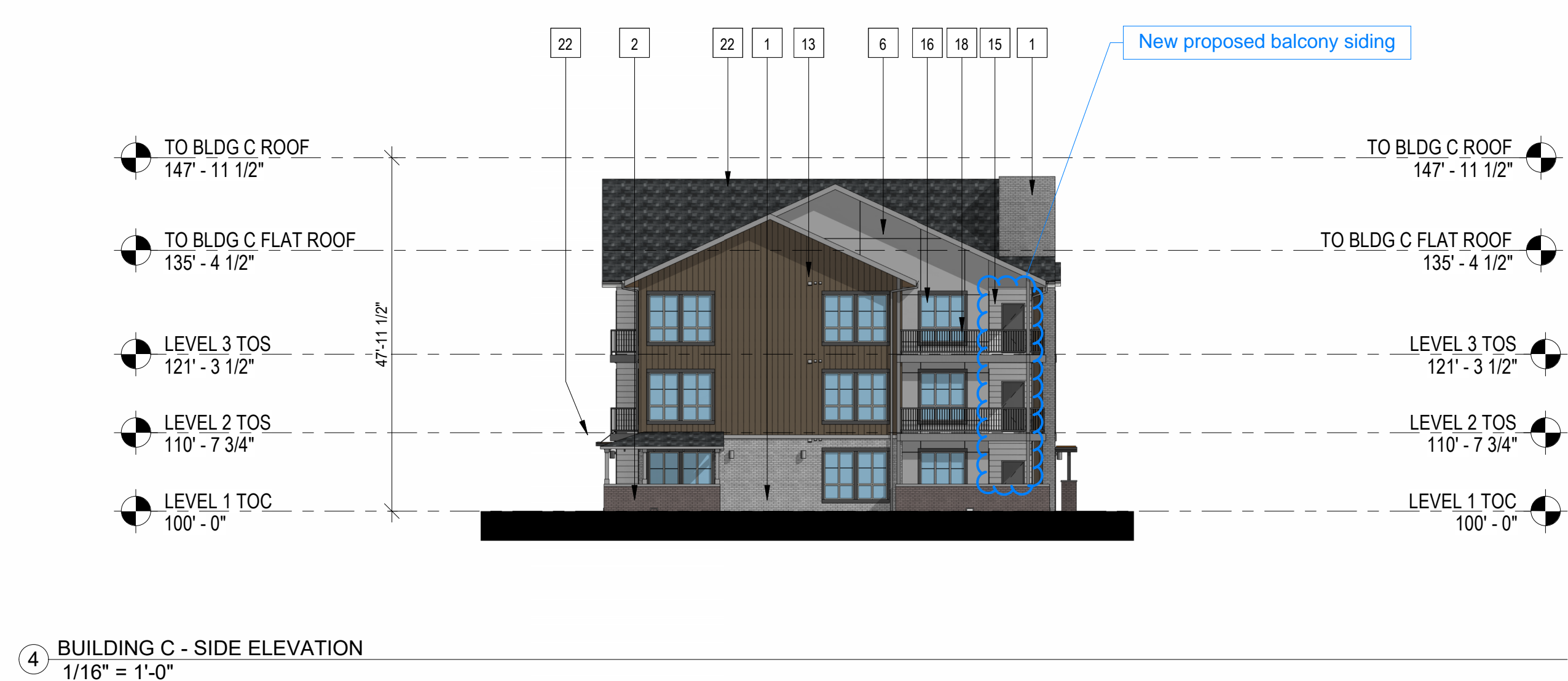
DATE  
10/02/2023



Architecture + Planning  
820 16th Street, Suite 500  
Denver, CO 80202  
ktgy.com  
303.825.6400



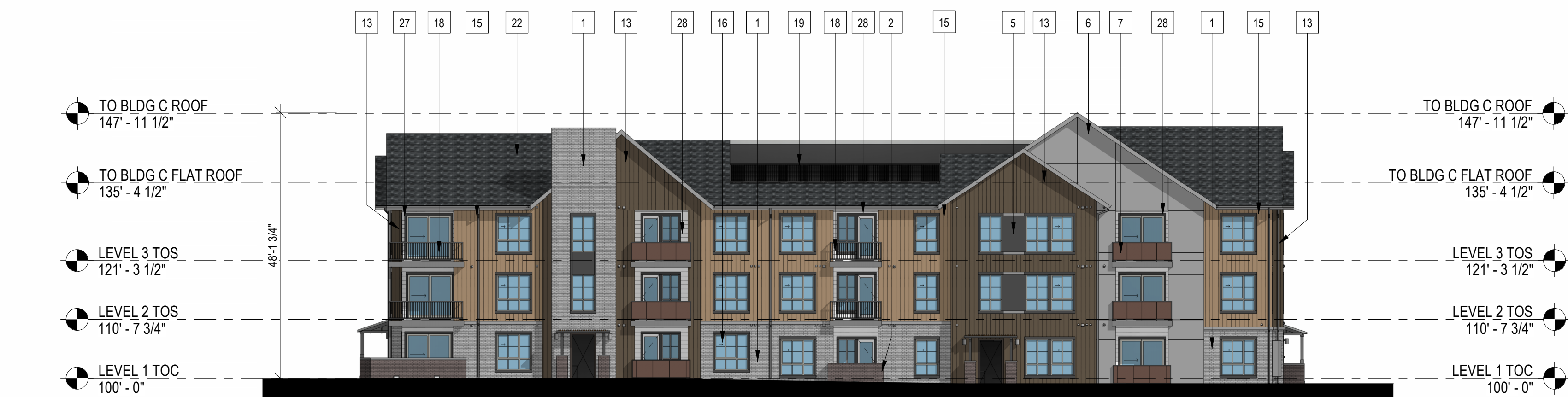
4 BUILDING C - SIDE ELEVATION  
1/16" = 1'-0"



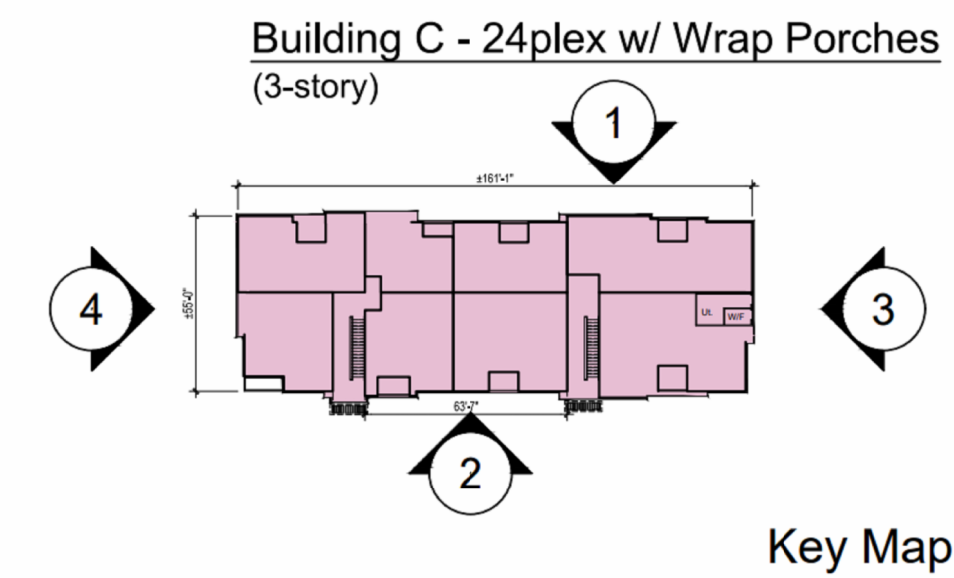
4 BUILDING C - SIDE ELEVATION  
1/16" = 1'-0"



2 BUILDING C - REAR ELEVATION  
1/16" = 1'-0"



1 BUILDING C - FRONT ELEVATION  
1/16" = 1'-0"



#	KEYNOTES - SIP
1	BRICK - RUNNING - COLOR 1
2	BRICK - RUNNING - COLOR 2
3	FIBER CEMENT PANELING - COLOR 1
4	FIBER CEMENT PANELING - COLOR 2
5	FIBER CEMENT PANELING - COLOR 3
6	FIBER CEMENT PANELING - COLOR 4
7	METAL PANEL - COLOR 1
8	METAL PANEL - COLOR 2
9	BOARD AND BATTEN - COLOR 1 (BLUE)
10	BOARD AND BATTEN - COLOR 2
11	VERTICAL SIDING - COLOR 1
12	VERTICAL SIDING - COLOR 2
13	VERTICAL SIDING - COLOR 3
14	VERTICAL SIDING - COLOR 4
15	VERTICAL SIDING - COLOR 5
16	VINYL WINDOW
18	METAL RAILING
19	MECHANICAL SCREEN - 58% OPEN WIRE MESH - COLOR 1 (BLACK)
20	STOREFRONT
21	COLUMN
22	ASPHALT SHINGLE ROOFING
23	BOARD & BATTEN - COLOR 3 - DARK GREY
24	STONE - COLOR 1
25	EXTERIOR LIGHT FIXTURE
26	HORIZONTAL SIDING - COLOR 1
27	HORIZONTAL SIDING - COLOR 2
28	HORIZONTAL SIDING - COLOR 3
29	HORIZONTAL SIDING - COLOR 4
30	HORIZONTAL SIDING - COLOR 5
32	DOWNSPOUT

NOTES:  
1. SEE MATERIAL BOARDS FOR MORE INFORMATION.  
2. SEE SITE PLAN FOR DIMENSIONS BETWEEN ENTRIES.  
3. GROUND FLOOR TRANSPARENCY TO BE MIN. OF 25% MEASURED AS A PERCENTAGE OF GLAZING AT THE BASE OF THE BUILDING  
4. UPPER FLOOR TRANSPARENCY TO BE MIN. OF 15% GLAZING MEASURED AS A PERCENTAGE OF GLAZING ON THE MIDDLE OF THE BUILDING.  
5. TRIM AROUND WINDOWS SHALL BE A MINIMUM OF THREE AND ONE-HALF (3 1/2) INCHES WIDE, AND TRIM AROUND DOORS SHOULD BE A MINIMUM OF TWO (2) INCHES WIDE.

PREPARED FOR CENTURY COMMUNITIES



PROJECT

COMPARK VILLAGE SOUTH

TOWN OF PARKER, COUNTY OF DOUGLAS, COLORADO 80134

SHEET TITLE

BUILDING C ELEVATIONS

SHEET NUMBER

57

COMPARK VILLAGE SOUTH  
F1 AMD 2 - MULTIFAMILY  
SITE PLAN

LOT 2, COMPARK VILLAGE FILING NO. 1, AMEND NO. 2  
SOUTH HALF SECTION 6, TOWNSHIP 6 SOUTH, RANGE 66 WEST OF THE 6TH PRINCIPAL MERIDIAN  
TOWN OF PARKER, COUNTY OF DOUGLAS, STATE OF COLORADO

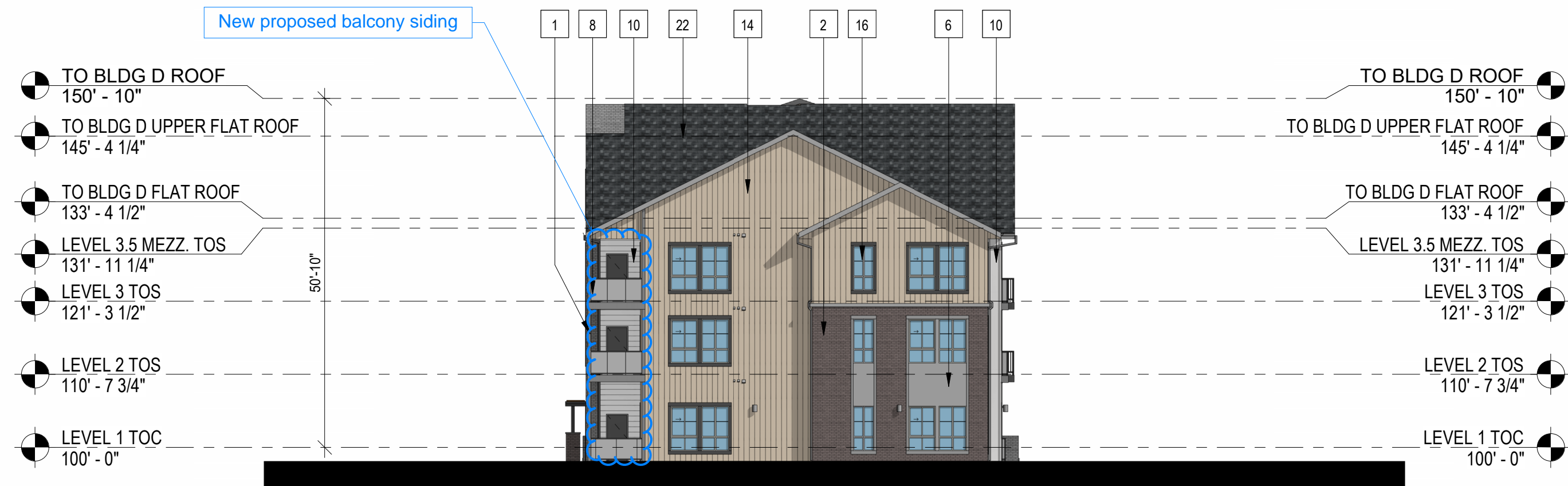
PROJECT NUMBER  
210512

DRAWN BY

DATE  
10/02/2022



Architecture + Planning  
820 16th Street, Suite 500  
Denver, CO 80202  
ktgy.com  
303.825.6400



3 BUILDING D - SIDE ELEVATION  
1/16" = 1'-0"



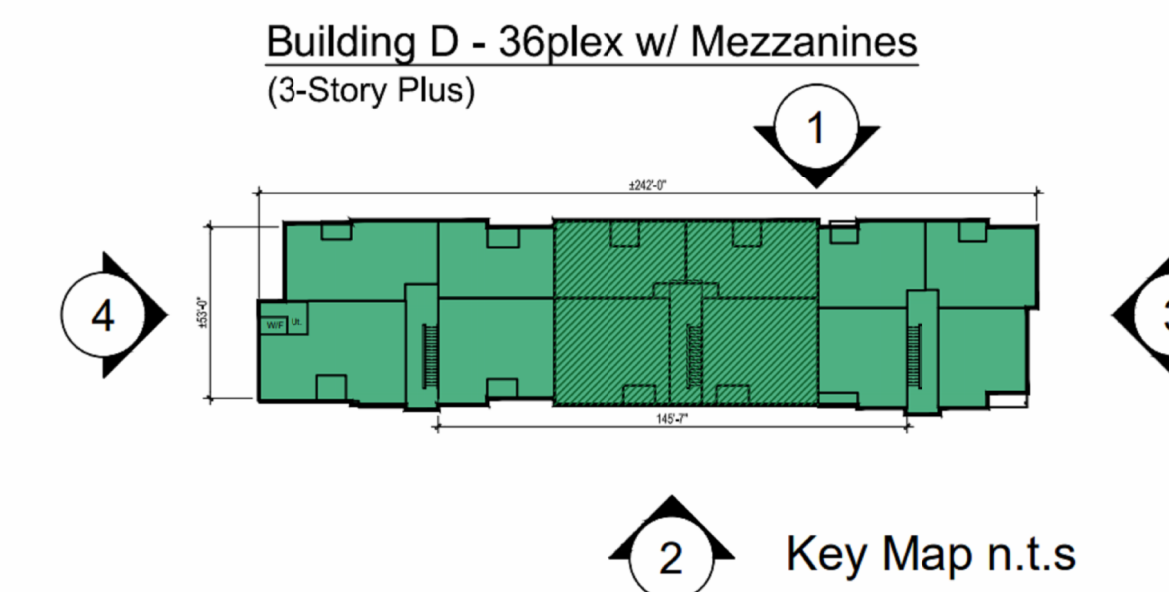
3 BUILDING D - SIDE ELEVATION  
1/16" = 1'-0"



1 BUILDING D - FRONT ELEVATION  
1/16" = 1'-0"



1 BUILDING D - FRONT ELEVATION  
1/16" = 1'-0"



KEYNOTES - SIP

- | #  | KEYNOTES - SIP   |
|----|--|
| 1  | BRICK - RUNNING - COLOR 1                                |
| 2  | BRICK - RUNNING - COLOR 2                                |
| 3  | FIBER CEMENT PANELING - COLOR 1                          |
| 4  | FIBER CEMENT PANELING - COLOR 2                          |
| 5  | FIBER CEMENT PANELING - COLOR 3                          |
| 6  | FIBER CEMENT PANELING - COLOR 4                          |
| 7  | METAL PANEL - COLOR 1                                    |
| 8  | METAL PANEL - COLOR 2                                    |
| 9  | BOARD AND BATTEN - COLOR 1 (BLUE)                        |
| 10 | BOARD AND BATTEN - COLOR 2                               |
| 11 | VERTICAL SIDING - COLOR 1                                |
| 12 | VERTICAL SIDING - COLOR 2                                |
| 13 | VERTICAL SIDING - COLOR 3                                |
| 14 | VERTICAL SIDING - COLOR 4                                |
| 15 | VERTICAL SIDING - COLOR 5                                |
| 16 | VINYL WINDOW   |
| 18 | METAL RAILING  |
| 19 | MECHANICAL SCREEN - 58% OPEN WIRE MESH - COLOR 1 (BLACK) |
| 20 | STOREFRONT   |
| 21 | COLUMN   |
| 22 | ASPHALT SHINGLE ROOFING                                  |
| 23 | BOARD & BATTEN - COLOR 3 - DARK GREY                     |
| 24 | STONE - COLOR 1  |
| 25 | EXTERIOR LIGHT FIXTURE                                   |
| 26 | HORIZONTAL SIDING - COLOR 1                              |
| 27 | HORIZONTAL SIDING - COLOR 2                              |
| 28 | HORIZONTAL SIDING - COLOR 3                              |
| 29 | HORIZONTAL SIDING - COLOR 4                              |
| 30 | HORIZONTAL SIDING - COLOR 5                              |
| 32 | DOWNSPOUT  |

- NOTES:  
1. SEE MATERIAL BOARDS FOR MORE INFORMATION.  
2. SEE SITE PLAN FOR DIMENSIONS BETWEEN ENTRIES.  
3. GROUND FLOOR TRANSPARENCY TO BE MIN. OF 25% MEASURED AS A PERCENTAGE OF GLAZING AT THE BASE OF THE BUILDING.  
4. UPPER FLOOR TRANSPARENCY TO BE MIN. OF 15% GLAZING MEASURED AS A PERCENTAGE OF GLAZING ON THE MIDDLE OF THE BUILDING.  
5. TRIM AROUND WINDOWS SHALL BE A MINIMUM OF THREE AND ONE-HALF (3 1/2) INCHES WIDE, AND TRIM AROUND DOORS SHOULD BE A MINIMUM OF TWO (2) INCHES WIDE.

PREPARED FOR CENTURY COMMUNITIES



PROJECT

COMPARK VILLAGE SOUTH

TOWN OF PARKER, COUNTY OF DOUGLAS, COLORADO 80134

SHEET TITLE

BUILDING D ELEVATIONS

SHEET NUMBER