

OVERVIEW	
Lumen Package (lm)	3,000 - 22,500
Wattage Range (W)	35 - 152
Efficiency Range (LPW)	114 - 156
Weight lbs (kg)	23 (10.4)

**QUICK LINKS**

Ordering Guide Performance Photometrics Dimensions

- FEATURES & SPECIFICATIONS**
- Construction**
- Features an ultra-slim 1/16" profile die-cast housing, with flat clear or diffused tempered glass lens. Lens is water-resistant, sealed and IP66 rated. Integral designed heat sink does not trap dirt and grime, ensuring cool running performance over the life of the fixture.
  - Standard color is white and is finished with UV-resistant polyester powder coat process. DuraGrip withstands extreme weather changes without cracking or peeling.
  - Luminaire assembly incorporates a pressure stabilizing vent breather to prevent seal fatigue and failure.
- Optical System**
- Features an array of select, mid-power, high brightness, high efficiency LEDs (3000K, 4000K, 5000K color temperature, 80 CRI channel).
  - Choice of symmetric or asymmetric distribution. Asymmetric provides a wider distribution pattern. Optional symmetric with diffused lens also available.
  - Forward Throw distribution provides an industry leading unique distribution pattern that illuminates the area under the gas canopy and beyond. The forward throw optic directs the light to the interior from the gas canopy eliminating the need for supplemental floodlights and extensive perimeter lighting.
  - Diffuse lens available as an option to soften brightness of the luminaires.
  - Six Lumen Packages (5,000, 8,000, 10,000, 13,000, 18,000 and 22,000 Lumens).
- Electrical**
- High performance factory programmable driver features over-voltage, under-voltage, short-circuit and over-temperature protection with integral 6A surge protection that meets IEEE C62.4.2 and ANSI C82.77-5 Location Category C Low standards. Additional field replaceable 10kV surge protection device meets a minimum Category C line operation (per ANSI/IEEE C62.41.2). Custom lumen and wattage packages available.
  - Die-cast aluminum vent location rated driver/electrical enclosure is sealed about canopy deck to prevent water entry. Provides easy "knock-out" connection of primary wiring and acts as the primary heat sink ensuring cool operation of internal components for longer life. Seals to optical housing via one-piece molded silicone gasket.
  - Universal voltage power supply, 120-277 VAC, 50/60 Hz and 347-480 VAC, 50/60 HZ, 3-phase.
  - 40°C to 55°C (-40°F to 131°F) ambient operating temperature. (Values based on lumen package and mounting style see performance data for specifics.)
  - Minimum 60,000 to 100,000 hours depending upon the ambient temperature of the installation location (see performance data for specifics.)
- Hazardous Location**
- Designed for lighter than air fuel applications. Product is suitable for Class 1 Division 2 only when properly installed per LSI installation instructions. See lsi.com for specific guidance. Not available on 10kV surge protection device.
  - One-person installation.
  - Installs in a 12" or 16" deck gap. Deck penetration consists of a 4" hole. Simplifying installation and water sealing. Unit is designed to retrofit into existing Scottsdale (C7) hole as well as openings for Encore and Encore Top Access and to reconnect wiring for the SC/DCA without having to relocate the conduit.
  - Battery panels are available for existing Encores as well as kits for recessed and 2x2 installations (see separate spec sheets).
  - Support brackets are provided standard to prevent sagging of deck.
- Warranty**
- LSI luminaires carry a 5-year limited warranty. Refer to <https://www.lsi.com/resources/forms/conditions/warranty/> for more information.
- Listings**
- UL and ETL listed to UL 1008, UL 8750 and other U.S. and international safety standards. Suitable for wet locations.
  - Designated Consensus® DLC5 Premium qualified product, not all versions of this product may be the DLC5 Premium qualified. Please check the DLC5 Qualified Products List at [www.dlc.com](https://www.dlc.com) by country which version are qualified.
  - Meets Key American Act requirements.
  - IDA compliant with 3000K or lower color temperature.



**Specifications**

EPA (E1607): 0.57 ft<sup>2</sup> (0.05 m<sup>2</sup>)

Length: 21.8" (55.4 cm) (SPA mount)

Width: 13.3" (33.8 cm)

Height: 3.0" (7.6 cm) Main Body  
7.2" (18.4 cm) Arm  
(SPA mount): 22.0 lbs (10.0 kg)

**Introduction**

The new RSX LED Area family delivers maximum value by providing significant energy savings, long life and outstanding photometric performance at an affordable price. The RSX1 delivers 7,000 to 17,000 lumens allowing it to replace 70W to 400W HED luminaires.

The RSX features an integral universal mounting mechanism that allows the luminaire to be mounted on most existing drill hole patterns. This "no-drill" solution provides significant labor savings. An easy-access door on the bottom of mounting arm allows for wiring without opening the electrical compartment. A mast arm adaptor, adjustable integral diffuser and other mounting configurations are available.

**Ordering Information**

EXAMPLE: RSX1 LED P4 40K R3 MVL2 SPA DBXDO

Series	Package	Color Temperature	Wattage	Mounting
RSX1 LED	P1	30K	3000	SPA
	P2	40K	4000	SPA
	P3	50K	5000	SPA
	P4	30K	3000	SPA
	P5	40K	4000	SPA
	P6	50K	5000	SPA

**Shipped Installed**

Series	Package	Color Temperature	Wattage	Mounting
RSX1 LED	P1	30K	3000	SPA
	P2	40K	4000	SPA
	P3	50K	5000	SPA
	P4	30K	3000	SPA
	P5	40K	4000	SPA
	P6	50K	5000	SPA

LSI Luminaires, Inc. 10000 Alliance Blvd. CHannah, OH 45242 • (513) 372-3300 • [www.lsi.com](http://www.lsi.com)



**Specifications**

Depth (D1): 9.25"

Depth (D2): 7.5"

Height: 5"

Width: 14"

Weight: 11 lbs (without optional)

**ARC LED Family Overview**

Luminaire	Standard/ET	Case/ET	ET	ET	ET	ET	ET
ARC1 LED	4W	—	1.00	1.00	1.00	4.00	6.00
ARC2 LED	4W	4W	1.00	2.00	1.00	4.00	6.00

**Ordering Information**

EXAMPLE: ARC2 LED P2 40K MVL02 PE DBXDO

Series	Package	Color Temperature	Wattage	Options	Finish
ARC2 LED	P1	30K	3000	MV01	DBX0
	P2	40K	4000	347	DBX0
	P3	50K	5000	PE	DBX0
	P4	30K	3000	—	DBX0
	P5	40K	4000	—	DBX0
	P6	50K	5000	—	DBX0

**Accessories**

1 277V not available with DBX0.  
2 347V not available with DBX0.

LITHONIA LIGHTING COMMERCIAL OUTDOOR One Lithonia Way • Cumers, Georgia 30012 • Phone: 1-800-765-SERV (5738) • [www.lithonia.com](http://www.lithonia.com)



**Low-Profile, Driverless Linkable IP67 LED Linear Luminaire**

- Product Features**
- Maintenance-Free Driverless Design
  - Connects directly to AC line voltage without an LED driver or electronic capacitor, for extreme reliability and lifetime. Requires zero maintenance.
  - Easy to Install Quick-Connect Cabling
  - Component push-and-click connectors and cabling make GPX Series fixtures easy to install and dislay chain.
  - Coextruded Copolyester/Aluminum Housing
  - Our patented process combines copolyester and aluminum together, with no seals or gaskets. The result is a single piece enclosure with excellent heat-dissipation characteristics for long lifetime.
  - Superior Chemical & UV Resistance
  - Seamless polymer outer shell provides IP67 ingress protection and is specialized for superior chemical resistance. An additional protective coating is available which incorporates a UV inhibitor and UV blocker for outdoor applications.

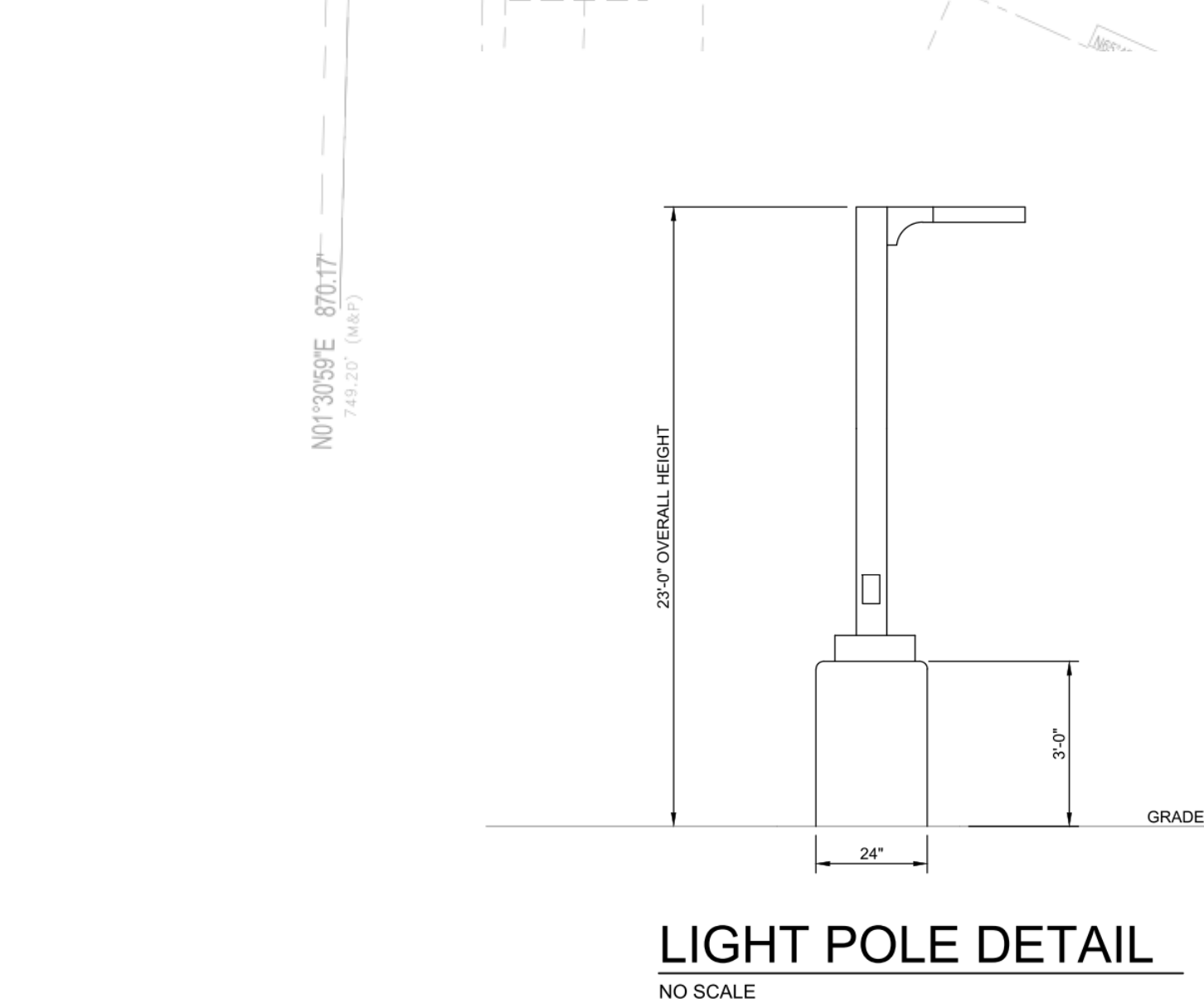
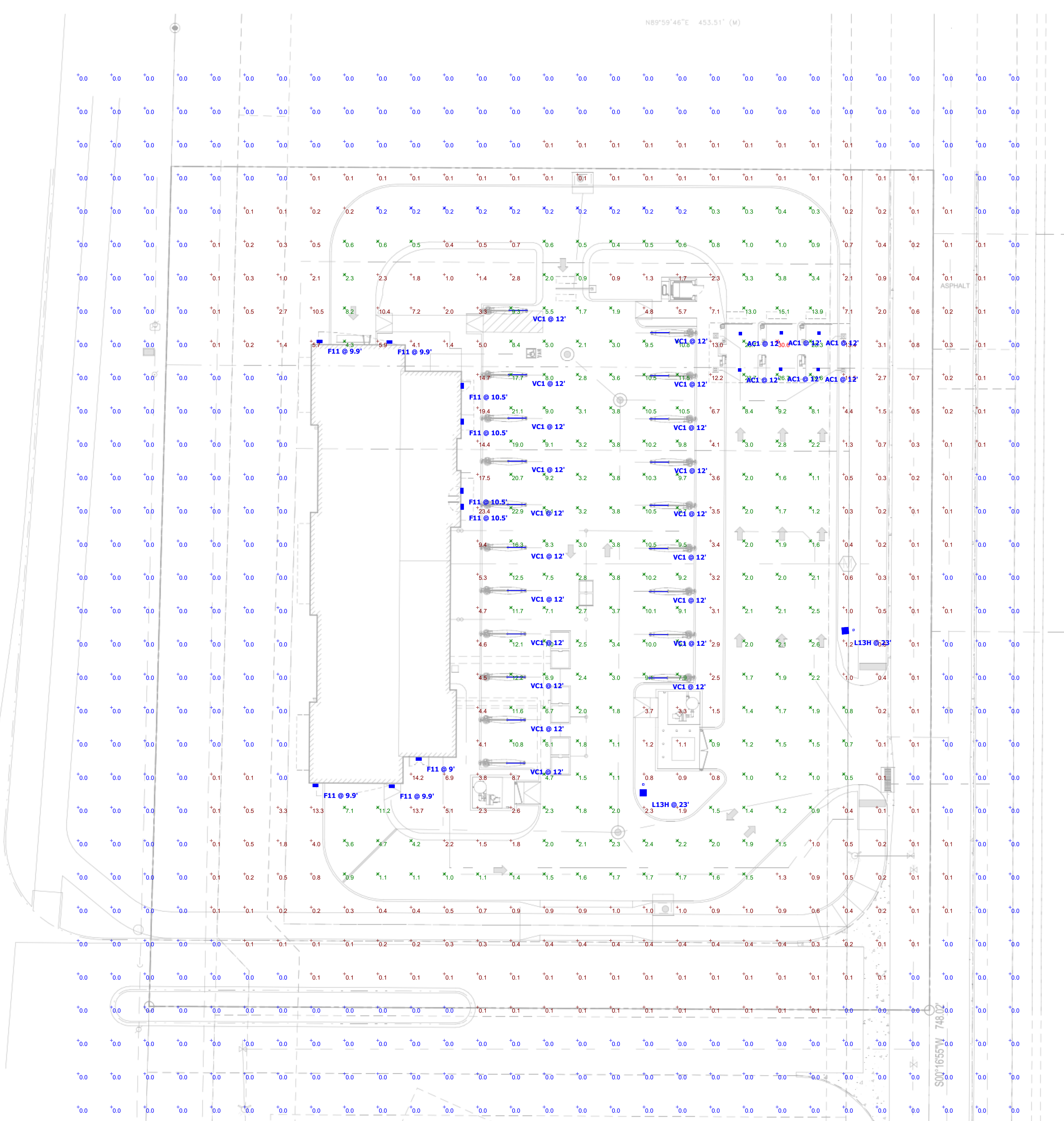
**Ordering Information**

Series	Length	Current Output	Color Temp.	Lumen Diffusion	UV Protection	Through Mount	Wattage
GPX	2	SO	30K	Blank	Blank	Blank	120V
	4	HO*	40K*	OC	OC	OC	277V
	6	HO*	40K*	OC	OC	OC	277V
	8	HO*	40K*	OC	OC	OC	277V

**Power & Connection Accessories**

Cable	Type	Length	Wire	Mounting Hardware	Description
GPX-AMP-1	Jumper	18"	18 AWG SLTW	GPX-MNT-1	Non-Magnetic Quick Latch
GPX-AMP-2	Jumper	24"	18 AWG SLTW	GPX-MNT-2	Non-Magnetic Quick Latch
GPX-AMP-4	Jumper	48"	18 AWG SLTW	GPX-MNT-4	Non-Magnetic Quick Latch
GPX-AMP-8	Jumper	81"	18 AWG SLTW	GPX-MNT-8	Non-Magnetic Quick Latch
GPX-DR-10	Leader Cable	10'	18 AWG SLTW	GPX-MNT-10	Non-Magnetic Quick Latch
GPX-DR-25	Leader Cable	25'	18 AWG SLTW	GPX-MNT-25	Non-Magnetic Quick Latch

**STRONG. SIMPLE. COMPACT.**

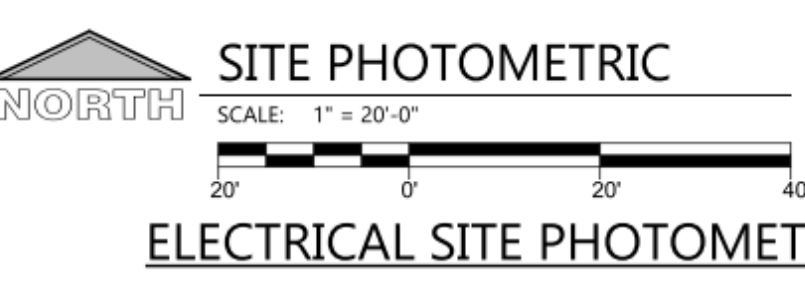


**Schedule**

Symbol	Label	Quantity	Manufacturer	Catalog Number	Description	Number Lumens Per Lamp	Light Loss Factor	Wattage	Wattage
F11	F11	9	Lithonia Lighting	ARC2 LED P4 40K	ARC2 LED WITH P4 - PERFORMANCE PACKAGE, 4000K	1	4124	1	29,4252
AC1	AC1	6	LSI INDUSTRIES, INC.	CRUS-SC-SLW-50	VACUUM CANOPY ARCH LIGHT	1	5954	1	38
VC1	VC1	20	G&G Industrial Lighting	GPX6-SO-40K-GC	VACUUM CANOPY ARCH LIGHT	1	3600	1	27
L13H	L13H	2	Lithonia Lighting	RSX1 LED P2 40K R3 HS	RSX LED Area Luminaire Size 1 P2 Lumen Package 4000K CCT Type R3 Distribution with HS shield	1	6909	1	72.95
A	A	0	Lithonia Lighting	RSX1 LED P2 40K R2 HS	RSX LED Area Luminaire Size 1 P2 Lumen Package 4000K CCT Type R2 Distribution with HS shield	1	7469	1	72.95

**Statistics**

Description	Symbol	Avg	Max	Min	Max/Min	Avg/Min
Calc Zone #2	+	1.7 fc	30.6 fc	0.0 fc	N/A	N/A
Stat Zone #1	X	5.2 fc	30.6 fc	0.2 fc	153.0:1	26.0:1



PROJECT INFORMATION

PROPOSED CAR WASH FOR:  
**MISTER CAR WASH (CO 1452 STROH)**  
S PARKER RD • PARKER, CO 80134

(130L - V1.2 - ZONE 2)

PROFESSIONAL SEAL

PRELIMINARY DATES

JULY 23, 2024

NOT FOR CONSTRUCTION

JOB NUMBER  
230362400

SHEET NUMBER

E1.1





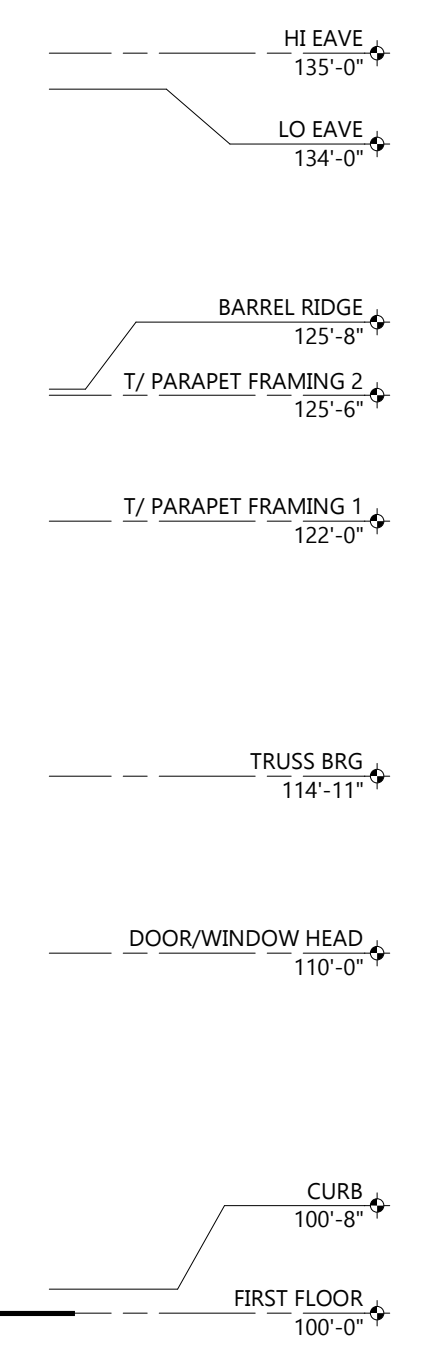


**OFFICE ELEVATION**  
(NOT VISIBLE FROM S PARKER RD)

**MATERIALS:**  
893 SF MASONRY  
843 SF ALUM. BATTENS  
984 SF EPS  
456 SF METAL PANEL  
142 SF STOREFRONT  
48 SF HM DOOR  
185 SF MISC TRIM, STONE, CONCRETE, ETC.

3,561 SF TOTAL

EPS REQUIRED TO BE LESS THAN 30% OF FACADE.  
EPS = 28% SF



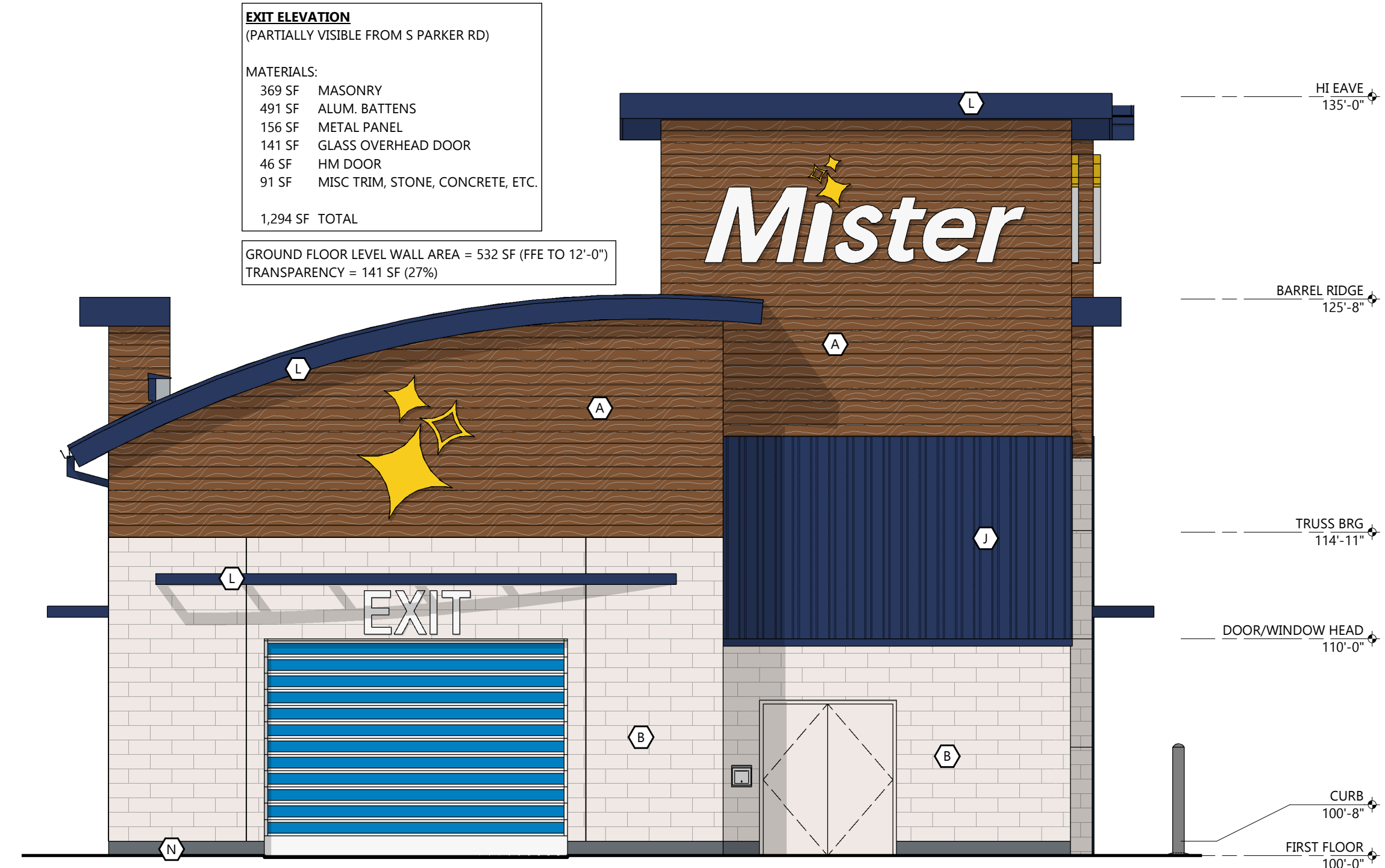
**OFFICE ELEVATION**  
SCALE: 3/16" = 1'-0"

**EXTERIOR MATERIAL KEY**

	<b>PREFINISHED ALUMINUM BATTENS</b> MFR: LUMABUILT STYLE: MOSAIC 1/4" BATTENS COLOR: HAZELNUT BROWN
	<b>THRU WALL MASONRY</b> MFR: CORDOVA STONE STYLE: STRUCTURAL BLOCK (8"D x 8"H x 24"L) FULL DEPTH BLOCK (4"D x 8"H x 24"L) COLOR: ALABASTER WHITE w/ MATCHING MORTAR JOINT
	<b>EPS</b> TEXTURE: SAND COLOR: PT-6 (MORNING FOG)
	<b>EPS</b> TEXTURE: SAND COLOR: PT-3 (WALL STREET)
	<b>EPS</b> TEXTURE: SAND COLOR: PT-9 (IN THE NAVY)
	<b>SINGLE WYTHE CMU</b> TEXTURE: SPLIT FACE INTEGRAL COLOR TO MATCH PT-6 (MORNING FOG)
	<b>SINGLE WYTHE CMU</b> TEXTURE: SPLIT FAC INTEGRAL COLOR TO MATCH PT-3 (WALLSTREET)
	<b>PRECAST STONE SILL</b> COLOR: LIMESTONE
	<b>PREFINISHED ALUMINUM WALL PANEL</b> MFR: CTMRS (OR EQUAL) COLOR: PT-9 (IN THE NAVY) STYLE: CT-7.2 PANEL
	<b>PREFINISHED STANDING SEAM METAL ROOF PANEL</b> MFR: CTMRS (OR EQUAL) STYLE: LARGE BATTEN 24 GA COLOR: PT-9 (IN THE NAVY)
	<b>PREFINISHED METAL TRIM AND ACCESSORIES</b> MFR: CTMRS (OR EQUAL) COLOR: PT-9 (IN THE NAVY)
	<b>ALUMINUM STOREFRONT SYSTEM</b> GLAZING: CLEAR FRAME: CLEAR ANODIZED
	<b>CONCRETE CURB</b> TEXTURE: HAND RUB COLOR TO MATCH PT-3
	<b>TREX DECK BOARD</b> COLOR TO MATCH PT-3

**GENERAL NOTES**

• ALL SIGNAGE SHOWN FOR INFORMATIONAL PURPOSES ONLY. ALL ADVERTISING SIGNAGE SUBJECT TO SEPARATE SIGN PERMIT SUBMITTAL AND APPROVAL.

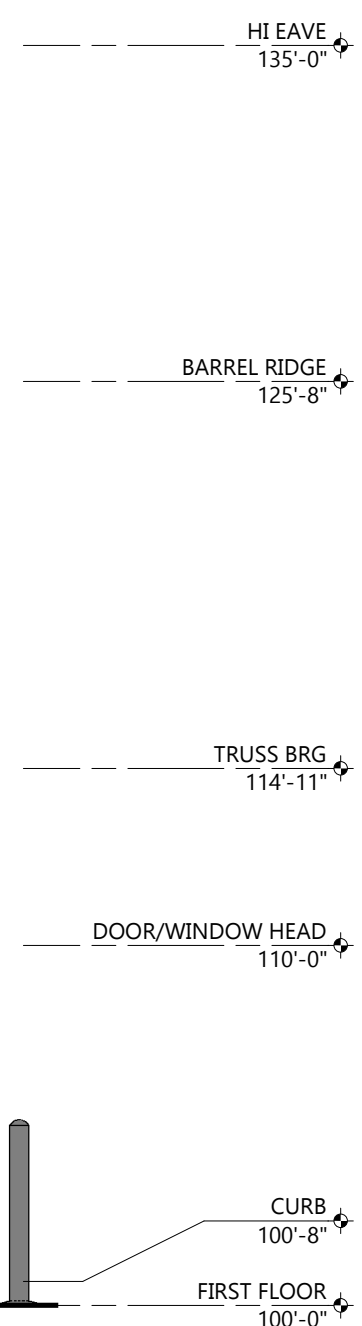


**EXIT ELEVATION**  
(PARTIALLY VISIBLE FROM S PARKER RD)

**MATERIALS:**  
369 SF MASONRY  
491 SF ALUM. BATTENS  
156 SF METAL PANEL  
141 SF GLASS OVERHEAD DOOR  
46 SF HM DOOR  
91 SF MISC TRIM, STONE, CONCRETE, ETC.

1,294 SF TOTAL

GROUND FLOOR LEVEL WALL AREA = 532 SF (FFE TO 12'-0")  
TRANSPARENCY = 141 SF (27%)



**EXIT ELEVATION**  
SCALE: 3/16" = 1'-0"

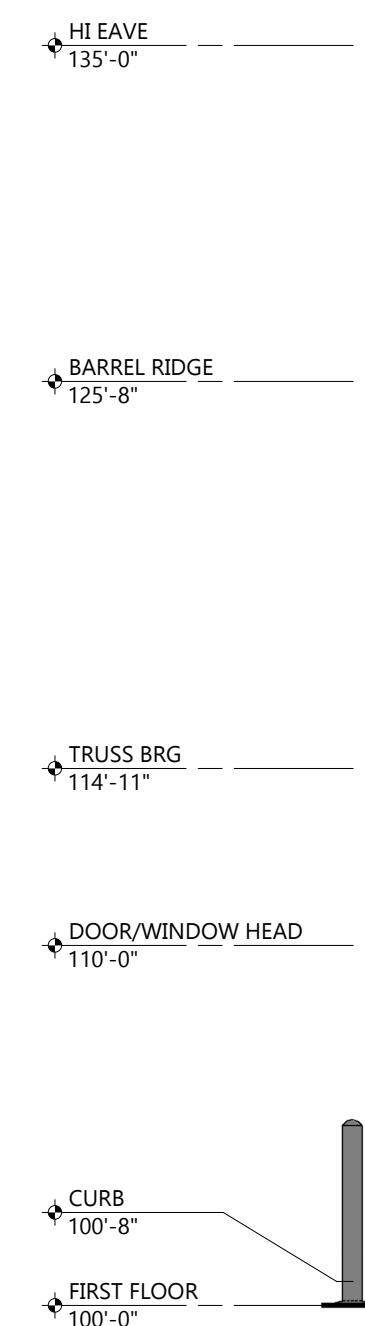


**ENTRANCE ELEVATION**  
(PARTIALLY VISIBLE FROM S PARKER RD)

**MATERIALS:**  
270 SF MASONRY  
507 SF ALUM. BATTENS  
191 SF METAL PANEL  
166 SF GLASS OVERHEAD DOOR  
105 SF STOREFRONT  
83 SF MISC TRIM, STONE, CONCRETE, ETC.

1,322 SF TOTAL

GROUND FLOOR LEVEL WALL AREA = 546 SF (FFE TO 12'-0")  
TRANSPARENCY = 270 SF (49%)



**ENTRANCE ELEVATION**  
SCALE: 3/16" = 1'-0"

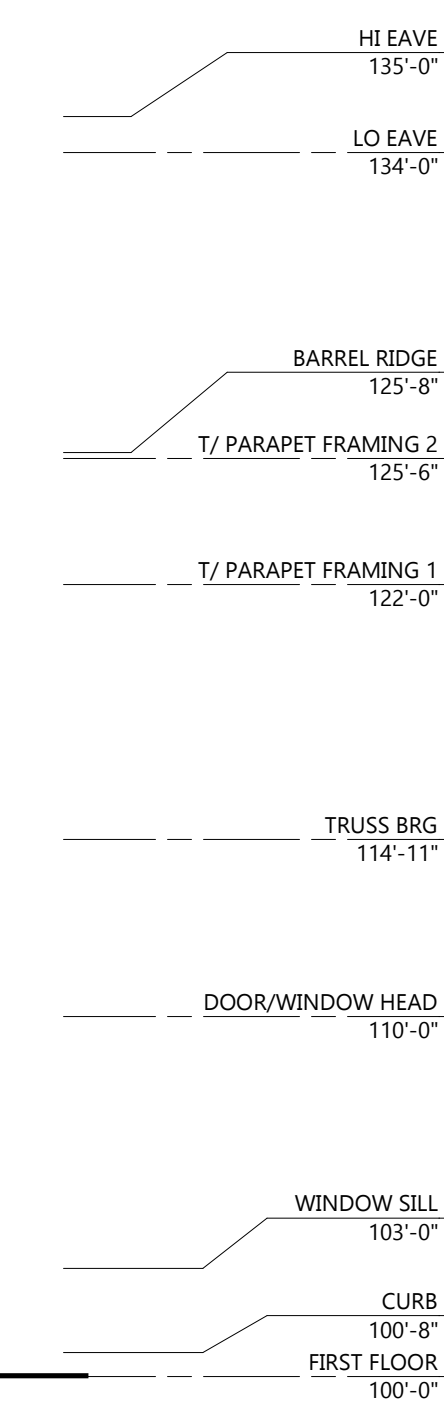


**TUNNEL ELEVATION**  
(VISIBLE FROM S PARKER RD)

**MATERIALS:**  
874 SF MASONRY  
336 SF ALUM. BATTENS  
807 SF SPLIT FACE CMU  
95 SF EPS  
523 SF STOREFRONT  
195 SF MISC TRIM, STONE, CONCRETE, ETC.

2,830 SF TOTAL

GROUND FLOOR LEVEL WALL AREA = 1588 SF (FFE TO 12'-0")  
TRANSPARENCY = 523 SF (33%)



**TUNNEL ELEVATION**  
SCALE: 3/16" = 1'-0"

**PROJECT INFORMATION**

PROPOSED CAR WASH FOR:  
**MISTER CAR WASH (CO 1452 STROH)**  
S PARKER RD • PARKER, CO 80134

(130L - V1.2 - ZONE 2)

PROFESSIONAL SEAL

**PRELIMINARY DATES**  
JULY 23, 2024

**NOT FOR CONSTRUCTION**

**JOB NUMBER**  
230362400

**SHEET NUMBER**

**PRE-1**

© 2024 EXCEL ENGINEERING, INC. ALL RIGHTS RESERVED. EXCEL ENGINEERING, INC. IS THE REGISTERED TRADEMARK OF EXCEL ENGINEERING, INC. 7/23/2024 4:48:52 PM

**PROJECT INFORMATION**

PROPOSED CAR WASH FOR:  
**MISTER CAR WASH (CO 1452 STROH)**  
 S PARKER RD • PARKER, CO 80134

(130L - V1.2 - ZONE 2)

PROFESSIONAL SEAL

**PRELIMINARY DATES**

JULY 23, 2024

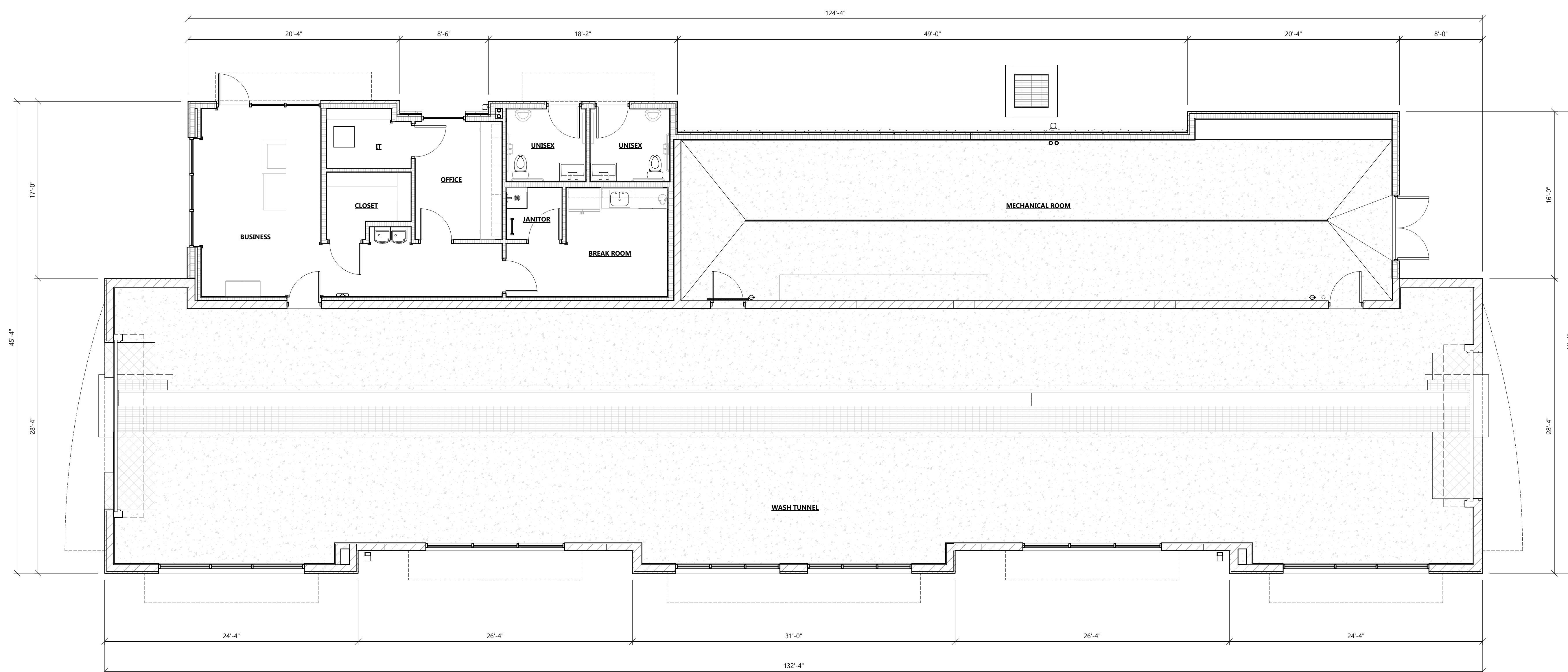
**NOT FOR CONSTRUCTION**

**JOB NUMBER**

230362400

**SHEET NUMBER**

**PRE-2**



**FLOOR PLAN**  
 SCALE: 3/16" = 1'-0"  
 0 5 10