







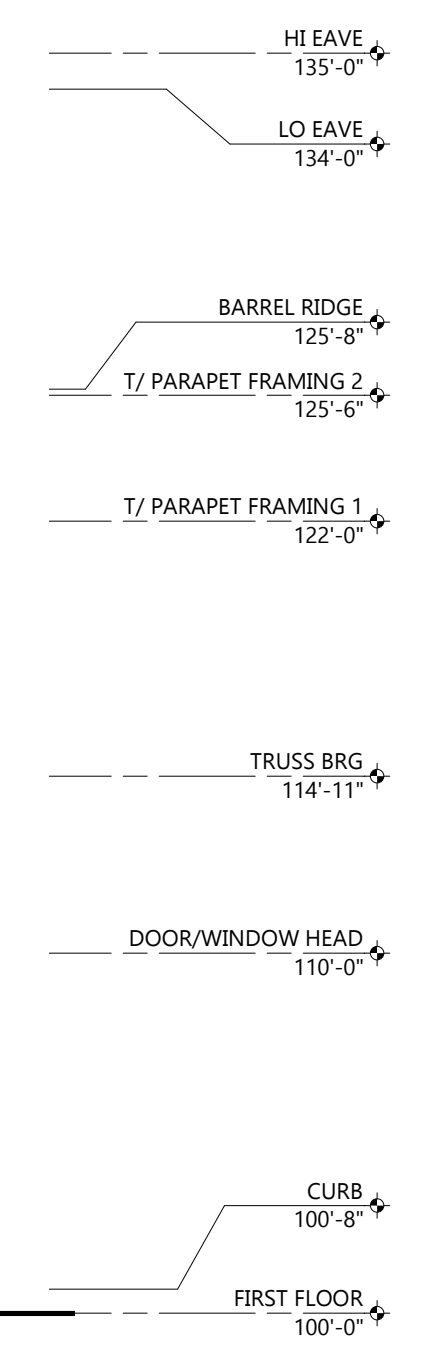


**OFFICE ELEVATION**  
(NOT VISIBLE FROM S PARKER RD)

MATERIALS:  
893 SF MASONRY  
843 SF ALUM. BATTENS  
984 SF EPS  
456 SF METAL PANEL  
142 SF STOREFRONT  
48 SF HM DOOR  
185 SF MISC TRIM, STONE, CONCRETE, ETC.

3,561 SF TOTAL

EPS REQUIRED TO BE LESS THAN 30% OF FACADE  
EPS = 28% SF



**OFFICE ELEVATION**  
SCALE: 3/16" = 1'-0"

**EXTERIOR MATERIAL KEY**

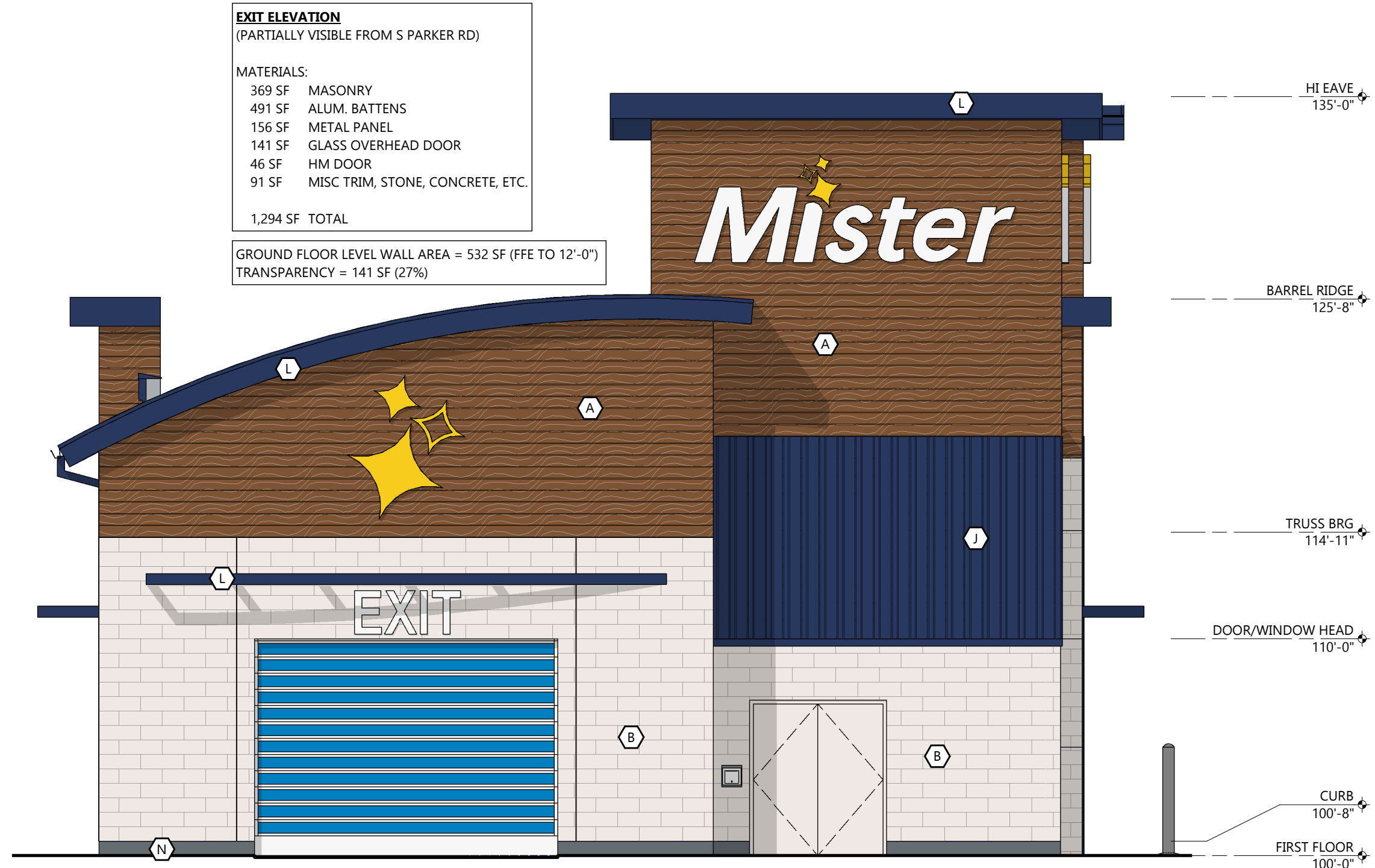
	<b>PREFINISHED ALUMINUM BATTENS</b> MFR: LUMABUILT STYLE: MOSAIC 1/4" BATTENS COLOR: HAZELNUT BROWN
	<b>THRU WALL MASONRY</b> MFR: CORDOVA STONE STYLE: STRUCTURAL BLOCK (8"D x 8"H x 24"L) FULL DEPTH BLOCK (4"D x 8"H x 24"L) COLOR: ALABASTER WHITE w/ MATCHING MORTAR JOINT
	<b>EPS</b> TEXTURE: SAND COLOR: PT-6 (MORNING FOG)
	<b>EPS</b> TEXTURE: SAND COLOR: PT-3 (WALL STREET)
	<b>EPS</b> TEXTURE: SAND COLOR: PT-9 (IN THE NAVY)
	<b>SINGLE WYTHE CMU</b> TEXTURE: SPLIT FACE INTEGRAL COLOR TO MATCH PT-6 (MORNING FOG)
	<b>SINGLE WYTHE CMU</b> TEXTURE: SPLIT FACE INTEGRAL COLOR TO MATCH PT-3 (WALL STREET)
	<b>PRECAST STONE SILL</b> COLOR: LIMESTONE
	<b>PREFINISHED ALUMINUM WALL PANEL</b> MFR: CTMRS (OR EQUAL) COLOR: PT-9 (IN THE NAVY) STYLE: CT-7.2 PANEL
	<b>PREFINISHED STANDING SEAM METAL ROOF PANEL</b> MFR: CTMRS (OR EQUAL) STYLE: LARGE BATTEN 24 GA COLOR: PT-9 (IN THE NAVY)
	<b>PREFINISHED METAL TRIM AND ACCESSORIES</b> MFR: CTMRS (OR EQUAL) COLOR: PT-9 (IN THE NAVY)
	<b>ALUMINUM STOREFRONT SYSTEM</b> GLAZING: CLEAR FRAME: CLEAR ANODIZED
	<b>CONCRETE CURB</b> TEXTURE: HAND RUB COLOR TO MATCH PT-3
	<b>TREX DECK BOARD</b> COLOR TO MATCH PT-3

**GENERAL NOTES**

- ALL SIGNAGE SHOWN FOR INFORMATIONAL PURPOSES ONLY. ALL ADVERTISING SIGNAGE SUBJECT TO SEPARATE SIGN PERMIT SUBMITTAL AND APPROVAL.

PROVIDE EUSERC CABINET LOCATION AND MEET CORE CLEARANCE REQUIREMENTS

[EUSERC Cabinet location has been shown and called out on the site plan](#)

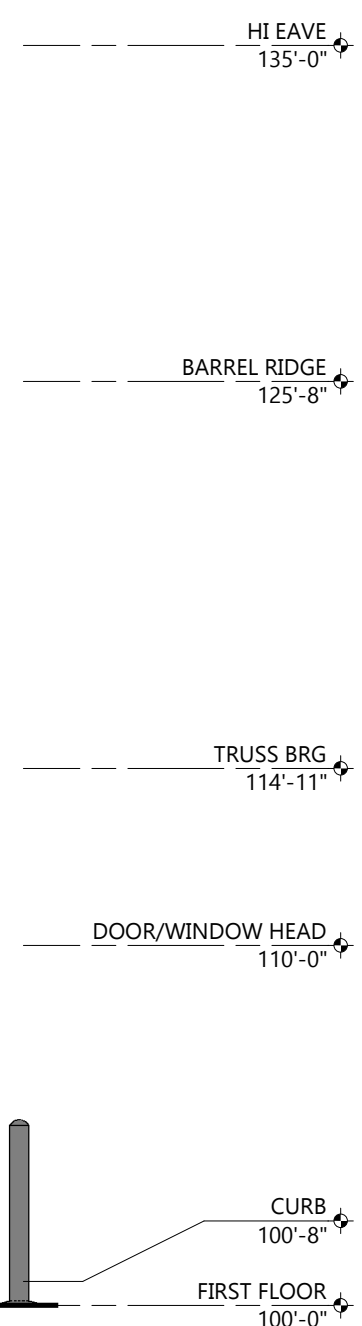


**EXIT ELEVATION**  
(PARTIALLY VISIBLE FROM S PARKER RD)

MATERIALS:  
369 SF MASONRY  
491 SF ALUM. BATTENS  
156 SF METAL PANEL  
141 SF GLASS OVERHEAD DOOR  
46 SF HM DOOR  
91 SF MISC TRIM, STONE, CONCRETE, ETC.

1,294 SF TOTAL

GROUND FLOOR LEVEL WALL AREA = 532 SF (FFE TO 12'-0")  
TRANSPARENCY = 141 SF (27%)



**EXIT ELEVATION**  
SCALE: 3/16" = 1'-0"

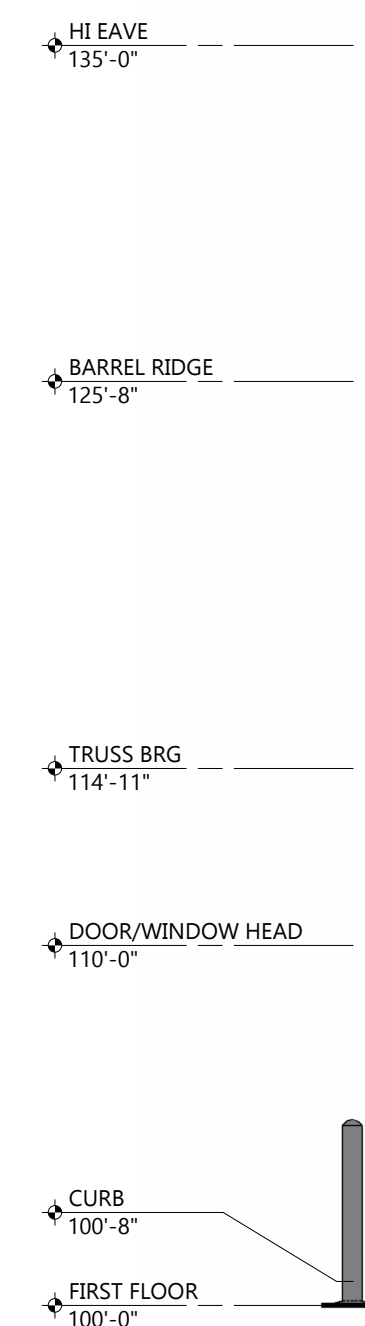


**ENTRANCE ELEVATION**  
(PARTIALLY VISIBLE FROM S PARKER RD)

MATERIALS:  
270 SF MASONRY  
507 SF ALUM. BATTENS  
191 SF METAL PANEL  
166 SF GLASS OVERHEAD DOOR  
105 SF STOREFRONT  
83 SF MISC TRIM, STONE, CONCRETE, ETC.

1,322 SF TOTAL

GROUND FLOOR LEVEL WALL AREA = 546 SF (FFE TO 12'-0")  
TRANSPARENCY = 270 SF (49%)



**ENTRANCE ELEVATION**  
SCALE: 3/16" = 1'-0"

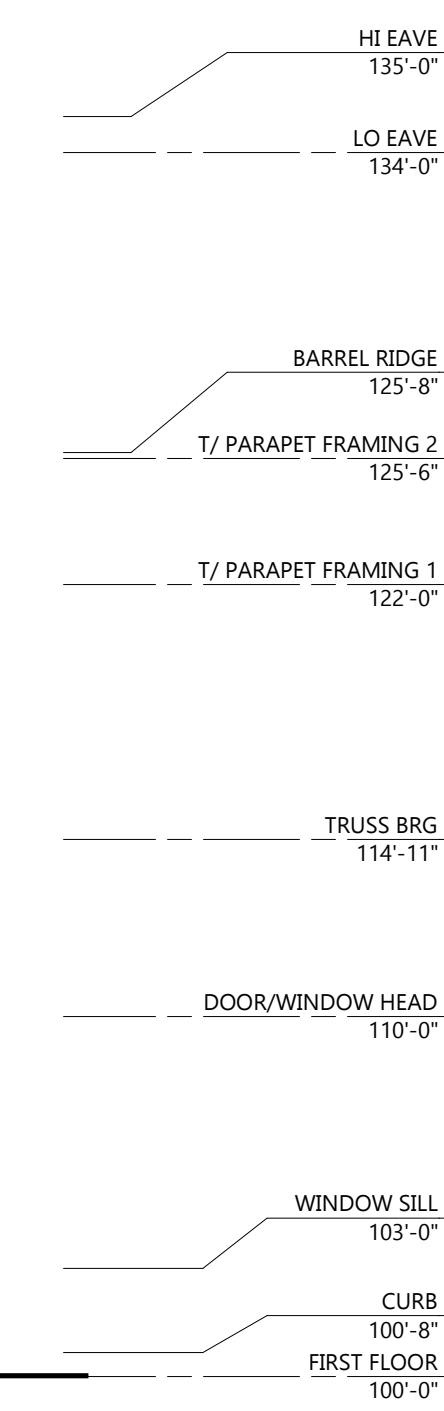


**TUNNEL ELEVATION**  
(VISIBLE FROM S PARKER RD)

MATERIALS:  
874 SF MASONRY  
336 SF ALUM. BATTENS  
807 SF SPLIT FACE CMU  
95 SF EPS  
523 SF STOREFRONT  
195 SF MISC TRIM, STONE, CONCRETE, ETC.

2,830 SF TOTAL

GROUND FLOOR LEVEL WALL AREA = 1588 SF (FFE TO 12'-0")  
TRANSPARENCY = 523 SF (33%)



**TUNNEL ELEVATION**  
SCALE: 3/16" = 1'-0"

**Excel**  
Always a Better Plan  
100 Camelot Drive  
Fond du Lac, WI 54935  
920-926-9800  
excelengineer.com

COLLABORATION

**PROJECT INFORMATION**

PROPOSED CAR WASH FOR:  
**MISTER CAR WASH (CO 1452 STROH)**  
S PARKER RD • PARKER, CO 80134

(130L - V1.2 - ZONE 2)

PROFESSIONAL SEAL

**PRELIMINARY DATES**  
JULY 23, 2024

**NOT FOR CONSTRUCTION**

**JOB NUMBER**  
230362400

**SHEET NUMBER**  
**PRE-1**

© 2024 by Excel Engineering, Inc. All Rights Reserved. 07/23/2024 14:48:52 PM