

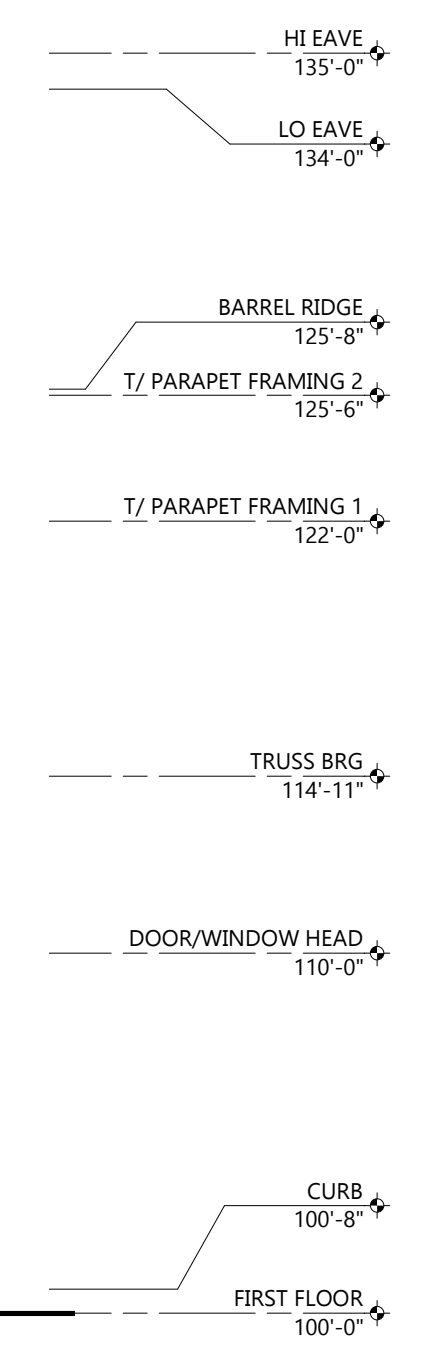


OFFICE ELEVATION
(NOT VISIBLE FROM S PARKER RD)

MATERIALS:
893 SF MASONRY
843 SF ALUM. BATTENS
984 SF EPS
456 SF METAL PANEL
142 SF STOREFRONT
48 SF HM DOOR
185 SF MISC TRIM, STONE, CONCRETE, ETC.

3,561 SF TOTAL

EPS REQUIRED TO BE LESS THAN 30% OF FACADE.
EPS = 28% SF



OFFICE ELEVATION
SCALE: 3/16" = 1'-0"

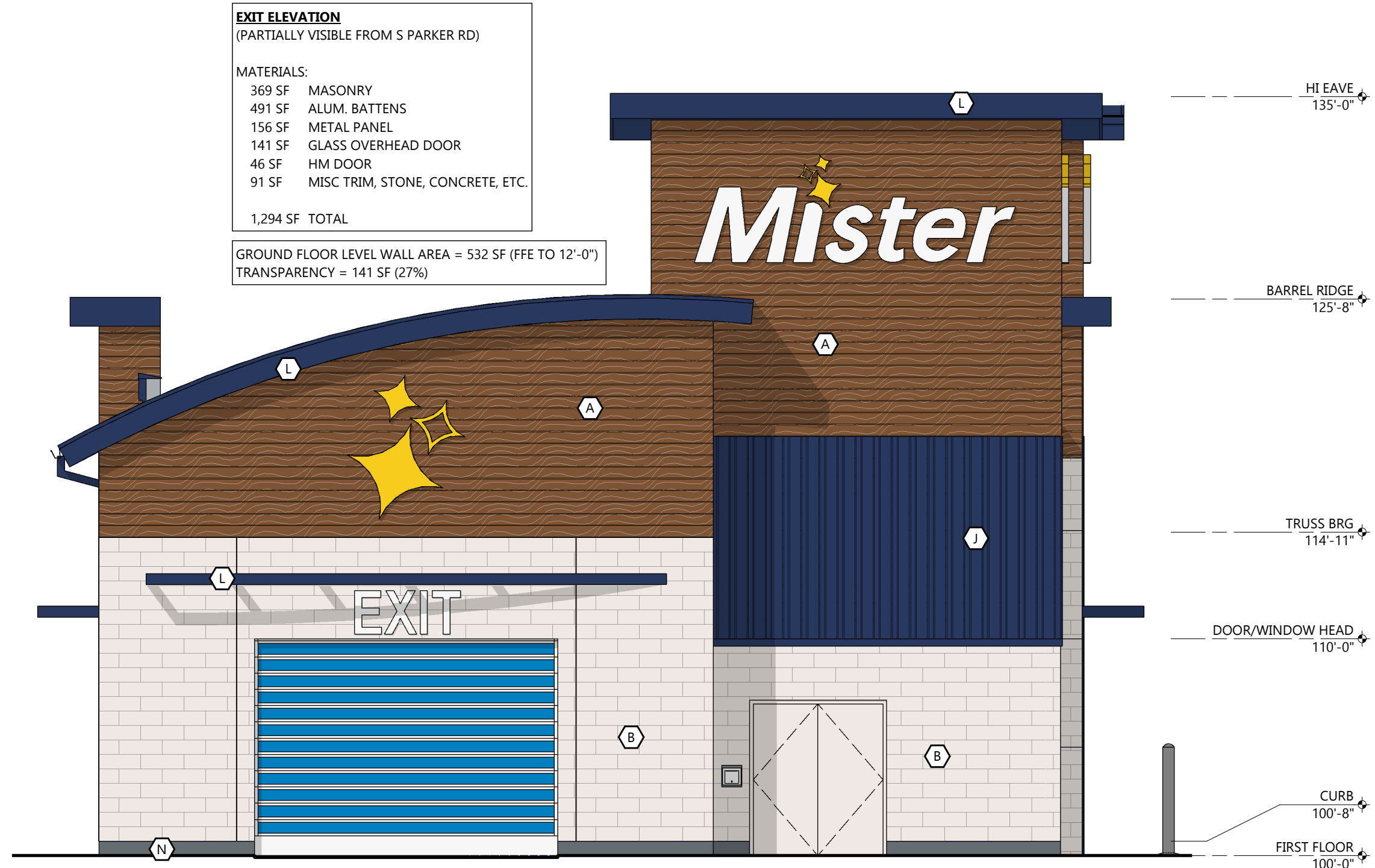
EXTERIOR MATERIAL KEY

A	PREFINISHED ALUMINUM BATTENS MFR: LUMABUILT STYLE: MOSAIC 1/4" BATTENS COLOR: HAZELNUT BROWN
B	THRU WALL MASONRY STYLE: STRUCTURAL BLOCK (8"D x 8"H x 24"L) FULL DEPTH BLOCK (4"D x 8"H x 24"L) COLOR: ALABASTER WHITE w/ MATCHING MORTAR JOINT
C	EPS TEXTURE: SAND COLOR: PT-6 (MORNING FOG)
D	EPS TEXTURE: SAND COLOR: PT-3 (WALL STREET)
E	EPS TEXTURE: SAND COLOR: PT-9 (IN THE NAVY)
F	SINGLE WYTHE CMU TEXTURE: SPLIT FACE INTEGRAL COLOR TO MATCH PT-6 (MORNING FOG)
G	SINGLE WYTHE CMU TEXTURE: SPLIT FAC INTEGRAL COLOR TO MATCH PT-3 (WALLSTREET)
H	PRECAST STONE SILL COLOR: LIMESTONE
I	PREFINISHED ALUMINUM WALL PANEL MFR: CTMRS (OR EQUAL) COLOR: PT-9 (IN THE NAVY) STYLE: CT-7.2 PANEL
J	PREFINISHED STANDING SEAM METAL ROOF PANEL MFR: CTMRS (OR EQUAL) STYLE: LARGE BATTEN 24 GA COLOR: PT-9 (IN THE NAVY)
L	PREFINISHED METAL TRIM AND ACCESSORIES MFR: CTMRS (OR EQUAL) COLOR: PT-9 (IN THE NAVY)
M	ALUMINUM STOREFRONT SYSTEM GLAZING: CLEAR FRAME: CLEAR ANODIZED
N	CONCRETE CURB TEXTURE: HAND RUB COLOR TO MATCH PT-3
P	TREX DECK BOARD COLOR TO MATCH PT-3

GENERAL NOTES

- ALL SIGNAGE SHOWN FOR INFORMATIONAL PURPOSES ONLY. ALL ADVERTISING SIGNAGE SUBJECT TO SEPARATE SIGN PERMIT SUBMITTAL AND APPROVAL.

PROVIDE EUSERC CABINET LOCATION AND MEET CORE CLEARANCE REQUIREMENTS

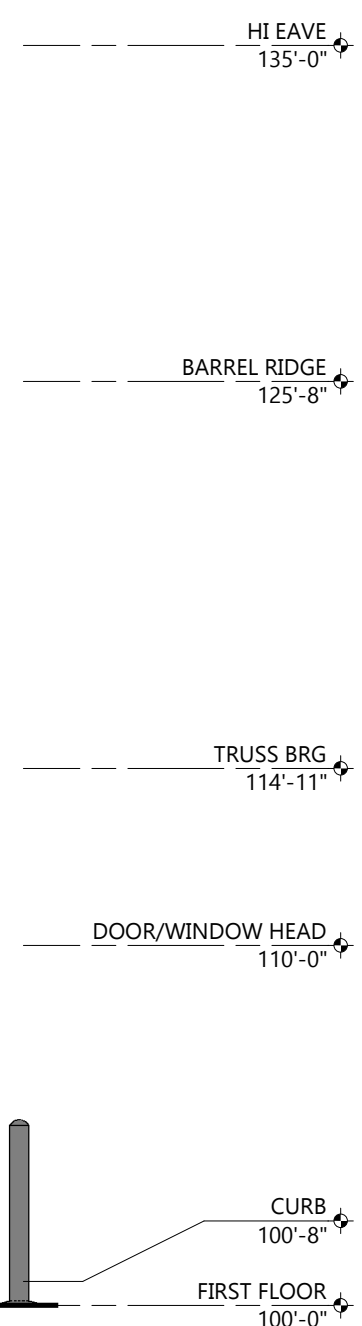


EXIT ELEVATION
(PARTIALLY VISIBLE FROM S PARKER RD)

MATERIALS:
369 SF MASONRY
491 SF ALUM. BATTENS
156 SF METAL PANEL
141 SF GLASS OVERHEAD DOOR
46 SF HM DOOR
91 SF MISC TRIM, STONE, CONCRETE, ETC.

1,294 SF TOTAL

GROUND FLOOR LEVEL WALL AREA = 532 SF (FFE TO 12'-0")
TRANSPARENCY = 141 SF (27%)



EXIT ELEVATION
SCALE: 3/16" = 1'-0"

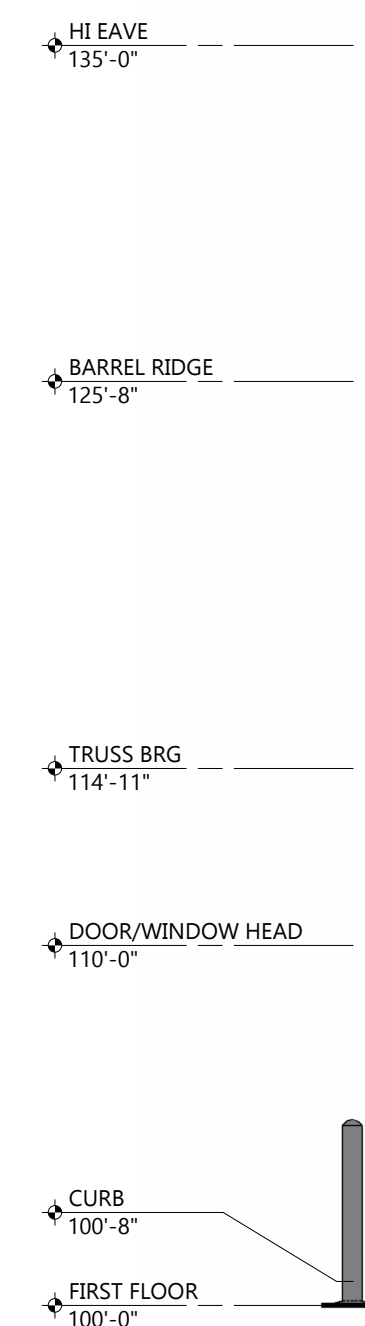


ENTRANCE ELEVATION
(PARTIALLY VISIBLE FROM S PARKER RD)

MATERIALS:
270 SF MASONRY
507 SF ALUM. BATTENS
191 SF METAL PANEL
166 SF GLASS OVERHEAD DOOR
105 SF STOREFRONT
83 SF MISC TRIM, STONE, CONCRETE, ETC.

1,322 SF TOTAL

GROUND FLOOR LEVEL WALL AREA = 546 SF (FFE TO 12'-0")
TRANSPARENCY = 270 SF (49%)



ENTRANCE ELEVATION
SCALE: 3/16" = 1'-0"

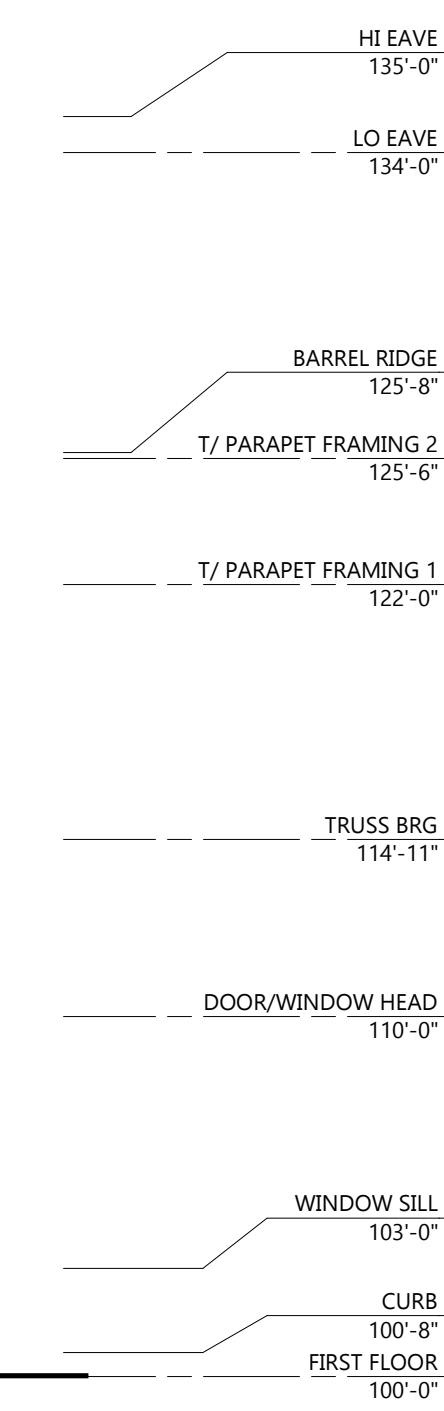


TUNNEL ELEVATION
(VISIBLE FROM S PARKER RD)

MATERIALS:
874 SF MASONRY
336 SF ALUM. BATTENS
807 SF SPLIT FACE CMU
95 SF EPS
523 SF STOREFRONT
195 SF MISC TRIM, STONE, CONCRETE, ETC.

2,830 SF TOTAL

GROUND FLOOR LEVEL WALL AREA = 1588 SF (FFE TO 12'-0")
TRANSPARENCY = 523 SF (33%)



TUNNEL ELEVATION
SCALE: 3/16" = 1'-0"

COLLABORATION



PROJECT INFORMATION

PROPOSED CAR WASH FOR:
MISTER CAR WASH (CO 1452 STROH)
S PARKER RD • PARKER, CO 80134

(130L - V1.2 - ZONE 2)

PROFESSIONAL SEAL

PRELIMINARY DATES
JULY 23, 2024

NOT FOR CONSTRUCTION

JOB NUMBER
230362400

SHEET NUMBER

PRE-1

© 2024 by Excel Engineering, Inc. All Rights Reserved. 07/23/2024 10:48:52 AM