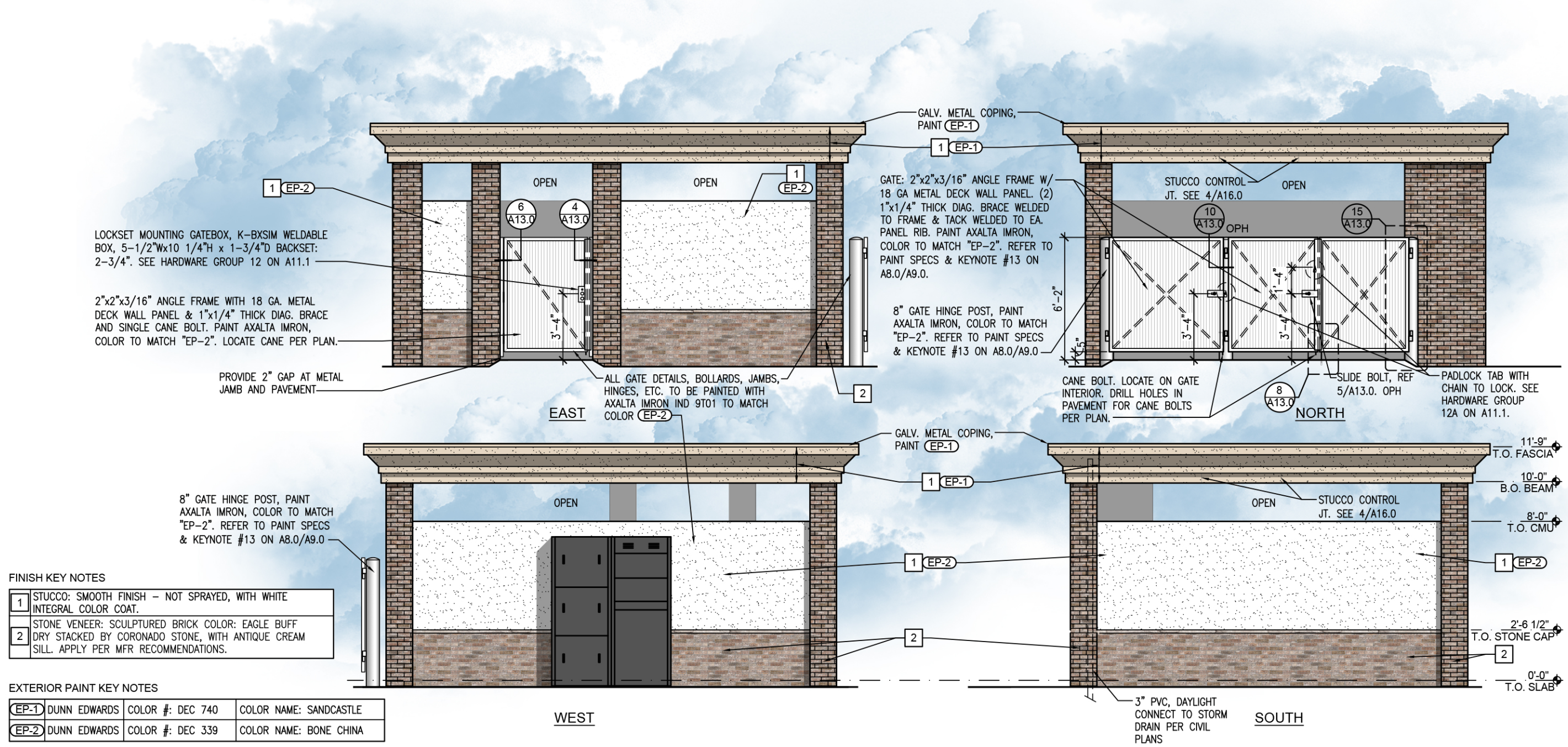


# PARKER & PINE FILING, AMENDMENT NO. 1

PARKER & PINE FILING NO. 1, LOT 1, LOCATED IN THE SOUTHWEST QUARTER OF SECTION 10, TOWNSHIP 6 SOUTH, RANGE 66 WEST OF THE 6TH PRINCIPAL MERIDIAN, TOWN OF PARKER, COUNTY OF DOUGLAS, STATE OF COLORADO  
S PARKER ROAD & PINE LANE, ARVADA COLORADO



LOCKSET MOUNTING GATEBOX, K-BXSIM WELDABLE BOX, 5-1/2"Wx10 1/4"H x 1-3/4"D BACKSET: 2-3/4". SEE HARDWARE GROUP 12 ON A11.1

2"x2"x3/16" ANGLE FRAME WITH 18 GA. METAL DECK WALL PANEL & 1"x1/4" THICK DIAG. BRACE AND SINGLE CANE BOLT. PAINT AXALTA IMRON, COLOR TO MATCH "EP-2". LOCATE CANE PER PLAN.

GATE: 2"x2"x3/16" ANGLE FRAME W/ 18 GA METAL DECK WALL PANEL. (2) 1"x1/4" THICK DIAG. BRACE WELDED TO FRAME & TACK WELDED TO EA. PANEL RIB. PAINT AXALTA IMRON, COLOR TO MATCH "EP-2". REFER TO PAINT SPECS & KEYNOTE #13 ON A8.0/A9.0.

8" GATE HINGE POST, PAINT AXALTA IMRON, COLOR TO MATCH "EP-2". REFER TO PAINT SPECS & KEYNOTE #13 ON A8.0/A9.0

**FINISH KEY NOTES**

1	STUCCO: SMOOTH FINISH - NOT SPRAYED, WITH WHITE INTEGRAL COLOR COAT.
2	STONE VENEER: SCULPTURED BRICK COLOR: EAGLE BUFF DRY STACKED BY CORONADO STONE, WITH ANTIQUE CREAM SILL. APPLY PER MFR RECOMMENDATIONS.

**EXTERIOR PAINT KEY NOTES**

EP-1	DUNN EDWARDS	COLOR #: DEC 740	COLOR NAME: SANDCASTLE
EP-2	DUNN EDWARDS	COLOR #: DEC 339	COLOR NAME: BONE CHINA



**Trash Enclosure Elevations**  
Issued Date: 08/16/24

**IN-N-OUT BURGER**  
Parker, CO

