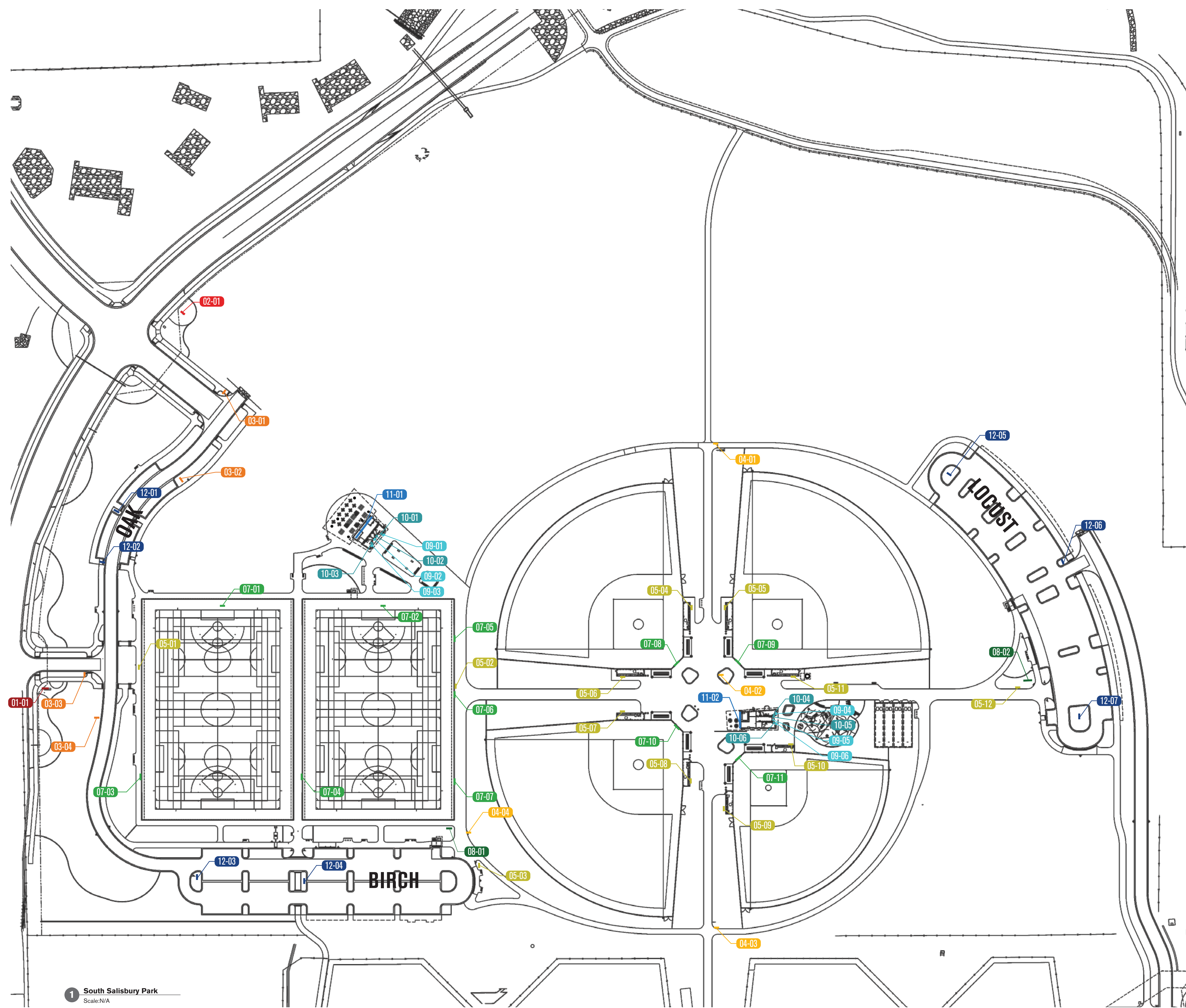


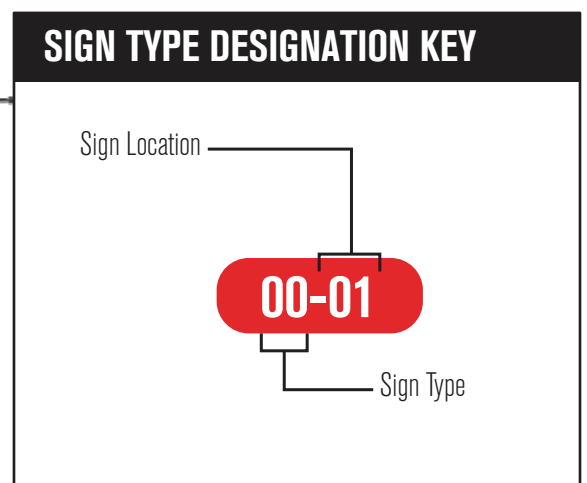
THE SQUARE ABOVE AND COLOR WITH BLACK AND WHITE LETTERS, PRINTED CORRECTLY  
 THE LINE SHOWN ABOVE IS THIS SHEET'S ORIGINAL PAGE SIZE  
 D  
 C  
 B  
 A



- NOTES:**
1. FABRICATOR TO SUBMIT SHOP DRAWINGS SHOWING ALL MATERIALS, COLORS, CONNECTIONS, STRUCTURE, ETC., FOR APPROVAL PRIOR TO FABRICATION/INSTALLATION.
  2. DESIGNER TO PROVIDE ARTWORK.
  3. SAMPLES OF MATERIALS AND COLORS REQUIRED FOR APPROVAL BEFORE FABRICATION.
  4. CONCEAL ALL FASTENERS—NO ROUND HEADED SCREWS. FINISH TO MATCH ADJACENT SURFACES.
  5. FIELD VERIFY ALL DIMENSIONS, LOCATIONS, MESSAGES, AND SITE CONDITIONS PRIOR TO FABRICATION.
  6. ALL PERMITS AND ENGINEERING (INCLUDING STRUCTURE AND ELECTRICAL) ARE TO BE PROVIDED BY THE SIGN FABRICATOR.
  7. GRAPHICS, TEXT, AND MESSAGES ARE TO BE SUBMITTED BY THE FABRICATOR FOR APPROVAL BY THE OWNER PRIOR TO PRODUCTION.

**SIGNAGE LEGEND**

- 01 MAIN MONUMENT SIGNAGE
  - 02 DIGITAL MONUMENT SIGNAGE
  - 03 VEHICULAR DIRECTIONAL
  - 04 PEDESTRIAN DIRECTIONAL
  - 05 DIRECTORY SIGNAGE
  - 06 RULES & REGULATIONS
  - 07 FIELD SIGNAGE
  - 08 PARKING LOT IDENTIFICATION
  - 09 RESTROOM SIGNAGE (LARGE GLYPH & LETTERS)
  - 10 TYPICAL RESTROOM SIGNAGE
  - 11 BUILDING SIGNAGE/ INSTALLATION
- A Removal/ Update of Existing Signage



1 South Salisbury Park  
Scale: N/A

**hord coplan macht**  
 LANDSCAPE ARCHITECT / ARCHITECT  
 1800 Wazee Street, Suite 450  
 Denver, CO 80202  
 p. 303.607.0977

CIVIL ENGINEER / STRUCTURAL ENGINEER  
 JVA Incorporated  
 1675 Larmer Street, #650  
 Denver, CO 80202  
 p. 303.444.1951

ELECTRICAL ENGINEER  
 Ackerman Engineering, Inc.  
 3300 Youngfield Street, #204  
 Wheat Ridge, CO 80215  
 p. 303.278.7297

IRRIGATION  
 Avocet Irrigation  
 11701 W. 46th Circle, Suite F-509  
 Littleton, CO 80127  
 p. 303.986.2175

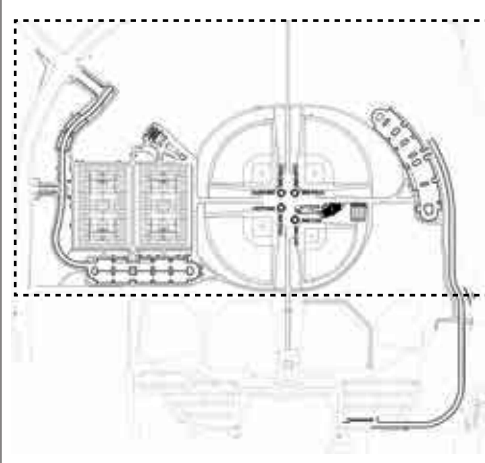
MECHANICAL ENGINEER  
 ENVISION Mechanical Engineers, Inc.  
 9777 Regent Court, #500  
 Englewood, CO 80112  
 p. 303.986.9223

Town of Parker  
**SALISBURY PARK**  
**NORTH - PHASE 1**  
 11700 MOTSENBOCKER RD  
 PARKER, CO 80134

**hord coplan macht**  
 ARCHITECTURE  
 LANDSCAPE ARCHITECTURE  
 PLANNING  
 INTERIOR DESIGN

DATE	DESCRIPTION

Project Number: 223072.00  
 Sheet Issue Date: 2024-11-22  
 Drawn By: EH, LW, ED, MS, AG  
 Checked By: RB, CB, DD



Drawing  
 Signage Location Plan  
 NORTH

**L-800**  
 SITE PLAN SUBMITTAL



THE SQUARE ABOVE EACH COLOR WITH BLACK AND WHITE LETTERS, PRINTED CORRECTLY.

D

C

B

A

Town of Parker  
**SALISBURY PARK**  
**NORTH - PHASE 1**  
11700 MOTSENBOCKER RD  
PARKER, CO 80134

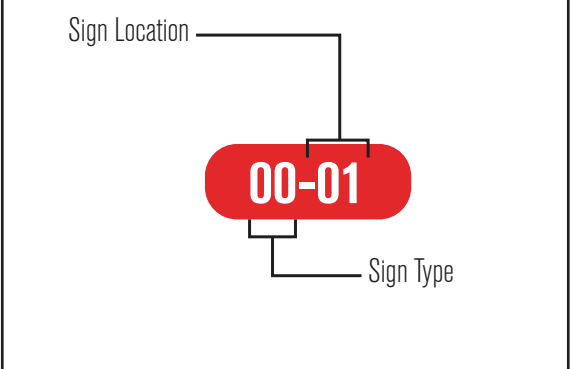
ARCHITECTURE  
LANDSCAPE ARCHITECTURE  
PLANNING  
INTERIOR DESIGN

- NOTES:**
- FABRICATOR TO SUBMIT SHOP DRAWINGS SHOWING ALL MATERIALS, COLORS, CONNECTIONS, STRUCTURE, ETC., FOR APPROVAL PRIOR TO FABRICATION/INSTALLATION.
  - DESIGNER TO PROVIDE ARTWORK.
  - SAMPLES OF MATERIALS AND COLORS REQUIRED FOR APPROVAL BEFORE FABRICATION.
  - CONCEAL ALL FASTENERS—NO ROUND HEADED SCREWS. FINISH TO MATCH ADJACENT SURFACES.
  - FIELD VERIFY ALL DIMENSIONS, LOCATIONS, MESSAGES, AND SITE CONDITIONS PRIOR TO FABRICATION.
  - ALL PERMITS AND ENGINEERING (INCLUDING STRUCTURE AND ELECTRICAL) ARE TO BE PROVIDED BY THE SIGN FABRICATOR.
  - GRAPHICS, TEXT, AND MESSAGES ARE TO BE SUBMITTED BY THE FABRICATOR FOR APPROVAL BY THE OWNER PRIOR TO PRODUCTION.
  - POSTS AND BEAM TO BE ROUGH-SAWN WESTERN RED CEDAR COMPLYING WITH THE FOLLOWING GRADING STANDARDS: NLGA 131 a,b,c; WCLIB 131 a,b,c; WWPA 80.10, 80.11, 80.12.
  - BASIS-OF-DESIGN STONE VENEER: CSV-2030 BUCKS COUNTY (SUPPLIER) FIELDSTONE
  - PROVIDE FOUNDATION AND REINFORCING FOR CAST-IN-PLACE BACKUP WALL PER STRUCTURAL ENGINEER'S DESIGN BASED ON GEOTECH / SOILS REPORT
  - ANTI-GRAFFITI COATING TO BE APPLIED TO THE METAL SIGN FACE AND STONE. BASIS-OF-DESIGN: VANDITOP (MFR) SACRIFICIAL TOP COAT OR APPROVED EQUAL. APPLY PER MANUFACTURER INSTRUCTIONS.

**SIGNAGE LEGEND**

- 01 MAIN MONUMENT SIGNAGE
  - 02 DIGITAL MONUMENT SIGNAGE
  - 03 VEHICULAR DIRECTIONAL
  - 04 PEDESTRIAN DIRECTIONAL
  - 05 DIRECTORY SIGNAGE
  - 06 RULES & REGULATIONS
  - 07 FIELD SIGNAGE
  - 08 PARKING LOT IDENTIFICATION
  - 09 RESTROOM SIGNAGE (LARGE GLYPH & LETTERS)
  - 10 TYPICAL RESTROOM SIGNAGE
  - 11 BUILDING SIGNAGE/ INSTALLATION
- A Removal/ Update of Existing Signage

**SIGN TYPE DESIGNATION KEY**



DATE	DESCRIPTION

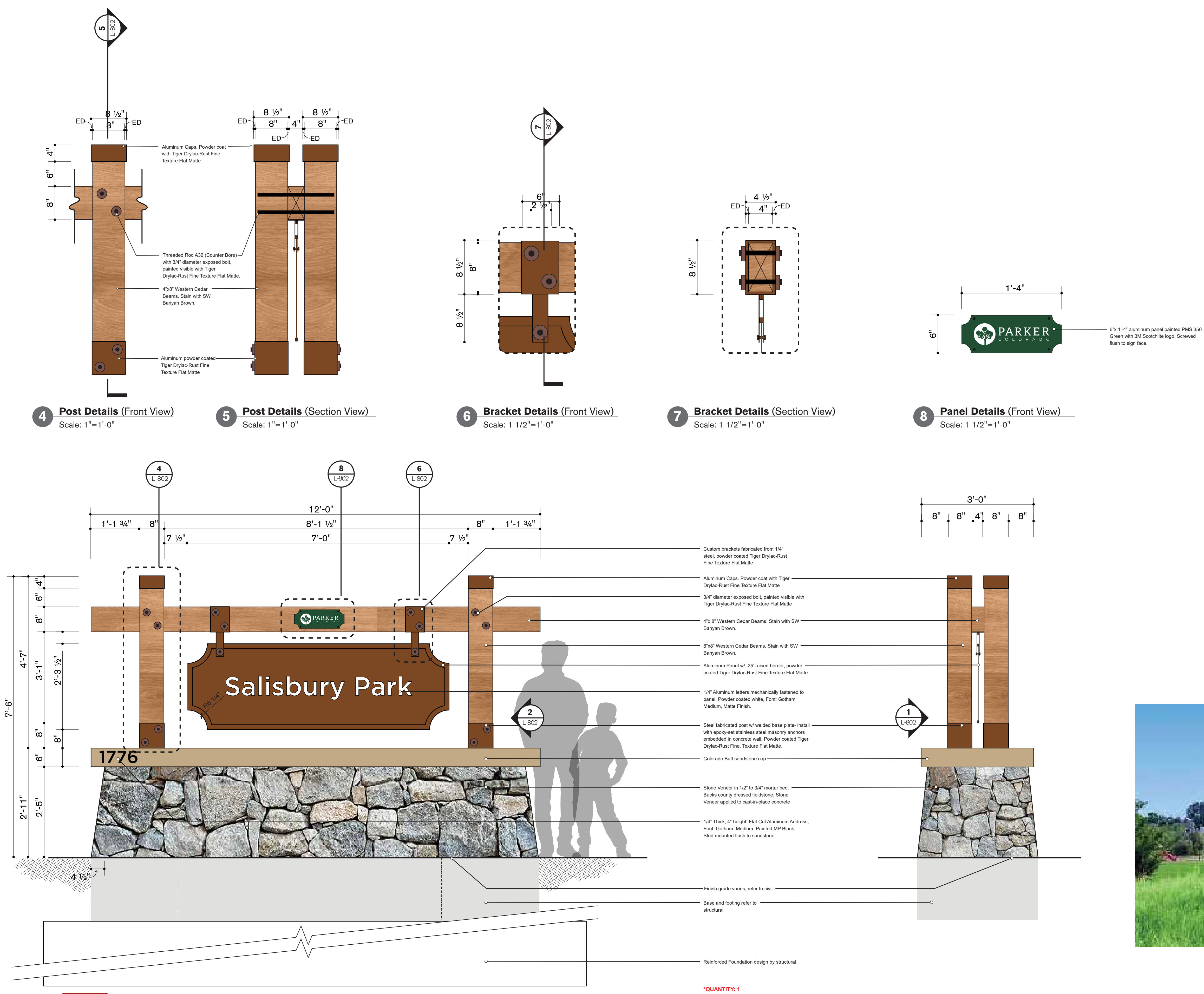
Project Number: 223072.00  
Sheet Issue Date: 2024-11-22  
Drawn By: EH, LW, ED, MS, AG  
Checked By: RB, CB, DD

**Key Map**

Drawing  
Main Monument Signage

**L-802**

SITE PLAN SUBMITTAL



**4 Post Details (Front View)**  
Scale: 1"=1'-0"

**5 Post Details (Section View)**  
Scale: 1"=1'-0"

**6 Bracket Details (Front View)**  
Scale: 1 1/2"=1'-0"

**7 Bracket Details (Section View)**  
Scale: 1 1/2"=1'-0"

**8 Panel Details (Front View)**  
Scale: 1 1/2"=1'-0"

**1 Monument Signage (Front View)**  
Scale: 3/4"=1'-0"

**2 Monument Signage (Side View)**  
Scale: 3/4"=1'-0"

**3 Monument Signage (Precedent)**  
Scale: N/A



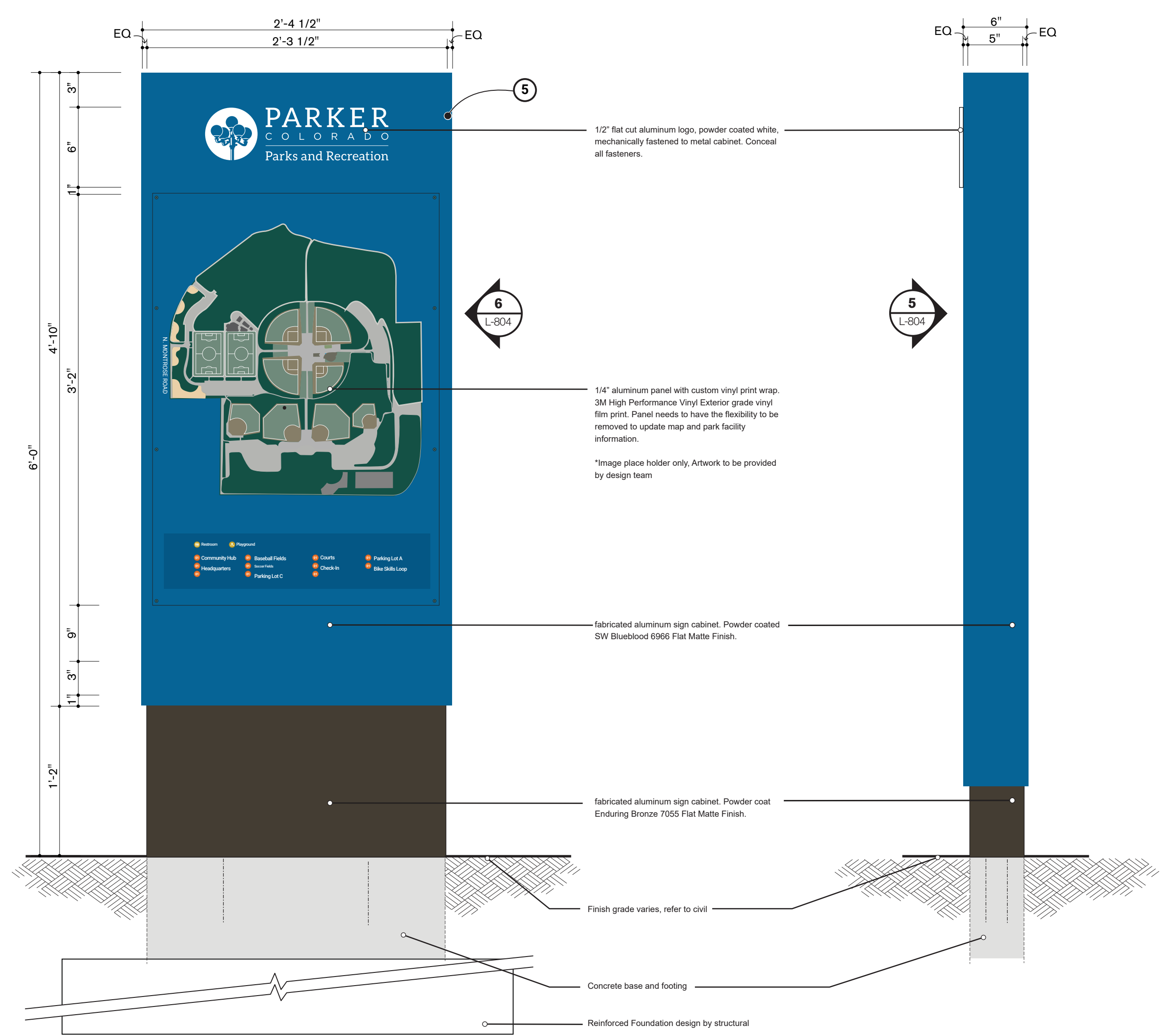
THE SQUARE ABOVE EACH COLOR WITH BLACK AND WHITE LETTERS PRINTED CORRECTLY

D

C

B

A

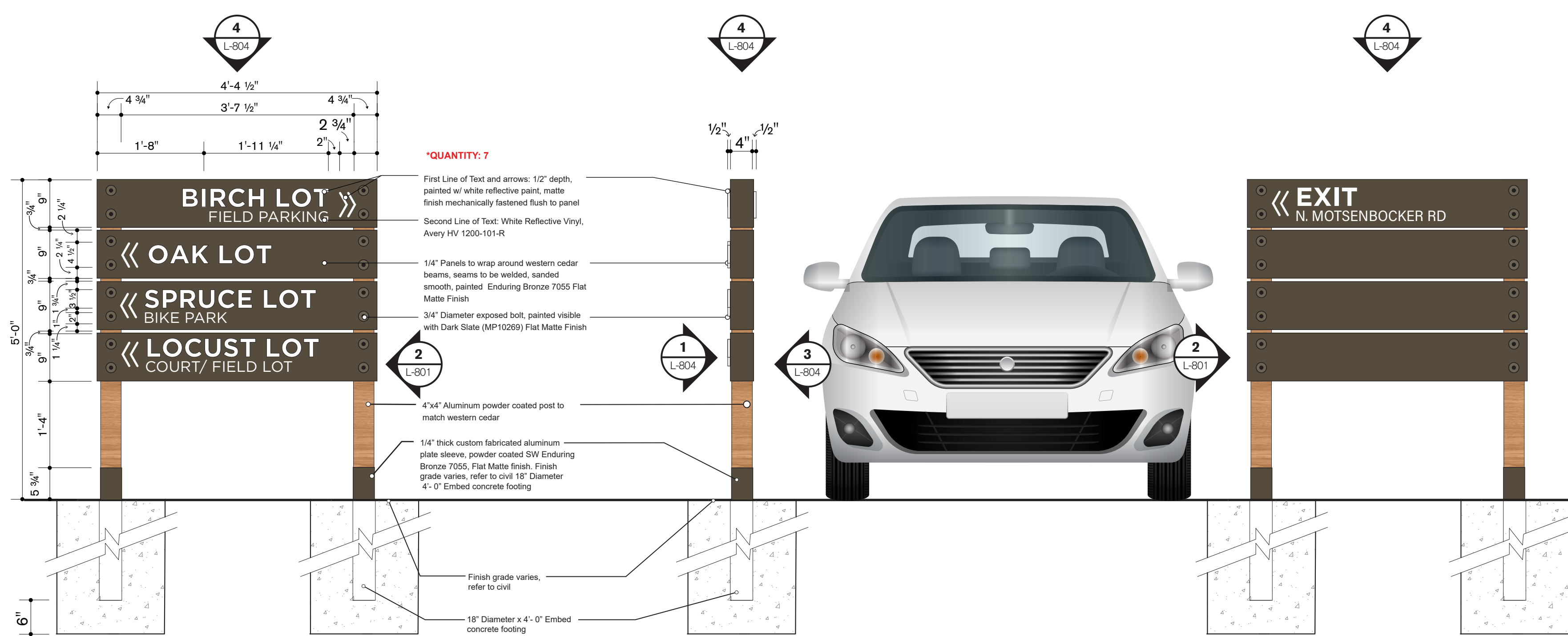


SIGN TYPE: 05

**5 Directory Map (Front)**  
Scale: 1 1/2"=1'-0"

**6 Directory Map (Side)**  
Scale: 1 1/2"=1'-0"

\*QUANTITY: 2

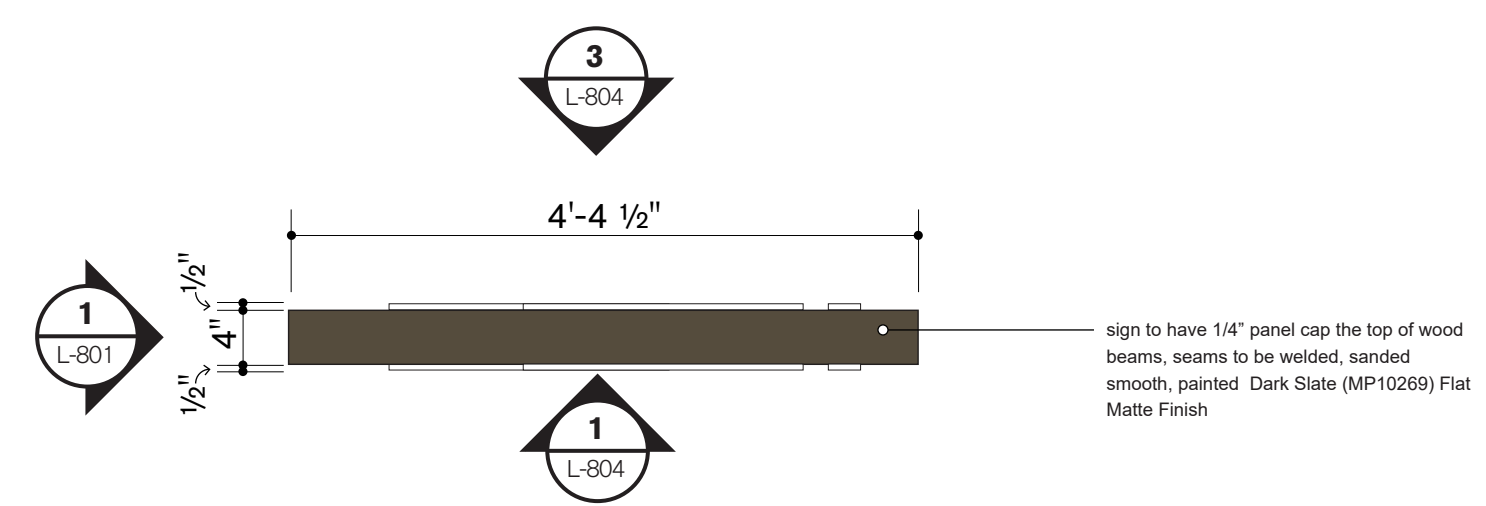


SIGN TYPE: 03

**1 Vehicular Directional (Front)**  
Scale: 3/4"=1'-0"

**2 Vehicular Directional (Side)**  
Scale: 3/4"=1'-0"

**3 Vehicular Directional (Back)**  
Scale: 3/4"=1'-0"



**4 Vehicular Directional (Plan View)**  
Scale: 3/4"=1'-0"

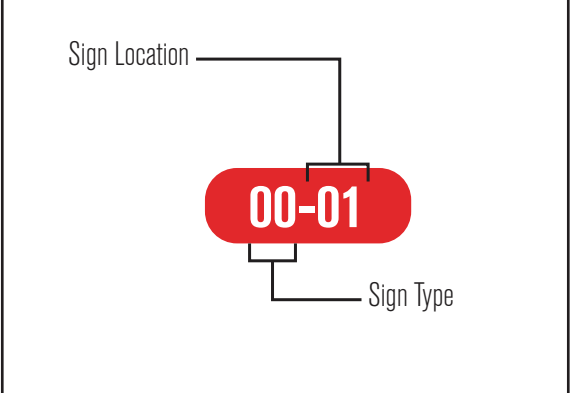
**NOTES:**

- FABRICATOR TO SUBMIT SHOP DRAWINGS SHOWING ALL MATERIALS, COLORS, CONNECTIONS, STRUCTURE, ETC., FOR APPROVAL PRIOR TO FABRICATION/INSTALLATION.
- DESIGNER TO PROVIDE ARTWORK.
- SAMPLES OF MATERIALS AND COLORS REQUIRED FOR APPROVAL BEFORE FABRICATION.
- CONCEAL ALL FASTENERS—NO ROUND HEADED SCREWS. FINISH TO MATCH ADJACENT SURFACES.
- FIELD VERIFY ALL DIMENSIONS, LOCATIONS, MESSAGES, AND SITE CONDITIONS PRIOR TO FABRICATION.
- ALL PERMITS AND ENGINEERING (INCLUDING STRUCTURE AND ELECTRICAL) ARE TO BE PROVIDED BY THE SIGN FABRICATOR.
- GRAPHICS, TEXT, AND MESSAGES ARE TO BE SUBMITTED BY THE FABRICATOR FOR APPROVAL BY THE OWNER PRIOR TO PRODUCTION.
- POSTS AND BEAM TO BE ROUGH-SAWN WESTERN RED CEDAR COMPLYING WITH THE FOLLOWING GRADING STANDARDS: NLGA 131 a,b,c; WCLIB 131 a,b,c; WWPA 80.10, 80.11, 80.12.
- BASIS-OF-DESIGN STONE VENEER: CSV-2030 BUCKS COUNTY (SUPPLIER) FIELDSTONE.
- PROVIDE FOUNDATION AND REINFORCING FOR CAST-IN-PLACE BACKUP WALL PER STRUCTURAL ENGINEER'S DESIGN BASED ON GEOTECH / SOILS REPORT.
- ANTI-GRAFFITI COATING TO BE APPLIED TO THE METAL SIGN FACE AND STONE. BASIS-OF-DESIGN: VANDITOP (MFR) SACRIFICIAL TOP COAT OR APPROVED EQUAL. APPLY PER MANUFACTURER INSTRUCTIONS.

**SIGNAGE LEGEND**

- 01 MAIN MONUMENT SIGNAGE
  - 02 DIGITAL MONUMENT SIGNAGE
  - 03 VEHICULAR DIRECTIONAL
  - 04 PEDESTRIAN DIRECTIONAL
  - 05 DIRECTORY SIGNAGE
  - 06 RULES & REGULATIONS
  - 07 FIELD SIGNAGE
  - 08 PARKING LOT IDENTIFICATION
  - 09 RESTROOM SIGNAGE (LARGE GLYPH & LETTERS)
  - 10 TYPICAL RESTROOM SIGNAGE
  - 11 BUILDING SIGNAGE/ INSTALLATION
- A Removal/ Update of Existing Signage

**SIGN TYPE DESIGNATION KEY**



**hord coplan macht**  
LANDSCAPE ARCHITECT / ARCHITECT  
1800 Wazee Street, Suite 450  
Denver, CO 80202  
p. 303.607.0977

CIVIL ENGINEER / STRUCTURAL ENGINEER  
JVA Incorporated  
1675 Larmer Street, #650  
Denver, CO 80202  
p. 303.444.1991

ELECTRICAL ENGINEER  
Ackerman Engineering, Inc.  
3300 Youngfield Street, #204  
Wheat Ridge, CO 80151  
p. 303.278.7297

IRRIGATION  
Avocet Irrigation  
1125 W. Glen Canyon Ave., Suite F-509  
Littleton, CO 80127  
p. 303.966.2175

MECHANICAL ENGINEER  
ENWISON Mechanical Engineers, Inc.  
8777 Pinyon Court, #500  
Englewood, CO 80112  
p. 303.686.0223

Town of Parker  
**SALISBURY PARK**  
**NORTH - PHASE 1**  
11700 MOTSENBOCKER RD  
PARKER, CO 80134

**hord coplan macht**  
ARCHITECTURE  
LANDSCAPE ARCHITECTURE  
PLANNING  
INTERIOR DESIGN

DATE	DESCRIPTION

Project Number: 223072.00  
Sheet Issue Date: 2024-11-22  
Drawn By: EH, LW, ED, MS, AG  
Checked By: RB, CB, DD

**Key Map**

Drawing  
Vehicular Directional & Directory Signage

**L-804**

SITE PLAN SUBMITTAL

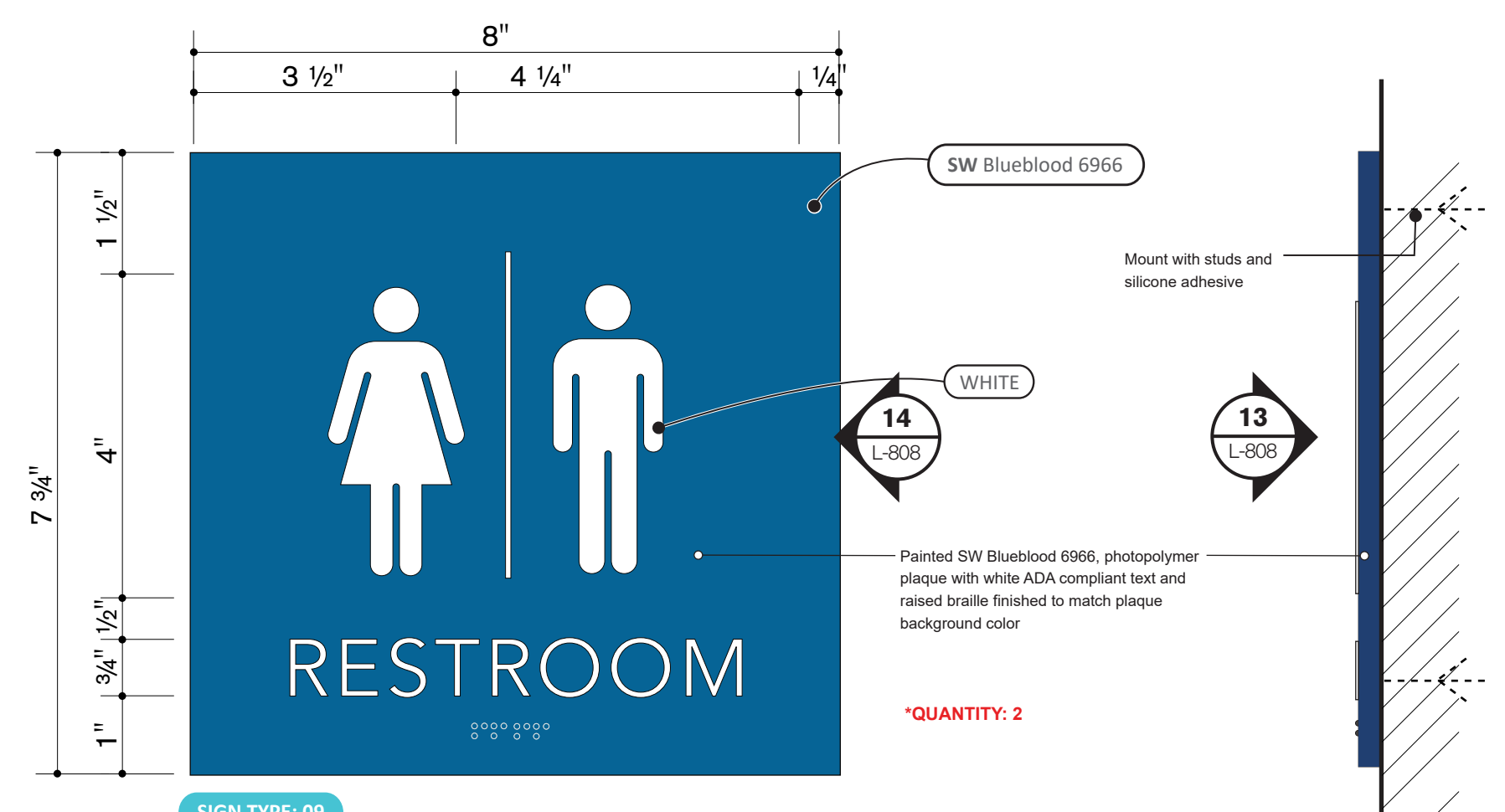






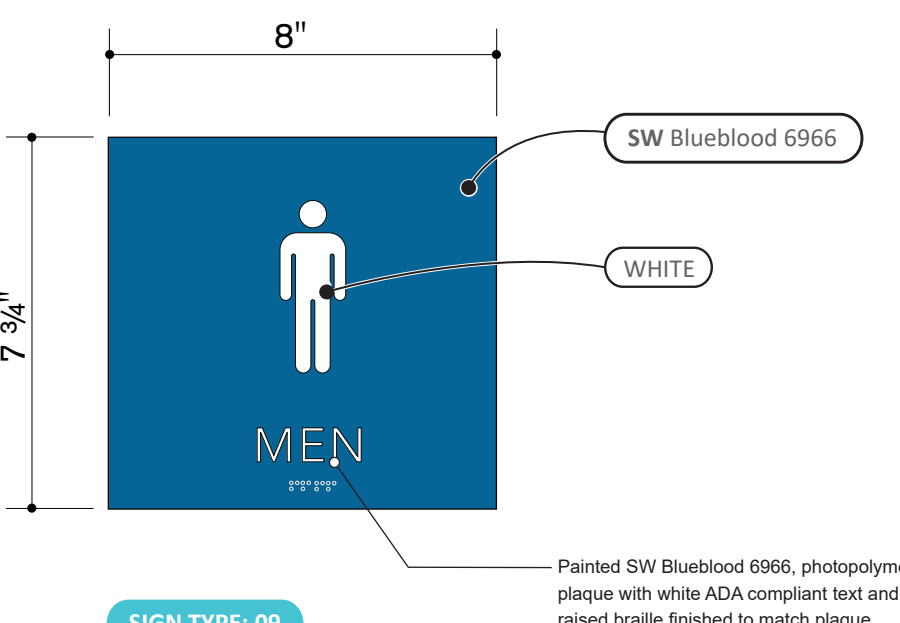
THE SQUARE ABOVE ARE COLORS WITH BLACK AND WHITE LETTERS. PRINTED CORRECTLY. THIS SHEETS ORIGINAL PAGE SIZE.

**D**

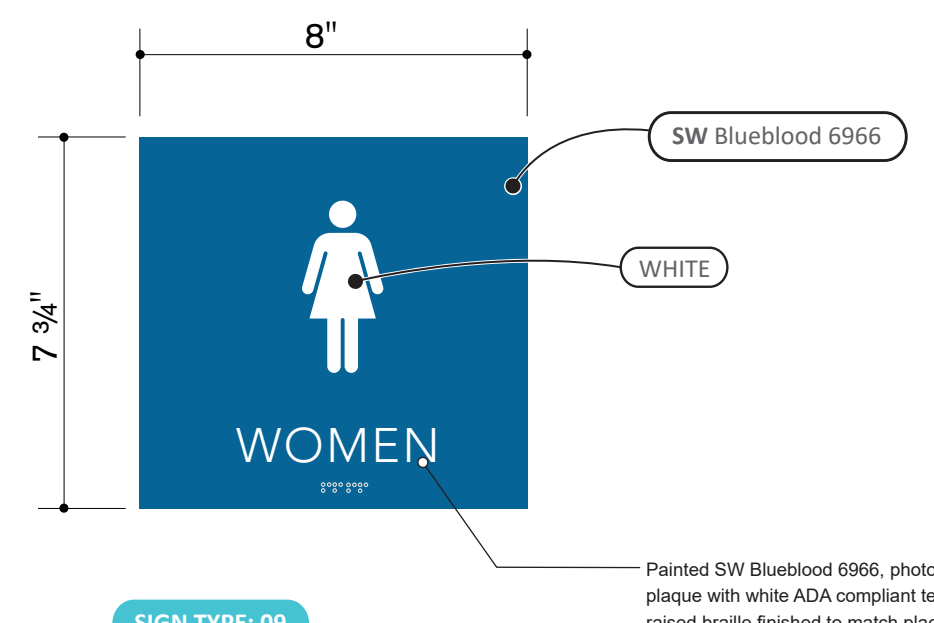


**13 Typical Restroom Sign (Front)**  
Scale: Half scale

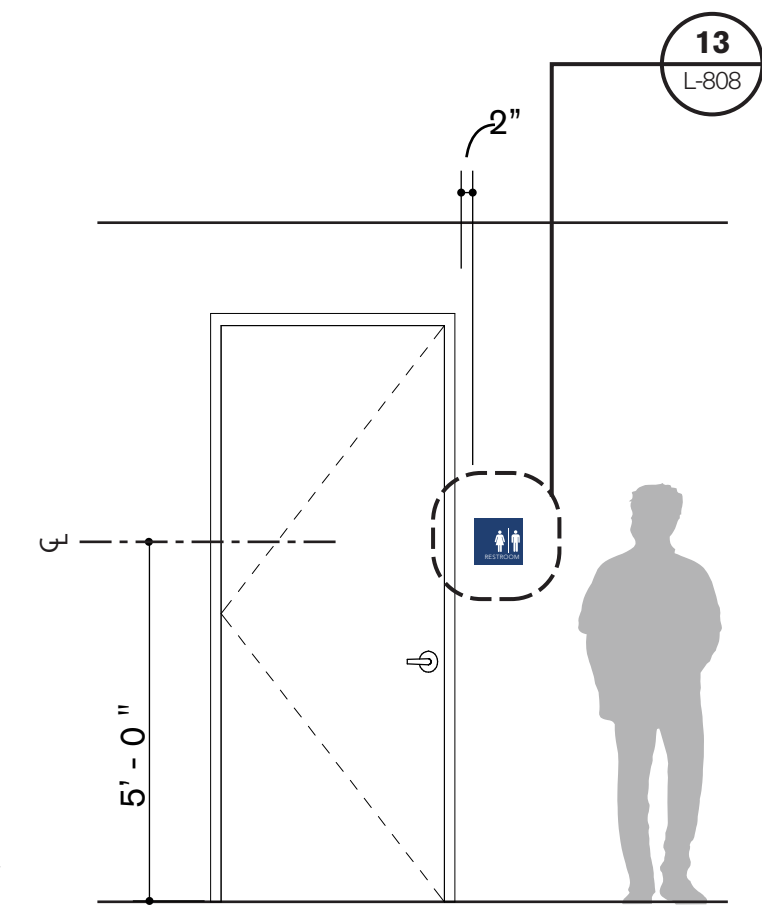
**14 Typical Restroom Sign (Side)**  
Scale: Half scale



**15 Men Restroom Sign**  
Scale: 3"=1'-0"



**16 Women Restroom Sign**  
Scale: 3"=1'-0"



**17 Elevation @ Typical Restroom**  
Scale: 3/8"=1'-0"

**NOTES:**  
1. FABRICATOR TO SUBMIT SHOP DRAWINGS SHOWING ALL MATERIALS, COLORS, CONNECTIONS, STRUCTURE, ETC., FOR APPROVAL PRIOR TO FABRICATION/INSTALLATION.  
2. DESIGNER TO PROVIDE ARTWORK.  
3. SAMPLES OF MATERIALS AND COLORS REQUIRED FOR APPROVAL BEFORE FABRICATION.  
4. CONCEAL ALL FASTENERS—NO ROUND HEADED SCREWS. FINISH TO MATCH ADJACENT SURFACES.  
5. FIELD VERIFY ALL DIMENSIONS, LOCATIONS, MESSAGES, AND SITE CONDITIONS PRIOR TO FABRICATION.  
6. ALL PERMITS AND ENGINEERING (INCLUDING STRUCTURE AND ELECTRICAL) ARE TO BE PROVIDED BY THE SIGN FABRICATOR.  
7. GRAPHICS, TEXT, AND MESSAGES ARE TO BE SUBMITTED BY THE FABRICATOR FOR APPROVAL BY THE OWNER PRIOR TO PRODUCTION.

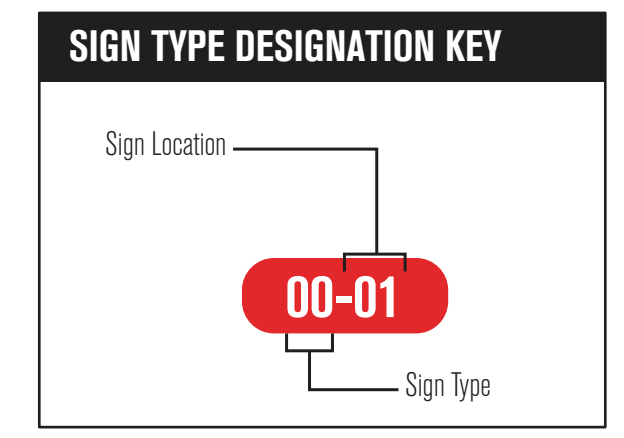
**hord coplan macht**  
LANDSCAPE ARCHITECT / ARCHITECT  
1800 Wazee Street, Suite 450  
Denver, CO 80202  
p. 303.607.0977  
CIVIL ENGINEER / STRUCTURAL ENGINEER  
JVA Incorporated  
1675 Lamar Street, #500  
Denver, CO 80202  
p. 303.444.1951  
ELECTRICAL ENGINEER  
Ackerman Engineering, Inc.  
3000 Yonkers Street, #204  
Wheat Ridge, CO 80151  
p. 303.278.7297  
IRRIGATION  
Avocet Irrigation  
11701 W. Sun-Coyote Ave., Suite F-509  
Littleton, CO 80127  
p. 303.966.2175  
MECHANICAL ENGINEER  
ENVISSION Mechanical Engineers, Inc.  
8777 Federal Court, #500  
Englewood, CO 80112  
p. 303.686.0223

Town of Parker  
**SALISBURY PARK**  
**NORTH - PHASE 1**  
11700 MOTSENBOCKER RD  
PARKER, CO 80134

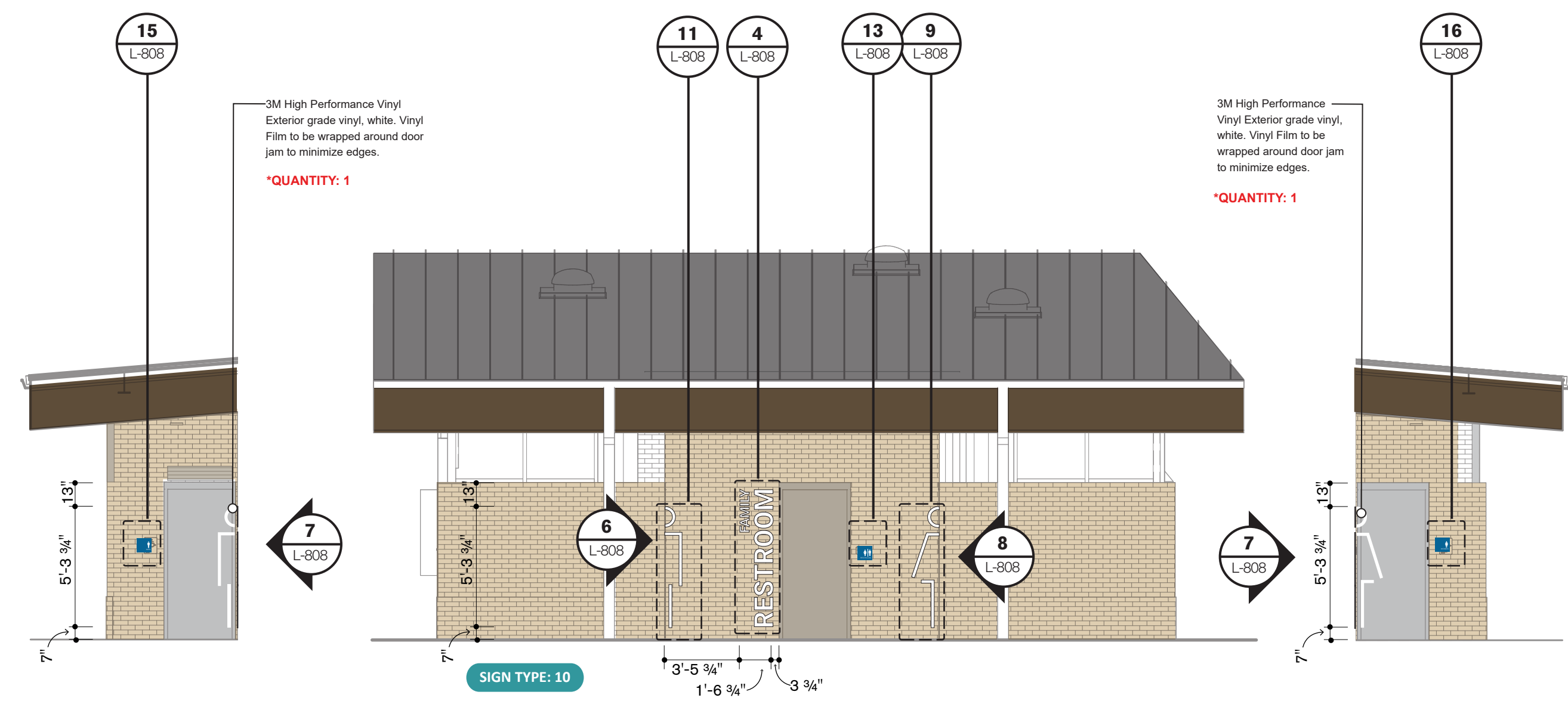
**hord coplan macht**  
ARCHITECTURE  
LANDSCAPE ARCHITECTURE  
PLANNING  
INTERIOR DESIGN

**SIGNAGE LEGEND**

- 01 MAIN MONUMENT SIGNAGE
  - 02 DIGITAL MONUMENT SIGNAGE
  - 03 VEHICULAR DIRECTIONAL
  - 04 PEDESTRIAN DIRECTIONAL
  - 05 DIRECTORY SIGNAGE
  - 06 RULES & REGULATIONS
  - 07 FIELD SIGNAGE
  - 08 PARKING LOT IDENTIFICATION
  - 09 RESTROOM SIGNAGE (LARGE GLYPH & LETTERS)
  - 10 TYPICAL RESTROOM SIGNAGE
  - 11 BUILDING SIGNAGE/ INSTALLATION
- A Removal/ Update of Existing Signage



**C**



**6 Headquarters Restroom Signage**  
Scale: 3/16"=1'-0"

**7 Headquarters Restroom Signage**  
Scale: 3/16"=1'-0"

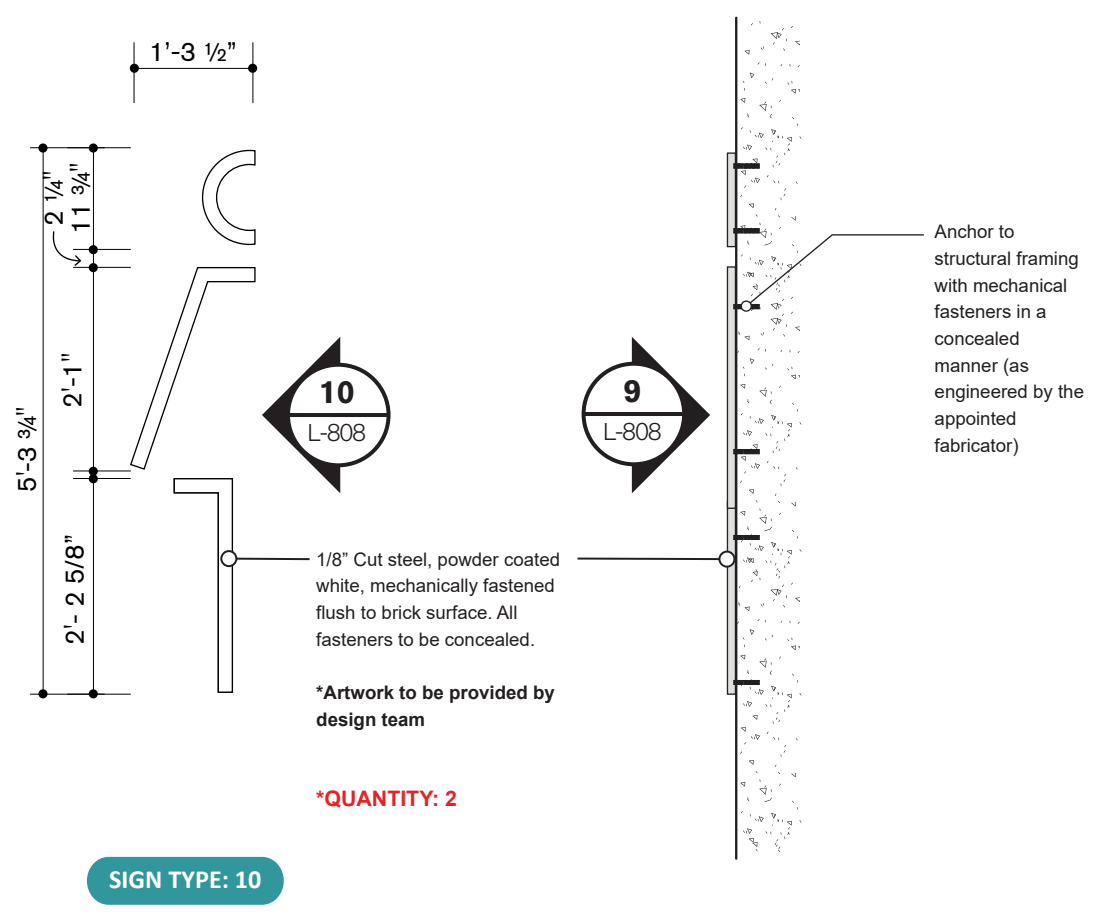
**8 Headquarters Restroom Signage**  
Scale: 3/16"=1'-0"

**9 Women's Restroom Glyph (Front View)**  
Scale: 1/2"=1'-0"

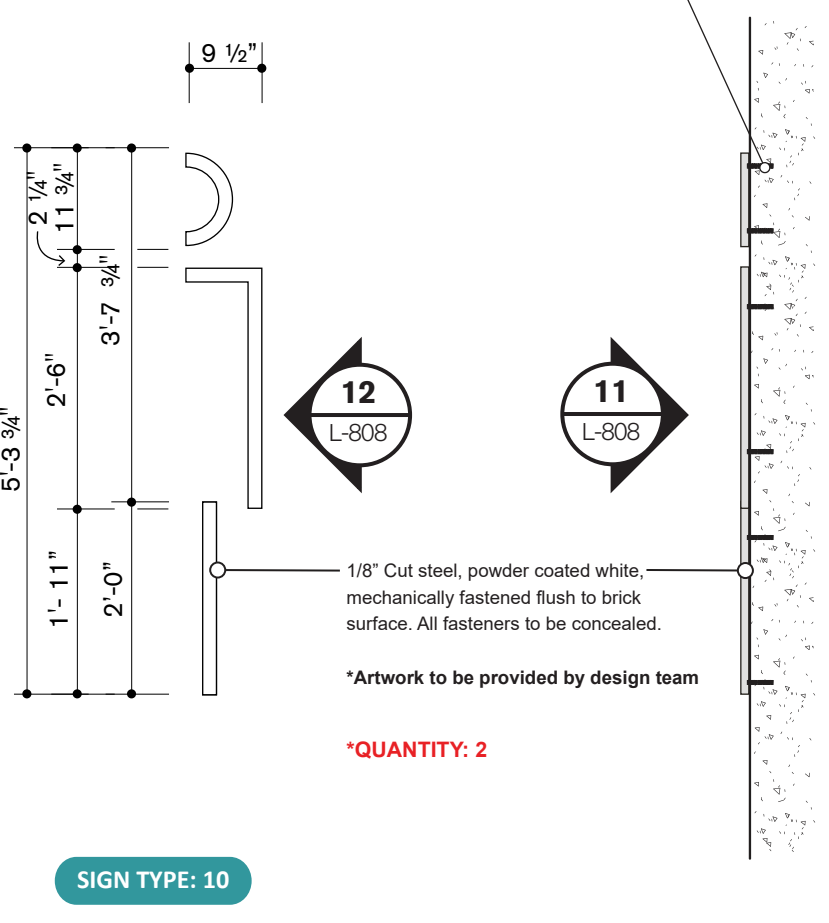
**10 Men's Restroom Glyph (Side View)**  
Scale: 1/2"=1'-0"

**11 Men's Restroom Glyph (Front View)**  
Scale: 1/2"=1'-0"

**12 Men's Restroom Glyph (Side View)**  
Scale: 1/2"=1'-0"

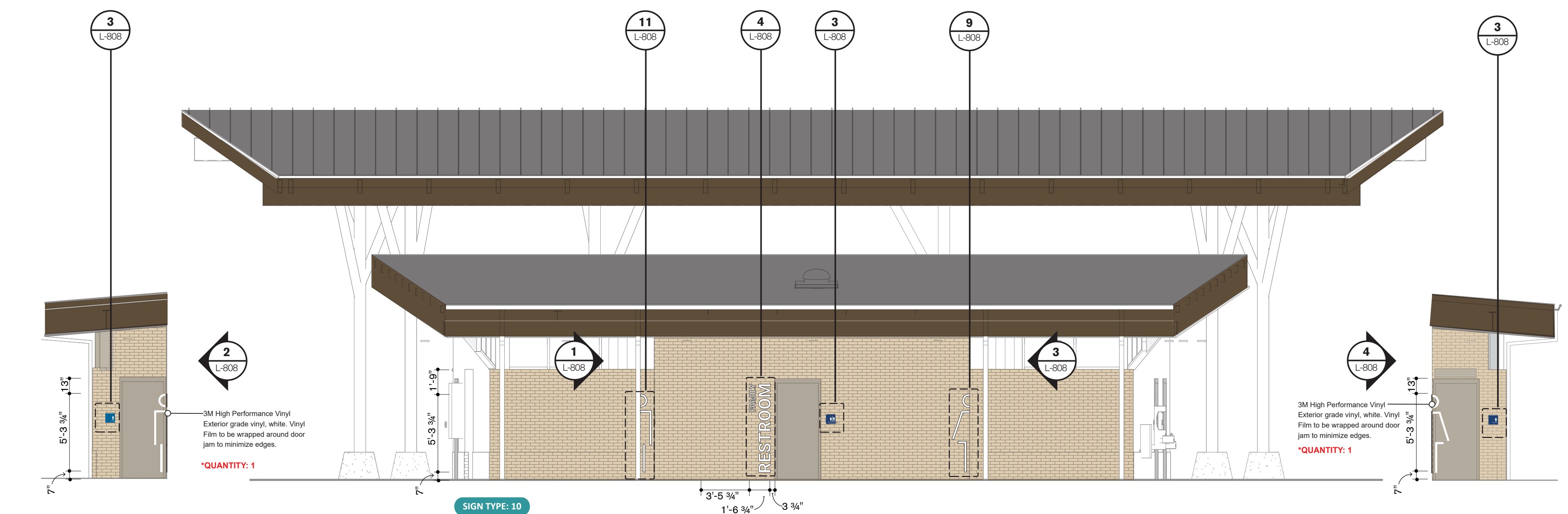


**10 SIGN TYPE: 10**



**11 SIGN TYPE: 10**

**B**



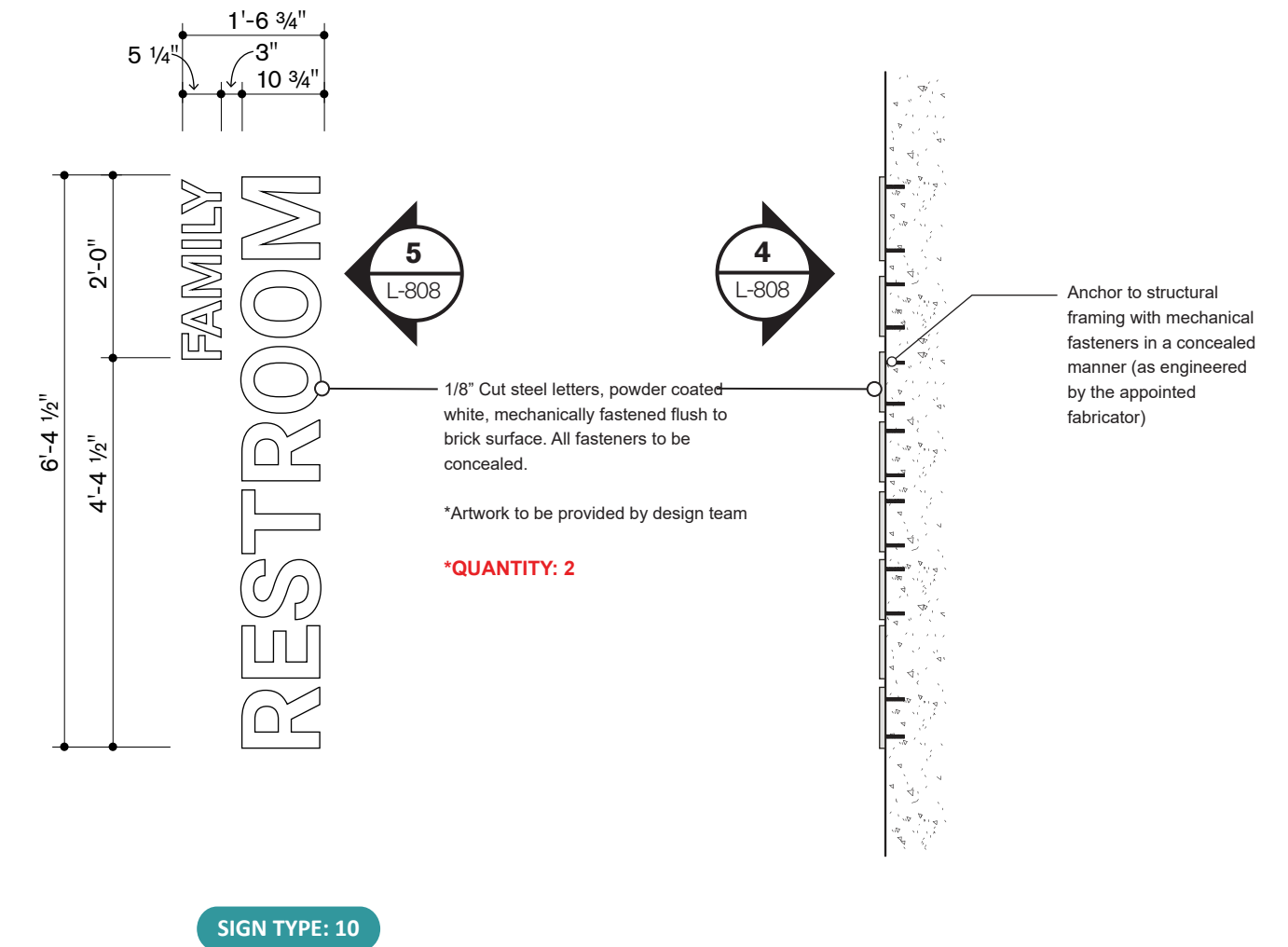
**1 The Hub Restroom Signage**  
Scale: 3/16"=1'-0"

**2 The Hub Restroom Signage**  
Scale: 3/16"=1'-0"

**3 The Hub Restroom Signage**  
Scale: 3/16"=1'-0"

**4 Family Restroom Letters (Front View)**  
Scale: 1/2"=1'-0"

**5 Family Restroom Letters (Side View)**  
Scale: 1/2"=1'-0"



**4 SIGN TYPE: 10**

DATE	DESCRIPTION

Project Number: 223072.00  
Sheet Issue Date: 2024-11-22  
Drawn By: EH, LW, ED, MS, AG  
Checked By: RB, CB, DD  
Key Map

Drawing  
Restroom Signage

**L-808**

SITE PLAN SUBMITTAL



THE SQUARE ABOVE AND COLOR WITH BLACK AND WHITE LETTERS. PRINTED CORRECTLY.  
 THE SQUARE ABOVE AND COLOR WITH BLACK AND WHITE LETTERS. PRINTED CORRECTLY.  
 THE SQUARE ABOVE AND COLOR WITH BLACK AND WHITE LETTERS. PRINTED CORRECTLY.

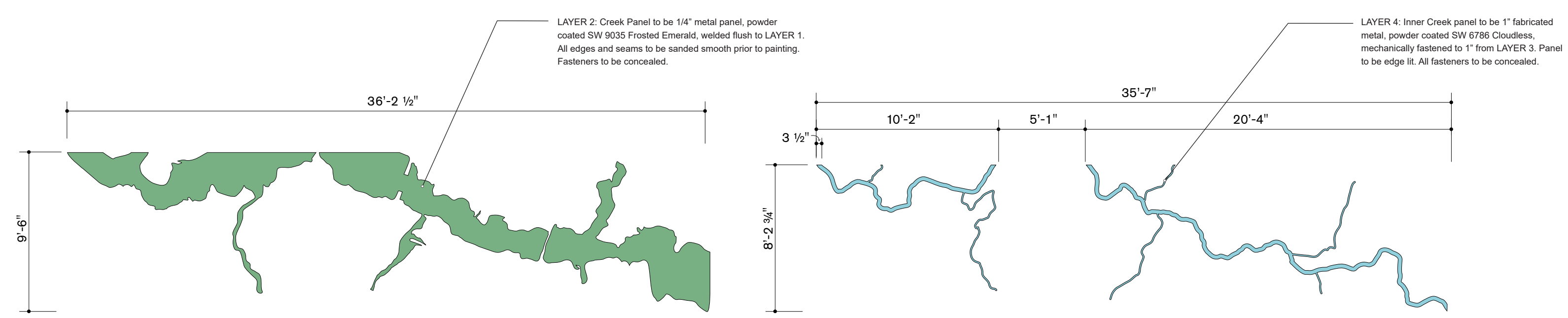
D

K  
J  
I  
H  
G  
F  
E  
D  
C  
B  
A

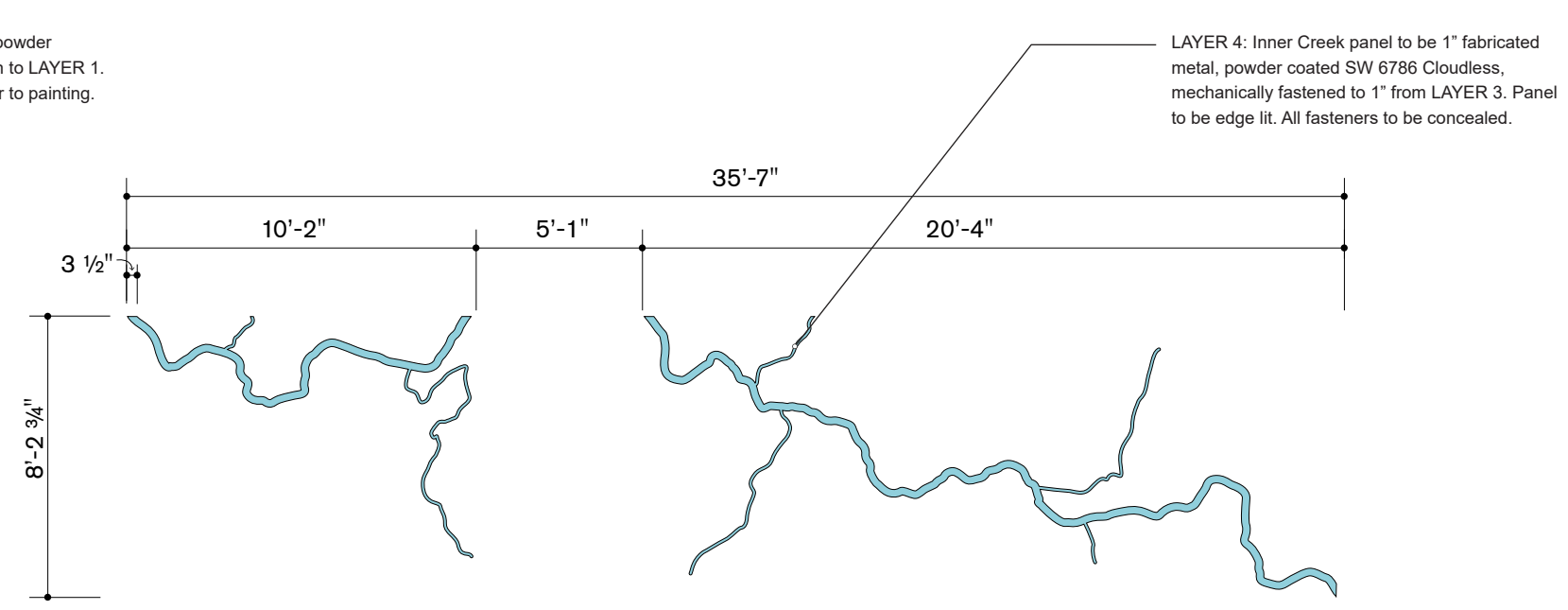
C

B

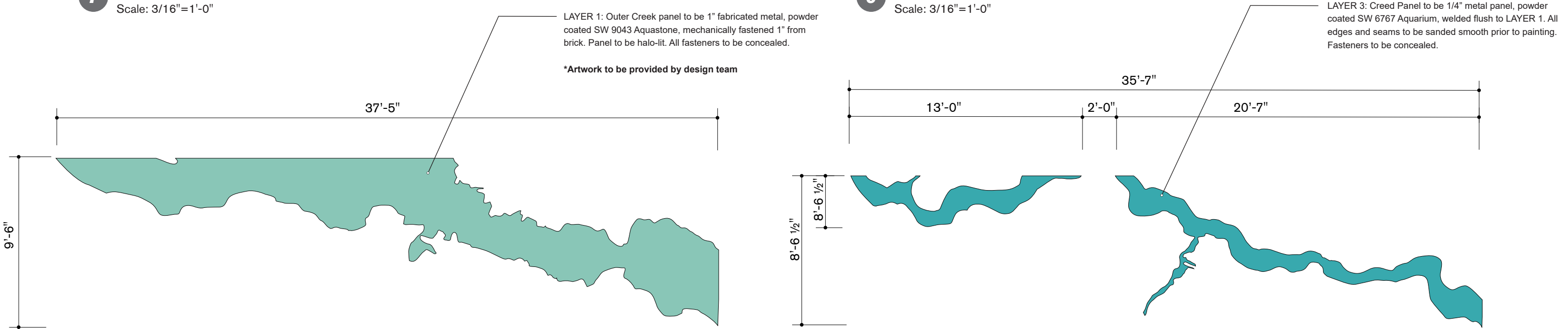
A



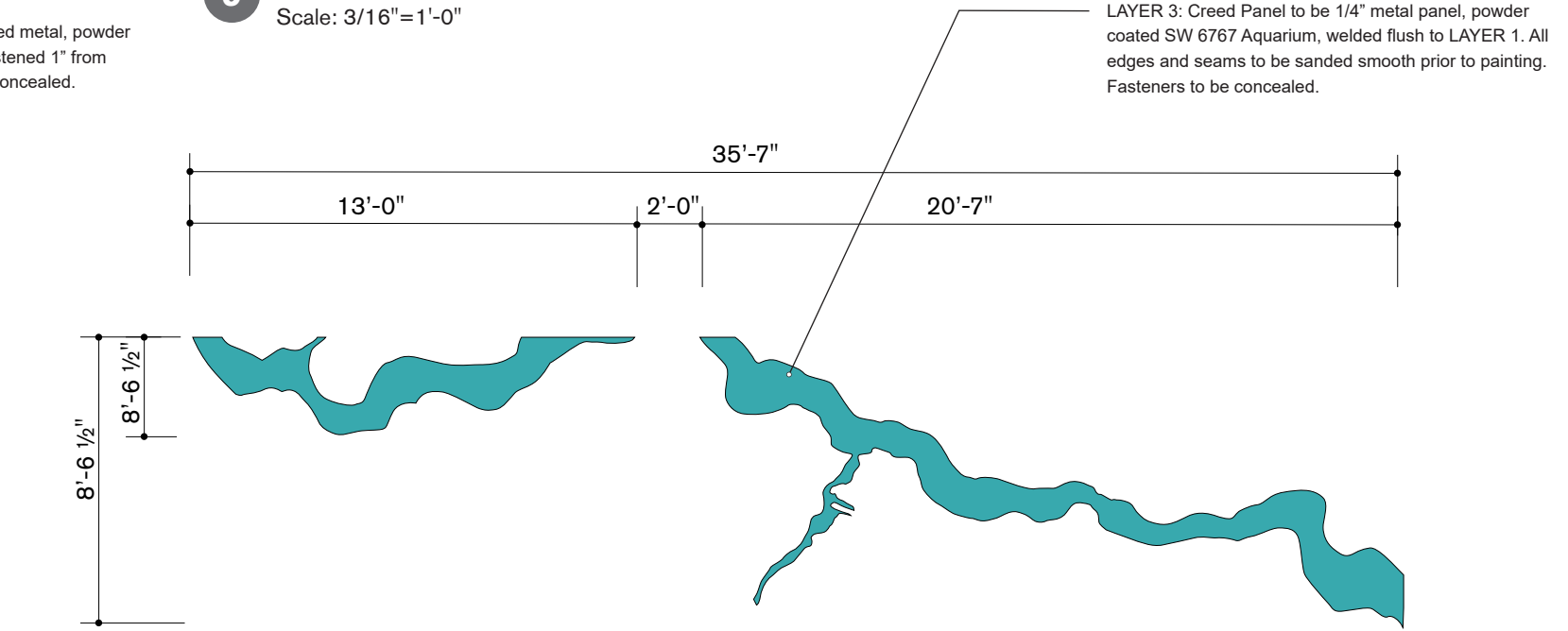
**7 Interpretive Hub Installation - LAYER 2**  
Scale: 3/16"=1'-0"



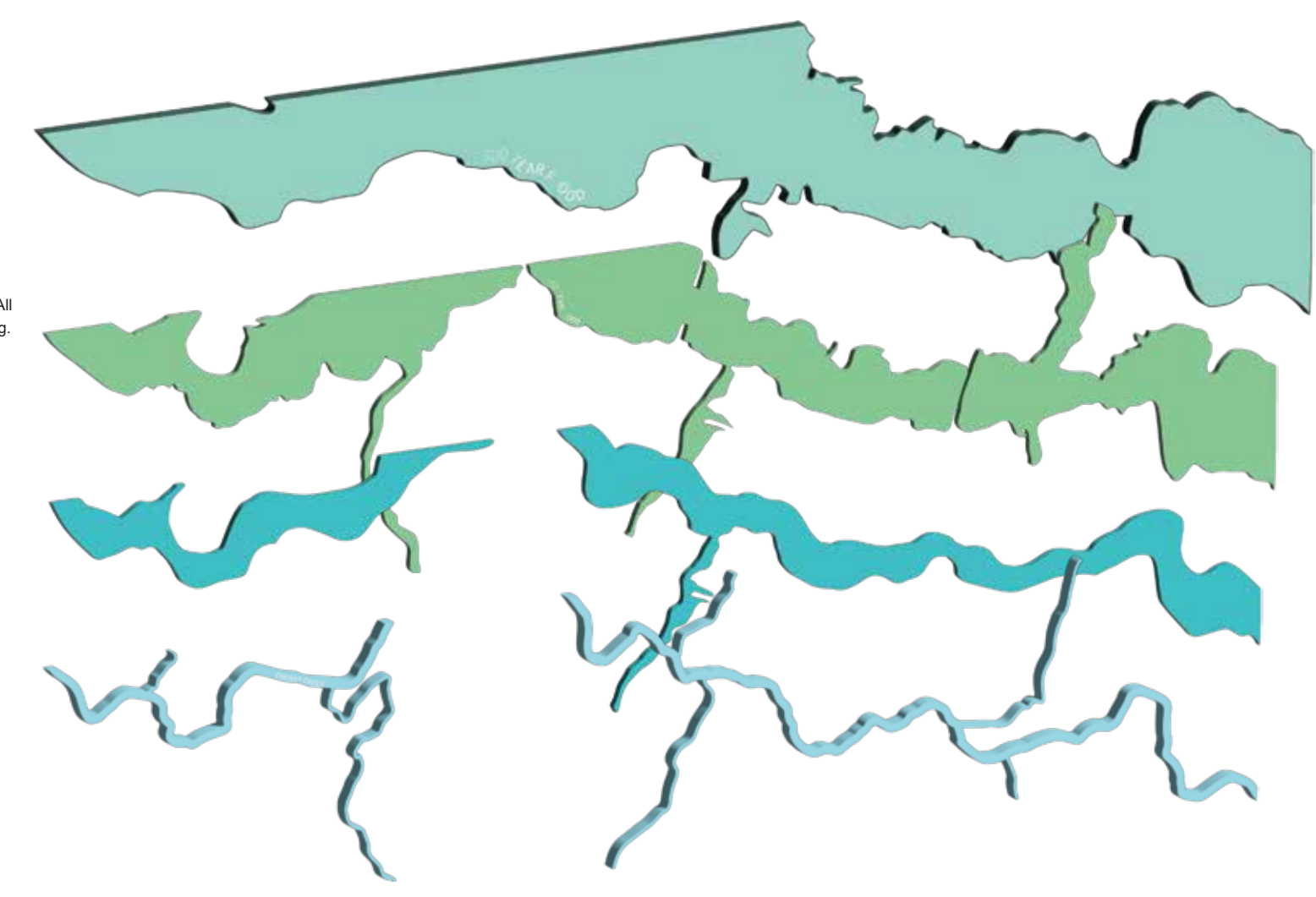
**9 Interpretive Hub Installation - LAYER 4**  
Scale: 3/16"=1'-0"



**6 Interpretive Hub Installation - LAYER 1**  
Scale: 3/16"=1'-0"



**8 Interpretive Hub Installation - LAYER 3**  
Scale: 3/16"=1'-0"



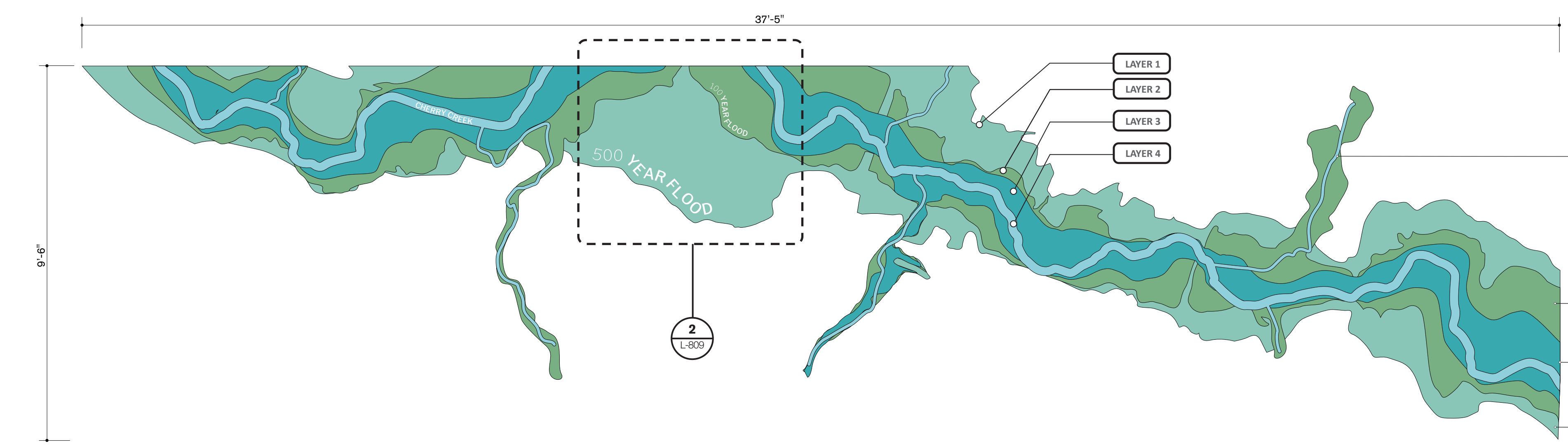
**10 Interpretive Hub Installation - Exploded View**  
Scale: N/A



**12 Precedent Halo-Lit**  
Scale: N/A



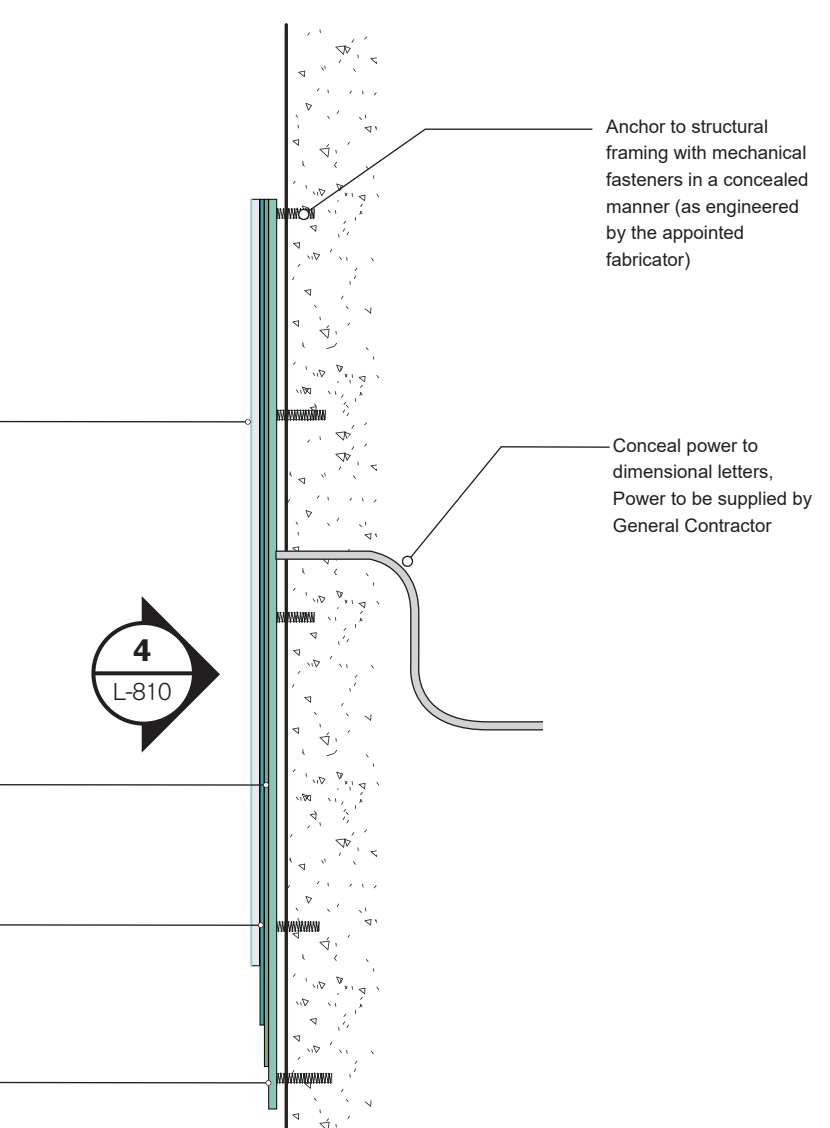
**11 Precedent Edge Lit**  
Scale: N/A



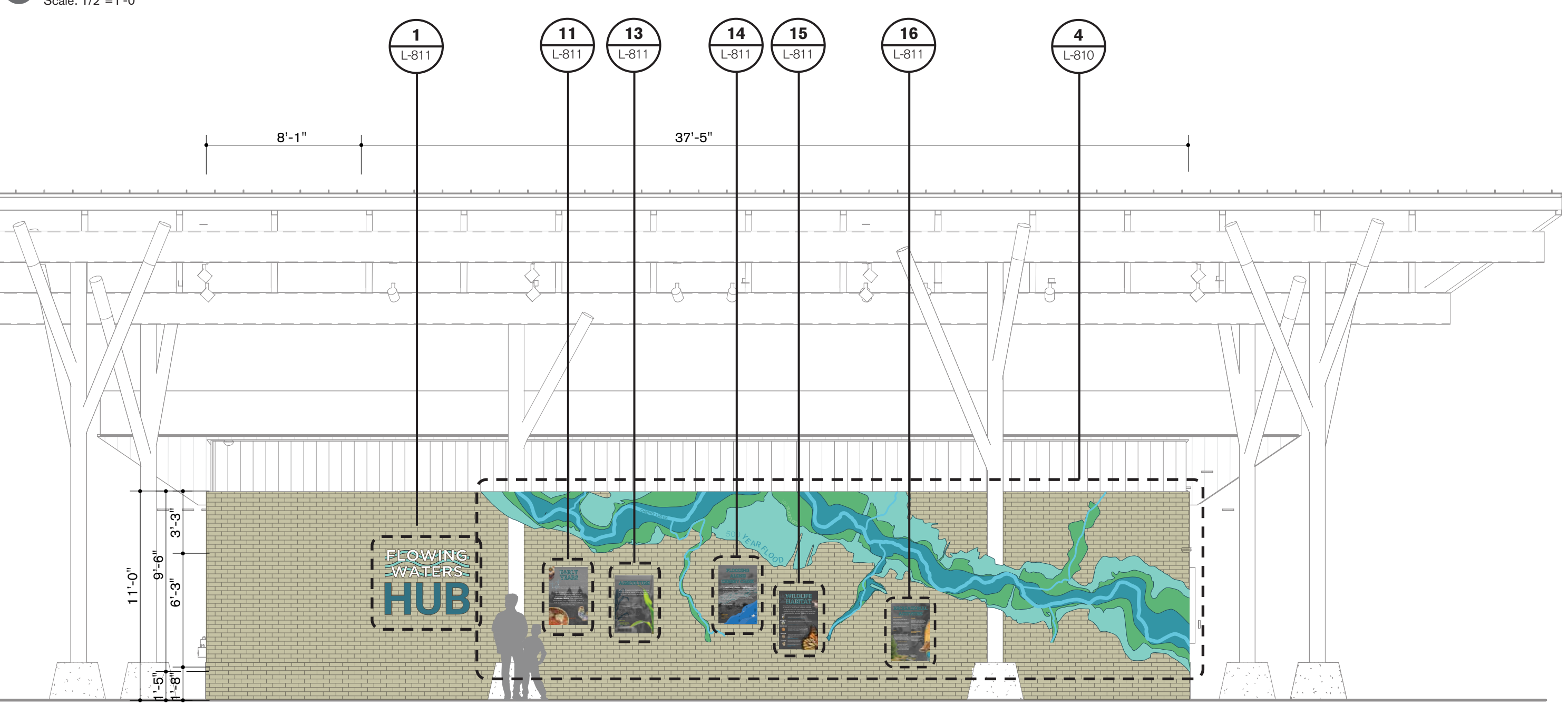
**4 Interpretive Hub Installation**  
Scale: 1/2"=1'-0"

**LAYER 1:** Outer Creek panel to be 1" fabricated metal, powder coated SW 9043 Aquastone, mechanically fastened 1" from brick. Panel to be halo-lit. All fasteners to be concealed.  
**LAYER 2:** Creek Panel to be 1/4" metal panel, powder coated SW 9035 Frosted Emerald, welded flush to LAYER 1. All edges and seams to be sanded smooth prior to painting. Fasteners to be concealed.  
**LAYER 3:** Creek Panel to be 1/4" metal panel, powder coated SW 6767 Aquarium, welded flush to LAYER 1. All edges and seams to be sanded smooth prior to painting. Fasteners to be concealed.  
**LAYER 4:** Inner Creek panel to be 1" fabricated metal, powder coated SW 6786 Cloudless, mechanically fastened to 1" from LAYER 3. Panel to be edge lit. All fasteners to be concealed.

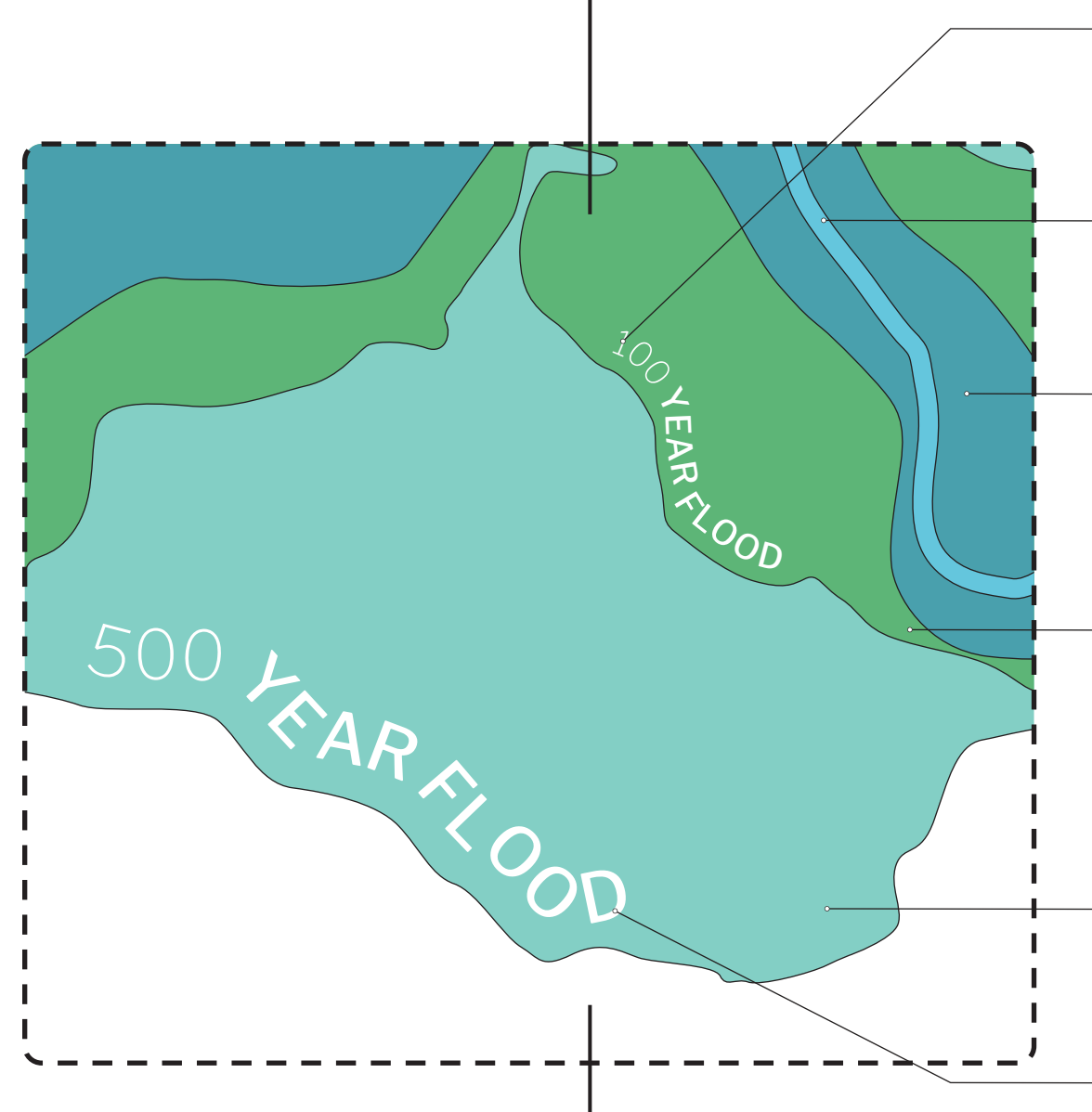
\*Artwork to be provided by design team



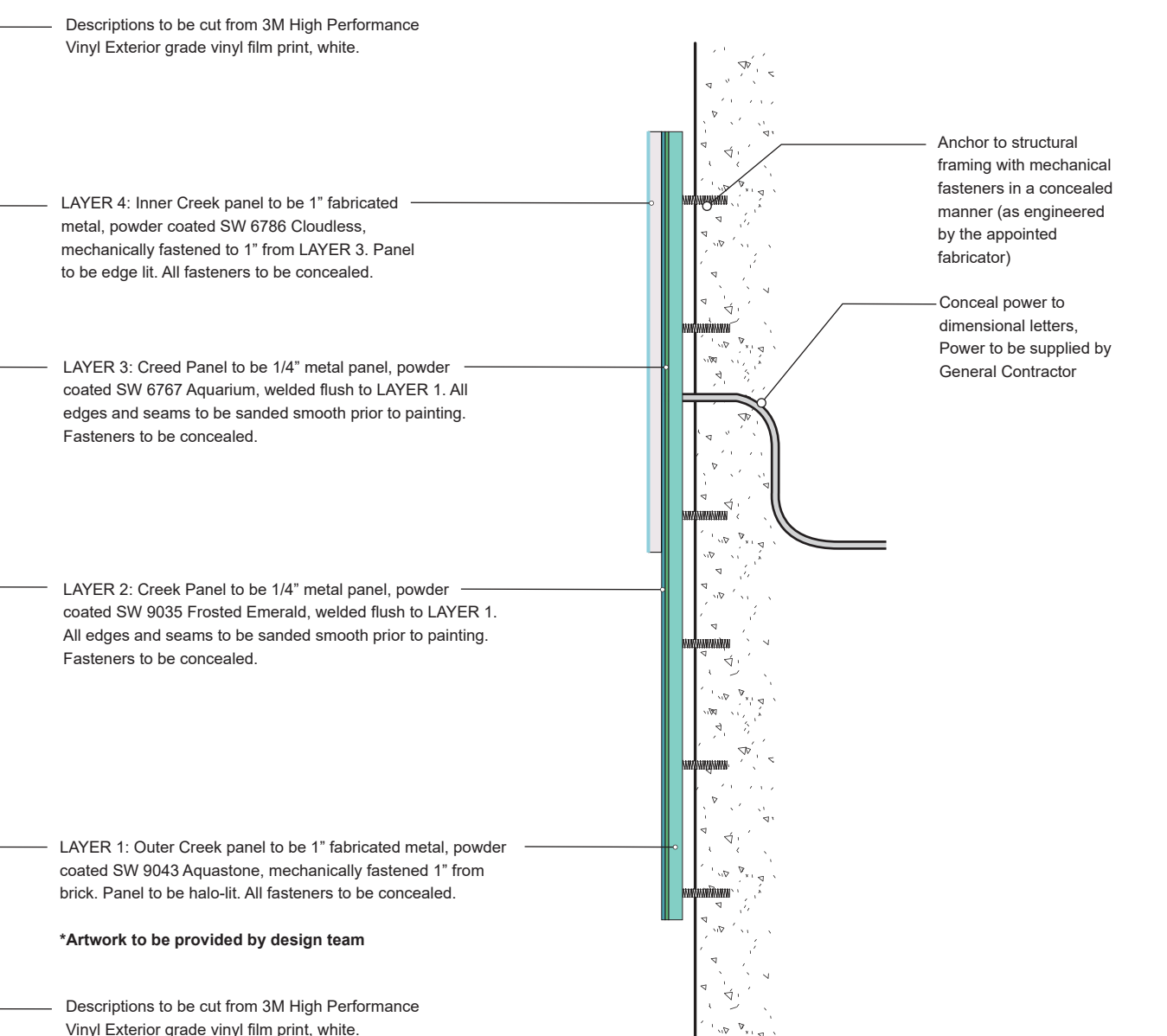
**5 Interpretive Hub Installation**  
Scale: 1/2"=1'-0"



**1 Hub Elevation - West**  
Scale: 3/16"=1'-0"



**2 Interpretive Hub Installation Detail (Front View)**  
Scale: 1"=1'-0"



**3 Interpretive Hub Installation Detail (Section Cut)**  
Scale: 1"=1'-0"

**hord coplan macht**

**LANDSCAPE ARCHITECT / ARCHITECT**  
 1800 Wazee Street, Suite 450  
 Denver, CO 80202  
 p. 303.607.0977  
**CIVIL ENGINEER / STRUCTURAL ENGINEER**  
 JVA Incorporated  
 1675 Lamar Street, #650  
 Denver, CO 80202  
 p. 303.444.1991  
**ELECTRICAL ENGINEER**  
 Ackerman Engineering, Inc.  
 3000 Yonkers Street, #204  
 Wheat Ridge, CO 80151  
 p. 303.278.7297  
**IRRIGATION**  
 Avocet Irrigation  
 11251 W. Gore Ave., Suite F-509  
 Littleton, CO 80127  
 p. 303.986.2175  
**MECHANICAL ENGINEER**  
 ENVISION Mechanical Engineers, Inc.  
 8777 Parnell Court, #500  
 Englewood, CO 80112  
 p. 303.688.0223

Town of Parker  
**SALISBURY PARK**  
**NORTH - PHASE 1**  
 11700 MOTSENBOCKER RD  
 PARKER, CO 80134

**hord coplan macht**

ARCHITECTURE  
 LANDSCAPE ARCHITECTURE  
 PLANNING  
 INTERIOR DESIGN

DATE	DESCRIPTION

Project Number: 223072.00  
 Sheet Issue Date: 2024-11-22  
 Drawn By: EH, LW, ED, MS, AG  
 Checked By: RB, CB, DD  
**Key Map**

Drawing  
 Hub Signage & Installation

**L-810**

SITE PLAN SUBMITTAL

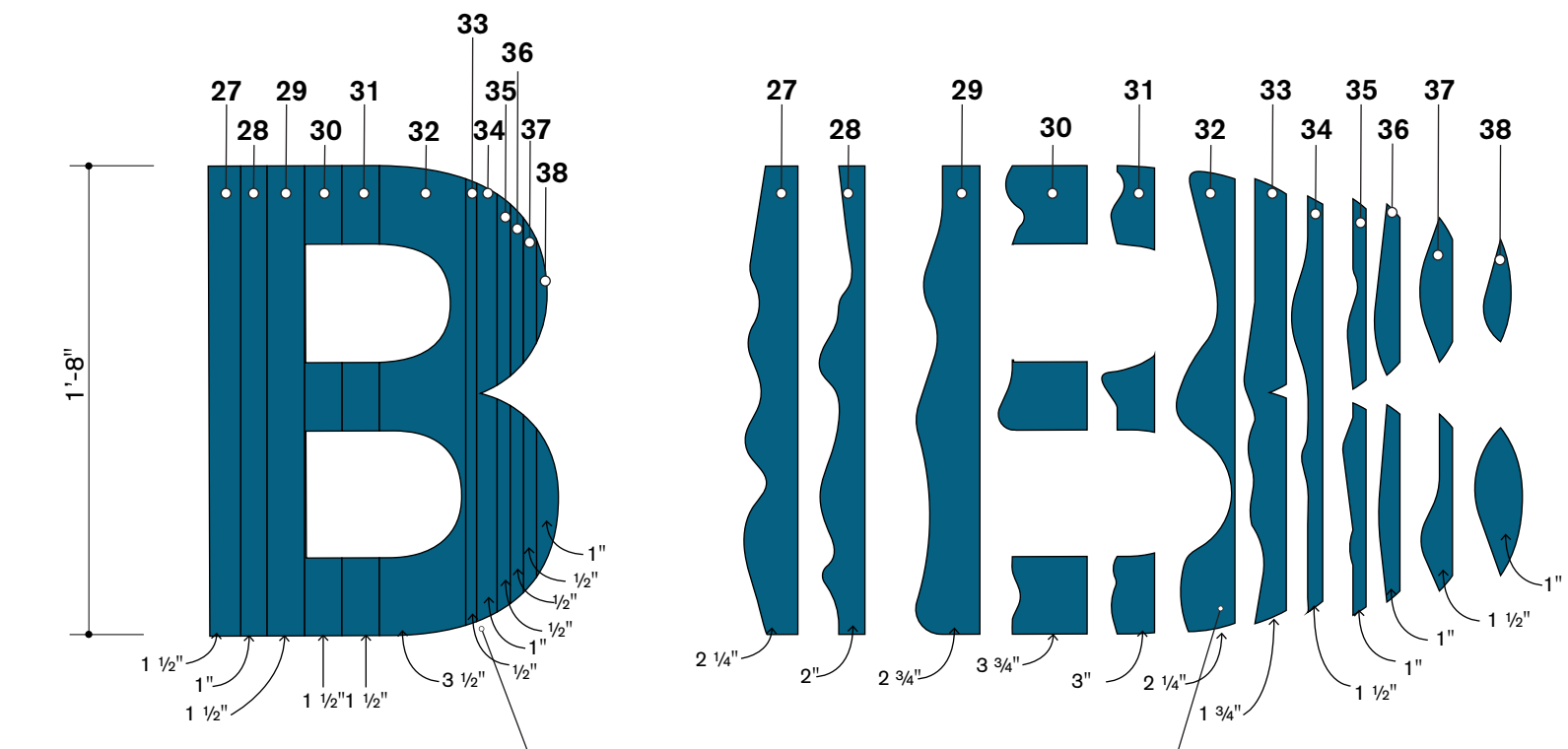
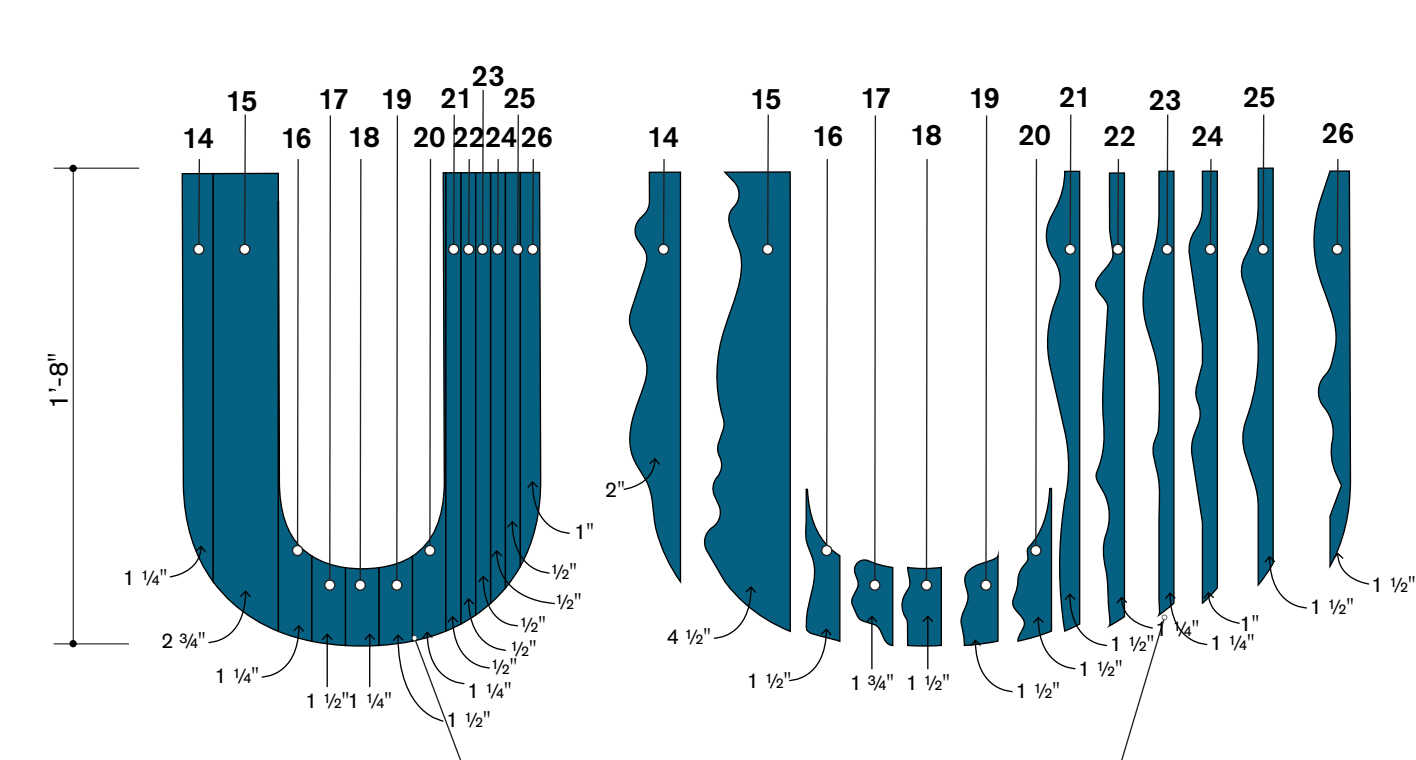
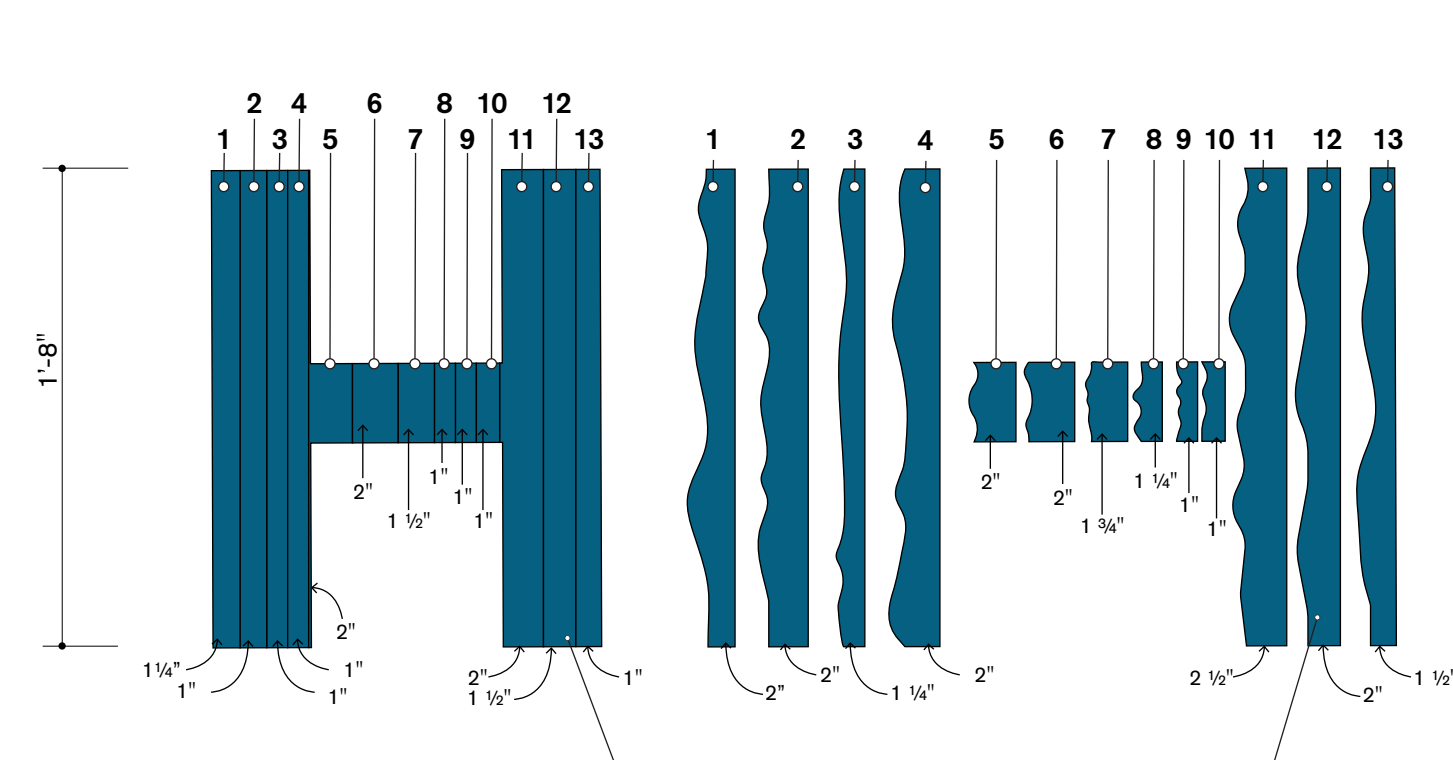
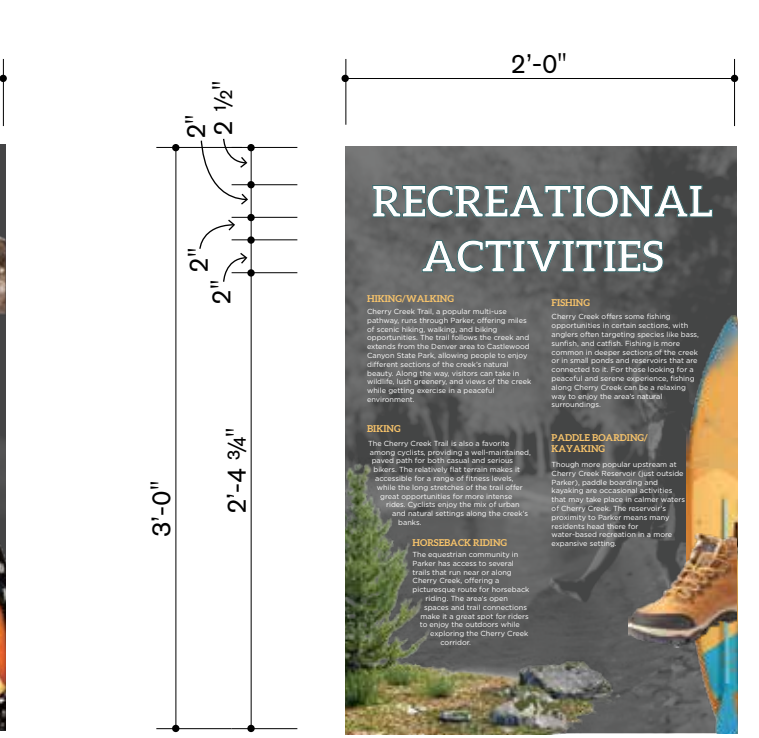
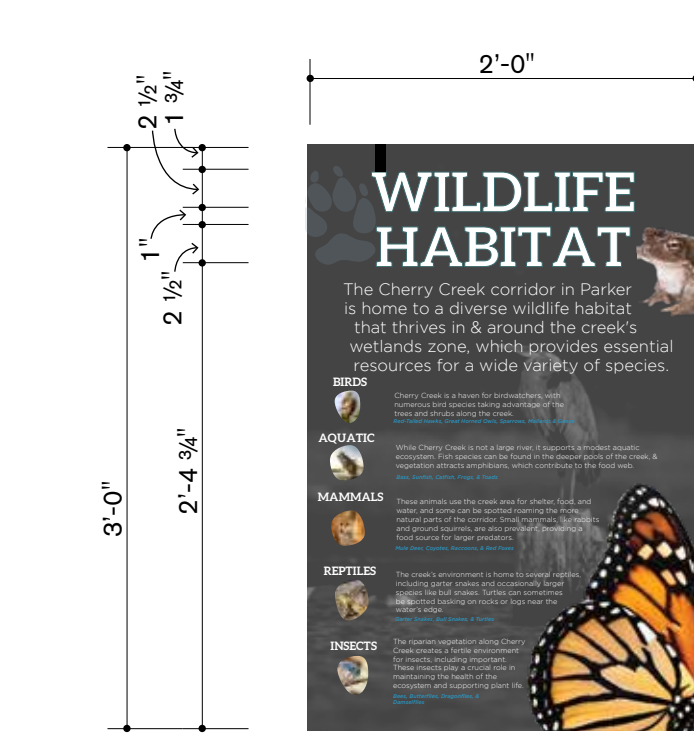
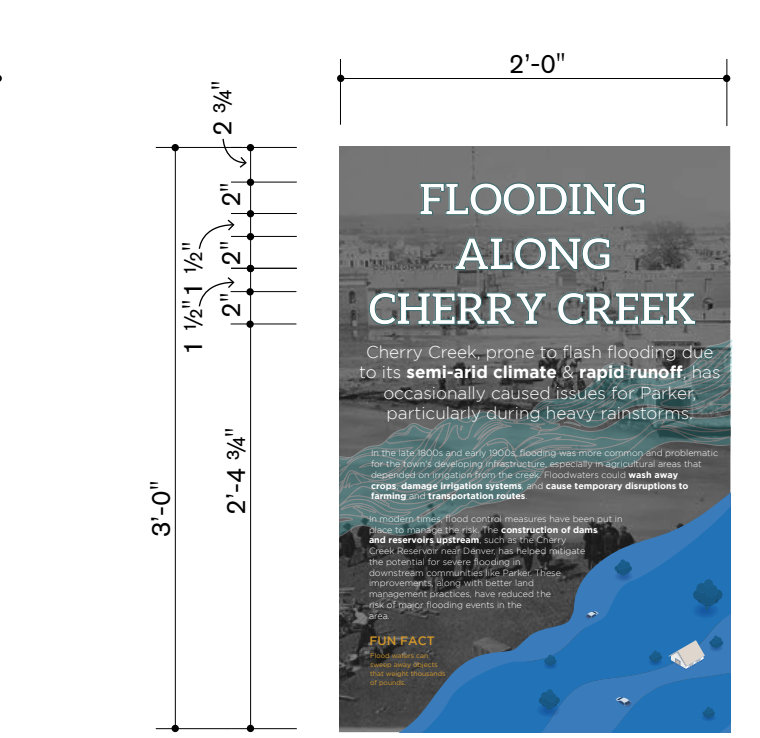
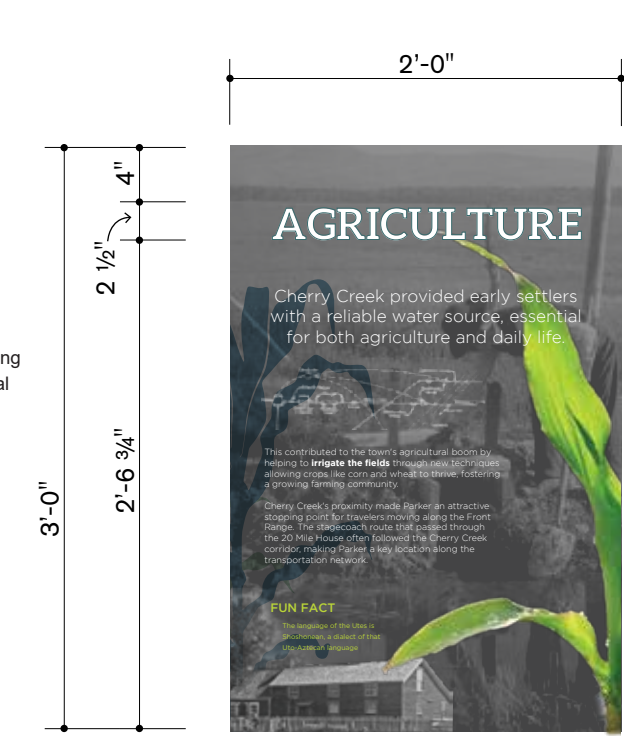
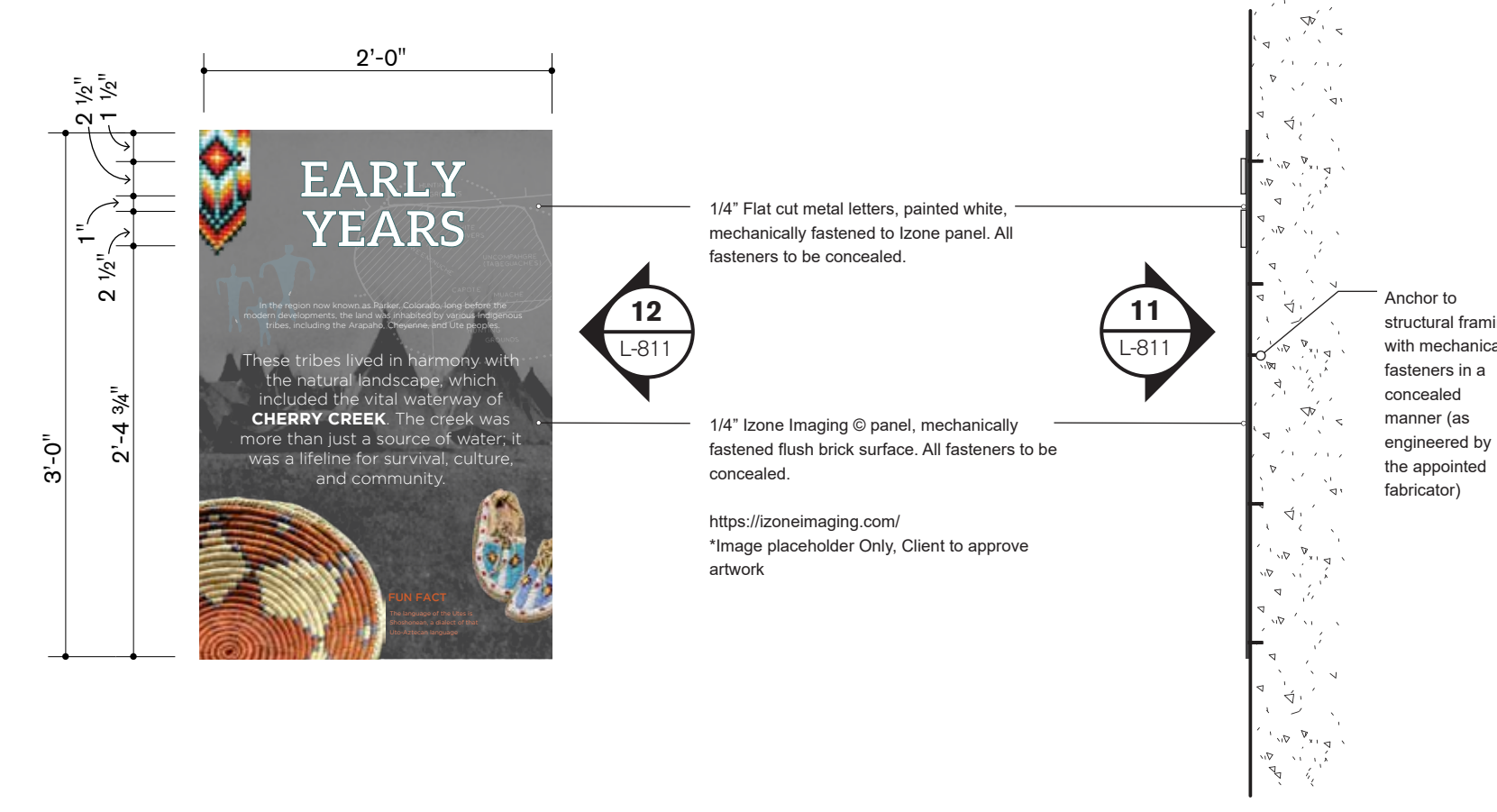
THE SQUARE ABOVE AND COLOR WITH BLACK AND WHITE LETTERS. PRINTED CORRECTLY.  
 THE LINE SHOWN ABOVE IS THIS SHEETS ORIGINAL PAPER SIZE.

D

C

B

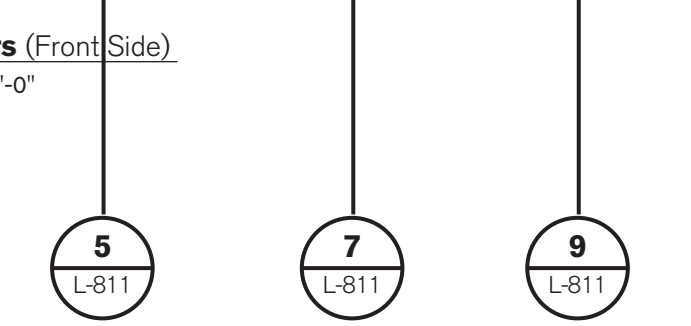
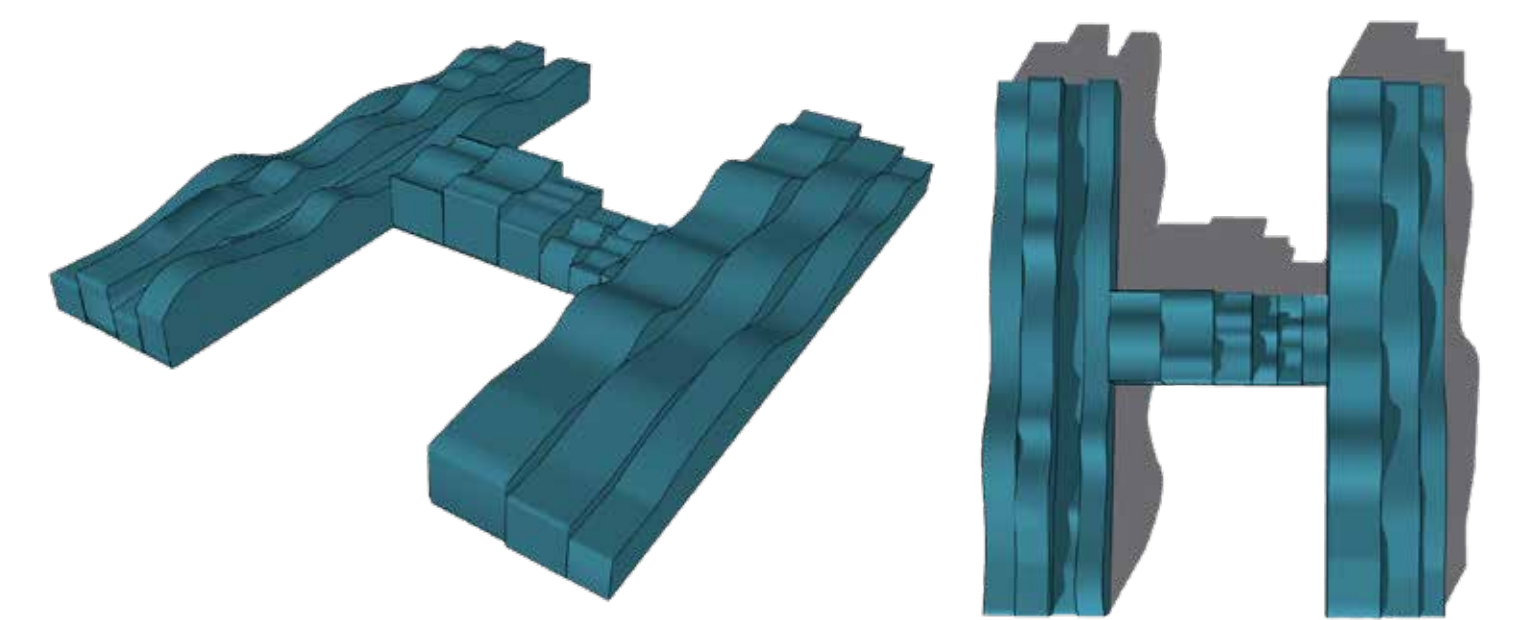
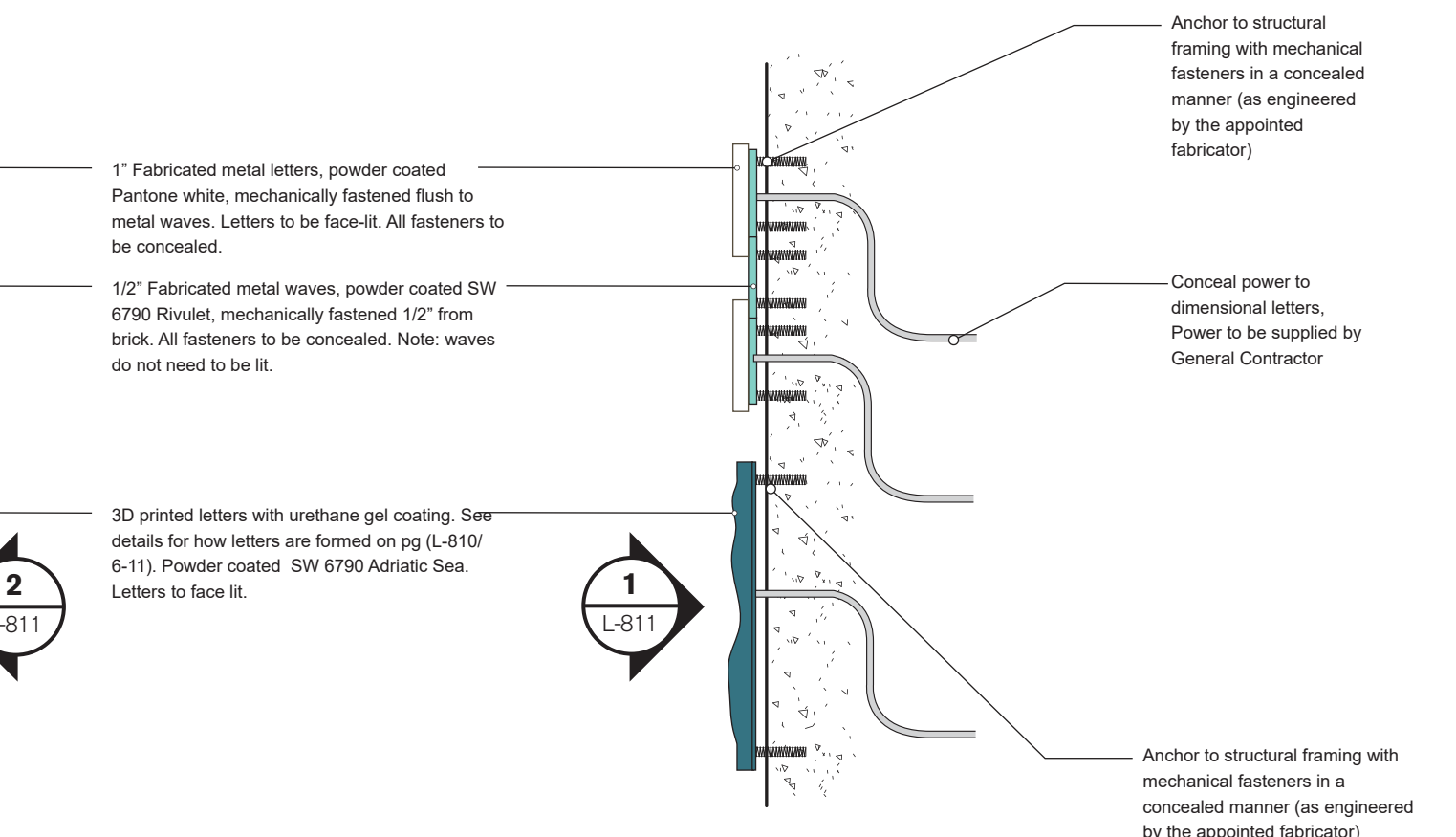
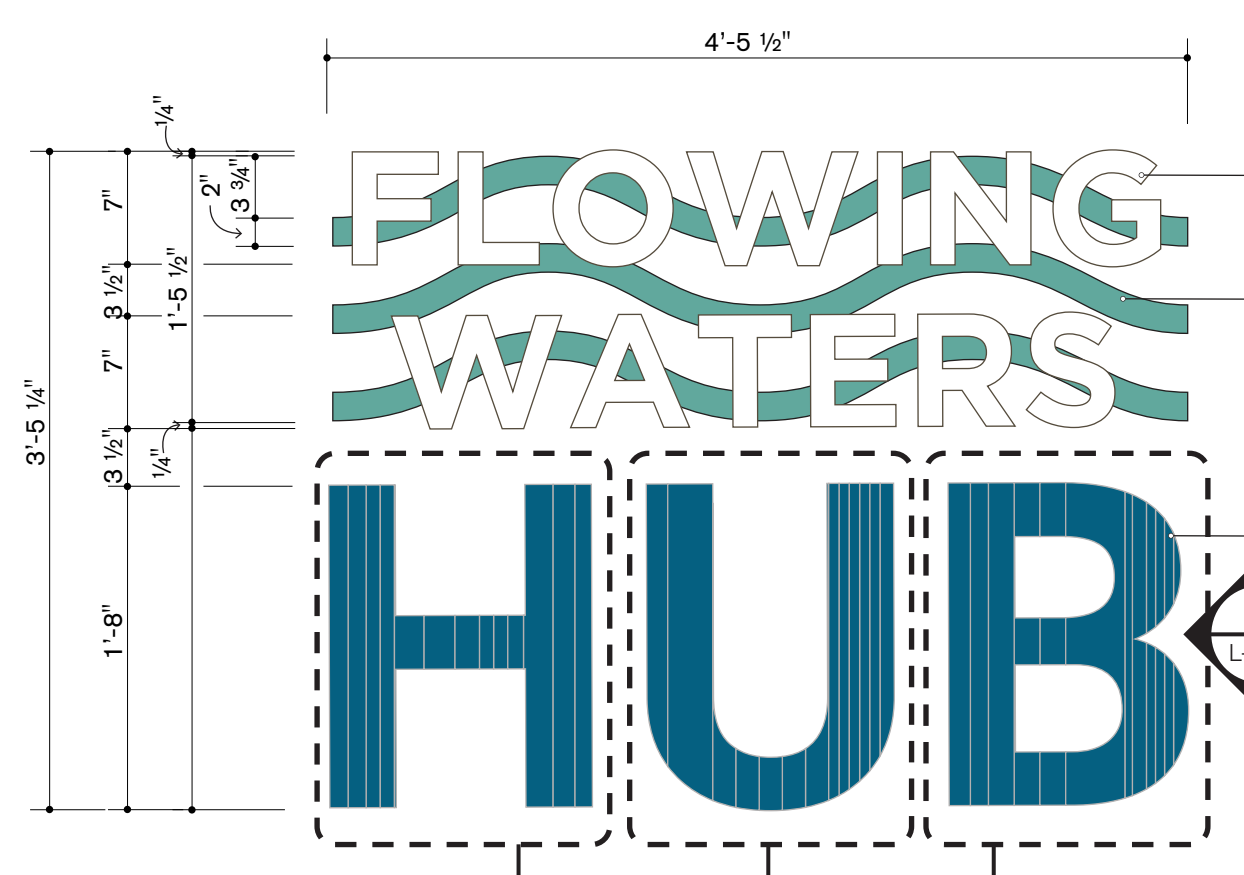
A



Each Hub letters to have dimensional 'wave' profile. See measurements for front View and Side View. Letters to be 3D Printed and coated with urethane gel. Powder coated SW 6790 Adriatic Sea. Letters to face it.

Each Hub letters to have dimensional 'wave' profile. See measurements for front View and Side View. Letters to be 3D Printed and coated with urethane gel. Powder coated SW 6790 Adriatic Sea. Letters to face it.

Each Hub letters to have dimensional 'wave' profile. See measurements for front View and Side View. Letters to be 3D Printed and coated with urethane gel. Powder coated SW 6790 Adriatic Sea. Letters to face it.



**hord coplan macht**  
 LANDSCAPE ARCHITECT / ARCHITECT  
 1800 Wazee Street, Suite 450  
 Denver, CO 80202  
 p. 303.607.0977

CIVIL ENGINEER / STRUCTURAL ENGINEER  
 JVA Incorporated  
 1675 Lamar Street, #500  
 Denver, CO 80202  
 p. 303.444.1991

ELECTRICAL ENGINEER  
 Ackerman Engineering, Inc.  
 3000 Yonkers Street, #204  
 Wheat Ridge, CO 80151  
 p. 303.278.7297

IRRIGATION  
 Avocet Irrigation  
 11201 W. Sunway Ave., Suite F-509  
 Littleton, CO 80127  
 p. 303.986.2175

MECHANICAL ENGINEER  
 ENVISION Mechanical Engineers, Inc.  
 8777 Plover Court, #200  
 Englewood, CO 80112  
 p. 303.686.0223

Town of Parker  
**SALISBURY PARK**  
**NORTH - PHASE 1**  
 11700 MOTSENBOCKER RD  
 PARKER, CO 80134

**hord coplan macht**  
 ARCHITECTURE  
 LANDSCAPE ARCHITECTURE  
 PLANNING  
 INTERIOR DESIGN

DATE	DESCRIPTION

Project Number: 223072.00  
 Sheet Issue Date: 2024-11-22  
 Drawn By: EH, LW, ED, MS, AG  
 Checked By: RB, CB, DD

**Key Map**

Drawing  
 Hub Signage Letters &  
 Interpretive Sign Panels

**L-811**  
 SITE PLAN SUBMITTAL

THE SQUARE ABOVE ARE COLOR WITH BLACK AND WHITE LETTERS. PRINTED CORRECTLY

D

C

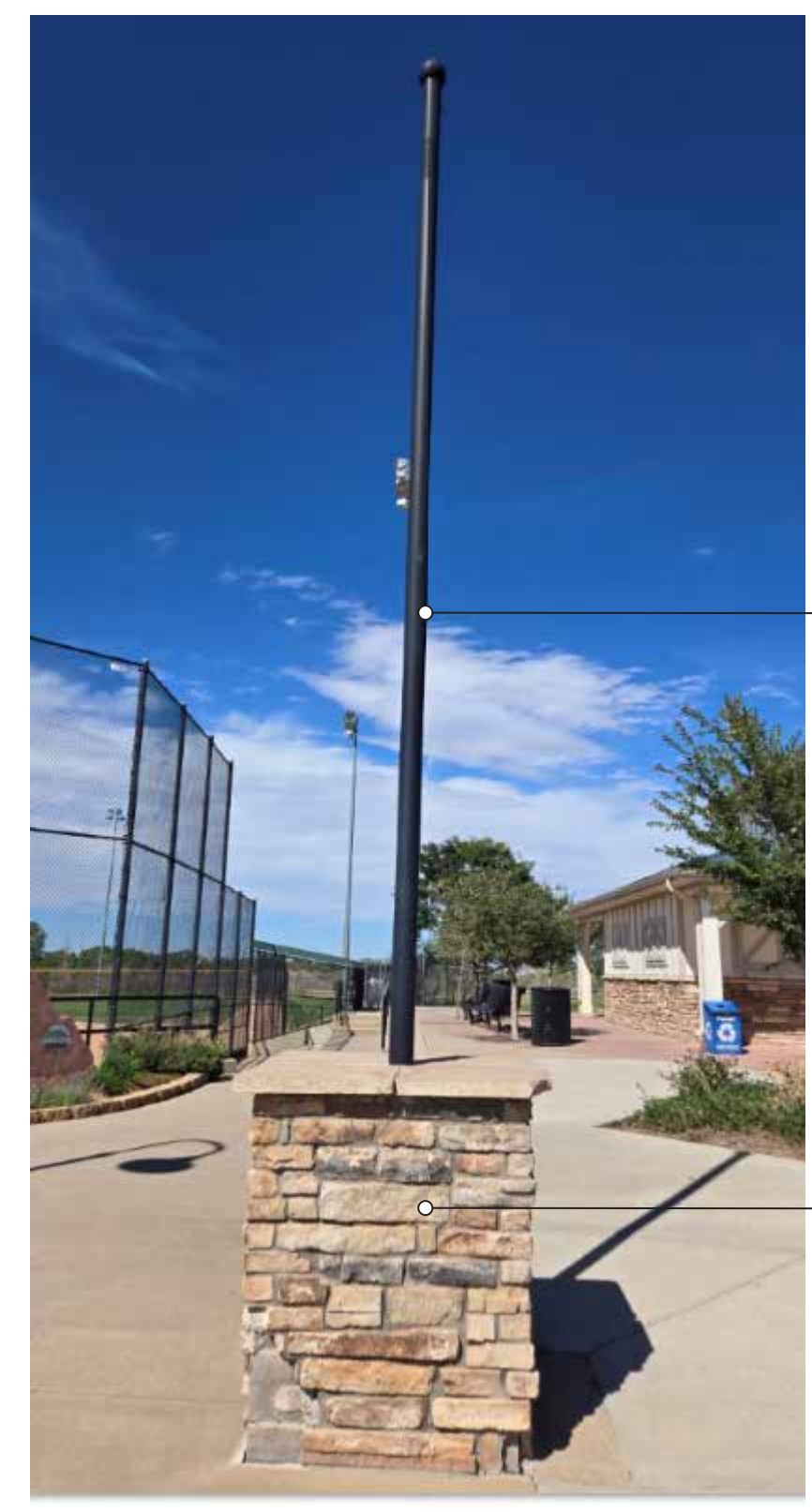
B

A



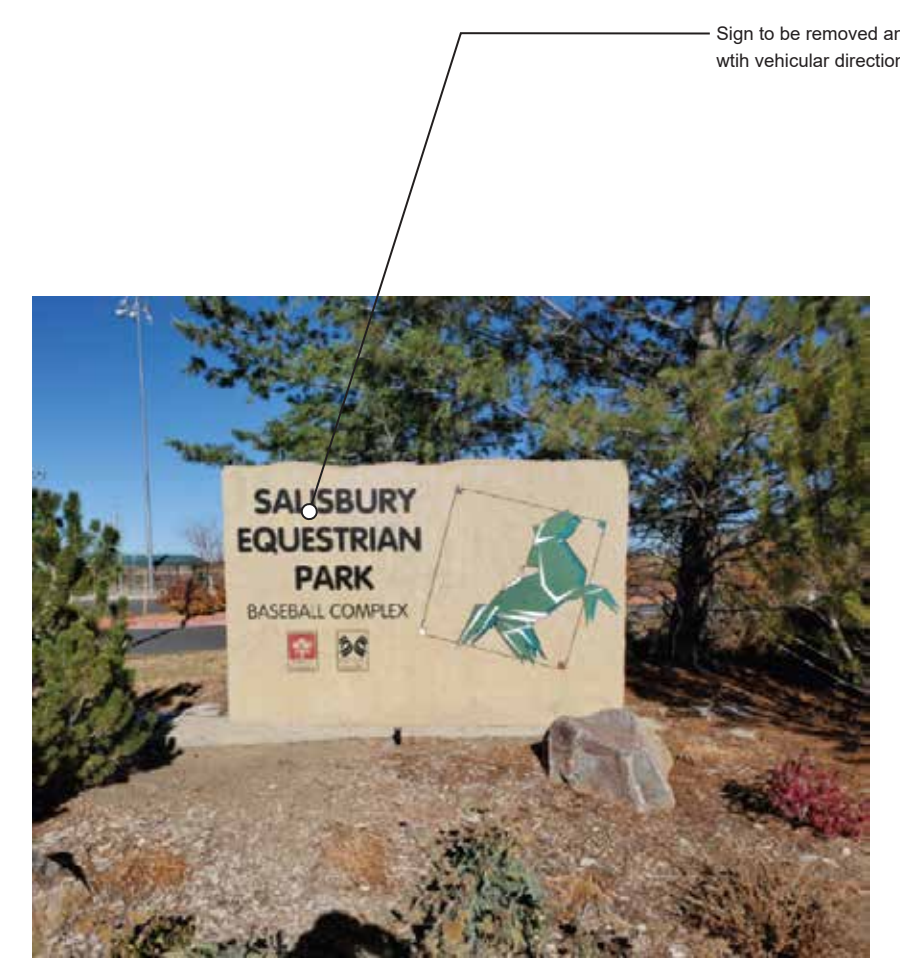
SIGN TYPE: A-04

4 Existing Monument Signage  
Scale: N/A



SIGN TYPE: A-05

5 Existing Banner Pole Signage  
Scale: N/A

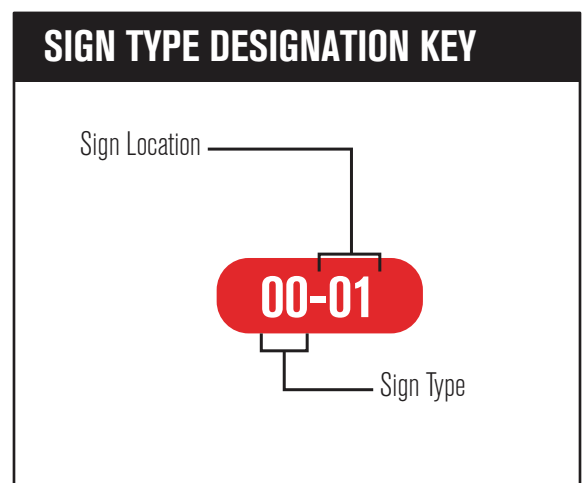


SIGN TYPE: A-06

6 Existing Sign Removal  
Scale:

### SIGNAGE LEGEND

- 01 MAIN MONUMENT SIGNAGE
- 02 DIGITAL MONUMENT SIGNAGE
- 03 VEHICULAR DIRECTIONAL
- 04 PEDESTRIAN DIRECTIONAL
- 05 DIRECTORY SIGNAGE
- 06 RULES & REGULATIONS
- 07 FIELD SIGNAGE
- 08 PARKING LOT IDENTIFICATION
- 09 RESTROOM SIGNAGE (LARGE GLYPH & LETTERS)
- 10 TYPICAL RESTROOM SIGNAGE
- 11 BUILDING SIGNAGE/ INSTALLATION
- A Removal/ Update of Existing Signage



SIGN TYPE: A-01

1 Existing Pedestrian Directional 1  
Scale: N/A



SIGN TYPE: A-02

2 Existing Pedestrian Directional 2  
Scale: N/A



SIGN TYPE: A-03

3 Existing Gateway Renovations  
Scale: N/A

**hord coplan macht**  
LANDSCAPE ARCHITECT / ARCHITECT  
1800 Wazee Street, Suite 450  
Denver, CO 80202  
p. 303.607.0977

CIVIL ENGINEER / STRUCTURAL ENGINEER  
JVA Incorporated  
1675 Lamar Street, #650  
Denver, CO 80202  
p. 303.444.1991

ELECTRICAL ENGINEER  
Ackerman Engineering, Inc.  
3300 Youngfield Street, #204  
Wheat Ridge, CO 80215  
p. 303.278.7297

IRRIGATION  
Avocet Irrigation  
11251 W. Sun-Coyote Ave., Suite F-509  
Littleton, CO 80127  
p. 303.966.2175

MECHANICAL ENGINEER  
ENWISON Mechanical Engineers, Inc.  
8777 Pinyon Court, #300  
Englewood, CO 80112  
p. 303.688.0223

Town of Parker  
**SALISBURY PARK**  
**NORTH - PHASE 1**  
11700 MOTSENBOCKER RD  
PARKER, CO 80134

**hord coplan macht**  
ARCHITECTURE  
LANDSCAPE ARCHITECTURE  
PLANNING  
INTERIOR DESIGN

DATE	DESCRIPTION

Project Number: 223072.00  
Sheet Issue Date: 2024-11-22  
Drawn By: EH, LW, ED, MS, AG  
Checked By: RB, CB, DD

Key Map

Drawing  
Existing Signage

**L-812**  
SITE PLAN SUBMITTAL

