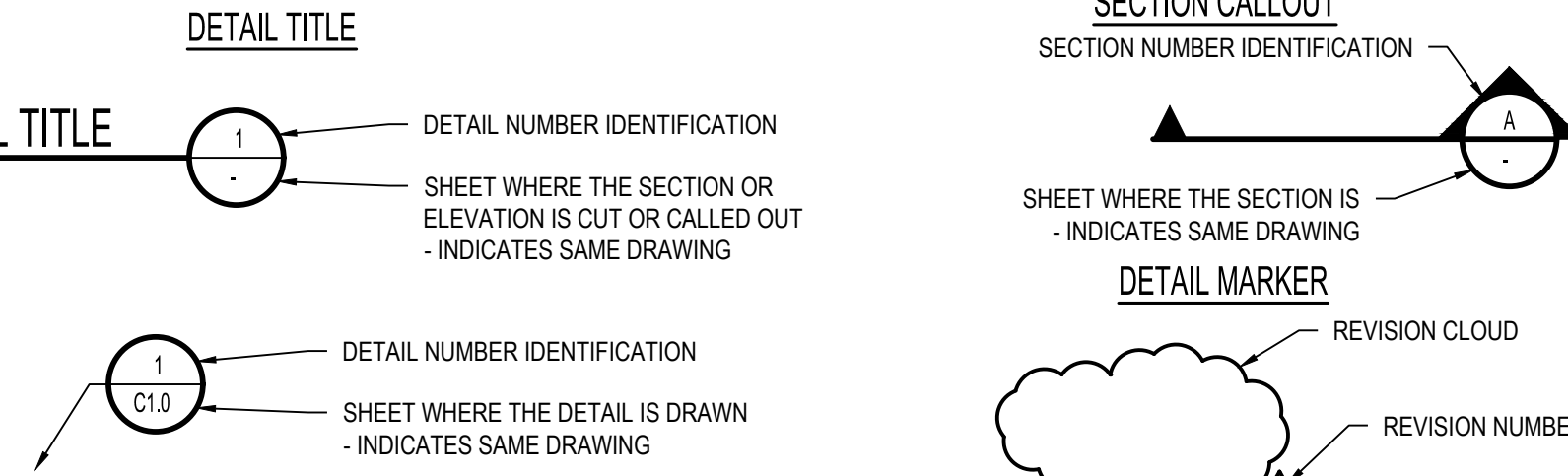


ABBREVIATIONS

Table of abbreviations for various engineering and construction terms, including AASHTO, ABAN, ADDL, etc., and their corresponding full names.

DESIGN LEGEND

Table of design symbols and their corresponding descriptions, such as BENCHMARK, MANHOLE, AREA DRAIN, etc.



SURVEY LEGEND

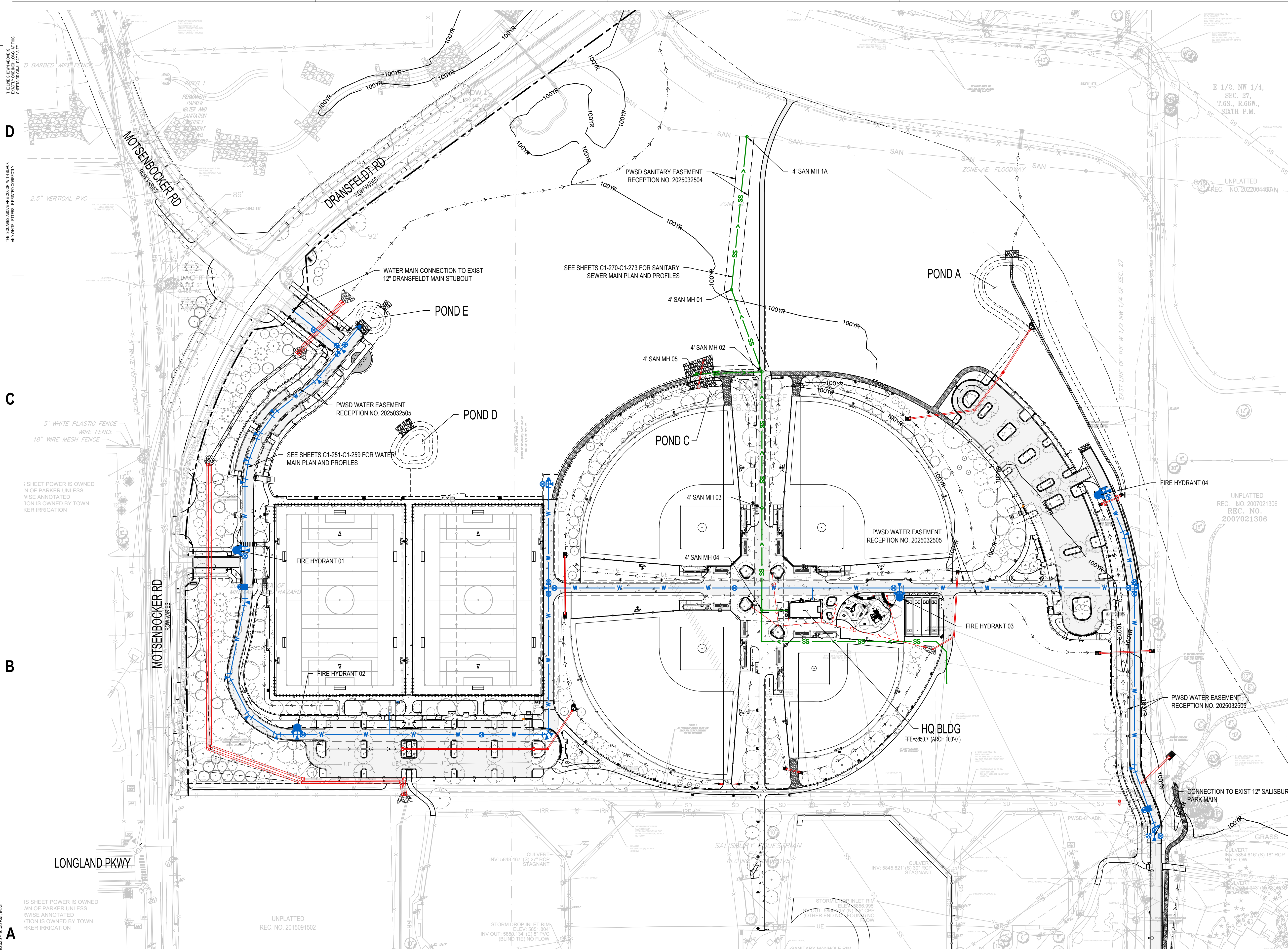
Table of survey symbols and their corresponding descriptions, including WATER LINE, WATER VALVE, FIRE HYDRANT, etc.

GENERAL NOTES

- List of general notes detailing project requirements, standards, and procedures, including notes on materials, construction, and safety.

APPROVED
Aug 18 2025
PARKER WATER AND SANITATION DISTRICT

Project information block including client name (hord | coplan | macht), project name (SALISBURY REGIONAL PARK - PHASE 1), drawing title (LEGEND, NOTES, & ABBREVIATIONS), and drawing number (C-001).



- UTILITY NOTES:**
1. CONTRACTOR TO FIELD VERIFY ALL EXISTING UNDERGROUND UTILITIES PRIOR TO CONSTRUCTION. REFER TO GENERAL NOTES FOR UTILITY LOCATION AND PROTECTION.
 2. CONTRACTOR TO POTHOLE EXISTING UTILITIES AT PROPOSED UTILITY CROSSINGS IN ROW PRIOR TO CONSTRUCTION.
 3. ALL DRY UTILITY AND ELECTRIC DESIGNS ARE PROVIDED BY OTHERS AND SHOWN FOR REFERENCE ONLY. SEE MEP PLANS AND SPECIFICATIONS AND COORDINATE WITH ALL UTILITY OWNERS AS NEEDED.
 4. CONTRACTOR TO MARK ALL UTILITY STUBS WITH MARKERS.
 5. DESIGN AND CONSTRUCTION MUST COMPLY WITH PWSD UTILITY NOTES.
 6. ANY PROPOSED UTILITY CONNECTION WITHIN AN EXISTING ROADWAY WITHIN PUBLIC RIGHT-OF-WAY WILL REQUIRE A TOWN RIGHT-OF-WAY PERMIT PRIOR TO COMMENCING WORK. THE TOWN REQUIRES CONNECTIONS TO BE BORED TO THE EXTENT POSSIBLE, AND ANY STREET CUT ALLOWED BY THE TOWN WILL BE REQUIRED TO BE PATCHED ACCORDING TO THE TOWN'S CONSTRUCTION STANDARDS AND DETAILS. THE LIMITS OF PATCHING WILL BE DETERMINED BY THE TOWN AT THE TIME OF CONSTRUCTION. THE TOWN OF PARKER DOES NOT ALLOW ROADWAY CLOSURES FOR UTILITY WORK.

hord | coplan | macht
 LANDSCAPE ARCHITECT / ARCHITECT
 1800 Wazee Street, Suite 450
 Denver, CO 80202
 p. 303.607.0977

CIVIL ENGINEER / STRUCTURAL ENGINEER
 JVA Incorporated
 1675 Lowell Street, #550
 Denver, CO 80202
 p. 303.444.1951

ELECTRICAL ENGINEER
 Ackerman Engineering, Inc.
 3200 Youngfield Street, #204
 Wheat Ridge, CO 80215
 p. 303.278.7297

IRRIGATION
 Avocet Irrigation
 11725 W. Ken-Caryl Ave., Suite F-509
 Littleton, CO 80120
 p. 303.986.2175

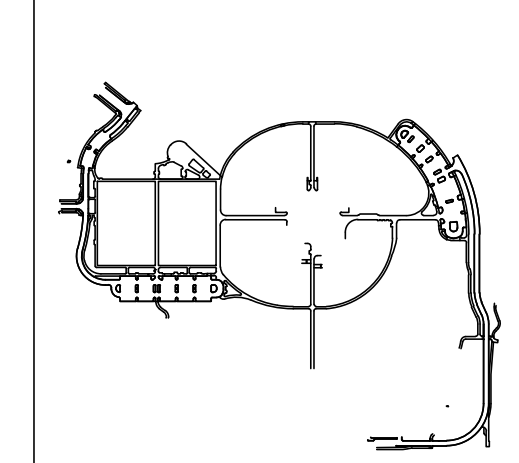
MECHANICAL ENGINEER
 ENVISION Mechanical Engineers, Inc.
 9777 Federal Court, #600
 Greenwood, CO 80112
 p. 303.688.0223

Town of Parker
**SALISBURY REGIONAL
 PARK - PHASE 1**
 11700 MOTSENBOCKER RD
 PARKER, CO 80134

ARCHITECTURE
 LANDSCAPE ARCHITECTURE
 PLANNING
 INTERIOR DESIGN

DATE	DESCRIPTION

Project Number: 223072.00
 Sheet Issue Date: 2025-07-15
 Drawn By: AMF/KAM/MJS
 Checked By: WTP/CWK/CFG



Drawing
**PHASE 1 OVERALL
 UTILITY PLAN**

C1-200

CONTRACT DOCUMENTS

Q:\3732c - Salisbury Park North\Drawings\3732c-02-UTPHASE1-00.dwg, 7/15/2025 - 10:59 AM, MJS

D
C
B
A



THE SQUARES HAVE AN INDICATOR WITH BLACK AND WHITE LETTERS. PRINTED CORRECTLY.

THE SQUARES HAVE AN INDICATOR WITH BLACK AND WHITE LETTERS. PRINTED CORRECTLY.

THE SQUARES HAVE AN INDICATOR WITH BLACK AND WHITE LETTERS. PRINTED CORRECTLY.

THE SQUARES HAVE AN INDICATOR WITH BLACK AND WHITE LETTERS. PRINTED CORRECTLY.

THE SQUARES HAVE AN INDICATOR WITH BLACK AND WHITE LETTERS. PRINTED CORRECTLY.

THE SQUARES HAVE AN INDICATOR WITH BLACK AND WHITE LETTERS. PRINTED CORRECTLY.

THE SQUARES HAVE AN INDICATOR WITH BLACK AND WHITE LETTERS. PRINTED CORRECTLY.

THE SQUARES HAVE AN INDICATOR WITH BLACK AND WHITE LETTERS. PRINTED CORRECTLY.

THE SQUARES HAVE AN INDICATOR WITH BLACK AND WHITE LETTERS. PRINTED CORRECTLY.

THE SQUARES HAVE AN INDICATOR WITH BLACK AND WHITE LETTERS. PRINTED CORRECTLY.

THE SQUARES HAVE AN INDICATOR WITH BLACK AND WHITE LETTERS. PRINTED CORRECTLY.

THE SQUARES HAVE AN INDICATOR WITH BLACK AND WHITE LETTERS. PRINTED CORRECTLY.

APPROVED
 Aug 18 2025
 PARKER WATER AND
 SANITATION DISTRICT

The Town of Parker review constitutes general compliance with the Town's Standards and approved variances, subject to these plans being stamped, signed, and dated by the professional engineer of record. Review by the Town does not constitute approval of the plan design or accuracy and correctness of engineering calculations. Errors in the design or calculations remain the responsibility of the registered professional engineer whose stamp and signature are affixed to this document.

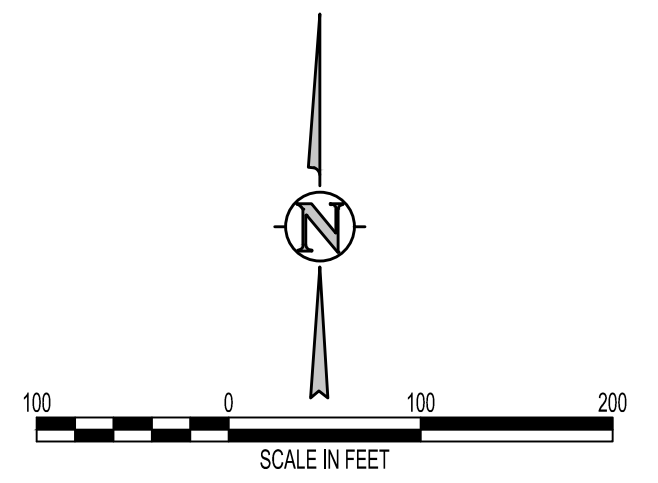
This review does not constitute approval of any private on-site improvements which may be shown. Construction cannot commence until all required drainage/traffic report(s), final development plan(s), special review(s), grading permit, and/or other permits are complete, approved and on file with the Town of Parker.

Town of Parker, Director of Engineering _____ Date _____

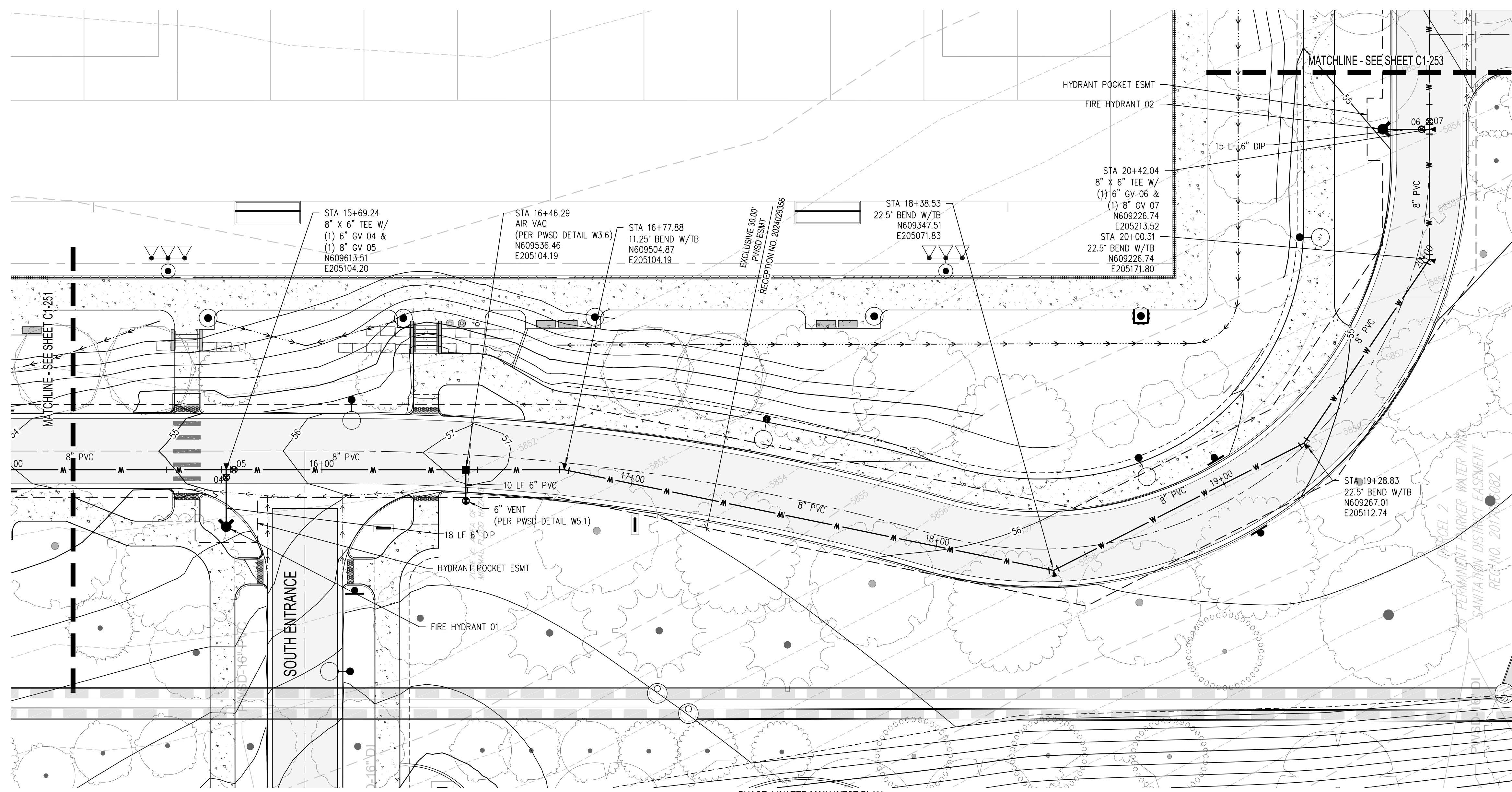
All fire hydrants shall be installed according to water utility standards. The number and locations of the fire hydrants as shown on the Overall Utility Plan are correct as specified by the Town of Parker, Community Development Department.

[Signature]
 Fire Code Official or Designated Representative _____ Date **07/17/2025**

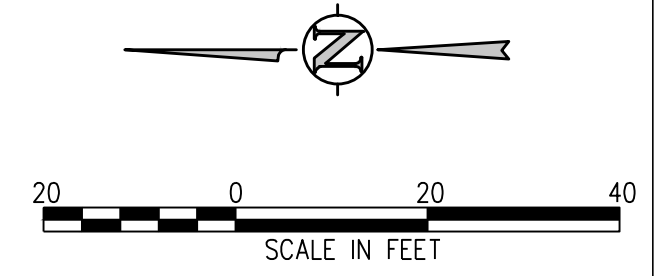
(NOTE - Underground Fire Line (UFL) submittal documents must meet the requirements of NFPA 24 when submitting for review.)



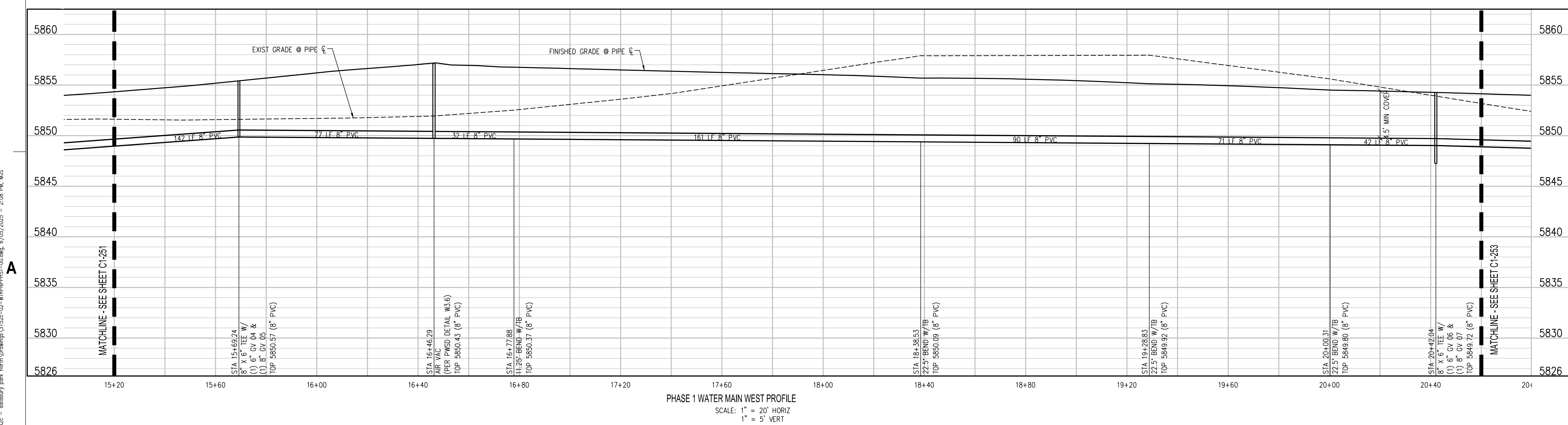
THE SQUARES AND COLORS WITHIN EACH CELL INDICATE THE SHEET'S CORNER PAGE SIZE.
 THE SQUARES AND COLORS WITHIN EACH CELL INDICATE THE SHEET'S CORNER PAGE SIZE.
 THE SQUARES AND COLORS WITHIN EACH CELL INDICATE THE SHEET'S CORNER PAGE SIZE.



- UTILITY NOTES:**
- CONTRACTOR TO FIELD VERIFY ALL EXISTING UNDERGROUND UTILITIES PRIOR TO CONSTRUCTION. REFER TO GENERAL NOTES FOR UTILITY LOCATION AND PROTECTION.
 - CONTRACTOR TO POTHOLE EXISTING UTILITIES AT PROPOSED UTILITY CROSSINGS IN ROW PRIOR TO CONSTRUCTION.
 - ALL DRY UTILITY AND ELECTRIC DESIGNS ARE PROVIDED BY OTHERS AND SHOWN FOR REFERENCE ONLY. SEE MEP PLANS AND SPECIFICATIONS AND COORDINATE WITH ALL UTILITY OWNERS AS NEEDED.
 - CONTRACTOR TO MARK ALL UTILITY STUBS WITH MARKERS.
 - DESIGN AND CONSTRUCTION MUST COMPLY WITH PWSO UTILITY NOTES.



APPROVED
 Aug 18 2025
 PARKER WATER AND
 SANITATION DISTRICT



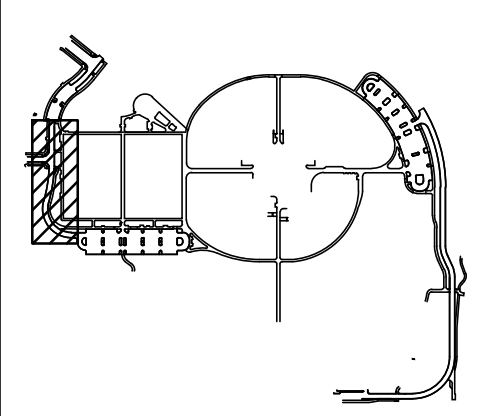
hord | coplan | macht
 LANDSCAPE ARCHITECT / ARCHITECT
 1800 Wazee Street, Suite 450
 Denver, CO 80202
 p. 303.607.0977
 CIVIL ENGINEER / STRUCTURAL ENGINEER
 JVA Incorporated
 1075 Lowell Street, #500
 Denver, CO 80202
 p. 303.444.1951
 ELECTRICAL ENGINEER
 Ackerman Engineering, Inc.
 3000 Franklin Street, #204
 Wheat Ridge, CO 80215
 p. 303.278.7297
 IRRIGATION
 Avocet Irrigation
 11725 W. Ken-Coy Ave., Suite F-509
 Littleton, CO 80127
 p. 303.966.2175
 MECHANICAL ENGINEER
 ENVISION Mechanical Engineers, Inc.
 3777 Regent Court, #500
 Englewood, CO 80112
 p. 303.688.0223

Town of Parker
**SALISBURY REGIONAL
 PARK - PHASE 1**
 11700 MOTSENBOCKER RD
 PARKER, CO 80134

ARCHITECTURE
 LANDSCAPE ARCHITECTURE
 PLANNING
 INTERIOR DESIGN

DATE	DESCRIPTION

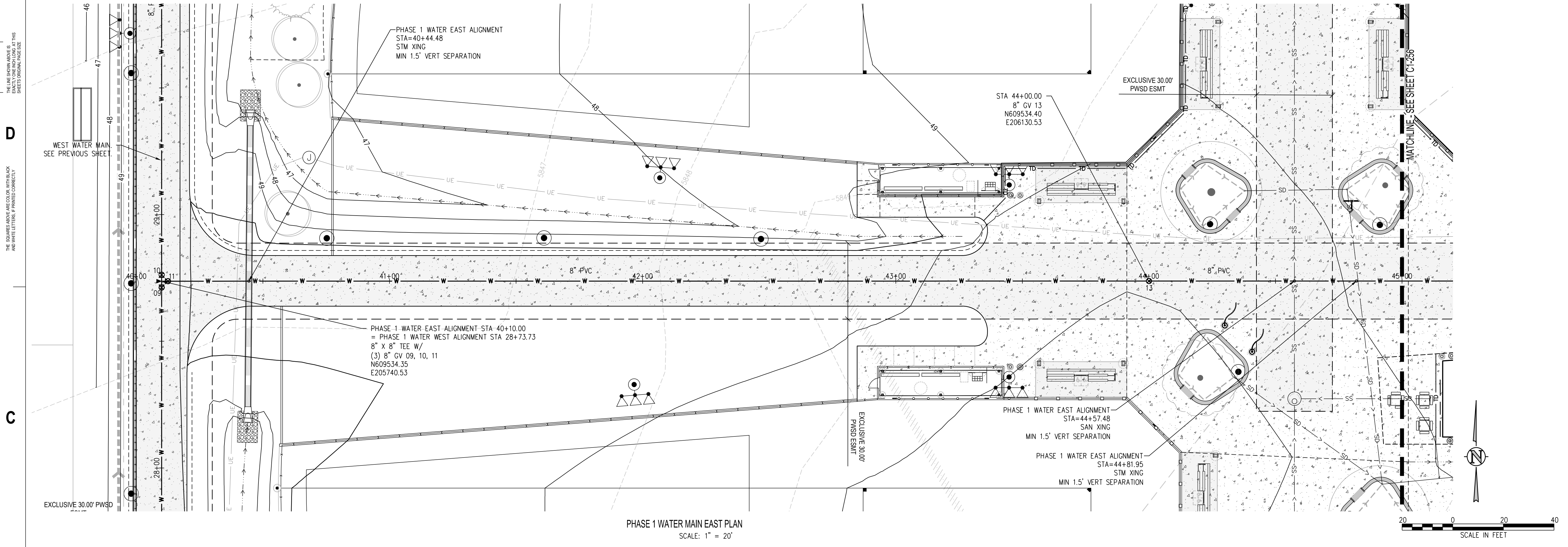
Project Number: 223072.00
 Sheet Issue Date: 2025-07-15
 Drawn By: AMF/KAM/MJS
 Checked By: WTP/CWK/CFG
 Key Map



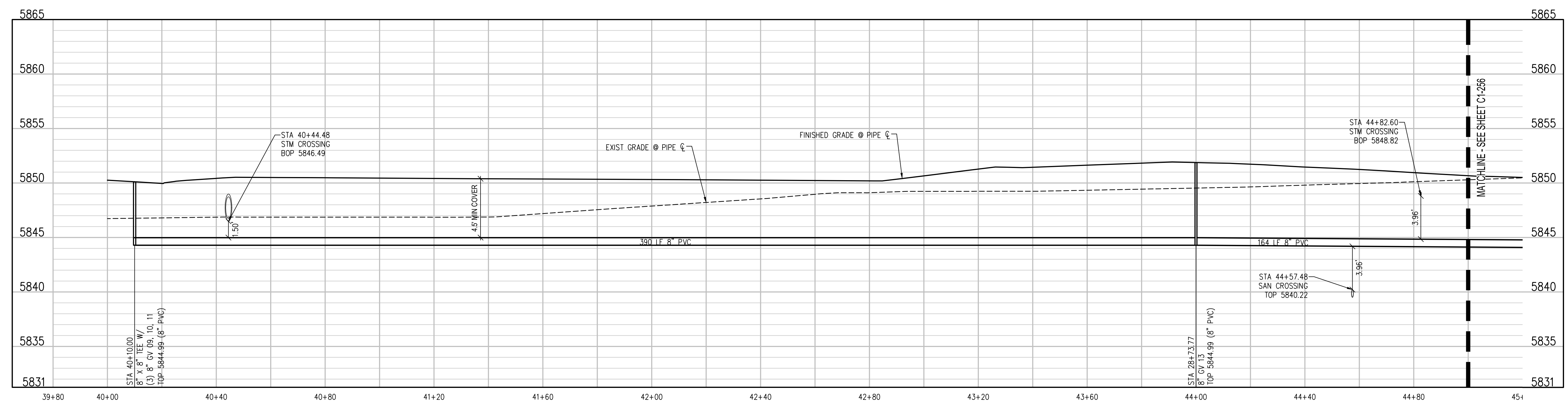
Drawing
**PHASE 1 WATER MAIN
 PLAN & PROFILE**

C1-252

SITE PLAN SUBMITTAL



PHASE 1 WATER MAIN EAST PLAN
SCALE: 1" = 20'



PHASE 1 WATER MAIN EAST PROFILE
SCALE: 1" = 20' HORIZ
1" = 5' VERT

- UTILITY NOTES:**
1. CONTRACTOR TO FIELD VERIFY ALL EXISTING UNDERGROUND UTILITIES PRIOR TO CONSTRUCTION. REFER TO GENERAL NOTES FOR UTILITY LOCATION AND PROTECTION.
 2. CONTRACTOR TO POTHOLE EXISTING UTILITIES AT PROPOSED UTILITY CROSSINGS IN ROW PRIOR TO CONSTRUCTION.
 3. ALL DRY UTILITY AND ELECTRIC DESIGNS ARE PROVIDED BY OTHERS AND SHOWN FOR REFERENCE ONLY. SEE MEP PLANS AND SPECIFICATIONS AND COORDINATE WITH ALL UTILITY OWNERS AS NEEDED.
 4. CONTRACTOR TO MARK ALL UTILITY STUBS WITH MARKERS.
 5. DESIGN AND CONSTRUCTION MUST COMPLY WITH PWSD UTILITY NOTES.

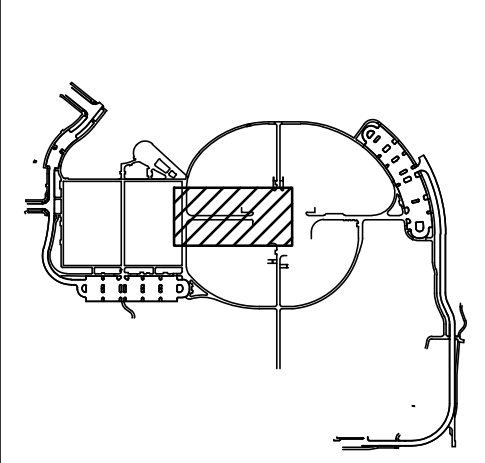
hord | coplan | macht
 LANDSCAPE ARCHITECT / ARCHITECT
 1800 Wazee Street, Suite 450
 Denver, CO 80202
 p. 303.607.0977
 CIVIL ENGINEER / STRUCTURAL ENGINEER
 JVA Incorporated
 1075 Larimer Street, #550
 Denver, CO 80202
 p. 303.444.1961
 ELECTRICAL ENGINEER
 Ackerman Engineering, Inc.
 3000 Youngfield Street, #204
 Wheat Ridge, CO 80215
 p. 303.278.7297
 IRRIGATION
 Avocet Irrigation
 11725 W. 46th Ave., Suite F-509
 Littleton, CO 80127
 p. 303.966.3175
 MECHANICAL ENGINEER
 ENVISION Mechanical Engineers, Inc.
 3077 Federal Court, #600
 Englewood, CO 80112
 p. 303.688.0223

Town of Parker
**SALISBURY REGIONAL
 PARK - PHASE 1**
 11700 MOTSENBOCKER RD
 PARKER, CO 80134

ARCHITECTURE
 LANDSCAPE ARCHITECTURE
 PLANNING
 INTERIOR DESIGN

DATE	DESCRIPTION

Project Number: 223072.00
 Sheet Issue Date: 2025-07-15
 Drawn By: AMF/KAM/MJS
 Checked By: WTP/CWK/CFG



Drawing
 PHASE 1 WATER MAIN
 PLAN & PROFILE

APPROVED
 Aug 18 2025
 PARKER WATER AND
 SANITATION DISTRICT

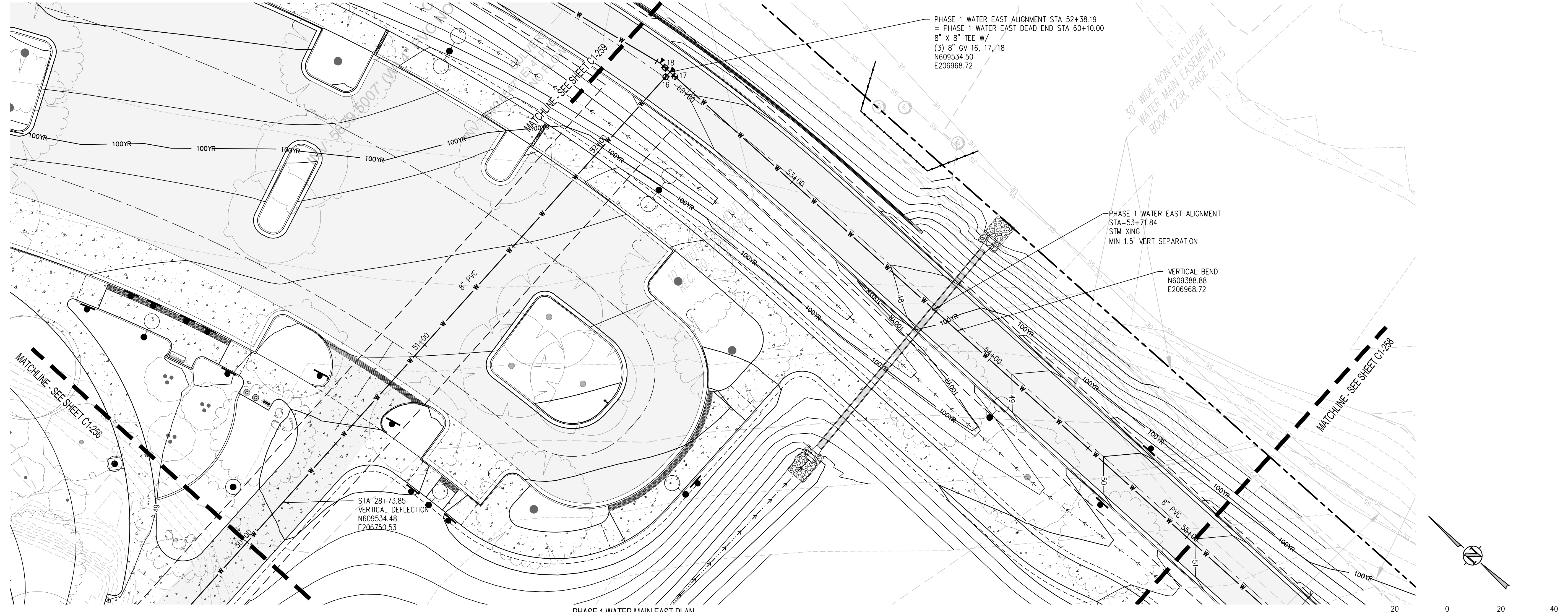
C1-255
 SITE PLAN SUBMITTAL

Q:\3752a - salisbury park north\Drawings\3752a-02-WPSPH1S1-00.dwg, 6/05/2025 - 2:11 PM, MJS

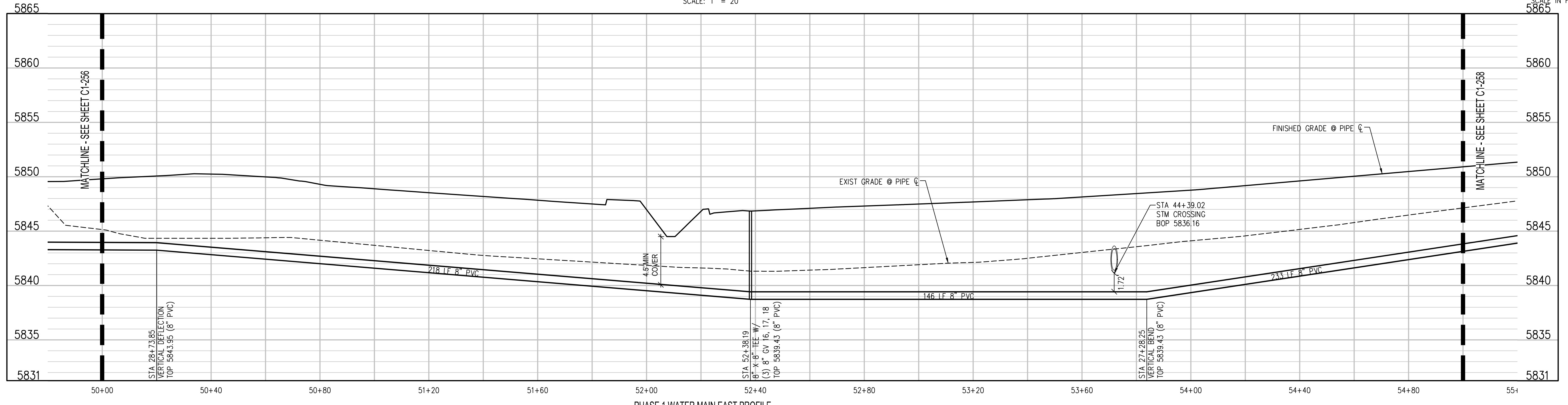
THE SQUARES ABOVE ARE COLOR WITH BLACK AND WHITE LETTERS. PRINTED CORRECTLY.

D

C



B



A

- UTILITY NOTES:**
1. CONTRACTOR TO FIELD VERIFY ALL EXISTING UNDERGROUND UTILITIES PRIOR TO CONSTRUCTION. REFER TO GENERAL NOTES FOR UTILITY LOCATION AND PROTECTION.
 2. CONTRACTOR TO POTHOLE EXISTING UTILITIES AT PROPOSED UTILITY CROSSINGS IN ROW PRIOR TO CONSTRUCTION.
 3. ALL DRY UTILITY AND ELECTRIC DESIGNS ARE PROVIDED BY OTHERS AND SHOWN FOR REFERENCE ONLY. SEE MEP PLANS AND SPECIFICATIONS AND COORDINATE WITH ALL UTILITY OWNERS AS NEEDED.
 4. CONTRACTOR TO MARK ALL UTILITY STUBS WITH MARKERS.
 5. DESIGN AND CONSTRUCTION MUST COMPLY WITH PWSD UTILITY NOTES.

APPROVED
Aug 18 2025
PARKER WATER AND
SANITATION DISTRICT

hord | coplan | macht
LANDSCAPE ARCHITECT / ARCHITECT
1800 Wazee Street, Suite 450
Denver, CO 80202
p. 303.607.0977

CIVIL ENGINEER / STRUCTURAL ENGINEER
JVA Incorporated
1075 Lowell Street, #550
Denver, CO 80202
p. 303.444.1961

ELECTRICAL ENGINEER
Ackerman Engineering, Inc.
3200 Youngster Street, #204
Wheat Ridge, CO 80215
p. 303.278.7297

IRRIGATION
Avocat Irrigation
11725 W. 96th Circle, Suite F-509
LIMONA, CO 80137
p. 303.986.2175

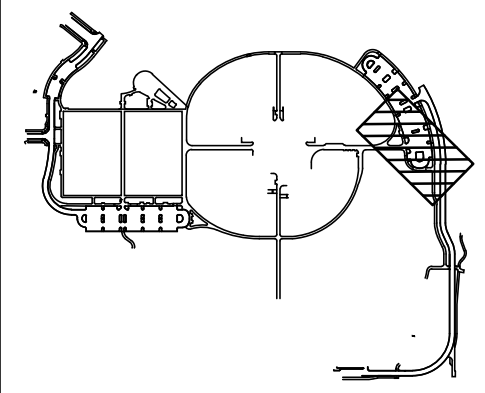
MECHANICAL ENGINEER
ENVISION Mechanical Engineers, Inc.
3972 Fremont Court, #600
Englewood, CO 80112
p. 303.688.0223

Town of Parker
**SALISBURY REGIONAL
PARK - PHASE 1**
11700 MOTSENBOCKER RD
PARKER, CO 80134

ARCHITECTURE
LANDSCAPE ARCHITECTURE
PLANNING
INTERIOR DESIGN

DATE	DESCRIPTION

Project Number: 223072.00
Sheet Issue Date: 2025-07-15
Drawn By: AMF/KAM/MJS
Checked By: WTP/CWK/CFG
Key Map



Drawing
PHASE 1 WATER MAIN
PLAN & PROFILE

C1-257
SITE PLAN SUBMITTAL

Q:\3752a - salisbury park north\Drawings\3752a-02-WP01PH1-00.dwg, 6/05/2025 - 2:12 PM, M.S

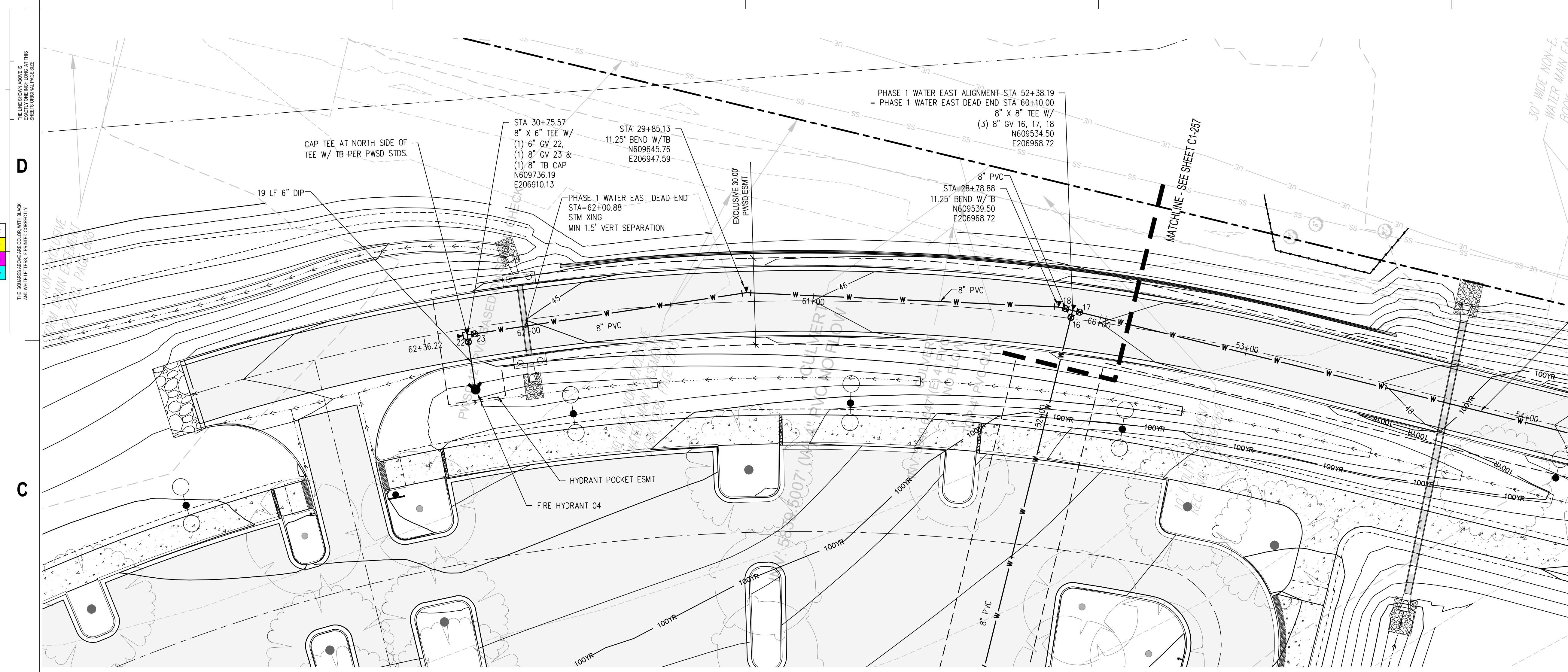
1

2

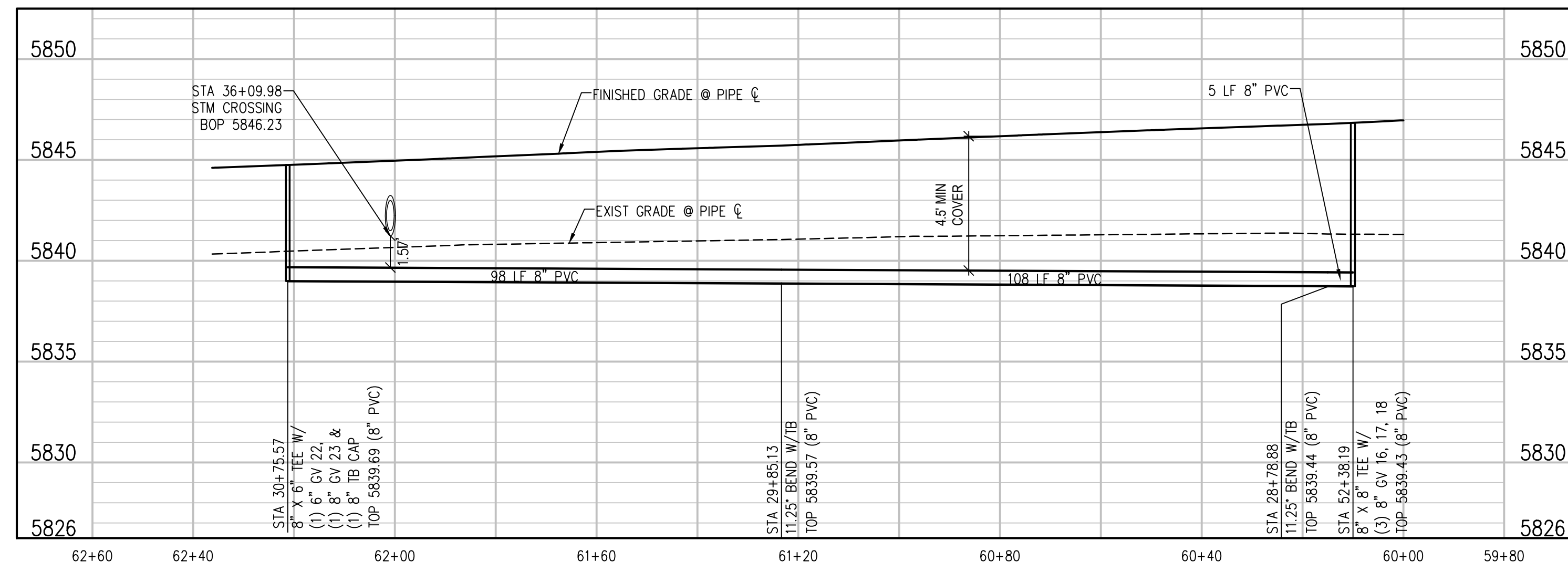
3

4

5

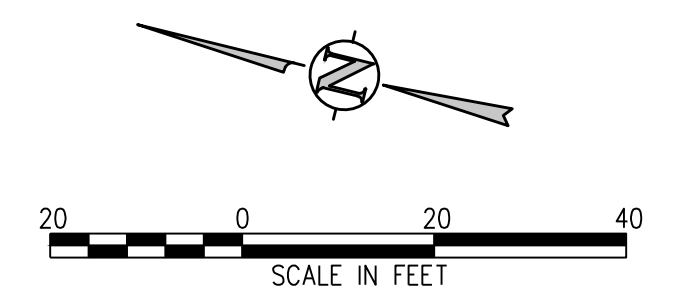


PHASE 1 WATER EAST DEAD END PLAN
SCALE: 1" = 20'



PHASE 1 WATER EAST DEAD END PROFILE
SCALE: 1"=20' HORIZ
1"=5' VERT

- UTILITY NOTES:**
1. CONTRACTOR TO FIELD VERIFY ALL EXISTING UNDERGROUND UTILITIES PRIOR TO CONSTRUCTION. REFER TO GENERAL NOTES FOR UTILITY LOCATION AND PROTECTION.
 2. CONTRACTOR TO POTHOLE EXISTING UTILITIES AT PROPOSED UTILITY CROSSINGS IN ROW PRIOR TO CONSTRUCTION.
 3. ALL DRY UTILITY AND ELECTRIC DESIGNS ARE PROVIDED BY OTHERS AND SHOWN FOR REFERENCE ONLY. SEE MEP PLANS AND SPECIFICATIONS AND COORDINATE WITH ALL UTILITY OWNERS AS NEEDED.
 4. CONTRACTOR TO MARK ALL UTILITY STUBS WITH MARKERS.
 5. DESIGN AND CONSTRUCTION MUST COMPLY WITH PWSD UTILITY NOTES.



hord | coplan | mach
 LANDSCAPE ARCHITECT / ARCHITECT
 1800 Wazee Street, Suite 450
 Denver, CO 80202
 p. 303.607.0977

CIVIL ENGINEER / STRUCTURAL ENGINEER
 JVA Incorporated
 1675 Larimer Street, #500
 Denver, CO 80202
 p. 303.444.1961

ELECTRICAL ENGINEER
 Ackerman Engineering, Inc.
 3000 Youngfield Street, #204
 Wheat Ridge, CO 80215
 p. 303.278.7297

IRRIGATION
 Avocet Irrigation
 11725 W. 46th Circle, Suite F-509
 Littleton, CO 80127
 p. 303.986.2175

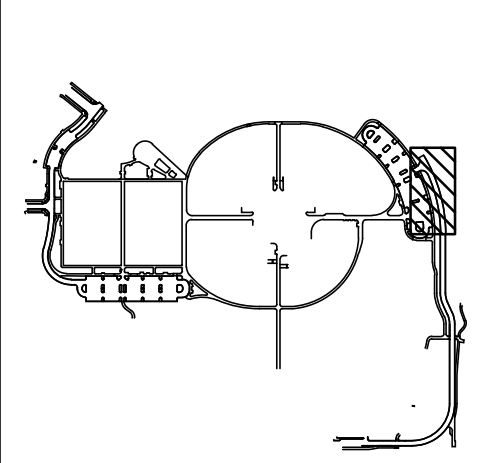
MECHANICAL ENGINEER
 ENVISION Mechanical Engineers, Inc.
 3777 Federal Court, #600
 Englewood, CO 80112
 p. 303.688.0223

Town of Parker
**SALISBURY REGIONAL
 PARK - PHASE 1**
 11700 MOTSENBOCKER RD
 PARKER, CO 80134

ARCHITECTURE
 LANDSCAPE ARCHITECTURE
 PLANNING
 INTERIOR DESIGN

DATE	DESCRIPTION

Project Number: 223072.00
 Sheet Issue Date: 2025-07-15
 Drawn By: AMF/KAM/MJS
 Checked By: WTP/CWK/CFG



Drawing
 PHASE 1 WATER MAIN
 PLAN & PROFILE

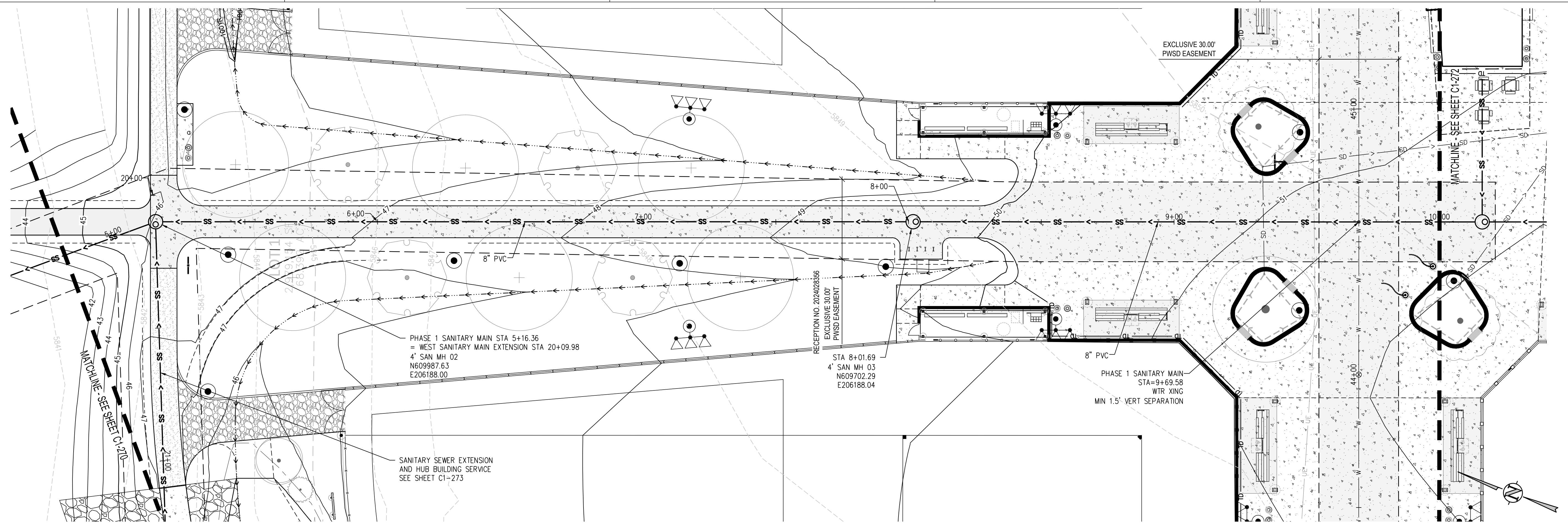
APPROVED
 Aug 18 2025
 PARKER WATER AND
 SANITATION DISTRICT

C1-259
 SITE PLAN SUBMITTAL

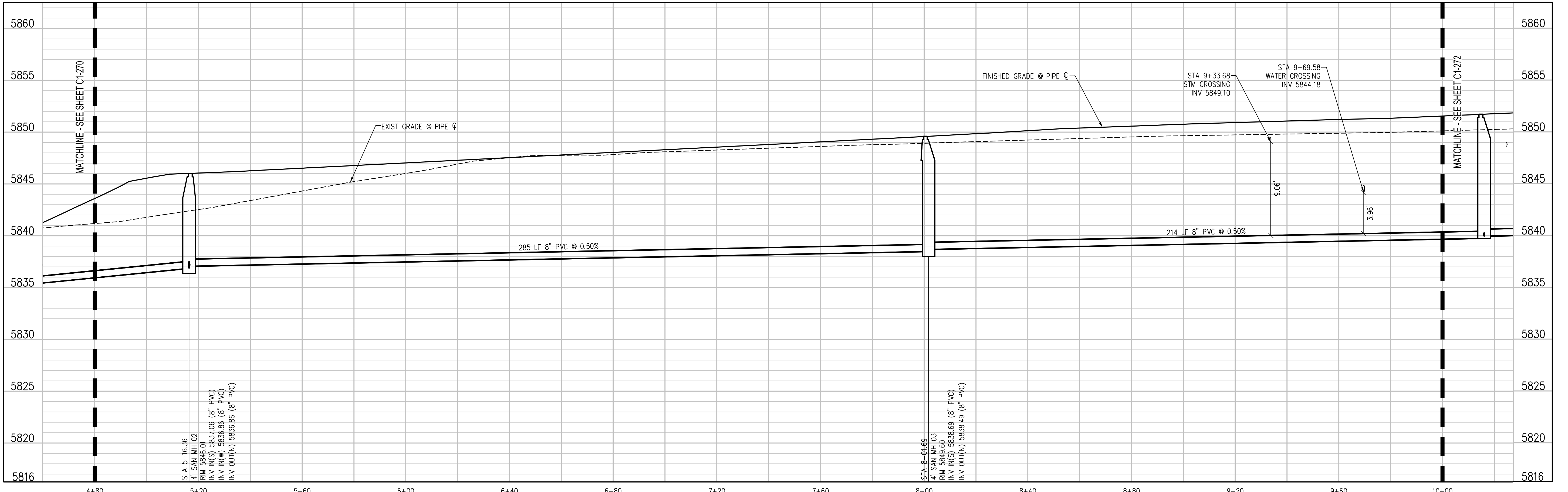
THE SQUARES AND COLORS WITHIN EACH SQUARE REPRESENT THE PROPOSED UTILITIES. THE LINE SHOWING ABOVE IS THE PROPOSED UTILITY LINE. THE LINE SHOWING BELOW IS THE EXISTING UTILITY LINE. THE SQUARES ARE 1' BY 1' IN SIZE. SHEETS CONTAINING PAGE SIZE.

D
C
B
A

0:\3752 - salisbury park north\Drawings\3752-02-SANPHPHS1-00.dwg, 6/05/2025 - 2:17 PM, M.S



PHASE 1 SANITARY MAIN PLAN
SCALE: 1" = 20'



PHASE 1 SANITARY MAIN PROFILE
SCALE: 1" = 20' HORIZ
1" = 5' VERT

APPROVED
Aug 18 2025
**PARKER WATER AND
SANITATION DISTRICT**

- UTILITY NOTES:**
1. CONTRACTOR TO FIELD VERIFY ALL EXISTING UNDERGROUND UTILITIES PRIOR TO CONSTRUCTION. REFER TO GENERAL NOTES FOR UTILITY LOCATION AND PROTECTION.
 2. CONTRACTOR TO POTHOLE EXISTING UTILITIES AT PROPOSED UTILITY CROSSINGS IN ROW PRIOR TO CONSTRUCTION.
 3. ALL DRY UTILITY AND ELECTRIC DESIGNS ARE PROVIDED BY OTHERS AND SHOWN FOR REFERENCE ONLY. SEE MEP PLANS AND SPECIFICATIONS AND COORDINATE WITH ALL UTILITY OWNERS AS NEEDED.
 4. CONTRACTOR TO MARK ALL UTILITY STUBS WITH MARKERS.
 5. DESIGN AND CONSTRUCTION MUST COMPLY WITH PWSD UTILITY NOTES.

hord | coplan | mach
LANDSCAPE ARCHITECT / ARCHITECT
1800 Wazee Street, Suite 450
Denver, CO 80202
p. 303.607.0977

CIVIL ENGINEER / STRUCTURAL ENGINEER
JVA Incorporated
1075 Larimer Street, #550
Denver, CO 80202
p. 303.444.1961

ELECTRICAL ENGINEER
Ackerman Engineering, Inc.
3300 Youngfield Street, #204
Wheat Ridge, CO 80215
p. 303.778.7297

IRRIGATION
Avocat Irrigation
11725 W. Kent-Coyne Ave., Suite F-509
Littleton, CO 80120
p. 303.986.5175

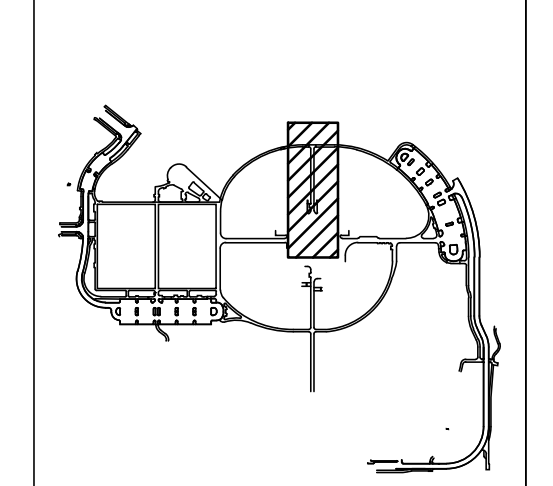
MECHANICAL ENGINEER
ENVISION Mechanical Engineers, Inc.
3972 Federal Court, #500
Englewood, CO 80112
p. 303.688.0223

Town of Parker
**SALISBURY REGIONAL
PARK - PHASE 1**
11700 MOTSENBOCKER RD
PARKER, CO 80134

ARCHITECTURE
LANDSCAPE ARCHITECTURE
PLANNING
INTERIOR DESIGN

DATE	DESCRIPTION

Project Number: 223072.00
Sheet Issue Date: 2025-07-15
Drawn By: AMF/KAM/MJS
Checked By: WTP/CWK/CFG



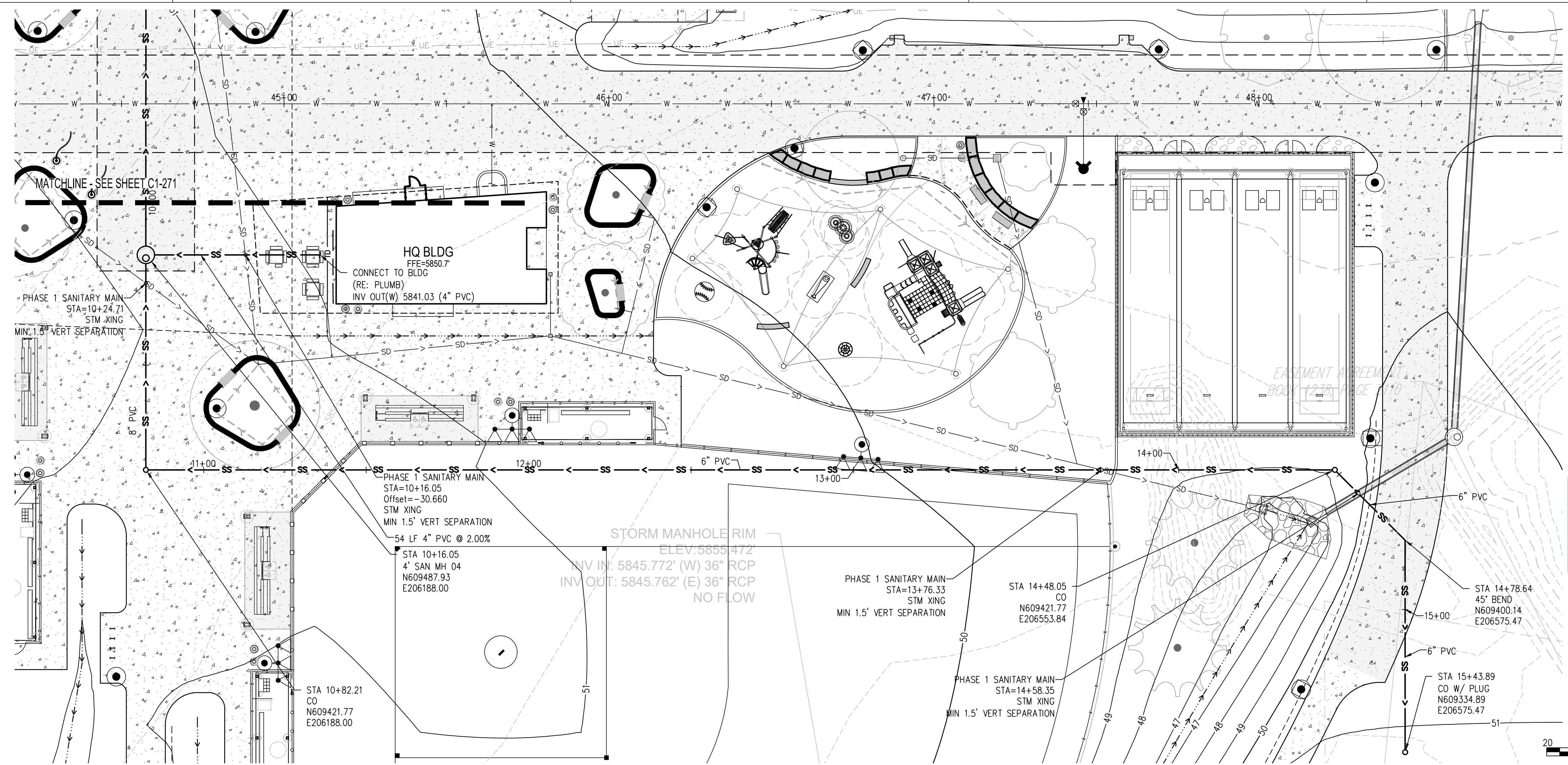
Drawing
**PHASE 1 SANITARY
SEWER PLAN & PROFILE**
C1-271
SITE PLAN SUBMITTAL

THE SQUARES AND ARE COLOR WITH BLACK AND WHITE TO INDICATE PRINTING CORRECTLY

D

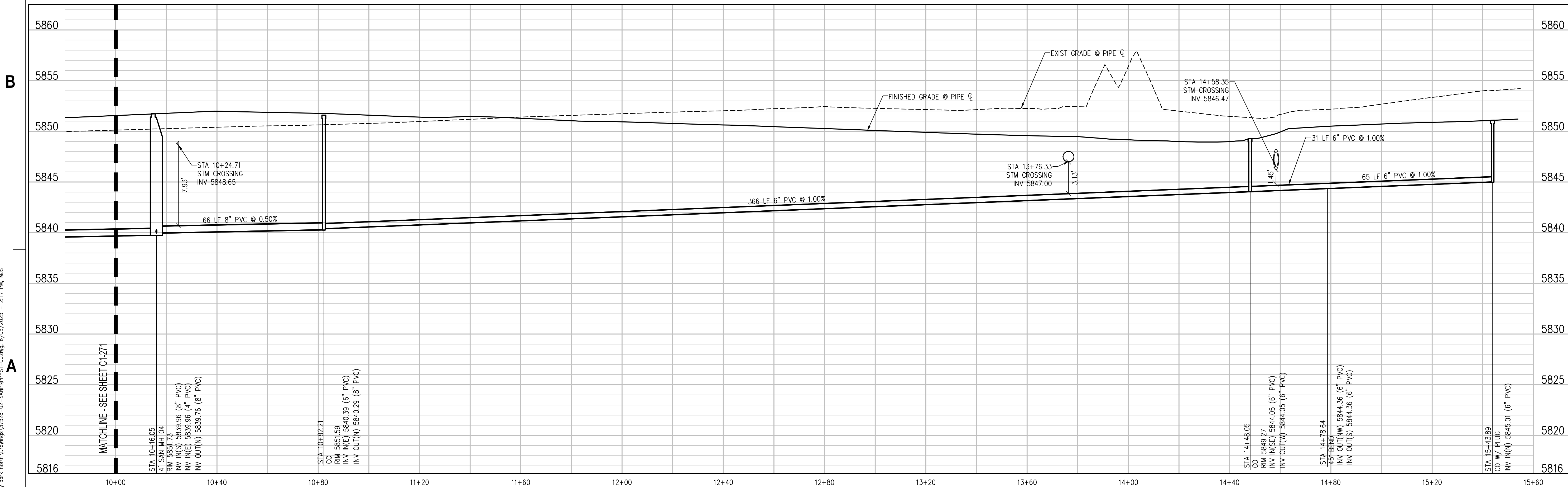
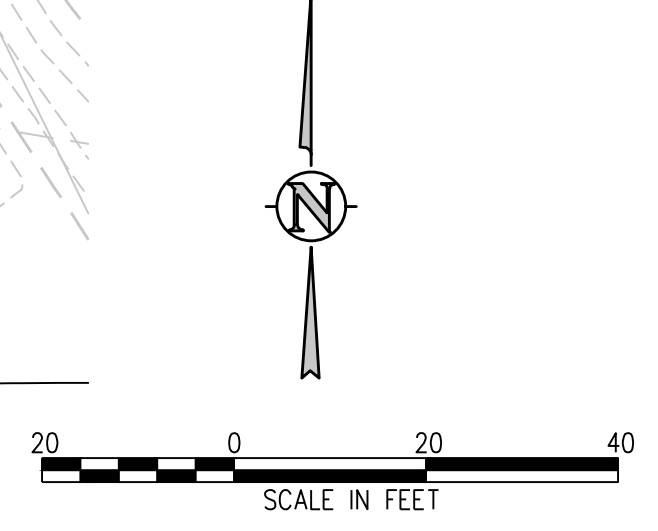
C

- UTILITY NOTES:**
1. CONTRACTOR TO FIELD VERIFY ALL EXISTING UNDERGROUND UTILITIES PRIOR TO CONSTRUCTION. REFER TO GENERAL NOTES FOR UTILITY LOCATION AND PROTECTION.
 2. CONTRACTOR TO POTHOLE EXISTING UTILITIES AT PROPOSED UTILITY CROSSINGS IN ROW PRIOR TO CONSTRUCTION.
 3. ALL DRY UTILITY AND ELECTRIC DESIGNS ARE PROVIDED BY OTHERS AND SHOWN FOR REFERENCE ONLY. SEE MEP PLANS AND SPECIFICATIONS AND COORDINATE WITH ALL UTILITY OWNERS AS NEEDED.
 4. CONTRACTOR TO MARK ALL UTILITY STUBS WITH MARKERS.
 5. DESIGN AND CONSTRUCTION MUST COMPLY WITH PWS&D UTILITY NOTES.



PHASE 1 SANITARY MAIN PLAN
SCALE: 1" = 20'

APPROVED
 Aug 18 2025
 PARKER WATER AND
 SANITATION DISTRICT



PHASE 1 SANITARY MAIN PROFILE
SCALE: 1" = 20' HORIZ
1" = 5' VERT

hord | coplan | macht
 LANDSCAPE ARCHITECT / ARCHITECT
 1800 Wazee Street, Suite 450
 Denver, CO 80202
 p. 303.607.0977

CIVIL ENGINEER / STRUCTURAL ENGINEER
 JVA Incorporated
 1075 Larimer Street, #500
 Denver, CO 80202
 p. 303.444.1961

ELECTRICAL ENGINEER
 Ackerman Engineering, Inc.
 3200 Youngfield Street, #204
 Wheat Ridge, CO 80215
 p. 303.278.7297

IRRIGATION
 Avocet Irrigation
 11725 W. 46th Ave., Suite F-509
 Littleton, CO 80127
 p. 303.986.3175

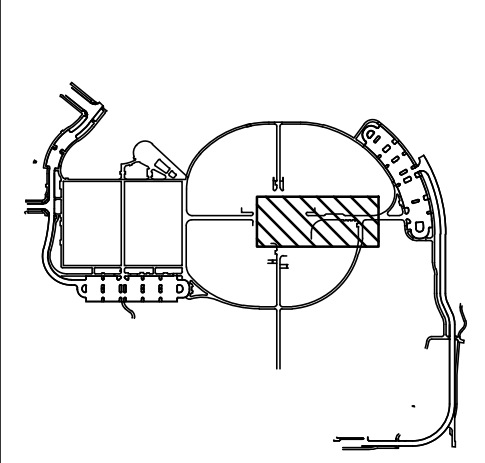
MECHANICAL ENGINEER
 ENVISION Mechanical Engineers, Inc.
 3077 Federal Court, #500
 Englewood, CO 80112
 p. 303.688.0223

Town of Parker
**SALISBURY REGIONAL
 PARK - PHASE 1**
 11700 MOTSENBOCKER RD
 PARKER, CO 80134

ARCHITECTURE
 LANDSCAPE ARCHITECTURE
 PLANNING
 INTERIOR DESIGN

DATE	DESCRIPTION

Project Number: 223072.00
 Sheet Issue Date: 2025-07-15
 Drawn By: AMF/KAM/MJS
 Checked By: WTP/CWK/CFG



Drawing
**PHASE 1 SANITARY
 SEWER PLAN & PROFILE**

C1-272

SITE PLAN SUBMITTAL

Q:\3752a - salisbury park north\Drawings\3752a-02-SANSEWERPH1-00.dwg, 6/05/2025 - 2:17 PM, M.S

