

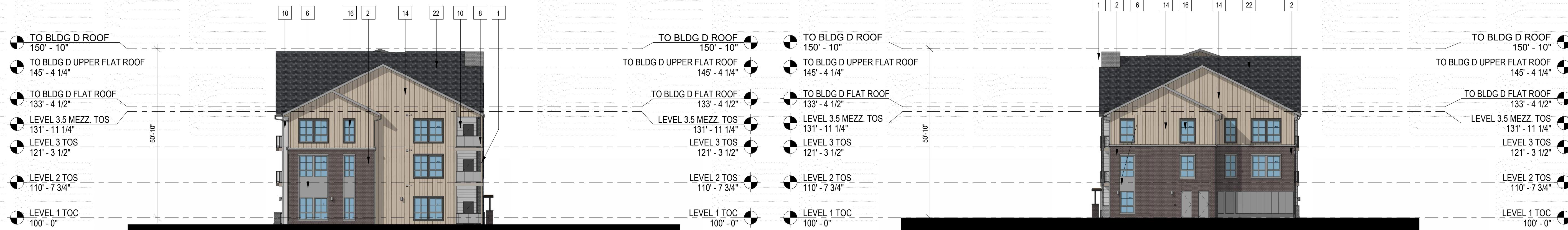
COMPARK VILLAGE SOUTH
F1 AMD 2 - MULTIFAMILY
SITE PLAN

LOT 2, COMPARK VILLAGE FILING NO. 1, AMEND NO. 2
SOUTH HALF SECTION 6, TOWNSHIP 6 SOUTH, RANGE 66 WEST OF THE 6TH PRINCIPAL MERIDIAN
TOWN OF PARKER, COUNTY OF DOUGLAS, STATE OF COLORADO

PROJECT NUMBER
210512
DRAWN BY
DATE
10/02/20223



Architecture + Planning
820 16th Street, Suite 500
Denver, CO 80202
ktgy.com
303.825.6400



3 BUILDING D - MIRRORED SIDE ELEVATION
1/16" = 1'-0"

4 BUILDING D - MIRRORED SIDE ELEVATION
1/16" = 1'-0"

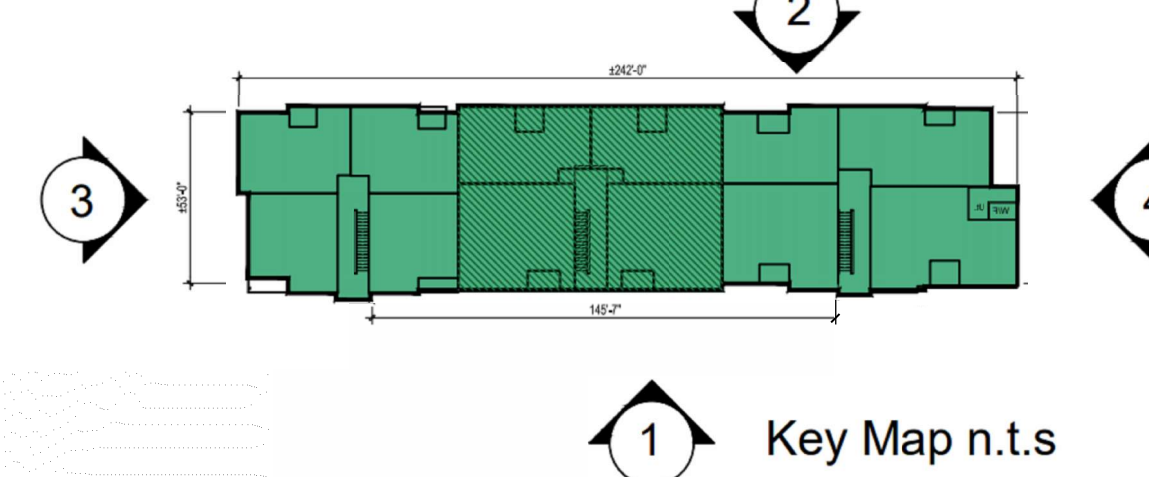


2 BUILDING D - MIRRORED REAR ELEVATION
1/16" = 1'-0"



1 BUILDING D - MIRRORED FRONT ELEVATION
1/16" = 1'-0"

Building D - 36plex w/ Mezzanines
(3-Story Plus)



KEYNOTES - SIP

- | # | KEYNOTES - SIP |
|-----|--|
| 1 | BRICK - RUNNING - COLOR 1 |
| 2 | BRICK - RUNNING - COLOR 2 |
| 3 | FIBER CEMENT PANELING - COLOR 1 |
| 4 | FIBER CEMENT PANELING - COLOR 2 |
| 5 | FIBER CEMENT PANELING - COLOR 3 |
| 6 | FIBER CEMENT PANELING - COLOR 4 |
| 7 | METAL PANEL - COLOR 1 |
| 8 | METAL PANEL - COLOR 2 |
| 9 | BOARD AND BATTEN - COLOR 1 (BLUE) |
| 10 | BOARD AND BATTEN - COLOR 2 |
| 11 | VERTICAL SIDING - COLOR 1 |
| 12 | VERTICAL SIDING - COLOR 2 |
| 13 | VERTICAL SIDING - COLOR 3 |
| 14 | VERTICAL SIDING - COLOR 4 |
| 15 | VERTICAL SIDING - COLOR 5 |
| 16 | VINYL WINDOW |
| 18 | METAL RAILING |
| 19 | MECHANICAL SCREEN - 8% OPEN HORIZONTAL TREX PLANKS |
| 19a | STOREFRONT |
| 20 | STOREFRONT |
| 21 | COLUMN |
| 22 | ASPHALT SHINGLE ROOFING |
| 23 | BOARD & BATTEN - COLOR 3 - DARK GREY |
| 24 | STONE - COLOR 1 |
| 25 | EXTERIOR LIGHT FIXTURE |
| 26 | HORIZONTAL SIDING - COLOR 1 |
| 27 | HORIZONTAL SIDING - COLOR 2 |
| 28 | HORIZONTAL SIDING - COLOR 3 |
| 29 | HORIZONTAL SIDING - COLOR 4 |
| 30 | HORIZONTAL SIDING - COLOR 5 |
| 32 | DOWNSPOUT |

- NOTES:
1. SEE MATERIAL BOARDS FOR MORE INFORMATION.
2. SEE SITE PLAN FOR DIMENSIONS BETWEEN ENTRIES.
3. GROUND FLOOR TRANSPARENCY TO BE MIN. OF 25% MEASURED AS A PERCENTAGE OF GLAZING AT THE BASE OF THE BUILDING.
4. UPPER FLOOR TRANSPARENCY TO BE MIN. OF 15% GLAZING MEASURED AS A PERCENTAGE OF GLAZING ON THE MIDDLE OF THE BUILDING.
5. TRIM AROUND WINDOWS SHALL BE A MINIMUM OF THREE AND ONE-HALF (3 1/2) INCHES WIDE, AND TRIM AROUND DOORS SHOULD BE A MINIMUM OF TWO (2) INCHES WIDE.

PREPARED FOR CENTURY COMMUNITIES



PROJECT
COMPARK VILLAGE SOUTH

TOWN OF PARKER, COUNTY OF DOUGLAS, COLORADO 80134

SHEET TITLE
MIRRORED ELEVATIONS

SHEET NUMBER
59A

**COMPARK VILLAGE SOUTH
F1 AMD 2 - MULTIFAMILY
SITE PLAN**
LOT 1, COMPARK VILLAGE FILING NO. 1, AMEND NO. 2
SOUTH HALF SECTION 6, TOWNSHIP 6 SOUTH, RANGE 66 WEST OF THE 6TH PRINCIPAL MERIDIAN
TOWN OF PARKER, COUNTY OF DOUGLAS, STATE OF COLORADO

PROJECT NUMBER
210512

DRAWN BY

DATE
09/06/2022



KEY MAP - n.t.s
BUILDING D

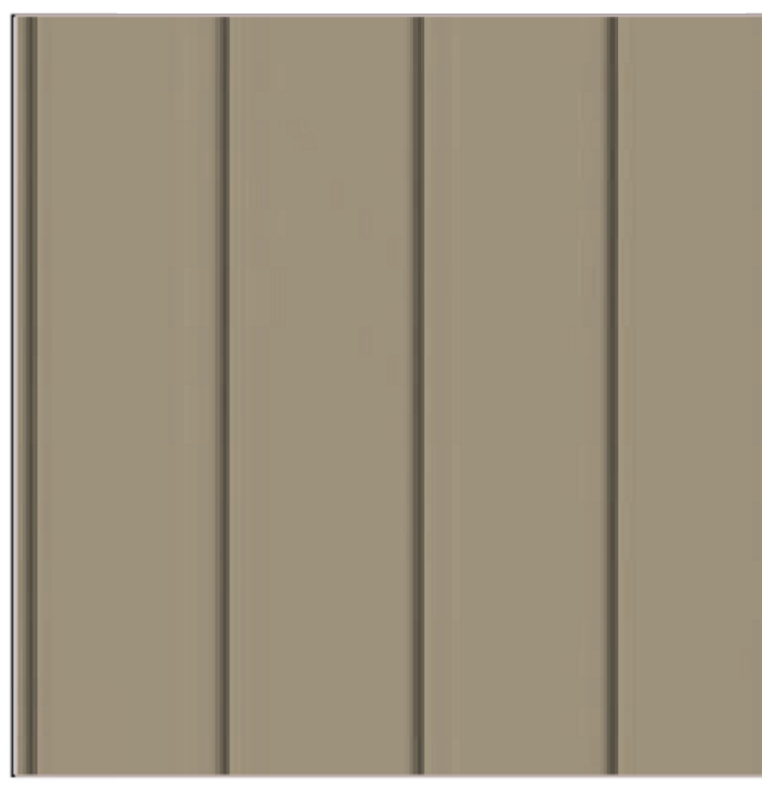


FRONT ELEVATION
Note: Trim around windows shall be minimum of three and one-half (3-1/2) inches wide, and trim around doors shall be a minimum of (2) inches wide.

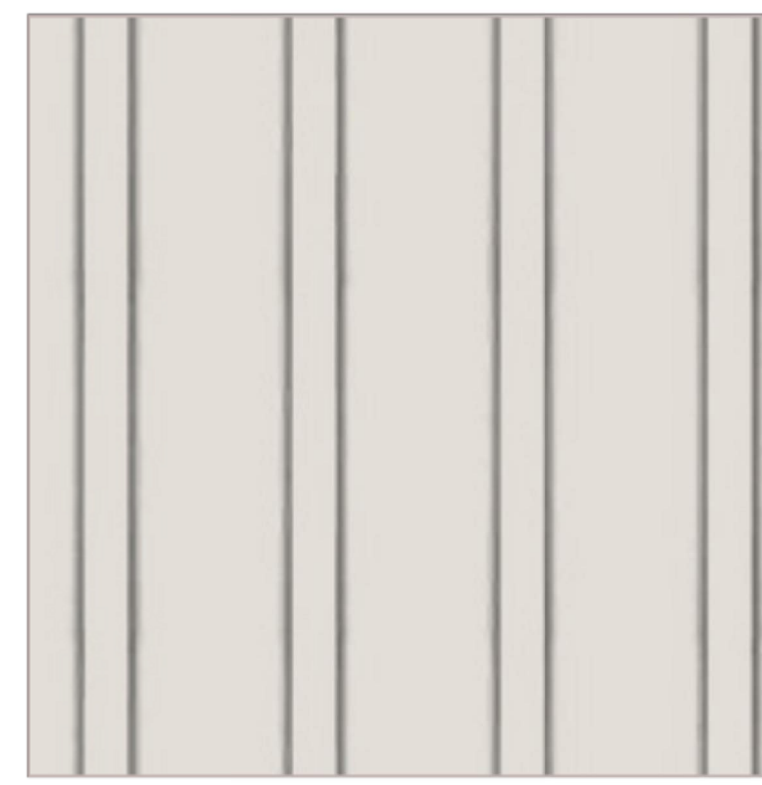
1 BRICK LIGHT BRICK



14 VERTICAL SIDING (WOOD TONE)



19 VERTICAL SIDING (V-GROOVE)



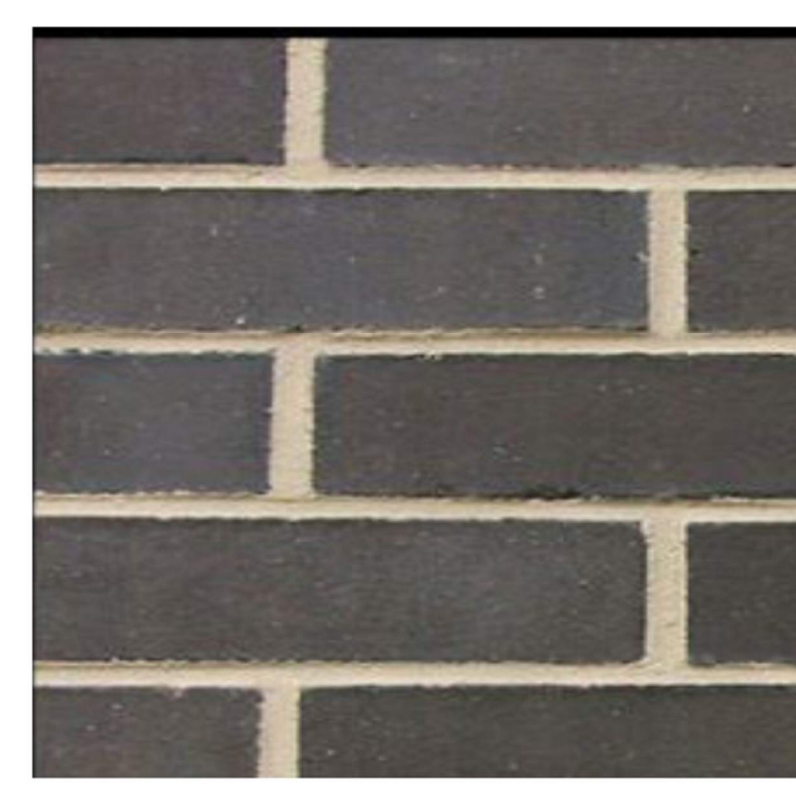
4 CEMENTITIOUS PANEL W/ REVEAL



28 HORIZONTAL SIDING (V-GROOVE)



2 BRICK DARK BRICK



8 METAL PANEL



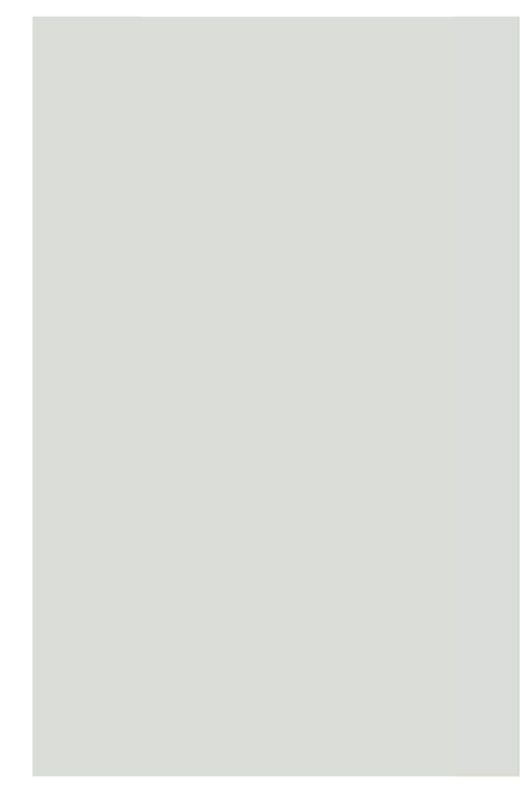
5 CEMENTITIOUS PANEL



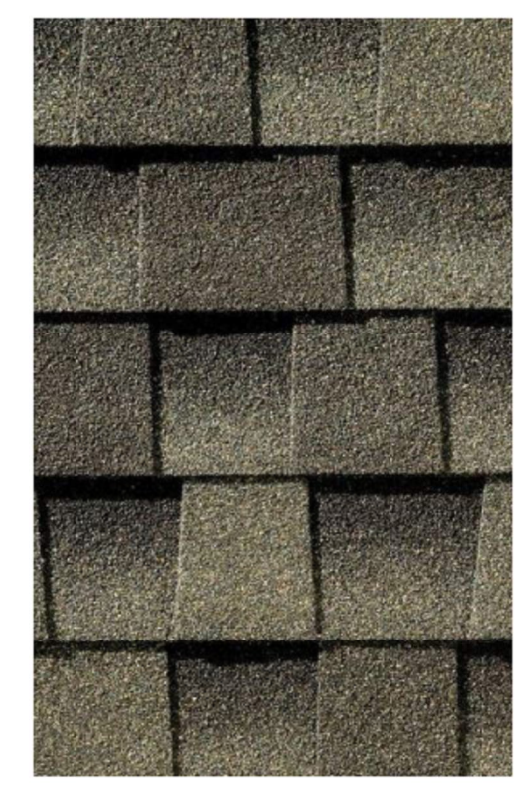
6 CEMENTITIOUS PANEL



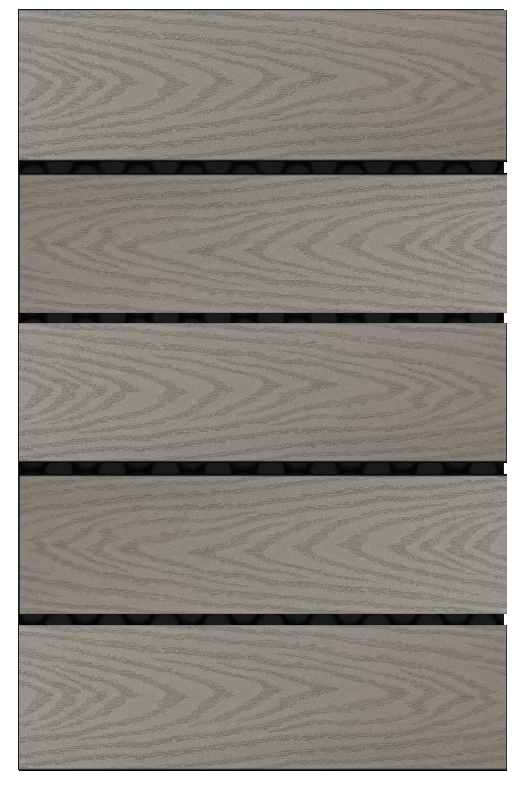
**ADOBE (NON-WHITE)
16 WINDOW FRAME**



22 ROOF



19a ROOF SCREEN



PREPARED FOR CENTURY
COMMUNITIES



PROJECT
**COMPARK
VILLAGE
SOUTH**

TOWN OF PARKER,
COUNTY
OF DOUGLAS, COLORADO
80134

SHEET TITLE
**MIRRORED
BLDG D
MATERIAL
BOARD**

SHEET NUMBER
47A