

COMPARK VILLAGE SOUTH  
F1 AMD 2 - MULTIFAMILY  
SITE PLAN

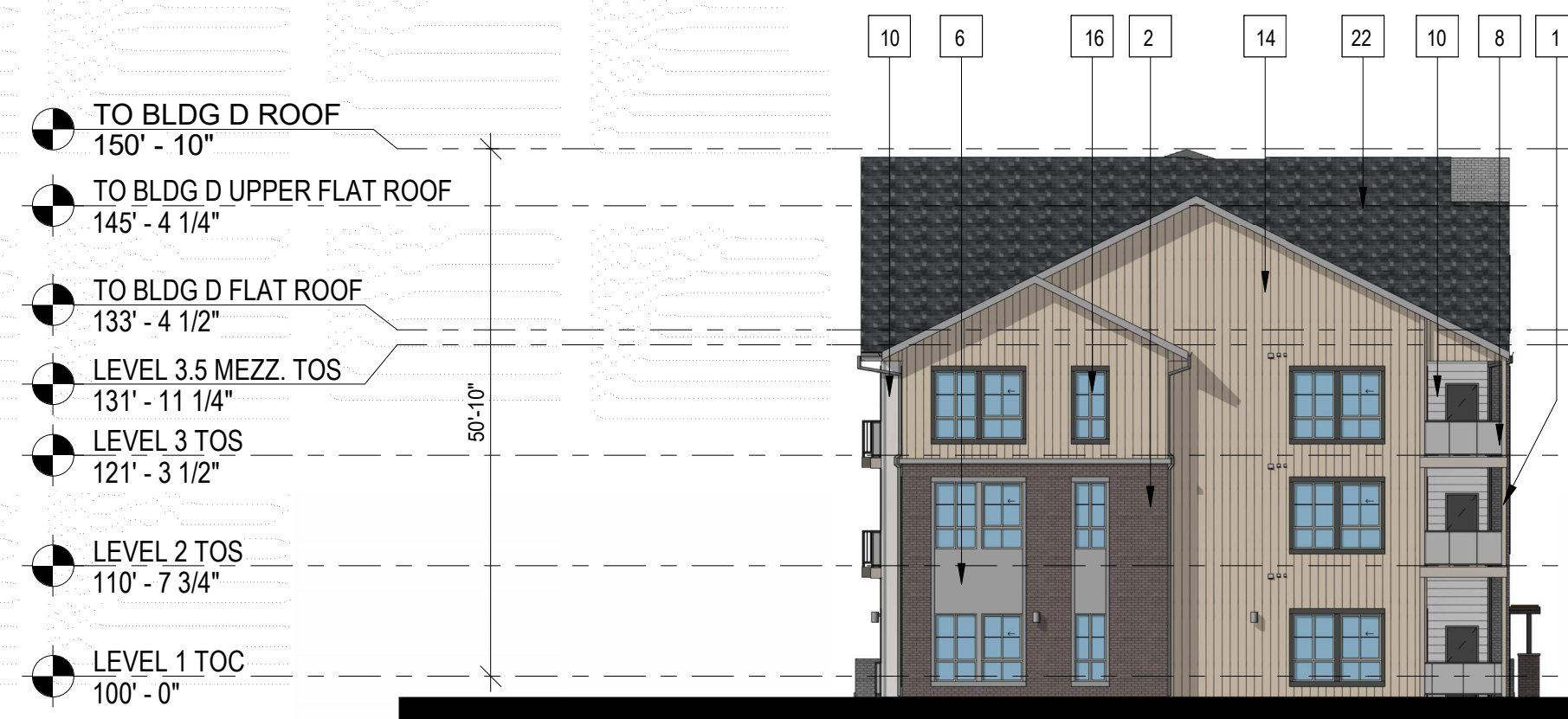
LOT 2, COMPARK VILLAGE FILING NO. 1, AMEND NO. 2  
SOUTH HALF SECTION 6, TOWNSHIP 6 SOUTH, RANGE 66 WEST OF THE 6TH PRINCIPAL MERIDIAN  
TOWN OF PARKER, COUNTY OF DOUGLAS, STATE OF COLORADO



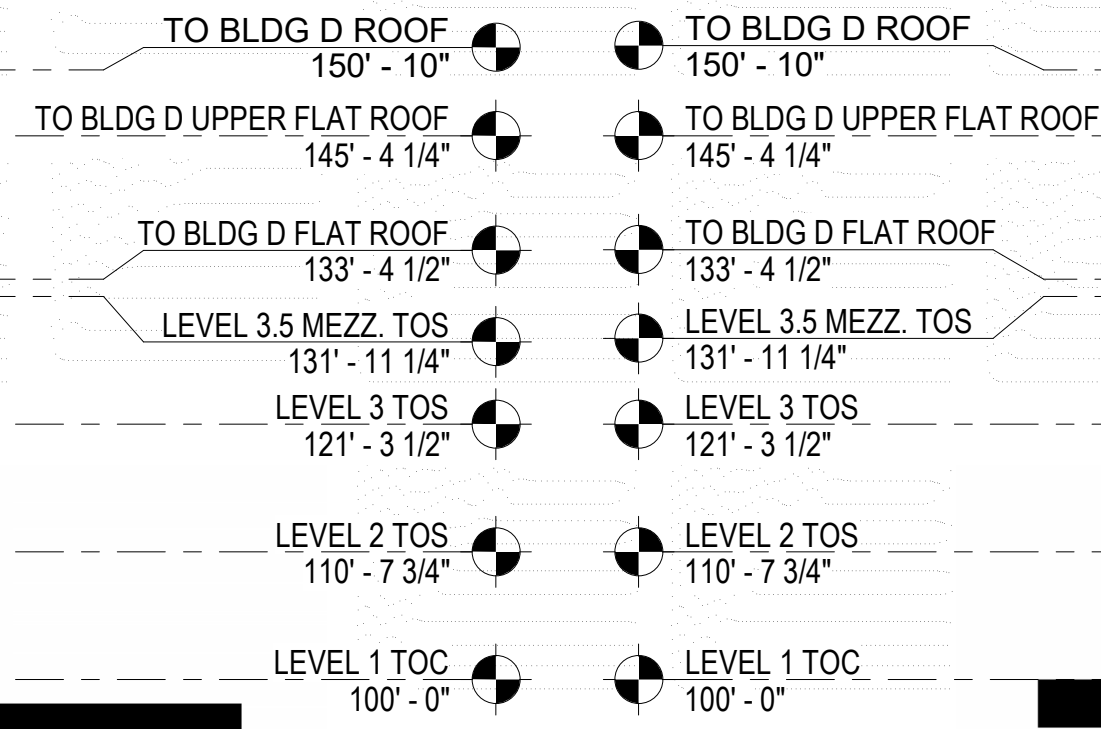
PROJECT NUMBER  
210512  
DRAWN BY  
DATE  
10/02/20223



Architecture + Planning  
820 16th Street, Suite 500  
Denver, CO 80202  
ktgy.com  
303.825.6400



3 BUILDING D - MIRRORED SIDE ELEVATION  
1/16" = 1'-0"



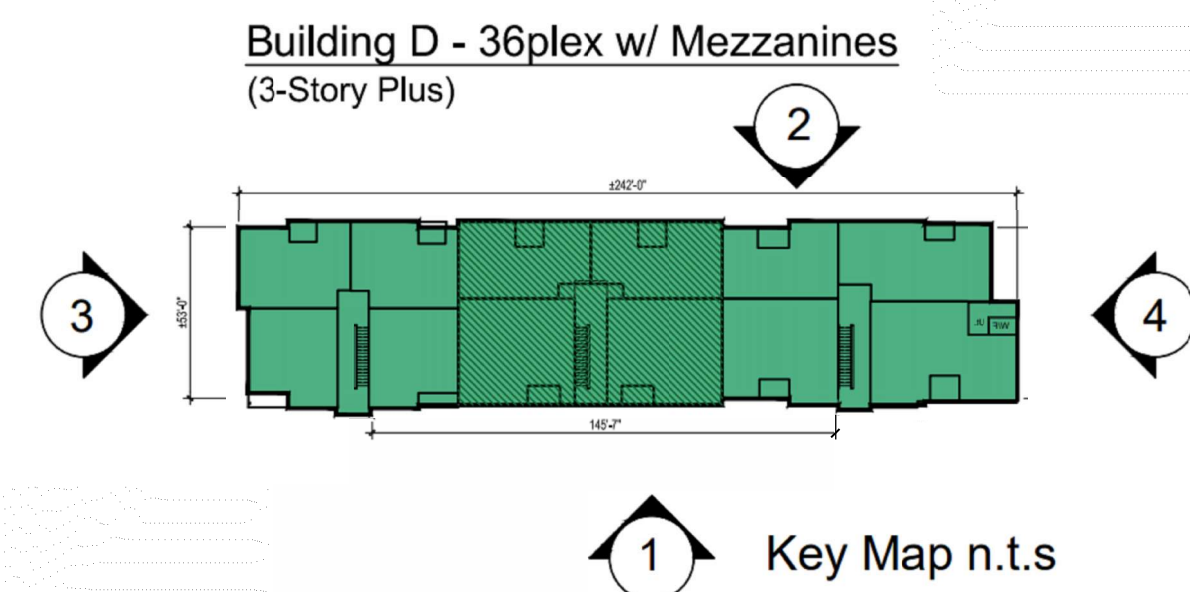
4 BUILDING D - MIRRORED SIDE ELEVATION  
1/16" = 1'-0"



2 BUILDING D - MIRRORED REAR ELEVATION  
1/16" = 1'-0"



1 BUILDING D - MIRRORED FRONT ELEVATION  
1/16" = 1'-0"



#	KEYNOTES - SIP
1	BRICK - RUNNING - COLOR 1
2	BRICK - RUNNING - COLOR 2
3	FIBER CEMENT PANELING - COLOR 1
4	FIBER CEMENT PANELING - COLOR 2
5	FIBER CEMENT PANELING - COLOR 3
6	FIBER CEMENT PANELING - COLOR 4
7	METAL PANEL - COLOR 1
8	METAL PANEL - COLOR 2
9	BOARD AND BATTEN - COLOR 1 (BLUE)
10	BOARD AND BATTEN - COLOR 2
11	VERTICAL SIDING - COLOR 1
12	VERTICAL SIDING - COLOR 2
13	VERTICAL SIDING - COLOR 3
14	VERTICAL SIDING - COLOR 4
15	VERTICAL SIDING - COLOR 5
16	VINYL WINDOW
18	METAL RAILING
19	MECHANICAL SCREEN - 8% OPEN HORIZONTAL TREX PLANKS
19a	MECHANICAL SCREEN - 8% OPEN HORIZONTAL TREX PLANKS
20	STOREFRONT
21	COLUMN
22	ASPHALT SHINGLE ROOFING
23	BOARD & BATTEN - COLOR 3 - DARK GREY
24	STONE - COLOR 1
25	EXTERIOR LIGHT FIXTURE
26	HORIZONTAL SIDING - COLOR 1
27	HORIZONTAL SIDING - COLOR 2
28	HORIZONTAL SIDING - COLOR 3
29	HORIZONTAL SIDING - COLOR 4
30	HORIZONTAL SIDING - COLOR 5
32	DOWNSPOUT

- NOTES:  
1. SEE MATERIAL BOARDS FOR MORE INFORMATION.  
2. SEE SITE PLAN FOR DIMENSIONS BETWEEN ENTRIES.  
3. GROUND FLOOR TRANSPARENCY TO BE MIN. OF 25% MEASURED AS A PERCENTAGE OF GLAZING AT THE BASE OF THE BUILDING.  
4. UPPER FLOOR TRANSPARENCY TO BE MIN. OF 15% GLAZING MEASURED AS A PERCENTAGE OF GLAZING ON THE MIDDLE OF THE BUILDING.  
5. TRIM AROUND WINDOWS SHALL BE A MINIMUM OF THREE AND ONE-HALF (3 1/2) INCHES WIDE, AND TRIM AROUND DOORS SHOULD BE A MINIMUM OF TWO (2) INCHES WIDE.

PREPARED FOR CENTURY COMMUNITIES



PROJECT

COMPARK VILLAGE SOUTH

TOWN OF PARKER, COUNTY OF DOUGLAS, COLORADO 80134

SHEET TITLE

MIRRORED ELEVATIONS

SHEET NUMBER

59A

**COMPARK VILLAGE SOUTH**  
**F1 AMD 2 - MULTIFAMILY**  
**SITE PLAN**  
 LOT 1, COMPARK VILLAGE FILING NO. 1, AMEND NO. 2  
 SOUTH HALF SECTION 6, TOWNSHIP 6 SOUTH, RANGE 66 WEST OF THE 6TH PRINCIPAL MERIDIAN  
 TOWN OF PARKER, COUNTY OF DOUGLAS, STATE OF COLORADO



KEY MAP - n.t.s  
**BUILDING D**

PROJECT NUMBER  
210512  
 DRAWN BY  
 DATE  
09/06/2022

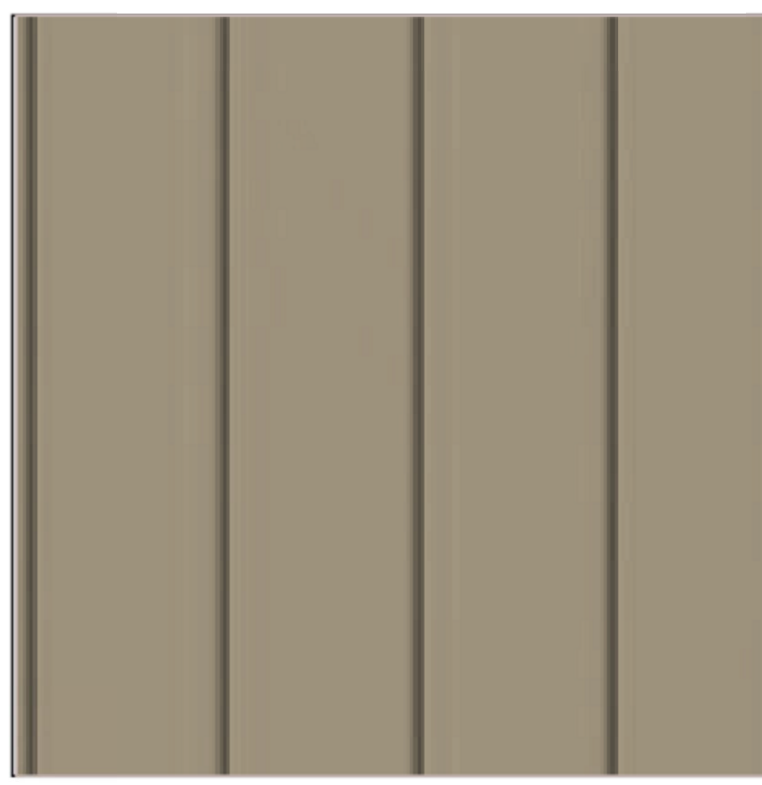


**FRONT ELEVATION**  
 Note: Trim around windows shall be minimum of three and one-half (3-1/2) inches wide, and trim around doors shall be a minimum of (2) inches wide.

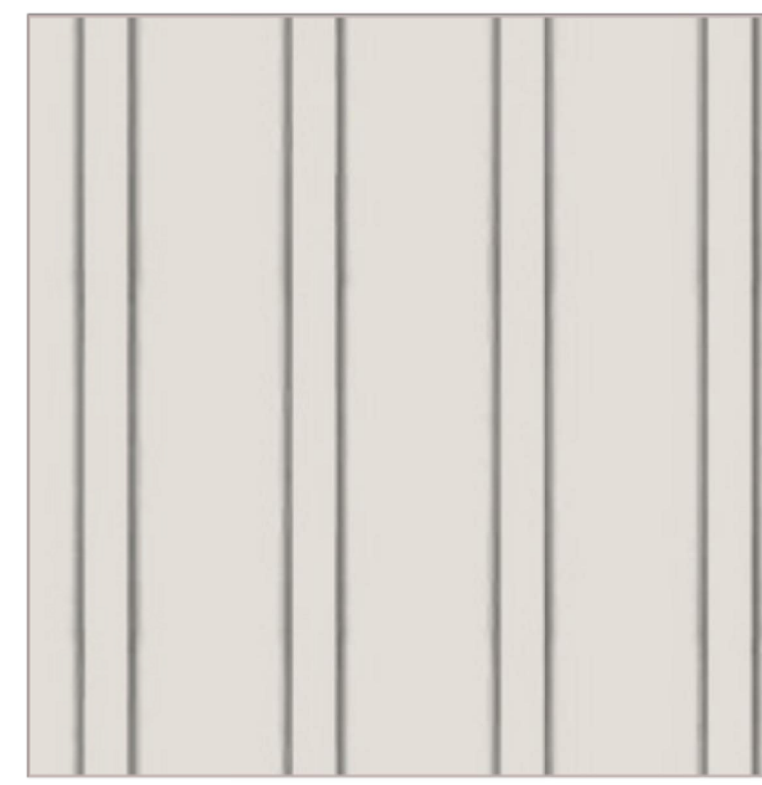
**1 BRICK** LIGHT BRICK



**14 VERTICAL SIDING** (WOOD TONE)



**19 VERTICAL SIDING** (V-GROOVE)



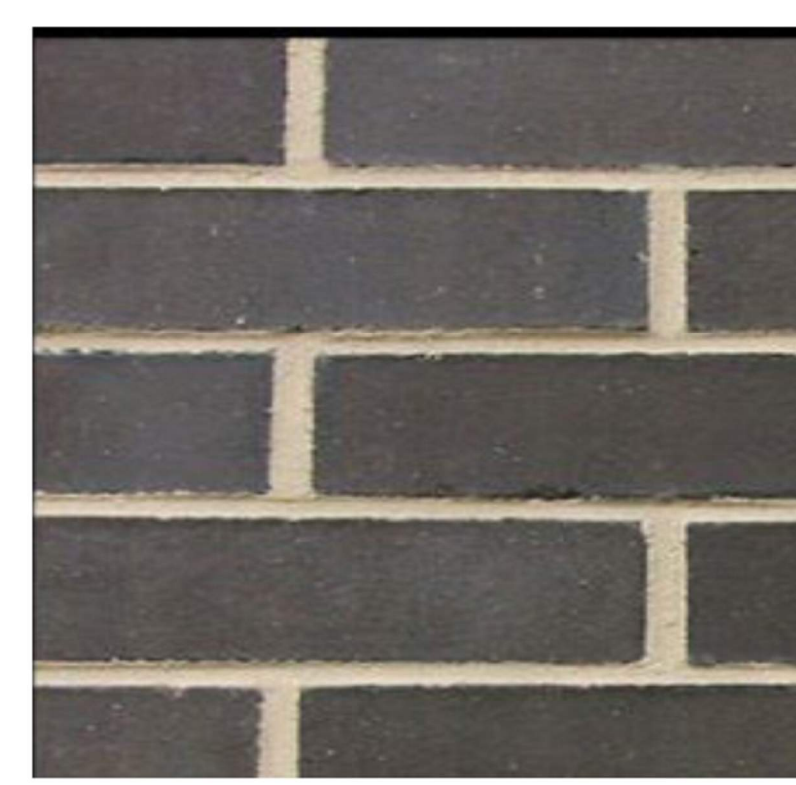
**4 CEMENTITIOUS PANEL** W/ REVEAL



**28 HORIZONTAL SIDING** (V-GROOVE)



**2 BRICK** DARK BRICK



**8 METAL PANEL**



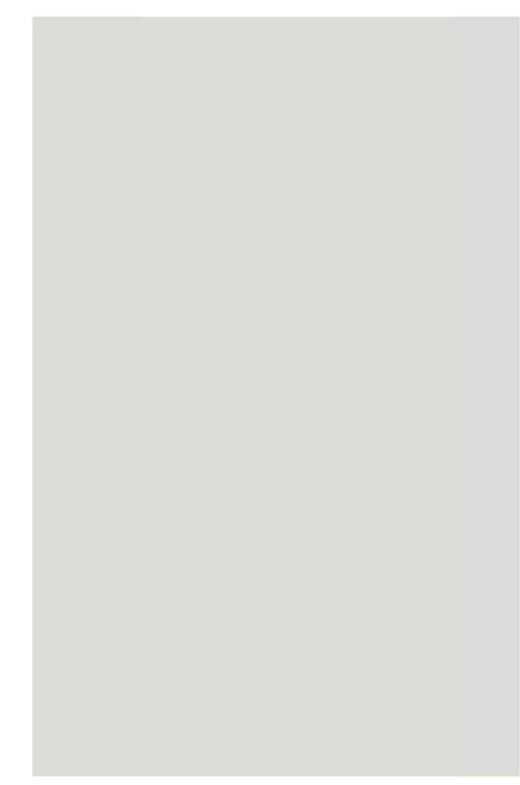
**5 CEMENTITIOUS PANEL**



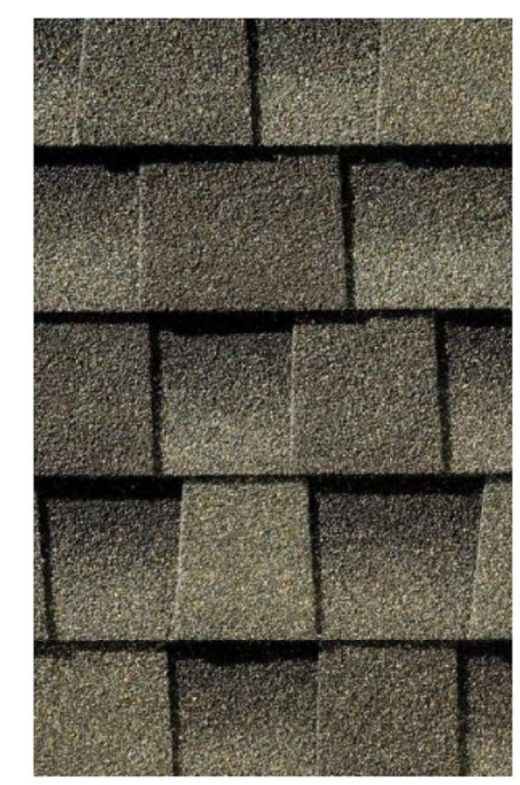
**6 CEMENTITIOUS PANEL**



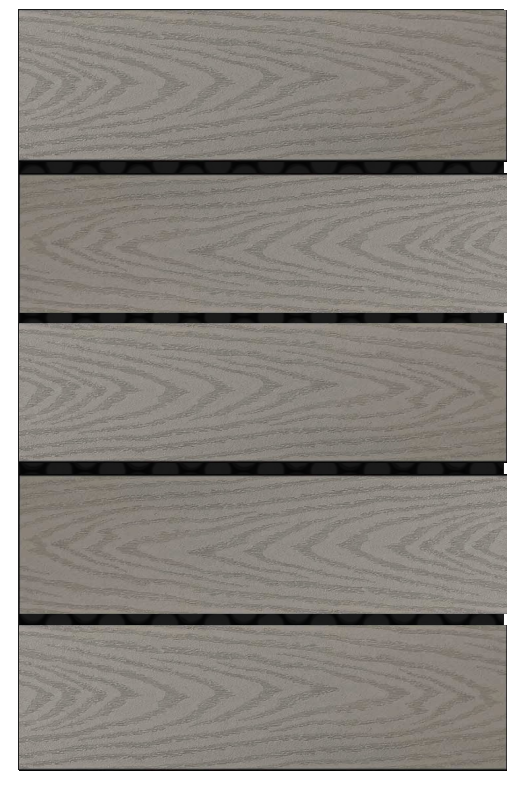
**ADOBE (NON-WHITE)**  
**16 WINDOW FRAME**



**22 ROOF**



**19a ROOF SCREEN**



PREPARED FOR CENTURY COMMUNITIES



PROJECT  
**COMPARK VILLAGE SOUTH**

TOWN OF PARKER, COUNTY OF DOUGLAS, COLORADO 80134

SHEET TITLE  
**MIRRORED BLDG D MATERIAL BOARD**

SHEET NUMBER  
**47A**

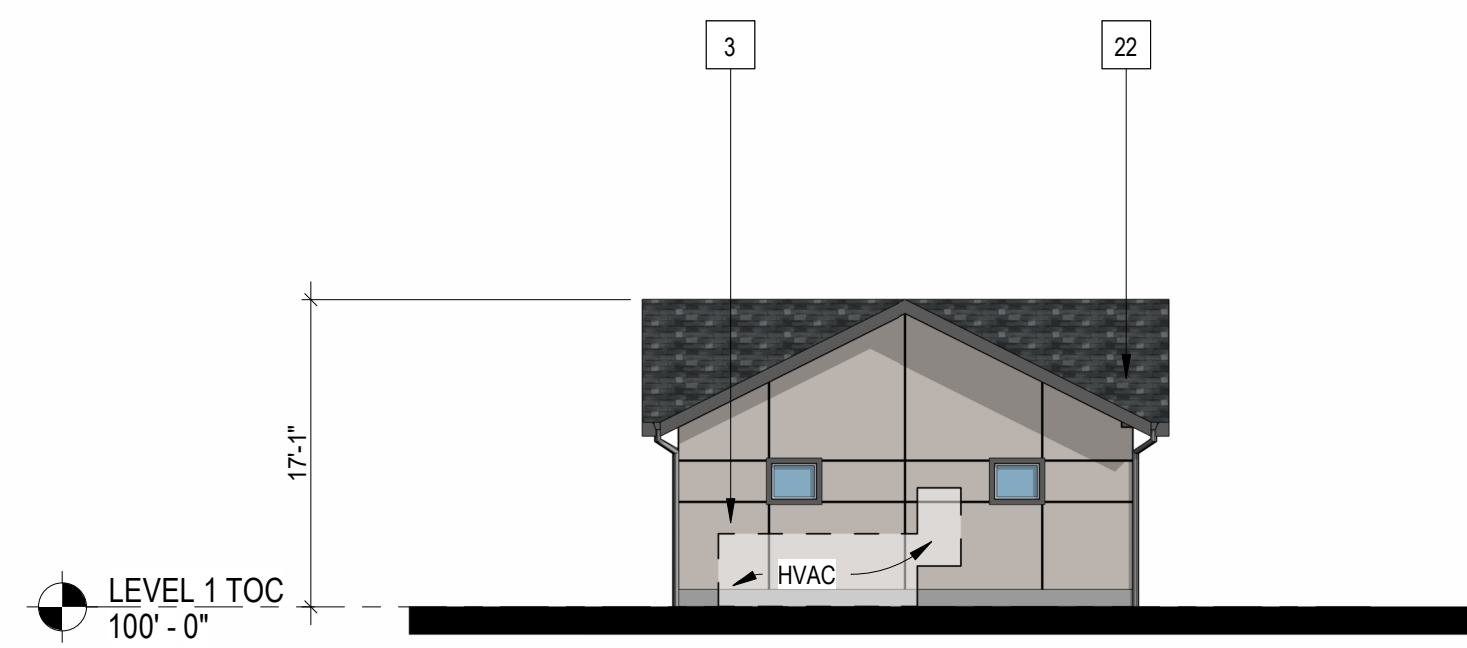
**COMPARK VILLAGE SOUTH  
F1 AMD 2 - MULTIFAMILY  
SITE PLAN**  
LOT 2, COMPARK VILLAGE FILING NO. 1, AMEND NO. 2  
SOUTH HALF SECTION 6, TOWNSHIP 6 SOUTH, RANGE 66 WEST OF THE 6TH PRINCIPAL MERIDIAN  
TOWN OF PARKER, COUNTY OF DOUGLAS, STATE OF COLORADO



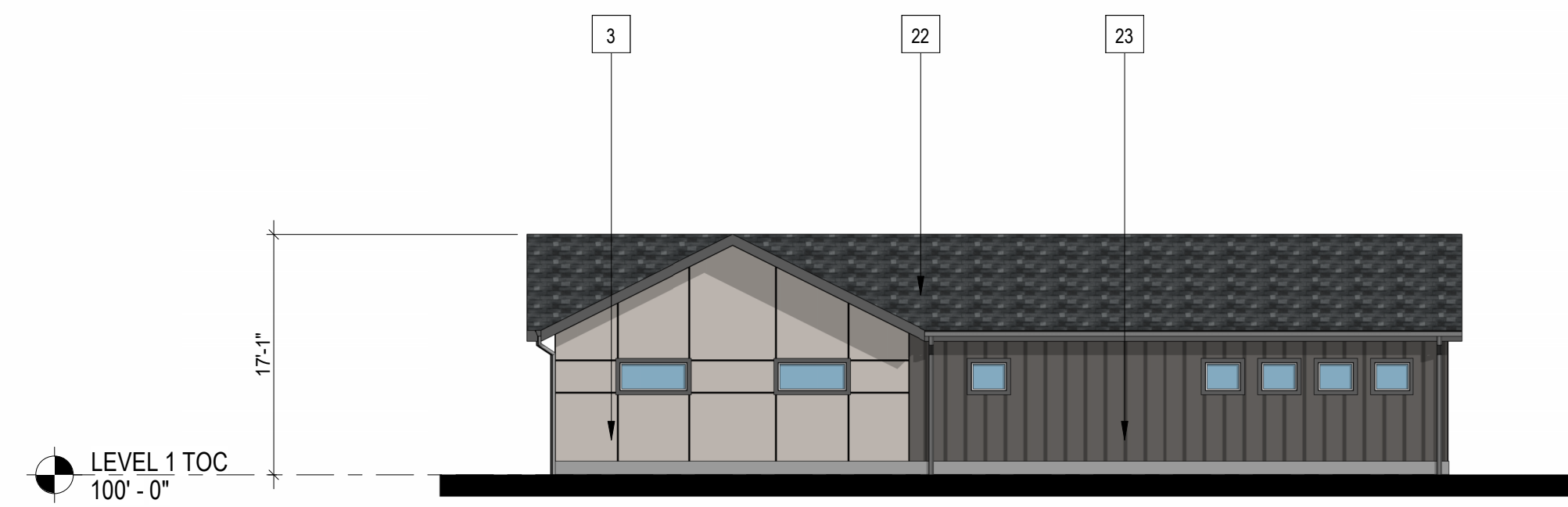
PROJECT NUMBER  
210512  
DRAWN BY  
  
DATE  
01/04/2024



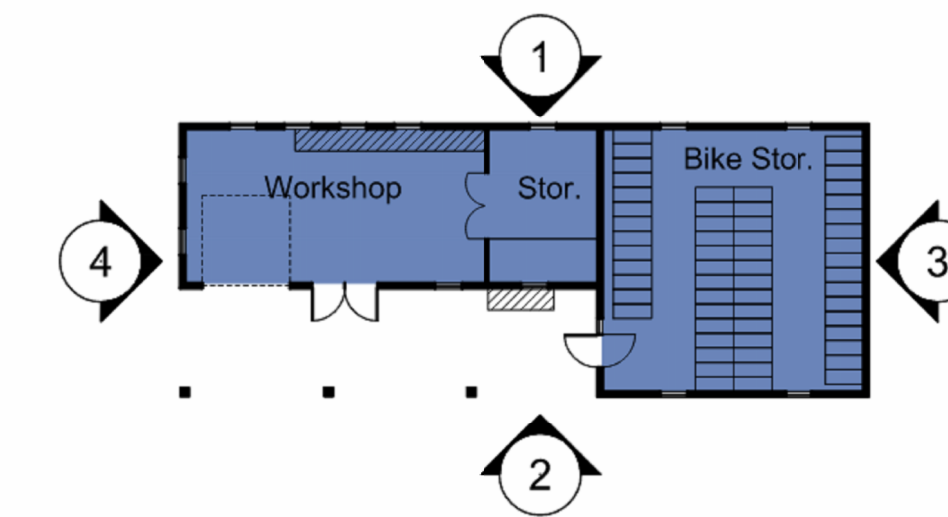
**Architecture + Planning**  
820 16th Street, Suite 500  
Denver, CO 80202  
ktgy.com  
303.825.6400



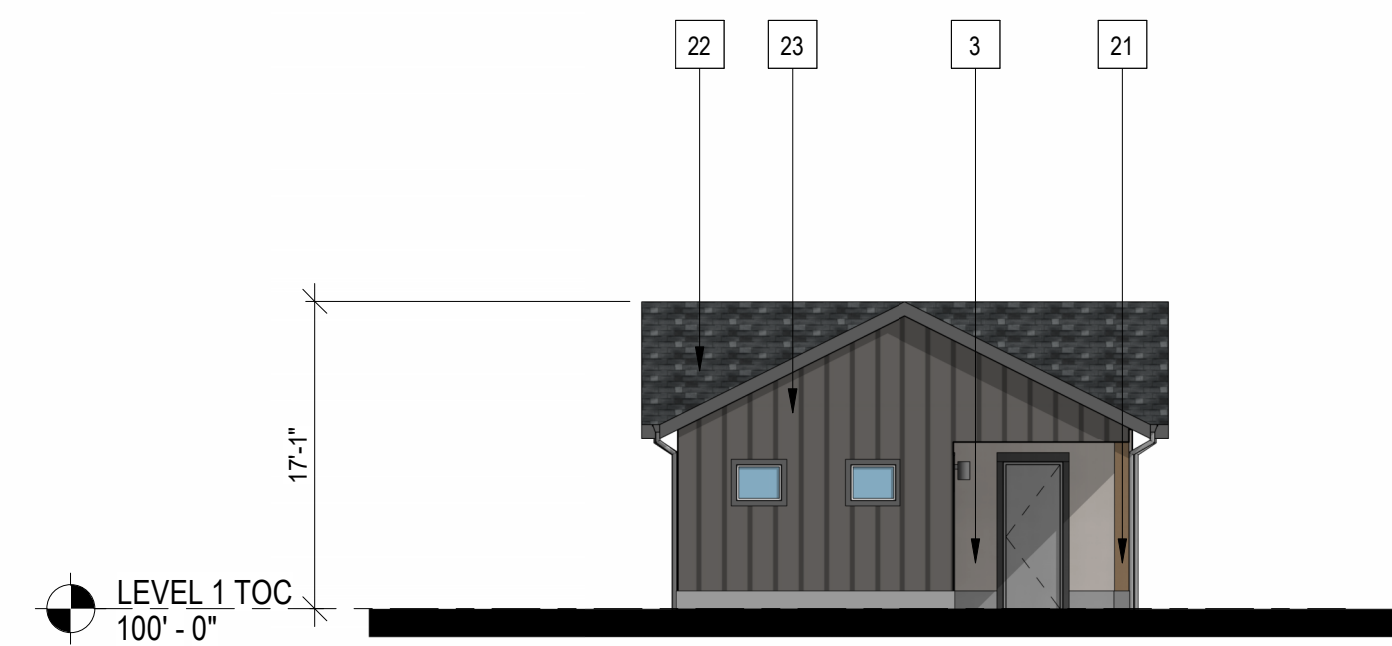
④ BUILDING E - SIDE ELEVATION  
3/32" = 1'-0"



② BUILDING E - REAR ELEVATION  
3/32" = 1'-0"



Key Map n.t.s



③ BUILDING E - SIDE ELEVATION  
3/32" = 1'-0"



① BUILDING E - FRONT ELEVATION  
3/32" = 1'-0"

#	KEYNOTES - SIP
1	BRICK - RUNNING - COLOR 1
2	BRICK - RUNNING - COLOR 2
3	FIBER CEMENT PANELING - COLOR 1
4	FIBER CEMENT PANELING - COLOR 2
5	FIBER CEMENT PANELING - COLOR 3
6	FIBER CEMENT PANELING - COLOR 4
7	METAL PANEL - COLOR 1
8	METAL PANEL - COLOR 2
9	BOARD AND BATTEN - COLOR 1 (BLUE)
10	BOARD AND BATTEN - COLOR 2
11	VERTICAL SIDING - COLOR 1
12	VERTICAL SIDING - COLOR 2
13	VERTICAL SIDING - COLOR 3
14	VERTICAL SIDING - COLOR 4
15	VERTICAL SIDING - COLOR 5
16	VINYL WINDOW
18	METAL RAILING
19	MECHANICAL SCREEN - 58% OPEN WIRE MESH - COLOR 1 (BLACK)
20	STOREFRONT
21	COLUMN
22	ASPHALT SHINGLE ROOFING
23	BOARD & BATTEN - COLOR 3 - DARK GREY
24	STONE - COLOR 1
25	EXTERIOR LIGHT FIXTURE
26	HORIZONTAL SIDING - COLOR 1
27	HORIZONTAL SIDING - COLOR 2
28	HORIZONTAL SIDING - COLOR 3
29	HORIZONTAL SIDING - COLOR 4
30	HORIZONTAL SIDING - COLOR 5
32	DOWNSPOUT

NOTES:  
1. SEE MATERIAL BOARDS FOR MORE INFORMATION.  
2. SEE SITE PLAN FOR DIMENSIONS BETWEEN ENTRIES.  
3. GROUND FLOOR TRANSPARENCY TO BE MIN. OF 25% MEASURED AS A PERCENTAGE OF GLAZING AT THE BASE OF THE BUILDING.  
4. TRIM AROUND WINDOWS SHALL BE A MINIMUM OF THREE AND ONE-HALF (3 1/2) INCHES WIDE, AND TRIM AROUND DOORS SHOULD BE A MINIMUM OF TWO (2) INCHES WIDE.

PREPARED FOR CENTURY COMMUNITIES



PROJECT

**COMPARK VILLAGE SOUTH**

TOWN OF PARKER,  
COUNTY OF DOUGLAS, COLORADO  
80134

SHEET TITLE

**MAINTENANCE BUILDING ELEVATIONS**

SHEET NUMBER