

CONSTRUCTION NOTES

GENERAL NOTES:

- a. ALL DIMENSIONS TO BE FIELD VERIFIED BY OWNER
- b. IF VACUUM EQUIPMENT IS ENCLOSED WITH ROOF/CEILING, REFER TO VENTILATION REQUIREMENTS UNDER EQUIPMENT WARRANTY INFORMATION
- c. PIER DESIGN AND REINFORCEMENT FOR CONCEPTUAL USE ONLY. CONSULT STRUCTURAL ENGINEER IN YOUR AREA FOR SPECIFIC DESIGN CRITERIA.
- d. COMPLY WITH ALL STATE/ COUNTY BUILDING CODES IN YOUR AREA

EQUIPMENT & MATERIAL:

- a. RUN COMPRESSED AIR TO AIR COMPRESSOR LOCATION (BY OTHERS)
- b. WALL PENETRATION: CORE DRILLING MAY BE REQUIRED FIELD VERIFY HEIGHT
- c. **23' 6" Lx 10' W x 4" H MINIMUM FLAT AND LEVEL CONCRETE FLOOR SPACE REQUIRED FOR VACUUM EQUIPMENT VERIFY SEPARATOR WILL FIT THROUGH DOOR (60" CLEAR OPENING WIDTH RECOMMENDED)**

VACUUM & PLUMBING:

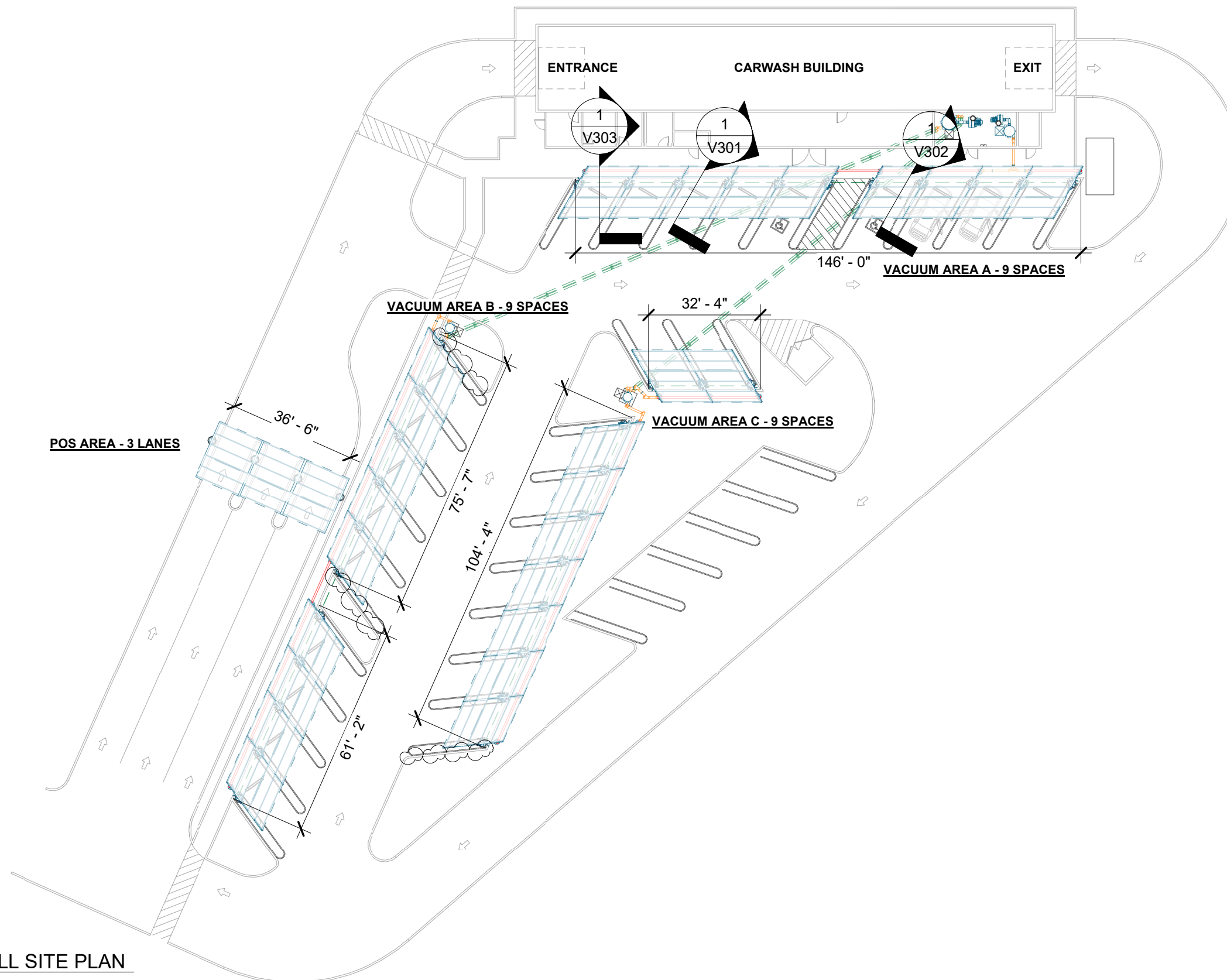
- a. SUPPORT SCHEDULE 40 PVC OVERHEAD DRY/WET VACUUM PIPE EVERY 6' MAXIMUM; USE UNISTRUT & CLAMP OR OTHER SUPPORT (PROVIDED BY OTHERS)
- b. ALL FITTINGS TO BE 'DWV'

POS AREA

QTY ITEM

- 4 POS RIVAL ARCH
- 18 PURLINS
- 3 8' LED LIGHT
- 3 CORRUGATED STEEL AWNING

NOTE: CURBS ADJUSTED 1'-6" FROM CENTER OF FOOTING TO FACE OF CURB TO ALLOW FOR ADEQUATE ARCH SPACING



1 OVERALL SITE PLAN

VACUTECH
 AN **NCS** COMPANY
 1350 HI-TECH DRIVE
 SHERIDAN, WY 82801
 PHONE: (307) 675-1982
 EMAIL: vacinfo@ncswash.com
 WEB: www.vacutecillc.com

COBBLESTONE C82
 9572 TWENTY MILE ROAD
 PARKER, COLORADO 80134

#	Revision	By	Chk	Date
5	REPLACED ALL PALM ARCHES WITH RIVAL ARCHES WITH CORRUGATED ALUMINUM AWNINGS	ML	SL	10/27/23
6	POS ARCHES CHANGED TO RIVAL ARCHES	TJ	ML	11/20/23
7	CHANGED THE CONFIGURATION OF THE POS LAYOUT TO RUN PARALLEL WITH THE LANES	FM	TJ	11/28/23
8	REMOVED 6' LED LIGHTS & INSTALLED 8' LED LIGHTS	FD	TD	12/6/23
9	REVISED FOOTING DETAILS AND GENERAL STRUCTURAL NOTES PER ENGINEERING NOTES	FM	TJ	1/10/24
10	CHANGED 13" MAT RACKS TO 17" MAT RACKS WITH DOOR PROTECTION	TD	TJ	1/16/24

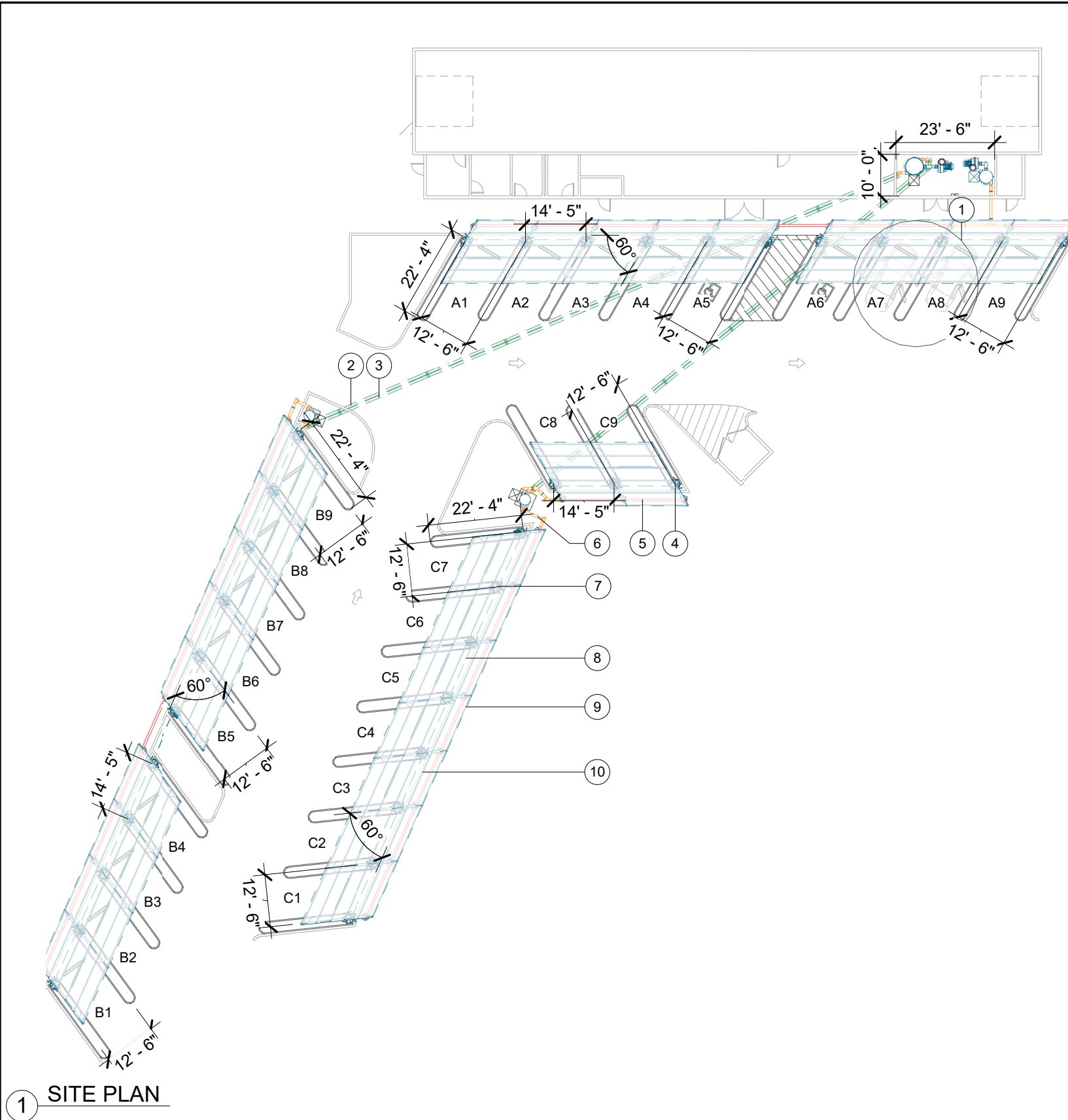
OVERALL SITE PLAN

Project Number	117572
Date	6/5/23
Drawn By	FM
Checked By	TD

V101



1/16/2024 2:18:17 PM



SITE PLAN	
ITEM	DESCRIPTION
1	15' HOSE REACH
2	6" SCH. 40 SOLID CORE PVC BURIED PRIMARY VACUUM PIPE (BY OTHERS)
3	6" SCH. 40 SOLID CORE PVC BURIED BACK-UP VACUUM PIPE (BY OTHERS)
4	SINGLE USER RIVAL ARCH AT ENDS OF VACUUM SPACES
5	6" OVERHEAD ALUMINUM VACUUM TUBE
6	6" OVERHEAD SCH. 40 SOLID CORE PVC VACUUM PIPE
7	DUAL USER RIVAL ARCH BETWEEN VACUUM SPACES
8	BURIED COMPRESSED AIR LINE (BY OTHERS)
9	CORRUGATED STEEL AWNING BERRIDGE DEEP - DECK PANEL - 22 GA (1.5" TALL
10	PURLIN

VACUUM AREA A

QTY	ITEM
4	SINGLE USER RIVAL ARCH
7	DUAL USER RIVAL ARCH
9	CREVICE VACUUM TOOL & HOLDER
9	SONNY'S VACUUM TOOL & HOLDER
4	ADA MOUNTING BRACKET
11	U SHAPED TOOL HANGER BRACKET
8	AUTOVAC TOOL ADAPTER BRACKET
18	1-1/2"x15' RAPIDLOCK HOSE
18	AIR NOZZLE & HOSE (BY OTHERS)
11	AIR TOOL HANGER
54	PURLINS
5	17" MAT RACK WITH DOOR PROTECTION
11	30 GALLON (FLOOR MOUNTED) WASTE RECEPTACLE
6	TOWEL BIN
9	CORRUGATED ALUMINUM AWNING
9	8' LED LIGHT
3	96"-140" ADJUSTABLE OVERHEAD PIPE SUPPORT

VACUUM AREA C

QTY	ITEM
4	SINGLE USER RIVAL ARCH
7	DUAL USER RIVAL ARCH
9	CREVICE VACUUM TOOL & HOLDER
9	SONNY'S VACUUM TOOL & HOLDER
11	U SHAPED TOOL HANGER BRACKET
7	AUTOVAC TOOL ADAPTER BRACKET
18	1-1/2"x15' RAPIDLOCK HOSE
18	AIR NOZZLE & HOSE (BY OTHERS)
11	AIR TOOL HANGER
54	PURLINS
4	AIR ACCESS DOOR WITH FITTINGS NO HANGER
5	17" MAT RACK WITH DOOR PROTECTION
11	30 GALLON (FLOOR MOUNTED) WASTE RECEPTACLE
6	TOWEL BIN
9	CORRUGATED ALUMINUM AWNING
9	8' LED LIGHT

VACUUM AREA B

QTY	ITEM
4	SINGLE USER RIVAL ARCH
7	DUAL USER RIVAL ARCH
9	CREVICE VACUUM TOOL & HOLDER
9	SONNY'S VACUUM TOOL & HOLDER
11	U SHAPED TOOL HANGER BRACKET
7	AUTOVAC TOOL ADAPTER BRACKET
18	1-1/2"x15' RAPIDLOCK HOSE
18	AIR NOZZLE & HOSE (BY OTHERS)
11	AIR TOOL HANGER
54	PURLINS
4	AIR ACCESS DOOR WITH FITTINGS NO HANGER
5	17" MAT RACK WITH DOOR PROTECTION
11	30 GALLON (FLOOR MOUNTED) WASTE RECEPTACLE
6	TOWEL BIN
9	CORRUGATED ALUMINUM AWNING
7	8' LED LIGHT
1	96"-140" ADJUSTABLE OVERHEAD PIPE SUPPORT

VACUUM EQUIPMENT A

QTY	ITEM
1	40HP T4 DIRECT DRIVE TURBINE (HIGH ELEVATION)
1	8" T4 INDOOR EXHAUST SILENCER
1	38x88 FILTER SEPARATOR
1	96"-140" ADJUSTABLE OVERHEAD PIPE SUPPORT

VACUUM EQUIPMENT B & C

QTY	ITEM
1	75HP T5 DIRECT DRIVE TURBINE (HIGH ELEVATION)
1	8" T5 INDOOR EXHAUST SILENCER
2	31x60 PRIMARY SEPARATOR
1	50x108 FILTER SEPARATOR

1 SITE PLAN

VACUTECH
 AN **NCS** COMPANY
 1350 HI-TECH DRIVE
 SHERIDAN, WY 82801
 PHONE: (307) 675-1982
 EMAIL: vacinfo@ncswash.com
 WEB: www.vacutecillc.com

COBBLESTONE C82
 9572 TWENTY MILE ROAD
 PARKER, COLORADO 80134

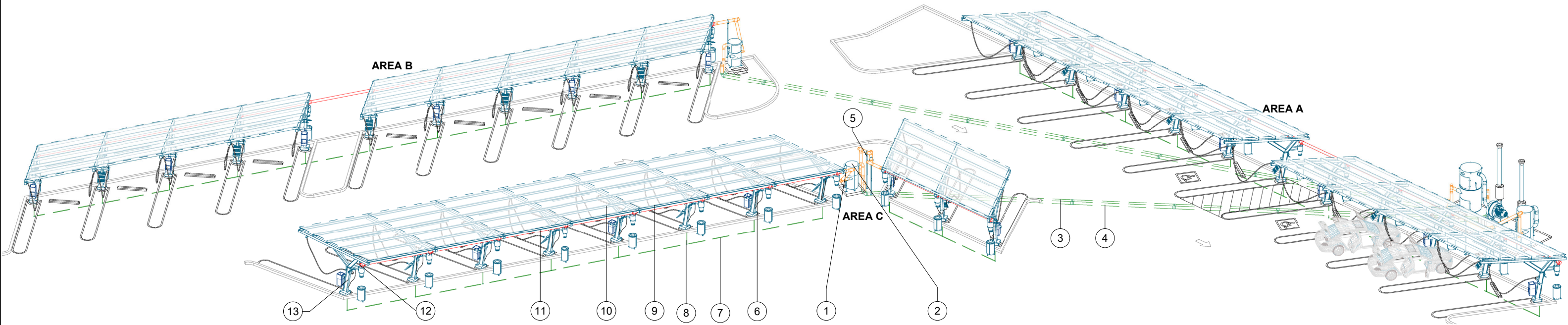
#	Revision	By	Chk	Date
5	REPLACED ALL PALM ARCHES WITH RIVAL ARCHES WITH CORRUGATED ALUMINUM AWNINGS	ML	SL	10/27/23
6	POS ARCHES CHANGED TO RIVAL ARCHES	TJ	ML	11/20/23
7	CHANGED THE CONFIGURATION OF THE POS LAYOUT TO RUN PARALLEL WITH THE LANES	FM	TJ	11/28/23
8	REMOVED 6' LED LIGHTS & INSTALLED 8' LED LIGHTS	FD	TD	12/6/23
9	REVISED FOOTING DETAILS AND GENERAL STRUCTURAL NOTES PER ENGINEERING NOTES	FM	TJ	1/10/24
10	CHANGED 13" MAT RACKS TO 17" MAT RACKS WITH DOOR PROTECTION	TD	TJ	1/16/24

VACUUM SITE PLAN	
Project Number	117572
Date	6/5/23
Drawn By	FM
Checked By	TD

V111

1/16/2024 2:18:23 PM

SITE ISOMETRIC	
ITEM	DESCRIPTION
1	6" OVERHEAD SCH. 40 SOLID CORE PVC VACUUM PIPE
2	31x60 PRIMARY SEPARATOR
3	6" SCH. 40 SOLID CORE PVC BURIED PRIMARY VACUUM PIPE (BY OTHERS)
4	6" SCH. 40 SOLID CORE PVC BURIED BACK-UP VACUUM PIPE (BY OTHERS)
5	OVERHEAD PIPE SUPPORT
6	DUAL USER RIVAL ARCH BETWEEN VACUUM SPACES
7	BURIED COMPRESSED AIR LINE (BY OTHERS)
8	COMPRESSED AIR LINE RAN UP THROUGH FOOTING WITH 1/2" FIPT ADAPTER, 10" ABOVE FOOTING GRADE (BY OTHERS)
9	CORRUGATED STEEL AWNING BERRIDGE DEEP - DECK PANEL - 22 GA (1.5" TALL
10	PURLIN
11	6" OVERHEAD ALUMINUM VACUUM TUBE
12	6" CLEAN-OUT (TYP.)
13	SINGLE USER RIVAL ARCH AT ENDS OF VACUUM SPACES



1 SITE ISOMETRIC

VACUTECH
 AN *NCS* COMPANY
 1350 HI-TECH DRIVE
 SHERIDAN, WY 82801
 PHONE: (307) 675-1982
 EMAIL: vacinfo@ncswash.com
 WEB: www.vacutecillc.com

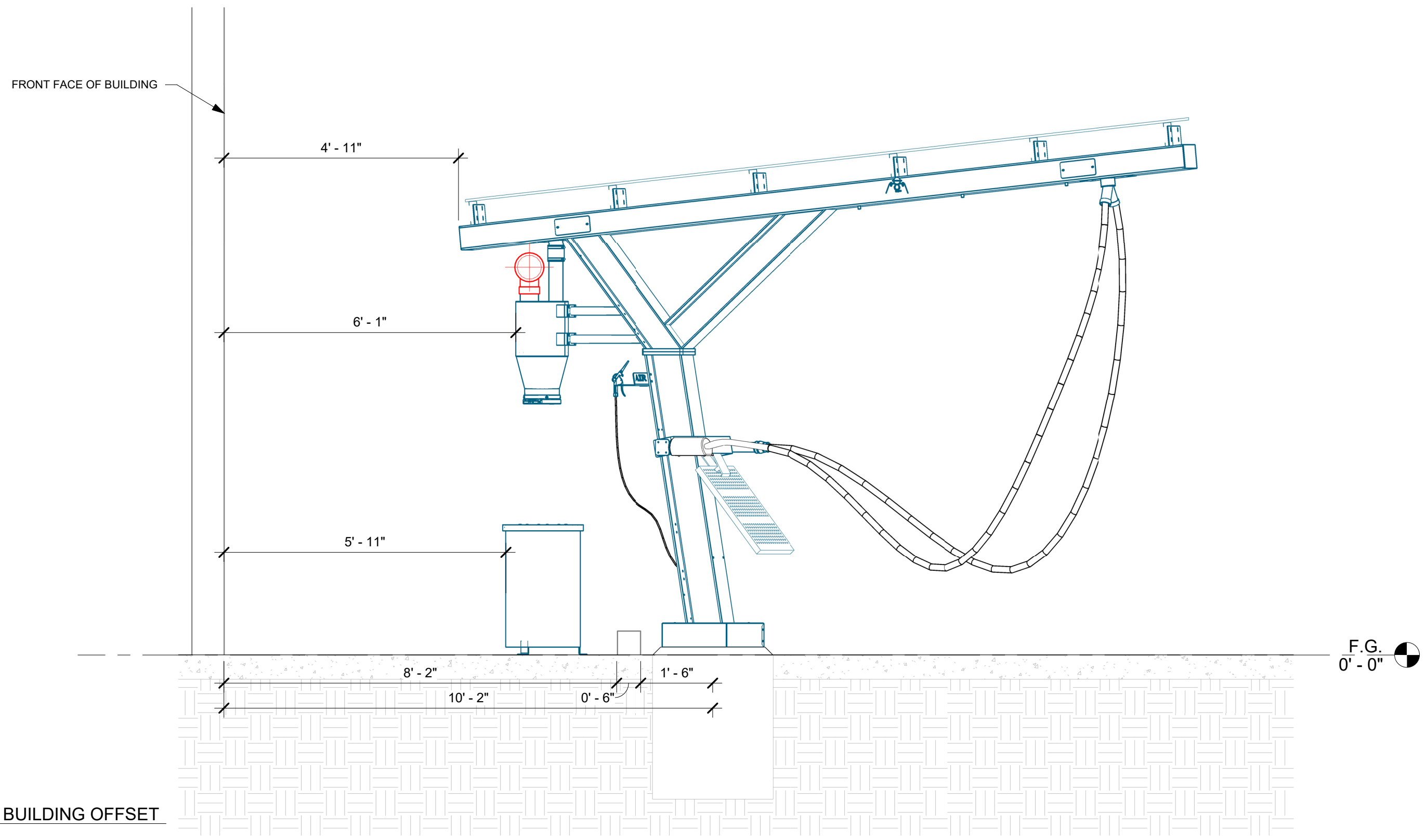
COBBLESTONE C82
 9572 TWENTY MILE ROAD
 PARKER, COLORADO 80134

#	Revision	By	Chk	Date
5	REPLACED ALL PALM ARCHES WITH RIVAL ARCHES WITH CORRUGATED ALUMINUM AWNINGS	ML	SL	10/27/23
6	POS ARCHES CHANGED TO RIVAL ARCHES	TJ	ML	11/20/23
7	CHANGED THE CONFIGURATION OF THE POS LAYOUT TO RUN PARALLEL WITH THE LANES	FM	TJ	11/28/23
8	REMOVED 6' LED LIGHTS & INSTALLED 8' LED LIGHTS	FD	TD	12/6/23
9	REVISED FOOTING DETAILS AND GENERAL STRUCTURAL NOTES PER ENGINEERING NOTES	FM	TJ	1/10/24
10	CHANGED 13" MAT RACKS TO 17" MAT RACKS WITH DOOR PROTECTION	TD	TJ	1/16/24

VACUUM SITE ISOMETRIC	
Project Number	117572
Date	6/5/23
Drawn By	FM
Checked By	TD

V121

1/16/2024 2:18:31 PM



1 AREA A BUILDING OFFSET

VACUTECH
 AN **NCS** COMPANY
 1350 HI-TECH DRIVE
 SHERIDAN, WY 82801
 PHONE: (307) 675-1982
 EMAIL: vacinfo@ncswash.com
 WEB: www.vacutechllc.com

COBBLESTONE C82
 9572 TWENTY MILE ROAD
 PARKER, COLORADO 80134

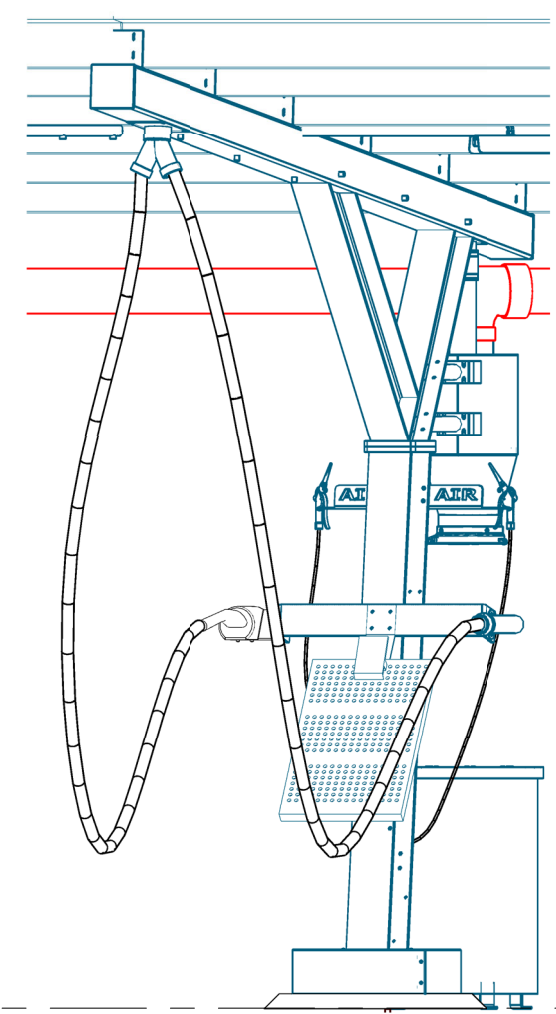
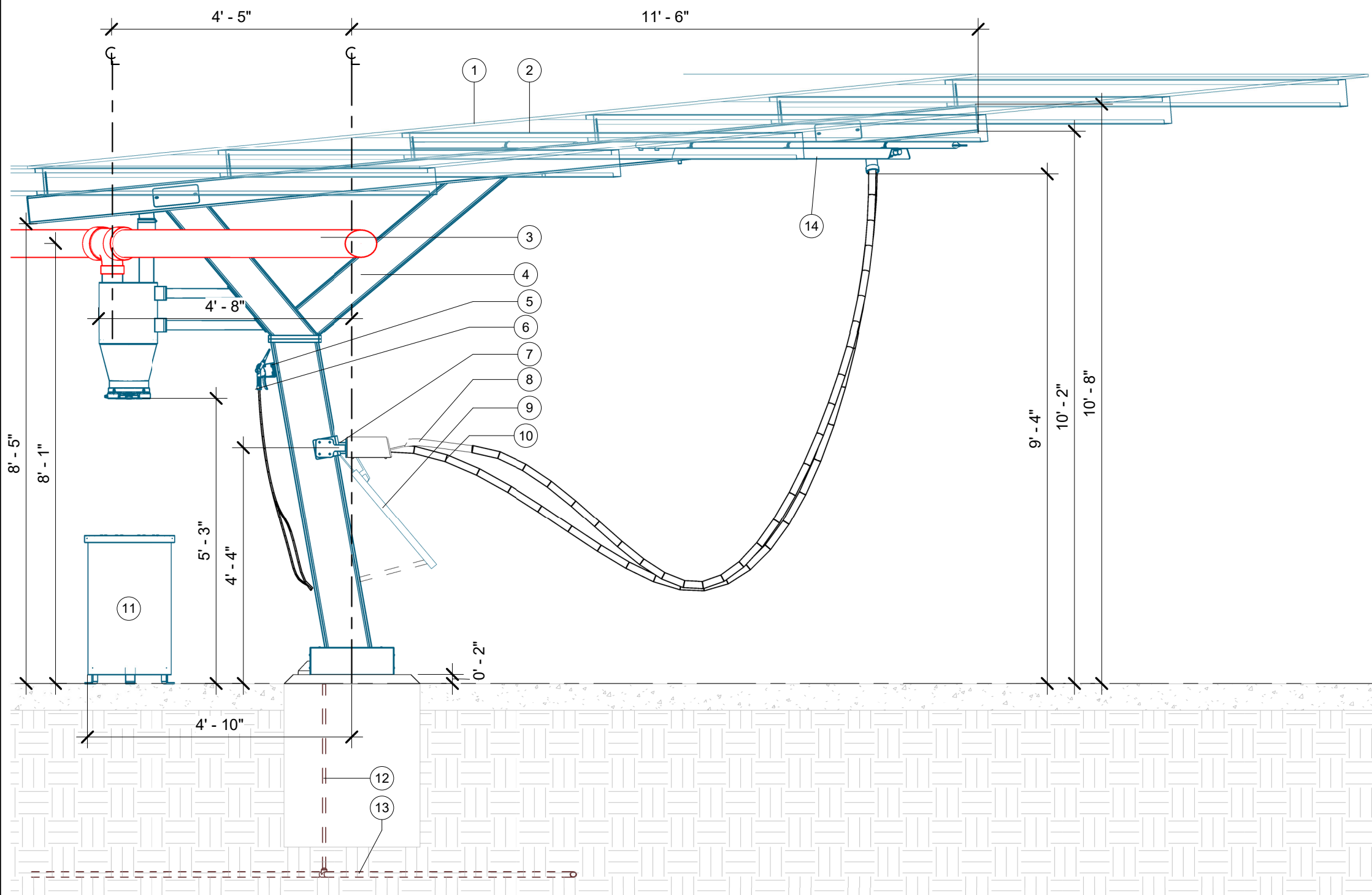
#	Revision	By	Chk	Date
5	REPLACED ALL PALM ARCHES WITH RIVAL ARCHES WITH CORRUGATED ALUMINUM AWNINGS	ML	SL	10/27/23
6	POS ARCHES CHANGED TO RIVAL ARCHES	TJ	ML	11/20/23
7	CHANGED THE CONFIGURATION OF THE POS LAYOUT TO RUN PARALLEL WITH THE LANES	FM	TJ	11/28/23
8	REMOVED 6' LED LIGHTS & INSTALLED 8' LED LIGHTS	FD	TD	12/6/23
9	REVISED FOOTING DETAILS AND GENERAL STRUCTURAL NOTES PER ENGINEERING NOTES	FM	TJ	1/10/24
10	CHANGED 13" MAT RACKS TO 17" MAT RACKS WITH DOOR PROTECTION	TD	TJ	1/16/24

BUILDING OFFSET	
Project Number	117572
Date	6/5/23
Drawn By	FM
Checked By	TD

V303

1/16/2024 2:19:00 PM

FIELD VERIFY ALL DIMENSIONS



F.G.
0' - 0"

1 PARKING ELEVATION

PARKING ELEVATION	
ITEM	DESCRIPTION
1	CORRUGATED STEEL AWNING BERRIDGE DEEP - DECK PANEL - 22 GA (1.5" TALL
2	PURLIN
3	6" OVERHEAD ALUMINUM VACUUM TUBE
4	DUAL USER RIVAL ARCH
5	AIR TOOL HANGER
6	AIR NOZZLE & HOSE
7	CREVICE VACUUM TOOL
8	SONNY'S VACUUM TOOL
9	17" MAT RACK W/ DOOR PROTECTION
10	1-1/2"x15' RAPIDLOCK HOSE
11	30 GALLON WASTE RECEPTACLE
12	COMPRESSED AIR LINE RAN UP THROUGH FOOTING WITH 1/2" FIPT ADAPTER, 10" ABOVE FOOTING GRADE (BY OTHERS)
13	BURIED COMPRESSED AIR LINE (BY OTHERS)
14	8' LED LIGHT

VACUTECH
AN **NCS** COMPANY
1350 HI-TECH DRIVE
SHERIDAN, WY 82801
PHONE: (307) 675-1982
EMAIL: vacinfo@ncswash.com
WEB: www.vacutecillc.com

COBBLESTONE C82
9572 TWENTY MILE ROAD
PARKER, COLORADO 80134

#	Revision	By	Chk	Date
5	REPLACED ALL PALM ARCHES WITH RIVAL ARCHES WITH CORRUGATED ALUMINUM AWNINGS	ML	SL	10/27/23
6	POS ARCHES CHANGED TO RIVAL ARCHES	TJ	ML	11/20/23
7	CHANGED THE CONFIGURATION OF THE POS LAYOUT TO RUN PARALLEL WITH THE LANES	FM	TJ	11/28/23
8	REMOVED 6' LED LIGHTS & INSTALLED 8' LED LIGHTS	FD	TD	12/6/23
9	REVISED FOOTING DETAILS AND GENERAL STRUCTURAL NOTES PER ENGINEERING NOTES	FM	TJ	1/10/24
10	CHANGED 13" MAT RACKS TO 17" MAT RACKS WITH DOOR PROTECTION	TD	TJ	1/16/24

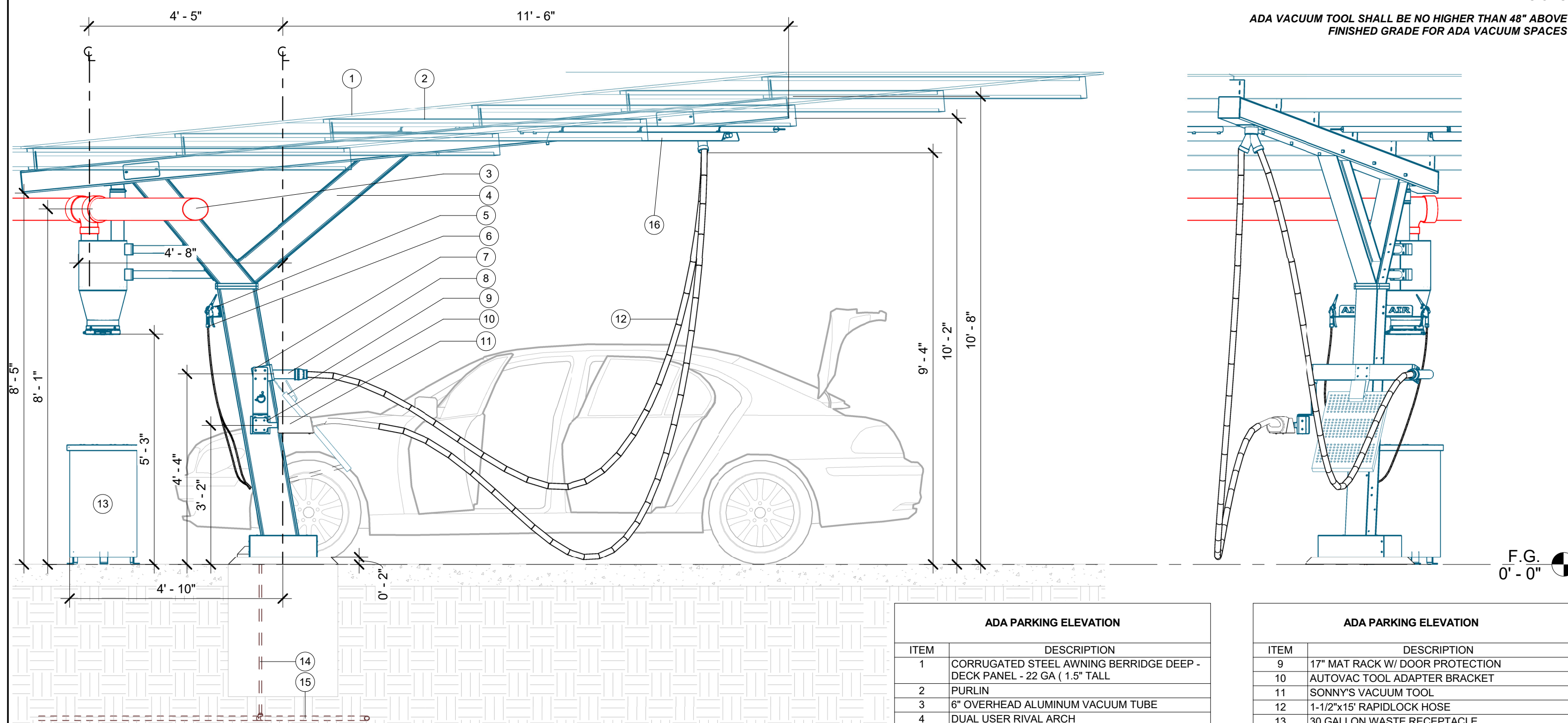
PARKING ELEVATION	
Project Number	117572
Date	6/5/23
Drawn By	FM
Checked By	TD

V301

1/16/2024 2:18:46 PM

FIELD VERIFY ALL DIMENSIONS

ADA VACUUM TOOL SHALL BE NO HIGHER THAN 48" ABOVE FINISHED GRADE FOR ADA VACUUM SPACES



1 ADA PARKING ELEVATION

ADA PARKING ELEVATION	
ITEM	DESCRIPTION
1	CORRUGATED STEEL AWNING BERRIDGE DEEP - DECK PANEL - 22 GA (1.5" TALL
2	PURLIN
3	6" OVERHEAD ALUMINUM VACUUM TUBE
4	DUAL USER RIVAL ARCH
5	AIR TOOL HANGER
6	AIR NOZZLE & HOSE
7	ADA TOOL MOUNT BRACKET
8	CREVICE VACUUM TOOL

ADA PARKING ELEVATION	
ITEM	DESCRIPTION
9	17" MAT RACK W/ DOOR PROTECTION
10	AUTOVAC TOOL ADAPTER BRACKET
11	SONNY'S VACUUM TOOL
12	1-1/2"x15' RAPIDLOCK HOSE
13	30 GALLON WASTE RECEPTACLE
14	COMPRESSED AIR LINE RAN UP THROUGH FOOTING WITH 1/2" FIPT ADAPTER, 10" ABOVE FOOTING GRADE (BY OTHERS)
15	BURIED COMPRESSED AIR LINE (BY OTHERS)
16	8' LED LIGHT

VACUTECH
 AN **NCS** COMPANY
 1350 HI-TECH DRIVE
 SHERIDAN, WY 82801
 PHONE: (307) 675-1982
 EMAIL: vacinfo@ncswash.com
 WEB: www.vacutecillc.com

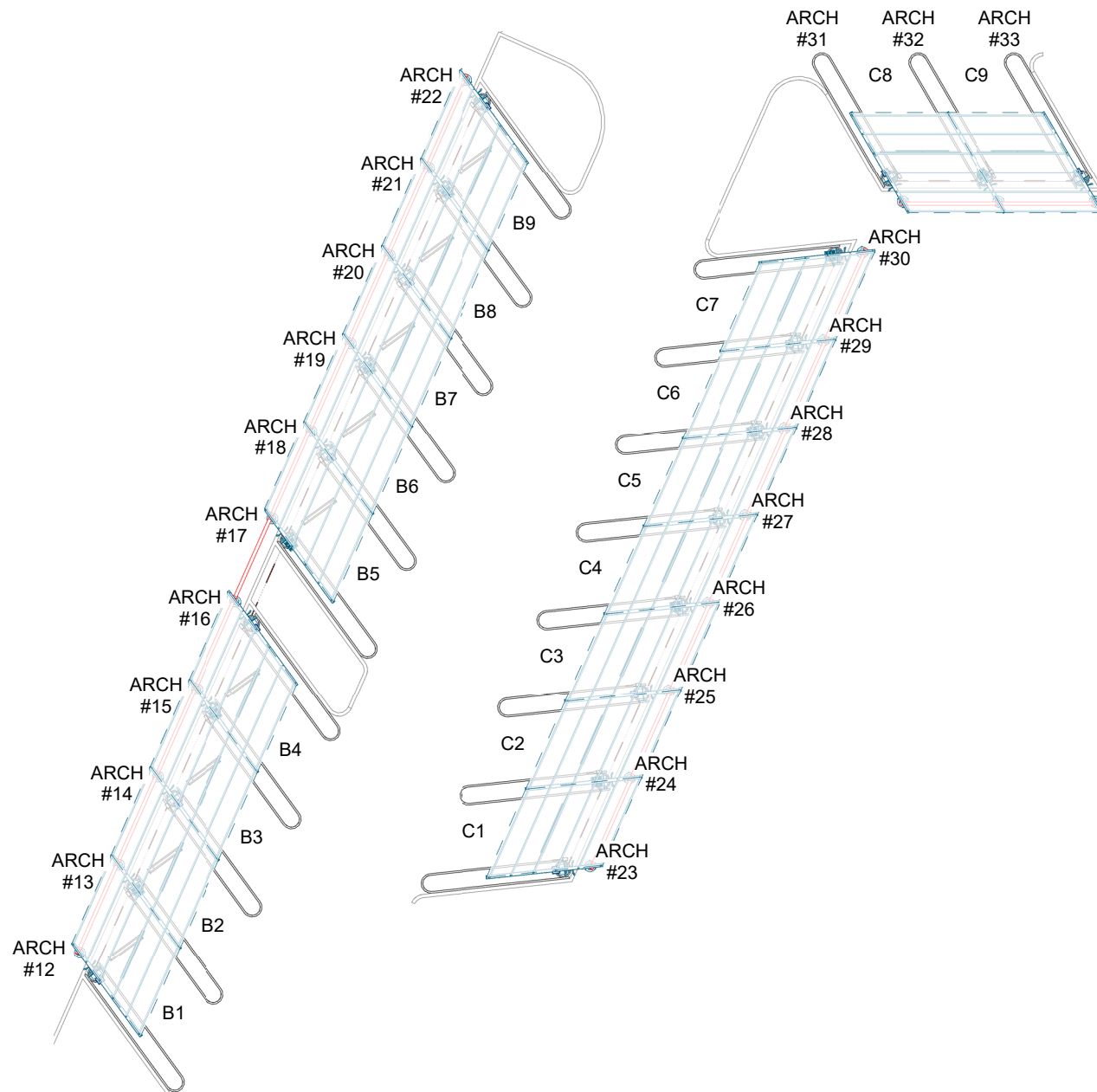
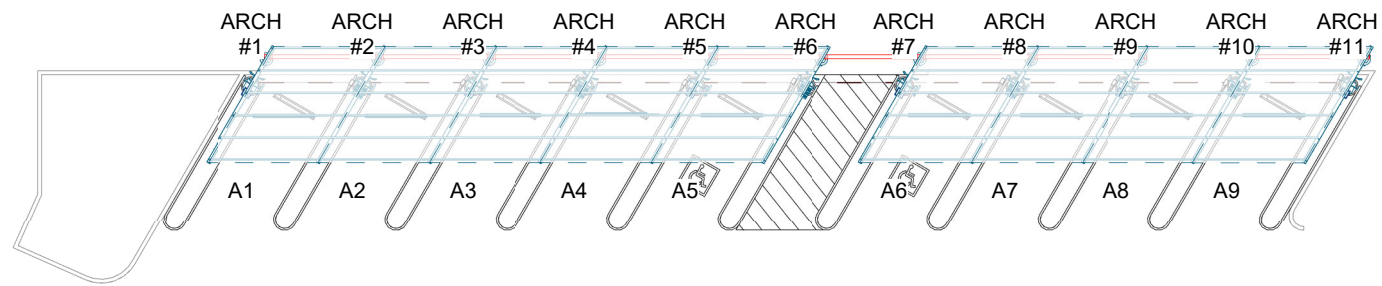
COBBLESTONE C82
 9572 TWENTY MILE ROAD
 PARKER, COLORADO 80134

#	Revision	By	Chk	Date
5	REPLACED ALL PALM ARCHES WITH RIVAL ARCHES WITH CORRUGATED ALUMINUM AWNINGS	ML	SL	10/27/23
6	POS ARCHES CHANGED TO RIVAL ARCHES	TJ	ML	11/20/23
7	CHANGED THE CONFIGURATION OF THE POS LAYOUT TO RUN PARALLEL WITH THE LANES	FM	TJ	11/28/23
8	REMOVED 6' LED LIGHTS & INSTALLED 8' LED LIGHTS	FD	TD	12/6/23
9	REVISED FOOTING DETAILS AND GENERAL STRUCTURAL NOTES PER ENGINEERING NOTES	FM	TJ	1/10/24
10	CHANGED 13" MAT RACKS TO 17" MAT RACKS WITH DOOR PROTECTION	TD	TJ	1/16/24

ADA PARKING ELEVATION	
Project Number	117572
Date	6/5/23
Drawn By	FM
Checked By	TD

V302

1/16/2024 2:18:56 PM



1 ARCH NUMBERING PLAN

VACUTECH
AN *NCS* COMPANY

1350 HI-TECH DRIVE
SHERIDAN, WY 82801
PHONE: (307) 675-1982
EMAIL: vacinfo@ncswash.com
WEB: www.vacutechllc.com

COBBLESTONE C82

9572 TWENTY MILE ROAD
PARKER, COLORADO 80134

#	Revision	By	Chk	Date
5	REPLACED ALL PALM ARCHES WITH RIVAL ARCHES WITH CORRUGATED ALUMINUM AWNINGS	ML	SL	10/27/23
6	POS ARCHES CHANGED TO RIVAL ARCHES	TJ	ML	11/20/23
7	CHANGED THE CONFIGURATION OF THE POS LAYOUT TO RUN PARALLEL WITH THE LANES	FM	TJ	11/28/23
8	REMOVED 6' LED LIGHTS & INSTALLED 8' LED LIGHTS	FD	TD	12/6/23
9	REVISED FOOTING DETAILS AND GENERAL STRUCTURAL NOTES PER ENGINEERING NOTES	FM	TJ	1/10/24
10	CHANGED 13" MAT RACKS TO 17" MAT RACKS WITH DOOR PROTECTION	TD	TJ	1/16/24

ARCH NUMBERING PLAN

Project Number	117572
Date	6/5/23
Drawn By	FM
Checked By	TD

V311

1/16/2024 2:19:06 PM