

JESSE GOLDMAN, ARCHITECT
 2686 S COLORADO BLVD, SUITE 525
 DENVER, CO 80222
 (303) 962-9164

QUICK N CLEAN CAR WASH
 9572 TWENTY MILE ROAD
 PARKER, CO

2686 S COLORADO BLVD, SUITE 525
 DENVER, CO 80222
 (303) 962-9164
 www.cshoa.com

CSHOA

PROJECT	DATE
20037.000	12-19-2023
DRAWN	CHECKED
RJ	JGM

REVISED
 1 AGENCY COMMENTS 3/15/2023
 2 AGENCY COMMENTS 7/28/2023

SHEET TITLE
EXTERIOR ELEVATIONS

SHEET
A5.1
 ORIGINAL SHEET SIZE
 24" x 36"

GENERAL NOTES:

- A. THE REFERENCE ELEVATION MARKED WITH REPRESENTS VERTICAL HEIGHTS RELATIVE TO INTERIOR FLOOR DATUM ASSUMED AT 100'-0" RE: CIVIL FOR ACTUAL ELEVATION.
- B. ALL MATERIAL SYMBOLS ARE FOR REPRESENTATION ONLY. CONTRACTOR IS RESPONSIBLE FOR DETERMINING PROPER COURSING, ETC.
- C. LOCATION FOR ADDRESS SIGNAGE TO BE INSTALLED AS REQUIRED AND APPROVED BY THE CITY OF RIVERSIDE, CA.
- D. ALL COPING WILL EITHER MATCH A COMPLEMENTARY TRIM OR ACCENT COLOR. OR MATCH THE SURROUNDING PREDOMINATE COLOR TO BLEND. GC TO REQUEST COPY OF THE COLOR ELEVATIONS FROM ARCHITECT IF NOT PROVIDED BY OWNER.
- E. ALL ROOFTOP EQUIPMENT TO BE SCREENED BY WALLS OR EQUIPMENT SCREENS.
- F. GC TO CONFIRM EXTERIOR MATERIALS AND FINISHES WITH OWNER.

MATERIAL LEGEND:

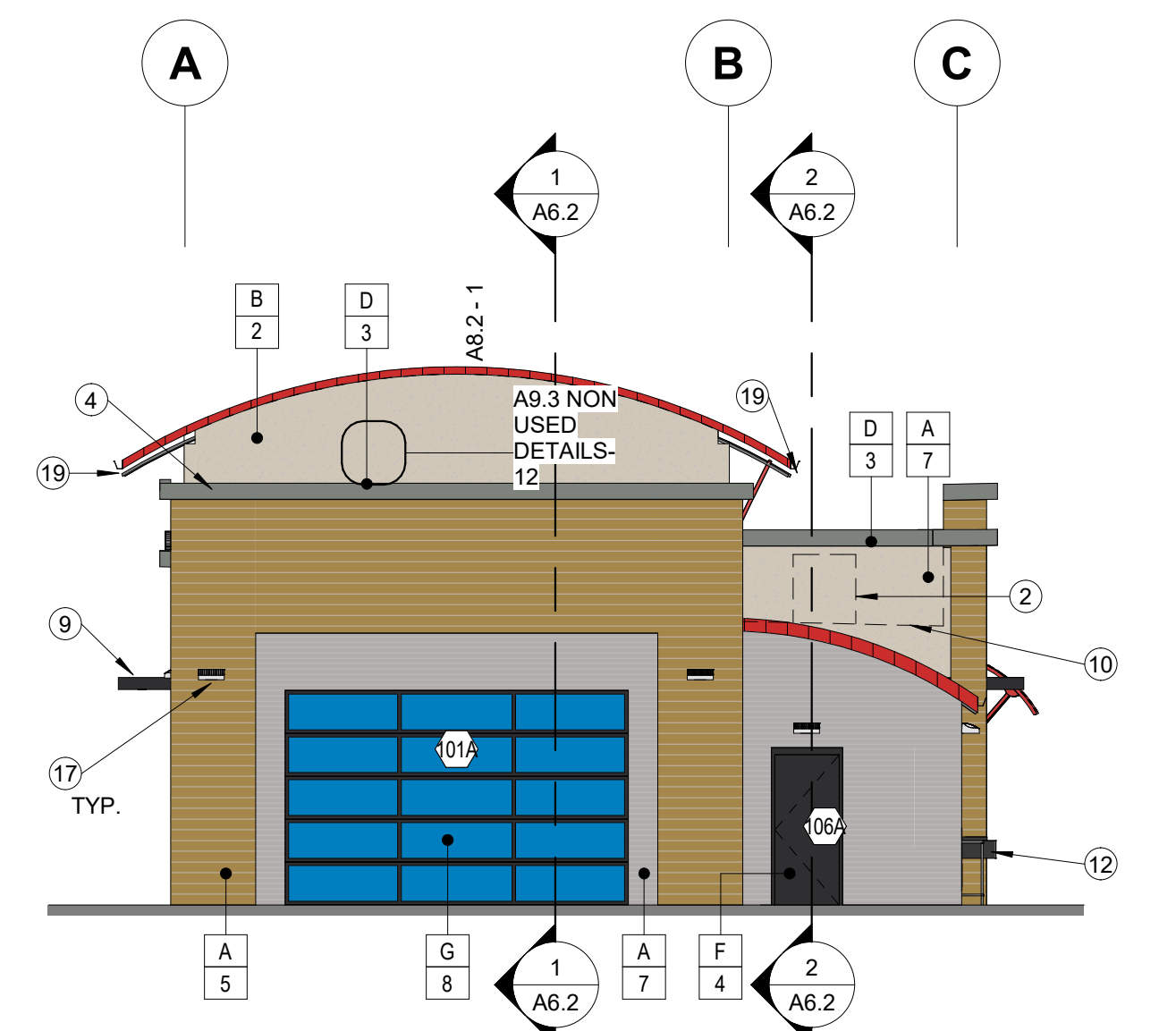
- | | |
|---|--------------------------------------------------------------------------------------------------------------------------------------------------------------------------------------|
| A | HARDIE BOARD SIDING |
| B | STUCCO OVER 8"x16" CMU |
| C | SINGLE-PLY MEMBRANE ROOFING WITH SURFACE APPLIED RIBBING FOR STANDING SEAM APPEARANCE. COLOR OF MEMBRANE AND RIBBING TO MATCH DARK BRONZE OR SIMILAR. VERIFY FINAL COLOR WITH OWNER. |
| D | METAL |
| E | METAL AWNING |
| F | ALUMINUM WINDOW FRAME |
| G | CLEAR GLAZING |
| H | BRICK VENEER |

COLOR LEGEND:

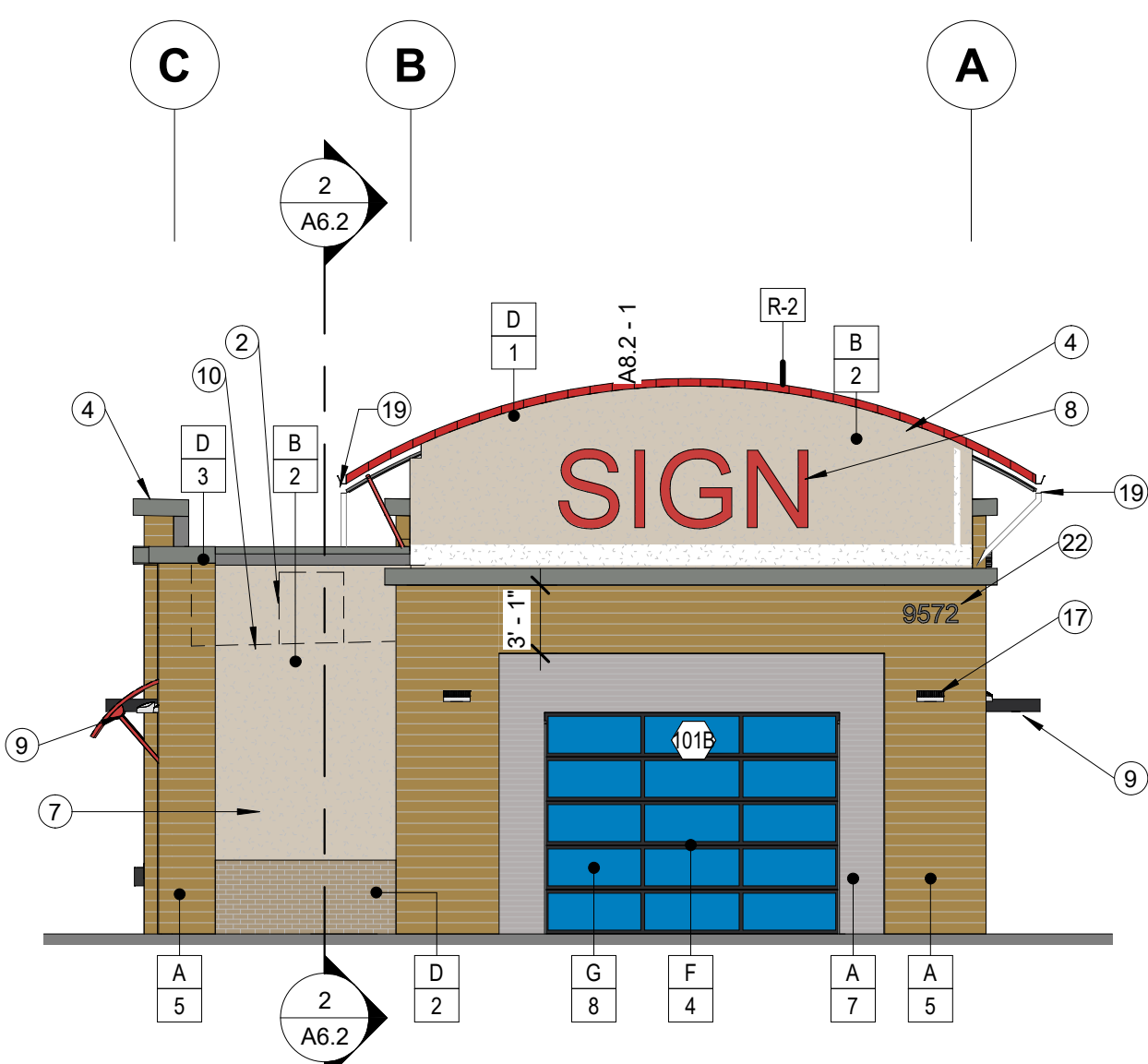
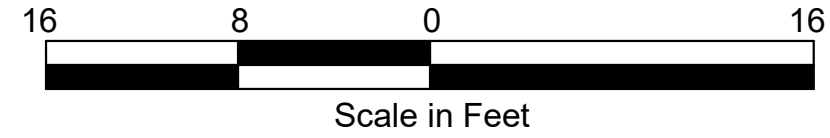
- | | |
|---|-------------------------------------------------|
| 1 | PAINT, BENJAMIN MOORE - RUBY RED 2001-01 |
| 2 | PAINT, SHERWIN WILLIAMS - ACCESSIBLE BEIGE 7036 |
| 3 | PAINT, SHERWIN WILLIAMS - BROWN TBD |
| 4 | PAINT, SHERWIN WILLIAMS - CAVIAR 6990 |
| 5 | FINISH, HARDIE BOARD SIDING - KAHKI BROWN |
| 6 | FINISH, GENERAL SHALE - PEPPERMILL |
| 7 | FINISH, HARDIE BOARD SIDING - NIGHT GREY |
| 8 | FINISH, VITRO GLASS SOLARBAN 70XL - CLEAR GLASS |

SHEET NOTES:

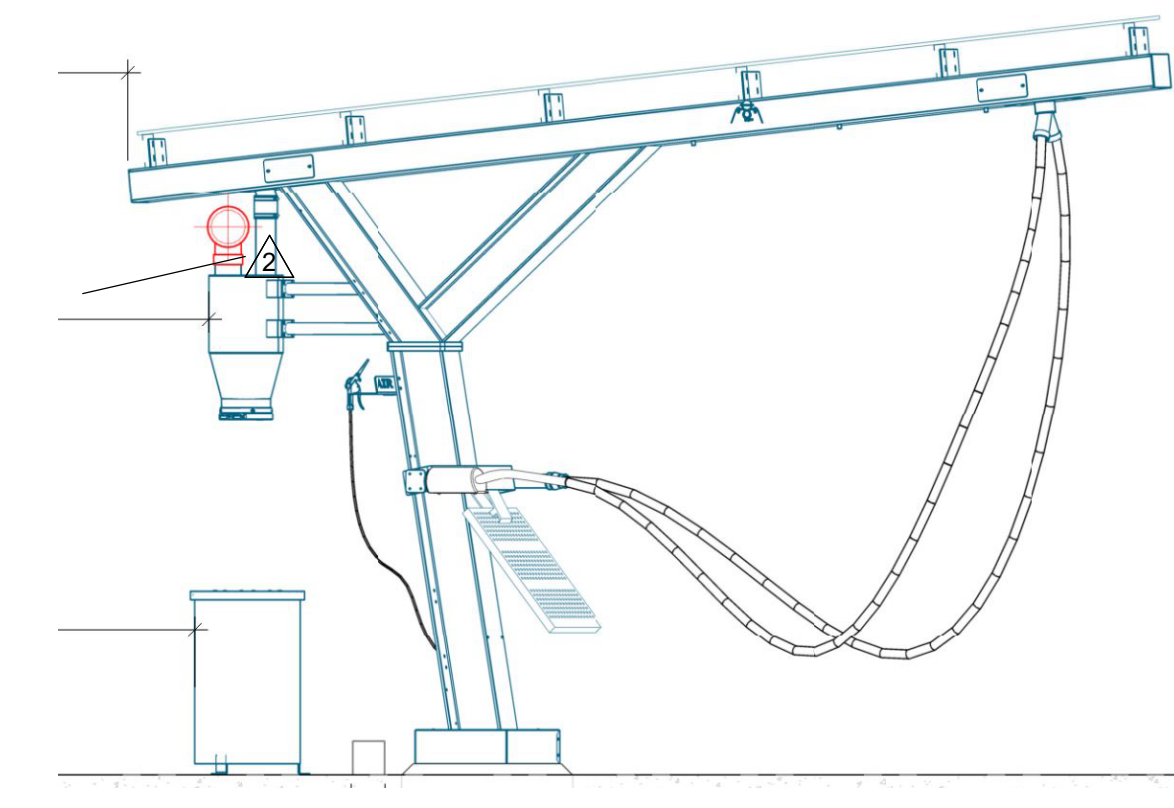
1. VENDING MACHINE BEYOND, OWNER FURNISHED AND OWNER INSTALLED. G.C. TO VERIFY SIZE OF EQUIPMENT WITH OWNER PRIOR TO CONSTRUCTING OPENING.
2. SCREENED MECHANICAL EQUIPMENT, C/W MECHANICAL DRAWINGS. RE: WALL SECTION
3. EXTERIOR LIGHT FIXTURE, MOUNT BOTTOM OF FIXTURE AT 8'-0" A.F.F., RE: ELECTRICAL
4. METAL FLASHING/COPING, RE: COPING DETAILS, G.C TO VERIFY FINAL PAINT COLOR WITH OWNER.
5. MECHANICAL LOUVER, C/W MECHANICAL DRAWINGS. GC TO PREVIEW WITH CARWASH EQUIPMENT PROVIDER CLEARANCE IN/OVER LOUVERS. PAINT TO MATCH ADJACENT SURFACE
6. SERVICE SINK, C/W PLUMBING DRAWINGS.
7. ELECTRICAL SERVICE ENTRANCE SECTION (SES), PAINT.
8. SIGN PACKAGE BY OTHERS AND APPROVED UNDER SEPARATE PERMIT. COORDINATE POWER REQUIREMENTS AND BLOCKING IF REQ'D.
9. CANOPY, RE: DETAILS
10. HIDDEN LINE OF ROOF BEYOND.
11. ROOF OVERFLOW DRAIN DISCHARGE, RE: A7.3 - 11 & 12 AND PLUMBING.
12. HI-LO DRINKING FOUNTAINS RE: PLUMBING AND DETAILS A7.1-16.
13. PAINTED LOGO, COORDINATE SPECIFICS WITH OWNER.
14. KNOX BOX - INSTALL IN LOCATION DIRECTED BY FIRE DEPARTMENT.
15. CONTROL JOINT. SPACE EQUALLY WITHIN BAYS, ALIGN WITH PILASTERS, AND/OR ALIGN WITH OPENINGS.
16. EXTERIOR LIGHT FIXTURE, MOUNT BOTTOM OF FIXTURE AT 10'-6" A.F.F., RE: ELECTRICAL.
17. EXTERIOR LIGHT FIXTURE, MOUNT BOTTOM OF FIXTURE AT 9'-6" A.F.F., RE: ELECTRICAL.
18. EXTERIOR LIGHT FIXTURE, MOUNT BOTTOM OF FIXTURE AT 7'-8" A.F.F., RE: ELECTRICAL.
19. GUTTER AND DOWNSPOUT.
20. BREAK METAL, RE: DETAILS. MATCH COLOR AND FINISH OF ADJACENT METAL PANEL.
21. ELECTRICAL PANELS RE: ELECTRICAL
22. PIN MOUNTED ADDRESS SIGNAGE BY OWNER, MIN. 10-INCHES TALL



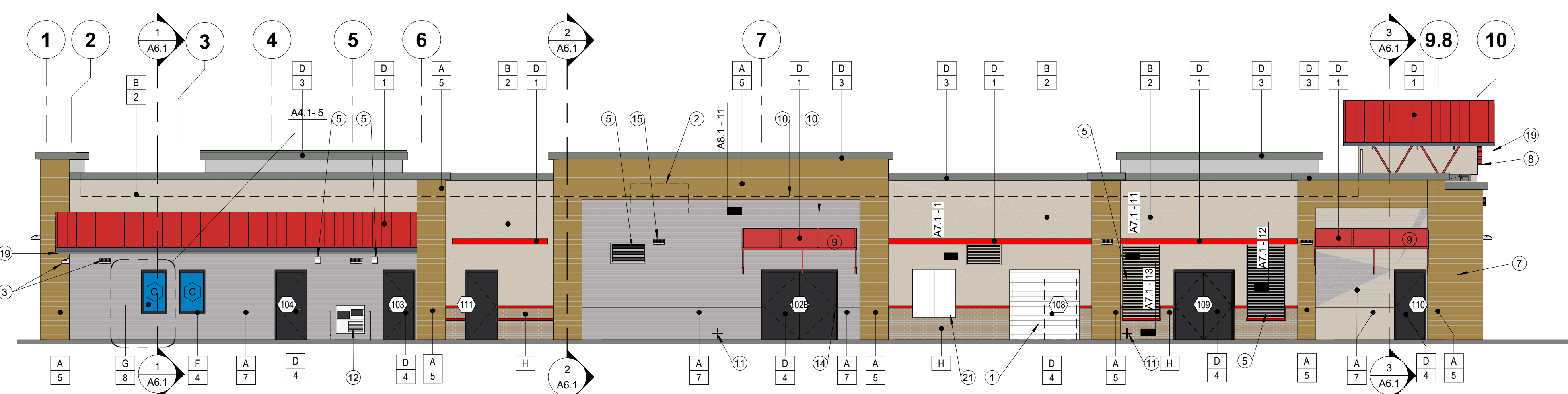
2 NORTH ELEVATION
 1/8" = 1'-0"



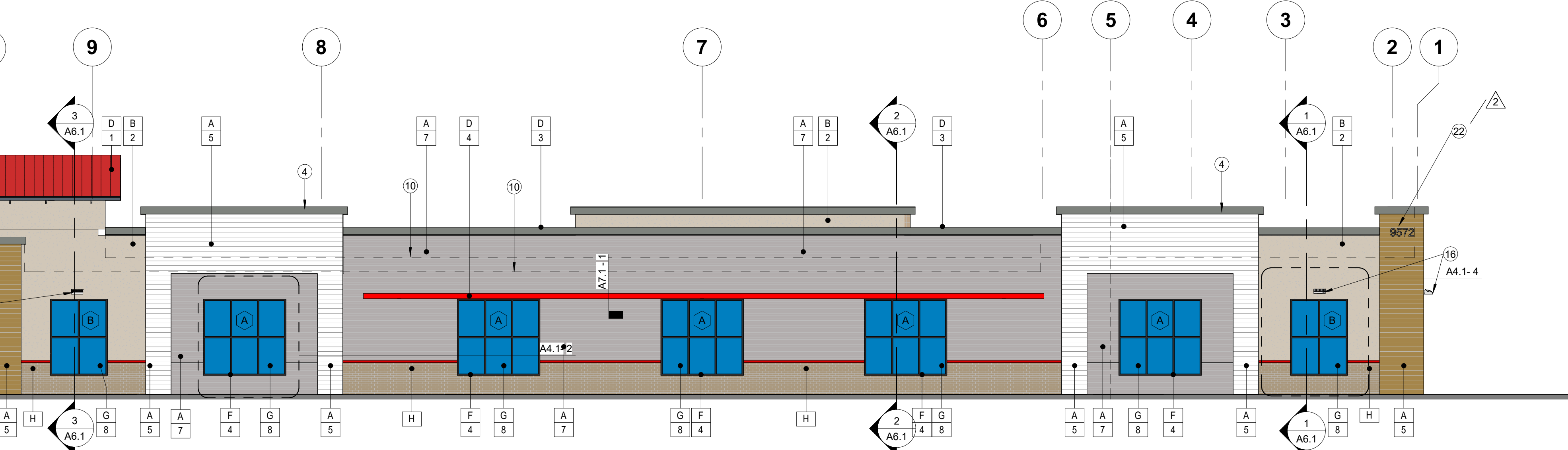
1 SOUTH ELEVATION
 1/8" = 1'-0"



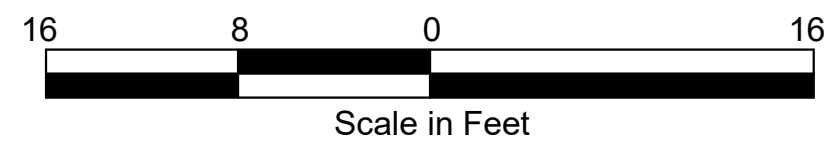
VACUUM ELEVATION

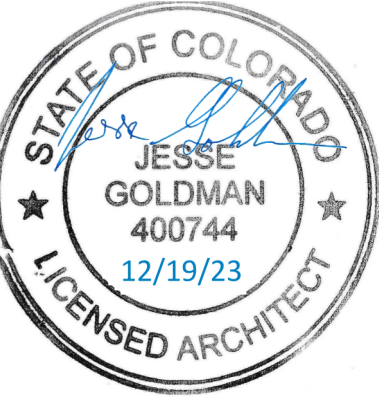


3 WEST ELEVATION
 1/8" = 1'-0"



4 EAST ELEVATION
 1/8" = 1'-0"





JESSE GOLDMAN, ARCHITECT
 2686 S COLORADO BLVD, SUITE 525
 DENVER, CO 80222
 (303) 962-9164

PARKER, CO

QUICK N CLEAN CAR WASH
 9572 TWENTY MILE ROAD
CSHOA

THESE DRAWINGS ARE THE PROPERTY OF THE ARCHITECT/ENGINEER UNLESS OTHERWISE NOTED. THESE DRAWINGS AND SPECIFICATIONS SHALL BE USED ONLY FOR THE PROJECT AND SITE SPECIFICALLY IDENTIFIED HEREIN. ANY REUSE OF THESE DRAWINGS FOR OTHER PROJECTS WITHOUT THE WRITTEN CONSENT OF CSO/A OR ITS AFFILIATES, IS STRICTLY PROHIBITED. © 2023

PROJECT 20037.000	DATE 12-19-2023
DRAWN RJ	CHECKED WRS

REVISED
 1 AGENCY COMMENTS 12/19/2023

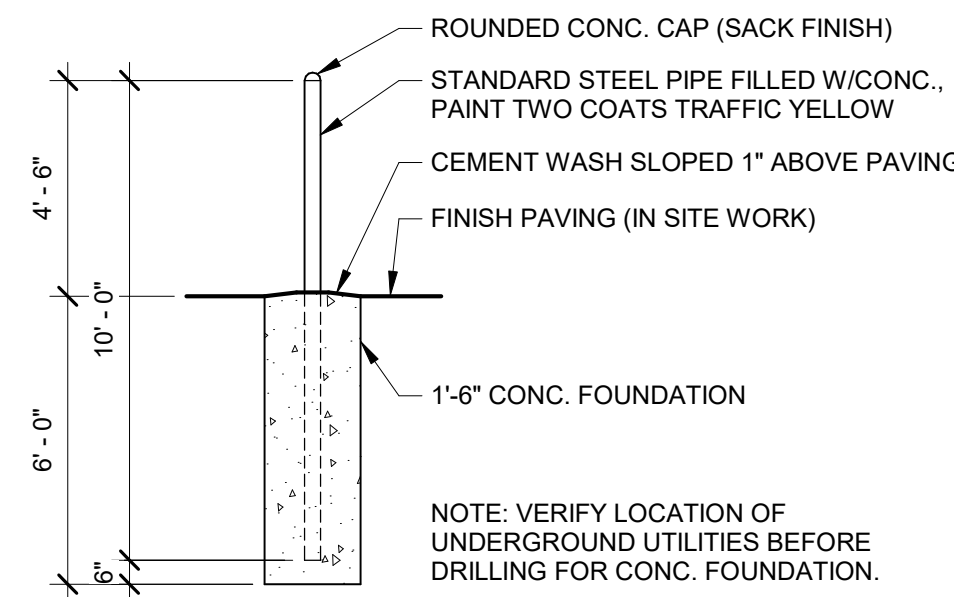
SHEET TITLE

DETAILS

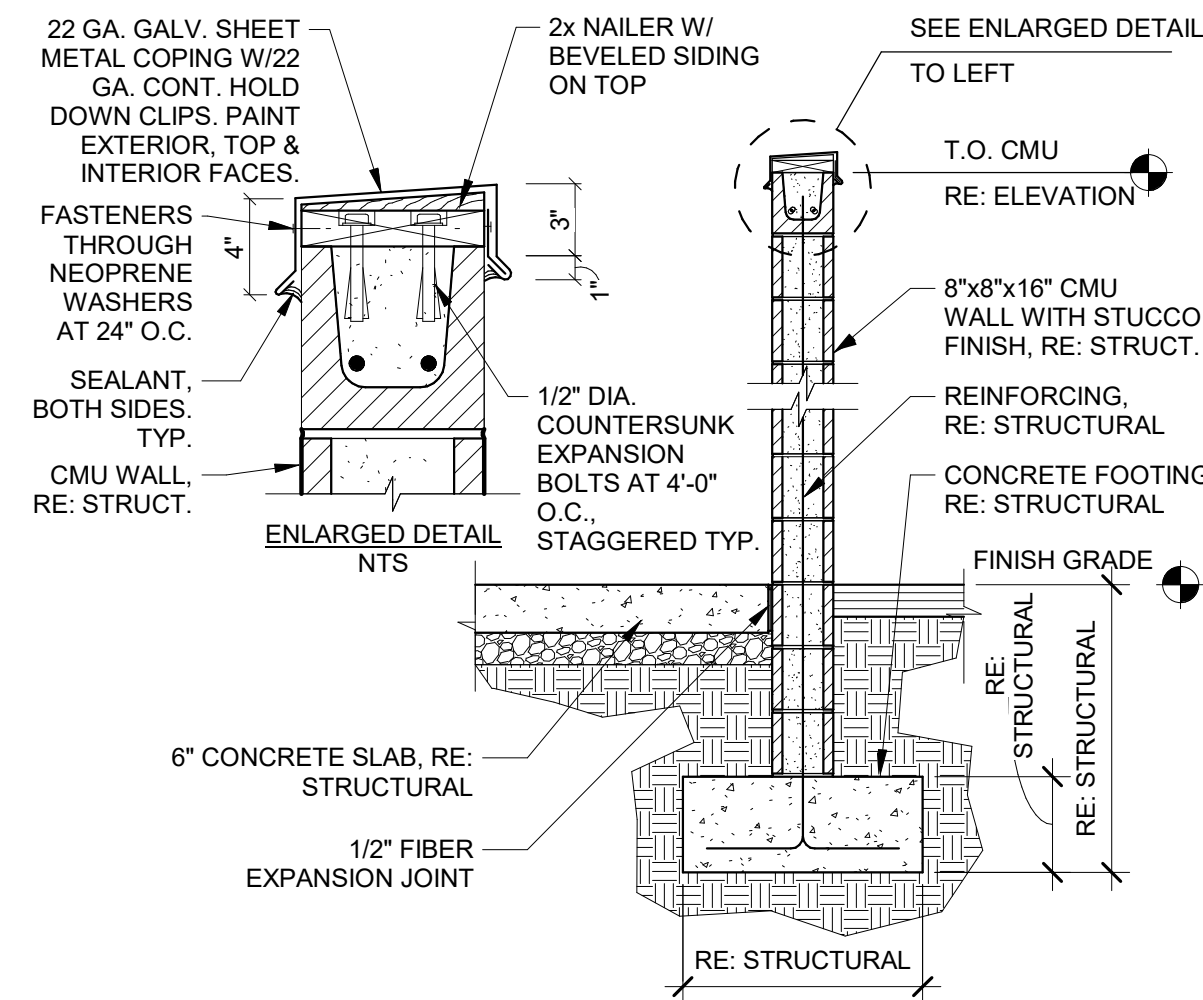
SHEET

A7.3

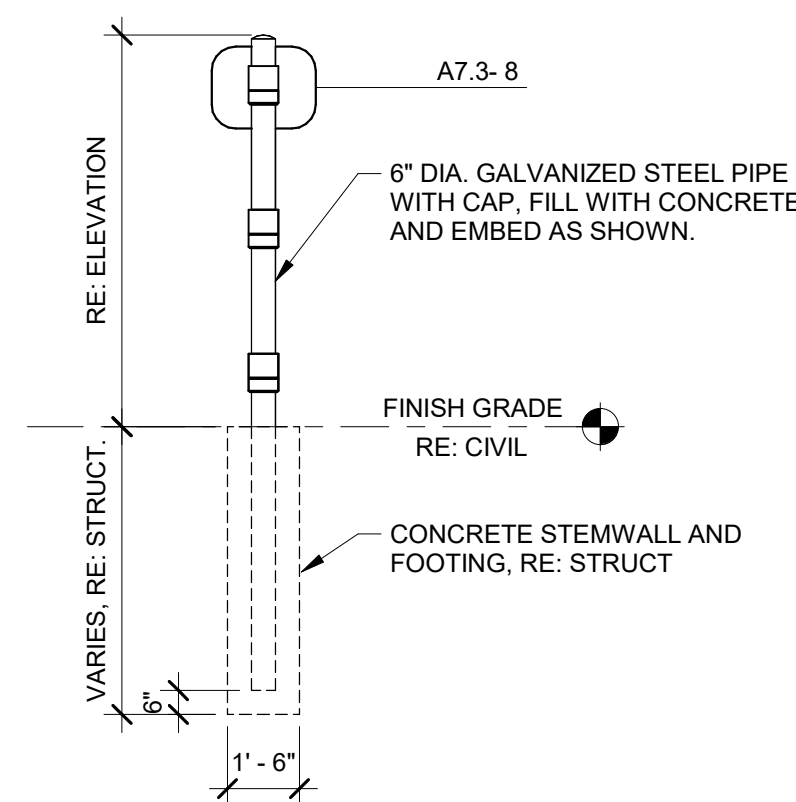
ORIGINAL SHEET SIZE
 24" x 36"



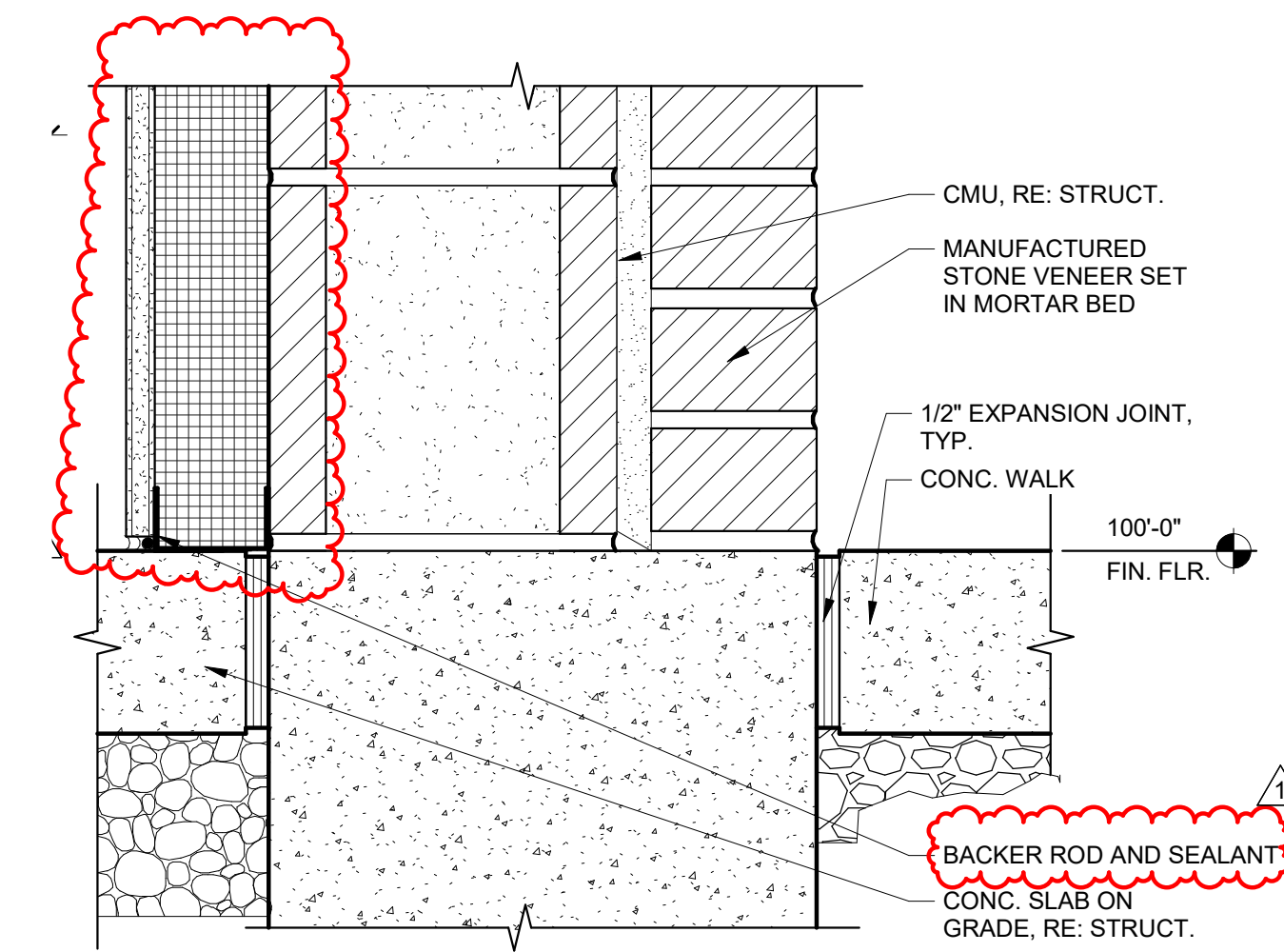
3 PIPE BUMPER
 1/4" = 1'-0"



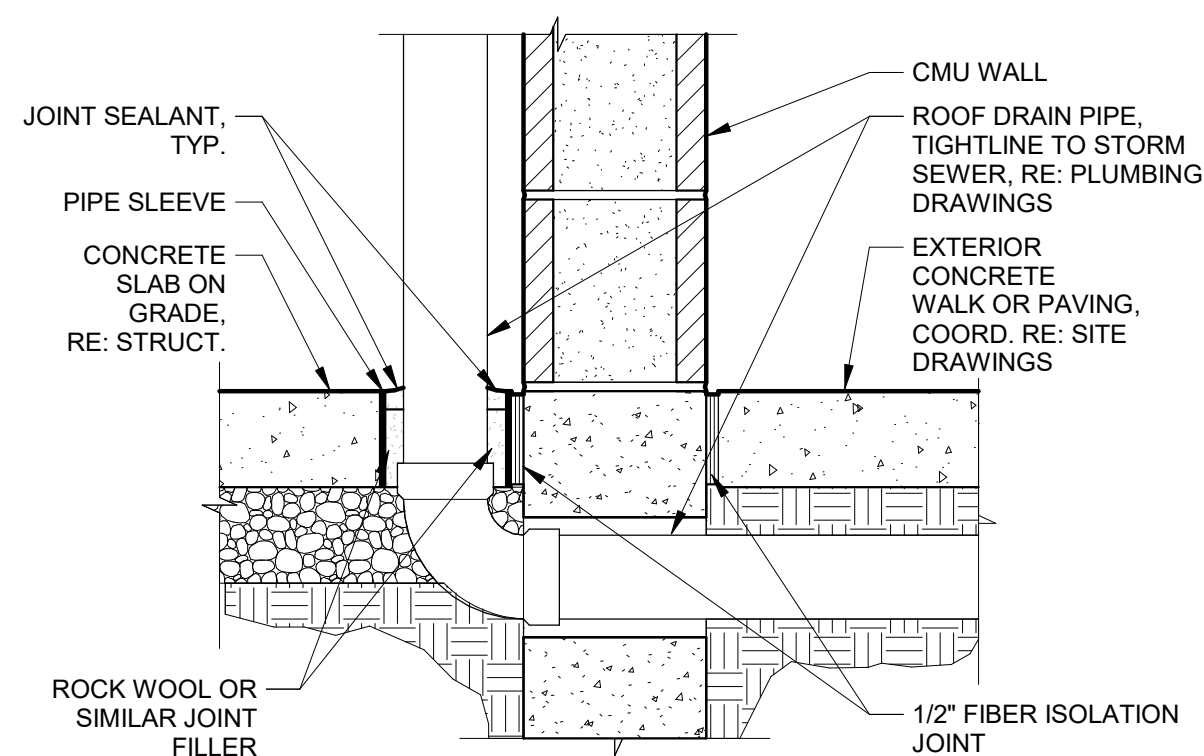
5 TRASH ENCLOSURE SECTION
 1/2" = 1'-0"



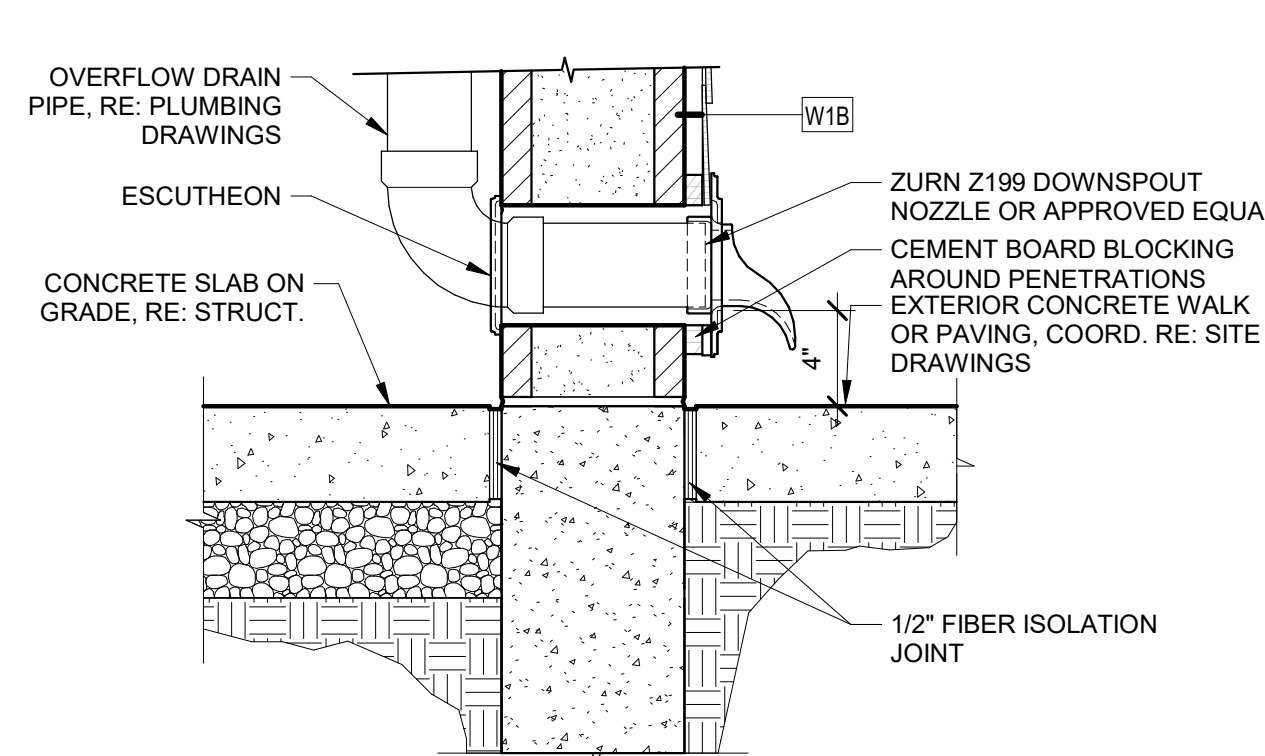
6 GATE POST
 1/4" = 1'-0"



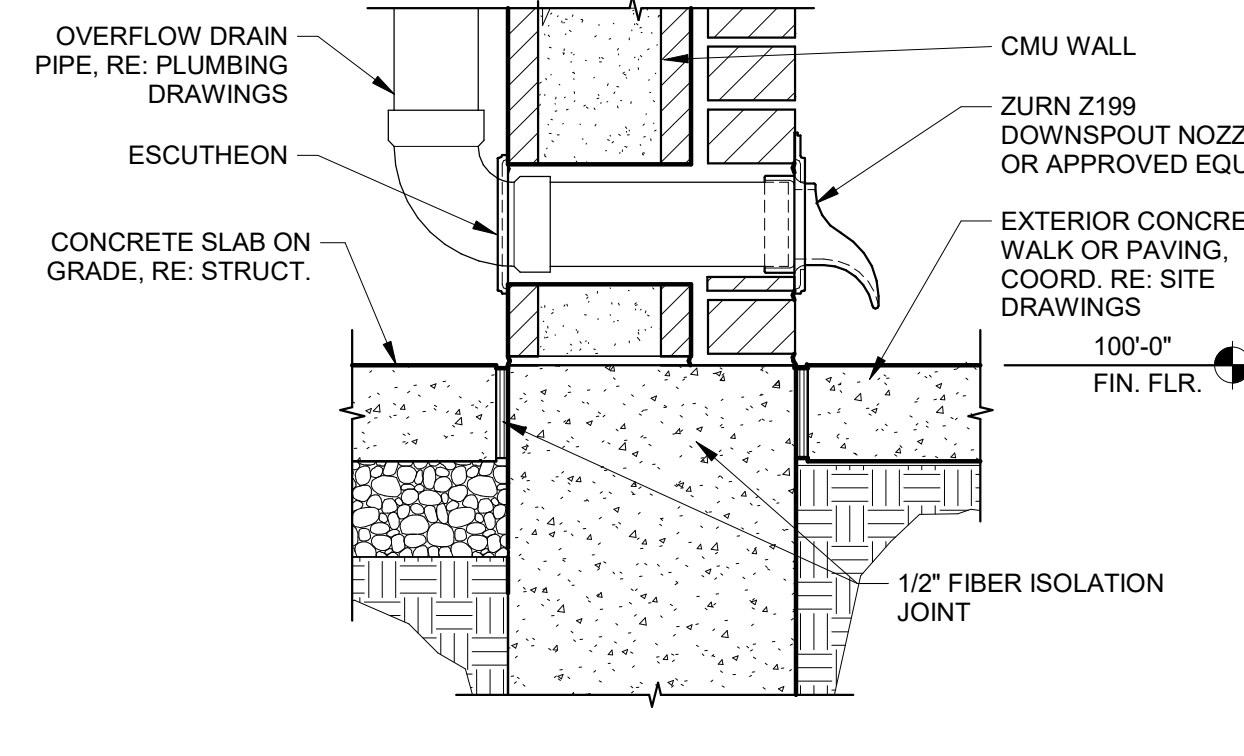
9 BRICK BASE
 3" = 1'-0"



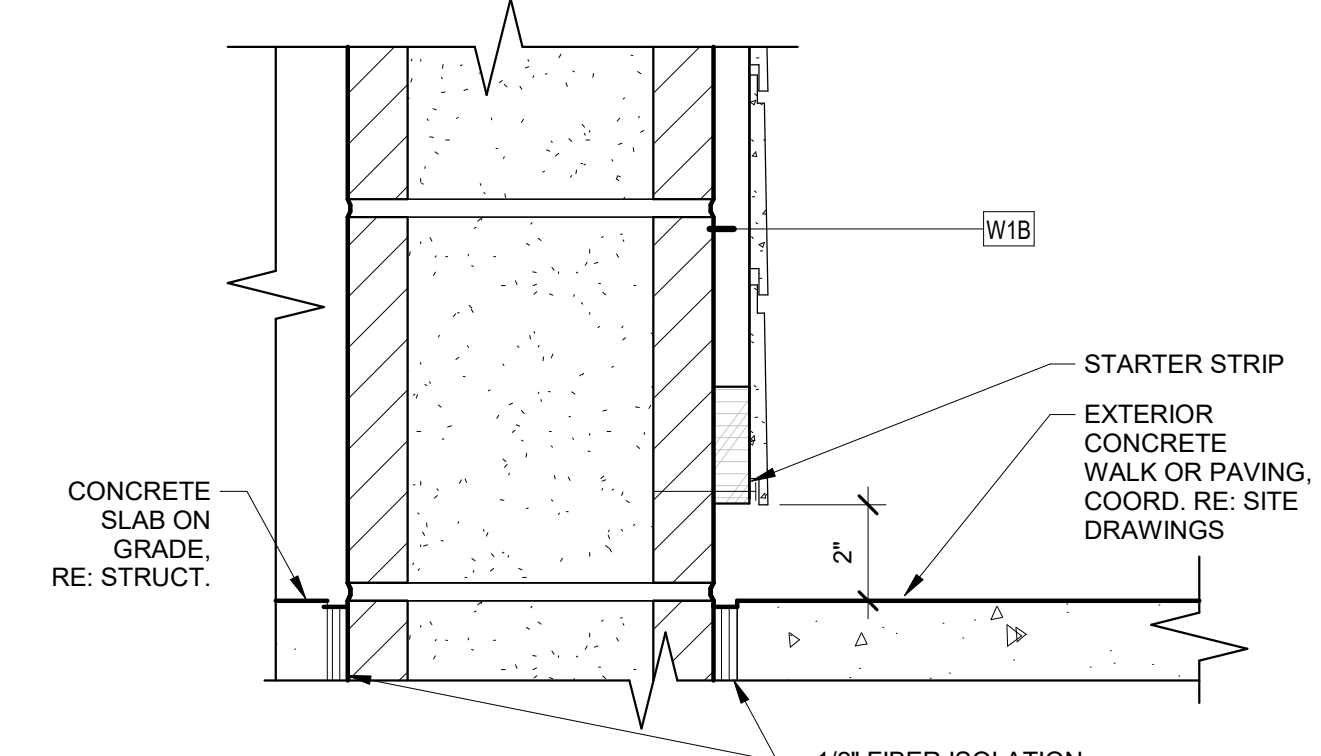
10 ROOF DRAIN
 1 1/2" = 1'-0"



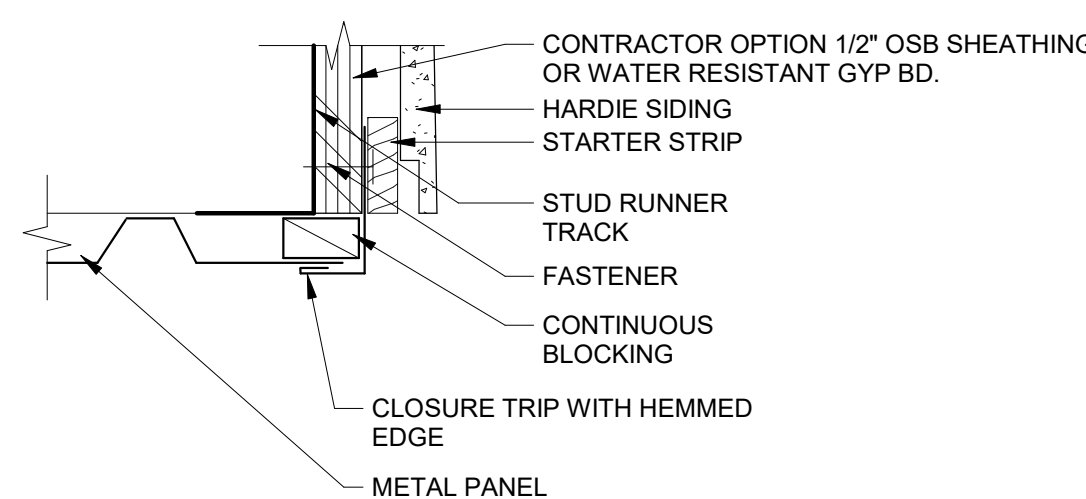
11 OVERFLOW DISCHARGE
 1 1/2" = 1'-0"



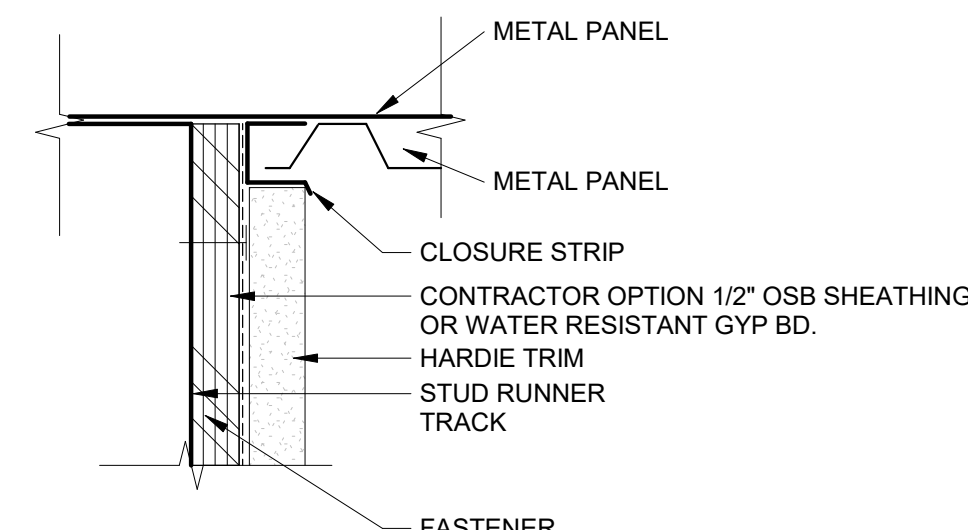
12 OVERFLOW DISCHARGE @ BRICK
 1 1/2" = 1'-0"



13 HARDIE PLANK AT GRADE
 3" = 1'-0"



14 DRIP EDGE AT HARDIE
 6" = 1'-0"



15 INSIDE CORNER
 6" = 1'-0"